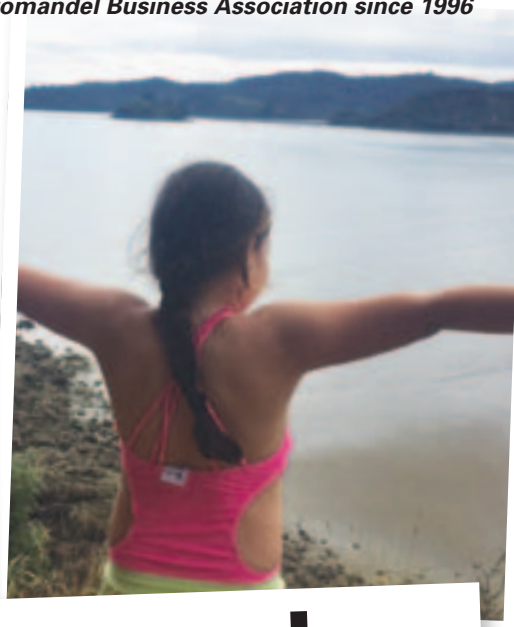


April 2017
Volume 21 Issue 4

Coromandel Town Chronicle

FREE
Community Magazine

Founded and owned by the Coromandel Business Association since 1996



Community makes a wish come true

SEE PAGE 4



Children's Day at the Museum PG 7

Ruru Rescued PG 10

Classy Chicks PG 35





Open 7 Days from 11am

HAPPY HOUR

4-6pm Tap Beer Only

**GOLDRUSH & GOLCONDA
GARDEN BARS & BISTRO**

Lunch 12-3pm Wednesday - Sunday
Dinner 5-9pm Wednesday - Sunday

TOP DECK RESTAURANT & CAFÉ

Dinner 5-9pm Thursday - Saturday

WHAT'S ON IN APRIL:

Saturday 8 April

Karaoke with Audrey from 9.30pm
- FREE ENTRY NO COVER CHARGE

Saturday 29 April

DJ Tuku 9.30pm-1am
- FREE ENTRY NO COVER CHARGE

**Wednesday 5 April
and every Wednesday**

Pub Quiz from 7pm
FREE ENTRY with Bar Tab Prizes

**Friday 14 Good Friday
CLOSED**



146 Wharf Road, Ph 07 866 8272
Like us on Facebook
search "Admirals Arms Hotel"

Driving Creek Cafe and Book Store

New Days and Hours
until Queens Birthday weekend are:
Tuesday - Sunday 9am-5pm
Closed Mondays



180 Driving Creek Rd, Coromandel
07 866 7066
drivingcreekcafe.nz

SALES - SERVICE - REPAIRS OF SMALL ENGINE EQUIPMENT • ROTARY HOES

• WEEDEATERS • HEDGE TRIMMERS • WATER PUMPS • GENERATORS • AUX OUTBOARDS • MINI BIKES

Shane
021 0238 0347

Paddy
021 662 920



TRADE CERTIFIED
SALES - SERVICE - REPAIR
OF SMALL ENGINE
EQUIPMENT



FREE PICK UP AND DELIVERY
TO COROMANDEL TOWN

165 Wharf Road Coromandel Town
SERVICING COROMANDEL PENINSULA

CHAINSaws • MOWERS • CHAIN SHARPENS / CHAIN SUPPLY • NGK PLUGS

• LOG SPLITTERS • RIDE ON MOWERS • CONCRETE CUTTERS • WATER BLASTERS • BLOWER VACS

Coromandel Town Chronicle

Cover picture:

Photos from Chuck's trip to
Coromandel Town

The *Coromandel Town Chronicle* is published by Jude Publishing Ltd on behalf of the Coromandel Business Association. It is delivered free to the Coromandel area.

Jude Publishing Ltd
PO Box 148, Coromandel 3543
www.coromandeltownchronicle.co.nz

If you have any news stories that you'd like included please email corochronicle@gmail.com or post to PO Box as above.

If you are not sure how to put an article together for publication then find tips and advice on the website: www.coromandeltownchronicle.co.nz/html/guidelines.html

For advertising please email Debbie on corochronicle@gmail.com or phone 021 235 6648

The Coromandel Town Chronicle is printed with vegetable oil based inks by Print House Ltd, Hamilton. An accredited FSC and PEFC printer. Enviromark Bronze certified.

Coromandel Business Association's Mission Statement: To support business, partnering with our community board, to strengthen and encourage the development of Coromandel Town and environs.

Want to support the CTC? Live out of town? You need an annual subscription.

\$40 (incl. GST) NZ postage only.
See contact details above.

Deadline for the next issue is 4pm Monday 17 April

Disclaimer: The publisher and its editors of the *Coromandel Town Chronicle* shall not be responsible in any way for opinions expressed in letters and articles contained in the *Coromandel Town Chronicle* or for loss or damage suffered by anyone in reliance upon the information contained therein. Further, no endorsement of any product or service featured or advertised in the *Coromandel Town Chronicle* should be implied or assumed.

Coromandel Business Association Disclaimer: The opinions of the editor do not necessarily reflect the opinion of the Coromandel Business Association. The Chronicle should be representing all parties and showing a cross section of feedback from the community and we believe this to be the case. The editor of any publication is entitled to a personal opinion and provided this is identified as such then this is acceptable to us.

ISSN 1178-721X (Print)
ISSN 1179-4895 (Online)

Editor's comment

I have always tried to include everything that is sent to me in the Chronicle each issue. However this issue I am sad to report that I have decided not to print several letters to the editor and an article. I have also asked two other people to adjust their articles. I have done this in response to complaints about last issue. The Chronicle is not the place for scientific debate, nor is it acceptable to name and criticise others. I will do my upmost to keep tabs on this so we have a Chronicle that we can all enjoy to read and catch up on what is happening in the community.

After a bout of rain and wind I hope that the rest of autumn is settled. There is the Easter Festival in Colville, the annual Coromandel Easter Exhibition plus head over the hill to A Taste of Matarangi. Enjoy!

Debbie

Coromandel Business Association policy:

The purpose of the Coromandel Town Chronicle is to showcase the region and its people. The Coromandel Town Chronicle is open for everyone to contribute however the editor reserves the right to select the articles, advertisements and letters that are published in line with the Coromandel Town Chronicle's publication policy.

Letters

Little penguins and kingfishers

Dear Chronicle readers,

For a couple of years now I have been very concerned about the decline of a couple of our bird species in the Coromandel area and hope that they are not on the decline.

Each time we go out to sea we look for our little blue penguin. For years every summer they have been seen paddling around the ocean usually in pairs calling to one another, then later in the autumn they were seen in groups of 4-5 probably with their young. A few years back they could be seen everywhere but now we are lucky if we see one or two.

Have we lost the little fish they feed on? I know nest boxes were made by the school children up at Colville for pairs to nest in. It would be interesting to know if these boxes were used this season. I read in the Hauraki Herald (3 March 2017) that boats over at Matarangi are also concerned at the rapid decline of sea birds and blame the decline in small fish they feed on. Maybe it is also affecting our little blue penguins.

The other bird I have not seen in our area (Coromandel to Thames) for some years is the bright little kingfishers. You used to be able to drive to Thames and see them along the coast sitting on rocks, wires and pohutukawa branches watching for sea creatures as the tide went out. I now look carefully every time we drive up and down the beautiful coast road, but see them no more. It was always a great delight when I drove up our road at Te Kouma to see a flash of blue green as a kingfisher flew to its nest in the clay bank, but sadly no more.

Maybe DOC can shed some light on my query. There will be a reason. I hope we don't lose them.

Regards,
Ann McNair, Te Kouma

St John

Dear Editor,

I would like to respond to a thank you from St John. I am one of a small group of people who have decided that we should make use of the fruits we see laying on the grounds in and around our beautiful town. Our contribution to St John is via our local butcher, Shane and Tania, who have generously provided an avenue for donations to St John. Thank you both; you are very special to this town! Donations of small jars (drop at the butchers) would be really appreciated so we can carry on! From Lyn Rose – on behalf of the team

Artist

Dear Editor,

As a "struggling artist", I take this opportunity to thank very much the seven members of the local community who made the supreme effort of attending my recent exhibition of 10 days at Hauraki House. I was so grateful to these citizens.

Fortunately, the majority of visitors were from overseas including Italy, France, Poland, Japan, Brazil and Greece – all of whom bought a painting. Thank god for their support.

Regards,
Richard Chrisp

Send letters to the *Coromandel Town Chronicle*, PO Box 148, Coromandel 3543 or email to corochronicle@gmail.com. Contributions should be kept short, and should not exceed 350 words. They must include name, address and telephone number. The editor reserves the right to reject letters or edit them for clarity and space.

Community makes a wish come true

By Alex van Tuyl, Wish Co-ordinator,
Race4Life Trust

Damion (Chuck) Matene, lives in Pukekohe and has just turned 50. He has just had a recent diagnosis of cancer in his chest wall which unfortunately has already spread and he doesn't have much time left.



Damion (Chuck)

Since having to stop work before Christmas his family have struggled hugely financially.

His one wish is to spend some time making memories with his children and his wife Denise. He has five children ranging from 6-16 who live at home and are very close to him.

He contacted Race4Life and requested that he would like to do a scenic rail ride and go fishing with his children one last time.

Since his wish request he took a turn for the worse and spent a week and a half in hospital, then got the go ahead from doctors to complete his wish as he "has nothing to lose". They let him out on Monday to start his wish on Tuesday 28 February.

The Coromandel Town community really did go out of their way to make this wish come true. Chuck's son Kyle had a birthday

on the Tuesday that they left and he ended up with two birthday cakes! Nikki Stephenson's mother-in-law "Nana Pat" made her famous carrot cake and Coromandel Four Square donated one too.

Viv from Coro Time gave Nana Pat a small present to put on Kyle's cake when she heard what the community was doing. It was original handmade magnets of the local places they visited in Coromandel.

Pat who owns Coro Pies was closed that day due to a hospital visit but he arranged for his son to open the shop and greet the family with pies for their first lunch!

Michael from Coromandel Discovery acted as their chauffeur and nothing was too much trouble for him. He liaised with everyone and made the trip a stress-free time for the family.

Both Waterworks and Driving Creek railway were fantastic in their generosity and hosting of the family.

The Top Pub and the Admirals Arms were also fantastic, generously gifting meals to such a large family wholeheartedly and with such enthusiasm.

Tom from Coromandel Fishing Charters was a star. Nothing was too much trouble. He organized the filleting and packing down of the fish for the family to take home through Hank at Salty Towers and he organised Graham Carter from Fishing and Outdoors magazine to come on board and run an article.

Eleanor from Success Café packed the family a lunch that was fit for a king and would feed an army!

Coromandel Four Square gave us a voucher and Leasa from the shop donated more money to enable the bach to be full of lovely treats that the family usually can't afford.



Chuck on Driving Creek Railway



Fishing trip courtesy of Coromandel Fishing Charters

Nikki Stephenson really was amazing. She helped put the whole thing together by giving me ideas and contacts to call. Rod Davies and Nikki were so generous to donate their "Top of The Hill Bach" for two nights as that really enabled the whole wish to fall into place.

Fullers were wonderful in that they generously gifted the whole family return tickets too.

The trust was totally blown away with the pure generosity of spirit which came our way through the Coromandel Town community.

The Race4Life Trust is a registered not for profit charity established in May 2015. The trust was formed to fulfil the wishes of palliative care patients (18+) and is the only trust in New Zealand that specifically provides this service. The aim of the Race4Life Trust is to enable people living with life limiting illness to realise their dreams and create memories that they and their families can cherish. Our mission is to seek to provide people with the means to fulfil their wishes and therefore everything we do will be driving towards the wherewithal to make it happen. Currently the Race4Life Trust is a totally voluntary service that is funded through the generosity of supporters, businesses, donors, grants, volunteers and communities. Go to www.race4life.co.nz for more information



Chuck with his family



**Coromandel
Storage Ltd.**

Coromandel Town
Dry & secure, close to town

Home 07 8667234
Greg 027 2332696
Carla 027 6006611
coromandelstorage@gmail.com



Small Motor Repairs

**Come along and see us in our new shop at
18 Kapanga Rd (old 4Square)**

Rob & Carolyn 866 7865 or 021 618 601

Heart Beat – St John Ambulance Coromandel/ Colville

By Julie Morris,
Station Manager,
Coromandel

St John Annual Appeal Week 3-9 April
St John Coromandel along with the
Emergency Services will be holding a public
open day on **Saturday 8 April** 9am-2pm.

Car boot sale (phone to register), sausage
sizzle, blood pressures, blood glucose and
displays will be included!

During the week if available the
duty crew will be in town offering
blood pressures, blood glucose tests and
information to the community.

Posters have been distributed to the
businesses of Coromandel Town with all
details.

So come one, come all, we need your
support for St John, a vital service in your
community.

Stay safe, keep well.

You too can be part of Coromandel/Colville
team: For more enquiries call the station and
talk to the duty officer or leave a message
(07) 866 8279 to find out more

Open Day 8 April

A Taste Of Matarangi 2017

Event Programme

10am – Festival opens.

10.30am – Welcome and official
opening by local iwi – Ngati Huarere.

10.45am-11.45am – Wilde & Rich – This

acoustic duo will be turning out ambient sounds of foot stomping rock, blues, country and
folk.

11.15am – Cooking demonstration and tastings in the marquee presented by Andy and
Shelley Corles of Castle Rock Cafe.

12-1pm – Cosha – A newly formed band of five locals from Tairua playing epic classic rock
tunes with a funk infusion.

1pm – Charity auctions – three great packages up for auction – see below for more details.

1.30-2.30pm – Noise Control – Drum and guitar duo, Nick and Pete will power up an
energetic show that will have you up dancing.

2.45pm – Raffle draws (raffles on sale 10am-2pm at the merchandise tent).

3pm – Five O'Clock Shadow – Bringing the day to a grand finale with classic well known
tunes that will have you up dancing and singing along.

4.00pm – Alcohol sales close.

4.30pm – Festival closes.

Other Activities

Coro Clowns and Whiti Fools – Bringing colour, laughter and silliness to the festival.

Event fun amusements – Mini jeeps, hotrod slide, Shrek bouncy castle, bumper balls,
obstacle course.

Westpac Rescue Helicopter simulator and merchandise – donations accepted.

Face painting fun by the Kuaotunu Kindergarten.

Charity Auctions 1pm

Auction 1 – Whitianga package: Two nights at the beach front Admiralty Lodge in
Whitianga, \$100 voucher for Salt Restaurant, two deluxe all day passes for The Lost Springs.

Auction 2 – Whitianga package: Two nights at the beach front Admiralty Lodge in
Whitianga, \$100 voucher for Salt Restaurant, two deluxe all day passes for The Lost Springs.

Auction 3 – The Dunes Package: Two nights accommodation and two rounds of golf for
two people at the Dunes Golf Resort, Matarangi.



**A CHARITABLE
EVENT FOR**



8th April

**Delicious cuisine,
fine wine & cold beer,
awesome music,
children's activities
and more...**

Starring:
FIVE O'CLOCK SHADOW
NOISE CONTROL
COSHA
WILDE & RICH



Tickets on sale NOW!

at: **Richardsons Real Estate (Matarangi),**
Whitianga I-Site, Coromandel Adventures
Online at www.atasteofmatarangi.co.nz

Thank you to our sponsors



Christ Church Anglican Parish

By Father Philip Sallis, Parish Priest

The Season of Lent began on Ash Wednesday (1 March) and continues until Holy Week before Easter Day, which this year is **Sunday 16 April**. During Holy Week we prepare for the Day of Resurrection of Our Lord Jesus Christ. On Thursday of that week (Maundy or Holy Thursday) we reenact the time of the Last Supper when Jesus washed the feet of his disciples and told them that in the breaking of bread in his name, he would always be with them. On Good Friday we pause and come close to Jesus in prayer as he hung on the Cross and we recall his terrible death. On Holy Saturday in the evening we hold a vigil and bring the elements of fire and water into our celebration of the first Holy Communion of Easter, then on Easter Morning we rejoice the joy of Jesus risen to be the Christ, the anointed one of God once more among us.

That all might sound rather ritualistic...and it is! But it is ritual with profound meaning that brings explanation to our being and hope for our lives and the world around us. During the Season of Lent we prepare for Holy Week and Easter by taking stock of our lives as they are and seeking to find the best way we can to live them and to be as Christ for others we encounter.

At Christ Church we gather every Sunday at 10am to celebrate and commemorate the gift of God to the world who was Jesus in his humanity and Christ in his divinity. Our gathering is a service to God that we call the Holy Eucharist (meaning sacred meal) or in other words The Mass or Holy Communion. During Lent we take a lower key approach to our liturgy (worship) as we contemplate the time that Jesus struggled with his destiny and yet became increasingly aware and committed to fulfilling it according to the will of God. This can be a deeply meaningful time for those who allow themselves to be drawn into the very human interaction with God that made possible by Jesus in his humanity. All are welcome to join us each Sunday at 10am and all are welcome to receive Holy Communion or if wished, alternatively a blessing at this time.

May God's mercy and grace be with you all.

Christ Church Anglican Parish, 180 Tiki Road, Coromandel Town

Biodynamic Gardening Workshop 2 April 2017

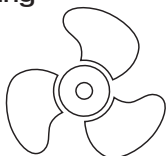
On **2 April** there will be a biodynamic gardening workshop at the home of Ursula and Lut Gaebler in Kuaotunu, starting at 9.30am. We will be building a biodynamic compost heap and discussing the use of biodynamic preparations 500, 501 and the compost preparations. We will also discuss any questions you bring on any other gardening topics. We will finish with a shared lunch.

For further information please ring Gill or Peter Bacchus (07) 866 7077



COROMANDEL MARINE ENGINEERING & OUTBOARD SERVICE CENTRE

- All makes, model & inboards serviced.
- Full diagnostics for OPTIMAX, SUZUKI, JOHNSON, E-TEC, EVENRUDE & YAMAHA available.
- Retailers for Saltaway, outboard oils, ProLan products & marine spark plugs.
- Aluminium, stainless welding & general engineering.



Telephone
Workshop/office:
07 866 8004

Grant: **028 2580 2351**
Jackson: **021 059 7542**

116, The 309 Road, Coromandel - 1km from the main road.

Coromandel Pier and Rail

By Scott Wynands, Pier Project Manager



Hi all, I know it has been a while since our last Pier update. The reason for this is we have been waiting for TCDC's expression of interest procedure for the Harbour Facilities Project to run its course. We have been in ongoing communication with TCDC, Waikato Regional Council and Tourism Coromandel regarding the project and have been notified that the Pier has been shortlisted by TCDC for the Harbour Facilities Project. This will mean presenting the project to council later in the year to look closely at how the Pier would benefit Coromandel and its practicality. We already have a full business case and 50-page presentation outlining this in detail, so most of the work has been done to this end. It is essential that we have the support of TCDC if we are to make the Pier a reality so we need to go through this process.

Being a charitable, community-based project, the Coromandel Pier and Rail is open to large pools of regional and national funding which will mean that we don't need to depend on the council to fund the project. A level of support to help cover the resource consenting process would be the most likely scenario. For the level of return for investment, this is a great opportunity for the council and the Coromandel Peninsula. We formally established the Coromandel Pier and Rail Development Trust in July 2016 which will manage the Pier's development. The next step for the project is to develop a full feasibility study. The Waikato Regional Council's Regional Development Fund has the capacity to cover the costs of this and the Pier project meets all of the criteria for eligibility. Full community consultation will happen during this process to ascertain the impact on the community and the wider environment. We have already seen an incredible level of support early in the projects development, with over 500 people signing Barry's petition in 2014.

Barry was adamant that the project needs to stand on its own legs from now on and I agree. If this incredible achievement is to happen for Coromandel, it needs to be driven by the residents of Coromandel Town and the wider Peninsula. Due to its unique appeal to a wide range of people, support will also come from the surrounding regions, including Auckland, but the real work needs to be done by Coromandel residents who will benefit most from this project should it go ahead. Please visit Coromandelpier.wordpress.com for more info. The full presentation is available under The Concept button on the main page. Please engage with us on Facebook at Coromandel Pier and like us, etc., to spread the word. After a well attended and positive workshop last year we will hold another workshop in April at Hauraki House. Keep an eye out around town for posters about the timing and please feel free to speak to Ruby Powell as she is based in Coro or call Scott on 027 342 0013 or email Coromandelpier@gmail.com. We are looking for others who may be interested in becoming Trustees, preferably Coromandel residents. Please contact us if this sounds like something you would be interested in. Please note that the Pier is not currently planned to be attached to the existing wharf but rather 20 metres or so south of the wharf to minimise impact on the current activities on the wharf. Everything is in a concept-only stage and will be refined by further community consultation during the feasibility study.

All the best and get in touch if you have any ideas to help the project along.

PENINSULA ELECTRICAL SERVICES LTD

Commercial & Domestic Electrical Contractors



RAVINDER & SUE RAJ

Registered Electrical Inspector

P.O. Box 109
Coromandel

Telephone (07) 866 8166

Free Phone: 0800 4 Electrical (0800 435 328)

E-mail: ravinder@e3.net.nz

1750 S/H 25

Coromandel

Fax (07) 866 8162

Mobile (0274) 738 734

Museum News

By Raewyn McKinney

Visitor numbers to the museum have continued at a very promising rate, even in spite of the recent stormy weather. Of course, the museum is one treat that does not demand fine weather, so keep us in mind when we get the next rainy weekend.

On Sunday 5 March, the Coromandel museum celebrated Children's Day, with a fun afternoon of supervised activities from a bygone era. Entry was free on the day to any adult accompanied by a primary school age child.

Although we did not have a huge number attending for this occasion, those who did come along had an enjoyable time learning about old crafts such as cotton reel French knitting and making peg dolls, and cotton reel tractors, all washed down with some refreshing old style lemon drink. We thank Val Macdonald and her team of helpers for coming along for the afternoon and, of course, those parents who brought their children along. One thing most of these old fashioned activities had in common was that they used up leftover items, and made use of old or used articles. Back then this was considered a way to be thrifty and to reduce waste, as well as a chance to show off how creative a person could be. Unfortunately, in the affluent post-war years it seems everyone was more interested in buying new articles, and would rather be considered rich than creative. It strikes me as slightly ironic that we are now once again encouraged to "re-use and recycle" as much as we possibly can.



Visitors to the museum on Children's Day

This month I have an article from "The Auckland Star" of 8 April 1929:

"Unique Gathering Handing Over War Bonds

Mr Fred Jeune received quite an ovation from old friends at Coromandel when he appeared, according to arrangement, to present War Loan certificates to those for whom he had taken them up in 1918. Mr Jeune was anxious to 'do his bit' during the war, and, as he was then too far advanced in life to go on active service, he started out on a campaign to sell war loan certificates. He travelled all over the Coromandel Peninsula at his own expense, and was instrumental in placing bonds to the extent of £50,000. He was living at Coromandel at the time, and started his campaign with the children attending the Coromandel Public School. In cases where children could not raise the 13/- for the war certificate, Mr Jeune advanced the money, held the certificates till they matured, and recently he went to Coromandel for the purpose of handing them to those in whose names they were taken out. The arrangement was that Mr Jeune was to be refunded the 13/- he advanced, and the holder of the certificate got the 7/- interest. There was a large gathering to witness the handing over of the certificates. Friends by the score shook hands with the veteran, who is now nearing 90 years of age. He was warmly congratulated on what he had achieved. Mr Jeune briefly addressed those

present, and then handed over the certificates. He was accorded three lusty cheers at the conclusion before the people separated. Naturally, after a lapse of eleven years, some of those who should have received war certificates were not present, and Mr Jeune has now to solve the problem of how to find where they reside, as he is anxious to close the matter up as soon as possible, in order to carry out his trust."

The museum will be open daily from 1pm to 4pm until Easter, then on weekends only. Closed Good Friday

Monday Walkers

By Irene Dunn

As this report goes to print we walkers have had three awesome bush walks with views to die for, fortunately all before the rains came which makes the bush tracks very muddy. We are fortunate to be living in such a great place that we are able to choose a walk suitable for the weather!

Welcome to new walkers Raewyn and Susan – enjoy your walks with us.

More interesting walks in the pipeline – do join us. We meet each Monday at Woollams Ave car park at 8.30am – call the number below for more info.

The award for being such a "tidy Kiwi" must go to Natalie, who without fail picks up any rubbish on our walks – it's amazing what she finds.

Happy walking everyone

Contact Irene 07 2119 758 or 021 157 8408

WANT NATIVE NURSERY & EDIBLES WAITAIA RD, KUAOTUNU

A wide range of beautiful natives,
palms and fruit trees.

Potting mix, compost, mulch, chook manure.

Open Thursday- Sunday 9-5 or by phone appointment

Please phone Claire & Colin Hill 07 869 5910

Career Navigator

A READY FOR WORK PROGRAMME

Programme includes the following workshops:

Self awareness, leadership at work, career choices, work ethics and attitude, culture and values in the workplace, communication and positive relationships, CV writing and other work related skills.

This course is aimed at year 11 to year 13 school students as well as community members.

Starts: Beginning of May 2017.

Time: 3.30-5pm one afternoon a week for 10 weeks.

Cost: FREE.

Location: Coromandel Independent Living Trust rooms at Tiki House, 45 Tiki Road, Coromandel. Afternoon tea will be provided.

To register your interest please contact:

Marlene Johnson on 027 223 2629 or leave your details at the resource centre on 07 866 8358.



/Richardsons

Real Estate Ltd MREINZ
Licensed REAA2008

Meet the team... Kim,
Robyn, Melissa & Laurie-Ann



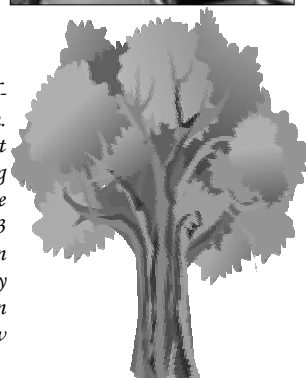
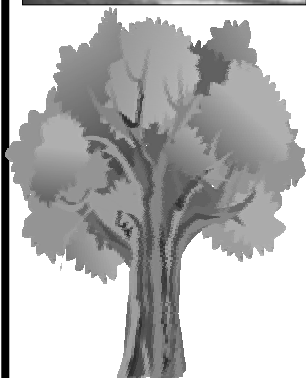
New
Listing

"Mahakirau Forest Estate"



OPULENCE MEETS NATURE

When architecture and seclusion come together, the result is something quite amazing. The award-winning as-new home tucked away in the Mahakirau Forest Estate epitomizes the sanctuary within. Coloursteel and Cedar shiplap have been married together beautifully to create something modern but unobtrusive amid its treed surroundings. The extremely secluded 14.36ha property offers stunning native bush, a number of waterfalls and a huge variety of birds and endangered plant species. The eastern aspect has unobstructed views down the valley towards Mercury Bay. The interior offers 3 double bedrooms (master with en-suite of designer quality), guest bathroom and separate laundry; an open-plan lounge/dining (log burner) with sliding stacker doors either side that open up to the valley below; and a very modern kitchen with soft-touch cabinetry and antique lighting. This home won Highly Commended in the Resene Architectural Design Awards 2016: Residential Compact New Home up to 150m2 ~ **\$850,000**



New
Listing



New
Listing



New
Listing



- Privacy in Mahakirau Estate
- 10.53ha in stunning bush
- Quaint 2 brm cottage, decking
- A perfect weekender retreat
- (Under Offer) **\$319,000**

- Views at Tuatewa/native bush
- 3 brm / 2 bathroom dwelling
- Build with potential sea views
- Extensive decking on 3 sides
- Garaging & storage. **\$560,000**

- Panoramic harbour views!!!
- Immac multi-level 2 brm home
- Spacious open-plan living
- Great decking, walk to beach
- (Under Offer) **\$675,000**

/Richardsons

Real Estate Ltd MREINZ
Licensed REAA2008

Proudly making real estate
a reality for Clients and
Customers for over 56 years

www.richardsons.co.nz

151 Kapanga Road, Coromandel
Ph: 07 866 8900 - Fax: 07 866 8513
Kim 021 533174, Robyn 021 448975
Melissa 027 2498287, Laurie-Ann 027 9276368

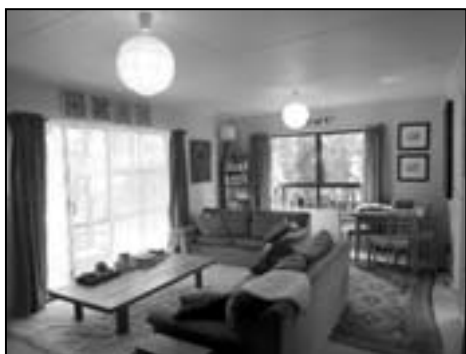
New
Listing



New
Listing



New
Listing



- A great retreat in the township
- 761m2 section framed by trees
- Internal access to a studio
- Large carport & covered deck
- Currently tenanted. **\$396,000**

- A brilliant rural atmosphere
- Superbly renovated bungalow
- 3 bedrooms, lounge (fireplace)
- Open-plan kitchen & dining
- Garage, ½ acre. **\$550,000**

- Spectacular Wyuna Bay
- Clifftop 890m2 bush section
- Small existing 'Kiwi cabin'
- Build for views, sun & privacy
- Walk down to beach. **\$490,000**



- Immaculate condition
- 4brms, 2 bath, 2 living
- Garage. **\$579,000**

- Walk to Long Bay
- 2brms, good parking
- Decking. **\$390,000**

- Section at Colville
- 2,741m2, sea views
- Fenced. **\$225,000**

- Stunning Oamaru Bay
- 3brms, 2 bathrooms
- Garaging. **\$795,000**

A stellar 12 month period with 97 SALES achieved by the team of Kim, Robyn and Melissa ☺. MORE listings required please for a number of qualified buyers. For a confidential discussion on any property matter, please call in and talk to us.



SOLD



SOLD



SOLD



SOLD



SOLD



SOLD



Coromandel Business Association

By Christine Petrie

It is with regret that we announce that the 2017 Illume: Winter Festival of Light will be postponed until July 2018. Organisers made this decision in light of the fact that there are insurmountable challenges with staging the 2017 event, the key one being the lack of an event manager.

While Illume is a huge help to businesses in the quiet winter months, it is primarily a community event. It has been fantastic to see all generations participating, from preschoolers to the elderly. Senior school students have also been able to use Illume to hone their management skills as they prepare for life in the workforce.

We are grateful to the sponsors who will continue their support of the event in 2018. A community meeting to discuss the future of Illume will be held in May. Details will follow in due course. If you, or anyone you know, would like to assist with Illume in 2018, then please contact us on corobusiness@gmail.com. We are especially keen to hear from anyone interested in taking on the role of event manager. The CBA will continue engaging with artists, businesses and the wider community to make the 2018 event a success.

Coromandel Bird Rescue in action

On 21 February some workers at Moana oyster factory found an injured ruru (morepork).

They were able to calm and contain it, and duly it was taken to the Bird Rescue Centre in Kuaotunu by Carol Sutherland and Neville Cameron.

The bird had a suspected broken wing, which did not prevent it clawing Neville.



Annemieke Kregting at the Bird Rescue Centre took the bird to a vet who was able to fix what was a dislocation.

On 6 March the Bird was returned to the Oyster Factory where it was released. Present were Paul Johnson, Noel Williams and his wife Krystal and their two children.

Carol released the ruru which flew a short distance to a suitable branch and stayed there until sunset. It was heard calling at 9pm at Carol's house nearby.

It was agreed by all to be a satisfactory outcome.

Congratulations are due to the Oyster Factory staff, for a very well organised rescue, and for being caring.



Paul and Noel at ruru release

Coromandel Grey Power Association

By John Rabarts. President

Prime minister intends to change government superannuation.

On 6 March the Prime Minister announced that the age of entitlement for Government Superannuation will change from age 65 to 67 by 2037. The residential requirement will also change from 10 years to 20 years. This is contrary to Grey Power's longstanding policy. The Prime Minister did not say how that will apply to people not physically able to continue working until age 67. The changes will not affect anyone presently over the age of 45.

National President of the Grey Power Federation Tom O'Connor said, on 6 March, that the increased age of entitlement for national superannuation did not come as a surprise. "We have known for some time that the Prime Minister was heading in that direction. We have some concerns about the rationale for the move as we are confident that national superannuation is affordable in the long-term, particularly if other changes had been made."

Tom O'Connor said the Federation's concerns were not for people currently receiving national superannuation but for those people who will be entering their retirement years in the next decade or more. "We are particularly concerned for those people in physically demanding jobs. It's all very well to talk about retraining but the reality is that no matter what qualifications people might gain as adults no one really wants to employ a newly qualified middle aged clerk when there will be school leavers available," he said. The increase in the residential term for immigrants to qualify for national superannuation, from ten to twenty years, was a different matter and O'Connor said there had been a general agreement among Grey Power members to increase the term to twenty-five years. "It seems a bit ironic that the government has not paid into the superannuation fund since 2008 but gave the pension to immigrants after only ten years in New Zealand and then claim the scheme to be unaffordable."

Tom O'Connor said he has a scheduled meeting with the Prime Minister in two weeks when some of the details of the new policy will be discussed. The matter will also be on the agenda for the Grey Power Federation's AGM in May and the membership, of around 65,000, will decide to accept or oppose the changes.

Dolly Welch and John Rabarts will be attending the Grey Power AGM in Palmerston North in May, where this matter will be discussed and voted on. For Grey Power Membership, and Grey Power Electricity enquiries, contact Dolly Welch. Ph. (07) 866 8852 or email: tehwelch@gmail.com or PO Box 91, Coromandel, 3543



JAMES & TURNER 2014 LTD

FISHING • MARINE • TOOLS • CAMPING
PAINT • HARDWARE • GIFTWARE • GARDENING



GRANT WEBBER

jandt@vodafone.co.nz

Ph: 07 866 8805 Fax: 07 866 8969

PO Box 16, Coromandel 3543

131 Kapanga Rd Coromandel Town

Like us on Facebook - search "James & Turner"



SCOTT REVELL

BUILDING CONTRACTOR



- New Homes
- Renovations
- Additions \ Repairs
- Bathrooms
- Decks \ Fences \ Landscaping

Prompt Professional Service

srevell2010@hotmail.co.nz

027 861 6592

COROMANDEL

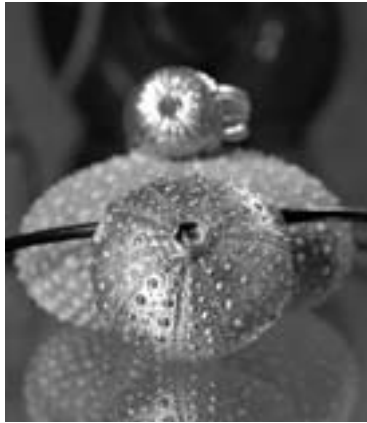
Jewellery artist new in town

I am new to town and have been asked to introduce myself.... My name is Julie Pijfers (Dutch heritage pronounced "Pay-fers") and I'm a jewellery artist.

I've been designing and creating jewellery for the last 16 years. After completing my apprenticeship in Cambridge I moved to Mt. Maunganui where I had a small studio. After years of mostly supplying NZ galleries I decided to deal direct and my work became more commission based. Having said that, having creative freedom is the ultimate for me.

Late last year my husband and I decided that the stunning Coromandel was the place to be. For him it was coming home as he grew up in Whangapoua/Te Rerenga. He is now teaching at Coromandel Area School where our two children attend.

As some of you already know I have set up a new studio at 30 Driving Creek Road which is open to the public. My work is an eclectic mix of styles using gold, silver, precious and semi-precious gems. So far the response has been amazing and we have felt truly welcomed. Such an inspiring place to be and I look forward to sharing my new creations with you!



Email julie@jewelleryart.co.nz
www.jewelleryart.co.nz
www.facebook.com/juliepifjersjewelleryartNZ
 tel 021 157 0040
 JewelleryART studio 30 Driving Creek Road open Thursday to Monday (summer hours) or when the signs are out

SeniorNet Coromandel

By Loes Beaver



SeniorNet is here to assist computer minded people with the setting up and use of electronics such as iPads, smartphones, laptops etc. With the trend today of automatic banking, emails, Facebook, etc., sometimes we do need little refreshers and assistance. We also need to be aware of scams and how to deal with them.

We meet every Tuesday 2.15pm in the Area School music room.

All inquiries welcome and if you would like to talk to us come along any Tuesday.

Our next committee meeting will be on **Tuesday 4 April**.

Contact is Loes (07) 866 8053



Mō tātou o Hauraki

Affordable medical & wellness services for everyone in our community

Clinic Fees

GP

Under 18s - **FREE**
 18-65 years - \$17.50
 65 + years - \$10.00

NURSE

Under 18s - **FREE**
 18 + years - \$10.00

FREE

Under-25s sexual health checks

NURSE PRACTITIONER

Our Nurse Practitioner Ashleigh Battaerd is on Maternity Leave for the next 4 months

Kaiwhakaora - Māori Healer

Jim Kingi

every 2nd Thursday

Foot Clinic

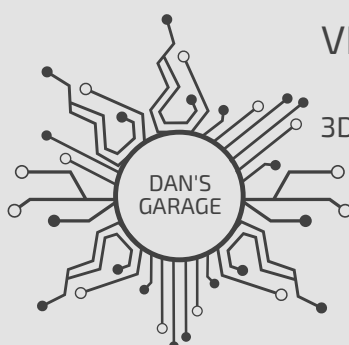
Ruth Wells

every 2nd Tuesday

CLINIC OPEN:
Monday to Friday
8.30am-5pm



225 Kapanga Road, Coromandel 3506
 Ph (inc a/h): 07 866 8084
 Email: coromandel@korowai.co.nz
www.korowai.co.nz



VIRTUAL REALITY

HTC Vive \$20/hr

3D Printing Prusa Mk2 i3

Drone Photography

(020) 411 66877

Danielbarneysmith@gmail.com

Kapanga Road Coromandel

Animal Rescue Thames

By Alice and John Parris

Firstly thank mews to everyone who has donated food, tinned, sachets and small treat cans. Also for the dishwasher and rubbish bags. This helps us to feed and care for the rescue kitties. Also thank mews for the bedding and garage sale items.

We have had a month of running out of things – we not only ran out of tinned Chef and Whiskas food, but also newspaper and sawdust. The cats and kittens protested loudly and buried Budget and Pams as that was beneath them to have to eat that stuff. But food is food and they soon learnt that that was a meal that had to be accepted and eaten or eat biscuits or go hungry. They sufficed with this Budget stuff for three days before we were able to purchase a few cans of their more preferred choice of food. Dine in small cans is not cheap but they enjoy it. Jimbos is a favoured treat.

Toy time – the kittens have enjoyed fossicking and hijacking nuggets of yarn dragging them all over the house, shredding paper work, scattering paper work and also our Tutu who outside found a lovely noisy buzzy toy called cicada – to watch this proud cat with her hunt in mouth, eyes wide, cicada buzzing loudly in her mouth, her whole head was shaking as well which was so funny to watch. Once she realised we were laughing at her she dropped the cicada and stomped off, to look back at us and frown.

Homed – yes we homed one – Harry our very, very special grey boy, whom we



adored. He found a forever home. We shed tears on him leaving home, asking the new owner to contact us to let us know on his progress and with updates. We heard nothing and rang them to get an answerphone and no answer. We did learn from the people's friend cat was okay, under bed, under house. When we heard under house we were most dismayed and have wondered how long he has been outside under house. They were given all instructions and care sheet and told inside for 7-10 days. If this hasn't been followed or he got out, he is in an unfamiliar area, with people and place he does not know. We can but hope and pray he is safe and well cared for and that they ring us.

Newbies – we have been advised that Squirt's mother has yet again had another litter. This feral cat is two months earlier than we thought she would be. Once they find the kittens they will come in to care but it takes a week to relocate where this very, very shrewd mum cat hides her litter. She has been elusive on all counts of getting caught for desexing and is one of those cats who is smarter than the humans at this point in time.

Fundraising – Garage Sale – **Saturday 15 April**, Grahamstown Hall, Pollen Street, Thames.
This is our

first fundraiser for the 2017 year. Any clean, good condition saleable books, toys, puzzles, crafts, patterns are welcomed.

Wanted – homes for all of our older felines and our 18-week-old kittens. All have been desexed, wormed and deflead and are all ready to go. Bedding also still needed, newspapers and garage sale items. Financial blessings will help us feed and care for them all.

Meow furr now.

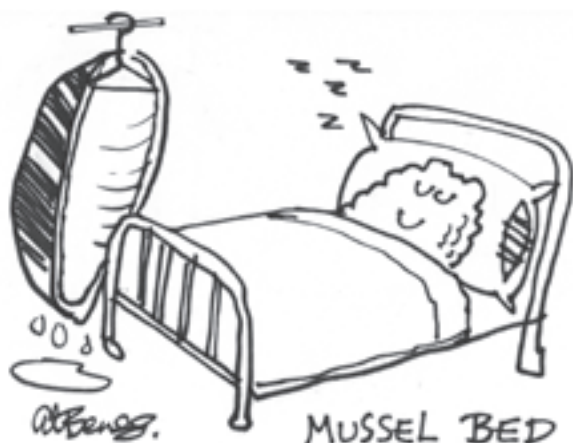
All enquiries purrrlease contact Animal Rescue Thames, 532 Thames Coast Road, RD5, Thames 3575 (07) 868 2907

Poetry SPOT

Supplementary Light

By John Irvine

Dawn, black as the inside of a pony.
Cold winter rain buckets down with some hail,
provides a cacophonic symphony
as I boot up my PC to check mail.
The hounds flounder about in the shadows,
nonplussed over which bed they will favour
on this foul-weather We'n'sday, although
either duvet-covered bed's a life-saver.
Settling in for the morning's siesta
they yawn, they fart and drift back into dream.
Dim greyness cloaks my early fiesta,
scrambled eggs with onion, chilli and cream.
The wonky old standard lamp by my desk
serves light for my culinary burlesque.



Coro Writers Group

By Megan Mackie

Seven members met at Te Kouma this month and began with our usual exercise of spontaneous writing.

The set topic was "The Grandfather" including the traits of imaginative, mysterious and funloving.

Most writing portrayed a positive outlook with only one piece with a slightly "dark" ending.

Members then discussed poetry they had read and books by Phillippa Gregory, Deborah Challinor, Ali Smith and Ashley Young.

After lunch homework was shared. An exercise in describing in detail how an action unfolds with the reference of "The Real World Interrupts".

This broad topic took various forms and some members related to, and expanded on, previous writings.

A shame that Jane, who set this exercise, could not attend because of the torrential rain!



DYNAMIC TREE CARE

Professional tree management services
www.dynamictreecare.co.nz

027 451 2224
07 866 8177

Climbing - Felling - Removals - Hedges - Chipping - Mulch - Pruning - Qualified & Insured



Our Coromandel

News from Thames-Coromandel District Council



APRIL, 2017

Coromandel Harbour Project Update

Sugarloaf Expansion

Since August last year regular monthly meetings have been held with Coromandel Marine Farmers Association (CoroMFA) to discuss their consenting requirements and progress regarding the proposed development of a piled wharf at the Sugarloaf Wharf (TeKouma). This project continues to be driven by CoroMFA with our Council acting in a facilitation role where appropriate. We anticipate a receipt of a consent application from CoroMFA sometime this year – all going to plan. To add to the wider development our Council has also continued to work on implementing the commitments made in the Memorandum of Understanding (MOU) signed with the CoroMFA. We have implemented several health and safety improvements at Sugarloaf including new signage and re-marking of the area to help keep recreational users and industry separated as much as practical. CoroMFA have also been working

with their members to update their code of conduct and improve their health and safety procedures from an operational perspective.

Future demand for Coromandel Harbour boat ramps and wharves

A Marine and Harbour Strategy is under development and this strategy will set out a long-term plan for the boat ramps and wharves and jetties on the west coast. The strategy will help inform our annual and long-term plan processes specifically in relation to our marine and harbour assets and facilities and will be further informed by the outcomes of the EOI process.

Jacks Point/Furey's Creek

Consideration of the project will now proceed to the Annual Plan Process and/or long-term planning processes with determinations due in June 2017. The scope will propose the upgrade of the Jacks Point facility will be brought into the district harbour project scope within the 2017-18 or 18/19 financial year.

Park and Ride Facility – Hannaford's Wharf

The resource consent application by the Mussel Kitchen for a park and ride facility for Hannaford's Wharf has been approved. The operator is currently working to ensure all needs for the facility are met. The initiative once delivered should help to further alleviate congestion on Te Kouma Road and parking issues at Hannaford's Wharf.

Coromandel Harbour Strategy

The Expression of interest (EOI) for potential partners on the Inner Harbour concept closed late last year. We are now evaluating the 12 proposals and are in discussions with most of the short-listed parties. An update to Council and stakeholders is due April/May and after we have completed our discussions with shortlisted parties.

www.tcdc.govt.nz/coroharbourproject



www.coromandel.govt.nz

customer.services@tcdc.govt.nz

Private Bag, 515 Mackay St, Thames

Phone: 07 868 0200



Coromandel-Colville Community Board UPDATE

- **The Board would like to congratulate** everyone involved in the opening of the Coromandel Re-use Centre (The Goldmine) held on 24 March 2017
- **The Board is supporting** the development of a BMX facility at 525 Hauraki Road. We're just awaiting resource consent decision.
- **A reminder the fire ban** has now been lifted for the Coromandel. To apply for a fire permit go to forms.tcdc.govt.nz/fire-permit
- **If you are a local art group** or have a creative project you can now apply for the Creative Communities Scheme www.tcdc.govt.nz/ccs

World Rally Champ icon heading to Goldrush Rally of Coromandel

World Rally Champ and New Zealand racing icon Hayden Paddon is heading to the Coromandel this winter to battle it out in Round 4, the Goldrush Rally of Coromandel.

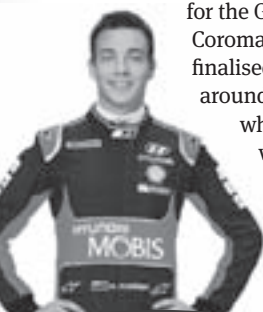
This will be the third year the Coromandel plays host to the New Zealand Rally Championship, with the crews and supporters based out of the seaside town of Whitianga from Friday 25 August – Sunday 27 August 2017.

Saturday racing starts with competition taking place over 135 kilometres of special stage on forestry and public roads around the Mercury Bay and Coromandel-Colville wards and will finish up with a ceremonial finish.

The route and any road closures for the Goldrush Rally of Coromandel is just being finalised, along with details around festivities planned, which we will be publishing well in advance of the race date.

www.rallynz.org.nz

Hayden Paddon.



Get our free eNewsletters!

www.tcdc.govt.nz/subscribe



www.facebook.com/ThamesCoromandelDistrictCouncil

Coromandel ANZAC Day

Coromandel: 10.00am Civic Parade – from Coromandel Citizens Hall, Kapanga Road, Coromandel, followed by service at the Memorial Reserve, 355 Kapanga Road, Coromandel with morning tea at Coromandel Citizens Hall.

Easter weekend information

Easter Trading – Retailers on the Coromandel now have the choice whether they trade on Easter Sunday. Our new Easter Trading Policy allows shops to trade on Easter Sunday throughout the District. This year Easter Sunday falls on 16 April 2017.

This policy won't force any retailers to open, but provides for those who do want to trade on Easter Sunday to do so and is at the discretion of the individual business owners. www.tcdc.govt.nz/eastertrading

Easter Kerbside

Rubbish and recycling collections will be a day later the weeks after Easter Monday and Anzac Day. Check our website for the full collection schedule for your area.

www.tcdc.govt.nz/kerbside



The Coromandel Town Refuse Transfer Station at Hauraki Rd is open as usual over the Easter long weekend, from 11am to 5:30pm (but closed on Good Friday, 14 April) and is open on Easter Monday, 17 April, from 11am to 5:30pm. It is open from 1pm to 4:30pm on Anzac Day, Tuesday 25 April. For hours and locations of all our RTSS, see

www.tcdc.govt.nz/rts

April Goings On at Mahamudra Centre

By Sarah Brooks, Spiritual Programme Coordinator

First we'd like to thank the incredible support from our community for our Family Fun Day in March on National Children's Day. It was a total success, with so many happy people and animals. We could not have done it without the support of the many people who helped organize, bake, volunteer, set up, face paint, play music, provide activities, clean up, and more. This was a very special event, and we look forward to doing it again next year.

We'll be continuing our weekly Thursday guided meditations at Havalona Pyramid on Driving Creek Road. Drop-ins are always welcome, with no experience necessary, and whoever has time meets together afterwards at a local café for some time to get to know each other. Donation basis. We also offer guided meditation every morning at 8.30-9.00am at Mahamudra Centre for guests, visitors and the community whenever there isn't a course on.

This month we are so pleased to welcome back Venerable Antonio Satta to lead a two-week Insight Meditation Retreat. 10 days of the retreat is silent sitting and walking meditation, to truly develop a familiarity with the mind and techniques for calm abiding and mindfulness. There are still a few spaces left if anyone would like to join in – a special registration form is on our website.

Over Easter weekend we'll be having a special training for staff and volunteers within our international organization, the Foundation for the Preservation of the Mahayana Tradition (FPMT).

We look forward to the season quieting down a bit so we can do some bigger projects, repairs, and planning. We've got plans for a new retreat cabin, a new big prayer wheel, and there are always things needing repair around the property. We are so blessed to have so many local helpers who offer time and expertise to help with these issues and plans.

Visitors and members of the community are welcome to come by and have a cup of tea, browse in our shop, and take a time out from busy life with meditation or a walk on our lovely grounds. We hope to see you soon.

www.mahamudra.org.nz (07) 866 6851



Himalaya shop : Colville
Hi Everyone. The Himalaya shop will not be open daily during April month. We will however be open over the Easter period and for a few days more after Easter before heading off to India for next seasons goodies. We will be open again for Labour weekend. The shop number is 8667 224. Contact us : Anette's Mob. 021 139 7838 A/H 8666 865 robnnet@yahoo.com

Taizé singing

By Sue Gilmer

Over the last couple of months we have had five new people join us in our group. It's great to have them with us. They are working hard and all seem to be enjoying the singing and are usually the first ones to get to the hall on Monday nights. Over the last six weeks the new members have learnt four Taizé songs and three gospel/African. Pretty good going! The gospel are quite easy to pick up although we're not quite there yet with the Taizé ones. This isn't surprising – one of them is in German, two are in Latin and another in French. But we get a bit better at them each time we sing them. We make sure we repeat the songs they have already learnt frequently, and each week it gets easier. Tonight we will be learning a Taizé song sung in English and I know the group will pick it up quickly – it's a beautiful song with rich discords and harmonies – one of the many favourites.

I'd like to say a big thank you to the wonderful core of singers who have now been together three years and who did all of this learning when we first started the group. Each week they willingly help the new members in their learning, with patience and support. A special thank you to you all. As an established core, we do get to sing by ourselves some of the oldies. We have many favourites and although we try to finish by 9pm, what with the chocolate that sometimes gets brought along to share, and the catching up with everyone, lights out is sometimes quite a bit later.

If you are interested in coming to see what we do or in joining the group, now would be a good time to come along. We meet every Monday at 7.30pm in the Anglican Hall. It is a good idea to phone first as occasionally we meet elsewhere.

For more information phone Sue (07) 866 8833

**Poetry SPOT****The Passing of Summer**

By Vivianne Flintoff

December came, but summer did not
It was blasted away by the sou'westerly knots
Drying the land, grasses withered with fright
Waves whipped up, boats were clamped tight.

February arrived and with it the sun
But two weeks later summer was done
The wind abated and the sea was bejewelled
Unfettered sun pierced the deep, liquid pool.

I sigh my lament
And moan my protest
For the passing of summer
The season loved best.

Coromandel Garage Ltd

What we offer:

- Service and repairs on all makes and models
- WOF's
- Motorcycle WOF's
- Pensioner WOF's \$40
- Call out's & tow in's
- LPG bottle swap & filling
- Car & trailer hire
- All tyres
- Fuel

BP Card Accepted

Best Value for your money
with over 40 years of combined experience from our two fully qualified mechanics.

Coromandel Garage Ltd, 226 Wharf Rd, Coromandel. 07 866 8736

Proprietors: Darius and Hilary Visser



Library News

By Raewyn McKinney

A recent American visitor to the library drew my attention to an opinion piece published in the New York Times on 19 February 2017. *An Elegy for the Library* was written by Mahesh Rao, and in it he pays tribute to some of the many libraries he has frequented over the years; from the 100-year-old City Central Library in Mysore, India, to libraries in Nairobi, Kenya and North London.

There is a framed poster in the Mysore City Central Library which features a paraphrase of a line from the novelist Neil Gaiman: "Google can bring you 100,000 answers but a librarian can bring you the right one."

Mahesh Rao states, "Libraries may have their idiosyncrasies, but the fundamentals of their ecosystem are universal. They are places of long breaks, of boredom and reverie, of solace and deliberation. They offer opportunities for unobtrusive observation, stolen glances and frissons, anticipation and nudging possibilities."

Rao quotes journalist and academic Sophie Mayer who describes a library as "the ideal model of society, the best possible shared space" where "each person is pursuing their own aim (education, entertainment, affect, rest) with respect to others, through the best possible medium of the transmission of ideas, feelings and knowledge – the book."

This month I am focusing on the young adults of the community, who no doubt believe they have the whole world at their fingertips in the form of their smartphone. In some respects this is correct, but the advantages of belonging to a library should not be dismissed lightly.

For the reasons mentioned above, we encourage our younger citizens to come and investigate our library.

Authors in the Young Adult section include Eoin Colfer, Suzanne Collins, Bear Grylls and Michael Grant as well as great New Zealand authors Maurice Gee, Des

Hunt, Joy Cowley and Margaret Mahy.

Carve the Mark by Veronica Roth



Fans of Star Wars and Divergent will revel in internationally bestselling author Veronica Roth's stunning new science-fiction fantasy series. On a planet where violence and vengeance rule, in a galaxy where some are favoured by fate, everyone develops a currentgift, a unique power meant to shape the future. While most benefit from their currentgifts, Akos and Cyra do not – their gifts make them vulnerable to others' control. Can they reclaim their gifts, their fates, and their lives, and reset the balance of power in this world? Cyra is the sister of the brutal tyrant who rules the Shotet people. Cyra's currentgift gives her pain and power – something her brother exploits, using her to torture his enemies. But Cyra is much more than just a blade in her brother's hand: she is resilient, quick on her feet, and smarter than he knows. Akos is from the peace-loving nation of Thuvhe, and his loyalty to his family is limitless. Though protected by his unusual currentgift, once Akos and his brother are captured by enemy Shotet soldiers, Akos is desperate to get his brother out alive – no matter what the cost. When Akos is thrust into Cyra's world, the enmity between their countries and families seems insurmountable. They must decide to help each other to survive – or to destroy one another.

We also have *Divergent*, *Insurgent* and *Allegiant* by Veronica Roth.



Into the River by Ted Dawe

Winner of the New Zealand Post Children's Book Award in 2013, this book was temporarily banned in 2015, but is now cleared and about to be

made into a movie.

Some rivers hold secrets that can never be told. Te Arepa is an adventurous Maori boy, bound to the history, customs and rituals of his people. Yet when he comes upon a giant eel while fishing, he is convinced the creature is a taniwha, or water demon, and follows it.... Te Arepa has always been curious about experiencing life beyond his tribe. His wishes seem granted when he is awarded a scholarship at a prestigious boarding school, far away from the Maori. Leaving behind his family and their traditions, Te Arepa sets out to discover a strange new world with customs of its own. And he comes to realize that what the water demon showed him in the darkness of the river that day changed him, and that freedom comes with a heavy price. Winner of the Margaret Mahy Award.

The library is open from 10am to 1pm on Monday, Tuesday and Thursday; 10am to 4pm on Wednesday and Friday; and 10am to 12 noon on Saturday. The library will be closed over Easter

Coromandel Lions

By Lion Lyn

A quiet start to the second half of our Lions Year (July 2016 to end of June 2017), which is great for us as many are still working! On a sad note we say goodbye to ex lion Ngaire Look, who passed away last week. Rest in peace our dear friend. You were always such fun!

On to business: firewood as usual, meetings as usual, many members away shirking their duties (I be a little jealous). All sorts of projects over the next two months as mentioned in last month's report. So if there is a project you need Lions help with, give us a call: Pres Nigel (07) 866 8045, sec David (07) 866 7104, firewood Lyn (07) 866 7722. Till next time – enjoy the sun while we have it.

**We now have a solicitor in
Coromandel town every Tuesday**



BRENDA FLAY, SOLICITOR: Travels to Coromandel on Tuesdays.

Please phone the Thames Office (868 8680) for appointments.

PARTNERS: Hayley Green and Brenda Flay

Thames Office: 611 Mackay Street, P.O. Box 31, Thames DX GA25514

Phone: 868 8680 **Fax:** 868 8718 **Email:** pjo@pjolaw.co.nz

Coromandel Office: Tiki House, Tiki Road

Our services:

**PLANNING:
PROPERTY:**

COMMERCIAL:

Asset protection, estate planning, family trusts and wills
Negotiation and advice on all matters related to the sale and purchase of land, buildings and rural property refinancing. Separations and relationship property
Company formation, sale and purchases of businesses, leases, dispute resolution, employment and related matters.

THAMES

WHITIANGA

COROMANDEL

Coromandel Budget Advisory Service

By John Gaffikin-Cowan.

Changing times

Some of you will have noticed that the house that the Budget service operates from is up for sale. By the time you read this it may well have been sold. It is unknown as to whether the new owners will be prepared to continue leasing space to Budget, and even if so as to whether we would be able to afford an, almost certain, increase in rent. This is the problem faced by so many of our local community services who are forced to pay market rent for office space. The recent suggestion being floated around the community for a local hub to house all of our services would be a most welcome solution not only for Budget but also many of our fellow providers. Unfortunately this plan is only in a very putative state and will certainly not come to fruition in time to solve Budget's present location problem.

All of this comes at a time when, as I have spoken about before, Budget's funding is being seriously threatened. The Governance and Management teams are actively addressing ways in which we can budget (yes – we do work out budgets for ourselves, too!) for affordable premises from which to provide a free, daily consultation service for all who need it. We are determined to continue and we know that we have the support of the community behind us. Certainly we are aware that there is a desperate need in the community for the service we supply.

Conversely, the other two services which we umbrella, the Community Organic Garden and the Foodbank, are thriving. The Garden is truly blossoming under Tai's enthusiastic care, and Lynda has done a great job organising the Foodbank and providing parcels on a weekly basis. The community support for both means they are in much stronger financial positions than Budget itself!

At Budget we are used to dealing with other people's problems and trying to find solutions to seemingly impossible situations. Now it is up to us to sort out our own future. I'm certain that we are up to it.

Meanwhile, if you want to discuss some of your problems, or wish to make an appointment, the Budget phone number is (07) 866 8351 and you can talk to John, Anna, Caro or Lynda. Our new office hours are Monday to Wednesday 11am-2pm for Budget Advice and Thursday 10-12 for food-parcel pick up and to make appointments. The Budget cell phone number is 022 018 0849 – we reply to texts and messages during office hours.



Driving Creek Railway

Adventures in Art, Engineering and Conservation

Tours for 2 adults or more will be at the following times until 30 April:

9.00am, 10.15am, 11.30am, 12.45pm,
2.00pm, 3.15pm, 4.30pm and 5.45pm

(please ensure that you arrive 20 minutes prior to these departure times)

Bookings advisable for all tours

Phone 07 866 8703 or 0800 DC RAIL

Email: bookings@dcrail.nz www.dcrail.nz

380 Driving Creek Road, Coromandel 3506

Magic in the Coromandel!

Mike Lindsay treats us to his new show "It's Showtime" at the end of March. The young magician grew up in small towns but after finding his passion for magic, he moved to Auckland to pursue his career three years ago.



The 90 minute magic and illusion spectacular was first taken to stage almost a year ago as a trial to test it with a live audience. After an overwhelming response from the public Mike decided it was good to take on the road. Last year he visited multiple towns with fantastic responses so this year has decided to focus on bringing the show to as many towns as he can. The Coromandel is the first on the list for 2017, then he plans to head further south after that.

At only 21 years old Mike says he couldn't have asked for a more fun career and although he's reached his long term goal of touring a stage show, at such a young age he says this isn't the end. He has much bigger plans for the future but he's giving away no clues on what they might be just yet.

He loves coming to the smaller towns. He says the audiences generally are a lot more appreciative and responsive.

So if you'd like to show some support and have a good night out with the family, you can see Mike here in the Coromandel on **24 March** (Thames), **25 March** (Whitianga), and **26 March** (Waihi). All the details and ticketing are at www.ItsShowtime.co.nz

Coromandel Patchwork and Quilters

By Sharon Currie

We are back into the swing of things with lots to do. Our patchwork group has quite a few projects planned for this year. Coming along to meetings gives us a chance to work on quilts in progress and discuss ideas. Some of us bring our sewing machines as this is a chance to work without other distractions; others bring handwork and are often surprised by the progress made during the day.

Patchwork and quilting is about sharing and helping each other. Often it is a chance to tack the three layers of a quilt together to get it ready for the quilting stage and with help this part of making a quilt is much quicker and easier than doing it on your own. "A quilt is not a quilt until it is quilted."

In April we have a class with Shirley Sparks. We will be creating an individual art piece using synthetic velvet and organza which are not the usual fabrics used in patchwork. It will be a chance to try out some new ideas and techniques.

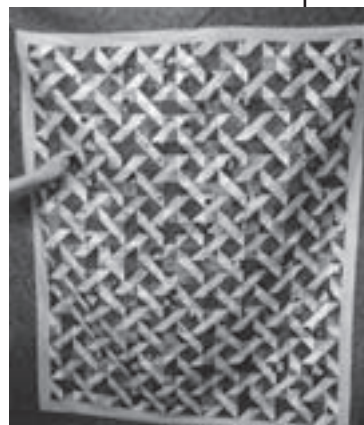
Our meetings are held 1st and 3rd (& 5th) Mondays of the month 9.30am-3.30pm, St John Rooms, Tiki Rd.

President Barb Excell

Ph (07) 866 7493

Secretary Raewyn Penrose

Ph (07) 866 8880



Scrap Quilt made by Sue Smith

Thinking about a renovation or new build and need some advice?

"Duncan is a very calm, reliable person. He gets on well with others and can see his way through problems or challenges."



coromandelconstruction.co.nz

duncan@coromandelconstruction.co.nz
(07)866-7796 021-173-7457

Coromandel Embroiderers Guild

By Diann Cade

Coromandel Guild members are offered eight local workshops each year with visiting and local tutors. The recent creative workshop was designed to encourage individuals to explore drawn thread embroidery rather than complete a set project. This was done by looking at both traditional work and its contemporary uses.

On the first day positive and negative spaces were discussed using an aerial photograph and then circles cut out of a sheet of paper. The circles were then rearranged to create patterns. This was followed by an exercise of drawing threads to form a circle and looking at the patterns to be created with the remaining threads. Various techniques were used to secure the drawn threads around the edge.

On day two needle weaving was introduced and then individuals discussed how they would like to develop a piece of embroidery based on the knowledge that had been gleaned.

A comment from one of the participants "...by the end of the two days I found I was trying new techniques and definitely starting to think outside the square. I am keen to attempt creating my own designs!"

There were similar comments from others. What more could the tutor wish for. A great two days of exploration.

For further information about the Coromandel Embroiderers Guild and related activities contact Jill Wilson (07) 866 7484



The Legacy of the Coromandel Senior Settlement Trust Lives On

By Rodney Denham

Founded in 1986, late in 2016 the Coromandel Senior Settlement Trust (CSST) came to a peaceful end, its foundation purpose fulfilled. In its 30 years of existence it had not only fundraised for, and completed, the development of Elizabeth Park senior citizens' village (which it was set up to do), but had distributed of the order of \$1,000,000 to the Coromandel/Colville community and organisations that serve its people. The vision and achievements of its founders and their successors need to be honoured.

Along the way the CSST had acquired the Anglican Church's "Bizarre" charity shop, initially as a fundraiser for the development of the village, but as the sale of sections covered the development costs The Bizarre, going from strength to strength, became a source of funds for distribution back to the community through an eventually formalised annual Donations Programme and other "one-off" special contributions.

With the transfer of the last section in Elizabeth Park, under the terms of the Unit Titles Act by which it was set up, the CSST ceased to have any involvement or proprietorship in it. And its sole responsibility and activity became the running of "The Bizarre" and the distribution of the proceeds of its trading after costs have been met. This called for an updated statement of purposes and structure. So it was decided to dissolve the CSST and create the Coromandel "Bizarre" Charitable Trust which would take over all of the CSST's remaining assets and responsibilities including the ownership and management of The Bizarre.

So as far as The Bizarre is concerned, nothing has changed but the name of the proprietor.

The Coromandel "Bizarre" Charitable Trust is registered as a charity (CC53777) and details of its purposes, etc., can be seen on the Charities Services website www.charities.govt.nz.

Coromandel Contract Bridge

By Judy Bronlund

The competition for April is the Hauraki Pairs. This is our fourth competition for the year. On Easter Monday we will be having a fun night. If all goes to plan Val will have started lessons for some future members of our club. I look forward to seeing you all join in the competitions. New members and visitors are most welcome to join us on a club night. We meet each Monday evening at the St John rooms.

Contact Val (07) 866 8730 or Lyn (07) 866 8858

Peninsula Pest Services Ltd.

- We are trained and equipped to control all insects and rodents and other Creepy Critters
- Both residential and commercial maintenance programs
- Meth checks, sampling and lab testing

Ph 07 866 5307 Mobile 027 778 8836
Email penpest.nz@gmail.com



Good fishing on Mussel Farms

The industry requests that all boaties taking advantage of better fishing inside Coromandel Mussel farms, please:

- Tie up to the farm and never anchor
- Do not run over any farm structures or ropes
- Do not tie up to and move off any line being worked by a farm vessel
- Always discharge any sewage more than 500m away from the farm



Adult Literacy Rural Trust

By Christine Ramsey

April already and the schools are back and the children settling in. Back in the routine and the homework is piling up.

Are you able to help your children as much as you would like? Or could you use a little help understanding what it is they need?

We are here. Whether it is just help with understanding or you need to go back to basics, we can help with any literacy problem.

If this sounds like you or is someone you know, we are just a phone call away. Contact us on 0800 891 339 and Wendy will get you sorted!

It's free and it's anonymous.



Coromandel Family Health Centre

Kia Ora,
This year is just flying by!

We now have the influenza immunisation available. This vaccine is free for pregnant women and anyone over 65yrs. Remember – influenza isn't just a bad cold it can be serious and can kill. You cannot get influenza from the vaccine. Protect yourself, your family and your community.

We are excited to announce we have just had a new X-ray machine installed. Our old machine was purchased 20 years ago by the Lions Club and had become unreliable. Our new unit is a state of the art digital system, which is fantastic. It is environmentally friendly as no more toxic chemicals are required. It's fast and only takes five seconds to upload the X-ray to a computer. It requires less radiation exposure and gives a consistently high quality image.

The X-ray service will be available on Mondays, Tuesdays and Wednesdays with Bryan. We are hoping to extend this service to 24/7 for injuries in the near future.

#dontlettheflugetyou
#xrayforyou



Scott Simpson MP For Coromandel

Goldmine Re-Use Centre Opened

The new Coromandel Goldmine Re-Use Centre has proved a great success since it started trading late last year. Operated by the Coromandel Independent Living Trust and in conjunction with several joint venture partners including TCDC and Smart Environmental, the centre is a boon for Coromandel and Colville people wanting to reduce the volume of waste going to landfill.

Reusable items can easily be removed from the landfill stream and that's exactly why the project received significant government funding through a grant from the Ministry of the Environment's Waste Minimisation Fund.

I am really looking forward to being at the official opening Lifting NZ Super age

Superannuation will always be an issue that concerns us on the Coromandel given our electorate has the second largest number of people in the country receiving the pension.

I like the proposed changes. Lifting the age of entitlement to New Zealand Superannuation from 65 to 67 in 20 years time is, as Prime Minister Bill English has said, "the right thing to do".

We're living longer and living better as we age than perhaps our grandparents or even our parents' generation did. The proposed changes make sense and it's hard to deny they are not going to be needed by the time they will come into effect.

The plan is to increase the age of entitlement for NZ Super by six months each year from July 2037 until it reaches 67 in July 2040. I am also very supportive of the move to lift the eligibility for superannuation of immigrants from 10 to 20 years.

Preparing for Emergencies

Our civil defence systems have been thoroughly tested recently with last month's wet weather bomb that created havoc across the Peninsula. As usual our communities rallied around and we got through.

While the extreme weather has passed, history repeats, so I was pleased to learn that a new nationwide channel for sending alerts about emergencies to mobile phones is on track to be up and running by the end of the year.

"Cell broadcast alerting" is a new way of sending information to mobile phones in a set area without people needing to download an app or subscribe to a service.

The alerts will appear similar to text messages. They are received automatically and for free by all cell broadcast enabled mobile phones in the area.

It will get information about an emergency such as tsunami, earthquake and extreme weather events to at-risk communities faster and more reliably than ever before. Plus, cell broadcast technology is not vulnerable to network overloading, so even when the networks get busy after a disaster, alerts can still be sent quickly.

The Ministry of Civil Defence and Emergency Management and the three mobile network operators – 2degrees, Vodafone and Spark – are working together to enable cell broadcast technology in New Zealand for the first time.



MASSAGE THERAPY COROMANDEL



- ★ Deep Tissue Remedial Bodywork
- ★ Relaxation / Swedish massage
- ★ Lymphatic Drainage
- ★ Hot Stones Massage

Lynley Ogilvie, RMT.

Call for an appointment: (07) 8668684 or 021 866868

Scott Simpson | 614 Pollen St. Thames MP FOR COROMANDEL | 07 868 3529 www.scottsimpson.co.nz

"A large part of my job is helping people. Please contact my office for an appointment"

email: mpcoromandel@parliament.govt.nz

Authorised by Scott Simpson, 614 Pollen St, Thames and funded by the Parliamentary Service



Coromandel Bowling Club

By Linda Wright

The bowling club has just had an amazing Seafood Tournament. 28 teams played eight games over two days, one hour on the green then the next in the club or under the marquee, feasting on mussel fritters with refreshments all weekend, plus seafood dinner Saturday night. All of our members did a fantastic job of looking after our visitors from Auckland, Hamilton, Pukekohe, Taranaki, Tauranga, Mercury Bay, Tairua, Thames, Thames Coast, Waihi Beach, Paeroa and Te Aroha. They all had a great weekend in Coromandel.

Seafood Tournament winners

1st Division: 1st – Wayne Edmonds, Shannon Merino, Pania Roberts and Lou Rajek, from Mercury Bay and Papakura; 2nd – Ross Marshall, Jilly Riggs, Larry Dixon and Simon Stephen, Thames Coast; 3rd – Colin, Lindsay, Dolly and Jason, Coromandel.

2nd Division winners: 1st – Maka's team from Papakura; 2nd – Brian Froggatt's team from Onehunga East; 3rd – Maureen and son Richard, Dianne and Vi from Coromandel and Browns Bay.

A huge thank you to our sponsors for the Seafood Tournament: Goldridge Marine Farm, Coromandel Court Motel, Richardson's Real Estate, Coromandel Takeways, Moana New Zealand, Mussel Kitchen, Coromandel Smoking Co, Dickie and Raewyn Berghan, Philippa and Bob Medlock, Pepper Tree Restaurant and Bar, Salty Towers.

Twilight Bowls

We have just finished four weeks of Twilight

Combined Clubs Of Coromandel THE CLUB

Bowls with 14 teams playing on Tuesday evenings, It was great to see over 60 casual and first time bowlers coming on the greens for one hour and judging by all the laughter, they all enjoyed themselves.

Again a big thank you to our Twilight Bowls sponsors: Pepper Tree Restaurant and Bar, Admirals Arms Hotel, Richardson's Real Estate, and John's Naughty Beans Coffee.

The winners were the Lopsiders – Bianca, Haydon, Stevie, and Alan. Runner up – Hot Property, Kim, Chick, Graeme, and Lori. 3rd were Late Starters – Christen, David and Colin.

And the winner of the fancy Easter Hat on Finals night was Village NDY – Trish, Rex, Ross and Nevin. Well done everyone.

Last month we had a few members playing in the Trust's New Zealand Open, and congratulations to Lindsay Nicholls coming 3rd equal in the women's singles.

We have four Thames Valley Rep Players playing for the valley in Wellington. Good bowling to Lindsay, Colin, Irene and Graeme.

We are drawing to the close of our bowling season at the end of April, but there is still plenty of bowls to be played in town and in the Thames Valley. If you would like to join members Fri afternoons from 3.30pm for a roll-up, you would be most welcome.

Contact Linda Wright 027 561 3477 or (07) 866 8440



Winner of the Twilight Bowls Easter Hat – Village NDY – Rex, Ross, Trish and Nevin

RSA News

By Pat Williams, Treasurer

Our AGM was held earlier than usual as our newly elected President was off on a South Island Trip, which had been on the family bucket list for a long time. Our executive committee is in place and we look forward to their input. Planning for Anzac Day is well in hand and we look forward to a good turnout on the Day. Pray for a fine day. We are into the third year of special 100-year Commemorations (1914/1918). A large amount of new badges are on hand; samples of same can be seen at the Club Rooms.

Thank you to members who have paid their subs. Notice was sent to all members on or around 6 December. Hand delivered, posted or by email. I know cos I do it!

Anzac Day – Coromandel Town – 25 April 2017

ANZAC Day Commemorations at Coromandel Town on **Tuesday 25 April** will be held at the Memorial Reserve (Coromandel Soldiers Memorial in front of the old Government Building), 355 Kapanga Road.

Timings are as follows:

9.45am – Parade Assembles at Citizens' Hall for March to Memorial Reserve

9.50am – Parade Marches Off to Memorial Reserve

10.00am – Assembly of Parade and Public at Memorial Reserve for commencement of service.

All welcome.



Winners of Twilight Bowls – The Lopsiders – Steve, Alan, Bianca and Hayden



Runners up Twilight Bowls – Hot Property – Graeme, Lauria-Ann, Kim and Chickbowli

Coromandel's Premium Accommodation, Management, Linen and Cleaning providers..

Luxury Apartments

Holiday Managements

Long Term Rentals



Luxury Apartments

Holiday Managements

Long Term Rentals

Diane Arundel Property Manager

265 Kapanga Rd, Coromandel

07 8668803

0274 361729

office@accommodationcoromandel.co.nz

100% Coro Ltd MREINZ



Te Kouma

Perfection on Puriri

want as new, with bush & seaviews at Te Kouma?

- Superbly rebuilt and renovated 3 brm home
- Set in a bush clad section natives & stream
- 2 level living with 2 brm lower apartment
- Super quality materials and craftsmanship
- Fab big double garage with extra bthrm
- Gorgeous north facing seaview decks x 2!

At the top and just tip top, this is an immaculate, low maintenance home with space to burn for family living, holiday home or B & B guests. ... a small fortune spent, yours for just...

Open Home: Easter Weekend 56 Puriri Rd, Te Kouma

For Sale Price by Negotiation over \$749,000
www.harcourts.co.nz CO1848

NEW LISTINGS



Kennedy Bay

Bay Lifestyle...3 Blocks!

...only a hop over the Hills to K Bay to take your pick of 3 very affordable lifestyle blocks, all within mins of the beach and full freehold titles

- 1; 8.8ha (21acs) all flat and fertile hay paddocks, with power and elevated hill house site.
- 2; 8.06ha (20acs) flat and terraced grassland, choice of two lovely flat raised house sites
- Both are rear lots, across the ford and \$259,000ea
- 3; 7.05ha (17acs), front lot with road boundary, good grassland, choice of sites, in the Coastal Living Zone with subdivision potential...\$359,000

Make your Way to the Bay
for Lifestyle living every Day!

For Sale \$259,000 - \$359,000
www.harcourts.co.nz/CO1852

THE WOW FACTOR!



Coromandel

Superb...Stunning...Spectacular...

...so many superlatives for this dream design...

- Ultra modern home with a huge heart.
- 4 birms, 4 ensuites, spacious open plan living...
- Massive front decks, cosy patios, triple gggg...
- Space age night lighting extraordinaire.
- Magnificent elevated town and sea views
- DOC Reserve bush backdrop with kiwi and tu

Now ready for inspection, here's a seriously fabulous home for entertaining, to enjoy with friends, big family or with great B & B potential. The view is breathtaking, the home is outstanding if you want absolute quality this really is superb.

Open Home: Easter Weekend 104 Main St, Coromandel
For Sale \$799,000
www.harcourts.co.nz CO1841

NZ's Most Trusted Real Estate Agency

2013, 2014, 2015 & 2016 (Readers Digest Annual Business Survey)



BEACH BACH



Port Charles

2 bedroom bungalow with water views. Situated on a flat nearly 1/4 acre (969sqm) section with ample room for boats, tents and caravans... Directly across the road from the water. It's time to get yourself to Port Charles.

For Sale \$390,000

www.harcourts.co.nz/CO1840

STUNNING



Tuataewa

Split over 2 levels and 2 buildings, this stunning home would make the perfect holiday refuge for a large or extended family. Nestled privately amongst native forest and with impressive views of the Pacific it's sure to tick all the boxes!

For Sale Now \$630,000

www.harcourts.co.nz/CO1780

BUSH BABY



Coromandel

Gorgeous 2 bdrm cottage on 6845sqm, including cute separate sleepout. Tastefully redecorated with sun drenched open plan living and just the best deck from which to enjoy superb sunsets.

Can you see yourself at home here?

For Sale \$465,000

www.harcourts.co.nz/CO1835

BUSINESS



Coro Takeaways - Coro Gold!!

Our longest established takeaways showing exceptional returns & gross margin - she's a little Colombine!!

If you want a business with serious income, she's now back on the market with excellent Leasehold and longer term Freehold Options.

For Sale \$340,000+GST+Lease

www.harcourts.co.nz/CO1800

INVESTMENT



Coromandel

Multi income from these 3 x 1 bdrm flats, in good sound condition & only a short stroll to town.

Low maintenance, concrete block, some interior renovations, big cobbled rear carpark & new driveway, with sitting tenants for instant income

For Sale \$595,000

www.harcourts.co.nz/CO1847

REDUCED



Coro Kebab House

Newly established and very well appointed little shop, only been in operation a year and showing great potential! Sadly for sale but your gain with all the hard work done.

Be quick, it will go. Let's talk Turk - ey!

For Sale NOW \$90,999+GST+Lease

www.harcourts.co.nz/CO1843

LIFE STYLE



Coromandel

Outstanding water views from the potential building site on this 15.68ha bare block. Stream on the boundary and small pockets of native bush. The view is captivating and makes this block one of the best around.

For Sale \$630,000+GST+Lease

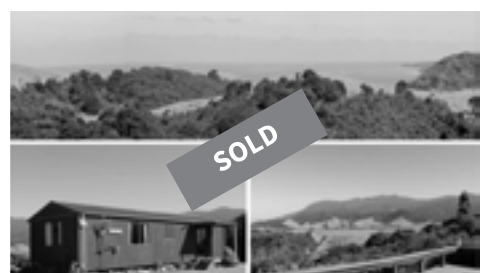
www.harcourts.co.nz/CO1813

Talk to us About
Getting Your Property

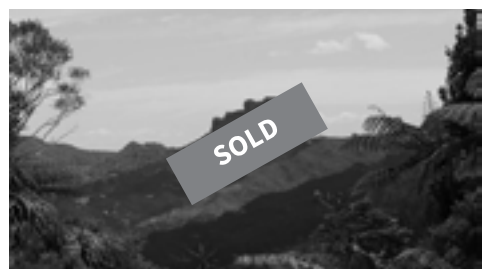
SOLD



SOLD



SOLD



SOLD



Ezy

0274 777 900



Jan

0274 788 930



Caro

0210291553



Diane

(Property Manager)

0210 315 613



Coromandel Independent Living Trust

The Incredible Years

This month CILT will roll out the first Incredible Years programme for 2017.

Do you sometimes find your child's behaviour challenging? Do you find yourself wishing you knew how to deal with the situation in a better way?

Incredible Years is a 14-week parent programme which gives parents useful tips and skills to be more able to deal with a child's behaviour in a calm and reasonable manner. The course is beneficial for children as their parents gain the skills to support their child in becoming school ready through developing an understanding of child development. All parents who have done this course have enjoyed the programme and say they have gained understanding from both the course content and from the experience of being part of a group of parents with similar needs.

The Incredible Years was developed in the States by talented Psychologist Carolyn Webster-Stratton who, during the course of her many clinics with parents, synthesised the most crucial and important aspects of positive parenting and ways of supporting children well through their early years.

This programme has been offered in Coromandel through CILT as a contract from the Ministry of Education. It is part of the Positive Behaviour for Learning Initiative and many schools throughout the country have been involved in the Incredible Years teacher programme.

All enrolled parents receive a book and weekly information sheets. Parents practise the skills learnt during the session in the following weeks. The programme is very well resourced by the Ministry of Education.

There is no cost for this programme.

CILT is running this programme in Coromandel and Whitianga. It began on 21 March in Coromandel and 22 March in Whitianga. It runs every Tuesday (Coromandel), and Wednesday (Whitianga), for the next 14 weeks, except for the school holidays.

For further information or to enrol please contact: Kate Donoghue 027 692 6494.

Volunteers at The Goldmine

Volunteers have been beaver away outfitting the Goldmine workshop with

benches as well as repairing goods that are sold through the Goldmine shop. All proceeds from these go back into community operations.

The workshop is developing into a place where volunteers can get together and tinker away, repairing, creating and discussing ideas.

Chris has leapt in with brilliant ideas and is restoring goods for a new lease in life.

Wally and Mike have been building a workbench for the workspace, and collecting tools to equip the workshop fully is ongoing. Gary, Howard and Raymond collected flax and Peter from Project Crimson Nursery kindly donated native trees to help landscape the site.

So if you have any spare tools you can donate, or would like to join the gang in what is becoming both

a creative and practical space, please let us know.

Contact Carol at volunteers@cilt.org.nz or 0274 864 043.

The Work Co-Op

Our group have been doing great craft work at Jo McNeill's house two mornings a week. Watch this space for more news on this to come. However both the Work Co-Op and CILT are saddened by the passing of Mike Williams and would like to offer condolences to his whanau at this time. During the off season for the mussels Mike would volunteer at the Work Co-Op, taking the guys out on lawn mowing, helping at the urupa and generally being always there for us.

E te hoa, moe mai ra i roto i to moengaroa.



Wally and Mike at The Goldmine

The New Normal

By Catherine Delahunty, Green MP

Old hands from the Peninsula can recall many flood events. We remember the loss of life, the livestock swept away and the massive slips. I can recall the road being blocked between Colville and Coromandel for more than a month. We drove to a meeting in Thames about mining via Kennedy Bay. I can remember flash floods that isolated Thames from the plains and the weather bomb several years ago which devastated the Port Jackson and Port Charles area. So serious flooding is not new for our region. But serious flooding across the whole Auckland region is new. The lesson from the last week is that we have to expect the unexpected as well as the cyclic storms we are accustomed to. Despite the tiresome denials of the dwindling few some people, including the President of United States, do not accept as real, we are now in climate crisis across the planet and Aotearoa will not be immune. As we can see from the weekend, the infrastructure is being overwhelmed by sediment and the quantity of sediment is a symptom of poor land management, especially forestry. Our area is also the front line of forestry impacts and the storms expose how forestry companies are managing or failing to manage the slash and erosion from their operations.

There is no magic place for forestry debris and sediment to wash into. There is a precious body of water which is already under stress, Tikapa Moana, the Hauraki Gulf.

If anyone wonders why so many of us oppose mining activities in our hills just have a think about weather bombs in vulnerable catchments.

Meanwhile in Parliament the government is trying to defend a confused freshwater policy that tries to promote business as usual while moving the goal posts in freshwater quality measures. The subsidies for the big irrigation schemes continue as if we had no dirty and overallocated river. I am travelling around meeting freshwater champions everywhere who support smart farming and strong rules to protect our precious, finite source of life.

I hope those who were flooded are able to restore their homes. When I lived at Colville we had to shovel mud out of our kitchen many times and it's a dirty job. Hoping it won't happen again is not enough. We need political leadership that ensures catchments are better managed because the big rain will come again.



**Coromandel
Liquor**

OPEN 7 DAYS TILL LATE

Beer • Wine • Spirits • RTD's

GREAT
PRICES,
GREAT
SERVICE



**Waikato Draught
24pk Bottles
\$34.99** Ends 30/4/17

**GOLD CARD
ACCEPTED**
- conditions apply

112 Wharf Road, Coromandel Town
Ph 07 866 7024 Next to Coromandel Takeaways

Ann's Good News, Naturally

By Ann Kerr-Bell

Toxicity, Leaky Gut and Disease

Toxicity refers to the degree to which a substance is poisonous. Any substance that interferes with the normal processes of the body has the potential to be poisonous.

We can be exposed to toxins via our lungs and skin, but most often via the digestive system.

Toxicity from the inside - (Endo - toxicity)

The major source of toxicity for most people is the products and by-products of their digestive system. Foods, if not digested correctly, can become fuel for the growth of dysbiotic (harmful or pathogenic life form) organisms. This allows yeasts, unfriendly bacteria and other organisms to grow and proliferate in the digestive system. This is compounded by poor 1) dietary choices (foods high in sugar or processed, preserved, flavoured, coloured with chemicals for example); 2) the use of medications, which affect the bacterial populations (antibiotics and oral contraceptives etc); 3) stress and diseases of the digestive system. These organisms produce toxic chemicals and when they die, fragments of the cell membranes can be absorbed into the blood stream and trigger a massive inflammatory response from the immune system.

When Protective Mechanisms Fail

Our bodies have several mechanisms to protect us against toxins, however if they fail, the toxins will be stored in adipose or fat tissue and bone. This can create special problems especially at times of stress or during fat loss. The stored toxins will be released back into circulation, causing dramatic increase in the amount of toxins that other systems are exposed to and eventually damage these systems as well.

Leaky Gut Leads to Toxicity and Illness

This process often begins with either direct damage to the lining of the gut (infection, medication or inflammation) or a long-term overgrowth of dysbiotic organisms. This leads to loss of integrity of the cells that line the gut, which allow partially digested proteins, fragments of bacteria and other waste from the gut into the lymph and bloodstream.

Normally the tiny microscopic filaments on the gut wall carry out some degree of detoxification through the production of an enzyme called Cytochrome p450. However if this enzyme fails, then the liver and eventually the immune system have to deal with the waste products from the gut that are entering the bloodstream. Eventually this overwhelms their ability to cope, and disorders of the liver and immunity occur.

Symptoms

Headaches, muscle/joint aches, nerve aches, recurrent infections, sensitivity to environmental chemicals and fumes including perfumes, and nutritional supplements, depression, infertility/subfertility, lethargy, fatigue, mood swings, poor short-term memory and concentration.

Diseases

Allergies, acne, asthma, autoimmune diseases, eczema, ADHD, autism, fibromyalgia, inflammatory bowel disease, hormonal imbalances/diseases, cancer, atherosclerosis, chronic fatigue, multiple chemical sensitivities, neurodegenerative diseases (eg. dementia, Alzheimer's), reproductive disorders.

Turn the worm. Think prevention. Ask how, learn how. Be proactive. Know that the majority of the above issues are preventable and can be cured. Think long-term for our future generations. Remember – Food can be your fast medicine or your slow poison. Toxic, processed foods and drinks, and poor dietary choices, are largely contributing to an epidemic of reliance and/or dependency on pharmaceutical agents or surgery.

Good News

The worm actually is turning. People are feeling great with simple changes to what and how they are eating. Nature made, not manmade. It's common sense, naturally.

Have a live blood analysis – Do you have leaky gut, liver stress or damage, poor immune status, inflammation or nutritional imbalances?

Do you have mineral imbalances/deficiencies? www.activeelements.com User name: 259077 Password: 579819.

Feel great with body work: osteopathic general articulatory technique, deep tissue, sports massage.

Phone Ann Kerr-Bell on 021 046 1647



Coromandel Walking Group

By Irene Dunn

Never mind the rain – let's get walking. It's only water after all! Tie up those shoe laces and join us each Tuesday and Thursday at 9am at Lotto Dairy for an hour's walk at your pace.

It's a great time to be outside walking. It's a little cooler and soon we'll see the autumn colours appearing in the gardens around town. We walk for an hour around many different routes around town and sometimes at Whangapoua. Some walks have a hill, others not, but whatever your pace or limit is there's always other walkers to join you.

Do join us – let's get walking!

Contact Ruth (07) 866 7246

Poetry SPOT

Chameleon

By Beryl van Donk

She draws me like a magnet,
wooing, caressing, seducing,
and I succumbing to her charms.
The clarity of her soul beguiling,
my senses lulled to all
the things she is for me.
A gentle mistress.
But wait! Her mood is changing,
no longer a willing servant
she rises like a demon possessed
with powers beyond me,
threatening, swamping, crashing
with a fury I no longer comprehend.
My gentle mistress fled, and I am left
as always, with an awesome wonder
at the ever changing, unnameable sea

Natural Medical Centre

The natural alternative for all your health requirements

At Tiki House,
Coromandel.

For appointments,
phone or text: 021 046 1647
or email: annk-b@ps.gen.nz
www.naturalmedicalcentre.co.nz

Ann Kerr-Bell

B.Hlth.Sc. (Comp.Med.)
Adv.Dip.Naturopathy
Adv.Dip.Med.Herb. MNZAMH
Naturopath
Medical Herbalist
Nutritionist
Massage Therapist

Chartered Accountants The Hauraki Taxation Service Limited

Full-time Accountants in
Coromandel Town since 1995.

Open Monday-Friday 9am-4pm

COROMANDEL 07 866 8660 THAMES 07 868 9710



Coromandel Town Information Centre

By Sandra Wilson

Again our figures for February are up by 7% on last year.

I would like to thank Karen Goode for her hard work and innovative ideas at the centre. Karen has left to travel overseas.

From 13 March our hours are 10am-4pm daily.

Looking at volunteering? Come in and see me or ring (07) 866 8598.

I thought it would be good to share with you some of the questions that we get asked:

- Where do I get a copy of the NZ National Anthem both in Maori and Pakeha, with the words? (Ministry of Culture and Heritage, Wellington) (Australian enquiry).
- Where do I get the best pavlova?
- Where can I find fossils?
- How's the fishing up there in Coromandel?
- Where can I get some aged sheep manure? Is there a sheep farm in town with a sheep shearing shed?
- Can I order some mussels and oysters from you for a wedding this weekend?
- Are there any good cactus gardens in the area to see?
- How do you cook mussels?
- Can we see the processing of oysters/mussels – have a tour of the farm/factory?
- Where can you get a road code?
- When is it going to stop raining?
- Where can I see a kiwi?
- What can we do here?

Events

14-17 April: Colville Easter Festival

Saturday 6 May: Seafood Fest: anyone or any groups wanting to take part in the Wearable Arts section please contact Gail on (07) 866 8797.

Coromandel Snippets

By Lyn Dear

I've been collecting snippets of history about the township of Coromandel and local environs for many years and thought your readers might be interested.

Goats caused problems for early residents

Coromandel Magistrates Court from Auckland National Archives

Doyle v Fergusson 10 Jan 1867

Damages £1.10.0

Michael Doyle sworn states, about a month ago a goat of mine was killed about 10 days after we found her injured about the head. We nursed her but she died. I'd bought her in Parnell 3 years ago.

I made enquiries and found that a boy called Sandy Ellis who told me his brother was present when the goat was injured. Mr Fergusson being present, took the dog from the road. One day at my work Robert Lee said he saw the dog attack it and so did John Ellis. I asked Mr Fergusson about it and he said he didn't know it was my goat. He said he would pay £1 for it but as yet I've not received payment.

Robert Lee sworn states, I am a colourer and work at the Kapanga. I heard the dog at the goats, I saw defendant take the dog away.

Before Judge: You had Bob Aylett with you at the time (to Fergusson).

James Fergusson sworn states, I am a carter at Coromandel. I pulled the dog off the goat but couldn't see if it had been bitten. It looked alright to me and it walked off apparently with nothing the matter with it. This is all I know.

Damages £4 (abridged)

Sykes v Woolams 7 May 1868

William Sykes sworn states, I am a settler residing at Kapanga. For the last four months I have been troubled by defendant's goats. For two months one goat in particular used to come in to my garden constantly in the morning and sometimes in the evening when the corn was 6 - 9" high. There were generally from one to ten goats belonging to defendant in my garden. After I drove them out frequently, I complained to defendant himself about it and the only satisfaction I got was that I was to give them a good flogging.

Job Rhodes (quaker) affirmed, I have seen goats belonging to defendant in plaintiff's garden. I have seen one goat in your paddock that I could quantify, I have seen the flock, which that goat was with in your paddock. I have seen corn growing in your paddock. I could not say how much the corn would be worth if it had been left alone as I have never been inside the fence.

Frederick Woollams sworn states, I am a storekeeper, residing at Kapanga. On the 28th of last month I was riding along the road, plaintiff stopped me and asked me, "What about these goats of yours?" I asked him what was the matter. He replied that they had destroyed his crop. I told him I was busy then but that I would see him about it. I did not see him till a day or so later when he presented me with a bill for £4 for damages. I was so completely astounded at the exorbitant charge that I told him he would have to summons me.

Spicers Letter 1857 at Auckland Library special collections

He wrote: Pita greeted us warmly and seemed glad to see us in this part of the world. Soon after we passed through a gigantic gate hung on a pivot on the top of a strong post. The pivot ran through the top rail of the gate which extended double the length of the under rails and was of massive timber. This extension caused the gate although so heavy to be easily moved as the height of the gate was counter balanced by the propelling beam of the upper rail on the opposite side of the pivot. This is an American notion of the proprietor, a man named Paget, and although clumsy looking, is very simple and effective and where timber is so plentiful and cheap enough. No hinges would probably be strong enough to support so massive a gate. Sketched by my son Campbell because I could not envisage this gate.

COROMANDEL PLUMBING

(1986) LTD

PO Box 23, 1740 Tiki Road, Coromandel

CRAIG DUDSON

Phone/Fax 866 8814

A/Hrs 866 8837



Plumbing, Drainlaying and Gasfitting



GaiaDecorators

PAINTING HOMES
ACROSS THE COROMANDEL

LIMITED

The Professional Finish For Every Building

Painting • Specialist Finishes • Wallcovering • Feature Walls • Maintenance

Mark Gaia 021 295 5532 | 07 866 7485
COROMANDEL | gaiadecorators@gmail.com
www.gaiadecorators.co.nz

Residential
Commercial
Free Quotes

Llandem Consulting Engineers

Derek Stewart

C.P.Eng MIPENZ

- Structural
- Civil
- Geotechnical

Ph/Fax: (07) 866 6704

Cell: 027 442 4234

7c Torehina Hts, Waitete Bay





The Bizarre

Nothing has changed - the Bizarre goes on as it has always done
It is Coromandel Town's only "Op Shop" & after meeting expenses
ALL THE PROCEEDS OF ITS TRADING GO BACK TO THE LOCAL COMMUNITY
THROUGH ITS ANNUAL DONATIONS PROGRAMME AND
OTHER CONTRIBUTIONS TO COMMUNITY PROJECTS

*So help your local community by continuing to donate saleable
goods, they are very much appreciated, a big Thank You.
Shopping at the Bizarre supports your community*



Coromandel 'Bizarre' Charitable Trust

P O Box 138, Coromandel 3543

The Trust has approved the following donations from the available income from the 2015/2016 financial year

Coromandel Community Organic Garden	\$2000	Coromandel Independent Living Trust	\$2000
Coromandel Music Society	\$500	Coromandel Golf Club	\$700
Coromandel Embroiderers Guild	\$1440	Pastel Artists Coromandel	\$1000
Coromandel Art Group	\$550	Coromandel Rescue Helicopter Trust	\$5000
Hospice Waikato	\$3000	Colville Social Services Collective	\$500
Coromandel Players Inc.	\$3000	Colville Community Health Trust	\$750
Coromandel Youth Support Association	\$4000	Coromandel Budget Advisory Service	\$5000
Coromandel Playcentre	\$526	The Colville Cooperative Society Ltd	\$750
Spirit of Coromandel Trust	\$2000	Colville Music Society	\$500

*Most of the funding for these donations came from "The Bizarre's" trading income.
Help our charity shop by donating goods for it to sell, and help yourself and it by shopping there.*

Mana Update

By Penelope Carroll

We give thanks for places of simplicity and peace.

Let us find such a place within ourselves.

We give thanks for places of refuge and beauty.

Let us find such a place within ourselves... Michael Leunig

People take many paths to finding a place of refuge within. Providing space and support in a place of “simplicity, peace, refuge and beauty”, so that we can come home to ourselves and “realise our essential unity”, is fundamental to Mana’s mission. Over the past three decades thousands have journeyed within at Mana, supported by teachers and practices from around the world, as well as by Mana staff and trustees. Meditation, yoga, t’ai chi, dance, singing, sound, body-work and other retreats have encouraged gentle self-exploration – and continue to do so.

In addition to these retreats and courses we have decided to offer a series of four-day “home-grown” retreats, facilitated by Mana staff and trustees. These retreats will allow space, time and support for journeying within, with meditation, yoga, guidance, and personal prompts for self-inquiry offered by Shanti, Sarah, Hedwig, Jade and others. The first of these retreats will be over Easter, with “Coming Home” the focus. Participants will be supported through a process of looking at the “Shadow”, “Letting Go”, and then “Celebrating” aspects they would like to bring into their lives. The next retreat in the series, which will take place in June over Queen’s Birthday weekend, will have a focus on different aspects of “Wellness”. As with our Relaxation Retreats, participants can choose to take part or not in any or all of the offerings (some may prefer to use the opportunity for a self-directed personal retreat, and/or remain completely in silence, for instance), and there will be nourishing bodywork treatments available.

The shorter days and lengthening hours of darkness following the autumn equinox invite inward journeying; and Mana’s bountiful autumn harvest of pumpkins invites creative ways to enjoy this delicious vegetable! Below is a recipe from the Mana kitchen combining pumpkin and quinoa: **Sarah’s Red Quinoa Salad.**

Ingredients: 1½ c red quinoa; 3 c water; 2 c diced pumpkin; 3 tbsp olive oil; 1½ tsp mixed herbs of your choice; 1 red capsicum; handful of capers; ½ block feta cheese; parsley and extra olive oil to garnish; pepper and salt to taste.

Method: bring quinoa to boil in water and simmer until cooked (when water is absorbed) and roast bite-sized pieces of pumpkin (sprinkled with herbs) in olive oil. Combine the cooked quinoa and pumpkin. Add diced raw capsicum, capers, crumbled feta cheese, and pepper and salt. Toss. Drizzle with a little olive oil and top with freshly chopped parsley.

Great served with a fresh green salad and hunks of home-baked fresh bread.



Passion fruit sorbet

By Deborah Hide-Bayne

The rain has really affected my veggie garden this month – tomatoes and peaches rotting on the plant and a carpet of passion fruit under the vine...

I made enough sorbet to fill a two-litre ice cream container, just multiplying the recipe by five – so I used 40 passion fruit, and five lemons.

It is sweet but deliciously zingy and the flavour of the passion fruit really comes through.

Passion Fruit Sorbet

For 4-6

200ml water

185g caster sugar

8 passion fruit

juice of a lemon

Boil the kettle and measure out the water into a small saucepan. Add the sugar and heat, stirring until the sugar has dissolved. Put aside to cool.

Spoon the flesh and seeds of the passion fruit out into a food processor, add the sugar syrup and blitz for a few seconds. This will loosen the flesh from the seeds. Pour the mixture into a sieve and push it through with the back of a spoon. All that should be left in your sieve is seeds. Add a spoonful of seeds back to the mixture and discard the rest of the seeds.

Pour the mixture into an ice cream container and put in the freezer. Stir every couple of hours (the more you stir the smaller the ice crystals will be in your sorbet).



retreats
workshops
events

Mana Retreat Centre, Coromandel New Zealand

Full schedule on our website manaretreat.com

31 Mar - 3 Apr	Biodynamic Osteopathy Phase 4a <i>w/ Robyn Seamer & Manuela Da Rin</i>
4-11 Apr	Iyengar Yoga <i>w/ Glenn Ceresoli & Kerikeri Yoga</i>
13-17 Apr	Coming Home: A Deepening Retreat for Self Enquiry at Easter <i>w/ Mana Retreat</i>
18 Apr	Open Floor Tuesday morning class <i>w/ Geordie Jahner & Teachers in Training</i>
21-23 Apr	Sing your heart out <i>w/ Tony Backhouse</i>

Spaces available Contact be@manaretreat.com or 07 866 8972



Now servicing all makes & models of
Lawnmowers,
Ride-on Mowers,
Chainsaws and Sharpening,
Gen Sets,
all Small Engines,
Boat Tractors
and Quad bikes




Light Engineering & Machining
MIKE McCALL • 07 866 8469 • 027 223 7919

1060 Colville Road, Coromandel
Email: mikepapeng@gmail.com

Rangatahi

CELEBRATING OUR CHILDREN

Coromandel Community Preschool

By Debra Attwood



Let's hope that the weather has settled down again after the torrential rain we have experienced in mid March, before winter weather sets in.

We have been busy within the centre with our focus for this year being Literacy.

What does literacy mean to you and what does it look like in action at our preschool? We would like you all to tell us what literacy looks like for you. How do you promote literacy with young children in your home?

We believe that literacy learning begins at birth with infants learning to recognise and develop their own non-verbal literacy through movement and sound. For young

children in our centre, literacy encompasses everything we do here: storytelling, role playing, dress up, drawing, writing, physical development, balance, co-ordination, reading and most importantly conversation with others. These all help to develop strong literacy practices. The Early Childhood Curriculum *Te Whāriki* "promotes literacy learning through its principles, which seek to empower children to become literate through activities that are meaningful and engaging. It encourages a holistic view of literacy where infants, toddlers and young children engage with literacy in ways that reflect their growing expertise, and that incorporates their home literacy practices." <http://www.ero.govt.nz/publications/literacy-in-early-childhood-services-teaching-and-learning/introduction/>

We are looking forward to our new

renovations to the building and decking area. This will provide more space for children and teachers. We are still awaiting some quotes for work to be done before this can start.

There is a huge interest in Coro

Rocks, where children find painted rocks throughout the Coromandel area and then re-hide them for others to find. It is a great way to spend an afternoon, getting out and about in the community, searching high and low for the elusive painted rocks.

Since our last report we have celebrated birthdays for Cassidy, Delsjaia, Grace, and Ophelia and we wish them a very happy birthday. We said farewell to Cassidy and Delsjaia, who begin their learning journey at school.

We have spaces available in our under 2's area so if you have a child this age and are looking at preschool options come along for a visit. We are full on the over 2 years side but if you are looking for a quality early childhood centre, come along and see if this is the right place for you and your child to begin their lifelong journey of learning. You can put your child's name on the waiting list if required. Check out our latest Education review on the website: <http://www.ero.govt.nz/Early-Childhood-School-Reports/Early-Childhood-Reports/Coromandel-Community-Preschool-18-11-2013>

The centre operates Monday – Friday 8.30am-4pm. We are situated at 155 Pottery Lane. If you are interested call in for a visit or phone us on (07) 866 7570

Coromandel Youth Group – Hauraki House

For all children aged 5 – 15yrs.

Term One Opening Hours

Sunday: 1-4pm.

After School: Tuesday and Thursday 3-5pm, Friday 2.15-4pm. (If you would like us to collect your child for the Friday after-school session, please phone the Youth Rooms before 5pm Thursday.)

Friday Night Social: 6-9pm.

School holiday opening hours.

Opening times for both weeks are:

Monday, Tuesday, Wednesday, Thursday 11am-4pm

Friday Night Social* 6-9pm

Sunday, Easter Monday and Anzac Day 1-4pm.

Entry is \$2 for Monday to Thursday school holiday sessions.

For 5-year-olds and over there will be a variety of activities to choose from. All you need to do is fill in a membership form and send your child along with a packed lunch or money to purchase snacks, pies or hot chips. For holiday programmes or more information call in at the Youth Rooms or telephone us on (07) 866 7061.

*Friday night social is for students 11 to 14 years of age. All students must come inside and sign in upon arrival.

To help with running costs we would appreciate a gold coin donation for after-school sessions.

Parents are welcome to browse our fundraising table for Nu 2 U bargains.

For more information call in at the Youth Rooms, Hauraki House or phone (07) 866 7061.

This programme is made possible by donations received for our fundraising table, entry fees and grants from: Lottery Waikato, COGS, Trust Waikato, Coromandel Senior Settlement Trust & Coromandel Community Board. Thank You!



Excavators | Tip Trucks | Bobcats | Auger & Chain digger hire
Skip Bins | STMS Services | Septic Tank Services | Portaloo Hire

1020 Tiki Road, Coromandel
p. (07) 866 8308
e. jamesdrainage@xtra.co.nz



Luxury bush chalets

Private outdoor spas

Come find your paradise

Pizza and Darts Night 8th April 5pm

Cafe, Restaurant and Bar

April opening hours

Wednesday, Thursday, Sunday 10am-4pm

Friday & Saturday 10am-late

(Closed Mondays and Tuesdays)

Evening meals or group bookings by arrangement.

A picturesque 1 hour drive North
from Coromandel Town.

Ph 07 866 6614

www.kiwiretreat.co.nz

1299 Port Charles Road, Port Charles, Coromandel

Rangatahi

CELEBRATING OUR CHILDREN continued



Students and Kiwi Can Leader Gemma standing over the shark they all created

Kiwi Can

“Kia Ora Tatou Katoa.”

In our first few weeks back at our schools we have been meeting new students as well as some new teachers. Our tamariki have found out what their new formation lines are for this year. We have Earth (Papatuanuku), Saturn (Parearau), Venus (Kōpu) and Mars (Matawhero). Thank you to our Te Kawenga class from Thames South School for the Maori translation. Ask your child if they remember which formation line they are in and maybe together you can find out a new fun fact about their planet. Each class has now created their own chant about what their class stands for, so you can ask your child to tell you their chant and help them to practice. Together all the classes have created a treaty of guidelines and rules for our Kiwi Can room.

Students have now discovered what our Theme and Catchphrase is by searching the school for puzzle pieces. Our Theme is Positive Relationships and our Catchphrase is “Cooperation and Communication is the key, to build a friendship between you and me”.

Your child or children should have memorised this by now so ask them to give it a go at home and ask who they share a positive relationship with and what makes this a positive relationship.

Our Kiwi Can leaders had the pleasure of joining the Coromandel Area School primary students on their school camp at Tucks Bay; always a lot of fun to be had. Gemma and Jasmine loved the sound of excitement in the air as the children arrived off the bus, friendships forming between older students and young, and watching children find independence as they take some responsibility in activities. After a big day we finally get to sleep only to be awakened to the deafening sound of cicadas. Thank you for inviting the Kiwi Can team on your awesome camp.

Nga mihi nui from the Kiwi Can team Marlene, Gemma, Jasmine, Emma, and Natalie.

Want to help out Kiwi Can Coromandel..... Contact Marlene Johnson 027 223 2629 email: kiwican@cilt.org.nz

The Coromandel Kiwi Can programme is managed by the Coromandel Independent Living Trust, officially sponsored by Sanford Ltd and supported by The Lion Foundation, Thames Community Board and Driving Creek Railway Ltd, CSSC (Colville Social Service Collective), DV Bryant Trust.



Coromandel Area School

By Emma Blake

Term 1 is proving to be full of sports and activities to keep our tamāriki busy!

Junior camp

Junior camp has been a highlight of the term so far, with years 1-6 enjoying another action packed few days at Tucks Bay. There was kayaking, bush walks, plenty of swimming and fun beach activities including “The Big Dig”. What a wonderful sight it was to see a hundred happy students swimming in the sea. Many thanks to all of the wonderful parents and whanau who came along as helpers for the camp, it would be impossible without you! Also, a huge thank you to our teachers and staff that organised the camp. Many hours of planning went towards creating this wonderful experience.

We look forward to next year being just as enjoyable.

Athletics

The senior athletics was a successful day with Manaia senior students joining us for the day.

Athletics points will be put up on noticeboards around the school, so be sure to check it out to see where you and your whanau group are situated. Emily James is the current leading point scorer for both athletics and swimming sports. Well done Emily, huge effort!

Tough rugby

Huge congratulations to our girls’ touch team who have won both the Whitianga and the Coromandel open women’s touch modules for the 2016/2017 season. We are so proud of your achievement and commitment to training and playing. Thank you to Boydie for your support and training.

Fabulous effort and achievement to Georgia Teklenburg, Alex Sowerby, Shania Teklenburg, Emily James, Kylah Berghan, Kaiah Kerrison and Brooke Teklenburg (Captain).

Communication

We endeavour to communicate as effectively and efficiently as possible in regard to all school matters. Please ensure you read all newsletters, notes home and check the website regularly to keep up to date with any information you may need to know.

An exciting development in regard to communication is the establishment of our official Facebook page. The page is under development at the moment and should be live in the next couple of weeks. The name of the page is Coromandel Area School, so please “like” and “follow” us on the page to get instant and up to date information, photographs and updates on school achievements.

Expert writers in Room 2

Room 2 students have been working hard alongside Ms McGregor to develop their writing and storytelling abilities. Part of this process has been to ensure the children are enjoying themselves while they learn. A particular example of this was when it was decided to give the classic “Incy Wincy Spider” poem a re-vamp. How hilarious it was to come up with variations that could only come alive in our imaginations! Here are some examples of the fabulous poems:

Nuriya Kirsch: “Incy, Iggy sheep climbed up the water spout, down came the snow and froze the sheep out, out came the sun and melted all the snow, so sheep shook all of it off.”

Jayden Waara: “Incy Wincy lizard climbed up the mountain and the snow came down. He got covered up with snow, the sun came up and dried up all the snow and Incy Wincy lizard climbed up the mountain again.”

ANZAC 2017

We are looking forward to the ceremony this year. Chamya Raddick will read “In Flanders Fields” and another senior student will read an NZ-themed war poem. We are looking forward to good representation from our community for the ceremony.

Solar powered school?

Solar meeting at CAS 11 April 5-7pm. Nibbles and refreshments provided All welcome.

COROMANDEL
AREA SCHOOL



CAS athletics day

Te Rerenga School Learning, it's what we do...

By Anna Yates

The last few weeks have seen a few visitors through school helping us to deliver exciting and interesting classroom programmes. Shane and Leanne visited as part of the Firewise programme with all of our children learning about how to stay safe around fire. We also had the LIFE education bus visit so we could learn all about healthy body systems and ways in which we can stay healthy and safe. Briar from Project Energise also worked with our year 8 children to develop their leadership skills in providing playground activities as part of the PAL programme.



Our year 4-8 children participated in the Country Schools Swim Sports with Whenuakite and Coroglen schools last month. We have Jac Forsyth, Marco Baylis, Ella Edkins and Rico Simpson progressing to Thames Valley for further competition due to their excellent results. We wish them every success as they race down that pool for our cluster team next week. We were really proud of the efforts of all of our children, particularly those that stepped outside their comfort zone to swim in length races.

This term all of our classes are learning about journeys and our teachers are finding connections across the curriculum that are challenging, interesting and engaging our children in this concept. Room 1 are taking a food journey through Europe and are currently preparing dishes from France each Friday. They are learning all about the different countries through the term. Room 2 are investigating migration and will be travelling to Kaiaua later this term for an overnight trip to learn all about the



Danyl and Theo underway with artworks depicting the giant weke being chased by Kupe all the way to Aotearoa

godwits at the shorebird centre. In Room 3 the children have been exploring the journeys their families have made and why people explore and venture out on journeys. In Room 4 children are exploring different parts of the Te Araroa trail, following the journey of our former student, Atawhai Charteris and also seeing what each region has that is unique and special. They have also been learning about Kupe and his journey to NZ so many years ago.



Our Room 1 children during their Firewise visit

COROMANDEL & AUCKLAND FERRY

TIMETABLE EFFECTIVE TO 4 JUNE 2017



Departs Auckland: Pier 4, Quay Street

	M	T	W	T	F	S	S
13 Feb - 9 Apr	-	8.45am	-	8.45 am	6.40 pm	8.45 am	8.45 am
10 Apr - 16 Apr	-	8.45am	-	8.45 am	8.45 am	8.45 am	8.45 am
17 Apr - 23 Apr	8.45 am	8.45am	-	8.45 am	6.40 pm	8.45 am	8.45 am
24 Apr - 30 Apr	-	8.45am	-	8.45 am	6.40 pm	8.45 am	8.45 am
1 May - 4 Jun	-	-	-	-	-	8.45 am	8.45 am

Departs Orapiu to Coromandel: (approximate times)

	M	T	W	T	F	S	S
13 Feb - 9 Apr	-	9.50 am	-	9.50 am	7.45 pm	9.50 am	9.50 am
10 Apr - 16 Apr	-	9.50 am	-	9.50 am	9.50 am	9.50 am	9.50 am
17 Apr - 23 Apr	9.50 am	9.50 am	-	9.50 am	7.45 pm	9.50 am	9.50 am
24 Apr - 30 Apr	-	9.50 am	-	9.50 am	7.45 pm	9.50 am	9.50 am
1 May - 4 Jun	-	-	-	-	-	9.50 am	9.50 am

Departs Coromandel: Hannafords Wharf

	M	T	W	T	F	S	S
13 Feb - 9 Apr	-	3.00 pm	-	3.00 pm	8.45 pm	4.30 pm	4.30 pm
10 Apr - 16 Apr	-	3.00 pm	-	3.00 pm	4.30 pm	4.30 pm	4.30 pm
17 Apr - 23 Apr	4.30 pm	3.00 pm	-	3.00 pm	8.45 pm	4.30 pm	4.30 pm
24 Apr - 30 Apr	-	3.00 pm	-	3.00 pm	8.45 pm	4.30 pm	4.30 pm
1 May - 4 Jun	-	-	-	-	-	4.30 pm	4.30 pm

Auckland - Coromandel

	ADULT	CHILD	FAMILY
ONE WAY	\$55.00	\$35.00	\$145.00
OPEN RETURN	\$90.00	\$55.00	\$235.00

Waiheke Island (Orapiu) - Coromandel

	ADULT	CHILD	FAMILY
ONE WAY	\$35.00	\$22.00	\$92.00
OPEN RETURN	\$60.00	\$35.00	\$155.00

Child definition is 5-15 years inclusive.
Family definition is 2 adults + 2 children.

Please note:

A Sunday service operates on public holidays, except Christmas day.

In the event of cancellations 360 Discovery may arrange alternative transport arrangements.

A ferry bus shuttle will transfer you to and from Coromandel Town (Samuel James Reserve car park) and Hannaford's Wharf. There is no additional fare for this service.

Timetables and fares are correct at time of printing. 360 Discovery reserves the right to change fares and departures without notice. Full terms and conditions of travel are available online.

Arts

Thirty Years of the Coromandel Group Easter Exhibition 1987-2017

The beginnings of this Easter Group Exhibition started on a car journey from Wellington to Auckland in 1986 when Jenny Shearer, Wailin and Tom Elliott were driving back home to Coromandel after having an exhibition in Wellington. The fact that there was no suitable gallery space did not deter them from deciding to hold an exhibition of their work in Coromandel.

The first exhibition took place in the Council Chambers on Kapanga Road at Easter 1987. The participants were Dr Deirdre Airey (terracotta tiles), potter Barry Brickell, woodcarver Tom Elliott, and potters Wailin Elliott, Mark Lorimer, David Shearer, Jenny Shearer, Paul Tobin and Jan White. Unfortunately four of those original nine have sadly passed away and only Jenny Shearer, Wailin and Tom Elliott are still exhibiting in 2017, where they are joined by long-term exhibitors Maureen Allison from Whangamata, Paul Maseyk from New Plymouth, Mike O'Donnell from Paeroa and Janet Smith from Cambridge.

By kind agreement with the Thames Coromandel District Council their first three exhibitions were held in the Council Chambers. Once the old Coromandel School in Kapanga Road was turned into an art gallery and theatre and renamed Hauraki House, the Coromandel Easter Exhibitions have been held here.

The opening of this thirtieth exhibition will take place on **Good Friday 14 April** at 1pm. All welcome.

Coromandel Players

By Don Hughes

Good news regarding our next production.

I had been reluctant about mentioning it last month and thus putting the "Greek Curse" upon it. But, with a complete cast and rehearsals underway, I feel a bit more confident writing about it now.

The play, "Spreading Out", is by one of New Zealand's favourite playwrights, Roger Hall. The characters of his play, "Middle Age Spread", written thirty years ago, are revisited in their seventies, with their children now parents themselves. All of the pleasures and problems that these years and that mix of relationships can produce are laid out for us with Roger's trademark humour and frankness. This is the fifth Roger Hall play we have presented and, as with the previous four, he just doesn't miss.

We have three newcomers to the Players on stage for this play and a welcome back for someone absent for a few years. If you want the details.....aha....read the May issue reminder about the dates! The performances are planned for **Friday 12 May** evening, **Saturday 13 May** matinee and **Thursday 18, Friday 19, Saturday 20 May** evenings.

Pottery Seconds

Come to a big pottery seconds sale at Puketai Pottery and Sculpture Gardens, Petra Meyboden, 800 Driving Creek Road, Coromandel on **Saturday 15 and Sunday 16 April** 10am-5pm.

Pastel Artists Coromandel

By Christine Lunn

After our extended summer break, Pastel Artists Coromandel group are now back into their regular Tuesday meetings. The weather over the past week has been ideal for staying indoors and getting pastel onto paper.

We are all looking forward to what is expected to be a very exciting 2017 with the PANZ annual conference in March and our annual exhibition in October.

Plans for our workshop lead by one of New Zealand's leading pastel artists taking place later in the year are still in the planning stage.

We look forward to welcoming any interested local or visiting artists (or beginners) to our club days. Morning tea and bikkies at 10am.

Pastel Artists of Coromandel meet Tuesday mornings 9am-12pm at the Coromandel Aero Club rooms on Tiki Road.

Initial contact with Allan Beaver (07) 866 8053 or Christine Lunn on (07) 866 7220

Coromandel Easter Exhibition

14 April to 24 April 2017

30th
exhibition by the
Coromandel Easter Group
1987-2017



*opening Friday
14 April at 1pm*

Maureen Allison • Tom Elliott • Wailin Elliott • Paul Maseyk
• Mike O'Donnell • Janet Smith • Jenny Shearer
including works by past members and guest exhibitors

Hauraki House Gallery • Kapanga Road, Coromandel • open 10am-5pm



**Coromandel
QUARRY &
Contracting Ltd**

- All grades of metal delivered
- Driveways, roading, earthworks
- Please call for a FREE quote

Telephone 07 866 8306

email: richard@cqc.co.nz www.cqc.co.nz

Coromandel Art Group

By Lindsay Nicholls

We have had a couple of days out painting but weather wise its not been good to us on a Thursday.

We went to the waterfall on the 309 Road recently for a change and it was the most spectacular day for it. We sat in the sun on rocks while sketching and painting. Those that saw fit clambered down to the water while others stayed up the top to get a view which was just as nice.

We still hope to stay outside for a few more weeks.

We are also thinking about our tutors for the year and getting that organised as well as our new group project. It takes us a good six months to get one organised from the initial idea to the final presentation.

With all this rain we notice the amazing greens that appear after the extreme heats we have had. Nature sure knows how to change those colours, but instead of paint she uses water and sun.



Shirley enjoying the waterfall setting

Colville Easter Festival

Come rain or shine – all events in the hall this time. Three nights of shows.

Friday 14 April 8.30pm – Colville sings Leonard Cohen \$10. 18 people will sing a Cohen song from first album to last.

Saturday 15 April 5pm – Music Night \$20

Five wonderful acts for you, from solo act through to full band + DJ Benjamin: Dave Khan, Larz Randa, Brian Shone, The Trees and Ha the Unclear.

Sunday 16 April 6pm – Variety / Cabaret Show \$20. Vaudeville-style Comedy, Jennifer Darling – Cabaret, Flamenco Dancer, Celtic Heirs – Irish Folk, Colville School Troupe.

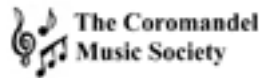
Tickets available at the Colville Store.

Sculptures will be scattered around the town.

Workshops to attend: Introduction to earth building, archery (booked out), leather workshop, play with clay and into ACTION (drama for all). To register please call CSSC (07) 866 6920 or 027 487 5131.

Coromandel Music Society

By John Gaffikin-Cowan



The Music Society held its AGM on 10 March and has a new committee. Robin Münch has retired from the committee, John Gaffikin-Cowan has taken on the role of President while Maureen Kimber continues to act as secretary/treasurer. Dianne Burton and Matt Sephton are returning to the committee and there are now two new members, Dr Philip Sallis and Ashley Franklyn.

It is over two months since we held our summer concert at the Mussel Kitchen and the committee would like to thank Jake Bartrom for the outstanding support he provides for this event. Not only do his staff make an amazing effort to ensure that everything runs smoothly, but Jake generously offers financial sponsorship as well. Thanks Jake.

Watch this space for details of two exciting concerts coming up in May – “My Name is Moana” with the NZ icon Moana Maniapoto (**Thursday 4 May**) and guitar virtuosos Loren Barrigar and Mark Mazengarb (**Thursday 18 May**) who are currently performing in the United States.



Below document was published by Animal Control Products (Govt. owned) now called Orillion NZ

1080 Reassessment Application

October 2006

Section 3.1 & 3.2 Identification and Properties of Substance

A. Technical Grade Active

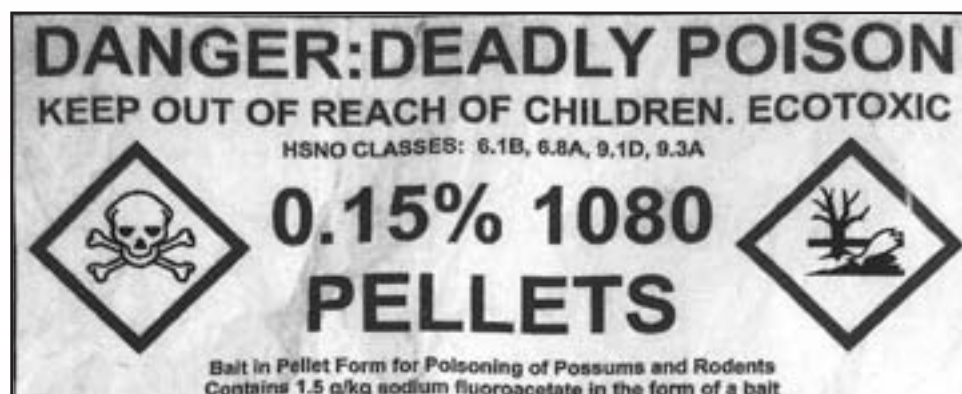
Sodium fluoroacetate is a sodium salt of fluoroacetic acid. Technical grade 1080, which is more than 90% pure, is manufactured by Tull Chemical Co. Inc. in Alabama in the USA. Tull is the only US manufacturer. Technical grade 1080 is imported into New Zealand as a powder in 10 kg polyethylene pails (typically 500 kg shipments), for formulation into baits.

3.1 Unequivocal identification

Chemical name	Sodium monofluoroacetate
Common name	Sodium fluoroacetate
Synonyms	1080, compound 1080
Trade names	None known
CAS registry number	62-74-8
UN number	2629
Proper shipping name and classification for transport	Sodium fluoroacetate Class 6.1 PG I Hazchem code 2X
HSNO Approval Number	HSR002771
Molecular formula	F-CH ₂ -C-O ₂ -Na
Molecular weight	100.03
Composition (% w/w)	Technical grade purity (manufacturer's data):
Active ingredient	Sodium monofluoroacetate 90% (w/w) min.*
Significant impurities	Potassium fluoride 1% max. Ethyl chloroacetate 1% max. Sodium hydroxide 0.5% max. Methanol 0.5% max. Water 6.9% max. *Assays by ACP show purity of imported product to be in the range 95 – 98.5%.

3.2 Chemical and physical properties

Appearance	White powder – like "damp sand" Odourless and almost tasteless
PH	Approx. 6.5 for 20% solution
Bulk density	Not known
Vapour pressure	Non-volatile, non-flammable
Melting point / thermal stability	Becomes unstable at 110°C and decomposes at 200°C. Main decomposition products include: Carbon monoxide, carbon dioxide, formaldehyde, silicon tetrafluoride, and fluoroacetyl fluoride.
Solubility	Very hygroscopic Very soluble in water (110g per 100 ml at 25°C) Practically insoluble in all non-polar solvents
Stability	Stable in sunlight at 54°C
NZ Workplace exposure standard (WES)	TWA 0.05 mg/m ³



For more information email Diana Halstead dianahalstead@hotmail.com

Environmental

Moehau Environment Group

By Natalie Collicott

What to do with injured wildlife

From time to time we get calls from members of the public who have seen an injured bird. We usually put them in touch with Kuaotunu Bird Rescue Centre, a small home-based clinic that takes care of injured birds. They will take in any injured bird, regardless of breed.

Licensed by DOC, they service a large area from Port Jackson to Tairua. The group is run by volunteers and often struggles to keep up with the high demand. Operating out of her home, Annemieke Kregting regularly gets up to 10 calls a week about injured wildlife. As word has spread about this service, demand has only increased.

Annemieke wants to make the public aware that she does not have the capacity to pick up wildlife unless it's within Kuaotunu area. It is up to the public to catch the bird and bring it to her in Kuaotunu. If you are unable to arrange transport, there are volunteers available to act as a wildlife ambulance service.

Injured Birds – what to do

- Do not endanger yourself or the bird
- Take care when handling large birds – watch for beaks and claws
- Don't "bird-nap" – make sure that the bird really needs help. If in doubt, call Annemieke.

Rescue a bird if:

- It has blood on it or an open wound.
- It has a broken bone.
- It cannot stand on its own.
- One of its legs is hanging uselessly.
- It cannot fly (but it is not a nestling or fledgling being coached by nearby parents).
- Its beak is damaged.
- It has oil on its feathers.
- It is caught in a trap, fishing line, or string.
- It has been caught by a cat even if it seems fine.
- It is unconscious or having difficulty breathing.

Bird rescue method

Once you have decided there is a need to rescue the bird, do so quickly and quietly. Throw a towel or lightweight blanket over the bird. Place the bird in a box and cover the top. The darkness

will calm it. Keep it warm. Fill a hot water bottle with warm water, wrap it in a towel, and place it under the bird.

Is the bird native and endangered? Report it to the Department of Conservation emergency hotline 0800 362 468. Otherwise contact Kuaotunu Bird Rescue on (07) 869 5695 or 027 600 6959. If you require assistance with transport phone Neville Cameron on 027 494 1181 or Carol Sutherland on 027 486 4043.

Moehau Environment Group is a non-profit volunteer organisation dedicated to the protection and enhancement of the natural environment of the northern Coromandel. For more info or to get involved please get in touch with Natalie Collicott, MEG Coordinator (07) 866 5337. Email: natalie@meg.org.nz or go to www.meg.org.nz



Bush Bites

You've all heard of "sound bites", now our MEG trappers want to share some "bush bites"-inspiring encounters with nature they've had while out in the bush.

"Protecting the native bush is for all ages. Our youngest permanent volunteer is 17 and the oldest is 83."

"Today I had a flock of 15 fantails flying around while changing bait on one of the rat traps."

"Cicadas everywhere! The forest is moving with them."

Waikato Regional Council's Coromandel Catchment Committee

By Reihana Robinson, landowner representative on the committee

Water quality

A good public turnout on 6 March of the WRC Coromandel Catchment Committee in Whitianga resulted from the decision, at the request of your representative, to start holding meetings around the Peninsula where interested locals can attend without undue cost and inconvenience. The next meeting will be in Whangamata and I have requested the final meeting of the year to be held in Coromandel. We will see if staff will organize this.

At the public forum, water quality degradation and pollution of peninsula streams and river-mouths and popular recreational swimming spots drew significant discussion.

Just like elsewhere in New Zealand, hardcore pollution of swimming spots with enterococci, faecal coliform and e coli has become a major threat to public health and our tourist economy. Bacterial pollution means infection, water-borne illness and disease.

A study by WRC in January and February 2015 found numerous samples exceeding bacterial guidelines but results were not released until a year and half later. At the meeting it was agreed that this summer's results would be provided in May this year which is a great step forward for public health on the Coromandel.

WRC staff reported at the meeting that they were following up with a study this summer... a full two years later and apparently at only four locations instead of the 18 previously sampled. Fortunately the west coast stream health is better than the east coast.

WRC does not have a swimability standard for e coli, unlike virtually the rest of the civilised world. Your representative has requested immediate release of all current sample data and a staff report on "swimability" guidelines to be adopted for acceptable e coli and faecal coliform levels at recreational locations and a programme to warn the public when bacteria spikes.

WRC ceased monitoring water in 2009. Given the current concerns with water quality throughout the country and given the fact that Gravitas surveys by WRC of ratepayers posits water as the number one issue in the Waikato, it is timely to restart full and regular monitoring with warnings and closures where warranted. If not, our tourist-based economy, let alone our own families' health, are at grave risk. Our mokopuna should be able to swim in our streams without getting sick or catching diseases.

New grants

It is pleasing to see the increase in successful grants to individual landowners. After pushing for expansion of grants to include traps and not just poison, and to go to individual landowners and not just groups, as has been regional council previous policy, it is pleasing to see a number of successful grants to local residents for predator control. A new round of grant applications has opened on March 1. The only extra obligation is to publicly thank WRC in the newspaper. However WRC has bought an Australian web programme called Smartgrants that will make it impossible for landowners without computer access to apply. The programme is sufficiently complex that WRC will be organising meetings to assist with application filing. Don't forget to call 0800 800 401 for assistance.

Steelcraft Ltd

Precision and general engineering

Steve Norris
Paul Baylis
75 Wharf Rd
Coromandel
Phn/Fax 866 7710



Sport

Coromandel Golf Club

By Peter Gray



The Coromandel Ladies hosted the first round of the Thames Valley Pennants on Monday 6 March. The Coromandel Team did not disappoint the local gallery, easily winning the Zone 2 Pennant. The team of Glenise Robertson, Marilyn McKenzie, Gina Carr, Jenny Gilmore, Greta James and Philippa Medlock are looking forward to the next round at Thames on Monday 20 March. The Coromandel Course was in immaculate condition for the event and met praise from the visiting competitors.

The Men's Strokeplay Championship was played on Saturday 18 February. Mark Burcombe took out the Senior Division (Verner Family Trophy), Ron Evans has made a habit of winning the Intermediate (Dudson Family Trophy), while Paul Kasper won the Junior (O'Keefe Family Trophy).

Paul Kasper may need to build a new trophy cabinet adding the India Tyre Trophy, played over 27 holes on Saturday 25 February (adding to his strokeplay win).

The Men's representative season has also commenced with the first round of the Prebble Cup played at Thames on Sunday 19 February. The Coromandel Team had a first up win but wish to acknowledge the sportsmanship displayed by the Pauanui team after a health incident left the Coromandel team unable to complete two games. The team was not able to repeat the win in round two coming away with a loss.

The first round of the Laurie Olliff Trophy/Meat Pack had Tom Folwell and Don Bryant (44pts) fighting over the big BBQ tray with Peter Richardson's 42 earning the pork chops.

The Men are currently playing the Hekter Cup (Best 2 of 3 rounds net). Jim Davis with a 1st round 62 has bolted out of the stalls from Chris Fielding 66. The 2nd round will need to be re-scheduled after the wild and wet weekend of 11 March.

Reminder

Wednesday 26 April – Meat Pack/Laurie Olliff Trophy.

Saturday 29 April – King Trophy (P)



The Coromandel Ladies' Winning Team - Thames Valley Zone 2 Pennants - names in report

Coromandel Area School Sport

By Geoff Horton, Sports Coordinator

It has been flat out with Coromandel Area School sport this term. The annual swimming and athletics events, community meeting and the girls' touch competitions have kept everyone involved and busy. Year 7-13 students from Coromandel and Colville competed in swim events at the community pool,

with the day culminating with the whanau relays. Eight-person whanau teams were put together so every student had a chance to compete for their whanau group relays and select a team for the final 8 x 25 metre relay. Hauraki reigned supreme and took home the gold for that race and the 4 x 25m flying four relay to finish the day top of the whanau pool.

A week later the senior school athletic meet took place, joining forces with Manaia to engage in a fun-filled, competitive sports day of track and field events, with Manaia pretty much dominating the field events and Coromandel the track races. After the sprint races, the end of the day featured the whanau and inter-school 4 x 100 metre relay events. The rivalry created elevated excitement and athlete support. Hauraki again took line honours to make it two in a row in the whanau relay, with Manaia in a close second.

The inter-school relays featured a boys' and girls' 4 x 100 metre relay between both school and, as anticipated, the racing was close and exciting with Coromandel Area School narrow victors to take home the medals. It was a great day of fellowship between the two schools with students enjoying the competition and camaraderie that comes with the challenges of school track and field events.

A big thanks to Boydie for his technical expertise as coach and to all the parents who supported the girls all season. A couple of weeks' break and then the netball squad will come together for the 2017 season with a new coach. A group of girls will be heading to Te Awamutu for the NZ Area Schools North Island coaching clinic and trials, aiming for selection in the North Island Area Schools netball squad early April.

Lastly, thanks for the feedback regarding the recent community sports meeting. I will be touching base with Justine at Sport Waikato for when the follow-up gathering will occur.

Geoff Horton 021 054 1193



Coromandel Area School Girls Touch Team: Back: Boydie (coach) Georgina Teklenburg, Alex Sowerby, Shania Teklenburg, Emily James, Geoff Horton. Front: Kyla Berghan and Brooke Teklenburg (Captain) Absent: Kaiha Kerrison

Coromandel Croquet Club

While the days are warm we start croquet at 9.30am. This will continue into April, we hope!

If you would like to join us, we'll give you six free sessions with plenty of tuition before you commit to joining, and after that we'll continue to coach you in the finer points of the game.

Phone Kaye for more information on (07) 866 8968, or just come along on a Tuesday or Saturday at 9.15am for a 9.30am start. The Croquet Club is in Woollams Avenue next to the Bowling Club.

Spirit of Coromandel Trust

By Rita Stephenson

Saturday 13 May sees our biggest local fundraiser, when profits go the planting of kauri trees throughout our region. Your support is necessary and welcome and this year we are re-introducing the Family Fun Run to the mix. The 5km Fun Run starts at 11.30am from the Patukirikiri Reserve with the finishing line at the Coromandel Area School. The fun run course is flat, suitable for littlies, bikes, prams, etc., as well as feet! So do join in and make this a town event. The 32km run starts at Waikawau at 10.30am, the 23km run starts at White Star in Colville at 10am and for the less hardy the 13km and 5km run start at Patukirikiri reserve at 11.30am. All runs finish at the Coromandel Area School so show your support by cheering the competitors in at the finish.



COROMANDEL.N.Z

866 8635

See meeting list for class times

Coromandel Recreational Fishing Club

By Allison Brown & Committee CRFC

We had a wonderful day for the Classy Chicks Competition on 25 February. I'm sure everyone taking part enjoyed themselves. We certainly did. It was a day out of the box – lovely and fine and great out on the water. Very glad we chose that date to have the competition – as I write this the weather has been terrible lately.

Our commiserations go to the lady who had a fall just before the prize giving began and had to wait for the ambulance. We hope you are feeling much better now.

Results For Classy Chicks Competition

Heaviest Snapper: 1st Christy Benton 6.305kg; 2nd Carol Leeney 5.365kg; 3rd Nikki Stephenson 4.360kg. Heaviest Kingfish: Janice Simpson landing a 6.679kg. Heaviest Trevally: Gayle Berghan bringing in a 1.559kg. Heaviest Kahawai: Jan-Maree Franicevic with a 2.402kg. Mystery Weight Snapper: was won by Briar O'Keefe with a 3.116kg. Major prize – a travel voucher worth \$1,500 for the average weight was won by Louella Axon – weight being 1.286kg

Our MC for the evening, Jan-Maree Franicevic, who won the prize for the heaviest kahawai, put her prize up for auction, raising \$160 for the Club which was much appreciated.

Dress up Teams – Theme starting with “W”

1st Walking Windows, 2nd Wahinedisasters, 3rd Wobbly Workout Women. I'm only glad that I did not have to judge them as they were all winners. Absolutely great costumes by all entrants really made the day a great success and fun.

There were three prizes drawn for the skippers.

Big thank you to: Jan-Maree Franicevic who was the MC for the prize giving, keeping everyone in fits of laughter; Fletcher Brown, Chase Hannah and Aaron Roach were her runners taking spot prizes to all the ladies, wondered what they had struck but in the end I think they were having as much fun as everyone (at the beginning I got a foul look from my grandson Fletcher with the comment “you'll keep Nana”; Chris Doe and Nikki Stephenson for all of their time and effort in organizing the prizes and spot prizes; all the wonderful sponsors who so generously gave us prizes.

Onto our next competition “Take a Kid Fishing” will be on **23 April** which is the middle of the school holidays (weather permitting). Last year it was raining but the harbour was quite calm – the kids had a ball, all caught plenty of fish and good sizes. So fingers crossed that this year will be a good one too.

Entry forms will be available from Wyuna Studios and Fish and Dive from the beginning of April.

February Fish of the Month for Club Members was kingfish, won by Troy Evans with the weight of 5.755kg. Nikki Stephenson actually beat his kingfish with one weighing 6.030kg weighed in at the Classy Chicks and she forgot to put it in for the heaviest fish for Club Members for February. Moral of story: don't forget to weigh in your Fish of the Month.

Fish of the Month for March is kahawai. Weigh-in stations remain the same at: Max and Val Larsen phone (07) 866 7656, Fish & Dive phone (07) 866 8797. Also don't forget to weigh in any good fish for the end of the year pins and trophies.



Dress up Teams at Classy Chicks Competition

Coromandel Recreational Fishing Club CLASSY CHICKS Ladies Fishing Competition

**A GREAT DAY WAS HAD BY ALL.
THANKS TO THE WONDERFUL PRIZES
SO GENEROUSLY DONATED.
THANK YOU ALL SO MUCH.**

MAJOR SPONSORS 2017:

COROMANDEL FISHING CHARTERS	CORO SNAPPER SAFARIS
WILLIAMS LANDSCAPING	BERLEY UP PRODUCTS
UMU CAFÉ	ITM
ANCHOR LODGE	EVOLUTION TATTOO STUDIOS
COROMANDEL HOLIDAY PARK	WAYNE BROOKS EXCAVATORS
	COROMANDEL BOAT HIRE

AND TO ALL OUR OTHER CONSISTENT SPONSORS – THANK YOU:

NEW IMAGE HAIR SALON	COROMANDEL PIES
PEPPER TREE RESTAURANT	COROMANDEL MUSSEL KITCHEN
ABBY COURT MOTEL	WETA DESIGN
BLACK MAGIC	COROMANDEL MEATKEEPERS
NAILED @ SHEPS PLACE	WYUNA STUDIO
CORO OYSTER COMPANY	HARBOUR VIEW MOTEL
CORO BAKEHOUSE	DRIVING CREEK RAILWAY
TOP TOWN TAKEAWAYS	BP SERVICE STATION
DAVIES DIGGERS	JAMES & TURNER
CONAGHANS	LIQUOR KING
AVON	CORO KEBAB HOUSE
CORO FOUR SQUARE	COASTWAY CUTTERS
TIDEWATER MOTEL	RICHARDSONS REAL ESTATE
COROMANDEL TAKEAWAYS	UNICHEM COROMANDEL PHARMACY
SUCCESS CAFÉ	CORO GARDEN CENTRE
COROMANDEL FISH & DIVE	SALTY TOWERS
MOON	ADMIRALS ARMS
BNZ BANK	COASTGUARD
CORO CAFÉ	FISH'N'TITS
CONOR JANE	COROMANDEL MARINE ENGINEERING
MORRISSEY MOTORS	MOBIL MERCER & HUNTLY
BEADY EYES	
THE WATERWORKS	
CORO GYM	
COROMANDEL LIQUOR	
REX BROWN DRILLING	

Classifieds

Classifieds cost 30 cents per word – please email your words to corochronicle@gmail.com and I will give you my bank details to direct credit. Or call Debbie on 021 235 6648.

PROFESSIONALS

ALL ASPECTS OF TREE WORK done professionally. Coromandel based Dynamic Tree Care. Call today 027 451 2224 or (07) 866 8177.

ARE YOU THINKING of having those needed jobs done? Whether it be Carpentry, Decorating, Tiling, I can give you advice and a free quote. Call Vaughan on (07) 866 7969.

AUTUMN IS COMING: Jobs to be done! Phone Vaughan Udall for a free quote (07) 866 7969.

BEGINNER YOGA WITH BECKS, NEW LOCATION! Tuesdays at the Anglican Church Hall, 170 Tiki Rd, from 5.30pm to 6.45pm, \$10. All are welcome and equipment is provided. Phone 027 407 0079 for more information.

BROKEN GLASS? Call Mike Coromandel Glass (07) 866 8869.

CABINETMAKER specialising in high quality kitchen design and build. Full workshop set up available here in Coromandel now. For a quote or ideas please call Stefan on 027 759 4887 or (07) 866 7787.

CAROLYN'S CLOTHING AND HABERDASHERY: For all your alterations and repairs. Ph (07) 866 7865

CARPENTRY: Windows, Doors, Decks, Kitchens. Sound Tradesman. Free Quotes. Vaughan Udall (07) 866 7969.

CLEAN UP - CLEAR OUT, Give GO GIRLS a shout! Cleaning, gardening, lawns & weed eating, give our skills a test let GO GIRLS do the rest. Phone Lizzie (07) 866 8810/021 148 5261.

COMPUTER FIX. Your local support and expert for computer repairs, upgrades, backup solutions, virus removal, software problems, purchase advice or tuition. Micha Wellnitz, Ph (07) 866 8932.

COMPUTER SOLUTIONS. Microsoft Certified Systems Engineer with over 15 years of IT experience providing solutions and support service for PCs, Laptops, Printers, Wired and Wireless Networks, Virus and Spyware removal, Data Protection and Recovery. Up gradations, Consulting, Design and Training. Contact: Dheeraj Bali Ph (07) 866 7550 Mob 021 207 1341 E-mail: dbali@vodafone.co.nz

COROMANDEL CATTERY & KENNELS (07) 866 8117, 027 433 1665.

COROMANDEL PICTURE FRAMER 30 years experience in all aspects of framing with an excellent eye for colour & detail. Please call me for an obligation free consultation. Servicing the Coromandel Peninsula. Ph Michelle 021 132 2890.

DIRTY WINDOWS? We'll clean them.

Single storey domestic or business properties. Local Coromandel area. Call for a free quote Benjamin Rudolph 022 101 7877

DYNAMIC TREE CARE professional arborists. Fully Qualified, Equipped & Insured. Health & Safety compliant. Call 027 451 2224 or (07) 866 8177.

GROUP COACHING CIRCLE FOR WOMEN is starting in April. If you want to be part of this thriving experience send me a line. For more info visit my website at lifeflowcoaching.co.nz/news Nalan Kirsch 021 515 707 info@lifeflowcoaching.co.nz

HIRE EQUIPMENT AVAILABLE at Rob's Small Motor Repairs: log splitter, ride-on mower, push mower, large weedeater, rotary hoe, waterblaster. Call Rob's Small Motor Repairs (07) 866 7865.

HOME AND BUILDING MAINTENANCE. Qualified Joiner. Contact Tony Burton 021 337 484.

LAWNMOWER SERVICE AND REPAIRS: And all the parts for your DIY's. Wanting to change your car oil? We now have oil and filters. Call Rob's Small Motor Repairs (07) 866 7865

PAINTING AND WALLPAPERING: Neat tidy work. Free Quotes. Vaughan Udall (07) 866 7969.

PENINSULA MIDWIVES. Experienced Midwives Available. Fiona Kington 021 743 717 or (07) 866 0413, Jocelyn Yates 027 912 4104. Free pregnancy tests.

PIG HUNTERS. I can bone and roll your pork or mutton. Plain or seasoned \$30. Ph 021 0261 7945.

RANCH SLIDER WON'T SLIDE? Call Mike Coromandel Glass (07) 866 8869.

SEWING & MENDING SERVICES, Lynda at Little Stella Design (blue house next to Museum). I also make design cushions, soft home furnishings made to order, and I do cushion & squab recovering, curtain alterations etc. Telephone (07) 866 7855 & 027 227 5077.

STUMP GRINDING. Call James 021 0223 7742. No stump too big, satisfaction guaranteed.

STUMPGRINDING - Machine assisted stump removal, all sizes all areas. Ph 027 472 6627.

THE LIGHTHOUSE STUDIO: Joinery/custom woodworking, furniture, Persian rugs and LOCAL ART. Between Coro Pies and Morrissey Automotive, down the green lane. 75 Wharf Rd 021 038 0923.

THE UNTYPIST will hand pen letters, design posters, cards and invites for any occasion. Call Benjamin 022 101 7877.

TILING: Wall and floor tile laying service. High standard of work. Free quotes. Vaughan Udall (07) 866 7969.

WINDOW CATCH BROKEN? Call Mike Coromandel Glass (07) 866 8869.

FOR SALE

JIGSAW PUZZLES 1000 pieces \$5 each (07) 866 7522.

LARGE GAS HEATER with gas bottle \$50, large outdoor wooden table with 3 white chairs \$50. Ph (07) 866 8593.

NOW SELLING NATURAL INTERIOR AND EXTERIOR OIL for wood. Made in NZ by the Natural-house Company. Excellent product, easy to use. Available from The Lighthouse Studio, 75 Wharf Rd ph 021 038 0923.

YURT 5M, unused, brand new, from Mongolia \$15,500 ph 021 298 9907.

SITUATIONS VACANT

A BIBLIOPHILE REQUIRED to research books. Work from home online. Ph 021 209 4653.

WANTED

WANTED ALL LIVESTOCK.

We inspect in the paddock. Also we transport every Thursday to Waikato's largest saleyards in Morrinsville. Phone Dave Coatsworth 0274 817 100.

HOUSE WANTED TO RENT IN COROMANDEL TOWN prefer near school for a nice clean Scottish family of 4. Short term approx from 30 October to 1 Jan. Please phone or TX Jeni 021 022 7534.

CASH PAID for your unused or unwanted chainsaws. Call in and see Rob at Robs Small Motor Repairs or phone 021 618 601.

WORK WANTED

"FOR TREES" PETER NOVIS, climbing specialist, felling, topping, pruning, chipping and wood splitting. Fully insured. Phone (07) 866 7128, 027 636 3253.

STUMPGRINDING - Machine assisted stump removal, all sizes all areas. Ph 027 472 6627.

TREE SERVICE. Dismantling or pruning. Free quotes. Call Jeremy Haszard 027 421 0603.

OTHER

MINI EXHIBITION Richard Chrisp 5-15 April at Driving Creek Café.

Advertisers' directory

Company	page
360 Discovery Ltd	29
A Taste of Matarangi	5
Admirals Arms	2
Ann Kerr-Bell – Natural Medical Centre	23
CILT – career navigator	7
Coastal Small Engine Services	2
Colville Festival	31
Coro Gym	34
Coromandel "Bizarre" Charitable Trust	25
Coromandel Accommodation	19
Coromandel Construction	16
Coromandel Easter Exhibition	30
Coromandel Garage Ltd	14
Coromandel Liquor	22
Coromandel Marine Engineering	6
Coromandel Marine Farmers' Association	17
Coromandel Plumbing (1986) Ltd	24
Coromandel Quarry Ltd	30
Coromandel Recreational Fishing Club	35
Coromandel Refrigeration	40
Coromandel Storage Ltd	4
Dan's Garage	11
Diana Halstead	32
Driving Creek Cafe	2
Driving Creek Railway	16
Dynamic Tree Care	12
Gaia Decorators	24
Harcourts	20-21
Himalaya Shop	14
James and Turner	10
James Drainage '97 Ltd	27
Llandem Consulting Engineers Ltd	24
Lynley Ogilvie – massage therapist	18
Mana	26
Papa Aroha Engineering	26
Peninsula Electrical Services Ltd	6
Peninsula Pest Services	17
Purnell Jenkison Oliver	15
Richardsons Real Estate	8-9
Rob's Small Motor Repairs	4
Scott Revell Building Contractor	10
Scott Simpson MP	18
Steelcraft Ltd	33
Tangiara Kiwi Retreat	27
TCDC	13
Te Korowai Hauora o Hauraki	11
The Hauraki Taxation Service Ltd	23
Trinity Network	39
Waitaia Nursery	7

Coromandel Town weekly and monthly meetings

Every Monday

Coro Gym – Step/aerobics, Peg (07) 866 8635 8am
 Mahamudra Centre, guided meditation in gompas 8.30-9am
 Coromandel Hikers' Group, Hauraki House,
 Colin & Elspeth (07) 866 7137 9am
 Monday Walkers, Irene 021 157 8408 9am
 Colville Social Services Collective,
 Colville Hall, (07) 866 6920 9am-3pm
 Kohanga Reo o Kapanga, (07) 866 8417 9am-3pm
 Coro Gym – Sit and be fit, Peg (07) 866 8635 9.30am
 Coro Gym – Fitness and Fun, Judy (07) 866 8637 10.30am
 Scouts and Cubs, Scout Den, Hauraki House,
 Abby Morgan (07) 211 9790 3.30pm
 Coro Gym – Kick fit with Christajo, 155 Pottery Lane,
 021 033 9329 5.30-6.30pm
 Shrinking Violets, Betsie (07) 866 7076 5.30pm
 Coro Contract Bridge, Coro Ambulance rooms,
 Lyn (07) 866 8858 7pm
 Four-part harmony singing, Sue (07) 866 8833 7.30pm

Every Tuesday

Homeschoolers' gathering, Julene (07) 866 8005
 Mahamudra Centre, guided meditation in gompas 8.30-9am
 Pastel Artists Coromandel,
 Coromandel Aero Club Rooms (07) 866 7220 9am-mid day
 Colville Bay Pre-School, rear Colville School, cr
 (07) 866 8319 9am-3pm
 Coro Walking Group, Ruth (07) 866 7246 9am
 Colville Social Services Collective, Colville Hall,
 (07) 866 6920 9am-3pm
 Kohanga Reo o Kapanga, (07) 866 8417 9am-3pm
 Music and Dance, Elim Church- Preschoolers Dance Group, Dawn
 (07) 866 8150 9.30-11am
 Coro Ladies Golf, Peter (07) 866 7633 tee off 10am
 Yoga, Colville Hall, (07) 866 6612 10am
 Croquet, Woollams Ave, Kaye (07) 866 8968 9.45am
 Coromandel Playcentre, Woollams Ave 10.30am-1pm
 Narcotics Anonymous meeting, 021 314 467 12 noon
 500 card session at Elizabeth Park Village, (07) 866 8886 1pm
 Coro Gym – Fitness and Fun, Judy (07) 866 8637 1pm
 Beginner Yoga with Becks, at the Anglican Church Hall,
 170 Tiki Rd, \$10. Contact 027 407 0079 5.30-6.45pm
 Badminton, school gymnasium. \$2. Racquets available, wear
 non marking sports shoes. Lorraine (07) 866 7606 6.30pm
 Ambulance training, Felix (07) 866 8279 7-9pm
 Coro Motorcycle Club, Star & Garter,
 John (07) 866 6776 7-9pm

Every Wednesday

Dharma Gaia, Meditation, (07) 866 7995 6-7am
 Dharma Gaia, Sitting & Walking Meditation,
 (07) 866 7995 7.30-9pm
 Coro Gym – Step/aerobics, Peg (07) 866 8635 8am
 Mahamudra Centre, guided meditation in gompas 8.30-9am
 Yoga with Tina at Waikato Events Centre 8.40-9.50am
 Colville Bay Pre-School, rear Colville School,
 (07) 866 8319 9am-3pm
 Colville Social Services Collective, Colville Hall,
 (07) 866 6920 9am-3pm
 Kohanga Reo o Kapanga, (07) 866 8417 9am-3pm
 Coro Gym – Sit and be fit, Peg (07) 866 8635 9.30am
 Coro Gym – Fitness & Fun, Judy (07) 866 8637 10.30am
 Coromandel Golf Club – men's, Hauraki Rd,
 Peter (07) 866 7633 tee off 12.30pm
 Scrabble Club, Joan for venue on (07) 866 7580 1pm
 Coro Tennis Club – club night, Gayle (07) 866 8063 4pm
 Wing Chun Kung Fu- Hong Kong Style,
 Chi Sau Club 027 283 0773 4.30-8.30pm
 Running Group, meet at rugby club grounds.
 Mark 027 338 6697 or (07) 866 7660 5-6.15pm
 Coro Gym – Pump with Betty, (07) 866 8635 5.30-6.30pm
 Discussion night-optional pot luck dinner, Mahamudra Centre,
 (07) 866 6851 dinner 6pm, meeting 7-8.30pm
 Walking & sitting meditation, Dharma Gaia Centre,
 (07) 866 7995 7.30-9pm

Every Thursday

Mahamudra Centre, guided meditation in gompas 8.30-9am
 Coro Walking Group, Ruth (07) 866 7246 9am
 Coro Art Group, St Andrew's Church,
 Val (07) 866 8911 9am-12pm
 Colville Bay Pre-School, rear Colville School,
 (07) 866 8319 9am-3pm
 Kohanga Reo o Kapanga, (07) 866 8417 9am-3pm
 Tai Ji, Top Floor, Waikato Events Centre,
 Sol (07) 866 8971 10-11am
 Guided meditations at the Havalona Pyramid 10-11am

Coro Gym – Fitness & Fun, Judy (07) 866 8637 10.30am
 Coro Gym – Ukulele group practice for beginners,
 Peg (07) 866 8635
 Croquet, Woollams Ave, Kaye (07) 866 8968 12.30pm
 Coro Community Garden, Glover St,
 Tai 022 601 7081 2-4pm
 Coro Gym – Kick fit with Christajo, 021 033 9329 5.30-6.30pm
 Yoga with Tina at Waikato Events Centre 5.30-6.40pm

Every Friday

Coro Gym – step/aerobics, Peg (07) 866 8635 8-9am
 Colville Bay Pre-School, rear Colville School,
 (07) 866 8319 9am-3pm
 Mahamudra Centre, guided meditation in gompas 8.30-9am
 Kohanga Reo o Kapanga, (07) 866 8417 9am-3pm
 Yoga for everyone, Anglican Church Hall,
 Katie (07) 866 6612 9-10.30am
 Colville Services Collective,
 Colville Hall, (07) 866 6920 9am-3pm
 Coro Gym – Sit & be fit, Peg (07) 866 8635 9.30-10.30am
 Coromandel Playcentre, Woollams Ave 9.45am-12.15pm
 Coro Gym – Fitness & Fun, Judy (07) 866 8637 1pm
 The Club, Woollams Avenue, ph (07) 866 8813open from 3.30pm
 Coro Tennis, Men's night, Gayle (07) 866 8063 4pm
 Coro Gym – Crazy Horse Productions,
 Natalie 021 048 9772 4.15pm

Every Saturday

Mahamudra Centre, guided meditation in gompas 8.30-9am
 Croquet, Woollams Ave, Kaye (07) 866 8968 9.45am
 Bowling Club Roll Up 12pm
 Coromandel Golf Club-club play, Hauraki Rd,
 Peter (07) 866 7633 tee off 12.30pm
 Coromandel RSA, Woollams Ave, ph The Club (07) 866 8813 2pm
 St Colman's Catholic Church-mass,
 Rings Rd, Frieda (07) 866 7872 5pm
 Prayers for dead and healing,
 Mahamudra Centre, (07) 866 6851 5-6pm

Every Sunday

Mahamudra Centre, guided meditation-in Gompas,
 (07) 866 6851 8.30-9am
 Christ Church, 180 Tiki Road, Holy Eucharist,
 Fr Philip Sallis 021 347794 10am
 Elim Church Services, Rings Rd,
 Steve (07) 866 6900 10am-12 noon
 Coro Tennis Club-club play, Gayle (07) 866 8063 2pm
 Prayers for dead and healing,
 Mahamudra Centre, (07) 866 6851 5-6pm

Monthly

RSA Women's Section Coromandel, Loes (07) 866 8053
1st Mon – Coro Patchwork & Quilters, Ambulance rooms,
 Jill (07) 866 7484 9.30am-3.30pm
2nd Mon – Friendship Group, Jocelyn (07) 866 7101
3rd Mon – Coro Patchwork & Quilters, Ambulance rooms,
 Jill (07) 866 7484 9.30am-3.30pm
3rd Mon – Alzheimer's Carers' Group, Retirement Village Hall, bring
 plate & koha, (07) 282 0453 10.30am
1st Tue – Coro Motorcycle Club general business
 John (07) 866 6776 7.30pm
2nd Tue – Coromandel/Colville Cmty Board, Council Chambers,
 (07) 866 1001 9am
2nd Tue – Public Trust, Harcourts, 0800 368 620 by appt
1st Wed – Coro Embroiderers' Guild, Ambulance Station, Jill
 Wilson (07) 866 7484 10am-3pm
1st Wed – Lions Dinner Meeting, Ambulance Rooms;
 Pres. Nigel Strongman (07) 866 8045 6pm
2nd Wed – Garden Circle, ph Julie Jensen for venue,
 (07) 866 7546 1pm
3rd Wed – Herb Federation NZ.
 Contact Ann Kerr-Bell 021 046 1647 9.30 to 11am
3rd Wed – Lions Business Meeting, Ambulance Rooms;
 Pres. Nigel Strongman (07) 866 8045 7pm
2nd Thu – Coromandel Writers' Group,
 Barbara (07) 866 8299 10.30am-2.30pm
4th Thu – Coro SeniorNet, school music room,
 Loes (07) 866 8053 1.30pm
3rd Sat – Luncheon Ladies, Lorraine (07) 866 8144 12pm
1st Sun – Coro School of Mines & Historical Sty/Museum,
 (07) 866 8711 4pm
1st Sun – St Andrew's Union church service, Rings Rd,
 (07) 866 8633 10am
2nd Sun – Young Eagles, Tiki Rd, Lisa (07) 866 2055 9am
3rd Sun – St Andrew's Union church service, Rings Rd,
 Hilda (07) 866 8633 10am

Coromandel Town Chronicle


Calendar of events Coromandel Town April 2017

MON		TUE		WED		THU		FRI		SAT		SUN	
3	St John Annual Appeal Week starts	4		5	Development of a school orchard at CAS Richard Chrisp mini exhibition starts at Driving Creek Café (see ad pg 36) Pub quiz at Admirals Arms (see ad pg 2)	6		7		1		2	Daylight saving ends Biodynamic Gardening Workshop (see pg 6)
High tide 12.06pm (2.9m) Low tide 5.46am (0.4m), 6.10pm (0.3m)		High tide 12.33am (2.9m), 1.03pm (2.8m) Low tide 6.46am (0.5m), 7.09pm (0.5m)		High tide 1.34am (2.8m), 2.03pm (2.7m) Low tide 7.49am (0.6m), 8.12pm (0.6m)		High tide 2.37am (2.7m), 3.06pm (2.6m) Low tide 8.52am (0.7m), 9.17pm (0.6m)		High tide 3.39am (2.7m), 4.09pm (2.6m) Low tide 9.54am (0.7m), 10.19pm (0.6m)		High tide 11.20am (3.1m), 11.43pm (3.1m) Low tide 4.57am (0.2m), 5.24pm (0.1m)		High tide 11.12am (3.0m), 11.36pm (3.0m) Low tide 4.50am (0.3m), 5.16pm (0.2m)	
10		11	Solar powered school meeting at CAS (see pg 26)	12	Pub quiz at Admirals Arms (see ad pg 2)	13	End of school term	14	Good Friday Colville Festival starts (see pg 31) Coromandel Group Easter Exhibition opens (see pg 30)	15	Colville Festival Music Night (see pg 31) Pottery Seconds sale (see pg 30) Richard Chrisp mini exhibition ends at Driving Creek Café (see ad pg 36)	16	Easter Sunday Colville Festival Variety / Cabaret Show (see pg 31) Pottery Seconds sale (see pg 30)
High tide 6.21am (2.8m), 6.51pm (2.8m) Low tide 12.05am (0.5m), 12.32pm (0.5m)		High tide 7.07am (2.8m), 7.36pm (2.8m) Low tide 12.51am (0.5m), 1.17pm (0.5m)		High tide 7.50am (2.8m), 8.18pm (2.8m) Low tide 1.34am (0.5m), 1.58pm (0.5m)		High tide 8.31am (2.8m), 8.58pm (2.8m) Low tide 2.14am (0.5m), 2.37pm (0.5m)		High tide 9.11am (2.7m), 9.36pm (2.8m) Low tide 2.53am (0.5m), 3.15pm (0.5m)		High tide 9.49am (2.7m), 10.13pm (2.7m) Low tide 3.52am (0.6m), 3.52pm (0.6m)		High tide 10.27am (2.6m), 10.52pm (2.7m) Low tide 4.12am (0.7m), 4.30pm (0.6m)	
17	Easter Monday CHRONICLE DEADLINE – May issue content – 4pm	18		19	Pub quiz at Admirals Arms (see ad pg 2)	20		21		22		23	Take a Kid Fishing Competition (see pg 35)
High tide 11.06am (2.6m), 11.33pm (2.6m) Low tide 4.54am (0.7m), 5.10pm (0.7m)		High tide 11.48am (2.5m) Low tide 5.39am (0.8m), 5.53pm (0.8m)		High tide 12.19am (2.5m), 12.33pm (2.4m) Low tide 6.27am (0.9m), 6.41pm (0.8m)		High tide 1.09am (2.5m), 1.23pm (2.4m) Low tide 7.19am (0.9m), 7.35pm (0.9m)		High tide 2.03am (2.5m), 2.18pm (2.4m) Low tide 8.14am (0.9m), 8.35pm (0.9m)		High tide 2.59am (2.5m), 3.17pm (2.4m) Low tide 9.10am (0.8m), 9.35pm (0.8m)		High tide 3.55am (2.6m), 4.17pm (2.5m) Low tide 10.05am (0.7m), 10.32pm (0.7m)	
24	2-Week Insight Meditation Retreat starts at Mahamudra (see pg 14) Coromandel Group Easter Exhibition ends (see ad pg 30)	25	Anzac Day Commemoration (see pg 19)	26	Meat Pack / Laurie Olliff Trophy, at Coromandel Golf Club (see pg 34) Pub quiz at Admirals Arms (see ad pg 2)	27		28		29	King Trophy at Coromandel Golf Club (see pg 34) DJ Tuku at Admirals Arms (see ad pg 2)	30	
High tide 4.49am (2.7m), 5.15pm (2.7m) Low tide 10.59am (0.6m), 11.23pm (0.5m)		High tide 5.41am (2.8m), 6.10pm (2.9m) Low tide 11.51am (0.4m)		High tide 6.53am (3.0m), 7.02pm (3.0m) Low tide 12.16am (0.4m), 12.42pm (0.2m)		High tide 7.24am (3.1m), 7.53pm (3.2m) Low tide 1.06am (0.3m), 1.33pm (0.1m)		High tide 8.16am (3.1m), 8.43pm (3.2m) Low tide 1.57am (0.2m), 2.23pm (0.0m)		High tide 9.09am (3.2m), 9.34pm (3.2m) Low tide 2.48am (0.2m), 3.14pm (0.0m)		High tide 10.01am (3.1m), 10.27pm (3.2m) Low tide 3.40am (0.2m), 4.05pm (0.1m)	

COROMANDEL RUBBISH & RECYCLE TRANSFER STATION & E-CYCLE HOURS

Tuesday and Thursday 11am-4.30pm
Saturday and Sunday 11am-5.30pm
(Closed on Good Friday, but open on
Easter Monday from 11am-5.30pm.
Open from 1pm-4.30pm on Anzac Day)

KEY

 New moon

 Full moon

Tide times and heights from Land Information NZ
and are for Coromandel Harbour.
For Thames times -15min High and -18min Low.

Make sure your event gets listed

To get your event listed, email the details, your name and contact phone number to Debbie at corochronicle@gmail.com with the subject "event". Or post to Jude Publishing, PO Box 148, Coromandel. There is limited space available and will be published subject to space availability, with preference to not-for-profit groups.

UPCOMING MONTHS

MAY

Thursday 4 – "My Name is Moana" concert (see pg 31)
Saturday 6 – Seafood Fest
Thursday 18 – Guitar concert (see pg 31)
Thursday 18,19,20 – Coromandel Players play "Spreading Out" (see pg 30)
Saturday 13 – Family Fun Run (see pg 34)



We have even more Coromandel properties for sale online!

View online www.trinitynetwork.co.nz/properties/



TRINITY
NETWORK
REAL ESTATE

For Sale



Coromandel, 860 Buffalo Rd
Asking Price \$1,250,000 + gst

For Sale



Coromandel, 1154 Colville Road
Asking Price \$1,250,000

For Sale



Coromandel, 54 Little Bay Drive
Asking Price \$850,000

Under Contract



Coromandel, 105 Wharf Rd
Asking Price \$525,000 + gst

Under Contract



Coromandel, 1110 Rings Road
Asking Price \$439,000

For Sale



Coromandel, 1455 Buffalo Rd
Asking Price \$205,000

More Savings

House Value	Higher Commission Rate Example	Our Commission	Savings
\$400,000	\$16,428	\$13,225	\$3,203
\$600,000	\$21,100	\$15,525	\$5,575
\$1,000,000	\$30,228	\$20,125	\$10,103

Trinity Network Commission is \$7500 + 1% of the sale price + gst
Higher Commission Rate Example is based on 3.95% on first \$300,000 of sale price + 2% of balance of sale price + a \$500 fee + GST. Higher Commission Example is not based on any particular agency, average or standard charge made by other companies. Actual rates will vary between companies, branches and agents. The commission table and Higher Rate example are provided to help assess potential savings only. Trinity Network does not accept responsibility or liability if actual savings vary from the examples given. For more information please contact admin@trinitynetwork.co.nz.



More Services



Better Technology

Team Rob & John

Familiar faces under the Trinity Network Banner

Honest - Integrity - Commitment - Results!

Contact us today to discuss all your property needs. **Save thousands in commission!**
Free market appraisal and confidentiality assured.

Rob Keatley
Real Estate Consultant
M: 0275 777 424
E: rob.keitley@trinitynetwork.co.nz

John McCaughan
Real Estate Consultant
M: 021 212 4423
E: john.mccaughan@trinitynetwork.co.nz



www.trinitynetwork.co.nz

REAA Licensed MPENZ

COROMANDEL REFRIGERATION & HEAT

24 Months Interest Free on All Mitsubishi Electric Heat Pumps & Air Conditioners

**Mitsubishi Electric
MSZEF25VA**



Heating 3.2kW
1.1kW to 4.2kW
Cooling 2.5kW
1.2kW to 3.4kW



Fully Installed From:

\$26.07 Per Week*

**Mitsubishi Electric
MSZEF42VA**



Heating 5.4kW
1.4kW to 6.3kW
Cooling 4.2kW
0.9kW to 4.6kW



Fully Installed From:

\$35.22 Per Week*

**Mitsubishi Electric
MSZGE25VA**



Heating 3.2kW
1.3kW to 4.5kW
Cooling 2.5kW
1.1kW to 3.5kW



-Optional WIFI
Control
-Suitable for a
bedroom
-19DB super quiet



Fully Installed From:

\$24.73 Per Week*

**Daikin
FTXS50LVMA**



Heating 6.0kW
1.7kW to 7.7kW
Cooling 5.0kW
1.7kW to 6.0kW



FULLY INSTALLED PRICE:

\$3199.00 incl GST*



**Westinghouse
WLE620WA**

Stove

H1145x W596x D617mm
80L Oven Capacity
2 Cooking functions
Easy-clean surfaces
Storage compartment
24 month warranty

Was \$1199.99

NOW

\$999.97 incl GST*



**Daikin Double
Deal**



Daikin FTXS25LVMA
Heating 3.4 (1.3-4.7)kW
Cooling 2.5 (1.3-3.2)kW



Daikin FTXS50LVMA
Heating 6.0 (1.7-7.7)kW
Cooling 5.0 (1.7-6.0)kW

BOTH FULLY INSTALLED PRICE:

\$4997.00 incl GST*

SmartVent



Smart Vent ventilation system

Smart Vent Positive Pressure ventilation systems draw fresher, drier air into your home from either the roof cavity or outside. This air is then passed through a high efficiency filter and introduced into your home. The introduced air forces out the moist, stale air that causes condensation, mould & mildew.



**Westinghouse
WBB3400WG**

Fridge Freezer

H1646x W598x D661mm
Glass shelves
Flexi door storage
Crisper bin
24 month warranty

Was \$1199.99

NOW

\$999.97 incl GST*



**GreenStuf R2.9 Ceiling
Insulation**

Save money on heating costs this winter and make your home healthier and more comfortable with GreenStuf ceiling insulation.

GreenStuf is:
-100% Polyester
-Allergy Safe
-Safe to Touch
-Local
-Guaranteed for 50 years
-Made from Recycled material

Fully Installed From:

\$26.00 Per Sqm*



Building a House? Ask us about our full Home Appliance Packages!

435 Kapanga Rd, Coromandel

07 866 8463

*Conditions apply see in store for details. A free no obligation onsite quotation is available for any of the above packages. Finance payments based on 24 month term interest free provided by Gilrose Finance, Lending and credit criteria applies. Heat pump prices based strictly on back to back installations. Offers available while stocks last or until May 8th 2017. Westinghouse prices do not include delivery or installation.