

August 2015
Volume 19 Issue 8

FREE
Community Magazine

Coromandel Town Chronicle

Founded and owned by the Coromandel Town Business Association since 1996



Illuminations

PAGE 3

New phone box PG 4



Planting of Pohutukawas PG 11



Literacy Award PG 23



Welcome to the *Coromandel Town Chronicle*

Cover picture:

Illume Festival montage – pictures supplied by the Coromandel Town Business Association.

The *Coromandel Town Chronicle* is published by Jude Publishing Ltd on behalf of the Coromandel Town Business Association. It is delivered free to the Coromandel area.

Jude Publishing Ltd
PO Box 148, Coromandel 3543
www.coromandeltownchronicle.co.nz

If you have any news stories that you'd like included please email corochronicle@gmail.com.
If you are not sure how to put an article together for publication then find tips and advice on the website:
www.coromandeltownchronicle.co.nz/html/guidelines.html

For advertising please email Debbie on corochronicle@gmail.com or phone (07) 866 7119 or 021 235 6648

The Coromandel Town Chronicle is printed with vegetable oil based inks by Print House Ltd, Hamilton. An accredited FSC and PEFC printer. Enviromark Bronze certified.

Coromandel Town Business Association's Mission Statement: To support business, partnering with our community board, to strengthen and encourage the development of Coromandel Town and environs.

**Want to support the CTC?
Live out of town? You need an annual subscription.**

Only \$38 (incl. GST) NZ postage only.
See contact details above.

**Deadline for the next issue is 4pm
Monday 17 August**

Disclaimer: The publisher and its editors of the *Coromandel Town Chronicle* shall not be responsible in any way for opinions expressed in letters and articles contained in the *Coromandel Town Chronicle* or for loss or damage suffered by anyone in reliance upon the information contained therein. Further, no endorsement of any product or service featured or advertised in the *Coromandel Town Chronicle* should be implied or assumed.

Coromandel Town Business Association Disclaimer: The opinions of the editor do not necessarily reflect the opinion of the Coromandel Town Business Association. The Chronicle should be representing all parties and showing a cross section of feedback from the community and we believe this to be the case. The editor of any publication is entitled to a personal opinion and provided this is identified as such then this is acceptable to us.

ISSN 1178-721X (Print)
ISSN 1179-4895 (Online)

Editor's comments

I was overseas while the Illume Festival was on, but I was facetimeing my partner when the fireworks started to go off – so the kids and I ended up seeing them – they looked great! I hear the festival all went well despite the weather trying to dampen things again.

Keep warm this winter – why not try the Mana Winter Green Soup on page 20.

August brings the Waiter's Revenge Dinner – raising funds for the foodbank, theme nights at Pepper Tree Restaurant and Castle Rock Café, a Music Society concert, Kiwisport on Saturdays for the kids and more – see back cover for dates.

Debbie

Letters

Light Festival

To the Community of Coromandel,
Congratulations to you on an amazing Light Festival, for a small town you went all out. My husband and I saw it advertised via an AA website and decided to come up from Tauranga to check it out.

The parade was awesome and the carnival atmosphere was great to be a part of. We will certainly be back next year! We are regular visitors to the area, and despite some of your local business closing you still have a great community spirit and we will certainly be singing your praises as a fun vibrant place to visit.

Helen Harper, Papamoa

Amalgamation of Coromandel R & S Association Inc. and The Coromandel Bowling Club

Dear Editor,

The amalgamation of Coromandel R & S Association Inc. and The Coromandel Bowling Club has been approved by the majority of members of both clubs voting for the merger. At the RSA, suggestions re a merger were mooted as far back as 2010, at that point the feeling was a big no. Since that time some of our older members have sadly passed away, I wonder how they would feel?

Firstly the voting. Coromandel Bowling Club I believe, has 50 members all who play bowls and live in Coromandel town or close by. No problems there. Coromandel RSA sent out notices to all our paid-up members – 108 in all. Members from Orewa Beach in the north to Otago in the South. In between we have Tauranga, Thames and environs, Auckland and Pukekohe area a different mix to all living in one district. Even though the majority of these members never, or hardly ever, set foot in our club, they are entitled to vote as that is democracy. A hardcore of between 25 to 30 attend our club and so keep it viable. I believe there were 18 votes to keep the status quo, I rest my case.

Also the location of the RSA is it's visibility and closeness to the venue for our two most important commemorations namely Anzac and Armistice days.

I am a long time supporter and member of the RSA as was my late husband and I will continue to be so, but I am saddened by this move.

Regards,
Pat Williams, Coromandel

Send letters to the *Coromandel Town Chronicle*, PO Box 148, Coromandel 3543 or email to corochronicle@gmail.com. Contributions should be kept short, and should not exceed 350 words. They must include name, address and telephone number. The editor reserves the right to reject letters or edit them for clarity and space.

Events

August – see back page

September

Saturday 19 – Colville Market Day (Suffrage Day) at the Colville Hall – 10am-2pm

Friday 25 – Coromandel Music Society present String Wizardry

October

Saturday 31 – The Cranleigh K2 Road Cycling Classic

November

Sunday 1 – Coromandel Music Society present Miho's Jazz Orchestra



Lionel Parsloe with his goodie bag and award from the Volunteering Waikato Volunteer Excellence Awards held at the end of June in Hamilton. Lionel was nominated by Coromandel Area School for his contribution to the Keltic Fair which raises funds every year to benefit the school.

Poetry SPOT

Sunday Morning in Colville

By John Irvine

7.00 am
the sun has yet to smile
over the eastern hills
not a cloud to be seen
leaves on trees
enjoy a respite
from any breeze

I watch the line of light
advance across the paddock
swallowing the shadows
flowing purposefully
a perfect day to be
outside and doing
I draw all the curtains
quietly close the door
and smile lugubriously



Illume

By Matt Sephton

The 2nd Illume Festival has just finished, and we are all so happy with how it went, what a great success! In the middle of winter, in the cold and wet, you came out and enjoyed it, so thank you to all of you. Even the rain came to the party – creating some spectacular reflections and effects on the road. The food at the night market was delicious, the music lively, the lights – lanterns, coloured floods, festoons, jellyfish – were bright and resplendent, the floats in the parade were inspiring, and those fireworks, wow! It was great to see people hitting the keyboard on the “patatap” sound and light projection, and people in gumboots and umbrellas getting amongst it regardless of the weather, that’s what it’s all about.

We have built up a great team of people to help drive the Illume Festival. It’s a wonderful thing to be working on a dynamic and fun event, and then to see the reaction when it finally comes alive is such a special thing. Outside the immediate organising committee, there are so many people in Coromandel that contributed to the festival, it is largely thanks to this community support and spirit that the event was such a success. So please see our official “Thank You” list below, your name might be on there.

Back in 2013 when we started planning the first Illume, we were really just feeling our way, and many did not know what to expect or how to get involved. This time it was clear that there was a good idea of what this festival is about, so the level of community involvement was more significant, which contributed immensely to the success of the event.

There are no doubt plenty of ideas floating around after this festival, so please let us know your thoughts – what you loved, what you did not love, things we can include for next year and any ways to improve this festival. It is a free event put on for the people of this town, so we wish to involve as many people as possible in Illume 2016 – either as active participants, or simply as spectators enjoying the atmosphere.

One of the main aims of Illume is to brighten up the winter, and we certainly achieved this! This little town is capable of great things, so we are all very excited about the future of Illume. If

we can continue to develop this fantastic community event, we will build something that is a real drawcard for visitors and a wonderful celebration of our town and people, something for all of us to get behind and enjoy. So thank you everyone, please let us know what you thought, and how we can make it even better next time.

Illume thank you list

The following people are the people who made Illume 2015 the spectacular success that it was. Thank you everyone for lighting up.

Creative team (led by Matt Sephton and Caitlin Moloney), Suzie Taylor, Wailin Elliott, Andrea Gaia, Robyn Lewis, Manu & Timu Nathan, Briar Van Dort & Ava & Eli, Daniel Kirsch, Henery Mackeson, Ben Leaker, Tony Keyworth, Lachlan Rouse, Brenda Kelsey, Andre, Kimberley Lecky, Kiwi Can & Room 5 Coromandel Area School.

Electrical: Peter Richardson, Zephon Moody, Wailon Brown, Coromandel Library – for their support.

Council and all the businesses that made the effort to light up and contribute to power costs: Chris Mueller, Parks & Reserves Manager for TCDC; Keith Stephenson & Coromandel

Fishing Club – marquee; Work Co-op – Jean Ashby and her crew Glen Anderson & Raymond Wikaira; Raymond and Neville – Clean Up; Kelsey family – behind the scenes; Richard Kelsey, Gary Wishnowsky and his daughter Jamie – road/traffic; John McCaughan from Harcourts Coromandel – Fireworks; SJR – Toilets; Rhys Williams – cleaning; Steve Greaves – locking up at night; Dave Pakau and Tuinga Heke from Street Smart – street cleanup; Trish King of the Lions Club – organising the parade; Jayne Lister – design and making costumes for parade; Maia Fraser – made cakes for donation; Tim as Robot Man; Nate Savill the blacksmith; Brooke Beattie – for window display; Coromandel Independent Living Trust; Brian McMillan; Ezy Kemp – Production and Stage; Marlene Johnson – Street Market organiser; Jess Dwizulska – Dancing in the Dark event; RSA; Bev Johnson – Over the Fence; Gayle Lecky – lighting her garden and the snowman; Coromandel Players – street singing; Anglican Church of Christ; Elim Church; 360 Discovery Ferry – contribution to prize; Coromandel Community Pre-school; Coromandel Cabs/Jane Warren – accommodation prize; Powerco – lighting the bridge and back up support Fri & Sat nights; Rick and Sam Ward – traffic management for parade; Vospertrons; Coro Clowns; Whiti Fools; Eddie and Heather Windhager; Thumping Thunder Fireworks; Sy Gubay; Coro Gym – for Frozen Zone (see Peg’s thankyou’s on page 28); Goldiggers; BNZ; Lesley & Peter Pritchard – use of old Four Square building; Coro Café; Laundromat; Weta; Coromandel Family Health Centre; Coastway Cutters; Wyuna Studios; Neville & Ngaire Burgess – for phone box light power; Coromandel Superette; Coromandel Accommodation; Te Korowai; The Bizarre; Richardsons Realty; Tidal Takeaways; James & Turner; Harcourts Realty; Laan Ya Mo Restaurant; Hauraki Taxation; Coromandel Pharmacy; Wild Spirit; Coromandel Meat Keeper; The Pepper Tree; The Source; Star and Garter; Umu Café; Chai Tea House; Coromandel Colonial Cottages; Success Café; MEG; Rebecca Duffin, Laura White and Ben Day from TCDC; CFM – for fireworks photos; Rachel Holmes – for festival photos; Coromandel Top 10 Holiday Park; Anne Loudon; Fire Brigade – for standing by at Fireworks; St John – for standing by all weekend; John Morrissey – for police presence.

Financial Supporters: TCDC for the continued funding that makes Illume possible, Driving Creek Railway, Coromandel Town Business Association, Ed Bucket & Diane Cade, Lions Club, Coromandel Marine Farmers Assn, Coromandel Quarry and Contracting Ltd, Harcourts, Coromandel Court Motel, Star and Garter Hotel, Steve Greaves, Jan Autumn, Karen & Brian McMillan, Maia Fraser.



Coromandel's New Heritage Telephone Box

By Karen McMillan

Our new telephone box was opened on 1 July.

Brenda Kelsey, Coromandel Town Business Association (CBA) Chairperson, started the proceedings by welcoming everyone in attendance.

When the CBA first started the project, I had no idea the amount of people that it would take to build this heritage styled phone box; but what I did learn, this was not going to be an easy task.

Firstly, we had the arduous task of removing the 5 Spark telephone boxes that were spread out around the town; but thanks to Smiley and the boys along with Brian, Hamish & Ross, they were the men for the job. CBA really want to acknowledge and thank these men; without them we would not have been able to start the project.

This was a true community project – Larry and Joan Knudsen from Coromandel ITM donated the timber for the build and their truck to deliver the phonebox to the site; all of this would have been too great an expense for the CBA and would have caused a long delay as we tried to fundraise.

To the rest of the local team, who donated a lot of their time and expertise; Peter Richardson, John Walker, Tony Burton, Mike Barton, Greg Williams and Geoff Kingsmill who designed the plaque & signage; we thank you for your support and contribution, with a wonderful end result.

We would like acknowledge and thank Chris Muller, our Parks & Reserves Manager, for his guidance and excellent communications with all groups, to get this project completed; and also the Colville Coromandel Community Board for supporting the Business Association with this project.

I have left until last the absolute super heroes (every super hero needs a telephone box - don't they?). Without them this truly would not have happened and I believe the project would have been shelved. I would like to introduce to you Nik Lockley and John Liddell.

Nik and John are from Peninsula Home Maintenance in Thames.

Nik offered to build the heritage style phonebox for our community at no cost. The cheapest quote I received to build the phonebox was \$10,000+GST.

Nik and John built this on their occasional weekends off and worked around their young families.

Nik and John, we really appreciate what you have done for us and because you reside in Thames, we have decided to also give you an honorary life membership of the Coromandel Town Business Association. Thank you so much.

Nik cut the ribbon and the Coromandel community phonebox was declared open.



Daffodil Day

By Robyn Dudson on behalf of the Waikato Branch of the Cancer Society

August for the Cancer Society is time we hold our annual Daffodil Day Street Appeal. This year it is on **Friday 28 August** and once more we will set up our street stall outside Coromandel Pharmacy manned by our happy bunch of ladies. Marie Mead is organising everything this year and will have some Cancer Society products for sale as well as a couple of raffles, and of course bunches of Daffodils. Ann McNair's stunning painting is on display in the Coromandel Pharmacy this month along with the raffle book. It will be drawn around midday on Friday 28 August. All monies raised is donated to the Waikato Branch of the Cancer Society.

Coromandel Walking Group

By Irene Dunn

Our Walking Group had a special day last month eating – not walking! We celebrated with a mid-winter luncheon in Whitianga with a good number of members enjoying each others' company and great food. We were back on the pavement the next Thursday walking off the calories! Thanks to Ruth for organising this luncheon.

Welcome to new walkers in our Group – we walk each Tuesday and Thursday and meet outside the Lotto Dairy at 9am. Our hour-long walks take us around the streets of Coromandel town and further afield for special walks.

Sometimes it's hard to make the effort in winter to get out walking, especially if the weather looks dodgy but it's so good for our health and catching up with friends.

Do come and join us!

Happy walking everyone.

Contact Ruth (07) 866 7246

BUILDER/RENOVATOR
Jack Carson



Phone: 027 276 8976

Licensed Building Practitioner



**Coromandel
QUARRY &
Contracting Ltd**

- All grades of metal delivered
- Driveways, roading, earthworks
- Please call for a FREE quote

Telephone 07 866 8306

email: richard@cqc.co.nz www.cqc.co.nz

g.a.s.

gasoline alley services

Coromandel Garage Ltd

What we offer:

- Service and repairs on all makes and models
- WOF's
- Exhaust fabrication

- Truck and tractor maintenance & repair
- Motorcycle WOF's
- Pensioner WOF's \$40
- Call out's & tow in's

**BP Card
Accepted**

- All tyres
- Fuel
- LPG
- Trailer hire

*Best Value
for your money
with over 40 years of
combined experience
from our two
fully qualified
mechanics.*

Coromandel Garage Ltd, 226 Wharf Rd, Coromandel. 07 866 8736

Coromandel's Future

By Barry Brickell

Destination Coromandel's Chief Executive, Hadley Dryden, has taken an interest in my ten year vision for the Peninsula, in particular the upper half, which I wrote at the request of the editor of *Coromandel Life* magazine. Here is a revised version.

This "word picture" is assuming that the long pier (or jetty) has been built and is now functioning as a maritime gateway to the Peninsula.

"The new generation of fast and comfortable catamaran ferries are now able to use the Pier on all tides, offering a regular timetable service between Auckland and Coromandel. Such is the popularity of this new destination that the service, dubbed the Blue Highway, is running all year round even through winter months. This is markedly benefiting Coromandel Town and district with once closed shops now open for business.

The pier is now proving popular with 'boaties', especially from Westhaven and other marinas looking for a destination in the Hauraki Gulf where they can tie up, get good food and wine in the town, do shopping and enjoy the local attractions. During suitable weather, these 'boaties' together with fishing charter operators contribute a huge amount to the local economy. The pier with its railcar transport into the town is also attracting custom in its own right as are similar piers in

other parts of the world.

Extensions to the marine aquarium in the Town are being considered by the marine farming industry as another attraction based on some of the technology at the Kelly Tarlton aquarium in Auckland.

With the new Government's increased funding allocation to DOC on the Peninsula, and the considerable contribution being made by concessionaires operating on the DOC estate, the newly opened heritage and nature-experience walking tracks are proving popular all year round which is a surprise to some. Old goldmining relics that used to make 'real' gold are beginning to make other forms of gold in more beneficial ways. Native wildlife, especially in the form of endangered fauna, are also attracting much attention such as the colourful native tussock hen, Takahe, and our unique native skinks and geckos in their enclosures.

With the cessation of pine forest logging on steep hills on the Peninsula following the last harvesting, which is still ongoing, we look forward to the hills becoming covered with regenerating kanuka and manuka scrub forest competing with the surviving naturalised pines. Eventually, heavy log trucks on our narrow twisty roads will also be gone, due to the economics of remote pine forestry and diminishing returns from Asian markets. This is already resulting in cleaner stream water, no longer laden with silt washing down into the estuaries and harbours. There has been widespread concern

from regional, local Councils and the public about fresh water quality nationwide. With the cessation of exotic pine forestry and the banning of opencast mining on Crown land over the Peninsula, water quality has improved to the extent that most streams now have potable water, safe to drink. With the regeneration of kanuka/manuka forest, this now being regarded as a permanent asset not only protecting the land and soil build-up but assisting the economy with honey production and thinnings for quality furniture wood and firewood.

Iwi participation in the conservation, enhancement and clean-up of polluted coastal marine resources is being increasingly recognised by DOC and Councils with accommodation grants towards marae facilities. Similarly, it is pleasing to note the increase in young people participating in conservation projects as well as sporting events thanks to donations and bequeathments from councils and interested private citizens who can now claim tax rebates".

Finally, it would not be too much of exaggeration to suggest that the northern part of the Coromandel Peninsula becomes a gazetted Forest Park in due course, once the community has become attuned to the concept as it would carry economic as well as social benefits. But this requires vision rather than wishful thinking. I hope this vision of mine becomes a reality but I will probably not live long enough to see it!

Protect yourself with a

FREE CERVICAL SMEAR TEST

A woman's best protection against developing cervical cancer is having **regular cervical smear tests**. A



cervical smear test is a screening test to find abnormal changes in the cells of the cervix.

Phone Te Korowai Hauora o Hauraki now to make an appointment with one of our nurses for your FREE* cervical smear test

- it could save your life!

**enrolled clients only*

- Without cervical screening, about one out of 90 women will develop cervical cancer and one out of 200 will die from it.
- With cervical screening about one out of 570 will develop cervical cancer and one out of 1280 will die from it.



Te Korowai
Hauora o Hauraki

*Health & Wellbeing services for everyone
in our community*

FREE DIABETES ANNUAL CHECK

- Do you have diabetes?
- Are you an enrolled Te Korowai Hauora o Hauraki client?
- Have you had your annual diabetes review?

It is important to have your annual FREE diabetes review so the doctor and nurse can make sure you are managing your diabetes to help reduce the risk of complications that may affect your eyes, kidneys, nerves, heart and feet.

This is a one-hour thorough health check.

**Regular check-ups are the cornerstones for
good diabetes control**

Te Korowai Hauora o Hauraki
Coromandel clinic open:
Monday-Friday: 8.30-5pm
Ph: 07-866 8084
www.korowai.co.nz

Casual
patients
welcome

Matariki - Frost and Firewood

By Catherine Delahunty, Green MP

The beautiful freezing weather last week was a reminder that without an affordable heat source a house is not a home. I felt very lucky to be sitting close to my wood burner while the white frost gripped the garden and froze the rainwater in the wheelbarrow into a solid block of ice. But what about people with no access to wood, no money to pay for the heat pump or the heater? The home insulation scheme subsidy doesn't provide for those who cannot match the contribution and partial insulation really doesn't work. The Government has just started to acknowledge that cold damp Housing New Zealand houses can be death traps and that rental properties should have insulation but are still rejecting the idea of a Warrant of Fitness for a rental property. This is a shame because next to food, shelter is the most important human need. Compulsory smoke alarms in rental properties is a good idea but you cannot keep the kids warm in front of one. The small towns of the Coromandel have some houses that need a lot of work to be warm and dry. I saw this when we door knocked for the election. Some of the houses were Housing NZ homes, and they have a social obligation to provide a decent living environment. Then there are the bachs at the beach built for temporary use in warm weather which have become permanent homes. Everyone who is warm and dry this winter could spare a thought for those who are missing out and remind the Government that the Green Warrant of Fitness for homes is a good idea. If it's good enough for a car why not a house?

Solar power is getting more affordable and we have no shortage of sunshine even in winter but again you need to have the capital to buy the infrastructure. After that solar becomes affordable and is a real solution in remote areas. We would like to see solar schools, marae and state houses because solar pays for itself in a few years. However people who cannot afford the power bill cannot own a house, let alone convert to solar. The inequality gap is clearly demonstrated through the fuel poverty of people on low incomes. We are a wealthy country but the wealth is not shared. While some families have overseas holidays and underfloor heating, too many others are stuck in cold houses with sick kids. We can reduce the gap by being honest about its causes and supporting practical solutions. Matariki is a time for reflection and my reflection is that at the very least everyone deserves to be warm enough at home.

**RSA News**

By Ian Franklyn, President

Matters seem to be gathering momentum and as you read this we will have had our first Club night at the Bowling Club in Woollams Ave.

Saturday 18 July was our penultimate Club night in Kapanga Rd and happily coincided with birthday celebrations for Pat Williams and Peter Thompson. A small "band" appeared from nowhere and led several hours of fine singing.

Although the time for submissions has passed, RSA will continue to "fight for the flag" by insisting that a referendum is not necessary and that the majority of New Zealanders support retention of the present flag. You can support RSA by visiting www.facebook.com/RSANational or on Twitter @RSANational. Bumper stickers "Fighting for the Flag" are available from RSA members. Cost \$1.

If you are considering joining either RSA or Coromandel Bowling Club, come along and meet us all. Bowling Club nights are Friday from about 4pm and RSA Club nights are Saturday from 2pm. If you are shy, give me a ring and you will be looked after.

Contact Ian Franklyn, President on (07) 866 7138

Colville Social Services Collective Trust to compete to win \$10,000

Five finalist organisations have been chosen to present their community projects to a panel of funders in a "Dragons Den" style event and come away with a grant to help fund their project. The organisation judged the most promising and best presented project will be awarded up to \$10,000 for the project from a total prize pool of \$15,000. All finalists will receive a prize.

The "Dragon's Den" will take place at the end of July at Community Waikato's conference called Rising to the Challenge, Hikitia ki te Wero. Community Waikato CE, Andrea Goble, says that the Dragons Den provides a great opportunity for organisations to highlight their work and will be entertainment with a serious purpose— a different way to allocate grants to deserving organisations.

Colville Social Services Collective Trust, Colville is one of the finalists. They wish to purchase a caravan to be used as an office/meeting space. The Chronicle would like to wish them the best of luck.

COROMANDEL PROPERTY MAINTENANCE

LAWNS ~ HEDGES
SPRAYING
ROTARY SLASHING ~ SECTIONS
ODD JOBS
COMPETITIVE PRICING

CONTACT: RICK WARD - 07 866 8271 or 027 352 8664

SeniorNet

By Loes Beaver

We have held two workshops of late and it is very rewarding to receive feedback from these workshop. We are now able to set some courses, as well as the one-on-one sessions.

We have tutors for Microsoft, Apple, smartphone, tablet and ipad.

We can also assist our members with programmes and knowledge when updating or purchasing any electronic equipment.

Monthly meetings are the last Thursday of each month.

Contact me for any enquiries, Loes (07) 866 8053

**MASSAGE THERAPY COROMANDEL**

- ★ Deep Tissue Remedial Bodywork
- ★ Relaxation / Swedish massage
- ★ Lymphatic Drainage
- ★ Hot Stones Massage

Lynley Ogilvie, RMT.

Call for an appointment: (07) 8668684 or 021 866868



SCOTT REVELL
BUILDING CONTRACTOR



- New Homes
- Renovations
- Additions \ Repairs
- Bathrooms
- Decks \ Fences \ Landscaping

Prompt Professional Service
srevell2010@hotmail.co.nz
027 861 6592
COROMANDEL

Museum News

By Raewyn McKinney

Following our Annual General Meeting, held in June, I remind members of the Coromandel School of Mines & Historical Society Inc that annual subscriptions are now due. The subscription has been kept at \$15 per person per year. Payment can be sent by cheque to me in Flays Road, or paid directly to our bank account at BNZ, Coromandel.

Recently we have relocated the original safe from the Coromandel Drapery to the museum. We thank Dennis and Joyce Stapleton very much for their donation of this safe, and we thank Alex Stobie for his patience. We also thank everyone involved in the relocation of the safe, in particular Sue Schlaadt of Coromandel Goldiggers, without whose forklift the job would never have been successfully completed. It is planned that this safe will become the centre-piece of a display about the early days of commerce in Coromandel.

Another recent donation is a collection of paintings of early Coromandel buildings, painted and donated by Robyn Harrison. We wish we had the room to display all her paintings, however, as we do not have the room, with Robyn's permission we will look to sell these paintings sometime in the future. We are confident this will generate a lot of interest and will raise lots of money, which we will be sure to put to good use. This is an amazing donation, and we greatly appreciate Robyn's generosity.

Some items of Coromandel news from "The Coromandel and Mercury Bay Gazette" August 1, 1962:

"Water Connection Across State Highway 25

"Recently a house service was laid from the council main in Tiki Road to the new property of K Turner", stated the engineer Mr A.O. Anstiss, at the July meeting of the Coromandel County Council.

"Because this involved crossing a State Highway, the council is required to sign an agreement with the National Roads Board for an easement, pay a sum of £3/3/- and an annual rental of a peppercorn amount if called upon to do so.

It is suggested that in future a fixed charge be made for all new water connections. In some cases connections take two men a whole day, and in addition there are material and re-installment costs to be met."

This matter was referred to the works committee.

Scenic Reserves

A suggestion that the two reserves on the Whitianga-Coromandel Road be named Mahikarau and Waiau Falls respectively was made by the Lands and Survey Department, in a letter to the July meeting of

the Coromandel County council. The suggestion was approved by the Council.

Influenza Prevalent

Influenza is prevalent in Coromandel, many people suffering from the complaint in various forms."

The museum is now closed for the winter, and will reopen at Labour Weekend

MUSEUM MONTHLY COMPETITION "Who What Where When"

Please identify this photo and give us as much information as you can. Bring or post your entry to the Information Centre with name and contact details by **Friday 28 August**. All correct entries will go into a draw for a voucher from Coromandel Four Square.

Our June competition was won by Shirleen Notman. The correct answer was, of course, Firlawn House, which was built for Frederick Woollams back in 1871. The first Keltic Fair in Coromandel was held in the grounds of Firlawn House in Coromandel in 1990, when two women from the Culdian Trust decided to organise the fair as a community project. The Keltic Fair, has, of course, gone on to become an annual event.

Good work, and thank you to all who entered the June competition. Good luck to all for this month.



Good fishing on Mussel Farms

The Industry requests that all boaties taking advantage of better fishing inside Coromandel Mussel farms, please:

- Tie up to the farm and never anchor
- Do not run over any farm structures or ropes
- Do not tie up to and move off any line being worked by a farm vessel
- Always discharge any sewage more than 500m away from the farm



James Drainage '97 Ltd

- Bobcats • Skip Bins • Excavators
- Chaindigger • Septic Tank Cleaning

1.5 to 12
Tonnes

1040 Tiki Road,
PO Box 13,
Coromandel

Phone: 866 8308

Fax: 866 7595

Mob: 021 726 850

jamesdrainage@xtra.co.nz

Steelcraft Ltd

Precision and general
engineering

Steve Norris
Paul Baylis
75 Wharf Rd
Coromandel
Phn/Fax 866 7710

Richardsons

Real Estate Ltd
mreinz

Licensed under the Real Estate Agents Act 2008
Understanding the Coromandel Since 1960

**Come & meet
the team...
Kim, Robyn,
Kelly & Melissa**



EXCLUSIVE
NEW LISTING



"TIDE WATER TOURIST PARK"

- ❖ Well established motel / B & B
- ❖ Positioned at entrance to town
- ❖ Historic Villa as owners residence
- ❖ 4 x 2 brm units; 2 x studio units
- ❖ YHA affiliated hostel sleeping 26
- ❖ 5,691m2 section, plenty of parking
- ❖ Garaging. Come live the lifestyle!
- ❖ **\$1.6m + GST (if any)**

"HOLIDAY OR HOME?!"

- ❖ Very comfortable 2 brm cottage
- ❖ Sunny, private and landscaped
- ❖ Small(ish) cross-lease section
- ❖ Carport with attached laundry
- ❖ Separate lounge; kitchen/dining
- ❖ Heat-pump, good decking area
- ❖ Plan your weekend escapes now
- ❖ Easy walk to town. **\$260,000**



EXCLUSIVE
NEW LISTING



EXCLUSIVE
NEW LISTING



"BEACHFRONT HOLIDAYS!!!"

- ❖ Waterfront setting at Papa-Aroha
- ❖ Immaculate 2brm Lockwood
- ❖ Open-plan living; deck & paving
- ❖ STUNNING Hauraki Gulf views
- ❖ Papa-Aroha Holiday Park setting
- ❖ Occupation via 'Licence to Use'
- ❖ Fishing, kayaking, swimming...
- ❖ Buy now for summer! **\$239,000**

"GLAMPING AT THE BEACH"

- ❖ Great central position within the Papa-Aroha Holiday Park
- ❖ Immaculately presented caravan with attached permanent awning featuring a lounge & double brm
- ❖ 'Licence to Use' occupation
- ❖ Make holidays fun again at an affordable price. **\$140,000**



EXCLUSIVE
NEW LISTING



7 properties **SOLD** last month... another **7** listings urgently needed!
If you are seriously considering the sale of your property, we are open
7 days offering a professional & confidential approach to real estate.



Richardsons

Real
Estate Ltd

Licensed under the Real Estate Agents Act 2008
Understanding the Coromandel Since 1960

In business
for over
55 years

www.richardsons.co.nz

191 Kapanga Road, Coromandel

Ph: 07 866 8900 - Fax: 07 866 8513

Kim 021 533 174, Robyn 021 448 975

Kelly 021 202 6067, Melissa 027 249 8287

Have you reached the age of 55 or over and thought about down sizing from the large family home to a more relaxed way of living? The **Coromandel Senior Settlement Village** offers a wonderful lifestyle, allowing you plenty of time to garden and/or to join the many local clubs and organisations. We have 4 excellent homes within the village, each offering 2 brms, an internal access garage and living areas to capture a northerly aspect. We welcome you to view these homes... for perhaps your next move?



\$265,000



\$310,000



\$312,000

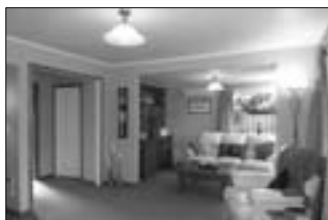


Under Contract

\$315,000



... a true haven for travellers – "the Greenhouse B & B" combining home & income! 4 brms (3 en-suites), 5th brm /office, 2 lounges & dble garage. Immaculate. **\$640,000**



A great price for a great section! 470m2 within the Greenhills subd. **\$130,000**



NEW LISTING

First home or rental! 2brms, open-plan living, garage, 767m2 section. **\$295,000**



Can you seriously go past the price! 3brms, carport, 881m2 section. **\$280,000**



Wyuna Bay waterfront! What a location, 2-3 brms, large section. **\$825,000**

Richardsons will be attending the Auckland Home Show!
~ 9th - 13th September ~
Our spring campaign has already begun. Sales are strong... the time is right to list your property with us!



Greenhills Subdivision stage 2 sections available... you choose. From **\$140,000**



Beach home near the beach (Long Bay). 2 brms, garage, decking, parking. **\$430,000**

We are very proud to continue our "**Giving Back**" programme in support of local community organisations. Recent sponsorships and/or donations have been presented to the Coromandel Rugby Club; Kiwi Can and; our collaboration with the Coromandel Tennis Club.



Sponsored



Donation



Sponsored

Coromandel Budget Advisory Service

By the Budget Team

Our newly trained Adviser, Robynne, is now beginning her probationary period at the Budget Office and is ready to take on new clients. We are all delighted to welcome her as part of our small team and are confident that she will make a huge contribution to our service. Sometimes we feel that we have to remind people that we are only "advisers": we can't wave a magic wand and make problems dissolve and disappear. However what we can do is sit down and bring a fresh perspective to whatever is going on and make some suggestions based on the information we are given about the incoming and outgoings of the household. Our training allows us to create budgets and cashflows which can help highlight problem areas and specifically the dangerous times of year which have to be prepared for.

The other way we can help is by the provision of Food Parcels through the Foodbank. As an independent body under the Budget umbrella, it has to be financed on its own behalf, and that is why this year we are running a new fund-raiser. You may have read a bit about it last month but here again is the story:

It was a long hot summer for the waiters of Coromandel...and they feel it's time they got their own back, so.....Coromandel Foodbank is presenting:

The Waiters' Revenge

This will be a hilarious evening involving you, the customers, and well known Coromandel waiters at their most impertinent, discourteous and graceless. All, of course, in the best possible good humour and taste.

When? **Saturday 8 August** from 6pm at Coromandel Area School Hall (first course served at 7pm). We would suggest you get your mates along and book a table of 10.

What? Your ticket gets you: a two course dinner (vegetarian option available); a complimentary drink on arrival with a cash bar available; entertainment and prizes; and music and dancing till late. All for \$50! Do remember – all profits will go your town Foodbank.

And of course the best thing of all special attention from your vituperative, opprobrious, traducing, contumelious, invective waiters.

Tickets on sale now at the Coromandel Town Information Centre.

The Budget Service is an incorporated society belonging to the New Zealand Federation of Family Budget Services. If you wish to make an appointment, the Budget phone number is (07) 866 8351 where you can talk to Anna, Caro, Leigh, John or Robynne. The office at 950 Rings Road is open Monday to Friday 11.00am - 2.00 pm and other times by appointment. The Budget cell phone number is 022 018 0849 – we reply to texts and messages during office hours.

Calling all crafts people

Colville Market Day – 19 September (Suffrage Day) – at the Colville Hall – 10am – 2pm

Come and visit Colville and check out the market. Everyone is welcome – the butcher, the baker, the candlestick maker, knitting, sewing, weaving, painting, jewellery, books, kids stuff, fresh produce from your garden – surprise us all with your inventive style.

All sellers from near and far are welcome, the more variety the better. If you know anyone who might be interested in being a seller please let them know.

A small fee of \$5 will be charged to each seller and that will go to the Colville Hall Committee to help towards maintenance and repairs at the hall.

Anyone wishing to be a stall holder, please contact Lena (07) 866 6687. All enquiries welcome

Coromandel Embroiderers Guild

By Diann Cade

This month we have a visiting tutor, Robyn Hart, to take our workshop. Robyn is the 2015 Regional Tutor facilitating various workshops from June of this year. Coromandel chose the "Stable Bag" for which students select their own fabric and threads. Each will develop a design from the chosen fabric to embroider on the front panel of the bag. The workshop is suitable for all levels of embroiderers.

Robyn has been an embroiderer for about 20 years and enjoys all types of embroidery, tutoring to beginners, child embroiderers and advanced adult embroiderers.

Our members take this opportunity to learn from another passionate embroiderer, eager to enhance their own knowledge and techniques.

For further information about the Coromandel Embroiderers Guild contact our President Jill Wilson (07) 866 7484



**Papa Aroha
Engineering**
LIMITED

**Now servicing all makes & models of
Lawnmowers,
Ride-on Mowers,
Chainsaws and Sharpening,
Gen Sets,
all Small Engines,
Boat Tractors
and Quad bikes**



Light Engineering & Machining

MIKE McCALL • 07 866 8469 • 027 223 7919

**1060 Colville Road, Coromandel
Email: mikepapeng@gmail.com**



**Castle Rock Cafe
SH25 Te Rerenga
Phone: 07 866 4542**

**Follow us on
Facebook for our
great specials.**

*Amazing food, great
service and value for
money. We have it all!*

NEW OPENING HOURS

Thursday 10am-4pm

Friday and Saturday
10am-late

Sunday 9am-4pm

(Closed Monday and
Tuesdays)

Thursday 13th August

6 Course Designation
Dinner with Lake Chalice
wines – \$95 per person

Saturday 22nd August

French Night – \$35 per
person includes free drink

Thursday 27th August

Quiz night

Bookings essential.

Planting of Pohutukawas

By Debbie Morgan

On Tuesday 23 June planting of new “Maori Princess” Pohutukawas started up Rings Road. Others are going up Watt Street and Victoria Street.

Sue Wright explained that the planting of these four and a half year old trees came about after she went to a community board meeting to ask if there was any funding available to replace dying Kowhai trees in Rings Road. Sue said she would like to sponsor a tree, but would like help from the community board for other trees. Brenda Kelsey and Karen McMillian were also at the same community board meeting, and afterwards said to Sue that they would put it to Business Association members and see if any members would also like to sponsor a tree. Sue would like to thank Brenda and Karen and the Business Association as, without their support, we wouldn't have extra trees up the street.

In all 22 trees are being planted thanks to these sponsors: Sue Wright, Brenda Kelsey, Jane Bartrom, Jane Warren, Richardsons Real Estate, Harcourts, Wyuna Studios, Mussel Barge Snapper Safaris, Star and Garter, Ray Morley, Coralie and Jim Davies, Kaye Rabarts, Christine Doe, Tara Homan, Peter James, Coromandel Accommodation Solutions.

Those who had sponsored a tree were invited along to celebrate the planting (see photo).



Library News

By Raewyn McKinney

I hope everyone has been enjoying the new heaters in the library, and that visiting the library has been a more pleasant experience lately. The new floor coverings are to be laid this month. We will ensure this work is done as quickly and efficiently as possible, with the minimum of disruption to our regular library hours.

Do feel free to come in and check out our new décor; and while you are there, check out our books on offer. We are proud of our range of good quality, recently published general fiction and there is no extra charge for reading the latest releases.

We have recently purchased new copies of the “Asterix” and “Tintin” books for our younger members; we hope to eventually have complete series of these popular books.

The Annual General Meeting for the Coromandel Community Library will be held at 1.30 pm on **Thursday 13 August** at the library. All interested people are welcome to attend.

We are sorry to accept the resignation from our committee of Mary Hickman. Mary has been involved with the library for many years, and has made a huge contribution, as treasurer, committee member, and member of the Deirdre Airey sub-committee. Mary left the library accounts in such good order it was straightforward for the new treasurer to take over. She has also worked on cataloging our books; updating our database and the card system. Once again, she leaves a great system, which makes things easier for whoever takes over this task. We thank Mary very much for all her great work over the years, and are pleased she is continuing as a stand-by librarian.

Library Hours are: 10am to 1pm on Monday, Tuesday and Thursday; 10am to 4pm on Wednesday and Friday; and 10am to 12 noon Saturday

Te Ahi Kaa Social Services

By Jacquie Hamon

He aha te mea nui o te Ao? He Tangata! He Tangata! He Tangata!
Nga mihi nui ki a koutou.

Well here we are mid-way through winter. And what a winter it's been. Snow, frosts, floods and coughs, colds, and flu everywhere.

In weather like this it is difficult to keep homes warm and dry without expending a lot of money, either on power, or the buying of wood.

We welcome the news that the Government is at last bringing in laws to ensure rental properties are insulated. We do not agree that some properties are to be exempt. In this town alone we know of people renting properties that are both cold and damp. It is a costly business heating such buildings and consequently they try their best to wrap up from the cold in layers of clothes and blankets. It is well publicised, but we add our voice in support, that sickness is a direct result of living in such conditions and children are the first to suffer. And in order to heat the home something has to be cut back, usually food. The Budgeting Service is the first line, the middle line, and the last line of defence for people who are under pressure, at any time of the year, but winter is a particularly dreadful time for survival.

So remember them at Budgeting Service, and if you can, give a little. It will be made to go a long way.

We are providers of whanau/family focused services that promote the welfare and safety of tamariki/children, offer counselling services for whanau/family and individuals, and deliver programmes and wananga that support whanau/families. Call in to chat or make an appointment at Tiki House, 45 Tiki Road Mon – Fri, 9am-3pm, phone (07) 866 8558, email takss@extra.co.nz



“It was a long hot summer for the waiters of Coromandel...
and now they're going to get their own back...”

Coromandel Foodbank presents... The Waiters' Revenge

Saturday 8 August - 6pm

Coromandel Area School Hall
First course served at 7pm

Book a table of 10

Get your mates along and enjoy Coromandel waiters at their most impertinent!!

Tickets at Coromandel i-Site

What does your ticket get you?

- Two course dinner (vegetarian option available)
- Complimentary drink on arrival and then it's cash bar
- Entertainment and prizes
- Music and dancing till late

All for \$50

Profits go to your town Foodbank.

Coromandel Independent Living Trust

Education & Training Centre

Office hours: 9.30am - 3pm

Mondays-Thursdays

our website: www.cilt.org.nz

contact: Patricia Mikaere or Vanessa Graham

phone: 07-866-7050

visit: Education Training Centre (ETC),
90 Tiki Road, Coromandel

email: ace@cilt.org.nz

**The delivery of all advertised courses are
subject to enrolment numbers.**

August Courses

Weaving with Harakeke

Learn the skills and techniques to weave simple and basic articles with flax (harakeke). Take advantage of this opportunity to learn from one of our highly skilled weavers.

Tutor: Briar van Dort

Venue: ETC – 90 Tiki Road

Start date: 4 August 2015

Day/Times: Tuesday 10am-3pm
(1hr lunch break)

Duration: 4 weeks

Cost: \$20

Xero Online Accounting

Manage your own finances and accounts by learning to use this highly recommended online accounting software.

Tutor: Jo Scott

Venue: ETC – 90 Tiki Road

Start Date: 6 August 2015

Times: Thursdays 10am-12pm

Duration: 3 weeks

Cost: \$15

LCQ – Liquor Control Qualification

Gain or renew this ever important qualification to serve alcoholic beverages in our local cafés, restaurants and bars.

Provider: WINTEC

Venue: Thames Campus

Date: Thursday 13 August 2015

Time: 9am – 3pm (one day only)

Cost: \$150

Food Safety Handling Certificate

Gain or refresh this ever important certificate that will enable you to serve food in our local cafés, restaurants and bars.

Provider: WINTEC

Venue: Thames Campus

Date: Monday 31 August 2015

Tuesday 1 September 2015

Time: 9am – 3pm (2 days)

Cost: \$150

September Courses

Web Design

Design, create and publish your own website. This course will introduce you to HTML and web authorising software: KomPozer, Photo Shop, Web browsers, CCS and JavaScript.

Tutor: Stephen Hutton

Venue: ETC – 90 Tiki Road

Date: 1 September 2015

Times: Tuesdays 10am - 3pm

Duration: 6 weeks

Cost: \$60

Restricted/Full Driver Licence Preparation

This course will prepare you to sit the test for your restricted or full driver licence. To sit this test you must have held a learner's licence for more than 6 months.

Tutor: Ron Agnew

Venue: ETC – 90 Tiki Road

Date: 3 September 2015

Times: 10am - 3pm

Cost: \$20

Prepare yourselves for our annual ADULT LEARNERS WEEK!!!

Activities will include:

Street Scrabble

Business House Scrabble

Amazing Race

Random Puzzle Drop

Dates: 7-10 September 2015

Visit us at the ETC-90 Tiki Road for more details

First Aid Full Certificate

Become a fully certified first aider. Build the knowledge, skills and confidence you need to deal with emergencies at home and in the workplace. School students over the age of 16 are welcome.

Provider: St John

Venue: St John Station

Date: Tuesday 15 September 2015

Days/Time: 9am – 4pm (1 day)

Cost: \$185

First Aid Refresher

Refresh your current certificate that reinforces the skills and confidence you need to deal with emergencies at home and in the workplace. Your current certificate must be not be older than 2 years -3 months.

Provider: St. John

Venue: St. John Station

Date: Wednesday 16 September 2015

Time: 9am – 4pm (1 day)

Cost: \$105

Learner Driver Licence Preparation

This course will prepare you to sit the test for your learner driver licence. To sit this test you must be at least 16 years old. This course is highly recommended for high school students.

Tutor: Ron Agnew

Venue: ETC – 90 Tiki Road

Date: 30 September 2015

Times: 9am - 3pm

Cost: \$10

**The delivery of these courses are
subject to enrolment numbers.
Please register your interest with
with us now – we are nearly there**

Small Engines

Gain the much-needed knowledge on how a small engine works; how to repair and maintain it.

Day Skippers Certificate

Skipper your vessel with confidence and knowledge of the regulation boat safety practices.

VHF Radio Operations

Learn how to operate a VHF radio from your vessel to call rescue services so you, your family and friends may have a safe and enjoyable time out on the water.

Electronic Music Production

Take advantage of this rare opportunity to learn DJ skills: operate a sound board, to mix sounds and create music electronically.

Apple Mac Software

Learn how to make full use of your i-phone or tablet like our young folk. Understand the properties and uses of your electronic devices.

**Learn for Today and for Tomorrow
E ako mā tēnei rā me āpōpō**





Coromandel Independent Living Trust (CILT) Resource Centre

By Rebecca Leaker, Resource Centre Co-ordinator

The Resource Centre provides the following great services:

- Transport funding and volunteer drivers for holders of Community Services Cards to attend hospital appointments in Thames or Hamilton
- The weekly mobility van to Thames every Thursday, call or come in to book a seat before 1pm on Wednesday's. \$12 koha for adults and \$6 for children for a return trip
- IRD are next in Coromandel Town on 19 August and Maori Land Court on 24 September. Call or come into the Resource Centre to book an appointment.
- Two fast computers free for locals to use between 9am and 3pm
- Lots of info on health, disability and community services

- Photocopier, printer, scanner, laminator and fax for public use

Ways CILT helps our Coromandel community

- providing Adult & Community Education Programmes;
- providing the nationally-acclaimed Foundation for Youth Development Kiwi Can Programme to over 200 students on the Peninsula;
- providing day programmes for disadvantaged people and those with a disability at the Work Co-op in Wharf Road;
- providing community support services such as the Incredible Years parenting programme, Strengthening Families, Tautoko Tamariki & Whanau Ora Navigator programmes;
- supporting the Moehau Kaumatua Roopu;
- being a registered community housing provider and finding ways to provide more social housing in the Upper Peninsula (in addition to the 14 units already in Coromandel);
- providing a community transport service to help patients get to their hospital appointments and get people to Thames for shopping;

- providing a Heartlands resource centre with computers available for residents' use & rooms available for meetings with

outside agencies;

- providing video conference equipment for residents to use;
- managing the Coromandel Refuse Transfer Station & gaining funding to build a Community Resource Recovery (ReUse) Centre on the same site; and
- providing part-time employment for over 30 local employees - many who have a disability.

Ways the community can help CILT

- By purchasing cleaning products online from Able Products. CILT receives a 5% commission. Go to www.ableproducts.co.nz & nominate Coromandel Independent Living Trust at the checkout.
- Sign up to Tiny Mighty Power for your power supply. They will donate \$50 to CILT or FYD Coromandel Kiwi Can (you choose) for every new connection and \$10 if the connection continues every year.
- Go to www.fyd.org.nz and click on the donate button. Make sure you select to donate to the Coromandel region.
- Contact Rebecca at Tiki House to sign up as a volunteer - we have lots of jobs to do!
- Contact Rebecca if you want to help in some other way.

Contact: Rebecca Leaker (Resource Centre Coordinator). Tiki House, 45 Tiki Road.
Hours: 9am-3pm Monday-Thursday Ph/Fax: 07 866 8358. Email: cilt@cilt.org.nz or
Website: www.cilt.org.nz

Challenge to go vegan for a month

By Deborah Hide-Bayne, author of local cookery book, *Coromandel Flavour: A Year of Cooking at the Bach*

I have been challenged to go vegan for a month as part of a health experiment.... oh no!

As a committed "meatarian" I am worried about how to get enough protein, complexity and flavour in my food.

So I have been researching what are the best high protein vegan foods and I am aiming to eat a wide variety of unrefined grains, legumes, seeds, nuts, and vegetables throughout each day.

Here's my list of key ingredients

Quinoa; pumpkin seeds; beans (kidney beans, lentils, chickpeas, peas, black-eyes, lima beans); tofu, tempeh; nuts (peanuts, almonds, walnuts, pistachios, cashews); seeds (hemp, flax, sunflower); vegetables (broccoli, spinach); bagels, spaghetti, wholewheat bread, and bulgar wheat (which also contain amounts of protein).

And here's some recipe ideas to kick-start my challenge:

Lunch ideas

- Baked potato (with sun-dried tomato pesto) and salad
- Steamed veggies with tamari-roasted nuts and seeds
- Baked beans on toast
- Hummus and crackers
- Salad sandwiches

Dinner ideas

- Tofu and Vegetable Stir-fry (tofu, broccoli, onion, red pepper stir-fried with Asian flavours and served with noodles)
- Vegetable meatballs (wilted greens finely chopped with cooked onion, cumin seeds, breadcrumbs, formed into balls and shallow-fried served with tomato sauce and spaghetti)
- Mexican beans and cornchips
- Vegetable curry with rice
- Vegetable lasagne (using cashew nuts blended with water and mustard to form a "white sauce")
- Nut loaf
- Pasta and tomato sauce
- Vegetarian pizza (with no cheese)

Please email me your ideas too... I would love to get them :o) Wish me well on my food challenge and see you next month, Deborah

More info at www.coromandelflavour.co.nz

STAR AND GARTER HOTEL

TO OUR VALUED PATRONS

**We cordially advise that the Star and Garter
will be closing from the 20th July and
re-opening 20th August 2015.**

**We apologise for any
inconvenience this may cause.**

**Your Hosts
Brian and Karen**



**Star and Garter Hotel,
5 Kapanga Road, Coromandel
Phone 07 866 8160**

Heart Beat – St John Ambulance Coromandel/Colville

By Felix O'Carroll – Station Manager Coromandel.

We have experienced some of the coldest nights for some time with snow and icy winds along with cold rainy periods shifting north. Frosty mornings with ice over vehicles and roads hasn't helped but should now start to see warmer periods with daylight hours increasing moving into spring and summer.

The weather hasn't affected our callouts with numbers similar to last year, however we needed to use the Westpac helicopter nine times, a huge increase against the same period last year.

Sad loss to one of our own

It is with great sadness that we lost one of our staff members during the period just gone, Robert Shepard (Shep) was one of our regular night shift volunteer officers and also a member of the Coromandel Fire Brigade.

Shep joined up as a volunteer ambulance officer four years ago and during that time progressed through the ranks to become a First Responder. Shep was also involved in a number of

in-house station projects mainly to do with Health and Safety and Recruitment. His passing has left a huge hole in our staff ranks and particularly on night shift where he was always filling gaps when the need arose.

Our thoughts are with Shep's family, friends and Coromandel Fire Brigade, a sad loss for all.

Stolen Gas cylinders

In our last write-up we mentioned the stolen gas cylinders taken from our station, to date no news on who the culprits were. When this news went out, a local resident Isobel Grant was so upset about these going missing she donated \$200 to St John to help us pay for the costs of these cylinders, as they belonged to St John and not hired. We are very thankful for her support and would like to publicly express our thanks to her.

Training

Members of the public are invited to our station training sessions, which take place every Thursday 7pm. This session covers all facets of ambulance work and gives people an insight to what training is involved to be an ambulance volunteer. (Note: this is an open invitation, all welcome)

Recruitment

With summer and the busy season not too far away we are currently recruiting for more volunteer ambulance staff to join our fantastic team. If you want to make a positive difference to people's lives then this may be for you.

That's it from us.

Be safe out there, stay well, Felix.

For more enquiries call the station and talk to the duty officer or leave a message on 07 866 8279



Te Korowai Hauora o Hauraki

By Jessica Henson

Te Korowai Hauora o Hauraki Coromandel

is taking enrolments now.

Full GP service Monday to Friday 8.30am to 5pm.

We are pleased to welcome Dr Lauren Roycroft who is working in our Coromandel clinic on Tuesday and Thursday mornings. Lauren will be here until October to assist with the busy winter months, with a more permanent doctor in place from November onwards.

Flu Vaccines still available until the end of August. These are free for over 65's and eligible patients. Ask your nurse today.

We are also offering Jodelle Contraception free to registered patients under 25 years. This form of contraception can last up to 5 years. Speak to your nurse or doctor for more information.

Upcoming Clinics

- Toe Nail Clinic with RN Ruth Wells: **6 August, 3 September, 17 September.**
- Kaiwhakaora (Traditional Māori healing) with Jim Kingi: **13 & 27 August.**
- Ear Health Clinic with Jo Wolfenden: **12 August.**

Please phone (07) 866 8084 for an appointment



Coromandel Contract Bridge Club

By Judy Bronlund

In August we will be playing for the Jackson pairs and then we only have 4 more competitions organised for the year. We play each Monday evening in the St John rooms and visitors are most welcome to join us, as are new members. It would be good if some of our earlier members returned to play with us.

Contact Val 866 8730 or Lyn (07) 866 8858

GaiaDecorators
PAINTING HOMES
ACROSS THE COROMANDEL

The Professional Finish For Every Building
Painting • Specialist Finishes • Wallcovering • Feature Walls • Maintenance

Mark Gaia 021 295 5532 | 07 866 7485
COROMANDEL | gaiadecorators@gmail.com
www.gaiadecorators.co.nz

Residential
Commercial
Free Quotes

Chartered Accountants The Hauraki Taxation Service Limited

The only full-time Accountants in Coromandel Town.
Sue, Sue and Ann look forward to assisting you
with your accounting and taxation needs.

Open Monday-Friday 9am-4pm

COROMANDEL 07 866 8660 THAMES 07 868 9710

Llandem Consulting Engineers

Derek Stewart
C.P.Eng MIPENZ

- Structural
- Civil
- Geotechnical

Ph/Fax: (07) 866 6704
Cell: 027 442 4234

7c Torehina Hts, Waitete Bay

Service with a smile

Owner/Operator: Jane Warren

Phone 07 866 8927 Mobile 021 230 5995
Email jane@coromandelcabs.co.nz
www.coromandelcabs.co.nz

Scott Simpson MP for Coromandel

Winter brings both challenges and opportunities here on the Coromandel Peninsula. Too many of us get a dose of winter flu and for most it can be avoided by getting an annual anti flu vaccination. So I was pleased that this year's programme to provide free vaccinations has been extended through to the end of August. The free vaccinations are available to people aged 65 years and over, pregnant women, people with long term health conditions such as severe asthma, and children under five years who have been hospitalised for a respiratory illness. People with Down Syndrome and those with cochlear implants are also eligible for the vaccine.

For those not eligible for the free vaccine it is also available for purchase from general practices and many pharmacies. It's a small price to pay for flu protection.

I was thrilled that Coromandel Town's second Illume Festival of Light was such a great success. Congratulations to all the organisers and volunteers who made it so. I hope that the festival will continue to grow



each year and provide an ongoing winter highlight for both locals and visitors alike.

Living here on the Coromandel we are all environmentalists and keen to see everyone playing their part in maintaining New Zealand being as clean and green as possible. In recent years farmers have been making huge progress on improving the way they operate to achieve better long term environmental outcomes. A recent survey of New Zealand dairy farmers' environmental investments reveal \$1 billion has been spent on projects such as effluent management, stock exclusion, riparian planting, upgrading systems, investing in technology, retiring land and developing wetlands.

This confirms my view that most farmers understand the balance and their obligations when it comes to increasing production and profit along with environmental responsibilities. The survey shows that farmers made an average spend of \$18,000 a year per farm or \$90,000 per farm over the last five years.

The main investment is going into effluent management and this amounted to 70% of farmers' total expenditure. It's interesting to note that survey respondents spent over \$8 million in the past five years retiring land and developing or preserving wetlands. This all goes to show that there is an increasing high level of accountability in the dairy sector. The sector is confronting a challenging business environment right now

but even so it's reassuring to know farmers are taking their broader environmental responsibilities seriously and with a long term view.

A strong economy provides Kiwi families with new jobs, higher incomes and opportunities to get ahead. Here on the Coromandel we depend very heavily on tourism. Therefore we must be ready to capitalise on growing numbers of independent travellers to New Zealand as this market is set to provide the best growth opportunity.

I'm determined we get our fair share of the projected 420,000 visitors who will stay five days plus days when they visit New Zealand over the next year. These travellers view us as pure and clean, natural, peaceful and pleasant. All these attributes are possessed in our stunning area in abundance.

I can only see positive opportunities ahead for our region and we need to do all we can to make this huge source of visitors welcome. The Illume festival is just one event that assists with that overall objective.

Please never hesitate to make contact with me if I can be of assistance with any matter. For an appointment you can phone my electorate office on 07 868-3529. Email: mpcoromandel@parliament.govt.nz.

Authorised by Scott Simpson MP, 614 Pollen Street, Thames



Trade Certified

**REPAIR - MAINTENANCE - SERVICE
OF SMALL ENGINE EQUIPMENT**

Specialising in

**LAWN 'N' GARDEN POWER PRODUCTS
& LAWN MOWING / GROUNDS CARE**

Service / Repair

Self propelled	Ride-on Mowers
Push mowers	Hedge Trimmers
Line Trimmers	Rotary Hoes
Chainsaws / Sharpens	Generators
Pumps	Blower vacs
Auxiliary Outboards (up to 15hp)	

Coromandel Town - keeping it local !

Shane
021 0238 0347



Paddy
021 662 920

**BUSINESS
FOR SALE**
 Expressions of interest wanted

**COROMANDEL
HANDYMAN SERVICES LTD**
 OVER 15 YEARS IN COROMANDEL

**QUALITY
ASSURED**

**Specialising
in on-site
caravan/awning
maintenance**

Also:

- Interior/exterior building maintenance/renovations
- Bathroom makeovers
- Shower installation
- Fences and decks etc. built/repared
- Super Gold Card discounts

CALL JOHN OR TINA NOW
PHONE/FAX: 866 8203
MOBILE: 027 681 5244 OR 021 055 0525

Harcourts

100% CORO LTD MREINZ

LICENSING NAME
JUNE 2008

100% Coro - 100% Local!

OPEN
7 DAYS!

July Sales..!

SOLD

SOLD

SOLD

SOLD

Tuataewa



Coro Cabana

Privately nestled amongst native bush, this funky set-up is ready & waiting to be your Summer raving haven! Set on 2200m2 with sleeping cabin, utility cabana, long drop, & with glimpses of the ocean!

CO1704

\$220,000

Te Rerenga



A Leisurely Lifestyle

With a 3 bedroom, 2 bathroom, open plan home & attached garage sitting on 1.37 hectares, there is plenty of room for all the family plus some sheep & beef & even the extended rellies.

CO1674

NOW \$415,000

Coromandel



Re-In 'State'

This solidly built 2 bdrm ex State House would be an ideal project! Ideal as a first home, a holiday home or a rental investment - They don't make them like this anymore!

CO1700

\$239,000

Coromandel



Cabin Fever..!

Coro Fever? Gold Fever? Fishing Fever? Your cabin awaits! Perfect size for a weekender, 2 dbl brms, compact open plan living, rear deck & front verandah, single garage, & easy care section.

CO1705

\$295,000

Coromandel



Buffalo Lodge

Sitting on 1.989ha (4.9 acres) this architecturally designed three level home has been built to a very high standard with cedar sarked cathedral style ceilings and walls and native miro flooring.

CO1681

PBN

Coromandel



The Fairways..

Live beside the Golf course! 3 sections, with one adjacent to the 7th tee, these are perfect for Golfers - flat contour, pleasant rural outlook and all within an easy stroll to tee off at your leisure..

CO1687

from \$220,000

Coromandel



Instantly Impressive

Set on 2.4 hectares of native forest with oodles of house & buildings, oozing B&B potential, extensive chattel list, picture perfect scenery. This really is something..

Come take a look for yourself!

CO1629

PBN

100% Coro Ltd MREINZ ~ Licensed Agents REAA 2008

105 Kapanga Road, Coromandel ~ Coromandel 07-866 8260

Sales, Rentals, Management, Advice

Any Queries - Drop in and See our Great Team - Open 7 Days..

Harcourts

100% CORO LTD MEMB

Coromandel



www.coromandelproperty.co.nz CO1706

Downtown...

Downtown's happening - here's another serious development project to pick up, shake off & get underway..

- 2150m² Town Centre Zone site
- 2 titles, full services, 35m Wharf Road frontage
- Resource Consent (til 2019) for major retail & apartments project

Get the benefit of \$hundreds of thousands already invested & help Coromandel keep growing with next the successful downtown development. Enquiries (kept strictly confidential) on pricing and details to..

[Ian \(Ezy\) Kemp](#) 0274 777 900



Kennedy Bay



Bay Bach Bliss

Cute 'gottage' all set up for camping, heaps of room for all your holiday necessities, like boats, tents, family & friends & only a quick tractor trip to launch for all those kingy, snapper & scallops!

CO1654 \$179,000

Illume...

Congratulations to the organisers of this years Illume Festival..!

What a fantastic event this was. We are definitely looking forward to what may be in store for us at next years Festival - bigger & brighter again, we bet!

The team at Harcourts Coromandel thoroughly enjoyed the parts we played...

Jan - MC and on the Organising Committee
Ezy & Nat - 'shamming' it up onstage on Friday night

Ezy lighting the marquee and stage on Saturday night. And of course...

John - our resident expert in big bangs! None of us will forget that spectacular display of fireworks!



Team Harcourts...

Your friendly & professional Harcourts Coromandel Team are here to help you...

We may be part of a huge Global organisation - but here on the Peninsula we're 100% Local!



Ian (Ezy) Kemp
Director
M 0274 777 900
E ian.kemp@harcourts.co.nz



John McCaughan
Sales & Marketing
M 021 212 4423
E john.mccaughan@harcourts.co.nz



Diane Arundel
Property Management
M 0210 315 613
E diane.arundel@harcourts.co.nz



Jan Autumn
Sales & Marketing
M 0274 788 930
E jan.autumn@harcourts.co.nz



Rob Keatley
Sales & Marketing
M 0275 777 424
E rob.keatley@harcourts.co.nz



Natalie Munns
Office Manager
P 07 866 8260
E coromandel@harcourts.co.nz

Visit our Website & enter the property ID to view additional photos & details
www.coromandelproperty.co.nz ~ coromandel@harcourts.co.nz



Coromandel Town Information Centre

By Sandra Wilson



Another beautiful day in paradise: sunny, slightly cool wind, but great for the school holidays. The sunny days have been a big draw card in getting people to visit Coromandel town. They have come up or over for the day or for a few days. Many families around as well, making the most of what our town has to offer.

Enjoying our local walks – Kauri Block, Success Track, Harray Track, Kauri Grove to name a few. We have local town maps showing all the walks available in and around town and further north. So pop in and get a copy next time you are in town.

The InterCity bus goes to and from Hamilton every day, arriving at 11.10am. It departs the Kapanga Road car park at 7.30am and arrives in Thames at 8.40am. There is a connecting service that departs Thames at 9.50am and arrives in Auckland around 11.35am. There is also a connection to Tauranga. The 11.15am bus goes to Whitianga and Thames, arriving at 2.00pm. This connects with the 2.20pm to Auckland, arriving at 4.30pm. This bus does not operate on Saturdays until October.

360 Discovery Ferry operates on Saturday and Sunday only during winter. It departs from Auckland at 8.45am, arrives at Hannaford's Wharf about 10.45am, and then a complimentary shuttle brings you into town. The return trip departs Hannaford's at 4.30pm and the shuttle departs at 4.00pm from the Woollams Ave car park. Cost \$55 per person one way. There is also a shuttle bus to Auckland on Fridays at 1.00pm from the Woollams Ave car park. This shuttle only operates until **18 September 2015**.

Winter will soon be over; take care and keep warm.

Our opening hours are 10am-4pm daily. Phone (07) 866 8598 or 027 521 5560; email: coroinfo@extra.co.nz; website: www.coromandeltown.co.nz.



Tangiaro Kiwi Retreat
Port Charles, Coromandel



Cafe, Restaurant and Bar Operating Hours
Tuesdays, Wednesday & Thursday 10am - 4pm
Friday & Saturday 10am - 7pm
Sunday 10am - 3pm
Happy Hour 4pm - 6pm
Closed on Mondays.
Bookings essential for dinner.

**Relaxcoro
massages
available
onsite**

1299 Port Charles Road
RD 4 Coromandel
Ph 07 866 6614
info@kiwiretreat.co.nz
www.kiwiretreat.co.nz

Darts & Pizza Night
15th August from 5pm

**1 hour north of
Coromandel Town**

**LODGE
ACCOMMODATION
NATURAL
SWIMMING HOLE
WIFI & SJOELBAK**



Ann's Good News, Naturally

Weight Problems?

Commonly, weight problems stem from diet – what you put into your mouth (e.g. calorie input) is greater than exercise – how much you do/don't do (energy output).

Rebound fat gain or difficulty losing weight is often due to poor digestion and liver function, toxic overload, stress levels, hormonal imbalances, etc. These lead to serious chronic illness long term such as cancer, diabetes, arthritis, gout, cholesterol, blood pressure, snoring, chronic fatigue, allergies, eczema, sinus, depression, weak bones, hair loss, cravings etc. They are all preventable!

Let me help you identify the cause of your weight issues and possible state of long term half health. Understand what you can do to improve your chances feeling great and becoming that person you need to be, you should consider an effective and natural treatment plan.

It works! With your compliance, results are guaranteed.

As a Medical Herbalist, Naturopath and Nutritionist, I am trained to understand how the body works, what goes wrong with how it works, and how to heal the body with evidence based, common sense natural medicine. That is, what is actually needed and absorbed by our cells, not rejected and harmful long term.

I am an experience and certified practitioner with many years of clinical experience with many happy clients who have had incredible improvements in their health and well-being.

Live life the way nature intended you to, with the ability to move, (no pain or aches), think (no mood swings or brain fog), function (have daily sweet smelling poos) and live drug free until you die.

More Great News

Breast cancer: This 72 yr old man is already feeling better with taking his special herbal medicine, supplements, changing his diet and giving up all alcohol. Years of radiotherapy and strong medication was taking its toll, and he had not realised how toxic and debilitating his diet had been through it all.

No energy, feeling bloated fat and toxic: This 57 yr old Nanna declined having her grandies for the last school holidays due to her health. These holidays however, great fun was had by all, thanks to her treatment protocol she went through for 2 months with us.

Thyroid Health: Despite her lab test results saying her thyroid hormones were in the normal range, this 64 yr old lady felt so ill and tired, it was advised she take anti-depressants. After just two months on her natural medicine, she can't believe how great she now feels. We are seeing great changes in her other thyroid lab tests. Her husband says she snores no more!

All of the above people had great improvements in their weight.

With the Live Blood Analysis and Cellular Health Analysis, all had improvements in their fat mass, muscle quality, and their cellular age decreased!

Candida and leaky gut was corrected and they could see on the monitor, their blood cells had improved incredibly.

Phone Ann Kerr-Bell today for an appointment or enquiry on 021 046 1647



Natural Medical Centre

The natural alternative for all your health requirements

At Tiki House,
Coromandel.

For appointments,
phone or text: 021 046 1647
or email: annk-b@ps.gen.nz
www.naturalmedicalcentre.co.nz

Ann Kerr-Bell

B.Hlth.Sc. (Comp.Med.)
Adv.Dip.Naturopathy
Adv.Dip.Med.Herb. MNZAMH
Naturopath
Medical Herbalist
Nutritionist
Massage Therapist

Animal Rescue Thames

By Alice and John Parris

Thank mews for the donations of cat food, biscuits and kitten foods. Also the winter blankets to keep our furbabies warm.

Homes – all of Bella's babies have homes, the girl being the last to rehome due to getting her up to weight for her desexing operation.

Rabbit – this little bundle of black fur has grown up and fully eating on his own. He loves the tops of carrots and puha and grass as well as rabbit nuts and other veges. He is approximately three months old and seeks a special home with lots of love and food.

Cats for rehoming – the gorgeous trio of sisters from Coromandel are now seven months old, the farm sisters in tabby coats nine months old, Nomoreaye seven months and Foff five months, all are still waiting for forever homes. The only calls we have had are people who want the little itty-bitty ones which we do not have. We are kind of stuck between a rock and a hard place as the kittens know us, trust us and have only ever known us, visitors get hissed and spat at.

One visitor is a young lady from Canada who is doing veterinary work in Thames, she had met Foff and neutered him, Foff's reaction to this young lady was hackles up, growling and snarling at her, which left us laughing, he obviously knew who stole his crown jewels and he was full determined to let her know she was not welcomed in our home.

This is our first year that these teen kittens have been permitted to remain in the house with us rather than be ousted and put into the outdoor units. They are incredibly playful, loving and our nicest pack of hoons we have had.

The old scenario of rehoming older teen kittens is a major issue for us. Our funds are now dropping into a really bad point, and we will have to do internet fundraising to stop us ending up with over 20 felines in care and no funds. It's not a great feeling. Fundraising takes a huge amount of time and effort so its now about getting funds in to keep the unit running whilst we have animals in our care.

Newbie – this came as a huge shock to us – went out to the farm to pick up some empty bags from there and on wandering round saw all the adults vanishing and in the grass with the sun on it I saw a small tail – so I just grabbed it! Not a bright move – this thing is around seven weeks old and despite its grotty condition it had more than enough spunk and fight to do me some serious damage. Thankfully I found a towel and wrapped that round her and put her into the cage in the car. She is a long hair tabby, very matted and is on antibiotics. We can only work on her coat for a couple of minutes at a time so it's going to be a long time getting her groomed. She is adjusting slowly to handling. This was really the last thing we expected to find after the severe frosts out on the farm. She is very very lucky to be alive.

Wanted – winter bedding, towels, blankets, pillows, cat and kitten food (tinned and biscuits) also most importantly homes for our beautiful felines, our teen kittens will adjust to you and your home, they will need time to adjust, they have it too good here so it will need to be a very special loving home for them to go to purrlease.

Meow furr now.

For all enquiries contact Thames Animal Rescue, 532 Thames Coast Road, RD5, Thames 3575 (07) 868 2907



Monday Walkers

Monday walkers were all smiles, as usual

By Irene Dunn

We've had a good month walking many interesting and beautiful walks – and we have been so lucky with the weather!

We welcome Gill, Jane, Sue and Liz to our group.

One Monday we walked from Matarangi to Kuaotunu, mainly along the beach. The views around the beaches and out to the islands are awesome. Of course the coffee shop was half way so an excuse to stop a while!

We've been up the Castle Rock Road through the pine forest – all up hill but coming down was easy. Not many views up there now as the pine trees are growing.

A guided walk around the Robertson farm on Manaia Hill was good exercise and lots of fun with Glenice – many thanks.

If you would like to join us contact the number below.

Happy walking everyone.

Contact Irene 07 2119 758 (landline)



new builds - alterations
extensions - fencing
decking - insurance work

coromandelconstruction.co.nz

duncan@coromandelconstruction.co.nz
(07)866-7796 021-173-7457

**We now have a solicitor in
Coromandel town every Tuesday**



BRENDA FLAY, SOLICITOR: Travels to Coromandel on Tuesdays.
Please phone the Thames Office (868 8680) for appointments.

PARTNERS: John Jenkison and Hayley Green

Thames Office: 611 Mackay Street, P.O. Box 31, DX GA25514, Thames

Phone: 868 8680 **Fax:** 868 8718 **Email:** pjo@pjolaw.co.nz

Coromandel Office: Tiki House, Tiki Road

Our services:

PLANNING:

PROPERTY:

COMMERCIAL:

Asset protection, estate planning, family trusts and wills

Negotiation and advice on all matters related to the sale and purchase of land, buildings and rural property refinancing. Separations and relationship property

Company formation, sale and purchases of businesses, leases, dispute resolution, employment and related matters.

THAMES

WHITIANGA

COROMANDEL

Mana Update

By Penelope Carroll

Winter is a time for inward journeys – and Mana Retreat is an ideal place to go on one. Throughout August a series of retreats provide opportunities to find your own “path on which to travel”. Two weekend yoga retreats begin the month (the first with Denise Ferguson and the second with Clare Etherton); an inner healing retreat with Leonora (Sacred alchemy of the heart) ends the month; and in between are a Relaxation Special and a week-long inward journey for people with cancer (facilitated by Jasmina Kovacev).

The “realisation of our essential unity” is part of the Mana vision. And it is through journeying inwards that we are able to experience the interconnectedness of all life. Yoga means union or oneness – the union of mind, breath and body. The aim of Yoga is to calm the mind, tune in to the breath, open the heart, and to “realise our essential unity”. Similarly, Leonora’s “embody truth” method helps us experience the inherent “interconnectedness of all life”.

Winter is also a time for warming soups. Below is one of Jacqui Chan’s favourites from the Mana kitchen – Winter Green Soup. It is a quick, vibrant, vitamin-packed brew, she says. “The secret is to blend the soup soon after you add the greens so they retain all their goodness.”

Winter Green Soup

3-4 tbsp ghee or vegetable oil
2 onions, several cloves of garlic, a giant bunch of garden greens (silverbeet, perpetual spinach and/or kale) and large bunch of parsley (all roughly chopped)
2 medium potatoes (grated - these thicken the soup)
3 tbsp fresh turmeric (grated) or 1 tbsp dried turmeric
2 tbsp ground cumin
1 tsp ground chilli
2 cups water
3-4 tbsp miso (or vegetable stock if you don’t have miso on hand)
salt to taste

Heat the ghee or oil and saute the onions and spices. Add the grated potato and two cups of water until cooked. Add the greens and boil for a minute or two. Turn off the heat and add the parsley, garlic and miso. Blend until smooth. Add water to your preferred consistency. Season to taste.

Coromandel Lions

By Lion Lyn



Our annual change of officers dinner, held on 1 July, was without doubt a very enjoyable and entertaining affair made especially so by the attendance of Lion Jock Grant, club president of Whangamata. With much fun and laughter, plus a hint of “serious” our new officers were sworn in (too late to change your minds now!). Congratulations to Lion John, for stepping up as president (07) 866 8068, Lion Mary, treasurer (07) 866 7672 with Lion Jayne staying on as secretary (07) 866 7687. Many thanks to Lions Jill, retiring treasurer of many years, and Bruce, retiring president, and also a big thankyou to Lion Rick, for the many years of service as projects director.

The monthly Lion Rock award went to Lion Mary for always putting her hand up to help and support. Thank you Mary. Two days after our dinner evening was the Illume Festival, where we trialled a different fritter mix. We will definitely be staying with original recipe! As the saying goes “don’t fix it if it ain’t broke”. Thanks to all who supported us that night as that was the beginning of a major fundraiser for St John. Our club project is to raise enough funds to outfit an ambulance with all of the new technological equipment to help our wonderful St John volunteers to more easily access patient history without life threatening delays. Community involvement is essential for this project and will be ongoing until the target of \$21,000 is reached. A big ask for us all, but definitely achievable. All donations and pledges gratefully received!

Thanks also to The Top Pub for allowing us to run raffles on the night of the Illume parade, and to Rick and Sam for traffic control, also to Lion David whose organising skills may earn you the hot seat one day! Cheers to one and all. Till next time – rug up – Spring’s on its way!

Driving Creek Doings No.173

By Barry Brickell

Firstly I would like to express my gratitude to Peter and Lesley Pritchard, leasees of our fine new Four Square ‘supershop’ from Foodstuffs North Island Ltd., for allowing NZ Post to occupy a part of the store. Had they not done this we could have lost our full postal services. As an author and essay writer, I cannot always rely on the electronic media. My utter ineptitude at fully mastering computer technology at my age would have led to me tearing out the mop of hair that is still on me. How many readers of this monthly are able to enjoy writing and receiving hand-written letters these days? They are so very personal and full of character that no email can achieve.

Currently, Jacobs International Consultants are preparing the Business Case for the pier and rail project. It is pleasing to be able to say that the concept is gaining momentum within the tourism industry as well as with the council. If it proceeds, the benefits to the Town and wider community will be immense, not just for us but also for our children and theirs too (see my future vision on pg 5).

Over the quieter winter months, new rails are replacing older rusty ones, an on-going job. Neville Lee, working up the line with Russell Trimmer, are rejuvenating the railway track in preparation for the coming summer, a big job. Our new General Manager John Gurney is as busy as a new brush, sweeping out any cobwebs in our business as an experienced railwayman and engineer. He has offered to put on a picture show of his involvement with narrow-gauge railways in challenging landscapes in the art gallery. Notice of this will be given which will be a chance to meet him.

The incident with the small child falling out of the train has now been covered in the popular media. Investigation has shown that it was no fault with the railway or the driver. We are all so grateful that the child survived and is recovering well.

www.manaretreat.com
retreats, workshops, events

Aug 7-9	Creating Space Yoga w/ Clare Etherton
Aug 12-19	I choose Living Cancer Retreat w/ Jasmina Kovacev
Aug 21-23	Relaxation Special
Aug 27-30	The Sacred Alchemy of the Heart w/ Leonora
Sep 4-7	Journeywoman women’s retreat
Sep 11-13	Yoga with Juliet Forch
Sep 18-20	Dances of Universal Peace Reunion
Sep 25-27	Relaxation Special
Sep 26-27	Spring Sweatlodge w/ Sol Petersen

be@manaretreat.com 07-866-8972

Driving Creek Railway

**Trains depart at 10.15am and 2pm daily
with extra trains at 11.30, 12.45 and 3.15
for 5 or more adults.**

BOOKINGS ADVISABLE – Phone: 07 866 8703
email: railway@drivingcreek.co.nz
www.drivingcreekrailway.co.nz

380 Driving Creek Road, Driving Creek, Coromandel, 3506

New Local Book

By Meghan Hawkes

Dead Cert – stories from Thames, Paeroa and Waihi Cemeteries reveals the tragic, untimely and sometimes inevitable deaths of early settlers in the Thames, Paeroa and Waihi districts.

The stories, which span the mid 1800s-1920s, were uncovered while exploring local cemeteries.

The tales behind the headstones include the consequences of a time with no health and safety safeguards, unregulated mines and unsophisticated medical knowledge. Coupled with the often rugged and isolated geography of the area, life was hard and death never far away.

Stories include those of little Victor Keene, of Komata, who fatally ate noxious tutu berries in 1908; Melbourne Parry, a miner, who pitched down the shaft of the Waihi mine in 1903, to the despair of a jaded coroner; Mabel McWilliams, an 18 year old servant at Karangahake, who got too close to copper fire in 1906; Kate Brown, the paramour of famous Australian bushranger Frank Gardiner, who died a wretched death at Tapu in 1868 and Fred Neave who appeared to “sleep jump” into a drowning death in 1907.

The book was published with the aid of supporters who donated to the Arts Foundation’s crowd funding Boosted project.

I am the author of two previous books – *The Coming Year – A Look back at Thames* and *A Line of Duckboards – More Thames Tales*, and editor of *From Goldmine to Firing Line – The Thames and the Great War 1914- 1918*. My books have been dramatised for the Thames Heritage Festival.

Dead Cert – stories from Thames, Paeroa and Waihi Cemeteries is available from myself, the author at meghawkes25@gmail.com (\$40 + \$5.50 tracked postage NZ wide)



Coromandel Patchwork and Quilters

By Sharon Currie

Lorraine Abernethy's entry for the 'Light Bulb Challenge'

I start off on a sad note. One of our members, Mary Jackson passed away suddenly after a short illness. She will be greatly missed by all of us for her warmth and humour.

We had our Mid winter Christmas lunch on 29 June. All the projects from our “Light Bulb Challenge” were displayed and were voted on. First place went to Lorraine Abernethy, second place to Robyn Dudson and third place to Shirleen Notman. We also had a competition to guess who made each of the items – this was won by Pam Sowden. After a very lovely lunch we were given the president’s challenge for the next year. Not everyone gets involved in these challenges but it is fun to stretch your boundaries and see just what you can do. From now on we will be working on finishing quilts for our end-of-year quilt exhibition and making things for our sales table.

If you would like to join us our details are as follows: Our meetings 1st, 3rd (& 5th) Monday 9.30am-4.00pm, St John Rooms, Tiki Rd, Coromandel. President Margaret Sinclair (07) 866 7104, Secretary Mary Hickman (07) 866 8898

Coromandel - Auckland Ferry



Departs Auckland Pier 4

	M	T	W	T	F	S	S
6 April - 12 April	8.45am	8.45am	-	8.45am	6.00pm	8.45am	8.45am
13 April - 26 April	-	8.45am	-	8.45am	6.00pm	8.45am	8.45am
27 April - 3 May	8.45am	-	-	-	6.00pm*	8.45am	8.45am
4 May - 31 May	-	-	-	-	6.00pm*	8.45am	8.45am
1 June - 7 June	8.45am	-	-	-	6.00pm*	8.45am	8.45am
8 June - 20 Sept	-	-	-	-	6.00pm*	8.45am	8.45am

Departs Waiheke (Orapiu) to Coromandel (approximate times)

	M	T	W	T	F	S	S
6 April - 12 April	9.50am	9.50am	-	9.50am	7.05pm	9.50am	9.50am
13 April - 26 April	-	9.50am	-	9.50am	7.05pm	9.50am	9.50am
27 April - 3 May	9.50am	-	-	-	-	9.50am	9.50am
4 May - 31 May	-	-	-	-	-	9.50am	9.50am
1 June - 7 June	9.50am	-	-	-	-	9.50am	9.50am
8 June - 20 Sept	-	-	-	-	-	9.50am	9.50am

Departs Coromandel: Hannaford's Wharf

	M	T	W	T	F	S	S
6 April - 12 April	4.30pm	3.00pm	-	3.00pm	8.15pm	4.30pm	4.30pm
13 April - 26 April	-	3.00pm	-	3.00pm	8.15pm	4.30pm	4.30pm
27 April - 3 May	4.30pm	-	-	-	1.00pm*	4.30pm	4.30pm
4 May - 31 May	-	-	-	-	1.00pm*	4.30pm	4.30pm
1 June - 7 June	4.30pm	-	-	-	1.00pm*	4.30pm	4.30pm
8 June - 20 Sept	-	-	-	-	1.00pm*	4.30pm	4.30pm

Auckland - Coromandel

	Adult	Child	Family
One way	\$55.00	\$35.00	-
Open return	\$90.00	\$55.00	\$235.00

Waiheke Island (Orapiu) - Coromandel

	Adult	Child	Family
One way	\$35.00	\$22.00	-
Open return	\$60.00	\$35.00	\$155.00

Child definition is 5-15 years inclusive.

Family definition is 2 adults + 2 children.

Please note:

• A Sunday service operates on public holidays.

* A shuttle bus service operates on Fridays from 1st May - 18th Sept 2015

In the event of cancellations 360 Discovery may arrange alternative transport arrangements.

A ferry bus shuttle will transfer you to and from Coromandel Town (Samuel James Reserve car park) and Hannaford's Wharf. There is no additional fare for this service.

Timetables and fares are correct at time of printing. 360 Discovery reserves the right to change fares and departures without notice. Full terms and conditions of travel are available online.

Visit 360discovery.co.nz for more information.

360 DISCOVERY
CRUISES

Rangatahi

CELEBRATING OUR CHILDREN

Coromandel Community Preschool

By Debra Attwood



We are well into winter now and the time is flying by so fast that it will soon be summer again.

We recently celebrated Matariki with our centre hangi which was very well attended. We would like to thank everyone who helped make this such a great success especially Patrick Fraser, Colin McNeil and their helpers for preparing and placing the hangi. It's amazing to have such community spirited guys like you. Neither of you have children attending the preschool and yet you give your time and energy freely. Thank you to Peg and Max McLean for once again allowing us to use your premises and to my awesome team! You are such a dedicated, creative, talented,

supportive and inspirational bunch.

Also thanks to everyone who helped in the supply and preparation of the food. It is always a great experience

for our children to see the processes of laying a hangi and then to be able to eat the beautiful meal with friends and whanau. Our children once again beguiled the appreciative audience with their great singing.

The following weekend was the Illume festival and although the weather was not the best I believe that everyone who came along had a great time and our Taniwha was well received. Although the weather rained on our parade it was fantastic to see the street lined both sides supporting this great event and the fireworks display at the end was definitely worth the wait. Once again thank you to all the parents who braved the weather with their children to help out carrying the float as we lead the parade down the main street.

Since our last report we have celebrated birthdays for Chloe, Kyron P, Ruby, Hoani, Natalie, Nina and Kairo and we wish them a very happy birthday. We said farewell to Ivy-Rose, Mila D,

Elijah and Tye W. We welcomed Tearorangi and his whānau to the centre.

We do have some spaces now available in our under twos side so if you are looking for a quality early childhood centre come along and see if this is the right place for you and your child to begin their life long journey of learning. Our over 2's side is still full however you can put your child's name on the waiting list if required.

Check out our latest education review on the website: <http://www.ero.govt.nz/Early-Childhood-School-Reports/Early-Childhood-Reports/Coromandel-Community-Preschool-18-11-2013>

The centre operates Monday – Friday 8.30am 4.00pm. We are situated at 155 Pottery Lane. If you are interested call in for a visit or phone us on (07) 866 7570



Te Rerenga School

Nurturing a community of life-long learners

By Anna Yates



Term 3 has begun at Te Rerenga School and lots of our exciting plans for sustainability education are underway as well as all of our core learning.

We were fortunate to have an old campervan donated during the holidays and we intend to give this an incredible makeover into the most stylish of chicken homes. Our school gardens have been filled, mulched and partially planted. Our new orchard is growing and thriving in its new location and our composting system is running. We are embracing our rural surroundings and our students are excited by the opportunities this will bring us.

As part of our school focus on science education we will be having a science fair at the end of term 3. We are going to focus this on aspects of the material and physical world around us and most importantly, on developing those scientific ways of thinking that help us inquire into this mysterious world we live in. The development of the science capabilities to guide how we learn about science will be a huge focus for us and we can't wait to track our learning journey as we inquire, wonder and think.

Room 3 and 4 had a fantastic day of competition against Coroglen and Whenuakite school at the end of term 2 in the Whenuakite Winter Sports Competition. Our teams played rippa rugby, netball, uni-hockey, football and indoor games and loved every moment. This annual event is coordinated and hosted by Whenuakite School and it is a day of fun as well as a real challenge for some of our students who are less familiar with some of the sports played.

Due to popular student demand we also had a school PJ/onesie day at the end of term. This was just a fun day to stay in PJs/onesies for a day of learning. We look forward to more occasions to dress up later this year when our head students coordinate our annual fun week. PJ/onesie day was certainly great practice.

Paris, Lila, Ellie,
Holly, Eden &
Charlie enjoying
Onesie day



COROMANDEL REFRIGERATION & HEAT

in association with Browns 100% of Thames

**Need whiteware?
Don't leave town!**

**Good prices: Fridges, Freezers, Washing
Machines, Dryers, Dishwashers, Stoves**



Simpson / Electrolux

Heat Pumps

Warm in winter, cool in summer



NEW ZEALAND'S FAVOURITE AIR



**We have mobile chillers for hire
and party ice available**

Get a quote from Milton
435 Kapanga Rd Coromandel
Ph/Fax 8668463
email cororefridge@xtra.co.nz

Kiwi Can

"Kia Ora Tatou Katoa" from the Kiwi Can team.

Last term the Kiwi Can crew finished off the school term with a bit of fundraising.

Our famous Kiwi Can disco was a hit with lots of tamariki, we had students from the surrounding schools attend and having a great time. We would like to thank DJ Massfx for his awesome music and DJ'ing skills.

We also had a presence at the Illume Festival night market selling desserts, chocolate brownie and raffles. I would like to thank my Kiwi Can leaders for all the volunteer time that they contributed to both these events.

We are well into Term 3 and this term our students at our schools are looking at the theme of Resilience. We are learning that resilience means coping with challenges and bouncing back.

We will be exploring Resilience through our sub topics of Understanding Emotions, Self Control/Self Discipline, and Dealing with Challenge.

Our leaders have organised some awesome lessons around these three modules.

Want to help out Kiwi Can Coromandel?

You are now able to donate to the FYD Kiwi Can Coromandel Programme directly through the FYD website... go to www.fyd.org.nz/donate click on Kiwi Can and choose Coromandel as the region and know that your donation, no matter how big or small, is going to our Coromandel Region for our local tamariki and will be invaluable in continuing this worthwhile and much-loved programme. We are still seeking interested parties to sponsor FYD Kiwi Can Coromandel

Sign up to Tiny Mighty Power. Nominate FYD Coromandel and they will donate \$50 to FYD Coromandel Kiwi Can for every new connection and \$12 if the connection continues every year.

Nga mihi nui from Marlene, Jamie, Gemma, Nadia and Natalie.
kiwican@cilt.org.nz

The FYD Coromandel Kiwi Can programme is managed by the Coromandel Independent Living Trust, officially sponsored by Sanford Ltd & supported by The Lion Foundation, the Grassroots Trust, Sky City Community Trust, New Zealand Community Trust (NZCT), Thames Community Board and Driving Creek Railway Ltd, CCST (Colville Community Services Trust).



Jamie-Rose Leckie having fun colouring in with students from Thames South School



Deirdre Airey Literacy Award

By Mary Hickman

Two representatives from the Coromandel Community Library, Mary Hickman and Jim Sharp, made a recent visit to Colville School to present a cheque and certificate to the school as this years recipient of the Deirdre Airey Literacy Award.

The money given has provided the school with the STEPS learning programme.

These courses are highly structured, multi-sensory and suitable for learners of all ages. Excellent for students with reading difficulties and for those who just need more structure and reinforcement.

Learners show an average improvement of 3 years in reading and spelling over a 1 year period of tuition at 1 hour per week. Workbooks actively develop processing skills involved in literacy, including phonological awareness, visual discrimination, visual and auditory memory and tracking.

A few of the students gave us a demonstration on the computers.



Pupils of Colville School with the Deirdre Airey Award Certificate

Coromandel Area School

Equipped For The Future.

E whai ana mō te wā heke mai nei

By Mary Kedzlie



The School Fence

The new fence around the perimeter of the school grounds was funded by the Ministry of Education's Special Education Services due to health and safety requirements for some students in the school with special needs. Some of you may have found the gates very tricky to open as they were installed with two latches. As a result of this three of the gates have been vandalised, and so we have gained permission to remove one of the latches off each gate which will happen when the installers return to school to repair the damaged gates. It is a requirement that the gates are kept shut during school hours, however, the school is going to install locks that will keep the gates open after school and during the weekends for ease of access into the school grounds. The repair of the gates is a cost to the school so we are hopeful that by keeping the gates open outside of school hours it will stop any future vandalism and then, at the same time, mean that the school funds are being used for the education of the children and not for repairs and vandalism.

The school is also very grateful for the PIPS group (Parents in Partnership) for the donation of an extra gate that is to be installed near the caretaker's garages.

Community Involvement

One of the strategic goals for the school is that "Coromandel Area School will reflect the community's aspirations for its children's learning". A survey has been posted to families, along with their children's school report.

The school is also taking the opportunity to have some of the community come into the school for a learning opportunity. We are delighted that the Coromandel Senior Net will be using a classroom for their ICT learning, and that some of our students will be working with them teaching them various ICT skills.

Coromandel Adventures Driver Guides – Are you passionate about The Coromandel? Does the idea of meeting new people and helping us ensure their experience on the Coromandel is something they'll treasure appeal to you? Do you have a clean Full Driver's Licence and pride yourself on being a safe and reliable driver? You either have a P Endorsement, Class 2 licence, current first aid certificate – or are keen to undertake the required training. You may even have a special interest in local history, ecology, geology, outdoor pursuits, travel or photography. We are looking for team players who enjoy meeting people, who are energetic, motivated to learn, committed to excellence and would like to join our dynamic company on a casual or part time/fixed term basis.

International hosts – Do you have fluent conversational skills in any of the following: Mandarin, Spanish, French, Korean, German, Japanese or Italian? We are looking for people who would like to join our team on an occasional casual basis to accompany tours when required as a translator for our international visitors.

Please email your CV, copy of your Driver's License, and letter of interest outlining what makes you a great fit for either of these roles to info@coromandeladventures.co.nz

Applications close 9th Aug at 5pm.



Arts

Art Group

By Lindsay Nicholls

We seem to be in the swing of winter with new members coming, tutors each month and working on our group project for this year.

We would like to welcome to our group Sue, Tiana, Jill and Kay. Already we can see you learning and taking in the information you have received. May you continue to enjoy and expand your knowledge and skills through our group. So sorry to anyone else who was thinking of joining as once again we are full, but I did warn you in the last notice. Feel free to contact us to put name on a waiting list.

We recently held our Vaughan Udall workshop. What a great day. Thanks to all who came – everyone enjoyed it. Out topic “outside in” was very challenging for some of us... me included. I could not find a picture to capture this topic until the night before our session. With apprehension I showed them my potential one and was pleasantly surprised at the reaction. So I started it and was delighted with the result. The range of pictures at the end of session was amazing. Each one showed the understanding and the new technique Vaughan showed us, very different to how most of us start a painting. Thanks Vaughan! Our next tutor is Peter Nicholson, known in Whitianga region for his marine and murals on local history. We are going for watercolours on this day.

Arty cheers.

Contact Val Gray, President (07) 866 8911



Shirley, Linda and Ruth – who is swearing, who is sleeping and who is actually listening?

Coromandel Writers group

By Marni MacDonald

We met at Sue and Wally Gilmer's home on our regular 2nd Thursday of the month.

A cold winter's day outside and a roaring fire inside. Our creative juices were soon activated with an exercise involving drawing, writing and passing along. A great warm-up for our spontaneous writing exercise. The lead-in to that were the words “As he rolled over...” No knowing where different writers will take that. Will “he” be a dog, a horse or a human? Will he roll over in a paddock, a bed or on a tumbling mat? The sharing of those stories, each one different, brought feedback and suggestions. Some may be extended now into longer stories or a small part of them magnified.

Our format is to follow the spontaneous writing with a discussion on books we have recently read. Reviews ranged from “rather dull and tedious” to “rush to the library and get it now”.

We shifted into the sun to have lunch and stayed there for the rest of our meeting. Our homework, which had been set at last months meeting, gave us two choices. Both choices were shared and feedback given.

We finished as we had begun, with creativity. Each person wrote down an aspect of a story, the who, what, where and when which has combined to make a rather challenging title for our this months homework. We are to write about “A family in a fairground in a future autumn season”.

That settled, we continued to sit in the sun and simply talk about writing with no fixed agenda.

Our next meeting will be on **13 August**. The venue is weather dependent. At Jane's if it is sunny. To be advised if it is wet (ring Barbara on (07) 866 8299).

Coromandel Music Society

By Martin Edwards

Our next concert is on **14 August** at the Bowling Club starting at 7.30pm when we proudly present Clay, Dove and Shone. Three voices and two guitars with uplifting harmonies and songs, performing a mix of classics from Neil Young, James Taylor, Jackson Brown, Leonard Cohen to Sandy Denny. Having played at festivals, concerts, pubs and cafés all over NZ, they bring a relaxed musical experience that the whole audience can feel part of. It's going to be another great night of music.

Tickets are on sale at the Coromandel Town Information Centre. Doors open 6.50pm, tickets \$20/\$15 concessions.

Coromandel - Colville Art Group

By Christine Lunn

Following on from our article in last month's chronicle we had a number of inquiries from interested people and we have been able to organise several group meetings.

We are now in the planning stages for several projects where we plan to have some more fun developing our skills in the various mediums.

Our meeting room is in Colville and we car pool from Coromandel. We still have room for any interested artists (or budding artists, or first timers) to join us.

We meet on an informal basis until the membership expands to a size where it needs a formal set of rules and officers.

There is an opportunity for participants to exhibit their work on a permanent basis in a small gallery.

Initial contact can be made with Christine Lunn on (07) 866 7220 or mobile 021 484 118, or Sue Hughes on 07 211 9774 or mobile 021 142 1124



COROMANDEL MARINE ENGINEERING

- Outboard service centre
- General engineering
- Aluminium & stainless welding



Telephone
Workshop:
028 2580 2351
Office: **(07) 866 8004**

116,309 Road,
Coromandel,
1km from the main road.



The Lighthouse Studio

Custom Woodworking,
Persian Rugs, Local Art
75 Wharf Road (next to Coro Pies),
down the Green Lane.

Open 10-4 Tue thru Sat (unless we've "Gone Fishing")
Call: 021-038-0923 for a Rendezvous.
www.lighthouse-studio.co.nz



Our Coromandel

News from Thames-Coromandel District Council



AUGUST, 2015

Coromandel Harbour Project

This is a major Council project looking at upgrades to wharfs and boat ramps within Coromandel Harbour to cater to higher visitor numbers and increased use by recreational and commercial interests. Long-term, we're planning for a fast ferry from Auckland which will have economic benefits for the entire Coromandel. The project has two separate strands:

Upgrade of Sugarloaf (Te Kouma) Wharf

- An Information Memorandum is being worked on between our Council and the Coromandel Marine Farm Association (CFMA).
- If that is signed off by Council the CFMA can then start work on a Resource Consent Application.
- There will be on-going consultation with iwi.
- Upgrading the wharf will make operations there safer and defuse conflict between the aquaculture industry and recreational users.

The Inner Harbour Project

- Longer-term look at the Coromandel Wharf site accommodating commercial and aquaculture interests on one side and recreational and ferry users on the other
- The Inner Harbour Project will only proceed with external funding. Expressions of interest will be sought from selected parties to gauge interest in co-funding an Inner Harbour Development. Our preferred choice would be Regional and Central Government stakeholders but we won't rule out commercial partnerships
- We're looking to contribute \$10k to support work on an independent Business Case based on Driving Creek Railway founder and artist Barry Brickell's proposal for a 1.2km pier next to the existing Coromandel Wharf allowing for a railway and ferry system

www.tcdc.govt.nz/coroharbourproject



Coromandel
-Colville
Community
Board
UPDATE

Lighting Furey's Creek Bridge

LED lights have been installed along the Furey's Creek Bridge thanks to a \$3000 donation from Powerco.

The lights come in a variety of colours which can be changed to be event specific i.e. pink for Breast Cancer Awareness Week.

In 2012 Powerco offered a donation towards a community project in Coromandel in recognition of the new 110,000 volt line they installed, delivering on their commitment to lift network performance on the Coromandel.

"Powerco undertook a voting poll of preferred projects and lighting Furey's Creek Bridge received the most support," says Kim Brett, Coromandel-Colville Community Board. "It was an added bonus to see the lights up in time for the Illume festival."

Congratulations

The Coromandel-Colville Community Board would like to congratulate everyone involved in Illume. It was another successful event that the community has got behind yet again.



Over 350,000 Kiwis are ready to ShakeOut for our national earthquake drill at 9.15am, 15 October 2015.

There is less than three months to go until the drill so get that plan in place and tell everyone. We are aiming for 1.5 million participants for New Zealand ShakeOut. Encourage friends, family and colleagues to sign up at www.shakeout.govt.nz

Rates Rebates Clinics

You could be missing out on saving a few hundred dollars by not applying for a rates rebate.

Pick up an application form from our area offices and our Customer Services team at all our area offices are available to help you fill in the forms. Special clinics are being held in Thames every working day of August with members of the rates team joining to help.

You can also download the forms from our website and find out all the other things you need, by going to www.tcdc.govt.nz/ratesrebate and clicking on the links.



YES participants wow emergency services

The Youth in Emergency Services Programme provided a month of learning and new experiences, not only for the eighteen participants, but their Emergency Services mentors.

The YES project was instigated by a visit from the Minister for Civil Defence and Youth, Nikki Kaye, and funded by the Ministry of Youth Development, and Thames-Coromandel was ready for the opportunity to shine.

The programme is designed to strengthen the connection between young people and their communities. "It is easy to be disheartened by how young people are perceived," says Helen Flynn, TVEOA Emergency Management Officer and Project Champion. "But seeing the level of engagement and the passion they showed for what we do was so humbling."

The participants, aged between 16 and 21, spent every Thursday night and Sunday for a month, experiencing the work of key emergency services in the Thames-Coromandel, including Civil Defence, LandSAR, St John and NZ Fire.

"I met and worked with people I didn't know but now get on really well with," said Coromandel participant Ricky Save. "The practical sessions were good as they were close to real life situations so we got a chance to know what each service really does. There was a whole range of skills that we learnt that can be used outside of this course."

All four services collaborated to test what they had learned in a range of emergency scenarios including a declared civil emergency, a motor vehicle accident, and people lost and injured in the bush.

Participants were honoured with a formal graduation and 8 of them have signed up to volunteer for emergency services in the area and 3 undecided about which one they want to volunteer for.

The programme was so successful Mercury Bay and Whangamata are considering hosting a programme early next year. www.tcdc.govt.nz/yes



Get our free eNewsletters!
www.tcdc.govt.nz/subscribe



www.facebook.com/ThamesCoromandelDistrictCouncil

www.coromandel.govt.nz

customer.services@tcdc.govt.nz

Private Bag, 515 Mackay St, Thames

Phone: 07 868 0200

Environmental

Moehau Environment Group

By Natalie Collicott



Ways to fight the cold

We are into the last month of our Kiwi Census. Thankfully most kiwi listens have now been completed, and it is just a few of us that have to brave these chilly wintry nights. Kiwi listening involves sitting in the dark for two hours, counting the number of kiwi calls you hear. Our volunteers are a staunch bunch. Different methods have been trialled to ward off the cold, which inevitably seeps into your bones by the second hour, frost-bite threatening toes and noses, dew freezing to your boots. Seasoned listeners bring along blankets and hot-water bottles, flasks and even a nip of something warming. Others have admitted to solo aerobics to keep their blood circulating.

I have one of the most southern survey sites-close to the Waiau Falls on the 309. Although we know kiwi are present in this area, no kiwi have been heard here during our survey. It is hard not to be discouraged by the number of dogs and possums I heard barking through the night. Kiwi

at these southern sites are not protected by predator control. We know that in areas without protection, our kiwi are disappearing, with 70% of chicks killed by stoats in the wild. It makes me thankful we have so many individuals working to protect kiwi on the Coromandel. Without them, we would not have the thrill of hearing these birds call from our bedroom windows.

Possum control a success

You only have to drive a Coromandel road at night to notice the density of possums. Each night possums are browsing on their favourite plants in our district, stripping kohekohe, rata and pohutukawa (not to mention our precious lemon trees). To give biodiversity a fighting chance, scientists say possums need to be controlled to below 5% residual trap catch rate (less than 5% possums caught for every 100 trap-nights).

We are proud to announce that our Coast to Coast operation has significantly reduced possums and rodents in 1,261ha between Otautu Bay on the west coast and Waikawau Bay on the east. Results from our post-monitor in June show that

possums have been reduced to 1.7% residual trap catch. Even more exciting, given possums were at a scary 31.33% prior to start of the operation.

Baiting was undertaken in April and May this year. Traditionally MEG would use cyanide to target possums. However, reliance on any one method of pest control can lead to 'bait-shy' animals. So this year we chose Cholecalciferol, a peanut butter flavoured bait, highly palatable to possums and rodents. The active ingredient is vitamin D3, which breaks down quickly in the environment. We are thrilled with the result.

Moehau Environment Group is a non-profit volunteer organisation dedicated to the protection and enhancement of the natural environment of the Northern Coromandel. For more info or to get involved please get in touch with Natalie Collicott, MEG Coordinator (07) 866 5337, email natalie@meg.org.nz or go to www.meg.org.nz

Bush Bites

You've all heard of "sound bites", now our MEG trappers want to share some "bush bites"-inspiring encounters with nature they've had while out in the bush.

"I wanted to thank you so much for giving me such an amazing opportunity to volunteer for MEG and to be part of the Kiwi listening Census team! I had so much fun doing it and the combination of kiwi calls and clear night skies with shooting stars made it quite a magical experience.

P.S We really wanted to hear kiwi again on Saturday night, so went to the site for half an hour that night and we heard three calls!"

People Power

By Pete Buddle

It's getting easier to be a kiwi in Coromandel these days (that's the bird, I mean). We all know that if we want kiwi numbers to grow, we need to control predator numbers.

Much of the peninsula north of Coromandel town has active stoat control in place, with traps spaced out regularly over the hills and checked once a month. Much of this is done by volunteers.

Now the controlled area is bigger, after 14 locals spent a Sunday early in June putting stoat traps in place at Papa Aroha. We walked up the back of Papa Aroha, in the Blue Mountain area. A helicopter had dropped the traps in their boxes on the tops, so when we arrived there, we loaded up our packs, carried them along the tracks, and put them in place about every 200m.

Sadly, we heard few birds. This was a reminder that, unless we control the pests in our forests, there will be little for our birds to eat, and few that make it out of the nest alive.

It was quite a climb, through beautiful country, and the barbecue afterwards was extra tasty.

Thanks to the following locals for their hard work that day: Ian Booth, Claire Cannon, Mike Coley, Evan Davies, Steve Garmey, Wally Gilmer, Hugh Graham, Lisa Kearney, Steve Norris, Susan Swan, Kuruho Wereta, Jo Mendonca and Liz Whitwell.

COROMANDEL PLUMBING

(1986) LTD

PO Box 23, 1740 Tiki Road, Coromandel

CRAIG DUDSON

Phone/Fax 866 8814

A/Hrs 866 8837



Plumbing, Drainlaying and Gasfitting

PENINSULA ELECTRICAL SERVICES LTD

Commercial & Domestic Electrical Contractors



RAVINDER & SUE RAJ

Registered Electrical Inspector

1750 S/H 25

P.O. Box 109

Coromandel

Telephone (07) 866 8166

Fax (07) 866 8162

Mobile (0274) 738 734

Free Phone: 0800 4 Electrical (0800 435 328)

E-mail: ravinder@e3.net.nz

JAMES & TURNER 2014 LTD

FISHING • MARINE • TOOLS • SPORTSWEAR
PAINT • HARDWARE • GIFTWARE • GARDENING

OPEN 7 DAYS

GRANT WEBBER

jandt@vodafone.co.nz

Ph: 07 866 8805 Fax: 07 866 8969

PO Box 16, Coromandel 3543

131 Kapanga Rd Coromandel Town

Like us on Facebook - search "James & Turner"



Peninsula Project Update

By John Veysey

DOC's preparation for an aerial 1080 drop is supposed to include "consultation" with all affected land-owners and I suggested that all those affected landowners make sure they receive all possible safety measures. Prior to any 1080 drop the owners of all these properties should be contacted by DOC staff to negotiate placement of buffer safety zones and discuss the need for poison-free drinking water. More than seven hundred of them I'm told. Perhaps a handful of them have had a phone call. The rest are waiting for DOC to call. It's almost August and it doesn't look like DOC is going to come a-calling.

DOC tells us they are going to control possums and their monitoring maps were supposed to explain why possum control was needed. These possum monitoring maps represent DOC's only evidence regarding possum numbers in the area and are crucial to DOC's argument that possums need controlling. I received a copy of one of those

maps courtesy of the drop-manager.

DOC had used a revolutionary new possum-monitoring technique developed by Bruce Warburton. The method measures "relative abundance". You take a figure one year and compare it with another figure taken a year later. We'll have to wait until DOC takes another monitoring figure a year later before the idea of "relative" abundance will make any sense.

In the meantime the map tells us much more than just possum numbers. The revolutionary monitoring technique demands the trapping of possums in small, but distinctly separate plots. These plots may be as small as half a hectare in area and they may be kilometers apart. DOC's monitors trapped five separate plots.

The map shows an area of green bush with five, randomly selected circles peppering its depths. Inside each of these five separate circles teams of monitors had set up and attended trap-lines – night after night after night. This is the first time DOC has produced trapping figures from deep within any of their hitherto "inaccessible" bush; trap lines in all directions, in five separate locations. Here, in DOC's map, is undeniable proof

that all of the poisoned area is accessible to trappers. So why use 1080? And why in August? When all the possums are all in the neighbouring pines! DOC's 1080 drops make no sense at all.

DOC don't seem to be interested in anything but getting the poison dropped. What 1080 is supposed to do, why 1080 is being used, or who and what will be affected by the spread of this 1080 are matters of secondary interest to DOC staff whose sole job is to get this poison dropped.

And here's me concerned that the first thing many people will know about these coming drops is when they see the choppers going back and forth over the hills behind them.

CLAIM AGM

Notice of meeting

We would like to give you notice and invite you to attend the Annual General Meeting of CLAIM (Coromandel Lobby Against Indiscriminate Mining) on **Sunday 6 September** at Hauraki House, Coromandel.

10.30am – coffee/tea and cake, 11am – meeting starts.

New and existing members all most welcome.

Ruby Powell (Chairperson), Kaye Anderson (Secretary)

Coromandel Kiwi Project

By Jeff Williams

This past month the Coromandel Kiwi Project was supported by a group of Year Nine students from Coromandel Area School. Each session was attended by about a dozen students.

On one occasion, the group joined a couple of our local volunteers and walked one of the Kaipawa tracks checking the stoat traps along that track. At each trap, the top was opened and the trap mechanism itself checked for any kill. It was cleaned, tested, reset, and rebaited. Everyone could participate as much as they wanted as the group made their way across the Kaipawa passing traps every 200 metres or so.

Another time, everyone got a taste of the work involved in keeping the tracks open for the trappers to walk. The group spent a couple hours track clearing along another of our trap lines near the Tokatea. Here the students helped cut back the bush that continually encroaches on one of the less travelled tracks.

At a third meeting the weather was too foul to head into the bush so our tyro trappers spent some time talking about our native environment, its unique place in the world, and the importance of protecting the natural biodiversity in our area.

It was great to have the infusion of so much enthusiasm and we hope to see some of the kids back on the trap lines... maybe even dragging their parents along.

The Coromandel Kiwi Project is a group of local volunteers giving their time and energy to the community. Please join or support us! Contact coromandelkiwiproject@meg.org.nz

WANT
NATIVE NURSERY & EDIBLES
WAITAIA RD, KUAOTUNU

A wide range of beautiful natives,
palms and fruit trees.

Potting mix, compost, mulch, chook manure.

Open Thursday- Sunday 9-5 or by phone appointment

Please phone Claire & Colin Hill 07 869 5910

Coromandel Senior Settlement Trust

Donations Programme 2015/2016

As in previous years the Trust has a limited amount of funds available to support groups and organisations involving and assisting Coromandel people, especially, but not exclusively, those of interest to senior citizens.

Applications for donations in 2015/2016 are now invited and will close on **30 September 2015**.

For information on the Trust's guidelines and the application procedures refer to the information booklet obtainable by writing to CSST Donations Programme Coordinator
P O Box 138, Coromandel
or go to our website
www.coroseniortrust.org.nz

Sport

KiwiSport Saturdays

By Jamie-Rose Leckie

KiwiSport Saturdays are for all school aged children, girls and boys living in and around Coromandel. Pick a date, come along, and give it a go. Come and learn some new skills and then put them into practice in a game!

Weekend sports programme in Term 3
Save the dates and spread the word!

1 August – Basketball (court beside rugby club)

8 August – Netball, Manaia Gym

22 August – Soccer, CAS bottom field

29 August – Netball, Manaia Gym

5 September – Tennis, Coro Tennis Club (bring racquet)

12 September – Basketball (court beside rugby club)

19 September – Netball, Manaia Gym.
Cost: free

Age: all school aged children, boys and girls.
Bring: suitable clothing and footwear for active participation and a drink bottle.

Time: 9-10am (if raining it will be cancelled).

There will be no weekend sport during the school holidays.

Term 4: after school touch programme starting **Thursday 15 October** 4pm at CAS fields.

Coro Gym

By Peg McLean

Hi everyone, did you enjoy Illume? What an amazing event for Coromandel to host, and what a huge success it was. Well done to everyone involved. Just a note here though. If there was anything that you feel we did not quite get right overall, please let someone know, even if it is me, so we can do better next year. Remember, we still have so much more to learn (floundering around in the dark so to speak) and with your help we can improve next year.

A big thank you to the following businesses who helped us with “Frozen Zone” for the kids. We could not do this without you: James and Turner, Harcourt, Mussel Kitchen, Tui Lodge, Chris Blyth, James Drainage, Judy Bronlund, Robyn Dudson and Tracey Edkins, Crazy Horse Productions, Girls In Tune, The Ice Man and special guests Elsa, Anna and Olaf. To all the parents, friends and family that worked their butts off to put on a great show. I for one would like to say well done, you all succeeded big time in spite of the rain.

Now back to the exercise program. We still run Sit and Be Fit on Mondays and Wednesday. This is for people who are having trouble with stiffness, hip/ joint movement or just want to keep moving and have a laugh. Winter is here and this is the hardest time of the year to leave a warm home but it is so rewarding when summer comes and you have the strength and energy to enjoy the beach, fishing and everything else that goes with summer

Our 8am Monday, Wednesday and Friday class of step aerobics is still on and what a way to warm up on a frosty freezing morning. Christa-Jo’s Kick Fit is on at 5.30pm, Monday only. Watch this space as we may have something special happening on Thursday. Pump is on at 5.30pm Wednesday even though numbers are down a bit because of netball. It is still on.

Boot camp is still going strong with Travelling Personal Trainer Catherine Stevens. Monday Wednesday and Friday at 6am. Come as a casual or ring her cell 022 013 0786 for more information.

That’s me for now,

Cheers Peg

Coromandel Golf Club

By Peter Gray



The winter months provide a quiet period for both men and ladies club, inter-club and zone competitions.

The Ladies have played round four of the Thames Valley Match Play competition with the fourth round being played in very cold conditions at Purangi. The team comprising Glenise Robertson, Gina Carr and Marilyn McKenzie, is placed mid-field with Gina winning both of her matches. The next round is to be played at Te Aroha on Monday 20 July.

At home the Ladies played their Nine Hole Foursomes which was won for the second year running by the pairing of Christina Page and Glenise Robertson.

The Men are currently contesting the Neilsen Cup (best 2 of 3 Rounds Stableford). The third round was postponed due to weather and is to be played at a TBA date. After round two, Malcolm Stone 71Pts & Mark Burcombe 70Pts lead the competition with Tony Edgar, Graeme McGowan, and Kevin Verner all with a one-round score that they could build on to challenge the current leaders.

The Meat Pack / Laurie Olliff Trophy for June was won by Craig

Dudson 43Pts from Kevin Verner 42Pts, Graeme McGowan, Malcolm Stone, David Lunn 39, Jim Davis, Paul Kasper 37pts.

Story goes that that Craig was so pleased with his one point win over Kevin that Kevin left town for a week only to return to realise he need another week – so got out of town again!

Saturday 22 August is the annual mixed Daffodil Day in support of the Cancer Society. This mixed event continues to be one of the most popular events on the Club’s Calendar with all proceeds going to the Cancer Society.

Reminder

Saturday 1 August – Captains Trophy.

Saturday 8, 15, 29 August – Rds 1,2,3 Golconda Cup.

Saturday 22 August – Daffodil Day (Mixed) (P).

Wednesday 26 August – Meat Pack / Laurie Olliff Trophy.

Coromandel Fishing Club

By Lindsay Nicholls

The club would like to thank all those outgoing members who have served the club well. Without the contributions of everyone, be it a small task or large, the club would not survive. Everyone can only put in what they can manage but it all adds up at the end of the day.

The new members to join the committee ... a big welcome to Rex, Max and Bill and Liz.

Fish of the month for August is Parore and the weigh stations are still the same. No one weighed in last months fish. We hope to get signage for Vals and Max’s weigh station area. The club is looking at moving forward with setting up a facebook page and a club email.

Fees have remained the same as last season: Family of 2 adults and up to 2 kids 13 and under (as at 1 July 2015) – \$75; Senior members – \$40; child 13 and under (as at 1 July 2015) – \$15.

Fees can now be paid at Fish and Dive or Wyuna Studios. Internet banking is available. Pop into Wyuna for account details or give them a ring. We have a raffle roster going. Want to help but not be on the committee? Maybe you could sell raffles at Admirals Arms once every eight weeks for an hour or so. If so, contact Chris at Wyuna Studios..

As I am stepping out as secretary am I wish the club and my replacement well.



COROMANDEL.N.Z

866 8635

See meeting list for class times

Coromandel Bowling Club

By Martin Edwards

As you will know member Mary Jackson recently passed away. She was always so full of life and joy, which she always brought to the club and to every game she played. She would often make sure new members were included in her team. She has been a member of the club for 13 years winning several championship titles. A great player and a great person who will be very much missed at our bowling club.

An exciting time at the Bowling Club as we now get on with the practicalities of amalgamating the Bowling Club and the RSA. The RSA's flags and wall mounted memorabilia have to be accommodated in the club rooms to ensure they feel at home and part of the clubrooms. They will have their first Saturday at the Bowling Club on **1 August** at the same time as celebrating a couple of members' birthdays. We are all looking forward to the coming together of our two clubs and the starting of new friendships and cementing old ones.

The bowling green has been carefully prepared for next season which starts in September. The green is looking very good at the moment, the short period of frost promoting the seeding of the starweed. The

renovations have now been completed. I would like to thank the Coromandel Golf Club for loaning their green cutter, and Keith Stephenson for doing it. This machine cuts very thin shallow grooves in the surface which allows the very tiny Starweed seeds to fall into. This is an example of clubs helping each other in Coromandel. Thank you. The green renovations team that have worked very hard were Eamonn, Bruce, Graeme, Ernie and Colin. They put in a lot of hard work so that in September we have a superb green to play on.

The ladies have had some great wins covering the entire Peninsula, first winning the Fours Centre title the Scott-Baker Trophy, players Irene Goss, Vi King, Maureen Kimber and Dianne Burton had this excellent win. Lindsay Nicholls won the Centre Ladies Singles Championship an outstanding achievement, and Irene Goss achieved the Silver Star award. Our men bowlers have been successful too in winning the Centre Men's Fours title, the Clothier Shield

for the third year in a row, just outstanding. The successful bowlers were Miha Mathews, Graeme Goss, Ernie Groucott and Colin Gawith, well done guys

I think the ladies win hands down over the men this year.

Our Clubroom has been very busy recently, with the Garden Circle meetings, Quiz Night, 500 Club, and Film Club. Quiz night is Thursday evening, 500 Club Tuesday afternoon, and Film Club fortnightly on a Wednesday evening. Our clubroom looks very smart now with our new tables and chairs, which people have said are very comfortable.

If you want more information on any of the activities to which you are very welcome to come along or anything to do with the Club, please contact me on (07) 866 8886

Coromandel Croquet Club

By Judy Bronlund

Croquet is played on Tuesday and Saturday mornings and on a Thursday afternoon. The weather has been very kind to us so far this winter but I expect we will be having a few more wet croquet days, so come and make good use of the fine days. Our lawns are beside the bowling green in Woollams Avenue. Visitor and new members are most welcome to join us.

Contact Kaye (07) 866 8968 or Judy (07) 866 8637

Coromandel Gymnastics Club

By Teresa Brownbridge

By the time this Chronicle comes out we will have been back at gymnastics for a couple of weeks. I would like to welcome back all our gymnasts and their families, our wonderful coaches and helpers including our student helpers and the committee that do such a good job behind the scenes.

A big congratulation must be given to all the gymnasts that competed in the Thames Gymsport Festival in July. All gymnasts performed to the best of their ability and it was lovely to see so many familiar faces from the club turn out for their schools in both individual competition and/or the group performances. Thank you also to the coaches from our club that went and volunteered as judges.

A reminder that the Coromandel Gymnastics classes are still as follows:

- Juniors (4-6 years of age) 3.45-4.30pm (Fun, fitness, fundamentals)
- Intermediates 4.45-5.45pm (fun, incentive awards, social competitions, gym skills and Parkour)
- Seniors extension 5.45- 6.15pm (fun, advanced skills, acrobatics, competitions, class by invitation only)

If you have not paid your fees or filled out your membership forms these need to be done urgently. Fees for term 3 were due on the second week of the term.

This term for our two older classes we are concentrating on the NZ Gymsports Incentive Awards Programme with gymnasts being graded within levels 1-4. There is also the possibility of the competition that we went to in 2013 with several Peninsula clubs, held that year at the Whangamata Gymnastics Club, being resurrected again. Our club currently holds the Challenge Trophy for the Highest Points. If this goes ahead we will again be encouraging as many children as possible to compete in this great competition.

Looking forward to another fantastic gymnastics term, see you there.



Pepper Tree

RESTAURANT & BAR

THURSDAY THEME NIGHTS

6th August ~ Mid-Winter Christmas Dinner

13th August ~ Indian

20th August ~ Wine & food matching w Mission Estate, Hawke's Bay

Bookings at Goldiggers 866 8380

27th August ~ Curry

Did you know our lunch & dinner menus are available as takeaway?

View them at www.peppertreerestaurant.co.nz

07 866 8211

Classifieds

Cost 30 cents per word – please drop the ad and payment (cash or cheque) into Richardsons Real Estate, Coromandel or you can email your words to corochronicle@gmail.com and I will give you my bank details to direct credit.

PROFESSIONALS

ABBY'S HEALING HAVEN. Therapeutic massage and organic skincare at the Lions Den Hostel www.lionsdenhostel.co.nz (07) 866 8157 Abby 021 352 486.

ARE YOU THINKING of having those needed jobs done? Whether it be Carpentry, Decorating, Tiling, I can give you advice and a free quote. Call Vaughan on (07) 866 7969.

BEGINNERS YOGA WITH BECKS RESTARTS SEPTEMBER 1ST Beck's is away in July and August on a winter honeymoon. Classes will restart on Tuesday September 1st at the Coro Gym from 5.20pm to 6.40pm, \$7, all equipment provided.

BROKEN GLASS? Call Mike Coromandel Glass (07) 866 8869.

CARPENTRY: Windows, Doors, Decks, Kitchens. Sound Tradesman. Free Quotes. Vaughan Udall (07) 866 7969.

CLASSICAL HOMEOPATH Nicole McCauley. For appointments call 021 1727583

CLEAN UP - CLEAR OUT, Give GO GIRLS a shout! Cleaning, gardening, lawns & weed eating, give our skills a test let GO GIRLS do the rest. Phone Lizzie (07) 866 8810/021 148 5261.

COMPUTER SOLUTIONS. Microsoft Certified Systems Engineer with over 15 years of IT experience providing solutions and support service for PCs, Laptops, Printers, Wired and Wireless Networks, Virus and Spyware removal, Data Protection and Recovery. Up gradations, Consulting, Design and Training. Contact: Dheeraj Bali Ph (07) 866 7550 Mob 021 207 1341 E-mail: dbali@vodafone.co.nz

COROMANDEL CATTERY (07) 866 8117.

DYNAMIC TREE CARE – Shaping the future of your trees. Call us on (07) 866 8177 or 027 451 2224.

DYNAMIC TREE CARE – Professional & affordable Coromandel based arborist for quality pruning, felling, shaping, removals & care. Contact (07) 866 8177 or 027 451 2224.

ELECTRICIAN, REGISTERED, Steve Garmey, 17 Puriri Place, Tuatēawa, (07) 866 7669, 021 0244 0002.

FENCES, DECKS, retaining walls, dingo digger services Mark 027 433 6260.

"FOR TREES" PETER NOVIS, climbing specialist, felling, topping, pruning and chipping. Fully insured. Phone (07) 866 7764, 027 636 3253.

HOME AND BUILDING MAINTENANCE. Qualified Joiner. Contact Tony Burton 021 337 484.

LOG SPLITTING. 10-15 cubic metres an hour. Minimum 4 hours Phone or txt Paul 027 967 1401.

MEDICINE WOMAN Plant Spells available at Abby's Healing Haven 021 352 486, (07) 866 8157. Formulations for personal transformation by medicine woman Franchelle Ofsoko-Wyber, a genuine matakite.

MUSIC RECORDING. Record your original music. Professionally mixed and mastered. corosoniclab.co.nz. Matt Sephton 021 0438689

ORGANIC SKIN COMPANY. Calendula cream and face care products for sale at Abby's Healing Haven. Stockist for River Veda organic perfumes, lipsticks, make-up and organic skincare. Organic facials available. 126 Te Tiki St, Coromandel (07) 866 8157.

PAINTING AND WALLPAPERING: Neat tidy work. Free Quotes. Vaughan Udall (07) 866 7969.

PENINSULA MIDWIVES. Experienced Midwives Available. Fiona Kington 021743717 or 078660413, Jocelyn Yates 0279124104. Free Pregnancy tests.

PIG HUNTERS I can roll your pork. Plain or seasoned \$30. Phone Ernie 021 0261 7945.

RANCH SLIDER WONT SLIDE? Call Mike Coromandel Glass (07) 866 8869.

THE LIGHTHOUSE STUDIO: Joinery/custom woodworking, furniture, Persian rugs and LOCAL ART. Between Coro Pies and Morrissey Automotive, down the green lane. 75 Wharf Rd 021 038 0923.

TILING: Wall and floor tile laying service. High standard of work. Free quotes. Vaughan Udall (07) 866 7969.

TREESHAPES. Qualified Arborists for all treework, chipping, stumpgrinding, hedges, section clearance, free quotes. Phone 0274 726 627.

VINYL RECORDS TO CD. Transfer your old records and tapes to CD. corosoniclab.co.nz Matt Sephton 021 0438689

WINDOW CATCH BROKEN? Call Mike Coromandel Glass (07) 866 8869.

WINTER IS HERE: Jobs to be done! Phone Vaughan Udall for a free quote (07) 866 7969.

YOGA WITH JESSICA – Wednesdays 7-8:30pm at the Events Centre (above the swimming pool, behind the information Centre). All welcome, equipment provided, \$8 per class. Ph: (07) 866 8405 or 021 884 518 for more info.

FOR SALE

BUSINESS FOR SALE. Key cutting business for sale. Includes machine and keys. Training available. P.O.A Genuine enquiries to Mob 027 772 2360.

COROMANDEL FIREWOOD SUPPLIES quality wood at affordable prices t-tree and pine free local delivery phone or txt ezra on 022 0860 927.

FIREWOOD T/TREE, Pine, Gum \$100 hotmix nice and dry. Txt or phone Paul 027 967 1401.

NOW SELLING NATURAL INTERIOR AND EXTERIOR OIL for wood. Made in NZ by the Naturalhouse Company. Excellent product, easy to use. Available from The Lighthouse Studio, 75 Wharf Rd ph 021 038 0923.

SHEEP MANURE \$8 bag, delivered Coro town. Food for your garden. Fundraiser for CAS Yr7/8 camp. Ph (07) 866 8081.

FOR HIRE/RENT

SOUND SYSTEM FOR HIRE, loud and clear sound. Matt Sephton 021 043 8689.

STUDIO/BEDSIT, \$160/wk plus power, suit 1 or 2 people, hot shower, gas hob, compost toilet, ph (07) 866 7337.

WANTED

LOOKING FOR LONG TERM RENTAL 1-3 bedrooms, pet friendly as we have 5 year old Labrador, preferably with fireplace. Please Contact Jeremy 0211445562

WANTED ALL LIVESTOCK. We inspect in the paddock. Also we transport every Thursday to Waikato's largest saleyards in Morrinsville. Phone Dave Coatsworth 0274 817 100.

WORKING COUPLE looking to move back to the Coromandel township about March/April 2016. We are looking for fulltime work if possible, anything considered. Deb has come from a busy transport office and Adrian a builder/handyman but at the moment working as a Pest Control Technician. We are also looking for long-term accommodation, clean and tidy tenants, no animals. Please contact Deb on 027 733 9303 debsjonty@paradise.net.nz anytime.

WORK WANTED

ANYTHING CONSIDERED, Ph Jo Notman (07) 866 8074.

TREE SERVICE. Dismantling or pruning. Free quotes. Call Jeremy Haszard (07) 866 0118.

TREESHAPES. Qualified Arborists for all treework, chipping, stumpgrinding, hedges, section clearance, free quotes. Phone 0274 726 627.

PUBLIC NOTICE

THE ANNUAL GENERAL MEETING of the Coromandel Business Association will be held on 14 September at the Coromandel Chambers at 5.30pm.

Poetry SPOT

Sunbeams

By Beryl Van Donk

Let us always see the sunshine
as we live from day to day,
Push the dismal thoughts asunder
it will help us on our way.

Make troubles flee before you,
not let them rule your life,
there's always brighter things to see
not clouds, or gloom and strife.

Be always positive minded
throw negativity away,
it will make your life contented,
thats what life's winners say.

Coromandel Town weekly and monthly meetings

Every Monday

Coro Gym – Step/aerobics, 155 Pottery Lane, contact Peg (07) 866 86358am
 Mahamudra Centre, guided meditation in gompaa..... 8.30-9am
 Rudolf Steiner Kindergarten, Rings Rd, contact Kelly (07) 866 7794 8.30am-2m
 Coromandel Hikers Group, Hauraki House, contact Colin & Elspeth (07) 866 71379am
 Colville Social Services Collective, Colville Hall, contact (07) 866 6920 9am-3pm
 Kohanga Reo o Kapanga, contact (07) 866 8417 9am-3pm
 Rudolf Steiner Playgroup, Rings Road, contact Kelly (07) 866 7794 9.30am-12.30pm
 Coro Gym – Sit and be fit, 155 Pottery Lane, contact Peg (07) 866 8635 9.30am
 Coro Gym – Fitness and Fun, 155 Pottery Lane, contact Judy (07) 866 8637 10.30am
 Aerobics low-high xtrng KiwiCan rooms, contact Evy (07) 866 8242 5.15-6.15pm
 Coro Gym – Kick fit with Christajo, 155 Pottery Lane, contact 021 033 9329 5.30-6.30pm
 Shrinking Violets, contact Betsie (07) 866 7076 5.30pm
 Coro Contract Bridge, Coro Ambulance rooms, contact Lyn (07) 866 8858 7pm
 Four-part harmony singing, contact Sue (07) 866 8833 7.30pm

Every Tuesday

Homeschoolers gathering, contact Julene (07) 866 8005
 Mahamudra Centre, guided meditation in gompaa..... 8.30-9am
 Rudolf Steiner Kindergarten, Rings Rd, contact Kelly (07) 866 7794 8.30am-1.30pm
 Colville Bay Early Learning Centre, rear Colville School, contact Alex (07) 866 83199am-3pm
 Coro Walking Group, Hauraki House car park contact Ruth (07) 866 72469am
 Swissball Training – Hi-Tech Health & Fitness, contact Marlene (07) 866 8019..... 9am
 Colville Social Services Collective, Colville Hall, contact (07) 866 6920 9am-3pm
 Kohanga Reo o Kapanga, contact (07) 866 8417 9am-3pm
 Music and Dance, Elim Church- Preschoolers Dance Group, contact Dawn (07) 866 8150..... 9.30-11am
 Coro Ladies Golf, Hauraki Rd, contact Peter (07) 866 7633 tee off 10am
 Yoga, Colville Hall, contact (07) 866 6612 10am
 Croquet, Woollams Ave, contact Judy (07) 866 8637 9.45am
 Coromandel Playcentre, Woollams Ave 10.30am-1pm
 Narcotics Anonymous meeting, Havalona Centre, contact 021 314 467 12 noon
 500 card session at the Bowling Club, contact (07) 866 8886 1pm
 Coro Gym – Fitness and Fun, 155 Pottery Lane, contact Judy (07) 866 8637 1pm
 Coro Cub Scouts, Scout Hall, Hauraki House, contact Abby Morgan 07 211 9790 .. 4-6pm
 Aerobics non-impact cross training & stretching KiwiCan rooms, contact Evy (07) 866 8242 5.15-6.15pm
 Coromandel Ambulance training, Ambulance Station, contact Felix (07) 866 8279 7-9pm
 Coro Motorcycle Club, Star & Garter, contact John (07) 866 6776 7-9pm
 Swissball Training – Hi-Tech Health & Fitness, contact Marlene (07) 866 8019..... 7pm
 Badminton, school gymnasium, racquets available, contact Josh 021 0839 7825 or Nadine 022 174 55 24 7pm

Every Wednesday

Dharma Gaia, Meditation, contact (07) 866 7995 6-7am
 Dharma Gaia, Sitting & Walking Meditation, contact (07) 866 7995 7.30-9pm
 Coro Gym – Step/aerobics, 155 Pottery Lane, contact Peg (07) 866 8635 8am
 Mahamudra Centre, guided meditation in gompaa..... 8.30-9am
 Rudolf Steiner Kindergarten, Rings Rd, contact Kelly (07) 866 7794 8.30am-2pm
 Rudolf Steiner Nursery (<3's), Rings Rd, contact Kelly (07) 866 7794... 8.30am-2pm
 Colville Bay Early Learning Centre, rear Colville School, contact Linda or Alex (07) 866 8319 9am-3pm
 Colville Social Services Collective, Colville Hall, contact (07) 866 6920 9am-3pm
 Kohanga Reo o Kapanga, contact (07) 866 8417 9am-3pm
 Coro Gym – Sit and be fit, 155 Pottery Lane, contact Peg (07) 866 8635 9.30am
 Coro Gym – Fitness and Fun, 155 Pottery Lane, contact Judy (07) 866 8637 10.30am
 Coromandel Golf Club – mens, Hauraki Rd, contact Peter (07) 866 7633. tee off 12.30pm
 Scramble Club, contact Joan for venue on (07) 866 7580 1pm
 Coro Tennis Club – club night, Tiki Rd, contact Gayle (07) 866 8063 4pm
 Wing Chun Kung Fu- Hong Kong Style, contact Chi Sau Club 027 283 0773.. 4.30-8.30pm
 Aerobics – hi/low, KiwiCan rooms CAS, contact Evy (07) 866 8242..... 5.15-6.15pm
 Running Group, meet at rugby club grounds.
 Contact Mark 027 338 6697 or (07) 866 7660 5-6.15pm
 Coro Gym – Pump with Betty, 155 Pottery Lane (07) 866 8635 5.30-6.30pm
 Circuit Training – Hi-Tech Health & Fitness, contact Marlene (07) 866 8019 7pm
 Yoga, Events Centre (behind 4 Square) \$8, contact Jessica (07) 866 8405 7-8.30pm
 Discussion night-optional pot luck dinner, Mahamudra Centre, contact (07) 866 6851 dinner 6pm, meeting 7-8.30pm
 Walking & sitting meditation, Dharma Gaia Centre, contact (07) 866 7995 7.30-9pm

Every Thursday

Mahamudra Centre, guided meditation in gompaa..... 8.30-9am
 Rudolf Steiner Kindergarten, Rings Rd, contact Kelly (07) 866 7794 8.30am-2pm
 Rudolf Steiner Nursery (<3's), Rings Rd, contact Kelly (07) 866 7794 8.30am-2pm
 Coro Walking Group, Hauraki House car park contact Ruth (07) 866 7246 9am
 Coro Art Group, St Andrews Church, contact Val (07) 866 8911 9am-12pm
 Colville Bay Early Learning Centre, rear Colville School, contact Linda or Alex (07) 866 8319 9am-3pm
 Kohanga Reo o Kapanga, contact (07) 866 8417 9am-3pm
 Meditation for Everyone, in Pyramid (behind Driving Creek Cafe)..... 10-11am
 Tai Ji, Top Floor, Waikato Events Centre, contact Sol (07) 866 8971 10-11am
 Coro Gym – Fitness and Fun, 155 Pottery Lane, contact Judy (07) 866 8637 10.30am
 Coro Gym – Ukulele group practice for beginners, contact Peg (07) 866 8635 from 1pm
 Bowling Club Housie, contact Sharan (07) 866 7760 from 1pm
 Coro Community Garden, Glover St, contact Louis (07) 866 8866 2-4pm
 Service of the Word & Holy communion, St Colmans church, contact Jocelyn (07) 866 7126 5pm
 Last class for 2014 is 11 Dec, restart Feb 2015 5.15pm to 6.30pm
 Aerobics – step only, KiwiCan rooms CAS, contact Evy (07) 866 8242 5.15-6.15pm
 Coro Gym – Kick fit with Christajo, 155 Pottery Lane, contact 021 033 9329 5.30-6.30pm
 Swissball Training – Hi-Tech Health & Fitness, contact Marlene (07) 866 8019 7pm
 Quiz night, at the Bowling Club, contact John (07) 866 8841 7pm

Every Friday

Circuit Training – Hi-Tech Health & Fitness, contact Marlene (07) 866 8019 6am
 Coro Gym – step/aerobics, 155 Pottery Lane, contact Peg (07) 866 8635 8-9am
 Colville Bay Early Learning Centre, 3-4 yr olds, rear Colville School, contact Linda (07) 866 8319 9am-3pm
 Rudolf Steiner Kindergarten, Rings Rd, contact Kelly (07) 866 7794 8.30am-2pm
 Rudolf Steiner Nursery (<3's), Rings Rd, contact Kelly (07) 866 7794 8.30am-2pm
 Mahamudra Centre, guided meditation in gompaa..... 8.30-9am
 Colville Bay Early Learning Centre, rear Colville School, contact Linda or Alex (07) 866 8319 9am-3pm
 Kohanga Reo o Kapanga, contact (07) 866 8417 9am-3pm
 Yoga for everyone, Anglican Church Hall, contact Katie (07) 866 6612 9-10.30am
 Colville Services Collective, Colville Hall, contact (07) 866 6920 9am-3pm
 Coro Gym – Sit and be fit, 155 Pottery Lane, contact Peg (07) 866 8635 9.30-10.30am

Coromandel Playcentre, Woollams Ave 9.45am-12.15pm
 Coro Gym – Fitness and Fun, 155 Pottery Lane, contact Judy 8668637 1pm
 Coro Tennis, Men's night, contact Gayle (07) 866 8063 4pm
 Coro Gym – Crazy Horse Productions, contact Natalie 021 048 9772 4.15pm

Every Saturday

Mahamudra Centre, guided meditation in gompaa..... 8.30-9am
 Coro Tennis Club – juniors, Rings Rd, contact Gayle (07) 866 8063 9am
 Croquet, Woollams Ave, contact Judy (07) 866 8637 9.45am
 Coromandel Golf Club-club play, Hauraki Rd, contact Peter (07) 866 7633tee off 12.30pm
 Coromandel RSA, contact Ian (07) 866 7138 (winter 1st, 3rd & 5th Sat only) 4-10pm
 St Colmans Catholic Church-mass, Rings Rd, contact Frieda (07) 866 7872 5pm
 Prayers for dead and healing, Mahamudra Centre, contact (07) 866 6851 5-6pm

Every Sunday

Mahamudra Centre, guided meditation-in Gompaa, contact (07) 866 6851 10-10.30am
 Aerobics – step combo, KiwiCan rooms CAS, contact Evy (07) 866 8242 9-10am
 Elim Church Services, Rings Rd, contact Steve (07) 866 6900 10am-12 noon
 Coro Tennis Club-club play, Rings Rd, contact Gayle (07) 866 8063 2pm
 Swissball Training – Hi-Tech Health & Fitness, contact Marlene (07) 866 8019 2pm
 Circuit Training – Hi-Tech Health & Fitness, contact Marlene (07) 866 8019 4pm
 Prayers for dead and healing, Mahamudra Centre, contact (07) 866 6851 5-6pm

Monthly

1st Mon – Coro Patchwork & Quilters Ambulance rooms, contact Jill (07) 866 7484.....

9.30am-3.30pm

2nd Mon – Friendship Group, contact

Jocelyn (07) 866 7101

3rd Mon – Coro Patchwork & Quilters

Ambulance rooms, contact Jill (07) 866 7484

9.30am-3.30pm

3rd Mon – Alzheimer's Carers' Group,

Retirement Village Hall, bring plate & koha,

contact (07) 282 0453..... 10.30am

1st Tue – Coro Motorcycle Club general

business John (07) 866 6776 7.30pm

2nd Tue – Coromandel/Colville Cmty Board,

Council Chambers, contact (07) 866 1001

..... 9am

2nd Tue – Public Trust, Harcourts, contact

0800 368 620..... by appt

1st Wed – Coro Embroiderers' Guild,

Ambulance Station, contact Jill Wilson

(07) 866 7484..... 10am-3pm

1st Wed – Lions Dinner Meeting,

Ambulance Rooms; contact Jayne Lister

(07) 866 7687..... 6pm

2nd Wed – Garden Circle, ph Julie Jensen

for venue, (07) 866 7546 1pm

3rd Wed – Lions Business Meeting,

Ambulance Rooms; contact Jayne Lister

(07) 866 7687 7pm

4th Wed – RSA Women's Section, RSA

lounge, contact Betty (07) 866 8192

..... 1.30pm

2nd Thu – Coromandel Writers' Group,

contact Margaret (07) 866 8862

..... 10.30am-2.30pm

4th Thu – Coro SeniorNet, Trust Waikato

Events Ctr, contact Loes (07) 866 8053... 1.30pm

1st Sat – Coro RSA, RSA Hall, contact Errol

(07) 866 8845..... 4-10pm

3rd Sat – Luncheon Ladies, contact Lorraine

(07) 866 8144..... 12pm

3rd Sat – Coro RSA, RSA Hall, contact Errol

(07) 866 8845..... 4-10pm

1st Sun – Coro School of Mines & Historical

Sty/Museum, contact (07) 866 8711 4pm

1st Sun – St Andrew's Union church service,

Rings Rd, contact (07) 866 8633 10am

2nd Sun – Christ Church service, Tiki Rd,

contact Barbara O'Reilly (07) 866 8299..... 10am

2nd Sun – Young Eagles, Tiki Rd, contact

Lisa (07) 866 2055 9am

3rd Sun – St Andrews Union church service,

Rings Rd, contact Hilda (07) 866 8633

..... 10am

4th Sun – Christ Church service, Tiki Rd,

contact Barbara O'Reilly (07) 866 8299..... 10am

5th Sun – Christ Church/St Andrew's share

..... 10am

Advertisers' directory

Company	page
360 Discovery Ltd	21
Ann Kerr-Bell – Natural Medical Centre	18
Castle Rock Cafe	10
CILT	12
Coastal Small Engine Services	15
Coro Gym	28
Coromandel Adventures	23
Coromandel Budget Advisory Service Inc	11
Coromandel Cabs	14
Coromandel Construction	19
Coromandel Garage	4
Coromandel Handyman Services	15
Coromandel Marine Eng.	24
Coromandel Marine Farmers' Ass.	7
Coromandel Plumbing	26
Coromandel Property Maintenance	6
Coromandel Quarry	4
Coromandel Refrigeration	22
Coromandel Senior Settlement Trust	27
Driving Creek Railway	20
Gaia Decorators	14
Harcourts	16-17
Jack Carson	4
James and Turner	26
James Drainage '97 Ltd	7
Llandem Consulting Engineers	14
Lynley Ogilvie	6
Mana	20
Papa Aroha Engineering	10
Peninsula Electrical Services	26
Pepper Tree Restaurant & Bar	29
Purnell Jenkison Oliver	19
Richardsons Real Estate	8-9
Scott Revell Building Contractor	6
Star & Garter	13
Steelcraft Ltd	7
Tangiaro Kiwi Retreat	18
TCDC	25
Te Korowai Hauora o Hauraki	5
The Hauraki Taxation Service	14
The Lighthouse Studio	24
Waitaia Nursery	27

If your meeting is listed incorrectly, or has been missed out, please email Debbie at corochronicle@gmail.com with the subject "meeting" phone (07) 866 7119 or post details to PO Box 148, Coromandel 3543. Please include contact name and phone number.

MON	TUE	WED	THU	FRI	SAT	SUN
3	4	5	6	7	1 KiwiSport Saturdays - Basketball (see pg 28)	2
High tide 9am (3.1m), 9.28pm (3.2m) Low tide 2.44am (0.1m), 3.03pm (0.0m) ▶ Best bite 2am/pm	High tide 9.51am (3.1m), 9.19pm (3.2m) Low tide 3.35am (0.1m), 3.54pm (0.1m) ▶ Best bite 3am/pm	High tide 10.42am (3.0m), 11.11pm (3.1m) Low tide 4.26am (0.1m), 4.45pm (0.2m) ▶ Best bite 4am/pm	Toe Nail Clinic at Te Korowai (see pg 14) Mid-Winter Christmas Dinner at Pepper Tree Restaurant (see ad pg 29)	Start of Creating Space Yoga with Clare Etherton at Mana Retreat (see ad pg 20)	High tide 7.18am (2.9m), 7.48pm (3.1m) Low tide 1.02am (0.3m), 1.25pm (0.1m) ▶▶▶▶▶ Best bite 12.30am/pm	High tide 8.09am (3.0m), 8.38pm (3.2m) Low tide 1.53am (0.2m), 2.14pm (0.1m) ▶▶▶▶▶ Best bite 1am/pm
10	11	12Start of I Choose Living Cancer Retreat with Jasmira Kovacev at Mana Retreat (see ad pg 20) Ear Health Clinic at Te Korowai (see pg 14)	13 Library AGM 1.30pm (see pg 11) 6 Course Designation Dinner at Castle Rock Café (see ad pg 10) Indian theme night at Pepper Tree Restaurant (see ad pg 29)	14 Start of Working with Anger with Sarah Brooks at Mahamudra Centre, Colville Coromandel Music Society present Clay, Dove and Shone at The Bowling Club (see pg 24)	15	16
High tide 2.56am (2.6m), 3.32pm (2.6m) Low tide 9.08am (0.5m), 9.45pm (0.7m) ▶ Best bite 8am/pm	High tide 3.56am (2.6m), 4.32pm (2.6m) Low tide 1.0.09am (0.5m), 10.43pm (0.6m) ▶ Best bite 9am/pm	High tide 4.54am (2.6m), 5.27pm (2.7m) Low tide 11.05am (0.5m), 11.36pm (0.6m) ▶ Best bite 9.30am/pm	High tide 5.49am (2.6m), 6.17pm 2.7m) Low tide 11.57am (0.5m) ▶▶▶▶▶ Best bite 10am/pm	High tide 6.40am (2.6m), 7.03pm (2.8m) Low tide 12.25am (0.6m), 12.44pm (0.4m) ▶▶▶▶▶ Best bite 11am/pm	High tide 7.27am (2.7m), 7.46pm (2.8m) Low tide 1.10am (0.5m), 1.26pm (0.4m) ▶▶▶▶▶ Best bite 12am/pm	High tide 8.10am (2.7m), 8.26pm (2.8m) Low tide 1.53am (0.5m), 2.06pm (0.4m) ▶▶▶▶▶ Best bite 12.30am/pm
17	18	19	20	21	22 KiwiSport Saturdays - Soccer (see pg 28) Daffodil Day at Coromandel Golf Club (see pg 29) French Night at Castle Rock Café (see ad pg 10)	23
Deadline: Coromandel Town Chronicle September Issue	High tide 8.50am (2.7m), 9.04pm (2.7m) Low tide 2.32am (0.5m), 2.44pm (0.4m) ▶ Best bite 1.30am/pm	High tide 9.28am (2.7m), 9.42pm (2.7m) Low tide 3.11am (0.5m), 3.22pm (0.4m) ▶ Best bite 2am/pm	High tide 10.05am (2.6m), 10.19pm (2.7m) Low tide 3.48am (0.5m), 4pm (0.5m) ▶ Best bite 2.30am/pm	High tide 10.42am (2.6m), 10.57pm (2.6m) Low tide 4.26am (0.5m), 4.39pm (0.5m) ▶ Best bite 3am/pm	High tide 11.21am (2.5m), 11.37pm (2.5m) Low tide 5.05am (0.6m), 5.22pm (0.7m) ▶▶▶▶ Best bite 4am/pm	High tide 12.04pm (2.4m) Low tide 5.47am (0.6m), 6.08pm (0.7m) ▶▶▶▶ Best bite 5am/pm
24	25	26	27 Start of The Sacred Alchemy of the Heart at Mana (see ad pg 20) Curry theme night at Pepper Tree Restaurant (see ad pg 29) Quiz night at Castle Rock Café (see ad pg 10)	28 Daffodil Day Street Appeal (see pg 4) Start of Practicing Perfection at Mahamudra Centre, Colville Museum Competition deadline (see pg 7)	29 KiwiSport Saturdays - Netball (see pg 28)	30
High tide 1.08am (2.4m), 1.47pm (2.4m) Low tide 7.23am (0.7m), 7.56pm (0.8m) ▶▶▶▶ Best bite 6.30am/pm	High tide 2.01am (2.4m), 2.47pm (2.4m) Low tide 8.20am (0.7m), 8.56pm (0.8m) ▶ Best bite 7.30am/pm	High tide 3am (2.4m), 3.48pm (2.5m) Low tide 9.22am (0.7m), 9.55pm (0.7m) ▶ Best bite 8am/pm	High tide 4.02am (2.4m), 4.46pm (2.6m) Low tide 10.22am (0.5m), 10.52pm (0.5m) ▶ Best bite 9am/pm	High tide 5.03am (2.6m), 5.41pm (2.8m) Low tide 11.19am (0.4m), 11.46pm (0.4m) ▶ Best bite 10am/pm	High tide 6.01am (2.8m), 6.34pm (3.0m) Low tide 12.13pm (0.2m) ▶▶▶▶▶ Best bite 11am/pm	High tide 6.56am (2.9m), 7.25pm (3.1m) Low tide 12.59am (0.2m), 1.04pm (0.1m) ▶▶▶▶▶ Best bite 12am/pm
31						

Make sure your event gets listed
To get your event listed, email the details, your name and contact phone number to Debbie at corochronicle@gmail.com with the subject “event”. Or post to Jude Publishing, PO Box 148, Coromandel. There is limited space available and will be published subject to space availability, with preference to not-for-profit groups.

KEY
New moon Full moon
Tide times and heights from Land Information NZ for Coromandel Harbour.
For Thames times -15min High and -18min Low. Note: Tide heights are different for Thames.
Bite times and good fishing ratings supplied by Ken Ring of www.predictweather.com, author of the
Weather Almanacs for NZ for 2013 and 2014.
▶ = Average fishing, ▶▶▶▶ = Very good fishing, ▶▶▶▶▶ = Excellent fishing

**COROMANDEL RUBBISH
& RECYCLE TRANSFER
STATION & E-CYCLE HOURS**
Tuesday and Thursday
1.30pm-5.30pm
Saturday 10.30am-5.30pm
Sunday 11.30am-7.30pm