

February 2017
Volume 21 Issue 2

Coromandel Town Chronicle

FREE
Community Magazine

Founded and owned by the Coromandel Business Association since 1996

Reuse facility opens

SEE PAGE 4



Patchwork show PG 16



Raffle raises money for charity PG 17



Kiwi found dead PG 28





OPEN ART STUDIOS

Kuaotunu to Tairua
First 2 weekends in March
4/5 and 11/12 March

39 Studios and 2 Art Groups

Plus - A special Pop Up Gallery in
Whitianga featuring Emerging Artists
and Guest Artists from all over the
Coromandel Peninsula



Get your **FREE** Guide at i-sites and galleries or go to
our website for a full list of Guide stockists.

Opening night 10th Anniversary Gala Celebration
Friday March 3, 7.30pm. Tickets online

www.mercurybayartescape.com

mercury bay Art escape



Open 7 Days from 11am

HAPPY HOURS

3-5.30pm Port O'Call Sports Bar, Tap Beer Only.
5.30-7pm All Bars, (excludes restaurant)

GOLDRUSH & GOLCONDA

GARDEN BARS & BISTRO

Lunch Every Day 12-3pm (last orders)
Dinner 5-9pm (last orders), Snacks 'till close

TOP DECK RESTAURANT & CAFÉ

With Fabulous Harbour Views & Balcony Dining.

Dinner Wednesday-Sunday 5pm-9pm* (last order)

*May be extended if sufficient demand.

Daily Specials, Kids Menu

Call 07 866 8272 for reservations, and updated additional
times that we will be open during the holiday season.

ACCOMMODATION

Modestly priced traditional Hotel accommodation in
attractively appointed rooms, with balcony access.
Continental breakfast available.

EVERY THURSDAY

Every Thursday Chase the Ace at 6pm PLUS Meat Raffle at
6.45pm two chances for \$5.00 – proceeds for February will
go to Coromandel Volunteer Fire Brigade.

WHAT'S ON IN FEBRUARY:

Top Deck Sunday Sundae

– **FREE Sundae** with every main ordered

Bistro – **Monday Munchies** – \$10.00 Butter Chicken & Rice

Bistro – **Tuesday Chewies** – \$10.00 BLAT & fries

Bistro – **Wednesday Wedges Upgrade**

– The “works” for the price of plain

Every Friday, Saturday & Sunday

Noon - 5:00pm Wood-Fired pizzas

Saturday 4 & Sunday 5 February

NRL 9's Live on Sky TV in Port O' Call Bar

Monday 6 February

Be entertained from 3pm by Mark Taipari.

Friday 10 February

Karaoke with Audrey from 9:00pm. Bar tab prizes.

FREE ENTRY NO COVER CHARGE

Saturday 18 February

Some Like It HOT!!! Jalapeno burger eating competition –
timed event on the fastest to eat a HOT HOT HOT burger.
\$10.00 entry fee - all funds raised to Coromandel Volunteer
Fire-Brigade. Rounds start at 4:00pm. Many prizes.

Friday 24 February

DJ Tuku from 9:00pm - 1am.

FREE ENTRY NO COVER CHARGE



146 Wharf Road, Ph 07 866 8272
Like us on Facebook
search “Admirals Arms Hotel”

Coromandel Town Chronicle

Cover picture:

The Goldmine opens at the Coromandel Town Transfer Station.

The *Coromandel Town Chronicle* is published by Jude Publishing Ltd on behalf of the Coromandel Business Association. It is delivered free to the Coromandel area.

Jude Publishing Ltd
PO Box 148, Coromandel 3543
www.coromandeltownchronicle.co.nz

If you have any news stories that you'd like included please email corochronicle@gmail.com or post to PO Box as above.

If you are not sure how to put an article together for publication then find tips and advice on the website: www.coromandeltownchronicle.co.nz/html/guidelines.html

For advertising please email Debbie on corochronicle@gmail.com or phone 021 235 6648

The Coromandel Town Chronicle is printed with vegetable oil based inks by Print House Ltd, Hamilton. An accredited FSC and PEFC printer. Enviromark Bronze certified.

Coromandel Business Association's Mission Statement: To support business, partnering with our community board, to strengthen and encourage the development of Coromandel Town and environs.

Want to support the CTC?
Live out of town? You need an annual subscription.
\$40 (incl. GST) NZ postage only.
See contact details above.

Deadline for the next issue is 4pm Monday 13 February

Disclaimer: The publisher and its editors of the *Coromandel Town Chronicle* shall not be responsible in any way for opinions expressed in letters and articles contained in the *Coromandel Town Chronicle* or for loss or damage suffered by anyone in reliance upon the information contained therein. Further, no endorsement of any product or service featured or advertised in the *Coromandel Town Chronicle* should be implied or assumed.

Coromandel Business Association Disclaimer: The opinions of the editor do not necessarily reflect the opinion of the Coromandel Business Association. The Chronicle should be representing all parties and showing a cross section of feedback from the community and we believe this to be the case. The editor of any publication is entitled to a personal opinion and provided this is identified as such then this is acceptable to us.

ISSN 1178-721X (Print)
ISSN 1179-4895 (Online)

Editor's comment

Welcome to the first time the Chronicle has had colour! Colour will be printed on the cover, inside front cover, inside back cover and back cover on a trial basis if I get enough advertiser support. Hope you like it. This means that the calendar now has to be just inside the back cover in order to allow colour for the advertising – find the calendar in this issue on page 34.

Book your colour space now for an upcoming issue (first come first served – see www.coromandeltownchronicle.co.nz for rates).

The lead story in this issue is about the opening of The Goldmine. It is great to see this facility available locally. I have already purchased a coffee table, tools and shelving, and have my eye on some other items that I may be able to "upcycle".

I hope you are all having a great summer.

Debbie



Cartoon supplied by Alan Bengel

Letters

Dear Debbie,
I am writing to tell you how blessed we are to have Phoenix House – hospital and home.

I have entered numerous hospitals and all give a cold atmosphere on entry. When entering Phoenix House the whole atmosphere is warmth, serenity and a welcoming staff.

Having been a recent patient I can say that expert care provided was superb.

Every member of the staff who attended to me showed willing help in all circumstances.

The registered nurses showed not only competence but cheerful administration as every other staff gave. Every one of them was a joy to meet. I love them all.

They have enriched my life.

Thank you from the bottom of my heart.

Sincerely,
Beryl van Donk, Coromandel Town

Send letters to the *Coromandel Town Chronicle*, PO Box 148, Coromandel 3543 or email to corochronicle@gmail.com. Contributions should be kept short, and should not exceed 350 words. They must include name, address and telephone number. The editor reserves the right to reject letters or edit them for clarity and space.

Dear Debbie,
In January's issue was an advert for a book analysing scientific claims about 1080. This book by Dave Hansford looks at the national scene, which has little or nothing to do with the quantity and cavalier way 1080 has been poured on the Coromandel where 87% of the land is managed by DOC.

A book just released called *Rural Revolt* by Reihana Robinson deals explicitly with the way 1080 has been spread over the Coromandel since 1994, its cost in non-target species, money, jobs and its effect on social division.

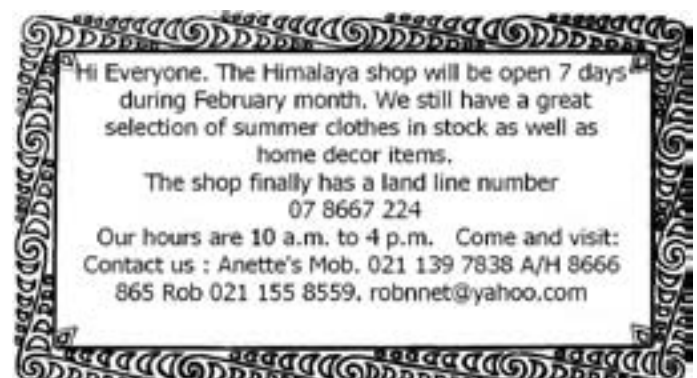
John Veysey, Coromandel Town

Dear Editor

We wish to acknowledge with thanks the support given to us in the form of a grant from the Waikato Regional Council to enable us to continue pest control measures in our area.

Regards

Elisabeth Agar and Peter Novis



The Goldmine Reuse Centre opens its doors

Local family, The Gilmer's, were the first customers at "The Goldmine", Coromandel-Colville's new Reuse Centre (second hand shop) which opened its doors for its first day of trading at the Coro refuse transfer station (RTS) in Hauraki Rd on 28 December.

Shop Co-ordinator, Lucy Te Wani said "it was a wee bit hectic getting set up and finding our feet for the first couple of days however the shop is now fully stocked with lots of great household items and we are trading well. We are very pleased with the positive feedback we've received from everyone that has visited us so far".

The Goldmine, as the venture has been named, is located at the RTS which was the site of the flourishing Hauraki goldmine back in the 1800's. The facility has been established and is operated by Coromandel Independent Living Trust (CILT) as a joint venture with TCDC (refuse service provider and site owner) and Smart Environmental Ltd (Council's solid waste contractor). Funding for the project has been received from The Ministry of Environment waste minimisation fund, TCDC, CILT, Waikato Regional Council, Trust Waikato, SEL, The Seagull Centre Trust (Thames) and from local sponsors.

The philosophy behind the venture is to improve waste management practices in the Coromandel-Colville Ward by minimising the volume of reusable items being thrown away and transported out of the District to be disposed of at the Tirohea landfill, near Paeroa.

The facility offers a sales shop and outdoor display area and also a workshop for repair of damaged items and creative pursuits. A further goal of the enterprise is to provide waste minimisation training and resources for local events.

Mike Noonan, executive trustee of CILT says "it's a win/win all around as we all get access to useful items that would otherwise



Sue Gilmer, makes the very first purchase. Husband Wally, in the background says "we have a box of unused frames in the garage, you can have the lot." These are our ideal customers!

be disposed of at a high cost to both the ratepayer and the environment. The venture offers both paid employment opportunities and work skills or artistic training for local youth. The Goldmine staff, Lucy, Ian and Ben, join Eric, the RTS co-ordinator, as part of the CILT on-site operations team. The intention is for the workshop to be operated primarily by skilled volunteers and we are very keen to hear from anyone who would like to offer their support to the venture. If you are interested in volunteering at The Goldmine you can contact Carol Sutherland, our Volunteer Co-ordinator on Ph (07) 866 8358".

Project Manager, Guy Macindoe, said it all started with the community board asking CILT to investigate ways to improve waste management in the Ward about four years ago and it's been a real team effort bringing the project together ever since. After lots



of challenges that caused ongoing delays and some last minute foundation issues that required a creative and expensive engineering solution (we uncovered an old mine shaft during the site works) we have finally made it and Coro's new ecological Goldmine is now open. This would not have been possible without the enthusiastic support and cooperation of all parties including Council and our wonderful local contractors.

The shop is open for the same operating hours as the transfer station.

If you have goods that you would like to drop off or want to check out the bargains available, CILT's friendly on site-team are there to help you. Stop at the top of the rise at the approach to our flash new building and someone will come to assess your donations.

Any unusable items or general rubbish will need to be disposed of into the rubbish compactor and standard Council charges will apply.

The Goldmine team and the Coromandel Independent Living Trust would like to thank the local community and their project partners for all your support. Without it, the venture would not have come to fruition.



"Goldie" – our Tin woman mascot!

**We now have a solicitor in
Coromandel town every Tuesday**



BRENDA FLAY, SOLICITOR: Travels to Coromandel on Tuesdays.
Please phone the Thames Office (868 8680) for appointments.

PARTNERS: Hayley Green and Brenda Flay

Thames Office: 611 Mackay Street, P.O. Box 31, DX GA25514, Thames

Phone: 868 8680 **Fax:** 868 8718 **Email:** pjo@pjolaw.co.nz

Coromandel Office: Tiki House, Tiki Road

Our services:

PLANNING:
PROPERTY:

COMMERCIAL:

Asset protection, estate planning, family trusts and wills
Negotiation and advice on all matters related to the sale and purchase of land, buildings and rural property refinancing. Separations and relationship property
Company formation, sale and purchases of businesses, leases, dispute resolution, employment and related matters.

THAMES

WHITIANGA

COROMANDEL

Greetings from the Coromandel Community Market

By Liz Kershaw

Summertime and the weather's been breezy!

I hope by the time this goes to print it's warm with light breezes and rain at night but not on Friday mornings.

Thank you Ernie for your letter. I have to agree with you that the public has a right to use their local reserves, within reason, especially as the Samuel James Reserve was originally donated to the Coromandel people by the James family. If those wanting to use it are offering something such as a community market that would benefit locals and visitors alike, why not? (We may be allowed to use it but the cost would be prohibitive). Just hope our little ones won't have to pay to use the swings in the future...

Anyway, the market is rockin' and rollin' downtown by the BNZ, and good feelings abound.

Although the Reserve was certainly a thought and would have been more central, we are no longer looking for a change of venue.

Here's a profile of Zara Vause who has been a stallholder for a year and a half.

Zara makes homemade sweet treats and crafts, delicious fudge, cakes and slices, as well as handmade sketchbooks and notebooks, and has recently started making scented candles, all very reasonably priced.

She is studying for a Bachelor of Arts and learning Japanese language by correspondence. The market is a good way for her to save and slowly pay her way through school.

Zara loves meeting and talking with the other stallholders locals and tourists as well as seeing what other people have on their stalls. She says "the creativity and talent of our community is amazing".

If you're new to Coromandel Town, remember to pop down to view our interesting, varied, home made and home grown produce and creations on Friday mornings by the BNZ.

Some of our old customers are still figuring out where we are – so please let your friends and visitors know that we're next to the BNZ, opposite Umu, on Friday mornings 8.30am to 1pm.

Finally, big thanks to all our customers for your ongoing support and custom!

From us stallholders at the market.



Coromandel Family Health Centre

Hi everyone, hope you're enjoying the warmer weather.

Can everyone please remember to update any change of contact details with reception.

Ask us about Manage My Health, our secure online patient portal.

Ladies, are you overdue for your cervical smear? Make an appointment with Keely today!

The HPV vaccine is now fully funded for all people aged 9-26.

What is HPV?

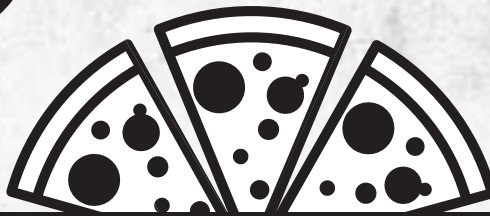
Human Papillomavirus (HPV) is a common virus spread by skin to skin contact. The initial infection occurs soon after sexual debut. It causes genital warts, but more importantly is linked to 99.7% of cervical cancers and 50%-90% of cancers to the male and female external genitalia and mouth.

Motto for New Year: it's never too late to quit smoking.

#newyearnewyou

- INTRODUCING -
GIVE A LITTLE SUNDAYS

\$10 PIZZA SUNDAYS
EVERY SUNDAY 3PM-7PM



\$1 from every pizza is donated to a local community service.

NO TAKEAWAYS SORRY



STAR & GARTER
HOTEL

CONDITIONS APPLY

Indian Motorcycles visiting the Coromandel in February

By Miles Landon

The Indian Owners Register of New Zealand will be visiting the Coromandel in February. We formed as a group of enthusiasts some 30 years ago and hold an annual rally alternating between the North and South Island. It's been a long time coming but finally the Coromandel is our next destination.

We have 160 members across the country and a handful from overseas. We are hoping 40 plus bikes ranging from 1918 through to the late 40's Chiefs with a sprinkling of Scouts and Army Indians in between will come on the Coromandel rally.

On **24 February** the riders will converge upon the Tapu Motor Camp from different parts of the country around mid afternoon and settle in. Saturday morning we will be heading to Coromandel Town to experience the Barry Bricknell legacy. We will then be parking up at the Star and Garter for a lunch stop before heading over the hill for another stop at the Whitianga Wharf. It would be great if people who are interested would vote for people's choice. A ballot box will be available to do so and a special prize will be awarded at prize giving Saturday night over at Hot Water Beach, our final destination.

We are looking forward to the winding roads and showcasing the Coromandel to the other members from the club

A brief history

In the Spring of 1901 with wooden rims yet pneumatic tyres, a single cylinder, chain driven machine nicknamed The Camelback was born. And the name Indian went from strength to strength. By the end of 1902, 143 machines had been sold to the public, and by 1903 they had formed an Indian Racing Team which placed 1st, 2nd and 3rd in the 1911 Isle of Mann TT.

Production numbers increased steadily each year. By 1913 Indian had rear sprung suspension and an electric starter. This was



only let down by the battery technology of the day.

From 1914 to 1923 Indian emerged as the giant of the world's motorcycling industry under the name Hendee Manufacturing Co. These were the golden years of the company.

It was around this time a brilliant engineer, an Irishman, Charles B Franklin was recruited into the company. He went on to develop the now famously known Franklin designed Indians. The Scout in the 1920's, the Chief and the Big Chief in 1923, and the beautiful 101 Scout from 1928 thru 1931.

The Big Chief, primarily designed for sidecar work, became a popular bike of choice for bootleggers of the day during prohibition as it was capable of speeds in excess of 90mph. It had the throttle on the left-hand side and this found favour with the police as they were able to draw their weapon and fire their gun with the right hand whilst maintaining acceleration with their left hand.

The smaller Scout was a popular choice of the general public with its dependability and ruggedness. The 101 Scout had a stretched frame which lowered its seat height and centre of gravity. The 101's today have a cult-like following with its own club. These bikes are art on wheels with legendary handling. Riders can do figure eights with no hands on the handlebars due to their balance and poise.

But the Americans still loved the 1200cc Big Chief. Its sheer cubic capacity kept it as a firm favourite.

By the 1930's and

with the depressed economy Indian manufactured a 4-cylinder motorcycle and are the most collectible and therefore most expensive to acquire today. There was a Sport Scout 750cc also made.

With the advent of the 2nd World War, Indian readied itself to aid the war effort. Some 44,000 machines were made during this time. A de-tuned, de-stroked Scout named the Army or 741b was the mainstay utilised as a despatch bike. It was said these bikes' cylinders would glow red hot after riding them running on kerosene. They also made a thousand experimental traverse V-twins called the 841 and some military Chiefs.

In 1945, a group headed by Ralph B Rogers purchased a controlling interest in the company. The new management began to manufacture lightweight motorcycles to compete against the rising tide of imported bikes. The models 149 Arrow and Super-scout 249 introduced in 1949 and the 250 Warrior in 1950 were inferior and had a lot of mechanical issues. This problem and other bad management decisions really were the death knell of the company. Production of the more traditional pre-war Indians was extremely limited and the brand ceased to exist in 1953 as the company was bankrupt.

Various organisations have tried to perpetuate the Indian brand in subsequent years with limited success. Polaris in 2011 bought the brand and have so far succeeded and marketed three models that reflect Indian's traditional styling.

Long may they carry on.



A Meal at Your Place

Earn money sharing your meal with travellers

www.mealbook.nz



Coromandel Contract Bridge Club

By Judy Bronlund

Welcome to our club competitions for 2017. Our first night of play will be on the Auckland Anniversary Monday evening, this will be a fun night with the first night of competition starting the following week on Waitangi Monday evening. We meet at the St John rooms. New members are welcome to join us as are visitors to our town. Please contact Val for further information.

Contacts Val (07) 866 8730, Lyn (07) 866 8858

Chartered Accountants The Hauraki Taxation Service Limited

Full-time Accountants in
Coromandel Town since 1995.

Open Monday-Friday 9am-4pm

COROMANDEL 07 866 8660 THAMES 07 868 9710



Nigel, President of Coromandel Lions, accepting the generous donation of \$800 from Kelvin Ricketts of the Admiral Arms. Included with the donation was a large food hamper which was gifted to the Food Bank by the Lions

Lions Club

By Lion Lyn

A magic start to the new year with a fantastic day for the Keltic Fair. A big working bee for firewood followed by another mussel fritter fundraiser on Anniversary weekend will conclude our official month off! February will be business as usual starting with our annual BBQ then a business meeting on the 3rd Wednesday. If you feel that the Lions could help with something, then please contact sec David (07) 866 7104 as to how to go about meeting the criteria needed, so you can be added to the agenda.

Keltic Fair Thank You's

By President Nigel

Heartfelt thanks to our Lions Club members, and wives, for their great effort in preparations on the previous days, and making mussel fritters for the Keltic Fair. We sold out by 2pm, such was the demand. Also thanks to Kian Strongman and other youth, for their valued help on the day.

Thanks also to Gilbert James for the mussels; Coromandel Four Square; Coromandel Meatkeeper; Tony Erceg for ice; and Keltic Fair Committee for the great site; Coromandel Refrigeration for the Chiller unit; Strongman Diesel and Allen Agar for fuel and generators.

This is our main fundraising for the year.

Mucho Gracias!

P.S. Look for us on Facebook.

Reflections

By Beryl van Donk

As I walk each day I see
the new growth.
All silently and stealthily
upward and onward.

Bulbs, once in darkness
hidden and silent,
Now leap into life thrusting
beautiful flowers to
Warmth and sunlight.

Could my soul could be like that?
dark and hidden
Then You touch me Lord
and I awaken to life
and sunlight, and the warmth
of your everlasting love.

Poetry
SPOT

Coromandel Business Association

By Christine Petrie, Secretary

Reports from many business owners in town is that the summer season started really well. This is fantastic news for the wellbeing of our whole community. We are hopeful that this busyness will continue well into autumn as domestic and international tourists recognise that our region is a great place to visit, explore and relax in.

The plans for upgrading the security camera system in the central business district are progressing well. The Coromandel Bizarre Trust have agreed to donate funds to cover a significant portion of the costs of the project subject to some conditions being met. The TCDC have also allocated some money from their community grant fund for this purpose, once again subject to certain conditions. The CBA is grateful to these donors and is reasonably confident that we will be able to meet these conditions. We look forward to sourcing the remaining funds needed so that the project can be completed by mid-2017.

The CBA exists to promote the welfare of all businesses in the region, regardless of the industry they are in. Our first meeting for 2017 will be held on **13 February** and in this meeting we will agree on the priorities for the CBA for the year. All members are encouraged to attend and have a say in the future direction of the CBA.

Mayor Sandra Goudie has agreed to meet with the CBA to discuss business priorities for the region. Members have been advised by email of the dates for both the special general meeting to prepare for this and the meeting itself. If you have not received this information please email me at corobusiness@gmail.com

YOGA & BODY BALANCE

Wednesday 8.40-9.50am

Thursday 5.30-6.40pm

At Trust Waikato Events Centre Coromandel Town (above the pool)

FRESH, FIT & FUN

Single class \$10, x10 Special \$80

Bring along your mat (yoga/camping etc) or blanket,
water and comfortable clothing (socks to keep feet warm).

No experience required – all welcome!

Starts 25 January.

Call or txt Tina 021 20 19 750



DYNAMIC TREE CARE

Professional tree management services

www.dynamictreecare.co.nz

027 451 2224

07 866 8177

Climbing - Felling - Removals - Hedges - Chipping - Mulch - Pruning - Qualified & Insured

/Richardsons

Real Estate Ltd MREINZ
Licensed REAA2008

Meet the team... Kim,
Robyn, Melissa & Laurie-Ann



- The "Tree House" Wyuna Bay
- Stunningly private on 2,630m2
- Wonderful harbour/bush views
- 3brms, carport, storage studio
- Surround decking. **\$669,000**



- A brilliant little lifestyle block
- 2.46ha of pasture, trees/bush
- 3brms, large lounge (fireplace)
- Kitchen/dining, great decking
- North side of town. **\$595,000**



- Ohh so handy to the township
- 759m2 corner section, carport
- 3brms, BBQ/covered patio
- Large garage/wkshop/bathrm
- Fruit/citrus trees. **\$395,000**



- Permanent/rental in Lillis Lane
- Fenced 755m2 R.O.W. section
- 3-4 brms, office area, decking
- Small storage shed. Tenanted
- Full concrete drive. **\$390,000**



- Beachfront at Sandy Bay
- 2 x s/contained units + studio
- Flat 835m2 fully fenced section
- Buy with family or friends
- Large garaging. **\$865,000**



- A great little starter or rental
- Weatherboard with tile roof
- 3 brms, wood flooring, decking
- Open-plan living, fireplace
- 457m2 section. **\$310,000**

/Richardsons

Real Estate Ltd MREINZ
Licensed REAA2008

Proudly making real estate
a reality for Clients and
Customers for over 56 years

www.richardsons.co.nz

151 Kapanga Road, Coromandel

Ph: 07 866 8900 - Fax: 07 866 8513

Kim 021 533174, Robyn 021 448975

Melissa 027 2498287, Laurie-Ann 027 9276368



- A holiday cottage & 'man cave'
- 2 x adjacent Titles near wharf
- 1 brm, open-plan living, deck
- Harbour, reserve & bush views
- Plenty of parking. **\$395,000**



- Fantastic section close to town
- 1,196m2 with rural vistas
- Great future building platform
- Old storage shed, landscaping
- Currently under offer. **\$235,000**



- Home of substance & quality
- 4brms, 2 bthrm, spacious living
- Double garage, harbour views
- Decking, flat 2,498m2 section
- Walk to township. **\$975,000**



- Leisure near popular Long Bay
- Great decking for entertaining
- 2brms, large lounge (fireplace)
- Car & boat parking, rural views
- Walk to the beach. **\$390,000**

- First bay north of Coromandel
- Immaculate presentation!!!
- 4brms, 2 lounges, 2 bathrooms
- Office, single garage, fenced
- Superb landscaping. **\$579,000**

- Breathtaking gulf/island views
- 39.5ha situated at Papa Aroha
- Large garage, plenty of parking
- Pasture, fencing, native bush
- Total sanctuary!!! **\$920,000**

Animal Rescue Thames

By Alice and John Parris

Thank mews to those who have donated cat and kitten food and biscuits, bedding and towels for the rescue kitties. It is truly appreciated by our rescue felines. Sachets are a blessing and provides them all with a tasty treat and a meal that is different to the canned.



Nothing new in – we had one kitten that was to come in but word spread about the kitten and it was homed before it got to us. This was brilliant as the unit has stayed completely “as is where is”, however with no movement or homes for our older kittens and cats it is frustrating and sad that these beautiful animals remain homeless. One group of girls have been here now two years, not their fault at all, and we will keep them as long as it takes to rehome them. We have no room to put teen or adult felines at all, and only one unit for small kittens, which is the same place we were in last year.

We have a few young kittens all now three months old who are all doing alright, very rumbucious lot who still enjoy a comfort stop on the bottle, which is most unusual but they enjoy the sooky comfort stop and continue on to tear around the house with the older cats as well which means that anything in their path is trashed. The favourite toy currently is a marshmallow – defying any explanation of why that is a darn good toy, when balls, pom poms and the normal cat toys are left. One kitten had the mighty kill of a baby’s bottle brush, another odd toy to wreck. But they are kittens and they are having a party of their own.

We had one person view the cats who spent a couple of hours talking and patting them which was good for the cats to have someone else there with them, this hasn’t led to an adoption but we were grateful that they all got pats from someone else.

Water – for those who live and use river water or take dogs to

the rivers – be cautious – in this hot sticky weather algae is flourishing and can be both toxic and lethal to all animals. For dogs who have been swimming in rivers make sure you wash them afterwards to ensure they are not affected. For cats ensure their water is clean, fresh and, if you are on river water, use boxed or bottled water for your pets.

Wanted – homes for our older felines – most of them are in pairs and need to remain that way but discounts for two are available. Also cat and kitten food, towels, and pillows are welcomed too.

Meow for now.

Any enquiries contact Animal Rescue Thames, 532 Thames Coast Road, Te Puru, RD5, Thames (07) 868 2907

Coromandel Town Information Centre

By Sandra Wilson, Manager

A very big belated happy new year to you all. I would like to say big thank yous to Paul, Karen, Ross, Jean and the crew from the Work Co-op, Frank, Malcom, Ray, Con, Margaret and Joan, Bronnie, Karen, Natalie, and you for supporting our centre.

Re-acquaint yourself with your town, its beaches and walks over the rest of the holiday season. When going for walks in the bush make sure your shoes, walking poles, buggies, dog paws and bike wheels are clean before you venture out and also after. Making sure the spread of kauri dieback does not happen here.

The 360 ferry to Auckland runs every day except Wednesdays from **6 February**.

We also have a range of greeting cards (blank inside) depicting some of our iconic buildings in town ie: Information Centre, Meatkeepers, Star and Garter and the pharmacy. Only on sale at the Information Centre for \$4.99 each.

We now limit wifi use to ½ hour and remind you not to download, music, photos etc as this causes problems to our operating services and also other uses.

Remember to check out our website: www.coromandeltown.co.nz for events happening in town.



Peninsula Pest Services Ltd.

- We are trained and equipped to control all insects and rodents and other Creepy Crawly Critters.
- Both residential and commercial maintenance programs to suit the individual customer and business.
- Meth checks, sampling and lab testing.

Stephen Clay

Approved Handler Urban Pest Control

Ph **07 866 5307**

Mob **027 778 8836**

Email sharonc@xtra.co.nz



Peninsula Home Services



- Wardrobe in-built free-standing sliding doors and organisers custom made to size
- Glass splash backs - colours to suit with optional graphics

PENINSULA ELECTRICAL SERVICES LTD

Commercial & Domestic Electrical Contractors



RAVINDER & SUE RAJ

Registered Electrical Inspector

P.O. Box 109

Coromandel

Telephone (07) 866 8166

Free Phone: 0800 4 Electrical (0800 435 328)

E-mail: ravinder@e3.net.nz

1750 S/H 25

Coromandel

Fax (07) 866 8162

Mobile (0274) 738 734



Small Motor Repairs

**Come along and see us in our new shop at
18 Kapanga Rd (old 4Square)**

Rob & Carolyn 866 7865 or 021 618 601

Ann's Good News, Naturally

By Ann Kerr-Bell



What Drives Your Stress?

Stress acts to motivate and sharpen your focus in situations where immediate action is required.

The intensity or urgency of that situation determines the intensity of that stress response. For example, if you are faced with danger, your body switches on your acute stress response, (also called the fight or flight response) to give you a burst of energy to help deal with the danger by either running away or fighting back.

To deal with long term or chronic stress, your body releases cortisol, a chemical that enables you to stay in an active, attentive state for a long time, to deal with the stress at hand. Chronic stress strongly affects every system in your body and long term or poorly managed stress can have serious health consequences. Stress may affect: cardiovascular health, digestive health, energy, hormonal balances, sleep, mood and mental health.

Therefore we need to manage stress and our response to stressful situations to ensure balance and health.

Everyone is unique in how they respond to and experience stress. I can help you to identify the main drivers and causes of your stress. They may include:

- **Inflammation:** Inflammation in the body can cause changes in mood and behaviour by disrupting hormones.
- **Oxidative stress:** It's important to identify the cause of your oxidative stress as this can cause damage to the cells in our body, and lead to such things as fatigue and poor concentration.
- **Gut disturbances:** Dysbiosis, or an imbalance of unhealthy bacteria in the gut, is a major driver of stress and its consequences in the body. An appropriate treatment plan to address dysbiosis is essential if a sustained health outcome is expected.
- **Sex hormone disturbances & thyroid dysfunction:** If hormone imbalances are affecting your ability to cope with stress, I can discuss using some natural remedies to help restore proper hormone balance.
- **Obesity:** Being overweight, depressed or anxious can often lock you in a vicious cycle. Poor mood control affects poor eating and exercise habits. I can assess you for a weight management programme.
- **Poor sleep:** If you are not recovering each night from the previous day properly, then the body cannot function at 100%. By identifying imbalances and deficiencies in hormones, neurotransmitters or other contributing factors to your sleep patterns, I can choose the necessary supplementation or lifestyle changes to increase the quality of your sleep.

What to do?

- **Symptom Relief** – Nervous tension, irritability, mild anxiety – It is important to get your symptoms under control before addressing the real drivers or causes.
- **Neurotransmitter Support** – I can identify your neurotransmitter imbalances and deficiencies and effectively turn around your health issues. Under stress, the production of neurotransmitters is affected, leading to changes in mood and cognitive function, causing disease.
- **Healthy Eating to Support Stress** – Natural nature made food is your fast medicine, (manmade food is your slow poison)
- **Stress buster Lifestyle Tips** – Exercise, getting back to nature, listening to music, correct breathing, enjoying your favourite pastime, eating small amount of dark chocolate, all help you to de-stress.
- **Herbal and Nutritional Support** – Herbs are powerfully medicinal. Certain nutrients are used up more quickly under times of stress.

Natural Medical Centre

The natural alternative for all your health requirements

At Tiki House,
Coromandel.

For appointments,
phone or text: 021 046 1647
or email: annk-b@ps.gen.nz
www.naturalmedicalcentre.co.nz

Ann Kerr-Bell

B.Hlth.Sc. (Comp.Med.)
Adv.Dip.Naturopathy
Adv.Dip.Med.Herb. MNZAMH
Naturopath
Medical Herbalist
Nutritionist
Massage Therapist



Mō tātou o Hauraki

Affordable medical & wellness
services for everyone in our community

Clinic Fees

| GP | NURSE |
|-------------------------|-------------------------|
| Under 18s - FREE | Under 18s - FREE |
| 18-65 years - \$17.50 | 18 + years - \$10.00 |
| 65 + years - \$10.00 | |

FREE

Under-18s sexual health checks

NURSE PRACTITIONER

Our Nurse Practitioner Ashleigh
Battaerd is on Maternity Leave for
the next six months

Kaiwhakaora - Māori Healer

Jim Kingi
every 2nd Thursday
Upcoming clinics
Feb 9, 23; March 9, 23

Foot Clinic

Ruth Wells
every 2nd Tuesday

Stay safe over summer

- Drink sensibly
- Take care around water
- SLIP, SLOP, SLAP and wear a hat



225 Kapanga Road, Coromandel 3506
Ph (inc a/h): 07 866 8084
Email: coromandel@korowai.co.nz
www.korowai.co.nz

Taizé Singing

By Sally Tennent-Brown

Taizé? Oh yes, I know... I've visited there.... I am often surprised at how regularly this response arises as I talk of our "Monday night Singing" to newcomers or visitors passing through. And the faces of these people light up with enthusiasm as they speak, clearly recalling an experience that has meant much to them.

Thus are global communities born, and thus the numbers of our little Coromandel group are swelled for an evening, a few weeks, or longer...

I've not been to Taizé, but the music we sing from there is truly beautiful, and it is patient with us in our attempts to learn what it takes to do it justice. The rewards for our perseverance are not only aesthetic and personally meaningful, they are physical as well – breathwork and sound having long been linked with a sense of well-being.

Laughter often finds its way to our gatherings too. As does chocolate. We are a disparate bunch with a wide range of life experience to bring to these evenings – warm-ups are fun and playful. Confidence to play with ones voice builds over time.

There is to be a weekend of Taizé singing at the end of February, culminating in song, reflection and contemplation in the Sanctuary at Mana on **Sunday 26 February**. All are welcome. Perhaps we will see you, at 9.50am, ready for the bells at 10.00am.

We continue to meet at the Anglican Church Hall on Tiki Rd, Monday nights, 7.30pm.

To join with us or know more, please phone Sue on (07) 866 8833

Coromandel Embroiderers Guild

By Diann Cade

A New Year! Resolutions? I am going to finish the projects I have started... but wait, there is more!

There is a lot more to be offered this year at Guild Days and workshops, with possibly three visiting tutors. Then the Great Escape in March which always offers attractive opportunities and our Retreat in July. One has to join in and glean a new technique or start an even MORE exciting project, whichever, taking every opportunity to stitch with a delightful group of women so passionate about what they do.

See you all at St John Rooms, **Wednesday 1 February** 10.00am for morning tea with the formal meeting starting at 10.30am. Bring a friend you have found over Christmas that shows an inkling of an interest in embroidery and introduce them to the friends you have made. New members are most welcome.

For further information about the Coromandel Embroiderers Guild and related activities contact Margaret Burgess (07) 866 5769

**Scott Simpson
MP For
Coromandel**

One of the great joys of a summer break is the chance it provides to do things we don't usually have time for.

A highlight of my Coromandel summer was walking the beautiful Matamatahakeke track up behind Waikawau beach north of Kennedy Bay with family members and friends.

It's a track that epitomises the Coromandel.

Beautiful views, lovely bush, multiple stream crossings and enough uphill sections to get the heart rate moving. I was impressed with the way DOC had maintained the track and the clear evidence of significant predator control being undertaken by volunteers. The very serious boot cleaning station at the start of the track helped bring home the importance of doing all we can to prevent kauri dieback spreading further.

Sharing the walk with visitors both local and international bought home for me yet again that even in the relatively remote parts of the Coromandel, people are prepared to invest time and energy in exploring what is so unique in our region.

We still have large numbers of visitors on the Peninsula. Most are Kiwis but there are many from overseas too. Recent figures show 6.5% annual visitor growth and November 2016 spend by tourists was up 12.3% over 2015. This is fantastic news for all our business operators and reflects the record numbers of tourists visiting New Zealand.

It's the busiest time of the year for local businesses and also for our volunteer emergency service providers. Thank you to all who go the extra mile keeping us safe and who ensure we have access to the services we depend on.

Please continue to take care on the roads, in the bush and at sea while enjoying all that our region has to offer during these summer months. The road toll is not just a number. Every road fatality represents a life needlessly lost with family, friends and communities grieving. We've had some bad accidents over the holiday period and too often we seek to blame every cause other than the human factor. Slow down. Take care. Be cautious. Wear seatbelts. Come back next year.

The year ahead

We're facing a very uncertain international environment this year. But locally our economy is growing at a vigorous rate. Together with falling unemployment and rising government surpluses New Zealand is headed in the right direction under the new leadership team of Bill English and Paula Bennett. We are reaping the benefits that come with economic growth and I'm really looking forward to the opportunities that flow for our region.

My office is open again and I'm back hard at work around the electorate. Parliament resumes in early February. I'm looking forward to what will be another busy and full year both here in the electorate and at Parliament.

**Steelcraft Ltd**
Precision and general engineering

Steve Norris
Paul Baylis
75 Wharf Rd
Coromandel
Phn/Fax 866 7710

Scott Simpson 614 Pollen St. Thames
MP FOR COROMANDEL 07 868 3529
www.scottsimpson.co.nz

"A large part of my job is helping people. Please contact my office for an appointment"

email: mpcoromandel@parliament.govt.nz

Authorised by Scott Simpson, 614 Pollen St, Thames and funded by the Parliamentary Service



National
www.national.org.nz

Lots of Events at Mahamudra Centre

By Sarah Brooks

Summer is far from over, and Mahamudra Centre still has wonderful programmes happening to appeal to a variety of interests. If you haven't had much exposure to meditation or Buddhism, did you know there are many types of meditation, such as analytical or visualization? Then you might enjoy learning how to meditate on our beginners long weekend course **3-6 February**. If you're interested in the fundamentals of Buddhist philosophy, try the weekend course on Meditations on the Path to Enlightenment. If you enjoy being creative, come **24-26 February** to explore mindfulness and amateur photography – a comparison of mindfulness meditation and being in the creative "zone", while also learning fundamental photography techniques with practice shooting in the beautiful Coromandel landscape. We also offer free daily guided meditation in the mornings at 8.30-9am in the centre's beautiful meditation hall.

In Coromandel Town, we offer weekly Thursday Guided Meditation. Anyone can join – we meet at Havalona Pyramid on Driving Creek Road (behind the café) from 10-11am followed by socialising over coffee and tea at a local café. No experience necessary, and it's on a donation basis. Or you might want to try our Discovering Buddhism: Presenting the Path course meeting for two more weeks on Tuesdays at 2pm at the Anglican Church Hall. You are very welcome to come even if you haven't attended before, but keep in mind you will have missed a few weeks of material so be patient. These are also on a donation basis.

If you've had some experience with Buddhism, you have the chance to delve into the essential view of emptiness, learning more in depth about How Things Exist, and intermediate course **10-12 February**.

Most importantly, come to our Family Fun Day on **Sunday 5 March**, observing National Children's Day in New Zealand. We'll have a bouncy castle and hopefully an added water slide this year, face-painting, games, guided meditation, and an entire marketplace of local vendors and food. Throughout the day there will be live music, and at 2.30pm there will be a pet blessing ceremony – bring your animals of all shapes and sizes (on a lead or otherwise contained) for special prayers and a blessing from Buddhist relics, and to circumambulate our stupa. Free entry for the entire day, 11am-4pm.

Visitors are welcome to drop by and wander the grounds for a taste of peace and Tibetan Buddhism, and have a complementary cup of tea while you browse in our shop. Please contact us if you'd like more information about any of our events, and we hope you'll come visit us very soon.

retreat@mahamudra.org.nz, www.mahamudra.org.nz, (07) 866 6851

Beginners Yoga With Becks Is Back!

By Rebecca Leaker



After taking a break to have my first baby, gorgeous Amira, I am very excited to be starting up yoga classes once again. Becoming a mother has given me profound new insights into

what really matters in life and the power of the body and mind, which has transformed the way I approach yoga. I am looking forward to sharing these new discoveries in my classes and to be back with all the wonderful people who come along and have shared my joy of becoming a mother throughout my pregnancy and the last 8 months.

I have been a dedicated yoga practitioner for over 20 years in Aotearoa and India and have a passion for making these ancient techniques accessible for everyone. I am a 500 Hour Qualified Yoga Teacher with additional training in yogic relaxation, pregnancy yoga and children's yoga and experience teaching classes for students over 60 and people with mental health issues. I am also available for a limited number of private classes and programmes. In all my classes I aim to share my knowledge of postures (asana), breathing (pranayama) and relaxation techniques in a practical open way so students can gain tools for everyday life.

My Tuesday classes are open to complete beginners as well as more experienced practitioners, each class is catered to suit the needs of those attending. See you soon for another great year of exploring the body, mind, emotions and spirit with humour and compassion, through the ancient science of yoga. All are welcome!

Classes are on Tuesdays starting from 7 February at Coro Gym from 5.30pm to 6.45pm, \$7. Equipment is provided. Phone 027 407 0079 for more information



**Coromandel
QUARRY &
Contracting Ltd**

- All grades of metal delivered
- Driveways, roading, earthworks
- Please call for a FREE quote

Telephone 07 866 8306

email: richard@cqc.co.nz www.cqc.co.nz

**Thinking about a renovation
or new build and need some advice?**

"Duncan is a very calm, reliable person. He gets on well with others and can see his way through problems or challenges."



coromandelconstruction.co.nz

duncan@coromandelconstruction.co.nz
(07)866-7796 021-173-7457

Coromandel's Premium Accommodation, Management, Linen and Cleaning providers..

Luxury Apartments

Holiday Managements

Long Term Rentals



Luxury Apartments

Holiday Managements

Long Term Rentals

Diane Arundel Property Manager

265 Kapanga Rd, Coromandel 07 8668803 0274 361729 office@accommodationcoromandel.co.nz 100% Coro Ltd MREINZ

Adult Literacy Rural Trust

The Adult Literacy Rural Trust has been operating now since 2011 and as with all organisations like this, the longer we go on, the more of a “snowball rolling downhill” effect we are having. The more we do, the more we are able to do!!

Thank you very much to the staff and readers of the Coromandel Town Chronicle for all your support in 2016. There has been a lot of feedback and help from you with computers, coaches and students and we know this will continue in 2017.

We would also like to thank the funders whose generosity has enabled us to keep going with this free service.

There are over 20 new applicants for the next coach training, of course every one of them will need a student. So if you know of anyone that needs help in any way with their literacy, please have them contact us or you do it on their behalf.

Remember, it is free and confidential to the learner and the benefits are life changing.

0800 891 339 admin@adultliteracy.ac.net or message us on Facebook

Library News

By Raewyn McKinney

We trust everyone is enjoying the summer and has had a lovely holiday season.

Now that things are back into the normal routine, it seems a good opportunity to revisit the past year and catch up on some gems that may have gone unnoticed.

Last year we purchased many New Zealand books, on a wide range of subjects.

Here is a sample:



Mountain Rescue by Phillip Melchior

Thrilling tales of search and rescue in high-country New Zealand. Ill-equipped, underprepared, suffering from summit fever or just plain unlucky, a handful of climbers every year fall victim to New Zealand's Southern Alps. Most will be able to look back, learn from their experiences, and think they've had a fortunate escape. Others won't be so lucky. This book tells the stories behind some of New Zealand's most dramatic search and rescue operations in the Southern Alps and their foothills. Some are triumphs, others tragedies, but all reveal the skill and heroism of our volunteers the ones who show up when good days in the mountains go horribly wrong.

A Road Tour of American Song Titles – From Mendocino to Memphis by Karl du Fresne



Like most New Zealand kids in the 1960s, Karl du Fresne grew up listening to songs about American towns and cities: Kansas City, El Paso, New Orleans, Detroit and Tulsa, to name just a few. He found himself wondering what sort of places they were and what had motivated such illustrious

pop composers as Jimmy Webb, Hal David, Neil Sedaka and Chuck Berry to write about them. A career journalist, former musician and keen amateur musicologist, he eventually decided to find out for himself. Thus was launched a serial pilgrimage that took him to 24 towns and cities, from Abilene to Wichita and Memphis to Mendocino. Each chapter

is devoted to a specific hit song and the town that inspired it. Du Fresne combines information about the songs – who wrote them (and why), who recorded them, how well they did on the pop charts – with often quirky personal observations about the places themselves and the characters he encountered there.

Terrain: Travels Through A Deep Landscape by Geoff Chapple



New Zealand's many distinctive landforms are packed into a small space. Geoff Chapple, author of *Te Araroa – The New Zealand Trail*, set out on a year-long journey to find out why, and to seek out the shifting forces that shape them. For company, he chose to walk with geologists and the artisans who

work the rock. The journey took him back through geology's global history and onward from end to end of New Zealand. Terrain is the result a lucid, personal and sometimes funny account of New Zealand's most astonishing landscapes. Their stories and revelations are a prompt to look more closely at the ground we walk on.

Seelenbinder: The Olympian Who Defied Hitler by James McNeish



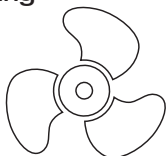
This is during the 1936 Berlin Games, the notorious summer festival designed to persuade the free world that the leader of Nazi Germany is a man of peace. Werner Seelenbinder's mission is an unknown story; the defiance and courage of the only Olympian in the resistance, subsequently concealed by the Americans in the Cold War and blotted out in modern postwar Germany. All the characters in Seelenbinder are real; all the main events described did happen. But amid the preparations for the coup and its nightmarish end, there unfolds a riddle of fact versus fiction.

The library is open from 10am to 1pm on Monday, Tuesday and Thursday; 10am to 4pm on Wednesday and Friday; and 10am to 12 noon on Saturday



COROMANDEL MARINE ENGINEERING & OUTBOARD SERVICE CENTRE

- All makes, model & inboards serviced.
- Full diagnostics for OPTIMAX, SUZUKI, JOHNSON, E-TEC, EVENRUDE & YAMAHA available.
- Retailers for Saltaway, outboard oils, Prolan products & marine spark plugs.
- Aluminium, stainless welding & general engineering.



Telephone
Workshop/office:
07 866 8004

Grant: 028 2580 2351
Jackson: 021 059 7542

116, The 309 Road, Coromandel – 1km from the main road.



Driving Creek Railway

Adventures in Art, Engineering and Conservation

Tours for 2 adults or more will be at the following times until 30 April:
9.00am, 10.15am, 11.30am, 12.45pm,
2.00pm, 3.15pm, 4.30pm and 5.45pm
(please ensure that you arrive 20 minutes prior to these departure times)

We also have a **Glow Worm BBQ Tour**, (until 28 February only) that leaves at 7.00pm and returns at approx. 9.30pm. **Bookings for this tour are essential.**

Bookings advisable for all tours
Phone 07 866 8703 or 0800 DC RAIL
Email: bookings@dcrail.nz www.dcrail.nz
380 Driving Creek Road, Coromandel 3506



Our Coromandel

News from Thames-Coromandel District Council



FEBRUARY, 2017

Coromandel Harbour Project

Sugarloaf Wharf

The proposal to expand the Sugarloaf Wharf by the Coromandel Marine Farmers Association (CoroMFA) is now progressing following conclusion of the zoning appeal by Waipapa Bay residents. Council continues to work collaboratively with the mussel industry on operational and compliance improvements to address health and safety issues and congestion at the Sugar Loaf Wharf. Council will also continue to liaise with the Waipapa Bay Protection Society through the process. The signage at the facility has been replaced to provide clearer differentiation of user areas.



Sugarloaf Wharf.

Jacks Point Boat Ramp

The Coromandel-Colville Community Board has been updated on the revised design and Annual Plan submission for the proposed new ramp and pontoon at Jacks Point at an estimated cost of \$700K+. Consideration of the

project will now proceed to the Annual Plan Process with determinations due in June 2017.

Hannaford's Wharf

The resource consent application by the Mussel Kitchen for a park and ride facility for Hannaford's Wharf was approved, but is currently under appeal.

Coromandel Harbour Strategy

The Expression of interest (EOI) for potential partners on the Inner Harbour concept closed late last year. We are now evaluating the 12 proposals and are in discussions with the short-listed parties. An update to Council and stakeholders is due in February/March.

The wider Marine and Harbour Strategy is nearing completion and will be further informed by the outcomes of the EOI process.

www.tcdc.govt.nz/coroharbourproject

COROMANDEL COMMUNITY REUSE CENTRE (CCRC) IS A COMMUNITY 'GOLDMINE'

A community re-use centre has been in the pipeline for some time and is now open. If you would like to help, please phone or text Carol Sutherland on 0274 864 043.



Coromandel-Colville Community Board UPDATE

Coromandel-Colville Community Board Meeting

First meeting for the Coromandel-Colville Community Board is Tuesday 28th February at the Coromandel Council office.

NZ Taste Magazine

Coromandel and Colville both got mentions in the New Zealand Taste Magazine's Jan/Feb edition. The magazine's sub-editor and writer Nick Russel visited the Coromandel to do a story on the Coromandel Food Trail and was particularly taken with the Coromandel Mussel Kitchen and the Hereford 'N' a Pickle in Colville. A copy of the Food Trail Guide can be found on our website www.tcdc.govt.nz/foodtrail or at your local i-Site and all Council offices.



events



Leadfoot Festival

280 Link Road, Hahei

www.leadfootfestival.com

4-5 Feb



Coromandel Mussel Festival

Coromandel Mussel Kitchen,

Cnr SH25 and The 309 Road

www.musselkitchen.co.nz

5 Feb

For more events see
www.thecoromandel.com/events

Summer Kerbside

Our Summer 2016-17 collection schedule finishes 11 February 2017 and Refuse Transfer Station summer trading hours finish Sunday 26 February.



www.tcdc.govt.nz/kerbside

The Coromandel Town RTS on Hauraki Rd SUMMER OPENING HOURS

| | |
|-----------------|-------------------|
| Mon - Fri | 11.00am to 4:30pm |
| Saturday | 10:30am to 5:30pm |
| Sunday | 10:30am to 6:30pm |
| Public Holidays | 10:30am to 6:30pm |

www.tcdc.govt.nz/rts



Get our free eNewsletters!
www.tcdc.govt.nz/subscribe



www.facebook.com/ThamesCoromandelDistrictCouncil

www.coromandel.govt.nz

customer.services@tcdc.govt.nz

Private Bag, 515 Mackay St, Thames

Phone: 07 868 0200

Viewers
Choice
winners

Coromandel Patchwork and Quilters

By Sharon Currie

We have celebrated the end of the year with our annual Quilt Show held in the Citizens Hall from 29 December to 3 January. The results of our raffles are as follows:

The Scratchie Raffle was won by Barb Excell and the Groceries by Colleen Small. Our Raffle for the quilt will be drawn in February.

Winners for Viewers Choice were 1st Colour Explosion made by Val Spicer, 2nd Great Granny Squares made by Jill Wilson and 3rd Kimono made by Linda Sampson. Thank you to all those who voted for their favourite quilt. Also a big thank you to all of you who made the time to come and see our quilts.

Our meetings will start again on **Monday 6 February** and our AGM will be held on **Monday 20 February**.

Our meetings are held on 1st and 3rd (& 5th) Monday of the month 9.30am-4.00pm, St John Rooms, Tiki Rd, Coromandel. President Margaret Sinclair (07) 866 7104, Secretary Barb Excell Ph (07) 866 7493

SeniorNet

By Loes Beaver

A New Year has started for SeniorNet members. We meet every Thursday 2.15pm in the Music Room of Coromandel Area School.

Our purpose is to assist people with electronic problems, so if you think we can help you do come along every Thursday from 19 January.

Contact Loes (07) 866 8053

WANT

NATIVE NURSERY & EDIBLES
WAITAIA RD, KUAOTUNU

A wide range of beautiful natives,
palms and fruit trees.

Potting mix, compost, mulch, chook manure.

Open Thursday- Sunday 9-5 or by phone appointment

Please phone Claire & Colin Hill 07 869 5910

Grey Power Coromandel

By John Rabarts, President

Well here we are, Christmas and New Year have come and gone, Anniversary weekend and Waitangi Day left in the dust. Literally if you happen to live, as some of us do, out in the sticks, beyond the dust laying effect of tarseal over the roads. Our choice I know but that doesn't make breathing any easier, while we enjoy the sea and the bush around us – which has to be massive compensation.

Last issue we gave some tips for safety and security of your property. Here's hoping you weren't burgled over summer. Now I will look at some aspects of personal safety. Most of this applies whatever your age, not just us "oldies". For women (mainly). Hold your handbag firmly and carry it so it can't be snatched from behind or grabbed by someone in a passing vehicle. When shopping, if possible, park where there are lots of people around – like main street Coromandel in summer! If you do need to leave your purse in the car, lock all the doors and make sure that your purse (and other valuables) are hidden. Never leave your purse unattended in the shopping trolley or while loading groceries in your car. Have your car keys out and ready to unlock when you get back to your car. Carry your purse with you when you return the trolley. Most important – don't leave it in the trolley, but I guess you already know that! Now with purses out of the way. For all of us. Only withdraw small amounts of money from a money machine. Stand where you can see people around you, hide your pin number as you put it in and put your money away quickly – in your wallet, pocket, or dare I mention – your purse. When using a public telephone face the people passing to prevent a thief approaching behind your back. If the phone booth has a door, close it behind you. Don't you just love the return of the old red phone boxes? If you think someone might be following or watching you, and you feel uncomfortable, walk faster and head in a safe direction. Back the way you came if that is safest. Look for someone you know and tell them you are worried, and ask if they can walk with you.

Awareness is also enhanced by knowing those around you at home, in your street or community. Help to form a Neighbourhood Support Group in your street or rural area (if you live out in the dustlands). Police have a pack of information to help you get a group going.

Next Grey Power Coromandel meeting, St John Rooms, Tiki Road on **Thursday 16 February**. We gather at 1pm, for meeting to start at 1.30pm. For members and anyone over 50 who is interested in what Grey Power can do for you – or maybe you would like to do something for Grey Power. Raffle organiser, committee member, treasurer, membership secretary maybe? (one position at a time please – don't rush us). Welcome all.

Membership enquiries Dolly Welch, (07) 866 8852

JAMES & TURNER 2014 LTD

FISHING • MARINE • TOOLS • CAMPING
PAINT • HARDWARE • GIFTWARE • GARDENING



GRANT WEBBER

jandt@vodafone.co.nz

Ph: 07 866 8805 Fax: 07 866 8969

PO Box 16, Coromandel 3543

131 Kapanga Rd Coromandel Town

Like us on Facebook - search "James & Turner"



Coromandel Garage Ltd

What we offer:

- Service and repairs on all makes and models
- WOF's
- Motorcycle WOF's

- Pensioner WOF's \$40
- Call out's & tow in's
- LPG bottle swap & filling
- Car & trailer hire

– All tyres
– Fuel
BP Card Accepted

*Best Value
for your money
with over 40 years of
combined experience
from our two
fully qualified
mechanics.*

Coromandel Garage Ltd, 226 Wharf Rd, Coromandel. 07 866 8736

Proprietors: Darius and Hilary Visser

Heart Beat – St John Ambulance Coromandel/Colville

By Julie Morris, Station Manager, Coromandel

Coromandel and the associated community are very generous.

Without the support of businesses and the people of the Coromandel area, St John and other emergency services would not be able to provide the service as we currently do.

The new owner of Admirals Arms Hotel (The Bottom Pub), Kelvin, has commenced monthly fundraising for each of our emergency services with weekly meat raffles drawn on a Thursday night.

Through this new initiative St John has received a very generous donation from the November fundraising. Kelvin has chosen four services that will benefit on a rotational basis.

Please support this awesome fundraising opportunity by popping into "The Bottom Pub" during the week and grabbing a number. Your support will be much appreciated!



Staff Profile – Pete McNae Coromandel St John Clinician of the Year 2016

Why did you join St John Ambulance service?

I joined initially to do a first aid course in 1981 to support sporting fixtures. I retired 9 years ago but since moving to Coromandel I have returned to work now as an Emergency Medical Technician volunteer.

How long have you been a member of St John?

In total now 25 years! I worked up through the ranks and became an Advanced Paramedic working full time 10 years in Auckland and another 14 years in the Waikato region.

What do you enjoy most about being an ambulance officer?

It's the satisfaction of being able to improve a patient's condition from the first encounter through the transport to arrival at hospital.

Would you recommend joining St John to others, and why?

If you have the commitment and desire to learn, and want to make a difference to someone who is in need of medical help, then come and talk to us and find out how. The comradery is great!

You too can be part of Coromandel / Colville Team: For more enquiries call the station and talk to the duty officer or leave a message (07) 866 8279 to find out more



Coromandel Walking Group

By Irene Dunn

Here's hoping there are lots of New Year resolutions out there to get outside and do more walking – what could be nicer than walking with like minded people enjoying the fresh air? You may be a visitor to Coromandel at this time of the year or a new resident – feel free to join us each Tuesday and Thursday at 8.30am outside the Lotto Dairy. We walk around the town and sometimes the beach for one hour then it's back into town for that oh so nice cup of coffee!

Don't just think about it – tie up those laces and let's get walking!

Happy walking everyone.

Contact Ruth (07) 866 7246

Coromandel Independent Living Trust

Want to get your Learner Licence?



LEARNER DRIVER LICENCE – FREE WORKSHOP

Coromandel independent Living Trust (CILT) is running a drivers workshop to help people obtain their Learner plates and take the first step towards getting a full driver's licence.

Driver's licences are important for independence and a requirement for many employers.

CILT is planning to run an afternoon workshop to help people undertake this first stage.

CILT will assist by providing guidance and help with the licencing requirements.

The workshop environment will provide support and encouragement among new drivers.

CILT is calling for interest for three 1½ hour workshops Wednesday 8th, 15th and 22nd February 3:45pm for youth (16-24 years) and 5:30pm for those 25 years and over who wish to obtain their drivers licence. The workshops are free.

Please contact CILT to register interest.

Phone 07 866 8358

Or email Carol Sutherland at volunteers@cilt.org.nz

Commemorating Waitangi Day

February

Saturday 4th

10am ☐ Colville Hall

☐ Colville ☐

Workshops Hangi Live Music

Adults \$10 ☐ Children \$5



Info ☎ tel: 866 6920
Colville Social Service Collective
communityworker@colville.org.nz
www.cssc.net.nz

NEW LISTING



Coromandel

Superb...Stunning...Spectacular...

...so many superlatives for this dream design..

- Ultra modernist home with a huge heart..
- 4 brms, 5 bthrms, spacious open plan living..
- Massive front decks, cosy patios, triple gging..
- Space age night lighting extraordinaire..
- Magnificent elevated town and sea views..

Here's a seriously fabulous home for entertaining, to enjoy with friends, big family or with great B & B potential. Room to expand the horizons even further with an optional adjacent section!

OPEN HOME: Sun 5th Feb 3 - 4pm 100 Main St

For Sale Price by Negotiation over \$700,000
www.harcourts.co.nz/CO1841

NEW LISTING



Coromandel

'See' Perch...

...nestled on the hillside and above the trees, you can see for miles from this gorgeous cottage...

- 2 bedroom ply & batten cottage on 6845sqm
- Cute 1 bedroom separate sleep-out
- Tastefully redecorated but still maintaining some quirky Coro touches
- Sun drenched open plan living
- Enjoy spectacular sunsets from your own deck

if you can see yourself at home here, then don't delay in making a time to view!

OPEN HOME: Sun 5 Feb 1 - 2pm 455 Edward St

For Sale: \$465,000
www.harcourts.co.nz/CO1844

BUSINESS



Coro Gold!!

Our longest established takeaways showing exceptional returns (\$700,000+ turnover, 55% gross margin) & instant income, she's a little Goldmine!! Now back on the market with leasehold or Freehold Options!

For Sale \$349,000+GST (Tanyl)
www.harcourts.co.nz/CO1800

LIFESTYLE



Coromandel

Outstanding water views from the potential building site on this 15.68ha bare block. Stream on the boundary and small pockets of native bush. The view is captivating and makes this block one of the best around!

For Sale \$639,000+GST (if any)
www.harcourts.co.nz/CO1813

BUSH BLOCK



Coromandel

Take a moment to relax & breath in the beautiful aromas of native bush, sunshine & a hint of sea air. Create your place.. Expansive views of the ranges, farmland, Hauraki gulf & beyond...

For Sale NOW \$275,000
www.harcourts.co.nz/CO1312

NZ's Most Trusted Real Estate Agency

2013, 2014, 2015 & 2016 (Readers Digest Annual Business Survey)



OUTSTANDING



Coromandel

A truly outstanding Coromandel property... 370sqm white brick & cedar 4 brm home on 1.1ha of private bush clad headland. Sandy beach at the bottom of the garden. Live the dream!...

For Sale PBN over \$1.2M
www.harcourts.co.nz/CO1835

NEW LISTING



Coromandel

This practical 3 bedroom house, is set at the end of a cul-de-sac and shares the 600m2 section with 3 Quail families, a pair of Pheasants, a family of Ducks + Tuis and Kereru; all encouraged to co-habit by the current owner

For Sale \$355,000
www.harcourts.co.nz/CO1837

A CORO CLASSIC



Coromandel

The classic Coromandel dream property awaits you here. This large home is perched amongst your very own 1.7ha of native bush & features 4 brms, 2 bthrms, mezzanine, solar hotwater, 2 fireplaces...

For Sale \$659,000
www.harcourts.co.nz/CO1828

WATERFRONT

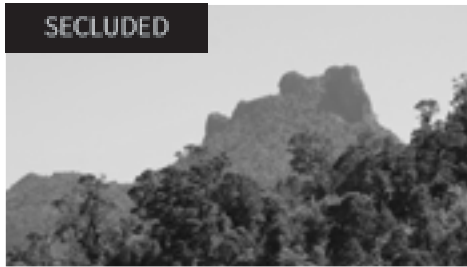


Tuateawa

Beautiful waterfront spot on the stunning Coromandel east coast. Secluded little valley of 7183m² with meandering stream, bush, birdsong and abundant Kaimoana almost on your doorstep!

For Sale PBN over \$399,000
www.harcourts.co.nz/CO1834

SECLUDED



Coromandel

If you're looking for a north facing, picturesque and private place to spread your wings, here it is! This 10.5 ha block offers terrific views down over the Kauri reserve & also way down the valley towards town.

For Sale \$289,000
www.harcourts.co.nz/CO1186

GLAMPING



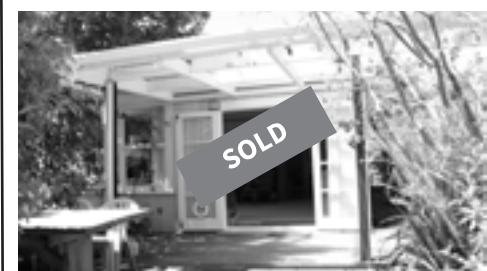
Tuateawa

If 'glamping' is your idea of the perfect way to spend your downtime, then snap this cutie up quick! Cabins, covered deck, bush bath - the works!. Nestled amongst 2854sqm of native forest.

For Sale \$329,000
www.harcourts.co.nz/CO1830

10 weeks - nearly \$10m!
Talk to us About
Getting Your Property

SOLD



Ian (Ezy) Kemp
0274 777 900



Jan Autumn
0274 788 930



Diane Arundel
021 0315613

Museum News

By Raewyn McKinney

We trust everyone is enjoying a great summer. Even on a sunny day, the museum is well worth a visit and makes a change from days spent on the beach.

In fine weather sailing is a popular activity. The Royal Akarana Yacht Club began in 1895 at Devonport. Once the clubhouse was established, it began to actively involve itself with visiting overseas yachtsmen. Each time a visiting yacht arrived in port, a flotilla of Club yachts and launches would be dispatched to meet the visitors and escort them into the harbour where they would be welcomed and made honorary members of the Club for the duration of their stay.

The goodwill this generated paid off handsomely. In 1931 the 130-foot schooner "Northern Light" arrived in Auckland. The owner was renowned concert violinist Zlatko Balokovic who later gave concerts in the Auckland Town Hall. As an appreciation of the hospitality from Akarana, Madame Balokovic offered to present a cup for a 100 mile race, part of which must be sailed in the hours of darkness. This trophy, named the Balokovic Cup was first raced for in 1932 and is still the most prestigious event on the Club calendar. The Balokovic Cup is raced overnight and on the darkest night of February, when there is no moon. The "Lady Pat" was a well-known boat that was placed several times in this race.

Here is an article from the *New Zealand Herald* of 22 February 1937:

"Balokovic Cup Race Annual Ocean Contest Success Of The Ngahau"

The annual ocean yacht, race for the Balokovic Cup, for keel yachts, which started from Judge's Bay on Friday evening,

under the control of the Akarana Yacht Club, finished at Matiatia on Saturday afternoon. The winner was the B class yacht, Ngahau, which defeated Ngatoa by 6m 45s on time allowance. The course was from the starting line in Judge's Bay, thence round Canoe Rock on starboard, thence round Channel Island light on starboard, thence round Tuhina Island (Cow), off Coromandel, on starboard, finishing at Matiatia, a distance of 94 miles. After rounding North Head on Friday night the yachts had a southerly wind in the Rangitoto Channel until reaching Tiri Tiri Island, where the wind came almost, ahead. Ngatoa continued her lead, with Ngahau in second place. In the channel Ngahau carried two spinnakers, a topsail and also water sails, and made great progress under her big spread of canvas. At Tiri Tiri the yachts had a close haul to Canoe Rock, which was passed some time after midnight. Later, the wind blew hard from the east and a big sea was running at Channel Island. Ngatoa passed the island about 6am on Saturday and the

last boat made the turn about an hour later. A light southeasterly wind was experienced after passing Channel Island and this held until the yachts reached the Cow Island off Coromandel. From there the wind was light and variable. Tawhiri and Silver Cloud blew out their mainsails off Cape Colville and Roiaata her jib. Ngatoa maintained her lead and finished well ahead of the other boats. Ngahau was replaced by Rambler.

The race started at 7.30 p.m. on Friday and the finishing times on Saturday afternoon were:

Ngatoa (scr), 3h 57m 25s;
Rambler (1h 24m), 6h 18m 32s;
Ngahau (2h 30m), 6h 20m 40s;
Tainui (2h 30m), 7h 7m 40s -
Windward, Tawhiri, Roiaata,
Silver Cloud and Iona retired.

The result on corrected times was:—Ngahau, 1; Ngatoa, 2; Tainui, 3."

Free entry on Waitangi Day, 6 February

There's more than you think in your museum. As well as artefacts and information on Coromandel's mining history, there are displays on its hospital,

school, kauri logging industry and much more... and don't forget the Jail House! So come along between 10am-4pm on **6 February** and see for yourself, 841 Rings Road, Coromandel Town.

The museum will be open daily from 1pm to 4pm throughout February



"Tainui", winner of Ocean Yacht Race from Auckland to Kawau, over a 73 mile course via inner Waiheke shore and a mark moored off Coromandel Harbour. *New Zealand Herald*, 29 March 1937

Coromandel Budget Advisory Service

By Anna Galvin

Change

Budget Advisory Services all over the country are in the process of changing over to the new Building Financial Capability model, all Budget Advisors (now to be known as Financial Mentors) will be attending training by MSD on this in February. For you, services should remain much the same: we will still be focused on helping you make informed decisions about effectively managing your money and how to deal with debt, with the use of some new tools. For us there is a lot of behind the scenes changes, funding changes and new contractual obligations. As with many other social services we are now required to share some basic client information with MSD (we are currently looking at opposing this through other avenues); these will be discussed with you when you come to see us. The Federation of Family Budgeting will be dissolved in June and while we hope they are still contracted in some capacity by MSD to support our services, their future is very uncertain at this point.

All this reminds us that no matter how well our plans are going there will always be change. Good budgeting means being prepared for the unexpected as well as the expected. And budgets can always be altered to fit new circumstances. Every day, every week, every month brings its own challenges and with foresight and planning the household economy will survive and flourish.

We're here at the Budget Office to help with that planning.

If you want to discuss this or any other problem, or wish to make an appointment, the Budget phone number is (07) 866 8351 and you can talk to John, Anna, Caro or Lynda. Our new office hours are Monday to Wednesday 11am-2pm for Budget Advice and Thursday 10am-12pm for food-parcel pick up and to make appointments.

The Budget cell phone number is 022 018 0849 – we reply to texts and messages during office hours

**Coromandel
Liquor**

OPEN 7 DAYS TILL LATE

Beer • Wine • Spirits • RTD's

GREAT
PRICES,
GREAT
SERVICE



**Lion Brown
440ml 18pk cans
\$25.00** Ends 28/2/17

**GOLD CARD
ACCEPTED**
- conditions apply

112 Wharf Road, Coromandel Town
Ph 07 866 7024 Next to Coromandel Takeaways

Poetry SPOT

Wyuna Peninsula

By Flynn Bell (*just turned 10*)

The water slowly laps
against the rock smothered shore
The water is flat
Its pale green and deep blue aura
reflects the glinting sun.
Chirping cicadas and the rev of engines
can be heard against the splashing water.
On my lefthand side
a cluster of rocks are huddled.
At the frontline of these rocks
oysters cling to their grey companions.
Now, twittering birds join in
with the orchestra of cicadas.
The sand is light brown,
pebbles and shells are scattered in and
around its borders.
Boats float peacefully on the water,
waiting to be sailed.
Tree's leaves lightly sway in the cool breeze.
My inquisitive brother is wandering on the beach

Zucchini

By Deborah Hide-Bayne

If you have too many zucchini at the moment, this is a great way to use them up. It is also a good way to sneak extra vegetables into your diet!

Zucchini Cake

350g plain flour
4 tsp baking powder
75g cocoa powder
1½ tsp mixed spice
1 tsp salt
175ml neutral flavoured oil
250g caster sugar
3 eggs
2 tsp vanilla extract
500ml grated zucchini
(press it gently into a measuring jug; it's about 1½



zucchini; if using 1 extra large one, peel it and take out the middle with all the seeds)

140g toasted nuts, roughly chopped

Heat the oven to 180°C. Sift the flour, baking powder, cocoa powder, mixed spice and salt into a bowl. In another bowl, whisk the oil, sugar, eggs, vanilla essence and grated zucchini. Mix the dry and wet mixtures together until just combined, fold in the toasted nuts. Line a 24cm cake tin with greaseproof paper, pour in your cake mixture. Bake for about 45 mins, or until a skewer poked into the middle comes out clean. Cool in the tin for 10 minutes or so, then turn out onto a wire rack and leave to cool.

This would be lovely served with a chocolate ganache or chocolate butter cream icing.

Monday Walkers

By Irene Dunn

Our last walk together seems a long time ago so we are looking forward to our first walk of this year on **13 February**.

We walk each Monday and until winter will meet at 8.30am at Woollams Street car park to car pool for our walk. We have many interesting walks all around the Coromandel area and some further afield – usually aim to be home by 1pm, though some walks are a little longer.

We welcome new walkers. If you would like more info please contact the number below. Happy walking everyone.

Irene 021 109 7925

\$15 PIZZAS



DINE-IN & TAKEAWAY



EVERY MONDAY—WEDNESDAY 3PM—8PM



STAR & GARTER
HOTEL

CONDITIONS APPLY

Mana Update

By Penelope Carroll

"Life is a voyage of discovery and an extraordinary opportunity to awaken."

– Shanti Huebner, in *Finding the Luminous Field*.

Mana Retreat Centre was established for the exploration and awakening of consciousness and the realisation of our essential unity. For almost 30 years thousands of people have made their way here on personal 'voyages of discovery', finding support and inspiration in the nourishing space and tranquility of Mana. Throughout this time we four Centre trustees and kaitiaki of the land – Rainer, Shanti, Sol and Penelope – have been on our own voyages of discovery, held and blessed by spiritual community and the beauty which is Mana. Now Shanti has written a book sharing her transformational journey, encompassing the years before she co-founded Mana and her many years living here.

Finding the Luminous Field blends centuries of spiritual wisdom and 45 years of personal awakenings, encouraging us to "let our light shine, to be our own unique self, to celebrate and give thanks for this precious gift of life, to awaken to our true nature, and to offer our gifts to the world".

Shanti acknowledges and celebrates many different paths to awakening. Her original teacher was Swami Shyam. In her 20s she lived in the mountains of India as one of his students, and still returns at intervals for renewal. She feels a special affinity with the goddesses of antiquity; the teachings of the Sufi tradition; and many of her practices have their roots in Zen Buddhism. Music and dance are also "paths to the light" for her.

"I wanted to put down in writing some of the teachings/learnings that have been beneficial in my life – that have touched me and propelled me on my journey towards conscious living. Putting these in book form allows them to go out in many directions around the planet."

Finding the Luminous Field, published by Amazon just before Christmas, has already ended up in Canada, the US, the UK, India, Australia, Germany and Japan, as well as found its way around New Zealand.

The book is, she says, an intentional tool to potentially inspire readers, and includes practices "to give people the opportunity to touch into this luminous space."

You can order a colour, black and white or kindle version from Amazon.com now (click on 'books' and type in the book title). You will also be able to buy a copy at Mana by the end of the month.

**Airini Tukerangi – A Legacy Left**

By Mike Noonan, Executive Trustee, CILT

At CILT our year got off to a very sad start with the news that the chairperson of our trust Airini Tukerangi had passed away on the 4 January. It was huge personal loss for me and for the other Trustees as she had been our chairperson for fifteen years. During that time we had got to know her well and we all enjoyed her dry sense of humour and her pragmatic and highly professional approach to her work. For the Trust her loss is immeasurable.

I first met Airini at the old Coromandel hospital in 1997. She was visiting with her parents Kahu and Sam. CILT was in its early stages as a Trust and I felt Airini's background in health and education and her dedication to bettering the lives of people in Coromandel would make her a valuable trustee. I was delighted when she joined the Trust in 1998 and took on the role of chairperson.

Airini possessed a unique ability to see the big picture, to not let small setbacks deter us from our goals. She had an innate sense of how to lay the good foundations needed for projects to prosper. Having been born in Coromandel she understood the challenges of living in a remote rural community. She was deeply committed to Te Reo and Tikanga Maori, and she extended this dedication to providing opportunities for all people in Coromandel. She understood what made a small community tick and believed in strong whanau as the basis for strong communities. Professionally she had developed broad networks in education and health throughout Hauraki and also nationally. Quite simply Airini wanted the best for people. She wanted to see people well housed with good educational opportunities and with access to good health and to pathways for employment.

For me, Airini was always a reassuring presence. I could rely on her sound advice based as it was on common sense, experience and an intuitive ability to cut to the chase. She engendered very positive working relations with both me and CILT's other trustees, Margaret, Andy and Vicky. She has left us a legacy to guide us. We will miss her greatly. Our deepest condolences go to her whanau at this very sad time.

E Te rangatira Airini, te whakaruruhau o nga kaitiaki, te poutokomanawa o te whare, te kaihautu o te waka.

E te hoa, moe mai ra i roto i to moengaroa.



Mana

Mana Retreat Centre, Coromandel New Zealand

Full schedule on our website manaretreat.com

retreats
workshops
events

3-6 Feb PureBioenergy Retreat w/ *Zoran Hochstatter*

10-19 Feb Open Floor Teacher Training Module 2
w/ *Open Floor Team*

23-26 Feb Reiki Retreat w/ *Uli Brell*

4-5 Mar A Place for Healing: an autumn sweat lodge
w/ *Sol Petersen*

Selected dates in Jan & Feb Tuesday Open Floor Classes, 9.30-11.30am
w/ *Geordie Jahner, Ph.D & Teachers in Training*

Spaces available Contact be@manaretreat.com or 07 866 8972



SCOTT REVELL

BUILDING CONTRACTOR



- New Homes
- Renovations
- Additions \ Repairs
- Bathrooms
- Decks \ Fences \ Landscaping

Prompt Professional Service

srevell2010@hotmail.co.nz

027 861 6592

COROMANDEL

Llandem Consulting Engineers

Derek Stewart

C.P.Eng MIPENZ

- Structural
- Civil
- Geotechnical

Ph/Fax: (07) 866 6704

Cell: 027 442 4234

7c Torehina Hts, Waitete Bay



Arts

Canvas & Crimp II Exhibition Hauraki House, Coromandel 6-11 February

By Raewyn Penrose

The Canvas & Crimp Exhibition was first held in 2016 as a collaborative event between two artists working in quite different media.

This year's exhibition features Coromandel resident artists, Jan Panther and Raewyn Penrose.

Jan is a largely self-taught artist with a love of landscapes and seascapes, and produces some truly iconic and vibrant Coromandel oil paintings. She has exhibited her art with considerable success over the last 10 years.

Raewyn is a fibre artist, producing a wide range of one-off garments, accessories, furnishings and art in finest natural fibres such as merino wool and silks. She has travelled extensively exhibiting, tutoring and judging in her chosen media.

The Canvas & Crimp II Exhibition will officially open at 5pm on **6 February** at Hauraki House. Refreshments will be served and Jan and Raewyn extend a warm invitation for all to attend.

The exhibition will be open 10am to 4pm daily, Tuesday to Saturday.

For further details contact Raewyn on (07) 866 8880

Coromandel Art Group

By Lindsay Grant

Well happy new year and we hope the colours are shining brightly on you this season.

Our annual Art Exhibition is on and I hope you have had a chance to go and see it. It is where we show you all what we have been doing for the last year. All new works on display, most are for sale for you to take home and enjoy long after the holiday has finished! If you haven't already been, pop down to Hauraki House right there at top of town by the park and have a look. It's free to come in and browse. With over 90 paintings on display, there will be something for everyone. We also have a raffle we would love for you to support as this is our only fundraiser for our small club of 18. We will post within NZ if you are our lucky winner.

Hauraki House is open daily from 10am-4pm until **5 February** which will be our last day, so don't leave it until the last minute! We will be packing it all up that day just before 4pm so come in earlier please. Every year we seem to have so many people rocking up right on four only to see us in a rush packing it all down and it's a shame to think they missed out.

After the exhibition and once we meet again as a group, we will start to paint in our great surroundings for as long as the weather is kind to us. Come and meet us if you see us in your area.

Enjoy the summer colours. We get amazing sunsets here in Coro at this time of year.



Our "Tianna" santa doing a great job

Mercury Bay Art Escape

2017 is the 10th year for Mercury Bay Art Escape Open Studios and the Trust wants to celebrate!

The Mercury Bay Art Escape annual Artists Open Studios is an iconic event on the Coromandel Peninsula calendar and well worth a visit.

Held on the first two weekends of March each year (**4-5 and 11-12 March**) it is an opportunity to meet the artists in their creative space, soak up the coastal scenery and enjoy the many cafes, galleries, breweries and wineries in the area. The line-up of 42 artists, including six new artists and two art groups, features a diverse range of media including drawing, fine woodwork, harakeke weaving, hand forged knives, jewellery, lamp worked glasswork, mixed media, mosaics, painting, photography, pottery and prints. Another new initiative during the Open Studios, and in the spirit of the recently adopted Arts Strategy by TCDC, the Trust will be opening a Pop Up Guest and Emerging Artists Gallery in the Ray White Auction Rooms, Whitianga. Invited artists from other areas of the Coromandel Peninsula will be exhibiting and selected emerging artists from Mercury Bay will have a first exhibition of their works.

To celebrate the 10th Anniversary of Mercury Bay Art Escape Artists Open Studios the Trust has produced a new art guide and website.

The new format free art guide features member details, an image of their artistic style and easy to follow maps. It also includes local galleries, accommodation, cafes, wineries and brewery options in the area.

Collect your free copy from i-sites, galleries and cafes around the Coromandel Peninsula. In Coromandel town it is available at The Source and at the i-site. Postal options are also available on the new website.

The new website was designed by Lisa Brauns of Dreamland Design in Whitianga. With an excellent understanding of Art Escape and having designed the guide for many years, Lisa has created a slick, user friendly website with a more modern look and easy navigation. It is fully mobile friendly (responsive), so therefore much easier to use from tablets and smartphones. New functionality includes artists sorted by media, a downloadable, printable version and Google "My map" so visitors can easily navigate to the studios of their choice.

The Gala Opening of the Showcase Exhibition will be held on **Friday 3 March** at 7.30pm at Hot Waves Café, Hot Water Beach. This is a chance to meet and mingle with the artists while enjoying bubbles and dessert nibbles. To celebrate the 10th Anniversary the Trust has challenged member artists to interpret the theme 'Growth' in their chosen media. The exhibition continues until Easter Monday. Tickets are available on the website.

www.mercurybayartescape.com,
www.facebook.com/mercurybayartescape/

Good fishing on Mussel Farms

The industry requests that all boaties taking advantage of better fishing inside Coromandel Mussel farms, please:

- Tie up to the farm and never anchor
- Do not run over any farm structures or ropes
- Do not tie up to and move off any line being worked by a farm vessel
- Always discharge any sewage more than 500m away from the farm



Arts continued

Coromandel Music Society – Fiona Pears

By Robin Münch

Hugely popular violinist, Fiona Pears, is returning to Coromandel to delight fans with her exuberant, electrifying musicianship.

An amazingly talented violinist, Fiona could have had a brilliant classical career. Instead she chose the freedom of composing and playing according to her own rules, calling on tango, gypsy, Celtic and classical styles sometimes in the same piece of music!

Fiona has performed and recorded with artists such as Dave Dobbyn, Hayley Westenra and Bic Runga as well as opening for Tony Bennett, Ottmar Liebert and the Crown Prince of Denmark, the late Victor Borge. Personal highlights include appearing at Ronnie Scott's world famous jazz club in London and performing her own compositions and arrangements with the Royal Liverpool Philharmonic.

On this tour, Fiona will be accompanied by her husband, pianist Ian Tilley (former music director for Hayley Westenra and current music director for Aled Jones), Pete Fleming on bass and Burke Goff on guitar.

Fiona has been a spokesperson for the World Society for the Protection of Animals and appeared in "Bear Sanctuary", a film about her life as a concert violinist and her 2009 visit to a Romanian bear sanctuary on the outskirts of Brasov.

More recently Fiona has appeared at the Manouche Jazz Festival in Australia, been a guest artist on the Queen Mary and Queen Elizabeth liners and a soloist with several symphony orchestras around New Zealand.

Who could forget the outstanding performance and contagious joy that Fiona shared with us almost three years ago? Get your ticket soon and be one of the lucky ones to experience her again.

Date: **Friday 17 February** at 7.30pm.

Venue: The Club, Woollams Ave, Coromandel.

Tickets: \$25, concession \$20 Coromandel Information Centre ph (07) 866 8598 and Eventfinda. Door sales from 6.30pm.



When it takes 100 verbs to make a conversation...

By John Eaglen



Making Conversation, Hauraki House Gallery, 4-12 March
WTS Coromandel started its 2016 programme with Secrets, Gifts and Memories: Spheres of Connection. Paired with the Players' sell-out production of Bothered and Bewildered, the new works created were at once thought-provoking, memorable and hauntingly beautiful.

This year we bring you Making Conversation.

Mark your diary, invite your friends to the "Bubbly Brunch" festive opening of Making Conversation – the first WTS Coromandel exhibition of 2017. 11am **Saturday 4 March**.

100 verbs? Well, artists are generally much more concerned with doing and making than with talking about it. So we started by inviting our artists to consider 100 "doing and making" verbs that are variously connected with the process of creating an artwork, and with the ways in which artist and material interact during the process – which is most often very much a conversation in itself.

Each artist has drawn three verbs from the hundred. But they are not restricted in the ways in which they choose to respond to either the verbs, or to "Making Conversation" – the exhibition theme and title.

As we approach the deadline for this issue details are being finalised. You will see familiar faces, and some new ones. Perhaps some familiar styles and techniques. Almost certainly some surprises. Again, so appropriately... Watch This Space!

Pastel Artists Coromandel

By Christine Lunn

After what seems like a very short holiday break Pastel Artists Coromandel will hold their first meeting for 2017 on January 31st at the Coromandel Aero Club Rooms.

2017 is going to be a big year for the group with several members attending the PANZ (Pastels Artists of New Zealand) Annual Convention and associated workshop in Morrinsville and Te Aroha during March.

Several members of the group are planning to enter one of their works in the exhibition.

We are also working on our workshop where we will invite a leading pastel artist to visit Coromandel and lead us in a full day project.

We look forward to welcoming any interested local or visiting artists (or beginners) to our club days. Morning tea and bikkies at 10.00am.

Pastel Artists of Coromandel meet Tuesday mornings 9-00am to 2-00pm at the Coromandel Aero Club rooms on Tiki Road.

Initial contact with Allan Beaver (07) 866 8053 or Christine Lunn on (07) 866 7220

Shared Studio with WTS Coromandel

By Sally Tennent-Brown

Well... we weathered a Coro winter in Hauraki House and had a great time... with one or two surprising spin-offs; the beautiful pohutukawa-clad banners we now have through town were first conceived one particularly blustery late afternoon during an artists' get-together. People were seen running round with bamboo poles, testing creative concepts and potential new, low-tech inventions! With much glee and persistence... and an unforeseen and happy outcome!

What's more, our much-loved Community Gardens now have scarecrow guardians in place... edges of things are important – they invariably overlap in places.

So... this year we have this gorgeous space to nurture, from March through to October. What possibility! What promise! And what fun!

The Shared Studio opportunity begins straight after our "Making Conversation" exhibition next month. We welcome

two or more people from any of the artistic disciplines to team up and bring your gear into town, to set up and work collaboratively or alongside each other. Whether you work in the visual arts, applied arts, music, dance, theatre or writing, there is space for you here... to experiment, unwind, play, plan and develop.

If this is touching a chord in you, however tiny, please email us on info@wtscoromandel. We'd love to talk with you.

We'll also be offering workshops and visits... watch this space :)

WTS Coromandel is an informal not-for-profit established in May 2016 for the benefit of Coromandel artists. It organises a range of "for artists by artists" activities through the quieter months from March to October, including regular Artist Happy Hours and a programme of Shared Studios. WTS Coromandel is pleased to acknowledge support received from TCDC Creative Communities



The
Lighthouse
Studio

*Custom Woodworking,
Persian Rugs, Local Art*

75 Wharf Road,

across from the Four Square, down the Green Lane.

Open 10-4 Tue thru Sat (unless we've "Gone Fishing")

Call: 021-038-0923 for a Rendezvous.

www.lighthouse-studio.co.nz

Rangatahi

CELEBRATING OUR CHILDREN

Coromandel Youth Group – Hauraki House

For all children aged 5 – 15yrs.

Term One Opening Hours

After school Tuesday and Thursday 3-5pm, Friday 2.15-4pm, Sunday 1-4pm. (If you would like us to collect your child for the Friday after school session, please phone the Youth Rooms before 5pm Thursday).

Friday Night Social 6-9pm (for 11-14yrs), all students must let Youth Group staff know that they are attending upon arrival!

To help with running costs we would appreciate a gold coin donation for after school sessions.

For more information call in at the Youth Rooms, Hauraki House or phone (07) 866 7061.

We would like to thank those who make this programme possible: Lotteries Waikato, COGS, Trust Waikato, The Bizarre Trust and Coromandel Community Board

The Incredible Years

The Incredible Years is a Parent Programme (for parents of 3-8 year olds).

Starts at Ambulance Rooms, Tiki Road, Coromandel. Weekly from **Tuesday 21 March** 9.30am-12pm.

To register interest, or for further information contact CILT office Tiki House or Sally Steven 027 800 9347 or Kate Donoghue 027 692 6494.

"I have learnt so much from this course ... it will definitely help in the bringing up and growth of my children ... thoroughly enjoyed it." – Parent, July 2012.

Provided by:



Kiwi Can

"Kia Ora Tatou Katoa"

At the time this article was due we are just about heading off to our Kiwi Can National Training, so not much to report. I would however like to inform you all of our Kiwi Can Canners for term 4 2016, they were:

Coromandel Area School: Room 1 – Issac, Room 2 – Sage, Room 3 – Ayla, Room 4 – Theo, Room 5 – Katie, Room 7 & 8 – Kylie.

Colville School: Juniors – Timothy, Seniors – Isla.

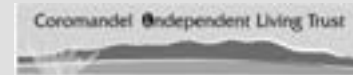
Thames South School: Room 9 & 11 – Olivia, Room 7 – Awatea, Room 8 – Kairah, Room 5 – Waimaarie, Room 2 – Demetry.

See you in Term 1 2017.

Nga mihi nui from the Kiwi Can team Marlene, Gemma, Jasmine, Emma, and Natalie.

Want to help out Kiwi Can Coromandel? Contact Marlene Johnson 027 223 2629, email: kiwican@cilt.org.nz

The Coromandel Kiwi Can programme is managed by the Coromandel Independent Living Trust, officially sponsored by Sanford Ltd and supported by The Lion Foundation, Thames Community Board and Driving Creek Railway Ltd, CSSC (Colville Social Service Collective), DV Bryant Trust



COROMANDEL & AUCKLAND FERRY

TIMETABLE EFFECTIVE TO 23 APRIL 2017

Departs Auckland: Pier 4, Quay Street

| | M | T | W | T | F | S | S |
|-----------------|---------|---------|---------|---------|---------|---------|---------|
| 9 Jan - 5 Feb | 8.45 am | 8.45 am | 8.45 am | 8.45 am | 6.40 pm | 8.45 am | 8.45 am |
| 6 Feb - 12 Feb | 8.45 am | 8.45 am | - | 8.45 am | 6.40 pm | 8.45 am | 8.45 am |
| 13 Feb - 9 Apr | - | 8.45 am | - | 8.45 am | 6.40 pm | 8.45 am | 8.45 am |
| 10 Apr - 16 Apr | - | 8.45 am | - | 8.45 am | 8.45 am | 8.45 am | 8.45 am |
| 17 Apr - 23 Apr | 8.45 am | 8.45 am | - | 8.45 am | 6.40 pm | 8.45 am | 8.45 am |

Departs Orapiu to Coromandel: (approximate times)

| | M | T | W | T | F | S | S |
|-----------------|---------|---------|---------|---------|---------|---------|---------|
| 9 Jan - 5 Feb | 9.50 am | 9.50 am | 9.50 am | 9.50 am | 7.45 pm | 9.50 am | 9.50 am |
| 6 Feb - 12 Feb | 9.50 am | 9.50 am | - | 9.50 am | 7.45 pm | 9.50 am | 9.50 am |
| 13 Feb - 9 Apr | - | 9.50 am | - | 9.50 am | 7.45 pm | 9.50 am | 9.50 am |
| 10 Apr - 16 Apr | - | 9.50 am | - | 9.50 am | 9.50 am | 9.50 am | 9.50 am |
| 17 Apr - 23 Apr | 9.50 am | 9.50 am | - | 9.50 am | 7.45 pm | 9.50 am | 9.50 am |

Departs Coromandel: Hannafords Wharf

| | M | T | W | T | F | S | S |
|-----------------|---------|---------|---------|---------|---------|---------|---------|
| 9 Jan - 29 Jan | 3.00 pm | 3.00 pm | 3.00 pm | 3.00 pm | 8.45 pm | 4.30 pm | 4.30 pm |
| 30 Jan - 5 Feb | 4.30 pm | 3.00 pm | 3.00 pm | 3.00 pm | 8.45 pm | 4.30 pm | 4.30 pm |
| 6 Feb - 12 Feb | 4.30 pm | 3.00 pm | - | 3.00 pm | 8.45 pm | 4.30 pm | 4.30 pm |
| 13 Feb - 9 Apr | - | 3.00 pm | - | 3.00 pm | 8.45 pm | 4.30 pm | 4.30 pm |
| 10 Apr - 16 Apr | - | 3.00 pm | - | 3.00 pm | 4.30 pm | 4.30 pm | 4.30 pm |
| 17 Apr - 23 Apr | 4.30 pm | 3.00 pm | - | 3.00 pm | 8.45 pm | 4.30 pm | 4.30 pm |

09 307 8005 360discovery.co.nz



Auckland - Coromandel

| | ADULT | CHILD | FAMILY |
|-------------|---------|---------|----------|
| ONE WAY | \$55.00 | \$35.00 | \$145.00 |
| OPEN RETURN | \$90.00 | \$55.00 | \$235.00 |

Waiheke Island (Orapiu) - Coromandel

| | ADULT | CHILD | FAMILY |
|-------------|---------|---------|----------|
| ONE WAY | \$35.00 | \$22.00 | \$92.00 |
| OPEN RETURN | \$60.00 | \$35.00 | \$155.00 |

Child definition is 5-15 years inclusive.
Family definition is 2 adults + 2 children.

Please note:

A Sunday service operates on public holidays, except Christmas day.

In the event of cancellations 360 Discovery may arrange alternative transport arrangements.

A ferry bus shuttle will transfer you to and from Coromandel Town (Samuel James Reserve car park) and Hannaford's Wharf. There is no additional fare for this service.

Timetables and fares are correct at time of printing. 360 Discovery reserves the right to change fares and departures without notice. Full terms and conditions of travel are available online.

360 DISCOVERY[®]
CRUISES

Environmental

Interview with Dave Hansford, author of "Protecting Paradise".



By Thomas Everth

In the last Chronicle the book *Protecting Paradise, 1080 and fight to save New Zealand's wildlife* by Dave Hansford was referenced. I asked the author for the opportunity of an interview for the paper

via email and am delighted that he accepted:

Question: What was the motivation for writing your book?

For years, it's bothered me that so much nonsense gets talked about 1080, and that no matter how many times that nonsense gets debunked, certain elements – notably the hunting lobby – just keep on repeating it. I felt that people who had an open mind on 1080 might be struggling to sort the propaganda from the facts. So the book was written for those people...

Question: What in your experience engages the greater public in a positive fashion in biodiversity protection?

Nothing succeeds like success. Wellingtonians have seen what happens when we give the birds a break by getting the pests off their backs – Tieke are nesting in Te Aro; Kaka are landing on people's verandas; they wake to a chorus of Tui. When people go tramping, and see Whio on a stream, with ducklings that would otherwise have been scoffed by stoats, or hear kiwi – as they can around Whenuakite now – that wouldn't be alive if we'd let the 1080 opponents have their way, that's the most powerful endorsement of all.

Question: Sadly, populist movements have been on the rise who reject the advice of experts and science in favour of conspiracy theories. What are the risks from this for the future of conservation in New Zealand?

This is a serious concern, and not just for conservation. We've left future generations some huge and daunting environmental problems to solve, and their response will need to be informed by the best available science. Yet, just as the need for clear-minded, critical thinking is greatest, we see more and more people subscribing to

superstition and bunkum instead. Too many people nowadays reject science without taking the time to understand it. They don't look any further than Facebook.

We lost decades of precious time arguing with the oil company shills about whether climate change was real or not – decades we should've spent cutting emissions and coming down hard on polluters. But that opportunity was wasted: the horse has bolted, and our children and grandchildren will pay the price for our foolhardiness.

We mustn't let the same thing happen to our wildlife – we must keep our minds on the task of rescuing our withering biodiversity – not just with 1080, but with every means possible – and not be distracted by self-interested lobbyists.

Question: Are you hopeful that you are able to shift individuals' attitudes towards the importance of protection and the acceptance of any/all tools in its execution with your book?

I'm happy to say that's already happening. I've had letters from all over New Zealand – and from Australia – from people who didn't know what or who to believe about 1080, but are now sufficiently reassured to get behind conservation efforts. But I never set out to convince people myself: I wanted to inspire them to start thinking critically for themselves about these things, and to arrive at their own position on the strength of evidence, not Facebook memes. That's why I included 30 pages of references.

Question: Some people still maintain that our food and water would be contaminated by 1080 operations and some point to watercress or even blackberries. What is your response to such claims?

People who keep



making these claims should put up, or shut up. Research has demonstrated repeatedly that 1080 cannot persist in living tissue for more than four or five days. That same research has shown that 1080 is only minimally "taken up" by plants like Puha and Watercress for a very short time (days), and Puha actually also manufacture it themselves. Not that it matters –

you'd have to eat several tons of those plants in a single sitting to put yourself at risk!

As for water: more than 3,000 tests have been done on waterways after 1080 drops over the last 25 years. Exactly four from public water supplies had traces of 1080 in them, and they were all just a fraction of the Ministry of Health permissible levels. It's no longer good enough for these activists to keep on repeating the same baseless allegations over and over – if they have credible, peer-reviewed, published science to back their claims, then it's high time they produced it.

Thank you, Dave, for your time, much appreciated, and I wish you success for your work and your book.

You can read all about Dave and his work or order his book at his website: www.protectingparadise.co.nz

Upper Coromandel Branch of Forest and Bird

By Rex Croucher

Greetings from Forest and Bird. Holiday time is over and 2017 is here. What we had to say in the January issue of the Coromandel Town Chronicle is no longer "next year" or "after the holidays", it is now.

We hope you feel rested after a well deserved holiday and could now consider helping us with the conservation ideals we suspect are lurking just below the surface of your thinking. A chat with Sue Wright on (07) 866 8039 might clarify where you could fit in. We would welcome your call.

This Forest and Bird Branch has a number of "Good Nature" self loading traps for use on private property. A call to Sue Wright (above) could see one in operation on your property.

Perhaps you could "ferret" out your January copy of the Coromandel Town Chronicle and see what we had to say on page 31.

Best wishes for 2017 from Forest and Bird.

MASSAGE THERAPY COROMANDEL



- ★ Deep Tissue Remedial Bodywork
- ★ Relaxation / Swedish massage
- ★ Lymphatic Drainage
- ★ Hot Stones Massage

Lynley Ogilvie, RMT.

Call for an appointment: (07) 8668684 or 021 866868

COROMANDEL PLUMBING

(1986) LTD

PO Box 23, 1740 Tiki Road, Coromandel

CRAIG DUDSON

Phone/Fax 866 8814

A/Hrs 866 8837



Plumbing, Drainlaying and Gasfitting

Aerial 1080 Comes to the Coromandel in 1994

Chronicled by John Veysey

Part 2 – following on from last issue

We lay awake at night trying to think of some way to get through to the officials who were controlling this 1080 operation. The area did not need anything aerial, it was easy to drive to and walk through. We were shocked by the arrogance of the DOC staff, their high-handed treatment of country folk and the ease with which they could make promises and so quickly and publicly break them.

Without any further warning, on the windiest day we had experienced for years DOC dropped its 1080. On the day of the drop a DOC staff member told one of the locals that the drop had been a disaster. Vicious squalls had hit the helicopter from all directions. The bucket operator had become so airsick he could no longer do his job. The pilot was left fighting to keep his craft in the air with one hand while trying to operate the spreader with the other.

After the helicopter had finished and the workers had departed, I entered the poisoned area and walked up the main stream. Bright green baits were easy to pick out lying on rocks and along the stream banks but I could not see any green baits in the stream water. We had been publicly promised: "No 1080 would be fed directly into waterways of any kind." Such a promise gave hope to those who took their water from the Waiau River. It took my eyes some time to adjust to the pellet shaped baits that were lying in the water. They had lost their green dye. These once green baits were now the colour of grain, almost white. They were in clumps. A clump here and another further upstream and the odd one or two baits in between. The poison had already washed out of the baits and been swept downstream just an hour or two after they had landed in the water. So here was another lie. The baits had landed in big numbers

directly in the waterways. I tackled one of the DOC staff but was told "They're not waterways! It's gotta be 4 meters wide and 1 meter deep before it can be considered a "waterway". I had a lot to learn.

The following day, accompanied by three neighbours, I walked into the area at first light. I walked along the top ridge. Bright green baits lay at my feet. A finch was pecking at bait and flew off as I approached. We divided up the area and each covered our own area looking for baits. Coming down off the centre ridge I noticed a pattern in the slope. A dying possum had been arching its back and curling up in its dying spasms as it slid down the slope. I looked for the dead possum at the base of the pattern but could not find it. When I looked up a large boar, white froth spilling from his mouth, was stumbling blindly towards me. He had presumably eaten the possum. I was in no danger but was moved by the pig's low agonising moans. There was a look of disbelief in his eye.

The four of us, Jim and Stuart Edmondson, John Fowler and myself, crisscrossed the operation for five consecutive days looking for baits. After a week we sat down with a map to pool our knowledge. It soon became obvious that barely half the intended area had received sufficient baits to kill any possums. Much of the area was clear of baits. We did not find any dead possums.

After we had finished this monitoring I became very ill suffering heart palpitations, visual disturbances, hot and cold flushes, vomiting and severe headaches continuously for 10 days. All kinds of possibilities flooded through my mind but eventually I came right, weakened but alive. In hindsight I believe this frightening sickness was probably caused by stress.

To be continued next issue...

These excerpts come from Reihana Robinson's book "Rural Revolt". A copy of this book will be in our local library by now



- We buy and sell
- Antiques & collectibles
- New and used
- Arts & crafts
- New handbags
- & new togs (larger sizes)
- Paint-your-own ceramics
- Eclectic and Interesting*
- *pop in for a look*

Ph Viv Cory-Wright 0274 577 632

Licensed Secondhand dealers

75 Kapanga Road, Coromandel Town

Email: corotime2016@gmail.com



We could pay up to 35% of the cost of fencing your waterways, wetlands, coastal or bush remnants and erosion prone land.

To find out how, talk to Elaine Iddon or Rob Corkill in our Whitianga office. They can assist with your environmental projects and also provide free technical advice on any of the above issues.

0800 800 401

waikatoregion.govt.nz



Environmental continued

Moehau Environment Group

By Natalie Collicott

Kiwi Death Shocks Community

It was heart breaking to discover that a wild kiwi had been mauled to death by a dog near Waitete Bay during January. The bird was discovered near Woods Rd on Monday 2 January by Colville local Nicole MacAuley.

The bird was of breeding age and was found in a known kiwi "hot spot" within our 8000ha Kiwi Sanctuary. The kiwi suffered horrific injuries, with a broken bill and large hematoma on its neck. It had obviously had a traumatic death. It is sickening to think that a dog has been allowed to roam into an area where kiwi are being protected. Quite possibly the dog's

owner has no idea what their dog has been up to. We are devastated, given how much effort goes into protecting these birds. What's worse, is that with rogue dogs on the loose, this could be happening more often than we realise.

This tragedy sends a strong message to all dog-owners. Please take responsibility for keeping dogs away from kiwi as dogs of any size can attack and kill a kiwi. A kiwi's smell is irresistible to dogs and it only takes a few seconds for the dog to grab and kill a kiwi. Dog owners can help protect kiwi by making sure dogs are tied up at night, and in sight or tied up during the day. If you're in the bush, keep your dog on a lead at all times.

Free kiwi avoidance training for dogs is offered around the Coromandel year round by

DOC. Three training sessions in January were run in partnership with local kiwi protection groups, and have been well attended.

Avoidance training is a simple tool to help reduce the risk dogs pose to kiwi by teaching dogs they are something to stay away from. Contact DOC on (07) 867 9080 for details.

Summer Programme

We've had a busy January with our volunteers out and about running Summer Programme activities; fossicking in rock pools; tracking kiwi with

sniffer dogs; eyeballing gecko; demolishing wild ginger infestations; and exploring the forest after dark. Thanks to everyone that has come along and supported us. It is great to see so many families coming back, year after year, to take part in the events. To find out what events we have coming up, check out www.meg.org.nz

Moehau Environment Group is a community conservation group dedicated to protecting biodiversity on the Coromandel. We are always keen to hear from volunteers wishing to help protect kiwi and other precious wildlife in their backyard. To get involved email natalie@meg.org.nz

Bush Bites

You've heard of sound bites. Bush bites are snippets from our volunteers time spent in the wilderness.

"I run, I fall.
I walk fast, I stumble.
I walk slowly, I breathe, I hear the birds."

"Looked up to see what the noisy silver-eyes were talking about, and we spied Mama morepork with two gangly chicks, taking a dose in the tree above. Magic!"



Natalie holding the dead kiwi

Looking after the water

By Catherine Delahunty, Green MP

Summer at last! The Hauraki/ Coromandel is full of people enjoying a break from the city. I have never seen Coromandel town so busy. Every person brings money in and also puts stress on our infrastructure. People come here for the wild beauty that is missing from their daily lives, a wild beauty that has to be valued for more than tourism, but for the relationship we who live here need to have with the water, the ocean and the whenua as the sources of life.

I went to Little Bay and with the fortunate who get holidays and swam in that fine ocean. Apart from the numerous tiny jellyfish which I had not seen on that coast before it was perfect. If you want to swim on the west coast of the Peninsula you need to travel at least 10kms out of Thames to where the sediment and other pollution from the Hauraki Plains rivers has dissipated. It is a quiet crisis that the Waihou and Piako rivers continue to contaminate the Gulf and the run off from the Auckland mega city contributes via the Waitemata. The once abundant and pristine inner waters of Hauraki are now brown and dirty with seasonal risks from toxic algae which can kill dogs. The increasing impact of global warming adds to the threat. Many people are working on the health of Tikapa Moana but a lot of energy is being spent on remediation without challenging the core threats from intensive dairying on the plains. We need to face the serious situation by demanding that national and regional rules stop water pollution, be it via dairying, sewage or urban run off. In my swimmable rivers tour I have seen some truly heroic efforts in lower catchments which are undermined by the industrial scale dairy conversions in the upper catchments. The loss of safe clean water is an indictment of our carelessness and greed and it's about more than fencing and planting waterways. Our models of land use have to change.

This is the year for change. We have an election which will be about fresh water, fish habitat and climate change as well as poverty, inequality and the housing crisis. But more than these issues it will be about the unease many people feel as the 1% get richer and others are left behind in a Victorian dystopia of dirty water and entrenched unfairness. We, the citizens, must lift our heads up and vote for change as one of the positive actions we can all take. I am not standing for the Greens next election but I am always going to be active in the issues and the campaigns, especially here, for a fairer world which looks after the land and water. It's never been more important. I look forward to supporting the next Green candidates for Waikato Hauraki and Coromandel and being more often at home to help protect this place and swim in the freshwater worth fighting for.

**Papa Aroha
Engineering**
LIMITED

**Now servicing all makes & models of
Lawnmowers,
Ride-on Mowers,
Chainsaws and Sharpening,
Gen Sets,
all Small Engines,
Boat Tractors
and Quad bikes**

Light Engineering & Machining

MIKE McCALL • 07 866 8469 • 027 223 7919

**1060 Colville Road, Coromandel
Email: mikepapeng@gmail.com**

Sport

Coromandel Recreational Fishing Club

By Allison Brown and Committee CRFC

Hi to all,

As the edition for January was missed hope you all had a very Merry Xmas and a Happy New Year. Here's hoping that this year won't seem to go as fast as the last one!

Our Xmas dinner and prize giving went off very well and a pleasant evening was had – a big thank you to the staff and management of the Admirals Arms for the lovely dinner we had out in the garden bar (the weather was nice and fine).

By the time this edition comes out our Anniversary Weekend Competition will be gone so will post the results in the March edition.

The next Tournament is our main event of the Year "The Classy Chicks" to be held on the **25 February** Non Club Members are most welcome to join.

Entry forms will be available from Wyuna Studios or Fish and Dive or email: coromandelfishingclub@gmail.com and we will send out an Entry Form.

The fishing has been a bit patchy over the holidays with Snapper being a bit elusive but the Kingi are really running with some nice fish being caught. I have heard of some very good fish being caught up around the top of the peninsular so hope they are on their way around to the Gulf.

Here's to tight lines.

Trophy & Pin List – Coromandel Recreational Fishing club 2015-2016 Season

Junior Pins: Heaviest Snapper on 2kg line – Kendyl Short; Heaviest Snapper on 8kg line – Layke McNeil; Heaviest Snapper on 10kg line – Quinn Burgess; Heaviest

Kahawai on 6kg line – Mitchell Crum; Heaviest Kahawai on 8kg line – Layke McNeil; Heaviest Kahawai on 10kg line – Quinn Burgess; Heaviest Trevally on 6kg line – Mitchell Crum; Heaviest Gurnard on 6kg line – Mitchell Crum; Heaviest Gurnard on 10kg line – Quinn Burgess; First caught Snapper on 2kg line – Kendyl Short; First caught Snapper on 8kg line – Layke McNeil; First caught Snapper on 10kg line – Quinn Burgess; Kahawai on 6kg line – Mitchell Crum; Kahawai on 8kg line – Chelsea McNeil; Kahawai on 10kg line – Quinn Burgess; Trevally on 6kg line – Mitchell Crum; Gurnard on 6kg line – Mitchell Crum; Gurnard on 10kg line – Quinn Burgess.

Junior Trophies: Heaviest Snapper 4.430kg – Layke McNeil; Heaviest Kahawai 2.795kg – Mitchell Crum; Heaviest Fish caught 4.430kg – Layke McNeil.

Senior Pins: First Snapper on 6kg line – Rex Brown; First Snapper on 8kg line – Max Larsen; First Snapper on 10kg line – Tim Moreland; First Snapper on 15kg line – Steve Burgess; First Kahawai on 2kg line – Yvette Short; First Kahawai on 4kg line – Margaret Burnie; First Kahawai on 8kg line – Raewyn Moreland; First Kahawai on 10kg line – Yvette Short; First Kahawai on 15kg line – Shavana Davies; First John Dory on 8kg line – Raewyn Moreland; First Kingfish on 8kg line – Allen McNeil; First Kingfish on 10kg line – Keegan Paynter; First Kingfish on 15kg line – Nikki Stephenson; First Paraore on 10kg line – Ty Visser.

Senior Heaviest Fish Pin: Snapper on 6kg line – Rex Brown; Snapper on 8kg line – Raewyn Moreland; Snapper on 10kg line – Margaret Burnie; Snapper on 15kg line – Steve Burgess; Kahawai on 2kg line – Yvette Short; Kahawai on 4kg line – Margaret

Burnie; Kahawai on 8kg line – Troy Evans; Kahawai on 10kg line – Steve Burgess; Kahawai on 15kg line – Clay Short; Kingfish on 8kg line – Allen McNeil; Kingfish on 10kg line – Steve Burgess; John Dory on 8kg line – Raewyn Moreland; Gurnard on 10kg line – Steve Burgess; Paraore on 10kg line – Ty Visser.

Senior Trophies: Heaviest Snapper 10.00kg – Steve Burgess; Heaviest Kahawai 2.776kg – Clay Short; Heaviest John Dory 3.130kg – Raewyn Moreland; Heaviest Kingfish 19.740kg – Steve Burgess; Heaviest Paraore 1.580kg – Ty Visser; Heaviest Gurnard .818 kg – Steve Burgess; Winner of Ladies Tournament – Snapper 7.255kg – Margaret Burnie; Heaviest Fish caught by a Male – Kingfish 19.740kg – Steve Burgess; Heaviest Fish caught by a Female – Kingfish 11.385kg – Nikki Stephenson; Most Meritorious Snapper – 6.050kg on 6kg line – Rex Brown; Most Meritorious Kingfish – 19.115kg on 15kg line – Steve Burgess.

Coromandel Community Recreational Society Trust Waikato Events Centre (Community Swimming Pool Complex)

By Debra Attwood

Pool hours from **2 February** will be:
Mornings: Monday - Saturday 6-8am
Afternoons: Tuesday, Thursday and Fridays 3-5pm. Weekends 12-5pm.
Entry Costs: Adults \$4, students and seniors \$3, preschoolers 0-5yrs \$1, spectators \$1. Concession cards are available as well. Call in to the pool and check out the great deals.



Surveying Services

Local assistance with subdivisions, site surveys and boundary pegging.

Call Brent Trail or Paul Graves

Now at 105 Kapanga Rd, Coromandel (Harcourts building)
www.surveyingservices.co.nz Ph 0800 268 632



GaiaDecorators LIMITED

PAINTING HOMES
ACROSS THE COROMANDEL

The Professional Finish For Every Building

Painting • Specialist Finishes • Wallcovering • Feature Walls • Maintenance

Mark Gaia 021 295 5532 | 07 866 7485
COROMANDEL | gaiadecorators@gmail.com
www.gaiadecorators.co.nz

Residential
Commercial
Free Quotes



www.jamesdrainage.co.nz

Excavators | Tip Trucks | Bobcats | Auger & Chain digger hire
Skip Bins | STMS Services | Septic Tank Services | Portaloo Hire

1020 Tiki Road, Coromandel
p. (07) 866 8308
e. jamesdrainage@xtra.co.nz



COROMANDEL.N.Z

866 8635

See meeting list for class times

Sport continued

Coromandel Golf Club

By Peter Gray

The Coromandel Golf Club promoted two successful tournaments over the last month with over fifty players teeing off in each event.

The Coromandel Hotel "Top Pub" Mixed Open was held on Saturday 7 January. The Men's Senior Div. was taken out by Allan Rose 67Net. (39pts) followed by Ross Mudgway and Ron Evans 38pts. In the Juniors Allan Beaver and David Lunn both recorded 62Net. (44pts), with Bruce Fitzpatrick 42, and Robin Attwood 41pts. The Ladies was won by Eugene Weimer 65Net (42pts) from Jenny Coatsworth 41, Judee Watene, Raewyn Wallace both with 40pts.

A big thank you must go to Stan Hill and his crew at the Top Pub for their continued support and his generous donations of prizes that go a long way to maintaining this day a continued success.

The other tournament was the Coromandel Xmas Tournament held on Saturday 10 December and organised by the Ladies Committee. In the Ladies Div. Lorraine Marshall 61 Nett won the day from Eugene Weimer and Carol Carson 67, Jenny Coatsworth 69, and Mary Holland 68. The Men's Senior Div was taken out by Ross Mudgway 61net (45pts), from Les O'Leary

43pts, Steve Richie 41pts, Brian "Doc" McLeod and Wiremu Watene 40pts. The Junior Div saw Allan Beaver 60net (46pts) carve up the field from Robin Attwood 45pts, Kevin O'Keefe, Dave Dudson 42, Stan Kendall 40.

The amount of effort by Ed, Keith and the volunteers in course preparation for these events needs to be acknowledged. As these tournaments were catered events, Lyn Whitcombe and her band of helpers for the food preparation is a major factor in bringing players back to Coromandel for these events.

My "poor mate" Ron Brooking recorded a best round of 49pts 57net on Wednesday 28 December. We tried to explain that it did not count towards the Club overall as it was outside the season – he still will not accept this – so needs to take it up with NZ Golf. The same thing happened to Darryl O'Keefe last year, however, he did not protest for as long – well maybe he did!

How times change – it just seems like a couple of weeks ago President Ed "Moisture Content" Buckett was cursing the rain – now is out at midnight praying for rain – must be pay back from something in his past.

Good time to join – full 12 months for your membership – a membership package to suit your needs. Phone (07) 866 7633.

Upcoming Events

Saturday 4 February – Maori Tournament (C)

Saturday 11 February – Open Day / Bob Riley Trophy (P)

Saturday 18 February – Stroke Play Championships 9.00am Seniors & Intermediates, 10.30am Juniors

Wednesday 22 February – Meat Pack / Laurie Olliff Trophy

Saturday 25 February – India Tyre Trophy

Coromandel Croquet Club

By Kaye Anderson

It's great weather for playing croquet even though the lawns are looking rather brown and dry. Combining skill and strategy is the challenge this game offers, plus the benefits of fresh air, exercise and plenty of laughs!

If you would like to join us, phone Kaye on (07) 866 8968, or just come along on a Tuesday or Saturday at 9.45am for a 10am start. The Croquet Club is in Woollams Avenue next to the Bowling Club

Coromandel Area School Sports

By Geoff Horton, Sports Coordinator

Two significant events dominate the first term sports calendar at Coromandel Area School to kick the 2017 year off. Students will compete in athletics and swimming sports for qualification for Thames Valley secondary school events later in the term and end of year sports awards.

It is clear that a willingness to be involved in school sport exists within Coromandel and that enthusiasm feeds nicely into plans to introduce community sport programmes that build confidence in participation at all levels. The goal to develop a coaching community is coming together nicely as parents look to opportunities to support and grow school sport.

2016 highlighted students are looking to try new sports, a good sign there is a growing confidence in school representation at Thames Valley events. It is exciting to observe the sport talent abundant within the student body and the wider community, the discovery of the resources and expertise embedded within Coromandel will no doubt lead to the emergence of a vibrant sporting culture within the school and town.

Working with Sport Waikato and the Thames Coromandel District Council, planning will continue into the exploration of new and viable sports for student and community participation and how traditional sport can be developed to meet emerging market demands.

- YOUR LOCAL Solar Design & Installation Specialist
- Grid Connected & Off Grid Energy Systems
- Energy wise electrical & lighting solutions
- Domestic & Commercial Electrical Services
- FULL SUPPORT & Service - Coromandel Peninsula

GOOD ENERGY



SOLAR ENERGY SOLUTIONS
DESIGN, INSTALLATION & SERVICE

Ph Simon on 021 242 3394

SOLAR SOLUTIONS
www.goodenergy.co.nz

Tangiario
Kiwi Retreat

Luxury bush chalets
Private outdoor spas
Massages available by appointment

Find your paradise...

Cafe, Restaurant and Bar
February opening hours
Sun, Mon, Tue, Wed, Thu 10am-4pm
Fri & Sat 10am-7pm
(Closed Mondays from 13th February)
Bookings advisable for evening meals or large groups.

A picturesque 1 hour drive North from Coromandel Town.

Ph 07 866 6614 www.kiwiretreat.co.nz
1299 Port Charles Road, Port Charles, Coromandel

BOWLING CLUB NEWS

Hi everyone and a belated welcome to 2017. More bowls and club activities after a quiet couple of weeks over the holiday period, although it seems we are still awaiting some good bowling weather without gale force winds!

The big social opener is four weeks of Twilight Bowls starting on Tuesday 7 February until Tuesday 28 February from 5.30pm. These social evenings have proved to be extremely popular, so please call Linda on 866 8440 to book your team in advance.

Wednesday 1 and Tuesday 7 February both feature 2x4x2 club competitions – if you have not played in this type of event before, and are free on these weekday dates, grab a partner (team pairs) and come along for a day's workout!! Thursday 9 February is the Summer Cup Challenge against Mercury Bay bowling club – always a highly fought for and prized win, with the summer challenge here and the Winter Cup challenge on their turf.

Club roll-ups are open to everyone on Saturday from noon for a couple of hours – all this activity leads up to our fabulous Seafood Tournament over the weekend of 4/5 March.

I cannot conclude without mentioning the Christmas party – this was hosted by the Bowling club for all members of CCC and the evening was a knockout success. After a splendid meal and a few (!) alcoholic beverages, the music quiz presented a challenge to the party goers, and the photo shown here features the Brains of Coromandel. These winning couples proved that not only do we have fun at the Club, we are also a very intelligent lot. Many thanks to Geoff Kingsmill for providing the soundtrack – he spent a lot of time finding and editing music tracks to match the quirks of the question mistress!!!!



Brain Drain at the party

RSA NEWS

The club has had good attendances on Fridays and Saturdays over the Christmas holiday – you can bring guests along with you and sign them in. The Whitianga Christmas lunch was another grand day out – it was a pity that there were not more members who were able to go, but the 12 who did attend thoroughly enjoyed the camaraderie, wonderful lunch and raffles.

RSA subs were due on 1 January and your new card will be sent to you as soon as the annual sub is paid.

The RSA Annual General Meeting will be held on **SATURDAY 18 FEBRUARY** AT 2pm and nomination forms for all positions are at the Club. Kevin Stone is now acting President and Alan Stewart is acting Vice President until the AGM. The RSA Women's section will hold their AGM in March.

Classifieds

Classifieds cost 30 cents per word – please email your words to corochronicle@gmail.com and I will give you my bank details to direct credit. Or call Debbie on 021 235 6648.

PROFESSIONALS

ALL ASPECTS OF TREE WORK done professionally. Coromandel based Dynamic Tree Care - Contact today 027 451 2224 or (07) 866 8177.

ARE YOU THINKING of having those needed jobs done? Whether it be Carpentry, Decorating, Tiling, I can give you advice and a free quote. Call Vaughan on (07) 866 7969.

BEGINNERS YOGA WITH BECKS IS BACK! Tuesday's at the Coro Gym from 5.30pm to 6.45pm, \$7. All are welcome and equipment is provided. Phone 027 407 0079 for more information.

BROKEN GLASS? Call Mike Coromandel Glass (07) 866 8869.

CABINETMAKER specialising in high quality kitchen design and build. Full workshop set up available here in Coromandel now. For a quote or ideas please call Stefan on 027 759 4887 or (07) 866 7787

CAROLYN'S CLOTHING AND HABERDASHERY: For all your alterations and repairs. Ph (07) 866 7865.

CARPENTRY: Windows, Doors, Decks, Kitchens. Sound Tradesman. Free Quotes. Vaughan Udall (07) 866 7969.

CLEAN UP - CLEAR OUT, Give GO GIRLS a shout! Cleaning, gardening, lawns & weed eating, give our skills a test let GO GIRLS do the rest. Phone Lizzie (07) 866 8810/021 148 5261.

COMPLETE PROFESSIONAL TREE WORKS. Dynamic Tree Care. Call now 027 451 2224 or (07) 866 8177.

COMPUTER FIX. Your local support and expert for computer repairs, upgrades, backup solutions, virus removal, software problems, purchase advice or tuition. Micha Wellnitz, Ph (07) 866 8932.

COMPUTER SOLUTIONS. Microsoft Certified Systems Engineer with over 15 years of IT experience providing solutions and support service for PCs, Laptops, Printers, Wired and Wireless Networks, Virus and Spyware removal, Data Protection and Recovery. Up gradations, Consulting, Design and Training. Contact: Dheeraj Bali Ph (07) 866 7550 Mob 021 207 1341 E-mail: dbali@vodafone.co.nz

COROMANDEL CATTERY & KENNELS (07) 866 8117, 027 433 1665.

COROMANDEL PICTURE FRAMER 30 years experience in all aspects of framing with an excellent eye for colour & detail. Please call me for an obligation free consultation. Servicing the Coromandel Peninsula. Ph Michelle 021 132 2890.

DIRTY WINDOWS? We'll clean them. Single storey domestic or business properties. Local Coromandel area. Call for a free quote Benjamin Rudolph 022 101 787.

FACE PAINTING by Tiffany. Evolution tattoo studio NZ. Most days during summer. 191 Kapanga Rd. Ph (07) 866 7802.

HEALING BOUTIQUE SUMMER SHOP. Beautiful Clothes, jewellery, shoes, natural products and Spiritual Readings....opposite The Pepper Tree.

HIRE EQUIPMENT available at Rob's Small Motor Repairs: log splitter, ride-on mower, push mower, large weed eater, rotary hoe, waterblaster. Call Rob's Small Motor Repairs (07) 866 7865.

HOME AND BUILDING MAINTENANCE. Qualified Joiner. Contact Tony Burton 021 337 484.

LAWNMOWER SERVICE AND REPAIRS: And all the parts for your DIY's. Wanting to change your car oil? We now have oil and filters. Call Rob's Small Motor Repairs (07) 866 7865

PAINTING AND WALLPAPERING: Neat tidy work. Free Quotes. Vaughan Udall (07) 866 7969.

PENINSULA MIDWIVES. Experienced Midwives Available. Fiona Kington 021 743 717 or (07) 866 0413, Jocelyn Yates 027 912 4104. Free pregnancy tests.

PIG HUNTERS. I can bone and roll your pork or mutton. Plain or seasoned \$30. Ph 021 0261 7945.

PROFESSIONAL QUALIFIED COROMANDEL ARBORIST. Fully equipped & insured. Dynamic Tree Care - Contact us now 027 451 2224 or (07) 866 8177.

RANCH SLIDER WON'T SLIDE? Call Mike Coromandel Glass (07) 866 8869.

SEWING & MENDING SERVICES, Lynda at Little Stella Design (blue house next to Museum). I also make home furnishings by commission. Telephone (07) 866 7855 or 027 227 5077.

STUMPGRINDING - Machine assisted stump removal, all sizes all areas. Ph 027 472 6627.

SUMMER IS HERE: Jobs to be done! Phone Vaughan Udall for a free quote (07) 866 7969.

THE LIGHTHOUSE STUDIO: Joinery/custom woodworking, furniture, Persian rugs and LOCAL ART. Between Coro Pies and Morrissey Automotive, down the green lane. 75 Wharf Rd 021 038 0923.

TILING: Wall and floor tile laying service. High standard of work. Free quotes. Vaughan Udall (07) 866 7969.

TREE WORK. Dynamic Tree Care - Coromandel 027 451 2224 or (07) 866 8177.

WINDOW CATCH BROKEN? Call Mike Coromandel Glass (07) 866 8869.

FOR SALE

CARPET CLEANER – Wertheim SEgo00 deep cleaner. Cost \$750. Sell \$200 ono. Ph (07) 866 8606.

NOW SELLING NATURAL INTERIOR AND EXTERIOR OIL for wood. Made in NZ by the Naturalhouse Company. Excellent product, easy to use. Available from The Lighthouse Studio, 75 Wharf Rd ph 021 038 0923.

SAMUEL - PARKER DINGHY 9 FT in good condition (07) 866 7861, 021 113 5576. \$350.

LOST

LOST 2.6 METRE WHITE INFLATABLE Tasman dinghy with wheels 18/12/16 from Heard's Bay, Te Kouma. Any info contact Bush (07) 866 7763 or (07) 552 0859 or alexbush@kinect.co.nz.

SITUATIONS VACANT

RELIABLE, EXPERIENCED CARPENTER (labour only) wanted to join small team in Coromandel Town. Own transport and tools preferred. Pay dependent on experience. Ring 021 173 7457 or email duncan@coromandelconstruction.co.nz

WANTED

CASH PAID FOR YOUR UNUSED or unwanted chainsaws Call in and see Rob at Robs Small Motor Repairs or phone 021 618 601.

VIDEO PLAYER WANTED Ph 020 4096 6361.

WANTED ALL LIVESTOCK. We inspect in the paddock. Also we transport every Thursday to Waikato's largest saleyards in Morrinsville. Phone Dave Coatsworth 0274 817 100.

WANTED FREE TRAILOR OR TRUCK LOAD OF TOPSOIL. Used or unwanted building timber. Please ph Yuri 020 4085 7305.

WORK WANTED

"FOR TREES" PETER NOVIS, climbing specialist, felling, topping, pruning, chipping and wood splitting. Fully insured. Phone (07) 866 7128, 027 636 3253.

STUMPGRINDING - Machine assisted stump removal, all sizes all areas. Ph 027 472 6627.

TREE SERVICE. Dismantling or pruning. Free quotes. Call Jeremy Haszard 027 421 0603.

PUBLIC NOTICES

COROMANDEL JUNIOR RUGBY CLUB We invite anyone interested in helping with coaching/ managing and/or parents keen to help with all the Junior Rugby grades. There will be a meeting held at the Coromandel Rugby Club on Sun 12th Feb 2017 at 5pm. Contacts: Club President - Justin Kerrison 027 836 3219, Andrew King 027 525 9737.

COROMANDEL RETURNED SERVICES ASSOCIATION INCORPORATED AGM will be held on 18 February 2pm at the club rooms, Woollams Ave. Items for agenda and nominations for executive to the secretary by 11 February.

EXHIBITION

IMPRESSIONS I, exhibition of paintings by Richard Chrisp and sculpture by Uli von Christoffersen at Hauraki House Gallery, Coromandel. Preview with Powhiri 11am Saturday 25 February. 11am-5pm daily till Wednesday 1 March.

Advertisers' directory

| Company | page |
|--|-------|
| 360 Discovery Ltd | 25 |
| Admirals Arms | 2 |
| Ann Kerr-Bell – Natural Medical Centre | 11 |
| CILT | 17 |
| Colville social services collective (Waitangi Day) | 17 |
| Combined Clubs of Coromandel | 31 |
| Coro Gym | 29 |
| Coro Time | 27 |
| Coromandel Accommodation | 13 |
| Coromandel Construction | 13 |
| Coromandel Garage Ltd | 16 |
| Coromandel Liquor | 20 |
| Coromandel Marine Engineering | 14 |
| Coromandel Marine Farmers' Association | 23 |
| Coromandel Plumbing (1986) Ltd | 26 |
| Coromandel Quarry Ltd | 13 |
| Coromandel Refrigeration | 36 |
| Driving Creek Railway | 14 |
| Dynamic Tree Care | 7 |
| Gaia Decorators | 29 |
| Good Energy | 30 |
| Harcourts | 18-19 |
| Himalaya Shop | 3 |
| James and Turner | 16 |
| James Drainage '97 Ltd | 29 |
| Llandem Consulting Engineers Ltd | 22 |
| Lynley Ogilvie – massage therapist | 26 |
| Mana | 22 |
| Mealbook | 6 |
| Mercury Bay Art Escape | 2 |
| Papa Aroha Engineering | 28 |
| Peninsula Electrical Services Ltd | 10 |
| Peninsula Pest Services | 10 |
| Purnell Jenkison Oliver | 4 |
| Richardsons Real Estate | 8-9 |
| Rob's Small Motor Repairs | 10 |
| Scott Revell Building Contractor | 22 |
| Scott Simpson MP | 12 |
| Star & Garter | 5, 21 |
| Steelcraft Ltd | 12 |
| Surveying Services | 29 |
| Tangiara Kiwi Retreat | 30 |
| TCDC | 15 |
| Te Korowai Hauora o Hauraki | 11 |
| The Hauraki Taxation Service Ltd | 6 |
| The Lighthouse Studio | 24 |
| Trinity Network | 35 |
| Waikato Regional Council | 27 |
| Waitaia Nursery | 16 |
| Yoga & Body Balance | 7 |

Every Monday

Coro Gym – Step/aerobics, Peg (07) 866 8635 8am
 Mahamudra Centre, guided meditation in gompas 8.30-9am
 Coromandel Hikers' Group, Hauraki House,
 Colin & Elspeth (07) 866 7137 9am
 Monday Walkers, Irene 021 157 8408 9am
 Colville Social Services Collective,
 Colville Hall, (07) 866 6920 9am-3pm
 Kohanga Reo o Kapanga, (07) 866 8417 9am-3pm
 Coro Gym – Sit and be fit, Peg (07) 866 8635 9.30am
 Coro Gym – Fitness and Fun, Judy (07) 866 8637 10.30am
 Scouts and Cubs, Scout Den, Hauraki House,
 Abby Morgan (07) 211 9790 3.30pm
 Coro Gym – Kick fit with Christajo, 155 Pottery Lane,
 021 033 9329 5.30-6.30pm
 Shrinking Violets, Betsie (07) 866 7076 5.30pm
 Coro Contract Bridge, Coro Ambulance rooms,
 Lyn (07) 866 8858 7pm
 Four-part harmony singing, Sue (07) 866 8833 7.30pm

Every Tuesday

Homeschoolers' gathering, Julene (07) 866 8005
 Mahamudra Centre, guided meditation in gompas 8.30-9am
 Pastel Artists Coromandel,
 Coromandel Aero Club Rooms (07) 866 7220 9am-mid day
 Colville Bay Pre-School, rear Colville School, cr
 (07) 866 8319 9am-3pm
 Coro Walking Group, Ruth (07) 866 7246 9am
 Colville Social Services Collective, Colville Hall,
 (07) 866 6920 9am-3pm
 Kohanga Reo o Kapanga, (07) 866 8417 9am-3pm
 Music and Dance, Elim Church- Preschoolers Dance Group, Dawn
 (07) 866 8150 9.30-11am
 Coro Ladies Golf, Peter (07) 866 7633 tee off 10am
 Yoga, Colville Hall, (07) 866 6612 10am
 Croquet, Woollams Ave, Kaye (07) 866 8968 9.45am
 Coromandel Playcentre, Woollams Ave 10.30am-1pm
 Narcotics Anonymous meeting, 021 314 467 12 noon
 500 card session at the Bowling Club, (07) 866 8886 1pm
 Coro Gym – Fitness and Fun, Judy (07) 866 8637 1pm
 Beginners Yoga with Becks, at Coro Gym, \$7.
 Contact 027 407 0079 5.30-6.45pm
 Ambulance training, Felix (07) 866 8279 7-9pm
 Coro Motorcycle Club, Star & Garter,
 John (07) 866 6776 7-9pm

Every Wednesday

Dharma Gaia, Meditation, (07) 866 7995 6-7am
 Dharma Gaia, Sitting & Walking Meditation,
 (07) 866 7995 7.30-9pm
 Coro Gym – Step/aerobics, Peg (07) 866 8635 8am
 Mahamudra Centre, guided meditation in gompas 8.30-9am
 Yoga with Tina at Waikato Events Centre 8.40-9.50am
 Colville Bay Pre-School, rear Colville School,
 (07) 866 8319 9am-3pm
 Colville Social Services Collective, Colville Hall,
 (07) 866 6920 9am-3pm
 Kohanga Reo o Kapanga, (07) 866 8417 9am-3pm
 Coro Gym – Sit and be fit, Peg (07) 866 8635 9.30am
 Coro Gym – Fitness & Fun, Judy (07) 866 8637 10.30am
 Coromandel Golf Club – men's, Hauraki Rd,
 Peter (07) 866 7633 tee off 12.30pm
 Scrabble Club, Joan for venue on (07) 866 7580 1pm
 Coro Tennis Club – club night, Gayle (07) 866 8063 4pm
 Wing Chun Kung Fu- Hong Kong Style,
 Chi Sau Club 027 283 0773 4.30-8.30pm
 Running Group, meet at rugby club grounds.
 Mark 027 338 6697 or (07) 866 7660 5-6.15pm
 Coro Gym – Pump with Betty, (07) 866 8635 5.30-6.30pm
 Discussion night-optional pot luck dinner, Mahamudra Centre,
 (07) 866 6851 dinner 6pm, meeting 7-8.30pm
 Walking & sitting meditation, Dharma Gaia Centre,
 (07) 866 7995 7.30-9pm

Every Thursday

Mahamudra Centre, guided meditation in gompas 8.30-9am
 Coro Walking Group, Ruth (07) 866 7246 9am
 Coro Art Group, St Andrew's Church,
 Val (07) 866 8911 9am-12pm
 Colville Bay Pre-School, rear Colville School,
 (07) 866 8319 9am-3pm
 Kohanga Reo o Kapanga, (07) 866 8417 9am-3pm
 Tai Ji, Top Floor, Waikato Events Centre,
 Sol (07) 866 8971 10-11am
 Guided meditations at the Havalona Pyramid 10-11am
 Coro Gym – Fitness & Fun, Judy (07) 866 8637 10.30am
 Coro Gym – Ukulele group practice for beginners,
 Peg (07) 866 8635

Croquet, Woollams Ave, Kaye (07) 866 8968 12.30pm
 Coro Community Garden, Glover St,
 Tai 022 601 7081 2-4pm
 Coro Gym – Kick fit with Christajo, 021 033 9329 5.30-6.30pm
 Yoga with Tina at Waikato Events Centre 5.30-6.40pm

Every Friday

Coro Gym – step/aerobics, Peg (07) 866 8635 8-9am
 Colville Bay Pre-School, rear Colville School,
 (07) 866 8319 9am-3pm
 Mahamudra Centre, guided meditation in gompas 8.30-9am
 Kohanga Reo o Kapanga, (07) 866 8417 9am-3pm
 Yoga for everyone, Anglican Church Hall,
 Katie (07) 866 6612 9-10.30am
 Colville Services Collective,
 Colville Hall, (07) 866 6920 9am-3pm
 Coro Gym – Sit & be fit, Peg (07) 866 8635 9.30-10.30am
 Coromandel Playcentre, Woollams Ave 9.45am-12.15pm
 Coro Gym – Fitness & Fun, Judy (07) 866 8637 1pm
 The Club, ph (07) 866 8813 open from 3.30pm
 Coro Tennis, Men's night, Gayle (07) 866 8063 4pm
 Coro Gym – Crazy Horse Productions,
 Natalie 021 048 9772 4.15pm

Every Saturday

Mahamudra Centre, guided meditation in gompas 8.30-9am
 Croquet, Woollams Ave, Kaye (07) 866 8968 9.45am
 Bowling Club Roll Up 12pm
 Coromandel Golf Club-club play, Hauraki Rd,
 Peter (07) 866 7633 tee off 12.30pm
 Coromandel RSA, Woollams Ave, ph The Club (07) 866 8813 2pm
 St Colman's Catholic Church-mass,
 Rings Rd, Frieda (07) 866 7872 5pm
 Prayers for dead and healing,
 Mahamudra Centre, (07) 866 6851 5-6pm



Every Sunday

Mahamudra Centre, guided meditation-in Gompas,
 (07) 866 6851 8.30-9am
 Elim Church Services, Rings Rd,
 Steve (07) 866 6900 10am-12 noon
 Coro Tennis Club-club play, Gayle (07) 866 8063 2pm
 Prayers for dead and healing,
 Mahamudra Centre, (07) 866 6851 5-6pm

Monthly
 RSA Women's Section Coromandel, Loes (07) 866 8053
1st Mon – Coro Patchwork & Quilters, Ambulance rooms,
 Jill (07) 866 7484 9.30am-3.30pm
2nd Mon – Friendship Group, Jocelyn (07) 866 7101
3rd Mon – Coro Patchwork & Quilters, Ambulance rooms,
 Jill (07) 866 7484 9.30am-3.30pm
3rd Mon – Alzheimer's Carers' Group, Retirement Village Hall, bring
 plate & koha, (07) 282 0453 10.30am
1st Tue – Coro Motorcycle Club general business
 John (07) 866 6776 7.30pm
2nd Tue – Coromandel/Colville Cmty Board, Council Chambers,
 (07) 866 1001 9am
2nd Tue – Public Trust, Harcourts, 0800 368 620 by appt
1st Wed – Coro Embroiderers' Guild, Ambulance Station, Jill
 Wilson (07) 866 7484 10am-3pm
1st Wed – Lions Dinner Meeting, Ambulance Rooms;
 Pres. Nigel Strongman (07) 866 8045 6pm
2nd Wed – Garden Circle, ph Julie Jensen for venue,
 (07) 866 7546 1pm
3rd Wed – Herb Federation NZ.
 Contact Ann Kerr-Bell 021 046 1647 9.30 to 11am
3rd Wed – Lions Business Meeting, Ambulance Rooms;
 Pres. Nigel Strongman (07) 866 8045 7pm
2nd Thu – Coromandel Writers' Group,
 Barbara (07) 866 8299 10.30am-2.30pm
4th Thu – Coro SeniorNet, school music room,
 Loes (07) 866 8053 1.30pm
3rd Sat – Luncheon Ladies, Lorraine (07) 866 8144 12pm
1st Sun – Coro School of Mines & Historical Sty/Museum,
 (07) 866 8711 4pm
1st Sun – St Andrew's Union church service, Rings Rd,
 (07) 866 8633 10am
2nd Sun – Christ Church service, Tiki Rd,
 Barbara O'Reilly (07) 866 8299 10am
2nd Sun – Young Eagles, Tiki Rd, Lisa (07) 866 2055 9am
3rd Sun – St Andrew's Union church service, Rings Rd,
 Hilda (07) 866 8633 10am
4th Sun – Christ Church service, Tiki Rd,
 Barbara O'Reilly (07) 866 8299 10am
5th Sun – Christ Church/St Andrew's share 10am

Coromandel Town Chronicle

Calendar of events Coromandel Town February 2017

| MON | TUE | WED | THU | FRI | SAT | SUN |
|---|---|---|---|--|--|---|
| COROMANDEL RUBBISH & RECYCLE TRANSFER STATION & E-CYCLE HOURS TILL SUNDAY 26 FEBRUARY Mon-Fri: 11am-4:30pm Saturday 10.30am-5:30pm Sunday & public holidays 10.30am-6:30pm | | | | | | |
| 6 Waitangi Day Free entry day to Coromandel Museum (see pg 20) Canas & Crimp II Exhibition starts (see pg 23) Mark Taipari at Admirals Arms (see ad pg 2) | 7 Twilight bowls (see ad pg 31) Discovering Buddhism: Presenting the Path (cont.) at the Anglican Church Hall (see Mahamudra article pg 13) | 8 CILT – learner driver licence workshop (see ad pg 17) | 9 Bowls Summer Cup Challenge (see ad pg 31) | 10 How Things Exist starts at Mahamudra (see pg 13) Karaoke at Admirals Arms (see ad pg 2) | 11 Canas & Crimp II Exhibition ends (see pg 23) Open Day / Bob Riley Trophy at Coromandel Golf Club (see ad pg 30) | 12 |
| 13 CHRONICLE DEADLINE – March issue content – 4pm | 14 Discovering Buddhism: Presenting the Path (cont.) at the Anglican Church Hall (see Mahamudra article pg 13) | 15 CILT – learner driver licence workshop (see ad pg 17) | 16 Grey Power Coromandel meeting at Coromandel Golf Club (see pg 16) | 17 Coromandel Music Society – Fiona Pears (see pg 24) Meditations on the Path to Enlightenment starts at Mahamudra (see pg 13) | 18 Stroke Play Championships at Coromandel Golf Club (see pg 30) RSA AGM (see ad pg 31) Jalapeno eating competition at Admirals Arms (see ad pg 2) | 19 |
| 20 Coromandel Patchwork and Quilters AGM (see pg 16) | 21 | 22 Meat Pack / Laurie Olliff Trophy at Coromandel Golf Club (see pg 30) CILT – learner driver licence workshop (see ad pg 17) | 23 | 24 Indian motorbikes visiting (see pg 6) Mindful photography starts at Mahamudra (see pg 13) DJ Tuku at Admirals Arms (see ad pg 2) | 25 Classy Chicks fishing competition (see pg 29) India Tyre Trophy at Coromandel Golf Club (see ad pg 30) | 26 Taizé song, reflection and contemplation in the Sanctuary at Mana (see pg 12) |
| 27 | 28 | | | | | |
| High tide 8.35am (2.9m), 8.54pm (2.8m) Low tide 2.14am (0.4m), 2.39pm (0.4m) | High tide 9.19am (3.0m), 9.40pm (2.9m) Low tide 2.58am (0.3m), 3.24pm (0.3m) | High tide 11.12am (2.9m), 11.31pm (2.8m) Low tide 4.47am (0.3m), 5.18pm (0.3m) | High tide 11.58am (2.9m) Low tide 5.32am (0.3m), 6.05pm (0.3m) | High tide 12.17am (2.8m), 12.46pm (2.9m) Low tide 6.21am (0.4m), 6.54pm (0.3m) | High tide 1.07am (2.8m), 1.37pm (2.8m) Low tide 7.14am (0.5m), 7.46pm (0.4m) | High tide 2.03am (2.7m), 2.33pm (2.8m) Low tide 8.12am (0.6m), 8.44pm (0.4m) |
| Make sure your event gets listed To get your event listed, email the details, your name and contact phone number to Debbie at corochronicle@gmail.com with the subject "event". Or post to Jude Publishing, PO Box 148, Coromandel. There is limited space available and will be published subject to space availability, with preference to not-for-profit groups. | | | | | | |
| New moon  Full moon  Tide times and heights from Land Information NZ for Coromandel Harbour. For Thames times -15min High and -18min Low. Note: Tide heights are different for Thames. | | | | | | |
| UPCOMING MONTHS | | | | | | |
| MARCH 4-5 & 11-12 Mercury Bay Art Escape – open studios 4-12 – Making Conversation exhibition (see pg 24) 5 – Family Fun Day at Mahamudra (see pg 13) | | | | | | |
| APRIL 14-17 – Cokville Festival www.cokvilleartsfestival.co.nz | | | | | | |

MON

TUE



TRINITY
NETWORK
REAL ESTATE

Rumour has it another Real Estate Company's in Town

Trust us when we say you'll want to hear what we're all about!



More Savings

| House Value | Standard Commission | Our Commission | Savings |
|-------------|---------------------|----------------|----------|
| \$300,000 | \$14,128 | \$12,075 | \$2,053 |
| \$600,000 | \$21,028 | \$15,525 | \$5,503 |
| \$900,000 | \$27,928 | \$18,975 | \$8,953 |
| \$1,200,000 | \$34,828 | \$22,425 | \$12,403 |

Trinity Network Commission is \$7500 + 1% of the sale price + gst

Standard Commission is based on 3.95% up to \$300,000 and 2% thereafter + \$500 admin fee + gst



More Services



Better Technology

Team Rob & John



Familiar faces under the Trinity Network Banner

Honest - Integrity - Commitment - Results!

Contact us today to discuss all your property needs.
Free market appraisal and confidentiality assured.

Rob Keatley

Real Estate Consultant

M: 0275 777 424

E: rob.keatley@trinitynetwork.co.nz

John McCaughan

Real Estate Consultant

M: 021 212 4423

E: john.mccaughan@trinitynetwork.co.nz



www.trinitynetwork.co.nz

REAA Licensed MREINZ

COROMANDEL REFRIGERATION & HEAT

Keep Your Cool, Keep Your Cash with Energy Efficient Deals

DAIKIN Double Deal



Daikin FTXS50LVMA inverter high
wall heat pump
Heating 6.0 (1.7-7.7)kW
Cooling 5.0 (1.7-6.0)kW

Daikin FTXS25LVMA inverter high
wall heat pump
Heating 3.4 (1.3-4.7)kW
Cooling 2.5 (1.3-3.2)kW

BOTH FULLY INSTALLED PRICE:

\$4997.00 incl GST*



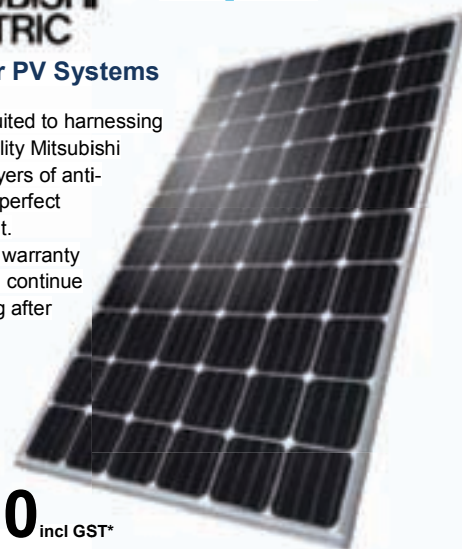
Super Deal

Micro Inverter Solar PV Systems

Coromandel is perfectly suited to harnessing the sun's energy. High quality Mitsubishi panels, coated with two layers of anti-corrosion material are the perfect solution in our environment. With an impressive output warranty of 25 years the system will continue to generate electricity long after the payback period. Why not have your bach generate income while vacant.

Packages from:

\$4997.00 incl GST*



DAIKIN Smashing Deal



Daikin FTXS50LVMA inverter high wall heat pump
Suitable for large living area or office. Premium brand at a budget price.
Heating 6.0 (1.7-7.7)kW
Cooling 5.0 (1.7-6.0)kW

FULLY INSTALLED PRICE:

\$2997.00 incl GST*



Great Deal



Smart Vent ventilation system

Smart Vent Positive Pressure ventilation systems draw fresher, drier air into your home from either the roof cavity or outside. This air is then passed through a high efficiency filter and introduced into your home. The introduced air forces out the moist, stale air that causes condensation, mould & mildew.

SV02 Two vents

For a home up to 80sqm
or one bedroom
Fully installed price:
\$2977.00 incl GST

SV04 Four vents

For a home up to 280sqm
Or three bedroom
Fully installed price:
\$3757.00 incl GST

SV06 Six vents

For a home up to 560sqm
Or four bedroom + 2 living
Fully installed price:
\$4497.00 incl GST

www.coromandelrefrigeration.co.nz

435 Kapanga Rd, Coromandel 07 866 8463

*High wall prices are strictly based on simple back to back installations; Prices include electrical connection to nearest suitable supply and an electrical certificate of compliance. Offer expires March 4th 2017 or while stocks last. *Mileage charges are applicable for rural properties. Smart Vent package requires adequate ceiling cavity. Easy Finance Terms Available. Free no obligation onsite quotation is available.