

February 2020
Volume 24 Issue 2

Coromandel Town Chronicle

Founded and owned by the Coromandel Business Association since 1996

FREE
Community Magazine



Getting hands-on with nature

SEE PAGE 5

Flower and Produce Show PG 6



Show is on
15 February
– so pick up
your entry
form now

New JPs PG 13



Champ of Champions PG 16





**20% off marked price
at COROTIME**

SHOP in COROTIME for swimwear, vintage style dresses, steam punk dress-up, vintage crystal and coloured glassware, pottery collectables, and furniture. There's something for everyone in COROTIME.

Bring this voucher for 20% discount off marked price.
Valid to 29th February 2020 (originals only)

Start your 2020 Christmas shopping in COROTIME and take advantage of our Summer promotion.

75 Kapanga Road, Coromandel Town Centre

Everyone knows the best place to go fishing is near a mussel farm. Please follow these guidelines to keep everyone safe.

- ↔ **Keep 30 meters** from working mussel barges at all times
- 🌀 **Don't tie-up** to a line being worked on
- 🪝 **Never cast your line** towards a mussel barge – farmers have been injured from flying hooks and sinkers
- ⚓ **No Anchors.** Tie-on to a longline buoy or use approved mooring hooks
- 🚤 **Minimise** your speed and wake
- 🚗 **Never** drive across the lines



www.coromf.co.nz



**A TASTE OF
MATARANGI**

4 APRIL 2020

SEARCH & RESCUE
LAND SAR
KUAOTUNU



TICKETS SELLING ONLINE NOW

atasteofmatarangi.co.nz

AND FROM • RICHARDSONS REAL ESTATE MATARANGI • WHITIANGA I-SITE • COROMANDEL ADVENTURES

A FABULOUS DAY OF FOOD, WINE
& LIVE BANDS BY THE BEACH

ALL ABOUT
WHITIANGA
See yourself here®

MORE FM
TODAY'S BEST MUSIC MIX

creativefuel
Websites, brands and campaigns

PUKU & KERRES
LIQUOR STORE MATARANGI

/Richardsons
Real Estate Ltd Matarangi / Matarangi
Licensed REAA(2008)

**Coromandel
Sights**
Photography

Chloe Jones
PHOTOGRAPHY

MATARANGI
Rate Payers Assoc Inc

COROMANDEL
life

THE MATARANGI
BEACH PAPER

HOLISTIC HEALTH
FOR IMPROVED HEALTH & WELLBEING

4 FOUR SQUARE

Coromandel Town Chronicle

Cover picture: Hannah and Charlotte Smith and participating in the MEG summer holiday programme while on holiday in the Coromandel

The *Coromandel Town Chronicle* is published by Jude Publishing Ltd on behalf of the Coromandel Business Association. It is delivered free to the Coromandel area.

Jude Publishing Ltd
PO Box 148, Coromandel 3543
www.coromandeltownchronicle.co.nz

For advertising please
email Debbie on
corochronicle@gmail.com
or phone 021 235 6648

If you have any news stories that you'd like included please email corochronicle@gmail.com or post to PO Box as above.

If you are not sure how to put an article together for publication then find tips and advice on the website: www.coromandeltownchronicle.co.nz/html/guidelines.html

The Coromandel Town Chronicle is printed with vegetable oil based inks by Print House Ltd, Hamilton. An accredited FSC and PEFC printer.

Coromandel Business Association's Mission Statement: To support business, partnering with our community board, to strengthen and encourage the development of Coromandel Town and environs.

Want to support the CTC?
Live out of town? You need an annual subscription.
\$48 (incl. GST) NZ postage only.
See contact details above.

Deadline for the next issue is 4pm Monday 17 February

Disclaimer: The publisher and its editors of the *Coromandel Town Chronicle* shall not be responsible in any way for opinions expressed in letters and articles contained in the *Coromandel Town Chronicle* or for loss or damage suffered by anyone in reliance upon the information contained therein. Further, no endorsement of any product or service featured or advertised in the *Coromandel Town Chronicle* should be implied or assumed.

Coromandel Business Association Disclaimer: The opinions of the editor do not necessarily reflect the opinion of the Coromandel Business Association. The Chronicle should be representing all parties and showing a cross section of feedback from the community and we believe this to be the case. The editor of any publication is entitled to a personal opinion and provided this is identified as such then this is acceptable to us.

ISSN 1178-721X (Print)
ISSN 1179-4895 (Online)

Editor's comment

A big thank you to our emergency services. What a great job volunteers do to save lives and protect property. Please heed the Fire Service warning regarding the total fire ban and protect our environment while it is so dry.

Lots of long letters to the editor and opinion pieces again this month. Most of the 1080 data being discussed is very old and 5G has been discussed lots in recent issues too, so I call for a break from letters on these subjects. Let's have some positive messages about what is happening in our community instead please.

Debbie

Coromandel Business Association policy:

The purpose of the Coromandel Town Chronicle is to showcase the region and its people. The Coromandel Town Chronicle is open for everyone to contribute, however the editor reserves the right to select the articles, advertisements and letters that are published in line with the Coromandel Town Chronicle's publication policy.

Letters and opinion

Wrongly accused in McGregor Bay

A recent article on the Stuff website (<https://www.stuff.co.nz/environment/117413703/council-questioned-over-unconsented-works-in-coromandel-wetland>) wrongly accuses landowners of constructing a floodgate in 2015. As landowners we deny this – the floodgate in question was actually constructed in 1971. TCDC gave residents permission to carry out repairs on the floodgate in 2015, subsequently the wetland is healthier now than it has ever been. Development of the wetland commenced in 1990 well after the culvert and floodgate were installed in 1971.

We are bringing the issue to the public's attention as we feel that some environmental groups are looking to alter/extinguish existing property rights by stealth.

Prior to the formation of the Long Bay Causeway the area was made up of a low-lying sandspit (or Chenier ridge) backed by an area of open tidal sand flats (Morgan, 2019). A wooden bridge was built connecting the spit to Long Bay sometime between 1936 and 1945. This was subsequently replaced by an in situ square 1.5 x 1.5 m concrete culvert and associated floodgate by the Coromandel County Council in 1971.

Residents support a healthy saltmarsh and mangroves inside the causeway. They appreciate the farmed environment at McGregor Bay and look after their land on their own terms. Pateke (brown teal) breed successfully, grandchildren and friends enjoy exploring the farmland looking for frogs, native fish and eels. We have no intention of turning land purchased as farmland into a swamp.

The Stuff article was unfair. Affected landowners were not included. A picture in the article shows a gate as though it stops all water entering the saltmarsh from the seaward side of the causeway. However incoming tide does flow into private property in the saltmarsh, upstream of the floodgate.

The article claims that water is prevented from inundating the entire saltmarsh area. However, TCDC's independent consultant 4Sight concluded that the land at the southern end of the saltmarsh is higher and so therefore receives less seawater (Morgan, 2019).

Forest & Bird are demanding that "unconsented council works in Coromandel wetland need to go". We say that the culvert and gate were constructed 45 years ago to provide access to Long Bay/Wyuna Peninsula and to protect private land from coastal inundation.

Regards

Marilyn MacKenzie, McGregor Bay, Coromandel Town

Oamaru Bay – safe swim zone

Have you noticed the black and white buoys at Oamaru Bay? Do you know what they mean?

Answer: a safe swim zone where no motorised craft are allowed to go.

Thanks to Harbourmaster Stu Crawley and the Waikato Regional Council for their response to my concern about the safety of swimmers at Oamaru Bay last summer. It's great to see an area at the northern end of the beach where people can picnic and enjoy the water safely.

Thanks

Kaye Anderson, Coromandel Town

Send letters to the *Coromandel Town Chronicle*, PO Box 148, Coromandel 3543 or email to corochronicle@gmail.com. Contributions should be kept short, and should not exceed 350 words. They must include name, address and telephone number. The editor reserves the right to reject letters or edit them for clarity and space.

Poetry
SPOT

Life

By Beryl van Donk

Life surrounds us with her colours,
Green everywhere sings in my brain.
I once saw a man tap tapping with his cane.
I pitied him his sorrow, but then
can I say "how blessed it is not me".
Perhaps there is a spirit
who pities me. Who knows I do not
tap all the senses and the glories
that God has given me.



more letters overleaf...

Letters/opinion continued

Spelling of Celtic

Although I of course fully support the original concept of the Celtic Fair, I would like to take issue with the opening paragraph of the article in the January Chronicle about why the Coromandel version is spelt with a "K". The ancient Britons were not "victims" of Romanised spelling – the Romans introduced spelling to Britain. Although the ogham alphabet was used in Ireland before this time, the Britons, like the continental Celts, adopted the Roman alphabet quickly and happily as an efficient means to both transliterate their languages and communicate with the larger (mostly Roman) world.

The word "Celt" is a modern English word which was reconstituted in the 19th Century from the Roman spelling. Its origins are murky and although it was first recorded in Greek, it may have been either a native Celtic word or a Greek origin exonym (one interpretation suggests the Greek for "tall ones"). Greek did use a "K", but this was used pretty much interchangeably with a "C". All foreign words such as "Celt" were written with a "C" in Latin, just as has nearly every Northern European language since. The recent use of "K" by English, German and Scandinavian languages dates from the last thousand years, much more recent than the era which the Culdian Trust speaks of. The pronunciation of "Celt", however, was with a "k" sound in the original Greek and Latin, and only changed to the "s" sound in the early Middle Ages, when Latin-derived languages began to pronounce "k" sounds before "e" as an "s". However, the Celtic tribes of two thousand years ago thought of themselves as individual tribal units, not as Celts. They bred and allied with Germanic tribes along the Rhine, some moved to the Balkans and Spain, adopting new names there. Pronounce it with a "k" or an "s", it's arbitrary and meaningless and just another case of the modern disease of cultural "offense-taking" due to undue sensitivity, ignorance of context and historical revisionism. Let's just all be friends, shall we?

From
Chris Brausch, Thames Coast

Increase rate fallen

In the Coromandel numerous native species have never recovered since 1080 and other poisons were introduced here. After stoat and rat trapping got going on the Moehau kiwi were increasing at a rate of 14.8% per annum. Since poisoning began in bait stations followed by aerial 1080 this increase rate has fallen. At Whenuakite, which has received numerous 1080 drops the kiwi increase is now 2%.

Regards

John Veysey, Coromandel Town

References: The 14.8% quoted is from a DOC assessment report from 2007. The 2% increase statistic has been provided by Mailee Stanbury of DOC.

Conservation Successes

Hi Debbie,

A couple letters in last month's Chronicle made me realise it's an important time to celebrate some conservation successes.

North Island robins are now resident and the flock is growing larger on Moehau. Robins were reintroduced to Moehau only 10 years ago after being locally extinct for perhaps a century. A colony of bats is resident and little blue penguins are enjoying higher nesting success near Port Charles than elsewhere along the coast.

On a private block near Papa Aroha, the pohutukawa and puriri are in full bloom and fruit, with new growth showing on ancient trunks. Five years ago, these trees were struggling to flower and survive. Kaka are resident, as they are also at Little Bay and Tuataewa.

A breeding pair of karearea – top predator New Zealand falcon – are resident in the Papakai area after decades of absence. Flocks of kereru congregate in Whenuakite, gorging on the native flowering and fruiting trees (that are also flourishing).

At night in Mahakirau Forest Estate, ruru are common along the roads and residents watch the birds hitting on swarms of puriri moths. Coromandel striped gecko, Archey's frogs, and Helms' butterflies – all endangered or at risk species – are resident here.

These are facts available to anyone who looks. They are not beliefs or opinions, subject to change. These results are due to sustained pest animal control in these areas.

Wouldn't it be great if the Coromandel Peninsula became known as the place that makes birds?

Cheers

Jeff Williams, Coromandel Town

Editor's note: I have checked the references to the statements in Jeff's letter in the January issue and they all appear correct.

5G Advertising

A few days ago I saw a strange ad aimed at our young generation suggesting 5G online cloud gaming to become the number one gap-filler for all our spare time. As a local computer repair person I am working with technology and I am following the big hype on 5G in the media. However the more I read the more I realise that 5G advertisements are the most demented attempt to plant the idea of cyber reality into our minds. We already have an over-abundance of electronic gadgets, internet technology and also enough e-waste on our planet. If this kind of technology would make our lives happier we should already be in paradise.

I believe 5G advertising is suggesting fictive consumer products that nobody actually needs, and that those imaginary objects are demanding this new generation of network to be rolled out as quickly as possible to save us and the planet. 5G has the potential to undermine society by enhancing total surveillance (see face recognition and China's social credit system). 5G as a technology for driverless cars, artificial intelligence, the Internet of Things, augmented reality and mobile cloud gaming etc. will certainly not make people's lives happier and not bring human society to a higher potential.

Despite the big hype on the global 5G roll out, I see no advantage or benefit for us here in Coromandel. Instead, why not offer a natural rural escape which in the long run could offer the rare opportunity to get away from the digital world and spend more time in nature and with real people. Coromandel – good for your soul, and EMF pollution free!

If you haven't done it yet, please sign the petition www.5gspaceappeal.org.

Regards,

Micha Wellnitz, Coromandel Town



Alpha Drywall
Fix, Stop,
Cove & Paint
since 1986

- Plasterboard Fixing, Stopping and Painting specialists
- All grades of stopping including Fibrous, Cove and GibBoard
- We specialise in wallpaper to paint finish upgrades
- Professional, reliable, quality service
- Free quotes

Phone Geoff 022 027 0290
PO Box 177, Coromandel

Email alphadry@gmail.com
AWCI (licenced trademan)

**Thinking about a renovation
or new build and need some advice?**

"Duncan is a very calm, reliable person. He gets on well with others and can see his way through problems or challenges."



coromandelconstruction.co.nz

duncan@coromandelconstruction.co.nz
(07)866-7796 021-173-7457

Hands-on Nature Fun

By Nat Munns

Moehau Environment Group Summer Holiday Programme

Once again our Summer Holiday Programme that we ran through January was a huge success. At the time of writing, with three more activities left to run, we have had 946 adults and children participate. We ran a number of new activities this year including: turning weeds into paper, leaf litter survey with screen printing, building a rat trap for conservation, build a tracking tunnel for your back yard, conservation dogs and making native clay critters.

The most popular activities were the Starlight Cinemas in the woolshed at Waikawau, Meet a Gecko in Coro Town, Nocturnal Walks at Waikawau and Kiwi by Night at Port Charles.

We also teamed up with Kiwi Aversion Trainer Liz to run an aversion session at Papa Aroha and had 35 dogs come through that morning!

A huge thanks to our friends and volunteers who were involved with making this year so successful by either running a session or offering support in other ways; Steph Parkyn, Mike Gilmer, Anna and Pete Sephton, Lettecia Williams, Katharina Hecht, Robyn Vinten, Mike Coley, Wally Gilmer, Terry Whitehouse, Jakob Büssemaker, Greg Van Der Lee, Kate James, Shayna Hewson, Doug and Jane Ashby, Richard Webster and Bronnie Kenchington. Also thanks to Driving Creek Railway, Tangiaro Kiwi Retreat, Paul Denton, Geoff and Karen at Papa Aroha and the Keltic Fair team for allowing us the opportunity to engage with all these people!

If you and your children missed out on the chance to experience a MEG Summer Holiday Programme activity then please keep an eye out for next January. Better yet, like our Facebook page or become a MEG member so you're kept up to date



Bits n Bobs from New Zealand's past 200 years

1840 - Treaty of Waitangi signed

1842 - Population est.
75,400 Maori,
11,848 non-Maori

1855 - Postage Stamps
first used in N.Z

1865 - the Capital of
NZ moves to Wellington
(previously Auckland and
before that Russell)

1958 - Emergency phone
number "111" established

2004 - Smoking is banned
in workplaces and
licensed premises

Dates supplied by the
Coromandel 200 working group

FLOORING XTRA

Locally owned and operated

Book Your FREE In Home Consultation Today!

- Free measure and quote
- Floor Prep
- Installation by qualified installers
- Resene Paint (Fagans Only)
- Carpet
- Vinyl
- Laminate
- Tiles
- Qualified Tiler on Staff
- Drapes & Blinds

ON ALL FLOORS FLOORING XTRA,
90 KOPU ROAD, THAMES 07 868 7608
thames@flooringxtra.co.nz

FAGANS FLOORING XTRA,
68 ALBERT STREET, WHITIANGA 07 866 2836
whitianga@flooringxtra.co.nz

SALES - SERVICE - REPAIR OF SMALL ENGINE EQUIPMENT • ROTARY HOES

LOCAL & COASTAL BUSINESS

facebook

COROMANDEL

SMALL ENGINE SERVICES

TRADE CERTIFIED
SALES - SERVICE - REPAIR
OF SMALL ENGINE EQUIPMENT

165 Wharf Road Coromandel Town
(located across the road from admirals arms (bottom pub))

WEED EATERS • HEDGE TRIMMERS • WATER PUMPS • GENERATORS • AUX OUTBOARDS • MINI BIKES

LOG SPLITTERS • RIDE ON MOWERS • CONCRETE CUTTERS • WATER BLASTERS • BLOWER VACS

• NGK PLUGS MOWERS • CHAIN SHARPENS / CHAIN SUPPLY • CHAINSAWS •

PHONE OR TEXT FOR A APPOINTMENT
021 0238 0347
SERVICING COROMANDEL PENINSULA

Writers Group

The Real World Interrupts

Story by Barbara O'Reilly

Walking; it's recommended, easy to do, doesn't require special equipment, although these days there are proper walking shoes which are comfortable and support the feet. Yes, walking, step, step, step, turning time into a repetition of steady beats, and my route is familiar, lulls the mind into thinking about nothing much. Meditative exercise you could call it.

Pause; halfway at the Top Pub, 10 more minutes and I'm at school. Step, step, step. Back to the semi reverie. I start to think about Donald Trump. His staggering soap opera, an unfolding tragedy of epic proportions. Once I studied Greek drama, now buried in a tangle of half forgotten memories of the characters and their dreadful destinies. I remark to myself, somewhere in this is the essence of what seems to be happening to Mr Trump. A blind, unknowing hero, blundering around oblivious, as are we at this time, of the destiny that awaits him, flailing, vainglorious, flawed, the plaything of fate, pushing his goals which he thinks he can see, and which the great tragedians teach us, are delusions. Ultimately there'll be a lesson, we hope. One day his rambling, incoherent action will be completed. And while we wait, we both fear and pity him. I'm thinking about when this end inevitably arrives, is this tragedy going to be an individual event for Mr Trump alone, or will we all find ourselves caught in the same net? At the end of a tragedy, the catharsis, the emotions stored up as the drama unfolded must be purged. It's called "moving on" today. How will it be?

The Greek audiences went away reminded that the behaviour of tragic heroes incurred consequences, the moral, psychological and political lessons are laid bare. "Those whom the gods wish to destroy, they first make mad."

I cross over the bridge. Not much water. Of course I do get a concentrated dose of Trump news on You Tube. I am sure there are plenty

of people in America who don't give what he's doing much thought, anyway not as much as I do. And plenty of people in America probably do not think about it as a tragedy unfolding, in the strict sense of the word. When I was growing up the real world interrupted our young lives – I thought that it was quite likely that there would be a nuclear war and if I survived it, the outlook was going to be a bleak nuclear winter. The doomsday clock ticked closer and closer to midnight, it was mentioned again just the other day. Then the question of what is more "real" – the quotidian routines of life; getting up, eating, walking to school, coming home, doing bits and pieces to amuse myself, maintaining the garden etc. Yes – the question – what seems more real – or can you even say that – real is real, so what does reality really mean?

Nearly at the school gate. I confess I still have a moment of hesitation, there's something tricky about opening it. So here we go.

Writers group monthly meeting summary by Sue Gilmer

Looking back over the past year and particularly our last few gatherings, many of us feel we have been set some "challenging" homework where we are given a starter topic to create a written piece of no more than 500 words. Last month's topic of "Oh, my God" was no exception sending some of us down the track of a few false starts before being happy with our final story. This month's starter of "The lost book" is hopefully more gentle on our writers. You may like to have a try at it yourself.

Our group of 12 meet once a month. We follow a set format, starting with spontaneous writing, then moving into the sharing of poetry and books. After our lunch break we read our homework set the previous month. There is always laughter, great discussions and growing friendships. Although our group is full at the moment, we do have a waiting list.

If you would like to find out more, please contact Barbara on (07) 866 8299

Coromandel Flower and Produce Show

By Robin Münch



15 February is just around the corner. Have you got your entry form? You can enter vegetables, fruit, flowers, preserves or baking and your children can enter the sand saucer competition. All the details are on the form which you can pick up from the Coromandel Town Information Centre or by emailing coroproduceshow@gmail.com

Not only are we planning a great competition, but we also have public viewing from 1pm. There will also be freshly baked scones, tea and coffee for sale, and lots of outdoor activities for the family to enjoy – costs are outlined below. We suggest that you also bring cash for afternoon tea, to purchase produce from exhibits that are being donated at the end of the show and to put in voting jars for the children's sculpture competition on the day.

Saturday 15 February at Citizens' Hall, Kapanga Road, Coromandel Town

Entries and registration – 9-10am

Judging 10.15am-12pm

Public Viewing and Outdoor

Activities 1-2.30pm

Public admission – Gold coin per family

Outdoor activities – \$1 per person

All funds raised will go to the Coromandel Town Information Centre.

Follow us on Facebook – Coromandel Flower and Produce Show. For further information phone Coromandel Town Information Centre on (07) 866 8598 or email coroproduceshow@gmail.com

SUBDIVIDING

THREE GREAT REASONS TO CALL US NOW

- ① **We guarantee all our work** - we'll get it right first time.
- ② **We get your titles on time and on budget** so there is no stress on you!
- ③ **We project manage the entire process** including resource consents, specialist reports such as geotechnical and traffic, Council requirements and construction. Relax - it's all taken care of!

Ask us if you qualify for our money back plan

0800 268 632

Surveying Services

WAIKATO ▴ THAMES/COROMANDEL ▴ BAY OF PLENTY

www.surveyingservices.co.nz info@surveyingservices.co.nz

Chartered Accountants

The Hauraki Taxation Service Limited

- **For out of town independent accounting advice**
- **Established 1982**
- **Approved agents for Inland Revenue Department**
- **Offices in Coromandel Town & Thames**

myob | BankLink



CASHMANAGER™ Smart Accounting Software
BY ACCOMPLISH

95 Kapanga Road, Coromandel
Ph/Fax: 07 866-8660

Em: coro@haurakitaxation.co.nz

Grey Power Coromandel

By John Rabarts. President

Article on Police phone numbers in the last Chronicle has brought a number of appreciative comments – including from the local Police – who think that the reporting in through the 105 free call number is going well and helping them with more effective policing. Thank you all for reading and commenting.

Trespassers

I hear regularly now of visitors – and some locals no doubt – who are found trespassing on rural and coastal blocks and properties. It seems that some of those trespassing are under the impression that the high price they have paid, usually online, to stay in a cottage or bach for a few days gives them right of access over all adjoining land including wandering in the bush, climbing high hills and crossing to get to the coast. Being able to see the coast from the road does not give right of trespass from the road to the sea. Nor does a partly overgrown track entrance suggest this is public land free for all to trespass. We do not have to have “No Trespass” signs or fences (though some ignore fences anyway) to indicate we do not allow trespassers. Most landowners are reasonable and will allow someone to cross land if they are asked. So tell your visitors that asking is a common courtesy and that trespass laws apply equally in the rural areas as in the cities and towns. I don't expect to go and camp on someone's front lawn in the city – nor do I expect to find someone camped in my paddock – having pulled the fence down to get to their selected camp site – or find a group on a hill top telling me that it is an old pa site and that anyone can go there as it is on some map. Maybe it is on a map – but more importantly it is on private land and requires permission for legal access. For those who may be confused, multiple owned Maori land is also private land for the sake of access, as is general title land owned by Maori. I have heard more than once the opinion that anyone can go on Maori lands as the Europeans/British/“white” people came and wiped out the local people in the “Maori Wars” so they took over all rights to go on any Maori land that was then left. Not true. What do they think the drawn out, and still stumbling along, Treaty of Waitangi claims and settlement process with the Crown is all about? It is about redressing unfair and illegal taking of land and other resources from Maori.

Coromandel Grey Power Membership is \$15 single member \$28 for two people in same household. Phone Carol Carson, (07) 866 7172 to join.

For comment and contribution to this monthly article, Grey Power Coromandel Newsletter, or other Grey Power business, please text message 022 611 5717 for John Rabarts, President Grey Power Coromandel. Do not try to phone this number or leave a voice message. I live out of range for voice calls or effective recovery of voice messages. If urgent I can respond to a text request by driving to somewhere in range of calls. Thankyou. Enjoy the fishing



Colville Harbour Care Celebration!

By Vanessa Edlsten



COLVILLE HARBOUR CARE
Te Umangawhā o Ngā Waka

It's time to party people!

Come and learn about what Colville Harbour Care (CHC) has been up to and help us celebrate all it has achieved so far. With three years of nursery-building, community potting parties, tree-planting, fencing, weed management, pest management, environmental monitoring (and more!) we have many people to thank for the success of CHC.

Most exciting of all, we will be unveiling our stunning new mural and interpretive signs!

Held at Colville Hall, **Sunday 23 February** 2-4pm and open to the public.

Festivities include free food, drinks and CHC themed games. Bring along the whole family and learn a little more about the wonderful wildlife and diverse environment of the Colville area.

Patchwork and Quilters

By Bev Mayhead

The Patchwork and Quilting ladies are chomping at the bit itching to get back and start the year. So now we will have our first group day on 20 January. It is wonderful that some of us are so keen!

By the time you read this our committee will have set a timetable for the year, and our AGM is on **17 February**.

Our first workshop day is with Barrie Ashton from “Wonderfil Threads” and she will be educating us on the uses and advantages of all different kinds of specialty threads suitable for our individual projects.

Work is underway for our Coromandel 200 quilt and ideas are manifesting. More on that later.

We welcome new members, just call in and say hi.

Our meetings are held 1st and 3rd (& 5th) Mondays of the month 9.30am-3.30pm, St John Rooms, Tiki Road, Coromandel. President Raewyn Penrose (07) 866 8880, Secretary Sharon Currie (07) 866 8762

TREE WORK

Call 027 451 2224
or 07 866 8177

www.dynamictreecare.co.nz
Email: dynamictreecare@gmail.com



/Richardsons

Real Estate Ltd MREINZ / Coromandel
Licensed REAA2008

Meet the team... Kim, Robyn,
Melissa, Laurie-Ann & Lynne



* Two STUNNINGLY private pasture/bush blocks * Harbour, gulf, island, rural & golf course views * Excellent building sites * Right of Way access * Come & live the lifestyle! * **Lot 2 - approx 6.25ha = \$690,000; Lot 3 - approx 5.93ha = \$745,000**



* 'Coromandel Seaview Motel Style B&B' * Majestic views of Long Bay, McGregors Bay and the inner harbour * Spacious 3 bedroom home + 4 fully equipped apartments * Massive decking * Garage/carport/boat shed * **\$1,420,000 + GST (if any)**



* As cute as they come and graced with yesteryear's charm! * 2 bedroom miners cottage * Open-plan living (fireplace & French doors) * Private covered rear decking * Large garage with attached studio room * Great vegie gardens * **\$490,000**



* A hole in one...? * This awesome 2,495m2 section is approx 50m from the golf course * Close to town yet with a great rural atmosphere * Position your new home to secure a northerly aspect * Includes a 6m x 2.4m container * **\$455,000**

/Richardsons

Real Estate Ltd MREINZ / Coromandel
Licensed REAA2008

Proudly making real estate
a reality for Clients and
Customers for over 59 years

www.richardsons.co.nz

151 Kapanga Road, Coromandel

Ph: 07 866 8900 ~ Kim 021 533174

Robyn 021 448975 & Melissa 027 2498287

Rental Manager ~ Laurie-Ann 027 9276368

Stage 3 of the brilliant Greenhills subdivision is selling well, with only 5 sections remaining. They are priced from \$279,000 and you have the choice of lot size from 869m2 to 1,070m2. Start talking to your builder or selected building company to design your new home now! Covenants apply.



* A brilliant permanent or weekend hideaway at Amodeo Bay * 3 brm home * Great decking * Sea/bush views * Car/boat port * **\$680,000**



* Elegance Personified! * Stunning 3 brm Villa * 'Summer bbq/house' * Studio/art room * 1,305m2 section * Garage * Landscaped * **\$PBN**



* A great weekender at Waitete Bay * 2 brms with open-plan living & conservatory * Decking * Plenty of vehicle/boat parking * **\$715,000**



* An amazing opportunity to purchase approx 13ha (comprising two Titles) in the heart of Papa-Aroha * Explore your options * **\$PBN**



* The 'Woolshed' block * Approx 13.2ha at Papa-Aroha * Rolling to steep pasture * Small pine plantation * Gulf views * **\$510,000**



* Te Kouma lifestyle * 12.4ha of rolling pasture land * Harbour & Gulf views * Large 3 brm (2 en-suite) home * Double garage * **\$1,295,000**



* Brand new in Greenhills * 3 brms (master en-suite) * Open-plan living * Option to choose your own décor colour scheme * **\$710,000**



* It's time to create! * Newly Titled 1,406m2 section * Fantastic selection of specimen & native trees * Build your new home * **\$315,000**



* Business for sale - "Coromandel Meatkeeper" * A dedicated butchery with a loyal clientele * Main street setting * **\$75,000 + SAV + GST (if any)**



Plant Based Eating Group

By Nalan Kirsch

At our first gathering last month we talked about how to embrace plant-based eating, the importance of nutrition and organically grown food, climate change, the benefits of sustainable agriculture, and much more. Thanks to everyone for coming during such a busy time. It was very nice to meet with likeminded people who are passionate about food and the environment. In addition, my gratitude goes to St John and its volunteers. We are so lucky to have a well cared for venue in

our town. Thank you!

I kick-started the workshop by demonstrating a few recipes from my recipe collection; almond milk, oat milk, mashed pea dip, stuffed capsicums and chia pudding were on the menu. (I felt a bit like Nigella, only without the cameras). We all loved the tasting part, and the winner was – the stuffed capsicums!

I love the traditional way of stuffing veggies using rice, herbs and spices, currants and pine nuts. At the workshop I cooked a modernised take on it from the Goodfor Blog using quinoa instead of rice, see recipe below.

Stuffed Capsicums

Ingredients:

- 4 capsicums
- 1 cup quinoa
- 2 cups of water
- 1 cup chopped tomatoes
- 1 cob of corn shucked, or use tin
- 1 tbsp chopped fresh oregano or marjoram
- A handful of fresh coriander
- 1 tsp paprika, 1 tsp cumin (ground)
- 1 clove garlic – optional



Stuffed Capsicums – a hit at the Plant Based Eating Group

Coromandel Contract Bridge Club

By Judy Bronlund

After the summer break it is time to start playing bridge at the club again. We have rearranged our programme, this year and the first competition will be starting on **Monday 3 February**. Our first night back is 27 January. We play at the St John rooms, new members are welcome to join us.

Contacts Lyn (07) 866 8858, Val (07) 866 8730



***The perfect finish
to your home or
bach – beautiful
wooden joinery***

Ruamahunga Bay Joinery
email info@woodenjoinery.co.nz
www.woodenjoinery.co.nz

Salt and pepper and 3 tbsp olive oil

1) Thoroughly rinse and drain the quinoa. Put water and quinoa into a saucepan and bring to the boil, then reduce to simmer until all the water has been absorbed, add more water if needed. This can be prepared a day in advance.

2) Preheat oven to 190° C.

3) Wash capsicums, then lengthwise cut them in half, remove seeds.

4) Put cooked quinoa into a bowl. Add chopped tomatoes,

herbs, corn, garlic, spices, salt and pepper and oil, stir well until all blended.

5) Generously stuff the capsicums with the quinoa mixture. Place the stuffed capsicums on an oiled baking tray, drizzle more oil on capsicums, bake for 20-30 min until tops turn golden.

Have a lovely summer!

Our next gathering will be in mid February. Watch local social media pages for the event, or call/text for more info or if you'd like to get involved 021 515 707

Hot Spot**News from Coromandel Fire and Emergency**

By Rob Chappell

Thank goodness we live in Coromandel and not anywhere over the ditch. Right now while its getting dry here – we have no comprehension of the devastation and the incredible loss and suffering going on in significant portions of Australia.

On the Coromandel Peninsular we have a total FIRE BAN – that means no fires but we are only just starting to dry up seriously. Heaven forbid we get to the fire levels Australia is experiencing right now. This is still a very good time and a reminder of your personal fire protection – while we will respond as soon as we can if you call 111 this is not instant – make sure your smoke alarms are working. Make sure you have space around your home from vegetation and right now most important – NO FIRES.

Good old Global Warming advises that we will be getting hotter and drier over time. Whether you believe in Global Warming or not the reality is that Aotearoa is getting warmer, where once the weather person advised that Napier and Christchurch and maybe Blenheim were to reach 30°C at times over summer – now look at the map – even Invercargill is getting high 20's and significant areas of the remainder of the country close to 30°C.

For Coromandel we have had little rain now for more than a month. Added to this, strong westerlies and the Fire Weather index (FWI) is rapidly rising. The FWI is that indicator that advises as to how dry conditions are becoming. It combines all the elements of available burn material, with humidity, temperature, wind etc. to provide an indication of the level of fire danger i.e. from low to extreme. This information allows Fire Managers to plan to some extent for the dangers.

On the positive, thank you to all those who came to our town for the annual Keltic Fair. For those who took advantage of the Brigades car parking opportunity “thank you”. A significant portion of the five dollar parking fee we collected from you will go once again to Child Cancer – The Leukaemia Foundation through our Sky Tower Challenge team. We believe this is one way we too can contribute to others less fortunate than ourselves.

So the message this month – NO FIRES PLEASE – we will get called out and we will put your fire out.

Rob's 
Small Motor Repairs

**Come along and see us in our new shop at
18 Kapanga Rd (old 4Square)**

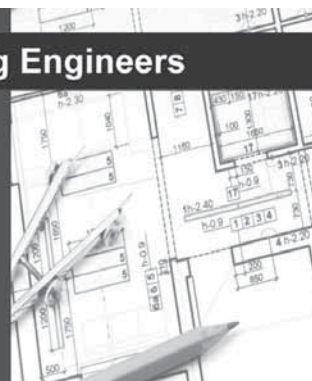
Rob & Carolyn 866 7865 or 021 618 601

Llandem Consulting Engineers

Derek Stewart
CP Eng MIPENZ

- Structural
- Civil
- Geotechnical

llandemengineering@gmail.com
(07) 866 6704
027 442 4234



Wild things

By Neville Cameron

Our Dotterels and our oystercatchers finished nesting in early December, without being flooded by high tides, but only one chick each.

The oystercatchers herded their chick away from our house immediately and are out on the mudflats most of the time.

The dotterel chick was totally autonomous and did its own thing and runs around on the lawn foraging. Its parents try to decoy us away when we are hanging out the washing.

The chick prefers foraging on the lawn instead of on the mudflats, I don't know if this is usual. It is now growing feathers and will soon be able to fly.

When the chick cannot fly it is totally vulnerable to cats and we had to chase away a stoat that was seen by Liz.

The parents are always in the background and even come up our steps and chirp at us if they are worried.

Last year was a total disaster, whereas this year the weather and tides have been perfect, and I feel both privileged and blessed to have these birds.

McGregor Bay Wetland Society welcomes photos of wildlife in our area.
mcgregorbaywetland@hotmail.com



Mahamudra Centre for Universal Unity

By Jaki Chalmers and Jan van der Vliet

The centre has had a very successful summer opening to visitors and accommodating guests through our website and Booking.com. Making the most of the beautiful summer weather we offered yoga classes outside on the lawn which were followed by morning meditations. Opening up the centre in this way creates a fantastic relaxed atmosphere adding to the richness of Colville as a tourist attraction and touches people on a deeper spiritual level. Thank you to the community for your ongoing support, be it sending a lost traveller our way to volunteer; general kindness or the openness that Colville is famous for.

2020 has started with tragic and unsettling events with bushfires and conflicts in the world. It is in these times that we develop resilience and by cultivating an open heart through understanding and kind action these changes are easier to handle. Mahamudra seeks to support people by providing a haven and with our retreat programmes as well as spiritual practices.

We are having a Working Bee, for our wonderful grounds and gardens, on **22 February** and possibly the 23rd. Do please let us know if you are coming so that we can plan the catering and tasks. Our heartfelt gratitude and a vegetarian lunch will be provided.

24 February is the Tibetan New Year commonly referred to as Losar. It is a very important Buddhist festival and the following 15 days are very auspicious and are called the 15 days of Miracles. A week of practices will be scheduled and open to all for free.

February teaching retreats

14-16 February – The 16 guidelines for a Happy Life

24-27 February – Calming the Mind with Wisdom.

15 Days of Miracles Program. For a full Schedule visit our website.

HE Yongzin Ling Rinpoche program outline

6 March – Long Life White Tara teaching

7 March – 37 Practices of a Bodhisattva

8 March – 37 Practices of a Bodhisattva and Orange Manjushri Initiation ceremony

For details please visit www.mahamudra.org.nz or call (07) 866 6851

JAMES & TURNER

KITCHENWARE · PAINT

HARDWARE · GIFTWARE

FISHING · CAMPING

MARINE · GARDENING

PLUMBING · ELECTRICAL

Grant Webber

Ph: 07 866 8805

info@jamesandturner.co.nz

search "James & Turner"

James & Turner 2014 Ltd

131 Kapanga Road

P.O. Box 16

Coromandel Town

Coromandel Town

Seafood Fest

Saturday May 2nd 2020

9am – 4pm

Coromandel Area School

\$2.00 entry fee



www.coromandelseafoodfest.com

Ph: 027 4665 131

Coromandel Independent Living Trust

Welcome back! We hope you're having a great summer. After a lovely break we are back open at the Resource Centre providing community support, advice, internet access, printing and essential services to strengthen the community. We have some excellent new staff, and a few changes internally. Rochelle is no longer on the front desk, so from now on you'll be greeted by Wikitoria or Jasmine.

Towards an age friendly Coromandel – Community Assessment

In December CILT was fortunate to receive a grant by the Office for Seniors to carry out an Age-friendly Community Assessment, including establishing a group of seniors to drive the setting-up of a Senior Hub with CILT's support. The purpose of the assessment is to improve the lives of older people in the Coromandel-Colville ward, with a focus on the wellness of older people as a way forward.

CILT recognises that the growing aged population in our ward brings with it the need to assess how we can improve things for our seniors. The result will be a report which will be fundamental in evaluating how the community addresses needs and prepares for the future. It will be a benchmark for the Community Board to work with in regards to becoming an Age Friendly ward.

Luana Johnston will be carrying out this survey from February to June this year. She will be surveying residents aged 55+. If you are interested in being part of this project – which has the potential to be of huge benefit to our community – and fit into this age bracket please leave your name and number with the Resource Centre on (07) 866 8358.

Spark JUMP

Through the Spark JUMP programme we are offering subsidised wireless broadband for families with school aged children who do not have a current internet connection – or if the existing connection is unaffordable. There are no contracts or credit checks, and no long term commitment required. For \$10 you receive a wireless modem (which doesn't require a phone line) loaded with 30GB of data which will last for one month. Top-ups are \$10 per 30GB from then on. To get started visit us at the Resource Centre. We run intake sessions every Tuesday at 3pm, and it takes about 20 minutes to get started.

Transport Services

The Coromandel Community Services Trust run a regular shuttle service to Thames each Thursday. We can pick you up from your home (within town limits or on route) at 9am and return from Thames at around 3pm. The CCST van has a chair lift so can easily accommodate those with mobility issues when required.

To book a seat please phone the resource centre on (07) 866 8358 Cost: koha – suggested \$6 each way.

We have also been running regular monthly outings in and around our wonderful Peninsula. This gives many residents a chance to take in the sights, visit places they may not ordinarily go and to interact with others. Some of the places we have visited include Kuaotunu Bird Rescue, a trip to the movies in Whitianga, and a picnic at Whangapoua Beach. We'll continue to run these as long as there is interest, so any suggestions for destinations are most welcome.

In February we will be heading to Colville where you can visit the Himalaya Shop and browse Rob and Anette's wonderful collection of giftware, knick-knacks and clothing then have lunch at the Foragers Kitchen or a real fruit ice cream at Hereford 'n' a Pickle, followed by a stroll along Colville's foreshore. The van will leave Coromandel at 10.30am on **Friday 21 February**. Contact the Resource Centre (07) 866 8358 to book your seat.

He aha te mea nui o te ao
What is the most important thing in the world?
He tangata, he tangata, he tangata
It is the people, it is the people, it is the people

We are open 9am-3pm Monday to Thursday



Hon Scott Simpson MP For Coromandel

Coromandel's Rescue Helicopter Must Come Back

Not having an emergency rescue helicopter based here on the Coromandel has been both a shock and a worry to locals and visitors alike.



For the last twelve years we've had a rescue helicopter, crew and paramedics in Whitianga over the summer peak and at long weekends.

This summer Coromandel people in urgent need of medical assistance have been forced to wait while a machine from as far away as Tauranga, Hamilton or Auckland has been dispatched and if one was available for dispatch.

About eighteen months ago local people fought a vigorous, loud and effective protest when talk of removing the local Whitianga service was first suggested. There were petitions to Parliament and questions in the House, outrage on talkback radio and in social media. The largest ever protest meeting in Whitianga's history was held at the helicopter hangar with over 3,500 people turning up.

As a result assurances were given by the Minister of Health... we were told there would be "no reduction in services for the Coromandel". People took him at his word and most of us went into the end of last year confident a machine, crew and paramedics would be stationed at Whitianga this summer.

Sadly we were wrong.

We've been let down and in my view deliberately misinformed. It's now clear the intention was always to take the service and security it provides away from Coromandel and the people who live and holiday here.

What's worse, it's been a policy decision pure and simple. It's not a funding issue. There has been a decision to prioritise the needs of Auckland ahead of people on this peninsula.

So now we must fight back. We must fight to have the service restored.

Lives are at risk and the stories told of people who owe their own life to having a rescue helicopter here on the Coromandel are too numerous to ignore.

At a time of human emergency the so called "golden hour" can mean the difference between life and death. Having to wait for a machine to come from Tauranga, Hamilton or Auckland can never be as good as having one located right here.

There is a petition circulating and if you are as concerned as I am about not having a rescue helicopter here, please make sure you sign it.

**JAMES
DRAINAGE LTD**
WWW.JAMESDRAINAGE.CO.NZ

Excavators | Tip Trucks | Bobcats | Auger & Chain digger hire
Skip Bins | STMS Services | Septic Tank Services | Portaloo Hire

1020 Tiki Road, Coromandel
p. (07) 866 8308
e. jamesdrainage@xtra.co.nz

Scott Simpson
MP for Coromandel

P Thames 07 868 3529
Kaiawa 09 232 2588
Kaitiaki 07 549 4312
E mp@coromandel.parliament.govt.nz
W www.scottsimpson.co.nz

National
Funded by the Parliamentary Service, authorized by the House of Representatives





Coromandel Town welcomes its new Justice of the Peace

Justices of the Peace have been around since 1361, and in New Zealand since 1814. This is a voluntary role and all the J.P.s are usually busy people. However one of us can usually be found to assist you when you need something done.

Coromandel Town's newest Justice of the Peace, Linda Walsh, has been sworn in, and she now joins our local team to help you and the community with witnessing your signature, certifying documents, or with processing Statutory Declarations and Affidavits etc. Please have photo I.D. available, and if you are wanting a copy of a document certified, do remember to bring the original with you.

Justice of the Peace folk in Coromandel and Districts are: Alley Davey in Little Bay (07) 866 6962, Liz Oliver in Coromandel Town 021 077 6361, Peter Pritchard in Coromandel Town 027 489 4269 or (07) 866 8931, Linda Walsh in Coromandel Town 021 816 164 or (07) 866 7177, Jane Bartrom in Coromandel Town 027 286 6166 or (07) 866 8296, Heini Gujer in Manaia (07) 866 7511.

Carlene Carmichael has opted to retire as a Justice of the Peace. We thank her for her many, many years of service.

Your local Justices can also simply be found by Googling "find a J.P. nz".

Three new Justices were sworn in at the Thames Courthouse by Judge Bidois on Monday 18 November. Pictured (l-r) are Judge Bidois, Linda Walsh (Coromandel), Susan King (Thames), Toby Adams (Hauraki District Council Mayor) and Dorothy Campbell (president)

Pick It Up Now

By Jo Sanderson

Plogging and plawking – who knows what these words mean?

For those of you who haven't heard of Plogging or Plawking, Plogging is a combination of jogging while picking up litter and Plawking is walking while picking up litter.

These started as an organised activity in Sweden around 2016 and spread to other countries in 2018, following increased concern about plastic pollution. As a workout, it provides variation in body movements by adding bending, squatting and stretching to the main action of running, hiking, or walking.

Pick It Up Now have got Plogging and Plawking groups on Facebook with the aim of members to get in touch with each other when they want to go out for a Plog or a Plawk. If you are keen to get involved, join a group and reach out to others that may be near to you – or encourage your friends to like our page, join a group and off you go. These are in their infancy so we need more people to get involved.

You can just make your own plans when and where you go, but would love you to post some photos of some rubbish that you pick up!

Pick up planned

I am planning a Plawk along Long Bay on **Sunday 9 February** at 9.00am. Anyone interested, please meet at the tyre swing by the beach.

Bring your own rubbish sack / bag and gloves if you want them.

I have some awesome spot prizes to give away to some lucky people!

If you want to know any further information please email: piuncoro@gmail.com or phone Jo on 022 050 3005. Please check our Facebook page www.facebook.com/Pickitupnownz/ for any updates or cancellation due to weather



COROMANDEL & AUCKLAND FERRY

valid to 5 April 2020

Departs Auckland: Pier 4, Quay Street

	M	T	W	T	F	S	S
28 Oct - 03 Nov	8:45 am	8:45 am	-	8:45 am	6:40 pm	8:45 am	8:45 am
04 Nov - 22 Dec	-	8:45 am	-	8:45 am	6:40 pm	8:45 am	8:45 am
23 Dec - 29 Dec*	8:45 am	8:45 am	*	8:45 am	8:45 am	8:45 am	8:45 am
30 Dec - 5 Jan	8:45 am	8:45 am	8:45 am	8:45 am	8:45 am	8:45 am	8:45 am
6 Jan - 9 Feb	8:45 am	8:45 am	8:45 am	8:45 am	6:40 pm	8:45 am	8:45 am
10 Feb - 5 Apr	-	8:45 am	-	8:45 am	6:40 pm	8:45 am	8:45 am

Departs Coromandel: Hannafords Wharf

	M	T	W	T	F	S	S
28 Oct - 03 Nov	4:30 pm	3:00 pm	-	3:00 pm	8:45 pm	4:30 pm	4:30 pm
04 Nov - 22 Dec	-	3:00 pm	-	3:00 pm	8:45 pm	4:30 pm	4:30 pm
23 Dec - 29 Dec*	3:00 pm	3:00 pm	*	4:30 pm	3:00 pm	4:30 pm	4:30 pm
30 Dec - 5 Jan	3:00 pm	3:00 pm	4:30 pm	4:30 pm	3:00 pm	4:30 pm	4:30 pm
6 Jan - 26 Jan	3:00 pm	3:00 pm	3:00 pm	3:00 pm	8:45 pm	4:30 pm	4:30 pm
27 Jan - 2 Feb ¹	4:30 pm ¹	3:00 pm	3:00 pm	3:00 pm	8:45 pm	4:30 pm	4:30 pm
3 Feb - 9 Feb	3:00 pm	3:00 pm	3:00 pm	4:30 pm	8:45 pm	4:30 pm	4:30 pm
10 Feb - 5 Apr	-	3:00 pm	-	3:00 pm	8:45 pm	4:30 pm	4:30 pm

Auckland - Coromandel

	ADULT	CHILD*	FAMILY*
ONE WAY	\$67.00	\$42.00	\$191.00
RETURN	\$103.00	\$65.00	\$292.00

*Child: 5-15 years inclusive | *Family: 2 adults + 2 children.

Travel Information

› A ferry bus shuttle will transfer you to and from Coromandel Town (Samuel James Reserve car park) and Hannaford's Wharf. There is no additional fare for this service.

› Advance bookings are advisable for all Fullers360 tours and bookable ferry services. **We recommend arriving 30 minutes prior to departure to check in.**

› All departures and timetables are subject to change or cancellation due to weather or operational requirements. Prices in this brochure are correct at time of printing and inclusive of GST, and may change without notice. All travel on Fullers360 services and tours is subject to our full terms and conditions of travel, available online at fullers.co.nz.



SAVE TIME AND BOOK ONLINE!
fullers.co.nz | 09 367 9111

*No service on Christmas day, Boxing day is a Sunday service. ¹Auckland Anniversary Day Monday 27 January, delayed departure at 4:30 pm.

Fullers 360
EXPERIENCES & CRUISES

Looking after the Food Basket

By Catherine Delahunty

The other day I was driving up to Coromandel with my grandson to visit friends in the northern Peninsula. It was a fine day and Tikapa Moana was shining. As always the water started off a muddy grey and then cleared as we travelled north away from the polluted rivers and high sediment levels of the Thames end of the Gulf. The pohutukawa were blossoming into that Christmas glory. The distant islands lay on the surface of the sea like sleeping creatures.

As we came around a bend we saw a group of at least 30 people standing out on the mud and shell flats just north of Te Mata. They were in a tight circle facing each other. I could see that this was a moment of collective intent and of karakia although I did know what the kaupapa was. There was something compelling about this group and their focus.

We are used to seeing people gathering shellfish, launching boats, throwing fishing lines off rocks and taking photos. Sometimes that piece of coastline is adorned with orca hunting or dolphins playing.

But it was a privilege to see what looked like the kaitiaki of the coast upholding their authority to protect the coast.

Later that night I saw on Facebook that Ngati Tamatera had established a rahui tapu, no shellfishing gathering from Waipatukahu (near Tapu) to Otaki creek north of Te Mata, for the next 6 months.

Rahui is not a new practice. The commitment to sustaining the resources of the Gulf food basket is a smart technology as well as a historically effective one. It is recognised by the Ministry of Primary Industry whose own practices are yet to effectively protect the shellfish and fish resources of this country.

Rahui, according to my limited understanding as someone from another culture, is a temporary restorative measure. It is not a Marine Reserve and is not permanent. Cultures who depend on the marine foodbasket want to sustain it and therefore protection mechanisms are laid down when resources need it.

We need to understand and respect these measures and explain them to visitors. Our area is subject to huge influxes of people who want to catch fish or gather shellfish without understanding the strain on the natural resources. We all want to continue to eat these foods and feed families but without time-out rules under the guidance of the tangata whenua, we all lose.

I really hope that people will respect the rahui and take the opportunity to think about what living on a finite planet with precious finite natural resources actually means. The absurd focus on individuals having what they want in the short term, and in making profits at the expense of a generous natural abundance, has resulted in the collapse and near collapse of so many species and habitats.

If in six months time the shellfish on the coast are in better shape, shellfish gathering might be allowed again, but given the rampant greed we have allowed, it may take longer. I personally have faith in Ngati Tamatera acting in all of our best interests for the long term.

Have a great summer and read the signs on our coast, they are in your interests.

Coromandel Town Seafood Fest

2 May 9.30am-4pm in Coromandel Area School grounds.

A family fun day out showcasing the best seafood that the Coromandel has to offer. Food stalls, cooking demonstrations and food tastings, live music, craft stalls, children's activities.

Entry by gold coin donation.

Contact
027 466 5131



Plastic-Free Coromandel Town

By Kate James

How about setting yourself a New Year's Resolution to help the planet? Here's an easy way to start. Make it your goal to ditch the "big four" single-use plastics this year.

Start by getting yourself:

- Reusable coffee cup or jam jar (takeaway cups are all plastic lined and not recyclable!)
- Reusable drink bottle
- Carry bags and produce bags
- Stainless-steel straw set (or just stop using them!)

If you're already on your way, what single-use plastic would you like to ditch this year?

Let us know if we can help.

Our team has some great initiatives we're hoping to explore this year. Contact us if you would like to join us. Find us on Facebook or contact Kate ph/text: 021 240 6442



Coromandel - New Zealand

Rail tours

At the following times until 1 May:
9.00am, 10.15am, 11.30am, 12.45pm,
2.00pm, 3.15pm, 4.30pm and 5.45pm

(please ensure that you arrive
20 mins prior to departure time)

Bookings advisable

Phone 07 866 8703 or 0800 DC RAIL

Email: bookings@dcrail.nz www.dcrail.nz

380 Driving Creek Road, Coromandel 3506



COROMANDEL MARINE ENGINEERING

MARINE ENGINEERING & OUTBOARD SERVICING

- All makes, model & inboards serviced.
- Full computer diagnostics available.
- New & second-hand outboards for sale.
- Retailers for marine products - inc batteries, oils, plugs, Saltaway products.
- Aluminium & stainless welding by Certified Welders.



Telephone
Workshop/office:
07 866 8004

Grant: 028 2580 2351
Jackson: 021 059 7542



116, The 309 Road, Coromandel - 1km from the main road.

McGregor Bay Wetlands Society – Rail crossing

By Carol Sutherland

It is with sadness that we report another banded rail death on Long Bay Rd near the McGregor Bay wetland on the 17 December. The adult banded rail was found dead on the side of the road by John Poole of Wyuna Bay when he was out walking. It was found very close to the banded rail caution sign.

The wetland is favoured by the banded rail as a suitable breeding area and a chick has been sighted. Juvenile birds rely on their parents for protection and foraging. The Wetland Society has already caught two stoats and several rats since August but continuing to lose adults to road traffic is a serious blow to the local population.

The Society would like to thank all those who slow down and look out for banded rail. (Most vital time is when the water is high in the bay as that is the time they make the crossing.) As for people who roar down the 50km/hr zone without care, it appears they do not care for walkers or banded rail. It is a nice walk down along the bay by the wetland but until passage for others besides cars is considered it's all a roll of the dice.

Above right is a still of an adult filmed in November. It was under mangroves preparing to cross the road close to the bridge that it can't go under. They scurry like a very small weka up and over the road so you might not see the detail of the colourful feathers but if you see anything running across the road, please slow down.



Banded rail

Coromandel Yesterday – 1869

By Meghan Hawkes

- A quartz reef discovered in the dividing range between Coromandel and Kennedy Bay led to a great rush of miners to the area. There was immense excitement and people were affected by “quartz on the brain.” Accommodation was in demand and Coromandel looked livelier than it had for a long time.

- One miner described ascending the Coromandel range as a crawl up about 2500 ft with the interlaced roots of trees serving as ladders and greasy wet yellow clay for footing. A dense forest of ferns and creepers was overseen by chirping birds. Emerging from the bush and climbing a small pinnacle of quartz revealed a complete view of the grand Coromandel harbour and picturesque township. From that giddy height a steamer at anchor looked like a walnut shell. A vast spread of trees flowed down to the edge of the township. To the right was the equally beautiful Kennedy Bay and harbour with a view far out to sea.

- William Pollard, sawmill owner, of Port Charles, disappeared in May after heading down the coast. He landed at Kennedy Bay, and then walked to Cabbage Bay. On his return he called at an acquaintances house but after that nothing was seen of him. Two men later found his walking stick and a large party went searching for 10 days without success. Months later a human bone was found in the Tangiaro Creek and another search organised – they succeeded in finding Pollard's bones, his watch and chain, waistcoat and hat.

A Taste of Matarangi Festival

Get ready for the eighth A Taste of Matarangi Festival to be held on **4 April**.

This home-grown local festival gives you an opportunity to enjoy a relaxed day out listening to great live music while feasting on delicious food, sampling a selection of fine wines and some of the best craft beer in the region. The all-day line-up of musicians is your sound track for fun and a relaxing day with family, catching up with friends and making new ones!

The line-up of musicians this year will bring a large range of exciting genres covering styles such as blues, jazz, funk, motown, disco and old school, indie folk, country classics to old-school rock and roll and pop, from years gone by to modern today. There will be something for everyone. Go to our website to see more on the musicians at the festival this year.

There will be activities for the whole family including, fun bouncy castles and ride on activities, face painting and airbrush tattoos for the courageous. The ever-popular Cook Off competitions are back, with both Te Rerenga school cooking and a “Mystery Box Cook Off” for the adults.

If you wish to support the festival charities this year there will be raffles, auctions and the bucket drop to donate towards chosen charities Kuaotunu Search and Rescue and the Rescue Helicopter service. Other charities will be decided depending on available funds after the festival. To find out more go to the festival website to see the music and bands, food and beverages that will be available, event news updates, the programme, Kids Zone, the Cook Off, location and getting there, history of the festival and how to be a volunteer.

Make sure you don't miss out on the best event in Matarangi – buy your tickets online now at www.atasteofmatarangi.co.nz or from Coromandel Adventures in Coromandel town.

Haiku

By Chris Wornall

on reflection-
leave the wake behind
the way will clear



Coromandel Accommodation - Super Property Managers!!

- * Airbnb Super Hosts!!
 - * Booking.com 9.3 Rating!!
 - * Bookabach Award
- Winning Holiday Homes!!



Long Term Rentals
Holiday Homes
Luxury Apartments
Cleaning & Linen

Let us handle your tenants, your online bookings, your property maintenance, your stress!

265 Kapanga Rd, Coromandel 07 8668803 0274 361729 office@accommodationcoromandel.co.nz

100% Coro Ltd

Combined Clubs Of Coromandel THE CLUB

Combined Clubs of Coromandel

The CCC is in the process of upgrading renovation of our club rooms, the Executive has been working on the project for the past year and have now received funding grants from Lotto Community Facilities Fund and Trust Waikato of \$133,500 toward the rebuild project.

The CCC is very much appreciative of the funding from both these organizations and would like to thank them very much for their funding, so we can start our project.

Bowling Club

By Cherrie Rokela

Club bowls are in full swing again on a Thursday.

Lindsay Nicholls, Dolly Welch and Dianne Burton were runners up in the Thames Valley Women's Triples Champ of Champs.

Colin Gawith, Ernie Groucott and Jason Dickison won the Thames Valley Men's Triples Champ of Champs.

Congratulations to you all ... a fine effort!

Our first open tournament of the year, sponsored by Twentyman's Funeral Services, was won by Peter Herbert, Cherrie Rokela and Vi King.

Eight of our bowlers travelled to Christchurch for the Nationals. No trophies were bought home, but a great experience playing at this level.

Our grounds and greens are looking good and playing well. A big thank you to those members who attended a recent working bee to achieve this.

Twilight Bowls resume again on **Tuesday 4 February**. This popular event is well patronised, with some very friendly rivalry and lots of fun.

Our Friday night social nights continue to be popular. Come and join us for drinks, chat and raffles from 4pm onwards.



Ernie Groucott, Jason Dickison and Colin Gawith – winners of Thames Valley Mens Champ of Champion Triples



Vi King, Pete Herbert and Cherrie Rokela - winners of Twentymans open Triples tournament

RSA News

By Pat Williams

Thrilled to hear Debbie is carrying on with the Chronicle.

Into the 2nd month of 2020 already, the town is still busy. Great for the local businesses. Thank goodness the road works were finished before the Christmas rush. Those months of chaos were a real pain.

Sadly we said farewell to our Club Patron Reg Canty. Some time back Reg was President of The Coromandel RSA for five years. He was a Life Member, at one time President of KEV and at his time of passing was KEV Patron. Three from our RSA attended Reg's funeral but Stoney our President says there were many Coromandelites present. Some time ago Reg moved to Helensville but when he was awarded the RNZRSA Gold Star he wanted the presentation to be at the Coromandel RSA and so this was arranged. Many travelled from far and wide for the occasion.

Even though Reg had moved to Helensville he and three friends from the RSA came for our Anzac Day Parade here in Coromandel. The only one he missed was last year, even so, his three friends still made the trip to be with us.

Great to report funds have been obtained from the Waikato Trust and the Lotteries so a major upgrade will be possible at the Club Rooms.

I have been trying to declutter and among my late husband's stuff I found this info: Casualties... During the 1st World War 100,444 troops left New Zealand for overseas service, of these 16,697 lost their lives and 41,317 were wounded – a staggering and appalling 58 percent casualty rate.

Proverb for the month: "If you want anything done, do it yourself". Till next time "Don't worry be happy".

Mindful Awareness Workshop: Back to Life with Grace

Hi everyone, I am offering mindfulness workshops, for koha and open to the public. I am a NZAP registered psychotherapist and mindfulness meditation teacher. My first career was as a General Practitioner in Auckland.

I am sure you will have heard of mindfulness. This is a particular way of paying attention to where our mind is, and becoming aware of what our mind is doing. We have to see the habit patterns of the mind before we can free ourselves from ways of thinking and feeling that no longer serve well. By practicing paying kind and curious attention to our bodily experience, and to the process of thinking and feeling, we can escape the "automatic pilot" habitual pitfalls and behaviour patterns that create or add to much of our suffering. Mindful awareness is gaining recognition for exploring well-being, relationships, and health issues. This is especially healing when combined with compassion.

These workshops will have some teaching, times of guided awareness, enquiry into the experience of practicing mindful attention, and some practical take home suggestions.

Sharing in a group gives the added benefit of hearing how other people's minds work and removes the pressure to get caught in "talking about" problems. We learn better together.

Anglican Church Hall, Tiki Rd, 2-4pm on every second Wednesday – so **12 & 26 February**.

These workshops are not suitable for someone in a current episode of depression, or psychotic thinking pattern.

Just come, or for bookings or enquiries: Anna Grace, mobile 021 135 7056, email annasorensen@doctors.org.uk

WE PAY TOP CASH

For any Vehicles: Dead or Alive, damaged, de-registered, mechanical problem, no WOF we buy it all.

WE PAY TOP CASH FOR ANY CARS, VANS, UTES, 4X4, TRUCKS



Conditions apply

FREE PICKUP

24/7

FREE CALL

0800 333 398

Or text 021 344 449

www.vehicleremovals.co.nz

g.a.s.

gasoline alley services

Coromandel Garage Ltd

What we offer:

- Service and repairs on all makes and models
- WOF's
- Motorcycle WOF's

- Pensioner WOF's \$40
- Call out's & tow in's
- LPG bottle swap & filling
- Car & trailer hire

BP Card Accepted

Best Value
for your money
with over 40 years of
combined experience
from our two
fully qualified
mechanics.

Coromandel Garage Ltd, 226 Wharf Rd, Coromandel. 07 866 8736

Proprietors: Darius and Hilary Visser

Animal Rescue Thames

By Alice and John Parris and Gobe

Thank mews to everyone who has supported our rescue kitties over the holiday season. The donations of food for the rescue cats is truly appreciated as we are still running status quo and on the same tight budget.

Our fundraising calendar for 2020 is fully booked although one booking we couldn't get was the Easter weekend. We had to choose before or after Easter so we are looking at the weekend before which will not be the same at all. This is the same weekend we will celebrate 20 years in rescue. We hope that it still equates to an awesome garage sale.

Over the holiday we homed nothing but have had one enquiry wanting a couple of cats. Whether they respond to our reply we will know over the next day or two. Usually with enquiries from Trademe it's few and far between and mostly it's 1% respond and adopt, so we just take that one as it is.

Newbies – our first two kittens came in found on a Coromandel road. They were a little shy but nice kittens in the 7 week age group. Both boys, one black one black white, auto purr and full of typical kitten attributes and playful antics. We had to go out that night to be in Thames at 6pm and had the issue of people coming from Coromandel who didn't want to defer there coming down with these kittens by an hour which meant my dear husband stayed at home to wait for them whilst I got into town. I went to the meeting and brought home dinner which was not how things had been planned. Sadly this is how rescue is. We forsake a great amount of time and effort for our animals and we do it solely for the love of these animals.

Our elders, some now three years old, are seeking rural/ lifestyle block loving homes. Also a grey white spayed female who is a lovely cat but very independant and shy at 14 months of age. We continue to wait for these to be rehomed at some point.

Crazy cats who sleep in completely weird places has to go to Gobe one of our long termers who chose to sleep somewhere very very cool – in the kitchen sink! It looked ridiculous, but he was incredibly happy. Tutu will come second as she is gifted for box surfing and will sit and sleep in any size box, some much smaller than her but she finds a way to sit in them, sleep in them and attack them

Wanted – cat and kitten food, mainly tinned or sachets, kitty litter, towels, and homes for our rescue kitties. Meow furr now.

All enquiries to Animal Rescue Thames, 532 Thames Coast Road, RD 5, Thames 3575



Gobe – asleep in the kitchen sink

Monday Walkers

By Irene Dunn

Happy New Year walkers – holidays have finished so now it's time to get back into our Monday walking.

Our first walk will be on **3 February**. Please meet at Woollams Ave car park (northern end) and those walking will decide where to go, as the two leaders are not available that day.

During the summer heat we will stick to the bush tracks of which there many around our patch of paradise.

You are welcome to join us each Monday, meeting at 9am at Woollams Ave car park (northern end).

For further information and to leave your email address to receive our weekly emails please phone Irene Ph 021 157 8408 or Natalie (07) 866 7518

GIVE A LITTLE SUNDAYS

\$10 PIZZA SUNDAYS

\$20 4 BOTTLES OF BEER

Heineken, Heineken 0%, Tiger, Sol, Xport Citrus, Xport 33

\$1 from every pizza is donated to a local community service.

**ALL DAY EVERY SUNDAY
DINE IN ONLY**

**STAR & GARTER
HOTEL**

Coromandel Town

CONDITIONS APPLY

**HOUSE OF TRAVEL IS VISITING
COROMANDEL TOWN**

TALK TO THE EXPERTS ABOUT YOUR
TRAVEL PLANS

**When: Thursday 13 February
Time: 10am to 3pm**

**Where: Resource Centre, Tiki House
45 Tiki Road, Coromandel Town**

BETTER TOGETHER

640 PORT ROAD | 07 865 0010 | COROMANDEL@HOT.CO.NZ

HOUSE OF TRAVEL

NEW LISTING



Te Kouma - A Treat in Te Kouma

Open plan kitchen/living, 3 bedrooms and two additional rooms to use as you please, this lovely home has all the space you've been looking for. Some water views and nicely situated for the sun. Double garage and room for the bigger boat at the front of the 1361m2 section.

For Sale

www.harcourts.co.nz/CO1906

NEW LISTING



Wyuna Bay— Call Me Now

Private 2,741sqm section with two storied spacious home, large kitchen, dining, 2 lounges, 2 bedrooms, 2 bathrooms plus Spa Pool. Just a short stroll through the garden to the adjoining stairway that leads you to the private beach, jetty and its own mooring in the harbour.

For Sale Price By Negotiation

www.harcourts.co.nz/CO1927

HOME/INCOME



Coromandel - Luxury Accom

All three Villas are fully furnished, all with air-conditioning with beautiful large open plan kitchens/dining and lounges. You could use one as your own home or operate all three villas as is. A complete furniture and sundries package comes with your purchase.

For Sale \$1,550,000 +GST (if any)

www.harcourts.co.nz/CO1913

PRIVATE



Coromandel— Two Perfect Hectares

Driveway access plus power and phone line to site, this magical spot has a generous proportion of flat land, grass platforms, beautiful bush surrounding you and an established orchard.

For Sale \$559,000

www.harcourts.co.nz/CO1904

SECTION



Coromandel—Look at that Sea View

This is a never to be repeated opportunity to own along this part of the foreshore. Nearly an acre of flat ground near to the water just 4 minutes drive from Coromandel Town. With its own title, driveway access and power and phone to the building site it's all ready for your dream home.

For Sale \$445,000

www.harcourts.co.nz/CO1922

Free Appraisals
Free Advice
Open 7 Days

Talk to us About
Getting Your Property

SOLD!

Fact: Every 10 minutes
someone buys a
property with Harcourts

COMMERCIAL



Coromandel - Town Centre

- 2150sqm section
- Zoned Commercial
- 2 Titles
- Full services to fence
- 35m of Wharf Road frontage

For Sale \$750,000 +GST (if any)

www.harcourts.co.nz/CO1916

BUSH BLOCKS



Colville—3 Titles—Buy One or All

\$839,000 for all or enquire for separate title prices.

This stunning bush and pine block is just north of Colville. Peace, privacy, hunting at your doorstep and genuinely majestic views to die for.

For Sale \$839,000+GST (if any)

www.harcourts.co.nz/CO3854

NZ's Most Trusted Real Estate Agency

2013, 2014, 2015, 2016, 2017, 2018 & 2019 (Readers Digest Annual Business Survey)



LIFESTYLE



Manaia - Live The Goodlife!

Live the dream on this 12.5-hectare old world bush clad lifestyle property. Located just 9km from Coromandel township and Te Kouma. This property is a must see, it has a whole lot more to offer, beautiful bush, sea views, and lots of possibilities...

For Sale \$699,000
www.harcourts.co.nz/CO1907

LIFESTYLE



Coromandel - Paradise Found

Set on 25 Acres of native bush on the Te Kouma Hill this is a truly special place! Beautifully presented home offering 3 double bedrooms with modern open plan living. Wood burner to keep you cosy in winter and lots of indoor outdoor flow onto expansive decks for summer living and entertaining. Breathe in your private view out to mighty Rata and Kauri. Close proximity to Coromandel Township, Te Kouma Boat Ramp and Auckland Ferry.

For Sale Price By Negotiation
www.harcourts.co.nz/MAF4598



GREENHILLS



Coromandel - Lovely Living

This Greenhill's home is ready for summer with a new lawn & vege boxes planted. The large expanse of deck lends itself to the perfect relaxing and entertaining area. There is plenty of scope to put your own stamp on this property. Motivated vendors, call to view!

For Sale \$635,000
www.harcourts.co.nz/CO1921

SEA VIEWS



Colville - Off Grid & On Point...

Captivating Colville lifestyle block, 5 mins north of Colville comprises 27.55ha of native bush and pine and a substantial 4 bedroom, 3 bathroom home. There are spectacular views of Waikawau Bay and out to Cuvier Island, wonderful peace, seclusion & privacy.

For Sale \$979,000+GST (if any)
www.harcourts.co.nz/CO3857



LIFESTYLE



The 309 Road - Close to Whitianga

This delightful 1.0577ha property is handy to Whitianga, Riverlee Early Learning Centre, on the tar seal, and private. There is a swimming hole just across the road, plenty of space on the lawn for boats, tents and camper vans, and enough land to graze a few sheep.

For Sale \$614,000
www.harcourts.co.nz/WI21464

HOME/INCOME



Coromandel - 4 Bedroom Home 4 Separate Units

Use the units for holiday accomm or for family and friends. This 4 bedroom brick & tile home with ensuite & office sits on 5,559m2 of beautifully landscaped grounds & a good sized, well fenced paddock. Internal access double garaging & extra shed. The 4 brick & tile units come with chattels intact. Everything you need to be earning income as soon as you move in.

For Sale \$1,350,000 +GST (if any)
www.harcourts.co.nz/CO1918



Caro
Sales
021 0291 5531



Raewyn
Sales
021 0201 9111



Don
Sales
022 453 2188



Anna
Sales/Office
022 584 6065

Library News

By Robynne Jones, Librarian

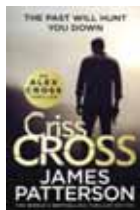
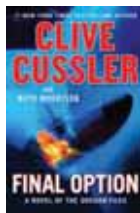
There were no new books purchased in December but we still have quite a few new titles on the shelf from last month's purchases that you may find enjoyable if you still have some time to relax and read over the holiday season. Here are a few more suggestions:

***Final Option*, by Clive Cussler**

When the CIA realises the identities of three American spies in Brazil have been compromised, they turn to Juan Cabrillo and the crew of the Oregon to rescue the agents. What seems a routine operation turns out to be a trap designed by Juan Cabrillo's greatest enemy, a man driven by hate to seek the ultimate revenge. The crew of the Oregon must piece together a series of disturbing events, including the mysterious sinking of a nuclear attack submarine and the possible discovery of a WWII-era weapon that was thought to be lost in the jungles of Brazil.

***Criss Cross*, by James Patterson**

Mere hours after witnessing the execution of a killer he helped put behind bars, Alex Cross is called to the scene of a copycat murder. A note signed "M" rests on the corpse: "You messed up big time, Dr. Cross". Was



an innocent man just put to death? As the executed convict's family launch a vicious campaign against Cross, his abilities as a detective are called into question. .

Last month I put a post on our Facebook page looking for any interest in a book reading for toddlers, say once a fortnight. We only have a few parents that come in for books to read to their toddlers, and it is a shame that this resource of young children's picture books and board books that we have isn't used much. We will continue to purchase these books as we like to encourage parents to read to their children from an early age. If parents with younger children are able to read to their toddlers, that encourages children to become readers themselves. We also don't have many older children using the library. My guess is that the school library is much better stocked than ours for the younger reader. It would be good to get the community's feedback. Pop in and let us know what you think and any suggestions you may have.

We have added a space upstairs where library members are able to sit and read the many reference books we have available, like the new addition we purchased just recently – *The Great War for New Zealand Waikato 1800-2000* by Vincent O'Malley. You're welcome to come in and have a look at our new space.

Lastly, thank you to all those who bought a Xmas raffle ticket from us. We use the funds raised to purchase more books for the Library. Our winner this year was Dianne Parkinson, congratulations Di.

Ann's Good News' Naturally

Gut health, digestion and consequences

For nearly 30 years I have been talking about, teaching, specialising and healing the gut, digestion and consequences of poor gut health, poor digestion and the consequent disease(s).

It seems curious that recently the gut has become "trendy".

A "fad" has been created from something that is simply natural and common sense. For thousands of years, people have simply experienced optimised physical and mental health via real food, a functional digestive tract, good gut bugs, and good poos. With this experience, there is a realisation.

Words like "Gut health", "gut immunity", "microbiome", "good bugs" etc are recently in vogue. The words "Good bugs" is even seen on Kellogg's cornflake packets, despite cornflakes being over processed dead food, with no nutritional health value.

TV Programmes like "The Good Sh-t", "The Doctors", "Embarrassing Bodies – Dr Christian Jessen", "Dr Oz" etc., are all focusing on what is deemed as a "new discovery". It is great to see them advising to smother a new-born baby, delivered by C



section, all over and into her mouth, nose, ears, with the vaginal "good bugs", to wake up and inoculate the baby's white blood cells (its immune system). We know the good bugs at birth are a natural immunisation.

Many thanks to Dr Libby Weaver for her wonderful writing of the same, and more. Her books are saying what I have been teaching for years.

Many diseases are influenced by your gut health and the microbiome.

So I am so proud to have been saving lives for all these years, sharing my innate knowledge with you all. What I have learnt through many decades of clinical experience, and also what I gained from my ongoing education at University, Naturopathic College and each year doing seminars and webinars keeping up with the latest research in the field of preventative and natural medicine.

Keep it simple – eat whole food, a well-balanced diet, to provide the gut fibre or PREbiotics to feed the PRO biotics – good bugs, thus prevent disease or the need for drugs or surgery.

More good news:

- Irritable Bowel, Insomnia, Low Mood and Energy, 29 year-old woman: After placement on a nutritional programme and changes in her diet, all symptoms had improved and she is enjoying long formed,

normal, sweet smelling stools.

- Skinny fat child – chubby tummy, picky eater, sluggish digestion, behavioural issues: This 8 year old boy is a delight now that he has woken up his taste buds and loves his vegetables, is able to have a bowel motion daily and realises his boundaries. A happy family.

- Diverticulitis/IBS, sinusitis, spotty itchy skin, headaches: This 60 year-old woman really appreciated her dietary advice and nutritional programme. Impacted faecal matter and malabsorption created infection, toxicity, leading to skin and headache issues. All great now.

- High Blood Pressure: A 59 year-old lady's blood pressure went from 150/90 to 123/78 within one month of starting her programme. She also lost 6 kgs.

- Hot Flushes /Night Sweats: A 45 year-old lady's menopausal symptoms all disappeared in just 3 days, after being on her Nutritional Programme. She now has more energy and is sleeping well

- Failure to Thrive, Poor Sleep: This 16 month-old boy had a bad start to life and had to be on a lot of medication, which created other health issues. He is now on track with his sleep routine and is eating well. His mother is so relieved, as is the doctor and Plunket Nurse.

Contact Ann Kerr-Bell 021 046 1647



SCOTT REVELL

BUILDING CONTRACTOR



- New Homes
- Renovations
- Additions \ Repairs
- Bathrooms
- Decks \ Fences \ Landscaping

Prompt Professional Service
srevell2010@hotmail.co.nz
027 861 6592
COROMANDEL

Natural Medical Centre

The natural alternative for all your health requirements

At Tiki House,
Coromandel.

For appointments,
phone or text: 021 046 1647
or email: annk-b@ps.gen.nz
www.naturalmedicalcentre.co.nz

Ann Kerr-Bell

B.Hlth.Sc. (Comp.Med.)
Adv.Dip.Naturopathy
Adv.Dip.Med.Herb. MNZAMH
Naturopath
Medical Herbalist
Nutritionist
Massage Therapist

Coromandel Budget Advisory Service

By Caroline Dunn

Budget Advice

Hi all, hopefully everybody's year has started off well. It is mid-January as I write this and we are wrapping up our first week back in the office. We have hit the ground with our feet running and are looking forward to the year ahead.

A new year is always a good time to make a budget or relook over your current budget. Whether it is a new budget or one you currently use, budgets are a living document and continually change as our life changes (new bills, bills paid, savings goal, unexpected bills etc), so it's important to keep track of where our money is going. Is it benefiting our situation, and what can we do to be better/smarter with our money.

If you want help with working on a budget, getting debt under control or have any other financial issues please pop in to our office at Tiki House – we're here to help. It is free and totally confidential.

To make an appointment come and see us at our office in Tiki House, located opposite the BP or call us on (07) 866 8351.

Foodbank

Food parcel requests need to be in at the Budget Office by 12.30pm on Tuesday. Food parcels must be collected at 2.30pm on Wednesday. Please remember to bring your own bags/boxes if you are collecting a food parcel.

If you think you will require more than one parcel, please book in with one of our Budgeting Mentors to see how they can assist you also.

Please keep donating any food items and excess garden produce. All clean, resealable jars and containers and reusable bags are also gratefully accepted by us on our mission to become single-use plastic free this year.

Community Garden

The Community Garden is desperately looking for regular volunteers this year.

It's hard to keep up with the amount of planting, weeding and harvesting required to keep the garden in top shape and producing for Coromandel Foodbank and the local community. It doesn't matter what your skills or experience are, there is something needing to be done that will suit you – mowing, weeding, harvesting, pruning, mulching, compost-building, etc. You might even be able to learn a new skill or two! Please drop in to the Community Garden located behind the dairy on Glover Street, give Brooke a call at the Budget Office, or send a message via our Coromandel Community Garden Facebook page if you are keen on sharing your time and energy.

Mana Update

By Jade Ferrière

We often hear that it's important to speak our truth – to express our honest feelings, thoughts, and perceptions. But how often do these good intentions create rifts in our relationships? We want to be true to ourselves and live with authenticity and integrity. We don't want to be codependent and conceal our true feelings in order to protect or appease others. Intimacy cannot thrive in an environment of emotional dishonesty and inauthenticity.

Speaking our truth can be refreshingly empowering. It's a relief to speak our mind without feeling overly responsible for others. But we cross into a danger zone when our self-expression becomes so dominant it cuts us off from how we're affecting others.

As we gain more experience in knowing and expressing our personal feelings and views, we can learn to do so in a way that creates space for others to do the same. We can develop the skill of going inside ourselves, noticing genuine feelings, and pausing long enough to consider whether it feels right to say something – and then most importantly, how to say it.

It takes practice and these are a few of the things we find help us, here at Mana.

Be Empathetic – when we speak our minds we don't have to tear others down. Even when we have an opinion we want to share, we can still choose to see another person's point of view. Our empathy not only helps us to hear others, but it also helps others to hear us.

Stay Calm – it is not what we say but how we say it. Speak with great intention, even though there is a chance that others won't like what we have to say. That is OK. Instead of getting defensive, let the other person present their side of the situation. There's real power in being the calmest voice.

Don't Wait – there is a tendency to hold ourselves back for fear of saying something silly or wrong. In those situations, it is likely that what we need to say is not just for us. Pause long enough to decide if it feels right to say something and then trust the instinct that is guiding you to speak.

Be Concise – it can be easy to talk extensively about something – out of nerves or wanting to explain our reasoning in-depth – and we can often end up saying too much. We don't need to fill the air with endless chatter, simply speak what is important, then stop and listen.

We mustn't withhold speaking our truth for fear it will upset others. When the truth is spoken from the heart and not the egoic mind, it invites an opportunity for it to be heard from the same place. Nevertheless, how others receive us is not within our control. We can only communicate from the heart and allow our words to come forth from a place of love.

When we show up authentic, we create the space for others to do the same.



Whitianga Office: 21 Coghill Street
Andy 022 594 5958
whitianga@gdcgroup.co.nz

Thames Office: 516 Pollen Street
Tom 021 246 4673
thames@gdcgroup.co.nz
www.gdcgroup.co.nz

GEOTECHNICAL | CIVIL | STRUCTURAL | ENVIRONMENTAL | ARCHITECTURE | ENGINEERS

GDC Consultants offers you a wide range of services within the following areas:

- ✓ Earthquake assessments
- ✓ Structural Engineering
- ✓ Geotechnical Assessments
- ✓ Subdivision Engineering
- ✓ Architectural Design
- ✓ Stormwater/ Wastewater design and modeling
- ✓ Bridge Design
- ✓ Traffic/ Safety Assessments
- ✓ Road Pavement Design

**We are your local
Coromandel Peninsula
Engineers!**



retreats
workshops
events

Mana Retreat Centre, Coromandel New Zealand

Book Online - manaretreat.com

1-15 FEB	Brightpath Retreat w/ Jaya and Manyu Ishaya
16-26 FEB	An Introduction to the Alchemy of Transformation
27- 2 MAR	Reiki Retreat w/ Uli Brell
5-8 MAR	Mindful Breathing Teacher Training w/ Bodhi Whitaker and Kat Tucker
11- 14 MAR	Advanced Regeneration Secrets w/ Judy Satori
15-18 MAR	Physical Regeneration - Level III w/ Judy Satori

Heartbeat – St John

By Teri and Neil

Welcome to 2020. December saw an increase in jobs, with 16 ACC and 27 medical jobs attended. We utilised helicopter transport on three occasions. Seven of these responses were single crewed so thanks to our volunteers for their contribution to making sure we are double crewed as much as possible.

Several of the jobs involved pedestrians being hit by vehicles both on the road and in a carpark, so it is a timely reminder to take care especially around schools once they start back in a few weeks. Fortunately the injuries weren't too severe but required recovery periods for the people involved.

Congratulations

Congratulations to Aranee in obtaining her three year service award.

James and Abby have started their training towards the next step from First Responders to becoming Emergency Medical Technicians. This involves study and classroom time plus practical experience, and takes around twelve to eighteen months to complete. Several others in the team will be commencing their course shortly. A great effort to be able to provide increased skills to the community.

Training

Training is commencing again on **25 February** between 6pm and 9pm so if anyone is interested in seeing what we do, please come and have a talk to the team. If anyone is interested in joining our small but dedicated team, just a reminder we are having an Assessment Day in Thames on **21 February**.

Take care and enjoy the sunshine while it lasts.

**Museum News**

By Raewyn McKinney

With schools resuming after the summer holidays it seemed a good time to consider some school memories.

Dulcie Pepper (née Strongman)

Dulcie attended Coromandel Public School, now known as Hauraki House. She started school some weeks before her 5th birthday, at the same time as her older brother, who was five. Her school days continued until 1945, when she left at the age of 14 to go and work at the Farmers Trading Company, on the corner of Kapanga Road and Tiki Road. During her school years the school had a staff of four plus the school principal; the primers had one teacher, as did Standard 1 & 2, also Standard 3 & 4. The principal taught Standard 5 & 6 (Form 1 & 2) and assisted with the High School who had one teacher for Forms 3, 4 & 5.

Weather permitting, the school day started with "drill"; daily exercises held outside on the school yard. Following that, lessons were held in mathematics, English, Nature Study, Social Studies and Home Science. Shorthand/Typing, Chemistry and Latin were some of the subjects offered for senior students. So, although the school was small with few staff members, a full range of skills was offered to the students. However, some subjects that sound familiar to modern ears, were quite challenging to teach during a time without electricity. Without electricity there were no sewing machines, so the girls were taught Home Science to sew with needle and thread and became proficient enough to make basic clothes for themselves, and later on their families. Cooking was another subject that was quite different with no electricity. Meals at home were cooked on coal ranges, but the school did not provide these for the use of the students, so cooking instruction was done with the use of books, and food nutrition basics were passed on. Some of these skills would have involved the use of home garden produce, and the school did have a garden where the boys were able to perfect their talents.

At the time there was no school uniform; students wore what they had, which was usually a gym frock for the girls and shorts for boys. School blouses came in one colour, white, so there is a semblance of a uniform when looking at old school photos. Some of the older girls utilized their home science embroidery skills by designing their own school crest and embroidering school blazer pockets.

School sports were another area of school life that has changed markedly. At the time Dulcie attended school there was no school swimming pool. Instead, students walked to the wharf for swimming lessons; smaller children swam nearer the shore and the bigger ones on the deeper side. Later, High School students were able to go swimming at Long Bay, which was opened up as a town domain. As well as swimming, and daily drill, sports consisted of football (rugby), basketball (9 a side netball) and long ball. Skipping and marbles were other popular pastimes in the school yard. Each year the whole school went for a picnic, sometimes to the corner of the 309 Road, where popular activities such as egg and spoon, and 3 legged races were held. School outings usually involved walking as cars were a rarity. Children came to school on foot, by bicycle or on horseback, and a paddock was provided for the horses during the school day.

During February the museum is open from 1pm to 4pm every day and from 9.30am to 1pm on Thursdays

**Coromandel QUARRY & Contracting Ltd**

- All grades of metal delivered
- Driveways, roading, earthworks

Telephone 07 866 8306

email: richard@cqc.co.nz www.cqc.co.nz

Purnell

LAWYERS

BRENDA FLAY, SOLICITOR:

Travels to Coromandel on Tuesdays.

Please phone the Thames Office (868 8680) for appointments.

PARTNERS: Hayley Green and Brenda Flay

THAMES OFFICE: 611 Mackay Street, P.O. Box 31, Thames

PHONE: 868 8680 **EMAIL:** info@purnell.nz

COROMANDEL OFFICE: Tiki House, Tiki Road

OUR SERVICES

ESTATE PLANNING / PROPERTY / COMMERCIAL

www.purnell.nz

THAMES

WHITIANGA

COROMANDEL

SOLAR ENERGY SPECIALIST

Grid Connected & OFF GRID Energy Systems

FULL SUPPORT & SERVICE - Coromandel Peninsula

GOOD ENERGY

SOLAR ENERGY SOLUTIONS
DESIGN, INSTALLATION & SERVICE

www.goodenergy.co.nz

Email: info@goodenergy.co.nz

Sales 021 606 835 - Technician 021 242 3394



Reasons why our Coromandel bus matters

By Lizzie Kershaw



In this article I'm focusing on the bigger picture and the reasons why public transport has a significant part to play in this era of escalating population and environmental chaos.

So far in NZ we haven't experienced the extreme weather events that are occurring worldwide which we regularly witness on the news and which doesn't mean we won't in the future.

It is time to make an effort to decrease our toxic emissions.

Many people believe that the goal in life is an endless drive to make money, and that our leaders should focus on increasing GDP (gross domestic product). This creates an "economic polarity" where some are very rich and others struggle to pay bills and feed their families.

GDP reflects how well the country is financially but it's not an accurate reflection of people's happiness. Happiness is significant, resulting in people feeling content, wanting to work, not needing to steal etc. so well-being increases and everybody wins.

Today in New Zealand, not everyone can own a car (for varying reasons) and many choose to travel on public transport which obviously isn't a choice for those who live in Coromandel at the moment.

Furthermore, our government has declared a climate emergency and has pledged to reduce carbon emissions.

Our road to Thames is chock-a-block with vehicles – huge trucks and giant camper vans as well as cars, boats and cyclists too.

To increase safety and to create a better world for everyone, we need public transport to:

- allow tourists to travel on the Peninsula, and come and go to the airport without renting a car, especially as many have never driven on the left side of the road before!
- ease congestion because if a bus can take about 40 people that could reduce the number of cars by up to 40
- according to the NZ Ministry of Transport and NZ travel household travel survey 2007-2011, car drivers are 9 times more likely to be injured in a crash than bus passengers, so the bus is safer
- the air and noise pollution from traffic is a problem too and that can affect people's sleep patterns and impair thinking ability. Nitrous dioxide, carbon monoxide and other gases are associated with acute respiratory effects such as asthma – especially in children
- a local bus would be more fuel efficient per passenger mile
- free up time whilst travelling to read, study, work, enjoy the view (which is fantastic) rest or socialise
- travelling by bus results in improved health as it requires walking to move around and strength to carry your purchases etc. (without a car to put them in). A pull along bag with wheels solves this problem and is good exercise which strengthens well-being
- affordable public transport in and out of Coromandel would allow tourists and locals to travel on Coromandel Adventures buses or rent e-bikes to "see the sights" and create taxi jobs to run people around locally
- even if you're a motorist who wants to drive everywhere and has no intention of taking the bus, you too will gain from public transport because it'll mean less traffic on the road.

COROMANDEL PLUMBING

(1986) LTD

1490 Tiki Road, Coromandel

CRAIG DUDSON

Phone/Fax 866 8814
027 482 1291



Plumbing, Drainlaying and Gasfitting



Mō tātou o Hauraki
Affordable medical & wellness
services for everyone in our community

Te Korowai Hauora o Hauraki Coromandel Whānau Health Centre

Clinic Fees

GP

Under 18s - **FREE***
18-64 years - \$18.00
65 + years - \$12.00

NP

Under 18s - **FREE***
18-64 years - \$18.00
65 + years - \$12.00

FREE*

Under-25s sexual
health checks

NURSE

Under 18s - **FREE**
18 + years - \$12.00

*clinic fees for enrolled patients

OPEN: Mon - Fri:

8.30am - 5pm

Waitangi Day Thurs, Feb 6

*Te Korowai Hauora o Hauraki
Whānau Health Centre is closed
on Waitangi Day.*

Rongoā Clinics

with Jo Shelford

Feb 20; Mar 5, 19
Jo is away all April



Foot Clinics

with Ruth Wells

Feb 27; Mar 19



225 Kapanga Road, Coromandel 3506
Ph (inc a/h): 07 866 8084
Email: coromandel@korowai.co.nz
www.korowai.co.nz

Coromandel Community Christmas Lunch

By Christine Waddell

"Twas the night before Christmas, when all through the house, not a creature was stirring, not even a mouse." Except at the Coromandel Clubrooms, where things were just a flurry of activity! Balloons to be inflated, garlands to be hung, vegetables to be peeled, meat to be cooked, cream to be whipped ...

Thankfully the key word in the Coromandel Community Christmas Lunch is community! The community of Coromandel did itself proud with people volunteering their time, food, money, gifts, company and laughter!

It was a privilege and joy to be involved in the Christmas Lunch for the second year running. From an incredible idea from Rita Stephenson and Damian Langley, to a fantastic event hosting nearly 60 people! Coromandel Town should be proud!

The theme this year was Winter Wonderland, and Lyn Williams did not disappoint with the white and gold theme. Guests were in awe of the twinkling white tree covered in glittering decorations, and the gorgeous table settings with candles and gold décor. How wonderful that this year, because of many generous donations, we were able to offer each and every guest a gift to choose from – as well as the volunteers.



Unfortunately our Santa had an incident with a reindeer prior to the day, but we were lucky enough to replace him with one of his helpers who turned out to be a Naughty Elf which only added to the fun! (Thanks Chris!)

Volunteers were all ages, and from all walks of life. It was wonderful to see some of our fantastic young teachers from the local school there to help! We had some volunteers that peeled and cooked vegetables, wrapped gifts, made and wrapped the beautiful shortbread, welcomed our guests, set tables, cut cakes, poured drinks, cleared plates, packed leftovers, did dishes. It made things so easy. Thank you also to our helpers for sacrificing your time with your own family, to join the wider community family.

Our guests this year were a variety of community locals. We had some that returned from last year (great endorsement!), some new faces, and best of all we welcomed a few families. The noise level in the Clubrooms was a joy – laughter, animated chatter and friendly banter – just what Christmas Day should be!

Thank you to each and everyone of you who contributed in some way to the special day. The donations of food items, money, gifts and time are what makes this day such a success. Sadly I will not be living here for next year's Community Lunch – but it has been the utmost honour and joy to have been involved.



The decorated hall



Naughty Elf

MICHAEL BREWERTON ARCHITECT.

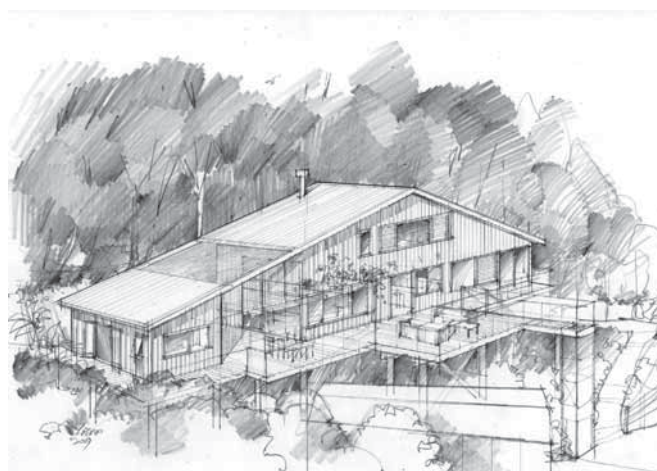
Michael Brewerton

ANZIA, BArch, NZCAD

021 360 477

mbrewerton@xtra.co.nz

michaelbrewerton.co.nz



TEL: 021 360 477

Santa Parade

Santa parade followed by Christmas in the Park was a wonderful day had by all. Santa resplendent in his wonderful suit waved to everyone as he rode in the Fire Brigade vintage fire engine from Te Tiki Street down through town to the school bottom field. Santa then took more time to pass out ice blocks to the many children that had waited to see him, some of them making the most of the opportunity and having a photo taken with him. Thank you so much Santa for making time to visit from the North Pole.

It was awesome to have so many fantastic floats this year. It was evident that a lot of work had gone into them all. Well done everyone. We hope you can make the commitment to having a float again this December.

The committee would like to say a massive big thank you to all the businesses that donated prizes, all the stall holders at the Christmas in the Park, to all the children who entered the colouring competition, the gorgeous choir singers, to Gemma Loudon for singing, Ukemania band for supplying the gear and also singing, Kiwican for putting on the Santa run and Coromandel Fire Brigade for keeping everyone nice and cool. Also thank you to Coromandel Area School for allowing this to happen on school grounds. We do hope you all come back for the next parade and festival on **5 December 2020**.

COROMANDEL TOWING

24 HOUR TOWING

unlocks, jump starts, fuel, salvage and breakdowns

corotowing@gmail.com

Call Ian 027 275 8468

OUR COROMANDEL



News from Thames-Coromandel District Council

February 2020

Final touches to Coromandel Town main street upgrade to be completed before Easter

The cobblestones for the roundabout will be laid before Easter, in conjunction with some other minor finishing touches to the main street, including gardens and landscaping.

An information session will be held with stakeholders in February to discuss final works to be done. The date is yet to be decided, but it will be published on our project page tcdc.govt.nz/coromandel-town-upgrade. You can also email our Council's



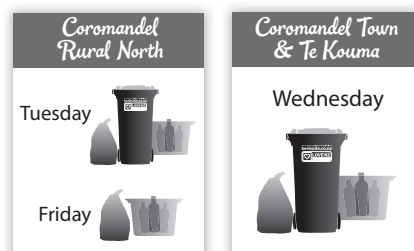
New roundabout at the Tiki Rd, Kapanga Rd, and Wharf Rd intersection.

Community Manager for Coromandel Town, Margaret Harrison, for more information: margaret.harrison@tcdc.govt.nz or 07 868 0200.

Summer water use

As dry weather is forecast into February and as the summer visitor season continues we may need more restrictions on water use as supplies continue to come under pressure. Water restrictions are shared daily on local radio stations, our Council's Facebook page and the home page of our website. Please use water responsibly. tcdc.govt.nz/water

Kerbside Summer Collection



Coromandel Rural North's rubbish and glass collection will be one day later after the Waitangi Day public holiday. The non-summer Kerbside schedule begins on 10 February.

tcdc.govt.nz/kerbside

If you leave town before your collection day, you can drop off your blue rubbish bags and recycling for free at your nearest Refuse Transfer Station (RTS). Hours and locations:

tcdc.govt.nz/rtts

DOGS

Please remember most of our beaches have summer restrictions for dogs, which may be banned completely or only allowed on the beach before 9am and after 6pm. This is not only to keep dogs off beaches when they're crowded with people, but to protect important bird habitats during their summer breeding time. tcdc.govt.nz/dogs



Coromandel-Colville Community Board
UPDATE

The next Board meeting will be on 25 February at the Coromandel Service Centre, 355 Kapanga Road. tcdc.govt.nz/meetings

Coromandel 200

(200 Years of Coromandel)



Call for volunteers to help with Coro 200 Illume Festival

From May 29-31 2020, the commemoration of the 200th anniversary of the visit of the Royal Navy Ship "Coromandel," for which the town and our peninsula are named, will combine with the Illume Festival in Coromandel Town.



Organisers are still looking for volunteers for a variety of roles and all help is appreciated. There will be general preparation and setting up duties on the day for stall holders to set up and sell their goods.

The dedication for the HMS Coromandel will be at 11am Saturday 30 May at the Whangarahi Reserve. There will be a fireworks display, art exhibitions, a themed ball, food stalls, live acts and fun activities for the kids throughout the main town and a commemorative planting at the Albert Street Reserve.

If you are interested in becoming a volunteer or setting up a stall contact Daniel Smith at illume.coromandel@gmail.com

FIRE BAN



Fire and Emergency New Zealand (FENZ) has declared a Prohibited Fire Season, which means a total fire ban across the Coromandel. If you see an out-of-control fire phone 111. checkitsalright.nz



Get our free eNewsletters!
www.tcdc.govt.nz/subscribe



www.facebook.com/ThamesCoromandelDistrictCouncil

www.coromandel.govt.nz

customer.services@tcdc.govt.nz
Private Bag, 515 Mackay St, Thames
Phone: 07 868 0200

Rangatahi

CELEBRATING OUR CHILDREN

Sir Edmund Hillary Outdoor Pursuit Centre in Turangi



Every year the Spirit of Coromandel Trust cover all costs for four youths to go to the Sir Edmund Hillary Outdoor Pursuit Centre in Turangi.

Here is Jasmine's account of her trip.

Holiday Action Challenge

– by Jasmine Smith

The experience I had there was amazing! I really loved it. A bit colder than up here in the Coromandel though. We did many activities and confidence building skills. The staff and teachers were very nice, funny and always make sure you are safe and happy, they didn't force you to do the activities if you couldn't do it which was nice, they encouraged you to do it if you believed you couldn't.

Sunday

The first day we got there we just got used to where everything is, what the Hillary Outdoors was about, some of its history and what groups we were in. The view from the deck in the youth centre was amazing! It was my first time seeing real snow on the mountains.

Monday

I got to know the girls that were in the same chalet as me a little better and the boys that were in the one next to us. We had breakfast and got straight into doing the activities in our groups. I was in group 2 with Brodie, Reta and some others from parts of the North Island.

First we went for a hike up a river. The water was freezing but I didn't mind. Simon, our group instructor, taught us what we can eat in the bush and what we can't. We did a little bit of rock climbing where the water used to flow off an old waterfall. Rock climbing was my most challenging activity to do, but I got there in the end.

After that we did abseiling down a man-made rock wall. It was only 10 metres high but I still got a little scared when I was going off the edge.

Tuesday

We went on the high ropes on the giants ladder. It was scary at first but I quite liked it. It was a great team building and trust exercise. After that we went kayaking down the dam by the bridges. Simon taught us how to go through rapids and where it was easier to paddle into them. We did a few games and most of my group fell into the water which they said was freezing cold. We did a bridge jump once we finished kayaking but I couldn't do it.

On that night for dinner we had pork belly and oh my gosh, it was the best pork belly I have ever had in my life! 11/10!

Wednesday

We had to pack up for an outdoor overnight at Marty's. We drove to the spot to drop off the food and carried on driving and parked by a massive cliff which we were going to abseil off. It was so high up, I got so terrified that I



Jasmine (pictured front), with Reta, Brooke and Brodie

didn't end up doing it. Now when I look back I wish that I did do it.

After that we went caving and I love caving! Everyone else was scared and some had panic attacks, but not me, I felt like I was at home. Near the entrance there were some cave wetas. There was a river that went in the cave too, and a big line of glow worms were hanging above the river. Everyone was not sure about the parts that you had to get on your stomach and crawl through but I enjoyed it and had no problem.

After that we had to walk back to our campsite. We got to Marty's, and oh my gosh it looked so beautiful! There were so many trees covered in many different types of mosses and other plant life. The ground was

covered in mosses and ferns, some I have never seen before. The tent had two open sides but we all slept together. I was terrified of sleeping in open tents. I was afraid that someone or something would come along and take me and I was afraid that rats would decide to jump all over us. My group was very kind and allowed me to sleep in the middle somewhere which made me feel a little better.

Thursday

I barely had any sleep. We packed up and because the next day we had to hike all the way back to the Hillary Centre which takes 5-6 hours! I was exhausted when we got back but it was so worth it! After we recovered for a bit we went back to the high ropes and did the leap of faith. The pole we had to climb up was so high and was quite hard to stand on the very top. It took me like 10 minutes to jump off and to try and grab the beam which was way too far away for me. It wasn't as bad as I thought it was going to be when I jumped though.

Friday

We packed up our bags ready to go home. We did one more activity before we left which was zip lining across the indoor pool. We got taught how to tie it up and to get it ready properly. Then we did a few races across them.

We each got a certificate that says we completed the holiday action challenge. I met some really nice people who I enjoyed hanging out with.

Over all I really had fun there and I would love to do it again.

Thank you for this awesome opportunity that you have given me, I will never forget it!

Coromandel Area School

By Jamie Leckie

By the time you start reading this Term 1 will have already kicked off! It is looking to be full of sports, camps, swimming, day trips, and activities to keep our tamariki busy!

Welcome back everyone! As we start the year, we would like to give a big warm welcome to our new staff, students and families. The teachers have been working hard to organise exciting learning programmes for this year. We hope you have all had a relaxing holiday and are ready for 2020.

Keltic Fair

A massive thank you to everyone who was a part of the Keltic Fair organising committee and the helpers. Lots of time and effort goes into organising this event and it does not go by unnoticed, so well done team. This event is New Zealand's largest one day fair, and it brings in great revenue for not only our school, but for our community too. Thank you again for organising a successful day which was enjoyed by all.

Other information

First day back for the whole school: **Friday 31 January.**

Primary school camp Year 1-6 at Tucks Bay: **13 and 14 February.**

All enrolment and 2020 information including stationery lists and uniform lists can be found on our school website, just search "Coromandel Area School".

Communication

We endeavour to communicate as effectively and efficiently as possible in regard to all school matters. Please ensure you read all newsletters, notes home and check the website regularly to keep up to date with any information you may need to know. Please also check our official Facebook page. The name of the page is Coromandel Area School, so please "like" and "follow" us on the page to get instant and up to date information, photographs and updates on school achievements.

Bring on term 1!

COROMANDEL AREA SCHOOL



Kiwican

Welcome back to Term 1, 2020.

Here are a couple of photos of our time at this years National Training. We have a couple of new leaders joining us this year. I would like to welcome both Daina and Kana to our awesome team.

The Kiwi Can team are all pumped to get back into the classes with our tamariki.

Check back next month and find out what our Theme and Catchphrase is for Term 1.

The Coromandel Kiwi Can programme is managed by the Coromandel Independent Living Trust, officially sponsored by Sanford Ltd and supported by The Lion Foundation, CSSC (Colville Social Service Collective), Trust Waikato



Coromandel Youth Group at Hauraki House

(Closed 6 February for Waitangi Day)

School Term Time Hours

Tuesday, Thursday and Friday – 3-5pm.

Friday Night Social 6.30-8.30pm for students school yrs 6-9.

Sunday – 1-4pm.

Coromandel

Youth Group is for all children aged 5-15yrs. Socialise, hangout, play and do freestyle arts and crafts. Parents just fill out a membership form for each child attending.

Please make a gold coin donation for after school sessions.

Parents/Guardians: please feel free to phone with child's expected time of arrival and departure as we can not take responsibility for children who don't sign in or for those who sign out early.

For more information call in or phone (07) 866 7061.

Along with the kind donations received, we would like to thank those that make this programme possible: Lottery Waikato, COGS, Trust Waikato, "Bizarre" Charitable Trust, D.V.Bryant Trust

Colville School

By Tui McMillan, Principal

At the close of 2019 we farewelled eight students from Year 8. We held a fantastic graduation celebration with families at Tangiaro Kiwi Retreat. Every one of the graduating "class of 2019" gave a speech to acknowledge their personal journey in education. We enjoyed a buffet dinner with a menu designed by the students. There was a photo board of the students from when they were babies up to the present day and this was an awesome subject of conversation during the evening.

Here we are at the start of a new decade. What will 2020 bring for Colville School?

Once again we have twelve Year 7 & 8 students making up our senior school. The New Entrant / Year 1 roll has grown and 10 students currently make up our junior school (Year 1-3) with several new entrants to start over the year.

This year will see us continue to develop our local curriculum and work on learning adventures in maths and science. We are fortunate to have a Waikato University Science advisor working with us over the year. We will continue to focus on local "land to sea" environmental issues and further our knowledge of local history by exploring the stories of settlement by early Maori and others in the rural north over the past 300 years. Kahu Class will be working on a marine theme in Term 1. We have Sea Week and further work with Colville Harbour Care and Otago University on the Marine Metre Squared (MM2) project to collect data to monitor the biodiversity of the Colville Harbour.



The class will also travel to Hahei to enjoy snorkeling in the marine reserve there.

Kiwi Can continues to support our values of Effort, Service and Manners with their lessons every Friday. We are very proud of our students. They show they care for each other and for their community which is of fundamental importance to success in the world.

The Colville Easter Arts Festival is an exciting event for Colville. Our children will participate in the festival with music, art and dance that reflects the "country" theme. In Term 2 we have a focus on the voyage of the HMS Coromandel ship that visited our shores 200 years ago and after which our Peninsula and Coromandel town is named.

In response to our community health survey we will host the Life Education caravan for specialist lessons about maintaining our well-being and also St Johns to extend learning and first aid skills that we started in 2018. We also look forward to a NZ author visiting us in March. Participation in the Amazing Race in Hamilton is a big event for us in October – all the more exciting for us to return this year as winners of last year's event.

We welcome some new families to Colville School this year. Thank you to the community for your continued support for our unique little school nestled here in the Colville valley. Our Board of Trustees and Staff are committed to student and staff enjoyment and wellness and to the high achievement of our students in all areas of the curriculum.

Visit our Colville School Facebook page and our new website www.colville.school.nz for more information

Papa Aroha
Engineering
Est. 1980

**Servicing Small Engines:
 Ride-on Mowers
 Quad bikes**



MIKE McCALL • 07 866 8469 • 027 223 7919
Email mikepapeng@gmail.com

Himalaya shop : Colville

Hi Everyone ,the Himalaya shop in Colville will be open 7 days a week throughout February month.
 Our opening hours will now be 10 a.m. till around 4p.m.
 We still have a great selection of summer clothes and gifts
 Take a drive up the coast and come in and browse.
 Contact: SHOP 8667 224,home 8666 865
 Anette mobile 021 139 7838 email robnnet@yahoo.com
www.facebook.com/roah.co.nz

Arts

Double vision

This exhibition was conceived round the dinner table during a very convivial meal when the challenge was posed to have a joint exhibition in which two artists explore their responses to the same subjects, hence the title "Double Vision".

Diann Cade qualified in Wellington in Architecture and Industrial Design and then worked in graphics and commercial interior design. She moved to Coromandel in 2003 and since then has painted in acrylic, interpreting the light, bush, landscape and the people that surround her.

Jan Linklater's initial career was as a research scientist with Shell but in later life she went to a UK art school and studied Fine Art. In 2011 she joined her family emigrating from the UK to NZ and lived firstly on the coast near Gisborne.

Two years ago she moved permanently to Coromandel, attracted by the softer ambience and stimulating company of fellow artists.

Both artists have exhibited widely and have sold works internationally as well as to locals.

Diann and Jan are good friends who have always critiqued each other's paintings along the way; their contrasting styles and palettes make for an interesting juxtaposition of works based on common themes which leave plenty of scope for differing interpretations

The ten subjects are:

- Still life to include the work of another artist
- Portrait of the other
- Two people in a garden
- People interacting with their world and each other: interior
- People interacting with their world and each other: exterior
- A masterpiece interpretation: Titian's Death of Acteon
- A specific landscape: Buffalo Road cemetery
- Light/dark, joy/sorrow
- Fauna
- Flora

Opening 5pm **Friday 14 February** at Hauraki House Gallery, Coromandel.

Runs **15-23 February**. Open daily 10.00am-4.00pm

Then Carlton Gallery Katikati **9-22 March**.



WTS (Watch this Space) Coromandel

Between You and Me
Invitation to Coromandel



Artists: the sixth WTS

(Watch this Space) Themed Art Exhibition

2016: Secrets Gifts and Memories – Spheres of Connection

2017: Making Conversation

2018: Not all those who wander are lost

2019: Ask where I'm Local and In Transit

2020: Between You and Me

A meeting of participating artists will be held later in February at which we will discuss the theme and be ready to share an indication of the nature of our intended artwork.

Works will be displayed at Hauraki House Gallery for the duration of the exhibition: 10am-4pm daily from **Saturday 16 May to Sunday 24 May**, plus a formal opening on **Friday 15 May**.

Works may be in any artistic media but must have a strong visual component, must be new work not previously exhibited, give a considered and original artistic response to the theme, must be available for sale.

Artists interested in participating should contact the exhibition curators John Eaglen and Sally Tennent-Brown by emailing info@wtscoromandel.org by Friday 14 February

Two Thames exhibitions

The Sea Level is Rising

Exhibition of artworks (sculpture, photo montage and paintings) by Uli Chrisoffersen. Opens in January and runs until **7 March** at Galley 604, 604 Pollen Street, Thames.

Further info 021 159 3144 or 022 466 1437

Impressions

Sculpture by Uli Chrisoffersen (School of Art, Berlin), and paintings by Richard Chrisp (Ecole des Beaux Arts, Paris) at Carsons Gallery, 600 Pollen Street, Thames.

Preview 4pm on **1 February**, runs until **25 February**.

Info 021 159 3144 or phone Carsons on (07) 868 6301.



Join us, it could change your life.



St John
Here for Life

Are you 18 years or older, have held a full NZ drivers license for at least 12 months, have a clean Police and driver record, and can commit to ongoing clinical and station training? If so, we would love to hear from you!

Join your local ambulance station and help provide ambulance cover in your community. Volunteering as an Ambulance and Events Officer is a rewarding role, with flexible hours available. Become a first responder and gain NZQA recognised training.

To find out how you can train to become a St John volunteer, contact **Coromandel Station on (07) 866 8279**. You'll never look back!

Pastel Artists Coromandel

By Rosemarie Murphy

We held a Christmas luncheon in Annette and Phil's home in December with Phil masquerading as Father Christmas. It was a lovely way to mark the end of the year.

Our Pastel Group starts again on **4 February** in the Aero Club rooms on Tiki Road at 9.00am until 12.00noon. We look forward to seeing some new members in 2020 so if you are interested come along to meet us with a cuppa provided.

We are holding a portrait workshop in February with Maxine Thompson Master Pastelist from Rotorua as tutor. Numbers will be limited so you had better be quick if you would like to join us.

Thank you to Creative Communities for their generous donation towards this workshop.

Contact Allan Beaver Ph (07) 866 8053 or Rosemarie Murphy (07) 868 4859



Pangaea NZ Tour 2020

Two of India's leading young classical musicians Saptak Sharma and Mayank Raina are joining New Zealand composer/songwriter Mike Hogan to perform their own unique blend of music across the country.

The trio, which calls itself PANGAEA to reflect how music joins people across cultures, will be touring in support of their debut, self-titled album.

The group performs a fusion of Indian and Western musical styles. They use songs, Hindustani and European Classical music as well as improvisation, effects and a range of compositional devices to create their own particular sound.

PANGAEA consists of three professional musicians: Tabla player Saptak is one of the top young classical musicians in India and a recent winner of the All India tabla competition, Sitar and flute player Mayank, himself one of only two musicians in India to ever achieve an A grading with the prestigious All India Radio in two instruments simultaneously, guitarist and singer Mike has been working as a musician in NZ and abroad for the last 20 years.

PANGAEA perform original songs as well as unique covers of other artists and can range from fast improvised Ragas to quoting J.S. Bach in the middle of a contemporary song.

PANGAEA will be undertaking this second NZ tour in February/March and will be performing at Hauraki House Theatre on **Friday 28 February**. Tickets are \$20 from www.undertheradar.co.nz



Coromandel Players News

By Liz Cameron

Towards the end of March, dates and times to be advertised later, we have a special treat in store! One of our best best known and loved players is doing a solo play. "The Daylight Atheist" by award-winning satirical cartoonist Tom Scott will be performed by Jim Davis, and will have you roaring with laughter!

Tom Scott is one of New Zealand's most respected writers and satirists. The Daylight Atheist is a funny, fierce and profoundly moving one-man play loosely based on the life of his father. Cantankerous and isolated, the ageing Irish raconteur Danny Moffat retreats from the harsh light of the world to his bedroom. There, under old newspapers and beer bottles, he sorts through a lifetime of memories and regrets, from growing up in Ireland, to the hopes and disappointments of immigration to New Zealand.

Tickets will be on sale at the Coromandel Town Information Centre from **1 March**.

Following The Daylight Atheist, we are hoping to produce a play called Pass it On by Renee which celebrates the role of working class women in the 1951 New Zealand waterfront dispute. For this play we are looking for two young men, aged 30-40ish to play the two main male parts. Please get in touch if you are interested. 027 494 1188. No acting experience necessary, just a commitment for the 8-10 weeks of rehearsals. Production to begin late March. A very good play with an important message. Parts for women also available. Please get in touch if you want to be involved in any way.



PANGAEA

ALBUM RELEASE TOUR

NEW ZEALAND 2020

HAURAKI HOUSE THEATRE

FEB 28TH 7:00PM

TICKETS@UNDERTHERADAR



BUILDING CENTRE

COROMANDEL TIMBER
PH: 866 8848

"We'll see you right"

MASSAGE THERAPY COROMANDEL



- ★ Deep Tissue Remedial Bodywork
- ★ Relaxation / Swedish massage
- ★ Lymphatic Drainage
- ★ Hot Stones Massage

Lynley Ogilvie, RMT.

Call for an appointment: (07) 8668684 or 021 866868

Arts continued

2020 Open Studios Coromandel

By Kaye Anderson



Arts Tour registrations

Calling all artists from Coromandel Town, Wilson Bay to Whangapoua, Colville and beyond, it's time to register for the October 2020 Open Studios Coromandel Arts Tour event.

Registration forms can be forwarded to you by contacting Diann Cade on ed-diann@xta.co.nz or calling her on 027 286 5146. Registrations close **28 February**.

e-bike summer tour

Visitors to Coromandel Town, check this out! It could be fun. Collect an Artist Guide and hire an e-bike from Bush-e-Bikes to do a tour of artists' studios open over summer.

Their studio locations and styles range from exhibition galleries to workspaces with wonderful sea and bush views. It's a great way to explore the area and at the same time see the work our artists do.

If you find yourself wanting to purchase works and it seems impossible to carry them on your e-bike, the artist is certain to be happy to deliver them to your Coromandel town accommodation.

This month's Arts Tour artists:

Lynne Fenwick

"I'm very crafty," says newcomer to the Arts Tour Lynne Fenwick. She's a new long-term resident having recently moved here after 11 years as a holiday-maker. That means renovations are the order of the day with a studio in the pipeline to be ready for Open Studios in October.



In her work Lynne's on a journey destination unknown, but her latest passion for re-purposing is very evident. Bags made from recycled jeans lined with old curtain sample fabric are the main items, but left-over bits and pieces

become pot-plant holders, outdoor noughts and crosses sets and cell phone pockets which make recharging look stylish. Every one unique, her wine-bottle carriers may sport a handy zip front or a convenient pocket for your keys.

This creative and imaginative stitching began when Lynne was a child. With three brothers she was encouraged to follow "feminine" pursuits and so was always sewing and crafting. Now in Coromandel, she's excited to be part of its vibrant art community. She loved being part of last year's Arts Tour, the people who visited her, and their positive feedback on her work.

You can be sure to find a piece of useable art at Lynne's place. Phone her for a visit on 021 079 9349.

Diann Cade

After ten years of participating in the Arts Tour, Diann Cade had her



first solo exhibition in Hauraki House last year. This year, it's a collaboration with Jan Linklater. With ten themes agreed upon over a glass or two or wine, Diann took up the challenge of a stimulating new approach to subject matter.

"Usually the concept for a painting comes from what you see and experience around you. But having set topics gave me the chance to do things from out of my head."

For example, the painting pictured here is Diann's interpretation of Titian's masterpiece, "Death of Actaeon." In the original, the goddess Diana is at full stretch as she shoots her arrow into Actaeon, who instantly turns into a deer and is killed by her dogs. Diann has recreated that dynamic energy in a woman torn between her two children while the family dog is poised to snap up whatever morsels the child in the highchair might drop; and so the myth is domesticated and softened somewhat!

The idea came in the middle of the night. After that the challenge was to maintain the strength of the composition, the tension between the mother, child and dog and determine effective colours.

Aptly titled "Double Vision", the exhibition opens **Friday 14 February** 5pm. It promises to be both exciting and thought-provoking.

For more information about the artists go to www.coromandelartstour.co.nz or follow us on www.facebook.com/CreativeCoro/

Coromandel Art Group

By Barbara Peddie

As I write this, we are all getting prepared for our exhibition which, by the time you read this, will be in full swing.

There is a lot to be organised beforehand, not the least the actual hanging of the paintings which is orchestrated very professionally by Val Gray.

We really look forward to this event, when we can show you all just what we have been doing over the last year.

So if you haven't checked us out yet, call in to Hauraki House Gallery, you will be very welcome. We are open daily from 10am to 4pm, until **Sunday 9 February**.

See you there!



Tattletale Saints

Tickets are on sale for this popular Tui award-winning kiwi duo who have made Nashville their home. Tattletale Saints are currently touring NZ to celebrate the January 2020 release of their latest album, *Dancing Under the Dogwoods*.

Their third album showcases the duo's perfectly intertwined harmony vocals and Winstanley's clever yet emotional songwriting. Their musicianship, while always masterful, feels relaxed on this offering, as though they no longer have to prove themselves. It is clear that Winstanley and McGowan have spent years working towards the creation of music that is organic, honest and effervescent, and with *Dancing Under the Dogwoods*, Tattletale Saints truly are here at last.

Their last Coromandel show sold out well before the night and ticket sales have already taken off so get yours now. Head into Richardsons Real Estate to collect your tickets or contact Robin on robinmunch24@gmail.com to order online.

One Show Only – **Thursday 20 February** 7.30pm (Bar and snacks from 6.45pm) at Hauraki House Theatre, Kapanga Rd, Coromandel Town. Tickets (\$25) are available from Richardsons Real Estate, 151 Kapanga Rd, Coromandel Town or online from robinmunch24@gmail.com

www.tattletalesaints.com,
www.facebook.com/tattletalesaints

WANT

NATIVE NURSERY & EDIBLES
WAITAIA RD, KUAOTUNU

A wide range of beautiful natives,
palms and fruit trees.

Potting mix, compost, mulch, chook manure.

Open Thursday- Sunday 8.30-4.30 or by phone appointment

Please phone Colin Hill 07 869 5910

Sport

Coromandel Croquet Club

By Kaye Anderson

The heat is on and so we have moved to "summer time", meeting on Tuesdays and Fridays at 8.45am for a 9am start.

While our lawns are looking rather dry and brown, they are also looking very tidy with neatly trimmed edges thanks to the purchase of an electric edge-cutter and its use by Vice Captain John Bell.

If you would like to try out the game of croquet and need more information, call Kaye on (07) 866 8968. Otherwise just come along on a Friday at 8.45am. The club is situated in Woollams Ave, next to the Bowling Club.



Coromandel Recreational Fishing Club

By Allison Brown and CRFC Committee

Hi to all,

Now the festive season has come and gone (I don't know where) back to the nitty gritty.

I'm not going to try predicting the weather patterns or the fishing as it hasn't been worth mentioning much this year so far but looking forward to it picking up. Usually with the warmer water the fish start coming back in.

Just heard on the TV that there has been a lot of shark sightings around Gt Barrier but a chap who has been studying sharks for some time said that it is a good sign as sharks are good for the oceans eco systems and we have more people on the water as well as drones flying around noticing them more, so that is very reassuring!

We took our Aussie relative out mid January and he had a very good day, thank goodness. Now he can go home and tell his friends it's great fishing out from Coromandel.

Fish of month for February is snapper for Club Members.

By the March edition we will have had the Anniversary Comp so will have the results.

Looking forward to the "Classy Chicks" Competition on **7 March**. Registration forms can be obtained from Wyuna Studios and Fish & Dive or email us at coromandelfishingclub@gmail.com we will send you a copy.

Here's to tight lines as always.

Coromandel Golf Club

Our Course is in fantastic condition and we have had many visitors throughout December and January visiting the course for a round of Golf and providing wonderful comments re the state of the course. Well done to our greenkeeping staff and a big thank you.

Club Captains Report.

Two tournaments have been played recently, our Christmas Tournament with 60 entries, 30 joining us from our golf neighbors at Whitianga. Great prizes and a wonderful Christmas lunch.

The Coromandel Open, sponsored by Stan Hill, from the Coromandel Hotel. Thank you very much.

Winning Ladies: Peg McLean, Junior: Damian Lydford. Senior: Max McLean.

Ladies Club Captain report

Some of the ladies have enjoyed various Christmas tournaments in December and came away with a few prizes. Well done ladies.

A few of the ladies and I believe men, enjoyed some coaching from Jenna Gainford, a very good coaching session and we hope Jenna can make regular visits to help our golf.

A huge thank you to everyone who helped with our Christmas tournament and the Coromandel Hotel tournament. Both tournaments were a great success.

Ladies are continuing to play golf on Tuesdays, and all are welcome to come and join in, this includes the men.

Ladies Opening Day

Ladies opening day is **11 February** and we are looking forward to a great golfing year. Introduction to golf, 9.30am start, short lesson before playing some holes. No charge. Clubs, balls and tees provided, light lunch. Come along to have a fun time.

For any further information contact Elaine 021 256 3490 or Philippa 021 041 2447.

Club Days are as follows. Please phone our club captains for more information:

Saturdays: 12.30pm start – Ron Brooking 021 807 672.

Ladies Day: Tuesdays 9.30am – Elaine Everitt 021 256 3490

Wednesday: Midweek – Ron Brooking 021 807 672

Twilight Golf Fridays: 4.30 to 5.30pm start – Philippa Medlock 021 041 2447.

Green fee and cart hire – Ph Lynne 021 079 9349.



COROMANDEL.N.Z

866 8635

See meeting list for class times

A funeral is a special day.
It's a chance to celebrate the
importance of a life;
to share memories of the
good times, the funny
moments, and the difference
your loved one has made.

Understanding the
importance of memories

TWENTYMANS

FUNERAL DIRECTORS
Since 1867

07 868 6003

funerals@twentymans.co.nz
www.twentymans.co.nz

PENINSULA ELECTRICAL SERVICES LTD

Commercial & Domestic Electrical Contractors



RAVINDER & SUE RAJ

Registered Electrical Inspector

P.O. Box 109

Coromandel

Telephone (07) 866 8166

Free Phone: 0800 4 Electrical (0800 435 328)

E-mail: ravinder@e3.net.nz

1750 S/H 25

Coromandel

Fax (07) 866 8162

Mobile (0274) 738 734

Classifieds

Classifieds cost 30 cents per word – please email your words to corochronicle@gmail.com or call/txt Debbie on 021 235 6648.

PROFESSIONALS

A LOCAL CARPET AND VINYL LAYER just returning home after 45 years in the cities. Been involved in the flooring trade for 35 years plus. Competent, honest and reliable. 021 214 4529.

A LOCAL HANDYMAN Doug Marsters for all types of maintenance jobs including Gib Fixing and Plastering, Ornate Cornice, Archers and Ceilings new and old. Over 20 years' experience. Ph 022 019 9255 or 022 019 9133 free quotes.

A-Z COROMANDEL THERAPIES Tina 021 20 19 750. Therapeutic and recreational Hawaiian KaHuna Massage & Bodywork. The place to recover & feel better. 25 years of experience. Open class: natural movement & relaxation, each Thu 5.10 - 6.20pm, hall above the swimming pool in Coromandel Town, \$10, all welcome.

ABBY'S HEALING HAVEN 021 352 486. *Therapeutic and relaxation massage therapy 1 hour \$80, 90 mins \$110 *Pranic Healing- Chakra and energy clearing and balancing 90 minutes \$110 *TBT- Trauma busting treatment, an effective process for trauma and symptoms of PTSD, 60 minutes \$80 *Organic skincare and makeup consultations- Organic Ayurvedic facial massage 30 minutes \$45.

AFFORDABLE DESIGN for print and web. For businesses and artists. Tuition in Photoshop and Indesign available. Jacqui 022 392 8588.

ALL ASPECTS OF TREE WORK done professionally. Coromandel based Dynamic Tree Care. Call today 027 451 2224 or (07) 866 8177.

ARE YOU THINKING of having those needed jobs done? Whether it be Carpentry, Decorating, Tiling, I can give you advice and a free quote. Call Vaughan on (07) 866 7969.

BALLET CLASS FOR ADULTS Basic Ballet fundamentals for Beginners. Or, relive your Ballet youth. Strengthen, stretch, improve posture, with an expressive outlet to Music. PH:- Marilyn Swan 027 336 5263. Email: swanebbs@gmail.com. Venue: Coromandel Citizens Hall 455 Kapanga Road. Begins Wednesday 19 February 10am to 11am. \$10 per class. Registered Teacher & Life Member RAD. 42 years Dance Teaching Experience.

BEGINNER YOGA WITH BECKS Tuesday's at the Anglican Church Hall, 170 Tiki Rd. 5.30pm to 6.45pm, \$10. All welcome, equipment provided. Phone 027 407 0079 for more info, www.rebeccaleaker.com.

BRICK AND BLOCK LAYING SPECIALISTS. L.B.P. Phone Joel 021 0234 0210.

BROKEN GLASS? Call Mike Coromandel Glass (07) 866 8869.

CARPENTRY: Windows, Doors, Decks, Kitchens. Sound Tradesman. Free Quotes. Vaughan Udall (07) 866 7969.

COMPUTER FIX. Your local support and expert for computer repairs, upgrades, backup solutions, virus removal, software problems, purchase advice or tuition. Micha Wellnitz, ph (07) 866 8932.

COMPUTER SOLUTIONS. Microsoft Certified Systems Engineer with over 15 years of IT experience providing solutions and support service for PCs, Laptops, Printers, Wired and Wireless Networks, Virus and Spyware removal, Data Protection and Recovery. Up gradations, Consulting, Design and Training. Contact: Dheeraj Bali Ph (07) 949 4162 Mob 021 207 1341 or 021 0815 5340 Email: eworks.nz@gmail.com

COROMANDEL CATTERY (07) 866 8117, 027 433 1665.

COROMANDEL GARAGE DOORS: Servicing & refurbishing of all types of garage doors and auto openers – sectional, roller & tilt doors. Ten years' experience. Free Quotes. Servicing the Coromandel Peninsula. Call Don 022 453 2188 or email: corogaredoors@gmail.com.

COUNSELLING AND THERAPY I have been working for some years as a Psychotherapist and Counselor in Australia and have just settled in Coromandel to begin private practice. I specialize in single and couple counselling, anxiety and depression grief and loss and stress related mental health issues. I also am a Mindfulness and wellbeing trainer. For an appointment or further info Call Rachel 022 410 7227

DRAFTING AND ARCHITECTURAL DESIGN Drafting, concept design and 3D modelling. House projects, sheds, deck and pergolas. Contract work and special rates for owner builders. Contact: Glenn - 022 521 3276.

ELECTRICAL NEEDED DONE? Call David 027 270 9140.

ESOL FOR IELTS, UE AND LITERACY. Please email aoteadesign@gmail.com

GIB STOPPER - Richard Field. Local and coastal. Ph 029 778 8645.

GIB STOPPER/PAINTER Alpha Drywall, Geoff, local 022 027 0290.

HENARE'S GENUINE MULTI SKILLED SERVICE. Total competence in the following skills: building renovation or repair; gib fitting and stopping; carpet or vinyl lay or repair; engineering fabrication and welding; wof or cof repair for cars or small trucks; panel beating for tractors or small trucks. Job satisfaction guaranteed. Ph 021 214 4529.

MOBILE SHEEP SHEARING call AJ 027 499 1448.

NAILED@SHEPSPLACE GEL POLISH and Nail Art Specialist phone or txt for appointment 022 432 4519.

PAIN RELIEF MASSAGE, Call and discuss whether I can help you. \$60.00 / per / hr. My clinic or your place. 027 4263 2521 or (07) 866 7077 Peter Bacchus, Dip. Massage therapy.

PAINTING AND WALLPAPERING: Neat tidy work. Free Quotes. Vaughan Udall (07) 866 7969.

PIANO TUITION: Marilyn Ebbs. Experienced in The Trinity College of Music London & ABRSM exams. Beginners from age 6 to adult. M: 027 336 5263. Email: swanebbs@gmail.com

RANCH SLIDER WON'T SLIDE? Call Mike Coromandel Glass (07) 866 8869.

ROOF PAINTER AVAILABLE, industrial quality paint used, free quotes, phone Dave 022 049 3649.

SOLAR SYSTEM DESIGN & INSTALL Good Energy your local Solar Specialists based in Whitianga. Ph Simon 021 242 3394.

STUMPGRINDING - Machine assisted stump removal, all sizes all areas. Ph 027 472 6627.

SUMMER IS HERE: Jobs to be done! Phone Vaughan Udall for a free quote (07) 866 7969.

SUNSET YOGA WITH VANESSA. Thursdays at Colville School Hall (at rear of school), 5.30-6.45pm, \$10. School term only. Suitable for all levels, BYO yoga mat (some available). Phone 021 124 7267 for more info. School Term only.

THE LIGHTHOUSE STUDIO: Joinery/ custom woodworking, furniture, Persian rugs and LOCAL ART. Between Coro Pies and Morrissey Automotive, down the green lane. 75 Wharf Rd 021 038 0923.

TILING: Wall and floor tile laying service. High standard of work. Free quotes. Vaughan Udall (07) 866 7969.

WINDOW CATCH BROKEN? Call Mike Coromandel Glass (07) 866 8869.

FOR SALE

BED - SINGLE FOLDAWAY in as new condition. \$60. Phone Kaye on (07) 866 8968 or 021 2019 3775.

GARAGE SALE: Sat 8th Feb, 9 a.m. 112 Te Tiki St.

LIZZIE'S SAMOSAS AND PURE EARTH PRODUCTS are back at the Saturday market at the old post office by the dairy (except on Feb 7th): see you there 021.035.8789.

NOW SELLING NATURAL INTERIOR AND EXTERIOR oil for wood. Made in NZ by the Naturalhouse Company. Excellent product, easy to use. Available from The Lighthouse Studio, 75 Wharf Rd ph 021 038 0923.

SHEEP HOGGETS from farm gate. Please phone (07) 866 6830.

FOR RENT

A&JS STORAGE Totalspan units Ph Judy 021 071 2252.

SITUATIONS VACANT

CLEANER WANTED, call Bridgette 027 722 4476.

Poetry SPOT

Ode to packaging

By Kaye Anderson

I bought a pump from Kathmandu
branded cardboard and green plastic too
The Harpic lid I could not undo
foiled by childproof magic
a knife was needed
to hack my way through

A parcel came via NZ Post
inside plastic red and white
I tore it open
Scarves were revealed
flowing vibrant silk
in tissue paper gently wrapped

Rice flakes give the muesli crunch
They come in plastic
for the earth to munch
Year after year
it can never digest
"Gluten Free, Natural Brown"

Summer comes with healthy wraps
Keep them fresh in ziplock bag
Throw away and kill our land
Toilet rolls, they come too
Caged in pretty plastic
How did they come in '52?

Cellophane, oh cellophane
Airtight it must be
Round the cardboard
Round the tea
Round the crackers
Round the sea

Who is the god – or goddess – of packaging?
Mighty Brand?
Sweet-smelling Hygiene?
Capitalism, competition, care-less-ness

WANTED

VEHICLES WANTED. Cars, trucks, vans, utes, 4X4's. Wanted dead or alive. \$ Top cash paid \$. Phone 0800 505 099.

WANTED ALL LIVESTOCK We inspect in the paddock. Also we transport every Thursday to Waikato's largest saleyards in Morrinsville. Phone Dave Coatsworth 027 481 7100.

WORK WANTED

DRAFTING AND ARCHITECTURAL DESIGN Drafting, concept design and 3D modelling. House projects, sheds, deck and pergolas. Contract work and special rates for owner builders. Contact: Glenn - 022 521 3276.

DYNAMIC TREE CARE - Council approved professional local arborist service for all Tree Work. Fully Qualified, Equipped and Insured. Health and Safety compliant. Free quotes. Jobs large or small. Professional chainsaw sharpening. Call now (07) 866 8177 or 027 451 2224.

STUMPGRINDING - Machine assisted stump removal, all sizes all areas. Ph 027 472 6627.

TREE SERVICE. Dismantling or pruning. Free quotes. Call Jeremy Haszard 027 421 0603.

Advertisers' directory

Company	page
360 Discovery Ltd	13
A Taste of Matarangi	2
Alpha Drywall	4
Ann Kerr-Bell – Natural Medical Centre	20
Coro Gym	31
Coromandel Accommodation	15
Coromandel Construction	4
Coromandel Garage Ltd	16
Coromandel Marine Engineering	14
Coromandel Marine Farmers' Association	2
Coromandel Plumbing (1986) Ltd	23
Coromandel Quarry Ltd	22
Coromandel Refrigeration	36
Coromandel Small Engine Services	5
Coromandel Towing	24
Coromandel Town Seafood Fest	11
Corotime	2
Driving Creek Railway	14
Dynamic Tree Care	7
Flooring Xtra	5
GDC Consultants Ltd	21
Good Energy	22
Harcourts	18-19
Hauraki Taxation Service Ltd	6
Himalaya Shop	27
House of Travel	17
ITM	29
James and Turner	11
James Drainage '97 Ltd	12
Llandem Consulting Engineers Ltd	10
Lynley Ogilvie – massage therapist	29
Mana	21
Michael Brewerton – Architect	24
Pangaea	29
Papa Aroha Engineering	27
Peninsula Electrical Services Ltd	31
Purnell Lawyers	22
Richardsons Real Estate	8-9
Rob's Small Motor Repairs	10
Ruamahunga Bay Joinery	10
Scott Revell Building Contractor	20
Scott Simpson MP	12
Star & Garter	17
St John	28
Surveying Services	6
TCDC	25
Te Korowai Hauora o Hauraki	23
Trinity Network	35
Twentymans	31
Waitaia Nursery	30
We Pay Top Cash	16

Coromandel Town weekly and monthly meetings**Every Monday**

Step Aerobics at Coro Gym.....8am
 Coromandel Hikers' Group, Hauraki House, Colin & Elspeth (07) 866 71379am
 Monday Walkers, Woollams Ave car park north end, Irene 021 157 84089am
 Sit n Be Fit at Coro Gym.....9.30am
 Coromandel Playgroup, St Andrews Church Hall, Rings Road.
 Contact Angee 021 255 039910am-1pm
 SeniorNet Coromandel contact Loes (07) 866 8053.....4pm
 Bridge, St John rooms.....7pm
 Four-part harmony singing, Sue (07) 866 8833.....7.30pm

Every Tuesday

Croquet, Woollams Ave, Kaye (07) 866 89688.45am
 Pastel Artists Coromandel, Coromandel Aero Club Rooms (07) 866 7220.....9am-12pm
 Coro Walking Group, Lotto Dairy, Ruth (07) 866 72469am
 Open Floor Dance, Mana Retreat Octagon.
 October dates: 1st, 15th, 22nd, 29th. Price \$15.9.30-11.30am
 Yoga for everyone, Colville Hall, Kate 021 125 315210am
 Playcentre, Woollams Ave.....10.30am-1pm
 Beginner Yoga with Becks, at the Anglican Church Hall, 170 Tiki Rd, \$10.
 Contact 027 407 0079.....5.30-6.45pm
 Coro Motorcycle Club, Star & Garter, John 027 234 10137-9pm

Every Wednesday

Step Aerobics at Coro Gym.....8am
 Coromandel Community Organic Garden volunteers' drop-in time.....9-11am
 Sit n Be Fit at Coro Gym.....9.30am

Every Thursday

Coro Walking Group, Lotto Dairy, Ruth (07) 866 72469am
 Coro Bowls club day.....9.30am
 Coro Art Group, St Andrew's Church Hall, Val (07) 866 89119am-12pm
 Free Guided Meditation, Havalona Pyramid10-11am
 Yoga, Move & Relax at Trust Waikato Events Centre (upstairs Swimming Pool) contact Tina 021 201 9750.....5.10-6.20pm
 Sunset Yoga with Vanessa, Colville School Hall, \$10. School Term only.
 Contact 021 12472675.30-6.45pm

Every Friday

Step Aerobics at Coro Gym.....8am
 Croquet, Woollams Ave, Kaye (07) 866 89688.45am
 Yoga for everyone, Anglican Hall, Kate 021 125 31529am
 Playcentre, Woollams Ave.....9.45am-12.15pm
 Coromandel Home-school Group, Julene (07) 866 833310am
 Coromandel Tennis Club "club day"4pm

Every Saturday

RSA Coromandel, RSA Club Rooms Woollams Ave. Courtesy van available.
 President Kevin Stone (07) 866 7576.....3.30-7pm

Every Sunday

Anglican Church Service10am
 Coromandel Tennis Club "club day"1pm

Monthly

1st Mon – Coro Patchwork & Quilters, St John rooms,
 Jill (07) 866 7484.....9.30am-3.30pm

3rd Mon – Coro Patchwork & Quilters, St John rooms,
 Jill (07) 866 74849.30am-3.30pm

1st Wed – Coro Embroiderers' Guild, St John rooms,
 Margaret Burgess (07) 866 576910am-3pm

1st Wed – Lions Dinner meeting, St John rooms.
 President Jean Smith 021 208 7576.....6pm

2nd Wed – Garden Circle. Jeni Mudgway 021 0227 53411pm

3rd Wed – Lions Business Meeting, St John rooms.
 President Jean Smith 021 208 7576.....7pm

Last Thurs – Green Drinks at Star & Garter5pm

1st & 3rd Sun – Church Service at St Andrew's Church
 Rings Road.....10am

If your meeting has been omitted, please email Debbie at corochronicle@gmail.com with the subject "meeting", or txt/ph 021 235 6648, or post details to PO Box 148, Coromandel 3543. Please include contact name and phone number.



More properties for sale with
Team Rob & John
— We're Locals. We get it. —



TRINITY
NETWORK
REAL ESTATE
(LICENSED REALTOR)



Coromandel, 2160 Long Bay Road
Download Infopack: www.trinitynetwork.co.nz/136454/



Coromandel, 205 Bellville Drive
Download Infopack: www.trinitynetwork.co.nz/136674/



Coromandel, 2385 Wyuna Bay Road
Download Infopack: www.trinitynetwork.co.nz/136665/



Te Kouma, 84 Kowhai Drive
Download Infopack: www.trinitynetwork.co.nz/136579/



Kennedy Bay, 1170 Kennedy Bay Road
Download Infopack: www.trinitynetwork.co.nz/136640/



Tuatēawa, 22 Puriri Place
Download Infopack: www.trinitynetwork.co.nz/136575/



Colville, 89 Wharf Road
Download Infopack: www.trinitynetwork.co.nz/136546/



Tuatēawa, 74i Waihirere Drive
Download Infopack: www.trinitynetwork.co.nz/136591/



Preece Point, 2328 Tiki Road
Download Infopack: www.trinitynetwork.co.nz/136576/



Coromandel, Coro Time
Download Infopack: www.trinitynetwork.co.nz/136562/



Coromandel, Coro Cafe
Download Infopack: www.trinitynetwork.co.nz/136447/



Preece Point, 1740 Manaia Road
Download Infopack: www.trinitynetwork.co.nz/136601/

Trinity Network Commission 2.5% up to \$500,000 and 1.8% there after + GST

3 years of value for money commission rates.
3 years of great service.
3 years with Trinity Network in Coromandel.

Contact us today for a free confidential, and no obligation appraisal on your property.

If you would like a reference from any of our happy purchasers & vendors, please don't hesitate to ask.



Team Rob & John

Rob Keatley
M : 0275 777 424
E : rob.keatley@trinitynetwork.co.nz

John McCaughan
M : 021 212 4423
E : john.mccaughan@trinitynetwork.co.nz



TRINITY
NETWORK



perfect AIR

PERFECT PRODUCTS | PERFECT SERVICE | PERFECT AIR

HEAT PUMP DEALS

Bed Room



4.7 kW_{max}

Daikin FTXS25LVMA

Heating 3.4 (1.3-4.7)kW
Cooling 2.5 (1.3-3.2)kW

Fully Installed Price:

\$2197



Living Room



6.8 kW_{max}

Daikin FTXS46LVMA

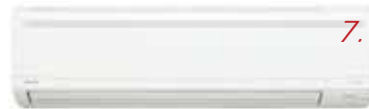
Heating 5.1 (1.7-6.8)kW
Cooling 4.6 (1.7-5.3)kW

Fully Installed Price:

\$2950



Open Plan



7.7 kW_{max}

Daikin FTXS50LVMA

Heating 6.0 (1.7-7.7)kW
Cooling 5.0 (1.7-6.0)kW

Fully Installed Price:

\$3297



Energy Efficient, Quiet, Reliable, Comfortable, Clean, Healthy



Large Area



10.8 kW_{max}

Daikin FTXM71RVMZ

Heating 8.1 (2.0-10.8)kW
Cooling 7.1 (2.0-8.9)kW

Fully Installed Price:

\$3795



WiFi Control

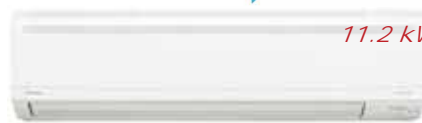
Optional Wifi control

Control your Daikin Heat pump with your Android or iOS device. All you need is a permanent internet connection for your Wi-Fi network, and an internet connection for your phone or tablet. You can monitor and control your system from virtually anywhere.



\$204

Monster



11.2 kW_{max}

Daikin FTXS85LVMA

Heating 9.0 (3.0-11.2)kW
Cooling 8.5 (3.0-10.5)kW

Fully Installed Price:

\$4155



Free Onsite Consultation and Quotation Available

Introducing the most Efficient Heat Pump, Ever...

More than just a heat pump the Daikin US7 Range can ventilate, humidify, dehumidify, purify, heat & cool. The US7 is the first heat pump in New Zealand to be awarded a 7-star super efficiency rating. Call us today to see how this distinguished, advanced system can transform your home



Daikin FTXZ25NV1B

7.5 kW_{max}

Heating 3.6 (0.6-7.5)kW
Cooling 2.5 (0.6-3.9)kW
7 Star Energy Rating
Input 0.42kW
COP 5.9

\$3637

Incl Back to back installation

Daikin FTXZ35NV1B

9.0 kW_{max}

Heating 5.0 (0.6-9.0)kW
Cooling 3.5 (0.6-5.3)kW
5.5 Star Energy Rating
Input 0.68kW
COP 5.15

\$3905

Incl Back to back installation

Daikin FTXZ50NV1B

9.4 kW_{max}

Heating 6.3 (0.6-9.4)kW
Cooling 5.0 (0.6-5.8)kW
4.5 Star Energy Rating
Input 1.18kW
COP 4.6

\$4610

Incl Back to back installation



Auckland - Hauraki - Whitianga - Coromandel

Perfect Air
7-12 Crosbie Road
Pukekohe 2120
09 239 0905

Coromandel Refrigeration
435 Kapanga Road
Coromandel 3506
07 866 8463

Coastal Refrigeration
30 Campbell Street
Whitianga 3510
07 866 4140

www.perfectair.co.nz

07 866 4140

*All prices include GST. Installation prices are based strictly on back to back installation and include electrical connection with an electrical certificate of compliance. A Free no obligation onsite quotation and consultation to discuss which heat pump best suits your home is available. Prices valid for quotations booked before May 30th 2019 or while stocks last, strictly limited stocks available.