

January 2021  
Volume 25 Issue 1

# Coromandel Town Chronicle

www.coromandeltownchronicle.co.nz • The community magazine for Coromandel Town and surrounds since 1996

**FREE**  
Community Magazine

## New Hub to get underway soon

SEE PAGE 2



Santa's visit PG 4



Special adventures PG 7



Bush kura PG 28



## Coromandel Town Chronicle

Cover picture: Coromandel Hub Project building concepts

The *Coromandel Town Chronicle* is published by Jude Publishing Ltd. It is delivered free to the Coromandel area.

Jude Publishing Ltd  
PO Box 148, Coromandel 3543  
www.coromandeltownchronicle.co.nz

For advertising please email Debbie on  
corochronicle@gmail.com  
or phone 021 235 6648

If you have any news stories that you'd like included please email  
corochronicle@gmail.com.

If you are not sure how to put an article together for publication then find tips and advice on the website:  
www.coromandeltownchronicle.co.nz/html/guidelines.html

The Coromandel Town Chronicle is open for everyone to contribute, however the editor reserves the right to select the articles, advertisements and letters that are published.

The Coromandel Town Chronicle is printed with vegetable oil based inks by Print House Ltd, Hamilton. An accredited FSC and PEFC printer.

**Deadline for the next issue is 4pm Monday 18 January.**

**Send your articles and advertising to corochronicle@gmail.com**

**Want to support the CTC? Live out of town? You need an annual subscription.**  
\$50 (incl. GST) NZ postage only.  
See contact details above.

Disclaimer: The publisher and its editors of the Coromandel Town Chronicle shall not be responsible in any way for opinions expressed in letters and articles contained in the Coromandel Town Chronicle or for loss or damage suffered by anyone in reliance upon the information contained therein. Further, no endorsement of any product or service featured or advertised in the Coromandel Town Chronicle should be implied or assumed.

ISSN 1178-721X (Print)  
ISSN 1179-4895 (Online)

## Emergency

Call 111.  
AED's in Coromandel Town: Fire Station, Ambulance Station, Four Square, Coro Family Health, Bowling Club/RSA, Te Korowai and Phoenix House. Although AED's are important, St John say performing continuous chest compressions/calling 111 takes priority.

# Building for the community's

By Julie Dann

The final piece of the jigsaw for the Coromandel Hub Project building has fallen into place with December's announcement of a \$500,000 grant from the Lotteries Community Fund.

The Coromandel Independent Living Trust (CILT) scheme has been in development since 2014 with construction set to start in 2021.

CILT Trustees believe the building will future-proof services for the town and upper peninsula, and it will be the first new community-owned building of this scale in the area.

Construction of stage one of the two-stage project is slated to start in May 2021. The Pound Street building will offer meeting rooms, office space, hot-desking and high-speed internet facilities.

It will also provide increased outreach rooms for visiting professionals, such as lawyers, osteopaths, counsellors, Probations NZ and the IRD.

In addition, the building will boast much-needed amenities for tourists, visitors and locals alike with a specific area containing toilets, lockers, changing rooms and a tent drying room.

The site, opposite the school's rugby grounds, has space to allow phase two of the build, dependent on funding.

The elevated location is an added advantage in case of flooding and emergency weather events. Solar power is a key component of the building and will offer security of supply in outages.

The main driver for the Hub is to co-locate services and spark innovation, training and employment in the area.

The Lotteries funding adds to a \$574,000 grant from Trust Waikato in 2018.

Mike Noonan, CILT's Executive Trustee, says: "Trust Waikato generously gave us a one-year extension to put the rest of the funding in place and we are very grateful to them."

CILT also acknowledges the TCDC grant to buy the land in 2018 and the Tourism Infrastructure Fund, which funded the project to the tune of \$504,000 to include amenities for visitors.

Smaller grants were also secured in 2019, with \$12,000 from the SPAN Trust and \$50,000 from the DV Bryant Trust. The building is expected to be financially self-sustaining.

The new building will be totally accessible and disability-friendly. It will be designed using Te Aranga Maori design principles with emphasis on care for the land and whanau. CILT's kaiawhina, Jean Ashby, says she is over the moon that the Hub will embody Maori

## Editor's comment

Happy New Year!

It is great to see such a full issue. 40 pages – which the Chronicle hasn't been since before Covid-19! Hopefully Covid-19 stays away from NZ and we can still enjoy our usual beach time, family time, art exhibitions and the Keltic Fair.

If you got a new cell phone for Christmas please consider donating your old cell phone to CILT – I just read in their article that they are collecting used cell phones to redistribute to people who need them in the community.

Take care

Debbie

## Letters and opinion

### Decline Of Sea Birds In Coromandel Harbour

Yes it is sad to say but several sea birds no longer visit our harbour.

When we moved to Te Kouma 30 years ago we got great pleasure watching the gannets diving into the sea feeding on the small fish the schools of kahawai were chasing up. Unfortunately the kahawai no longer come into the harbour to feed as the small fish have gone so it is a rare sight to see a gannet gliding around looking for a feed in the harbour. We do see these birds flying past if we are out in our harbour fishing. We also used to go up to the islands where they nest every year. It would be great to know if that colony is doing well. Has it enlarged or declined. If anyone has information we would all like to know.

The other little bird we miss is the little blue penguin. We know there is not enough little fish for these birds to feed on. In the winter months when they were coming ashore to moult we would go out on the veranda before we retired to bed and hear them calling one another as they went ashore to do their moult, hiding in the rocks and flax bushes. We haven't heard them for many years now and no longer see many out in the gulf like we used to over the summer months.

I would be very interested to hear any information on how our gannet colony is doing.  
Ann McNair, Te Kouma

Email letters to the *Coromandel Town Chronicle*  
corochronicle@gmail.com. Contributions should be kept short, and should not exceed 350 words. The editor reserves the right to reject letters or edit them for clarity and space.



# future

values both in its design and its services.

CILT has a strong presence in the town. Since starting in 1994, it has constructed seven and retrofitted seven kaumatua flats, and restored the building in the Samuel James Reserve providing public toilets in the centre of town.

It developed the 4km Harray Track and built The Goldmine, Coromandel's community re-use centre. The Bizarre, the town's iconic op-shop, was gifted to CILT in 2019.



Phase one concept views

Among the services the trust delivers are the Kiwi Can life skills and values programme for 5- to 12-year-olds.

CILT employs three social workers who work with whanau, and also runs the Incredible Years parenting programme.

Another CILT initiative is the Work Co-Op, for people with disabilities, which offers computers and workshops, arts and participation in the community.

In Whitianga, art is encouraged through the Artists in the Making programme.

At present, CILT has 14 people working in a five-room office and is looking forward to a new building where activities can be extended.



Under canopy, phase two

## Farm Fresh Oysters and Mussels

**Celebrate summer with some lunchtime laziness**

**Enjoy our Gourmet Burgers, fish n' chips and fresh new season seafood in our family friendly garden.**

**SEAFOOD DELI  
OYSTERS & MUSSELS**

**Coromandel  
Oyster Co Ltd**

**We're open  
7 days a week  
8.30am-7pm (summer hrs)**

**1611 SH25 Manaia Road,  
Coromandel.  
Capital of the Peninsula  
Phone: 07-866 8028**

**www.freshoysters.co.nz  
fb: @corooyster  
Email:  
corooysterco@farmside.co.nz**



## Santa came to town

What an incredible day we all had – Santa has been and gone. He arrived in style. Thanks to the Coromandel Fire Brigade for giving him a lift as the reindeer find it way too hot in New Zealand.

There are people we would like to thank for their enthusiasm and enjoyment of all things “Coromandel”. They are tireless and are involved in many, behind the scenes activities that help our wonderful town to thrive. “Santa Parade and Christmas in the Park” wouldn’t be the same without them. You know who you are, so please accept our thanks for your amazing support.

Thank you to everyone who took part in the parade, and came to the “Christmas in the Park” afterwards. The music, stalls and most importantly the families, after all, isn’t that what it’s all about? We are already looking forward and planning for next year’s Christmas in the Park and Santa Parade.

Get your whanau, your group/club, your business together to take part in next year’s event. It’s not too early to start planning now. We need you to help make it the success it has become.

Have a wonderful, safe festive season, enjoy the beaches and great BBQ weather. Merry Christmas from the Santa Parade and Christmas in the Park team.



## Coromandel Lions Club

Happy New Year from the Lions. See you all at the Keltic Fair.



## Opening on 3rd February 2021

Every Wednesday and Thursday 9am to 3pm  
45 Tiki Road, Coromandel Town

Christina Wu, ACC registered acupuncturist, Bachelor of Health Science (Acupuncture & Chinese Medicine), Taichi teacher, brings her caring and holistic approach to serve the Coromandel community.



Phone: 07 866 6663/ 021 113 4768  
or 07 866 8358 (Wed & Thu)

Email: christinawu121@gmail.com

Please visit  
[www.corocommunityacupuncture.co.nz](http://www.corocommunityacupuncture.co.nz)  
for opening specials

Beryl has been enjoying her garden since being in hospital and has sent in this poem.

## My Garden

By Beryl van Donk

The glories of the garden have always pleased me.  
The opening buds of Spring, a blossom covered lilac tree.  
Sweet fragrances of roses, ferns thrusting toward the sky.  
The soft notes of the bellbird, such beauty makes you sigh.  
There is no doubt in my mind that in my garden fair  
I know that God walks there with me  
I can see Him everywhere.

Poetry SPOT

## Coromandel Community Home Grown Market

Every Friday next to BNZ 8.30am-12.30pm.

We're here for the season offering you: Fresh organic veggies and seedlings, baking, home produce, crafts, natural remedies and treatments. Growing every week.

New stall holders welcome please contact Sabine (07) 866 8932 or 022 424 4163

### Himalaya shop : Colville

Hi Everyone, we hope you all had a good Christmas!

The Himalaya shop will be open 7 days a week during January.  
Our hours are 10 a.m. to between 4 and 5 p.m.  
We still have a good selection of summer clothes and giftware,  
so why not take a drive up the coast and have a browse!

contact us : A/H 07 8666 865, shop 07 8667 224  
Anette Mobile 021 139 7938, Rob 021 155 8559  
email [robnnet@yahoo.com](mailto:robnnet@yahoo.com)



## Summer music at Coroglen Tavern



### The Feelers

The Feelers and Elemeno P Summer Tour will be at the Coroglen Tavern on **Thursday 31 December**

New Zealand music legends The Feelers and Elemeno P are kicking off their three-date tour at The Coroglen Tavern this New Year's Eve. This incredible pairing will bring their much-loved hits for a guaranteed good time of nostalgic feel good summer fun. There is surely no better way to see in the new year than by singing classic Kiwi anthems.

Secure your tickets now at Eventfinda to book a new year you won't forget

### Trinity Roots

Trinity Roots with Special Guest Tiny Ruins (solo) will play at Coroglen Tavern, on **Wednesday 6 January**.

Aotearoa's finest indigenous reggae and slow burning funk group Trinity Roots take to the stage

as an extended line up consisting of a compact horn section, percussion, and additional vocalists. They are joined on all three shows by very special guest Tiny Ruins (solo).

Their vision is to take their well-loved and long cherished songs, intimate vocal harmonies, hypnotic grooves and dramatic moments that have become synonymous with the Trinity Roots "sound" over the last two decades and flesh them out into a panoramic musical experience.

These shows will be the first time the group have taken to the stage in over a year. This is your chance to see Trinity Roots like never before, with new arrangements and an extended band in a consciously curated performance.

The band believes when there is a sense of social cohesion, great things are achieved and felt. At the same time, Trinity Roots's music has always been about the journey.

For complete tour, ticket and VIP Experience information, visit: [www.trinityroots.co.nz](http://www.trinityroots.co.nz) and [www.livenation.co.nz](http://www.livenation.co.nz)



## The Outward Bound Activate course

Outward Bound is offering scholarships for people with a physical disability up for challenge and outdoor adventure.

The Outward Bound Activate course is an eight-day course designed for individuals aged 18 years and over with a physical disability.

Places are still available on the February 2021 course that is taking place at the Anakiwa school from **3-10 February**.

With the support of the Ministry of Social Development, funded places are available.

Applications close **Thursday 31 December 2020**.

For more information, please email Caroline Campbell, [ccampbell@outwardbound.co.nz](mailto:ccampbell@outwardbound.co.nz), or call 0800 688 927 or head to <https://www.outwardbound.co.nz/courses/activate/>.

## PRIVATE SALE • Picturesque Artist Retreat

**A one of a kind unique home in Coromandel Town set among wonderful landscaping and lush gardens including a pond and little native forest with kauri and rimu trees.**

Away from the world, offering privacy and inspiration. Built to catch sun all day around, with outdoor decking flowing from the living areas through four sets of French doors.

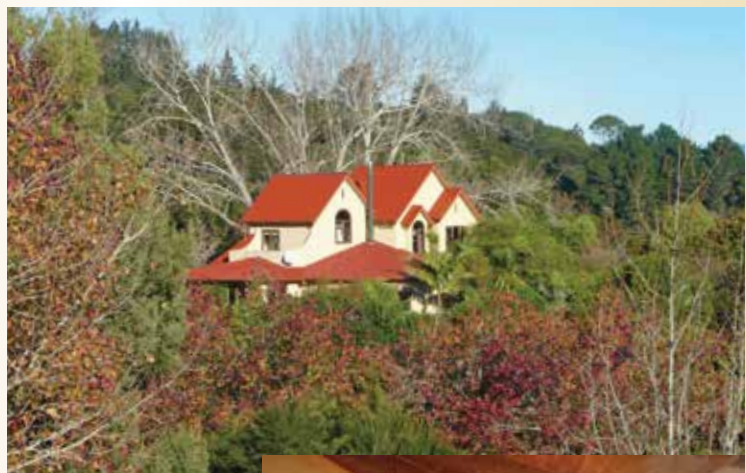
The house has wooden floors and cedar joinery throughout. The open plan living has a stunning high stud macrocarpa ceiling, there are lots of other interesting features in all areas of the house. The art gallery has its own entrance but could also be turned into an extra guest room.

The property is part of the Lindisfarne Community Trust.

Details and images via <http://homeonlindisfarne.weebly.com> and Trademe.

A home like this is a very rare find.

The property will be sold via private treaty.



**Viewing strictly by appointment only.**  
**Mob ph. 0224289934 or email [ericalyons1@gmail.com](mailto:ericalyons1@gmail.com)**

## Coromandel Budget Advisory Service

By Caroline Dunn

### Budget Advice

Hi all, welcome to 2021. We are hoping everyone had a lovely Christmas and a Happy New Year.

The start of a new year is always a good time to sit down and make yourself a budget and set some goals for the coming year. Some things – like Christmas – can seem a long way off, but we all know it approaches again quickly and a little saved each week can make a huge difference when the money is needed. Here at Budget, we have several tools which will help you to keep an eye on where the household money is going.

If you need assistance getting your finances in order or help with creditors, please make an appointment to see how we can help. We offer free, confidential and non-judgemental advice. Debt can be scary, especially if you have fallen behind in repayments. We can talk with creditors and help with getting things back on track. We want the people of our community to feel confident and in control of their finances.

To make an appointment come and see us at our office in Tiki House, located opposite the BP, or call us on (07) 866 8351.

Our office will be opening on **Tuesday 12 January**. Office hours for 2021 will be: Tuesday 9.30am-3pm, Wednesday 9.30am-3pm, Thursday 12pm-3pm.

**Foodbank**  
Welcome to 2021. Firstly we would like to say a massive thanks to the community for rallying around to support our Foodbank. We had a fabulous response to our Christmas hamper appeal. A huge thank you to the Coromandel Area School's



Student Volunteer Army and all of the locals who dropped off all of the wonderful gifts in our present box at BNZ. We were able to supply 22 Festive Hampers of food and gifts to clients. Thanks to all involved.

We are having a change of day for our food parcels this year. Our first food parcels for the year will be **Thursday 14 January**. If you're receiving a food parcel via the Foodbank, please remember to bring your own boxes/bags to collect your groceries.

Time slots in the pantry will need to be booked by contacting Coromandel Budget Advisory prior to midday Wednesday on (07) 866 8351 or 022 018 0849.

If you think you will need food parcel assistance over a couple of weeks, please make an appointment with one of our budgeting mentors.

With our new structure in the Foodbank, we no longer require jars and containers. We do however still need the 6- or 12-pack egg containers and would appreciate if you have any to please drop them to us at Tiki House.

### Community Garden

Well as any avid gardener would know, gardens do not take a Christmas break. They keep on growing and continue to need watering and weeding done. With the Foodbank having been closed over the Christmas break the Community Sharing Shelf has been kept well stocked and we hope that you have got yourself some fresh produce from there. The garden is looking fabulous and producing so much produce at present.

For 2021 we are also changing the volunteer morning to Thursdays in line with the Foodbank changes. If you would like to help, and are interested to see what we do, please come on down on a Thursday between 9am-11am and have a chat with Brooke.

If you are dropping produce off at the sharing shelf don't forget to pop it up on our Facebook page.

Happy New Year's from us all :-)

## Barry Brickell Play With Clay Day

Hauraki Reserve – Coromandel Town

**Saturday 30 January 10am-3pm.**

A fun day playing with clay, remembering Barry Brickell's contribution to Coromandel Town, will be held at Hauraki Reserve on **Saturday 30 January**. Everyone is welcome to join with artists and friends of Barry Brickell's to have fun with clay – make it and break it – learn on the potter's wheel – make tiles – use moulds – enjoy the music, the food – just come and make a mess with clay. Our sponsor, Driving Creek Railway and Pottery, will have bags of clay for sale for the serious potter and small bags for the learner. There will be potters' work for sale.

Bring the kids – kids bring your friends – have fun, fun, fun – see you there.

**JAMES & TURNER**

KITCHENWARE · PAINT

HARDWARE · GIFTWARE

FISHING · CAMPING

MARINE · GARDENING

PLUMBING · ELECTRICAL

James & Turner 2014 Ltd  
131 Kapanga Road  
P.O. Box 16  
Coromandel Town

Grant Webber  
Ph: 07 866 8805  
info@jamesandturner.co.nz  
search "James & Turner"

## Purnell

LAWYERS

### BRENDA FLAY, SOLICITOR:

Travels to Coromandel on Tuesdays.

Please phone the Thames Office (868 8680) for appointments.

**PARTNERS:** Hayley Green and Brenda Flay

**THAMES OFFICE:** 611 Mackay Street, P.O. Box 31, Thames

**PHONE:** 868 8680 **EMAIL:** info@purnell.nz

**COROMANDEL OFFICE:** Tiki House, Tiki Road

### OUR SERVICES

ESTATE PLANNING / PROPERTY / COMMERCIAL

www.purnell.nz

THAMES

WHITIANGA

COROMANDEL



## Special Adventures with Race for Life

Margaret Partridge, a Totara Hospice patient, is a positive and courageous 71-year-old lady who is suffering from chronic obstructive pulmonary disease.

This delightful lady is a loving mother to Kim and a caring grandma to her three children.

Kim has become the caregiver for her ill mother, and Margaret is forever grateful for this.

Margaret has approached Race4Life Trust with a final wish to spend some precious time with her loving family in Coromandel. She wants to watch the children have fun and share in their joy and say thank you to them all for caring for her so well.

The family came to Coromandel for four nights at the end of November/beginning of December. Kirsty from Abbey Court Motel and The Little Farm has gifted Margaret and her family accommodation; Tom and Lorraine from Coromandel Fishing Charters gifted a charter. Other sponsors who helped make this trip happen were The Waterworks, Driving Creek Railway, Top Pub, GO Rentals, Long Bay Motor Camp, Umu Cafe, Pepper Tree Restaurant and Coromandel Four Square.

This was a wonderful trip for Margaret and her family.

Race for Life also arranged a trip to Coromandel Town for an elderly gentlemen and his family in early November. Their accommodation was kindly supplied by Coromandel Seaview Motel Style B&B and did similar activities. This gentleman has sadly since passed away.



Margaret Partridge with her daughter and grandchildren

## MASSAGE THERAPY COROMANDEL



- ★ Deep Tissue Remedial Bodywork
- ★ Relaxation / Swedish massage
- ★ Lymphatic Drainage
- ★ Hot Stones Massage

**Lynley Ogilvie, RMT.**

Call for an appointment: (07) 8668684 or 021 866868



**Coromandel  
QUARRY &  
Contracting Ltd**

- All grades of metal delivered
- Driveways, roading, earthworks

**Telephone 07 866 8306**

email: richard@cqc.co.nz www.cqc.co.nz

## Healthy people Excellent care

*"Mehemea ka moemoeā ahau. Ko au anake.  
Mehemea ka moemoeā e tātou. Ka taea e tātou"*

*"If I am to dream. I dream alone.  
If we all dream together. Then we will achieve"*

– Te Puea Herangi



## Waikato District Health Board is looking for new Consumer Council members

- Are you passionate about people getting the best healthcare and achieving equity in our health system?
- Are you a good communicator and able to work positively in a group?
- Do you live in the Waikato?
- Have you (or a whānau member) had recent experience of our health services or are you actively engaged in a specific area of health?

Then you could be part of Waikato DHB's Consumer Council.

It is important that we have members with a range of experience who are familiar with our health system and have an interest in supporting our work to improve the care and experience of all service users.

We also want to ensure that our council members represent the populations we serve with strong representation from Māori, Pasifika, and older adult communities.

Support is available to ensure there is no financial barrier to participation. Members will be paid for meeting attendance and travel costs are reimbursed.

The Consumer Council works in partnership with the DHB to provide a consumer perspective, help shape health services and ensure we meet the needs of our community. *People at heart – Te iwi ngākaunui.*

Expressions  
of interest  
close  
15 January  
2021

For more information and to fill out an expression of interest, please contact  
[consumercouncil@waikatodhb.health.nz](mailto:consumercouncil@waikatodhb.health.nz)



**Waikato** District Health Board





### *THE JEWEL IN THE CROWN*

Tender closes: 12<sup>th</sup> February 2021 at 4.00pm - Richardsons Real Estate Limited, 151 Kapanga Road, Coromandel



*New Listing*



\* This possibly is a once in a life time opportunity to secure one of the most admired farms in Coromandel Town! The property comprises 35.5314ha. (more or less) in wonderful easy to rolling pasture, with large trees peppering the landscape. 3 brm, 2 bathroom residence, double garage with studio, imp shed/hay barn, stock yards. PERFECT!!! **TENDER**



*New Listing*



\* A truly magnificent property set atop the exclusive Wyuna Bay ridgeline, with commanding Hauraki Gulf, island, harbour and range vistas. The contemporary aesthetic design ensues a superb laid back atmosphere. Stunning open-plan living, media room, 3 brms, 2 bathrooms, extensive vehicle/boat garaging. An amazing property you'd be proud to own. **\$PBN**



*New Listing*

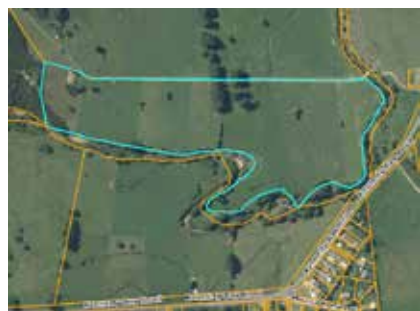
\* There are only a handful of vacant sections remaining along the Wyuna Bay peninsula and, this superbly private property of 3,301m2 will enchant your senses, as to the style of home that will perfectly meld into the bush surrounds. **\$795,000**



*New Listing*



\* OMG... would you LOOK at that AMAZING view!!! Set high on the ridgeline above Tuatawa, this exceedingly private 3,291m2 bush property is glamping at its very best. Come and be one with the birdlife and absorb those views. **\$560,000**



*New Listing*

\* Is it time to move to greener pastures? This 8.8ha. block is situated in Kennedy Bay and, offers a stream boundary, flat paddocks, troughs and established fencing to make any farmer or lifestyle enthusiast happy. Please call us to view. **\$500,000**



*New Listing*



\* Wyuna Bay is one of the most sort after locations around Coromandel Town. The views from this home are absolutely stunning! Open-plan living, 3 bedrooms, 2 bathrooms, superb decking front & rear. Most definitely the WOW factor. **\$PBN**



# /Richardsons

Real Estate Ltd MREINZ / Coromandel  
Licensed REAA2008



[www.richardsons.co.nz](http://www.richardsons.co.nz)

151 Kapanga Road, Coromandel

Ph: 07 866 8900 ~ Kim 021 533174

Robyn 021 448975 & Melissa 027 2498287

Rental Manager ~ Laurie-Ann 027 9276368



*New Listing*

\* Do you have the perfect house plan, but haven't found the perfect piece of land? This prime waterfront section of 4,519m2 (more or less) within an easy walk of the township is just the one for you! (Subject to issue of new Title). **\$585,000**



*New Listing*

\* Delight in the immaculate presentation of this wonderfully positioned 599m2 property in 'Greenhills'. The 6 year old home features spacious open-plan living, 3 dble brms (master en-suite), guest bathroom and 2 private decks. **\$790,000**



*New Listing*

\* Lot 1 within a 3 lot boutique subdivision on Whangapoua Road. An immaculately presented section of 1,020m2 (more or less) with great fencing, services and excellent farmland and the range views. (Subject to issue of new Title). **\$385,000**



*New Listing*

\* Lot 2 within the new Whangapoua Road subdivision. Design your new home to take full advantage of the northerly aspect. The well fenced 990m2 (more or less) section will be a delight to landscape. (Subject to issue of new Title). **\$380,000**



*New Listing*

\* Lot 3, the excellent semi-rural setting of this superb 970m2 (more or less) section is within an easy walk of town, so you will enjoy the benefits of both. Get your architect or builder to start designing. (Subject to issue of new Title). **\$385,000**



*New Listing*

\* Location is the key! This superbly positioned north/west facing section of 1,522m2 (more or less) is set within the Koromiko Drive subdivision, thus an easy walk or bike ride into town. (Subject to issue of new Title). **\$395,000 (Under Offer)**



*Private Haven*

\* A WONDERFUL natural sanctuary. Approx 1.43ha featuring landscaped gardens, ponds and a small paddock. Very private 3 brm home with superb decking. (Secured via a Licence to Occupy Agreement in the 'Lindisfarne' community). **\$735,000**

## 7 SALES last month



**More listings urgently required by a great team who are achieving great results...**



**Lacuna Arts Therapy**

By Rei

Kia ora Coromandel Community.

It is with joy I share that I have moved my arts therapy practice, Lacuna Arts Therapy, into Coromandel Town, and have spaces free for new clients to explore their creativity and their unconscious, unspoken worlds together through this safe, playful, mindful and relaxing practice.

Arts therapy is a form of psychotherapy that uses artmaking in its many forms to communicate unspoken inner messages. It is based on the belief that the process of engaging creatively in drama, dance/movement or visual art-making within a therapeutic relationship can help us to access our deeper unconscious thoughts and feelings and to express them visibly without words. The emphasis is on the process of creating and making meaning rather than on producing something perfect or beautiful, so no skill is required. All that's needed is an interest in exploring your creative side, a curiosity to find out more about yourself and permission to let your inner child play. There is no wrong way to do his process!

Sessions cost \$90 for one hour, advanced booking is necessary, and all ages welcome! You can find out more via email [lacunaartstherapy@gmail.com](mailto:lacunaartstherapy@gmail.com) or call

me on 022 300 2515 (please leave a message if I'm not available).

Nga mihi.

**Plant-Based Eating Group**

By Nalan Kirsch

First of all, thank you for your interest in our plant-based eating workshop. In 2020, we had to postpone the workshop twice due to Covid-19. I hope the new year will bring healing, recovery and stability into the world.

While I'm writing this article, summer has arrived early. It is almost like in the Mediterranean – hot summer, no rain. Our garden has started producing beans, cucumbers and zucchinis. Tomatoes already have fruit on them. I expect a good tomato crop this summer.

Since tomatoes are cheap and plenty, I would like to share a few of my favourite ways of using them. Tomatoes are delicious as they are, but it's nice to enhance their flavour by just adding some simple ingredients.

**Spanish tomato bread**

This is a Catalan recipe. My family loves it. You need a few slices of bread – sourdough or white bread with crust, ripe tomatoes, a clove of garlic, olive oil and salt. First, toast or grill bread slices. Then, rub one side of the bread with garlic. Halve the tomatoes and then rub and smash them on the side that you rubbed garlic; discard skin (or thinly slice skinned tomatoes). Drizzle with olive oil and sprinkle with salt.

**Shepherd's salad**

This is my go-to lunch in summer. You need 2-3 tomatoes (an heirloom variety is the best), small onion, cucumber, green capsicum, chopped parsley, olives, olive oil, dash of lemon juice or balsamic vinegar, salt. Cut all the vegetables in the size that you like. In a bowl, gently mix all the ingredients. Dig in with your choice of bread :-)

**Simple tomato sauce – cooked version**

For 2-3 people. Skin 5-6 tomatoes and finely chop. Or use one tomato tin. In a small saucepan, add chopped tomatoes, olive oil, salt and pepper, a large clove of grated garlic. Simmer for 5-10 mins. Add chopped thyme and turn off heat. You don't need to cook fresh tomatoes too long. Ready!

**Tomato sauce – raw version**

For 2-3 people. Cut 4-5 large tomatoes in cubes. Place in a bowl. Add generous olive oil, a clove of grated garlic, chopped basil, salt and a sprinkle of chilli flakes. Gently mix. You can also turn it into Mexican tomato salsa by adding chopped onions, lime juice and fresh coriander. Eat straight. It is great with wraps, pasta and grilled vegetables.

**Preserved tomato sauce**

Sterilize clean jars by boiling in saucepan for 15-20 min. Drain and oven dry. Double the recipe of cooked version of tomato sauce. When still hot pour into jars. Put the lids on and tighten, then leave them upside down for a while to ensure there are no leaks. Then turn them back up. They will seal in a few hours. Keeps well.

I hope you enjoy these simple recipes. If you would like to be part of the plant-based eating group and workshop initiative, please get in touch on 021 515 707.

Happy New Year!

## THE BIZARRE

### COROMANDEL RESALE SHOP

## COMMUNITY GRANTS SCHEME

## APPLICATIONS OPENING FEBRUARY 2021!

A COMMUNITY GRANTS SCHEME FOR PROJECTS AND ACTIVITIES THAT BENEFIT THE SOCIAL, CULTURAL, AND ENVIRONMENTAL WELL-BEING OF PEOPLE IN OUR COMMUNITIES.

SUPPORTED BY PROCEEDS FROM THE BIZARRE - COROMANDEL RESALE SHOP.

THANK YOU TO EVERYONE WHO DONATES TO THE BIZARRE, EVERYONE WHO SHOPS THERE AND THE VOLUNTEERS THAT KEEP THE SHOP THRIVING!

FOR MORE INFO HEAD TO OUR WEBSITE: **CILT.ORG.NZ/GRANTS**

**Rethink Rubbish**

Come and see us at the Keltic Fair on **2 January**.

**We will be:**

- providing free water to refill your bottles;
- selling our reusable glass cups for only \$15;
- answering your questions about how to rethink rubbish.

Bring your own reusable containers, plates, cups, or bottles and you might win a prize.



## SCOTT REVELL

### BUILDING CONTRACTOR



- New Homes
- Renovations
- Additions \ Repairs
- Bathrooms
- Decks \ Fences \ Landscaping

**Prompt Professional Service**

[srevell2010@hotmail.co.nz](mailto:srevell2010@hotmail.co.nz)

**027 861 6592**

COROMANDEL



## Patchwork & Quilters

By Bev Mayhead

Well hello everyone and a very big welcome to 2021!

This New Year will be just super and we deserve it.

We celebrated our last Patchwork Day in December with our usual morning activities, closely followed by an amazing Christmas Dinner at lunchtime.

Many thanks to Ursula Walsh once again for her beautiful table setting for 27

seated guests. It is awesome to have such a keen lover of "anything Christmassy" in our group. Ursula really excels at her talent.

We usually have a shared Christmas Gift game and this year it was decided to change the game to a new one...well, wasn't that interesting and after quite some time we had our winners. It is great to have some fun and not just hand out a gift...we really do have to work for it!

The Mystery Quilt for 2020 has finished and our photo this month shows the first one that I have seen completed. This Japanese Dolls pattern is available online by Gourmet Quilter. 14 members of our group have this quilt in various stages of completion, and it is quite lovely.

Our first meeting will be held on **1 February** followed by our AGM on **15 February**. I am stepping down as a committee member of several years to allow others to come forth with new energy and new ideas... which is always welcome. I haven't managed to get anyone to take over the regular Chronicle article yet though!

So this is a whole New Year; please call in and see what we are up to. Morning tea is at 10am. Perhaps you will join us in 2021.

Our meetings are held on the 1st and 3rd Mondays of the month 9.30am-3.30pm at St John Room, Tiki Road, Coromandel. President Raewyn Penrose (07) 866 8880, Secretary Sharon Currie (07) 866 8762



Mystery Quilt made by Judy Russell, Japanese Dolls

## Te Korowai Hauora o Hauraki Coromandel Whānau Health Clinic

**Open Mon - Fri: 8.30am - 5pm**

Te Korowai Hauora o Hauraki Coromandel Whānau Health Clinic will be closed on **Friday, January 1** and **Monday, January 4.**

## BE SUNSMART THIS SUMMER

Protect yourself from the sun and check your skin regularly for any changes to spots or moles

**See your GP if you notice any of these changes to a spot or mole:**

- A change in colour, size or shape
- It is itchy or bleeding
- It looks different to other spots
- It has become raised and looks shiny
- It appears quickly
- It is new

## Clinic Fees

### GP

Under 18s - **FREE** \*  
18-64 years - \$18.00  
65 + years - \$12.00

### FREE

Under-25s sexual health checks

### NP

Under 18s - **FREE** \*  
18-64 years - \$18.00  
65 + years - \$12.00

### NURSE

Under 18s - **FREE**  
18 + years - \$12.00

\*clinic fees for enrolled patients

## COMING UP

**Foot Clinic**  
January 12

with Ruth Wells



**Rongōa clinic**

with Jo Shelford  
January 28

**Dietitian**  
Claire Cannon  
February 3



## Alpha Drywall

Fix, Stop,  
Cove & Paint  
since 1986



- Plasterboard Fixing, Stopping and Painting specialists
- All grades of stopping including Fibrous, Cove and GibBoard
- We specialise in wallpaper to paint finish upgrades
- Professional, reliable, quality service
- Free quotes

Phone Geoff 022 027 0290  
PO Box 177, Coromandel

Email alphadry@gmail.com  
AWCI (licenced trademan)

# CORO GYM

COROGYM@GMAIL.COM



**Mō tātou o Hauraki**

Affordable medical & wellness services for everyone in our community



225 Kapanga Road,  
Coromandel 3506  
Ph: (inc a/h): 07 866 8084  
E: coromandel@korowai.co.nz  
www.korowai.co.nz

## Coromandel Town Information Centre

By Sandra Wilson, Manager

Merry New Year everyone.

I can now advise that our Art Auction/Exhibition fundraiser raised a whopping \$4,000 for the centre. This was a much needed boost to our operating costs. A very big thank you to my team, the artists who donated work for the action and all of you who came and supported our event and had a wonderful time. Just a heads up to you all that we will have another one in November 2021.

We also had some fabulous raffles which came about from the generosity of our local business owners, so to you all a big thank you.

Our new website is active. You can still join our text messaging service to find out what's on, roading issues, water cutoffs, etc. We can book you on the ferry, InterCity and also going south across the strait. We can book your friends and family on the train, to The Waterworks, fishing charters, tours, etc. This all helps keep the Information Centre going.

Remember the Museum is open every day from 1.00pm – 4.00pm. Tickets are available from the Info Centre. The cost is \$5 per adult, children free.

Santa Parade was great. If you want to see more floats, get together with your whanau, your work colleagues, your interest group and be part of it next December.

Seafood Fest is on **Saturday 1 May**, 9.00am, Coromandel Area School grounds. Those interested in having a stall should contact Gail on 027 466 5131.

We can help promote your business or community group. Come and talk to us. The info centre is here to help promote your events, fundraisers, ticket sales and your business. We receive a lot of calls around markets, when are they open, whom do I speak to about having a space. Can the person/s responsible for these please make contact with us so we are better versed to help with these enquiries?

Thinking about volunteering? Keep an eye out for our open day where you can come and talk to our volunteers and find out what it's all about. Also applications are open for another tour guide. If this is you, then pop in and see me.

Until next month, take care of each other.

Phone: (07) 866 8598 or 027 521 5560. Open 7 days a week: Sun - Friday 10.00am-4.15pm, Saturday 10.00am-4.30pm. Follow us on Facebook: Coromandel Town. Website: [www.coromandeltown.nz](http://www.coromandeltown.nz). 74 Kapanga Road



## Welcome to Coromandel Bike Park

By Ally Davey

The Spirit of Coromandel Trust and Ride Coromandel are thrilled to invite all residents and visitors to Coromandel Town to experience the new Bike Park on Hauraki Road. The Pump Track and Gravity Descent Trails were launched with an open day on 20 December in time for a fun-filled summer holiday on your bike.

Our Descent Trails are making great use of a capped landfill site and there are three grades of difficulty so you can advance your skills. The grade two track is flowing with fast rollers. The grade three track has table top jumps and is challenging. The grade four track is a serious jumps trail with lots of air time, whips and fins. Be sure to ride to your ability on these trails and familiarise yourself with the jumps before taking them at speed. The road allows pedalling access to the top of the trails with the least amount of effort.

Have fun and be safe! Only ride down the trails so we avoid collisions, and please don't stand on the backs of the berms/jumps as the tracks are not packed in yet (they need lots of riding) and standing on them.

The Pump Track has already proved a hit with locals and even Koru the Kiwi has been seen hopping on a bike and taking a ride. Check out the Ride Coromandel Facebook page to see what's been happening on the track. A word of warning – the Pump Track can bite! Always wear a safety helmet. It has already taken some skin (and teeth), so protective clothing and pads are a good idea. A reminder that no scooters or bikes with pegs are allowed on the pump track as they can ruin the asphalt surface. Lots of effort has gone into constructing this world class Velosolutions Pump Track and we want to keep it in great condition for everyone to enjoy.

The next stage of construction will be the cross-country trails, due to begin building in Feb 2021. We are busy designing kauri dieback wash stations for your bikes to protect the planted and regenerating kauri in this area. When you come, be sure to keep your bike clean as this will help us protect our precious kauri.

### Your bike park needs you!

We are now at the stage where we hope to form a Bike Club to help organise the care and maintenance of this magnificent facility. If you've got enthusiasm and are keen to help create a community organisation that can look after the Bike Park, we want to know. Please get in touch with us via the website [www.ridecoromandel.com](http://www.ridecoromandel.com) or @ridecoromandel.



Both photos are of the jumps tracks being ridden by Trail Pro's track builder Jonty Vink

## LK & JA GORDGE BRICK & BLOCK LAYERS

0274 949 573

07 866 8200

Laurie Gorge

Buddy10@xtra.co.nz

I have pride in producing work of high quality in a professional manner

Licensed Building Practitioner

PHONE NOW FOR:  
BRICK AND BLOCK LAYING  
CONCRETE REINSTATEMENT  
STONE WORK  
COBBLE LAYING  
FOOTINGS  
MAINTENANCE WORK  
FIREPLACES  
LETTERBOXES  
FENCING

**CAPE CIVIL**  
EARTHWORKS & CONSTRUCTION

Call now on 027 250 5076 or 027 365 8520  
for a free no obligation quote.  
[capecivilcoromandel@gmail.com](mailto:capecivilcoromandel@gmail.com)

• Metal Deliveries • Truck & Digger Hire • Driveways & Roding • Retaining/Gabion Walls • Subdivisions • Civil Works



# Happy New Year

from Thames-Coromandel District Council



January, 2021

## Have your say on our Freedom Camping Bylaw review

Our Freedom Camping Bylaw is being reviewed and we want your thoughts about a few changes we're proposing to some of the current sites and the addition of one new site.

Our consultation is running from 11 December to 2 February 2021.

"We've found that some of our designated freedom camping sites are promoted as places to camp and are becoming overpopulated," says our Mayor Sandra Goudie. "So where we can, we're looking to increase space at some of these designated areas, such as Danby Field in Thames. Or, in a couple of sites we're shifting the designated freedom camping parks just a bit to a more suitable spot," our Mayor says. "We're also suggesting a revamp of all



[tcdc.govt.nz/freedomcampingreview](http://tcdc.govt.nz/freedomcampingreview)

the signage around the district and more emphasis on promotion and education around responsible camping, to help people do the right thing," Mayor Sandra says.

To read the full proposals and to have your say online, go to [tcdc.govt.nz/freedomcampingreview](http://tcdc.govt.nz/freedomcampingreview)

Or, pick up a submission form from one of our Council service centres.

For Council Christmas hours visit [tcdc.govt.nz/contact](http://tcdc.govt.nz/contact)

## REMEMBER, EVERY DROP COUNTS

Water is a precious commodity and we're trying to raise awareness now about demand and supply, and managing this over the peak summer period.

Water restriction updates will be shared on our Council communication channels. See our website for more information [tcdc.govt.nz/waterrestrictions](http://tcdc.govt.nz/waterrestrictions)

### WATER RESTRICTIONS ARE IN PLACE






[TDC.GOV.TZ/WATERRESTRICTIONS](http://TDC.GOV.TZ/WATERRESTRICTIONS)

## Kerbside Summer Collection

Our summer Kerbside collection service begins 26 December 2020 and ends 30 January 2021. Collections **are not** delayed after public holidays during this period.

[tcdc.govt.nz/kerbside](http://tcdc.govt.nz/kerbside)

Coromandel Rural North	Coromandel Town & Te Kouma
Tuesday 	Wednesday 
Friday 	

We are now only collecting plastic types 1 and 2 for recycling. Plus tins, paper and cardboard as usual. Bags hung from trees or poles, or left in a cage, will not be collected.



Our Refuse Transfer stations are open to extended hours from 14 December to 21 February 2021. Hours and locations:

[tcdc.govt.nz/rt](http://tcdc.govt.nz/rt)

## EVERYTHING YOU NEED TO KNOW THIS SUMMER

If you're visiting the Coromandel these summer holidays we have put everything you need to know about our services all on one page. [tcdc.govt.nz/summerinfo](http://tcdc.govt.nz/summerinfo)

## FIRE RESTRICTIONS

[fireandemergency.nz](http://fireandemergency.nz)



## ALCOHOL BANS

[tcdc.govt.nz/alcoholcontrol](http://tcdc.govt.nz/alcoholcontrol)



## DOG RULES



[tcdc.govt.nz/dogrules](http://tcdc.govt.nz/dogrules)

## Coromandel - Colville Community Board UPDATE

### A word from our Board Chairperson Peter Pritchard

"I am pleased to see the Ride Coromandel Bike Park has been officially opened, what a fantastic facility for the community. Happy New Year from the Coromandel-Colville Community Board. Please stay safe on our roads and the water, and enjoy your summer in this beautiful little part of the world."

[peter.pritchard@council.tcdc.govt.nz](mailto:peter.pritchard@council.tcdc.govt.nz)



### Tekoteko Memorial Reserve

The tekoteko (pictured) out the front of the Coromandel Town service centre have had a makeover to freshen up their look.



Get our free eNewsletters!  
[www.tcdc.govt.nz/subscribe](http://www.tcdc.govt.nz/subscribe)



[www.facebook.com/ThamesCoromandelDistrictCouncil](http://www.facebook.com/ThamesCoromandelDistrictCouncil)

[www.coromandel.govt.nz](http://www.coromandel.govt.nz)

customer.services@tcdc.govt.nz  
Private Bag, 515 Mackay St, Thames  
Phone: 07 868 0200

TDC/2050

## Grey Power Coromandel

By John Rabarts, President.

Next Grey Power meeting will be mid-February, The date will be in the February Coromandel Town Chronicle.

### Pest Control

**Rabbits** – No matter how much the grandchildren like to watch them, rabbits can do a lot of damage in the garden, especially to new plantings of lettuce, sweet corn, broccoli and cabbage. To keep rabbits at bay spread bicarbonate of soda around the gardens. Snails and slugs – They love to feed on new seedlings and growing plants of vegetables and flowers. If you are putting out bicarb for rabbits, spread a bit more for the snails and slugs. **Fleas** – They gather in lawns and odd corners around your grounds, laying in wait for unsuspecting dogs, cats and guinea pigs. Spread bicarbonate of soda where your pets lie down in the sun where the fleas gather. Also sprinkle bicarb over your pets and leave them outside. The fleas will drop off them on the grass or where your pets are digging their favourite garden holes for bones or to leave their natural fertilizer. Pete says, “Yuck is what you want fleas to think when they bite into your pet cat, dog or iguana.” One way to put the fleas off is to put a sprinkle of brewer’s yeast or garlic salt or powder on their food. Most pets don’t mind the taste and the fleas will soon go off the taste of garlic flavoured pets. **Ants** – If you have been carefully reading this column for the last two years and so many ways to get rid of ants we have printed, you shouldn’t have any ants now. However, a reader tipped me off that the corners of the grandchildren’s sandpit was teeming with a zillion ants on the last family visit, but a whole small tub of bicarb spread in the sandpit sent them scurrying off and kept them away for the next visit.

### Sciatica and back care

For sciatica pain try this stretch. Stand with your feet apart and hands on your buttocks. Push your hips forward and gently bend backward while looking up. Keep your knees straight, hold several seconds, relax and repeat. Even after your back feels better you will need to be



careful when you lift things if you want to prevent a relapse. Whether you are lifting a laundry basket, a toolbox or a bag of cement, crouch with your knees bent and your back straight so you can bring the object close to your body. If you have to twist, bend forward, or reach out for an object, take the time to get in a better position before you try lifting it. – Dr A A White. Orthopaedic surgeon.

### Aging eyes

Part of the problem of aging eyes is that the lens of the eye becomes less flexible. If you exercise the muscles that control the shape of the lens, it may be possible to delay near-point fuzziness to some degree. To keep your eye muscles fully flexed, hold out your thumb at arm’s length. Move it in circles then in figure eights, closer and further away. Follow it with your eyes. This keeps the fine motor system of your eyes in working order. – Dr Bruce Rosenthal O.D. New York, USA. Note: I haven’t tried this one for long so please let me know if you think this works. J R.

Coromandel Grey Power Membership is \$15 single member, \$28 for two at the same address. Phone Carol Carson (07) 866 7172 to join. John Rabarts President email:- john.rabarts@gmail.com



## Coromandel Garden Circle

December has been an eventful month, with the making of tussie mussies, Christmas float, Christmas parade and our meeting.

A busy morning on the Friday before the Christmas Parade with a group of wonderful ladies from the Club making tussie mussies – small bunches of flowers to be handed out at the Christmas parade.

Again on the Saturday morning, a group of dedicated ladies helped with dressing the float and then attended the Christmas Parade dressed as pirates (arr, arr, arr!!) handing out the tussie mussies. The float was so well presented that the Club won first prize! Thanks to the guys for setting up the float that the ladies dressed with flowers and greenery.

39 members plus three guests met at the Coromandel Club on the second Wednesday of the month for a potluck finger food luncheon.

We had a presentation from Jill Rabarts with the making of Christmas trees out of old Reader’s Digest books, or books with strong pages. Jill folded pages in the books and then glued two books together before spraying with red, gold, green or silver. Once the spray dried, she then dressed the trees with Christmassy items – stars, etc. Excellent gift and recycling of old books!

During the meeting we had a Bollywood Corowood Dance Group. Rada and Sisi made up and dressed a group of ladies in saris before leading them in a very entertaining show!

The meeting ended with a Secret Santa bottle gift. Merry Christmas everyone!

Next meeting will be **Wednesday 10 February**.

Convenor of the Circle is Jeni Mudgway – 021 0227 5341

## Barry Brickell Play With Clay Day

### HAURAKI HOUSE GROUNDS

**Saturday 30th January 2021 · 10am to 3pm**

Come along and have fun with local clay with help from top local clay artists and keep alive the memory of Barry Brickell and his contribution to our town.

Try your hand on a potters wheel, use moulds or free form your ideas.

This is a free event open to everyone and includes live music on the Barry Brickell stage.

Supported by Creative Communities



## Coromandel Garage Ltd

What we offer:

- Service and repairs on all makes and models
- WOF’s
- Motorcycle WOF’s
- Pensioner WOF’s \$50

**226 Wharf Rd, Coromandel. 07 866 8736**

- Call out’s & tow in’s
- LPG bottle swap & filling
- Car & trailer hire
- All tyres
- Fuel



gasoline alley services

Proprietor: Darius Visser



## The Coromandel Workers Council

By Benjamin Rudolph

The Coromandel Workers Council has been set up with the belief that everyone should have access to information about their rights as workers. With that in mind we want to help both employees and employers form strong and sustainable relationships that benefit everyone.

One of the questions that we seem to be getting a lot is, "Am I a contractor or am I an employee?" It's important to note that there are some major differences between a contractor and an employee. Those differences, determined by the nature of the working relationship, affect the rights and obligations of the business and the worker.

There are a number of legal tests developed by the courts which can help you determine if you are a contractor or an employee:

### Intention

- The intention test is relevant but does not determine the nature of the working relationship on its own.
- Employees must have an employment agreement in writing.
- Contractors have a contract for services with a business.
- Employees must be paid holiday pay, whereas a contractor does not.
- Employees are entitled to time-and-a-half

pay and a day in lieu for working a public holiday. Contractors are not unless otherwise agreed.

### Control versus Independence

The greater the control exercised over a worker's work content, the more likely it is that they are an employee.

- Employees have little to no control over the work to be done.
- Contractors have more discretion over how much time is spent at work.
- Employees usually work set hours.
- Contractors generally have more control over their own availability and generally do not require supervision.

### Integration

Is the work being performed integral to the employer's business? Usually work carried out by a contractor is only an accessory to the business. A person is likely to be considered an employee if the work is typically done by employees, is continuous (i.e., not a one-off project) and is for the benefit of the business.

- Employees will have all tools and equipment provided.
- Employees must be paid at least minimum wage. A contractor can be paid whatever rate is agreed to.
- Employees have all of their tax and ACC obligations paid for by the employer.
- Employees are entitled to a minimum of 3% of their gross earnings paid into their Kiwisaver by their employer.
- Contractors may offer their services to multiple principals at the same time.

- Contractors carry financial risk and may give guarantees to cover breaches of their obligations.
- Contractors usually issue invoices setting out their fees or charges in order to get paid. Employees usually receive a payslip. You may be asking, "Why do I need to know the difference?"

**Employers:** If you hire someone as a contractor when they are actually an employee, you may later be held liable for extra costs including unpaid PAYE tax, unpaid minimum wage, holidays, leave and Kiwisaver entitlements. You may also be at risk of receiving penalties from IRD and/or the ERA.

**Employees:** If you are hired as a contractor incorrectly rather than as an employee, then you may miss out on your minimum employment rights and your Kiwisaver employer subsidy, plus you may end up paying tax and ACC levies that you didn't have to.

If you need help determining your work status, get in touch.

The Coromandel Workers Council will be holding a public event on **27 January** at the Citizens' Hall aimed at introducing ourselves and the services that we provide to both employees and employers.

For more details please visit [www.cwc.org.nz](http://www.cwc.org.nz).  
Email [tautoko@cwc.org.nz](mailto:tautoko@cwc.org.nz) or call 027 296 5276

Everyone knows the best place to go fishing is near a mussel farm. Please follow these guidelines to keep everyone safe.

- ↔ **Keep 30 meters** from working mussel barges at all times
- ⛔ **Don't tie-up** to a line being worked on
- 🪝 **Never cast your line** towards a mussel barge – farmers have been injured from flying hooks and sinkers
- ⚓ **No Anchors.** Tie-on to a longline buoy or use approved mooring hooks
- 🚤 **Minimise** your speed and wake
- 🚚 **Never drive across the lines**



[www.coromf.co.nz](http://www.coromf.co.nz)

GIVE A LITTLE SUNDAYS



**\$10 PIZZA SUNDAYS**

**\$20 4 BOTTLES OF BEER**

Heineken, Heineken 0%, Tiger, Sol, Xport Citrus, Xport 33

**\$1 from every pizza is donated to a local community service.**

**ALL DAY EVERY SUNDAY  
DINE IN ONLY**

  
**STAR & GARTER  
HOTEL**  
Coromandel Town

CONDITIONS APPLY

## St John Heartbeat

By Teri & Neil

Congratulations and well done to several of our local team receiving their St John Long Service Awards at a formal ceremony held at the United Parish in Thames on Sunday 12 December. Sharmayne Novis (10 year Service Medal), Neil Robins (15 year Service Bar) and Peter McNae (25 year Service Bar) received their awards on the day, along with a large number of Hauraki/Coromandel staff. Thank you for your commitment to serving our community

### Flag is out: shop is open

Our Coromandel/Colville Area Committee Pop Up Shop trial was a huge success. We are very grateful to the Mercury Bay Area Committee and their St John Retail Shop for all of the goods they donated to help us get set up. Thank you to everyone for supporting this by giving items to sell or who came in to grab a bargain. We had so much positive feedback that we have decided to run it two days a week over the summer period until the end of January. If you see the flag out, we are open! By the time you are reading this we will have the days sorted and information will be put on the local Facebook pages to keep the community up to date.

Finally we would like to send everyone our best wishes for the festive season. We will all be working through as usual. After the unusual year that 2020 has been, it will be an interesting summer period as overseas travellers give way to travellers of a more local nature. We do expect the area to still be very busy.

Thank you all for your support throughout the year and we look forward to the challenges and changes that 2021 may bring.

Teri, Neil, Wendy and all of our team of talented and dedicated volunteers in Coromandel and Colville

Ph: (07) 866 8279 leave a message and we will get back to you.  
Email: station38@stjohn.org.nz



Sharmayne Novis (Colville) and Neil Robins (Coromandel) with St John Patron Richard Blundell

## Coromandel Seasonal Markets

By Benni, Nalan, Bine

We have had a very positive response to the Seasonal Markets concept. Thank you so much to everyone who responded!

At the time of writing, half of the available spaces have been booked already for the very first Summer Market. If you'd like to join and are interested in having a stall, please contact us A.S.A.P. to secure your space! We can provide tables and gazebos. We'll also have a commission table where we'll sell produce or craft on behalf. Get in touch with our team for more information.

This Summer Market will feature fresh local and spray-free produce, Indian food, hemp products, baked goods and sushi, native plants, crafts and gifts, henna tattoo, massage, acoustic music from talented local artists, a kids' art and craft table, plus more!

Come along and celebrate the summer, check out the stalls and enjoy the festivity. It is a wonderful way to support local growers, producers and artists, and have a good time.

Finally, we would like to thank Hike & Bike for providing the lovely square outside their shop.

For more information, contact us via email [coromandelmarket@gmail.com](mailto:coromandelmarket@gmail.com) or simply in person.

Happy Holidays, and hope to see you all there!

### Save the date

**Saturday 16 January** 8am-2pm,  
E-Bike Square, Wharf Rd, Coromandel.



## Direct Cremations



simple modern personal

*'A local cremation with exceptional care'*

- One off Professional Funeral Director's Fee
  - Basic Cremation Casket
  - Cremation Fee (Thames)
- All necessary paperwork and Death Registration.

Within 15kms of Thames - \$2450 GST incl.

Transfer from Whangamata, Tairua, Whitianga, Waihi, Paereoa, Ngatea and Coromandel - \$2700 GST incl.

Transfer from North of Coromandel - \$2750 GST incl.

07 868 6003 | [www.twentymans.co.nz](http://www.twentymans.co.nz)

**TWENTYMANS**  
FUNERAL DIRECTORS

## JOHNSTON FENCING

PHONE ROSS  
021 395 900

**WANT**  
NATIVE NURSERY & EDIBLES  
WAITAIA RD, KUAOTUNU

A wide range of beautiful natives, palms and fruit trees. Potting mix, compost, mulch, chook manure.

**Bulk compost and mulch available.**

Open Thursday- Sunday 8.30-4.30 or by phone appointment.

Closed for holiday 8th February to 4th March

Please phone Colin Hill 07 869 5910



## Library News

by Robynne Jones

Our new books for this month, include some of the old favourites like Di Morrissey – *Before the Storm*, Chris Ryan – *Zero 22*, John Grisham – *Trust*, Jane Harper – *The Survivors*, Robert Harris – *V2*, Alice Hoffman – *Magic Lessons*, Alexander McCall Smith – *How to Raise an Elephant*, Louise Penny – *All the Devils are Here*, James Patterson – *The Coast to Coast Murders*, Peter Watt – *The Queen's Captain*, and the sequel to the fantasy series *Skyward* by Brandon Sanderson – *Starsight*.

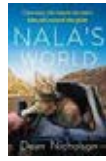
In addition, we have a lot more Clive Cussler novels, thanks to one of our members who is a fan. Thanks Tim, and thank you to everyone who has donated books to us over the year. Some have made great additions to our collection and some have helped our fundraising book sales over the year, helping us to buy more books for the Library.

Some of the new authors on the shelf this month include: Lauren Beukes – *Afterland*, Becky Manawatu – *Aue*, Catherine Chidgey – *Remote Sympathy*, Lana Korchik – *Sisters of War*, Max Seeck – *The Witch Hunter*, Shona Riddell – *Guiding Lights* and Ghazaleh Golbakhsh – *Girl from Revolution Road*. We have also included a new fantasy author, Andrea Stewart who has released the first book of a series called *Bone Shard Daughter*. For the younger reader just in is Book 3 in

the Nevermore series, *The Hunt for Morrigan Crow*.

Here are some reviews on the new non-fiction books that we now have on the shelves this month:

### Nala's World – Dean Nicholson



A true story of a life-changing friendship between a man and his rescue cat, Nala, as they adventure together on a bike journey around the world. Dean sets off from Scotland to cycle around the world. His aim was to learn as much as he could about our troubled planet. But he hadn't bargained on the lessons he'd learn from his unlikely companion cat Nala. Together they experience the kindness of strangers, visiting refugee camps, and rescuing animals through Europe and Asia. Dean and Nala learn that the unexpected can be pretty amazing.

### Wild at Heart – Miriam Lancewood



After the success of Miriam's first book *Woman in the Wilderness*, Miriam has written another book about the dangers and delights of a nomadic life. She and her partner Peter left New Zealand to walk through the forests of Europe and along the coast of Turkey. They then moved on to trek the Australian desert but met with disaster. Their story is about life and death and the power of love.

### Searching for Charlie – Tom Scott



Tom Scott is a New Zealand writer and cartoonist, famous for his weekly column and cartoon on politics in the New Zealand Listener. One of his dreams was to write a book about one of the greatest New Zealand soldiers, John Upham, the only combat soldier to win the Victoria Cross twice. In researching for his book, he travelled extensively following the path that Upham's life took, through Crete and Egypt and POW camps in Germany and Italy. He also visited his childhood haunts and his work place in New Zealand's high country and talked to his family about Upham's compassion and deep-seated sense of fair play.

Don't forget to have a look at our Facebook page; look it up under Coromandel Community Library. You could also leave us a short review on one of the Library's books you would recommend.

Over Christmas/New Year, the Library will be closed from **25 December to 4 January**, reopening on **Tuesday 5 January**. However, we will be having a book sale on **Saturday 2 January** between 10.00am-12.00pm and will also open the Library for returns and issues, in case you run out of books. Merry Christmas and Happy New Year and I hope you all enjoy the many new books we have selected for your summer reading.

**APPROX  
2HRS**

**FERRY TIMETABLE**  
Effective 22<sup>nd</sup> September

**Fullers 360**  
EXPERIENCES & CRUISES

# Coromandel Peninsula

**2020**

	ADULT	CHILD*	FAMILY**
<b>ONE WAY</b>	\$67.00	\$42.00	\$191.00
<b>RETURN</b>	\$103.00	\$65.00	\$292.00

Buy tickets online at  
**Fullers.co.nz**

\*Child: 5-15yrs inclusive  
\*\*Family: 2x Adults & 2x Children

**TRAVEL INFORMATION**

- If friends or whanau are collecting you, we recommend that they pick you up directly at Hannaford's Wharf as capacity is limited on the shuttle bus into Coromandel Town. The shuttle bus meets the ferry and will transfer you to and from Coromandel Town (Samuel James Reserve carpark) and Hannaford's Wharf. There is no additional fare for this service.
- Advance bookings are advisable for all Fullers360 tours and bookable ferry services. We recommend arriving 30mins prior to departure to check in.
- All departures and timetables are subject to change or cancellation due to weather or operational requirements. Prices in this timetable are correct at time of printing and inclusive of GST, and may change without notice. All travel on Fullers360 services and tours is subject to our full terms and conditions of travel, available at [fullers.co.nz](http://fullers.co.nz)

keep up to date with  
**myferry**

Available for iOS & Android

**DEPART AUCKLAND:** Auckland Ferry Terminal, 99 Quay Street

2020	MON	TUE	WED	THU	FRI	SAT	SUN
02/11/20-20/12/20	-	-	-	-	6.40pm	8.45am	8.45am
21/12/20-27/12/20	8.45am	8.45am	8.45am	8.45am	-	8.45am	8.45am
28/12/20-03/01/21	8.45am	8.45am	8.45am	8.45am	8.45am	8.45am	8.45am
04/01/21-10/01/21	8.45am	8.45am	8.45am	8.45am	6.40pm	8.45am	8.45am
11/01/21-17/01/21	8.45am	8.45am	8.45am	8.45am	6.40pm	8.45am	8.45am
18/01/21-31/01/21	-	-	-	-	6.40pm	8.45am	8.45am
01/02/21-14/02/21	8.45am	-	-	-	6.40pm	8.45am	8.45am
15/02/21-28/03/21	-	-	-	-	6.40pm	8.45am	8.45am
29/03/21-04/04/21	-	-	-	-	8.45am	8.45am	8.45am
05/04/21-11/04/21	8.45am	-	-	-	6.40pm	8.45am	8.45am

**DEPART WAIHEKE ISLAND:** Orapiu Wharf

2020	MON	TUE	WED	THU	FRI	SAT	SUN
02/11/20-20/12/20	-	-	-	-	7.45pm	9.50am	9.50am
21/12/20-27/12/20	9.50am	9.50am	9.50am	9.50am	-	9.50am	9.50am
28/12/20-03/01/21	9.50am	9.50am	9.50am	9.50am	9.50am	9.50am	9.50am
04/01/21-10/01/21	9.50am	9.50am	9.50am	9.50am	7.45pm	9.50am	9.50am
11/01/21-17/01/21	9.50am	9.50am	9.50am	9.50am	7.45pm	9.50am	9.50am
18/01/21-31/01/21	-	-	-	-	7.45pm	9.50am	9.50am
01/02/21-14/02/21	9.50am	-	-	-	7.45pm	9.50am	9.50am
15/02/21-28/03/21	-	-	-	-	7.45pm	9.50am	9.50am
29/03/21-04/04/21	-	-	-	-	9.50am	9.50am	9.50am
05/04/21-11/04/21	9.50am	-	-	-	7.45pm	9.50am	9.50am

**DEPART COROMANDEL:** Hannaford's Wharf

2020	MON	TUE	WED	THU	FRI	SAT	SUN
02/11/20-20/12/20	-	-	-	-	8.45pm	4.30pm	4.30pm
21/12/20-27/12/20	3.00pm	3.00pm	3.00pm	3.00pm	-	4.30pm	4.30pm
28/12/20-03/01/21	3.00pm	3.00pm	3.00pm	3.00pm	4.30pm	4.30pm	4.30pm
04/01/21-10/01/21	4.30pm	3.00pm	3.00pm	3.00pm	8.45pm	4.30pm	4.30pm
11/01/21-17/01/21	3.00pm	3.00pm	3.00pm	3.00pm	8.45pm	4.30pm	4.30pm
18/01/21-31/01/21	-	-	-	-	8.45pm	4.30pm	4.30pm
01/02/21-14/02/21	4.30 pm	-	-	-	8.45pm	4.30pm	4.30pm
15/02/21-28/03/21	-	-	-	-	8.45pm	4.30pm	4.30pm
29/03/21-04/04/21	-	-	-	-	4.00 pm	4.30pm	4.30pm
05/04/21-11/04/21	4.30 pm	-	-	-	8.45pm	4.30pm	4.30pm



## CILT Coromandel Independent Living Trust

Tēnā koutou Coromandel whanau, we hope you are enjoying the warm summer weather. Our office is closed over the Christmas break but we will reopen on **13 January**. If you want a travel subsidy for hospital visits out of town, then please hold on to your signed forms and bring them in to us after the 13th.

### Phone Collection

We all know how easy it is to break the screen on your phone! For some people it's simple enough to get a new phone, but for many people a broken phone can be a disaster, especially around Christmas when there are enough financial pressures without having to buy a replacement phone. So with this in mind, we are collecting used cell phones that we can redistribute to people who need them in the community. All data is cleared before putting in a new SIM card – so if you are updating your cell phone and will have one spare, then please consider donating it to someone else! Phones can be dropped off at The Resource Centre at Tiki House.

### Communal Pensioner Garden in the making

CILT has acquired some funding to transform a grass slope at the Kaumatua Flats on Kapanga Rd into an area that the residents can enjoy. We are welcoming volunteers who are keen on helping to accomplish this project. Gardeners and tradies are welcome and anyone that can wield a spade, trowel or hammer. Construction will start in the new year. If you are interested, please contact Carol on 027 486 4043

### Volunteers' Fishing Trip

In a typical year we have up to 60 people volunteering in our various projects and helping to improve people's lives. These people help out with our community projects, including the Work Co-op, The Bizarre, The Goldmine, and helping people to get to hospital appointments out of town. On 4 December we took a team of volunteers, staff and

supporters on a fishing trip on board the Reuben Jack (operated by Coromandel Fishing Charters). It was a fantastic day out and a great way to acknowledge the wonderful mahi that the volunteers do in the community.

Our heartfelt thanks to these supporters for making the trip possible: Scenic Coast Bait, The Chopping Block, Salty Towers, Coromandel Four Square, The Support for Volunteering Fund, and of course the crew of The Reuben Jack!

### The Bizarre Summer Opening Hours

The Bizarre's opening hours are changing after Christmas. From **Tuesday 5 January until Saturday 13 February**, the shop will be open on Tuesdays, Wednesdays, Thursdays, Fridays and Saturdays from 10am to 4pm. The Bizarre will be closed on Mondays during this period.

Ngā Mihi Nui.

### The Age-Friendly Community Survey

The Age-Friendly Community Survey has now been completed and can be found on our website: [www.cilt.org.nz/resources](http://www.cilt.org.nz/resources).

To the 412 people who participated in the survey and to all of those who assisted in getting it out to as wide a cross-section of communities and individuals in the TCDC Coromandel-Colville ward as possible – thank you!

To Luana Johnston who put her heart and soul into achieving the survey, you went above and beyond your role as contractor – thank you! Ka pai Luana, you did such wonderful work with this.

This survey has provided a clear insight into the capabilities and needs of our area when it comes to catering to and caring for older people. It will be an invaluable resource.

On 23 November a meeting was held to establish a Seniors' Group and Jo Sanderson was appointed co-ordinator. If you are interested to know more about the group or wish to be involved, please contact Jo at [greenhillsparadise@gmail.com](mailto:greenhillsparadise@gmail.com) or see the article on the next page.

# HEY COROMANDEL, FIBRE IS HERE!

Fibre broadband has arrived and is now available in 14 areas across the peninsula!<sup>1</sup>

That means if you enjoy streaming TV and movies, like to Zoom, or work from home – fibre can handle a range of online activities. Plus, it's free to install!<sup>2</sup> Check your address at [chorus.co.nz](http://chorus.co.nz) to see if you can get New Zealand's fastest, most reliable broadband at your place.

**ASK FOR FIBRE. IT'S HOW WE INTERNET NOW.**

C H ● R U S

1. Currently available in parts of Matarangi, Whitianga, Hahei, Coromandel Town, Thames, Tapu, Waiomu, Te Peru, Puriri, Turua, Ngatea, Paeroa, Waihi and Waihi Beach.

2. Chorus currently offers standard residential fibre installations for FREE in areas that have fibre in the street. Some broadband providers may charge a fee for installation of their equipment.



## Museum News

By Raewyn McKinney

Happy New Year everyone.

I thought it would be fun to look at ways New Year was celebrated in our town in years gone by.

### From 'Thames Star' 5 January 1929: "Coromandel

On New Year's Eve a dance, organised to raise funds in aid of injured footballers, was held in the Forester's Hall, Coromandel. Warner's Orchestra supplied the music and Mr. Angus McNeil carried out the duties of M.C. Dancing proceeded until midnight, the music for extra dances being supplied by Miss Belle Evans. On the night of New Year's Day the Coromandel Bowling Club held a successful dance in the Forester's Hall. The many dancers danced to the music supplied by Warner's Orchestra, the M.C. being Mr. Ray Denize. During the evening Miss A.

Davies and Miss C. McNeil played the music for extra dances.

### Band Picnic

In spite of



1920 dance

the threatening weather early on New Year's Day a large crowd proceeded on foot, on cycles, on horses, in carts, cars and motor-bus to the fine beach at Oamaru Bay, where the Coromandel Silver Band was holding its annual picnic. It was not long before the many picnickers settled down to enjoy the day's outing. Those who went bathing found the newly erected dressing rooms a great convenience, and they were well patronised. By midday the weather had improved and the hot sun caused much sunburn. Throughout the day the Coromandel Silver Band played music which was much appreciated. In the afternoon sports were held, the results of the many events being as follows: Boys 14 years and under - J. Ngapo 1, J Bouskill 2, D. Davies 3. Girls, 14 and under - Mary Thomson 1, Z. Wilson 2. I. Payne 3. Boys, 10 and under - Roy Clarke 1, Ron McNeil 2. Roy Blithe 3. Girls, 10 and under - R. Martin and J. Gamble (tie) 1. J. Deeble 3. Boys, 6 years and under - N. Turner 1, Maurice Denize 2, J. Nicholson 3. Girls, 6 years and under - P. Robertshawe 1, S. Inglis 2, T. Rolton 3. Single Ladies' Race - Miss G. Jones 1, Miss G. Cato 2, Miss Z. Dick 3. Men's Race - R. Denize 1, R. Penlington 2, O. Peek 3. Bandsmen's Race - R. Jenkins 1, J. Jenkins 2, G. Darling 3. Obstacle Race - A. Davies 1, E. Breen 2, D. Davies 3. Long Jump - A. McDonald 1, C. Darling 2. M. Finan 3. About 4.30 p.m. a heavy shower of rain cleared the beach and most of the



1930 picnic at beach

picnickers found welcome shelter in the newly-erected shelter shed."

### From 'Thames Star' 6 January 1932: "Bowling and Croquet Clubs. Dance at Coromandel.

The second of the "double event" dance and "500" tourney, under the auspices of the Coromandel Bowling and Croquet Clubs, took place in St. George's Hall on New Year's Eve. As anticipated the function was a big success, the hall being full to capacity. The decorations, consisting of ferns, toetoe, lycopodium and ivy geranium, gave the interior a gay and festive appearance and added a little to the general satisfaction of the company. Miss McNeil's Orchestra provided the music with their usual vim and enthusiasm and were heartily applauded during the dance programme. The "500" tourney was well provided for, but not so largely attended as expected. Those taking part, however, were well satisfied with their evening and kept playing until the close of the year. On the stroke of midnight the usual applause was indulged in and during this phase of the old year out and new year in, the prizes for the card tourney were handed to the successful players. Mr H. Chambers again proved the winner of the gents' with a total of over 5000 points, and Mrs R. Campbell the ladies' with a total of over 4000. Mrs Lincoln and Mr Harris were the consolation winners."

The museum will be open from 1-4pm every day during January

## Age-friendly community group

### Open day 9 February

In response to the recent Age-Friendly Community Survey, conducted by Luana Johnston on behalf of CILT, a team of us have met to discuss setting up a social group.

This is to be inclusive and fun.

With social isolation a concern, this group will endeavour to gather in all who would like to belong, contribute, discuss, or hear about a group with seniors a priority.

Come along to the open day.


When: **9 February**, 1-3.30pm

Where: Combined Clubs of Coromandel Woolfams Ave (the Bowling Club)

Bar opens at 3.30pm for those who would like to have a drink afterwards.

Tea and coffee complimentary.

For further info. Ph. Jo Sanderson 022 050 3005 or Jule Nonane 027 392 3221. If you need transport to and from this, please phone Jean Ashby on 021 503 148



## Seeking Expressions of Interest

CILT - Coromandel Independent Living Trust is seeking expressions of interest from builders, contractors, and professionals who have an interest in being part of an exciting new project beginning May 2021 in Coromandel Town

This will be an innovative, multi-purpose facility with sustainable design features.

for more info: [www.cilt.org.nz/hub](http://www.cilt.org.nz/hub) contact us at: [hub@cilt.org.nz](mailto:hub@cilt.org.nz)

## Llandem Consulting Engineers

Derek Stewart  
CP Eng MIPENZ

- Structural
- Civil
- Geotechnical

[llandemengineering@gmail.com](mailto:llandemengineering@gmail.com)  
(07) 866 6704  
027 442 4234



## Mahamudra Centre

When you visit our wonderful retreat centre you will no doubt notice the prayer flags and the Om Mani Padme Hum (Mantra) symbols around the Stupa, Gumpa and the grounds.

We want to take this opportunity to explain the meaning of these in Buddhism as explained by His Holiness the Dalai Lama.

In Tibetan Buddhism, this is the most ubiquitous mantra and the most popular form of religious practice, performed by laypersons and monastics alike. It is also an ever present feature of the landscape, commonly carved onto rocks, known as Mani stones, painted into the sides of hills or else it is written on prayer flags and prayer wheels.

The prayer flag colors hold meaning; blue represents the sky, white represents the air, red symbolizes fire, green symbolizes water, and yellow symbolizes earth. All five colors together signify balance. According to Traditional Tibetan medicine, health and harmony are produced through the balance of the five elements.

It is very good to recite the mantra Om Mani Padme Hum, but while you are doing it, you should be thinking on its meaning, for the meaning of the six syllables is great and vast.

### Om

The first, Om, is composed of three letters: A, U, and M. These symbolize the practitioner's impure body, speech, and mind; they also symbolize the pure exalted body, speech, and mind of a Buddha.

Can impure body, speech, and mind be transformed into pure body, speech, and mind, or are they entirely separate?

All Buddhas are cases of beings who were like ourselves and then in dependence on the path became enlightened; Buddhism does

not assert that there is anyone who from the beginning is free from faults and possesses all good qualities. The development of pure body, speech, and mind comes from gradually leaving the impure states and their being transformed into the pure.

### How is this done? The path is indicated by the next syllables

#### Mani

Mani, meaning jewel, symbolizes the factors of method—the altruistic intention to become enlightened, compassion, and love.

Just as a jewel is capable of removing poverty, so the altruistic mind of enlightenment is capable of removing the poverty, or difficulties, of cyclic existence and of solitary peace.

Similarly, just as a jewel fulfills the wishes of sentient beings, so the altruistic intention to become enlightened fulfills the wishes of sentient beings.

#### Padme

The two syllables, Padme, meaning lotus, symbolize wisdom, just as a lotus grows forth from mud but is not sullied by the faults of mud, so wisdom is capable of putting you in a situation of non-contradiction whereas there would be contradiction if you did not have wisdom.

There is wisdom realizing impermanence, wisdom realizing that persons are empty of being self-sufficient or substantially existent, wisdom that realizes the emptiness of duality—that is to say, of difference of entity between subject and object—and wisdom that realizes the emptiness of inherent existence.

Though there are many different types of wisdom, the main one of all these is the wisdom realizing emptiness.

#### Hum

Purity must be achieved by an indivisible unity of method and wisdom,

symbolized by the final syllable Hum, which indicates indivisibility. According to the sutra system, this indivisibility of method and wisdom refers to wisdom affected by method and method affected by wisdom.

### The six syllables: Om Mani Padme Hum

Thus the six syllables, Om Mani Padme Hum, mean that in dependence on the practice of a path which is an indivisible union of method and wisdom, you can transform your impure body, speech, and mind into the pure exalted body, speech, and mind of a Buddha.

It is said that you should not seek for Buddhahood outside of yourself; the substances for the achievement of Buddhahood are within.

Warmest regards from the team in Mahamudra.



**SeniorNet Coromandel**

## Coromandel SeniorNet

By Bev Mayhead

Welcome to 2021! Our SeniorNet has been pretty quiet over the last few months. But we are still an active group and would welcome new members.

Maybe you will join us in the New Year?

On 1 December we had a Christmas get-together followed by a meeting at Jak's Cafe & Bar, which was really special!

Loes Beaver has decided to let go of some commitments now and has asked me to write for the Chronicle on a regular basis.

Contact Tom and Loes if you have any queries. Loes (07) 866 8053 or call in and see Tom at Rob's Small Motor Repairs

This lovely bus was painted by Patricia Turner in Te Kouma. The bus is now off on its travels around NZ, so look out for it on the road

## BUS LIFE!



# WE PAY TOP CASH

For any Vehicles: Dead or Alive, damaged, de-registered, mechanical problem, no WOF we buy it all.

WE PAY TOP CASH FOR ANY CARS, VANS, UTES, 4X4, TRUCKS



Conditions apply

FREE PICKUP

24/7

FREE CALL

# 0800 333 398

Or text 021 344 449      [www.vehicleremovals.co.nz](http://www.vehicleremovals.co.nz)

Papa Aroha

# Engineering

Est. 1980

Servicing Small Engines:  
Ride-on Mowers  
Quad bikes



MIKE McCALL • 07 866 8469 • 027 223 7919

Email [mikepapeng@gmail.com](mailto:mikepapeng@gmail.com)

# AOTEA HAIRDRESSER

Specialising in all aspects of HAIR

Stockists of Wella Professional

39B Whangapoua Road

Phone Claire (07) 866 7689

or 027 450 2052



### NEW LISTING



#### Coromandel, 279 Colville Road

- Two storied beach home on 918m<sup>2</sup> section
  - Excellent location of Kik/Shelly Bay 8 mins drive from Coromandel Town
  - 4 bedrooms, 2 lounges, 2 bathrooms open plan kitchen/dining + large laundry
- For Sale \$699,000**  
harcourts.co.nz/CO1936  
Raewyn Trail 021 0201 9111

### NEW LISTING



#### Coromandel, 835 Wyuna Bay Road

First time on the market!  
\*Main house with attached studio and separate chalet  
\*8,199sqm in a tranquil setting  
\*Walking distance to Town Centre

**For Sale Price By Negotiation**  
harcourts.co.nz/CO1935  
Dayle Candy 0274 336 862  
David Frew 0274 918 420

### STUNNING VIEWS

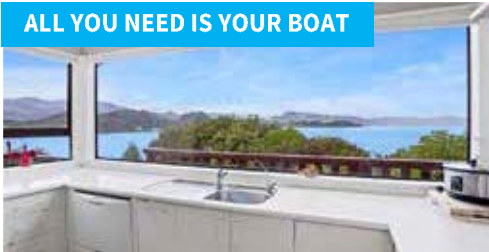


#### Coromandel, 2595D Tiki Road

Elevated site gives stunning rural & harbor views with beautiful sunsets  
Plenty of room for a home business, boat & motorhome, private wing for guests  
Four bedrooms (master with ensuite & walk-in wardrobe)

**For Sale \$1,295,000**  
harcourts.co.nz/ML4456  
Caro Reid 021 0291 5531

### ALL YOU NEED IS YOUR BOAT



#### Coromandel, 285 Wyuna Bay Road

- Positioned perfectly and on this private elevated large 2,742sqm section
  - Two storey spacious home with large kitchen, dining, 2 lounges, 2 bedrooms, 2 bathrooms plus spa pool
  - Capture the sun & the magnificent beautiful views of the Coromandel harbour
- For Sale Price on Application**  
harcourts.co.nz/CO1934  
Raewyn Trail 021 0201 9111

### HOME/INCOME



#### Coromandel, 39 Whangapoua Rd

This 4 bedroom brick & tile home with ensuite & office sits on 5,559m<sup>2</sup> of beautifully landscaped grounds & paddock. The 4 brick & tile units come with chattels intact. Everything you need to be earning income as soon as you move in.

**For Sale \$1,350,000 +GST (if any)**  
harcourts.co.nz/CO1918  
Caro Reid 021 0291 5531



Have yourself  
a merry little  
Christmas!

**Harcourts**

Thank you with Great Appreciation with Sincere Thanks & Warm Wishes, to all our Clients & Customers it was our pleasure to serve you.

Wishing You a Merry Christmas and a safe Happy New Year!  
From the Harcourts Coromandel Team  
Caro, Raewyn, Maria, & Roxanne

### GREAT VIEWS



#### Coromandel, 8 Oxford Terrace

First time on the market!  
\*Main house with attached studio and separate chalet  
\*8,199sqm in a tranquil setting  
\*Walking distance to Town Centre

**For Sale \$1,350,000**  
harcourts.co.nz/WI21530  
Annaleise Russell 022 584 6065  
Peter MacGregor 027 224 7332

### COMMERCIAL



#### Coromandel, 145 Wharf Road

- 2150sqm section
- Zoned Commercial
- 2 Titles
- Full services at fence
- 35m of Wharf Road frontage

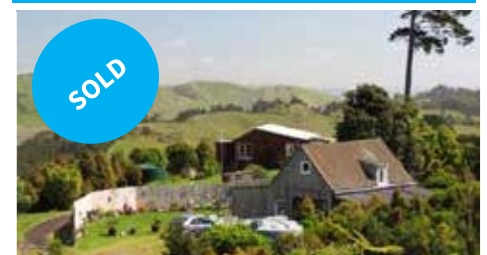
**For Sale \$750,000 +GST (if any)**  
harcourts.co.nz/CO1916  
Raewyn Trail 021 0201 9111

**SOLD**



#### Te Kouma, 31 Kowhai Drive

**SOLD**



#### Coromandel, 1240 SH25 Manaia



**Caro**  
Sales  
021 0291 5531



**Raewyn**  
Sales  
021 0201 9111



**Maria**  
Sales  
022 0815 817

**Coromandel Beaches Realty Coromandel Ltd**  
MREINZ - Licensed Agents REAA 2008  
105 Kapanga Road, Coromandel - 07 866 8260 -  
www.harcourtscoromandel.co.nz

## Coromandel Writers

By Jane Powell

The writers' end of year get together at Wailin Elliot's was a fun day that stretched long into the afternoon, telling stories in the cool of the porch. The writing exercise with the Christmas theme "No room at the inn" brought out some fascinating family dramas. Next meeting **13 February**: please ring Lora on (07) 866 7176 if interested in coming along.

### Song of the hills

In a quiet residential street up in the green belt above Wellington Harbour lived Mr and Mrs Hill with their string of young children, all boys – Roger, Tony, Paul, Michael, and Stephen. Mrs Hill had longed for a girl but after these five births in quick succession, she took the advice of her doctor and put an end to future pregnancies. It was never clear why she wanted a girl so badly. In due course rejected Mr Hill took to coming home later and later every night after work and developed an intense interest in golf on the weekends, leaving Mrs Hill total control over how she ran the family. She had a bright but unusual idea and decided that when at home alone she would put the boys all in dresses and tie up their hair with ribbons. When unexpected visitors came she explained they were just dressing up, or rehearsing for a play, or sometimes even that all of their other clothes were in the wash. For these special secret times she brought out the Barbie dolls, and the nail polish. Mr Hill didn't have

a clue. He would respond to the frequent questions of concern about his rarely seen wife with a slightly bewildered air.

One day there was a sharp knock at the door. It was Mrs Soandso from up the street. Your boys have been at my apricot tree, again. This couldn't be possible, she didn't have any boys, she only had girls. And to prove it she called her children to come to the door.

"Come Rose, Pauline, Michelle, Toni and Stephanie. Say hello to the nice lady."

The nice lady peered suspiciously at the row of faces. Defeated, she retreated, her shoulders hunched, cursing aloud what she would do to them when she caught them.

This was a challenge to any mother. Mrs Hill sent her five out as boys to raid poor Mrs Soandso's garden by night, by day she proved they were innocent girls. Everyone else in the street had gazed at the beautiful orange and red but never been given fruit now found a delicious sweet apricot on their doorstep.

It was nearing Christmas and so for her

coup d'état Mrs Hill decided to send her "girls" out carol singing in the street. She dressed them all carefully in angelic pink and white robes and got them to rehearse their songs. They moved up the street, a carol for each house rewarded by a sweet treat. Finally they stopped at number 81, the apricot tree house.

By this time a crowd had gathered behind the little choir. Mrs Soandso came out to her front gate. "Bunch of thieves, liars, I'll get you, and I'll strip you and prove it," she yelled. The crowd gasped, after all it was Christmas.

Five beautiful little unbroken boys' voices rose into the air

"While mean old Mrs Soandso  
watched her apricots by night  
All hidden from all eyes  
The angels of number 3 came by  
And took her by surprise"

The crowd joined in, making up more verses. And do you believe me but that song of the Hills is sung every Christmas in that street.

### Decimated scallop beds

The decline in scallop numbers on the eastern side of Coromandel Peninsula has prompted Opito Bay locals to join forces and initiate a programme to restore stocks of the delicacy, starting with a survey to establish how many scallops actually remain in the Bay.

The survey was officially launched at a ceremony in December by Ngāti Hei. The survey results will be available in the new year.

The community is also supporting a voluntary ban on all take of scallops over the summer prior to Ngāti Hei putting a formal rāhui in place.

## *The perfect finish to your home or bach – beautiful wooden joinery*

**CEDAR • MACROCARPA • RECYCLED NZ NATIVES**



**RUAMAHUNGA BAY JOINERY**

email [info@woodenjoinery.co.nz](mailto:info@woodenjoinery.co.nz)

[www.woodenjoinery.co.nz](http://www.woodenjoinery.co.nz)

027 254 4423





# Combined Clubs Of Coromandel THE CLUB

## Bowling Club

By Cherrie Rokela

Our Club champs are almost completed, and it is heartening to see our junior members competing in these.

For the first time (we believe) our under 5 years champ singles are a husband and wife, Rex and Linda Peters.

Congratulations to all of our winners this year.

Our November season of Twilight Bowls has concluded – and what a popular tournament this is. The winners of the 5pm session were Mussels R Us, runners up Oyster Catchers, and 6pm winners were CILT, runners up Four Square. Look forward to the next tournament, beginning **2 February**.

Our Open Optional Annual Ham Triples was won by a composite visiting team of Graeme, Irene and Brian. Great bowling on a sunny Coromandel day.

The new rooms at the club house now have weatherboards and windows, so there will be a painting working bee soon; all help with this gratefully received with this.

Our Christmas party was held on Friday 11 December. A fun night, potluck dinner, and interesting secret Santa gifts.



Linda and Rex Peters winning their respective categories

## RSA News

By Pat Williams

Hope everyone had a great Christmas and that 2021 will be a much better year for the whole world!

Had no ideas or offers of help regarding an entry in the Santa Parade so went it alone. Thanks so much to the following: Ann Turner for the loan of her little garden trailer; Wayne Robertson for the farm bike (that was a mission); Kim Radick for photocopying; Peter Thompson (this time not Snoopy but a dalmation; unfortunately lots of his spots fell off) for driving the farm bike; Thames Coast KEV for the loan of their flags; last but not least the flag bearers – Ariana Wake, Ian Franklyn Jnr. and my niece Leslie Fraser-Jones. Well done.

Our trip to Mercury Bay RSA Christmas party was enjoyed by 25 or so of our members. As usual we came home with several raffles. Coromandel usually wins ahead of Mercury Bay in how many raffles are won!

Patronage-wise it has been a good year for our RSA, with lots of visitors.

Important: Due to upgrades being carried out at The Club Saturday RSA Social meets will not be held on **9, 16 and 23 January**.

We are all looking forward to when the upgrades are finished and things return to normal.

Don't forget subs are due on **31 December**.

Hugs. Kittens crave them. Puppies love them. Heads of State are not above them. A hug can break the language barrier, and make the dullest day seem merrier.

That's it for now. Take care and happy days to all.



Coromandel Area School students with the Christmas tree at The Club which they helped decorate

The beautiful Christmas Hamper raffle was won by Robyn Dudson.

A big thank you to Cindy and Jim for organising this.

Lastly a huge thank you to the children of the Community Preschool, and Coromandel Area School for decorating our Christmas tree with their handmade decorations. It looks beautiful in our clubrooms.

Happy New Year to you all, and we look forward to 2021, and more great bowling.

**PARSUN**  
OUTBOARDS

Authorised distributor  
**Rob's Small Motor Repairs**  
18 Kapanga Road  
Rob 866 7865  
or 021 618 601

Proudly imported by  
**Hurricane Products Ltd**

# PROUD TO BE LOCAL



**Pied stilt/poaka**

Pied stilts, herons and ducks have taken over the lower parts of the Medlock's front paddock. This has come about thanks to the Medlocks creating a wetland behind the McGregor Bay Wetland Reserve, effectively increasing the wildlife habitat acreage in the bay. No sooner had the diggers departed, various species flew in, with the pied stilts promptly breeding. Approximately five pairs are there with one hatched chick at time of writing. This stilt is on a small mound as they prefer to nest near ground/water level with the nest being a lined scrape. Given the right conditions they can produce up to six eggs and two broods. Stilts are monogamous and share the incubation. However, they don't have to go far to feed as the new area is providing food for a small flock of them. Carol Sutherland took the photo and Bob Medlock said they are happy for people to come and see what has been done. Good wildlife shots can be obtained 100m up the driveway.

## FLOORING XTRA

**Locally owned and operated**  
**Book Your FREE In Home Consultation Today**

- Free measure and quote
- Floor Prep
- Installation by qualified installers
- Resene Paint (Fagans Only)
- Carpet
- Vinyl
- Laminate
- Tile Warehouse Tiles
- Qualified Tiler On Staff
- Drapes & Blinds

**ON ALL FLOORS FLOORING XTRA,**  
**90 KOPU ROAD, THAMES 07 868 7608**  
**thames@flooringxtra.co.nz**

**FAGANS FLOORING XTRA,**  
**68 ALBERT STREET, WHITIANGA 07 866 2836**  
**whitianga@flooringxtra.co.nz**

### Coromandel Contract Bridge Club

By Judy Bronlund

Happy holidays to everyone. We will be starting our new year's programme in February after a fun night on the Monday of Auckland Anniversary.

Throughout the year we play on Monday evenings at the St John rooms. New members and visitors to our area are most welcome to join us. Lessons will be given if you want to learn how to play bridge.

Contacts: Lyn (07) 866 8858,  
 Val (07) 866 8730

### Poetry SPOT

#### Haiku

By John Irvine

I smile with every step  
 for each one  
 is a new experience

### Hon Scott Simpson MP For Coromandel



2020 has been a tough year for everybody. I won't be sorry to see an end to it.

I really feel for those who have lost their jobs, those who have not been able to farewell their loved ones who have passed away, and young people who have had their dreams of the traditional Kiwi OE put on hold. Small businesses and tourist operators have been hit particularly hard. BNZ's announcement that they intend to close multiple branches across the country, including Coromandel Town, Katikati, Waihi and Whangamata, was another blow to our communities. News that Westpac is considering closing their Paeroa branch came soon after the BNZ announcement.

Hopefully a busy summer period with families reuniting and visitors coming to explore our region will provide a welcome boost to morale and to local businesses. To those who are making their annual trip to the Coromandel or are visiting for the first time, I have no doubt that your holiday here will leave a lasting, positive impression.

Everyone in our region will be welcoming news that an emergency rescue helicopter and crew will be based back at Whitianga during January 2021. While it is only a limited return, it is hopefully the first step toward the reinstatement of our previous service which we had come to rely on. The nearly 50,000-signature petition that I presented to Parliament remains before the Health Select Committee. I will continue to fight for the restoration of the helicopter service for the full peak summer period and on long weekends.

One last note: the holiday period here can be hectic with locals and visitors alike enjoying fabulous summer festivities. I think we'll have even more visitors here this year. With this in mind, please remember to continue scanning in at the places you go. This way each of us is doing our bit to keep things relatively normal.

Be safe out on the roads. Take your time.

I wish you and your family a happy holidays in our special part of the country and all the very best for Christmas and what I hope will be a better New Year in 2021.

### Scott Simpson

MP for Coromandel

**Contact me anytime**

0800 550 330 • scottsimpson.co.nz  
 mpcoromandel@parliament.govt.nz

**National** 

Authorised by Scott Simpson, 614 Pollen St, Thames.





## B and B on the Coromandel

A story by Michael McKinlay

"Home cookin' like your Mum never did," said the sign, a few miles north of the Coroglen Tavern.

The lady of the house seemed distracted, as if hoping no one would turn up that evening.

"Would you perhaps have a room for one night," I enquired.

"Pends what you mean," she muttered.

"A bedroom for two with breakfast," I replied.

"Yeah, we could probably manage that," she said. "But we don't normally take Pommies; always leave a mess behind them."

"We were attracted by your sign," I said.

"The previous owner put that up; worked herself to death looking after tourists. That's her grave over there under the macracarpa."

"Golly," I said, somewhat taken aback.

"She died during hay-making; fell asleep on the job and got dragged through the bailer. Came out tied up in twine. She was buried over there before the smell got too bad."

The bed was covered by a big duvet which seemed to rise and fall over a number of small hillocks. The lady said, "It's really comfortable once you get yourselves fitted in around the lumps."

"You'll be sharing our bathroom," she added. "Folks last night wanted clean towels. Amazing! Only washed them last Sunday."

"Now, for breakfast, we've got all the food you'll need. The eggs are really fresh. The hens live in the bushes at the end of the house paddock. Cereals and coffee are on the table in the living room, but you'll need to get your own milk. Come and meet Rosie our cow."

Rosie was huge, with some complicated apparatus dangling from the lower part of her body, which is where the lady indicated the milk would come from.

"It's easy; all you gotta do is tie her back leg to the clothes line pole, wash her teats with this cloth and then spray milk into the can."

Next morning, we both woke resolved to have a go at being milking pioneers!

"Me first," said Deb. "You do the tying up and I'll pull the teats."

We walked out to meet Rosie. She looked even bigger in daylight and faced us with a glare.

I got the rope round her rear leg, pulled it back and tied it to the pole. There was a rumble from Rosie as I did so.

"She probably just wants us to get on with it," said Deb. Rather her than me, I thought, cowardly.

Deb bent down to wash the teats between Rosie's back legs. It all looked very odd. Hairy, and not as many as the previous evening. Rosie suddenly let out a loud bellow and took off like a rocket, dragging the clothes line pole out of the ground. She disappeared head first into a line of bushes, 20 metres ahead.

The lady came running out of the house.

Just then, another large animal sauntered up to us from around the side of the house and gave a loud moo.

"Morning, Rosie my pet," said the lady.

"That's not the cow I was trying to milk," gestured Deb.

"Crikey," said the lady, showing some concern. "You've been trying to milk our bull."

"I'm not sure that I feel like any breakfast now," Deb said. "Perhaps you can tell us the nearest place where we can get a latte?"

The lady looked at her blankly, clearly wondering what a latte was.

"We don't do foreign stuff 'round here," she said, "but you could try Whitianga; they've got some fancy places there. Make sure you sign the Visitors' Book. Always pleased to get comments."



WWW.JAMESDRAINAGE.CO.NZ

Excavators | Tip Trucks | Bobcats | Auger & Chain digger hire  
Skip Bins | STMS Services | Septic Tank Services | Portaloo Hire

1020 Tiki Road, Coromandel  
p. (07) 866 8308  
e. jamesdrainage@xtra.co.nz

## Healthcare at Thames Hospital during the summer holidays

Waikato District Health Board and Te Korowai Hauora o Hauraki are partnering to offer a summer clinic for non-urgent health care.

**The summer clinic at Thames Hospital will be open Monday to Friday 8am to 4.30pm from December 14**

The clinic will be closed on public holidays. No appointment or enrolment is needed.

Thames Medical Centre will continue to provide a general practice clinic at the Emergency Department on Saturdays 9am to 3pm.

Charges may apply for clinic services.

For free 24-hour health advice Healthline on 0800 611 116.

**If you have COVID-19 symptoms or need a test, call 0508 835 676 first.**

**For emergencies or urgent medical attention dial 111 or go to Thames Hospital Emergency Department.**

We wish you and your whānau a happy and safe Christmas and wonderful New Year



Waikato District Health Board

## Ann's Good News, Naturally

By Ann Kerr-Bell



### Your healthy colon

Colon care and cleansing are critical to healing and keeping you healthy.

Your colon must be free of toxins, waste material and unhealthy microorganisms, as they can accumulate on the walls, preventing the food you eat from being properly absorbed by your body.

Most people have 7 to 10 pounds of old faecal matter impacted in or on their colon wall, even if there is a bowel movement daily.

Waste will then back up, into the rest of your digestive tract, then the liver and kidneys. This creates skin problems, muscle and joint pain, then more serious diseases, constipation, headaches, weight gain. Disease originates in your colon.

### What the colon does

Your colon is not merely a waste eliminator. It is crucial for sending water, and essential nutrients from food, into the body through the colon wall. If there is blockage, toxins build up and are absorbed into your body. Parasites, yeasts and viruses can thrive in this toxic environment. Many of us harbour viruses that only emerge when our immunity is low. The buildup of toxins physically impairs elimination of faeces, preventing the essential friendly bacteria from colonising and doing their work.

Why cleanse – If you have a health problem, your digestive tract will unquestionably be in poor condition.

Benefits of a healthy colon – Optimise physical, mental and emotional health.

### Longevity

Babies are born with a super healthy digestive tract, building a strong immune system, promoted by vaginal birth and mother's milk. When they eat properly with correct food combining and lots of vegetables, they do not store toxins in their digestive tract and so quickly eliminate waste matter.

If we could maintain our digestive tracts and colons in the condition of a healthy one-year-old child, old age would be disease-free.

### How foods move through

Transit time (time from eating to pooing) in a healthy person should be 18-24 hours. The modern western diet has lengthened it out to

65-100 hours. A healthy purification, digestion or breakdown of foods process requires healthy food, good bacteria and a healthy internal environment.

### What damages colon

Modern Western diet and lifestyle – Sugar, flour products, improperly prepared grains, over-eating, poorly digested animal products, toxins, drugs, chemicals, stress, anger and fatigue.

### My own experience

After I recovered from surgery to remove my colon (I was advised by "experts" it was the best option), the colorectal surgeon "specialist" stated that because people do not need a colon, I needed no nutritional advice. His statement shocked me.

My post-operation recovery began with booking into Naturopathic College to learn Functional Health – Nutrition, Naturopathy, Herbal Medicine, Homoeopathy, then onto to a Bachelor of Health Science.

Your colon is necessary for absorbing essential nutrients and water.

I can help you with the following: curing colon diseases, colon cleanse, clean colon foods, understanding intestinal bacteria, quality probiotics, fasting, maintenance, parasites.

### Colon exercise - "The Deer Exercise"

Sit in a comfortable position. Tighten the muscles around your anal opening as hard as you can. Hold your sphincter muscles for only a few seconds. Then longer. Women should tighten your vaginal muscles as well. When done properly, this feels as if air is being drawn up into the rectum. Stop, then repeat it when you are rested. After working on this exercise for a few weeks, you will be aware of a pleasant feeling traveling from the base of your anus, through the spinal column to the top of the head. Benefits – Tones anal and rectal muscles, aiding peristaltic action and reducing transit time, improving passing of stools and urine. Prevents and reverses colitis, haemorrhoids and cancer, prostate issues, menstrual disorders, infections and vaginitis. Strengthens and stimulates vaginal wall.



### Haiga

By Chris Wornall

unfurling flower  
whispers to a listener  
some secrets of life

## Natural Medical Centre

*The natural alternative for all your health requirements*

At Tiki House,  
Coromandel.

For appointments,  
phone or text: 021 046 1647  
or email: annk-b@ps.gen.nz

[www.naturalmedicalcentre.co.nz](http://www.naturalmedicalcentre.co.nz)

### Ann Kerr-Bell

B.Hlth.Sc. (Comp.Med.)  
Adv.Dip.Naturopathy  
Adv.Dip.Med.Herb. MNZAMH

Naturopath  
Medical Herbalist  
Nutritionist  
Massage Therapist

# TREE WORK

Call 027 451 2224  
or 07 866 8177

[www.dynamictreecare.co.nz](http://www.dynamictreecare.co.nz)  
Email: [dynamictreecare@gmail.com](mailto:dynamictreecare@gmail.com)





## New rating valuations for Thames-Coromandel District

Thames-Coromandel District property owners will soon receive a 2020 Notice of Rating Valuation in the post with an updated rating value for their property.

The new rating valuations have been prepared for 29,242 properties on behalf of the Thames-Coromandel District Council by Quotable Value (QV). They reflect the likely selling price of a property at the effective revaluation date, which was 1 September 2020, and do not include the value of chattels.

On average, the value of residential housing has increased 20.9% since 2017 with the average residential house value now sitting at just over \$822,000, while the corresponding average residential land value increased by 28.3% to a new average value of just over \$556,000.

QV property consultant Jarrod Hedley commented: "Residential house values have grown very strongly this year – particularly on the eastern side of the Coromandel. Though we've seen the most growth at the lower end of the market, there remains strong demand for beach-front property.

"Over the last few months the market has continued to surge as a result of pent-up demand post the initial lockdown. What we are seeing is a majority of buyers looking for semi-permanent holiday homes that are in accessible locations with good infrastructure and services.

"As people are becoming more flexible in their working conditions, demand has increased and housing stock on the market simply has not been able to keep up."

Meanwhile, commercial property values have increased by 27.7%, and property values in the industrial sector have increased by 18.5% since the district's last rating valuation in 2017. Commercial and industrial land values have also increased by 31.6% and 32.1% respectively.

"Over the last three years commercial and industrial rentals have either remained static or increased slightly with yields strengthening depending on location," said Mr Hedley. "However, there has been a lift in demand since lockdown."

Rating valuations are not designed to be used as market valuations for raising finance with banks or as insurance valuations. They are usually carried out on all properties every three years to help local councils set rates for the following three-year period, are independently audited by the Office of the Valuer General and need to meet rigorous quality standards.

New rating values will be posted to property owners after 2 December 2020. If owners do not agree with their rating valuation, they have a right to object through the objection process before **22 January 2021**.

## Mana Update

By Jade Ferrière

Have you ever sat and watched a bee bumbling by? The saying "busy as a bee" is no doubt something that we can observe as they move with focused intention from one flower to another gathering pollen.

As we begin the New Year, we can learn a lot from our buzzing friends. More than many other species, bees function as parts of a whole. Their perception and purpose is shaped by what is needed for the survival of their community. It is easy to misconstrue this interdependence as lacking in individuality, however, when we look closer at these amazing creatures, we can learn valuable lessons about how much we can achieve when we band together with others to work for a higher purpose.

Most bees have their own specialised roles, which they play out with self-responsibility. They recognise the importance of their contribution and in many ways symbolise the essence of self-knowledge and humility. They also display selfless service as they work for the common good.

Working tirelessly to sustain the integrity of the hive, living and dying as necessary to preserve it, they are not unlike the individual cells that make up the human body. Little emphasis is placed on their individual needs, and they illustrate the metaphor of being able to see beyond our small self to our place within a greater whole.

Bees can be a source of inspiration to us as we begin this New Year and set our intentions or resolutions for the things we would like to dedicate ourselves to. In pursuit of our goals, we can contemplate how our motivations can benefit the greater whole. At Mana we are exploring more ways to source local, sustainable produce; we are raising consciousness about the environment and inspiring others to do the same.

We all have varied skills and talents. When we apply these gifts, knowing that we are one part of a greater organism, we can work together to restore a sense of harmony to our world. As you contemplate what it is that you are moving towards in 2021 we invite you to explore with us:

What aspect of the greater community is important to you?

Where are you drawn to make a difference?

What is something greater than yourself that you can commit to this year?

It is our hope that we can find ways to serve a higher purpose and experience a deep sense of fulfilment along the way. Wishing you a nourishing start to the New Year, from all of us at Mana.

## Chartered Accountants

### The Hauraki Taxation Service Limited

- ▶ For out of town independent accounting advice
- ▶ Established 1982
- ▶ Approved agents for Inland Revenue Department
- ▶ Offices in Coromandel Town & Thames

myob | BankLink | xero | CASHMANAGER™ Smart Accounting Software  
BY ACCOMPLISH

95 Kapanga Road, Coromandel  
Ph/Fax: 07 866-8660  
Em: [coro@haurakitaxation.co.nz](mailto:coro@haurakitaxation.co.nz)



retreats  
workshops  
events

Mana Retreat Centre, Coromandel New Zealand

Book Online - [manaretreat.com](http://manaretreat.com)

<b>2-8 JAN</b>	Eyebody 2020 with Peter Grunwald
<b>8-10 JAN</b>	January Relax Weekend 2021
<b>11-16 JAN</b>	Sufi Retreat with The School of Sufi Teaching NZ
<b>17 JAN</b>	An Introduction to Qi Gong w Hedwig Bakker
<b>21-26 JAN</b>	Caravan of Mystery with DUPANZ
<b>29-31 JAN</b>	Mindful Self Compassion w Anna Friis & Mara Elwood
<b>5-7 FEB</b>	Innerspace with Abby Simons and Maria Munkowits

# Rangatahi

CELEBRATING OUR CHILDREN

## Colville Bay Preschool

"That which we nurture, will grow."

Our Mission statement: The centre community will work together to promote and value a place where children belong, learn and have fun.

We are a small, community-based, home-like centre nestled by the sea at the foothills of Mt. Moehau, on the shores of Tikapa Moana at Colville Bay. Our tamariki are 2-6 years old. On Wednesday mornings we welcome parents and their toddlers to join us between 9am and 12pm.

This year we established Bush Kura for our 4-6-year-olds. This has proved to be immensely popular and successful with the tamariki, parents and teachers. We go out every Wednesday morning for about three hours, rain or shine. We are fortunate to have the ngahiri right across the road for us to explore.

"Developing the natural super senses early in life makes us safer; it increases our ability to learn and create; it gives us perhaps the most important gift – it improves our measurement-defying ability to more fully engage in life; to feel, to sense wonder and joy." – Forest Kindergarten International Federation Facebook page

"Re-engaging children with nature might have broader implications... If you have joy

and positive experience in nature, you will grow up and take more care of our world." – Markepramd (Apolitical Group Ltd)

Our Ngaahere/Bush Kura programme encompasses each strand of the NZ Early Childhood Curriculum "Te Whaariiki", upholding the vision of children as "competent and confident learners and communicators, healthy in mind, body and spirit, secure in their sense of belonging and in the knowledge that they make a valued contribution to society".

### Bush Kura at Colville Bay Preschool by Kaiako Esther

We are lucky to have such an incredible local environment to explore in Te Uumangawhaa o nga waka, Colville. The Ngaahere and the shores of Tikapa Moana at Cabbage Bay expands our learning environment, and we form many connections with the living world around us. We make spontaneous hikoi with all the tamariki down to the foreshore, and have a weekly one-day "Bush Kura" session for the four-plus-year-olds. Children work together at their best in this child-led programme, setting their own challenges and limits, assessing risks, negotiating the story in elaborate dramatic play, and, with the support of their teachers, getting to know the terrain, the plants and the creatures of the Ngaahere. We keep safe by practicing Tikanga protocol



for self-care, looking out for each other and taking care of the environment. The boundaries here are behavioural rather than physical, trusting in the capacity for children to manage themselves responsibly socially and physically with the opportunity and support. It is always a new adventure. We notice the connections children develop with special places, old trees and tracks, and stories which link one week to the next as we delve deep into the forest and swamp lands.

Te Koohungahunga o Te Uumangawhaa-O-Nga-Waka, 2391 Colville Rd (behind Colville School) (07) 866 8319

## Coromandel Youth Group at Hauraki House

We hope that you're enjoying the summer holiday period and staying safe with all that it brings. Youth Group holiday hours are reduced for the month of January: Tuesday, Wednesday, Thursday 11am-4pm, Sunday 1-4pm. Holiday entry is \$2 (or please talk to us to make alternative arrangements). Bring your child along with a packed lunch and/or money for snacks, pizza, pies or hot chips.

For more information call in at the Youth Rooms, Hauraki House or telephone us on (07) 866 7061.

Thank You!

Along with the kind donations received, we would like to thank those that make this programme possible: Lottery Waikato, Trust Waikato, COGS, D.V.Bryant Trust

## Coromandel Community Preschool

By Debra Attwood

Kia ora koutou, nga mihi nui o te Tau Hou, Happy New Year to you all, I hope you all had some quality time with your whaanau over the Christmas break, with lots of aroha and wairua. At present the kaiako and tamariki of the Preschool are having a well-earned break and will be feeling refreshed to start the new year on **Monday 11 January**.

It is time to say thanks to all of the amazing maatua, parents, tiipuna, grandparents, kaiako, tamariki and community people who have contributed to a fantastic 2020 at preschool. We have had some challenges the past year with Covid-19 causing many disruptions, but in some ways I believe it allowed us time to reset our lives and sort our priorities, to understand what is important in life and it comes back to this!

He aha te mea nui o te ao. He taangata, he taangata, he taangata.

What is the most important thing in the world? It is people, it is people, it is people.

People, our whaanau, and our community are what matters most, not material things, so this year make a pledge to work towards achieving that balance in life, spending time with your tamariki, and extended whaanau and care for our family and friends, manaaki i to maatau whaanau me o matou hoa.

At preschool in 2020, we had many people who helped us out by coming along to working bees, helping with floats for the Illume festival, Santa Parade, joining us and their tamariki on trips around our amazing and unique environment, helping in the centre, providing kai for our tamariki, fixing equipment, making or donating new equipment, really the list is endless, but to you all we are eternally grateful and appreciate all of your hard mahi to make our centre so special.

We also appreciate the Coromandel Community Board for the grant of \$2,500 to replace our sandpit covers.

Our rolls are currently full, but you are welcome to come along if you have a child this age and are looking for a quality early childhood centre and see if this is the right place for you and your child to begin their lifelong journey of learning. You can put your child's name on the waiting list if required.

The centre operates Monday to Friday 8.00am-4.00pm. We are situated at 155 Pottery Lane. If you are interested call in for a visit or phone us on (07) 866 7570



## SOLAR ENERGY SPECIALIST

Residential Grid Connected Systems  
OFF GRID LIFESTYLE Energy Systems

**GOOD ENERGY**

SOLAR ENERGY SOLUTIONS  
DESIGN, INSTALLATION & SERVICE  
[www.goodenergy.co.nz](http://www.goodenergy.co.nz)

Email: [info@goodenergy.co.nz](mailto:info@goodenergy.co.nz)

Sales 021 606 835 - Technician 021 242 3394







# The Waterworks

The Waterworks is an experience like no other  
70+ water powered attractions and quirky  
contraptions to look at, play on or interact with.

MAZE ENTRANCE

Come  
and see  
the new  
MAZE

Visit NZ's quirkiest theme park TODAY!

Water Cannons, Water Bikes, Flying Fox, Human  
Hamster Wheel, Giant See Saws plus loads more.

Cool down in our natural Swimming Hole and  
'walk the plank' off our dive board.

Go crazy in our jumbo sized adventure playground.

Indulge on excellent food and coffee  
from our onsite café or bring a picnic  
and enjoy free use of our BBQ's.

Meet our newest team members,  
Laurel and Hardy our Boarder Collie Pups.

Bring the whole family!

The Waterworks is dog friendly, wheelchair  
accessible and suitable for all ages.



101 MUST-DO'S  
FOR KIWIS

A4

Voted #20

On the 101 Must-Do's For Kiwis List

2012  
Category  
Winner

2011  
Category  
Winner

Voted best theme  
park in NZ!

Voted  
#1 in

THE COROMANDEL  
good for your soul  
competition



07 866 7191

Open 7 Days: 10am - 6pm

The Waterworks, 471 The 309 Road, Coromandel Town

[www.thewaterworks.co.nz](http://www.thewaterworks.co.nz)

book online for a 10% discount





# Rangatahi

CELEBRATING OUR CHILDREN

continued

## Te Rerenga School

By Mary Kedzlie, Principal

It was a pretty fun and full December for our students at Te Rerenga with loads of interesting and exciting events.

Rooms 3 & 4 had an amazing time at their respective camps at the Kauaeranga Valley and at Hahei. We then had our school athletics day, followed by our musical concert where the children performed musical items that they learnt throughout the year during their weekly music lessons. It was also a special time for our departing year 8 students. They had a fun morning out at the Driving Creek Zipline in Coromandel followed by the traditional Leavers Dinner at The Dunes that same evening! The Room 4 sustainability group met with Amber Boyd from Whitebait Connection to undertake water sampling from the Waitekura Stream. This is the stream that flows into the wetlands we have been planting. After locating and studying various bugs, eels, fish and critters along the banks and in the stream, then checking the amount of vegetation as well as the water clarity and flow, the water was deemed in "excellent" health. Funday Monday, our annual fun day had the traditional water slide and also Mr Adshead's head shave for cancer raising funds for the Mercury Bay Cancer Support Group. This is an issue particularly close to our school's heart this year and we are delighted with the support that Darrell got.

Congratulations to Year 4 student Sophia Adshead on her amazing drumming, which was featured this week on YouTube. A month or so ago Sophia was asked to take part in a drum-off to demonstrate that nine-year-old girls can drum. It started with a call from a friend saying they had seen a 10-year-old girl in the UK drumming and challenging other drummers to a drum-off competition. This friend figured if a 10-year-old girl in the UK can do this, a nine-year-old in NZ can do it too, and Sophia was asked. We are waiting to see what the response will be now that Sophia is online! This is a link to her take on "Right Here, Right Now": <https://www.youtube.com/watch?v=H0V3IBgWOYo>.

If Sophia gets enough likes on the post, she will be up for a drum-off with a famous drummer!

We had our final assembly and rang the school bell for the last time in 2020. It will be a year forever etched in our school's history and our hearts for a variety of reasons. I am so proud of the children, my staff, parents and the wider school community as to how they managed themselves through what has been some sad, challenging and turbulent times. I am also very grateful for the wonderful support we received from our wider community. On that note, do have a wonderful and safe holiday period everyone and I will enjoy sharing our school's news with you again throughout 2021.



## Scouts

Were you in the Scouts or Guides and had a great experience that you would like to share with our young people? Would you like to help out to teach kayaking or archery? Would you like to be a Scout leader?

Coromandel Town had its own Scouts until the end of 2018. The Scout Den near Hauraki House has sat empty since then (although it has been used by other groups such as the model club) but no Keas, Cubs, Scouts, Venturers or Rovers.

My boy, for one, is pretty sad about that.

Scouts NZ has 300 groups all over NZ with 13,000 members. It is for young people between the ages of 5 to 26 and is open to all genders, ethnicities and religions.

According to the Scouts website, their aim is that young people do "adventurous, fun, active, challenging, and inclusive activities. One night it might be a scavenger hunt around town. On another night, it might be planning a tramping trip. All of the fun, adventure, and challenge is designed to help your young person's social, physical, and mental, intellectual, character, emotional, and spiritual development."

And it is all run by volunteers, which is why in our community, it came to an end. We have to now make the decision whether the building could be better made use of by another group and whether the lease should be renewed. So we are looking to gauge interest in doing something in the New Year.

The costs are approx. \$200 per year for membership including activities (paid gradually over the year). The cost for the basic uniform consisting of a shirt and scarf is around \$40-50. Badges are around \$2-\$3 each. Locally, there are some funds in hand which could support a new group to start up.

For this your child could be involved in weekly (or fortnightly) meetings and extracurricular activities particularly during weekends and holidays, for scout camps and outdoor pursuits. The Scouting NZ website provides comprehensive support, training and ideas.

Please get in touch if you are interested with Deborah Hide-Bayne at [deborahhidebayne@icloud.com](mailto:deborahhidebayne@icloud.com)

## Kiwi Can

Kia ora koutou,

Thanks to everyone who dressed up and showed up to the Kiwi Can Christmas Run 2020! We had so many registrations on the day, and more tamariki got involved compared to last year, so well done, tino pai!

We wrapped up 2020 with our last theme/kaupapa for the year: RESPECT! "We respect our school and community too. Caring for our environment is the thing to do." Our last module was "Respect for the Environment" and it was great to see Rooms 3 and 4 were doing community cleanups in their class time! Then of course our last lesson of the Term was Games Day and Prize Giving! Congratulations to the following students for being our Kiwi Canner of the Term! CAS: Zoey, Phoebe, Ruby, Serenity, Cieara, Phyllis, Kendyl and Tapuni! Colville: Wyatt and Nate. This is awarded to students that got the most Taongas in their class for the term.

Jasmine, Brianna, Daina, Kana and Danielle would like to wish you all a merry Christmas, and a happy school holidays! Be safe, and we will see you all in February!

Meri Kirihimete me te tau hou hari from the Kiwi Can Team!

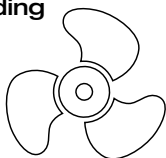
The Coromandel Kiwi Can programme is managed by the Coromandel Independent Living Trust, officially sponsored by Sanford Ltd and supported by The Lion Foundation



## COROMANDEL MARINE ENGINEERING

MARINE ENGINEERING &amp; OUTBOARD SERVICING

- All makes, model & inboards serviced.
- Full computer diagnostics available.
- New & second-hand outboards for sale.
- Retailers for marine products - inc batteries, oils, plugs, Saltaway products.
- Aluminium & stainless welding by Certified Welders.



Telephone  
Workshop/office:  
07 866 8004  
Grant: 028 2580 2351  
Jackson: 021 059 7542

116, The 309 Road, Coromandel - 1km from the main road.



## Coromandel Area School

By Jamie Rose Brown



Welcome to all of our new staff, students and whānau who will be joining Coromandel Area School in 2021. We hope you have had wonderful Christmas with your families. See you all in the new year! Have a safe and happy holiday. Below are the term dates for 2021.

**Term 1, 2021 (11 Weeks)**

**Thursday 4 February:** Year 11-13 students start.

**Friday 5 February:** All students start.

**Coromandel Area School Family Fun Day Friday 5 February 2021**

This is our first official day of school for 2021.

Come and spend some time meeting the teachers and having a bit of fun with your kids! All current and new family members are welcome on the day.

9.00am-10.00am – Full school

powhiri and presentation to whānau by our school principal.

10.00am-11.00am – Classroom visits/ tour of our kura/question and answer time.

11.00am-11.20am – Light morning tea provided.

11.20am-1.20pm – Family fun activities and BBQ lunch provided.

1.20pm-2.00pm – Student lunchtime (students can leave with whānau if they are signed out).

2.00pm-3.00pm – Students back in homeroom and mentor classes.

Bring a picnic blanket and shade (umbrella) as we will be on the fields if the weather is fine. This is a great chance to meet all of the staff and get to know your child(ren)s teacher outside of the classroom. Let's cross fingers for a day of fine weather..

To keep up-to-date with all of the latest announcements and notices. Make sure you like us on Facebook and regularly check our webpage: [www.coromandelarea.school.nz](http://www.coromandelarea.school.nz).

We look forward to an epic 2021.

## Solar School

By Daniel Kirsch, Coromandel Area School Board of Trustees

The sun is the underlying source of all energy on Earth and it's free. It was this month last year that The School Board got solar power installed on the school roofs, and for the past year the school has produced its own solar power. You may have not seen the solar panels yet, but there are a lot of them on various school roofs (153 panels on five roofs)! With our solar system we are able to convert the sun's free energy into electricity. The 2-array rooftops system provides the majority of the school's electricity requirements and is warranted for 25 years. In seven years we will have paid off the investment through power savings alone.

With our system we are able to redirect energy savings into developing a quality learning environment and experience the benefits of sustainable living practices. Live monitoring and educational dashboards provide teachers and students with learning tools to measure energy generation, waste reduction and benchmark with other schools.

Daily solar energy generation is an excellent match for a school's daily electricity consumption pattern, when consumption is highest during peak sunshine hours. However when viewed over the entire year, the school's usage and the sun's strength don't match up quite so well. The school's daily electricity demand is steep in the morning and highest during winter, which is contrary to the solar generation season. Therefore, we have designed a 48.2kW system with half of the panels facing east, to harvest the early morning solar generation. Annual generation is 67 kWh (74% of the school's daytime consumption). Any excess solar energy is currently exported to the grid.

The current system represents Phase 1 in a three-step plan. Phase 2 will be installing additional arrays and back-up batteries so the school has got power even when the grid goes down. The idea is that the school's hall, which is an emergency centre for Civil Defence, could become a powered shelter during times of crisis.

Phase 3 would be to enlarge the system even further, and be able to provide power to other users in town. First and foremost to emergency services – fire, ambulance, doctors – which are all in close proximity to the school, but also to the adjacent swimming pool, as well as to the growing number of electric vehicle users, by installing an EV charge station at the main car park right outside our doors.

Last but not least, the school would like to be able to support families in need by offering solar power at a cheaper rate. The two properties' power meters can be matched up through the local lines company's network, and each time the school's solar system generates more than the school consumes, everyone wins. In other parts of the country solar schools are already doing this. While this is not yet available with PowerCo, our local lines company, they say they are working towards enabling this opportunity.

With its central location and current solar system, as well as the three phase plan, the school is headed to becoming the town's backbone for power in good times and bad, and will help convert the sun's free energy into electricity for all.



Aerial photos courtesy of Daniel Smith

## Coromandel Surface Cleaning

- :Hot & Cold Water Blasting
- :Hot Water Soft Wash
- :Moss Mould & Lichen Treatment
- :Saturated Steam Surface Sanitising

Contact: Aaron 0274 584 044  
or email: [aaron@overline.co.nz](mailto:aaron@overline.co.nz)

## Thinking about a renovation or new build and need some advice?

"Duncan is a very calm, reliable person. He gets on well with others and can see his way through problems or challenges."



call 021-173-7457 or email [duncan@coromandelconstruction.co.nz](mailto:duncan@coromandelconstruction.co.nz)

# Arts



## Coromandel Art Group

By Barbara Peddie

Happy New Year to all!

Our Art Group is in recess at present, but we are gearing up for our February exhibition.

Here is a sneak peek at our joint painting – where we all painted several small canvases with the theme being “gardens”. Each little painting will be available for sale, a great little present or a gift for yourself, and it won’t break the bank!

Look out for our advertisement in the next Chronicle, and we hope to see you in February.

## The Importance of Being Earnest

Dear actors and actresses of Coromandel, your attention please!

Auditions for The Importance of Being Earnest, Oscar Wilde’s hilarious comedy of manners, will be held throughout January/February for a production in April or May. This might be held in a new theatre venue – the Freeman’s Lodge, in an authentic Edwardian staging. Three roles have already been cast.

Please contact Richard and David on 021 0245 5780

## Coromandel Arts Tour

The Arts Tour is over for 2020, but the artists are still here and a number will have their studios open over the summer holiday period. If you’re keen to view some art, look out for flags and signs indicating studios that are open. You can also pick up an Arts Tour brochure from The Source or the info centre. It lists artists’ names and contact details as well as depicting an example of their work. If you want to see any artists in particular, give them a call to see if they are available for a visit.

The website [www.coromandelartstour.co.nz](http://www.coromandelartstour.co.nz), which has a gallery for each artist, is also a great place to find work that interests you, from ceramics and wooden furniture to paintings and drawings in a variety of media.

Enjoy your time in Coromandel!



Nici Greulich

## Coromandel Summer Exhibition and Workshop

Mid January sees the start of a two-week exhibition and a series of diverse and exciting workshops.

These will take place **18-30 January** at Hauraki House.

The exhibition by all of the involved artists will be in the front gallery whilst the workshops will take place in the rear gallery.

These will include: Contemporary landscape painting, with Vaughan Udall; figure sculptures in clay, with Kay Ogilvie; screen printing, with Pete Sephton; and seascapes in pastels with Chris Tryon.

We are all anticipating an exciting two weeks with locals and visitors getting involved.

If you would like more information on any of the workshops please contact the artists below.

Vaughan Udall 021 148 7044. Kay Ogilvie 020 4003 1399, Pete Sephton 027 242 4090, Chris Tryon 027 642 9144 or email [udallvaughan@hotmail.com](mailto:udallvaughan@hotmail.com)



Diann Cade

## Coromandel Christmas Exhibition

**Hauraki House – Coromandel Town open from 10am until 4pm daily until 15 January**

Artists exhibition include: Bronwynne Cornish, Michael Smither, Gian McGregor, Fatu Feu’u, Wailin Elliott, Tom Elliott, Lindsay Garmson, Pamela Annsouth, Anneke Borren, Cindy Alger, Fiona Tunnicliffe, Bev Thatcher, Rod MacLeod, Barbara Von Seida, Mike O’Donnell, Allan Beaver, Tom Folwell, Peter Sephton, Caitlin Moloney, Kim and Kevin Brett, Christy Benton, Kay Ogilvie, Tracy Johnson, Ian Webster, Mike Barton, Jan Kocian, Sam Ireland, Mike Cogswell, Annette Kaye, Raewyn Penrose, Marian Cogswell, Deborah Hide-Bayne, Iain Crichton, Petra Meyboden, Diane Cade, Jan Linklater, Mary Lee, Joanne North, Rex Brett, Jenny Shearer, Sue Pidgeon, Ian Dalzell, Vaughan Udall, Andrew and Jeannie Van Der Putten, Bob Drummond, Chris Tryon, Frederick Church.

### Fundraiser

This year’s exhibition will be hosting a fundraiser for the Colville Community Health Trust. Artists have donated an art piece to be sold by auction via Trade Me.

All details are available at the gallery or search for “Coromandel Christmas Exhibition 2020/21” on Trade Me.

## Hauraki House Art Gallery – Exhibition list

The Christmas Exhibition started in December and will finish up on **15 January**.

**18-30 January** – Exhibition and works by Vaughan Udall

**1-14 February** – The Coromandel Art Group Exhibition

**18 February to 7 March** – 4 Artists Exhibition – Diann Cade, Jan Linklater, Linda Sampson and Jan Panther

**18 to 20 March** – Art Exhibition with performance and dance  
Mark these down in your calendar so you don’t miss them.

If you would like to have an exhibition or hire the gallery please give Raewyn a call on 022 484 9142



# Environment

## Moehau Environment Group

By Nat Munnis

### MEG 20th Anniversary

Help us celebrate MEG's 20th Anniversary and take home a piece of our conservation history.

Twenty years ago, a small group of committed conservationists set out to protect kiwi and native birds in the forests of northern Coromandel and Moehau Environment Group was born! MEG has gone from strength to strength, now co-ordinating stoat trapping over 14,000 hectares, developing areas of intensive rat trapping to help regenerate forests and protecting rare wetland birds with predator control.

MEG runs extensive advocacy and education programmes in schools, communities and summer holiday hotspots.



We are celebrating 20 years of Conservation in the Coromandel with a beautiful commissioned artwork by local artist Pete Sephton. Purchasing one of these limited edition screen prints will put funds towards ongoing predator control for our native birds and look wonderful on your wall at the same time!

Unframed original screen prints are \$100 and will be limited in number to 50. Email [info@meg.org.nz](mailto:info@meg.org.nz) to order.

### MEG Summer Holiday Programme – January 2021

Keltic Fair will see us kick off another MEG Summer Holiday Programme.

Come and have your photo taken with Koru the kiwi, if you can find him, and test your knowledge naming our natives and some naughty non-natives.

We'll be running lots of other activities throughout January like: Meet a Gecko, Build a Wētā Hotel, Putiputi (flax) Flowers, Weedy Wandering, Starlight Cinema, Kiwi by Night, Nature Ramble, I'm an Artist and a



**MEG  
20th  
Anniversary**

Pete Sephton with the one of the limited edition screen prints for MEG 20th Anniversary

Mahakirau Experience, to name a few.

Our official programmes are located at the Coromandel Town Information Centre and all good cafes and accommodation providers.

We'll also be advertising some of our activities on our Facebook page [@moehauenvironmentgroup](https://www.facebook.com/moehauenvironmentgroup).

### Kiwi Aversion Training

If you live or holiday in our area and own a dog it is essential that they have regular Kiwi Aversion training – all dogs, no matter their size, can kill kiwi!

In January we'll be running two Kiwi Aversion sessions in collaboration with DOC and Kiwis 4 Kiwi. These sessions are free to everyone, but bookings are essential.

**13 January** – Waikawau Bay

**21 January** – Papa Aroha

For bookings call Kauaeranga Visitor Centre – (07) 867 9080

Have a great month everyone!

Contact us at [info@meg.org.nz](mailto:info@meg.org.nz) or make a donation by visiting our website [www.meg.org.nz](http://www.meg.org.nz)

## McGregor Bay Wetlands

A few months ago our group decided that it was time to replace the old wetlands sign that had been erected by a previous group trying to restore this local treasure. It made sense to involve pupils from Coromandel Area School in this venture and after a site meeting with five Year 9 volunteers and one Year 1 pupil, a start was made under the guidance of Pete Sephton. Initial research and sketches of wetland animals was completed at the school before moving to Pete's studio on Colville Road for once a week painting sessions. The very talented Year 9 pupils – Rain, Carter, Mitchell, Tai and Marigold – along with five-year-old Tegan have produced a beautiful large new sign filled with colourful wetland animals. Once sealing work is completed we will pick a suitable time to erect the artwork for all to see.



## WELCOME TO COROMANDEL IT'S THE HOLIDAYS!

If you've brought your 'fur-baby' on holiday with you please keep them on a leash.

All dogs, no matter the size, can kill our precious birds.

A part of what makes our home an awesome place to visit is the abundance of wildlife.

Lets keep our **kiwi, dotterel, penguins, pateke ducks** and other natives safe this Summer...

moehau  
environment group  
coromandel  
real kiwi country  
[www.meg.org.nz](http://www.meg.org.nz)

# Environment continued

## Forest and Bird Upper Coromandel

By Kate James



Summer is here and so is the time when more of us can get out and enjoy our local beaches and bush walks. Here are a few important things to think about as you enjoy the beautiful Coromandel:

- Please be thoughtful with your dogs and keep them away from nesting, feeding or roosting birds on beaches. Any size dog can disturb our special native species such as the little (and nationally vulnerable) New Zealand dotterel/tūturiwhatu, pied and variable oystercatchers/tōrea, Caspian terns/taranui, and the amazing godwits/kuaka who migrate here all the way from Alaska. Many native birds nest on our coastal margins and the chicks are especially vulnerable to dog attacks or disturbance. If you see a fenced-off area marked out for nesting birds, even if on a “dogs off leash” beach, enjoy looking at them, take a photo of them, but please do not disturb them.
- Did you know our Coromandel bush has the highest rate for a recovering kiwi population in the country? Our very own taxa (type), the Coromandel brown kiwi, is also the rarest of the brown kiwi taxa. So much hard work and dedication goes into protecting our kiwi. As with our shorebirds, kiwi are sensitive to disturbance from dogs and sadly are often killed by dogs off leashes. Check out the Department of Conservation website for local options for having your dog kiwi avoidance trained and don't take dogs into the bush off their lead.
- Another great thing you can do to protect the environment is to always clean your shoes before and after visiting areas where there

Baby NZ dotterel, Opera Point. Credit John McWilliam



are kauri trees. You can do this at home and most tracks where kauri are found have cleaning stations. These stations contain a brush and a disinfectant for your shoes. The disinfectant does not bleach, stain or damage your shoes, but it could save our kauri forests from the spread of kauri dieback disease. It only takes a minute to ensure your shoes are free from dirt,



Coromandel Brown Kiwi, Mt Moehau. Credit Pim de Monchy

and then give them a spray with the cleaning solution. Brush. Check. Spray. Walk away.

- Finally, Coromandel Kauri Dieback Forum and Coromandel Adventures will be operating a track ambassador programme at the Long Bay Reserve through the Christmas holidays and on weekends until Easter, with free guided walks available daily. Updates and details on bookings will be posted on the Coromandel Kauri Dieback Forum Facebook page.

Enjoy the summer!

## UCLA Conservation Report

By Reihana Robinson UCLA spokesperson

The Upper Coromandel Landcare Association (UCLA), which represents longtime farmers, families and residents of the Upper Coromandel, extends a warm welcome to all of our seasonal visitors and regular fishers, campers and traditional holiday makers who share with us an appreciation for the bush, the mountains and the waters that make the Coromandel so loved.

After one of the toughest years we wish for this summer to be a peaceful time with whanau.

UCLA members have a strong commitment to protect our environment and one of the biggest commitments is for a residual toxin-free region. We support the work of all residual poison-free groups on the Coromandel.

We support all groups working to kaitiaki our lands without the use of cruel poisons, especially Coromandel Our Backyard ([www.coby.nz](http://www.coby.nz)).

We would like to take this time to also thank our local Community Board and Council for their resolve to rid the area of poison 1080 and all residual poisons.

We fully support the work of Mihihara Harrison in Kennedy Bay and the Harataunga Predator Control Group Inc. who are working to create a healthy positive alternative to the Department of Conservation (DOC) and Waikato Regional Council's use of poison 1080 and all residual poisons.

UCLA along with the Harataunga Predator Control group and other landcare groups oppose the socially destructive, expensive and unworkable predator barrier that would cut the Coromandel in two.

In 2021 UCLA and fellow conservationists will be redoubling efforts for a poison-free, lush and healthy environment.

Healthy and happy wishes for a productive 2021 to all.

Kia ora na.

## COROMANDEL PLUMBING

(1986) LTD

1490 Tiki Road, Coromandel

CRAIG DUDSON

Phone/Fax 866 8814  
027 482 1291



**Plumbing, Drainlaying and Gasfitting**

**COROMANDEL**



**BUILDING CENTRE**

**PH: 866 8848**

**"We'll see you right"**



**Small Motor Repairs**

**Come along and see me at  
18 Kapanga Road**

Rob 866 7865 or 021 618 601



# Sport

## Coromandel Golf Club

By Lynne Fenwick

Christmas Tournament, AGM, Special Meetings, Prize Giving, what a busy end to our golfing year.

Our year was interrupted like everyone's by Covid-19. We consider ourselves incredibly fortunate to have a wonderful Golf Course that has recovered well and all of our members are back to play golf again in a safe and friendly environment.

Our Club is run entirely by volunteers, from our wonderful outside course team, catering and bar staff, Club Captains and administration team. We are volunteers and



we celebrated again this year with our annual Volunteer Thank You Day.

From all of the Coromandel Golf Club members, we would like to wish everyone in our community a safe and Happy Christmas.

The Golf Course will be open throughout the summer for visitors. We have clubs, trundlers and golf carts available for hire. Please bring your family and friends out for a game of golf or come along yourself if you are keen to try golf. Summer is a lovely time of year to learn or get back into the game. Try early mornings or late afternoon. It's



a great time to fit in nine holes and you are very welcome on our course.

Green fees are just \$25.00 per round. Phone Lynne on 021 079 9349 to book your cart or to find out more information.

## Coromandel Recreational Fishing Club

By Sharon Toms & CRFC Committee

Happy New Year!

The club had a great Christmas Party and prize-giving is as follows:

### Senior trophies

Snapper – 9.150kg – Troy Evans  
Kingfish – 18.920kg – Christy Benton  
Heaviest Female Fish overall – Kingfish – 18.920kg – Christy Benton  
Trevally – 0.737kg – Allen McNeil  
Heaviest Male Fish overall – Snapper – 9.150kg – Troy Evans  
Kahawai – 2.521kg – Talei Russek  
Most meritorious Kingfish – 18.920kg – Christy Benton  
Most meritorious Snapper – 4.370kg – Maree Hobern

### Junior trophies:

Kahawai – 2.530kg – Layke McNeil  
Trevally – 3.170kg – Keysha Hobern  
John Dory – 2.295kg – Ryan Debenham  
Yellow Tail – 0.205kg – Charlee-Rose Moore  
Parore – 1.235kg – Layke McNeil  
Kingfish – 10.355kg – Layke McNeil  
Snapper – 6.075kg – Layke McNeil  
Heaviest fish overall – Kingfish – 10.355kg – Layke McNeil

The Club "Fish of the Month Competition" for the \$100 prize is for the August 2020 – July 2021 current members only. Fish of the Month for January is snapper. Congratulations to Layke McNeil who won FOM for November with John Dory weighing 3.110kgs.

Our first tournament for 2021 will be on Anniversary Weekend, **Saturday 30 January**. Entry forms can be picked up from Wyuna Studios, Fish & Dive, or email us [coromandelfishingclub@gmail.com](mailto:coromandelfishingclub@gmail.com).

Here's to tight lines as always.

## Coromandel Croquet Club

By Kaye Anderson



Our first game of the year will be on **Tuesday 5 January**. If you're visiting Coromandel during the holiday season and would like to join us for a game, phone Lyn on 027 466 2661 or Kaye on 021 209 3775.

We meet on Tuesdays and Fridays at 9.15am for a 9.30am start. New members are always welcome. If you are keen and need more information, call Kaye on (07) 866 8968. Otherwise just come along on a Friday. The club is situated in Woollams Ave next to the Bowling Club



## Coromandel Golf Club welcomes you to Summer Golf

*Play one of the best kept courses on the peninsula*

**Carts to hire \$35.00 per round**  
**Green Fees \$25.00 per round**  
**Clubs also available**



**Twilight Golf will start in 2021**

**Carts must be booked with Club Secretary on 021 079 9349**

## PENINSULA ELECTRICAL SERVICES LTD

Commercial & Domestic Electrical Contractors



**RAVINDER & SUE RAJ**

Registered Electrical Inspector

P.O. Box 109

Coromandel

Telephone (07) 866 8166

Free Phone: 0800 4 Electrical (0800 435 328)

E-mail: [ravinder@e3.net.nz](mailto:ravinder@e3.net.nz)

1750 S/H 25

Coromandel

Fax (07) 866 8162

Mobile (0274) 738 734

# Classifieds

Classifieds cost 30 cents per word – please email your words to [corochronicle@gmail.com](mailto:corochronicle@gmail.com) or call/txt Debbie on 021 235 6648.

## PROFESSIONALS

**123 IT COROMANDEL.** Here to assist you with your phone, tablet, computer and smart TVs setup, how to use them and how to resolve any problems. Call Benjamin on 022 631 9252.

**A COROMANDEL PLASTERER.** For new homes and all renovation requirements I offer 25+ years' experience for a professional plastering finish. Doug Marsters 022 019 9255.

**ABBY'S HEALING HAVEN** 021 352 486. \*Therapeutic and relaxation massage therapy 1 hour \$80, 90 mins \$110 \*Pranic Healing-Chakra and energy clearing and balancing 90 minutes \$110 \*TBT- Trauma busting treatment, an effective process for trauma and symptoms of PTSD, 60 minutes \$80 \*Organic skincare and makeup consultations- Organic Ayurvedic facial massage 30 minutes \$45.

**AFFORDABLE DESIGN** for print and web. For businesses and artists. Tuition in Photoshop and Indesign available. Jacqui 022 392 8588.

**ALL ASPECTS OF TREE WORK** done professionally. Coromandel based Dynamic Tree Care. Call today 027 451 2224 or (07) 866 8177.

**BEGINNER YOGA WITH BECKS** Tuesdays at the Anglican Church Hall, 170 Tiki Rd, 5.30pm to 6.45pm, \$10. All welcome, equipment provided. Phone 027 407 0079 for more info, [www.rebeccaleaker.com](http://www.rebeccaleaker.com). First class for 2021 on 12 Jan.

**BICYCLE REPAIRS,** servicing & sales. Find some of my bikes on my FB page (Miles Watson recycled bicycles & repairs). I can also pick up old bikes and parts from your house. 020 4150 6575.

**BRICK AND BLOCK LAYING SPECIALISTS.** L.B.P. Phone Joel 021 0234 0210.

**BROKEN GLASS?** Call Mike Coromandel Glass (07) 866 8869.

**CARPENTER WANTING WORK.** Alterations, new houses, additions, no job too small, licensed building practitioner. Ph 021 675 575.

**COLVILLE LAWNS.** Property maintenance. Lawns mowed, edge trimming, chainsaw and scrub bar work, weed control, tree planting, gardening, loads to refuse station. [colvillelawns@gmail.com](mailto:colvillelawns@gmail.com). txt 021 0264 1000. Seamus.

**COMPUTER FIX.** Your local support and expert for computer repairs, upgrades, backup solutions, virus removal, software problems, purchase advice or tuition. Micha Wellnitz, ph (07) 866 8932.

**COROMANDEL CATTERY** (07) 866 8117, 027 433 1665.

**COROMANDEL GARAGE DOORS** For new door installations, auto openers and full maintenance service. Ph: Don McLean 022 453 2188. E: [corogaragedoors@gmail.com](mailto:corogaragedoors@gmail.com).

**COROMANDEL HONEY LTD.** Local beekeepers. Honey for sale and manuka sites wanted. Call Evan on 021 533 826.

**GIB STOPPER - RICHARD FIELD.** Local and coastal. Ph 029 778 8645.

**GIB STOPPER/PAINTER** Alpha Drywall, Geoff, local 022 027 0290.

**HEALING AND MUSCULAR PAIN RELIEF** via Massage, call Peter 027 263 2521 for appointment.

**MOBILE SHEEP SHEARING** call AJ 027 499 1448.

**MUSIC RECORDING** Professionally record your original songs and compositions with Matt Sephton Pristine sound, release ready mixes, right here in Coromandel [www.corosoniclab.co.nz](http://www.corosoniclab.co.nz).

**NEED A PAINTER?** quality work for a fair price, no bullshit quotes and I can do your garden too. Ring Thomas on 028 400 4120.

**POOL QUEEN LTD** Mobile Pool & Spa services Coromandel Peninsula. Call the Pool Queen to have your pool clean. Sharleena Tucker 027 316 3384.

**RANCH SLIDER WON'T SLIDE?** Call Mike Coromandel Glass (07) 866 8869.

**ROOF KING LTD** New roofs, re-roofs, leaks, spouting, downpipes, and general maintenance. Ph Eli 021 160 6790.

**PIG HUNTERS.** Pig and mutton, rolled and seasoned \$40. Phone Ernie 021 0261 7945.

**SEWING ALTERATIONS/REPAIRS.** Over 30 years' experience, industrial machines, same day service available. Ph Pamela 021 122 9587.

**SOLAR SYSTEM DESIGN & INSTALL** Good Energy your local solar specialists based in Whitianga. Ph Simon 021 242 3394.

**STUMPGRINDING** – Machine assisted stump removal, all sizes all areas. Ph 027 472 6627.

**WATER RESTRICTIONS SOLVED.** Call or text Willie 027 497 8832 for a free quote for tank and installation. So you can keep on watering. Stormwater Resources – find us on Facebook.

**WINDOW CATCH BROKEN?** Call Mike Coromandel Glass (07) 866 8869.

## FOR SALE

**FIREWOOD** phone Ross 021 395 900.

## FOR RENT/HIRE

**A&JS STORAGE** Totalspan units Ph Judy 021 071 2252.

**SHOP / OFFICE / STUDIO.** Main Street location. Very tidy, partly carpeted, Air condition unit. For rent or lease. Phone 027 422 3272.

**SOUND SYSTEM FOR HIRE.** Loud and clear sound for any event. [matt@corosoniclab.co.nz](mailto:matt@corosoniclab.co.nz) 021 043 8689.

## SITUATIONS VACANT

**VOLUNTEER COORDINATOR** (part time) required for CILT. Please see our website <https://www.cilt.org.nz/vacancies/>

## WANTED

**VEHICLES WANTED.** Cars, trucks, vans, utes, 4X4's. Wanted dead or alive. \$ Top cash paid \$. Phone 0800 505 099.

**WANTED ALL LIVESTOCK** We inspect in the paddock. Also we transport every Thursday to Waikato's largest saleyards in Morrinsville. Phone Dave Coatsworth 027 481 7100.

## WORK WANTED

**DYNAMIC TREE CARE** - Council approved professional local arborist service for all tree work. Fully qualified, equipped and insured. Health and Safety compliant. Free quotes. Jobs large or small. Professional chainsaw sharpening. Call now (07) 866 8177 or 027 451 2224.

**STUMPGRINDING** – Machine assisted stump removal, all sizes all areas. Ph 027 472 6627.

**TREE SERVICE.** Dismantling or pruning. Free quotes. Call Jeremy Haszard 027 421 0603.



## Advertisers' directory

Company	page
360 Discovery Ltd	17
Alpha Drywall	11
Ann Kerr-Bell – Natural Medical Centre	26
Aotea Hairdressing	20
Cape Civil	12
CFM	23
Chorus	18
Christina Wu Acupuncture	4
Clay Day	14
Coro Gym	11
Coromandel Construction	31
Coromandel Garage Ltd	14
Coromandel Golf Club	35
Coromandel Independent Living Trust	10,19
Coromandel Marine Engineering	30
Coromandel Marine Farmers' Association	15
Coromandel Oyster Company	3
Coromandel Plumbing (1986) Ltd	34
Coromandel Quarry Ltd	7
Coromandel Refrigeration	40
Coromandel Surface Cleaning	31
Dynamic Tree Care	26
Erica Lyons	5
Fagans Flooring Xtra	24
Good Energy	28
Harcourts	21
Hauraki Taxation Service Ltd	27
Himalaya Shop	4
ITM	34
James and Turner	6
James Drainage '97 Ltd	25
Johnston Fencing	16
LK & JA Gordge	12
Llandem Consulting Engineers Ltd	19
Lynley Ogilvie – massage therapist	7
Mana	27
Moehau Environment Group	33
Papa Aroha Engineering	20
Peninsula Electrical Services Ltd	35
Purnell Lawyers	6
Richardsons Real Estate	8-9
Rob's Small Motor Repairs	23,34
Ruamahunga Bay Joinery	22
Scott Revell Building Contractor	10
Scott Simpson MP	24
Star & Garter	15
TCDC	13
Te Korowai Hauora o Hauraki	11
The Waterworks	29
Trinity Network	39
Twentymans	16
Waikato District Health Board	7,25
Waitaia Nursery	16
We Pay Top Cash	20

## Coromandel Town weekly and monthly meetings

## Every Day

Free meditation at Mahamudra (except during silent retreats) ..... 8.30-9am

## Every Monday

Step Aerobics at Coro Gym ..... 8am

Coromandel Hikers' Group, Hauraki House, Colin & Elspeth (07) 866 7137 ... 9am

Monday Walkers, Woollams Ave car park north end, Irene 021 157 8408 ..... 9am

Gold Fit at Coro Gym ..... 9.30am

Coromandel Playgroup, St Andrews Church Hall, Rings Road.

Contact Angee 021 255 0399 ..... 9.30am-12.30pm

SeniorNet Coromandel contact Loes (07) 866 8053 ..... 4pm

Bridge, St John rooms ..... 7pm

Four-part harmony singing, Sue (07) 866 8833 ..... 7.30pm

## Every Tuesday

Croquet, Woollams Ave, Kaye (07) 866 8968 ..... 9.15am

Pastel Artists Coromandel, Coro Aero Club Rooms (07) 866 7220 ..... 9am-12pm

Coro Walking Group, Lotto Dairy, Ruth (07) 866 7246 ..... 9am

Open Floor Community Dance, Citizens' Hall

(\*come 15mins early if you're new or would like a longer warmup) 9.30\*-11.30am

Yoga for everyone, Colville Hall, Kate 021 125 3152 ..... 10am

Playcentre, Woollams Ave ..... 10.30am-1pm

Beginner Yoga with Becks, at the Anglican Church Hall, 170 Tiki Rd, \$10.

Contact 027 407 0079 ..... 5.30-6.45pm

Coro Motorcycle Club, Star & Garter, John 027 234 1013 ..... 7-9pm

## Every Wednesday

Step Aerobics at Coro Gym ..... 8am

Gold Fit at Coro Gym ..... 9.30am

Ballet Class For Adults, Coromandel Citizens' Hall, \$10 per class.

Contact Marilyn 027 336 5263 ..... 9.50-11.20am

Wing Chun Kung Fu. Internationally recognised Sifu. Waikato Events Centre.. 4pm

## Every Thursday

Coro Walking Group, Lotto Dairy, Ruth (07) 866 7246 ..... 9am

Coro Bowls club day ..... 9.30am

Coromandel Community Organic Garden volunteers' drop-in time ..... 9-11am

Coro Art Group, St Andrew's Church Hall, Val (07) 866 8911 ..... 9am-12pm

Tai Chi, Waikato Events Centre (above the swimming pool) ..... 10am

Free Guided Meditation, Havalona Pyramid ..... 10-11am

Yoga, Move & Relax at Trust Waikato Events Centre (upstairs Swimming

Pool) contact Tina 021 201 9750 ..... 5.10-6.20pm

Zumba class every Thursday (school term only), Coromandel Area School Hall,

Claire 021 653 650 ..... 5.30-6.30pm

Sunset Yoga with Vanessa, Colville School Hall, \$10. School Term only.

Contact 021 124 7267 ..... 5-6.15pm

## Every Friday

Step Aerobics at Coro Gym ..... 8am

Yoga for everyone, Anglican Hall, Kate 021 125 3152 ..... 9am

Croquet, Woollams Ave, Kaye (07) 866 8968 ..... 9.15am

Playcentre, Woollams Ave ..... 9.45am-12.15pm

Coromandel Home-school group, Julene (07) 866 8333 ..... 10am

Coromandel Tennis Club "club day" ..... 4pm

Coromandel Flying Club social gathering, all welcome ..... 5.30pm

## Every Saturday

RSA Coromandel, RSA Club Rooms Woollams Ave. Courtesy van available.

President Kevin Stone (07) 866 7576 (except 9, 16 and 23 January) ..... 3.30-7pm

## Every Sunday

Anglican Church Service ..... 10am

Coromandel Tennis Club "club day" ..... 1pm

## Monthly

**1st Mon** – Coro Patchwork & Quilters, St John rooms,

Jill (07) 866 7484 ..... 9.30am-3.30pm

**3rd Mon** – Coro Patchwork & Quilters, St John rooms,

Jill (07) 866 7484 ..... 9.30am-3.30pm

**1st Wed** – Coro Embroiderers' Guild, St John rooms,

Win McMinn (07) 866 7508 ..... 10am-3pm

**1st Wed** – Lions Dinner meeting, St John rooms.

President Sue Hughes 07 211 9774 ..... 6pm

**1st Fri** – Gay Social Group, ph Roz 022 308 8975 ..... 7pm

**2nd Wed** – Garden Circle. Jeni Mudgway 021 0227 5341 ..... 1pm

**2nd Tues** – Meditation Discussion Group, ph Roz 022 308 8975 ..... 7pm

**3rd Wed** – Lions Business Meeting, St John rooms.

President Sue Hughes 07 211 9774 ..... 7pm

**Last Thurs** – Green Drinks at Star & Garter ..... 5pm

**1st & 3rd Sun** – Church Service at St Andrew's Church, Rings Road ..... 10am

If your meeting has been omitted, please email Debbie at  
corochronicle@gmail.com with the subject "meeting" or  
txt/ph 021 235 6648. Please include contact name and phone number.

MON

TUE

WED

THU

FRI

SAT

SUN

### Make sure your event gets listed

To get your event listed, email the details, your name and contact phone number to Debbie at [corochronicle@gmail.com](mailto:corochronicle@gmail.com) with the subject "event". Or post to Jude Publishing, PO Box 148, Coromandel. There is limited space available and will be published subject to space availability, with preference to not-for-profit groups.

Tide times and heights from Land Information NZ and are for Coromandel Harbour.

For Thames times -15min High and -18min Low.



Blue bin bags out



Put recycling out

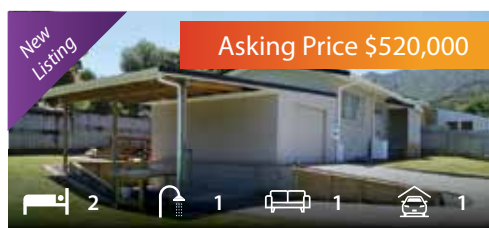
RN = Rural North

CT = Coromandel Town & Te Kōuna,

TC = Thames Coast & Maniaia

<p>4</p> <p>Public Holiday observed</p> <p>High tide 11.46am (2.9m) Low tide 5.23am (0.4m), 5.57pm (0.5m)</p>	<p>5</p> <p> </p> <p>High tide 12.11am (2.7m), 12.34pm (2.8m) Low tide 6.10am (0.4m), 6.46pm (0.5m)</p>	<p>6</p> <p> </p> <p>High tide 1am (2.7m), 1.24pm (2.8m) Low tide 7.02am (0.5m), 7.38pm (0.5m)</p>	<p>7</p> <p>High tide 1.53am (2.6m), 2.18pm (2.8m) Low tide 7.58am (0.6m), 8.34pm (0.5m)</p>	<p>8</p> <p> + glass RN</p> <p>Coromandel Home grown /made market 8.30am -12.30pm Guru Puja with Tsog, I'eam, and 7 Day Silent Meditation Retreat starts at Mahamudra January Relax Weekend starts at Mana (see ad Pg 27)</p> <p>High tide 2.52am (2.6m), 3.15pm (2.7m) Low tide 9am (0.6m), 9.32pm (0.5m)</p>	<p>9</p> <p>High tide 3.56am (2.6m), 4.14pm (2.7m) Low tide 10.03am (0.6m), 10.34pm (0.5m)</p>	<p>10</p> <p>High tide 5.01am (2.7m), 5.16pm (2.7m) Low tide 11.06am (0.6m), 11.35pm (0.4m)</p>
<p>11</p> <p>Coromandel Community Preschool reopens for 2021 (see Pg 28) Sufr Retreat starts at Mana (see ad Pg 27)</p> <p>High tide 6.03am (2.8m), 6.17pm (2.7m) Low tide 12.06pm (0.5m)</p>	<p>12</p> <p> </p> <p>Coromandel Budget Advisory Service reopens for 2021 (see Pg 6)</p> <p>High tide 7.01am (2.9m), 7.17pm (2.8m) Low tide 12.35am (0.4m), 1.03pm (0.5m)</p>	<p>13</p> <p> </p> <p>CLT reopens for 2021 (see Pg 18) Kiwi Aversion Training, Waikawau Bay (see Pg 33)</p> <p>High tide 7.55am (3.0m), 8.13pm (2.8m) Low tide 1.30am (0.3m), 1.57pm (0.4m)</p>	<p>14</p> <p>High tide 8.46am (3.0m), 9.06pm (2.8m) Low tide 2.23am (0.2m), 2.50pm (0.4m)</p>	<p>15</p> <p> + glass RN</p> <p>Coromandel Christmas Exhibition ends (see Pg 32) Coromandel Home grown /made market 8.30am -12.30pm</p> <p>High tide 9.35am (3.0m), 9.55pm (2.8m) Low tide 3.12am (0.2m), 3.40pm (0.4m)</p>	<p>16</p> <p>Coromandel Seasonal Market (see Pg 16)</p> <p>High tide 10.22am (3.0m), 10.42pm (2.8m) Low tide 3.58am (0.3m), 4.28pm (0.4m)</p>	<p>17</p> <p>St Andrews – John Rabarts HC An introduction to Qi Gong at Mana (see ad Pg 27)</p> <p>High tide 11.08am (2.9m), 11.27pm (2.7m) Low tide 4.43am (0.4m), 5.15pm (0.5m)</p>
<p>18</p> <p>DEADLINE: Coromandel Town Chronicle February issue Coromandel Summer Exhibition and Workshop starts (see Pg 32)</p> <p>High tide 11.52am (2.8m) Low tide 5.26am (0.5m), 6pm (0.5m)</p>	<p>19</p> <p> </p> <p>High tide 12.10am (2.6m), 12.36pm (2.7m) Low tide 6.10am (0.6m), 6.44pm (0.6m)</p>	<p>20</p> <p> </p> <p>High tide 12.53am (2.5m), 1.21pm (2.6m) Low tide 6.56am (0.7m), 7.28pm (0.7m)</p>	<p>21</p> <p>Kiwi Aversion Training, Papa Aroha (see Pg 33) Caravan of Mystery at Mana (see ad Pg 27)</p> <p>High tide 1.38am (2.4m), 2.06pm (2.5m) Low tide 7.44am (0.8m), 8.15pm (0.7m)</p>	<p>22</p> <p> + glass RN</p> <p>Coromandel Home grown /made market 8.30am -12.30pm 7 Day Silent Meditation Retreat starts at Mahamudra</p> <p>High tide 2.26am (2.4m), 2.53pm (2.4m) Low tide 8.37am (0.8m), 9.04pm (0.8m)</p>	<p>23</p> <p>High tide 3.20am (2.3m), 3.43pm (2.4m) Low tide 9.33am (0.9m), 9.57pm (0.8m)</p>	<p>24</p> <p>High tide 4.18am (2.3m), 4.35pm (2.3m) Low tide 10.28am (0.9m), 10.51pm (0.8m)</p>
<p>25</p> <p>High tide 5.15am (2.3m), 5.29pm (2.3m) Low tide 11.23am (0.9m), 11.45pm (0.8m)</p>	<p>26</p> <p> </p> <p>High tide 6.09am (2.4m), 6.22pm (2.4m) Low tide 12.13pm (0.8m)</p>	<p>27</p> <p> </p> <p>Coromandel Worker Council public event at the Citizens' Hall (see Pg 15)</p> <p>High tide 6.57am (2.5m), 7.13pm (2.5m) Low tide 12.35am (0.7m), 1pm (0.8m)</p>	<p>28</p> <p>High tide 7.43am (2.6m), 8.02pm (2.6m) Low tide 1.22am (0.6m), 1.47pm (0.7m)</p>	<p>29</p> <p> + glass RN</p> <p>Coromandel Home grown /made market 8.30am -12.30pm Mindful Self Compassion at Mana (see ad Pg 27)</p> <p>High tide 8.27am (2.8m), 8.49pm (2.7m) Low tide 2.07am (0.5m), 2.32pm (0.6m)</p>	<p>30</p> <p>Anniversary Weekend Fishing Tournament (see Pg 35) Barry Brickell Play With Clay Day (see Pg 6)</p> <p>High tide 9.10am (2.9m), 9.35pm (2.8m) Low tide 2.51am (0.4m), 3.18pm (0.5m)</p>	<p>31</p> <p>High tide 9.55am (3.0m), 10.20pm (2.9m) Low tide 3.35am (0.3m), 4.04pm (0.4m)</p>

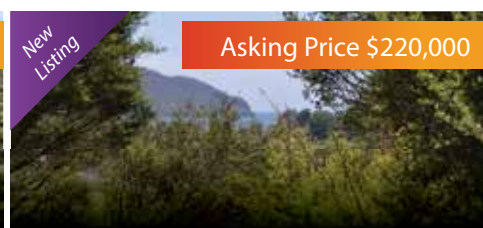




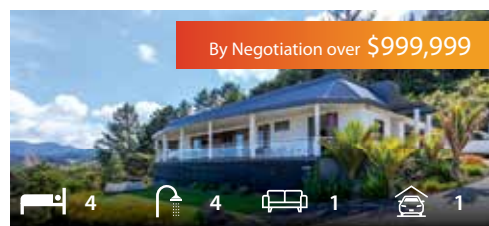
**Coromandel, 2065 Rings Road (Unit)**  
Download infopak: [www.trinitynetwork.co.nz/136792/](http://www.trinitynetwork.co.nz/136792/)



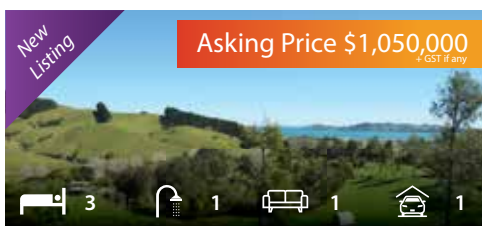
**Coromandel, 2065 Rings Road (Section)**  
Download infopak: [www.trinitynetwork.co.nz/136791/](http://www.trinitynetwork.co.nz/136791/)



**Kennedy Bay, 1128 Kennedy Bay Road**  
Download infopak: [www.trinitynetwork.co.nz/136800/](http://www.trinitynetwork.co.nz/136800/)



**Coromandel, 100 Main Street**  
Download infopak: [www.trinitynetwork.co.nz/136766/](http://www.trinitynetwork.co.nz/136766/)



**Coromandel, 77 The 309 Road**  
Download infopak: [www.trinitynetwork.co.nz/136762/](http://www.trinitynetwork.co.nz/136762/)



**Coromandel, 201 Te Tiki Street**  
Download infopak: [www.trinitynetwork.co.nz/136650/](http://www.trinitynetwork.co.nz/136650/)



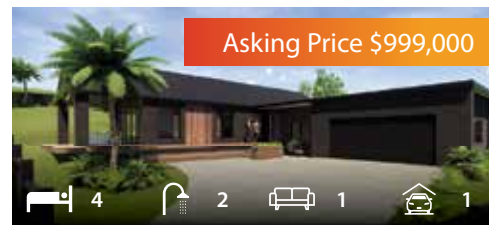
**Coromandel, 1 Cherry Lane**  
Download infopak: [www.trinitynetwork.co.nz/136739/](http://www.trinitynetwork.co.nz/136739/)



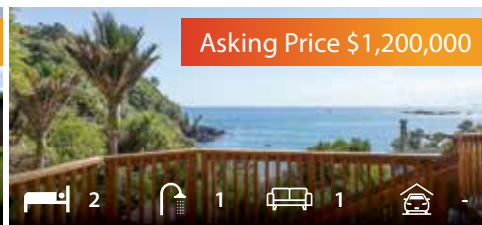
**Coromandel, 5 Cherry Lane**  
Download infopak: [www.trinitynetwork.co.nz/136741/](http://www.trinitynetwork.co.nz/136741/)



**Coromandel, 81 Greenhills Drive**  
Download infopak: [www.trinitynetwork.co.nz/136743/](http://www.trinitynetwork.co.nz/136743/)



**Coromandel, 83 Greenhills Drive**  
Download infopak: [www.trinitynetwork.co.nz/136747/](http://www.trinitynetwork.co.nz/136747/)



**Little Bay, 8 Louise Lane**  
Download infopak: [www.trinitynetwork.co.nz/136689/](http://www.trinitynetwork.co.nz/136689/)



**Coromandel, Copperworkx**  
Download infopak: [www.trinitynetwork.co.nz/136786/](http://www.trinitynetwork.co.nz/136786/)

*"Have a Safe and Enjoyable New Year"*



**Rob Keatley**

M : 0275 777 424

E : [rob.keatley@trinitynetwork.co.nz](mailto:rob.keatley@trinitynetwork.co.nz)

*"I value people, not just transactions"*



**Coromandel, 11 The 309 Road**  
Download infopak: [www.trinitynetwork.co.nz/136671/](http://www.trinitynetwork.co.nz/136671/)



**Coromandel, Top Town Takeaways**  
Download infopak: [www.trinitynetwork.co.nz/136753/](http://www.trinitynetwork.co.nz/136753/)

**Trinity Network Commission 2.5% up to \$500,000 and 1.8% there after + GST**



# perfect AIR

PERFECT PRODUCTS | PERFECT SERVICE | PERFECT AIR

## Air Conditioning, Ventilation & Heat Pumps



# Summer Deals



53QHB026  
Small Room System

Cooling 2.5 (0.5-3.1) kW  
3.5 star rating  
Heating 3.1 (0.6-4.2) kW  
4.5 star rating

Fully Installed Price:

**\$1782** Incl GST\*



FTXV25UVMA  
Small Room System

Cooling 2.5 (0.9-3.7) kW  
4.5 star rating  
Heating 3.2 (0.9-5.3) kW  
5.0 star rating

Fully Installed Price:

**\$2199** Incl GST\*



53QHB050-1  
Medium Room System

Cooling 5.05 (2.3-6.03) kW  
3.5 star rating  
Heating 5.35 (1.4-6.05) kW  
4.5 star rating

Fully Installed Price:

**\$2454** Incl GST\*



FTXV50UVMA  
Medium Room System

Cooling 5.0 (1.1-6.7) kW  
3.0 star rating  
Heating 6.0 (1.0-8.0) kW  
3.5 star rating

Fully Installed Price:

**\$3199** Incl GST\*



53QHB070  
Large Room system

Cooling 7.0 (1.5-8.0) kW  
4.5 star rating  
Heating 7.8 (1.8-8.6) kW  
2.5 star rating

Fully Installed Price:

**\$2916** Incl GST\*



FTXV71UVMA  
Large Room System

Cooling 7.1 (2.0-8.9) kW  
2.0 star rating  
Heating 8.0 (2.0-10.6) kW  
3.0 star rating

Fully Installed Price:

**\$3999** Incl GST\*



## Am I eligible for a Warmer Kiwi Homes grant?



Warmer Kiwi Homes is a Government programme offering grants covering 90% of the cost of a Heat Pump for the main living area (capped at \$3000), after ceiling and underfloor insulation is done.



\*Conditions apply. Prices available until Feb 28 2021 or while stocks last. Split system prices are based strictly off a Back to Back installation. Installations include electrical connection and electrical certificate of compliance.. A free no Obligation onsite quotation is available.  
www.perfectair.co.nz

30 Campbell street Whitianga

# 07 866 4140