

July 2017
Volume 21 Issue 7

Coromandel Town Chronicle

Founded and owned by the Coromandel Business Association since 1996

FREE
Community Magazine

Care of Colville Harbour

SEE PAGE 4



Bowls Gold Award PG 10



Regional Day PG 15



Creative Play PG 24





GREAT Low Prices

FROM SUE AND THE TEAM AT
LK COROMANDEL

MIX & MATCH

2 FOR \$25

CORUBA & COLA
5% 330ML 4 PK



CAPTAIN MORGAN & COLA
5% 330ML CAN - 6 PK



WILD TURKEY & DRY / COLA
5% 340ML - 4 PK



BILLY MAVERICK
12 PACK

\$22.99



OR TWO FOR \$40

JIM BEAM
1L

\$49.99



PLUS 2 X COKE 1.5L RANGE + BAG OF ICE

STEINLAGER CLASSIC
24 PACK

\$39.99



ADD A STUBBY HOLDER TO KEEP YOUR BEER COLD AND YOUR HAND WARM FOR JUST \$5!

1 FOR \$16.99

3 FOR \$45.00

ADD ANY COKE CLASSIC 1.5L FOR \$42.99!



CAPTAIN MORGAN DARK / SPICED

\$39.99

WITHER HILLS PINOT NOIR

\$22.99



OR TWO FOR \$40

THE NED & LEEFIELD STATION
SAUVIGNON BLANC, PINOT GRIS, ROSÉ



DID YOU TRY US AT PEPPERTREE WINE NIGHT ON THE 29TH JUNE? EMAIL US AT COROMANDEL@LK.CO.NZ TO STAY IN THE LOOP ABOUT UPCOMING WINE NIGHTS

10 PACK

LONG WHITE VODKA

\$22.99



MULLED CIDER RECIPE

1.25L CIDER – SPEIGHT'S APPLE CIDER \$8.99
2X WHOLE CLOVES
1 X CINNAMON STICK
1 ORANGE, THINLY SLICED
1 T HONEY
SPASH OF SPICED RUM (OPTIONAL)
BRING TO THE BOIL AND ENJOY!



LK COROMANDEL, PART OF THE COMMUNITY SINCE 1984
35 WHARF ROAD, COROMANDEL TOWN. PH (07) 866 8380

SAVE TIME, SHOP ONLINE! HEAD TO WWW.LK.CO.NZ

You must be 18 years or older to purchase. Only available in LK Coromandel store. Promotion is available from 23/06/17 – 27/07/17. The Promoter is Lion Liquor Retail, 27 Napier Street, Freemans Bay, Auckland 1011



Cheers!

cheers.org.nz

Coromandel Town Chronicle

Cover picture:

The group of volunteers who did tree planting on the Colville foreshore

The *Coromandel Town Chronicle* is published by Jude Publishing Ltd on behalf of the Coromandel Business Association. It is delivered free to the Coromandel area.

Jude Publishing Ltd
PO Box 148, Coromandel 3543
www.coromandeltownchronicle.co.nz

If you have any news stories that you'd like included please email corochronicle@gmail.com or post to PO Box as above.

If you are not sure how to put an article together for publication then find tips and advice on the website: www.coromandeltownchronicle.co.nz/html/guidelines.html

For advertising please email Debbie on corochronicle@gmail.com or phone 021 235 6648

The Coromandel Town Chronicle is printed with vegetable oil based inks by Print House Ltd, Hamilton. An accredited FSC and PEFC printer. Enviromark Bronze certified.

Coromandel Business Association's Mission Statement: To support business, partnering with our community board, to strengthen and encourage the development of Coromandel Town and environs.

Want to support the CTC?
Live out of town? You need an annual subscription.

\$40 (incl. GST) NZ postage only.
See contact details above.

Deadline for the next issue is 4pm Monday 17 July

Disclaimer: The publisher and its editors of the *Coromandel Town Chronicle* shall not be responsible in any way for opinions expressed in letters and articles contained in the *Coromandel Town Chronicle* or for loss or damage suffered by anyone in reliance upon the information contained therein. Further, no endorsement of any product or service featured or advertised in the *Coromandel Town Chronicle* should be implied or assumed.

Coromandel Business Association Disclaimer: The opinions of the editor do not necessarily reflect the opinion of the Coromandel Business Association. The Chronicle should be representing all parties and showing a cross section of feedback from the community and we believe this to be the case. The editor of any publication is entitled to a personal opinion and provided this is identified as such then this is acceptable to us.

ISSN 1178-721X (Print)
ISSN 1179-4895 (Online)

Editor's comment

Has anyone been watching "What Next NZ" which has been on TV this week that I have been doing production of the Chronicle? It has looked at where we want to head in the next 20 years, about how some jobs will cease to exist and new ones created, the role technology will play, about the environment and climate change, and what we need in education in this age. It was certainly interesting to watch and participate in.

It was inspiring to hear stories of how different businesses are responding to a changing world and made me think of my own place in it, especially with regard to giving back into the community and also to do with sharing so we don't need so much "stuff". I already give 40% discount to charities/not-for-profit groups for advertising in the Chronicle, but maybe I could do more. I would also like to see a sharing scheme in our community or a "library of things".

I am interested in your thoughts as to how we can use the points raised in this programme to better our community and our own future.

Debbie

Correction

The article on the Seafood Fest in the June issue was actually written by Tracey Wykes, not Gail London. Apologies for the incorrect byline.

Coromandel Business Association policy:

The purpose of the Coromandel Town Chronicle is to showcase the region and its people. The Coromandel Town Chronicle is open for everyone to contribute, however the editor reserves the right to select the articles, advertisements and letters that are published in line with the Coromandel Town Chronicle's publication policy.

Letters

Great town

Dear Debbie,

Hi from over the hill-in Whangamata. Popped up to see Coro in May, first time in 20 years. Stayed at the Top 10, tried to get a ticket to Spreading Out but it was full. Loved the town, you've really come of age. Stunning buildings, lots of room, excellent food. Also really enjoyed the Chronicle; nice to see such input from the town. Congratulations to you all and I promise I won't take another 20 years to visit again.

Shaun Fay, Whangamata

Road improvement?

Dear Editor,

After two months of mess, noise, delays and hassle regarding the road repair on Rings Rd, it has now become a precarious ride for us cyclists between Beech and Lillis Lane.

Twice now I have encountered a "too close for comfort" situation, caused by a car with boat trailer, or two wide/heavy vehicles passing, leaving no room for a cyclist.

This situation could be avoided previously, before the "road improvements", by simply swerving my bike to the left hand side onto the grass verge. Now this option has gone.

The middle of the road has been heightened by a significant amount, resulting in the sides sloping dangerously steep down all the way from Beech Lane to Buffalo Road. There is no chance to veer into the verge anymore.

Cycling on, there has been a fancy concrete kerb created between Buffalo and Lillis Lane, which also prevents any cyclist from dodging to the left to get out of harm's way.

Furthermore cars now seem to speed up along this new stretch of road, taking advantage of the improved stretch of tarseal.

Add to that the fact that there are a few bends along that whole stretch and you'll get the picture.

I wonder what kind of consultation was done beforehand on this roading work, plus the sense and engineering skills behind this whole expensive project? Apparently it was only done to improve the drainage situation, which never really raised any concern in the first place.

It has now become a dangerous stretch of road which Coro rate payers had to foot the bill for.

I will from now on only use the pedestrian track, as accidents are surely waiting to happen.
Erica Lyons, Coromandel Town

Letters continued overleaf

Send letters to the *Coromandel Town Chronicle*, PO Box 148, Coromandel 3543 or email to corochronicle@gmail.com. Contributions should be kept short, and should not exceed 350 words. They must include name, address and telephone number. The editor reserves the right to reject letters or edit them for clarity and space.

Letters continued

Mystery of The Kaipawa

Dear Editor,

Someone amongst us may or may not be at this moment feeling guilty. By the time they have finished reading this short account they should be feeling very guilty.

The reason they should feel guilty is because they have deliberately driven to one of the most scenic outlooks in the town and blatantly dumped a load of household rubbish on the grass, right in front of the scenic outlook. What is worse they dumped it the day before we had 200 visitors running past this particular spot as they took part in the annual kauri run. What must they think of our town?

This story has all the hallmarks of an Agatha Christie "who done it". The culprit left various tell-tale signs at the scene of the crime and as we have pieced together the clues we have been able to get a sense of who the culprit might be.

- The crime occurred on either the night of Thursday 11 May or Friday 12 May.
- The culprit drove a small 4-wheel drive ute.
- The culprit is likely to be a male and is likely to have been alone.
- This was the first time that the culprit had driven this muddy gravel road and it was on a dark, windy and wet night. The last stretch of this road takes one from the top of the Kennedy Bay Road to the start of the Kaipawa Track. The last 200 meters before the track is the steepest road in the Peninsula. It is deeply rutted and quite dangerous. If it had been light, the driver would have seen two turn-around points before the steep section, jettisoned their rubbish at these points and turned around.
- You would like to think that if it was light that the person would not have dropped their rubbish in such a beautiful spot.
- The rubbish was in the back of the ute because a whole lot fell out onto the road as the driver negotiated the steep hill. They must have been packing it on the way back down.
- They were in a hurry to get home.
- They drink V energy drinks and Coke.
- There was evidence of fire damaged furniture.
- They like oysters.

Why would someone go to all that effort and risk to dump rubbish at a beauty spot 520m above sea level on the most treacherous of roads on the peninsula and then make no attempt to hide it? It would probably have cost \$2 to drop at the local dump. Perhaps the dump was closed when they got there and they didn't want to take the rubbish back home?

It is deeply disappointing that this kind of thing happens in our pristine environment. If the culprit is reading this, we hope you feel deeply ashamed of yourself.

From,

The Spirit of Coromandel Trust, Coromandel Town

Colville Harbour Care digs in this winter



COLVILLE HARBOUR CARE
Te Uaungarua ki te Kaitiaki

By Beth Pearsall, Colville Harbour Care coordinator

The Colville Social Service Collective (CSSC) has been awarded \$200,000 over three years from the Community Environment Fund towards a harbour care project to restore biodiversity and improve water quality in the Colville catchment. The project is being driven by Colville Harbour Care who want to empower our communities to be kaitiaki or guardians of this land and work together to make Colville Bay a healthy, living harbour now and into the future.

It has been a busy autumn so far with hiring staff, working bees, planting days, and the kickoff of our citizen science programme.

Last year volunteers gathered local native seed and raised them through the summer, ready to be planted this season. In early May we had twenty volunteers weed-whack kikuyu, blackberry, gorse and ivy and plant 750 of those native seedlings on the Colville foreshore. It was a great community effort and wonderful to see the trees out of their pots and in the ground. They are doing well.

We've also had Dr Mels Barton, coordinator Seaweek, and the national Marine Meters Squared (MM2) project, come and run an introduction to shellfish monitoring at Colville School. The children from Colville School will be out twice a year sampling our shellfish populations in the harbour and adding their data to the national MM2 database. The aim is that generations of children will be able to see and



Group of volunteers who did tree planting on the Colville foreshore

measure how the shellfish populations recover and repopulate as the riparian areas in the catchment are protected and planted, reducing sediment and nutrient loading in the harbour.

As many of you know there are a fair few pesky plants growing around the peninsula and we have them in Colville too. We will be having a weed busting working bee on the Colville foreshore in mid-July in preparation for our next planting day with the community and children from Colville School at the end of the month. Check our website www.colvilleharbourcare.org.nz or join us on Facebook to find out how and when you can get involved!

I am really proud to be working on this project and happy to be back in the beautiful northern Coromandel Peninsula. We will be adding another person to our team as a Pest Management Coordinator at the end of June. They will be taking care of our unique and globally significant shorebird population. We are also on the lookout for an experienced builder to help us plan and erect our new nursery.

If you're interested in our project or have any questions please contact me, Beth on (07) 866 6920 or by email on chccoordinator@colville.org.nz

**Coromandel
Liquor**

OPEN 7 DAYS TILL LATE

Beer • Wine • Spirits • RTD's

**GREAT
PRICES,
GREAT
SERVICE**



BUNDLE DEAL
**Captain Morgan Rum 1lt
& Coke 1.25lt \$39.99**

Special ends on 31/7/2017

112 Wharf Road, Coromandel Town
Ph 07 866 7024 Next to Coromandel Takeaways

**GOLD CARD
ACCEPTED**
- conditions apply

Hon Scott Simpson MP For Coromandel

Uncertain Times

Internationally we are living through a period of great uncertainty and random violence when too many lives are being taken by terrorists intent on inflicting pain and suffering on innocent people. Even our Aussie cousins aren't immune from this senseless violence, with recent events in Melbourne. While we can't be smug about our own relatively peaceful country, we are lucky to live in New Zealand.

Environmental funding for Colville Bay

As Associate Minister for the Environment and as local MP, it gave me very great pleasure and satisfaction to announce \$201,420 for the Colville Bay Harbour Care project.

It's a great example of how a small community group can contribute to bringing about positive change to their local environment. I am very pleased that this funding will allow locals to protect Colville Bay and the rivers, streams and wetlands that feed into the harbour.

The project's first priority is to establish baseline data to assess its progress by undertaking community education activities and engaging the community in programmes demonstrating best practice freshwater and coastal management.

I think it's particularly tremendous that this will include educating and actively involving children from Colville School and Colville Bay Preschool in collecting shellfish population data each year. The project will also develop a handbook which will contain a ton of useful information about weed control to residents and landowners, working bees and "swap-weeds-for-trees" events throughout the project.

One of the great outcomes will be that by the end of the three-year period, 5km of electric fencing will have been installed to prevent livestock entering the wetlands, rivers and streams that feed the Colville Bay Harbour and at least 20,000 native plants will be planted to revegetate newly fenced and public areas

Budget 2017 delivers to all New Zealanders

There was a favourable reaction to Steven Joyce's first budget, which is seen to be delivering for everyone.

At the heart of the budget is the Family Incomes package which will benefit 1.3 million Kiwi households. Superannuitants will also receive an increase of \$13.10 per week.

Careful economic management over the last few years means we have options other countries don't have because we have a growing economy, which includes more investment in public services, especially health and education.

The budget keeps New Zealand on track for sustained employment and strong economic growth. This is all great news for our region.

For more information from Parliament and around the electorate follow me on Twitter @scottsimpsonmp. Phone (07) 868 3529 email: mpcoromandel@parliament.govt.nz

Authorised by Scott Simpson, 614 Pollen St, Thames.



Mō tātou o Hauraki

Affordable medical & wellness
services for everyone in our community

Clinic Fees

GP	NURSE
Under 18s - FREE	Under 18s - FREE
18-65 years - \$17.50	18 + years - \$10.00
65 + years - \$10.00	

FREE

Under-25s sexual health checks

Bowel Cancer Awareness

Bowel, or colon, cancer is 75% curable if caught early enough. Some symptoms can be quite vague, but these are the *key signs* to look out for:

- Rectal bleeding
- A persistent change in bowel habits - going to toilet more often; diarrhoea or constipation
- Pain or lump in your tummy
- Unexplained weight loss and tiredness

*Don't leave it too late -
see your doctor NOW
if you have symptoms
of concern*

CLINIC OPEN:
Mon to Fri: 8.30am-5pm



225 Kapanga Road, Coromandel 3506
Ph (inc a/h): 07 866 8084
Email: coromandel@korowai.co.nz
www.korowai.co.nz

Hon Scott Simpson MP FOR COROMANDEL

www.scottsimpson.co.nz

Thames 07 868 3529
Kaiaua 09 232 2588
Katikati 07 549 4312

mpcoromandel@parliament.govt.nz

Funded by the Parliamentary Service
Authorised by Scott Simpson MP 614 Pollen Street Thames



Barry Brickell Performance Stage

By Pete Sephton, Project Coordinator

It is now eighteen months since the death of artist, engineer, and reluctant entrepreneur Barry Brickell. Over the space of fifty-five years Barry had a huge influence on the fabric of life in Coromandel, and while the railway is a testament to his achievements, there is no major tribute to Barry in the commercial area of our town. This is about to be addressed with a proposal to construct an open air performance stage in the grounds of Hauraki House. This initiative is a partnership between TCDC and The Driving Creek Railway Arts and Conservation Trust.

Well-known landscape artist and former potter John Madden has devised the original concept, which has a round stage six metres in diameter shaped as a cogged wheel. The floor of the stage will have five spokes to echo the mark that Barry used to stamp on his pottery, and around the outside of the platform we are hoping to mount some train wheels. Three stainless steel poles will be erected to support a removable sail cover. The stage will be powered so the perimeter can be lit, as well as providing power for the performers. From John Madden's original drawings a set of more detailed plans are being developed to present to the Community Board for approval. I am hoping to be able to have a concept plan in next month's Chronicle to give people a better idea of the planned development.

All directly interested parties in Coromandel have been consulted with widespread agreement that such a stage would be a worthwhile and fitting tribute to Barry. Site meetings have determined that the best position for the stage is on the grass at the back of the Hauraki House grounds; the corner by the scout den. The streamside banking provides natural seating and it is far enough back to not intrude on the grass playing area.

We anticipate that the stage will have diverse uses. It will be especially useful during events such as Illume, the Open Studios arts tour, and small festivals, as well as being used for dance performances, kapa haka, music, plays and market days. At other times it could be used for ceremonies such as weddings, and of course family picnics and BBQ's on summer afternoons and evenings. Barry, I'm sure, would have been pleased and amused to see people young and old performing on and enjoying a stage named in his honour.

Please feel free to call me if you want more information or would like to offer support. Ph 027 242 4090, email sephptonpete@gmail.com

Open Floor Dance Classes in Coromandel Town

By Lisa Corston and Jacqui Chan

We can often feel vulnerable and exposed when we step onto a dance floor for the first time.

17 years ago it was my (Lisa's) turn. People around me had been talking about how good it felt to be going to these dance classes up at Mana where people were encouraged to dance their own dance, no prescription moves, no way to get it wrong. I saw on their faces the residue of pleasure from enjoying a morning of dancing just for themselves. And so I finally gathered my courage together and stepped onto that dance floor, with all my shyness, my fear of being seen. I smile now at the memories of that first class when I glued myself to a spot in the room – as far from the teacher's table as possible – and somehow managed to enjoy a very close-in dance that was probably not very visible on the outside. There was something, though, that drew me back again and again through the following weeks and months. My shyness began to soften as I realised I was not being "watched", that everyone else was enjoying their own dance, that the teacher was aware of all of us without singling any of us out. These classes became a safe place, a haven which I treasured with growing zeal, where I could put aside my roles and responsibilities and for two hours, I could just be. Those first few tentative steps unfolded into a life-long practice of offering myself the enlivening gift of time just for me, to be just as I am.

On the Open Floor we honour the importance of creating a safe space for people to turn up and take time to simply be, just as they are. People gift themselves time to arrive home to their own bodies, and get an opportunity to discover their own unique way of moving and dancing. Any movement exercise offered up by the teacher is designed as a doorway inwards, each person's movement response will be different and just right.

And it just simply feels so good to dance! To feel the quickening of your pulse, enjoying the pleasure of being alive and waking up your body, such wonderful medicine for this wild ride of life.

Jacqui and I extend a warm and open invitation for you to come join us, just as you are. Warm your bones and get your circulation going on the Open Floor. Every body welcome

We teach fortnightly classes Thursdays at the Anglican Church Hall. We also have a series of classes at the beautiful Mana Retreat Centre over the winter. See times and dates below.

Thursdays 7*-8:30pm, Coromandel Anglican Church Hall. **13, 27 July; 10, 24 August; 7, 21 September.**

Tuesday mornings at Mana Retreat Centre 9.30*-11.30am, **8, 15, 22, 28 August; 5, 12, 19, 26 September.** (*Please arrive a few minutes early to settle in. Come up to 15 mins early to enjoy a longer warm-up.)

Entry: \$10. Special winter offer – Your first class is free in July.

Contacts: Jacqui 022 392 8588, Lisa 021 175 4741.

See www.wildbones.co.nz for more info

JAMES & TURNER 2014 LTD

FISHING • MARINE • TOOLS • CAMPING
PAINT • HARDWARE • GIFTWARE • GARDENING

**Exciting changes are happening
at James & Turner
– new carpet going down!
All stock is still available,
but may be temporarily shifted.**

Please ask for assistance in locating your items.
We apologise for the brief inconvenience.



GRANT WEBBER

jandt@vodafone.co.nz

Ph: 07 866 8805 Fax: 07 866 8969

PO Box 16, Coromandel 3543

131 Kapanga Rd Coromandel Town

Like us on Facebook - search "James & Turner"



COROMANDEL MARINE ENGINEERING & OUTBOARD SERVICE CENTRE

- All makes, model & inboards serviced.
- Full diagnostics for OPTIMAX, SUZUKI, JOHNSON, E-TEC, EVENRUDE & YAMAHA available.
- Retailers for Saltaway, outboard oils, Prolan products & marine spark plugs.



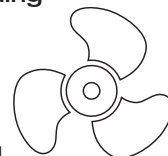
- Aluminium, stainless welding
& general engineering.

Telephone

Workshop/office:
07 866 8004

Grant: **028 2580 2351**

Jackson: **021 059 7542**



116, The 309 Road, Coromandel – 1km from the main road.

Museum News

By Raewyn McKinney

The 23rd AGM of the Coromandel School of Mines and Historical Society Inc was held on Sunday 11 June at the Elizabeth Park Village Hall. Unfortunately, we did not have a lot of members at the meeting, so we thank those who did come along, and thank Marie for the excellent cake she provided for our afternoon tea.

Our acting president, Frank, reported on the past year, which has been very successful. There were a few sad notes throughout the year – the resignation of Sue Wright, and the deaths of Ian Franklyn and Susan Hynes, who all served our committee well over the years. On a positive note, visitor numbers are up for this financial year, and we held an extremely successful Open Day back in February. Feedback from visitors to the museum has been very positive, as has support from the community. During this past year we have been fortunate to receive donations and grants from local organisations: Coromandel Town History Research Group, Coromandel Senior Settlement Trust, and Coromandel Patchwork and Quilting Group. The quilting ladies do an amazing service to the community every year, combining to make a quilt and raffling it to raise funds for a local organisation. We were thrilled they chose to support the museum this year, and the money has gone towards the preservation and upgrade of the photos in the museum.



Success Mine Display

The new committee for the 2017/2018 year is: President – Judy Bronlund, Vice President – Frank Mead, Secretary/Treasurer – Raewyn McKinney. Committee: Denise Campbell, Jennie James, Val Macdonald, Karen Marshall, David Phillip, Alison Rowe, Jim Sharp.

We thank all those serving on the committee and look forward to another busy year. Projects for the coming year include the painting of the museum; one room inside is to be painted during the winter, and when the weather improves the exterior of the original building and the jail house are due to be painted.

New displays are also planned, including our proposed marine and aquaculture display, and our funding officer, Denise, is preparing applications for funding while others are busy on design work. Work continues on the digital archives, and storage of photos, so it is a busy time for everyone.

The museum is closed for the winter, to allow work to proceed on some of these

activities. Painting the interior of the museum, for example, is not a small job as there are many exhibits to be relocated before work can begin. The museum will re-open at Labour Weekend.

Here is a news item from the “Thames Star” of 28 July 1898:

“Big Robbery At Coromandel.

From Royal Oak Battery.

£1000 Worth of Amalgam. 270lbs Picked Stone also Taken.

Coromandel, 28 July.

Quite a sensation has been caused here by a rumor that a big robbery of amalgam and picked stone has taken place from the Royal Oak G.M.Co.’s battery. There is every reason to believe that the robbery took place some time between Saturday night and Monday morning. It is stated that about £1000 worth of amalgam and 270 lbs of picked stone were taken, and that the back of the safe was cut clean out by the burglars. Detective McMahon is now on the Tokatea Hill making enquiries. I have visited the Coromandel office of the company today, but information (either confirmatory or in contradiction of the rumor) was refused.

Later. There is every reason to believe that the rumor re the Royal Oak amalgam and picked stone has every foundation in fact.

No further particulars are, however, yet obtainable.”

The museum is now closed for the winter. We will re-open at Labour Weekend

Eddy Windhager

The Coromandel Business Association (CBA) is saddened by the passing of Eddy Windhager. Eddy has been an integral part of the CBA for many years and members will miss his constructive contribution to the development of the local business community. Astute and intelligent, Eddy was an incredibly talented man with an amazing ability to turn his many dreams and ideas into reality. Eddy had a sharp wit, a keen sense of humour, a fun-loving nature and a love of life. Our thoughts are with Eddy’s family and his ever loving friend and wife Heather at this time.

Monday Walkers

By Irene Dunn

This past month we have done some interesting walks and we have been so lucky with the weather – we have done several beach walks and the one to Shakespeare Cliffs and Cooks Beach, with a surprise walk to a “no name” waterfall on private property, was awesome. Thanks to Wally for organising this. Sometimes you just don’t know what there is to see without local knowledge.

We walk every Monday – so tie up your shoelaces and join us.

Ring Irene on 021 157 8408 for more info on walks

**We now have a solicitor in
Coromandel town every Tuesday**



BRENDA FLAY, SOLICITOR: Travels to Coromandel on Tuesdays.

Please phone the Thames Office (868 8680) for appointments.

PARTNERS: Hayley Green and Brenda Flay

Thames Office: 611 Mackay Street, P.O. Box 31, Thames DX GA25514

Phone: 868 8680 **Fax:** 868 8718 **Email:** pjo@pjolaw.co.nz

Coromandel Office: Tiki House, Tiki Road

Our services:

**PLANNING:
PROPERTY:**

COMMERCIAL:

Asset protection, estate planning, family trusts and wills

Negotiation and advice on all matters related to the sale and purchase of land, buildings and rural property refinancing. Separations and relationship property

Company formation, sale and purchases of businesses, leases, dispute resolution, employment and related matters.

THAMES

WHITIANGA

COROMANDEL

/Richardsons

Real Estate Ltd MREINZ
Licensed REAA2008

Meet the team... Kim,
Robyn, Melissa & Laurie-Ann



New Listing



Nestled amidst a superb selection of native, specimen, fruit and citrus trees, this unique two-storey home features an abundance of character & charm. The expansive living spaces are designed to allow easy access to the wonderfully private decking, brick paved courtyard and the inviting plunge pool. Your family will love the generous sized kitchen/dining area, lounge, and separate TV/music room with fireplace. The upstairs master bedroom is accompanied by an office/lounge area and en-suite. There are two further bedrooms, a guest bathroom and internal access to the large single garage/workshop. This well-established 1,629m² property offers a very tranquil setting and is within a relatively short walk of the township. May suit a boutique style Bed & Breakfast business or you may just wish to keep it all for yourself! **\$497,000**

Sensational Section Selection



- * Waterfront on Wyuna Bay Road
- * 2 x adjacent sections (1,978m²)
- * Panoramic harbour/range views
- * Great design options. \$556,000



- * It's ready for your new home!
- * Sunny section near town
- * 666m² with an elevated setting
- * Covenants apply. \$216,000



- * The last section within Stage 2 of the Greenhills subdivision
- * 761m² of near flat contour
- * Easy walk into town. \$185,000

/Richardsons

Real Estate Ltd MREINZ
Licensed REAA2008

Proudly making real estate
a reality for Clients and
Customers for over 57 years

www.richardsons.co.nz

151 Kapanga Road, Coromandel

Ph: 07 866 8900 - Fax: 07 866 8513

Kim 021 533174, Robyn 021 448975

Melissa 027 2498287, Laurie-Ann 027 9276368



An enchanting & beautifully restored Circa 1872 Villa featuring verandahs on 3 sides and set amid park-like 1,073m² grounds. The home is rich in character and charm (fret-work, sash windows, high stud kauri ceilings, kauri floors & doors) and is complemented with the best of modern living. The stylish kitchen boasts a magnificent Gourmet wood-burning cooker which heats multiple radiators throughout. Separate lounge, open-plan kitchen/dining, 3 double bedrooms, 2 bathrooms, laundry, office and, 4th brm in the attic. Paved courtyard, large garage /workshop, vege gardens/fruit trees. **\$695,000** (Adjacent section also available)

Set in a small enclave of homes approximately 5 minutes' drive north of picturesque Coromandel Township, the immaculately presented 809m² property is brilliantly suited for either permanent or holiday living. The home offers an abundance of space for visitors as it features 2 lounges, near new kitchen, 4 bedrooms, office, 2 bathrooms and fantastic covered decking. The beautifully landscaped gardens are complemented by an adjacent stream boundary, single garage and storage shed, and the children only have to walk about 130m to enjoy hours of fun on the beach. **\$579,000**

KEEN TO SELL?

SOLD

WOULD YOU LIKE TO ADD YOUR PROPERTY TO THE LIST?

SOLD

Our office SALES: January 2016 – June 2017

570 Wyuna Bay Road, 1560 Rings Road, 976 Tuataewa Road (Little Bay), 540 Edward Street, 2865 Long Bay Road, 80 Mannion Road, 2454B Colville Road, 950 Rings Road, 75 Huihana Lane, 996 SH25 Manaia, 25C Frederick Street, 790 Wharf Road, 326 Tiki Road, 324 Tiki Road, 2 Mahakirau Road, 1150 Hauraki Road, 90 Lillis Lane, 2125 Wyuna Bay Road, 65 Watt Street, 40 Victoria Street, 970 Rings Road, 1747 Colville Road, 35 Mary-Ellen Place, 45 Kauri Grove, 170 Golden Shore Place, 23 Victoria Street, 21 Victoria Street, 570 Wyuna Bay Road, 94 Kowhai Drive, 78 Golden Shore Place, 80 Golden Shore Place, 19 Victoria Street, 537B Tuataewa Road, Site 6/1076 Colville Road, 11 Mahakirau Road, 122 Tiki/Quarry Road, 11 Waihirere Drive, 30 Driving Creek Road, 865 Rings Road, 185 Albert Street, 24 Mary-Ellen Place, 175 Albert Street, 44 Victoria Street, 275 Colville Road, 2628C Rings Road, 280 Buffalo Road, 30 Victoria Street, 2490 Wyuna Bay Road, 1276 (Lot 1) Port Charles Road, 120 Woods Road South, 370 Tiki Road, 1170 Hauraki Road, 116 Waihirere Drive, 118 Golden Shore Place, 93 Golden Shore Place, 27 Golden Shore Place, 35 Woodroffe Road, 622 Wyuna Bay Road, 240 Wyuna Bay Road, 136 Golden Shore Place, 78 Golden Shore Place, 73 Harbour View Road, 473E Tuataewa Road, 30 Albert Street, 41 Greenhills Drive, 56 Kowhai Drive, 359 Hauraki Road, 40 Golden Shore Place, 96 Whangapoua Road, 170 Golden Shore Place, 167 Golden Shore Place, 152 Golden Shore Place, 118 Golden Shore Place, 93 Golden Shore Place, 5 Victoria Street, 40 Bellville Drive, 580 Edward Street, 35 Greenhills Drive, 92 Golden Shore Place, 1002 Wyuna Bay Road, 72 Golden Shore Place, 111 Golden Shore Place, 285 Preeces Point Road, 64 Golden Shore Place, 1628 Rings Road, 275 Wyuna Bay Road, 1190 Tiki Road, 4 Allman Drive, 147 Golden Shore Place, 5 Allman Drive, 1595 Wyuna Bay Road, 1900 Wyuna Bay Road, 38 Kowhai Drive, 2886 Long Bay Road, Site 9 1091 Colville Road, Site 31 1091 Colville Road, 16 Koromiko Drive, 2888 Long Bay Road, 105 Huihana Lane, 1653 Port Charles Road, 655 Tiki Road, 405 Te Kouma Road, 150 Lillis Lane, 48 Puriri Road, 46 Puriri Road, 84 Woods Road South, 971 Tuataewa Road, 690 Wyuna Bay Road, 50 Harbour View Road, 71 Golden Shore Place, 112 Te Tiki Street, 871C Tiki/Quarry Road, 65 Harriet Kings Road, 70 Mary-Ellen Place, 10 Whangapoua Road, 8 Courthouse Lane, 319 Hauraki Road, 3 Victoria Street, 28 Colville Road, 105 Lillis Lane, 1569 Rings Road, 98 Whangapoua Road, 20 Kowhai Drive, 220 Pagitt Street, 2650 Wyuna Bay Road, 85 Harbour View Road, 90 Glenfern Drive, 1190 Hauraki Road, 1290 Wyuna Bay Road, 75 Kauri Grove, 165 Mannion Road, 479 Albert Street, 500 Tuataewa Road, Site 43 1091 Colville Road, 135 Lillis Lane, 2612 Rings Road, 16 Puriri Place, Site 45 1091 Colville Road, 1601 Rings Road, 55 Mary-Ellen Place, 2751 Long Bay Road, 1940 Wyuna Bay Road, 15 Allman Drive, 13 Allman Drive, 505 Tiki Road, 20 Kauri Grove, 1409 Rings Road.

What is your property worth? Ask us for a confidential market appraisal

Ann's Good News, Naturally

By Ann-Kerr Bell

**The Microbiome and Your Optimum Wellness**

It is reassuring to know that the natural commonsense approach I have been applying in my practise for 20 years, in the field of natural medicine, is again scientifically validated.

At the International Congress on Natural Medicine in Australia last month, it was demonstrated that there is more accumulating evidence that a disturbed microbiome is linked to not only gut disorders but also systemic and distal diseases, highlighting that gut microbiome interacts throughout the body with metabolism, immunity and neural function.

Scientific interest and research in the microbiome (microbes and their genes, or bacteria), is one of the most rapidly growing areas of health science today.

Topics covered were: The crucial link of the microbiome to leaky gut, linked to autoimmunity, reproductive health, including pregnancy and childbirth, overuse of antibiotics and other drugs, obesity, cardio-metabolic health, neurological health, food allergies, small intestinal fungal overgrowth, faecal transplants and successful treatment of ulcerative colitis, obesity controlling human bacteria, reproductive health, and much more. Also covered was the issue of leaky homes, mould toxins, and their inflammatory effects causing a wide range of illnesses including Chronic Inflammatory Response Syndrome (CIRS).

What I can continue to help you with

- Gut complaints – Bloating, constipation, ulcers, Irritable Bowel Syndrome (IBS), Irritable Bowel Disease (IBD), diverticulitis, Gastroesophageal Reflux Disorder (GERD), how to resolve your common gut complaints through the support and function of the relationship with the human gut microbiome.
- All other health issues – Skin, urogenital tract, brain, cardiovascular disease, diabetes, autoimmune disease, Chronic Inflammatory Response Syndrome (CIRS). The gut microbiome has a powerful impact on body systems beyond the gut.
- Pre- and probiotics (that work) – Know about the mechanisms of action of probiotics and the surprising ways they cultivate and promote restoration for your healthy gut microbiome. Pre- and probiotics do change how the microbes in the gut function and their metabolites are produced, to get the best effects.
- Integrative medicine – I put science into practice by recognising the impact of diet, lifestyle, medications, stress and poor digestive function on microbiome composition and function, so I may support you with a practical approach to manage your microbial environment for symptom free, sustained optimum wellness. Herbal medicine is powerfully medicinal and safe. Minerals, vitamins, amino acids, essential fatty acids, etc, in capsule, tablet or powder form, are also medicinal and necessary to pull you out of that disease rut you may find yourself in.

But remember, whole, fresh food is your core, consistent medicine.

Feed your microbiome well and they will reward you accordingly.

More Good News for Winter

Cough, postnasal drip, sinus: After years of seasonal respiratory issues, this 63-year-old lady has no more cough. She loves my herbal cough tonic, and has all of her family taking it because it works!

Immune strength: Keep your family virus-free through the winter with my "Boost for Winter" recipes and my "Family Immune Boost Tonic".

Contact 021 046 1647

Combined Clubs Of Coromandel THE CLUB

Coromandel Bowling Club

By Linda Wright

Our club held a dinner and were very honoured to have NZ Bowls President Mike Spring and ODC Steve Beel, T.V. President Graeme Goss, Mercury Bay President Don Bates and Thames Coast President Murray Galloway and all of their partners attend.

After welcoming our guests, Linda gave the floor to Mike for the predinner speech. He outlined our club's bowling activities and how Coromandel Bowling Club has been awarded, for the second time, the "Gold Award" from NZ Bowls.

Mike then presented club president Linda with the award, which she accepted on behalf of The Club. It was a very proud moment, with lots of people to thank. We have many passionate members which have given time and inspired changes in the club and community, especially with the amalgamation with the RSA, so a very big thank you to all of our members.

We then enjoyed our dinner and a good social time was had with our guests.

The Thames Valley Women's closing day was held last month in Te Aroha and our Coromandel team were 2nd. They were Sue, Irene, Linda and Vi. Well done team.

The Thames Valley Men's closing day was held in Thames and two teams competed in not such good weather conditions, as the women had the week before.

Our greens are in the middle of renovations so are still closed. Good to see that members are traveling to play on the artificial greens in the neighbouring clubs.

So don't forget our Wednesday night quiz and film night; doors open at 6pm and start at 7pm.

Contact Linda Wright [07] 866 8440 or 027 651 3477,

RSA news

By Pat Williams

Goodness me, into the sixth month already; halfway to Christmas! Our Saturday Club Night continues to be well attended in spite of it being winter. Breed 'em tough in Coromandel Town. Stoney, our president, has not been very well since returning from his Big OE (South Island). Wonder why? Too much smoked salmon maybe.

Any Returned Servicemen out there, whether a member of the RSA or not, remember you are entitled to financial assistance for hospital travel or other monetary problems you may encounter. Please contact The Club if you need us.

Just looking thru the Chronicle of June 2015. On the front cover our fine new 4 Square ready for opening and then pictures of four or five empty shops. Doom and gloom. Nearly all pictured are up and running, hopefully thriving. Swings and roundabouts as they say. Till next month.

Keep warm and stay safe.



NZ Bowls President Mike Spring presenting "The Gold Award" to Coromandel President Linda Wright

Natural Medical Centre

The natural alternative for all your health requirements

At Tiki House,
Coromandel.

For appointments,
phone or text: 021 046 1647
or email: annk-b@ps.gen.nz
www.naturalmedicalcentre.co.nz

Ann Kerr-Bell

B.Hlth.Sc. (Comp.Med.)
Adv.Dip.Naturopathy
Adv.Dip.Med.Herb. MNZAMH
Naturopath
Medical Herbalist
Nutritionist
Massage Therapist

**COROMANDEL
FISH & DIVE**

Des & Gail London

95 Kapanga Road
Coromandel

Ph: (07) 866 8797

Email: des-gail@xtra.co.nz



Rods Reels • Bait & Tackle • Dive Gear • Fills & Tests

Our Coromandel

News from Thames-Coromandel District Council



JULY, 2017

Coromandel Harbour project updated

Here's where we're at with some of the pieces of work around Coromandel Harbour.

Jack's Point/Furey's Creek

The feasibility of an upgrade to Jack's Point boat ramp is still under consideration. Last summer we monitored the ramp usage and found, on average, only 5 boats used the ramp each day, which is not high usage compared to other ramps on the Coromandel. After completing a double dredging last June/July the ramp has silted up again and is really only usable an hour either side of high tide, which we are alerting the public to. Meanwhile a proposed ramp upgrade is still under consideration as part of our Long-Term 2018-2028 planning process.

Park and Ride Facility – Hannaford's Wharf

The resource consent application by the Mussel Kitchen for a Park and Ride facility for Hannaford's Wharf is approved and we're working to help facilitate this development, in order to improve the traffic and parking congestion.

Coromandel Harbour Marine and Harbour Strategy

The Expression of Interest (EOI) for potential partners closed late 2016. We are short-listing

the 12 proposals and following up with all the applicants.

Marine and Harbour Strategy

This is currently under development and will set out a long-term plan for the boat ramps, wharves and jetties on the west coast. The strategy is helping to inform our Annual Plan for 2017-18 and Long-Term Plan (2018-2028), specifically in relation to our marine and harbour assets and facilities. This strategy will be further informed by the outcomes of the EOI process once known.

Sugarloaf Wharf (Te Kouma) Expansion

Regular monthly meetings continue with the Coromandel Marine Farmers Association (CoroMFA) to discuss their consenting requirements and progress regarding the proposed development of a piled wharf at the Sugarloaf Wharf (Te Kouma). This project continues to be driven by the (CoroMFA) with our Council acting in a facilitation role where appropriate. In the meantime, CoroMFA has been working with their members and have updated their code of conduct to improve operational health and safety procedures on-site.

Future demand for Coromandel Harbour boat ramps and wharves

We're working to improve the district-wide demand management for boat ramps with the aim of spreading the recreational fishing load across the Coromandel to help alleviate pressure on our most busy facilities during peak times. We've visited a number of existing boat ramps between Thames to just north of Coromandel with the Regional Council and a coastal scientist to see what enhancements we can make. We've also been looking for any potential sites for a new boat ramp, so this work will continue over the coming months. We're keen to hear from anyone who may have ideas for a potential boat new ramp site on the west coast between Thames and Coromandel. Key criteria for any new ramp will be around parking capacity and ease of implementation.

www.tcdc.govt.nz/coroharbourproject

Finalist – Local Government NZ Excellence Awards



We're really proud to say *Our Coromandel Summer Magazine* has been named a finalist for a Local Government NZ Excellence Awards, in the community engagement category.

Now in their fourth year, the Awards recognise and celebrate the key leadership role that local government plays in communities around the country.

We've produced the magazine for four years now and a fifth issue is now in production, due out in October.

It targets the nearly 60 percent of our ratepayers whose permanent residence is outside the district, after customer surveys and anecdotal reports indicated inserts included with rates bills were often discarded without being read.

The magazine provides information not only about activities in the Coromandel but also Council news, articles about elected members and staff, and updates on Council projects and public consultations.

It is designed to encourage ratepayers with permanent homes outside the area to visit the Coromandel more often and stay longer.

Judges praised the use of a print magazine as a way of keeping in touch with the district's many non-resident ratepayers.

If you are organising an event in the Coromandel from Nov 2017 to Oct 2018, we can put it in the events section of the next magazine. Send an email to kirstin.richmond@tcdc.govt.nz before 1 August 2017.

www.tcdc.govt.nz/summertimes



Coromandel
-Colville
Community Board
UPDATE

Coro Sportsville – Resurfacing of the existing courts was completed in June.

Commercial concessions – For businesses to operate on our parks and reserves for 2017-18 have been granted. There were no applications from Coromandel-Colville. You can view the successful applicants www.tcdc.govt.nz/commercialconcessions and if you are still interested talk to our team in the Coromandel office.

Creative Communities Scheme – Successful applicants from Coromandel-Colville can be viewed at www.tcdc.govt.nz/ccs



Get our free eNewsletters!
www.tcdc.govt.nz/subscribe



www.facebook.com/ThamesCoromandelDistrictCouncil

www.coromandel.govt.nz

customer.services@tcdc.govt.nz
Private Bag, 515 Mackay St, Thames
Phone: 07 868 0200



Coromandel Independent Living Trust

A Shared Community Hub

A new community centre for Coromandel township is now a real possibility. The Department of Internal Affairs has indicated that they can help local groups interested in establishing such a facility.

CILT has an excellent reputation for capital developments in Coromandel Town (eg, the Samuel James Reserve building which houses the Coromandel Town Information Centre, the pensioner flats in Kapanga Road, and the new Community Re-Use Centre in Hauraki Road – The Goldmine) and we are keen to find other partners who may be interested in collaborating with us on this project.

With the remoteness of the upper Coromandel from service centres such as Thames, it is important that our community establishes a new venue where we can provide shared services for our residents and at the same time reduce costs for community groups. We're excited about this opportunity and encourage any other groups who are keen to explore this initiative to contact us at Tiki House to register their interest. The earlier other organisations get involved in

this process, the more tailored the venue design can be for those interested parties.

Please contact Joanne Scott on (07) 866 8358 for more information.

Resource Centre Front Desk

Anna Galvin is the newly appointed Resource Centre Coordinator. However, you won't see her at the front desk very often as she mainly works behind the scenes in the finance office. On Mondays and Tuesdays Rochelle Still is on the desk, Abby Morgan on Wednesdays and Kaye Anderson most Thursdays and some Mondays.

Volunteers: paying it forward and sideways

Volunteers by default are a nice bunch. These are people who care and act for others or for a cause without any pecuniary gain, using their time and skills to make the world a kinder, better place.

"Nice bunch" applies to the CILT volunteers and Chris Ogilvie is one of them.

Chris is full of ideas and one of his bright schemes was to get Benjamin, the Goldmine's operator, more mobile. Benjamin has a bike but riding it wasn't so easy, so Chris took part of a child's bike and constructed a side-car frame that affixes to Benjamin's bike. Brilliant! Chris

saw a need, found a solution and did something about it. Benjamin is pleased to be much more mobile. So when you see Benjamin cycling to The Goldmine, the story behind it is: volunteers are a nice bunch and good to be around.

And paying it forward or sideways? After the project was finished, Neville Cameron took Chris for a flight on a winter day when the sun actually did shine.

Work Co-op

Wonderful tutor Jo McNeil has not been too well. Jean visited her in Waikato Hospital and the CILT team wish her a speedy recovery; hoping to see her back at the Work Co-op soon. As usual the Work Co-op are out and about busy helping and supporting people around town.

Fabulous mosaics on Facebook

Artists In The Making (ATM) in Whitianga continues to produce a stream of fabulous mosaic artworks under the guidance of John Hawken, who has taken over since ATM founder Anne Bowden retired after fifteen years of leading and growing the

group.

They now have their own Facebook page: facebook.com/ATM.CILT.org.nz which showcases their work – make sure you check it out!

Shortly the group will be offering selected works for sale. These pieces will be well priced, so grab a bargain before they all disappear.

Notices

The final IRD visit for this year is on **Thursday 13 July**. If you wish to make an appointment, phone the Resource Centre on (07) 866 8358.

Poetry SPOT

Music

By Beryl van Donk

I can hear music in the ripples
of a stream. I can hear music
as I sit and gently dream.

I can weave songs when I see
flowers bloom, and the music
never ceases when the fragrance
when the fragrance fills my room.

I can hear music when I see your face.
When your arms were round me
the music filled our space.

I can hear music when I see a
baby smile. Life's music's never
ending, it is with us all the while.

MASSAGE THERAPY COROMANDEL



- ★ Deep Tissue Remedial Bodywork
- ★ Relaxation / Swedish massage
- ★ Lymphatic Drainage
- ★ Hot Stones Massage

Lynley Ogilvie, RMT.

Call for an appointment: (07) 8668684 or 021 866868

SeniorNet Coromandel

By Loes Beaver



SeniorNet was initially set up for computer assistance for 50+ with set lessons but today we all have our own computers, laptops, Ipads and smartphones, so things are changing. We can assist with setting up programs, such as email, photos, and even how to deal with scammers. It is really nice to see new people coming along to our tuition days. Perhaps there are some parents who would like to know more about computing – we could help there. We work on principle one-on-one, but it is great how much more you can learn by just listening to other people's queries and questions.

We meet every Tuesday at 2.15pm in the Area School Music Room. We appreciate the assistance from the school and staff.

Contact Loes (07) 866 8053 for any further information

Coromandel's Premium Accommodation & Management providers..

Luxury Apartments
Holiday Managements
Long Term Rentals
Linen
Cleaning



WANTED - Professional Cleaners - Apply Now!

Luxury Apartments
Holiday Managements
Long Term Rentals
Linen
Cleaning

Diane Arundel Property Manager

265 Kapanga Rd, Coromandel

07 8668803

0274 361729

office@accommodationcoromandel.co.nz

100% Coro Ltd MREINZ

Heart Beat – St John Ambulance Coromandel/Colville

By Julie Morris, Station Manager, Coromandel



Winter is time for sports – rugby, soccer, netball, hockey and whatever you may enjoy!

As a lot involve “contact” everyone needs to be aware of concussion – a mild form of brain injury caused by a blow or jolt to the head. People can get concussion without having been “knocked out”. Scans and x-rays are not helpful because they do not diagnose concussion.

Concussion is important. It can cause significant problems and can be made much worse if another concussion occurs before the brain has healed.

Symptoms of concussion

The symptoms vary from person to person. They are not always present directly after injury and some people develop them several days later. Common symptoms include:

- headache
- nausea and/or vomiting
- feeling “hazy, groggy or foggy”
- difficulty concentrating, remembering things, balance and/or “not right, down, tired”.

The symptoms of concussion usually last 2-10 days. Occasionally they may last longer and if this is the case, you should see a doctor, preferably your own GP.

What the person with concussion should do

- Do not play sport or take part in activity that is either strenuous or risks another concussion for at least three weeks, unless a doctor advises otherwise.
- See a doctor (preferably your own GP) for a review within one week.
- Rest – Symptoms will be relieved by rest, especially when you feel tired.

- Do not drink alcohol or take illegal drugs for at least 48 hours following the injury.
- Do not drive a vehicle or operate machinery for at least 48 hours following injury.
- Take medicines (such as paracetamol or ibuprofen) regularly for headache, following the instructions on the packet.

What family and friends should do

It is important to take concussion seriously and to understand that concussion may affect some people very badly.

An adult should stay with the concussed person for at least 24 hours after injury and wake them briefly every two hours. This is because the brain injury may get worse and the person may need to go to hospital. Watch for the warning signs (below).

Warning signs of a severe brain injury and when to call an ambulance

Sometimes concussion can lead to a severe brain injury. If this is the case it will usually be noticeable within 24 hours.

Watch for the following warning signs. Dial 111 and ask for an ambulance if they develop any of the following:

- Are drowsy and difficult to wake up
- Are very confused
- Have a headache that gets much worse
- Vomit more than twice
- Have a seizure (or fit)
- Develop a weak arm or leg
- Become very unsteady on standing
- Have difficulty speaking.

If you have additional questions

Call Healthline on 0800 611 116. A registered nurse will talk to you and answer your questions.

Staff Profile – Sandra Delany Why did you join St John Ambulance service?

I joined St John initially to become part of the community. I had recently moved to Coromandel from Auckland.

How long have you been a member of St. John?

I have been part of St John for one year now and have obtained my First Responder qualification.

What do you enjoy most about being an ambulance officer?

I enjoy meeting people in the community and it is very satisfying to help them when they are in need of our service. Being a member of a great team is an important part of it. I enjoy the company and camaraderie at the station.

Would you recommend joining St John to others, and why?

I would encourage others to join St John. It is a rewarding and fun environment to be in. Never in my wildest dreams did I imagine I could do this, now look at me! Come and talk to us on how YOU can join the team.

Stay safe, keep well.



You too can be part of Coromandel / Colville Team: For more enquiries call the station and talk to the duty officer or leave a message (07) 866 8279 to find out more.

Coromandel Family Health Centre

Happy Winter Coromandel!

Bryan and Sandy are away and will be back in August. We have a locum, Dr Fiona Morris, filling in.

Unfortunately, we will not have our x-ray service available while Bryan is away.

We have flu vaccines available.

#wintervibes



Interested in having a COLOUR advert?

Got photos you want to show to their best potential that look uninteresting in greyscale?

WANT TO STAND OUT FROM THE CROWD?

Limited pages are now available in colour on a first come first served basis.

Currently doing inside front cover, inside back cover and outside back cover, plus some inside pages if there is the demand.

If you are interested look at the ad rates and sizes on the Chronicle website
www.coromandeltownchronicle.co.nz/html/ads.html
 and then email Debbie at corochronicle@gmail.com
 to book your space or for more information.

SALES - SERVICE - REPAIRS OF SMALL ENGINE EQUIPMENT • ROTARY HOES

CHAINSaws • WEEDERS • HEDGE TRIMMERS • WATER PUMPS • GENERATORS • AUX OUTBOARDS • MINI BIKES

Shane
021 0238 0347

Paddy
021 662 920



TRADE CERTIFIED

SALES – SERVICE – REPAIR OF SMALL ENGINE EQUIPMENT

FREE PICK UP AND DELIVERY TO COROMANDEL TOWN

165 Wharf Road Coromandel Town
 SERVICING COROMANDEL PENINSULA

• MOWERS • CHAIN SHARPENS / CHAIN SUPPLY • NGK PLUGS • BLOWER VACS

• KNIFE AND SCISSOR SHARPENING • LOG SPLITTERS • RIDE ON MOWERS • CONCRETE CUTTERS • WATER BLASTERS

Coromandel Lions

By Lion Lyn

100 Years

"You can't get very far until you start doing something for somebody else," was the personal motto of Melvin Jones; the public spirited founder of the International Association of Lions Clubs. The first meeting was held on 7 June, in Chicago USA 1917. The first convention was held in Dallas, Texas 8-10 October 1917, and Lions sprang into action. A constitution and bylaws were adopted, colours agreed on and the Objects and Code of Ethics were drafted. Melvin continued as acting secretary. The organisation became international in 1920.

The first club formed in New Zealand in March 1955. By late 1973 membership had reached one million across the world. Under Melvin Jones's dynamic leadership, Lions clubs earned the prestige necessary to attract civic-minded members. He was also recognised as a leader by those outside the association. One of his greatest honours was in 1945 when he represented Lions Clubs International as a consultant in San Francisco, at the organisation of the United Nations. Melvin Jones died in 1961, aged 82, after leading the organisation for 44 years. Currently, we are the world's largest service organisation with more than 1.4 million members in 210 countries and geographical areas. Also to this day we still have a seat on the United Nations – the only service club to have the honour!

What have Lions achieved in 100 years? Lions have saved the sight of 30 million people, taught life skills to 13 million youth in 85 countries, improved health with measles vaccinations for more than 200 million children, gave disaster relief to 5 million people annually including our own country, and millions of small projects in each club's area. "Where there's a need, there's a Lion." We are local, we are global, and we are proud to help where we are needed. We enjoy good friendships, support and giving back! Do you want to join us? Give us a call or visit www.lionsclubs.org.nz.

Club stuff

I mentioned that I would find out why our Lions year starts and ends in June or July. I hope the above history lesson has cleared that up! Why does Coro Club have change of officers in July? Because we have to be different! I was asked this morning, why were we named Lions? I will leave that for next month – I might know by then! Cheers for now.

Contacts are pres Jean 021 208 7576 sec David (07) 866 7104 firewood (07) 866 7722

**Daffodil Day 2017**

By Marie Mead and Robyn Dudson.

25 August is date of this year's annual Daffodil Day Appeal so please keep this date in mind and be sure to call at our stalls on the day.

As in past years, we have been donated a painting to raffle as one of our main fundraisers. After many more years than she can remember, Ann McNair has decided to step aside and let another artist donate us a painting. I would like to thank Ann for all the years she has supported the Cancer Society in this way. No doubt many of you folk will have one of Ann's paintings in your homes. This year we are very fortunate to have Annette Bishop offer us one of her beautiful pastel works of art to raffle, for which we are very grateful. Annette has been a member of the Coromandel community for many years and is a very active member of the Coromandel Pastel Artists. She is also an extremely strong supporter of the Cancer Society, having lost both a husband and a father to cancer, so her gift of a painting to raffle is very significant.

Our raffle will be on sale at the Coromandel Bizzare, with tickets being \$2 each or 3 for \$5 and will be drawn on Daffodil Day. So folks please put a ring around **25 August** and hope to see you then.

Coromandel Community Garden

By Tai Fair

The garden welcomes volunteers, but the day for coming along has changed. If you want to participate please turn up on Wednesday afternoon. Tai will usually be there from 2pm, so if you are interested call in and chat about how you can be part of the garden project. Sometimes there is a mission to collect seaweed and manure, as was the case recently. The resulting large compost heap will be ready for spring planting. Mulch, which has been added to the compost, has also been used on the paths. A blackboard is planned so that experienced volunteers can see what tasks need doing and get on with the job.

Current crops are going well with leafy green vegetables and golden beetroot being harvested for food parcels and volunteers. Spring onions, kale and silverbeet are prolific now, and bok choy and green and red mizuna have been going strong for a while. Leeks are halfway to ready, celery is looking good and broad beans are already one foot high.

Partly thanks to the weather, everything is growing really well, including recently planted radishes, swedes, turnips, cabbages and broccoli. If space permits a few more fruit trees will go in soon.

If you don't know the garden, it is worth checking it out, at the end of the road by Hauraki House, behind the colourful gate painted by local artist Tony Calsifari. Happy gardening to all.

PENINSULA ELECTRICAL SERVICES LTD

Commercial & Domestic Electrical Contractors

**RAVINDER & SUE RAJ**

Registered Electrical Inspector

1750 S/H 25

Coromandel

P.O. Box 109

Coromandel

Telephone (07) 866 8166

Fax (07) 866 8162

Mobile (0274) 738 734

Free Phone: 0800 4 Electrical (0800 435 328)

E-mail: ravinder@e3.net.nz**Pepper Tree**
RESTAURANT & BAR**Pepper Tree Winter Festival 2017**

8th July

12th August

9th September

*Bring your winter boots out for a dance!***LIVE BAND • FIRE PIT
BBQ • BAR SPECIALS**

Gold Coin Entry

Donations to St John Coromandel Town



Regional Day

Coromandel Embroiderers Guild

By Diann Cade

This is retreat month for the Guild, when our members choose to have a couple of nights away together and sit and stitch for two days – no cooking, housekeeping or whatever those other things are that you do when you are home. This may sound a little reckless but it is great for the soul!

We recently hosted Regional Day for the Northern North Island Region of Embroiderers Guilds. Over 100 embroiderers gathered at the Coromandel Citizens' Hall to meet new and old friends and participate in a day of stitching. It was planned to embroider 130 blocks that will be stitched into 26 quilts for the Cosy Kiwi Kids programme. This was positively received and stitching occupied some of us even through lunch time.

However it was not only stitching and talking, as there were stalls to buy from and great morning and afternoon teas to partake in. It was another way to share a day and similar interests with others.

We welcome new members. For further information about the Coromandel Embroiderers Guild and related activities contact Jill Wilson (07) 866 7484

Coromandel Town Information Centre

By Sandra Wilson, Manager



As I sit and write this month's article it is a stunner of a day, not a cloud in the sky and it is officially winter. Must admit it is a little cooler in the mornings and evenings.

Whether they are looking to hike through our beautiful walks or come in from the cold and to sit by the fire, there is something for everyone when they visit our fair town.

Where's the best coffee, the best fish 'n chips, best restaurant for dinner? Where can we buy postcards, magnets, sleeping bags? Some of our most frequently asked questions/enquiries are (in no particular order): What can we do here? Are there any walks around here? Is Cathedral Cove here? Are the roads ok? Have you a town map? Are there fishing charters here? Where is the train? Can I book the bus here? Is the ferry a car ferry? Where can I get free Wifi?

Having just visited north of Coromandel as far as Port Charles last week I am reminded that we are so lucky to live in a place that has some of the most beautiful scenery in the world.

Also, if you are heading up that way check out the Kiwi Listening Post and also the Kiwi sculpture; after all it is real kiwi country.

You can book: InterCity, 360 Ferry, BlueBridge Cook Strait Ferry, Hobbiton. We have passport forms, Chronicles, Hauraki Herald and copies of the Informer available here as well.

Keep warm.



Get your business noticed by:

- over 31,000 visitors each year
- over 3,300 website visitors a month
- over 450 people who follow our Facebook page
- over 400 people on our newsletter list

Advertising spaces are filling up quickly at the Coromandel Town Information Centre (CTIC).

The CTIC is not just for tourism businesses. The Information Centre frequently gets asked about "the best" tradespeople, retailers, and professional service providers as well.



Membership of the Coromandel Business Association (CBA) gives all businesses:

- a free listing in the soon to be released business directory;
- the opportunity to promote through a larger advertisement; and
- a free promotional post on Facebook

Membership also gives you a strong voice on regional and district wide initiatives that have an impact on businesses. Only \$105 plus GST.

Don't own a business but want to know what is happening in the business community?

Then join up as a "Friend of the CBA" to receive regular emails about the Coromandel Business Association's work. Only \$35 incl GST.

All advertising and membership money is invested into initiatives designed to support the local economy and grow local employment opportunities.

Want to know more?

Contact Sandra at the Coromandel Town Information Centre. 85 Kapanga Road.
Ph 866 8598. coroinfo@extra.co.nz

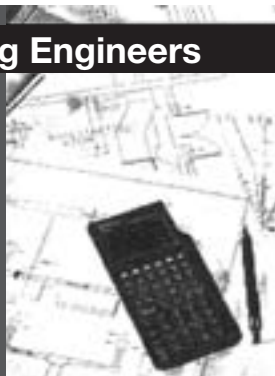
Llandem Consulting Engineers

Derek Stewart
C.P.Eng MIPENZ

- Structural
- Civil
- Geotechnical

Ph/Fax: (07) 866 6704
Cell: 027 442 4234

7c Torehina Hts, Waitete Bay



Creative Dance Class

By Tina Hoffman

We have about 30 happy kids signed up for the next few weeks for the creative dance class at Coromandel Area School Hall and we have lots of fun together exploring the world of movement, expression, rhythm and dance. We have girls and boys aged 5-12 years and a team of 3-5 assisting parents and grandparents. We appreciate and encourage spontaneous help from any parent or other grownups who like to move, clap and laugh with us through a 45 min lesson.

The fee is \$2 per child and lesson and there is no special uniform needed.

Parents are very much encouraged to motivate their child/children. Be curious – don't miss out on an opportunity that is not for granted to get in Coromandel Town.

All beginnings seem to be hard, one just needs to relax and nurture the fact that continuity will lead to joy, success, well-being and more self esteem.

And not to forget about that certain "Team Spirit" moving individuals developing after a while. There are some great talents right here and all children deserve to have chances to discover themselves to have fun, achieve more and live happy.

This after-school activity is based on the childrens' motivation and parents' interest. We will be alternating with gymnastics (July, August). The AGM for gymnastics classes will be held on **Wednesday 27 June** at the School Library.

Thanks to Yvette, Carolyn, Anna, Claire, all boys and girls and supportive parents/grandparents!

.... let the dance begin in Coro!

Tina Hoffmann, Performing Arts Teacher, Movement and Body Therapist

Hauraki Gulf Mussel Farms and the Environment (Natural and Human)

By Gilbert James, Chair, CoroMFA



The Coromandel Marine Farming industry produces 26,000 tonnes annually (1/3 of NZ total) of top quality greenshell mussels and 500 tonnes of prime pacific oysters.

It creates some 350 fulltime equivalent direct (FTED) jobs in the Thames Coromandel District, plus supports more in seafood, tourism and charter fishing primarily within the farms. Coromandel mussel and oyster farming contribute \$70M annually of GDP to this District alone. Another 400+ FTED jobs in adjacent Districts rely on marine farm produce from Coromandel. Many more jobs are also created indirectly such as in servicing, transport and retail. The industry is vital to the communities of northern Coromandel, supporting vital services, clubs and events, and providing valuable employment and income to a population equivalent to the whole town of Coromandel.

At the heart of the industry is the sustainable production of world-class seafood. The Gulf is not just our office – it is our backyard and our future – and we are protecting and enhancing it.

While New Zealand's farmed greenshell mussels and pacific oysters have already been recognised among the world's greenest seafoods, our farmers are now adopting the A+ Sustainable Aquaculture programme, which sets world leading aquaculture standards. In support of these standards we conduct an environmental programme that includes at least annual beach clean-ups and disposal of all beach litter. For example, the biggest group of farms at Wilson Bay has done three-monthly beach clean-ups for 15 years since 2002, and kept careful records. They advise that the amount of litter from the marine farms is miniscule compared with that from other marine users and land-based rubbish.

Some mussel floats (buoys) are lost from farms despite our best efforts, reflecting the periodically rough Gulf environment. These are recovered as soon as possible after coming ashore and if found by a member of the public our Association pays \$15 per float to the charity of your choice, on behalf of the company that owns each float. For more information, please email tom@hrm.co.nz or phone 027 495 3957.

All NZ marine farms since 2005 have been fully under the control and management of regional councils under the Resource Management Act. For Coromandel that means Waikato Regional Council and for the western and northern Gulf, that means Auckland Council. We believe these councils do a good job of managing marine activity (eg, through the community agreed Regional Coastal Plans) and of assessing and monitoring marine farm performance and compliance.

We are always conscious that we share the Gulf and we actively work with representatives from all sections of the community, including boaties, fishers, scientists, conservationists, universities, businesses, councils and central government, to help secure a healthy, productive and sustainable future for the Hauraki Gulf.

The "eco-system services" from marine farms (eg, food, shelter and good water quality) are why mussel farms are the best place around to go fishing, supporting more than a dozen FTED jobs in the very successful Coromandel recreational charter fishing industry.

Our livelihoods depend on the health of the Hauraki Gulf and we'll keep doing all we can to protect it. Mussel and oyster farming requires and upholds high water quality. We assist seabed quality. We assist mussel reef restoration. We do it because it's important to us. Hauraki mussel and oyster farming is good for our local communities and families and good for the Hauraki Gulf.

**Driving Creek Railway****Adventures in Art, Engineering and Conservation**

Tours for 2 adults or more will be at the following times until 30 September:
10.15am, 11.30am, 12.45pm, 2.00pm,
3.15pm, and 4.30pm

(please ensure that you arrive 20 minutes prior to these departure times)

Bookings advisable for all tours

Phone 07 866 8703 or 0800 DC RAIL

Email: bookings@dcrail.nz www.dcrail.nz

380 Driving Creek Road, Coromandel 3506



Small Motor Repairs

**Winter Special**

All Victa Instock
\$100 Trade-in
of any mower
going or not,
conditions apply.

**Come along and see us at 18 Kapanga Rd
Rob & Carolyn 866 7865 or 021 618 601**

Library News

By Raewyn McKinney

This month we are pleased to announce that we have commissioned a cabinet to house our collection of heritage books. Unfortunately, this collection is not large at present, due to the difficulty we have faced over the years in retaining these books, which have often not been returned when they have been borrowed by subscribers. The decision has therefore been made to house them in a purpose built cabinet and allow them to be read or used for reference inside the library only. Once the cabinet is in place we plan to increase this collection, and would welcome suggestions of suitable publications. The cabinet is to be built locally from locally sourced native timber, and it will be paid for from funds donated to the library by Dr Deirdre Airey. As most people know, Dr Airey was a keen supporter of the library, being the president of the original building fund. On her death, she bequeathed a sum of money to the library, for furthering interest in reading, particularly among young people, and the interest from this money has been used over the years for projects assisting literary endeavours in local youth and to assist schools in purchasing books for young people. This year, the committee has decided that the interest will be used to purchase the cabinet and that the collection will be known as the "Deirdre Airey Heritage Collection".

New titles purchased this month include the latest from M.J.Arlidge, Lee Child, Paula Hawkins, Anne Holt, Karen Rose, and Anita Shreve, plus:



Heloise by Mandy Hager

Heloise is a determined young woman with an exceptional mind, longing to pursue learning rather than marriage or life as a cloistered nun. Her path inevitably crosses with Peter Abelard, the celebrity philosopher,

theologian and master at Paris' famed Cathedral School. When two such brilliant minds meet and engage, sparks are likely to ignite. But theirs is an impossible love.... Based on meticulous up-to-date research and the pair's own writings, this novel offers a plausible interpretation of the known facts and a vivid imagining of the gaps in this legendary story. It shines a light on a changing world whose attitudes and politics are not so very different from our own.

What Cancer Taught Me by Jake Bailey



"None of us get out of life alive, so be gallant, be great, be gracious, and be grateful for the opportunities you have." Jake Bailey's inspirational end-of-year speech

as head boy at Christchurch Boys' High School was delivered from a wheelchair just one week after he was diagnosed with the most aggressive of cancers. As he lay in hospital fighting to stay alive, his speech grabbed headlines around the world. Jake's cancer, and that speech, became the start of a bigger journey that continues today. In this remarkably honest account of his illness, treatment and recovery, Jake shares all that the experience has taught him. His book is an uplifting call to action for people of all ages.



The Killing School by Brandon Webb

As a SEAL sniper and combat veteran, Brandon Webb was tasked with revamping the U.S. Naval Special Warfare (SEAL) Scout/Sniper School, incorporating the latest advances in technology

to create an entirely new course that continues to test even the best warriors. In this revealing new book, Webb takes readers through every aspect of the elite training... Webb also shows how this training plays out in combat, using real-life exploits of the world's top snipers.

The library is open from 10am to 1pm on Monday, Tuesday and Thursday; 10am to 4pm on Wednesday and Friday; and 10am to 12 noon on Saturday

Coromandel Walking Group

By Irene Dunn

We seemed to have dodged the showers most walking days lately and it's great to be out in the fresh air exercising. Sometimes it's hard to make the effort to walk in winter, especially if the weather is dodgy, but it's so good for our health and catching up with friends. If you are new to town or just want some encouragement, do join us. We meet each Tuesday and Thursday at the Lotto Dairy at 9am – we walk for an hour then head back to a cafe for that welcoming cup of coffee. (P.S. We are good at talking as we walk!) We have recently walked the Long Bay and Kauri tracks – always nice to be in the bush.

Welcome to new walker Glenda – hope you enjoy walking with us!

Phone Ruth on the number below for more info.

Happy walking everyone.

Contact Ruth (07) 866 7246

WANT
NATIVE NURSERY & EDIBLES
WAITAIA RD, KUAOTUNU

A wide range of beautiful natives,
palms and fruit trees.

Potting mix, compost, mulch, chook manure.

Open Thursday- Sunday 9-5 or by phone appointment

Please phone Claire & Colin Hill 07 869 5910

 **Tangiara**
Kiwi Retreat

Luxury bush chalets

Private outdoor spas

Come find your paradise

**Café/restaurant will be closed
for July and August
however bookings
can still be made
for accommodation**

A picturesque 1 hour drive North from Coromandel Town.

Ph 07 866 6614

www.kiwiretreat.co.nz

1299 Port Charles Road, Port Charles, Coromandel



NEW LISTING



Coromandel

'Resort' to Living the Dream...

It's all about lifestyle at this impressive home...

- 4 bedroom 3 bathroom, 2 storey residence
- Huge family lounge, formal lounge & dining, open plan kitchen, outdoor entertaining
- Harbour views, private jetty & sea access
- Triple garaging with guest brm & ensuite
- Heated in-ground swimming pool, spa & fire pit

You'll have trouble discerning between a weekday and the weekend living at your very own resort!

Guest lodge? big family home? view to appreciate!

Open Saturday 1st & Sunday 2nd July 1-2pm

2751 Long Bay Road

For Sale by Tender - Closing 4th August 2017

www.harcourts.co.nz/CO1864 (unless sold prior)

FINAL NOTICE



Whangapoua

Whangapoua Beachfront!

The Ultimate Kiwi Waterfront Dream..!

- Classic retro 70s holiday bach by the sea
- Triple bedroom up, triple garage down
- Big open plan lounge on to sunny decks
- Big flat rear lawn for boats, cars, tents n kids
- Step onto the sands and into the sparkling seas

Here's your dream come true at one of the worlds most outstanding & loved holiday locations, fabulous Whangapoua & neighbouring New Chums beaches...live the dream!

For Sale by Tender - Closing 30th June 2017

www.harcourts.co.nz/CO1859

Harcourts

New Zealand
YOU HAVE VOTED US
your most trusted real estate brand

5 YEARS RUNNING

harcourts.co.nz

Harcourts Group Ltd is a Licensed Agent REAA 2008



*Statistics based on correct figures on 15th May 2017

NZ's Most Trusted Real Estate Agency

2013, 2014, 2015, 2016 & 2017 (Readers Digest Annual Business Survey)



BEAUT BACH



Kennedy Bay

Beaut views over the valley and out to the bay from this great 2 bedroom holiday bach. Nestled amongst bush borders on a generous & elevated 1789sqm section. Just turn up, everything is here...

For Sale \$299,000
www.harcourts.co.nz/CO1861

LIFESTYLE



Waikawau Bay

Just a short distance to the white sand of Waikawau beach sits this yet to be completed sleepout - the perfect base for your holiday fun. Keep this little number as is or use it as the building block to something bigger!

For Sale \$395,000
www.harcourts.co.nz/CO1858

STUNNING



Waikawau Bay

Rugged, remote, remarkable... 10ha of protected native forest overlooking Waikawau Bay and to the Barrier beyond... Elevated house site, approved building plans & footings in - this is picture perfect!
For Sale PBN over \$500,000
www.harcourts.co.nz/CO1829

WOW FACTOR



UNDER CONTRACT

Coromandel

A seriously fabulous home for entertaining & with great B&B potential. Come & take in the quality, the spaciousness, the design & the views that this fantastic 4 brm 4 bthrm home has to offer. There is plenty of WOW Factor here!
For Sale \$799,000
www.harcourts.co.nz/CO1841

REDUCED



UNDER CONTRACT

Tuataewa

Split over 2 levels and 2 buildings, this stunning home would make the perfect holiday refuge for a large or extended family. Nestled privately amongst native forest and with impressive views of the Pacific it's sure to tick all the boxes!
For Sale Now PBN over \$599,000
www.harcourts.co.nz/CO1780

NEW LISTING



Coromandel

Handy little 1 bedroom unit situated on the rear of a cross-lease section and only a short walk to town. Open plan living, built in storage, heatpump, separate laundry, undercover parking.
For Sale PBN over \$249,000
www.harcourts.co.nz/CO1862



SOLD



SOLD



SOLD



SOLD



SOLD



SOLD



Ezy
0274 777 900



Jan
0274 788 930



Caro
021 0291 5531



Diane (Property Manager)
0210 315 613

Well-Being and Happiness Lab

By Nalan Kirsch

Warm midwinter greetings everyone! From next month I'll be offering an exciting new workshop, the Well-Being and Happiness Lab, over a period of eight weeks, starting on **18 August**. This powerful course will aid you in achieving your personal growth, building more resilience to life's ups and downs, and finding your own version of balanced happiness.

About The Sessions

This programme is delivered in a small group setting ensuring everyone receives the support they need for developing their own well-being strategies. It is designed to be a fun and practical learning-experience.

Much like in a lab setting, this course is a lot about learning, and trying, and finding out for yourself. You will gain a better understanding of the science behind happiness and well being, and what the health benefits

are. You will learn new skills based on this knowledge. You will be able to apply these new skills in your own life starting from the first week.

Each session is dedicated to a specific topic – we have happiness, emotions, self-awareness, relationships, mindfulness, meaning and purpose, mindsets, values and strengths, life goals and so forth. There will also be short videos and media presentations during the sessions to further enhance your learning.

How much time do you need?

Sessions are two hours (approx.) each week over a period of eight weeks. You will need to be committed to the eight week programme. You should also set aside about 10 minutes each day and be prepared to try out new activities at home.

Who is this course good for?

This workshop will suit anyone who wants to enhance their well being and happiness, and/

or who is interested in the topic for their own personal growth.

Dates

Starting date: **Friday 18 August**.

Weekly session times: 9.30am-11.30am (in Coromandel Town).

Cost

The cost for the entire eight-week programme is \$175, including morning tea and as course materials – payment options are available.

Numbers are limited, so please register your interest early (email or phone me). Sorry, no drop-ins. This is a dedicated eight-week programme. I may offer an introductory course later in the year if you just want a taste.

For more information, please see my website, send me an email or give me a call.

Nalan Kirsch, Well-Being and Life Coach,
lifeflowcoaching.co.nz mob. 021 515 707
nalan@lifeflowcoaching.co.nz

Coromandel Patchwork and Quilters

By Sharon Currie

Recently six of our members attended a two-day class with Shirley Sparks. We had a lot of fun painting on Lutrador, a product used in the building trade but now used by textile artists and quilters as a background for collage type work. We also painted on vliesofix, which is used in applique work and glues one fabric to another. On top of this base we added synthetic velvet and organza to make a small wall hanging. This was a really fun class as we learned new techniques using synthetic fabrics and also were able to practice free machine techniques to further embellish the piece we were working on. Lastly we burnt fabric away with a soldering iron to finish the piece off. This was a very inspiring and enjoyable class. Shirley is a very good tutor, sharing her knowledge and encouraging us to be creative with our work. Patchwork is not just about cutting up fabric and sewing it back together; it leads to other creative ideas using all sorts of fabrics and threads.

Our meetings are held 1st, 3rd (& 5th) Mondays of the month 9.30am- 3.30pm, St John Rooms, Tiki Rd, Coromandel. President Barb Excell Ph (07) 866 7493 Secretary Raewyn Penrose Ph (07) 866 8880

Coromandel Contract Bridge

By Judy Bronlund

In May, four of our members went to visit the Thames Bridge Club for their soup and a bun tournament. We all enjoyed the day and hope to return next year to share with them the delicious variety of homemade soups and bread. Also in May we hosted bridge players from around the peninsula to our tournament. We were sorry that we had to turn some players away. We would like to thank all of our sponsors for their donations. They were: Coro Meat Keeper, Coro Unichem, Coro 4 Square, Wyuna Studio, Coro Stationer, James & Turner, Coro Service Station, Pepper Tree, Coro Garden Centre, New Image Hair Salon, Coro Smoking Company, Driving Creek Railway, The Mussel Kitchen, Coro Garage, Coastway Cutters, Moana, Matarangi Beach General Store, Oamaru. We also thank our members for some of the seafood donations. Thank you also to members for the food provided for morning and afternoon tea.

In July members will be playing for the Individual Championships. New members and visitors to Coromandel are welcome to join us on a Monday evening at the St John Rooms.

Contact Val (07) 866 8730 or Lyn (07) 866 8858 for further information

FISHER & PAYKEL APPLIANCE SERVICES

Your locally dedicated Fisher & Paykel technician is ready to service all your Fisher & Paykel, Haier, DCS, Elba & Aspira branded appliances no matter how old your appliance we can help. Best parts price guarantee fixed labour fee, no travel fee and mobile Eftpos available.

Book Online at fisherpaykel.com

Or call our 24/7 helpline
on 0800 372 273

Fisher & Paykel

Papa Aroha Engineering LIMITED

Now servicing all makes & models of
**Lawnmowers,
Ride-on Mowers,
Chainsaws and Sharpening,
Gen Sets,
all Small Engines,
Boat Tractors
and Quad bikes**



Light Engineering & Machining

MIKE McCALL • 07 866 8469 • 027 223 7919

1060 Colville Road, Coromandel
Email: mikepapeng@gmail.com

Animal Rescue Thames

By Alice and John Parris

Thank mews to everyone for the donations of garage sale items, bedding, cat and kitten food. We also had a wonderful financial blessing which will help us through another month of care for the felines here.



Garage Sale – thank you to everyone for their support – the Queen's Birthday weekend garage sale was a phenomenal success. We had fabulous support with the advertising, pamphlets delivered for us, the sign on fence, help with loading vehicles, unloading, setting up hall, sales on day, beautiful food donated for the kitchen, and the drop down end of day. Without this level of support we could never have done what we did. To everyone who came, the day was busy and the halls laden with treasures and bargains. The funds raised will help us with another month's worth of care for the unit.

Kittens – our flurry of young kittens saw these gorgeous waifs'n strays receive love and care and they flourished, fit, fine and healthy fatties. All purrballs with cattitude and were rehomed far faster than expected but they were young and cute. That combination will always see them homed quickly. The one pictured could have been rehomed a dozen times over and even I was more than tempted, but they found forever homes. The older kittens still wait patiently in the hope that one day they will be chosen to reside in their own warm home with owners to call theirs and theirs alone. For now though they are halfway to home, praying for that forever home to be theirs.

We were trying to sort the mews letter we do monthly and our ancient computer crashed and froze on us – which landed the computer to Home IT solutions in town to see what we could save and do with it – \$311 later the hard drive removed and put into another system as the motherboard in the old computer of ours had died. Scary times as that computer has the only workable program we know how to use to do newsletters and also 18 years of rescue photos – the photos they have put onto a stick for us, so those are now well safe. We attempted to do newsletter on Windows Word, but that was useless and appalling to work with so we are grateful to have our old Windows XP with the Greetings 2000 program working again. The joys of modern technology.

Wanted – homes for our older kittens and cats who still wait for that forever home to go to six months to two years (most shapes and most sizes) – they will make awesome lap warmers and mouse patrollers, all desexed, wormed and deflead. Also winter bedding, wheat bags, blankets, hot water bottles. Donations of cat and kitten food – biscuits, tinned, sachets all appreciated.

Meow furr now.

All enquiries purrlease contact Animal Rescue Thames, 532 Thames Coast Road, Te Puru, Thames 3575. Ph (07) 868 2907

The Adult Literacy Rural Trust

Volunteer Coaches needed for August Training

Transitioning from paid employment to "retirement" is a multi-faceted process. That wonderful opportunity for self-indulgence, on frosty mornings especially, is certainly one of the bonuses. Yet it comes as no surprise that "retirees" are amongst the most active and committed of the country's volunteer brigade. The desire to make a contribution to our increasingly diverse society does not end with that final wage or salary payment.

The not-for-profit Adult Literacy Rural Trust offers an opportunity for volunteers to make a huge impact – for good – on an individual's life, and all without leaving the comfort of home. If you enjoy reading and communicating with others, this could be an ideal avenue of community service for you.

All you need are basic computer skills (since the training and coaching is done online); and a readiness to commit to talking with an adult learner half an hour a day, preferably three to five days a week. There's even scope for "job-sharing": adult learners do best when talking with a familiar face, though, so it's ideal if paired coaches can give 30 minutes two or three days a week most of the time.

The Trust provides full training and ongoing support for its volunteer coaches. There's an initial training course of five modules which need to be completed over a five-week period, supported by a tutor. A new scheme is being piloted whereby new coaches can join the training at anytime over this period and modules can be done in the volunteer's own time. Then, during the regular interaction with an adult learner, usually someone who is in a rural or isolated environment, coaches can access an experienced tutor for assistance or advice as required.

The role is immensely rewarding for our literacy coaches, who come from all over the country and even overseas. Moreover, this is one "job" for which there is no age limit!

You can find out more about this remarkable Trust, its goals and achievements, by visiting our website www.adultliteracy.ac.nz, contact us on Freephone 0800 891 339 or email wendy@adultliteracy.ac.nz.



Want to win \$1,200?

Easy. Sign-up a regular team for our Quiz Nights and get ready to rumble!
Admirals Arms Hotel—07 866 7069

Rules:

1. Groups of 2-6 people can form a Quiz Team
2. Teams must be registered for a result to be counted, and must register for the first time before a quiz session starts
3. The competition will commence on Wednesday 21 June and end on Wednesday 20 September which will be the final Quiz night. The winning team will be announced later that evening after results have been fully analysed
4. Teams may register up to Wednesday 2 August with 8 weeks of competition ahead, but no previous wins will be counted
5. The winner will be the team with the greatest number of wins over the 14 week period. In the event of a draw, the team with the greatest accumulated points total will be declared the winner. The prize will be distributed evenly amongst the registered team members
6. The same team members must compete on each occasion. No temporary substitute members, but a team can still compete if some team members are absent. Permanent replacement members, due to un-avoidable circumstance, will be accepted at the discretion of the Quiz Master
7. Eligibility for result on each Quiz night to be counted: The team must have bought Food costing \$12 or more per head after 5pm, with till receipts pinned to an answer sheet handed in anytime up to the half-time break
8. Each Quiz night will still have ordinary prizes open to all whether registered or not
9. Standard weekly prizes being beverage vouchers of \$50 first, \$25 second and \$10 third

146 Wharf Road, Ph 07 866 7069

Like us on Facebook search "Admirals Arms Hotel"



Excavators | Tip Trucks | Bobcats | Auger & Chain digger hire
Skip Bins | STMS Services | Septic Tank Services | Portaloo Hire

1020 Tiki Road, Coromandel
p. (07) 866 8308
e. jamesdrainage@xtra.co.nz

Illume Community Meeting

It was great to see such a good turnout at the community meeting to discuss the future of Illume.

The vision of Illume was birthed in 2012 with the goals of stimulating growth in the community, improving employment opportunities, and supporting the business community over the winter months. From that time onward considerable work has been put in by volunteers to make Illume bigger, brighter and better each year. At inception the Coromandel Business Association (CBA) envisioned that Illume would be a festival that everyone can be involved in and our youth can be proud of. They wanted to bring fun and laughter to all ages of the community; organisers have certainly achieved these goals and more.

The CBA does not want any person in our community, regardless of age, to miss out on the fun and for this reason they made it a free event. It is a hard festival to run with the many areas that need to be managed. With the TCDC Major Event Sponsorship funding at an end, the CBA needs to find alternative sources of funding to make Illume viable.

Attendees were asked to give feedback about Illume. Here are some comments that we received:

What I like most about Illume is:

- Community involvement
- Fun family night
- The fireworks were amazing
- It needs to be kept to school holidays as there are lots of holiday homes in Coromandel and Whitianga where families stay
- Friendly atmosphere
- Lovely atmosphere
- Dressing up
- Village (small town) atmosphere
- Just awesome

What is the one thing I would change in Illume:

- People go around with donation tins
- Make it a spring light-art festival/competition. Wearable art, technical art, mobile art, etc
- Have it during the school term so school can be involved
- Need an announcer and PA system to inform all and sundry what is happening, eg, when fireworks are about to start or entertainment in various parts of town. Important so people don't miss aspects of the festival
- Town Cryer announcing events as they happen
- Nothing
- Get the shopkeepers on board, light every shop up!
- Lights on the top of the buildings like James and Turner

What is the one thing I like least about Illume?

- There should be an area with chairs for older ones to sit and wheelchairs and someone monitoring that so people don't stand in front of them when parade is on.

A number of people volunteered to assist with the 2018 Illume and a meeting will be held soon to bring these people together. It is not too late to join the team – if you are even a little bit curious please send us an email at corobusiness@gmail.com or pop into the Information Centre with your contact details



Singing and Taizé

By Sue Gilmer

Six of our Coromandel singers have joined a group meeting each Sunday afternoon in Thames, which is working towards performing "The Messiah" in mid-November. A big ask!

It's a totally different experience from the singing which we do on Monday nights. The group in Thames start straight into voice exercises. After this, the thick scores come out and its head down for two hours, our eyes glued to the music with the brain working overtime reading, concentrating, always checking that we have it right.

In contrast, our Monday singing sessions start with chatter, hugs and catch up before we go into more relaxed exercises to bring the group together. We learn through listening and not by being given music to read. We are encouraged to switch out of the mind as much as possible, let go of trying, and relax to let the music be absorbed as much as learnt.

These are two totally different ways of learning. They both work. There's something special about a group of people coming together to create music. The common factor is that, for both groups, when we get it right a "wow" factor happens that's difficult to explain.

If anyone is interested in joining "The Messiah" group, you can contact Gill at gillmbenton@gmail.com. For more information about our Coromandel group, please phone Sue (07) 866 8833.

Coromandel Budget Advisory Service

By John Gaffikin-Cowan.

Going well!

The move to Tiki House has been surprisingly simple and amazingly welcomed. Our clients are whole-heartedly behind us being in the centre of town, close to all the other community amenities, including medical and pharmaceutical support. In the couple of weeks we have been in our new home, every single visitor has complimented us on being so close to all other local services. And in the short time we have been here, we have seen a surprising increase in the reference of clients back and forth between the various agencies which operate out of this building.

As far as our actual move is concerned, we have to acknowledge an enormous gratitude to Jean Ashby and the Coromandel Work Co-op whose energetic support and hard work enabled us to shift from our old Rings Road site with such painless ease. And we cannot find enough words to thank Jack Carson for his wonderful carpentry skills providing shelving for both Budget and the Foodbank.

This is all very Coromandel. We are good at adapting to change and circumstances. For those who remember, it's all a case of "keep calm and carry on". In the days when that was a catchword, we were good at helping our neighbours. That's what the Budget Service is all about. Helping people to help themselves. Getting people to empower themselves. Recognising our problems and making a strong resolution to fix them. And asking for someone to hold our hands while we're going through that process.

If you wish to make an appointment, the Budget phone number is (07) 866 8351 where you can talk to Anna, Caro, or John. The office at Tiki House is open Monday to Wednesday 9.30am - 12.30pm with Foodbank pick up on Thursday 10-11am. The Budget cell phone number is 022 018 0849 – we reply to texts and messages during office hours



Coromandel Garage Ltd

What we offer:

- Service and repairs on all makes and models
- WOF's
- Motorcycle WOF's

- Pensioner WOF's \$40
- Call out's & tow in's
- LPG bottle swap & filling
- Car & trailer hire

BP Card Accepted

Best Value for your money with over 40 years of combined experience from our two fully qualified mechanics.

Coromandel Garage Ltd, 226 Wharf Rd, Coromandel. 07 866 8736

Proprietors: Darius and Hilary Visser



DYNAMIC TREE CARE

PROFESSIONAL ARBORIST

Council approved contractor

Fully equipped

Qualified & Insured

Free quote

027 451 2224

www.dynamictreecare.co.nz

Rangatahi

CELEBRATING
OUR CHILDREN

Coromandel Area School

By Jamie Leckie

Where has this term gone?
The tail end of Term Two has been an exciting one, with a lot happening throughout the school.

Cross Country 2017

The Cross Country was a successful day with Colville School and Coromandel Community Preschool joining us for the day. A big thanks goes to the Coromandel Golf Club for the use of their facilities for the day. Many thanks to all of the wonderful parents and whanau who came along as helpers for the day and even ran with the children. Also, a huge thank you to our Sports Coordinator for organising the day; many hours of planning went towards making this day successful.

Stoat traps

The Moehau Environment Group have been working with the Year 5/6 class this term to build stoat traps for their Coromandel Kiwi Project. Below is a piece of writing that explains the procedure for making a good stoat trap.

How to make a good stoat trap – By Kiani

Materials: top wood, bottom wood, side wood, nails, hammer, cordless drill, wire mesh, wood the length of kiwis' beaks.
Steps: Place sides upside down. Place bottom

COROMANDEL
AREA SCHOOL



on the two sides and make sure that the two sides are even with the bottom. Nail the bottom to the sides of the box and turn it over. Put the mesh in and make sure hole is on the left side of the box so kids can't get their hand stuck. Staple mesh with no hole at the back and put the mesh with the other hole but do not put the hole on the left side, put it on the right side. Put the doc 200 in the trap and screw the screws in the two holes. Screw the top on.

Now you have a DOC200 trap.

Netball Courts

Following input from a large number of interested stakeholders who attended the lead-up meetings to the school/community netball development, we are absolutely delighted to say the week of 12th June is when phase 1 – the resurfacing of our existing courts – is underway. WOO HOO!

Phase 2 – the international spec court is in the final planning and consultation stage. TCDC are great – they have been more than pro-active and they have been our allies in the project to benefit Coromandel Town. We will keep you posted. In the meantime, feel free to pop by and check out the progress.

Emergency preparedness

Coromandel Area School is ready and



Cross Country

willing to help out the town – we are working with Peter Richardson and Nigel Strongman to make the hall at our school self-contained with power in the event of an emergency which would require accommodation and/or the establishment of a safe place. At a recent meeting of emergency services and dialogue about the possibility of the school being needed as a base, we are pleased to be putting energy again into projects that will benefit our entire community.

Advance notice about the Christmas Parade

Christmas Parade: **Saturday 9 December** at 2pm. The theme is Christmas, of course, but with a 1970's flavour. We would love to see you there. If you wish to enter a float, please do so by contacting Murray (07) 866 8893 xtn 202. There will be lots of timely reminders.

School Holidays

Thank you to all of our students and whanau for an enjoyable term. We hope you have a restful break, set to go for Term Three.

Driving Creek Cafe and Book Store

WINTER HOURS

9am-4pm Tuesday to Sunday.

Closed Mondays.

Closed for August - Re-open 1 September.



180 Driving Creek Rd, Coromandel
07 866 7066
drivingcreekcafe.nz

Te Rerenga School

Learning, it's what we do...

By Anna Yates



We have a number of student-led inquiries happening throughout the school this term with children involving themselves in learning at every opportunity...even their busy break-times!

There is a gentle hum of a busy incubator in the Principal's office where hen eggs are developing. A schedule has been made to turn these eggs three times a day and we are looking forward to hatching 10 eggs very soon.

A number of our junior students have decided to develop and beautify different areas of the school. They are bringing plants from home to develop areas of the field into the most amazing place for them to enjoy every break-time.

Some students have created a horse jump from flax and tyres and take turns practising jumping over this with increasing levels of difficulty.

A group of boys are transforming the slide into an obstacle course for cars and are working together to make this so much fun during their break-times.

Room 1 are investigating all of the pests in their gardens and have identified caterpillars and aphids. They are now developing some ideas to stop these pesky creatures eating their much-loved plants.

Both inside the classrooms and out... there is a whole lot of learning, inquiring, wondering and thinking going on at our school!



Ella jumping the horse jump

Coromandel Community Preschool

By Debra Attwood



Into the second half of the year already, we are working on getting our fantastic mural completed. It will be a fantastic addition to our centre and for the community. During the month of June we have been discovering different ways to celebrate Matariki and at the end of June we will hold our annual Matariki Centre Hangi. This is always very well attended by our centre whaanau.

At present we are working on a Centre self-review of our literacy learning and how our learning through play philosophy encourages and develops literacy concepts with our tamariki. We aim to provide the foundations for children's literacy learning through play; such things as climbing builds many skills for literacy such as strength, motor planning, sequencing, eye-hand coordination and perseverance. Playing with water gives real-life experience of language such as warm, cold, icy, wet, splash, pour drip. Working with puzzles promotes visual spatial skills, coordination, and problem-solving skills. We believe that play is at the heart of all learning. Albert Einstein said that "play is the highest form of research" so we follow a child's lead and focus on their interests. Through play the children develop resilient dispositions that strengthen their cognitive, socio-emotional and physical skills.

Since our last report we have celebrated a birthday for Emelia and we wish her a very happy birthday and we said farewell to Kyron W, Zianna and Jack who begin their learning journey at school.

We have limited spaces available in both our under-2's and over-2's so if you have a child this age and are looking for a quality early childhood centre come along and see if this is the right place for you and your child to begin their lifelong journey of learning. You can put your child's name on the waiting list if required. Check out our latest Education review on the website: <http://www.ero.govt.nz/Early-Childhood-School-Reports/Early-Childhood-Reports/Coromandel-Community-Preschool-18-11-2013>.

The centre operates Monday to Friday 8.30am-4.00pm. We are situated at 155 Pottery Lane. If you are interested call in for a visit or phone us on (07) 866 7570

Coromandel Youth Group – Hauraki House

By Nadine Smith

School Holiday Times

Opening times for both weeks are - Monday, Tuesday, Wednesday and Thursday 11am-4pm, Friday Night Social* 6-9pm, Sunday 1-4pm.

Activity Fee is \$2 for Monday to Thursday sessions. For 5-year-olds and over, there will be a variety of activities to choose from. Just fill in a membership form and bring your child along with a packed lunch or money to purchase snacks, pies or hot chips.

School Term Times

Sunday 1-4pm, Tuesday and Thursday 3-5pm, Friday after school 2-4pm.

*Friday Night Social 6pm-9pm is for students aged 11 to 14 years of age. All students must come inside and sign in upon arrival. For more information call in at the Youth Rooms or telephone us on (07) 866 7061.

Parents are welcome to browse our fundraising table for Nu 2 U bargains.

This programme is made possible by kind donations received and grants from: Lottery Waikato, COGS, Trust Waikato, Coromandel Senior Settlement Trust. Thank You!

COROMANDEL & AUCKLAND FERRY

TIMETABLE EFFECTIVE TO 31 DECEMBER 2017



Departs Auckland: Pier 4, Quay Street							
	M	T	W	T	F	S	S
12 Jun - 15 Oct	-	-	-	-	-	8.45 am	8.45 am
16 Oct - 22 Oct	-	8.45am	-	8.45am	6.40pm	8.45am	8.45am
23 Oct - 29 Oct	8.45am	8.45am	-	8.45am	6.40pm	8.45am	8.45am
30 Oct - 24 Dec	-	8.45am	-	8.45am	6.40pm	8.45am	8.45am
25 Dec - 31 Dec	XMAS	8.45am	8.45am	8.45am	8.45am	8.45am	8.45am
Departs Orapiu to Coromandel: (approximate times)							
12 Jun - 15 Oct	-	-	-	-	-	9.50am	9.50am
16 Oct - 22 Oct	-	9.50am	-	9.50am	7.45pm	9.50am	9.50am
23 Oct - 29 Oct	9.50am	9.50am	-	9.50am	7.45pm	9.50am	9.50am
30 Oct - 24 Dec	-	9.50am	-	9.50am	7.45pm	9.50am	9.50am
25 Dec - 31 Dec	XMAS	9.50am	9.50am	9.50am	9.50am	9.50am	9.50am
Departs Coromandel: Hannafords Wharf							
12 Jun - 15 Oct	-	-	-	-	-	4.30pm	4.30pm
16 Oct - 22 Oct	-	3.00pm	-	3.00pm	8.45pm	4.30pm	4.30pm
23 Oct - 29 Oct	4.30pm	3.00pm	-	3.00pm	8.45pm	4.30pm	4.30pm
30 Oct - 24 Dec	-	3.00pm	-	3.00pm	8.45pm	4.30pm	4.30pm
25 Dec - 31 Dec	XMAS	4.30pm	3.00pm	3.00pm	3.00pm	4.30pm	4.30pm

Auckland - Coromandel			
	ADULT	CHILD	FAMILY
ONE WAY	\$55.00	\$35.00	\$145.00
OPEN RETURN	\$90.00	\$55.00	\$235.00
Waiheke Island (Orapiu) - Coromandel			
	ADULT	CHILD	FAMILY
ONE WAY	\$35.00	\$22.00	\$92.00
OPEN RETURN	\$60.00	\$35.00	\$155.00

Child definition is 5-15 years inclusive.
Family definition is 2 adults + 2 children.

Please note:

A Sunday service operates on public holidays, except Christmas day.

In the event of cancellations 360 Discovery may arrange alternative transport arrangements.

A ferry bus shuttle will transfer you to and from Coromandel Town (Samuel James Reserve car park) and Hannaford's Wharf. There is no additional fare for this service.

Timetables and fares are correct at time of printing. 360 Discovery reserves the right to change fares and departures without notice. Full terms and conditions of travel are available online.

360 DISCOVERY
CRUISES

Mana Update

By Donna Idol

Winter, when you feel the bone structure of the landscape – the loneliness of it – the dead feeling of winter. Something waits beneath it, the whole story doesn't show. – Andrew Wyeth

Winter can be an opportunity for quiet intimacy with one's own life and thoughts – snuggled comfortably in a warm spot or hatted and coated against the elements, with time to wander through the revealed landscape of place, memories and longings.

I recently retired from managing Mana for the past twelve years and am feeling the spaciousness to immerse myself anew in the beauty of all that life in Coromandel has to offer. I am so grateful to live here. I spent my childhood summers at Oamaru Bay, in the company of our sturdy twelve-foot clinker dinghy, messing aimlessly about. The Coromandel Town bakery in those days had a tea-tree fired oven that baked delicious brown and white bread. Whole loaves never made it back to the bach!

After living in the USA for many years it was with relief and delight that my "wannabe Kiwi" husband Bill and I arrived at Mana for the summer solstice working bee in 2004. A few weeks later I had the good fortune to begin working at Mana, in the ultimate job of my thirty year management career. What a privilege to live and be in service surrounded by such natural beauty and people who strive to live with kind awareness toward all! Living toward our ideals is not without challenges but the conditions at Mana and in Coromandel Town have made this more possible than in any other life I can envision...

I have experienced an abundance of friendliness, generosity, kindness and beyond-the-call-of-normal-duty service from the local community and businesses that Mana goes out of its way to use. Our small town is blessed with the skilled professional services available. Coupled with helpful, flexible attitudes, inconvenient malfunctions (especially when looking after 50 or so guests) and major emergencies are much easier to handle. It was so reassuring when half a dozen emergency vehicles showed up at Mana in response to a serious medical emergency full of unknowns: ambulances, doctor's and nurse's vehicles, plus both the Manaia and Coromandel fire trucks with full teams – it was quite a dramatic moment to manage as the meditating group on retreat at Mana filed silently out of the bush into the unexpected activity! On another occasion the beautiful labyrinth became an emergency helipad for the rescue helicopter which transported a retreatant who had become unwell climbing Pukewhakat-aratara to hospital. (A lot of muscle had been needed to carry him from the mountaintop to the "helipad"!). But above all, it is the everyday smiles and the friendly personal service that nourish our amazingly good lives here. Thank you everyone.

Environmental**Split Community**

By John Veysey

This year I have been introduced to a number of local communities, enviro-groups and individual landowners in the context of wild animal control and have found only discord. The discord comes from the use of poisons. The greatest discord arises when these poisons are spread from the air.

Very little is understood about the long-term or the sub-lethal effects of these poisons and, when animals and birds and insects are seen to die from one of these poisons, doubt, disgust and fear are the natural responses.

The government recently celebrated 30 years of increased animal poisoning in NZ. No amount of pleading from a growing body of concerned public has slowed the flow of these poisons. All of the cost-effective reasons given for using these poisons have long since been debunked by the government's latest round of possum control in the South Island using double the usual dose of aerial baits. In this exercise I have calculated the baits alone will cost about \$50/ha. The government refuses to consider cheaper, more effective and more socially acceptable methods of wild animal control.

The steady continuation of the poison steamrolling over our country may look like a conquering. The social divisions being created by NZ's wild animal poisoning are undeniable. These divisions are expanding; they are unnecessary and they are very sad.

Public money, taxpayer money and rate-payer money, fund this animal poisoning business. Those in receipt of any of this money will speak positively about poisoning animals. Those who used to rely on wild game for food will tell us their livelihoods have been destroyed.

Wild game is no longer safe to eat. It is no longer safe for us to eat; it is no longer safe for our fellow creatures, the hawk, the kingfisher, the morepork or the insect, to eat.

For 30 years we have been trained to think that poisoning is the best way to control wild animals. The government has done practically all of its wild animal control on the peninsula using poisons.

Here we are in 2017 facing another round of government poisoning of our wild animals and, sadly, further, deeper divisions in our community have been the result. I have long been advocating a wild animal control policy which would unify and involve all landowners behind a mutually agreed policy.

MEG Winter lecture Series

MEG has been grateful for the generous support of Moon hairdressing and Wharf Rd Café in launching these lectures but due to the numbers attending the following lectures will be held at Pepper Tree.

Monday 10 July 7pm Pepper Tree – Dr Colin Miskelly, Curator Vertebrates, Te Papa.

MEG is proud to announce that Colin Miskelly is coming to Coromandel. Te Papa curator and bird nerd Colin Miskelly has travelled the world and to some of the world's most remote islands and is now specifically coming to Coromandel to give a MEG winter lecture. "Impacts of creating an urban sanctuary," 21 years of bird counts in Zealandia/Karori Sanctuary.

Colin was the Department of Conservation representative on the Karori Sanctuary Trust Board from 1998 to 2010. He was a DOC staff member for 19 years before joining Te Papa in 2010, where he was the driving force behind the creation of the New Zealand Birds Online website launched in 2013.



Dr Colin Miskelly



retreats
workshops
events

Mana Retreat Centre, Coromandel New Zealand

Full schedule on our website manaretreat.com

Auckland 8 July	Retreat in a Day - Change as a Catalyst for Transformation w/ <i>Hilary Star & Kanya Stewart</i>
July	Closed for Maintenance
4-6 Aug	Winter Yoga Retreat w/ <i>Denise Ferguson</i>
18-20 Aug	5Rhythms Dance and Yoga: Wisdom of the Moving Body w/ <i>Sacha Paddy & Neal Ghoshal</i>
1-3 Sept	Fathers' Day Relax Weekend

Spaces available Contact be@manaretreat.com or 07 866 8972

UCLA July Conservation Report

By Reihana Robinson, UCLA spokesperson

Once again we find the Department of Conservation (DOC) acting in conflict with the wishes of our community. We are asking DOC to provide some answers before they take extreme action.

The DOC has publicly announced plans for aerial possum and rat control operations to be carried out between July and October 2017 at the Papakai Reserve, Moehau, and Otahu on the Coromandel Peninsula (hereinafter collectively "the operations").

DOC has publicly stated that the operations, as planned, are the most efficient and cost effective means of achieving conservation goals.

Pursuant to the provisions of the Official Information Act, a formal request has been sent seeking the following information:

1. All operational and performance monitoring results for Moehau for the past four years, including but not limited to:

- a) canopy re-growth,
- b) trunk/stem size of threatened species, such as northern rata or kohekohe
- c) abundance of rare species protected, in particular all species of weta, bats, frogs.
- d) Kiwi, robin, kōkako, kereru, ruru, stick insects results are also requested.

The control sites for tree monitoring can be assumed to be the same plots that existed prior to the departure of Pim de Monchy so those results should be easily obtained.

2. Operational figures for possum, rat and stoat [rats bounce back after aerial 1080 to plague numbers within 24 months (Sweetapple & Nugent 2007) posing a serious threat to birdlife].

3. A copy of the performance contract DOC has with the helicopter company and

- 4. All performance contracts with 1080 poison workers.
- 5. All financial estimates of the entire operation including:
 - a) direct and
 - b) indirect costs,
 - c) plus provision for post-drop monitoring
 - d) any costs for planning; supervision, monitoring (performance and operational); public consultation; relevant consent procedures; provision for repeat of failed operations; administration and overhead; the cost of any liability arising from an operation (e.g. liability for the death of livestock).

The locals who all live around Moehau and who do not want aerial 1080 have been through this in the 1990s and again in 2013. All continue to kaitiaki the lower slopes and surrounding area. It would appear from the historical records that DOC has worked with locals. Why not continue the "alternatives" using the existing tracks?



McGregor Bay Wetland Society

By Sue Wright and Carol Sutherland

As you drive out to Long Bay, or Wyuna, on the right of the causeway along McGregor Bay is the McGregor Bay Wetland (sometimes known as the "Long Bay Wetland").

People stop on the sea side but few know about the town's nearest wetland which is a small remnant of the original. There is no access; what is in there? What's the point?

New Zealand has lost over 80% of our wetlands, which are the land's kidneys that aid water purification, flood protection, shoreline stabilisation and provide habitat for wildlife. They are also good at absorbing carbon, therefore helping to mitigate the effects of climate change.

The McGregor Bay Wetland has been deteriorating for many years. It's in our backyard, and it is an asset, not a liability. We have grown up and realised that "drain the swamp!" is actually not a good idea.

So what's happening?

The local Forest & Bird Branch has been concerned with the need to restore this wetland for many years and this year there was a push to expand from that to form an Incorporated Society, encompass a wider group of people, not only to protect and rehabilitate the wetland

but to facilitate access. The idea is not just to construct a boardwalk into the wetland, but embrace art and education as important aspects of the project.

Funds for a boardwalk are secured and funding for a bird hide has been pledged. An application recently made to Forest & Bird for further funding to launch a co-ordinated approach to progress these objectives was successful. A grant of \$14,000 was kindly granted for the first year of intent.

The McGregor Bay Wetland Society Inc. is being formed. Its focus is a community approach to the restoration of the McGregor Bay Wetland, and it welcomes not just conservationists, but those involved with education and art; people willing to get wet taking out noxious weeds; people to help children do baseline studies improving science and data collection skills; people that get on the blower and promote the wetland to various authorities; and people that make art walk on water.

If you like the idea of combining all those things in the one place, with the possibility of walking among wildlife so close to town, then consider joining in. We hope to make it a sociable affair too. That's what "community" is all about.

mcmgregorbaywetland@hotmail.com

COROMANDEL PLUMBING

(1986) LTD

PO Box 23, 1740 Tiki Road, Coromandel



CRAIG DUDSON

Phone/Fax 866 8814

A/Hrs 866 8837

Plumbing, Drainlaying and Gasfitting



SCOTT REVELL

BUILDING CONTRACTOR



- New Homes
- Renovations
- Additions \ Repairs
- Bathrooms
- Decks \ Fences \ Landscaping

Prompt Professional Service

srevell2010@hotmail.co.nz

027 861 6592

COROMANDEL



Coromandel QUARRY & Contracting Ltd

- All grades of metal delivered
- Driveways, roading, earthworks
- Please call for a FREE quote

Telephone 07 866 8306

email: richard@cqc.co.nz www.cqc.co.nz

Arts

Coromandel Art Group

By Barbara Peddie

Every Thursday morning in winter we meet at St Andrew's Church Hall, which we are so grateful to be able to use, and to store our extensive library of art books and magazines. The heaters come on, the room warms up, and soon there is the happy chatter of our members, interspersed with quiet spells when we are all concentrating on our budding masterpieces.

And when they are finished it is customary to display them on the wall for all to view and comment upon. This is really valuable, as sometimes we can become so immersed in details of our painting we cannot see it as a whole. Our tutor Val Gray can be relied on for her succinct advice – a little shadow here, more light there, where is the eye drawn to? – and a painting can be transformed.

By the time this goes to print we will have had this year's first one-day workshop with a visiting artist, so more about that next time.



Some of us have been painting birds lately, and here is Linda Webb with her kiwi

WTS Coromandel

By Debbie Morgan

I have just spent a few days in the art room of Hauraki House with two other artists – Erica and Fran. We have been experimenting with fusing plastic bags together and having fun. We haven't managed to produce any real exhibition pieces but it was great to just spend some time experimenting to see what effects we could get. Some plastics melt and break up, some don't; some shrink and some don't. Different materials – paper, fabric, foil and thread – can be added between the layers of plastic. Erica experimented with painting on the plastic before fusing too. Once fused together the plastic can be embellished with sewing. We hope to incorporate some of the techniques into our artwork.

The shared space at Hauraki House art room is a great place to work alongside others for a few days. It is ideal for experimental work and trying something new. There is still time for other artists to join in as the space will be used all winter.

Artists' Friday will continue each month on the last Friday of the month until September. Meet with other "Coromandel Creatives" in the Art Room at Hauraki House 5.30-7pm on **30 June, 28 July, 25 August, 29 September**.

For more information contact WTS on info@wtscoromandel.org

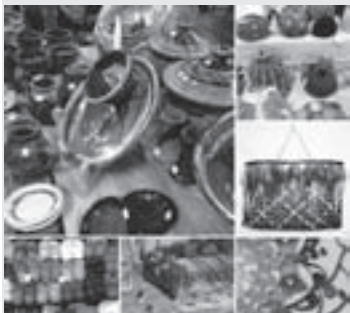


Handbag made with fused plastic

Coromandel Peninsula Art & Craft Fair

The Coromandel Peninsula Art & Craft Fair will be held at Whitianga Town Hall, 24 Monk Street, Whitianga, on **Saturday 15 July** 9am-3pm. Free entry.

The annual fair is an initiative of the Mercury Bay Art Escape Trust, showcasing quality handmade arts and crafts from artisans of the Coromandel Peninsula.



Pastel Artists Coromandel

By Christine Lunn

We are now into winter mode at our weekly meetings and after the weather related problems over the past few weeks and the addition of new members this month, it has been full house at our meeting room.

All of our new members are enthusiastic about working with pastels and they have commented on the welcome they have received and the support they are getting as they develop their skills in what is a new medium to them.

Members are now working on their projects for exhibition at Hauraki House over Labour Weekend (more later).

Some of our members' work is on display in the window of Liquor King on Wharf Road – don't forget to have a look next time you pass.

Although our group is now at a maximum for our present meeting room, we will be pleased to talk with anyone who is interested in joining the group – after all we are the only group on the Peninsula dedicated to the exciting medium of pastel.

Please call in and see us at our weekly meeting at the Coromandel Aero Club rooms on Tiki Road on Tuesdays between 9am and 12 noon (around 10am is always a good time, when tea and bikkies generally appear). Or contact: Allan Beaver (07) 866 8053 or Christine Lunn on (07) 866 7220



Allan Beaver's Palomino Horse

Thinking about a renovation
or new build and need some advice?

"Duncan is a very calm, reliable person. He gets on well with others and can see his way through problems or challenges."



coromandelconstruction.co.nz

duncan@coromandelconstruction.co.nz
(07)866-7796 021-173-7457

Steelcraft Ltd
Precision and general
engineering

Steve Norris
Paul Baylis
75 Wharf Rd
Coromandel
Phn/Fax 866 7710



Open Studios ArtsTour

We will feature a couple of artists each month in the Chronicle in the lead up to the ArtsTour in October.

Artist: Genevieve Morley

One afternoon in February when I was collecting my daughter from Coromandel Community Preschool, Belinda (the head teacher) took me aside and said that she had heard I was an artist and if I might be able to design a mural for the Resene Mural Masterpiece Competition run every year. I felt so honoured to have been asked and thought what a privilege, so I hastily agreed and set to work on a mural design that had all the components that Belinda had requested of the environment and the community. I did a bit of research, made a few mock ups where I tried to work out how you could fit one of our giant kauri trees into a mural that is more wide than tall, spent a lot of time drawing pohutukawa trees from photographs and, because I was over thinking, I still hadn't made much progress one month later. The time was ticking and I had said I was going to do it so I finally let go about "trying to" design "the best" mural and gave up to the fact that it was going to be what it was going to be.

I learnt a long time ago, I couldn't paint what I saw and get it perfectly the same. I can't even paint an image from a photograph and get it the same either and for me my art is

never perfect. My self-taught technique and ineptitude doesn't allow me to paint what I would like to paint, so I have learnt to just work with what I have and be happy with it. Spontaneous mistakes and allowing what to come is now much more exciting than getting it perfect. Art is a process of letting go and having fun and in this way it's more of a journey rather than a destination.

We won the competition and so now I'm getting ready to draw the image on these gigantic 10-meter long, primed ply boards. The mural has to be completed by November and you will be able to see it on the wall of the car park at the Coromandel Community Preschool. It is dedicated to Peter Buddle and was inspired by his love for our environment. Any offers of help to paint this mural will be gratefully accepted.

Artist: John Eaglen

Art certainly is a series of journeys. Many of them unexpected.

When I started my "Journeying" series of mixed media works I was exploring very personal journeys – my own and my parents', in England and growing up in New Zealand. From this I started a series of translucent pieces inspired by the "Great Journey" that all of our ancestors made – from being all in Africa some 70,000 years ago, through our many different routes across Asia, Europe and the Americas, to meeting

again now in New Zealand.

The challenge of the recent WTS "Making Conversation" exhibition led me to contemplate the possible conversation that might occur between an arriving vessel and the place of arrival. I chose to symbolise the arriving ship in the material I used – steel plate for the recent ships such as the Wanganella I arrived on. And copper clad oak plywood for the early European ships. To voice the place of arrival I chose the grand pohutukawa.

Now there is an unexpected turn of events. Pohutukawa, from being strong, dependable, timeless, is now endangered by an even more recent arrival.

My current task is now to celebrate the pohutukawa of our coast as precious and fragile. A new twist, an unexpected turn on an unpredictable journey.

ArtsTour artists are visitable by arrangement all year through. The Artist Guide is available from The Source, other local galleries and art shops, and from Coromandel, Whitianga and Thames I-Sites



Early stages of pieces inspired by the "Great Journey" in John Eaglen's workshop

Coromandel Players CELEBRATE 40 YEARS

Celebrate with us:
**ENTERTAINMENT
EXHIBITS
REMINISCENCES
FOOD AND DRINK**

4th and 5th August 7.30pm

At Hauraki House Theatre,
Coromandel Town.

Tickets \$15 available from
Harcourts, Coromandel Town.



Sport

Coromandel Swimming Club

By Debra Attwood

Our season ended last month with our prize giving and AGM. It was so good to see so many people come along and celebrate the successes of all of our swimmers, from the littlies in our learn to swim classes who have all improved immensely, right up to our club juniors, club members and competitive squad members. You have all put in an enormous amount of effort; I hope you have had fun along the way.

Results from our Prize Giving

6-Year-Old Girls: First – Tasman Williams; Second – Shardae Williams
 7-Year-Old Girls: First – Dianne Tuhoe; Second – Monique James-McGrath
 7-Year-Old Boys: First – Taimana Ngamane-Mokomoko
 8-Year-Old Girls: First – Te Uruwehea Downes; Second – Kokowai Uamairangi; Third – Kingsley Mackenzie
 8-Year-Old Boys: First – Billy Packo; Second – Reef Lunjevich; Third – Blake James-White
 9-Year-Old Girls: First – Brooke James; Second – Aroha Thaugland; Third – Krewz Williams
 9-Year-Old Boys: First – Te Mauri Renata; Second – Ngakau Thomas-Whittaker; Third – Layke McNeil
 10-Year-Old Girls: First – Hineariki Lewis; Second – Ella Edkins; Third – Katie Walker
 10-Year-Old Boys: First – Abhijit Jassowal; Second – Ngakau Cameron; Third – Soane Rickit
 11-Year-Old Girls: First – Charlotte Kite
 11-Year-Old Boys: First – Deveshh Bali; Second – Dylan Green; Third – Tane Williams
 12-Year-Old Girls: First – Kaiya Kerrison
 12-Year-Old Boys: First – Marco Baylis
 13-Year-Old Girls: First – Anna Stevenson
 13-Year-Old Boys: First – Thomas Astwood
 14-Year-Old Boys: First – Quin Richardson-Kenndey
 15-Year-Old Boys: First – Jovial Jassowal; Second – Tangaroa Lewis; Third – Jack Stevenson
 Junior Boys' Swimmer of the Year: Deveshh Bali
 Junior Girls' Swimmer of the Year: Charlotte Kite
 Senior Boys' Swimmer of the Year: Jovial Jassowal
 Senior Girls' Swimmer of the Year: Anna Stevenson
 Most Improved Swimmer of the Year: Dylan Green
 Overall Points Winner for Swimmer of the Year: Charlotte Kite

Congratulations to all of our winners. We would also like to thank all of the volunteers who have helped out throughout the season, especially the instructors in our learn to swim programme: Debra, Michelle, Felicity, Ron, Karena, and Latisha and our swimming club coaches Debra, Michelle and Latisha. We look forward to seeing you all back next season.

Check out our Facebook (Coromandel Swimming Club) page for more details about events and results

Coromandel Recreational Fishing Club

By Allison Brown & Committee CRFC

Doesn't seem like much has been happening on the fishing front. I have not heard much about the fishing out there, have you? Please let us know.

Most unusual, no snapper were weighed in by Club members for May.

We went out Queen's Birthday weekend on the Sunday, which was a beautiful day, so we decided to stay overnight. Turned out to be a very cold night after the nice weather that we had been enjoying and Monday was not much better with squally showers, however we caught some nice snapper and our grandson hooked up with a large kingi which had been swimming around just taking burley. Then they decided to put a nice long orange lure on his line (which had been hanging in the boat as an ornament never been used). It was taken the moment it hit the water of course it took off. He tried to reel it in (hindsight a proper rod and reel should have been used), but it managed to go around the anchor chain and brake off.

All the fish that we caught were in close and some nice ones at No Fish Farm in the Harbour.

I was told by a fisherman that he had caught the biggest John Dory he had seen on that weekend so here's hoping that there are more of them out there this month as our club fish of the month is John Dory.

Here's to tight lines and hope you can get some fishing in over the coming winter months.

Our next event is the AGM on **Sunday 16 July** at 1.30pm at The Admirals Arms. Please circle this date on your calendar. We had a very good AGM last year so would really appreciate your continuing support this year to keep the Club going as all the competitions and Xmas Party have been a good success and enjoyed by all.

Anyone wishing to join the Club are most welcome as the next year goes from **1 July 2017 to 30 June 2018**.

Coromandel Croquet Club

By Kaye Anderson

Did you know...

- According to Pippa Middleton the game of croquet is "a test of strategy, skill, and tactics – or just an excuse to drink Pimm's and flirt."
- Lewis Carroll adored the game and in Alice in Wonderland, he created an anarchic version in which a hedgehog was used as the ball and a flamingo as the mallet, while playing cards doubled over were used as the hoops.
- In the Oscar-nominated 2014 film The Theory of Everything, Cambridge physicist Stephen Hawking is portrayed as a croquet enthusiast.

The above information was sourced from an article written by Pippa Middleton for Vanity Fair, June 2015.

We in Coromandel don't do the Pimm's and I have yet to observe any flirting going on during or after play. We do adore the game though, and so far pukekos have escaped being used as either balls or mallets. It's rather pleasing to note that such a brilliant academic as Stephen Hawking appreciated the game.

If you'd like to join us, we play on Tuesdays and Saturdays, meeting at 9.45am for a 10am start. For more information you can phone Kaye on (07) 866 8968. The Croquet Club is in Woollams Avenue next to the Bowling Club



GaiaDecorators
 PAINTING HOMES
 ACROSS THE COROMANDEL LIMITED

The Professional Finish For Every Building

Painting • Specialist Finishes • Wallcovering • Feature Walls • Maintenance

Mark Gaia 021 295 5532 | 07 866 7485
 COROMANDEL | gaiadecorators@gmail.com
 www.gaiadecorators.co.nz

Residential
 Commercial
 Free Quotes

Chartered Accountants The Hauraki Taxation Service Limited

Full-time Accountants in
 Coromandel Town since 1995.

Open Monday-Friday 9am-4pm

COROMANDEL 07 866 8660 THAMES 07 868 9710

Coromandel Golf Club

By Peter Gray

The Coromandel Ladies continue on their winning ways, with another win, this time in the Zone Match Play defeating Hauraki at Pauanui on 20 May.

Could have been an expensive day out for one team member after she left her wallet on the bonnet of the car – luckily golfers are more honest “off” the course than “on” the course and the wallet was retrieved.

The Men’s program has been interrupted by the wet month, however the Beaver Cup was decided with Mark Burcombe defeating Allan Rose.



The May Meat Pack/Laurie Olliff Trophy was won by Tom (Boxwell, Meanswell), Folwell with a score of 44pts from Mark Burcombe 40, followed by George Campbell, Ross Mudgway, and Peter Richardson 39pts.

The President’s Cup was played on Saturday 3 June and President Ed Buckettt had “Much Pleasure” in presenting his sponsored trophy to Glenise Robertson who won the day, with 39pts, followed by another lady member Eugene Weimer 38 from Jim Davis 37 and Allan Rose 36.

The Open Tournament run by the Ladies was a great success and well supported by the locals, however, the weather put a dampener on visiting golfers.

Club Members wish to extend their support for Club Captain Jim Davis, and his recent mishap with the “bus”. However – interesting insurance claim 15 drivers, 18 putters, 13 wedges... Also Jim lost his latest script for his next play, an adaption of the book “The Girl Who Played with Fire” if anyone has a spare.

While on the subject of Jim – Jim was seen coming out of the medical centre with three golf clubs. The question was asked if Jim needed medical advice or the clubs, or they had done a contra deal, medical advice for golf tips. However, Tom Folwell claims that the clubs were extracted from a certain part of Jim’s anatomy after Jim made some derogatory remarks about Tom’s score of 44pts to win the May Meat Pack.

GEE – Ron Brooking must be playing some “brilliant golf” since returning from his Aussie trip – seems to have a permanent smile on his dial.

July Reminder

Saturday 1 July – Neilson Cup Rd 2 – (Best 2 of 3 Rds Stableford)

Saturday 15 July – Neilson Cup Rd 3

Wednesday 26 July – Meat Pack, Laurie Olliff Trophy

Saturday 29 July – Captain’s Trophy

CAS sports

By Geoff Horton, CAS sports coordinator

The Coromandel Area School cross-country was brought forward this year to make sure the top finishers of each age group were eligible to compete at the Thames Valley Secondary School event held two weeks later. Four students travelled to Te Aroha, with Brooke Teklenburg completing her event in 8th place, gaining valuable insight into competition at the top end of Thames Valley school sport.

The Central North Island Area School coaching clinic and team trials was held at Te Awamutu earlier in the school term with Brooke and Shania Teklenburg trialling for the Central North Island netball squads to head to NZ Area School nationals early July in Whangarei. CAS sports coordinator Geoff Horton coached the Central North Island girls’ football squad in preparation for the same tournament, with the goal to establish NZ Area School eligibility to NZ Secondary School Sports tournaments 2018. The aim to create pathways for high sport performance in Area Schools has become a primary objective to support sport development initiatives and the growing student talent pool at Coromandel Area School.

Participation rates in school representative school sport is still being hampered by a lack of confidence but it is the girls who are showing the way. After a successful touch rugby season, female students in the 12-strong netball squad competing at Whitianga, are coming together nicely under the guidance of coach Emma Blake. Seventeen girls headed off to Paeroa for the girls’ rugby day, where coaching sessions were held on all aspects of women playing rugby. Two Black Ferns were on hand as ambassadors and the girls had a fantastic day learning aspects of the game.

It is gratifying to see students transitioning into community and club sport, demonstrating a growing confidence to experience sport outside of the school environment, with volleyball and badminton the main beneficiaries at present. Over time, it is envisaged a buoyant community sport environment will enable the development of talent in the Coromandel area through quality sports programmes across a spectrum of sport codes.

Contact Geoff Horton 021 054 1193



COROMANDEL.N.Z

866 8635

See meeting list for class times

Good fishing on Mussel Farms

The industry requests that all boaties taking advantage of better fishing inside Coromandel Mussel farms, please:

- Tie up to the farm and never anchor
- Do not run over any farm structures or ropes
- Do not tie up to and move off any line being worked by a farm vessel
- Always discharge any sewage more than 500m away from the farm



Classifieds

Classifieds cost 30 cents per word – please email your words to corochronicle@gmail.com and I will give you my bank details to direct credit. Or call Debbie on 021 235 6648.

PROFESSIONALS

ALL ASPECTS OF TREE WORK done professionally. Coromandel based Dynamic Tree Care. Call today 027 451 2224 or (07) 866 8177.

BEGINNER YOGA WITH BECKS

Tuesdays at the Anglican Church Hall, 170 Tiki Rd, from 5.30pm to 6.45pm, \$10. All are welcome and equipment is provided. Phone 027 407 0079 for more information.

BROKEN GLASS? Call Mike Coromandel Glass (07) 866 8869.

CABINETMAKER specialising in high quality kitchen design and build. Full workshop set up available here in Coromandel now. For a quote or ideas please call Stefan on 027 7594887 or (07) 866 7787.

CAROLYN'S CLOTHING AND HABERDASHERY: For all your alterations and repairs. Ph (07) 866 7865

CARPENTER WANTING WORK. Alternations, new houses, additions, no job too small, licensed building practitioner. Ph 021 675 575.

COMPUTER FIX. Your local support and expert for computer repairs, upgrades, backup solutions, virus removal, software problems, purchase advice or tuition. Micha Wellnitz, ph (07) 866 8932.

COMPUTER SOLUTIONS. Microsoft Certified Systems Engineer with over 15 years of IT experience providing solutions and support service for PCs, Laptops, Printers, Wired and Wireless Networks, Virus and Spyware removal, Data Protection and Recovery. Up gradations, Consulting, Design and Training. Contact: Dheeraj Bali Ph (07) 866 7550 Mob 021 207 1341 E-mail: dbali@vodafone.co.nz

COROMANDEL CATTERY & KENNELS (07) 866 8117, 027 433 1665.

COROMANDEL PICTURE FRAMER 30 years' experience in all aspects of framing with an excellent eye for colour and detail. Please call me for an obligation-free consultation. Servicing the Coromandel Peninsula. Ph Michelle 021 132 2890.

GOT ROSES? I will prune (available June only). Experienced & qualified with Refs. Contact Tina for a free quote ph or txt 021 186 6229.

HIRE EQUIPMENT available at Rob's Small Motor Repairs: log splitter, ride-on mower, push mower, large weedeater, rotary hoe, waterblaster. Call Rob's Small Motor Repairs (07) 866 7865.

HOME AND BUILDING MAINTENANCE. Qualified Joiner. Contact Tony Burton 021 337 484.

LAWNMOWER SERVICE AND REPAIRS:

And all the parts for your DIY's. Wanting to change your car oil? We now have oil and filters. Call Rob's Small Motor Repairs (07) 866 7865

NAILED@SHEPSPLACE Gel Polish & Nail Art Specialist Phone or Txt for Appointment 022 432 4519.

PENINSULA MIDWIVES. Experienced Midwives Available. Fiona Kingston 021 743 717 or (07) 866 0413, Jocelyn Yates 027 912 4104. Free pregnancy tests.

PIG HUNTERS. I can bone and roll your pork or mutton. Plain or seasoned \$30. Ph 021 0261 7945.

RANCH SLIDER WON'T SLIDE? Call Mike Coromandel Glass (07) 866 8869.

SEWING & MENDING SERVICES, Lynda at Little Stella Design (blue house next to Museum). I also make design cushions, soft home furnishings made to order, and I do cushion and squab recovering, curtain alterations etc. Telephone (07) 866 7855 & 027 227 5077.

STUMP GRINDING, no stump too big, satisfaction guaranteed, call James at Stumpaway on 021 0223 7742.

STUMPGRINDING - Machine assisted stump removal, all sizes all areas. Ph 027 472 6627.

TINA'S MASSAGE TREATMENTS, Yoga & Body Balance & Kids Creative Dance Classes will be back from September. Some spaces still available until 5 July, call 021 20 19 750. Stay safe and keep warm!

WINDOW CATCH BROKEN? Call Mike Coromandel Glass (07) 866 8869.

FOR SALE

FORD FALCON/FAIRMONT x2 97 and 98 both have wof and reg gd tyres and new batteries, alloy wheels \$3500 and \$2000 ono ph (07) 866 8869.

HAY FOR SALE. \$10 per bale. Phone Kim 021 533 174.

RIMU TALL BOY, some bora on back \$175 ono 021 122 9587.

TO RENT

THE HERBAL DISPENSARY, small (10m²) but charming, \$140 incl power, mezzanine bed, outside toilet, nr Driving Creek Cafe, suit 1 person, drugs-free, ph Naomi (07) 866 7337.

SITUATIONS VACANT

POSITION 12HRS P/T Community Worker Colville Social Service Collective. Purpose: To enable a range of services and opportunities to ensure the continued wellbeing/hauora of the upper northern Coromandel communities. Knowledge/skills: knowledge of the wider Colville community; knowledge of and/or experience in community work and/or social services; successful leadership experience; computer skills, including Microsoft Word, MAC, emails, internet & publishing tools; experience with parenting and youth an advantage. Applications close 10 July 2017. Pick up a job description at CSSC or email cssc@colville.org.nz or phone (07) 866 6920 or www.cssc.net.nz

WANTED

CASH PAID FOR YOUR UNUSED OR UNWANTED CHAINSAWS. Call in and see Rob at Rob's Small Motor Repairs or phone 021 618 601.

SCOUT MEMORABILIA If you have any Scout patches, badges, uniforms (pref. pre-1980) or Scout blankets, then I would love to add them to our collection. I'm a Scout Leader and collector of Scout memorabilia. Please phone or txt Matt on 027 722 2548 if you can help.

WANTED ALL LIVESTOCK. We inspect in the paddock. Also we transport every Thursday to Waikato's largest saleyards in Morrinsville. Phone Dave Coatsworth 0274 817 100.

WORK WANTED

"FOR TREES" PETER NOVIS, climbing specialist, felling, topping, pruning, chipping and wood splitting. Fully insured. Phone (07) 866 7128, 027 636 3253.

DYNAMIC TREE CARE - Council approved professional local arborist service for all Tree Work. Fully Qualified, Equipped & Insured. Health & Safety compliant. Free quotes. Jobs large or small. Call now (07) 866 8177 or 027 451 222.

PAINTER AND DECORATOR, competitive rates. Ph 022 624 9380.

STUMP GRINDING, no stump too big, satisfaction guaranteed, call James at Stumpaway on 021 0223 7742.

STUMPGRINDING - Machine assisted stump removal, all sizes all areas. Ph 027 472 6627.

TREE SERVICE. Dismantling or pruning. Free quotes. Call Jeremy Haszard 027 421 0603.

VINYL LAYING domestic/commercial 027 350 9242.

PUBLIC NOTICES

UPPER COROMANDEL FOREST & BIRD ANNUAL GENERAL MEETING at Elizabeth Park Village Hall, Allman Drive, 11am Sunday 2 July, shared lunch. Speaker: Allan Saunders, all welcome.

Paraprosdokian

Paraprosdokian are figures of speech in which the latter part of a sentence or phrase is surprising or unexpected; frequently humorous. Winston Churchill loved them.

1. Where there's a will, I want to be in it.
2. The last thing I want to do is hurt you, but it's still on my list.
3. Since light travels faster than sound, some people appear bright until you hear them speak.
4. If I agreed with you, we'd both be wrong.
5. We never really grow up; we only learn how to act in public.
6. War does not determine who is right - only who is left.
7. Knowledge is knowing a tomato is a fruit; wisdom is not putting it in a fruit salad.
8. To steal ideas from one person is plagiarism; to steal from many is research.
9. I didn't say it was your fault; I said I was blaming you.
10. In filling out an application, where it says, "In case of emergency, notify:" I put "DOCTOR".
11. Women will never be equal to men until they can walk down the street with a bald head and a beer gut, and still think they are sexy.
12. You do not need a parachute to skydive; you only need a parachute to skydive twice.
13. I used to be indecisive, but now I'm not so sure.
14. To be sure of hitting the target, shoot first and call whatever you hit the target.
15. Going to church doesn't make you a Christian any more than standing in a garage makes you a car.
16. You're never too old to learn something stupid.
17. I'm supposed to respect my elders, but it's getting harder and harder for me to find one now.

Advertisers' directory

Company	page
360 Discovery Ltd	24
Admirals Arms	21
Ann Kerr-Bell – Natural Medical Centre	10
Coastal Small Engine Services	13
Coro Gym	31
Coromandel Accommodation	12
Coromandel Business Association – info centre	15
Coromandel Construction	28
Coromandel Garage Ltd	22
Coromandel Liquor	4
Coromandel Marine Engineering	6
Coromandel Marine Farmers' Association	31
Coromandel Players – 40 years	29
Coromandel Plumbing (1986) Ltd	27
Coromandel Quarry Ltd	27
Coromandel Refrigeration	36
Driving Creek Cafe	24
Driving Creek Railway	16
Dynamic Tree Care	23
Fish n Dive	10
Fisher & Paykel Appliances Ltd	20
Gaia Decorators	30
Harcourts	18-19
James and Turner	6
James Drainage '97 Ltd	21
Lion Liquor – LK Coromandel	2
Llandem Consulting Engineers Ltd	15
Lynley Ogilvie – massage therapist	12
Mana	26
Papa Aroha Engineering	20
Peninsula Electrical Services Ltd	14
Pepper Tree Restaurant & Bar	14
Purnell Jenkison Oliver	7
Richardsons Real Estate	8-9
Rob's Small Motor Repairs	16
Scott Revell Building Contractor	27
Scott Simpson MP	5
Steelcraft Ltd	28
Tangiaro Kiwi Retreat	17
TCDC	11
Te Korowai Hauora o Hauraki	5
The Hauraki Taxation Service Ltd	30
Trinity Network	35
Waitaia Nursery	17

Coromandel Town weekly and monthly meetings

Every Monday

Coromandel Hikers' Group, Hauraki House,
Colin & Elspeth (07) 866 71379am
Monday Walkers, Irene 021 157 84089am
Four-part harmony singing, Sue (07) 866 88337.30pm

Every Tuesday

Pastel Artists Coromandel,
Coromandel Aero Club Rooms (07) 866 7220 ...9am-midday
Coro Walking Group, Ruth (07) 866 72469am
Croquet, Woollams Ave, Kaye (07) 866 89689.45am
Beginner Yoga with Becks, at the Anglican Church Hall,
170 Tiki Rd, \$10. Contact 027 407 00795.30-6.45pm
Coro Motorcycle Club, Star & Garter,
John 027 234 10137-9pm

Every Wednesday

Every Thursday

Coro Walking Group, Ruth (07) 866 72469am
Coro Art Group, St Andrew's Church Hall,
Val (07) 866 89119am-12pm

Fortnightly Thursday

Open Floor Dance Classes (fortnightly — 13, 27 July)
Anglican Church Hall, \$10, music starts 6.45pm. Jacqui 022
392 8588 or Lisa 021 175 47416.45pm

Every Friday

Every Saturday

Croquet, Woollams Ave, Kaye (07) 866 89689.45am

Every Sunday

Monthly

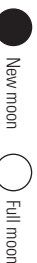
1st Mon – Coro Patchwork & Quilters, Ambulance rooms,
Jill (07) 866 74849.30am-3.30pm

3rd Mon – Coro Patchwork & Quilters, Ambulance rooms,
Jill (07) 866 74849.30am-3.30pm

I have cleared this section (and will do it every winter) to make sure it is kept correct. If your meeting has been missed out, please email Debbie at corochronicle@gmail.com with the subject "meeting", or txt/ph 021 235 6648, or post details to PO Box 148, Coromandel 3543. Please include contact name and phone number.

MON	TUE	WED	THU	FRI	SAT	SUN
3	4	5	6	7	8	9
High tide 2.12am (2.6m), 2.47pm (2.5m) Low tide 8.29am (0.7m), 8.53pm (0.8m)	High tide 3.04am (2.5m), 3.43pm (2.5m) Low tide 9.22am (0.7m), 9.48pm (0.8m)	High tide 3.55am (2.5m), 4.36pm (2.5m) Low tide 10.14am (0.7m), 10.38pm (0.8m)	High tide 4.45am (2.5m), 5.26pm (2.5m) Low tide 11.03am (0.7m), 11.25pm (0.8m)	High tide 5.34am (2.5m), 6.12pm (2.6m) Low tide 11.49am (0.7m)	High tide 12.27am (2.9m), 12.56pm (2.7m) Low tide 6.42am (0.5m), 6.59pm (0.6m)	High tide 1.19am (2.7m), 1.50pm (2.6m) Low tide 7.36am (0.6m), 7.56pm (0.7m)
10	11	12	13	14	15	16
MEG Winter lecture – Impacts of creating an urban sanctuary 7pm at Pepper Tree (see pg 26)		Quiz night at The Club (see pg 10)	Open Floor Dance Classes (see pg 6)		Neilson Cup Rd 3 at Coromandel Golf Club (see pg 31) Coromandel Peninsula Art & Craft Fair, Whitianga (see pg 28)	Coromandel Recreational Fishing Club AGM (see pg 30)
High tide 7.47am (2.6m), 8.15pm (2.7m) Low tide 1.33am (0.7m), 1.52pm (0.5m)	High tide 8.28am (2.6m), 8.54pm (2.8m) Low tide 2.14am (0.6m), 2.30pm (0.5m)	High tide 9.08am (2.6m), 9.33pm (2.8m) Low tide 2.55am (0.6m), 3.09pm (0.5m)	High tide 9.48am (2.6m), 10.14pm (2.8m) Low tide 3.37am (0.6m), 3.49pm (0.5m)	High tide 10.30am (2.6m), 10.57pm (2.8m) Low tide 4.20am (0.5m), 4.30pm (0.5m)	High tide 11.14am (2.6m), 11.43pm (2.7m) Low tide 5.04am (0.5m), 5.16pm (0.6m)	High tide 12.01pm (2.6m) Low tide 5.51am (0.5m), 6.05pm (0.6m)
17	18	19	20	21	22	23
CHRONICLE DEADLINE – August issue content – 4pm		Movie night at The Club (see pg 10)				
High tide 12.31am (2.7m), 12.53pm (2.6m) Low tide 6.42am (0.5m), 7.01pm (0.6m)	High tide 1.24am (2.7m), 1.51pm (2.6m) Low tide 7.36am (0.5m), 8.02pm (0.7m)	High tide 2.20am (2.7m), 2.54pm (2.6m) Low tide 8.35am (0.5m), 9.06pm (0.6m)	High tide 3.20am (2.7m), 3.58pm (2.7m) Low tide 9.36am (0.4m), 10.08pm (0.5m)	High tide 4.22am (2.8m), 5.01pm (2.9m) Low tide 10.37am (0.3m), 11.08pm (0.4m)	High tide 5.24am (2.9m), 5.59pm (3.0m) Low tide 11.36am (0.2m)	High tide 6.24am (2.9m), 6.55pm (3.1m) Low tide 12.06am (0.3m), 12.32pm (0.1m)
24	25	26	27	28	29	30
Start of school term 3		Meat Pack, Laurie Oliff Trophy at Coromandel Golf Club (see pg 31) Quiz night at The Club (see pg 10)	Open Floor Dance Classes (see pg 6)	Artists' Friday (see pg 28)	Captain's Trophy at Coromandel Golf Club (see pg 31)	
High tide 7.21am (3.0m), 7.48pm (3.2m) Low tide 1.02am (0.3m), 1.26pm (0.0m)	High tide 8.15am (3.0m), 8.39pm (3.2m) Low tide 1.36am (0.2m), 2.17pm (0.0m)	High tide 9.07am (3.0m), 9.29pm (3.1m) Low tide 2.48am (0.2m), 3.06pm (0.1m)	High tide 9.56am (3.0m), 10.18pm (3.1m) Low tide 3.40am (0.2m), 3.55pm (0.2m)	High tide 10.45am (2.9m), 11.07pm (2.9m) Low tide 4.29am (0.3m), 4.43pm (0.3m)	High tide 11.33am (2.8m), 11.55pm (2.8m) Low tide 5.18am (0.4m), 5.32pm (0.5m)	High tide 12.22pm (2.6m) Low tide 5.06am (0.5m), 6.23pm (0.6m)
31						

KEY



Tide times and heights from Land Information NZ and are for Coromandel Harbour.
For Thames times - 15min High and - 18min Low.

COROMANDEL

RUBBISH & RECYCLE TRANSFER STATION & E-CYCLE HOURS
Tuesday and Thursday 11am-4.30pm
Saturday and Sunday 11am-5.30pm

Make sure your event gets listed

To get your event listed, email the details, your name and contact phone number to Debbie at corochronicle@gmail.com with the subject “event”. Or post to Jude Publishing, PO Box 148, Coromandel. There is limited space available and will be published subject to space availability, with preference to not-for-profit groups.

August events

- 4 & 5 – Coromandel Players Celebrate 40 Years (see ad pg 29)
- 18 – Well Being and Happiness Lab starts (see pg 20)
- 25 – Annual Daffodil Day Appeal (see pg 14)



We have even more
properties for sale online!

View online www.trinitynetwork.co.nz/properties/



TRINITY
NETWORK
REAL ESTATE

Trinity Network Ltd (100% owned) (NZ) Ltd



Coromandel, 1110 Rings Road
www.trinitynetwork.co.nz/136091/



Coromandel, 13 Puriri Road
www.trinitynetwork.co.nz/136106/



Coromandel, 1999 Wyuna Bay Rd
www.trinitynetwork.co.nz/136094/



Coromandel, 54 Little Bay Drive
www.trinitynetwork.co.nz/136092/



Coromandel, 21b Colville Road
www.trinitynetwork.co.nz/136185/



Te Kouma Cottages
www.trinitynetwork.co.nz/136152/



Coromandel, 126 Te Tiki Street
www.trinitynetwork.co.nz/136182/



Coromandel, 1616B Manaia Rd
www.trinitynetwork.co.nz/136146/



Coromandel, 105 Wharf Road
www.trinitynetwork.co.nz/136085/

More Savings

House Value	Higher Commission Rate Example	Our Commission	Savings
\$400,000	\$16,428	\$13,225	\$3,203
\$600,000	\$21,100	\$15,525	\$5,575
\$1,000,000	\$30,228	\$20,125	\$10,103

Trinity Network Commission is \$7500 + 1% of the sale price + gst

Higher Commission Rate Example is based on 3.95% on first \$300,000 of sale price + 2% of balance of sale price + a \$500 fee + GST. Higher Commission Example is not based on any particular agency, average or standard charge made by other companies. Actual rates will vary between companies, branches and agents. The commission table and Higher Rate example are provided to help assess potential savings only. Trinity Network does not accept responsibility or liability if actual savings vary from the examples given. For more information please contact admin@trinitynetwork.co.nz.



More Services



Better Technology



Team Rob & John

Honesty-Integrity-Commitment-Results

Rob Keatley

Real Estate Specialist

0275 777 424

rob.keitley@trinitynetwork.co.nz

John McCaughan

Real Estate Specialist

021 212 4423

john.mccaughan@trinitynetwork.co.nz



The Full Real Estate Service | 0508 777 333 | trinitynetwork.co.nz

COROMANDEL REFRIGERATION & HEAT

Keep Warm This Winter With A Local Heat Pump Solution

Introducing the new Mitsubishi GL High Efficient High Wall Heat Pumps. The EcoCore High Wall Heat Pump Range sets a new standard in super energy efficient heating. Next generation Technology is designed to use less power than ever before. Unrivalled for quietness, they are ideal where it matters the most – in living rooms and bedrooms!



MITSUBISHI ELECTRIC



R32 GL25 High Wall Heat Pump

Small Room System MSZ-GL25VGD

Our GL25 High Wall Heat Pump is ideal for the bedroom, with the Energy Star Mark reflecting exceptional energy efficient heating and cooling comfort and unbeatable whisper quiet operation.

Heating 3.2 (1.3-5.0) kW

Cooling 2.5 (1.1-3.6) kW

\$1888 Incl GST Get It Installed From **\$399** Incl GST



Optional Wifi Controller

\$299 Incl GST

Manage your Mitsubishi Heat Pump Via your Smart Phone or Tablet, no matter where you are.



R32 GL50 High Wall Heat Pump

Medium Room System MSZ-GL50VGD

Our GL50 High Wall Heat Pump is ideal for the Living Room, with next Generation High Efficiency Compressor Technology this system is engineered specifically to use less power than ever before.

Heating 5.8 (1.6-8.0) kW

Cooling 4.8 (1.5-6.2) kW

\$2593 Incl GST Get It Installed From **\$499** Incl GST



Mitsubishi Micro-Inverter Solar Packages
From **\$4995** Incl GST



R32 GL71 High Wall Heat Pump

Large Room System MSZ-GL71VGD

Our GL71 High Wall Heat Pump is ideal for the Open Plan Living or an older home with high ceilings. With long and wide air flow, it provides powerful heating to every corner of the room.

Heating 8.0 (2.2-9.9) kW

Cooling 7.1 (2.4-8.7) kW

\$3539 Incl GST Get It Installed From **\$499** Incl GST



435 Kapanga Rd, Coromandel

07 866 8463

*Conditions apply see in store for details. A free no obligation onsite quotation is available for any of the above packages. Heat pump installation prices based strictly on back to back installations. Coromandel Refrigeration works in conjunction with Perfect Air and can provide these services Coromandel & North Waikato wide. Offers available while stocks last or until August 8th 2017 PROUDLY SUPPORTING THE WESTPAC RESCUE HELICOPTER IN 2017

