

July 2019
Volume 23 Issue 7

Coromandel Town Chronicle

Founded and owned by the Coromandel Business Association since 1996

FREE
Community Magazine

PAINTING BY LINDA SAMPSON

Ask Where I'm Local

SEE PAGE 4

Beach litter monitoring PG 7



Community spirit honoured PG 16



Donations to helicopter PG 20



JAMES & TURNER

KITCHENWARE · PAINT

HARDWARE · GIFTWARE

FISHING · CAMPING

MARINE · GARDENING

PLUMBING · ELECTRICAL

James & Turner 2014 Ltd
131 Kapanga Road
P.O. Box 16
Coromandel Town

Grant Webber
Ph: 07 866 8805
info@jamesandturner.co.nz
f search "James & Turner"

\$15 RIBS & BURGERS



\$15 JUGS OF BEER **\$20 JUGS OF CIDER**

**DINE IN AND TAKE AWAY
ALL DAY WEDNESDAY**


**STAR & GARTER
HOTEL**
Coromandel Town

CONDITIONS APPLY

 **Tangiaro Lodge**
Gem of the Northern Coromandel

Romantic Winter Getaway for two
Secluded, tranquil and very romantic...

Package includes:
2 nights accommodation for 2 adults
Standard Chalet: \$390 or Deluxe Chalet: \$490
\$100 restaurant voucher
(excludes all drinks)
Outdoor Spa Pools Free Wi-fi 11am check out

This offer cannot be used in conjunction with any other promotion or special offer at Tangiaro. Offer subject to availability
Rates valid from 1 May 2019 to 31 August 2019

Indulge Yourself
Add a Therapeutic Massage (Bookings essential)
Jan - 021 268 6198 or info@relaxcoro.co.nz

1299 Port Charles Road, Coromandel
www.kiwiretreat.co.nz info@kiwiretreat.co.nz
(07) 866 6614

\$10 ENTRY FEE **DART'S NIGHT**
Saturday 29 June @ 5.15pm
Proudly sponsored by **Stony Bay Craft Beer**

FLOORING XTRA

**Free underlay
on selected Cavalier
Bremworth carpet**

**Free underlay
on selected Quickstep
laminare flooring**

Terms and Conditions apply.
Offer ends 31st July 2019.

ON ALL FLOORS FLOORING XTRA,
90 KOPU ROAD, THAMES 07 868 7608
thames@flooringxtra.co.nz

FAGANS FLOORING XTRA,
68 ALBERT STREET, WHITIANGA 07 866 2836
whitianga@flooringxtra.co.nz

Coromandel Town Chronicle

Cover picture: Painting by Linda Sampson

The *Coromandel Town Chronicle* is published by Jude Publishing Ltd on behalf of the Coromandel Business Association. It is delivered free to the Coromandel area.

Jude Publishing Ltd
PO Box 148, Coromandel 3543
www.coromandeltownchronicle.co.nz

For advertising please email Debbie on
corochronicle@gmail.com
or phone 021 235 6648

If you have any news stories that you'd like included please email corochronicle@gmail.com or post to PO Box as above.

If you are not sure how to put an article together for publication then find tips and advice on the website: www.coromandeltownchronicle.co.nz/html/guidelines.html

The Coromandel Town Chronicle is printed with vegetable oil based inks by Print House Ltd, Hamilton. An accredited FSC and PEFC printer.

Coromandel Business Association's Mission Statement: To support business, partnering with our community board, to strengthen and encourage the development of Coromandel Town and environs.

Want to support the CTC?
Live out of town? You need an annual subscription.
\$48 (incl. GST) NZ postage only.
See contact details above.

Deadline for the next issue is 4pm Monday 15 July

Disclaimer: The publisher and its editors of the *Coromandel Town Chronicle* shall not be responsible in any way for opinions expressed in letters and articles contained in the *Coromandel Town Chronicle* or for loss or damage suffered by anyone in reliance upon the information contained therein. Further, no endorsement of any product or service featured or advertised in the *Coromandel Town Chronicle* should be implied or assumed.

Coromandel Business Association Disclaimer: The opinions of the editor do not necessarily reflect the opinion of the Coromandel Business Association. The Chronicle should be representing all parties and showing a cross section of feedback from the community and we believe this to be the case. The editor of any publication is entitled to a personal opinion and provided this is identified as such then this is acceptable to us.

ISSN 1178-721X (Print)
ISSN 1179-4895 (Online)

Editor's comment

Oops, I just realised that I have been labelling 2019 as "volume 24" on the cover when it should be "volume 23". So I've skipped a whole year! Have corrected for this issue.

I have had to put my prices up on subscriptions due to NZ Post increasing postage rates again. However, for your convenience you can find a free PDF of each issue on www.coromandeltownchronicle.co.nz.

Simon from Te Rerenga School has written a nice description of what it is like living in Coromandel Town from a child's perspective, which I have printed below.

I'll be doing the July issue from England so bear with me on responses to my email and messages.

Debbie

Coromandel Business Association policy:

The purpose of the Coromandel Town Chronicle is to showcase the region and its people. The Coromandel Town Chronicle is open for everyone to contribute, however the editor reserves the right to select the articles, advertisements and letters that are published in line with the Coromandel Town Chronicle's publication policy.

The Town

By Simon Wilson, Room 3, Te Rerenga School

Coromandel Town was usual enough; it had a playground, swimming pool, a beach, a creek, a church, a sky over it, and even a graveyard I never went to. My friends and I did what boys do – played on the playground, swam in the pool, ran around, played tiggy, rolled down the hill, raced, climbed trees, and jumped around. Doing nothing important.

Letters

Hi,

I am looking for details of The Crosby Bros who ran a butcher's shop in Coromandel Town back in 1897.

Also my grandparents were married in Coromandel Town on 14 June 1897 – John CROSBY and Catherine (Katie) FORD. Any information on Crosby or Ford would be a great help.

Any details please email me on buttercup@outdoorkiwi.co.nz.

Regards,

Barbara Morton, Kawerau

Dear Editor,

Re Mike Mann's letter. As an atheist and therefore impartial, but having done all of my schooling in Christian based schools, I have a small knowledge of biblical history.

The Anglican minister at the Anzac Service is correct. The god of Muslims and Christians, and for that matter the Jews, is the same god.

It all goes back to Abraham who, after his 80 year old wife, Sarah, gave birth to Isaac, drove his son Ishmael and his mother away. Ishmael fathered the Muslims and Abraham is regarded as father of the Jews. Jews and Islamists share many religious practices. Some aeons later Jesus Christ arrived and his followers became Christians. Christ was a Jew and worshipped the same god. Christians must accept that they don't have the monopoly on their god and try to practice tolerance and compassion, which is meant to be a Christian ethic. Being an atheist relieves a lot of religion driven stress. We can believe whatever we like and everyone else can do the same. Who knows the truth?

Yours sincerely,

Joanna Platt, Coromandel Town

Dear Editor,

We'd like to thank the people of Coromandel Town for creating a great community. We operated our tattoo studio on Kapanga Road for three-and-a-half years and have now relocated to Whitianga, to be in a bigger centre.

Thanks to everyone for the support and encouragement over that time. We will miss the all of the friendly Coromandel faces. And we can definitely say that Coromandel is a "small town with a big heart".

Nga mihi,

Lee and Tiffany, Evolution Tattoo Studio NZ, Whitianga

Send letters to the *Coromandel Town Chronicle*, PO Box 148, Coromandel 3543 or email to corochronicle@gmail.com. Contributions should be kept short, and should not exceed 350 words. They must include name, address and telephone number. The editor reserves the right to reject letters or edit them for clarity and space.

Ask Where I'm Local



By Debbie Morgan

I visited the Watch This Space "Ask Where I'm Local" exhibition at the end of May. It was really interesting and sparked my curiosity. I loved the painting by Linda Sampson, which I have featured on the front cover (and below) – because it includes all of the elements of what is local to her, and the poem (right) by Kaye Anderson for also covering the subject – this time with words. I hope you had the time to visit the exhibition and look out for the next Watch This Space exhibition of thought-provoking artwork from locals.



"On being Local"

By Kaye Anderson

Where I'm embraced
Where I'm recognised
Where I know the rituals
For meeting and greeting

A hug
(yellow ellipses)
Or a wave
(green triangles)
But all connected by burnt sienna

There are pathways too
In and out of the embrace
For people to come and go

Where I'm local
We take the rough with the smooth
Cyclones and earthquakes
With blue-gold, green-gold sunshine days

The backbone of trees and earth
The backdrop of sea and sky
Also define

Where I'm local

Eulogy for Nicky Johnston

Sadly, on Tuesday 4 June, Nicky Johnston passed away, a lady who contributed heart and soul to the youth of Coromandel for nearly 30 years while working at Youth Group.



Nicky worked tirelessly in the background, helping children and families get help that they needed.

Nicky also ran youth activities such as basketball and kapahaka. She instructed tap and modern dance classes and organised many bus trips to Auckland, taking children who couldn't otherwise go to Santa parades, ice skating, lazer tag, etc.

A new seat has been installed by Jack Little and friends at the Hauraki Reserve in gratitude for Nicky's contributions to the Coromandel Youth.

Eulogy by Huia (*altered slightly for readability*)
Firstly to you Puddy, sorry for the loss of your beautiful mummy Nicky, are you Puddy number 4?

To the cats near and far, take care, keep up the good job of warming that chair.

To you Barney Rubbles and to your daughter for your loss of a wonderful caring mum and nana.

And to you Mr TimTam, pull your socks up, and don't despair, you know Nicky, she will always remain near.

Geez Nicky, it's me the stray, only with two legs and needed a place to stay.

I hope it's warm up there or wherever you may be, cause it's frick'n cold and wet here.

Anyway, thank you for caring, the I.O.U. for the lolly tab at Youth Group, the memories of rolling over to Te Kouma in Manaia, walks with Puddy, and feeding them cats. Where did they even come from; you even gave them names I'm sure.

Staying up late, crock pot kai, cruising to Thames to do shopping and of course fur, fur and more fur, like get out of your car and you have an instant korowai of fur.

Thank you for being you.

Now I bet you already have your angel wings on, hovering around making sure nothing's going wrong.

Good on you Nicky, you have imprinted my heart with Whakapono, Tumanako, Aroha, the three baskets of knowledge.

I will always treasure my time with you and of course Puddy of the years 94, 95, 96...

Big loves to you...xoxo Huia.

New non-emergency police phone number

105 is a new dedicated 24/7 number for reporting non-emergencies such as damaged property, stolen vehicles or providing police information about crime in your area.

111 still remains the number to call for emergency situations.
Remember – if it is happening now, call 111. If it has already happened, use 105.

Thinking about a renovation
or new build and need some advice?

"Duncan is a very calm, reliable person. He gets on well with others and can see his way through problems or challenges."



coromandelconstruction.co.nz

duncan@coromandelconstruction.co.nz
(07)866-7796 021-173-7457

Jonathan Scott

INTERIOR - EXTERIOR
PAINTING

022 0500 963 | COROMANDEL BASED
jonakasha@gmail.com

"Nothing" sells for \$220 at Local Charity Auction

A well-attended charity event on Wednesday 15 May at the Admirals Arms Hotel in Coromandel Town saw \$7,200 being given to four charitable organisations. Representatives from St John Ambulance, Coromandel Rescue Helicopter, Coromandel Volunteer Fire Service and Coromandel Foodbank each received \$1,800.

Over several months food raffles supported by The Coromandel Meatkeeper, with packs at cost, and customers of the Admirals Arms generously buying tickets, saw some \$5,000 raised. To that was added over \$2,200 raised by means of a live auction conducted by well-known auctioneer, Chris Devereaux, who with partner Barbara Harris also happens to own the Admirals Arms. Chris is remembered for his regular appearances in the NZTV programme "Going, Going, Gone", selling fabulous items in his internationally recognised specialist field of jewellery, watches, objects of vertu* and Russian collectables.

Goods and services were generously donated by a wide variety of businesses in Coromandel. Bidding was particularly strong for some of the more unusual items, including 12 tons of gravel, and a surprise final lot. The last lot was a certificate stating that the buyer was entitled to absolutely nothing, other than the grateful thanks of the community. Bidding opened at \$50 and rose steadily amid much encouragement and hilarity to sell to a delighted lady for \$220.

*Vertu = valuable pieces of small size and great desirability.

Coromandel Business Association

By Pamela Grealey

We were very pleased to host the Coromandel Tech week event, in conjunction with CILT, Te Waka and TCDC, on 22 May. The event was held at the Anglican hall and was very well attended. We had local speakers Bob Drummond, Mike Noonan and Daniel Smith alongside representatives from Impact Hub, Te Waka and TCDC. The theme was how we can work locally but still be a part of the global economy.

A big thank you to all of our speakers and sponsors and a special shout out to the amazing volunteers who helped pull it all together. Look out for more tech based events alongside our business as usual.



Bob Drummond talks tech at Coromandel Town

COROMANDEL & AUCKLAND FERRY

TIMETABLE EFFECTIVE TO 27 OCTOBER 2019

Departs Auckland: Pier 4, Quay Street

	M	T	W	T	F	S	S
29 Apr - 2 Jun	-	-	-	-	-	8.45 am	8.45 am
3 Jun - 9 Jun	8.45 am	-	-	-	-	8.45 am	8.45 am
10 Jun - 30 Jun	-	-	-	-	-	8.45 am	8.45 am
1 Jul - 7 Jul	-	-	-	-	-	8.45 am	8.45 am
8 Jul - 20 Oct	-	-	-	-	-	8.45 am	8.45 am
21 Oct - 27 Oct	-	-	-	-	6:40pm	8.45 am	8.45 am

Departs Coromandel: Hannafords Wharf

	M	T	W	T	F	S	S
29 Apr - 2 Jun	-	-	-	-	-	4.30 pm	4.30 pm
3 Jun - 9 Jun	4.30 pm	-	-	-	-	4.30 pm	4.30 pm
10 Jun - 30 Jun	-	-	-	-	-	4.30 pm	4.30 pm
1 Jul - 7 Jul	-	-	-	-	-	4.30 pm	4.30 pm
8 Jul - 20 Oct	-	-	-	-	-	4.30 pm	4.30 pm
21 Oct - 27 Oct	-	-	-	-	8.45 pm	4.30 pm	4.30 pm

Auckland - Coromandel

	ADULT	CHILD	FAMILY
ONE WAY	\$64.00	\$42.00	\$191.00
RETURN	\$98.00	\$64.00	\$292.00

Child: 5-15 years inclusive. Family: 2 adults + 2 children.

Travel Information:

- A Sunday service operates on public holidays, except Christmas day.
- In the event of cancellations Fullers360 may arrange alternative transport arrangements.
- A ferry bus shuttle will transfer you to and from Coromandel Town (Samuel James Reserve car park) and Hannaford's Wharf. There is no additional fare for this service.
- Advance bookings are advisable for all Fullers360 tours and bookable ferry services. We recommend arriving 30 minutes prior to departure to check in.
- All departures and timetables are subject to change or cancellation due to weather or operational requirements. Prices in this brochure are correct at time of printing and inclusive of GST, and may change without notice. All travel on Fullers360 services and tours is subject to our full terms and conditions of travel, available online at fullers.co.nz.

Fullers 360
EXPERIENCES & CRUISES



SAVE TIME AND BOOK ONLINE!
fullers.co.nz | 09 367 9111

Grey Power Coromandel Association

By John Rabarts, President

Grey Power Committee

At our AGM in June we re-elected our officers – Irene Dunne (vice president), Carol Carson (membership), Dolly Welch (finance) Shirley Stol (minutes secretary), and John Rabarts as president. Committee members next month.

Spelling Lesson

Married 50 years the happy couple revealed their secret for wedded bliss. He: “never be selfish – there is no I in marriage” She: “Never correct your husband’s spelling!”

Pest Control

We started this pest debate about a year ago on ants. I thought that was exhausted and readers will have disposed of all of their ants. But perhaps not. A new suggestion is that “sugar” kills ants. Well I know that sugar attracts ants and now I think about it, if ants get into your sugar bag, you get a lot of dead ants, but still live ones as well. So this one needs testing. Put out some sugar, wait – the ants will arrive – and watch to see how many of the ants die in the sugar. Let’s hear how you go (I don’t have any ants left to test!).

Now away from the ants, but still on pests – here is the view from Frederick, as promised in our last Chronicle article:

“Isn’t it time we start looking at alternatives? As kiwis we are known as ‘out of the box’ thinking people. John Britten and Burt Munro are two examples. They totally didn’t follow the ‘rules’ and look what they did. We should start seeing our pests as a resource! Using what we call pests can take pressure off farming, reduce food miles and help the local economy! Once we start looking after our neighbours, who we will depend on in times of need, we will make progress again. Possums have awesome fur, skin and the meat is good too, either for dog food or human consumption. Same goes for the goats and pigs in the forest. We have to teach ourselves and our children (and grandchildren) again to work more local and think global. Keep it local and look after our local resources – help one another. You cannot poison the forest back to life.”

Thanks for this contribution. I have promised Frederick we will meet and discuss some practical aspects of his views, so look for more next Chronicle. I am sure we are all aware that there is extensive trapping on the northern peninsula of possums, stoats, rats, weasels, hedgehogs, ferrets, even cats in some areas. But are we doing enough? And are we using the resources of caught pests to further use, as Frederick is suggesting above? I don’t think so. I know a few people (include me in this) who put (dead) possums in the hole when planting fruit trees. Some fur is being harvested and others feed dogs with fresh possum meat. But beware of feeding dogs with possum when poison is out. Possum and rat killing poisons kill dogs and pigs when they eat the poisoned animals.

Coromandel Grey Power members get a newsletter and notice of our regular Grey Power meetings (next meeting August). Enquiries to join please contact Membership Secretary, Carol Carson on (07) 866 7172. Or text John Rabarts on 022 611 5717. My cell phone doesn’t receive voice calls where I live and I can’t access left messages. But text messages do get through, although sometimes delayed. Have a nice day, hope you get enough rain to water the garden, but not enough to wet the washing on the line. Um, yeah – right



Coromandel Steiner Community Group

The Coromandel Steiner Community Group had a great initial public meeting on 10 June. Thank you to everyone who attended. Amongst other things we discussed ideas for the monthly Steiner community group and playgroup, and the petition we’ve created to

keep community-raised Steiner funds in Coromandel.

Our initial celebration will be a Matariki/Winter Festival. Everyone is welcome. Matariki Winter Festival at Havalona Pyramid **Sunday 7 July 4pm**. All ages. Bring a lantern (if you have one) or a candle and a candle-holder. Please park on Driving Creek Road to keep the carpark area safe for the little ones.

The Playgroup has started and is welcoming new children and parents.

Our venue is the Presbyterian Church hall, 1426 Rings Road, Mondays 9.30am-12.30pm. Please bring a piece of fruit and \$5 or more koha.

The playgroup is looking for donations of resources: wooden toys (eg blocks, trolleys, rocking horses), Waldorf dolls, basic musical instruments (eg maracas or glockenspiels), natural objects (such as shells), wooden children’s furniture, natural woven baskets (small or large), cotton or natural fibre fabric, floor rugs, cushions, large plastic storage containers, childrens books. Please spread the word. Donations can be received during playgroup time (see above).

For the Steiner Community Group we are also dreaming up fun activities for the coming months. Ideas include flax weaving, needle felting, doll making, dyeing, seed harvesting, making wooden toys, candle making, macramé and soap making. If you have some of these skills (or resources) that you’d like to share with the community, please get in touch.

At the meeting we also discussed the important issue of how to keep the funds from the old kindergarten in Coromandel, and how to raise more widespread public support for this cause.

According to the Charities Commission website the Steiner Kindergarten Trust has over \$300,000. This is over \$300,000 of local-raised money that will be given to other areas, unless we as a community can stop this. We believe this needs to be public knowledge. If you haven’t signed the petition yet go to Change.org (search for “Keep community-raised Steiner funds in Coromandel”) or sign the paper petition at CILT, the Goldmine or Wharf Road.

If you’d like to read the report go to www.register.charities.govt.nz and search for “Coromandel Rudolf Steiner Kindergarten Trust”.

If you missed the meeting let us know if you want to get involved or advised of upcoming events.

On Facebook join Coromandel Steiner Community Group for updates, or tell us your email address.

Playgroup questions: Angela 021 255 0399. Steiner Community Group (crafts, festivals etc): Julene 020 4060 8102



Steiner Playgroup Teacher Angela McWatt with her former kindergarten student Saffron Wake, who will be assisting at playgroup

Rob's 

Small Motor Repairs

**Come along and see us in our new shop at
18 Kapanga Rd (old 4Square)**

Rob & Carolyn 866 7865 or 021 618 601

Plastic-Free Coromandel Town

By Robin Münch



It's Plastic Free July and we hope you're doing everything you can to reduce your plastic waste. Remember to take your reusable coffee cups and containers for all of your July takeaways.

In June we had a fantastic time with Sustainable Coastlines. As part of a nation-wide project, they hosted a workshop to train locals how to monitor and audit the litter on our beaches. We collected and audited our first 677 pieces of litter from a 100-metre stretch of local beach. We grouped the litter into categories such as bottle caps, plastic bags, and polystyrene. 380 pieces of our litter collection were fragments of plastic rope from mussel farms. We'll carry out monitoring every three months. If you'd like to join us for the next one, contact us via Facebook.

Sewing Bees – you're welcome to come along and sew, iron, cut or chat about plastic reducing ideas at our fortnightly sewing bees in the Council Chambers – Tuesdays from 1pm to 3pm – **2 July, 16 July, 30 July**.

You've been hanging out for another beeswax wrap workshop. It's happening on **Sunday 28 July**, 10am to 2pm, in the St John rooms, Tiki Rd, Coromandel. \$5 to make three wraps.

Thanks to Waikato Regional Council and the Coromandel Community Board, we have more jute bags to give away. Let us know via our Facebook page if your household hasn't got one or phone Robin on 021 252 6892. We'll also be out and about in the community giving them away (watch our Facebook page).

If you have any time to help us with stalls, workshops or other plastic-free activities, please let us know.

Follow us on Facebook – Plastic-Free Coromandel Town



Plastic-Free Coromandel Town working with Sustainable Coastlines to set up a beach litter monitoring site near Coromandel



Wild things

This photo was taken by Pauline Barry, a visiting scientist and photographer. The swallow was coming out of an old mine shaft. They feed over wetlands, ponds and streams where they feed aerially on small invertebrates. They are commonly seen feeding over the McGregor Bay wetland.

They are a self-introduced species increasing in numbers in the 70's. They build nests out of mud and grass on ledges or attached to vertical structures out of direct sunlight. They are prolific breeders and can raise three broods between August and February.

Photographs of our wildlife are welcomed.
mcgregorbaywetland@hotmail.com

*The perfect finish
to your home or
bach – beautiful
wooden joinery*

Ruamahunga Bay Joinery
email info@woodenjoinery.co.nz
www.woodenjoinery.co.nz



COROMANDEL GARAGE DOORS

Sectional/roller/tilt/auto door openers

Maintenance & installation
service for all your garage
door requirements
Peninsula wide

Don McLean
0224532188
corogaragedoors@gmail.com



COROMANDEL TOWING

24 HOUR TOWING

unlocks, jump starts, fuel, salvage and breakdowns

corotowing@gmail.com
Call Ian 027 275 8468

WINTER PIZZA

\$12

DINE IN & TAKEAWAY

**MONDAY - THURSDAY
ALL DAY**

1ST JUNE TO 1ST OCTOBER



**STAR & GARTER
HOTEL**

Coromandel Town
Ph 07-866-8503

MURAL WITH A MESSAGE



Chris Wornall sent in the above photo taken at Oamaru Bay. The mural was painted by Rebekah Pearson and features plastic waste in the ocean. The mural inspired Chris to send in the Haiku printed right.

Haiku

By Chris Wornall

how long until gone?
four hundred and fifty years
one plastic bottle!



Coromandel Contract Bridge Club

Susan Swan and Tadek Gawor, our overall winners, with Lyn Whitcombe our president

By Judy Bronlund

The Coromandel Contract Bridge Club held its annual tournament in May. Players from around the peninsula entered the tournament; Estelle Cashmore was the director.

Thanks go to our members for their work and for donations of seafood for the raffles; also thanks to our many sponsors.

They were: BP Coromandel, Coastway Cutters, Coro Amcal, Coro Butcher, Coro Dairy, Coro Four Square, Coro Garage, Coro Garden Centre, Coro Gold Diggers, Coro Gym, Coro Liquor Co, Coro Oyster Co, Coro Smoking Co, Driving Creek Railway, James & Turner, K & K Brett, Lighthouse Studio, Matarangi Four Square, Moana, Richardson's Real Estate, Sanfords, Star Gallery, The Waterworks and Wyuna Studio.

Our raffle winners were drawn at afternoon tea time; lots of very happy winners. Then the session winners were announced before the overall winners were named. The photo shows Susan Swan and Tadek Gawor, our overall winners, with Lyn Whitcombe, our president.

Our local club competition for July is the Individual Championship. It is good to have both Val and Tadek back on deck after spending time in hospital. A few members are holidaying abroad, hoping to miss most of the winter weather. New members would be most welcome; lessons can be arranged. We play each Monday evening at the St John rooms.

Contact Val (07) 866 8730

Alpha Drywall

Fix, Stop,
Cove & Paint
since 1986



- Plasterboard Fixing, Stopping and Painting specialists
- All grades of stopping including Fibrous, Cove and GibBoard
- We specialise in wallpaper to paint finish upgrades
- Professional, reliable, quality service
- Free quotes

Phone Geoff 022 027 0290
PO Box 177, Coromandel

Email alphadry@gmail.com
AWCI (licenced trademan)

GIVE A LITTLE SUNDAYS



\$10 PIZZA SUNDAYS

\$20 4 BOTTLES OF BEER

Heineken, Heineken 0%, Tiger, Sol, Xport Citrus, Xport 33

\$1 from every pizza is donated to a local community service.

**ALL DAY EVERY SUNDAY
DINE IN ONLY**



**STAR & GARTER
HOTEL**
Coromandel Town

CONDITIONS APPLY

Scott Simpson MP for Coromandel

P Thames 07 868 3529
Kaiawa 09 232 2588
Kaitiaki 07 549 4312
E mpcoromandel@parliament.govt.nz
W www.scottsimpson.co.nz

National
Funded by the Parliamentary Service Authority
by the Scott Simpson Trust



With more than 150 Years of service behind us, we understand the importance of the past and sharing memories of someone that has left much to cherish and remember.

**Remembering
and celebrating life**

TWENTYMANS

FUNERAL DIRECTORS
Since 1867

07 868 6003

funerals@twentymans.co.nz
www.twentymans.co.nz



Hon Scott Simpson MP for Coromandel

Winter is here and with it are the usual challenges that this season brings.

Weather plays a big part in so much of what we do and in our day to day lives here on the Coromandel Peninsula. It



can be our best friend and also our greatest risk.

Tragically conditions can sometimes lead to circumstances none of us would wish for.

That was the case late last month with the untimely passing of Coromandel Peninsula hero, Jim Evans, from Whitianga. His light plane came to grief in poor weather as he was flying over the Coromandel ranges. Sadly Jim, the only person on board, was killed. He was a real legend and had been awarded a Kiwibank Local Hero Award for his community work. Jim's passion for flying was best represented with the programme he set up with school students building aeroplanes and passing on to them an interest in aviation and the possibilities that the sector held for them in terms of future careers. Jim will be much missed by so many.

That same weekend rescue services hauled four yachts out of the sea near the top of the Peninsula and Great Barrier. They were rescued safe and sound thank goodness.

For me these events just highlight how important our emergency first responders are and what a vital role they play in our wider community. The majority of them are volunteers and they do incredible work, often under the most trying of circumstances.

It's not just weather that challenges us, so too does our geography. It's rugged, remote and, at times, dangerous. The folk who were crucial in locating Jim's plane were volunteers from Land Search and Rescue. Their efforts were on the ground, in the bush and hills of our beautiful Peninsula. They along with personnel from other support agencies swung into action as they always do at times of crisis.

Collectively we as a community have much to be grateful for in terms of the work they all do on our behalf and when we need them most.

If you know one of these wonderful people, if they are a family member, a work colleague or a fellow club member... please join with me in thanking them for what they do. It's at times of emergency and tragedy that we appreciate them most but often we don't thank them enough. So from me and our wider community... thank you.

Coromandel Independent Living Trust

Coromandel Independent Living Trust



You may have seen a new

face on Reception at the CILT Resource Centre over the last few months. I'm Brianna Moody and I have been working for CILT for the past eight months. I'm at the Resource Centre every Tuesday where we provide information on health and disability services, funding for people to attend hospital appointments in Thames and Hamilton, and rooms for agencies to hold regular clinics.

I also work for Kiwi Can, a life values programme for children age 5-12. Gemma Lee and I go to Colville School every Friday and give lessons on values such as respect, resilience, integrity, and positive relationships.

It has been an incredible opportunity to learn about the many programmes CILT have available to the community, including going to a two day conference in Auckland on behalf of CILT for The New Zealand Federation of Disability Information Centres annual meeting. I learnt how organisations cater to many with physical or mental disabilities in their communities.

Fellow Kiwi Can Leader, Gemma, has joined the team at the Work Co-Op on Mondays and Tuesdays. The Work Co-op has been operating out of a villa in Wharf Road in Coromandel Town for over 15 years. The programme supports people within the community who have a mental or physical disability, probation clients to complete their community service hours and safely reintegrate into the community, and youth transitioning from school into employment and training. The Work Co-op is always a hive of activity with participants cooking and eating lunch together daily, learning new computer skills, creating art, gardening and catering for events. They also make greeting cards that we sell at the Resource Centre. All money raised from the cards goes back into the Work Co-Op for things such as cooking ingredients and craft resources.

We are really excited and honoured to have the opportunity to take on the operation of The Bizarre – an iconic and essential community service here in Coromandel. We intend to continue to run the Bizarre in a similar way as it has been, and we will still deliver a donations programme. We appreciate the support shown by the community during this changeover period, and wish to acknowledge the wonderful work done by The Bizarre trustees. We also wish to thank the wonderful volunteers who keep The Bizarre ticking along, and hope that they continue on with us. More details will come soon so stay tuned!

If you need to get to Thames for an appointment or to do some shopping, every Thursday one of our amazing volunteer drivers takes a van to Thames and back. This is a door to door service, picking you up from your home around 9am and everyone meets at Pak 'n' Save at 2pm to come back to Coromandel. Passengers pay \$6 one way or \$12 return, children are half price. Please note gas bottles are not permitted. Seven seats are available each week. If you have a wheelchair or electric scooter please let us know so we can make that space available. To book a seat on the bus, please come in and see us at CILT or call us (07) 866 8358.

CILT is very pleased to be able to offer the popular Incredible Years parent programme in our area beginning on **27 July**. This is a wonderful course for parents or caregivers of children between the ages of 3-8. CILT is proud to be able to again offer this successful and highly thought of programme which is free for enrolled parents. For further information or to enrol please contact Kate Donoghue on 027 692 6494

As always, for more information about our services, come in to see us at 'The Resource Centre at 45 Tiki Road, Monday to Thursday, 9am-3pm. Our friendly staff will be happy to chat with you

GULF MUSSEL FARMS SKIPPER

We are looking for experienced, motivated, fit and reliable skippers to join a proactive and growing aquaculture business.

A positive can-do attitude is required and the ability to work well in a team and follow instruction.

Gulf Mussels provides a competitive remuneration package, a safe workplace and a training programme.

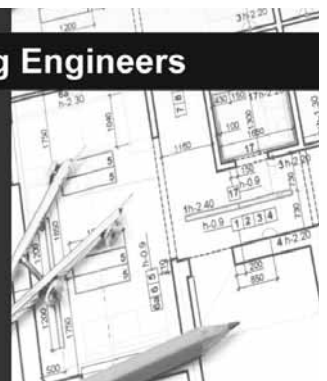
Contact Chris on 0274 596808
or email chrisgulfmussels@gmail.com

Llandem Consulting Engineers

Derek Stewart
CP Eng MIPENZ

- Structural
- Civil
- Geotechnical

llandemengineering@gmail.com
(07) 866 6704
027 442 4234



/Richardsons

Real Estate Ltd MREINZ / Coromandel
Licensed REAA2008

Meet the team... Kim, Robyn,
Melissa, Laurie-Ann & Lynne



New Listing



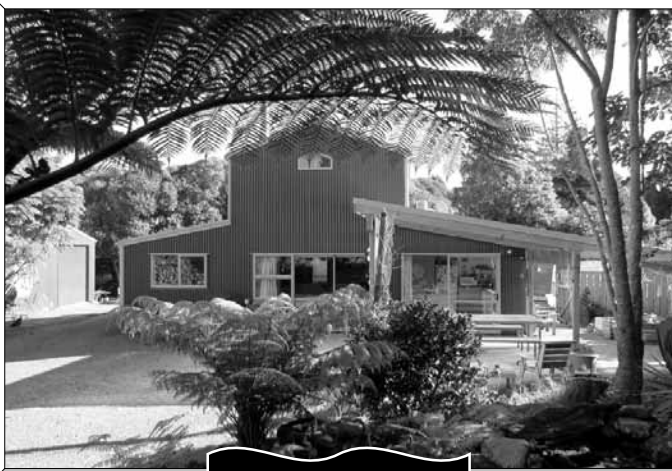
New Listing



* Bespoke design in "Greenhills" setting * Smooth contemporary lines of 'Nuwall' exterior cladding * Open-plan living * Sun trapped decking * 3 dble brms (master ensuite) * Office * Large garage * Concrete drive. **\$720,000**



* A snapshot of yesteryear! * The classic style & character of heritage architecture * 3 double bedrooms * Open-plan living (fireplace & heatpump) * Superb decking * Double garage * 1,095m2 section. **\$605,000 (Under Offer)**



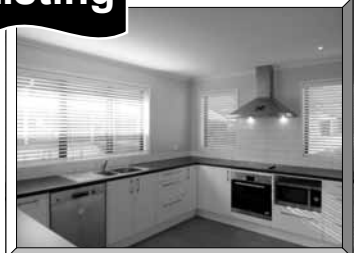
New Listing



New Listing



* An awesome 3,506m2 property in a Driving Creek setting * 3 bedroom 'American Barn' style home * Separate large garage/workshop with attached 'studio' * Double carport * Native & fruit/citrus trees. **\$710,000 (Under Offer)**



* Approx 4 year old brick home in "Greenhills" * Views over neighbouring farmland * 3 double brms (master ensuite) * Large open-plan living * Office * Excellent covered decking * Spacious garage. **\$640,000 (Under Offer)**

/Richardsons

Real Estate Ltd MREINZ / Coromandel
Licensed REAA2008

Proudly making real estate
a reality for Clients and
Customers for over 59 years

www.richardsons.co.nz

151 Kapanga Road, Coromandel

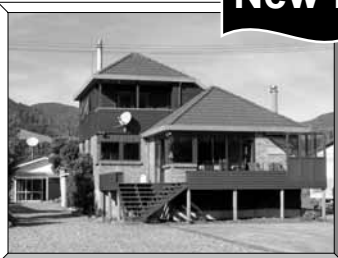
Ph: 07 866 8900 ~ Kim 021 533174

Robyn 021 448975 & Melissa 027 2498287

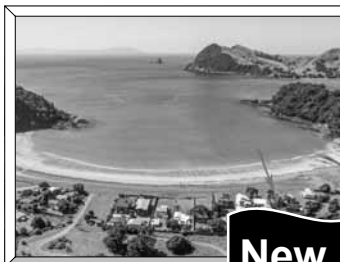
Rental Manager ~ Laurie-Ann 027 9276368



New Listing



* PORT CHARLES waterfront * A wonderful setting with panoramic views of the harbour, ocean and the Coromandel ranges * 3 double brms * Great decking * Garage * Flat 812m2 section. **\$540,000**



New Listing

* Beachfront on the shores of SANDY BAY * Superb views of the harbour, Lion Rock and over to Great Barrier Island * 2 bedroom A-Frame style home with an impressive boat shed/studio at the rear * Bring your family now! **\$830,000**

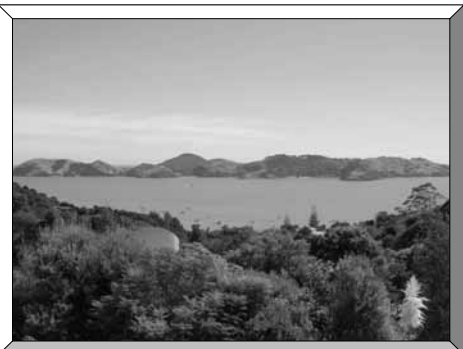


* A stunning lifestyle property of 20.7ha * Spacious 3 brm home * Double garage * Barn & stock yards * Stunning landscaping * Sea/Rural views **\$By Negotiation + GST (if any)**



* TE KOUMA BAY * 3 bedroom (1 up & 2 down) home with 2 bathrooms * Large double garage * Excellent decking for great summer BBQ's * Stream/Reserve boundary. **\$569,000**

5 properties SOLD by Richardsons last month ☺ Have you considered selling? Come and talk to us... we have qualified buyers waiting for the right property.



* TE KOUMA BAY * Fantastic harbour & island views * 3 brm 2 bathroom home * Decking * Garage * Very private. **\$789,000**



* "Coromandel Meatkeeper" * This prime cut business is seeking new owners * Please call for a discussion. **\$130,000** * SAV + GST (if any)



* Immaculate 3 brm home in "Greenhills" * Open-plan living * Great decking/patio * Landscaped & private yard. **\$625,000**

Heartbeat

By Kathy Garden, Volunteer Team Manager, St John, Coromandel

New Management

I am Kathy Garden, Volunteer Team Manager for Coromandel. We have farewelled outgoing-Station Manager Julie Scampton, and I am the new contact person for Ambulance Operations in Coromandel.

Potential volunteers – I am looking forward to hearing from you!

More Ambulance Cover for Coromandel

The way we work here is changing, with significant benefits for our community. From July the Coromandel ambulance will be crewed at a minimum from 8am to 8pm 7 days a week, which is around 25% more hours than previously. Our ambulance is part of a network across the upper peninsula, together with the ambulances based in Thames and Whitianga, the Colville First Response Unit, the local team of doctors and nurses available for emergencies, and the rescue helicopter services. The increased crewing level is a 12-month trial, and we will be measuring the differences for patients in terms of response times in particular.

Falls

Last month for Coromandel there was one call-out per day on average. Approximately a quarter of these were for falls. Quite a number of falls happen when a person wakes up and is momentarily disoriented, or a bit light-headed, and generally uncoordinated. Needing to get to the bathroom quickly makes this a recipe for disaster. There are some obvious things to do here, like keeping floors clear and nightlights on, and moving as slowly as possible. But there is another important thing that is easy to do – get your prescription medications reviewed regularly.

Review Medications Regularly

Over time, many people are prescribed long-term medications for conditions like high blood pressure, acid reflux, cholesterol, anxiety, chronic pain, and other issues. The combinations sometimes have negative effects, increasing the risk of falls. Medications need to be reviewed regularly to make sure any new research about doses or better options can be applied. If this sounds like you and you haven't seen a doctor for a while, go now!

Kathy Garden, kathy.garden@stjohn.org.nz



St John
first to care



Mahamudra Centre

By Jan van der Vliet, Director

The days are getting colder and the fireplace is doing its bit to keep us warm in our residence. Our great news for the Gompa (mediation hall), and for the participants in retreats and other users, is that we have had a heat pump installed, which is wonderful for the cold and of course the summer days.

One of our trustees, Katrina Robertson, has been so kind to initially finance this whilst we are raising funds through the "Give a Little" web page. Any donation towards covering the cost of this would be so much appreciated

We just had a wonderful retreat lead by Za Rinpoche on Vajrayogini. With nearly 30 participants, staff, cooks and woofers, our Centre was fully occupied with such great energies flowing throughout.

Vajrayogini is a Tantric Buddhist female Buddha and a dakini. Vajrayogini's essence is "great passion", a transcendent passion that is free of selfishness and illusion – she intensely works for the well-being of others and for the destruction of ego clinging. She is seen as being ideally suited for people with strong passions, providing the way to transform those passions into enlightened virtues.

Our next "Free Lunch Friday" community lunch will be held on **Friday 28 June** at noon – always thoroughly enjoyed by all.

For the month of July our centre will be closed for much needed staff leave and maintenance works. We will open again to all from **1 August** onwards and commence the community lunches again. In the meantime please check our website for updates on our summer programmes as they are being updated and developed including the morning free guided meditations.

Nearly two weeks ago I moved permanently to the centre to fulfill the role as the director. Up to that time I was doing this on a part-time basis whilst finishing my role as the coastal engineer for Council. You might have seen me or met me before when I was working here some five years ago. Do come and see me to get acquainted over a cup of tea or I will see you at our Colville Store or café.

Take care of yourself and stay warm.

Coromandel Yesterday

By Meghan Hawkes

- Twenty black possums set free on the Coromandel Peninsula some years ago were the inspiration for the Auckland Acclimatisation Society's decision to liberate possums for trapping at Taumarunui and on the Waitakere ranges. It was thought the fur of the peninsula possums would now be quite valuable.

- A proposed toll gate on the Coast Road, 36 miles from Coromandel, was refused permission by the Coromandel County, although the site of the gate would affect the county very little. The road was subject to heavy traffic from outside districts and threatened by sea erosion and its upkeep was a great drain on Thames County. The gate was expected to enforce contributions from tourist traffic toward the upkeep of the road.

- Mr W Townson, in search of rare plants that grew at high altitudes, ascended the Moehau which had particular interest because it was the highest point on the Coromandel Peninsula. Moehau had fascinated him for many years on account of strange Maori legends associated with it. It was believed that on its upper slopes lived a race of little red men, parties of whom went down at night to fish in some of the bays near Port Jackson, returning at daybreak to their mountain home. On rainy nights or in misty weather their voices might still be heard but Mr Townson felt that the voices were those of native frogs which were plentiful in the watercourses and wet moss near the summit.



WWW.JAMESDRAINAGE.CO.NZ

Excavators | Tip Trucks | Bobcats | Auger & Chain digger hire
Skip Bins | STMS Services | Septic Tank Services | Portaloo Hire

1020 Tiki Road, Coromandel
p. (07) 866 8308
e. jamesdrainage@xtra.co.nz



**Coromandel
QUARRY &
Contracting Ltd**

- All grades of metal delivered
- Driveways, roading, earthworks

Telephone 07 866 8306

email: richard@cqc.co.nz www.cqc.co.nz

The Colville Project Update

The Colville Project intends to create a new wellbeing and education centre to support our community and help to create growth in the upper northern Coromandel peninsula.

We've been busy fundraising, holding information sessions in Colville, with more planned for the near future, and meeting with Council and community stakeholders such as FENZ and St John Ambulance. In recent months, we've begun working with Beca on our concept design, discussing the relationships between the proposed buildings and nature to encompass the project vision. It's progressing nicely and we'll be providing further updates on our Facebook and website as the design takes shape. Our next big milestone is the completion of this design and its unveiling to the community for feedback.

We have also been very fortunate to receive several generous donations from benefactors alongside the amounts regularly received via fundraising events and our amazing support base. Our next event is courtesy of Wharf Road Café on **28 June**.

Don't hesitate to get in touch if you want to know more or have any ideas, or queries; we love to get your input. We can be reached at thecolvilleproject@gmail.com, www.thecolvilleproject.co.nz or via our Facebook page

Coromandel Embroiderers' Guild

By Jenny Penman

The weather forecast put off a lot of our out of town members from our May meeting. Those in attendance however were brought up to date with the happenings of the Auckland Guild Regional Day that seven of our members had been to earlier in the month. Our guild is one of 10 guilds that come under the umbrella of the Northern North Island region which is in turn part of seven regions making up the Association of NZ Embroiderers' Guilds – in all 58 guilds nationally. These Regional Days give an opportunity to not only see and hear the projects other fellow stitchers are undertaking but also to be treated to some interesting speakers. This year Lucy Patterson (mountainthreadstextiles.com) shared her experiences from an area of Northern Vietnam where hemp is grown by the locals, harvested, prepared, spun, woven, dyed, embroidered and sewn into women's skirts measuring eight metres in circumference, as well as men's pants and jackets. They certainly brought some vibrancy to the grey winter meet. It will be Coromandel's turn to host a regional day in 2020 so we will be trying to turn up the colour too.

The May workshop tutored by one of our own members Jill Wilson was all about colour. Wool felt was appliqued onto a range of project articles and further embellished with contrasting wool, cotton and silk threads. The feedback was that it was a thoroughly enjoyable and inspiring two days.

Some of you may have seen the Stuff Article 14 May "From cows and cars to needles and yarn". It told of the only male member of the South Waikato Embroiderers' Guild, Tokoroa based former dairy farmer and coach builder Neville Simons. Neville sustained a head injury after a serious farming incident over a decade ago and has found stitching just the thing for his rehab in that it helps with his hand and eye coordination. It wasn't the injury that initially got him into it though but rather his involvement in medieval reenactments. A lot of the garb has embroidery on and when he wanted to learn some nice stitches to go on a cape he just went along to the local guild... and stayed. You would find the Coromandel Guild equally welcoming.

Our next Guild Meeting will be on **Wednesday 3 July**.

For further information about the Coromandel Embroiderers Guild and related activities contact Lettecia Williams (07) 866 6626

Coromandel Garden Circle

By Jenny Penman

Our June meeting started with a shared soup luncheon. With six different varieties on offer it was great to be able to return several times sampling a few rather than having to make a far too difficult decision. There was no judging in this category but our usual competitions brought many entries this month. The mild winter to date has meant that members had a wide variety of blooms to show – roses, camellias, penstemons, poinsettias, hibiscus and iris, to name a few. The theme for the Special was "Winter Vegetables" and the basket of blemish free brassicas and leafy greens that took out first

place was an absolute credit to the vegetable grower in that member's family.

Following lunch one of our own members showed us some of her collection of tillandsia (air plants) that she grows. The variety of colours and forms that these plants can have were surprising and some inventive ways to decorate objects with them can add even further interest. They require very little care and attention in the way of watering and feeding, which always adds to a plant's appeal. We were then shown how to take our own rose cuttings – great to do at this time of year while you have the secateurs out pruning – and were told that it is well worth having a go at getting one of those special blooms from a

florist's bunch to take root the same way. And don't have a supply of rooting hormone to hand? Then a dip in a pot of honey will do the trick.

Next month we will meet at the earlier time of 12 noon again to enjoy a shared Xmas themed luncheon together before some entertainment.

Our programme for the year includes talks, demonstrations and day trips to places of interest and events. We meet the second Wednesday of the month, usually at 1.00pm at The Combined Club, Woollams Ave.

For more information please contact Jeni Mudgway 021 0227 5341

Coromandel's Premium Accommodation & Management providers..

Luxury Apartments
Holiday Managements
Long Term Rentals
Linen
Cleaning



Luxury Apartments
Holiday Managements
Long Term Rentals
Linen
Cleaning

Diane Arundel Property Manager

265 Kapanga Rd, Coromandel 07 8668803 0274 361729 office@accommodationcoromandel.co.nz 100% Coro Ltd



Walkers at commemorative plaque above Rings Beach, installed by soldiers in conjunction with kauri tree planting

Monday Walkers

By Irene Dunn

Hi – Want a tip for staying away from all of the bugs and viruses going around? Exercise in the fresh air! Dust off your boots and come and join us on our walks all around the area. Walk places you haven't been to before and enjoy the company of like minded folk.

We walk each Monday and meet at the north end of Woollams Ave car park at 9am. Phone the number below for more info on walks or to be added to our email list.

Happy walking everyone.

Contact Irene 021 157 8408

Poetry SPOT

CLL

By John Irvine

Curious, isn't it?
It's as if the information
will be somehow less alarming
as an acronym.

CLL

Sounds harmless enough.
Just three letters
that sound vaguely like
an American TV news station.

CLL

The full alternative is
unpronounceable anyway
I mean, fancy having to
find a word to rhyme with
chronic lymphocytic leukemia

CLL

I can live with that...

A Better Life for Everyone

By Catherine Delahunty

A better life for everyone, including the many endangered species on the planet, sounds like an impossible dream. However part of the barrier to this dream is the strongly promoted belief that a good life is not for everyone. Many people work hard for more than themselves, including in our northern Hauraki communities. There are hapu and community groups doing essential work to replant river banks and harbours and to protect biodiversity. There are people and groups with a real vision for our region and for everyone in it. In addition to the amazing kiwi recovery groups and wetland restorers there are pest control champions and tree planters. There are the people who work with people, trying to ensure access to health, appropriate education, housing and support. These people are not usually well paid or living celebrity lives. They are working with what is in front of them trying to create and maintain culture and community. They understand that a good life for everyone might mean we have less consumption and more community. It is possibly simpler to be living in the remote parts of the Peninsula where consumption is necessarily limited and the joy of life resides in the fishing, the garden, the forest and the local events. I have lived that life and I certainly did not miss the bright lights, new clothes or foreign holidays. But I also know it's not simple to maintain community and include everyone. I have been thinking a lot about the future which risks being riddled with inequality and climate chaos. Both these plagues are symptoms of a failed economic system which is presented as the only economic system possible. It would be interesting to have conversations about the future that did not assume either hyper capitalism or back to a mythical cave. Do we have to be just locally focussed in some form of survivalism or keep on racing over the cliffs of consumption of the Earth like addicted lemmings? We do have forms of organising that are tried and true but often not valued. You only have to study pre colonial history of Aotearoa to know that another world is possible and the roots still live on. If we look at the entire community sector in our area, underfunded and sometimes undervalued, there are examples of resilience, competence, economic stability and creativity which provide great value to our land and community.

We need to recognise and value these activities, and governments need to provide some more resources without taking over the functions of these groups who do it better than the state could do. Ideally this whole layer of community work, small enterprise and collaboration could be nurtured and could replace the corporate power that relies on extraction and excessive profit.

One example of a social good that deserves more support is the teaching profession. I was on the Education Select Committee for nine years in Parliament because I care passionately about education for human liberation and respect for the natural world. I have no romanticism about education systems which are driven by the job market or competitive assessments. But in my time I met many dedicated teachers who were losing heart due to low pay and poor conditions. If people think that it's an easy job, I urge you to spend some days in the sector. Whether it's early childhood education, primary, or secondary schools, it's a challenging job and it has been badly paid. If we want teachers to be inspirational and creative coaches of young people so they love learning and can develop their talents in any form we better support teacher only days, fair pay, quality professional development, school support staff, learning support resources, pay parity and more. At this time of writing the teachers and government may have struck a deal. They had to strike to get traction and striking is a right we must uphold.

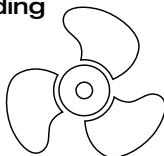
If we want good lives it starts with having conversations about better systems, valuing vital contributors, fostering the community sector, protecting the natural world and being willing to honour, not settle, Te Tiriti o Waitangi. Our area could lead by valuing the whenua and communities and their local activities rather than imagining the solutions to the ecological and inequality mess will be found from the outside.



COROMANDEL MARINE ENGINEERING

MARINE ENGINEERING & OUTBOARD SERVICING

- All makes, model & inboards serviced.
- Full computer diagnostics available.
- New & second-hand outboards for sale.
- Retailers for marine products – inc batteries, oils, plugs, Saltaway products.
- Aluminium & stainless welding by Certified Welders.



Telephone
Workshop/office:
07 866 8004
Grant: 028 2580 2351
Jackson: 021 059 7542

116, The 309 Road, Coromandel – 1km from the main road.

Animal Rescue Thames

By Alice and John Parris and Deedee

Firstly thank mews to everyone who has supported the rescue kitties with donations of cat food, sachets, tinned, biscuits. It's more than truly appreciated and is a lifesaver right now. Thanks for the donations of bedding, garage sale items, and a financial blessing which will help us through winter to feed our precious furbabies until they are rehomed.

Homed – we rehomed two of the grey mums kittens. The white patch black and grey with white feet went to Kaiaua. So only mum cat and smokey black kitten require homes now in her litter. Also homed our 11-year-old Burmese who came back to rescue due to unforeseen change of circumstances. The lady came wanting a young little kitten and was besotted with older smoochie, kissy cuddly Burmese. It was great that he pulled everything out in his trick book and got a home on a lifestyle block with a tripod dog and 16-year-old ginger cat (which was one she adopted from us 16 years ago). So hopefully all are settled and enjoying new found freedom and life in new forever homes.

We had one enquiry from a person who wanted a "kitten". When I went through our four and seven month olds she all but screamed down the phone she wanted a baby kitten, not old cats, despite me repeatedly saying kitten is from six weeks through 12 months. But she was adamant that kitten was under six weeks and demanded she have that, to which I said no, we had nothing under that age and legal age of adoption was over eight



weeks. The following rudeness from that person is definitely not printable which left me feeling very degraded after she abused us and hung up on us. This was just too much. These sad people have these really unrealistic expectations, then when they are not met, just abuse you beyond all measure. But we can not please everyone obviously.

To add insult to it all we ran out of tinned food, then biscuits, which meant a quick shop to top up. Our Queen's Birthday mini mini sale we raised \$72.50, which was pretty much what we expected from such a very low key event and that meant we could use that to buy tins and some biscuits for the cats to tide us over for a week.

Nothing new in as we can not take anything in due to our young ones growing up and our two grey boys have now been put into the cattery. The silvery grey should have been given wings as he was too full on in the house – hundred miles an hour and air-borne leaping from cage to bench to cage – which defies any and all explanation of safety. So as much as we loved them and the other quieter

sibling who was smoochy as, both now learn a newer life not in house and our home returns to a quieter level of insanity with cats and kittens in most directions.

Deedee, our white patch grey mum, and her son are both enjoying freedom in house. Dee is amazing and has progressed beyond all measure. She is playful, quiet and when we brought her into the bedroom, once her feet hit soft blankets she was paddling hard out, kneedling dough on the soft blankets. To watch the pure joy and big purrs was gorgeous. These two very young mum cats had obviously been in a home at one point, but as they got older their owners must have moved and abandoned these mum cats, which is incredibly sad, as they are so beautiful and now relearning it is okay to be in a home, okay to be loved and okay to play daft games with the kittens. The track and ball game is the grand favourite. Dee will pat and swat at you – she just gets a wee bit over excited but quickly knows that when the stroke stops and hand is withdrawn she has gone a tad too far with her swats and nip. There is no malice in what she does just she is between two worlds – the "you must fend, protect and be independent" world to the "loved, cherished, smoochy housecat" world – so these two both merge and collide, but she is progressing really well. Her sister is many steps behind but she too will be like Dee and enjoy playing with the kittens.

Wanted – seriously needing forever homes for our felines from four months to four years, all desexed, wormed and deflead. Most would benefit from rural, lifestyle properties to run and play on. Loads of love, attention and warm home to call their own.

Also need warm winter blankets, towels and cat biscuits/tinned sachets – all needed to help feed our rescue kitties whilst in care.

Meow furr now.

Any enquiries purrlease contact Animal Rescue Thames (07) 868 2907 (afternoons best), 532 Thames Coast Road, RD5, Thames 3575



Nourishing Yoga Winter Workshop

Saturday 13 July, 10am to 12.30pm, \$30, Anglican Church Hall, 170 Tiki Rd, Coromandel Town.

This workshop is the perfect way to treat yourself in the depths of winter. It is an invitation to unwind, slow down and be deeply nourished. We will begin with simple yoga poses to open, soften and stretch winter weary bodies, before holding longer restorative poses (where the body is completely supported by props) to allow the body and mind to relax and release. Then, from this wonderful relaxed space, a guided relaxation will allow any remaining physical and mental tensions to simply fall away. There will be a few decadent surprises throughout the morning as well and delicious homemade cakes and organic teas to finish!

No previous experience of yoga is required and all equipment is provided. Spaces are limited due to the amount of props required to create maximum comfort and minimum effort, so book in quick.

Facilitated by: Rebecca Leaker, 500 Hour Qualified Yoga Teacher, with over 23 years of yoga experience.

Bookings essential, spaces limited.

Contact: Rebecca on 027 407 0079 or rebeccaleaker@gmail.com, www.rebeccaleaker.com

Purnell

LAWYERS

BRENDA FLAY, SOLICITOR:

Travels to Coromandel on Tuesdays.

Please phone the Thames Office (868 8680) for appointments.

PARTNERS: Hayley Green and Brenda Flay

THAMES OFFICE: 611 Mackay Street, P.O. Box 31, Thames

PHONE: 868 8680 **EMAIL:** info@purnell.nz

COROMANDEL OFFICE: Tiki House, Tiki Road

OUR SERVICES

ESTATE PLANNING / PROPERTY / COMMERCIAL

www.purnell.nz

THAMES

WHITIANGA

COROMANDEL

CoroLocalLegend with Coromandel Four Square

Congratulations to Brian Webb of Coromandel, who is the recipient of a gift hamper from Coromandel Four Square. Brian has been nominated by Linda McKellar for his ten years volunteering at the Coromandel Library. We also received some words from Carlene Carmichael who wrote, "Brian is such a willing chap. Whenever we are short on volunteers he is the first to help us out. He is a lovely quiet man who works away diligently and never with a fuss."

Thanks for your community spirit Brian, you are a true CoroLocal-Legend!

Do you know someone who deserves recognition for their amazing community spirit?

Drop us a line telling us and they will receive acknowledgement in the Coromandel Town Chronicle as well as receiving a \$50 gift hamper from Coromandel Four Square.

Send your nominations to: Coromandel.foursquare@foodstuffs.co.nz (subject line: CoroLocalLegend) or post to: CoroLocal-Legend, PO Box 5, Coromandel 3506. Kindly refrain from nominating family members



Good citizen

Jeff Howarth has presented Damian and Renee Langley, owner/operators of Coromandel Four Square, with a good citizen award.

"Since they have taken over Coromandel Four Square they have been so generous with the support of individuals and groups within our community that it is time to turn the tables and recognise their efforts. Obviously they can't receive their own CoroLocalLegend award so I created something just for them." said Jeff.

Jeff visited Coromandel Four Square with Joanna Pratt, a previous winner of CoroLocal-Legend, and presented Damian and Renee with a bunch of flowers, a voucher for family entry to The Waterworks and a voucher for a dinner for two.



Coromandel Writers

A Close Shave – written by Wailin

Our friend David Black had an electrical business when he lived in Coromandel and suggested we put in a dimmer switch in our living room. It worked well for years until one day the light just wouldn't dim and we neglected having it removed. It no longer worked but we saw no necessity in removing it in a hurry.

We took great care of our solid historic kauri house, built in 1872. Even the paint on the front of the house is still the original milk-based paint, has never been repainted and this is the year of 2019, which says a lot for the milk-paint, though not the lead that it contains. Of course alterations have been made inside the house to suit ourselves but we did not muck around with the basic shape – the hall still ran the length of the house with rooms on either side. Care was taken at nights to turn off all lights and although the previous owner, Barry Brickell, had had the house wired for electricity, the wiring was quite old. Whenever we went out of town we carefully pulled out from the main fuse-box all unnecessary fuses other than the one that worked the deepfreezer and refrigerator, before turning the mains back on. Once, we

returned home after a week away to find that one of us had forgotten to turn on the mains again after we had pulled out the fuses and discovered the freezer completely defrosted and a huge mess of melted foods inside. It was a costly and work-making mistake and one we try not to repeat.

All ran smoothly until one evening when our young son Joshua was going to bed. He mentioned that the light switch felt quite warm but somehow we didn't take much notice as we were too engrossed in reading. Suddenly the light went out and we could see the switch glowing in the dark and smoke billowing out up the wall beside the switch.

Tom pulled open the front door and turned off the main power supply from the switchboard while I raced through to the neighbours next door to use their telephone to call our local fire brigade. It was not the time of cellphones and we had no phone in the house. Peter and Marion Shives next-door were very calm and collected Peter picked up his fire extinguisher and a torch and we raced back to the dark house while Marion phoned the fire brigade.

By the time they arrived up our drive the small fire had been put out by Peter's fire extinguisher. Everything was examined carefully by the fire brigade and declared

safe before they left and we could go to bed. Needless to say we now own several fire extinguishers and had the dimmer switch removed and never replaced. The brigade informed us that if a dimmer switch no longer works it should be removed immediately as it can start a fire in the wiring as it did with ours. In the corner of the living room there is a tiny smoke blackened area on the kauri lined room which we have left there to remind us of the close shave we had one dark winter night.

Writers group update

Eight members were present at Te Kouma for our June meeting.

Our homework topic of "On the cusp. A childhood memory" evoked many different angles of writing. The impromptu writing topic of "The antithesis personality to yourself" created much laughter during the sharing of work written which included the personalities of nurse, gigolo, and possum catcher.

Books discussed and recommended were *The Sealwomen's Gift* by Sally Magnusson, *Go Want Gone* by Jenny Erpenbeck, and *Double Shot of Happiness* by Judy Sharp

Any enquiries to Lora Ph (07) 866 7176



gasoline alley services

Coromandel Garage Ltd

What we offer:

- Service and repairs on all makes and models
- WOF's
- Motorcycle WOF's

- Pensioner WOF's \$40
- Call out's & tow in's
- LPG bottle swap & filling
- Car & trailer hire

- All tyres
- Fuel

BP Card Accepted

Best Value for your money
with over 40 years of combined experience from our two fully qualified mechanics.

Coromandel Garage Ltd, 226 Wharf Rd, Coromandel. 07 866 8736

Proprietors: Darius and Hilary Visser

Coromandel Bus Matters

By Lora Mountjoy

Thank you to all of the people who made contact after reading



my letter in the June Chronicle. I was encouraged by the offers of support and touched by the stories of families and individuals badly affected by the lack of public transport to Thames and beyond.

In one instance I heard of a son, in another a grandmother who for different reasons can't drive and can no longer visit their Coromandel family. Then there was a woman who found herself trapped here for three months post-surgery with an arm in a sling. Older folks are anxious about their ability to remain in Coromandel Town or their homes on the coast if they can no longer drive, and a teenage schoolboy told me he wanted to go to an event in Thames, but "no transport". An 81-year-old sister, visiting from overseas, spent a long time trying to work out how to get here from Rotorua before accepting that her brother would have to drive down and pick her up.

Although common sense and advice from those in the know told me to focus on the connection between Coromandel Town and Thames, for many the inability to get to and from Hamilton is a real issue. While InterCity claims to "Operate daily buses to Coromandel from locations across the North Island", getting here from Hamilton means starting at 4.20am and involves almost two hours waiting in the extremely grimy and grotty Sky City terminal in Auckland. Total time: six hours 50 minutes for a journey which takes two-and-a-half by car.

While not giving up on the Hamilton connection, we have to start somewhere and so we are preparing a petition calling for a daily bus to Thames and back at a time which works for Coromandel people and visitors too. In the meantime we are gathering support and information before we approach the Community Board.

If this is an issue which affects you, we would like to hear about it. Please contact lora.mountjoy@gmail.com (07) 866 7176

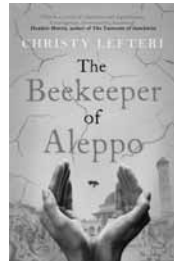
Library News

By Raewyn McKinney

With winter setting in, it is the ideal time to curl up in a warm spot with a good book. The library has thousands of good books to choose from, with something for every reader, whatever their preference. Most of our members are interested in general fiction, purely for entertainment purposes. However, we also cater for those who want to increase their knowledge with a good selection of travel, history and biographical non-fiction. We also have a variety of books for those who want to further an old hobby or take up a new one; from keeping bees or chickens to cooking, art or handicrafts; whatever your interest we can probably help.

This month sees new purchases from popular authors Jeffery Deaver, Clive Cussler, Stuart MacBride, James Patterson, Jock Serong, Danielle Steel and Alison Weir.

We have also purchased:



***The Beekeeper of Aleppo* by Christy Lefteri**

Nuri is a beekeeper; his wife, Afra, an artist. They live a simple life, rich in family and friends, in the beautiful Syrian city of Aleppo – until the unthinkable happens. When all they care for is destroyed by war, they are forced to escape. As Nuri and Afra travel through a broken world, they must confront not only the pain of their own unspeakable loss, but dangers that would overwhelm the bravest of souls. Above all, they must journey to find each other again. Moving, powerful, compassionate.

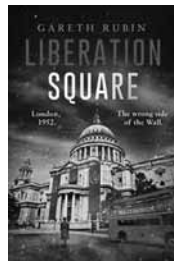


***The Daughter's Tale* by Armando Lucas Correa**

New York City, 2015: Elise Duval, eighty years old, receives a phone call from a woman recently arrived from Cuba bearing messages from a time and country that she's long forgotten.

Berlin, 1939: Amanda Sternberg is fleeing Nazi Germany with her two young daughters, heading towards unoccupied France. She arrives in Haute-Vienne with only one of her girls. Their freedom is short-lived.

Inspired by one of the most shocking atrocities perpetrated by the Nazis during World War II.



***Liberation Square* by Gareth Rubin**

It's 1952 and Soviet troops control British streets after winning the Second World War. After the disastrous failure of D-Day, Britain is occupied by Nazi Germany, and only rescued by Russian soldiers arriving from the east and Americans from the west. The two superpowers divide the nation between them, a wall running through London like a scar.

On the Soviet side of the wall, Jane Cawson calls into her husband's medical practice, hoping to surprise him, but soon finds her husband Nick has been arrested for murder. Desperate to clear his name, Jane follows a trail of corruption right to the highest levels of the state. And she might find she never really knew her husband at all.



***The Cinema at Starlight Creek* by Alli Sinclair**

How far would you go to follow your dream? Queensland, 1994: When location manager Claire Montgomery arrives in rural Queensland to work on a TV mini-series, she's captivated by the beauty of Starlight Creek and the surrounding sugarcane fields. She must gain permission to film at an art deco cinema, located at Starlight Creek. But there is trouble ahead.

Hollywood, 1950: Lena Lee has struggled to find the break that will catapult her into a star with influence. She longs for roles about strong, independent women. Lena puts her career on the line to fight for equality for women in an industry ruled by men. Her generous and caring nature steers her onto a treacherous path, leaving Lena questioning what she is willing to endure to get what she desires.

The library is open from 10am to 1pm from Monday to Friday; and 10am to 12 noon on Saturday



COROMANDEL.N.Z

866 8635

See meeting list for class times

Registered Builder PETER BURNE

Advise, Plan, Repair, Replace, Build

House alterations, jibbing, roofs, spouting, weatherboards, windows, decks, fences, pergolas, retaining walls, almost anything.

Ph 022 428 9932

NEW LISTING



Coromandel - The Ultimate Beach Home

This Queenslander style beach home set on 809m2 ticks all the boxes. Excellent location, 5 mins drive from Coromandel Township, 1 min to Oamaru Bay boat ramp. Move in relax and enjoy what this property has to offer. Consisting of 4 Bedrooms, 2 lounges, 2 bathrooms, kitchen, open plan dining living area, study/office, large laundry. All this with an abundance of space for family and friends. There is a single garage, glass house and studio.

For Sale \$735,000
www.harcourts.co.nz/CO1909

SECTION



Wyuna Bay - Views + Over 1/2 Acre

Located in a sought-after road only 3 mins drive from Coromandel Town and a 1 min walk to the beach this 2,384m2 section has harbour views to die for. Realistically priced to sell quickly. Resource & building consent with house plans available.

For Sale \$420,000
www.harcourts.co.nz/CO1908

SEA VIEWS



Coromandel - Front Porch Views

4 min drive to Coro Town. 3 bedroom wood home set on 2.5ha of bush. Outstanding location, views over the lush Coromandel coastline. Private and peaceful, this secluded hideaway is surrounded only by nature.

For Sale \$695,000
www.harcourts.co.nz/CO1899

BUSH BLOCKS



Colville—3 Titles—Buy One or All

\$839,000 for all or enquire for separate title prices. This stunning bush and pine block is just north of Colville. Peace, privacy, hunting at your doorstep and genuinely majestic views to die for.

For Sale \$839,000
www.harcourts.co.nz/CO3854

Free Appraisals
 Free Advice
 Open 7 Days

Talk to us About
 Getting Your Property

SOLD!

Fact: Every 10 minutes
 someone buys a
 property with Harcourts

SEA VIEWS



Colville - Off Grid & On Point...

This absolutely captivating Colville lifestyle block, 5 mins north of Colville comprises 27.55ha of native bush and pine and a substantial 4 bedroom, 3 bathroom home. There are spectacular views of Waikawau Bay and out to Cuvier Island, wonderful peace, seclusion and tranquillity. There is hunting, if desired, virtually at your doorstep, and stunning native flora and fauna surrounds you. Internet access available.

Price By Negotiation
www.harcourts.co.nz/CO3857

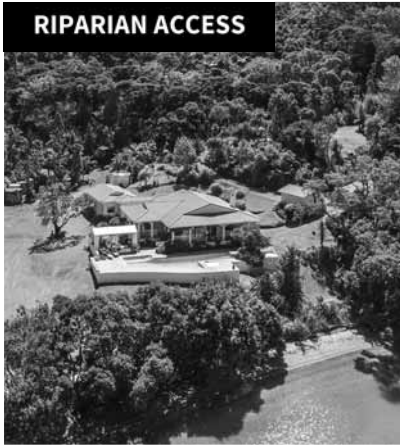


NZ's Most Trusted Real Estate Agency

2013, 2014, 2015, 2016, 2017, 2018 & 2019 (Readers Digest Annual Business Survey)



RIPARIAN ACCESS



Wyuna Bay - Wyuna Bay Wonderland

Absolute beachfront! Riparian access to 200m of sandy beach, a concrete high tide boat ramp and a legal mooring. Seeing is believing in the extraordinary reality of this unique Wyuna Bay estate, comprising 2 dwellings- one rented- plus a sleep out/ cabana, pool, 11 acres in manicured and landscaped grass, native plantings as well as some bush

Complete privacy, a wonderful tranquil ambience, at one with nature yet encapsulating luxurious living- this truly exceptional property, a few minutes from Coromandel Town but feeling like a million miles away, awaits the respectful stewardship of its next fortunate custodian.

For Sale \$2,600,000

www.harcourts.co.nz/CO1903

CLOSE TO BEACH



Te Kouma - A Treat in Te Kouma

Open plan kitchen/living, 3 bedrooms and two additional rooms to use as you please, this lovely home has all the space you've been looking for. Some water views and nicely situated for the sun. Double garage and room for the bigger boat at the front of the 1361m2 section.

For Sale \$791,000

www.harcourts.co.nz/CO1906

LIFESTYLE



Manaia - Live The Goodlife!

Live the dream on this 12.5-hectare old world bush clad lifestyle property. 1 dwelling plus 2 additional buildings. Located just 9km from Coromandel township and Te Kouma. This property is a must see, it has a whole lot more to offer, beautiful bush, sea views, and lots of possibilities..

For Sale \$799,000

www.harcourts.co.nz/CO1907

PORT CHARLES



COROMANDEL



COROMANDEL



Harcourts "With you all the way"



Caro
Sales
021 0291 5531



Raewyn
Sales
021 0201 9111



Dave
Sales
0274 918 420



Dayle
Sales Manager
0274 336 862



Anna
Office Assistant
07 866 8260

Colville Harbour Care

By Beth Pearsall

What's happening in Colville this winter

It's the middle of winter and we couldn't be busier in Colville.

Colville Harbour Care (CHC), a project run by the Colville Social Service Collective (CSSC), held two community tree planting days with 1600 trees planted by over 50 volunteers. All of the trees planted have been raised in the CHC nursery. We collect all of our seeds locally.

This means the plants we grow are adapted to thrive in this environment. This is called eco-sourcing. The nursery is aiming to raise another 20,000 trees for planting next season. If you would like to be part of the fun, we have a potting party at the CHC nursery on **20 July**. It's always a great way to spend time with like-minded people and do something good for the environment.

CSSC is hosting an "Introduction the Treaty of Waitangi" in Colville Hall on **19 July**. This is a wonderful opportunity to learn about the foundational document of New Zealand.

Workshop content includes:

- Context – factors that lead to the signing
- The Declaration of Independence
- Comparing and contrasting the Treaty texts
- Processes and effects of colonisation
- The claims settlement process



Tree planters

- Biculturalism and multiculturalism
- Personal and institutional issues in the workplace
- Setting goals towards bicultural competence

The Colville Store has increased the selection of organic groceries and the bulk section is full and thriving. Bring your own bottles and refill organic olive oil, soy sauce and plant-based washing up liquid and shampoo. Bringing your own bottles and buying in bulk is a great way to reduce your waste and save money.

Friday 19 July 9am: Te Tiriti o Waitangi workshop, Colville Hall \$20. To book contact Colville Social Service Collective (CSSC), phone (07) 866 6920, email cssc@colville.org.nz, or pop into CSSC.

Saturday 20 July 10am-2pm: Potting Party at CHC Nursery (Wharf Rd, Colville). Be involved in the future wellbeing of the Hauraki Gulf. Music, chai and lunch provided.

Follow us on Facebook – Colville Harbour Care

Lions News

By Lion Lyn

Greetings from the depths of winter, although today does not feel like it with 17 degrees of sunshine, and barely a cloud in sight! Our guys and gals have been very busy this month with loads of firewood being delivered, many more loads of rings taken to our storage space, and even more truckloads of logs for storage and splitting at a later date. Many, many thanks to the team from James Drainage, for trucks and digger, and the manpower with the expertise to do the job at hand. You have made short work of what would otherwise be a very daunting and laborious job for us. The amount now to be split and delivered should keep us working almost to the end of winter. A special mention must go to Mike from Pepper Tree, who I have been told is really mean on a chainsaw. Also thanks to Keith and his crew, Doug, and all of the helping hands on the day; thanks to all. Community pulling together makes for a better place for us all.

As mentioned last month we were inducting two new members at our dinner meeting. A very warm welcome to new Lions Mary and Paul, who have been involved with us for some months already but it is now official! Great to have more community-minded and fun people joining our ranks. May your Lions journey be pleasurable and rewarding (they also bring nice food on dinner night!). The dinner evening was, as usual, a great success, with a visit from Walter Russel who is the immediate past chairman of the Coromandel Rescue Helicopter Trust, which is based in Whitianga to service the whole of the peninsula. A great pleasure to have him answer all of our questions



and to reassure us that it is here to stay! He also spoke of the two new choppers, worth \$15,000,000 each and that they need to enlarge the existing hangars to allow safe storage. We also handed over a cheque for \$1,530.70 which was collected by donations outside our local Four Square at Easter weekend. Thanks to Lions John and Nigel for rattling the bucket for such a great cause. You never know when it may be needed for one of our own.

The evening ended with the Lion Rock passing to Lion Sue for putting her hand up for so many ongoing projects. The rock is now home as Sue is an artist and painted it for us several years ago. Thank you Lion Sue.

After a little twisting of stories and drawing of raffles we happily departed knowing we will do it all again next month on **Wednesday, 3 July**, which will also be our change of officers evening; but before then we have a business meeting 19 June. However there will be new numbers as of 3 July which will be President Lyn (07) 866 7722 (may go to answer phone but I will call back), Secretary Gordon (07) 866 2433, firewood Sue 07 211 9774 – this last number is a landline.

As always if there is a project that Lions may assist with, feel free to contact any one of us or come talk to us on Friday evening at the "Top Pub" as we run a raffle a little after 5pm.

Till next month, keep warm, keep smiling, keep safe.



Presentation of the cheque to the Rescue Helicopter Trust from the Coromandel Lions

SCOTT REVELL

BUILDING CONTRACTOR

- New Homes
- Renovations
- Additions \ Repairs
- Bathrooms
- Decks \ Fences \ Landscaping

Prompt Professional Service

srevell2010@hotmail.co.nz

027 861 6592

COROMANDEL

Coromandel Town Information Centre

By Sandra Wilson,
Manager, Coromandel Town
Information Centre



Another beautiful winter day as I write my article. A few more days and it will be the shortest day and then the daylight hours will gradually increase.

Enough about the weather; let's get down to business.

Would you like to save up to 50% off eateries, activities and much more? Pop into the Info Centre and talk to us about the Entertainment books we have for sale. They cover the Waikato and Auckland areas, and there are digital versions available for three other parts of New Zealand. So if you have family or friends coming to stay, let them know, as they can make huge savings also. Or if you are travelling in the wider area you too could save on a coffee, lunch, or accommodation. This is a fundraiser for the Information Centre. You can also go online: www.entertainmentbook.co.nz/orderbooks/9g60712

Thank you to Glen and Tania from the Work Co-op for providing the muscle and transport with our move to our new storeroom. They certainly made the process so much easier. Also thanks to Shirley for providing a temporary storage solution for us.

During winter our hours of operation are 10.00am-3.00pm every day, through September. We are closed for ½ an hour each day from 12.30 – 1.00pm.

We will be having a white elephant/garage sale at the Coromandel Area School Hall on **Saturday 26 October** (Labour weekend), from 9.00am – 1.00pm. So think of us if you are having a clear-out. No clothing, but everything else considered, so just give us a ring if you have items to donate.

Keep warm and talk to you in August.



Daffodils picked for the 2018 Daffodil Day

Daffodil Day 2019

Daffodil Day 2019 is on **Friday 30 August**. Marie will be manning her sausage sizzle stall in front of the BNZ with Jodie as chief cook. I will be out front of Coromandel Pharmacy with a stall, so please make note of day and date as we'd love to see you.

This is also my final year as coordinator for Coromandel Town as I do feel it is time to hand the reins over to a younger, enthusiastic organiser... so if you are interested in taking over from me please give me a ring. It would be nice to have you aboard for this year's fundraiser. Marie is also thinking she may retire as well, so we are seriously looking for replacements. Cheers, Robyn Dudson.

COROMANDEL PLUMBING

(1986) LTD

1490 Tiki Road, Coromandel

CRAIG DUDSON

Phone/Fax 866 8814
027 482 1291



Plumbing, Drainlaying and Gasfitting

Natural Medical Centre

By Ann Kerr-Bell



Are you sick and tired of feeling an awful sense of discomfort after you have eaten? Whether it is immediate or two hours after, that gnawing burn or even chest pain can negate the joy of what should be a pleasurable occasion. Indigestion, reflux or heartburn is preventable.

Eating food is essential. But you need to do it right. Because if it goes bad at the top, chances are, the domino effect will be negative all the way through to the bottom, as in bowel motion bottom. Prevention can be simple.

1) Choose real food – Food that has no preservatives, flavourings, colorings, sprays, bad fats or sugars.

2) Include bitter food. Via stimulation of the taste buds, bitter foods and herbs send messages to the brain, then to the digestive tract, to get ready for food. Without bitters, production of the essential hydrochloric acid (HCL) production in your stomach, and enzymes in the stomach and pancreas will not occur sufficiently. Proteins such as your juicy steak require a lot of HCL production to quickly break it down into smaller particles for eventual absorption of the necessary amino acids. Without this, foods linger longer than they should, putrify, ferment and cause indigestion.

3) Chew really well. It is necessary, as chewing begins the release of lipase, the enzyme that starts to break down carbohydrates in the mouth.

Carbohydrate digestion continues in the small intestine, with the production and release of pancreatic enzymes. Bile production is necessary for the breakdown of fats.

4) Avoid meal-time drinks. This dilutes your digestive enzymes. Wait at least half an hour before having that water, or wine, or, better still, drink herbal bitters before meals to encourage the production of all those great digestive juices

5) Relax. Eating on the run or when stressed blocks digestive function.

6) Love your liver. A clean and efficient liver only occurs via a diet that is clean and nutritious. How's yours?

7) Minerals. Essential for the prevention of any form of indigestion.

We know for instance that fat intolerance occurs due to a lack of sodium phosphate. Gastric acidity occurs also, not eating enough foods to provide your digestive cells this essential mineral. Gastric acidity and gout also can occur, as there is incomplete breakdown and elimination of metabolic acid waste. Are you deficient in the three other minerals necessary for the prevention of low stomach acid, inflammation, bloating, spasms, pain and cramping after eating? Know your mineral status. Complete the questionnaire. www.activeelements.com, username: 259077, password: 579819.

More Good News

Failure to thrive – 12-month-old boy. A hurried entry into the world meant this little man was on essential life-saving medication, however he was on it for too long, creating a very damaged gastrointestinal tract. Even at 12 months old he was still not sleeping, unsettled and was underweight.

After just two months on my programme, his mum says he is so relieved and the family are very grateful.

Bloating/reflux/menopause – Normal hormone production and function need healthy food too. This 48-year-old lady was amazed at how quickly and well she felt after working with her personalised treatment plan. No more night sweat, constant bloating, nor painful heartburn. Her weight, skin and hormone profile have all improved, as has her energy and joy of life.

As a master of good nutrition and common sense medicine, I'm happy to help you too.

Ann Kerr-Bell 021 046 1647

Natural Medical Centre

The natural alternative for all your health requirements

At Tiki House,
Coromandel.

For appointments,
phone or text: 021 046 1647
or email: annk-b@ps.gen.nz
www.naturalmedicalcentre.co.nz

Ann Kerr-Bell

B.Hlth.Sc. (Comp.Med.)
Adv.Dip.Naturopathy
Adv.Dip.Med.Herb. MNZAMH
Naturopath
Medical Herbalist
Nutritionist
Massage Therapist

Combined Clubs Of Coromandel THE CLUB

Coromandel Bowling Club

By Cherrie Rokela

Our AGM was held on Saturday 8 June, with good attendance.

Current President Linda Wright has stepped down after three years in that role.

A big thank you to Linda for her dedication and enthusiasm. The club has grown during this time, and continues to be the little “social” hub of the community.

Our new president is Jim Dicks, who I’m sure will continue to do an admirable job.

Graeme Goss was presented with a Life Membership award, in recognition of his valuable and tireless work in various roles for the club over the past years.

Our greens, of course, are closed over winter for maintenance. Some members continue to bowl in tournaments at Mercury Bay club in Whitianga on their astro-turf greens.

Quiz nights continue to be popular every second Wednesday through the winter months – get a team of four together, or join in with others.

Friday night social get togethers are well patronised – a good way to catch up for a drink with others in our warm club rooms.

Safe travels to those of us who are getting away to warmer climates at this time.

Coromandel RSA

By Pat Williams

Good to welcome home Stoney, our president, and wife Margaret from their sojourn to the mainland, full of vim and vigour!

Attendance on Club nights is steady in spite of it being winter; I might add, the Club rooms are very warm. We have had visitors from the Morrinsville RSA and the Howick RSA Fishing Club. They come every year and are due again shortly.

All seem to enjoy our facilities just as we enjoy their company.

On **20 July** we are having a Mid Winter RSA Members Dinner. Numbers are limited to 40 so get your names in early. Cost is \$10 plus BYO veggies, salad or a dessert. Contact Kevin on 027 476 3665 or Lyn on 021 984 447 before 16 July.

Last month I asked for volunteers to give a hand on Anzac and Armistice days. This month we are asking if any members would like to go on the Courtesy Van roster! The more names on the roster means it would only be one afternoon, 3.30pm to 7pm, in maybe six or seven weeks.

Here is a little hint! Are you an active member, the kind that would be missed, or are you just contented that your name is on the list? Do you take an active part to help the Club along, or are you just satisfied to be a member that just belongs?

These are just two paragraphs taken from a poem I have had for years.

I struggle every month to think up what to put in this column. At our last committee meeting someone suggested a funny.

Here is a condensed version of one.

Differences between grandfathers and grandmothers – A grandad who worked away from home all week made a special effort in the weekend to bond with his seven-year-old granddaughter by taking her for a Sunday drive. One Sunday he was laid low with the man flu so grandma took the seven year old for the Sunday outing. On their return the little girl rushed upstairs to see grandad. He enquired how the trip went. Well, said the little girl, do you know what? We didn’t see a single stupid bastard, dozy twit, rat or bloody idiot anywhere we went today! (Note: some words had to be toned down). If this is how grandads swear in front of the little ones, who can blame the kids!

That’s it for now. Keep warm and stay safe.

Quote for the month: “Good and quickly seldom meet.”



“Mosaic face” by Jo Dixey
– tutor for our upcoming workshop

Patchwork and Quilters

By Beverley Mayhead

Our Midwinter Christmas Dinner was held on Sunday 16 June at the Combined Clubs of Coromandel, and what a feast! We decorated the room in true Christmas style with decorations, lights and of course a tree and yes, Christmas cake made by Robyn. The colour scheme for this year was red. It was a lovely, relaxed and enjoyable evening. Partners are invited to this event as they are a large part of what we do.

We had 10 entries in our secret squirrel President’s Challenge. Heaps of variety for patchwork wearable art. There are two parts to this annual event: the first is to guess who made each entry and the second is ballot box judging. This gives us our winners. Partners are not obliged to vote for their own partner’s creation (in all fairness) :) This year our winners are: 1st Robyn Dudson with a decorated bra in true rugby supporter style and a rugby ball necklace, 2nd equal was Raewyn Penrose who made a felt necklace and Ursula Walsh who decorated a T-shirt, 3rd was Ursula again with a decorated skirt. Thank you to all members who made an effort in this quest, and thank you to all of us who turned up to vote. Also on display was some of our completed Christmas decorations made so far this year.

Our small project for June was a “thread roll case” for keeping our cottons tidy, easily viewed and easy to carry. It just folds up like a small case/bag. Our project for July is bangles made of fabric, beads and wire. Just lovely!

August is very exciting. We have a tutor named Jo Dixey coming for a two-day workshop. Jo is well known for stitching “people” and our workshop will be fabric mosaic done by hand. Faces, flowers, birds and landscapes are all ideal for this. The date is **12 and 13 August** and we do have spaces available for non-members. If you are interested in joining us please contact Jill Wilson 021 295 0770. Bring along a photo or picture to mosaic and small scraps of fabric. It will be both amazing and fun!

So, that is all for this month and we are now halfway through 2019.

Spirit of Adventure Trust – Te Waka Hiringa Tangata partnership with Tuia 250

Spirit of New Zealand will sail around the country as part of the Tuia 250 Flotilla for two months at the end of the year, with rotating crews that will include diverse groups of young people from all over the country. In most ports, visitors will be invited on board to tour the ship.

Spirit of Adventure Trust CEO Dean Lawrence says, “The Spirit team is very much looking forward to this epic voyage and to sharing our basket of knowledge with the young people who sail with us and the communities we visit.”

OUR COROMANDEL



News from Thames-Coromandel District Council

July 2019

The Coromandel Bizarre Trust

The Coromandel-Colville Community Board sincerely thanks the former Coromandel Senior Settlement Trust, and more recently the Coromandel Bizarre Trust for the enormous amount of support given to the communities of this area through their very generous donation programme.



David Keeves, Coromandel Senior Settlement Trust handing over the \$200,000 grant to Council's Project Manager, Andrew Boden.

DOG REGISTRATION RENEWALS

DUE 31 JULY

If you have a dog, it's time to renew its registration for 2019/20.

You have until 31 July to renew before the late penalty fee applies from 1 August.

You can register online at tcdc.govt.nz/renewdog

In particular the Coromandel Senior Settlement Trust has provided a significant amount of funding toward the refurbishment of the Coromandel Citizens Hall, initially with a \$25,000 grant toward the upgrade of the ablution block and more recently through the Bizarre Trust a grant of \$200,000 toward the refurbishment of the Hall itself.

The Community Board acknowledges the contribution the trustees of both these Trusts have made to the community, along with the huge amount of voluntary support that came with them. The recent decision to dissolve the Bizarre Trust and divest the responsibility of the town icon known as the 'Bizarre' to the Coromandel Independent Living Trust is seen as a very strategic decision and the Community Board thanks CILT for taking this on to ensure a much loved service is continued for our town.

COROMANDEL CITIZENS HALL

Progress is tracking along at the Coromandel Citizens Hall. The new matai flooring is currently being laid and it is hoped it will be completed by the end of June. Both porches have now been framed and braced. New double doors have been installed at both porches. Removal of the annex is expected to be undertaken during July. For more information visit the project page tcdc.govt.nz/corohallproject



Pottery Lane extension

The extension of Pottery Lane extension project is still in train. We'll be talking to property owners once we have a new Council solicitor on board. Residents are aware of the project, which involves extending Pottery Lane to reduce commercial traffic on Kapanga Road (Coromandel's main street).



Seeking businesses and volunteer groups for the 2019 Business and Careers Expo

Last year we had almost 1000 people from across the Coromandel – from school students to business owners – at our Business and Careers Expo.

And this year we'd love to have the same amazing turn-out – which is why we're now seeking new enthusiastic local businesses and volunteer organisations to showcase the number of opportunities available on the Coromandel – to school leavers, job seekers, university graduates and interns.

The 2019 Business and Careers Expo will be held on Thursday 8 August at the Thames Civic Centre this year from 9am-2.30pm.

"This is a chance to educate people about job opportunities and lifestyle pursuits that happen on the Coromandel," says Thames-Coromandel District Mayor Sandra Goudie.

Registration is a must. So if you are interested in exhibiting, participating or sponsoring this event, please contact:

Marlene Perry:
marlene.perry@tcdc.govt.nz
or call: 027 703 0263

GET READY FOR LOCAL ELECTIONS

Nominations for Mayor, Councillors and Community Board members open on 19 July and close 16 August. If you're considering running as a candidate, now's the time to prepare your nomination. To help, we're running some candidate information sessions.

Sunday, 14 July – Coromandel Town Council Office, 355 Kapanga Road 10am-12noon

Voting packs are posted from 20 September and voting closes at 12noon on 12 October. Elections for Waikato Regional Council are being held at the same time.

Make sure you're registered to vote.
tcdc.govt.nz/elections

VOTE 2019
LOCAL ELECTIONS



Get our free eNewsletters!
www.tcdc.govt.nz/subscribe



www.facebook.com/ThamesCoromandelDistrictCouncil

www.coromandel.govt.nz

customer.services@tcdc.govt.nz
Private Bag, 515 Mackay St, Thames
Phone: 07 868 0200

Mana

Written by Jade Ferrière

The word, sacred, has many different connotations. To us, it represents a human experience that evokes reverence, awe, and ultimate respect – often in recognition of how life is so intricately woven together. For us, the relationship of all living things, each to the other, and, to the world which sustains us, is sacred.

In every moment there is something sacred present, from the life-giving air that we breathe, to the way our bodies work – we are surrounded by the miraculous and extraordinary. While self-help gurus tell us that we should be in a continual state of astonishment, the reality is that it isn't always possible to experience life as mind-blowing or particularly fabulous.

While our connection with the sacred is not something that must be, or can be, front and center all the time, there are certain things that we can do to encourage it to appear—to invite awe into our everyday life. And, since most of us want to feel a sense of wonder at being alive and grateful for all that we experience, it is worth laying the internal groundwork from which awe can grow.

We asked our team how they welcome the sacred into everyday life and these were a few of their thoughts.

Be Present: when we are attentive to what is happening in the moment we can notice the little things along the way. Often when we are caught up in our thoughts we miss the rainbows on the horizon or the smile of the stranger walking past in the street. We need to be here and now to experience life's wonder-full moments.

Be Grateful: when we look for reasons to be grateful, even when we are suffering, we begin to appreciate the understated qualities of life which often link the mundane to the magical.

Be Curious: when we are interested in the world around us we are filled with questions – it takes curiosity to notice things outside of the familiar – curiosity helps us to open to new experiences, become more observant and be adventurous – which naturally awakens awareness of the sacred.

Can we hold onto the sacred in the midst of the regular, stressful world of living—stay tethered to what really matters when doing what needs to be done? That is our quest, and sometimes we need reminding – whether it's the birth of a child, or a wedding or a funeral, or walking through the bush – we continue to keep coming home, to that sense of knowing that this really matters, and deserves honoring.

Museum News

By Raewyn McKinney

At our recent AGM, the new committee of the Coromandel School of Mines & Historical Society Inc was confirmed: President – Judy Bronlund, Vice-President & Treasurer – Karen Marshall, Secretary – Raewyn McKinney. Committee members: Jennie James, Val Macdonald, David Phillip, Jim Sharp.

We are sorry to note that Carlene Carmichael is unable to continue as auditor to the society. We thank her for her commitment over the last twelve years and send her best wishes for the future.

Subscriptions to the Society remain at \$15 per person per year and are now due. These can be paid to any committee member, posted or paid direct to the bank account. Membership of the Society includes three free visits to the museum per year, plus a copy of the very informative monthly newsletter.

A recent visitor to the museum, Sue Yates, brought in a copy of the below photo, which must be a classic in any sense of the word.

Sue advises: "The year is 1960, and the mains electricity has arrived in Coromandel. To celebrate this event the local talent organized a concert in the Town Hall. One of the items was a delightful production of *Swan Lake*."

Sue has identified the following "ballerinas" in the photo: From left to right; Arthur Holten (garagist), Jean Yates (ballet teacher), Bligh Pickering (school-teacher), unknown, Alec Yates (dentist), unknown, Jack Barry (sawmiller) and Ernie Marmont (occupation unknown). If anyone has



any further information about the event, or the dancers, please contact one of the committee members, or drop your information into the museum. We would love to fill in the gaps.

The arrival of mains electricity was obviously an exciting time for the town, but Coromandel had been supplied with electricity for many years by that time, as this article from *In Search of the Rainbow* illustrates:

"Power

By Kaye Denize and Nigel Strongman

As Jack Strongman wended his way home late at night in the early 1940s, he would often think how nice it would be to have street lights in the town. It would certainly make one's journey easier in the dark.

Jack was a dab hand with motors of all kinds, but had no experience in producing electricity. So he experimented, first with a windmill, he then added a diesel motor.

There obviously being a need for a better power supply, Jack decided to build a power station. This was built in 1944, using secondhand iron which is still on the building in 2002. Jack Campbell, an Auckland Technical Institute tutor, helped source the necessary generators and other machinery.

The first gas-driven engine, a Rathbun Jones, came from Framers' Fertiliser Works at Onehunga. A gas producer for this machine was finally found at Ngaruawahia's power station. The gas was produced from coal, and with much trial and error, Jack managed to achieve an output of 400/230 volts and 50 cycles, the same as we have from the national grid in 2002. Power poles were milled from the Kaimarama area, and transported on a Bedford truck with its cab removed. Power at this time was only produced between 5pm and 8pm. Strongman Power Supply was officially opened by James Thorne MP on 20 July 1946. Six months later, a Leyland diesel engine was purchased from Auckland Transport and another generator from Dominion Breweries. The power was now on from 6am to 9am, again at midday for a while, then from 4pm to 11pm. By 1948, the power supply had reached as far as the Coromandel Hospital, and was running 24 hours a day."

The museum is now closed until Labour Weekend

Mana

Mana Retreat Centre, Coromandel New Zealand

retreats
workshops
events

Book Online - manaretreat.com

JULY

CLOSED FOR MAINTENANCE

Please be patient with us if you are trying to get in touch, things will be a little slow over the winter...

9-11 AUG

Yoga Retreat w/ Clare Etherton and Jessica Devi

15-18 AUG

Never Turn Away w/ Mariska Swartz and Fiona Liu

23-31 AUG

Healing & Renewal Retreat w/ Saskia Davies - MyChi Wellness

**30 AUG -
1 SEP**

The Wisdom of the Moving Body, a 5Rhythms Dance
Yoga Retreat w/ Sacha Paddy & Neal Ghoshal

Coromandel Budget Advisory Service

By Caroline Dunn

Budget Advice

Hi all, hopefully everyone is keeping warm as we make our way through the cooler months. The shortest day has been and gone so here's to longer days coming our way.

What tips and tricks do you have to save money? Favourite winter warmer recipes using produce that is in season? Join our Facebook page "Coromandel Budget Advisory Services" and share your tips and tricks with others.

If you want some help with your budget, come on into Tiki House and make an appointment with one of our mentors.

Why would you need us?

- Do you have debts that need to be paid, perhaps they're overdue?
- Need help with creditors?
- Would you like to have more control of your financial situation?

What can we offer you...

- Advocacy with creditors such as power and phone companies, finance companies and other lending organisations.
- We work with you to create a realistic budget.
- Foodbank access whilst dealing with debts.

To make an appointment come and see us at our office in Tiki House, located opposite the BP, or call us on (07) 866 8351.

Foodbank

If you need a food parcel, requests need to be in at the Budget Office strictly by 12.30pm on Tuesday. Food parcels must be collected at 2.30pm on Wednesday.

Remember to bring your own bags/boxes if you are collecting a food parcel.

Please keep donating any food items and excess garden produce. All clean, resealable jars and containers and reusable bags are also gratefully accepted by us on our mission to become single-use plastic-free.

Community Garden

We would like to say welcome to our new volunteers at the garden. It is great to have more people popping in to join us. If you would like to help out by joining our volunteers, please come down on a Wednesday morning between 9am-11am and have a chat with Brooke.

The garden is always in need of plants, seeds, lawn clippings and mulch. If you have any excess of these, you can drop off at the garden or send us a message via our Facebook page.

Winter Warmer Recipe – Hua Whenua (Vegetable Soup)

Shared from tuigarden.co.nz

4 litres vegetable stock

Salt

Choose from the following: ½ cup split red lentils, pasta (small shapes), rice, barley or soup mix

Parsley – large bunch chopped and added just before serving

Fresh vegetables (cut into small pieces):

- Onion or leek
- Celery
- Carrots d
- Potato
- Pumpkin
- Kumara
- Spinach/silverbeet
- Other seasonal vegetables as available

Firstly, heat stock so vegetables can be added to hot stock. Once boiling, reduce to simmer and add lentils/rice/pasta – whichever is being used.

Wash and prepare the vegetables: Onion: peel and dice. Celery: cut into thin slices, include any leaves. Root vegetables: peel and dice small or grate. Spinach/silverbeet: thinly slice stalks and add with vegetables, leaves shredded and added at end of cooking time.

Add vegetables to pot as they are prepared.

Bring to boil, then reduce to simmer until vegetables are tender (approx. 25-30mins). Add more stock or boiling water if more liquid is required. Add salt to taste. Flavour will improve with longer cooking time (do not boil hard, a continuous rolling simmer is best here). When vegetables are cooked add shredded greens, if using, and cook for five more minutes.

Add chopped parsley before serving.



SeniorNet Coromandel

By Loes Beaver

SeniorNet will have held our AGM when you read this article. We are working hard to keep our members informed about what SeniorNet is all about. We have had another new member join during the month. Tom takes queries and questions at the Monday afternoon sessions.

If you would like to be assisted with any of your IT equipment just let us know. Bring along your smart phone, iPad, or laptop and we will help you set up programmes and extend your computer knowledge. We are here to help whenever we can, so just get in touch with me or come along to one of our sessions. Our subscriptions for the new year are now due.

Contact Loes (07) 866 8053

**Coromandel
Christmas Parade**
Saturday 7 December,
3.00pm
Check out next month's
Chronicle for more details.

Everyone knows the best place to go fishing is near a mussel farm. Please follow these guidelines to keep everyone safe.

- ↔ **Keep 30 meters** from working mussel barges at all times
- ⚙️ **Don't tie-up** to a line being worked on
- 🪝 **Never cast your line** towards a mussel barge – farmers have been injured from flying hooks and sinkers
- ⚓ **No Anchors.** Tie-on to a longline buoy or use approved mooring hooks
- 🚤 **Minimise** your speed and wake
- 🚢 **Never drive across** the lines



www.coromfa.co.nz

Rangatahi

CELEBRATING OUR CHILDREN

Coromandel Area School

By Jamie Rose Leckie

COROMANDEL AREA SCHOOL



Where has this year gone?

I cannot believe that we are nearing the end of Term

2. We have had a full on term with three netball teams travelling to Whitianga every Wednesday night, senior students gaining their dive certificates, sports exchange, professional development and training for teachers, ukulele group performances at Phoenix House and so much more.

Cross Country 2019

The Cross Country was a successful day with Colville School, Te Rerenga School and Coromandel Community Preschool joining us for the day. A huge thank you to the Coromandel Golf Club for the use of their facilities for the day. Also a big thank you to all of the amazing parents and families who came along as helpers and supporters. Finally, a huge thank you to our Sports Coordinator Geoff and our physical education Teacher Kelly for organising the day. Many hours of planning went towards making this day successful. The weather was beautiful; we couldn't have asked for a better day!

2019 CAS only cross country results

Boy and girl placings

7 & under

1st: Taine Henson, Quinn Mclean
2nd: Elijah Riri, Zianna Fenton
3rd: Toby Mclean, Savannah Bull

Age 8 & 9

1st: Cooper Sturgeon, Sierra Walls
2nd: Tai Manawa Simmonds-Haynes, Tasman Williams
3rd: Caleb Mclean, Nuriya Kirsch

10 & 11

1st: Cole Hopoi, Kendyl Short
2nd: Taimana Ngamane-Mokomoko, Stella Barr Mclean
3rd: Kyle Shaw, Ririana Potae

12 & 13

1st: Blake Evans, Charlotte Kite
2nd: Carter Hopoi, Madison Grace-Spragg
3rd: Ryan Crow, Tyler Henson

14 & 15

1st: Shaun Johnson, Ella Hallam-Doole
2nd: Ihaka Harper-Dent, Kylah Berghan
3rd: Summer O'Neil

16, 17 & 18

1st: Kalani Hallam-Doole, Brooke Teklenburg
2nd: Tyler Hallam-Doole, Alex Sowerby
3rd: Matthew Christensen

World Challenge

By Toni

By time you read this we will already be winging our way to India! Our students have planned their itinerary and once we arrive, will oversee our accommodation and travel arrangements and manage the budget. When asked what they hoped to gain from this experience, these were their answers.

"I would like to gain confidence and independence."

"To gain experience in volunteering and create a positive impact in Indian communities, whilst also serving as a role model to others at Coromandel Area School."

"To see the contrasts between our countries."



World Challenge Group: Emily James, Reef Townsend, Mischa McCauley, Taleisha Dawson, Alex Sowerby. (Also travelling but not pictured: Emma O'Brien, Gracey Robbins, Nakita Marx and teachers Toni Sinclair and Kelly Oldridge)

"It is going to be an eye-opener and will get me out of my comfort zone."

"I am looking to gain knowledge and a wider understanding of not only myself and the things I can achieve but also an understanding of other cultures and religions."

It is phenomenal that we can offer this opportunity to our students and want to really acknowledge the support we received from the community. You have helped make these aspirations a reality!

Keep a close eye on our school website and Facebook page for updates.

Breakfast Club

Breakfast Club has been a huge success. Thank you to our amazing volunteers who run it and to the people who have donated food. We still need donations of Milo, bread and sugar as we have plenty of spreads. The students really appreciate a warm piece of toast and a Milo to fill their tummies and start their day.

Enjoy the holidays and we will see you back here for another exciting term.

Coromandel Area School Board of Trustees' Election

By Robin Münch, Returning Officer

Declaration of Parent and Staff Election Results

Parent Representative Votes: Ashby, Jean 25; Galvin, Anna 24; Hide-Bayne, Deborah 30; Kirsch, Daniel 36; Morgan, Abby 31; Swindlehurst, Claire 44; Invalid votes 4.

I hereby declare the following duly elected: Jean Ashby, Deborah Hide-Bayne, Daniel Kirsch, Abby Morgan, Claire Swindlehurst.

Staff Representative Votes: Leckie, Jamie-Rose 5; Oldridge, Kelly 20; Storey, Yvette 4; Invalid votes 1.

I hereby declare Kelly Oldridge duly elected.

Chartered Accountants

The Hauraki Taxation Service Limited

- For out of town independent accounting advice
- Established 1982
- Approved agents for Inland Revenue Department
- Offices in Coromandel Town & Thames

myob | BankLink



CASHMANAGER™ Smart Accounting Software
BY ACCOMPLISH

95 Kapanga Road, Coromandel
Ph/Fax: 07 866-8660
Em: coro@haurakitaxation.co.nz



Driving Creek

Coromandel - New Zealand

Rail tours

At the following times until 30 September:

10.15am, 11.30am, 12.45pm,
2pm, 3.15pm and 4.30pm

(please ensure that you arrive
20 mins prior to departure time)

Bookings advisable

Phone 07 866 8703 or 0800 DC RAIL
Email: bookings@dcrail.nz www.dcrail.nz
380 Driving Creek Road, Coromandel 3506

Kiwi Can

Firstly we would like to thank all those wonderful parents, grandparents and caregivers that attended our Open Day back in May. It was lovely to see so many of you supporting your tamariki.

We would like to welcome Jayden Pakau to our team. Jayden is an ex student of the Coromandel Area School and Te Wharekura o Manaia and has been employed as our Kiwi Can Reliever. So if you see him in the playground, do say hi.

Our tamariki have been working super hard this term learning about Resilience and have been taking part in some awesome lesson activities around our sub modules of Understanding Emotions, Self Control/Self Discipline and Dealing with Challenges. Our students now know a number of coping strategies they can use when faced with certain problems.

Term 2 is flying by so quickly the end of this term is only around the corner.

We hope you all have a wonderful safe time over the holidays.

Ka kite ano from the Kiwi Can team.



Steiner Playgroup

The Playgroup has started and is welcoming new children and parents.

Our venue is the Presbyterian Church hall, 1426 Rings Road, Mondays 9.30am-12.30pm. Please bring a piece of fruit and \$5 or more koha.

For full Steiner article see pg 6.

For more details contact Angela 021 255 0399

Coromandel Youth Group at Hauraki House

Last month we were deeply saddened by the passing of our long serving and valued staff member, Nicky Johnston. Nicky put heart and soul into Youth Group and keeping youth busy and safe. She became a mother figure to many. We are grateful for the generous donations to Youth Group in lieu of flowers. Thank you to Jack Little and co. for installing a new seat, in gratitude of Nicky's service to Coromandel youth. It's perfectly positioned to watch over children in the park at the Hauraki Reserve.

Term time opening hours: Sunday 1- 4pm, Tuesday, Thursday and Friday 3-5pm, Friday Night Movies 6-9pm (for years 6-9). To help with running costs please make a gold coin donation; every little bit helps us to stay open!

July School Holiday Hours: Monday – Thursday 11am-4pm, Friday Night 6-9pm (for years 6-9), Sunday 1-4pm, holiday entry is \$2.

All children must be signed in with a staff member on arrival.

Coromandel Youth Group is for all children aged 5-15yrs. Just fill out a membership form for each child attending. For more information call in at the Youth Rooms, Hauraki House or telephone us on (07) 866 7061.

Along with the kind donations received, thank you to the funders who make Youth Group possible: Lottery Waikato, COGS, Trust Waikato and The "Bizarre" Charitable Trust



Mō tātou o Hauraki
Affordable medical & wellness
services for everyone in our community

We are
taking new
enrolments
now!!

PHONE us on
07 866 8084

Clinic Fees

GP	NP
Under 18s - FREE *	Under 18s - FREE *
18-65 years - \$17.50	18-65 years - \$15.00
65 + years - \$10.00	65 + years - \$10.00

FREE *	NURSE
Under-25s sexual health checks	Under 18s - FREE 18 + years - \$10.00

*clinic fees for enrolled patients

OPEN: Mon - Fri:
8.30am - 5pm

FREE Flu vaccinations



for all *enrolled clients* who are pregnant; 65 years and over; have longterm health conditions such as severe asthma, cancer and diabetes; and for children four years and under who have a history of respiratory illness
(Other - enrolled: \$20; unregistered \$40)

Foot Clinic: Ruth Wells
Thursday - July 18, Aug 8,29



225 Kapanga Road, Coromandel 3506
Ph (inc a/h): 07 866 8084
Email: coromandel@korowai.co.nz
www.korowai.co.nz

Arts

Coromandel Arts Tour

By Kaye Anderson

Greg Taylor

"I make signs, mostly for myself." At the backdoor it's "Shoes off, please" and on the veranda he is reminded that "Before you judge anyone, make sure you're perfect". Good advice for visitors too.

But that's not all Greg Taylor makes. His current project is a dining table made from swamp kauri pulled out of the valley below his house. A bench from the same log is veined amber and black, clear proof of its origins. He also makes meditation stools, perfect for anyone with back problems. He watches TV from one himself. He does commissions too, like fitting out the Tangiaro Kiwi Retreat with kitchen and bathroom benches, bar stools and Cape Cod chairs.

"Whatever I do, I try to do it all from my heart, with love and passion," Greg says. He's a woodsman who comes from a wood family in Tokoroa. His father was a bushman and a carpenter, and when Greg came to Colville that's what he did: logged timber and made furniture. It's not surprising that he can look at a slab of kauri or rimu and let it speak to him about what can be created from it.

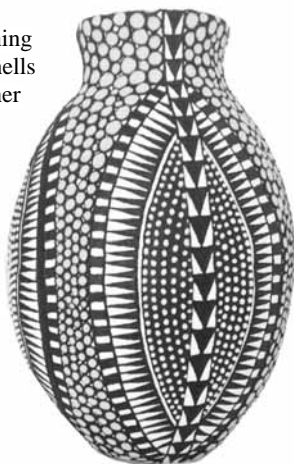
You can visit Greg at his workshop and studio on the main road not far south of Colville or call him for an appointment on (07) 866 6846.

Caitlin Moloney

As a child Caitlin collected things, anything beautiful like beads, jewellery, glitter, shells and scraps of fabric. Her mother called her "the depositor" because she made little piles around the house in readiness for her next project.

A few years ago making beads from clay took Caitlin back to playing in her happy place, to being a kid again. She had made ceramic tiles for seven years, but now the apprenticeship was over and she could begin to create works of art. Her wall-sized necklaces have wowed gallery viewers and her large winged pots have drawn international praise.

The ideas come intuitively, influenced by a compulsion to do patterns and the beauty of the natural environment. She says initially her creativity didn't come easily, but now it's an endless flow of ideas and keeping up with the momentum. In the future she plans to make more one-off, high-end sculptural pieces. It's a long process from ideas and drawing to sculpting and firing the finished product. And her time is shared with Driving Creek Railway



where she is enthusiastically involved in making it once again a place where potters can learn and pass on knowledge and experience.

You can see Caitlin's work at www.caitlinmoloney.com or call her on (07) 866 7215 to make a time to visit her studio.

Petra Meyboden

"I think my mission in life is to inspire. I am gifted in this life with a talent for craft and plenty of energy to bring it alive. I am very fast with everything and I don't idle very often, but if it was not for my WWOOFers I could not do it all. They love staying with me because they are not only inspired by eating entirely from the garden and fruit trees, but they also see me teaching recorder, weaving on the loom, flax weaving on the beach, sewing my own clothes with the woven fabrics and milking the goats for cheese and yoghurt. We eat eggs from the chickens and they love to eat from the plates and bowls from the pottery. I love craft that is useful and this is my main focus with my pottery."

"Because pottery is my main income, I spend a lot of time in my studio. At the moment I am making orange squeezers and sauerkraut pots, ready for this winter's harvest of citrus and cabbages. Come and visit me there any time, especially now in winter until Christmas as I am very productive making all of the pots for next year."



Sauerkraut pots and orange squeezers waiting to be fired

Watch this space

By Gill Bacchus



A stimulating first workshop was attended by 10 people on 15 June. Sally Tennent-Brown and Fran Campbell led us in a large range of "freeing-up" activities which included using our whole arm to draw large shapes, charcoal drawing of objects and faces, and exploring the patterns you can make with different paint brushes. We even made our own paint-brushes out of discarded materials such as dried leaves, twigs and string and had fun painting with them.

This was an enjoyable first experience with the group for me. Having only dabbled with painting before, I was diffident about joining a group of more experienced artists, but I felt at ease and welcome and we had fun! It was so interesting to see the different ways that people drew the same things. In an exercise to draw portraits quickly I was surprised to find my drawings getting bigger and bolder. I came away encouraged and inspired and looking forward to trying different ideas.



WANT
NATIVE NURSERY & EDIBLES
WAITAIA RD, KUAOTUNU

A wide range of beautiful natives,
palms and fruit trees.

Potting mix, compost, mulch, chook manure.

Open Thursday- Sunday 8.30-4.30 or by phone appointment

Please phone Colin Hill 07 869 5910

Pastel Artists Coromandel

By Rosemarie Murphy

Pastel Artists in Coromandel meet every Tuesday morning from 9.00am to 12.00 noon in the Aero Club rooms on Tiki Road. This is a great way to learn about pastel painting with friendly, helpful people. Getting dusty every week improves our work with practice and Annette Bishop and Rosemarie Murphy have both achieved recognition this month with Annette winning 2nd prize and Rosemarie earning a merit in the Pastel Artists of New Zealand (PANZ) bimonthly competition. This is what the judge had to say about their work.

"Annette's painting has interesting rhythms running through it. I enjoy the counterpoint of the fluid vine against the strong diagonals of the building. Patterns of light and dark partner with the composition to bring your focus to the little bird at the bottom. Well handled use of medium to create numerous different textures.



Rocks in Waionu by Rosemarie Murphy

"Rosemarie's painting has nice use of texture to capture the feeling of rough rocks and moving water. Good use of quiet areas (darker, less detail) in the upper left and bottom of the painting to focus your eye on the action, and prevent giving you too much to look at. Lovely colour harmonies with blues and earth tones."

If you would like to try or just talk about pasteling come along and have a cuppa with us.

Phone Allan Beaver (07) 866 8053 or Rosemarie Murphy (07) 868 4859



Abandoned by Annette Bishop

Coromandel Art Group

By Wendy Moore

Barbara Von Seida opened up the first of our workshops this year. I was a bit concerned when sheeting went down on the floor, and buckets of water appeared. Then the big brushes were brought out.

We had been advised that Barbara liked to paint in a very flamboyant style. What followed was an education for me in how to loosen up and make bold strokes across the canvas. For those of us who painted usually in a more constrained way this was a challenge to begin with, but everyone got into the spirit of it after a while, and a most productive and satisfying day was had by all. I think we surprised ourselves, and looking back now I realise that sheeting on the floor was a really good idea!

Thank you Barbara, and thank you to The Bizarre Charitable Trust for the grant that made this happen.



Barbara at the workshop

Papa Aroha Engineering
Est. 1980 LIMITED

**Servicing Small Engines:
Ride-on Mowers
Quad bikes**



MIKE McCALL • 07 866 8469 • 027 223 7919
Email mikepapeng@gmail.com



BUILDING CENTRE

COROMANDEL TIMBER
PH: 866 8848

"We'll see you right"



GaiaDecorators
PAINTING HOMES
ACROSS THE COROMANDEL LIMITED

Mark Gaia 021 295 5532 | 07 866 7485
COROMANDEL | gaiadecorators@gmail.com
www.gaiadecorators.co.nz

Coromandel Players present

RADIO PLAY

The 1920s and 30s were the Golden Age of radio and during this time new forms of entertainment were created for the new medium including radio plays, mystery, adventure and detective serials.

Now it's your chance to relive this era. Cheer the hero, boo the villain and get ready as you may become the next star of the radio.

Laughter, fun and audience interaction guaranteed!

Hauraki House Theatre
Fri 12 July and Sat 13 July 7pm.

Tickets \$20 from Coromandel Town Information Centre. Includes a glass of wine and refreshments.

Dressing for the era is encouraged.



Environment

McGregor Bay Wetlands

By Carol Sutherland

Bird's eye view

At the time of writing the Wetland Society has not heard back from TCDC regarding the report as a result of the hydrological and hydraulic survey of the wetland and investigation into the Marine Area obligations. This undertaking resulted in McGregor Bay Wetland Reserve being taken out of the 10 year Reserves Review until it was completed. The report was due out in May. We do hope it comes out soon as so many locals voiced their desire to have this wetland protected during the review process.

In the meantime there was a working bee to put the rat traps together. Thirty rat boxes were produced in two hours. Good output when you get on and do the job with a focused team.

Some of you might have driven past the wetland but what is beyond the drainage ditch that restricts access to this public scenic reserve? So we thought an aerial photo would help to understand the small but locally significant wetland. Below is a photo looking southeast, with McGregor Bay to the right.

The public area of the wetland is approximately southeast of the drain that runs perpendicular to the bridge and can be distinguished by a row of



mangroves. The floodgate is on the west side of the bridge and that restricts natural tidal flow. The main drain runs alongside the road and captures much of the tide coming into the wetland. The spill from the 2014 drainage works can be seen to the left of the drain and resulted in a bund that restricts water flow into the wetland during the tide cycle. The vegetation on that raised surface harbours noxious weeds as they are above the seawater levels.

At the southern end there are more noxious weeds as the seawater no longer reaches that far.

So we look forward to TCDC completing their investigations on the myriad of issues facing this wetland.

Sunday 21 July 4:30pm is the Society's AGM and it will be held in the Aero Club rooms.

Ecologist Vanessa Wood will be speaking on the Baseline Study that was undertaken and will outline her findings. This will be followed by a shared meal and hopefully with the TCDC report out by then. There will no doubt be discussions as to the future of this public wetland.

Forest & Bird Upper Coromandel Branch



Forest & Bird
GIVING NATURE A VOICE

Challenges of Climate Change

By Alison Carter

Last month the Upper Coromandel Branch of Forest & Bird held their AGM, followed by an inspiring address from climate change expert Jeanette Fitzsimons on just why climate change is so hard.

More than 80 people filled the St John Ambulance Room to hear Jeanette speak on what we can do to face the daunting challenge of climate change. As she explained, combating climate change requires fundamental changes to our economic goals, our tax and monetary systems, the framework of capitalism and, hardest of all, to our values and image of ourselves.

It is understandable if it all seems too overwhelming. We ask ourselves where to begin and what can our efforts possibly achieve. By ourselves we can't do anything, and it is difficult to imagine what we can even do collectively to make a difference. For those of us who might be depressed by the sheer enormity of the task ahead of us, Jeanette was inspirational.

In her talk about moving from a growth economy to an economy of "Enough" she offered a way of thinking in which we can all play a part. She talked about aiming for a society which values quality over quantity. "A society that says, enough pollution, enough waste, enough corruption, enough

greed." A society where we can say, "I have enough now, the rest is for others or for nature."

We can all see clearly the need for energy conservation, the need to reduce dependency on fossil fuels, perhaps buying an electric car, and using solar power and other alternative energy sources, but some of the biggest contributors to climate change are less easy



Print by Mary Foreman up for auction

TREE WORK

Call 027 451 2224
or 07 866 8177

www.dynamictreecare.co.nz
Email: dynamictreecare@gmail.com





Moehau Environment Group

By Nat Munns

July MEG Winter Lecture

Our July lecture, "The Future of Food and Energy", will be presented by Dr Mike Joy. Mike is a Senior Lecturer in Ecology and Environmental Science at the Ecology group-Institute of Agriculture and Environment, Massey University, Palmerston North.

He researches and teaches freshwater ecology. See you at Pepper Tree Restaurant, 7pm on **Sunday 7 July**.

Weed of the Month - Elaeagnus

Elaeagnus is originally thought to be from Japan. It is a vigorous and dense evergreen shrub with a scrambling habit able to reach up to 20m. It has a tough suckering root stock, likes to invade well-lit or partially shaded sites and smothers all other plants to canopy height. It can also increase soil nutrient status, affecting which natives will grow there. Recognisable by its long arching stems (young stems are brown and scaly and older stems often have thorns), alternately arranged leaves that are silvery or brown scaly underneath and its small drooping clusters of whitish fragrant flowers (present March – May) followed by a reddish-orange fruit containing one ribbed seed. There are many methods to rid your property of Elaeagnus but it is extremely hard to kill! Check out the weedbusters.org.nz site for more information.

MEG Operations

The Waikawau Wetland operation continues with prefeeding and toxin application completed. Toxin removal will occur later in the month. More work occurring in our Port Charles Rat Attack block and some much needed track cutting on some of our stoat lines has been completed.

Have a great month everyone.

to recognise. Like what you put on when you get dressed in the morning. A recent BBC radio programme ran a story that stated that the garment industry generates a carbon footprint as big as air, land and sea transport put together. Clothes may be produced cheaply, but it's the planet that pays the price. Often cheap clothes are only worn a few times and thrown away.

Op shops and secondhand clothes shops, including designer clothes shops, have been around for a long time. Good for those struggling to clothe families and people looking for a bargain, they are also very popular with hip young people who want to look good without spending a fortune. Next time the urge to shop comes along, ask yourself if Enough is Enough and if you really need it, help cut carbon emissions by trying the local op shop first.

After the AGM Jane Foreman, a member of the local Forest & Bird committee, offered a print for auction by her late mother, the noted artist Mary Foreman. Mary was one of Coromandel's earliest and most active conservationists of the current era. Tickets are available at The Source, where you can view an image of the print.

By the way, if you are a Forest & Bird member and the recent cold snap has brought you some unwanted guests, the Thames Branch of Forest & Bird is offering members rat traps that retail at \$12 or more, for a heavily reduced \$4.

If you are interested in joining Forest & Bird go online to forestandbird.org.nz where you can easily enrol

Possums

By John Veysey

In the April issue of the Chronicle Moehau Environment Group (MEG) published that in their Paeroa block, the possum count was 35% and in their Knox block possum numbers were 46% (prior to their possum control operation in November and December).

MEG is an enviro-group paid to carry out possum control for DOC and WRC. A 5% reading will galvanise DOC and WRC into action. Readings as high as 20% were never allowed to happen before DOC and WRC gave this work to enviro-groups. Today the enviro-groups (of which there are 60 on the peninsula) are divided into the ones which spread poison and allow high possum numbers and those which trap their possums and keep constant control of numbers.

Nothing could be more disheartening than to diligently trap possums on your property, keeping numbers under control, only to have your neighbour has let his possum numbers expand to plague proportions. You have to put in an extra set of traps along the fence line to protect your own trees. After MEG's control operation the possums coming into your property are full of poison.

Not only has MEG spread an unacceptably cruel poison but the possum has left 10% behind. 10% is twice the trigger figure so the Knox block will have to be re-done.

Is this the quality of work we can expect from an enviro-group which is spending \$275,000 of conservation money every year?

Sport

Coromandel Recreational Fishing Club

By Allison Brown & CRFC Committee

Hi to all,

June has now been and gone so only two months of winter left before spring arrives.

Fieldays has also been and gone as usual with fog and rain but the gulf has been nice and calm. So far the fishing has stayed very steady and the water temps are holding (no predictions for how long).

The Clubs AGM is on Saturday 3pm **13 July** at The Admiral Arms. If you are interested please feel welcome to join us. Please put this on your calendar as we need support and members taking the Club forward. We have a few ideas to discuss and need input. Will be great to see you there.

Kevin Brett weighed in a 6.995kg snapper for the \$100 for May.

Fish for the month of July for members is yellow tail. I think this will be quite a challenge.

As always – here's to tight lines.

Coromandel Croquet Club

By Kaye Anderson



Three new players have joined us recently and are enthusiastically learning the game. We have also begun doing some research into the long history of our club with the idea of putting together a booklet of photos and articles to ensure that the history is not lost. Here's a snippet:

New Zealand Herald, 7 October 1912

"The members of the Coromandel Ladies Croquet Club held a meeting recently. Mr. Ben B. Johnson presided. The business principally dealt with was to arrange the date of opening, and this event was fixed for October 19. Afternoon tea will be supplied by the ladies of the club."

How times have changed! We currently have two male members and our president is a woman. If you have any photos or stories please contact Raewyn McKinney on (07) 866 8711.

We are on winter hours now, meeting at 9.45am to begin play at 10am, both Tuesdays and Fridays. If you are keen to join us and need more information, call Kaye on (07) 866 8968. Otherwise just come along on a Friday. The club is situated in Woollams Ave next to the Bowling Club.

PENINSULA ELECTRICAL SERVICES LTD

Commercial & Domestic Electrical Contractors



RAVINDER & SUE RAJ

Registered Electrical Inspector 1750 S/H 25

P.O. Box 109

Coromandel

Telephone (07) 866 8166

Free Phone: 0800 4 Electrical (0800 435 328)

E-mail: ravinder@e3.net.nz

Coromandel

Fax (07) 866 8162

Mobile (0274) 738 734

Classifieds

Classifieds cost 30 cents per word – please email your words to corochronicle@gmail.com or call/txt Debbie on 021 235 6648.

PROFESSIONALS

A - Z COROMANDEL THERAPIES Tina 0212019750. Hawaiian KaHuna Massage & Bodywork. TENS Pain Management, Earthing, postural Alignment & post Rehab coaching. NEW: “Move to Heal” open class every Monday in July, 5.10 - 6.20pm, \$10. Location: Hall above swimming pool, Coromandel Town. All welcome!

A LOCAL HANDYMAN Doug Marsters for all types of maintenance jobs including Gib Fixing and Plastering, Ornate Cornice, Archers and Ceilings new and old. Over 20 years' experience. Ph 022 019 9255 or 022 019 9133 free quotes.

ABBY'S HEALING HAVEN 021 352 486. *Therapeutic and relaxation massage therapy 1 hour \$80, 90 mins \$110 *Pranic Healing- Chakra and energy clearing and balancing 90 minutes \$110 *TBT- Trauma busting treatment, an effective process for trauma and symptoms of PTSD, 60 minutes \$80 *Organic skincare and makeup consultations- Organic Ayurvedic facial massage 30 minutes \$45.

AFFORDABLE DESIGN for print and web. For businesses and artists. Tuition in Photoshop and Indesign available. Jacqui 022 392 8588.

ALL ASPECTS OF TREE WORK done professionally. Coromandel based Dynamic Tree Care. Call today 027 451 2224 or (07) 866 8177.

BEGINNER YOGA WITH BECKS Tuesdays at the Anglican Church Hall, 170 Tiki Rd, 5.30pm to 6.45pm, \$10. All welcome, equipment provided. Phone 027 407 0079 for more info, www.rebeccaleaker.com.

BECKS NOURISHING WINTER YOGA WORKSHOP Saturday 13 July, 10am to 12.30pm, \$30, Anglican Church Hall, 170 Tiki Rd. Limited spaces, contact Becks 027 407 0079, (see page 15 for more info)

BICYCLE REPAIRS AND SERVICING Recycled/serviced bikes for sale. Miles Watson 020 4150 6575.

BROKEN GLASS? Call Mike Coromandel Glass (07) 866 8869.

COMPUTER SOLUTIONS. Microsoft Certified Systems Engineer with over 15 years of IT experience providing solutions and support service for PCs, Laptops, Printers, Wired and Wireless Networks, Virus and Spyware removal, Data Protection and Recovery. Up gradations, Consulting, Design and Training. Contact: Dheeraj Bali Ph (07) 866 7550 Mob 021 207 1341 E-mail: dbali@vodafone.co.nz

COROMANDEL CATTERY (07) 866 8117, 027 433 1665.

GARDEN MAINTENANCE AND LAWN MOWING. Keen, energetic and experienced. Miles Watson 020 4150 6575.

GIB STOPPER - Richard Field. Local and coastal. Ph 029 778 8645.

GIB STOPPER/PAINTER All Gib Services, Geoff, local 022 027 0290.

INTERIOR PLASTERER/PAINTER - Grant Smith ph (07) 866 8436.

MOBILE SHEEP SHEARING call AJ 027 499 1448.

NAILED@SHEPSPLACE Gel Polish and Nail Art Specialist phone or txt for appointment 022 432 4519.

PAINTING interior/exterior. Experienced Tradesman. Free quote Jonathan Scott 022 050 0963.

PIG HUNTERS. Pigs and mutton rolled and seasoned. Phone Ernie 021 0261 7945.

PROOF READER AND COPY EDITOR. Give your writing professional polish. Confidentiality guaranteed. Qualified and Experienced. Manuscripts, brochures, CVs, letters... Contact Carolyn 027 868 6072.

RANCH SLIDER WON'T SLIDE? Call Mike Coromandel Glass (07) 866 8869.

SOLAR SYSTEM DESIGN & INSTALL Good Energy your local Solar Specialists based in Whitianga. Ph Simon 021 242 3394.

STUMPGRINDING - Machine assisted stump removal, all sizes all areas. Ph 027 472 6627.

WINDOW CATCH BROKEN? Call Mike Coromandel Glass (07) 866 8869.

FOR SALE

GARAGE SALE: Sat 6 July 9am. 475 Driving Creek Rd. Tools and good stuff from a big clean-out.

MOORING CLOSE TO HANNAFORDS, suit up to 20 tonnes. Used for 16m launch, inspected Oct 2018. (07) 866 3513.

TEKNATOOL NOVA TL 1500, wood lathe, swivel head, comes with chisels \$900. Ph (07) 866 8171 evenings.

FOR RENT

A&JS STORAGE Totalspan units Ph Judy 021 071 2252.

MAIN STREET SHARED OFFICE SPACE

Available Great location with shared meeting rooms, reception area and some flexibility to the space available and/or term. So if you're looking to start up or take your business to another level or just need to move out of that home office let's see if we can make something work. Phone Paul Prouse 027 549 3769.

TINY HOUSE, nr Driving Creek Railway, \$150/wk including power, mezzanine bed, gas hob, outside flush toilet, suit one person, ph Naomi (07)866 7337 or text 021 0827 5375.

WANTED

ARTISTS EASEL. Phone Kaye (07) 866 8968.

E.P.N.S cake forks. (07) 866 8593.

RENTAL NEEDED. 2-3 bedroom long term rental needed for professional with 2 children. Good references available. Contact Kara 021 158 9700.

WANTED ALL LIVESTOCK We inspect in the paddock. Also we transport every Thursday to Waikato's largest saleyards in Morrinsville. Phone Dave Coatsworth 027 481 7100.

WORK WANTED

DYNAMIC TREE CARE - Council approved professional local arborist service for all Tree Work. Fully Qualified, Equipped and Insured. Health and Safety compliant. Free quotes. Jobs large or small. Professional chainsaw sharpening. Call now (07) 866 8177 or 027 451 2224.

STUMPGRINDING - Machine assisted stump removal, all sizes all areas. Ph 027 472 6627.

TREE SERVICE. Dismantling or pruning. Free quotes. Call Jeremy Haszard 027 421 0603.

Poetry SPOT

Pondering Wistfully

By John Irvine

In the lush green paddock beside our creek,
not a stick more than fifty yards away
stands a beautiful old Aussie gum tree
leaning into the prevailing north wind.

From my window upstairs the dreaming has
lasting memories flooding through my mind,
memories hot, dry and endless drift by
filled with kangaroos, emus on red plains.

Azure daytimes, star-bedecked dark night skies,
ragged groves of Ghost gums and Sandalwood
hiding wrens, babblers, butcherbirds, galahs,
lending shade to wanderers like myself.

When the time comes for me to shed my boots
I wish to lie beneath that gum tree's roots.

Advertisers' directory

Company	page
360 Discovery Ltd	5
Alpha Drywall	8
Ann Kerr-Bell – Natural Medical Centre	21
Coro Gym	17
Coromandel Accommodation	13
Coromandel Construction	4
Coromandel Garage Door Services	7
Coromandel Garage Ltd	16
Coromandel Marine Engineering	14
Coromandel Marine Farmers' Association	25
Coromandel Players	29
Coromandel Plumbing (1986) Ltd	21
Coromandel Quarry Ltd	12
Coromandel Refrigeration	36
Coromandel Towing	7
Driving Creek Railway	26
Dynamic Tree Care	30
Flooring Xtra	2
Gaia Decorators	29
Gulf Mussel Farms	9
Harcourts	18-19
Hauraki Taxation Service Ltd	26
ITM	29
James and Turner	2
James Drainage '97 Ltd	12
Jonathan Scott –painting	4
Llandem Consulting Engineers Ltd	9
Mana	24
Papa Aroha Engineering	29
Peninsula Electrical Services Ltd	31
Peter Burne – Builder	17
Purnell Lawyers	15
Richardsons Real Estate	10-11
Rob's Small Motor Repairs	6
Ruamahunga Bay Joinery	7
Scott Revell Building Contractor	20
Scott Simpson MP	8
Star & Garter	2,7,8
Tangiaro Lodge	2
TCDC	23
Te Korowai Hauora o Hauraki	27
Trinity Network	35
Twentymans	8
Waitaia Nursery	28

Coromandel Town weekly and monthly meetings

Every Monday

Step Aerobics at Coro Gym.....8am
 Coromandel Hikers' Group, Hauraki House, Colin & Elspeth (07) 866 71379am
 Monday Walkers, Woollams Ave car park north end, Irene 021 157 84089am
 Sit n Be Fit at Coro Gym.....9.30am
 Steiner Playgroup9.30am-12.30pm
 SeniorNet Coromandel contact Loes (07) 866 80534pm
 Body Balance & Yoga Classes at Trust Waikato Events Centre (upstairs Swimming Pool) contact Tina 021 201 9750 (Mondays in July).....5.15-6.25pm
 Bridge.....7pm
 Four-part harmony singing, Sue (07) 866 8833.....7.30pm

Every Tuesday

Pastel Artists Coromandel, Coromandel Aero Club Rooms (07) 866 7220.....9am-12pm
 Coro Walking Group, Lotto Dairy, Ruth (07) 866 72469am
 Croquet, Woollams Ave, Kaye (07) 866 89689.45am
 Yoga for everyone, Colville Hall, Kate 021 125 315210am
 Playcentre, Woollams Ave.....10.30am-1pm
 Beginner Yoga with Becks, at the Anglican Church Hall, 170 Tiki Rd, \$10.
 Contact 027 407 00795.30- 6.45pm
 Coro Motorcycle Club, Star & Garter, John 027 234 10137-9pm

Every Wednesday

Step Aerobics at Coro Gym.....8am
 Coromandel Community Organic Garden volunteers drop in time9-11am
 Sit n Be Fit at Coro Gym.....9.30am

Every Thursday

Coro Walking Group, Lotto Dairy, Ruth (07) 866 72469am
 Coro Bowls club day.....9.30am
 Coro Art Group, St Andrew's Church Hall, Val (07) 866 89119am-12pm
 Free Guided Meditation, Havalona Pyramid10-11am
 Badminton - student session in school gym term time only,
 Lorraine 027 441 70173.30pm
 Badminton - senior session - in school gym cost \$2. Lorraine 027 441 70176.30pm

Every Friday

Step Aerobics at Coro Gym.....8am
 Yoga for everyone, Anglican Hall, Kate 021 125 31529am
 Croquet, Woollams Ave, Kaye (07) 866 89689.15am
 Playcentre, Woollams Ave.....9.45am-12.15pm
 Coromandel Home-school Group, Julene (07) 866 833310am
 Coromandel Tennis Club "club day"4pm

Every Saturday

RSA Coromandel, RSA Club Rooms Woollams Ave. Courtesy van available.
 President Kevin Stone (07) 866 7576.....3.30-7pm

Every Sunday

Anglican Church Service10am
 Coromandel Tennis Club "club day"1pm

Monthly

1st Mon – Coro Patchwork & Quilters, St John rooms,
 Jill (07) 866 7484.....9.30am-3.30pm

3rd Mon – Coro Patchwork & Quilters, St John rooms,
 Jill (07) 866 74849.30am-3.30pm

1st Wed – Coro Embroiderers' Guild, St John rooms,
 Margaret Burgess (07) 866 576910am-3pm

1st Wed – Lions Dinner meeting, St John rooms.
 President Jean Smith 021 208 7576.....6pm

2nd Wed – Garden Circle. Jeni Mudgway 021 0227 53411pm

3rd Wed – Lions Business Meeting, St John rooms.
 President Jean Smith 021 208 7576.....7pm

1st & 3rd Sun – Church Service at St Andrew's Church
 Rings Road.....10am

If your meeting has been omitted, please email Debbie at corochronicle@gmail.com with the subject "meeting", or txt/ph 021 235 6648, or post details to PO Box 148, Coromandel 3543. Please include contact name and phone number.



More properties for sale with Team Rob & John

We're Locals. We get it.



TRINITY
NETWORK
REAL ESTATE
LICENCED REAA (2008)

New
Listing

By Negotiation

Asking Price \$1,100,000

Asking Price \$439,000



Coromandel, 1455 Buffalo Road

Download Infopack: www.trinitynetwork.co.nz/136588/

Te Kouma, 84 Kowhai Drive

Download Infopack: www.trinitynetwork.co.nz/136579/

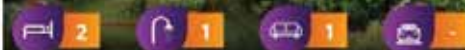
Coromandel, 205 Hauraki Road

Download Infopack: www.trinitynetwork.co.nz/136512/

Asking Price \$475,000

Asking Price \$495,000

Asking Price \$540,000



Tuataewa, 22 Puriri Place

Download Infopack: www.trinitynetwork.co.nz/136575/

Preeces Point, 2328 Tiki Road

Download Infopack: www.trinitynetwork.co.nz/136576/

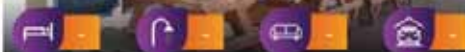
Tapu, 12 Tapu Coroglen Road

Download Infopack: www.trinitynetwork.co.nz/136565/

Asking Price \$1,085,000

Asking Price \$85,000

Asking Price \$149,000



Preeces Point, 285 Preeces Point Road

Download Infopack: www.trinitynetwork.co.nz/136535/

Coromandel, 75 Kapanga Road

Download Infopack: www.trinitynetwork.co.nz/136562/

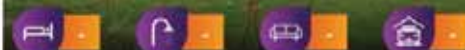
Coromandel, Coro Cafe

Download Infopack: www.trinitynetwork.co.nz/136287/

Asking Price \$549,000

Asking Price \$899,000

Asking Price \$400,000



Coromandel, 19 Victoria Street

Download Infopack: www.trinitynetwork.co.nz/136526/

Colville, 89 Wharf Road

Download Infopack: www.trinitynetwork.co.nz/136546/

Amodeo Bay, 1076 Colville Road

Download Infopack: www.trinitynetwork.co.nz/136483/

Asking Price \$3,200,000

Asking Price \$480,000

Asking Price \$1,200,000



Coromandel, 1159 State Highway 25

Download Infopack: www.trinitynetwork.co.nz/136152/

Coromandel, 435 Tiki Road

Download Infopack: www.trinitynetwork.co.nz/136569/

Coromandel, Salty Towers

Download Infopack: www.trinitynetwork.co.nz/136423/

Contact us today for a free confidential no obligation appraisal on your property

If you would like a reference from any of our happy purchasers & vendors, please don't hesitate to contact us



Team Rob & John

Rob Keatley
M: 027 577 7424

John McCaughan
M: 021 212 4423



TRINITY
NETWORK



perfect AIR

PERFECT PRODUCTS | PERFECT SERVICE | PERFECT AIR

HEAT PUMP DEALS

Bed Room



4.7 kW_{max}

Daikin FTXS25LVMA

Heating 3.4 (1.3-4.7)kW
Cooling 2.5 (1.3-3.2)kW

Fully Installed Price:

\$2197



Living Room



6.8 kW_{max}

Daikin FTXS46LVMA

Heating 5.1 (1.7-6.8)kW
Cooling 4.6 (1.7-5.3)kW

Fully Installed Price:

\$2950



Open Plan



7.7 kW_{max}

Daikin FTXS50LVMA

Heating 6.0 (1.7-7.7)kW
Cooling 5.0 (1.7-6.0)kW

Fully Installed Price:

\$3297



Energy Efficient, Quiet, Reliable, Comfortable, Clean, Healthy



Large Area



10.8 kW_{max}

Daikin FTXM71RVMZ

Heating 8.1 (2.0-10.8)kW
Cooling 7.1 (2.0-8.9)kW

Fully Installed Price:

\$3795



WiFi Control

Optional Wifi control

Control your Daikin Heat pump with your Android or iOS device. All you need is a permanent internet connection for your Wi-Fi network, and an internet connection for your phone or tablet. You can monitor and control your system from virtually anywhere.



\$204

Monster



11.2 kW_{max}

Daikin FTXS85LVMA

Heating 9.0 (3.0-11.2)kW
Cooling 8.5 (3.0-10.5)kW

Fully Installed Price:

\$4155



Free Onsite Consultation and Quotation Available

Introducing the most Efficient Heat Pump, Ever...

More than just a heat pump the Daikin US7 Range can ventilate, humidify, dehumidify, purify, heat & cool. The US7 is the first heat pump in New Zealand to be awarded a 7-star super efficiency rating. Call us today to see how this distinguished, advanced system can transform your home



Daikin FTXZ25NV1B

7.5 kW_{max}

Heating 3.6 (0.6-7.5)kW
Cooling 2.5 (0.6-3.9)kW
7 Star Energy Rating
Input 0.42kW
COP 5.9

\$3637

Incl Back to back installation

Daikin FTXZ35NV1B

9.0 kW_{max}

Heating 5.0 (0.6-9.0)kW
Cooling 3.5 (0.6-5.3)kW
5.5 Star Energy Rating
Input 0.68kW
COP 5.15

\$3905

Incl Back to back installation

Daikin FTXZ50NV1B

9.4 kW_{max}

Heating 6.3 (0.6-9.4)kW
Cooling 5.0 (0.6-5.8)kW
4.5 Star Energy Rating
Input 1.18kW
COP 4.6

\$4610

Incl Back to back installation

Auckland - Hauraki - Whitianga - Coromandel

Perfect Air
7-12 Crosbie Road
Pukekohe 2120
09 239 0905

Coromandel Refrigeration
435 Kapanga Road
Coromandel 3506
07 866 8463

Coastal Refrigeration
30 Campbell Street
Whitianga 3510
07 866 4140

www.perfectair.co.nz

07 866 4140

*All prices include GST. Installation prices are based strictly on back to back installation and include electrical connection with an electrical certificate of compliance. A Free no obligation onsite quotation and consultation to discuss which heat pump best suits your home is available. Prices valid for quotations booked before May 30th 2019 or while stocks last, strictly limited stocks available.