

July 2015
Volume 19 Issue 7

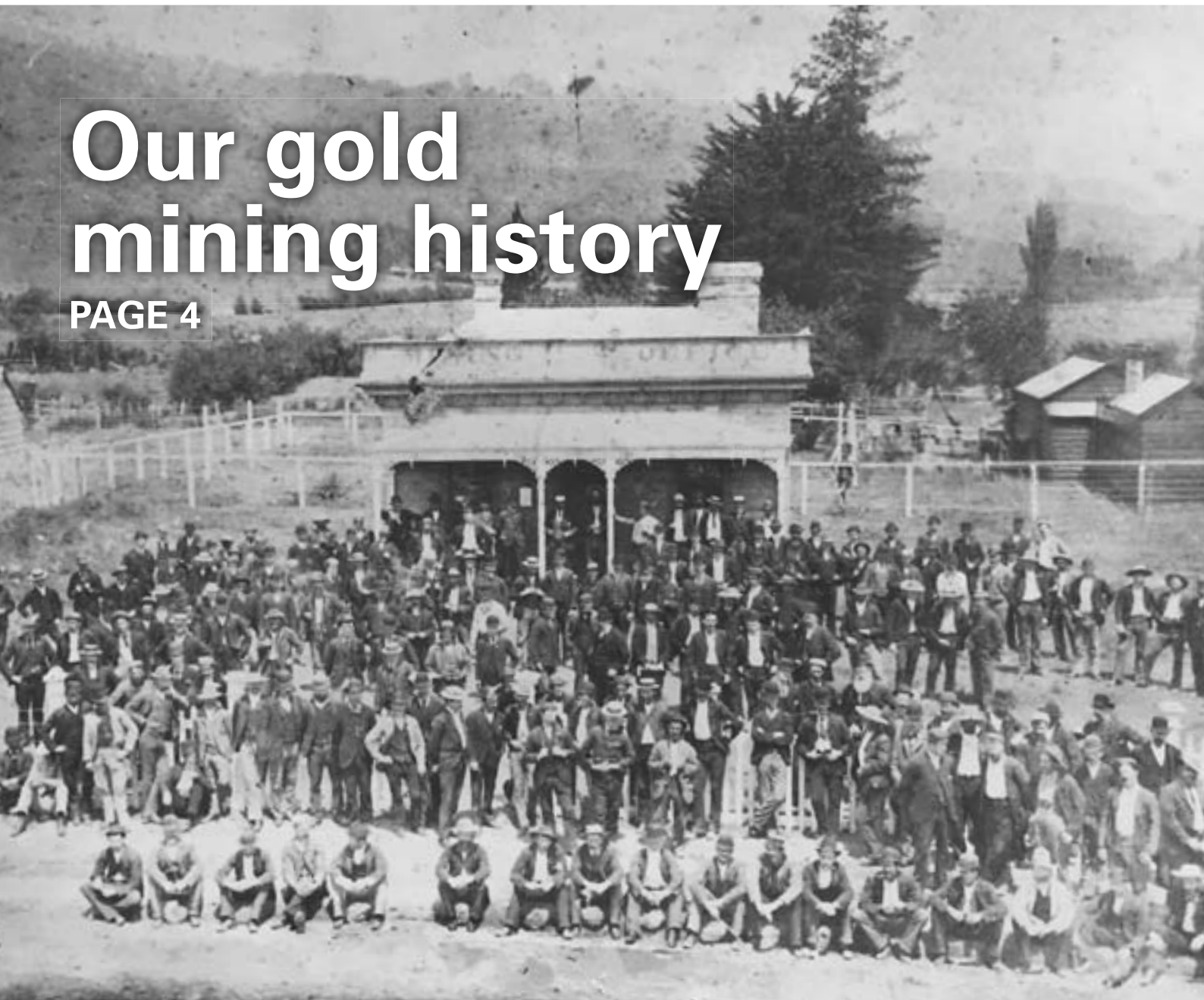
Coromandel Town Chronicle

Founded and owned by the Coromandel Town Business Association since 1996

FREE
Community Magazine

Our gold mining history

PAGE 4



Monday walkers PG 21



Road safety PG 25



Harp concert PG 28



Welcome to the Coromandel Town Chronicle

Cover picture:

Pay day of Hauraki Mining Company miners 1896. Picture courtesy of Coromandel Museum.

The *Coromandel Town Chronicle* is published by Jude Publishing Ltd on behalf of the Coromandel Town Business Association. It is delivered free to the Coromandel area.

Jude Publishing Ltd
PO Box 148, Coromandel 3543
www.coromandeltownchronicle.co.nz

If you have any news stories that you'd like included please email corochronicle@gmail.com.
If you are not sure how to put an article together for publication then find tips and advice on the website:
www.coromandeltownchronicle.co.nz/html/guidelines.html

For advertising please email Debbie on corochronicle@gmail.com or phone (07) 866 7119 or 021 235 6648

The Coromandel Town Chronicle is printed with vegetable oil based inks by Print House Ltd, Hamilton. An accredited FSC and PEFC printer. Enviromark Bronze certified.

Coromandel Town Business Association's Mission Statement: To support business, partnering with our community board, to strengthen and encourage the development of Coromandel Town and environs.

**Want to support the CTC?
Live out of town? You need an annual subscription.**

Only \$38 (incl. GST) NZ postage only.
See contact details above.

**Deadline for the next issue is 4pm
Monday 20 July**

Disclaimer: The publisher and its editors of the *Coromandel Town Chronicle* shall not be responsible in any way for opinions expressed in letters and articles contained in the *Coromandel Town Chronicle* or for loss or damage suffered by anyone in reliance upon the information contained therein. Further, no endorsement of any product or service featured or advertised in the *Coromandel Town Chronicle* should be implied or assumed.

Coromandel Town Business Association Disclaimer: The opinions of the editor do not necessarily reflect the opinion of the Coromandel Town Business Association. The Chronicle should be representing all parties and showing a cross section of feedback from the community and we believe this to be the case. The editor of any publication is entitled to a personal opinion and provided this is identified as such then this is acceptable to us.

ISSN 1178-721X (Print)
ISSN 1179-4895 (Online)

Editor's comments

In general, the feedback on my piece on the changing face of Coromandel town last issue was all positive, however it is disappointing that some people were offended by me drawing attention to the empty shops – as if tourists don't see the empty when they drive or walk up the main street. Please people, I am trying to help brainstorm what we want for Coromandel future! Whenever I write anything except about the weather there is always someone criticising me.

July bring the return of the Illume Festival. I hope the weather is fine for it. Look up the website www.illumefest.co.nz for up-to-date details of what is happening when, and enjoy.

Debbie

Letters

The Changing Face of Coromandel Town

I have always enjoyed reading the Chronicle from front to back. Not so for the June issue. Who in their right mind would put our empty premises on the front page? Great for our tourists to see that (I think not). I know of one tourist operator who actually hid the issue from sight of their guests when usually they were quite proud to have it on display.

Unfortunately I think it is a sign of the times. You can drive through any town and see numerous empty shops. Coromandel is no different.

As for "what people want" – we have had over the years at least six of what you listed on page four. The fact is Coromandel doesn't have the numbers to sustain specialised shops or services.

And "other ideas for helping the town" – Good grief don't rely on the Council. They can't even fix the recreational boating issues in a timely manner which puts off a lot of boaties coming to Coromandel, so we miss out on their "spend" as well.

Why should landlords charge cheaper rates? Their overheads don't change from summer to winter.

Why should restaurants charge cheaper prices to locals? They don't get any relief on wages and expenses from anyone because our shops are dwindling.

And lastly on another note I totally agree with Martin Edwards where we allow a very small minority of people to squash any ideas or projects.
Janice Syddall, Coromandel

Post shop concerns

Dear Editor,

Lots of changes lately in town. Some good, some not so sure. We enjoy the new supermarket with many new choices, a great selection, and heaps of space. Well done.

At the same time we are sad to see the post office being closed and the staff squeezed into the far corner of the supermarket. It appears like a late decision by NZ Post and no appropriate solution for delivering their services, nor for working in for their staff, who look a bit like "fish out of water".

There is only one terminal and it took 10 minutes to buy a stamp, then we needed to go around the outside to drop the letter in the letter box because there is no space for keeping today's post. It's not practical.

Personally I'd prefer not to need to enter a supermarket to do posting and banking, even a nice one like we now have.

We heard the old post office will still be used by NZ Post with just the front closed. We're surprised if this is true, as we see no improvement or gain. Why change it?

N & D Kirsch

Editor's comment – Maybe they need to turn off the walk in fridge and make that the post shop!

Send letters to the *Coromandel Town Chronicle*, PO Box 148, Coromandel 3543 or email to corochronicle@gmail.com. Contributions should be kept short, and should not exceed 350 words. They must include name, address and telephone number. The editor reserves the right to reject letters or edit them for clarity and space.

Events

July – see back page

August

Saturday 8 – The Waiter's Revenge Dinner (see pg 16)

Friday 28 – Daffodil Day (see pg 10)

September

Friday 25 – Coromandel Music Society present String Wizardry

October

Saturday 31 – The Cranleigh K2 Road Cycling Classic (see pg 33)

November

Sunday 1 – Coromandel Music Society present Miho's Jazz Orchestra

Resignation

To the Coromandel Community,
I will be resigning and retiring from my role as Principal and from the teaching service in NZ as of 31 July 2015.

There are so many people that I want to thank, too many to fit into 350 words! For the full version of this letter, see it on <https://sites.google.com/site/farewellcoro/home>

I leave with a genuine sense of achievement having helped make your school drug free, enriched with International Students, a Trades Academy and the use of a vastly updated IT infrastructure. Student achievement is at a level to be celebrated, together with a forward looking curriculum. The school roll is growing; made possible by the hard work of teaching and support staff and their focus on the educational outcomes. The support of the Board (past and current) on key policy issues was helpful as well.

Thanks to the community and families in welcoming International Students into their fold.

Exceptional support from non-teaching staff; my thanks goes to all of them.

Two individuals I want to say a special thank you – Lesley Thwaites, whose integrity and expertise in finance and administration allowed me to focus on teaching and learning; and Joan Hart who did so much of the detail to help turn vision into reality.

Thanks to the Keltic Fair team. I hope more people will volunteer to help this dedicated hard working team.

The students who, without knowing it, made me feel it was all worthwhile. A successful school is one where staff and students work with each other, and supportive families (including grandparents) get behind learning and the teaching.

The Coromandel Players (thanks Liz and Don), my Drama classes. I wish my Year 11 Drama class the best as they tackle a Level 2 Achievement Standard this term.

Sadly, my motivation for leaving is a total breakdown in relationships between myself and the Board.

The school is facing a change of leadership now. Support your school and staff who work very hard to meet the diverse needs of your children. Look after it, look after its profile, and build upon its success.

Asha Peppiatt

Sea Coromandel

Dear Editor,

What about developing a marine attraction?

Not as grand as Kelly Tarlton's, but more along the lines of the one on the Otago Peninsula (which is primarily a research institute).

It could include live displays showing growth cycles of mussels, oysters and crayfish. It could show other types of local shellfish e.g. cockles, tuatua, pipi and mina. Also note their importance in the food chain.

Could include video displays of the workings of our mussel, fish and oyster factories, harvesting and packing, and eventual markets. There are many historical photos with which to make static displays.

Info on types of fish species in our waters (and limits of catching). Info on types of seaweed and uses.

It could also house (permits allowing) seahorse aquariums and colourful anemones, mina and paua in pen tanks. It would also be interesting for tourists. May appeal to school groups from other areas as an educational tool.

It could also serve as a ticketing office for aqua/marine activities, e.g. dive tours, fishing trips, island adventures etc. – and promote the same.

I envisage it being run by a trust similar to the museum or the railway. It would be exciting for Coromandel to have something new and unique, showcasing our fishing and marine history. It would employ locals in a minor way, and would certainly widen the tourist potential of our town.

What do you think?

From Lyn Whitcombe, Coromandel

Heritage protection and town development

To the Editor,

I read with interest Martin Edwards letter to the last Chronicle and agreed totally with him until I read his comments about Heritage protection “squashing any new ideas or projects”.

As one who has advocated over the years for the protection of our heritage I am disappointed to hear that this old concept still exists.

The preservation of our heritage is as much about economic development as is anything else. The tourist trade is a vital part of this community's ongoing economy and the attractiveness of our heritage town plays a fundamental role in bring people here. Tear down our old buildings and replace them with modern shops then we really do look like any other struggling small town.

In all the years I have been involved in this community I have never heard of any business being harmed, or not proceeding, by having to comply with our rather loose heritage restrictions alone. On both occasions I know of, where development was delayed, there were other issues that were of great concern as well.

In fact, if we had not had the provisions we did have in place, our new Four Square could have been a boring modern building instead of the attractive one that now graces our town and fits in like it's always been there. Any hold up in its development was not down solely to heritage issues, but also with traffic concerns and it still remains to be seen how the lower end of town will cope with summer's influx of visitors.

It is not a matter of heritage protection or economic security, it is not one thing or the other that we need, but both.

In fact, I believe that our economic health relies to a large degree on our preserving the town's character.

It was a great article about the town's future and it is obvious that people are concerned but again I was surprised at some of the ideas that people have put forward. Several of the things suggested already exist in town. Perhaps we are all guilty of sticking to our old routines and not noticing what is actually on offer here, such as the stationers, art galleries and beauty salon.

Perhaps we all need to take a look around and see what there is to offer that we hadn't noticed, then do our best to support these local businesses.

Chris Stark, Coromandel

Loss of pure water, scenic beauty, fish habitat

Editor,

I watched with dismay as the Greenhills stream was dredged following unwarranted concern from residents that it would flood. Historically this stream has not flooded. It was renowned for its eels, its clear water, and its giant kokopu.

RMA s6 requires protection of the natural character of streams and their margins. Where stream banks are planted in native trees on both banks so as to form an overhead canopy, weeds are shaded out, the banks are held by tree roots, and the water remains cool and clear. The statute has a sound scientific basis. Where streams flow through native forest, their beds are three times wider than the reaches through open pasture where weeds invade and mud banks form as is now the process in the Greenhills stream.

Dredging is hastening the deterioration of the Greenhills stream. It is interfering with the stream's natural meanders and replacing flood aprons with steep sided banks. With exposure of the channel to light, grasses have invaded and captured mud, while aquarium weed is spreading. The weed is holding waste, discharged from the new stormwater culvert alongside the camping ground. This culvert appears to have been laid without adequate fall, and should not have been directed into a stream.

Respecting RMA s6, a wiser, cheaper, and longer lasting course of action is to plant the banks with native trees and allow the stream to recover its scenic beauty. Should we have planting or dredging? Please go to Victoria Street and have a look. It is our rates that pay for the work. Wendy Pond, Secretary, Manu Waiata Restoration & Protection Society

Goldmining history

By Don Goodall

Very little gold around Coromandel was extracted as lumps, nuggets or alluvial gold. After a few fortuitous discoveries of water rolled and smoothed pebble like samples, it was soon realised that almost all the gold was locked up in the quartz rock. In some rock samples you could actually see the tiny grains of gold buried in the quartz, but in much the gold was combined chemically. The rocks would have to be crushed in the many stamper batteries. The deafening thumps made up to 25 stamps per battery dropped, at about 90 strokes per minute; kept the entire town awake. It was said that the stampers worked 24 hours per day, 6 days a week, and on the seventh day the town's people slept.

Then the tiny particles of gold were extracted by chemical means. To find out if the quartz rock was gold bearing, the miners had assays done – chemical tests in which the proportion of gold in the rock was determined. By taking several samples, and finding averages, it could be decided whether to mine that rock deposit, or leave it alone.

Early on, the chemical extraction techniques depended on mercury. Liquid mercury was mixed in with the crushed rock and rolled around, pounded and so the mercury formed a putty-like amalgam.

This amalgam was placed in a pot or crucible and heated up until the mercury was vaporised. This gas was caught in a water cooled retort, condensed, and so could be recycled. Gold remained. The uncombined powdered rock was dumped.

Great care had to be taken as the mercury vapour was toxic – sufferers were said to

have “mad hatters disease” because mercury was first used in the making of the brims of men's top hats. Did you ever have a “funny” older science teacher at school? Some showed symptoms of this mercury poisoning because of the numerous thermometers and barometers broken in school labs, and it was a favoured trick to pass out small balls of mercury to allow pupils to run it around in their palms. The liquid mercury dropped on the floor and gathered in the cracks, and slowly evaporated, contaminating the air. Some science teachers stayed in that environment for 40 years.

This method using mercury was later replaced with cyanide, from about 1890 on. Mercury extracted approximately 50% of the gold. Cyanide processing gave far better returns, extracting about 95%. All these and many other techniques were taught in the Coromandel School of Mines. Essentially it was a mining university in its day. Others were at Waihi, Thames and Kuaotunu.

There is still gold in Coromandel. If mercury processing only removed 50%, then the remaining powdered rock should contain another 50%.

Total gold production from Coromandel was worth approx. NZ\$365 million. Have you noticed where this money was spent around Coromandel?

The Coromandel School of Mines building is now the Coromandel Town Museum. They have many fascinating exhibits of times gone by, especially of the gold mining era. And the Coromandel Stamper Battery still works. The stamps are run by a water wheel. Both are well worthy of a visit.

History kindly researched by Don Goodall

Gold Production around Coromandel

| Mining District | ounces of gold | Present day value \$NZ approx |
|--------------------------|----------------|-------------------------------|
| Kapanga | 73,919 | 120m |
| Kauri Block – Hauraki | 64,483 | 100m |
| Tokatea – Success | 25,698 | 40m |
| Tiki Matawai-Castle Rock | 19,498 | 32m |
| Waikoromiko | 12,858 | 20m |
| Opitonui | 31,135 | 50m |
| Colville | 683 | 1.1m |
| Preeces Point | 304 | 0.5m |
| Mahakirau | 587 | 0.9m |
| Manaia | 296 | 0.5m |

Natural Remedies

By Deborah Hide-Bayne,
author of local cookery book,
Coromandel Flavour

There are lots of colds and flus going around Coromandel at the moment, and having a school-age child pretty much guarantees that you get a dose of every single one.

On-line, I have been seeing lots of ideas for natural remedies and tonics that use fresh turmeric... supposedly it has great antioxidant properties and I have been meaning to try it for some time. So I was delighted to be able to buy some in Coromandel the other day from the Chai Tea House.

Here are a couple of recipes that use it as a key ingredient. You could also buy local honey from The Source... and the other ingredients from the new supermarket... Sorted!

Ginger-Turmeric Drink

1 cup water
¼ tsp. raw, grated turmeric
¼ tsp. raw, grated ginger
pinch of cayenne powder
½ to 1 tbsp manuka honey

Put all the ingredients (except the honey) in a pan and pour boiling water over them.

Leave them to infuse for 10 minutes or so.

Stir, strain and leave to cool a bit. Add the honey just before you drink it (so the active properties aren't killed by the heat).

Spicy Turmeric Tonic

¼ onion
2 cloves garlic
1 thumb fresh ginger
1 thumb fresh turmeric
¼ fresh chilli
1 cup apple cider vinegar

Steep very finely-chopped onion, garlic, ginger, fresh turmeric and chilli in apple cider vinegar for a week or so, shaking regularly.

Drain off the liquid and either take a tablespoon “neat” or mixed with a little honey and thinned down with warm water. Sometimes this is called “fire water” so be warned!

PENINSULA ELECTRICAL SERVICES LTD

Commercial & Domestic Electrical Contractors



RAVINDER & SUE RAJ

Registered Electrical Inspector

P.O. Box 109

Coromandel

Telephone (07) 866 8166

Free Phone: 0800 4 Electrical (0800 435 328)

E-mail: ravinder@e3.net.nz

1750 S/H 25

Coromandel

Fax (07) 866 8162

Mobile (0274) 738 734

COROMANDEL PLUMBING

(1986) LTD

PO Box 23, 1740 Tiki Road, Coromandel



CRAIG DUDSON

Phone/Fax 866 8814

A/Hrs 866 8837

Plumbing, Drainlaying and Gasfitting

Heart Beat – St John Ambulance Coromandel/Colville

By Felix O'Carroll – Station Manager
Coromandel

The shortest day of the year (21 June) has passed and gone we should start to see our days slowly getting longer and the weather starting to warm up leading into spring and summer. However we will see and experience very cold and wet conditions moving forward into the spring hence we all need to wrap up and keep ourselves warm.

This time of the year we get called out to many people who we find are very sick when we arrive, some of whom have been ill for a number of days prior to an ambulance being called. If you feel ill and you have a history of sickness see your doctor or call for an ambulance early. Waiting until you become seriously sick can cause complications hence early intervention is recommended.

Call-outs over this period have remained steady. Medical issues remain the majority of call-outs and overall call-outs were slightly down on numbers against the same period last year. However, we have had an increase in motor vehicle crashes which is not the norm for the area. The use of the Westpac helicopter has also increased. In one week we used the Westpac helicopter four times for various medical and trauma call-outs.

In the last report we mentioned we had a new updated MDT (mobile data terminal) installed. We are happy to report that this is operating well with no issues to date. The unit not only gives us details of the call we are going to but also has a GPS map attached on a big screen which takes us to the address of the caller.

Now, I would like to take this opportunity to bring a very serious problem to the Community's attention. Many of you will have received a pamphlet in your letter box asking for more ambulance volunteers (see our advertisement on page 7). We need more volunteers now so training can get underway

and we can be ready for the busy summer period.

Coromandel ambulance station is a volunteer station, staffed by local community people working for their community. It is a vital and important service to the local community and is currently struggling to maintain a 24/7 service as we do not have sufficient volunteer staff.

When the Coromandel ambulance is not in service we are reliant on ambulances coming from Thames and/or Whitianga. This will delay the ambulance's response time. We need your help now so we can continue to provide an ambulance service to our community.

Station training is held every Thursday starting at 7pm and finishes before 9pm. The training incorporates revision of clinical matters plus practical use of equipment we have on our ambulance. These sessions cater for all levels of our staff and we welcome members of the public to come along. You can see what we do and also learn new skills that could be lifesaving, at no cost to you.

So please, if you have ever considered giving something back to your community you would find it very rewarding and worthwhile joining our team.

To help with our staff shortage we will also be starting renovations at the station to add another bedroom and update the station facilities. The extra room will give ambulance staff from out of town a place to stay and enable us to cover shifts when there are not enough volunteers from within the community to provide an ambulance service 24/7. This is usually more of a problem during the busy summer period. However, our main aim is to increase our volunteer numbers from within the community and provide all those on duty with an updated and



modern facility and a good comfortable area to stay and work.

Now for a gripe. Our staff do not like cold showers. On 23 April two 45kg gas cylinders were stolen from the St John complex. They had just been returned after having been refilled. These cylinders are our only source of hot water and we were very disappointed that those at the station had to put up with cold water showers for washing and cleaning for a couple of days while waiting for the replacement cylinders.

This matter has been reported to the police. However, I was more disappointed and hurt that someone in the area stole these from an organization that gives so much to the community. It is your donations and our community volunteers that keep the station going. If anyone can help us track down the culprit/culprits please give me a call or contact the police.

Lastly, I would like to take this opportunity to thank all our volunteers who put their names onto the roster year to date not only here in Coromandel but all over NZ. Many of our staff have worked several shifts a week to cover shortages of staff. To you, and all the others from out of town filling the gaps, our sincere thanks. Our thanks also go to our Area Committee for recognizing our volunteers' contributions. Last week we all enjoyed a dinner they had organized for the volunteers, their partners and members of the local business community who support our volunteers. A great evening was had by all.


That's it from us.

Be safe out there and stay well. Felix



COROMANDEL MARINE ENGINEERING

- Outboard service centre
- General engineering
- Aluminium & stainless welding



Telephone
Workshop:
028 2580 2351
Office: (07) 866 8004

116,309 Road,
Coromandel,
1km from the main road.





new builds - alterations
extensions - fencing
decking - insurance work

coromandel construction

reliable, thoughtful, competent, eco-aware
Deborah and Duncan Bayne

www.coromandelconstruction.co.nz
duncan@coromandelconstruction.co.nz
Phone us on (07)866-7796 or 021-173-7457

Coromandel Embroiderers Guild

By Diann Cade

Retreat. The Oxford definition reads.... retreat n. quiet or secluded place. The place will not be quiet for long when many of our members arrive for the 2015 Guild Retreat. Two days and nights together to stitch, socialise and generally have a good time. This is a much enjoyed biennial event and things that happen at retreat, stay at retreat!

The workshop for the two days is Box making and Sashiko or appliqué with embroidery. Sashiko is a Japanese decorative running stitch traditionally used to reinforce or stitch together fabric in items of clothing. Today the stitching is generally for decoration using traditional patterns.

Our exploratory cut work last month was a very good experience. While previously having had formal tutoring in the style of embroidery, the informality of this exploratory workshop encouraged the design of a variety of individual "experimental pieces" with a similarity only in the cutting technique.

For further information about the Coromandel Embroiderers' Guild contact our President Jill Wilson (07) 866 7484



Poetry SPOT

The Old Man

By John Irvine

On a treeless hill
the old man sat smiling
proud
the cleared land from horizon to horizon
was his
miles and miles of perfect fences
thousands of healthy cattle
herds of horses, flocks of sheep
his own small village
below
So overcome was he with pride
that his heart failed
and all he took to
the other side was his soul
and the land sang

Biodynamic Gardening

By Gill Bacchus

There was a good turnout to the biodynamic gardening workshop on 23 May at Sue and Wally Gilmer's garden, in spite of a rainy day. We admired their deep fertile soil, then discussed how to use the biodynamic planting calendar and the medicinal and nutritional uses of garden weeds. The next workshop will be on **Wednesday 8 July** at Warwick and Elizabeth Mather's property. All are welcome.

For further information please ring Peter or Gill Bacchus on (07) 866 7077

Invite

Richard, Uli and Tane invite all friends and hangers on! to a midwinter party from 6pm Saturday 11 July at Richard's Studio Faré Tahiti, 360 Pagitt Street, Coromandel.

Please bring a bottle of wine or beer. Ladies: a plate of finger food. Open fireplace, dress up warm, dogs welcome. Pray for a fine night!

Let's pretend we're in tropical Tahiti!

Coromandel Patchwork and Quilters

By Sharon Currie

It is hard to believe it is June already with lovely fine days and cooler weather. Members of our group have been completing our "President's Challenge" for the 2014-2015 year. This was called "A Light Bulb Moment". We were given a magazine and a DVD from our library to inspire us for this challenge and we have eleven entries which will be revealed at our Midwinter lunch the 29 June. Members will vote on their favourite and also have fun guessing who made each one as at this stage they are just numbered. We will also receive the details for our next challenge.

We enjoy having visitors at our meetings and at the last meeting we had two visitors from out of town who enjoyed joining us for morning tea and also looking at the various projects in progress. Some of us bring hand work while others bring their sewing machines and there is always someone to help if you need it. Patchwork is not just making quilts. There are lots of smaller things you can make such as table runners, bags, and wallhangings that all involve the skills of cutting fabric with a rotary cutter, accurate piecing and construction of the finished item.

So if you would like to join us our details are as follows.

Our meetings 1st and 3rd (&5th) Monday 9.30am-4.00pm, St John rooms, Tiki Rd, Coromandel. President Margaret Sinclair (07) 866 7104, Secretary Mary Hickman (07) 866 8898



Chartered Accountants The Hauraki Taxation Service Limited

The only full-time Accountants in Coromandel Town.
Sue, Sue and Ann look forward to assisting you
with your accounting and taxation needs.

Open Monday-Friday 9am-4pm

COROMANDEL 07 866 8660 THAMES 07 868 9710

JAMES & TURNER 2014 LTD

FISHING • MARINE • TOOLS • SPORTSWEAR
PAINT • HARDWARE • GIFTWARE • GARDENING

OPEN 7 DAYS

GRANT WEBBER

jandt@vodafone.co.nz

Ph: 07 866 8805 Fax: 07 866 8969

PO Box 16, Coromandel 3543

131 Kapanga Rd Coromandel Town

Like us on Facebook - search "James & Turner"



Dancing In the Dark

By Jess Dziwulski

Dancing In The Dark is a hit! We've had two "Dancing in the Dark" events now and both sessions have been a blast. Thanks to those who have come along and supported this new community event. Let's get even more people through the doors for the remainder of our winter sessions!

Dancing in the Dark is open to anyone who likes to move, groove, dance and generally shake about. There are no fancy clothes, no steps to learn and no one telling you what to do, just you, the music and no lights (yep, no lights!) so no one else can see you when you bust out your favourite dorky dance moves!

We are running fortnightly over winter (**6 & 20 July, 3, 17 August**) at the Anglican Church Hall (near the BP). It costs \$5 and is an 18+, no alcohol event. We are also running an extra event in conjunction with the Illume Festival; "Dancing in the Black Light" so you can hunt out all your neon and white party clothes and come along for an old school glow in the dark boogie (what could be more fun than that?!). Don't miss this one-off event, **Thursday 2 July 8-9pm** at the Anglican Church Hall.

Come on Coromandel, let's have some fun!

Coromandel Garden Circle

By Jane Warren

Our June meeting was held at the Coromandel Bowling Club with attendance of 31 members and two potential new members. Plans are underway for our July meeting which is going to be a Midwinter Xmas lunch with all the trimmings.

Our garden visits were to two lovely gardens which had both been created on sloping properties. The first garden visit was to Jan Panther's home on Wyuna Bay Road. It was a delight to follow the pathways through the trees and for those who wanted to, there was a track all the way down the hill to the water's edge. The second property was Dave and Marie Keeves's place on Preeces Point Rd and we were all in awe of the work that had been done to create such a gorgeous woodland garden.

We all met back at the Bowling Club for afternoon tea and prize presentations for the winning blooms, preserves and arrangements. The winners of the categories were: Miniature Bloom – Glenise Robertson; Single Bloom – Pat Williams; Multi Bloom – Lyn Whitcombe; Arrangement – Shirley Stol; Preserves – Lyn Whitcombe.

Our next project will be to build a float for the Illume Festival at the beginning of July. Anyone wanting to help will be welcome at Karin Lillis's on the afternoon of **4 July**.

Our Midwinter Xmas lunch is on **8 July** at 11.30am at the Bowling Club.



The photo is of Shirley Stol and her winning "Shot Glass" arrangement

Your community needs your help now!

Do you have what it takes to become a St John emergency response volunteer?

Coromandel frontline ambulance and Colville first response need volunteers now.

Join us, so you can be part of a dedicated team, helping, supporting and giving something valuable back to your community. You will learn new skills; work with a great supportive team in an area that can be incredibly rewarding.

Coromandel and Colville are currently recruiting for volunteer ambulance officers. No prior experience is required, as training will be provided by St John.

If you would like more information email Felix at felix.ocarroll@stjohn.org.nz or phone Coromandel Station on 07 866 8279. If no reply please leave a message.

Working Together



St John

ASB



St John
Here for Life

Pepper Tree RESTAURANT & BAR



THURSDAY THEME NIGHTS

2nd July ~ Spanish

9th July ~ Mexican

16th July ~ Roast dinner

23rd July ~ German

**30th July ~ wine & food matching
with Mt Difficulty, Central Otago
Bookings at Goldiggers 866 8380**

Did you know our lunch & dinner menus
are available as takeaway?

View them at www.peppertreerestaurant.co.nz

07 866 8211

Richardsons

Real Estate Ltd
mreinz

Licensed under the Real Estate Agents Act 2008
Understanding the Coromandel Since 1960

Come & meet
the team...

Kim, Robyn,
Kelly & Melissa



EXCLUSIVE
NEW LISTING



"STYLISH PIZZAZZ"

- ❖ An irresistible new residence
- ❖ Brick & Cedar construction
- ❖ 4 double bedrooms (en-suite)
- ❖ Magnificent tiled bathrooms
- ❖ 2,498m2 section, harbour views
- ❖ Double garage, concrete drive
- ❖ Create fantastic landscaping
- ❖ Your dream home! **\$1.125m**

"FUN TIMES AT THE BEACH"

- ❖ Hankering for a holiday home?
- ❖ A few minutes walk to Long Bay
- ❖ Chalet styling, private decking
- ❖ Board & Batten cladding
- ❖ Open-plan living, French doors
- ❖ 2 bedrooms (master with bath)
- ❖ Single garage & store room
- ❖ Plenty of parking. **\$430,000**



EXCLUSIVE
NEW LISTING



EXCLUSIVE
NEW LISTING



"CHECK OUT THE PRICE!!!"

- ❖ Set within 'Greenhills' subdivision
- ❖ Located in original Stage 1
- ❖ Relatively flat 470m2 section
- ❖ Build to capture northerly aspect
- ❖ All services to site
- ❖ Enjoy an easy walk to town
- ❖ Don't let this little beauty go!
- ❖ Please call for details. **\$130,000**

"OUTSTANDING TRANQUILLITY"

- ❖ Privacy, character and space
- ❖ Set on the northern edge of town
- ❖ 4,417m2 in lawns & large trees
- ❖ Home with open-plan design
- ❖ Separate 2 bedroom cottage
- ❖ The loft would make an excellent artists studio; huge double garage
- ❖ Stream boundary. **\$500,000**



EXCLUSIVE
NEW LISTING



EXCLUSIVE
NEW LISTING



"ECOLOGICAL HAVEN"

- ❖ A beautiful place in paradise!
- ❖ Pacific Ocean views through trees
- ❖ 3,263m2 section to explore
- ❖ Open-plan living to good decking
- ❖ Huge variety of native trees
- ❖ Fireplace with wetback for heating
- ❖ Power & phone at boundary
- ❖ 2 brms. Great getaway. **\$342,000**

Richardsons

Real Estate Ltd

Licensed under the Real Estate Agents Act 2008
Understanding the Coromandel Since 1960

In business
for over
55 years

www.richardsons.co.nz

191 Kapanga Road, Coromandel

Ph: 07 866 8900 - Fax: 07 866 8513

Kim 021 533 174, Robyn 021 448 975

Kelly 021 202 6067, Melissa 027 249 8287

The local real estate market is VERY strong with positive enquiries coming from genuine buyers. We have successfully SOLD 29 properties up to mid June with a value of over \$10.2M

A huge thank you to all our valued Clients and a big welcome to all our purchasers



If you would like your property SOLD... please call us any time to arrange a free no obligation market appraisal. We look forward to hearing from you ☺



Central location, well presented 2 brm brick unit, garage, X-lease. \$255,000



Senior Settlement village setting, 2 brm Lockwood, large garage. \$265,000



A great first home, rental or holiday pad, 2 brms, single garage. \$270,000



Excellent Lockwood in the Senior Settlement village, 2 brms, garage. \$310,000



Great cottage styling, open-plan living, sunporch, 3brms, d/garage. \$317,000



Immac B & T 'GJ Gardiner' home in Senior Settlement village, 2 brms. \$325,000



Chalet styling within an easy walk of town, 3 brms, garage & carport. \$325,000



Very well presented 2 brm 'Initial' home, garage + sep garage/wkshop. \$329,000



Brand new and waiting for you! Brick, 3 brms, large deck & garaging. \$450,000



A great country lifestyle, 8.8ha. of pasture & bush, 2 brms, garaging. \$525,000



The Greenhouse B & B ~ immac presentation, 4 brms, 4 bathrms. \$640,000

Congratulations to Peter, Lesley & the team at the 4 Square on the opening of their wonderful new building. We wish them all the success they deserve

Ann's Good News, Naturally

By Ann Kerr-Bell

**Nutrition, Digestion, your Gut and your Immunity**

Do you get enough essential nutrients daily, to keep you truly healthy? Good nutrition results in a nourished body full of strong functioning cells.

80% of your immune system is in your gut. Are your gut immune boosting cells nourished enough?

To prevent degenerative diseases through life into old age, chronic illnesses, and many immune compromised ailments that are now considered normal in ageing such as arthritis, cancer, heart disease, cholesterol, diabetes, aches, pains, fatigue and allergies, you need to consider:

Nutrition: Our modern Western diet and many of the supermarket foods do not provide you with sufficient daily nutrients, as nature intended. Carbohydrates – Are they too processed? Did you know that as soon as whole grains are harvested and then processed, they lose 80% of their essential B vitamins? (E.g. corn to cornflakes, brown rice to rice bubbles, whole oats to instant porridge). Vegetables – Do you have 10-12 servings (handfuls) daily? Keep your energy levels up all day! Protein – Essential daily but too much is harmful. Fats – Good fats rid bad fats and are essential. Water – One to two litres per day will prevent cellular dehydration. So, a lack of sufficient daily nutrition leads to many levels of malnutrition.

Digestion, gut & bowels: When you swallow food it's entering the body's gateway. So everything must work together and efficiently for those vital nutrients from the foods to be efficiently assimilated and absorbed. Do you suffer reflux, heartburn? Can't stop burping? Do you poo daily, with ease? Is your bottom itchy? These all reflect a toxic system, leading to many different levels of disease and illness through life.

Immunity: Your body's protective army are your white blood cells, which are also in your saliva and gut mucosa. With a Live Blood Analysis I can check your white blood cells. To keep them healthy they require certain nutrients from the foods you eat.

The colour and appearance of your hair, nails, tongue, face, eyes and skin colour also can reveal certain nutrient deficiencies and imbalances.

How is your sense of smell? Do you enjoy the tastes of your foods? Are your taste buds working for you? They may be deficient in certain minerals.

More Good News

School sores, frequent colds and tummy bugs: This 9-year-old boy has had no more time off school since taking his natural medicine. His Mum says he is pleasant to be around now – no more angry outbursts!

Numb feet, poor circulation, big belly, always so tired! This 62-year-old man has feeling and warmth

back in his legs and feet thanks to the special leg and feet massage treatment and treatment programme. All is good with his levels of energy now and not relying on coffees through the day.

Fungus feet, buttocks and underarms: Even his skin specialist could not believe the awesome healing this 47-year-old man got after taking to his programme. An incredible sense of wellbeing was the bonus he experienced.

Weight loss/menopause: Her daughter's wedding in November was on her mind when committing to do fat loss/detox programme. This 58 year old lady could not lose weight no matter what she did. Now she feels a complete shift and is looking forward to November.

Mineral Assessment: www.activeelements.com.
User name: 259077 Password: 579819.

Phone Ann Kerr-Bell today for an appointment or enquiry on 021 046 1647 – herbal dispensary / live blood analysis / cellular health analysis / nutritional assessment / gut and liver function testing / allergy testing / heavy metal toxicity testing / hormone testing / neuro transmitter testing. Individualised naturopathic programmes, weight loss, detox, wellness, anti ageing

Coromandel Contract Bridge Club

By Judy Bronlund

We are halfway through our competitions for the year. In July members will be playing for the Individual Championships. We play bridge every Monday evening in the St John rooms. Visitors and new members are welcome to join us.

Contact Val
(07) 866 8084
or Lyn (07) 866 8858

Daffodil Day

By Robyn Dudson on behalf of the Waikato Branch of the Cancer Society

Ann McNair has once again donated a painting for us to raffle for Daffodil Day on **Friday 28 August**. The theme of the painting this year is "poppies" which she thought was very appropriate being the 100-year Anniversary of WW1. It is a stunning painting and is on display in the Coromandel Library all July. Tickets are \$2 each or 3 for \$5, so please do call in to take a ticket. Not only will you be in with a chance to win a lovely original painting, you will be supporting a very worthy cause. Thank you.

**Natural Medical Centre***The natural alternative for all your health requirements*

At Tiki House,
Coromandel.

For appointments,
phone or text: 021 046 1647
or email: annk-b@ps.gen.nz
www.naturalmedicalcentre.co.nz

Ann Kerr-Bell

B.Hlth.Sc. (Comp.Med.)
Adv.Dip.Naturopathy
Adv.Dip.Med.Herb. MNZAMH
Naturopath
Medical Herbalist
Nutritionist
Massage Therapist

Llandem Consulting Engineers

Derek Stewart
C.P.Eng MIPENZ

- Structural
- Civil
- Geotechnical

Ph/Fax: (07) 866 6704
Cell: 027 442 4234

7c Torehina Hts, Waitete Bay



RSA ladies

By Loes Beaver

Our Ladies' Section meeting was held at my home. A lovely afternoon tea followed, then a visit to the Gallery to view the art work of Allan.

The next meeting will be held in July at Marie's home. This works well for our winter months.

I thought I would share this poem with you – read at an Anzac Day parade:

Our flag bears the stars that blaze at night,
In our southern sky of blue,
And that little old flag in the corner,
That's part of our heritage too,
It's for the English, the Scots and the Irish,
Who were sent to the ends of the earth,
The rogues and the schemers, the doers and the dreamers
Who gave New Zealand its birth.

And you who are shouting to change it,
You don't seem to understand,
It's the flag of our laws and our language,
Not the flag of a far away land,
There are lots of people who will tell you,
How when Europe was plunged into night,
That little old flag in the corner,
Was their symbol of freedom and light.

It doesn't mean we owe our allegiance,
To a forgotten imperial dream,
We've the stars to show where we're going,
And the old flag to show where we've been,
It's only an old piece of bunting,
It's only an old coloured rag,
But there are thousands who died for its honour,
And shed their blood for our flag.

Contact Loes (07) 866 8053

RSA and Bowling Club News

By Ian Franklyn and Martin Edwards

After eight months of intensive investigation and deliberation, the time finally arrived for both the RSA and the Bowling Club to vote on whether we should join forces. At Special General Meetings held in May and June, the members of both Clubs voted by significant margins to go ahead with amalgamation.

This means that the Clubs will form a new umbrella organisation to be known as the "Combined Clubs of Coromandel" (CCC for short). The RSA will vacate the premises attached to the Citizens' Hall and will join the Bowling Club at their Woollams Ave property. The assets, land and buildings of both Clubs will be transferred to CCC who will then be responsible for the maintenance and operation of the clubrooms, bar and grounds and all functions therein.

The CCC executive will be elected from members of the "member clubs" and we expect that the initial Annual General Meeting will take place towards the end of the year.

Both the RSA and the Bowling Club will remain as separate "member clubs" with their own executive, management processes, functions and ancillary activities. RSA Club nights will be on Saturday as usual. Bowling Club nights will be on Friday as usual.

New members are extremely welcome. Membership of CCC is automatic when you join one of the "member clubs".

You will not notice any change in the activities which take place at the Bowling Club, such as film club evenings, quiz nights, housie etc, except that we hope patronage will increase.

Anyone interested in joining either club or wishing to use the clubroom please contact either Ian (07) 866 7138 or Martin (07) 866 8886.

We are certain that this amalgamation will ensure the prosperity and longevity of our Clubs for many years to come as well as providing a welcome social outlet for the Coromandel community.

Coromandel - Auckland Ferry



Departs Auckland Pier 4

| | M | T | W | T | F | S | S |
|---------------------|--------|--------|---|--------|---------|--------|--------|
| 6 April - 12 April | 8.45am | 8.45am | - | 8.45am | 6.00pm | 8.45am | 8.45am |
| 13 April - 26 April | - | 8.45am | - | 8.45am | 6.00pm | 8.45am | 8.45am |
| 27 April - 3 May | 8.45am | - | - | - | 6.00pm* | 8.45am | 8.45am |
| 4 May - 31 May | - | - | - | - | 6.00pm* | 8.45am | 8.45am |
| 1 June - 7 June | 8.45am | - | - | - | 6.00pm* | 8.45am | 8.45am |
| 8 June - 20 Sept | - | - | - | - | 6.00pm* | 8.45am | 8.45am |

Departs Waiheke (Orapiu) to Coromandel (approximate times)

| | M | T | W | T | F | S | S |
|---------------------|--------|--------|---|--------|--------|--------|--------|
| 6 April - 12 April | 9.50am | 9.50am | - | 9.50am | 7.05pm | 9.50am | 9.50am |
| 13 April - 26 April | - | 9.50am | - | 9.50am | 7.05pm | 9.50am | 9.50am |
| 27 April - 3 May | 9.50am | - | - | - | - | 9.50am | 9.50am |
| 4 May - 31 May | - | - | - | - | - | 9.50am | 9.50am |
| 1 June - 7 June | 9.50am | - | - | - | - | 9.50am | 9.50am |
| 8 June - 20 Sept | - | - | - | - | - | 9.50am | 9.50am |

Departs Coromandel: Hannaford's Wharf

| | M | T | W | T | F | S | S |
|---------------------|--------|--------|---|--------|---------|--------|--------|
| 6 April - 12 April | 4.30pm | 3.00pm | - | 3.00pm | 8.15pm | 4.30pm | 4.30pm |
| 13 April - 26 April | - | 3.00pm | - | 3.00pm | 8.15pm | 4.30pm | 4.30pm |
| 27 April - 3 May | 4.30pm | - | - | - | 1.00pm* | 4.30pm | 4.30pm |
| 4 May - 31 May | - | - | - | - | 1.00pm* | 4.30pm | 4.30pm |
| 1 June - 7 June | 4.30pm | - | - | - | 1.00pm* | 4.30pm | 4.30pm |
| 8 June - 20 Sept | - | - | - | - | 1.00pm* | 4.30pm | 4.30pm |

Auckland - Coromandel

| | Adult | Child | Family |
|-------------|---------|---------|----------|
| One way | \$55.00 | \$35.00 | - |
| Open return | \$90.00 | \$55.00 | \$235.00 |

Waiheke Island (Orapiu) - Coromandel

| | Adult | Child | Family |
|-------------|---------|---------|----------|
| One way | \$35.00 | \$22.00 | - |
| Open return | \$60.00 | \$35.00 | \$155.00 |

Child definition is 5-15 years inclusive.

Family definition is 2 adults + 2 children.

Please note:

• A Sunday service operates on public holidays.

* A shuttle bus service operates on Fridays from 1st May - 18th Sept 2015

In the event of cancellations 360 Discovery may arrange alternative transport arrangements.

A ferry bus shuttle will transfer you to and from Coromandel Town (Samuel James Reserve car park) and Hannaford's Wharf. There is no additional fare for this service.

Timetables and fares are correct at time of printing. 360 Discovery reserves the right to change fares and departures without notice. Full terms and conditions of travel are available online.

Visit 360discovery.co.nz for more information.

360 DISCOVERY[®]
CRUISES

Coromandel Independent Living Trust

Education & Training Centre

Office hours: 9.30am - 3pm
Mondays-Thursdays

our website: www.cilt.org.nz

contact: Patricia Mikaere or Vanessa Russell
phone: 07-866-7050

visit: Education Training Centre (ETC),
90 Tiki Road, Coromandel

email: ace@cilt.org.nz

**The delivery of all advertised courses is
subject to enrolment numbers.**

July Courses

Learner Driver Licence Preparation

This course will prepare you to sit the test for your learner driver licence. To sit this test you must be at least 16 years old. This course is highly recommended for high school students.

Tutor: Ron Agnew
Venue: ETC - 90 Tiki Road
Date: 9 July 2015
Times: 10am - 12pm
Cost: \$10

Quad Bike & Tractor Safety Training

Back by popular demand! Gain the new regulation safety certificates to drive a quad bike and tractor at home or in the workplace.

Provider: Farmsafe
Venue: Manaia Fire Station, Goldfields Road
Date(s): 14 July 2015 (Quad Bikes)
16 July 2015 (Tractors)
Cost: \$20

August Courses

Weaving with Harakeke

Learn the skills and techniques on how to weave simple and basic articles with flax (harakeke). Take advantage of this opportunity to learn from one of our highly skilled weavers.

Tutor: Briar van Dort
Venue: ETC - 90 Tiki Road
Start date: 4 August 2015
Day/Times: Tuesday 10am-3pm
(1hr lunch break)
Duration: 4 weeks
Cost: \$20

Xero Online Accounting

Manage your own finances and accounts by learning to use this highly recommended online accounting software.

Tutor: Jo Scott

Venue: ETC - 90 Tiki Road
Start Date: 6 August 2015
Times: Thursdays 10am-12pm
Duration: 3 weeks
Cost: \$15

LCQ - Liquor Control Qualification

Gain or renew this ever important qualification to serve alcoholic beverages in our local cafés, restaurants and bars.

Provider: Wintec
Venue: Thames Campus
Date: Thursday 13 August 2015
Time: 9am - 3pm (one day only)
Cost: \$150

Food Safety Handling Certificate

Gain or refresh this ever important certificate that will enable you to serve food in our local cafés, restaurants and bars.

Provider: Wintec
Venue: Thames Campus
Date: Monday 31 August 2015
Tuesday 1 September 2015
Time: 9am - 3pm (2 days)
Cost: \$150

September Courses

Web Design

Design, create and publish your own website. This course will introduce you to HTML and web authorising software: KomPozer, Photo Shop, Web browsers, CCS and JavaScript.

Tutor: Stephen Hutton
Venue: ETC - 90 Tiki Road
Date: 1 September 2015
Times: Tuesdays 10am - 3pm
Duration: 6 weeks
Cost: \$60

Restricted/Full Driver Licence Preparation

This course will prepare you to sit the test for your restricted or full driver licence. To sit this test you must have held a learner licence for more than 6 months.

Tutor: Ron Agnew
Venue: ETC - 90 Tiki Road
Date: 3 September 2015
Times: 10am - 3pm
Cost: \$20

**Only a few more enrolments are
required to have these courses
delivered so register your interest
with us now**

First Aid Full Certificate

Become a fully certified first aider. Build the knowledge, skills and confidence you need to deal with emergencies at home and in the workplace. School students over the age of 16 years are welcome.

Provider: St John
Venue: To be confirmed
Date: To be confirmed
Days/Time: 9am - 4pm (1 day)
Cost: \$185

First Aid Refresher

Refresh your current certificate that reinforces the skills and confidence you need to deal with emergencies at home and in the workplace. Your current certificate must be not be older than 2 years, 3 months.

Provider: St John
Venue: To be confirmed
Date: To be confirmed
Time: 9am - 4pm (1 day)
Cost: \$105

Small Engines

Gain the much-needed knowledge on how a small engine works, how to repair and maintain it.

Day Skipper's Certificate

Skipper your vessel with confidence and knowledge of current boat safety regulations.

VHF Radio Operations

Learn how to operate a VHF radio from your vessel to call rescue services so you, your family and friends may have a safe and enjoyable time out on the water.

Electronic Music Production

Take advantage of this rare opportunity to operate a sound board, to mix sounds and create music electronically.

Ongoing Courses

Career Planning CV and Cover Letter Writing

Improve your chances of getting employment with a functional CV, and job interview skills assessment.
Come in and see us during normal office hours.

Learn for Today and for Tomorrow
E ako mō tēnei rā me āpōpō



Coromandel Independent Living Trust

Coromandel Independent Living Trust (CILT) Resource Centre

By Rebecca Leaker, Resource Centre Co-ordinator

The Resource Centre provides the following great services:

- Transport funding and volunteer drivers for holders of Community Services Cards to attend hospital appointments in Thames or Hamilton.
- The weekly mobility van to Thames every Thursday. Call or come in to book a seat before 1pm on Wednesdays. \$12 koha for adults and \$6 for children for a return trip
- IRD are next in Coromandel town on **19 August** and Maori Land Court on 24 September. Call or come in to the Resource Centre to book an appointment.
- Two fast computers FREE for locals to use between 9am and 3pm.
- Lots of info on health, disability and community services
- Photocopier, printer, scanner, laminator and fax for public use.

Contact: Rebecca Leaker (Resource Centre Coordinator).
Tiki House, 45 Tiki Road.

Hours: 9am-3pm Monday-Thursday

Ph/Fax: 07 866 8358. Email: cilt@cilt.org.nz or

Website: www.cilt.org.nz

Artists in the Making

Hope you are all managing to stay warm and dry. I would like to welcome Brian and Wendy to our group and farewell Mary, bringing our numbers to 17. It is lovely seeing all the cool work being produced in the warm, cosy studio. We had a soap-making workshop with Lisa earlier in the year, and the soap is now ready for us to play with carving it. So the studio now also has lovely smells of the soap to greet us and we are coming up with all sorts of designs.

We have had a lot of clothing and other goodies donated recently, which I also share with the Work Co-op, so a big thank you to all those people who give so much to us.

Thought for the day: "You can't use up creativity. The more you use, the more you have." Maya Angelou

Contact: Anne Bowden (ATM Co-ordinator), Whitianga
Ph: (07) 866 0032.
Email: atm@cilt.org.nz or
Website: www.cilt.org.nz



The photo is a mosaic done by an Artists in the Making participant, Lorraine

Te Ahi Kaa Social Services

By Jacquie Hamon

He aha te mea nui o te Ao? He Tangata! He Tangata! He Tangata!

Nga mihi nui ki a koutou.

This is a busy time of the year for us and due to time constrictions this article is quite short.

We have begun running our Raising Totara wananga again, and it is proving to be as popular as the first time around. There are participants from last year and rangatahi who have recently joined. It is a pleasure to have the young ones on the wananga with us as they are unafraid to participate and bring a new breath with them that enlivens proceedings.

There is still room for more people to join – call our office if you are interested.

Finally, nga mihi nui me te aroha nui - our sincere congratulations to Riana Manuel the new CEO of Te Korowai Houora O Hauraki.

We are providers of whanau/family focused services that promote the welfare and safety of tamariki/children, offer counselling services for whanau/family and individuals, and deliver programmes and wananga that support whanau/families. Tiki House, 45 Tiki Road - Ph: (07) 866 8558 – email: takss@xtra.co.nz Mon-Fri, 9am-3pm. Call in to chat or make an appointment

SeniorNet Coromandel

By Lois Beaver

We welcome our new members to SeniorNet, and now that the AGM is over we can really set about setting up our courses.

Our tutors have been helping members, and this is always an ongoing thing, as the more you learn with IT the more you want to learn.

If anyone has any queries just contact me and I can pass any requests on to our tutors.

Contact Loes
(07) 866 8053

Coromandel Town Information Centre

By Sandra Wilson

By the time you read this the shortest day will have come and gone. Then the days will start to get a little longer and we know spring is not too far away.

You might need to get your winter woolies on for the Illume Festival this year: **Friday 3 and Saturday 4 July**. Music, lights, entertainment, night markets, fireworks, parade and much, much more. Come light up and join in the festivities. Last year was great and this year looks like it's going to be even better.

With the colder, shorter days we have still welcomed 1500 people through the Centre for May. Again up on last year's figures.

Over winter 360 Discovery Ferry operates on Saturdays and Sundays only. It departs Hannaford's Wharf at 4.30pm. On Fridays there is a bus at 1.00pm but you'll need to check to see if the bus is operating.

InterCity buses are operating as follows: 7.30am from Coromandel via Thames to Hamilton seven days a week; 11.17am from Coromandel to Whitianga and Thames Sunday to Friday, with no service on Saturdays till October.

Keep warm and I'll see you at the Illume Festival.



Steelcraft Ltd

Precision and general engineering

Steve Norris
Paul Baylis
75 Wharf Rd
Coromandel
Phn/Fax 866 7710

James Drainage '97 Ltd

- Bobcats • Skip Bins • Excavators
- Chainedigger • Septic Tank Cleaning

1.5 to 12
Tonnes



1040 Tiki Road,
PO Box 13,
Coromandel
Phone: 866 8308
Fax: 866 7595
Mob: 021 726 850
jamesdrainage@xtra.co.nz

Library News

By Raewyn McKinney

As I mentioned last month, a lot of thought has gone into the heating of the library over recent weeks. By the time this issue of the Chronicle is distributed, we will have new heaters installed. We certainly hope these heaters will make visiting the library a more pleasant experience on the cold damp winter days that are ahead, as well as providing a more pleasant working environment for our volunteer librarians. Unfortunately, the new floor covering that has been chosen has had to be ordered from Australia, so it will not be fitted before the cold weather sets in. At this stage it is envisaged the floor covering can be replaced sometime in August, but hopefully the new heaters will do the trick in the meantime.

New additions to the library this month include titles from Maggie Alderson, Jeffery Deaver, Quintin Jardine, Dennis Lehane, Di Morrissey and Lesley Pearce.

New arrivals also include:



Flood of Fire by Amitav Ghosh – The thrilling climax to the Ibis trilogy that began with *Sea of Poppies*. It is 1839 and tension has been rapidly mounting between China and British India following the crackdown on opium smuggling by Beijing. *Flood of Fire* follows a varied cast of characters from India to China, through the outbreak of the First Opium War and China's devastating defeat, to Britain's seizure of Hong Kong. It is imbued with a wealth of historical detail, suffused with the magic of place and plotted with verve. A compelling conclusion to an epic and sweeping story.

Church of Marvels by Leslie Parry – “*The Night Circus* meets *Water for Elephants* in this compulsively readable debut. It's late on a warm city night when Sylvan Threadgill, ...



pulls a terrible secret out from the filthy hollows: an abandoned newborn baby... Odile Church is the girl-on-the-wheel, a second-fiddle act in a show that has long since lost its magic... spectacular Coney Island sideshow: *The Church of Marvels*...

Alphie wakes up groggy and confused in Blackwell's Lunatic Asylum. The last thing she remembers is a dark stain on the floor, her mother-in-law screaming... On a single night, these strangers' lives will become irrevocably entwined, as secrets come to light and outsiders struggle for acceptance... Leslie Parry makes turn-of-the-century New York feel alive, vivid, and magical in this luminous debut. In prose as magnetic and lucid as it is detailed, she offers a richly

atmospheric vision of the past marked by astonishing feats of narrative that will leave you breathless.”

Chappy by Patricia Grace – “A literary milestone: Patricia Grace's first novel in ten years. Uprooted from his privileged European life and sent to New Zealand to sort himself out, twenty-one-year-old Daniel pieces together the history of his Maori family.



As his relatives revisit their past, Daniel learns of a remarkable love story between his Maori grandmother Oriwia and his Japanese grandfather Chappy... In this touching portrayal of family life, acclaimed writer Patricia

Grace explores racial intolerance, cross-cultural conflicts and the universal desire to belong. Spanning several decades and several continents and set against the backdrop of a changing New Zealand, *Chappy* is a compelling story of enduring love.”

Don't forget; you can drop your damaged books in to the library for a quote for repairs. Ann donates all money raised from book repairs to the library.

Library Hours are: 10am to 1pm on Monday, Tuesday and Thursday; 10am to 4pm on Wednesday and Friday; and 10am to 12 noon Saturday

Each Change of Many Coloured Life...

By Jocelyn Davey

As Debbie has said change is everywhere.
The Four Square is open with room to spare.
In the Rings Road block past Te Tiki Street
Three lovely old villas are looking a treat.

At Phoenix House, too, there is a change:
Riana has gone to Te Korowai, Thames.
She has gone from a six year spell
and Ruth will manage very well

Till a new manager is in place,
when Ruth will have a smiling face.
The Winter came last week one day
And now I think it's here to stay.

I quite like Winter. I have more time
for reading and writing an occasional rhyme.
The garden's at rest preparing for Spring
Midwinter is gone and Illume's had its fling.

All Winter's sport is in full flight
Plenty to watch on TV at night.
Thick soups and stews are on the menu
Both at home or some other venue.

As the poet said
“If Winter comes, can Spring be far behind?” PBShelley

**Poetry
SPOT**

COROMANDEL CABS

Service with a smile

Owner/Operator: Jane Warren

Phone 07 866 8927 Mobile 021 230 5995

Email jane@coromandelcabs.co.nz

www.coromandelcabs.co.nz

The Mercury Bay Community Choir presents

A WINTER SING

Saturday 18th July
7pm, Town Hall, Whitianga

pre concert refreshments from 6:30pm

\$15 ADULT
UNDER 18 FREE

TICKETS AT DOOR
PAPER PLUS, WHITIANGA

www.creativemercurybay.co.nz/organisations/mercury-bay-community-choir

WANT

NATIVE NURSERY & EDIBLES
WAITAIA RD, KUAOTUNU

A wide range of beautiful natives,
palms and fruit trees.
Potting mix, compost, mulch, chook manure.
Open Thursday- Sunday 9-5 or by phone appointment
Please phone Claire & Colin Hill 07 869 5910

Andrea Ryan AREINZ North Coromandel Agent

BAYLEYS



A Year in the Northern Coromandel

We are celebrating a year of Bayleys Real Estate being based up here in the Northern Coromandel and a what a busy year it has been..!

Great to see the local property market pick up with Bayleys facilitating all but two of the Northern Coromandel sales in our first year.

We currently have an exciting and diverse range of amazing property for sale - check out the awesome selection online and contact me to discuss if you are considering a coastal property investment.

Something for the Buyers...

Chances are, you will know plenty of people with 'Coro Envy' - loving this place with a dream of living the lifestyle we enjoy everyday.

Refer a successful buyer to me during Winter 2015 and receive a \$100 cash referral and \$100 to your favourite local recognised community organisation. Contact me for details.

Something for the Sellers...

Earn Airpoints Dollars™ when you sell your property with Bayleys. We've teamed up with Airpoints™ so now Vendor's can earn 1 Airpoints Dollar™ for every \$2,000 of the sale price.



Get Airpoints Dollars™ when you sell with Bayleys.

Details online at www.bayleys.co.nz/airpoints

Boulder Bay....

Incredible selection of coastal waterfront & cliff top sections... Forest, ocean views & privacy on sale now from \$295,000

Come see for yourself..!

#BoulderBay #NorthCoro

www.bayleys.co.nz/262690

BAYLEYS

Andrea Ryan AREINZ

North Coromandel Coastal Property Specialist

+64 21 484558 | +64 7 8668138 andrea.ryan@bayleys.co.nz

www.facebook.com/northcoromandel www.bayleys.co.nz

Bayleys Real Estate Whitianga - M H Realty Ltd - REAA Licensed 2008

Coromandel Lions

By Lion Lyn



As we are now past the shortest day we shall look forward to a new season! Starting with Coromandel's very own "Festival of Light" beginning Friday 3 July. If you wish to enter the parade call Trish (07) 866 8785 or visit the website for details. We will have hot mussel fritters and corn fritters for sale outside the local butcher shop for an early dinner, a fundraiser for our local St John on the Friday after 5pm. See you all there with lights on!

On to Club news – Welcome back Peter, we have missed you and your stirring ways. No wonder the Lion Rock award went to Pam for keeping you on track with your recovery. Well done and thankyou Pam. Our June dinner meeting was very special with Jamie-Rose Leckie as our guest speaker, delivering a very enthusiastic and inspiring account of her recent travels to Africa. A diplomatic ambassador in the making. We will look forward to hearing a lot more from you, real soon. On the home front, we are still collecting cantabs and wine bottle tops and the bit around the top of the bottle as a fundraiser for kids needing treatment for kidney disease. Such an easy thing to do that can make a real difference. The drop off point is The Bizarre shop. Also ongoing is the Friday night raffle at the Top Pub, firewood orders for later on and next season, and whatever else is asked of the Lions to consider, as we are here for our community. Till next time, see you at the Illume Festival – let's make it a great weekend!

Coromandel Budget Advisory Service

By the Budget Team

All change at the Budget office. Maureen had her last day at the beginning of June and some of us don't know what we'll do without her. We look forward to welcoming her onto our Governance committee once she returns from the UK in October.

Meanwhile our new budget adviser started her training in Hamilton at the end of May and is thoroughly enjoying it. All going well she will be ready for supervision by the beginning of July and so join our little team.

The Foodbank was fortunate to be given all the chilled and frozen goods when the top supermarket was liquidated last month and we were able to put some real luxuries into the food parcels.

The Waiter's Revenge Dinner is to be held on Saturday night, **8 August** at the Coromandel School Hall. Proceeds will go to the Foodbank. This should be a hilarious night, with known waiters from around the town getting a little of their own back on customers (you guys!) after a long busy summer. Tickets will be a set price (\$50, we think) and for this you will get a lovely meal (vego option available) and at the end of the night we'll push the tables back and have a bit of a dance. There will be a bar available.

We are hoping the community will get fully behind this latest fundraiser. Tables will be tables of 10, so please assist by asking 9 others with whom you would like to have a fun night. Then, when we have our tickets organised, you'll be ready to book your table. Any queries, talk to Leigh or Caro at Budget Advice.

The Budget Service is an incorporated society belonging to the New Zealand Federation of Family Budget Services. If you wish to make an appointment, the Budget phone number is (07) 866 8351 where you can talk to Anna, Caro, Leigh or John. The office at 950 Rings Road is open Monday to Friday 11am-2pm and other times by appointment. The Budget cell phone number is 022 018 0849 – we reply to texts and messages during office hours.

Animal Rescue Thames

By Alice and John Parriss and Wilbur wabbit

Firstly thank mews for the donations of winter bedding, and cat and kitten food.

Huge thanks to Tara for her help with our cats and also Four Square (lovely new shop!).

Homed – Nina our foster kitten, homed to a lovely lady who adopted from us 13 years ago. We hope that Nina is everything and more and both cats are getting along. We love updates on how the cats we home are doing so we look forward to hearing news from her on Nina.

Desexed – Bella, our mum cat, was desexed, and her five kittens had a wonderful day without mum and were offended by her "smell" when she got home. A few purrrips and all was forgiven. The five kittens are gorgeous and now seven weeks old; truly beautiful kittens, four boys and one girl, will be desexed then released.

Newbie – dear husband calls me to go see what Gobe cat had- going outside I see him playing with something small and black, oh dear, grabbed a net and got it, one very, very small rabbit! Hmmm okays, no injuries but too tiny to release, it wouldn't stand a chance against cats and pesky pukekos. So we managed to find out through Google and photos that it's about three weeks old and is loving syringe feeding the goats' milk formula we use for the rescue kittens.



I hold true gratitude to a young girl who four years ago introduced me to rabbit world, baby rabbits, and what to feed and how to care. Her sister and she introduced me to the rabbit world which has remained a very fond memory and served to teach me about rabbits, something I had had no interest or experience in. Through these two I gained experience and confidence. Little do they know how great an impact an 8- and 10-year-old had on an adult. Huge thanks to the girls and hopefully our baby bunny will survive and grow into a loving pet for someone!

Cattery Mews – our four tabby spayed girls and trio from Coro are all now half grown. We have two pairs of tabbies, which due to them being older we will look at a cattery special to clear the four tabbies, due to them needing to go in pairs. \$75 a pair or if a farm/lifestlye loving home comes up we would look at \$120 for the four tabbies. The Coro trio we would love to remain together, \$175, for the three. This only just covers desexing, nothing else, so its a one-off special to get them forever homes ASAP.

Wanted – donations of cat/kitten biscuits – Whiskas, Purina One chow, Friskies. They love Hills Science but those come at a cost! Also tinned/sachets for cat and kittens.

Most importantly homes for them all, and winter bedding for them too.

Meow furr now.

Any enquiries contact Animal Rescue Thames, 532 Thames Coast Road, RD 5, Thames 07 868-2907



Coromandel Garage Ltd

What we offer:

- Service and repairs on all makes and models
- WOF's
- Exhaust fabrication
- Truck and tractor maintenance & repair
- Motorcycle WOF's
- Pensioner WOF's \$40
- Call out's & tow in's
- All tyres
- Fuel
- LPG
- Trailer hire

BP Card Accepted

Best Value for your money
with over 40 years of combined experience from our two fully qualified mechanics.

Coromandel Garage Ltd, 226 Wharf Rd, Coromandel. 07 866 8736

Museum News

By Raewyn McKinney

The AGM of the Coromandel School of Mines & Historical Society Inc was held in June at the Coromandel RSA rooms. We thank the RSA very much for the use of their rooms for this meeting. Although we did not have a large group of people in attendance, it is encouraging that several people registered their apologies for this meeting.

Most of the existing committee were willing and able to continue for another year, but we do have a couple of changes. Susan Swan has resigned from the committee due to increasing work commitments. We thank Susan for her past work, in particular for creating business cards and membership cards for the Society. Susan's resignation left a vacancy on the committee, which has been filled by Alison Rowe. Alison has been a long standing member of the Society, who is now living in Coromandel, so is able to take a more active role. I am sure she will be a valuable addition to our committee. Ian Franklyn has stepped down from vice president. We thank Ian for his past work, and are pleased he has agreed to continue on the committee. Thanks go to Frank for taking on the vacant role. We look forward to another busy and successful year in the museum.

The new committee is: President - Sue Wright; Vice President - Frank Mead; Secretary/Treasurer - Raewyn McKinney; Committee Members: Judy Bronlund, Ian

Franklyn, Jennie James, Val Macdonald, David Phillip, Alison Rowe, Jim Sharp and Sandra Wilson.

From "The Advocate" 8 July 1949:

"Monument Unveiled - Ceremony at Ahimia - Tribute to Maori Soldier

A monument in honour of a Maori soldier, Sergeant Henry Judah, who was killed in action at Sollum, Libya in November 1941, was unveiled at Ahimia recently. The stone stands on the hill overlooking the sea in front of the new residence of Mr & Mrs T. Collier, the soldier being Mrs Collier's brother.

The ceremony, which was conducted by the Rev E. Leef, began at 11 a.m. with the playing of the National Anthem by the Coromandel Band. The memorial was unveiled by Brigadier Brenner for the pakehas and Mr J Brown for the Maoris.

Mr Leef addressed his people in Maori and later translated his speech into English. Brigadier Brenner then paid tribute to the memory of the fallen hero and the Maori race generally, and Mr Brown, who served with the deceased in the Middle East, and Mr Turei Parker of the Native Affairs Department, also paid tributes to his memory.

A Maori welcome was sung by Missus Brown and Miss Leggan, and a wonderful repast, cooked in true Maori fashion, was served to all present.

The guests, numbering about 300, included representatives of the Returned Services' Association, the Women's division and other local organisations, and relatives

and friends journeyed from as far afield as Wellington and Taranaki."

The museum is now closed for the winter, and will reopen at Labour Weekend.

MUSEUM MONTHLY COMPETITION "Who What Where When"



Please identify this photo and give us as much information as you can. Bring or post your entry to the Information Centre with name and contact details by **Friday 31 July 2015**. All correct entries will go into a draw for a voucher from Coromandel Four Square.

Our May competition was won by Con Anderson, who correctly identified the three statues standing in front of the Council Building. These three carved teko teko were unveiled in October 2011.

Good work Con, and thank you to all who entered the May competition. Good luck to all for this month.



**REPAIR - MAINTENANCE - SERVICE
OF
SMALL ENGINE EQUIPMENT**

specialising in
**LAWN 'N' GARDEN POWER PRODUCTS
&
LAWN MOWING / GROUNDS CARE**

service / repair

| | |
|----------------|------------------------------------|
| Ride-on Mowers | Self propelled / Push mowers |
| Hedge Trimmers | Line Trimmers |
| Rotary Hoes | Chainsaws / Sharpens |
| Generators | Pumps |
| Blower vacs | Auxiliary Outboards (up to 15hp) |

Coromandel Town - keeping it local !

Shane
021 0238 0347



Paddy
021 662 920


Tangiaro Kiwi Retreat
Port Charles, Coromandel



Cafe, Restaurant and Bar Operating Hours

Tuesdays, Wednesday & Thursday

10am - 4pm

Friday & Saturday 10am - 7pm

Sunday 10am - 3pm

Happy Hour 4pm - 6pm

Closed on Mondays.

Bookings essential for dinner.

**Relaxcoro
massages
available
onsite**

**1 hour north of
Coromandel Town**

**LODGE
ACCOMMODATION
NATURAL
SWIMMING HOLE
WIFI & SJOELBAK**

1299 Port Charles Road
RD 4 Coromandel
Ph 07 866 6614
info@kiwiretreat.co.nz
www.kiwiretreat.co.nz



Sold...Sold...Sold..!



Help...

Help..! We need your property..!

After a fantastic start to 2015, with heaps and heaps of sales, we are seriously low on listings...

If you've been considering a change, up-sizing, down-sizing, re-locating, then we would like to help.

We can provide you with a 'free of charge' appraisal, so you know exactly where your property sits in the current market.

**FREE APPRAISAL
FREE TRADEME AD
NO \$500 ADMIN FEE**

For all new Exclusive listings in July...

Contact our Team for a FREE Appraisal of your Home...

To Let...

2 Bdrm cottage - \$275/wk

1 Bdrm basement flat - \$230/wk incl. power & water

1 Bdrm s/c studio flat - \$180/wk

2 Bdrm modern cottage - \$230/wk

Call into our office for further details and a tenancy application form.

Port Charles



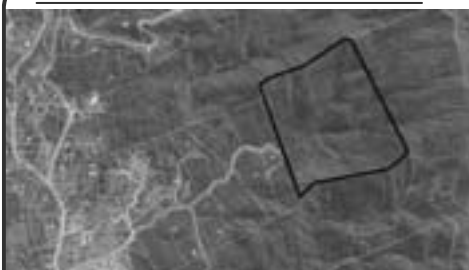
Beauty is in The...

...view! Limited budget but still need a great big bach for all the family? This could be your new pad - tons of room, tons of potential! Grab it now and have it ready for the summer influx!

CO1665

\$299,000

Coromandel



Remote!

33.4 hectares of bush to do with almost as you please. Located up the far end of Buffalo Rd, but with no vehicle access, this very private block is well worth viewing - bring boots or the bike or the chopper!

CO1703

\$195,000

Papa Aroha



Coastal Sanctuary

The ultimate in exclusive, private & luxury coastal living. Views, sunshine, bush, gardens and an abundance of fresh sea air! Stunning home set on an equally stunning 2 hectares.

CO1664

\$1.5-\$2M

Sales, Rentals, Management, Advice

Any Queries - Drop in and See our Great Team!

Harcourts

100% CORO LTD MEMBER

Coromandel



Greenhills Estate

With fully serviced sections of manageable size (up to 1273m2), lush loamy soils, quality heritage themed streetscaping, exceptional rural views & sunsets - Come & experience Greenhills for yourself...

CO1694 from \$140,000

Coromandel



The Good Life!

The perfect pozzie for an Artist or Craftsperson... 2 brm weatherboard 1960's home with separate studio, privately set on 4047m2. Some TLC is required - bring your own paintbrush!

CO1671 \$410,000

Coromandel



When Only the Best Will Do

Brand new 3 bedroom home set on a compact section within Greenhills Estate. Easy stroll to town from this popular area. This really is quite nice, come and add your flair!

CO1699 \$420,000

Coromandel



A Place to Call Home

A very tidy property, situated on a compact, 600m2 well maintained section. A very practical 2 storey home with 3 brms, 2 bthrms, open plan living, office/rumpus area and under cover parking...

CO1684 \$365,000

Te Rerenga



A Leisurely Lifestyle

With a 3 bedroom, 2 bathroom, open plan home & attached garage sitting on 1.37 hectares, there is plenty of room for all the family on this attractive lifestyle property...

CO1691 \$425,000

Whangapoua



Let Me Entertain You

Perfectly private & modern, 3 brms, office, open plan living, superb kitchen, huge entertainers deck... Too many features to do it justice on paper...come and see it to believe it!

CO1674 \$690,000

Papa Aroha



Luxury Retreat

Hankering for a Dream Home set in absolute seclusion on 79ha with a cinerama seascape and all done for you? We invite you to inspect this design and engineering masterpiece!

CO1692 \$1.95M

Papa Aroha



Paradise Found - Coastal Coromandel

10.24 ha, choice of easy house sites, brilliant 4 bay barn, bush and grass..

Price by Neg over \$399,000

23.80ha - easy rolling grassland & magnificent elevated site..

Price by Neg over \$499,000

39.5Ha - virtual waterfront, big barn, huge views from outstanding sites..

Price by Neg over \$799,000

www.coromandelproperty.co.nz CO1697

Visit our Website & enter the property ID to view additional photos & details
www.coromandelproperty.co.nz ~ coromandel@harcourts.co.nz



Mana Update

By Penelope Carroll

"We often forget that we are nature. Nature is not something separate from us. So when we say that we have lost our connection to nature, we've lost our connection to ourselves." Andy Goldsworthy

After a very busy first half of the year, Mana Retreat is closed during July for a month of breathing space, building maintenance and landscaping. Inside the Centre we are installing new showers and handbasins (with beautiful hand-milled macrocarpa bench tops). New curtains are going up in the library and the bedrooms – and there will be new duvets for the beds. Outside, the landscaping work begun at our Winter Solstice Working Bee, in the area below the Centre, will continue, with a new path through the vegetable and flower gardens connecting the Octagon to an outdoor movement and meeting area on the terrace below. Embraced by bush and mountain – Moehau majestic to the North and Pukewhakaratarata sheltering us in the South – the new movement and meeting space surrounds us in natural beauty.

As Andy Goldsworthy reminds us in the quote above, "if we have lost our connection to nature, we've lost our connection to ourselves". Inherent in Mana's vision of providing a nurturing environment for "the exploration and awakening of consciousness, the unfolding of our creative and healing potential and realisation of our essential unity", is the understanding that we are not separate from nature, that we are nature; and also, that being surrounded by the beauty of the natural world outside of ourselves helps in the inner "unfolding of our creative and healing potential".

The wonderful Winter Solstice ritual facilitated by Juliet Batten at the Working Bee last month was another reminder of the external seasonal rhythms of nature with which we are intertwined. How easy it is for city-dwellers amongst us to forget when we are caught up in the busyness of our everyday lives. Thank you Juliet! And a huge thank you to all of the people who came to our Working Bee. Not only did we have a lot of fun and sharing, but we also got heaps of essential work done, inside and out.

Here is a wonderful (and seasonal!) soup recipe from the Mana Kitchen:

Maria's Beetroot Soup

6 beetroot, 2 potatoes and 1 carrot, cubed; 2 celery sticks, sliced; 2 onions chopped; 2-3 cloves of garlic and 1 tbsp of grated fresh ginger; 1 tin tomatoes in juice; 1 tbsp olive oil; water to cover; pepper and salt to taste.

Fry the chopped onions with the celery, carrot, garlic and ginger. Add beetroot, potatoes and tomatoes, and cover with water. Simmer until soft. Remove from heat and blend. Add salt and pepper to taste. Enjoy!

www.manaretreat.com
retreats, workshops, events

Whole weekends of relaxation... just on your doorstep...

Choose Aug 21-23 or Sept 25-27 & experience Mana Retreat Centre: natural beauty, a warm bed & delicious vegetarian meals. Meditate, walk the land or make music; read, reflect or write; relax in the sauna, by the fire or with a free yoga/meditation session.

\$190 per person/weekend includes all meals and accomodation in our comfortable lodges (massage and watsu are also available as extras)

be@manaretreat.com 07-866-8972

Organic Food Club

Looking for organics at lower prices? Buy in bulk at the Colville General Store.

The Colville General Store Food Club was started in 2012 with the aim to offer our community bulk goods (predominately organic) at a lower price. This has been a successful experiment and we are now ready to expand the number of people benefitting from it.

How does it work? Every three months, a form is available from the store or emailed out for customers to place their order and return along with their payment. Customers must have an account in credit by the amount of their order. Goods are listed in minimum order amounts (e.g. flours and grains 3kg, nuts and dried fruit 1kg). Once the goods arrived we divide them up and let everyone know it's time to pick them up.

The Colville store has long been the hub of North Peninsula community, offering a place for gathering, providing information, offering a large range of merchandise and of course, it's iconic bulk room.

As well as the Colville Store, you can also visit the new farm shop, café, gallery, etc, and spend some time on one of the northern Peninsula's stunning beaches.

If you can't make it up to Colville, we are happy to send your goods out to you on the Rural Delivery truck.

The next food club forms will be available in August for a September delivery.

If you are interested, have any queries or would like a sample form sent out to you, please contact Hannah, Monday-Wednesday on (07) 866 6805. Or email colvillestore@colville.org.nz.

Colville Store opening hours: Monday - Sunday 8.30am-5pm

Community Gardens

By Louise Kittleson

Winter is coming. Autumn has turned itself gold, orange, brown, and then blew itself out. The stars have moved closer to us as they seem to shine brighter. What will their message be this winter? We may not hear their music, but the earth is still listening.

Wendell Berry writes in his Manifesto: The Mad Farmer Liberation Front, "As soon as the generals and politicians can predict the motions of your mind, lose it. Leave it as a sign to mark the false trail, the way you didn't go." As Aotearoa gears up for farm intensification with its new dam proposals and corporate owned farms, spare a thought for the small farmers who still produce 50% of the world's food, while agribusiness produces only 30% of the world's food and hoovers up 80% of the subsidies and 90% of the research budget (Colin Tudge Earth Matters, April 2015). Now is the time to celebrate our soils, to celebrate our young farmers and decommmodify the land.

There will be three weekend Earth Building Workshops at the community gardens held in July by Henery Mackeson starting on the 11th. Henery is a long time earth building legend and will be teaching adobe in-situ, brick making, cob, and plaster. If interested phone Louis at (07) 866 8866.

Get your garlic and onions in the ground. Make some compost. Gather seaweed. Listen to the stars. Commune with the Earth Mother. See you at the gardens. Every Thursday afternoon.



SCOTT REVELL

BUILDING CONTRACTOR



- New Homes
- Renovations
- Additions \ Repairs
- Bathrooms
- Decks \ Fences \ Landscaping

Prompt Professional Service
srevell2010@hotmail.co.nz
027 861 6592
COROMANDEL

Coromandel Walking Group

By Irene Dunn

Never mind the wind or the showers - tie up your laces and come walking for an hour with a great bunch of ladies. We do enjoy ourselves especially when there is a nice cup of coffee at the Success Cafe to be had at the end of the walk. We have only rarely been caught in the rain, but at this time of year we hardly lot take our jackets and brollies and off we go!

Interested in doing a bit more exercise twice a week? Come and join us each Tuesday and Thursday at 9am outside the Lotto Dairy - phone the number below for more information. We'd love to have you join us.

Contact Ruth (07) 866 7246

Monday Walkers

By Irene Dunn

A new group of walkers has been formed for a longer walk in the bush, on beaches or other tracks all around the area. All women and men are invited to come along - we meet each Monday, usually at 9am, to car pool and aim to be home again by 1pm. However sometimes we do longer walks when we are home by 3-4pm. Contact Irene on the phone number below for more info.

One recent walk was from Whitianga, over on the ferry and walking up Ferry Landing road to the bush track that took us up to Shakespeare Cliffs. What a spectacular view - we really do live in paradise here on the Peninsula! A short walk down the bush track to Cooks Beach and then we walked the length of the beach to the Reserve at the far end where we had a welcome break for lunch. It was one of those days when the sun was shining and the sea was like a mirror that you could just keep on walking and walking.



Poster girl Libby relaxing at Flaxmill Bay

However our "poster girl", Libby, felt that a quick rest in the colourful wooden chair over looking Flaxmill Bay was just the bee's knees!

You are most welcome to join us - happy walking everyone.

Contact Irene 07 2119 758 (landline)

Coromandel Hikers

By Don Hughes

Ten years ago I wrote a short (very short) piece for the Chronicle marking the tenth "birthday" of what was originally dubbed the Monday Walkers. About that time, though still meeting at 9am on Monday at the Hauraki House car park, it had become known as the Coromandel Hikers' Group.

Remarkably it is still meeting on Mondays and still able to complete many of the walks of fifteen to twenty years ago. Not all but definitely most! Moreover, many of these "walks" would provide a sweaty outing for people some years younger than the current average age of 79.

Yes, the years have shortened the stride of some of us - especially up hill - but with there soon to be six guys of 80 plus it's not too dusty.

The origins of the group lie in the road walking exploits of Arne Piesse, Owen Irwin and the late Ian Cullen. Details of their exploits are given in one of the True Tales of the Coromandel series.

The future of the group lies in the feet of the 60/65-year-olds who feel they can still manage a "good walk". Come along any reasonably fine Monday to the Hauraki House car park at 9am. Just remember not to leave us too far behind.

New contact for Coromandel Hikers is Colin Campbell (07) 866 7137

Papa Aroha Engineering LIMITED

Now servicing all makes & models of
Lawnmowers,
Ride-on Mowers,
Chainsaws and Sharpening,
Gen Sets,
all Small Engines,
Boat Tractors
and Quad bikes



Light Engineering & Machining

MIKE MCCALL • 07 866 8469 • 027 223 7919

1060 Colville Road, Coromandel
Email: mikepapeng@gmail.com



Castle Rock Cafe
SH25 Te Rerenga
Phone: 07 866 4542

Follow us on
Facebook for our
great specials.

Amazing food, great
service and value for
money. We have it all!

Sorry, we will be closed the whole of July for a break.

Coming up in August

- New menu
- French banquet night
- A degustation dinner with Lake Chalice Wines

Phone for more details or to book now.

Hours

Open Monday 10am-4pm,
Thursday 10am-4pm,
Friday 10am-9pm,
Saturday 9am-9pm,
Sunday 9am-4pm,
(closed Tuesday and Wednesdays).



Driving Creek Doings No.172

By Barry Brickell

The end of May was a significant day for both the railway and for my two Auckland exhibitions which finished on the 29th. At Orexart dealer gallery in Auckland a few paintings sold, one of which is returning to Coromandel, or Colville to be precise, the second time in my life that a painting has sold. As age advances, the hard physical work of handling stiff clay can now start to give way to the handling of paint; a lot easier but still very challenging.

Some readers here may recall David and Christine Black who opened Apollo Electronics in the shop formerly owned by Merv Darling, our butcher in those days. Well David, now Dr Black is Chairman of Directors for the railway who has been responsible for our board meeting during which we interviewed applicants for the position of General Manager. Needing a younger person with experience in engineering and railways, we selected John Gurney who will take over in July. John has been setting up a narrow-gauge tourist railway at Denniston on the wild West Coast with a train he designed to take tourists into an underground coal mine that is no longer in use. Before this, he was managing the "Rainforest Express", a narrow-gauge tourist railway in the Waitakere Ranges west of Auckland. Unfortunately it had to close down because of rock falls in the tunnels. Taking water for the city from the Nihotupu dam, the railway laid alongside the pipeline. Recently, John made an introductory visit to the railway to meet the staff. This has enabled me to step down as a director so that after 32 years with the railway I can now spend more time in the studio.

With Paul Lorimer back in Okinawa, the potteries has gone into low gear except that Paul Maseyk has had a successful wood firing of his very distinctive "story-telling" finely decorated pots. Paul Lorimer is due to return late December for this third 5-month stint here when we hope to be using a good quality clay that was recently exposed at the local quarry. There are not many potters digging their own local clays these days as it comes already prepared in plastic bags; a lot easier if you can afford it. But if distinctive character is important, homemade clay is the answer. More of this later.

Have a winter break - if you can,
Barry

Scott Simpson MP for Coromandel

What a fantastic addition the new Four Square supermarket is to our town. It's been a long time coming, too long in my opinion. I was very pleased to cut the ribbon and officially open the new store.

Four Square has been serving the Coromandel for 30 years and the new store will provide a greater range of products and provide much better facilities for shoppers both local and visiting.



There is nothing about the new store that detracts in any way from the character or heritage of Coromandel town.

Speaking of new, fresh approaches it was great having my colleague Maggie Barry visiting the electorate recently to promote a new approach to protecting kiwi. A new \$11.2m investment is being made by government to help ensure our national bird is safe from extinction.

To boost community involvement, the Department of Conservation will work with Kiwis for Kiwi, an independent trust, to distribute these funds to existing and new kiwi protection groups like our own Moehau Environment Group and Project Kiwi.

The vision for the new initiative is to turn the 2 per cent annual kiwi population loss into at least a 2 per cent annual population increase. I am sure we can do even better than this target as we have so many committed volunteers here on the Coromandel Peninsula.

The world economy is far from secure. But even during the toughest economic times, investing in health has been a hallmark of all seven Budgets presented by Finance Minister Bill English.

During her visit, Maggie Barry also made an announcement confirming a gift to help fight Kauri Dieback. Funding to help protect our native kauri trees will increase by nearly \$500,000 following a very kind donation from the Tindall and Aotearoa foundations.

Sir Stephen Tindall and Julian Robertson will contribute \$480,000 over three years to protect kauri trees. A third of New Zealand's remnant kauri are here on the Coromandel so this funding will be of benefit in our local patch.

The donation will primarily be focused on assisting private land owners. Many of our most precious kauri are on private land and some landowners simply don't have capacity to provide resources to fight dieback on their land.

As well as the focus on trees located on private property the donation will see \$100,000 a year spent directly funding hygiene stations at track entrances and on public education. Another \$60,000 a year will be used to support local kauri protection groups, schools and iwi in their efforts. It's a great initiative that will greatly benefit us over time.

Please never hesitate to make contact with me if I can be of assistance with any matter. For an appointment you can phone my electorate office on (07) 868 3529 or email: mpcoromandel@parliament.govt.nz.

Authorised by Scott Simpson, 614 Pollen St, Thames.

Driving Creek Railway

**Trains depart at 10.15am and 2pm daily
with extra trains at 11.30, 12.45 and 3.15
for 5 or more adults.**

BOOKINGS ADVISABLE – Phone: 07 866 8703
email: railway@drivingcreek.co.nz
www.drivingcreekrailway.co.nz

380 Driving Creek Road, Driving Creek, Coromandel, 3506

MASSAGE THERAPY COROMANDEL



- ★ Deep Tissue Remedial Bodywork
- ★ Relaxation / Swedish massage
- ★ Lymphatic Drainage
- ★ Hot Stones Massage

Lynley Ogilvie, RMT.

Call for an appointment: (07) 8668684 or 021 866868

Ten Things That Will Disappear In Our Lifetime!

This list is off an email sent to me and is from the USA, but we will not be far behind.

1. The Post Office

Get ready to imagine a world without the post office. They are so deeply in financial trouble that there is probably no way to sustain it long term. Email, Fed Ex, and UPS have just about wiped out the minimum revenue needed to keep the post office alive. Most of your mail every day is junk mail and bills.

2. The Cheque

Britain is already laying the groundwork to do away with cheques by 2018. It costs the financial system billions of dollars a year to process cheques. Plastic cards and online transactions will lead to the eventual demise of the cheque. This plays right into the death of the post office. If you never paid your bills by mail and never received them by mail, the post office would absolutely go out of business.

3. The Newspaper

The younger generation simply doesn't read the newspaper. They certainly don't subscribe to a daily delivered print edition. That may go the way of the milkman and the laundry man (also dry cleaning delivery). As for reading the paper online, get ready to pay for it. The rise in mobile internet devices and e-readers has caused all the newspaper publishers to form an alliance. They have met with Apple, Amazon, and the major cell phone companies to develop a model for paid subscription services.

4. The Book

You say you will never give up the physical book that you hold in your hand and turn the literal pages. I said the same thing about downloading music from iTunes. I wanted my hard copy CD. But I quickly changed my mind when I discovered that I could get albums for half the price without ever leaving home to get the latest music. The same thing will happen with books. You can browse a bookstore online and even read a preview chapter before you buy. And the price is less than half that of a real book. And think of the convenience! Once you start flicking your fingers on the screen instead of the book, you find that you are lost in the story, can't wait to see what happens next, and you forget that you're holding a gadget instead of a book.

5. The Land Line Telephone

Unless you have a large family and make a lot of local calls, you don't need it anymore. Most people keep it simply because they've always had it. But you are paying double charges for that extra service. All the cell phone companies will let you call customers using the same cell provider for no charge against your minutes.

6. Music

This is one of the saddest parts of the change story. The music industry is dying a slow death. Not just because of illegal downloading. It's the lack of innovative new music being given a chance to get to the people who would like to hear it. Over 40% of the music purchased today is "catalog items", meaning traditional music that the public is familiar with. Older established artists. This is also true on the live concert circuit.

7. Television

Revenues to the networks are down dramatically. Not just because of the economy. People are watching TV and movies streamed from their computers. And they're playing games and doing lots of other things that take up the time that used to be spent watching TV. Prime

time shows have degenerated down to lower than the lowest common denominator. Cable rates are skyrocketing and commercials run about every 4 minutes and 30 seconds. Let the people choose what they want to watch online and through Netflix. (Are theaters next?)

8. The "Things" That You Own

Many of the very possessions that we used to own, we may not actually own in the future. Your computer operating system will be tied straight into the internet. If you click an icon, it will open something in the internet cloud. If you save something, it will be saved to the cloud. And you may pay a monthly subscription fee to the cloud provider. In this virtual world, you can access your music or your books, or your whatever from any laptop or handheld device. That's the good news. But, will you actually own any of this "stuff" or will it all be able to disappear at any moment in a big "poof?" It makes you want to run to the closet and pull out that photo album, grab a book from the shelf, or open up a CD case and pull out the insert.

9. Joined Handwriting (Cursive Writing)

Already gone in some schools who no longer teach "joined handwriting" because nearly everything is done now on computers or keyboards of some type (pun not intended).

10. Privacy

There are cameras on the street, in most of the buildings, on most policemen (and maybe soon everyday civilians will be wearing them) and even built into your computer and cell phone. But you can be sure that 24/7, "they" know who you are and where you are, right down to the GPS coordinates, and the Google Street View. If you buy something, your habit is put into a zillion profiles, and your ads will change to reflect those habits... "they" will try to get you to buy something else. Again and again and again!

A couple more that the writer of this email thinks will disappear on top of this: **clocks**... a lot of kids these days can't read one...unless it is "digital"; **tying** shoe laces. I used to think it was a fashion statement that kids had...but now I'm convinced they just don't know how.

STAR AND GARTER HOTEL

TO OUR VALUED PATRONS

**We cordially advise that the Star and Garter
will be closing from the 20th July and
re-opening 20th August 2015.**

**We apologise for any
inconvenience this may cause.**

**Your Hosts
Brian and Karen**



**Star and Garter Hotel,
5 Kapanga Road, Coromandel
Phone 07 866 8160**



**Coromandel
QUARRY &
Contracting Ltd**

- All grades of metal delivered
- Driveways, roading, earthworks
- Please call for a FREE quote

Telephone 07 866 8306

email: richard@cqc.co.nz www.cqc.co.nz

Rangatahi

CELEBRATING OUR CHILDREN

Kiwi Can

"Kia Ora Tatou Katoa" from the Kiwi Can team.



During this term our students in Kiwi Can have been talking and learning about being responsible. Our tamariki have learnt that it is important to remember that we take responsibility for our actions and don't make excuses or blame others. We have discovered how we show responsibility at home, at school and in our community. Our senior students even came up with a responsibility poem. Students were asked to describe what they thought responsibility smelt like, taste like, looks like, feels like, and sounds like.

Below is an example of the awesome work that was done.

Poem from Room 7 Coromandel Area School:

Responsibility

Sometimes responsibility doesn't taste like anything because we shouldn't always expect a reward.

But should always feel like making a good choice, as we finally have a voice.

Happy voices encouraging each other, smells like fresh sheets, rainbows and lolly pops.

Responsibility looks like helping each other up when they are down, Responsibility all around.

We have also been talking about being Reliable and realising that if we want to be



Some of the Richardson's Real Estate team having fun while doing the obstacles and energizers during their team building/family fun day

trusted and for people to believe us we need to be reliable by telling the truth and doing what we say we are going to do. We have also been realising the consequences of not being reliable, honest and responsible.

At the end of May 2015, the Coromandel Kiwi Can team was asked by Richardsons Real Estate to run a team building/family fun day for all the real estate agents on the Peninsula. This was held in Thames at the Thames Rugby Club. A fun day was had by all and Richardsons Real Estate kindly donated \$600 to the Coromandel Kiwi Can team, which will be used to purchase resources and equipment for the tamariki at our three schools: Coromandel, Colville, and Thames South.

Our Kiwi Can team would like to thank Richardsons Real Estate for giving us this opportunity.

Want to help out Kiwi Can Coromandel?

You are now able to donate to the FYD Kiwi Can Coromandel Programme directly through the FYD website.....go to www.fyd.org.nz/donate, click on Kiwi Can, choose Coromandel as the region and know that your donation no matter how big or small is going to our Coromandel Region for our local tamariki. Your donation no matter how small, will be invaluable in continuing this worthwhile and much-loved programme. We are still seeking interested parties to sponsor FYD Kiwi Can Coromandel.

Sign up to Tiny Mighty Power. Nominate FYD Coromandel and they will donate \$50 to FYD Coromandel Kiwi Can for every new connection and \$12 if the connection continues every year.

Nga mihi nui from Marlene, Jamie, Gemma, Nadia and Natalie.
kiwican@cilt.org.nz

The FYD Coromandel Kiwi Can programme is managed by the Coromandel Independent Living Trust, officially sponsored by SANFORD Ltd & supported by The Lion Foundation, the Grassroots Trust, Sky City Community Trust, New Zealand Community Trust (NZCT), Thames Community Board and Driving Creek Railway Ltd, CCST (Colville Community Services Trust)



Coromandel Area School

Equipped For The Future.

E whai ana mō te wā heke mai nei

By Mary Kedzlie

In the last issue of the Coromandel Town Chronicle, Coromandel Area School commented on its growing roll. In the same issue, a letter to the editor quoted, "And have we noticed the shrinking number of students at our area school?"

With these two conflicting statements in the same issue, I think it is most timely to outline a few statistics about the number of children that have enrolled at Coromandel Area School over the last few years.

During 2013, 25 new students enrolled during the school year. 8 students left the school. The end of year school roll was 158 students.

During 2014, 39 new students enrolled during the school year. 30 students left the school. The end of school roll was 167 students.

COROMANDEL
AREA SCHOOL



To date in 2015, 34 students have enrolled. 8 students have left the school. Our current school roll as at 9 June 2015 is 193 students.

Our expectation is that the school roll will be over 200 students by the end of the school year.

The above statistics do indicate that the school roll is beginning to increase – which is great news for both the school and for the community.

In my short time as Acting Principal of Coromandel Area School, I have been impressed by the commitment, dedication and professionalism of the Board of Trustees and staff. They have a common desire to deliver a robust teaching and learning programme that keeps the child at the heart of the matter.

The school is currently going through a time of change, with the appointment process of a new principal for the school underway. The Board of Trustees is seeking a new principal with the energy, experience and proven leadership to drive the strategic change that will deliver improved curriculum outcomes and motivates, inspires and supports students, staff, whanau and the wider community.

Year 7 and 8 camp

School camps are a great chance for students to learn new skills outside the classroom. Students learn more about their classmates and teachers and life-long memories are made. Later this year, the combined year 7/8 class will be going to Totara Springs in Matamata for three days. The students have planned many outdoor education activities including abseiling, archery and rock-climbing. The camp will cost \$200 per student and we hope you will support their fundraising efforts. The first fundraiser is selling sheep manure for the garden @ \$8 bag (see Classifieds). The students will be digging, bagging and delivering it themselves. Please get behind this great initiative.



GaiaDecorators

PAINTING HOMES
ACROSS THE COROMANDEL

LIMITED

The Professional Finish For Every Building

Painting • Specialist Finishes • Wallcovering • Feature Walls • Maintenance

Mark Gaia 021 295 5532 | 07 866 7485
COROMANDEL | gaiadecorators@gmail.com
www.gaiadecorators.co.nz

Residential
Commercial
Free Quotes



Te Rerenga School

Nurturing a community of life-long learners

By Anna Yates

We have had an action-packed term 2 with school photos, native tree planting, the National Young Leaders day in Auckland, the Zerowaste programme, a visit from Reuben the safety bear, Hahei memorial forest planting, gymsport practice, visits from Briar for project energise etc. One thing we certainly have not been short of is exciting learning opportunities for our enthusiastic students!

We have transplanted our school orchard, moving it to within our immediate school grounds. We can't wait until this area thrives and grows as it will provide a food source for our students as well as a space to just chill out and relax in. We had a Friday afternoon working bee to work on this area as well as prepare our school gardens for their upcoming planting. We got a lot done around our school and it was great to have such a strong turnout of parents to help us on what turned out to be a warm, sunny afternoon.

The working bee was good practice for our Room 4 students who visited Rings Beach the following week to plant native trees. We plant in this area annually and it is a great way for our students to give something back to our local environment that we are so fortunate to have on our doorstep.



Our senior students at Auckland's National Young Leaders day



Reuben the safety bear visiting room 1

Coromandel Youth Group School Holiday Programme

3-19 July

By Nadine Smith

There will be a variety of activities to choose from each day with lots of different things to make.

The opening times for both weeks of the holidays are:

Monday, Tuesday, Wednesday, Thursday 11am-4pm; Friday night 6-9pm; Sunday 1-4pm.

Coromandel Youth Group is for children over 5 who live in Coromandel and outlying areas. All you need to do is fill in a membership form.

Children can bring a packed lunch or money for a pie or hot chips.

There is an entry fee of \$2.00 for Monday to Thursday sessions.

Copies of the holiday programme or for more information call in at the Youth Rooms, Hauraki House or telephone us on (07) 866 7061.

We now have a solicitor in Coromandel town every Tuesday



BRENDA FLAY, SOLICITOR: Travels to Coromandel on Tuesdays.
Please phone the Thames Office (868 8680) for appointments.

PARTNERS: John Jenkison and Hayley Green

Thames Office: 611 Mackay Street, P.O. Box 31, DX GA25514, Thames

Phone: 868 8680 **Fax:** 868 8718 **Email:** pjo@pjolaw.co.nz

Coromandel Office: Tiki House, Tiki Road

Our services:

PLANNING:

PROPERTY:

COMMERCIAL:

Asset protection, estate planning, family trusts and wills

Negotiation and advice on all matters related to the sale and purchase of land, buildings and rural property refinancing. Separations and relationship property

Company formation, sale and purchases of businesses, leases, dispute resolution, employment and related matters.

THAMES

WHITIANGA

COROMANDEL

Arts

Writers' Group

By Sue Gilmer

Another great meeting starting with a discussion on how to give each other honest, constructive feedback. Commend, recommend, commend was suggested as a useful form, along with asking questions for clarification – skills that definitely cross over into everyday life.

Barbara shared from last month's meeting, an exercise of using antonyms to change old sayings. This is what the group came up with.

Love's young dream.....became.....
loathings elderly hallucinations.

A rolling stone gathers no moss.....
became.....stagnant waters grow algae.

Old soldiers never die.....became.....baby
peacemakers always flourish.

Next we were given the starter of "climbing the hill" for our 15-minute session of spontaneous writing. People's work varied from factual events taken from memory to the creative form of letting the flow take over without a set idea of where it will end up. This stimulated a discussion on how do we access into that form of creativity and imagination. No real answers were given here, although trusting the process may be a part of it.

Following this in our set format comes the sharing of books and poetry. Coincidentally Deborah Challenger, a New Zealand author who writes historical fiction, was being read by both Sue and Barbara – beware – there is a waiting list in the Coromandel library for her books. To wind up the poetry section, A A Milne's Pooh Bear was quoted in chorus with gusto and grins.

After lunch and a scrumptious cake – thank you Megan – we settled back to share our homework. The starter given was "The art of..." One person chose the art of smiling. Others chose the art of proposing, clearing out and from completely left field, the art of the fart. This was read with much hilarity. The piece ended with a quote from Martin Luther.... "I resist the devil and it is often with a fart that I chase him away." I'm not quite sure how to follow a quote like that!

Homework set for the month was either a rewrite of "climbing the hill" or a new starter of "The container".

Another great and stimulating day. Thank you all

We meet the second Thursday of each month. If you would like to join our group please contact Barbara on (07) 866 8299

Coromandel Players News

By Liz Cameron

Listen out for us on the streets during Illume! We will be giving you a "taster" for our "Coromandel Capers" musical revue being held on **10 & 11 July**, 8pm and 2pm respectively.

Do come along and sing with us songs of the 1920s and 30s; song sheets will be provided! Dress in your best "flapper era" finery if you wish! Tickets, which can be purchased at the Coromandel Information Centre, or at the door, are only \$10, including supper or afternoon tea.

Venue – our theatre in Hauraki House.

Also, a hearty thank you to all those involved in our last production, Three Plays, and a big thank you to you, our audience for giving us your continued support!

See you on the streets on **3 and 4 July**, during Illume!

A Winter Sing

The Mercury Bay Community Choir is delighted to be hosting U.S. choral director, Dr James Niblock of Allegheny College, Pennsylvania, for a week of singing workshops which will culminate in A Winter Sing, a formal concert at the Whitianga Town Hall on **Saturday 18 July**. It will feature a massed choir of 50 as well as smaller auditioned ensembles singing a delightful repertoire selected by James. This is the third time many of the participants will have worked with James and there is great anticipation of a stimulating and exacting week with him before the concert.

For the Winter Sing project, the 30 members of the Mercury Bay Community Choir are being joined by singers from Great Barrier Island's Island Song choir, Te Aroha's Aroha Community Choir, Mercury Bay Area School students and other individuals from Auckland, Thames and Colville. Included is Stephanie McKee, well loved in Coromandel for her music and a past member and director of the host choir.

Billed as an event to "warm your body, heart and soul", this is an occasion not to be missed!

Tickets (adults \$15, under 18's free) for the concert can be purchased and booked online.

Details at www.creativemercurybay.co.nz/organisations/mercury-bay-community-choir

Coromandel Music Society

By Maureen Kimber

We have had to reshuffle our programme slightly owing to the cancellation of the concert by the popular country and western star John Grenell and his daughter. We do not have a concert in July but watch out for details in the August Chronicle and come along to support three very talented local musicians in early August.

Concert goers know that over the years we have promoted wonderful artists from New Zealand and overseas through Arts on Tour, some of whom have contacted the Music Society directly, or through personal contacts. We do like to encourage local performers, among whom there are many very talented musicians, so your support both encourages and helps to finance their ambitions for which the Music Society thanks you all.

Some of our small committee are taking winter breaks, and will be back with renewed vigour! Robin Munch our president, Maureen Kimber secretary and Martin Edwards treasurer are leaving the reins in the capable hands of Ian Franklin, Fran Edwards, John Gaffikin-Cowan and Jennie Leigh, so do look out for them if you see them stressed during the winter months! We do have some amazing concerts coming up before the end of the year so we need our full committee on board!

The choice of venue does depend on the type of concert we are promoting, but this does not seem to deter the numbers attending, and indeed we are lucky to have a choice of venues. Again our heartfelt thanks go to the community for the wonderful audience participation shown at all our concerts and the regular Music Society column will recommence next month. See you all in August.

The
Lighthouse
Studio

*Custom Woodworking,
Persian Rugs, Local Art*
75 Wharf Road (next to Coro Pies),
down the Green Lane.

Open 10-4 Tue thru Sat (unless we've "Gone Fishing")

Call: 021-038-0923 for a Rendezvous.

www.lighthouse-studio.co.nz

Art Group

By Lindsay Nicholls

Val Tubman has already been and we had a wonderful day with her. Most of us chose between oils and acrylics.

We focused on seascapes with Val's technique for painting skies. It is a

Miriam Moss working very well at class with Val Tubman
lot looser painting than some of the group are used to so it was great to see them attempt it and come away with a lovely piece. I'm sure some of them will end up in the exhibitions we hold later in the year.

Our next workshop is with our local tutor Vaughn Udall to be held next month. We are working on the subject "outside looking in" so that will bring a great variety of interesting paintings.

We all have a bit of time to get a great photo to work from for this.

We have had several artists leave the club and this has created room for any like-minded people out there who have thought about possibly joining a group or anyone who has recently moved into the area who is a keen artist. We meet every Thursday morning at St Andrews Church Hall in Rings Rd at 9.00 til around noon. We ask for a small daily charge as opposed to a members fee. We find this works well, especially for some of the older members. So if anyone is interested, you may give our president a call or myself or pop in to have a chat one morning. Up until recently, we have had a two-year waiting list, so don't leave it too long to decide, or you may miss out. Arty Cheers.



Coromandel Community Arts Council Hauraki House Gallery

By Chris Stark

Winter is always a quiet time in the gallery, with only casual bookings between now and next summer. It is the time we usually do our housekeeping; cleaning the windows and carpet, repainting and fixing holes in the walls where necessary etc. Fortunately this year the major tidy-up we had last year will stand us in good stead for at least another year so we can take it a bit easy this winter.

After our appeal for new members a while ago, we have had two people come forward prepared to join our committee. We welcome Vi King as our latest member. It is great to see a new face at meetings but we could still do with a few more people. If you are brimming with ideas and not afraid of attending a meeting now and then, please step forward.

People seem to want to stay home when the weather is not the best so unfortunately we have had to cancel our "pop-in, drop-in" day. It is a pity as those of us who went last year really enjoyed the company and the chance to finish off lots of half-done projects. We can always start it up again if the demand increases.

Over the winter we will be running a series of articles featuring local Coromandel artists on our Facebook site. This month we are featuring Raewyn Penrose, felt artist. Raewyn produces absolutely stunning felt artwork and garments. Her studio is on Tiki Rd so pop out and see what she has in stock.

Contact Loes (07) 866 8053 or Sue (07) 866 8039 for gallery bookings or information. Facebook: Hauraki House Gallery

New art group

By Christine Lunn

A small group of artists from the Coromandel Colville area have been meeting recently on an ad hoc basis to discuss their various projects

After talking to various people in the area it has become apparent that there could be a number of artists and people new to art whose interests are not being met at present. The group have decided to invite any interested artists (or budding artists, or first timers) to join them.

Initially the group will continue to meet on an informal basis until the membership expands to a size where it needs a formal set of rules and officers.

Initially the meeting room is in Colville but this may change as numbers or requirements grow.

There will be an opportunity for participants to exhibit there work on a permanent basis in a small gallery.

Initial contact can be made with Christine Lunn on (07) 866 7220 or mobile 021 484 118 or Sue Hughes on (07) 211 9774 or mobile 021 142 1124

Coromandel – Colville Art Group

Are you interested in joining an enthusiastic art group?

We are a small group that has been getting together on a regular basis to discuss art topics and paint. If you are already drawing or painting or if you have thought about trying your hand we will be happy to welcome you.

Our motto is:-Have Some More Fun (thanks Frank)

Call Christine Lunn on
07 866 7220 or 021 484 118

Sue Hughes on
07 211 9774 or 021 142 1124



COROMANDEL HANDYMAN SERVICES LTD

OVER 15 YEARS IN COROMANDEL



Specialising in on-site caravan/awning maintenance

Also:

- Interior/exterior building maintenance/renovations
- Bathroom makeovers
- Shower installation
- Fences and decks etc. built/repared
- Super Gold Card discounts



CALL JOHN OR TINA NOW
PHONE/FAX: **866 8203**
MOBILE: **027 681 5244 OR 021 055 0525**

Environmental

MEG

By Natalie Collicott

Harp fundraiser concert a success

Thanks to everyone who came to the harp benefit concert at Driving Creek Gallery on Saturday 6 June. The evening was a total success with over \$500 being raised for MEG. Award winning harpist Thomas Loeffke played a beautiful set of Keltic and Irish folk songs, complemented by a slideshow of emotive imagery. Patrons were able to partake in wine and delectable hors'oeuvres supplied by our supporters. All in all, a lovely evening! MEG are grateful for the support of Driving Creek, who let us use their wonderful Gallery space as the venue.

Kiwi calls

Our volunteers are in the thick of our 10 year kiwi census. This year we are monitoring 27 sites (with volunteers undertaking three listens at each site) to see if our kiwi population has increased. Sites are situated around Port Charles, Colville, Waikawau Bay, Kennedy Bay, and Coromandel town, with the most southern sites on the 309 Rd. And volunteers have come from all over, with some travelling from



Letticia Williams, Thomas Loeffke and Barry Brickell at the recent harp concert

Hamilton and Auckland to participate! A testament to New Zealanders' love of kiwi. Of course we also have lots of locals taking part. I have been enjoying getting updates from the listeners. Some have already heard kiwi at their sites. Others have not, but this does not seem to dampen their enthusiasm. Our best record this year comes from a site near Colville where 23 calls were heard in 125 minutes! This is a known kiwi hotspot, but I am hopeful that as our kiwi population continues to grow, reports like this will become more commonplace.

Launch of Kiwi Code Red

Thursday 4 June was the launch of Kiwi Code Red, a new craft beer which will help raise funds for kiwi on the Coromandel. Moehau Environment Group has teamed up with Karen and Neil Vowles from the Coromandel Brewing Company to make a red Irish ale. Proceeds from the sale of Kiwi Code Red will help predator control continue within our kiwi protection areas. The beer's branding will also act as a talking point at the popular brewery, to hopefully spread the message that Coromandel is "Real Kiwi Country".

The launch took place at the Pour House in Hahei, home of the Coromandel Brewing Co. It was a full house, and the beer was a hit with the locals and those that had travelled from as far as Port Charles and Thames to sample a drop. If you'd like to taste for yourself, it's available on tap at the Pour House in Hahei, and will be bottled in the next few months.

Moehau Environment Group is a non-profit volunteer organisation dedicated to the protection and enhancement of the natural environment of the northern Coromandel. For more info or to get involved please get in touch with Natalie Collicott, MEG Coordinator: (07) 866 5337; Email: natalie@meg.org.nz or go to www.meg.org.nz

Bush Bites

You've all heard of "sound bites"; now our MEG trappers want to share some "bush bites" – inspiring encounters they've had with nature while out in the bush.

"I've seen and heard North Island Robins today and yesterday, so I'm feeling pretty happy. Oh, and kiwi calls last night."

"During the afternoon I saw a flutter out of the corner of my eye, which turned out to be a morepork sitting on a dead punga frond. While watching, the bird swooped in on a silvereye, which just managed to escape its talons."

"Today I've heard and seen so many bellbirds and three kiwi poos."

"I was captivated by the way the wind was ruffling a sunlit rata today. Magical!"

Coromandel Trapping Dept

By Carol Sutherland

Species: *Felis catus*

Circumstance: Feral

Distinguishing features: 8 weeks (?) old ginger tabby

Found roaming at night foraging scraps and native invertebrate fauna. Was a skinny, hissing and spitting fur ball, but a quick learner.

Within a week of internment: Uses dirt tray. Stays around human and house. Very social with people. Likes being handled, patted and tummy rubbed. Very smoochy. Desires care and attention. Chases floor mops.

Bail terms:

Released to good home, responsible persons. Will be neutered with shots. It wasn't his fault that his mother was dumped. However, he cannot remain in the bush.

Any interested adoptive individuals or families

please contact
Carol Sutherland
- 0274 864
043 or Raine
Williams - (07)
866 7918 or
gryphon@j40.org



Cape Colville Multi Species Trap Fence Buffer Zone

By Kelvin Moutisen

Kia ora, we are pleased to announce that Waiaro Sanctuary has teamed up with Colville Social Services Collective to help prevent reinfestation of predators onto Moehau. It is early days yet. This project has many benefits as well as uniting the community to take care of its own and will involve locals who actually care about the land where they live and not rely on government departments and their workers who come and go (with no accountability) and don't care the same as those who permanently live and stay here.

Waiaro Sanctuary is keen as the area has heavily reinfested between the MEG poison area and the sanctuary as well as an increase in cats near the turnoff where the pateke are. This is frustrating as we had it under 5% by trapping and using some cyanide a few years ago. DOC even monitored it. I got the results after two years of hassling. It is plain to see from comments I read that some people have no idea at all what a buffer is. This project will remove the need for ongoing toxins and provide a safe corridor for our flora and fauna. Bruce Thomas of Breaksea Island fame and Kamate traps has thrown his considerable expertise behind the project, Waikato Regional Council has contributed with over 100 opossum traps and 400 Kamate rat traps have been donated. The benefits are too numerous to mention here but I will keep you informed. Opossums, cats, stoats and rats as well as magpies will be targeted without the deadly poisons DOC and the majority of their funded groups use. This project has huge potential and massive support.

Anyone who is interested in this project register your interest with Colville Social Services Collective or myself. Ideally being paid would be good and we are working on this as well.

Noho ora mai na Kelvin.

Our Coromandel

News from Thames-Coromandel District Council



JULY, 2015

Your rates for the coming year

Over the next ten years, \$580M is to be spent on core infrastructure and our rates increases will be an average 2.08% per year.



We're looking at an average 2.88% rate rise in 2015/16 alongside a draw on our wastewater reserves.

That's because in the 2015/16 year, we are addressing a major cost impact. The three eastern seaboard wastewater plants, completed in 2009, cost approximately \$93M.

In the planning phase, before the global financial crisis, it was assumed that 66% would eventually be paid by development contributions via future growth. With the recession this assumption was dashed and in 2015 some \$46.6M of unpaid debt will need to transfer to wastewater ratepayers as future growth will not be enough to repay all of this debt within the 50 year life of the plants. In fact, 1.8% of this average 2.88% rates rise in the first year is attributed to that unpaid debt.

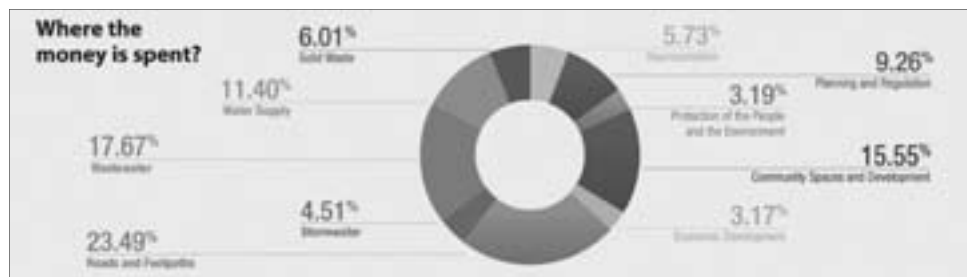
Over the next ten years, \$580M is to be spent on core infrastructure and our rates increases will be an average 2.08% per year. If the situation changes favourably in the future, we will review this.

(Note: figures are still awaiting final sign off from Audit NZ and Council and so final figures could still change. Council will sign off the final version at its meeting on Wednesday 24 June.)

Numbers in brief

The indicative average rate rise is 2.88% in 2015/16 and then lowers to 1.03% in 2018/19, while our external debt is reducing to a level of some \$4.5M.

Where is the money spent?



DISTRICT LIBRARIES SNAKES AND LADDERS WINTER READING PROGRAMME

Snakes and Ladders, the retro board game of the past, has been steam-punked to create the coolest winter reading programme this century. The more you read, the further you get in the game.

See www.tcdc.govt.nz/libraries for more information.

Fan worm (Sabella) finds in Coromandel Harbour

Boaties and marine farmers around the Coromandel are being urged to take extra care after recent new finds of the marine pest fan worm (Sabella) in Coromandel Harbour.

If you think you have seen this pest report it to MPI's pest and diseases hotline 0800 809966 or call the council on 0800 800 401.

www.biosecurity.govt.nz/pests/mediterranean-fanworm

Arts Strategy

A recent decision by Council to contribute \$12,000 towards the development of an Arts Strategy is the first step in formalising a relationship between our Council and the Coromandel's arts community.

Matarangi-based arts consultant Hilary Falconer has been contracted to research and draw up a draft strategy. Ms Falconer was previously the CEO of regional arts development trust Arts Waikato and had been involved in supporting many arts groups around the Coromandel. She will now be meeting with arts organisations, groups and representatives from across the District to help formulate the strategy.

www.tcdc.govt.nz/arts-strategy



Motor Vehicle Licensing coming here soon

WATCH THIS SPACE...

From 1 July, the Coromandel's AA Service Centre will be based at our Council's district office at 515 Mackay Street, Thames.



Coromandel
-Colville
Community
Board
UPDATE

- **Community Grants**
Applications for the Community Grants are now open. Local organisations and locally run community events are welcome to apply. Application forms and supporting documents can be downloaded from our website www.tcdc.govt.nz/communitygrants or by calling in to your local TCDC office.
- **Community Board Meeting**
If you would like to know what is going on in Coromandel-Colville come along to our next Community Board Meeting 9 am on 11 August 2015 at the TCDC Coromandel Service Centre.



Get our free eNewsletters!
www.tcdc.govt.nz/subscribe



www.facebook.com/ThamesCoromandelDistrictCouncil

www.coromandel.govt.nz

customer.services@tcdc.govt.nz
Private Bag, 515 Mackay St, Thames
Phone: 07 868 0200

Environmental continued

Coromandel Kiwi Project

By Jeff Williams

The Coromandel Kiwi Project maintains a network of stoat and rat traps in the hills above Coromandel town. At present these traps extend from Flays Road in the north to Whangapoua Road in the south. Our goal is to extend the scope of the current stoat trap network to the south as far as the 309 and to the north to link up with existing DOC and MEG lines. In doing so, we would be creating a safe corridor for kiwi to move all along the ridge.

This past month the Coromandel Kiwi Project held the first of what we hope will be a successful series of meetings with local landowners. The attendees were enthusiastic in their support of the idea of a kiwi corridor and we'll be working to accomplish this in the future. We have also had additional inquiries about setting up traps on private property and we're working to supply purchased and/or loaned traps in these cases.

Ideally the entire northern peninsula will become a safe habitat for kiwi and other native bird species. Numerous community groups are already working to accomplish this, but we need the support of landowners to help tie all of these efforts together. If you're wondering what a community can accomplish through this kind of work, check out the successes of Backyard Kiwi (www.backyardkiwi.org.nz). At Whangarei Heads, kiwi are living right alongside residents. How amazing would it be to not just hear kiwi above Coromandel town but to also see them in our own backyards?

The Coromandel Kiwi Project is a group of local volunteers giving their time and energy to the community. Please join or support us! Contact coromandelkiwiproject@meg.org.nz.

Peninsula Project

By John Veysey

In 2013 DOC dropped 30 tonnes of 1080 over the top half of our Peninsula. In 2014 DOC dropped 40 tonnes of Pestoff rat poison over Mercury Island. In 2015 DOC will drop 50 tonnes of 1080 over the bottom half of our Peninsula.

When DOC are not dropping 1080 they are pushing a poison called Cholecalciferol. This comes as a toxic bait under the Pestoff label with the trade name DECAL.

DECAL, cholecalciferol, is the most cruel of our present wild animal control poisons. Animals take weeks to die and may wander many kilometers outside the poisoned area to be consumed by domestic animals or wild animals meant for the table. Cholecalciferol can remain toxic in the bait for many years.

Cholecalciferol may also poison pig hunters and their families, many hundreds of Coromandel families are partial to a piece of wild pork from time to time.

So why are DOC using cholecalciferol?

Trapping rats in the wild may well have a benefit to the environment, but not poisoning.

DOC's own science states: "Net outcomes (the balance between so-called 'costs' and 'benefits') must be measured at the community level, because non-target deaths, secondary poisoning, diet switching, and other unexpected responses may counter-intuitively negate the benefits of reducing ship rat numbers." But DOC does not always adhere to its own science. The distribution of Pestoff poisons seems to be DOC's main job. The Pestoff products are all made at the same government factory which produces the 1080, the cholecalciferol and the brodifacoum which are available to the public.

The Pestoff brodifacoum rat poison that we can buy from the store is hugely persistent in the environment. It is accumulative and DOC will not use it in DOC-administered land for fear of poisoning pig hunters and their families. DOC does not want the responsibility. But if private landowners are happy to take on the responsibility that's fine with DOC. After DOC's brodifacoum drop over Mercury Island, the island was littered with dead land birds; poisoned seabirds and even seals washed up on east coast beaches.

It is one thing to buy this Pestoff brodifacoum from the store and put it in your roof to kill rats. If you can tolerate the smell of decaying rat carcasses, that is your business, but when you put this poison out in bait stations it becomes everybody's business. Pestoff rat poison accumulates through the food chain and poisons domestic animals, native birds and insects. These rat poisons are so persistent that it makes little difference whether you place them in bait stations or drop them from the air. Dog owners used to have to protect their animals only after a 1080 drop but today we have so much rat poison being put out in the environment by so-called conservationists with the best of intentions, that poisoned dogs, hawks, moreporks and insects are a common sight in areas where there has been no 1080. Pigs which look perfectly healthy when caught, may well be full of toxin.

It is very sad that our Conservation department, which we should be able to trust, is so bent on spreading poison instead of concentrating on trapping to do a more efficient job that is completely safe to the rest of our wildlife. If all we had was traps, non-target animals would no longer be at risk and there would be no division "at the community level".

FYI

John Innes's *Handbook of NZ Mammals* clarifies the consequences of poisoning rats: "Net outcomes (the balance between so-called 'costs' and 'benefits') must be measured at the community level, because non-target deaths, secondary poisoning, diet switching, and other unexpected responses may counter-intuitively negate the benefits of reducing ship rat numbers."

COROMANDEL REFRIGERATION & HEAT

in association with Browns 100% of Thames

**Need whiteware?
Don't leave town!**

**Good prices: Fridges, Freezers, Washing
Machines, Dryers, Dishwashers, Stoves**



Simpson / Electrolux

Heat Pumps

Warm in winter, cool in summer



NEW ZEALAND'S FAVOURITE AIR



**We have mobile chillers for hire
and party ice available**

Get a quote from Milton
435 Kapanga Rd Coromandel
Ph/Fax 8668463
email cororefridge@xtra.co.nz

Sport

Fishing in Coromandel Mussel Farms

By Gilbert James, Chair, CoroMFA



Hallo everyone. Recently we wrote an article for a recreational fishing magazine, promoting best practice. It is something we really want and indeed need at all times. Our article is as follows:

Coromandel mussel farming produces ~ 30,000 tonnes annually of top quality Greenshell Mussels from the waters to the west of Coromandel Peninsula and north to Great Barrier. It supports many jobs especially in Coromandel including from charter fishing within the farms. Further growth will be achievable in the coming decades. Some ~ 60,000 tonnes/year of mussels are produced from other NZ locations including far north, top of the South, Banks Peninsula and Stewart Island.

Understandably many recreational and charter fishing skippers take advantage of the good fishing in mussel farms, especially in Coromandel, but there can be serious problems from careless or even just casual operations. The purpose of this article is to advise about good practices and to request everyone's support.

Firstly the serious problems if fishing skippers don't operate properly include:

- Fishing vessels being sunk or overturned (it has happened) and fishers could get seriously hurt, by getting too close to the busy harvest vessel.
- Danger to crews on vessels from flying hooks and sinkers, where fishers are casting lines. This is a real threat to crew safety and their peace of mind, being in fear of poorly casted sinkers and hooks that regularly fly through the air when vessels are close.
- Damage to or even breakage of the surface longline (the likely record for that was a farm that had 16 lines cut in one year). Please remember that these lines are simple polypropylene and are under very high tension and so are very vulnerable to being cut and/or damaged.
- Fishing boat anchors caught on the mussel farm mooring warp-line between the end (orange) surface float and the farm's seabed anchor. (A likely record for that was eight fishing boat anchors caught on one mooring warp-line.)
- Please, no dredging anywhere within farms (it has happened, and didn't end well).

Good fishing techniques we recommend within the farm are:

- Heavier than usual gear (lines and traces) as fish tend to be bigger but there is little room to play them. It's no fun having the biggies bust off.
- Heavier than usual (eg, 2 to 4oz.) sinkers, and on the bottom of the rig, will be as good as any set-up.
- Rigs with 1 or 2 (sharp) hooks.
- Have a spare trace or two made up and handy for times when action is busy and you haven't time for untangling.
- Regular bait checking and changing and no unsecured rods.

All the vessels have signage to "keep clear" and it's not there for decoration. For safety's sake, we have had to change our message for vessels fishing in mussel farms to now require that they do not operate on the same long-line as the one that the mussel farm vessel is working on. This is to avoid our crews, and yours, being exposed to excessive risks.

So the important practices within farms that we request at all times are:

- Please, keep clear means keep clear! Thank you.
- Safety always.
- Respect for each other's business and livelihood.
- All sewage must be discharged more than 500m from a marine farm, and from shore.
- No anchoring inside the farm and only either tie-on to a long-line buoy or use approved mooring hooks to secure to mussel long-lines
- Minimise vessel speed and minimise wake when operating adjacent to other vessels at a marine farm.
- Boat to boat, please call up on Channel 17 but please do not use this channel to chat on.

On behalf of all our marine farmers, best wishes to all.



June - September WINTER WARMERS

HAPPY HOUR
MON-FRI 3-7PM

WHAT'S ON!!!

Wednesday

5-9pm

\$10 Fish n Chips – normally \$17

Thursday

4-6pm

Chase the Ace – be in to Win \$250,
a prize under every card

5-9pm

\$15 Ribs, chips & salad – normally \$19

Friday

12-3pm

\$10 Lunches (9 options off our main menu)

5-9pm

\$16 Steak, salad and fries with Garlic
butter or Mushroom sauce – normally \$25

Saturday

12-3pm

\$10 Lunches (9 options off our main menu)

5-9pm

\$10 Burger with fries, choose from Beef,
Chicken or Fish – normally \$16

ACCOMMODATION

Single \$50

Double \$65

Tidy rooms, shared facilities

146 Wharf Road, Ph 866 8623
Like us on Facebook
search "Admirals Arms Hotel"



Sport continued

Coromandel Yoga Update

As we move into the cooler months of the year it can be hard to drag yourself away from the fire and onto your yoga mat. However, yoga offers us so many wonderful benefits during winter that we must do our best to keep coming along to class and getting onto that mat! The holistic way in which yoga works means that, alongside the physical benefits (increased strength, flexibility, muscle tone and coordination), yoga also helps to increase our vitality and sense of well-being while bringing about a feeling of inner calm. Yoga is an excellent way to get the body moving, blood flowing and muscles warmed up but it also stimulates the immune system, helping us to build resilience and stay healthy and strong.

In Coromandel we are fortunate to have two highly trained and passionate yoga teachers offering a variety of classes.

Jessica teaches an open level class on Wednesdays from 7-8:30pm at the Events Centre building (above the swimming pool behind the information centre). Classes are \$8 and equipment is supplied. Jessica is also starting monthly Nourishing Restorative Yoga Classes at Mana Retreat Centre. The first class was in June. Next dates are **23 July, 20 August, 24 September** and **22 October**, 7.15-9pm and costs \$15 waged/\$12 unwaged. Treat yourself! Come and enjoy a full 1¼ hours of restful Restorative Yoga in front of a roaring fire while listening to beautiful music. This style of yoga is proving to be a tonic for the many side effects of our busy, overstimulated, "plugged in" lives. Gentle stretching and movement are deeply nourishing and calming to the mind and body and take us into a profound state of relaxation and rejuvenation. Suitable for anyone wishing to practice yoga in a harmonious and healthful way including those working with injury or illness.

Don't miss out on this truly nourishing experience!

Another date to mark on your calendar is **7-9 August**. Jessica and fellow Yogini and friend, Clare Etherton are hosting a midwinter yoga retreat at Mana Retreat Centre. The theme for this retreat is "Unplug to Recharge" and will include a weekend of restorative and active yoga, gentle movement and meditation. Come for a relaxing and beautiful weekend to nourish the body, mind and spirit. The weekend costs \$350.00 incl. yoga, accommodation and meals. Bookings: clare@pranayoga.co.nz.

Our other local yoga teacher, Becks, teaches a Beginners Yoga Class at the Coro Gym on Tuesdays 5.20-6.40pm and a special kaumatua class with the Moehau Kaumatua Ropu, every second Wednesday at the Anglican Church Hall from 11.30am-12pm. For more info about the Kaumatua group, contact Coordinator Di Halliday or CILT on (07) 866 8358.

Becks will not be teaching in July and August while she is away on a winter honeymoon in Bali, exploring new styles and depths of yoga to bring back to Coromandel. Her classes will restart with spring on **Tuesday 1 September**. Also in September Becks is hosting a special night of satsang (discourse), kirtan (chanting) and meditation with Swami Muktidharma in Coromandel town. Check out the August Chronicle for more detail.

See you on the mat!

Coromandel Golf Club

By Peter Gray



The Final of the Beaver Cup was held on 6 June. The Handicap Match play format had President Ed Buckett and Patron Ron Evans contesting the final. The match was all square after 18 holes, however, Mr. Buckett claimed victory on the first play-off hole to take out the Cup. Ed went one better than last year when he was defeated by Bruce Fitzpatrick in the final.

The President's Cup was contested in "Wellington" conditions on Saturday 13 June. The "gale" force conditions made scoring difficult, however, Alan Rose took out the prize with 36 points. At one stage the President, Ed Buckett was clubhouse leader and was worried about collecting his own prize; however, he had to settle for runner-up.

Saturday 30 May had the lady members organise the Coromandel Mixed Open, Mixed Pairs Best Ball Stableford Competition. Unfortunately numbers were down from the inaugural year in 2014. Jim Davis and Calvin Gibson took out the honours from the mixed pairings of Ed Buckett and Eugene Weimer, and Bruce Fitzpatrick and Joan Evans. This event has the potential to become a popular event on the club calendar. Many thanks to the lady members for their efforts in organizing the event, prizes and catering.

The Neilson Cup – Best 2 of 3 Rounds Stableford will be contested June/July with the first round Saturday 27 June.

Reminder

Saturday 4 July – Neilson Cup Rd2.

Tuesday 14 July – Ladies' Young Cup

Saturday 18 July – Neilson Cup Rd3

Coromandel Gymnastics Club

By Teresa Brownbridge



Our first 8 week gymnastics term is over and the coaching team has been much more focused in providing a quality product that stimulates challenges and extends all participants. We, of course, also hope that it has been fun, exciting and motivating for all of our gymnasts at whatever level they may be.

Coaches are continuing their professional development over the holidays with three of us going to a "yoga stories for kids" in Auckland which includes how to make yoga fun, relevant and engaging, warm-ups and essential poses, simple partner and group poses with child friendly techniques to both energize and calm.

This will enable us to bring more fun and imagination into the classes, especially our 4- to 6-year-olds session, where creative and imaginative play is a really important part of their development.

For those that may wonder the relevance to pure gymnastics, I would like to add that although we will always have those skills at the front of our minds and the seniors move on to the more technical aspects of the sport we also aim to have the widest participation that we can by all sorts of body shapes and skill levels. Our aim is to encourage involvement.

By the time you read this the Thames Gymnastics Club will have just hosted the Primary Schools Gymsports Festival on **30 June**. We wish all competitors the very best of luck and hope that they had a fabulous day interacting with the many other schools in this region that participate.

Next term (Term 3) we will be starting in week 1 of the new term **Tuesday 21 July**. Please, if you have not paid your fees or filled out your membership forms, these need to be done urgently. Fees for term 3 will be due on the second week of the term.

See you all then.

Coromandel Croquet Club

By Judy Bronlund

Croquet is played on Tuesday and Saturday mornings and on a Thursday afternoon. With winter here we are having to rug up, but as long as it is fine we are out there playing. Our lawns are beside the bowling green in Woollams Avenue, visitors and new members are most welcome to join us.

Contact Kaye (07) 866 8968 or Judy (07) 866 8637

Coro Gym

By Peg McLean

Hi everyone.

It has been a while since our last newsletter but I think we have our gym program all set now. It has been running smoothly for a couple of months and I cannot see any changes in the near future.

We have Christajo taking kickfit, Becks taking yoga, Betty taking pump, Natalie taking Crazy Horse Productions, Catherine taking bootcamp, Peg taking step aerobics and sit and be fit and Judy is part of the easy fitness and fun group, and is also promoting a weight loss programme

Anyone can come along and try any of these groups. All are fun and you get to socialise with like-minded people and lift your fitness levels at the same time.

Illume will be in full swing on **3 and 4 July**.

Coro Gym will be taking part in the festivities on the 3rd and 4th at 5.30pm with "Frozen Zone" in our Kids Zone with games for little ones and bigger ones. Little Crazy Horse Productions are putting on "Melted". We have a meet and greet with special guests – Elsa, Anna and Olaf. Our own special band, G.N.T., will help with entertainment. We have a Snow-ball Mayhem area for bigger kids and so much more. Lights, lights and more fairy lights. Come, join and help us have a wintery blast of fun.

On **Friday 3rd** at 5.30pm, we are having a Coro Gym Inaugural Illume Sleigh Relay. Start at Woollams Avenue, turnaround Assay House. This will be a total blast with eight teams only. Six in a team. Each team member must have a turn to pull and ride in the sleigh provided. Safety gear must be worn and a novelty puzzle must be completed to finish. For all information concerning entry form and safety rules contact Peg; phone (07) 866 8635 or email maxnpeg@xtra.co.nz.

On **Monday 6th and Thursday 9th** at 5.30pm we have Christajo with Illuminated kickfit. Wear White and Shine Bright. This is an open aged workout. Work to your own level of fitness, bring a towel, water bottle and \$5.

We are looking for anyone interested in taking a step-aerobics class at 8am Monday, Wednesday and Friday and someone who would be interested at running a Ballet Class for girls aged around 6yrs. Contact Peg at the above email or phone number.

See you at Illume.

Fishing Club

By Lindsay Nicholls

Just a quick reminder our AGM is on **12 July** at 1.30pm at Admirals Arms. It is getting harder and harder to have enough numbers to form a Committee so please think about helping out. Some of our members have been on for years and would like a break. It may save the club at the end of the day.

Fish of the month for May was snapper. Max Larsen weighed one in at 3.015kg. Dollars coming your way Max! Fish of the month for the rest of June is John Dory and July is cod. We wish to thank any outgoing committee members for their efforts the last season. Each member contributes what they can and it all adds up. Thanks to our raffle sellers each week also. These raffles drip feed the funds even in our winter months when we don't hold our comps. Our next Comp will be Labour Weekend. Remember... AGM **12 July**.



866 8635

See meeting list for class times

K2 Cycle Event 31 October

By Keith Stephenson



This year the K2 will start and finish in Thames, which means the 150K will start from Tairua, the K1 from Whitianga and the 50K starts in Coromandel. This is a wonderful opportunity for any of you that would like to take up the challenge and ride the Nicholas Browne 50K. Maybe the thought of riding your bike to Thames seems at this stage to be out of reach. Over the next four months we have a couple of cyclists who are keen to help you achieve this very popular event. You will be shown the "do's and don'ts" of road cycling. Initially we will stay on the flats and master the art of gear changing, then the skill sets required for going up and down hills, as well as riding with others and having the benefit of drafting. We will also spend time on pacing ourselves and building endurance. Mark Attwood will join us and share his experience at this stage. Mark completed the K4 (which is twice round the K2 circuit – nonstop phew!) in 2010. Mark will share with you what is needed to achieve your goal of riding 54k down the coast to Thames.

We will have our first cycle instruction on **Thursday 9 July**, 5pm at the swimming pool. You must be 16 years of age on race day to ride as an individual. You can be 14 or 15 years of age, however an adult must ride with you, and stay with you all the way. The journey will be awesome.

Contact Keith in the evenings on (07) 866 8613 for further information

Good fishing on Mussel Farms

The Industry requests that all boaties taking advantage of better fishing inside Coromandel Mussel farms, please:

- Tie up to the farm and never anchor
- Do not run over any farm structures or ropes
- Do not tie up to and move off any line being worked by a farm vessel
- Always discharge any sewage more than 500m away from the farm



Classifieds

Cost 30 cents per word – please drop the ad and payment (cash or cheque) into Richardsons Real Estate, Coromandel or you can email your words to corochronicle@gmail.com and I will give you my bank details to direct credit.

PROFESSIONALS

ABBY'S HEALING HAVEN. Therapeutic massage and organic skincare at the Lions Den Hostel www.lionsdenhostel.co.nz (07) 866 8157 Abby 021 352 486.

ARE YOU THINKING of having those needed jobs done? Whether it be Carpentry, Decorating, Tiling, I can give you advice and a free quote. Call Vaughan on (07) 866 7969.

BEGINNERS YOGA WITH BECKS RESTARTS 1 SEPTEMBER. Becks is away in July and August on a winter honeymoon. Classes will restart on Tuesday 1 September at the Coro Gym from 5.20pm to 6.40pm. Check out the August and September Chronicles for more details.

BROKEN GLASS? Call Mike Coromandel Glass (07) 866 8869.

CARPENTRY: Windows, Doors, Decks, Kitchens. Sound Tradesman. Free Quotes. Vaughan Udall (07) 866 7969.

CLASSICAL HOMEOPATH Nicole McCauley. For appointments call 021 172 7583

CLEAN UP - CLEAR OUT, Give GO GIRLS a shout! Cleaning, gardening, lawns & weed eating, give our skills a test let GO GIRLS do the rest. Phone Lizzie (07) 866 8810/021 148 5261.

COMPUTER SOLUTIONS. Microsoft Certified Systems Engineer with over 15 years of IT experience providing solutions and support service for PCs, Laptops, Printers, Wired and Wireless Networks, Virus and Spyware removal, Data Protection and Recovery. Up gradations, Consulting, Design and Training. Contact: Dheeraj Bali Ph (07) 866 7550 Mob 021 207 1341 E-mail: dbali@vodafone.co.nz

COROMANDEL CATTERY (07) 866 8117.

ELECTRICIAN, REGISTERED, Steve Garmey, 17 Puriri Place, Tuatewa, (07) 866 7669, 021 0244 0002.

FENCES, DECKS, RETAINING WALLS, dingo digger services Mark 027 433 6260.

"FOR TREES" PETER NOVIS, climbing specialist, felling, topping, pruning and chipping. Fully insured. Phone (07) 866 7764, 027 636 3253.

HOME AND BUILDING

MAINTENANCE. Qualified Joiner. Contact Tony Burton 021 337 484.

KUNG FU WITH KELV. Beginners classes Wednesdays 5.30-6.30pm. \$7. 57 Whangapoua Road. Enquiries 027 283 0773. Genuine old fashioned hard core kung fu as described by Sigung Chu Shong Tin – a disciple of Grandmaster Yip Man. Wing Chun Kung Fu – Relax the body – exercise the mind.

LOG SPLITTING. 10-15 cubic metres an hour. Minimum 4 hours. Phone or txt Paul 027 967 1401.

MEDICINE WOMAN Plant Spells available at Abby's Healing Haven 021 352 486, (07) 866 8157. Formulations for personal transformation by medicine woman Franchelle Ofsoke-Wyber, a genuine matakite.

MUSIC RECORDING. Record your original music. Professionally mixed and mastered. corosoniclab.co.nz. Matt Sephton 021 043 8689

NEED A WEBSITE but worry about all the cowboys out there? AA Traveller is a reputable NZ company and can provide mobile optimised websites from just \$600.00. We build websites for any business, big or small. To discuss, contact Justin @ AA and arrange a personal visit. justin.smith@aa.co.nz 0204 008 2026.

ORGANIC SKIN COMPANY. Calendula cream and face care products for sale at Abby's Healing Haven. Stockist for River Veda organic perfumes, lipsticks, make-up and organic skincare. Organic facials available. 126 Te Tiki St, Coromandel (07) 866 8157.

PAIN RELIEF: Therapeutic Massage Call Peter (07) 866 7077 or 027 263 2521.

PAINTING AND WALLPAPERING: Neat tidy work. Free Quotes. Vaughan Udall (07) 866 7969.

PENINSULA MIDWIVES. Experienced Midwives Available. Fiona Kington 021743717 or 078660413, Jocelyn Yates 0279124104. Free Pregnancy tests.

PIG HUNTERS I can roll your pork. Plain or seasoned \$30. Phone Ernie 021 0261 7945.

PRUNING & GARDEN CARE: help & advice Peter & Gill Bacchus (07) 866 7077.

RANCH SLIDER WONT SLIDE? Call Mike Coromandel Glass (07) 866 8869.

SOIL SOLUTIONS: Need help with soil testing and interpretation? Call Peter (07) 866 7077 or 027 263 2521.

THE LIGHTHOUSE STUDIO: Joinery/custom woodworking, furniture, Persian rugs and LOCAL ART. Between Coro Pies and Morrissey Automotive, down the green lane. 75 Wharf Rd 021 038 0923.

TILING: Wall and floor tile laying service. High standard of work. Free quotes. Vaughan Udall (07) 866 7969.

TREESHAPES. Qualified Arborists for all treework, chipping, stumpgrinding, hedges, section clearance, free quotes. Phone 0274 726 627.

VINYL RECORDS TO CD. Transfer your old records and tapes to CD. corosoniclab.co.nz Matt Sephton 021 0438689

WINDOW CATCH BROKEN? Call Mike Coromandel Glass (07) 866 8869.

WINTER IS HERE: Jobs to be done! Phone Vaughan Udall for a free quote (07) 866 7969.

YOGA WITH JESSICA - Wednesdays 7-8:30pm at the Events Centre (above the swimming pool, behind the Information Centre). All welcome, equipment provided, \$8 per class. Ph: (07) 866 8405 or 021 884 518 for more info.

FOR HIRE

SOUND SYSTEM FOR HIRE, loud and clear sound. Matt Sephton 021 043 8689.

FOR SALE

BUSINESS FOR SALE. Key cutting business for sale. Includes machine and keys. Training available. P.O.A Genuine enquiries to Mob 027 772 236.

COROMANDEL FIREWOOD SUPPLIES quality wood at affordable prices t-tree and pine free local delivery phone or txt ezra on 022 0860 927.

DINING CHAIRS X 6 Leather/chrome \$100, Filing Cabinet single drawer \$50, Unicycle \$80 Phone/text 021 0229 3186.

FIREWOOD T/TREE, Pine, Gum \$100 hotmix nice and dry. Txt or phone Paul 027 967 1401.

NOW SELLING NATURAL interior and exterior oil for wood. Made in NZ by the Naturalhouse Company. Excellent product, easy to use. Available from The Lighthouse Studio, 75 Wharf Rd ph 021 038 0923.

SHEEP MANURE \$8 bag, delivered Coro town. Food for your garden. Fundraiser for CAS Yr7/8 camp. Ph (07) 866 8081.

WANTED

WANTED ALL LIVESTOCK. We inspect in the paddock. Also we transport every Thursday to Waikato's largest saleyards in Morrinsville. Phone Dave Coatsworth 0274 817 100.

WORKING COUPLE looking to move back to the Coromandel township about March/April 2016. We are looking for fulltime work if possible, anything considered. Deb has come from a busy transport office and Adrian a builder/handyman but at the moment working as a Pest Control Technician. We are also looking for long-term accommodation, clean and tidy tenants, no animals. Please contact Deb on 027 733 9303 anytime.

WORK WANTED

ANYTHING CONSIDERED, Ph Jo Notman (07) 866 8074.

TREE SERVICE. Dismantling or pruning. Free quotes. Call Jeremy Haszard (07) 866 0118.

TREESHAPES. Qualified Arborists for all treework, chipping, stumpgrinding, hedges, section clearance, free quotes. Phone 0274 726 627.

PUBLIC NOTICE

COROMANDEL RECREATIONAL FISHING CLUB AGM 12 July 1.30pm at Admirals Arms. All welcome.

Coromandel Town weekly and monthly meetings

Every Monday

Coro Gym – Step/aerobics, 155 Pottery Lane, contact Peg (07) 866 86358am
 Mahamudra Centre, guided meditation in gompaa..... 8.30-9am
 Rudolf Steiner Kindergarten, Rings Rd, contact Kelly (07) 866 7794 8.30am-2m
 Coromandel Hikers Group, Hauraki House, contact Colin & Elspeth (07) 866 71379am
 Colville Social Services Collective, Colville Hall, contact (07) 866 6920 9am-3pm
 Kohanga Reo o Kapanga, contact (07) 866 8417 9am-3pm
 Rudolf Steiner Playgroup, Rings Road, contact Kelly (07) 866 7794 9.30am-12.30pm
 Coro Gym – Sit and be fit, 155 Pottery Lane, contact Peg (07) 866 8635 9.30am
 Coro Gym – Fitness and Fun, 155 Pottery Lane, contact Judy (07) 866 8637 10.30am
 Aerobics low-high xtrng KiwiCan rooms, contact Evy (07) 866 8242 5.15-6.15pm
 Coro Gym – Kick fit with Christajo, 155 Pottery Lane, contact 021 033 9329 5.30-6.30pm
 Shrinking Violets, contact Betsie (07) 866 7076 5.30pm
 Coro Contract Bridge, Coro Ambulance rooms, contact Lyn (07) 866 8858 7pm
 Four-part harmony singing, contact Sue (07) 866 8833 7.30pm

Every Tuesday

Homeschoolers gathering, contact Julene (07) 866 8005
 Mahamudra Centre, guided meditation in gompaa..... 8.30-9am
 Rudolf Steiner Kindergarten, Rings Rd, contact Kelly (07) 866 7794 8.30am-1.30pm
 Colville Bay Early Learning Centre, rear Colville School, contact Alex (07) 866 83199am-3pm
 Coro Walking Group, Hauraki House car park contact Ruth (07) 866 72469am
 Swissball Training – Hi-Tech Health & Fitness, contact Marlene (07) 866 8019..... 9am
 Colville Social Services Collective, Colville Hall, contact (07) 866 6920 9am-3pm
 Kohanga Reo o Kapanga, contact (07) 866 8417 9am-3pm
 Music and Dance, Elim Church- Preschoolers Dance Group, contact Dawn (07) 866 8150..... 9.30-11am
 Coro Ladies Golf, Hauraki Rd, contact Peter (07) 866 7633 tee off 10am
 Yoga, Colville Hall, contact (07) 866 6612 10am
 Croquet, Woollams Ave, contact Judy (07) 866 8637 9.45am
 Coromandel Playcentre, Woollams Ave 10.30am-1pm
 Narcotics Anonymous meeting, Havalona Centre, contact 021 314 467 12 noon
 500 card session at the Bowling Club, contact (07) 866 8886 1pm
 Coro Gym – Fitness and Fun, 155 Pottery Lane, contact Judy (07) 866 8637 1pm
 Coro Cub Scouts, Scout Hall, Hauraki House, contact Abby Morgan 07 211 9790 .. 4-6pm
 Aerobics non-impact cross training & stretching KiwiCan rooms, contact Evy (07) 866 8242 5.15-6.15pm
 Coromandel Ambulance training, Ambulance Station, contact Felix (07) 866 8279 7-9pm
 Coro Motorcycle Club, Star & Garter, contact John (07) 866 6776 7-9pm
 Swissball Training – Hi-Tech Health & Fitness, contact Marlene (07) 866 8019..... 7pm
 Badminton, school gymnasium, racquets available, contact Josh 021 0839 7825 or Nadine 022 174 55 24 7pm

Every Wednesday

Dharma Gaia, Meditation, contact (07) 866 7995 6-7am
 Dharma Gaia, Sitting & Walking Meditation, contact (07) 866 7995 7.30-9pm
 Coro Gym – Step/aerobics, 155 Pottery Lane, contact Peg (07) 866 8635 8am
 Mahamudra Centre, guided meditation in gompaa..... 8.30-9am
 Rudolf Steiner Kindergarten, Rings Rd, contact Kelly (07) 866 7794 8.30am-2pm
 Rudolf Steiner Nursery (<3's), Rings Rd, contact Kelly (07) 866 7794... 8.30am-2pm
 Colville Bay Early Learning Centre, rear Colville School, contact Linda or Alex (07) 866 8319 9am-3pm
 Colville Social Services Collective, Colville Hall, contact (07) 866 6920 9am-3pm
 Kohanga Reo o Kapanga, contact (07) 866 8417 9am-3pm
 Coro Gym – Sit and be fit, 155 Pottery Lane, contact Peg (07) 866 8635 9.30am
 Coro Gym – Fitness and Fun. 155 Pottery Lane, contact Judy (07) 866 8637 10.30am
 Coromandel Golf Club – mens, Hauraki Rd, contact Peter (07) 866 7633. tee off 12.30pm
 Scramble Club, contact Joan for venue on (07) 866 7580 1pm
 Coro Tennis Club – club night, Tiki Rd, contact Gayle (07) 866 8063 4pm
 Wing Chun Kung Fu- Hong Kong Style, contact Chi Sau Club 027 283 0773.. 4.30-8.30pm
 Aerobics – hi/low, KiwiCan rooms CAS, contact Evy (07) 866 8242..... 5.15-6.15pm
 Running Group, meet at rugby club grounds.
 Contact Mark 027 338 6697 or (07) 866 7660 5-6.15pm
 Coro Gym – Pump with Betty, 155 Pottery Lane (07) 866 8635 5.30-6.30pm
 Circuit Training – Hi-Tech Health & Fitness, contact Marlene (07) 866 8019 7pm
 Yoga, Events Centre (behind 4 Square) \$8, contact Jessica (07) 866 8405 7-8.30pm
 Discussion night-optional pot luck dinner, Mahamudra Centre, contact (07) 866 6851 dinner 6pm, meeting 7-8.30pm
 Walking & sitting meditation, Dharma Gaia Centre, contact (07) 866 7995 7.30-9pm

Every Thursday

Mahamudra Centre, guided meditation in gompaa..... 8.30-9am
 Rudolf Steiner Kindergarten, Rings Rd, contact Kelly (07) 866 7794 8.30am-2pm
 Rudolf Steiner Nursery (<3's), Rings Rd, contact Kelly (07) 866 7794 8.30am-2pm
 Coro Walking Group, Hauraki House car park contact Ruth (07) 866 7246 9am-12pm
 Coro Art Group, St Andrews Church, contact Val (07) 866 8911 9am-12pm
 Colville Bay Early Learning Centre, rear Colville School, contact Linda or Alex (07) 866 8319 9am-3pm
 Kohanga Reo o Kapanga, contact (07) 866 8417 9am-3pm
 Meditation for Everyone, in Pyramid (behind Driving Creek Cafe) 10-11am
 Tai Ji, Top Floor, Waikato Events Centre, contact Sol (07) 866 8971 10-11am
 Coro Gym – Fitness and Fun. 155 Pottery Lane, contact Judy (07) 866 8637 10.30am
 Coro Gym – Ukulele group practice for beginners, contact Peg (07) 866 8635 from 1pm
 Bowling Club Housie, contact Sharan (07) 866 7760 from 1pm
 Coro Community Garden, Glover St, contact Louis (07) 866 8866 2-4pm
 Service of the Word & Holy communion, St Colmans church, contact Jocelyn (07) 866 7126 5pm
 Last class for 2014 is 11 Dec, restart Feb 2015 5.15pm to 6.30pm
 Aerobics – step only, KiwiCan rooms CAS, contact Evy (07) 866 8242 5.15-6.15pm
 Coro Gym – Kick fit with Christajo, 155 Pottery Lane, contact 021 033 9329 5.30-6.30pm
 Swissball Training – Hi-Tech Health & Fitness, contact Marlene (07) 866 8019 7pm
 Quiz night, at the Bowling Club, contact John (07) 866 8841 7pm

Every Friday

Circuit Training – Hi-Tech Health & Fitness, contact Marlene (07) 866 8019 6am
 Coro Gym – step/aerobics, 155 Pottery Lane, contact Peg (07) 866 8635 8-9am
 Colville Bay Early Learning Centre, 3-4 yr olds, rear Colville School, contact Linda (07) 866 8319 9am-3pm
 Rudolf Steiner Kindergarten, Rings Rd, contact Kelly (07) 866 7794 8.30am-2pm
 Rudolf Steiner Nursery (<3's), Rings Rd, contact Kelly (07) 866 7794 8.30am-2pm
 Mahamudra Centre, guided meditation in gompaa..... 8.30-9am
 Colville Bay Early Learning Centre, rear Colville School, contact Linda or Alex (07) 866 8319 9am-3pm
 Kohanga Reo o Kapanga, contact (07) 866 8417 9am-3pm
 Yoga for everyone, Anglican Church Hall, contact Katie (07) 866 6612 9-10.30am
 Colville Services Collective, Colville Hall, contact (07) 866 6920 9am-3pm
 Coro Gym – Sit and be fit, 155 Pottery Lane, contact Peg (07) 866 8635 9.30-10.30am

Coromandel Playcentre, Woollams Ave 9.45am-12.15pm
 Coro Gym – Fitness and Fun, 155 Pottery Lane, contact Judy 8668637 1pm
 Coro Tennis, Men's night, contact Gayle (07) 866 8063 4pm
 Coro Gym – Crazy Horse Productions, contact Natalie 021 048 9772 4.15pm

Every Saturday

Mahamudra Centre, guided meditation in gompaa..... 8.30-9am
 Coro Tennis Club – juniors, Rings Rd, contact Gayle (07) 866 8063 9am
 Croquet, Woollams Ave, contact Judy (07) 866 8637 9.45am
 Coromandel Golf Club-club play, Hauraki Rd, contact Peter (07) 866 7633tee off 12.30pm
 Coromandel RSA, contact Ian (07) 866 7138 (winter 1st, 3rd & 5th Sat only) 4-10pm
 St Colmans Catholic Church-mass, Rings Rd, contact Frieda (07) 866 7872 5pm
 Prayers for dead and healing, Mahamudra Centre, contact (07) 866 6851 5-6pm

Every Sunday

Mahamudra Centre, guided meditation-in Gompaa, contact (07) 866 6851 10-10.30am
 Aerobics – step combo, KiwiCan rooms CAS, contact Evy (07) 866 8242 9-10am
 Elim Church Services, Rings Rd, contact Steve (07) 866 6900 10am-12 noon
 Coro Tennis Club-club play, Rings Rd, contact Gayle (07) 866 8063 2pm
 Swissball Training – Hi-Tech Health & Fitness, contact Marlene (07) 866 8019 2pm
 Circuit Training – Hi-Tech Health & Fitness, contact Marlene (07) 866 8019 4pm
 Prayers for dead and healing, Mahamudra Centre, contact (07) 866 6851 5-6pm

Monthly

1st Mon – Coro Patchwork & Quilters Ambulance rooms, contact Jill (07) 866 7484 9.30am-3.30pm

2nd Mon – Friendship Group, contact Jocelyn (07) 866 7101

3rd Mon – Coro Patchwork & Quilters Ambulance rooms, contact Jill (07) 866 7484 9.30am-3.30pm

3rd Mon – Alzheimer's Carers' Group, Retirement Village Hall, bring plate & koha, contact (07) 282 0453 10.30am

1st Tue – Coro Motorcycle Club general business John (07) 866 6776 7.30pm

2nd Tue – Coromandel/Colville Cmty Board, Council Chambers, contact (07) 866 1001 9am

2nd Tue – Public Trust, Harcourts, contact 0800 368 620 by appt

1st Wed – Coro Embroiderers' Guild, Ambulance Station, contact Jill Wilson (07) 866 7484 10am-3pm

1st Wed – Lions Dinner Meeting, Ambulance Rooms; contact Jayne Lister (07) 866 7687 6pm

2nd Wed – Garden Circle, ph Julie Jensen for venue, (07) 866 7546 1pm

3rd Wed – Lions Business Meeting, Ambulance Rooms; contact Jayne Lister (07) 866 7687 7pm

4th Wed – RSA Women's Section, RSA lounge, contact Betty (07) 866 8192 1.30pm

2nd Thu – Coromandel Writers' Group, contact Margaret (07) 866 8862 10.30am-2.30pm

4th Thu – Coro SeniorNet, Trust Waikato Events Ctr, contact Loes (07) 866 8053... 1.30pm

1st Sat – Coro RSA, RSA Hall, contact Errol (07) 866 8845 4-10pm

3rd Sat – Luncheon Ladies, contact Lorraine (07) 866 8144 12pm

3rd Sat – Coro RSA, RSA Hall, contact Errol (07) 866 8845 4-10pm

1st Sun – Coro School of Mines & Historical Sty/Museum, contact (07) 866 8711 4pm

1st Sun – St Andrew's Union church service, Rings Rd, contact (07) 866 8633 10am

2nd Sun – Christ Church service, Tiki Rd, contact Barbara O'Reilly (07) 866 8299 10am

2nd Sun – Young Eagles, Tiki Rd, contact Lisa (07) 866 2055 9am

3rd Sun – St Andrews Union church service, Rings Rd, contact Hilda (07) 866 8633 10am

4th Sun – Christ Church service, Tiki Rd, contact Barbara O'Reilly (07) 866 8299 10am

5th Sun – Christ Church/St Andrew's share 10am

Advertisers' directory

| Company | page |
|--|-------|
| 360 Discovery Ltd | 11 |
| Admirals Arms | 31 |
| Ann Kerr-Bell | 10 |
| Bayleys | 15 |
| Castle Rock Cafe | 21 |
| CILT | 12 |
| Coastal Small Engine Services | 17 |
| Coro Gym | 33 |
| Coromandel-Colville Art Group | 27 |
| Coromandel Cabs | 14 |
| Coromandel Construction | 5 |
| Coromandel Garage Ltd | 16 |
| Coromandel Handyman Services | 27 |
| Coromandel Marine Engineering | 5 |
| Coromandel Marine Farmers' Association | 33 |
| Coromandel Plumbing | 4 |
| Coromandel Quarry Ltd | 23 |
| Coromandel Refrigeration | 30 |
| Driving Creek Railway | 22 |
| Gaia Decorators | 24 |
| Harcourts | 18-19 |
| James and Turner | 6 |
| James Drainage '97 Ltd | 13 |
| Llandem Consulting Engineers | 10 |
| Lynley Ogilvie | 22 |
| Mana | 20 |
| Mercury Bay Community Choir | 14 |
| Papa Aroha Engineering | 21 |
| Peninsula Electrical Services | 4 |
| Pepper Tree Restaurant & Bar | 7 |
| Purnell Jenkison Oliver | 25 |
| Richardsons Real Estate | 8-9 |
| Scott Revell Building Contractor | 20 |
| St John | 7 |
| Star & Garter | 23 |
| Steelcraft Ltd | 13 |
| Tangiaro Kiwi Retreat | 17 |
| TCDC | 29 |
| The Hauraki Taxation Service | 6 |
| The Lighthouse Studio | 26 |
| Waitaia Nursery | 14 |

If your meeting is listed incorrectly, or has been missed out, please email Debbie at corochronicle@gmail.com with the subject "meeting" phone (07) 866 7119 or post details to PO Box 148, Coromandel 3543. Please include contact name and phone number.

Coromandel Town Chronicle

Calendar of events Coromandel Town July 2015

**COROMANDEL.
RUBBISH & RECYCLE
TRANSFER STATION &
E-CYCLE HOURS**
Tuesday and Thursday
1.30pm-5.30pm
Saturday 10.30am-5.30pm
Sunday 11.30am-7.30pm

| MON | TUE | WED | THU | FRI | SAT | SUN |
|---|--|---|---|---|---|---|
| <div><div>New moon</div><div>Full moon</div></div> <div>Tide times and heights from Land Information NZ for Coromandel Harbour. For Thames tides -15min High and -18min Low. Note: Tide heights are different for Thames.</div> <div>Bite times and good fishing ratings supplied by Ken Ring. www.predictweather.com ► = Average fishing, ►► = Very good fishing, ►►►► = Excellent fishing</div> | | | | | | |
| | | 1 High tide 5.58am (2.6m), 6.39pm (2.8m) Low tide 12.14pm (0.5m) ►►►► Best bite 11am/pm | 2 Dancing in the Black Light (see pg 7) Spanish night at Pepper Tree (see ad pg 7) High tide 6.48am (2.7m), 7.24pm (2.9m) Low tide 12.37am (0.4m), 1.01pm (0.4m) ►►►► Best bite 12am/pm | 3 Illume – Winter Festival of Light night market, live music 5.30-9.30pm Frozen Zone and Coro Gym Inaugural Illume Sleigh Relay (see Pg 33) High tide 7.40am (2.8m), 8.11pm (3.0m) Low tide 1.29am (0.4m), 1.47pm (0.3m) ►►►► Best bite 12.30am/pm | 4 Illume – Winter Festival of Light night parade, street party 5.30-10.30pm Neilson Cup Rd2 at Coromandel Golf Course (see pg 32) High tide 8.29am (2.9m), 8.59pm (3.1m) Low tide 2.14am (0.4m), 2.34pm (0.2m) ►► Best bite 1am/pm | 5 High tide 9.19am (2.9m), 9.46pm (3.1m) Low tide 3.04am (0.3m), 3.22pm (0.2m) ►► Best bite 2am/pm |
| 6 Dancing in the Dark (see pg 7) | 7 High tide 11am (2.9m), 11.30pm (3.0m) Low tide 4.46am (0.2m), 5.03pm (0.3m) ►► Best bite 4am/pm | 8 Biodynamic Gardening workshop (see pg 6) | 9 K2 cycle instruction (see pg 33) Mexican night at Pepper Tree (see ad pg 7) High tide 12.24am (3.0m), 12.49pm (2.8m) Low tide 6.33am (0.3m), 6.56pm (0.5m) ►►►► Best bite 6am/pm | 10 "Coromandel Capers" musical revue at Hauraki House 8pm (see pg 26) High tide 1.20am (2.9m), 1.48pm (2.7m) Low tide 7.30am (0.4m), 7.59pm (0.6m) ►►►► Best bite 6.30am/pm | 11 "Coromandel Capers" musical revue at Hauraki House 2pm (see pg 26) High tide 2.17am (2.8m), 2.59pm (2.7m) Low tide 8.29am (0.4m), 9.01pm (0.6m) ►► Best bite 7am/pm | 12 Fishing Club AGM (see pg 33) High tide 3.16am (2.8m), 3.52pm (2.7m) Low tide 9.29am (0.4m), 10.02pm (0.6m) ►► Best bite 8am/pm |
| 13 | 14 Ladies' Young Cup at Coromandel Golf Course (see pg 32) | 15 | 16 Roast dinner night at Pepper Tree (see ad pg 7) | 17 | 18 Neilson Cup Rd3 at Coromandel Golf Course (see pg 32) The Mercury Bay Community Choir – A Winter Sing (see pg 26) High tide 8.34am (2.7m), 8.53pm (2.8m) Low tide 2.16am (0.5m), 2.31pm (0.4m) ►►►► Best bite 1am/pm | 19 High tide 9.16am (2.7m), 9.34pm (2.8m) Low tide 2.59am (0.5m), 3.11pm (0.4m) ►► Best bite 2am/pm |
| 20 Coromandel Town Chronicle DEADLINE for August Issue Dancing in the Dark (see pg 7) | 21 High tide 10.37am (2.6m), 10.53pm (2.7m) Low tide 4.21am (0.6m), 4.31pm (0.6m) ►► Best bite 3am/pm | 22 High tide 11.16am (2.5m), 11.33pm (2.6m) Low tide 5.02am (0.6m), 5.13pm (0.6m) ►► Best bite 4am/pm | 23 Nourishing Restorative Yoga Classes at Mana Retreat Centre (see pg 32) German night at Pepper Tree (see ad pg 7) High tide 11.55am (2.5m) Low tide 5.43am (0.7m), 5.57pm (0.7m) ►►►► Best bite 5am/pm | 24 High tide 12.15am (2.5m), 12.43pm (2.4m) Low tide 6.27am (0.7m), 6.46pm (0.8m) ►►►► Best bite 6am/pm | 25 High tide 1am (2.5m), 1.33pm (2.4m) Low tide 7.14am (0.7m), 7.39pm (0.9m) ►►►► Best bite 6.30am/pm | 26 High tide 1.48am (2.4m), 2.26pm (2.4m) Low tide 8.06am (0.8m), 8.35pm (0.9m) ►►►► Best bite 7am/pm |
| 27 High tide 2.38am (2.4m), 3.26pm (2.4m) Low tide 9.01am (0.7m), 9.32pm (0.8m) ►► Best bite 8am/pm | 28 High tide 3.35am (2.4m), 4.23pm (2.5m) Low tide 9.57am (0.7m), 10.27pm (0.7m) ►► Best bite 9am/pm | 29 High tide 4.32am (2.5m), 5.17pm (2.6m) Low tide 10.53am (0.6m), 11.20pm (0.6m) ►► Best bite 10am/pm | 30 Wine /food matching at Pepper Tree (see ad pg 7) High tide 5.29am (2.6m), 6.09pm (2.8m) Low tide 11.45am (0.4m) ►►►► Best bite 11am/pm | 31 Museum competition entry deadline (see pg 17) | <div><div>Make sure your event gets listed</div><div>To get your event listed, email the details, your name and contact phone number to Debbie at corochronicle@gmail.com with the subject "event". Or post to Jude Publishing, PO Box 148, Coromandel. There is limited space available and will be published subject to space availability, with preference to not-for-profit groups.</div></div> | |

MON

TUE

WED

THU

FRI

SAT

SUN