

March 2019
Volume 24 Issue 3

Coromandel Town Chronicle

Founded and owned by the Coromandel Business Association since 1996

FREE
Community Magazine



Topp Twins in Coromandel

SEE PAGE 4

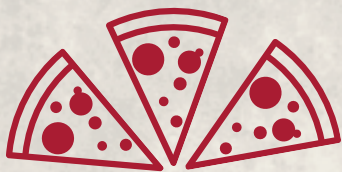
Play with Clay PG 23



Heaviest Snapper PG 27



GIVE A LITTLE SUNDAYS



\$10 PIZZA SUNDAYS

\$20 4 BOTTLES OF BEER

Heineken, Heineken 0%, Tiger, Sol, Xport Citrus, Xport 33

\$1 from every pizza is donated to a local community service.

**ALL DAY EVERY SUNDAY
DINE IN ONLY**


**STAR & GARTER
HOTEL**
Coromandel Town

CONDITIONS APPLY



**Tangiario
Lodge**

Gem of the Northern Coromandel



WEDDINGS & FUNCTIONS
RESTAURANT & BAR
MASSAGE THERAPIST
ACCOMMODATION

Pizza Burgers Steaks Nachos
Fish & Chips Outdoor seating & lots more



DART'S NIGHT
Saturday 23 March @ 5.15pm
Spot Prizes & Bar Tabs to be won



Proudly sponsored by
Stoney Bay Craft Beer



1299 Port Charles Road, Coromandel
www.kiwiretreat.co.nz info@kiwiretreat.co.nz
(07) 866 6614

MERCURY BAY

Art  **ESCAPE**

Visit the Mercury Bay

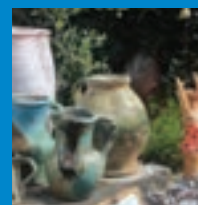
ARTISTS OPEN STUDIOS

2 & 3 and 9 & 10 March 2019

Studios open 10am to 4pm, free entry - Tairua to Opito Bay

1 March Gala Opening
2 March-22 April 2019 Showcase Exhibition
3 March Collective Sculpture with Chris Charteris
4-8 March Art workshops – Chasing Mercury 2019
4-8 March Tuia 250 Whitianga Street Art Festival
8 March Whitianga Music Club Concert

For details, tickets & the free art guide see
www.mercurybayartescape.com



BAYLEYS

Coromandel Town Chronicle

Cover picture: Dames Lynda and Jools Topp supporting Plastic-Free Coromandel Town

The *Coromandel Town Chronicle* is published by Jude Publishing Ltd on behalf of the Coromandel Business Association. It is delivered free to the Coromandel area.

Jude Publishing Ltd
PO Box 148, Coromandel 3543
www.coromandeltownchronicle.co.nz

For advertising please email Debbie on corochronicle@gmail.com or phone 021 235 6648

If you have any news stories that you'd like included please email corochronicle@gmail.com or post to PO Box as above.

If you are not sure how to put an article together for publication then find tips and advice on the website: www.coromandeltownchronicle.co.nz/html/guidelines.html

The Coromandel Town Chronicle is printed with vegetable oil based inks by Print House Ltd, Hamilton. An accredited FSC and PEFC printer. Enviromark Bronze certified.

Coromandel Business Association's Mission Statement: To support business, partnering with our community board, to strengthen and encourage the development of Coromandel Town and environs.

Want to support the CTC?
Live out of town? You need an annual subscription.
\$45 (incl. GST) NZ postage only.
See contact details above.

Deadline for the next issue is 4pm Monday 18 March

Disclaimer: The publisher and its editors of the *Coromandel Town Chronicle* shall not be responsible in any way for opinions expressed in letters and articles contained in the *Coromandel Town Chronicle* or for loss or damage suffered by anyone in reliance upon the information contained therein. Further, no endorsement of any product or service featured or advertised in the *Coromandel Town Chronicle* should be implied or assumed.

Coromandel Business Association
Disclaimer: The opinions of the editor do not necessarily reflect the opinion of the Coromandel Business Association. The Chronicle should be representing all parties and showing a cross section of feedback from the community and we believe this to be the case. The editor of any publication is entitled to a personal opinion and provided this is identified as such then this is acceptable to us.

ISSN 1178-721X (Print)
ISSN 1179-4895 (Online)

Letters

Thank you

Dear Editor,

I would like to thank those who took time out on Waitangi Day to visit the museum. There were 80 folk plus children who came on our free day. One man came to see the loupe that his friend had found and donated to us. Another local man showed his grandchildren the axe that his father had donated. Children were encouraged to suggest a name for our rock-hopping blue penguin. I would think that the children on seeing the "brick" found it hard to relate to the small cell phones of today. Thanks for our duty volunteers.

Regards,

Judy Bronlund, Chairperson of the School of Mines & Historical Society Inc.

Thoughts on a marina

Dear Editor,

Obviously the dredging and disturbance of toxic water is of major concern, but for me there is another issue. In trying to determine the "x factor" which draws people here, almost always it's the unspoiled old worldly charm, unaffected by commercialism, that comes up. Always keeping the long-term effect of development in mind, it is imperative that any growth enhances the unique character of our town. Ask the question – will this development nurture us in our uniqueness? I think not.

Coromandel already has an influx of visitors over the summer months, with accommodation at a premium. Encouraging more people to come during this time would obviously mean developing extra accommodation. Looking at the flow-on effect, winter sets in, boats go into storage, visitors slow down to a dribble, even more places offering accommodation than before, empty and struggling. The same scenario for extending the cafe scene chasing the elusive winter dollar. Building a marina will only accentuate the problem of seasonal trade. It's the winter not summer season we need to look at developing.

We are already known as a town with a thriving art scene. We have many talented artists and craft people in the area. Could we build on this and offer art and craft winter weekend workshops? With so many talented artists, Coromandel could develop its reputation even further into a mecca of creativity.

To draw people to any place, be it cafe, restaurant or town, the place has to have something unique and special which other places don't have on offer. The idea of Barry Brickell's to extend the wharf for an all-tide berthing is exactly that – a unique experience, especially when it incorporates a train ride along the wharf.

I for one don't want to see Coromandel develop along the same lines as Whitianga. Let's be willing to think a little out of the square and look at long-term options that not only enhance our dollar dealings, but also enhance our truly individual character. Guard our uniqueness.

Regards,

Sue Gilmer, Coromandel Town

Dear Editor,

I applaud Gilbert James for the innovation and his energy to propose and create the Gateway project.

I am a quadriplegic who needs a wheelchair to get around, and who has been resident in Coromandel for seven years. I came here to keep an eye on my parents, locals since 1972, who have since both passed. I stayed. Coromandel is good for the soul.

Over this time there has been no wheelchair accessible public transport to and from Coromandel.

Thanks to Gilbert's vision, I can now imagine wheeling into Coromandel, down to the wheelchair accessible dock, on board the accessible Fullers Cat... to be blasted across the Firth to accessible Auckland.

Not only in my lifetime...but perhaps in time for the next round of Americas Cup!

The naysayers could realize that Coromandel is a community, and people are of foremost importance in a community. All people.

Nature has a strong foothold in Coromandel and is well respected. I am positive she can adapt to this inconvenience.

If those so vehemently opposed to this development were in my position, I am sure they too would be very excited about the opportunity to expand their lives.

Chris Wornall, Coromandel Town

Poetry book helps the homeless

Dear Editor,

Unknown to my aunt, Beryl van Donk, I decided to have her poems from three different countries published, all in one book. It took almost three months to find photos to match each poem. This was a great success and undoubtedly helped the many sales.

Beryl is a retired state registered nurse and once ran her own nursing home in Epsom, Auckland. She enjoyed writing from being a small girl. Beryl is the widow of famous Dutch artist Willem van Donk.

To see people having to sleep in cars upset her so much she decided all sales of poetry books should be given to the Salvation Army to help the homeless. So any more books sold will do that. They are for sale at Wyuna Studio in Coromandel Town and Carson's Bookshop in Thames. Warm wishes,
Liz Lightfoot, Hamilton

Send letters to the *Coromandel Town Chronicle*, PO Box 148, Coromandel 3543 or email to corochronicle@gmail.com. Contributions should be kept short, and should not exceed 350 words. They must include name, address and telephone number. The editor reserves the right to reject letters or edit them for clarity and space.

The Topp Twins in Coromandel



Dames Lynda and Jools Topp supporting Plastic-Free Coromandel Town

Plastic-Free Coromandel Town

By Robin Münch

The Plastic-Free Coromandel Town group promotes alternatives to single-use plastic and we think it's wonderful how the community has backed our project. You're the ones using the hundreds of re-usable bags we have sewn or had made to order. You're the ones who have stopped thousands of plastic bags from polluting our environment. You came in droves to the beeswax wrap workshop. 500 of you have liked our Facebook page. You helped us win the Keep NZ Beautiful Community Group award.

We're excited to be discussing new ideas and planning new projects for 2019 and we know you'll be right there with us. We welcome anyone who wants to be involved and have a positive impact on our beautiful environment. And we're happy to help with ideas and practical ways to reduce single-use plastic at home, in your business or for an event. Our contact details are: Plastic-Free Coromandel Town on Facebook; email plasticfreecoromandel@gmail.com or phone Judy on (07) 866 8002.

Follow us on Facebook to find out when the next bag sewing bee, beeswax wrap workshop, competition and other events are happening.

By Debbie Morgan

On Saturday 9 February The Topp Twins came to Coromandel Town. The weather was a bit dubious that day – grey clouds and with forecast for rain. Not good when you are thinking about going to an outdoor event. The weather cleared though and by 5pm the sun was shining and Coromandel Area School grounds were busy with couples and groups sitting on picnic blankets or folding chairs – many with a glass of wine – enjoying the sunshine on a beautiful Coromandel summer evening.

Dames Lynda and Jools Topp entertained the crowds with jokes, singing and audience participation – giving out sausages at one point. It was good to get the opportunity to see them live in our small town. A rare performance – as apparently it is 25 years since they last came to Coromandel Town.



Lions news

By Lion Lyn

Almost a quarter of the way through the year, and as I write, we are yet to have our first business meeting of the year. That will be next week, on 20 February, just before this goes to print! So as always I can only report on what has passed.

February has been a fun month, with our annual BBQ held at a fabulous river front hideaway, just perfect for marauding Lions to eat, drink and be merry. A very pleasant start to our second half of the Lions year. Many, many thanks Peter for allowing us to share your special piece of paradise.

The following weekend The Topp Twins performed on Saturday 9 February and as mentioned last month, we were there with fritters and our smiles. What a neat way to raise funds while having a great time! All monies raised come back to projects for Coromandel, so thanks to everyone for your support.

Firewood is ongoing, and is our other main raiser of funds. Orders are coming in all of the time, which is great, as we do not have the space for storage, so your place is the best place to store!

As always if the Lions are needed for a community event or project, then please don't hesitate to contact us, as we can't help if we don't know! Also if you are wanting to become more involved with community and like-minded people, our little club will welcome new members. Give us a call or simply talk to a Lion – we can be found on Friday nights, around 5pm at the Coromandel Hotel running our usual weekly raffle.

Numbers to ring are President Jean (07) 866 6670, or for firewood (07) 866 7722. Leave a clear message and I will call you back



Rob's 
Small Motor Repairs

**Come along and see us in our new shop at
18 Kapanga Rd (old 4Square)**

Rob & Carolyn 866 7865 or 021 618 601

Coromandel's Premium Accommodation & Management providers..

Luxury Apartments
Holiday Managements
Long Term Rentals
Linen
Cleaning



Luxury Apartments
Holiday Managements
Long Term Rentals
Linen
Cleaning

Diane Arundel Property Manager

265 Kapanga Rd, Coromandel

07 8668803

0274 361729

office@accommodationcoromandel.co.nz

100% Coro Ltd MREINZ

Coromandel Independent Living Trust

CILT

CILT is back at work after a wonderful summer break. We are all excited about the year ahead. The Resource Centre at 45 Tiki Road is open Monday to Thursday, 9am-3pm. We have public computers available for community use, a good quality printer and friendly staff to help you.

We have many different community services operating under one roof – including family support, mental health services, transport assistance, budget advisory, foodbank, lawyers, counsellors and more, so we can link you up with whatever support you may need and put you in touch with the other organisations operating alongside CILT.

Our major focus this year is the creation of a larger, purpose-built Hub to house all of these essential community services. This will be a beautiful, architecturally designed space which is universally accessible and built according to Te Aranga design principles.

CILT Community Wifi network

We are in the early stages of establishing a free Wifi network in the town centre. When complete this will cover the entire town. This initiative is supported by Coromandel

Area School – who are allowing us access to their high speed fibre connection, TCDC, Coromandel Community Board and Trust Waikato.

Stage One has already begun by establishing connection to the School's fibre connection and a wireless link to four key "hotspots" through the town centre. In Stage Two we will be installing additional access points to spread the network wider through the entire town centre.

We are still looking for extra sites to install access points, so if you own a building in town and would like to support the initiative, then please get in touch with Matt: network@cilt.org.nz.

Incredible Years Parent Programme

Parenting can be challenging at times and some support can make a big difference! These sessions involve plenty of time to discuss and practice new ways to manage children's challenging behaviour, get ideas for growing positive social skills in children and find ways to enhance relationships in families. The focus is on children in the 3-8 years age range. In late February we started two of these popular Incredible Years parenting programmes in Whitianga and in Coromandel. While the early stage has begun, it's not too late to join in. Contact the Resource Centre on (07) 866 8358.

The Goldmine and Coromandel RTS

Opening hours at the Refuse Transfer

Station and The Goldmine have moved back to off-peak hours from 25 February. We are open Tuesday, Thursday 11am-4.30pm and Saturday, Sunday and public holidays 11am-5:30pm.

The aim of The Goldmine is to minimise waste to landfill and provide quality second-hand items for sale. Every item sold in the shop helps create a more sustainable environment and CILT's other community projects, like the Kapanga Road Kaumatua flats and the Graeme Dingle Foundation Kiwi Can/Kiwi Kaha programmes in schools.

The crew at the Refuse Transfer Station want to say thanks to everyone for their patience and courtesy throughout the busy holiday season. The Coromandel population swells up to 10 times over the summer so we appreciate everyone's understanding.

Community Van Meanders

The Coromandel Community Services Trust is continuing the popular monthly Community Van Meanders. These trips are for pensioners and people with mobility limitations. A great social excursion to various places around Coromandel. The next trip is on **Friday 8 March**, to Te Kouma for a beachside picnic. From 9.30am-1pm with coffee, tea and biscuits provided. BYO lunch and swimming togs! Book your seat at the Resource Centre on Ph (07) 866 8358.

COROMANDEL & AUCKLAND FERRY

TIMETABLE EFFECTIVE TO 31 AUGUST 2019

Departs Auckland: Pier 4, Quay Street

	M	T	W	T	F	S	S
7 Jan - 3 Feb	8.45 am	8.45 am	8.45 am	8.45 am	6.40 pm	8.45 am	8.45 am
4 Feb - 10 Feb	8.45 am	8.45 am	8.45 am	8.45 am	6.40 pm	8.45 am	8.45 am
11 Feb - 14 Apr	-	8.45 am	-	8.45 am	6.40 pm	8.45 am	8.45 am
15 Apr - 21 Apr	-	8.45 am	-	6.40 pm	8.45 am	8.45 am	8.45 am
22 Apr - 28 Apr	8.45 am	8.45 am	-	8.45 am	6.40 pm	8.45 am	8.45 am
29 Apr - 2 Jun	-	-	-	-	-	8.45 am	8.45 am
3 Jun - 9 Jun	8.45 am	-	-	-	-	8.45 am	8.45 am
10 Jun - 31 Aug	-	-	-	-	-	8.45 am	8.45 am

Departs Coromandel: Hannaford's Wharf

7 Jan - 3 Feb	3.00 pm	3.00 pm	3.00 pm	3.00 pm	8.45 pm	4.30 pm	4.30 pm
4 Feb - 10 Feb	3.00 pm	3.00 pm	4.30 pm	3.00 pm	8.45 pm	4.30 pm	4.30 pm
11 Feb - 14 Apr	-	3.00 pm	-	3.00 pm	8.45 pm	4.30 pm	4.30 pm
15 Apr - 21 Apr	-	3.00 pm	-	8.45 pm	4.30 pm	4.30 pm	4.30 pm
22 Apr - 28 Apr	4.30 pm	3.00 pm	-	4.30 pm	8.45 pm	4.30 pm	4.30 pm
29 Apr - 2 Jun	-	-	-	-	-	4.30 pm	4.30 pm
3 Jun - 9 Jun	4.30 pm	-	-	-	-	4.30 pm	4.30 pm
10 Jun - 31 Aug	-	-	-	-	-	4.30 pm	4.30 pm

Auckland - Coromandel

	ADULT	CHILD	FAMILY
ONE WAY	\$64.00	\$42.00	\$191.00
RETURN	\$98.00	\$64.00	\$292.00

Child: 5-15 years inclusive. Family: 2 adults + 2 children.

Please note:

A Sunday service operates on public holidays, except Christmas day.

In the event of cancellations Fullers360 may arrange alternative transport arrangements.

A ferry bus shuttle will transfer you to and from Coromandel Town (Samuel James Reserve car park) and Hannaford's Wharf. There is no additional fare for this service.

Advance bookings are advisable for all Fullers360 tours and bookable ferry services. We recommend arriving 30 minutes prior to departure to check in. All departures and timetables are subject to change or cancellation due to weather or operational requirements. Prices in this brochure are correct at time of printing and inclusive of GST, and may change without notice. All travel on Fullers360 services and tours is subject to our full terms and conditions of travel, available online at fullers.co.nz.

Fullers 360
EXPERIENCES & CRUISES

book online at fullers.co.nz

/Richardsons

Real Estate Ltd MREINZ / Coromandel
Licensed REAA2008

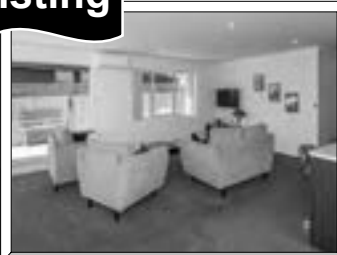
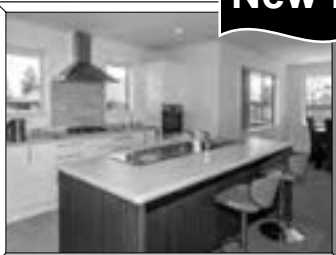
Meet the team... Kim, Robyn,
Melissa, Laurie-Ann & Lynne



New Listing



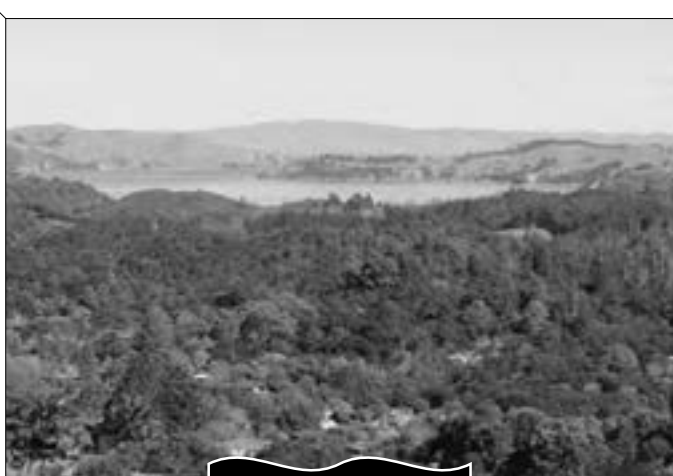
New Listing



* NO LAWNS!!! * Near new brick home within the Greenhills subdivision * Spacious open-plan living leading out to brilliant decking * 3 double brms (master en-suite & walk-in robe) * Large garage * 609m2 section. **\$635,000**



* NOT TOO BIG, NOT TOO SMALL! * Large 2 brm Lockwood with 2 great decking areas * Separate hobby room/studio * Double garage & boat port * Currently being subdivided from a larger lot... subject to issue of new Title. **\$499,000**



New Listing



New Listing



* ABOVE & BEYOND * Wonderful distant harbour & gulf views * Approx 1.1ha bush block with a large majority in QEII National Trust * Plenty of space to build your new home * Approx 4kms from the township. **\$410,000**



* CHOOSE YOUR OWN HOUSE DESIGN * Vacant section within a relatively easy walk of town * Lawns and a selection of native trees * Currently being subdivided from a larger lot... subject to issue of new Title. **\$285,000**

/Richardsons

Real Estate Ltd MREINZ / Coromandel
Licensed REAA2008

Proudly making real estate
a reality for Clients and
Customers for over 58 years

www.richardsons.co.nz

151 Kapanga Road, Coromandel

Ph: 07 866 8900 ~ Kim 021 533174

Robyn 021 448975 & Melissa 027 2498287

Rental Manager ~ Laurie-Ann 027 9276368



INFINITY VIEWS - CONTEMPROARY DESIGN! Set prominently atop the exclusive Wyuna Bay Peninsula. Outstanding vistas of the gulf, islands, harbour and surroundings bush. Stunningly planned 3 brm home, spacious living, dble garage. Paradise! **\$By Negotiation**

NEW... Imagine residing in a wonderful new home, 3 brms, 2 bathrooms, garage & well fenced landscaped section. **\$639,000**



Brand new... just bring your furniture! 3 brms, sep lounge, kitchen/dining/family, double garage, 2 brilliant decks. **\$685,000**

Looking for your first home, or a rental investment? 3 brms, open-plan living, garage. Not many at this price... **\$445,000**

Luxury Lifestyle Living! Extremely private 6.94ha in town, huge 3 brm home, office, garage/carport for 10 vehicles. **\$1,495,000**



Stunningly private 6,650m2 oasis, beautifully landscaped, 3 brms, open-plan living, dble garage, shed, views. **\$830,000**



Country estate, 20.7ha of pasture, spacious 3 brm home, great decking, barn, 3 garages, harbour views. **\$1,595,000** ^{+ GST} (if any)



The enclave of Little Bay is where memories are made! 3 brms, open-plan living, decking, ocean views. **\$799,000**

'Breakaway BnB'. Large 4 brm home set on parklike 5,559m2, 4 x sep studio units, garaging, walk to town. **\$1,350,000** ^{+ GST} (if any)

A superb coastal sanctuary, private 4,021m2 section, 3 brm home + 2 brm studio cottage, 3 x garages. **\$1,175,000**

A Taste of Matarangi

A Taste of Matarangi on **6 April** brings you live music, great food, wine and craft beer, family activities, cooking competitions and charity auctions.

Here is a checklist to get you "Festival Ready".

- Book your shuttle and buy your tickets at Coromandel Adventures or buy online at www.atasteofmatarangi.co.nz \$20 adult, \$40 family, \$5 child, under 5 years free
- Like our Facebook page to get regular updates.
- Check the Terms and Conditions page on the website or pick up a printed copy from Coromandel Adventures.
- Check out our website for everything you want to know about the festival – as well as some great photos – you may see yourself there! Go to the Festival Info drop-down menu to find out about this year's music and bands, the food and beverages that will be available, event news updates, the programme, Kids' Zone, the Cook Off, location and getting there, history of the festival, and how to be a volunteer. You can also see which charities we support and who our sponsors are on our website – thanks to our Gold Sponsors All About Whitianga, Creative Fuel Web Design and Coromandel More FM
- Consider being a part of the Cook Off!

Our festival will be supporting Kuaotunu Land Search and Rescue which is vital in our part of the country. As well as donations raised by the event we'll be auctioning great packages to support our charities.

Fabulous music will entertain you all day building up to the return of headline act The Monroes, performing many styles of music from rock 'n' roll, disco, funk, 80's pop right up to the latest hits – perfect for getting the crowd up and dancing on the Village Green.

First time at this year's festival are locals Crimson Coast performing original Kiwi music. We're also presenting distinctive vocalist Lou'ana Whitney whose repertoire is an eclectic set infused with jazz, soul, blues and funk – always a captivating performance.

Guitar and drums duo Lock & Load from Tauranga are set to make a return and bring festival goers to their feet once again.

If you'd like to showcase your cooking skills, applications are open till mid-March for The Great A Taste of Matarangi Cook Off. Partner up to be one of three pairs of amateur BBQ chefs and cook your favourite recipe for the crowds. Register on our Facebook page or website and click on the link. Conditions apply. <https://form.jotform.co/ATOM2019/bbq-cook-off> or email us at info@atasteofmatarangi.co.nz

Peninsula Party Hire will be providing a large stretch tent, so get to the festival early if you want to grab a spot in the shade. Also festival goers should note there will only be limited space for small gazebos.

See you on **6 April** for another family fun day out.

Animal Rescue Thames

By Alice & John Parris and Sam



Huge thank mews to those who have supported the cats with donations of food, bedding and towels for the cats; has been a huge help to the unit. Also Anonymous who put dollars onto our vet account in December – we usually get a call from the vets to say this has gone in but got a lovely surprise January when we went in for supplies. Thank you, it is truly appreciated

Homed – We have rehomed Missy. This is super special for us as she was one of our fosters that we took on last year. Missy was chosen to go with a lovely lady in Turua for a friend for her dog. We were rung next day lady worried as Missy was not eating, something they do do, for several days until adjusted. Hearing a mew, I queried the sound and she goes, oh she is on my lap. Well for an ex-feral to sit on a lap 24 hours later is a massive miracle, so I told her "If Missy is sitting happily on your lap then don't even worry. She is happy and content". The dog has washed Missy, over the ears, face and neck, so that friendship is also forged and soon they will be inseparable buddies.

Jojo – small, obnoxious ginger white boy has been homed. Lady wanted a ginger, very specific as she had lost her big ginger boy nine months ago and was ready to adopt as she still has an elderly female ginger who won't be thrilled to see small rumbustious ginger thing arrive. We trust he will be a total delight for this lovely lady in Thames.

Rehoming two is brilliant and helps bring numbers down a wee bit. The trio of blacks and all older felines are still with us looking for special forever homes, and we are particular about where and with whom we rehome to, so for those adopting we do ask many questions to ensure we are placing the right cat into the right home. This is never an easy task.

Rescue is currently running on a lower number due to her hospital trips – leaving him indoors to feed and clean. This has not been an easy road but the cats in care take turns at nursing and amusing recovering human. When you are down they are in your face for loving which is truly beautiful, completely unconditional love that supercedes all else. You have never been loved until you are loved by a cat. The ex-ferals are extreme versions of this.

Wanted – donations of cat/kitten food (sachets, biscuits, pet milk), towels, summer bedding. Garage sale items in clean, saleable condition. Homes for all of the older felines still in care waiting patiently for forever homes that are quiet and loving. Meow furr now.

All enquiries purrlease phone Animal Rescue 07 868 2907 (afternoons best) 532 Thames Coast Road, RD 5, Thames 3575

Purnell

LAWYERS

BRENDA FLAY, SOLICITOR:

Travels to Coromandel on Tuesdays.

Please phone the Thames Office (868 8680) for appointments.

PARTNERS: Hayley Green and Brenda Flay

THAMES OFFICE: 611 Mackay Street, P.O. Box 31, Thames

PHONE: 868 8680 **EMAIL:** info@purnell.nz

COROMANDEL OFFICE: Tiki House, Tiki Road

OUR SERVICES

ESTATE PLANNING / PROPERTY / COMMERCIAL

www.purnell.nz

THAMES

WHITIANGA

COROMANDEL

Chartered Accountants

The Hauraki Taxation Service Limited

- For out of town independent accounting advice
- Established 1982
- Approved agents for Inland Revenue Department
- Offices in Coromandel Town & Thames



95 Kapanga Road, Coromandel
Ph/Fax: 07 866-8660

Em: coro@haurakitaxation.co.nz

International Women's Day

By Cheers, Robyn and Marie

Hi ladies, tickets still on sale at Richardson's for our Cancer Charity Breakfast starting at 7.30am on **Friday 8 March**, International Women's Day, so do pop in and buy your ticket... such a worthwhile cause and of course a nice way to start the morning with like-minded ladies celebrating International Women's Day.

Christine Lunn has just donated this quilt to us as she is moving and will not be using the quilt. It has been made as a wall hanging (so has a "sleeve" to assist the hanging) but it is actually quite a large quilt that would comfortably fit on a double bed.

The pattern of this quilt is called Tumbling Blocks. If you have been to Wanaka and visited Puzzle World you will have seen this pattern on a wall hanging there. The pattern looks different from each side of quilt and was a challenge to put together!

Harcourts have kindly offered to display the quilt and sell raffle tickets for us after the breakfast.

We will be drawing this raffle at 1pm in their office on **Easter Saturday 20 April**. Raffle tickets for the quilt are \$2 each or 3 for \$5.

Quilt being raffled



Coromandel Town Seafood Fest

Yes, it's on again **4 May** at Coromandel Area School, 9am to 4pm.

Stalls are available – call Gail 027 466 5131 now to book or see www.coromandelseafoodfest.com.

Just as no two days set the same, this is also true for funerals. Twentymans strive to learn how to tailor, create and bring the best funeral service we can for you.

Funerals tailored for you and your loved one

TWENTYMANS

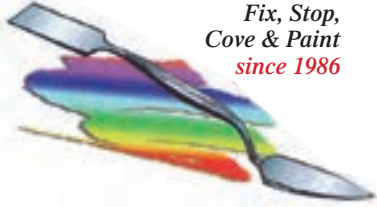
FUNERAL DIRECTORS
Since 1867

07 868 6003

funerals@twentymans.co.nz
www.twentymans.co.nz

Alpha Drywall

Fix, Stop,
Cove & Paint
since 1986



- Plasterboard Fixing, Stopping and Painting specialists
- All grades of stopping including Fibrous, Cove and GibBoard
- We specialise in wallpaper to paint finish upgrades
- Professional, reliable, quality service
- Free quotes

Phone Geoff 022 027 0290
PO Box 177, Coromandel

Email alphadry@gmail.com
AWCI (licenced trademan)



A TASTE OF MATARANGI

6 APRIL 2019

SEARCH & RESCUE
LAND SAR
KUAOTUNU







TICKETS SELLING ONLINE NOW

atasteofmatarangi.co.nz

AND FROM • RICHARDSONS REAL ESTATE MATARANGI • WHITIANGA I-SITE • COROMANDEL ADVENTURES

A FABULOUS DAY OF FOOD,
WINE & MUSIC BY THE BEACH

ALL ABOUT
WHITIANGA
See yourself here

creativefuel
design / print / web

MORE FM
TODAY'S BEST MUSIC MIX



HOLISTIC HEALTH
FOR IMPROVED HEALTH & WELLBEING

PUKU & KERRES
LIQUOR STORE MATARANGI

/Richardsons
Real Estate Ltd MRENZ / Matarangi
Licenced REA2008

MATARANGI
Rate Payers Assoc Inc

COROMANDEL
life



THE MATARANGI BEACH PAPER



PENINSULA PARTY HIRE

Wild things

By Carol Sutherland

Makuku or bittern are like banded rail, cryptic and rarely seen but even more so. Their presence is usually detected by the booming of the males in breeding season. Sometimes they will appear on the margins of a wetland and that is what happened when Abby Noire sighted a bittern in Big Bay.

Makuku are large stocky birds with streaks of different shades of brown down their body. They utilise wetland networks so it is important to keep a series of healthy wetlands throughout the areas for these birds, as their populations are in steep decline.

If you sight a bittern you are one of the lucky few but please let us know as we will pass that information onto Kathi Parr who is monitoring bittern in the Coromandel area.

McGregor Bay Wetland Society "Wild things" slot features wildlife around Coromandel. The McGregor Bay Wetland Society welcomes contributions. mcgregorbaywetland@hotmail.com



SeniorNet

By Loes Beaver



The first get together for this year took place on the 4th with two new members. Our subject for that day was mainly photos – how to save and store in albums.

We meet on Mondays at 4pm with Tom our tutor. Our members bring along their questions and we help them solve any problems. There is a small membership fee and a gold coin donation each lesson.

If you are interested or would like to know more contact me, Loes, at (07) 866 8053

FLOORINGXTRA.CO.NZ

FLOORING XTRA

housetot SAVINGS

Quality Flooring
+ Underlay
+ Installation

*T&C's apply. See in-store for details.

Carpet your home
from **\$3,890***

Quick-Step Laminate
floor from **\$3,790***

500 DAYS NO PAYMENTS AND NO INTEREST*
ON INSTORE PURCHASES \$1,000 & OVER.

Offer ends 31 March 2019. *Lending criteria, \$50 Annual Account Fee, \$55 Establishment or \$35 advance fee, terms and conditions apply. See www.flooringxtra.co.nz for full T&C's.

On All Floors Flooring Xtra, 90 Kopu Road, Thames 07 868 7608
thames@flooringxtra.co.nz

Fagans Flooring Xtra, 68 Albert Street, Whitianga 07 866 2836
whitianga@flooringxtra.co.nz

GaiaDecorators

PAINTING HOMES
ACROSS THE COROMANDEL LIMITED

Mark Gaia 021 295 5532 | 07 866 7485
COROMANDEL | gaiadecorators@gmail.com
www.gaiadecorators.co.nz

Scott Simpson

MP for Coromandel

P Thames 07 866 3129
Kaitiaki 09 252 2586
Kaitiaki 07 549 4332
mp@coromandel-parliament.govt.nz
www.scottsmpson.co.nz

W www.scottsmpson.co.nz

National
Coromandel Branch
1000 Ford Street, Whitianga 07 866 2836

TREE WORK

Call 027 451 2224
or 07 866 8177

www.dynamictreecare.co.nz
Email: dynamictreecare@gmail.com

Hon Scott Simpson MP For Coromandel

Parliament is now back in full swing for the year. Although I've been working throughout our terrific electorate since early January, the government delayed recalling MPs back to Wellington until mid-February, which is later than usual. I'm keen to get into the year, and continue to hold this government to account on the issues that affect us every day.



Successful Coromandel Summer

Because I'm always keen to promote our region and all we have to offer, I keep in touch with business owners and operators around the Peninsula. They've been telling me that this has been a much better summer than last year. Mostly it's because we didn't have to cope with the impact of devastating storms which closed roads and damaged homes. Business folk say they've generally been pleased with visitor numbers and sales volumes. For many local businesses the summer months are crucial. It's during the summer peak that they generate the majority of their annual revenue. Some report difficulties finding staff and for a few their businesses are being limited due to a lack of suitable candidates for vacant positions. Many have voiced concerns about the growing power of trade unions, the number of strikes and changes to industrial relations laws.

Higher Penalties for Food Contamination

Recent events in Australia and here in New Zealand with objects like syringes being deliberately planted in strawberries are worrying. I think we need harsher punishments for those committing crimes like this. National is calling on the government to listen to those in the horticulture and farming sectors and implement stricter punishments for those caught contaminating food in New Zealand.

Deliberate food contamination is serious. It could cripple New Zealand's economy and the reputation of our country as a safe and reliable food source not to mention the livelihoods of farmers and growers throughout the country. It is irresponsible and unacceptable for the government to be ignoring requests to give those responsible for contamination or threats to contaminate food stricter punishments.

I fully support the Crimes (Contamination Offences) Amendment Bill proposed by my colleague Nathan Guy which would help deter would-be criminals from threatening the public with food contamination. I hope that the government can see how beneficial this bill will be for our reputation and people involved in the growing and farming industries.

Coromandel Embroiderers' Guild

By Jenny Penman

Our first Guild Meeting for 2019 was very well attended despite it falling on Waitangi Day. The Show and Tell table was literally overflowing, meaning many of us had been able to spend the Xmas break doing what we enjoy – escaping the kitchen! Amongst the work on the table was the first two completed panels by members to be sent to the nationwide Suffrage in Stitches Project which commemorates the 125th anniversary of Women's Suffrage in NZ. These two members' work beautifully paid tribute to the lives these women (both past relatives) had led and to which we are indebted.

Our petite projects (those done as a group on Guild Day) this year are all to have the theme of Montmellick or Blackwork. Montmellick is a traditional Irish floral whitework embroidery using knots and padded stitches to create texture. Blackwork, sometimes termed Spanish blackwork, is a counted thread embroidery (not necessarily black but a single colour) and because the designs are geometric it is most often stitched on even-weave fabric. The committee members had all been busy making covered notebooks decorated with a Montmellick motif and an attached Blackwork book mark as inspiration and guidance for this first petite project. Our guest speaker, Allie Snow, at our Exhibition last year had wowed us with her collection of notebooks which she fills spontaneously with notes of everyday happenings and bits and pieces which "spark joy" for later embroidery. While we stitchers are very happy to adopt the Marie Kondo test of what we must have/do, that is where the parallel finishes probably as our stashes of fabric, books and threads never diminish – and then there's what to do with the finished piece!

The Guild programme for 2019 looks busy and varied. The February workshop will be taken by an invited tutor Alysnn Midgelow-Marsden. She will teach the folding technique of Zhen Xian Bao and further embellishments to create exquisite Miao embroidery purses. The South West Chinese Miao people create these painted, multi folded and pocketed paper and cloth book-like cases to store their threads, fabrics, needles and pins.

Looking back on 2018 our November Exhibition was an outstanding success and the Guild would like to thank all who supported by coming to view the work. The "Viewer's Choice" Awards were 1st Heather Arthur with her Brazilian embroidered Cottage Garden, 2nd Lettecia Williams Puriri Moth, and 3rd Arlene McLean Cottage Garden bag. The baby shawl raffle was won by a young mother from Fairlie and the groceries went to a Ngatea ticketholder.

Our next Guild Meeting will be on **Wednesday 6 March**.

For further information about the Coromandel Embroiderers' Guild and related activities contact Lettecia Williams (07) 866 6626



North West Welding

Local, Mobile Welding, Fabrication
and Repairs service.

Qualified boilermaker and welder.

Phone Warwick on 0210 856 8785
email nthwestwelding@hotmail.com



**Coromandel
QUARRY &
Contracting Ltd**

- All grades of metal delivered
- Driveways, roading, earthworks

Telephone 07 866 8306

email: richard@cqc.co.nz www.cqc.co.nz

Thinking about a renovation
or new build and need some advice?

"Duncan is a very calm, reliable person. He gets on well with others and can see his way through problems or challenges."



coromandelconstruction.co.nz

duncan@coromandelconstruction.co.nz
(07)866-7796 021-173-7457

Coromandel Bowls Club

By Linda Wright

We are getting ready to host our annual "Seafood Tournament" on **Saturday 2 and Sunday 3 March**; we have 28 teams entered for a very big weekend at the club.

The tournament is kindly sponsored by Goldridge Mussel Farm, Richardsons Real Estate, Coromandel Court Motel, Star & Garter Hotel & Thames Demolition.

The first round of our Summer Cup against Mercury Bay was won by Coromandel, with a great turnout by the local players. We're looking forward to the second round held on **Thursday 14 March**.

We held the first round of Bowls 3/5 Interclub in Coromandel, when we played Thames & Mercury Bay. We won 5 of the 6 games played, a good start to the Twilight Interclub.

Another Thames Valley title was won by Jason Dickison who won the Men's U/8 Champ/Champs singles.

Our next open tournament is on Wednesday 13 February, Open Optional 2x4x2 Pairs, kindly sponsored by Tidewater Motel & Tourist Park, with the results next Chronicle.

We have 20 teams playing our second session of Twilight Bowls, kindly sponsored by Pepper Tree Restaurant & Bar. All the teams are enjoying the summer evening bowls, with much noise, laughter and good bowls.

Thursday Club Day Bowls are still going well. Visitors are most welcome to join us. Names in by 9.30am when a draw is done for morning bowls, and a redraw is done for anyone wanting to play in the afternoon.

The Club Social Friday and Saturday nights we are open from 3.30pm to 7pm.

President Linda Wright (07) 866 8440. 027 651 3477

Combined Clubs Of Coromandel
THE CLUB



Jason Dickison winner of the Thames Valley Men's U/8 Champ/Champs

RSA news

By Pat Williams

Apologies for missing last months' Chronicle. Coming back down to earth after being away for two weeks and, it seemed, lots of other stuff going.

Firstly our Christmas BBQ with music to follow went off wonderfully. That was on 15 December. Member Raewyn Trail with friend Steve Santos gave us a great night and some fit ones enjoyed a whirl around the Dance Floor!

22 December we had long-time Member C. Topia entertain us. These evenings make our Club nights special and we say a big thank you to you. Over December/January we had lots of visitors, out of town RSA members and their friends and also folk from the NZ Motor Caravan Assoc.

Our AGM was held on 9 February with a very good attendance of members, so very pleasing.

Executive Committee Members elected: Kevin Stone – President, S.Walters – Vice President. A.Stewart – Co. Vice President, Secretary Lyn Williams.

Treasurer Anne-Marie Creech. Committee Members: M.Mead – Membership. M.Stone – Welfare, P.Thompson, P.Williams, B.Excell, A.Franklyn. Patron – Reg Canty. Padre – John Gaffikin-Cown.

On **30 March** we are hosting the Vintage Military Vehicles Club. They visited us a few years back and we look forward to seeing them again. The vehicles will be at the Club from 4pm on that day so anyone interested could pop up for a looksee. This year Poppy Day will be **12 April** and the theme is "We are all Family".

Quote of the month: "Where you are going is more important than where you stand."

Coromandel Garden Circle

By Jenny Penman

The Garden Circle has had a long break since last December and as the deadline for this March Chronicle article falls before our meeting again in February, rather than reporting on past events it will be looking forward anticipating coming ones. Our March meeting will be held at a member's house on Wyuna Bay Road where the struggles of establishing new garden areas over this outstandingly hot summer, reliant only on tank water, will be all too evident. It is amazing just how well some plants do though, and when living in an environment of saturating winters and desiccating summers – not to mention that clay! – the old adage of "Right Plant Right Place" is all so important. Kudos must be given to that old familiar the Canna Lily. They come in such a variety of flower and leaf colours, and not only just keep on going on but strive to fill any area they are given and beyond. The "elephant-eared" black taro has proven equally indestructible. And where would we be without the huge variety of bromeliads. Hopefully they are enough to provide some interest, and since gardeners are a sympathetic bunch the comments will no doubt be positive and encouraging. And helpful, which is a great reason for being a GC member. Some light entertainment will be given as we all try our hand at making a "kokedama" – a string garden or poor man's bonsai as they are commonly called in Japan. This could quite literally have us in knots.

Our March meeting will be our AGM on **Wednesday 13 March** at The Combined Club, Woollams Ave. Some of our long-standing committee members are regrettably standing down but we look forward to new members with the freshness they bring.

Our programme for the year includes talks, demonstrations and day trips to places of interest and events. We meet the second Wednesday of the month, usually at 1pm. For more information please contact Patricia Whimp 027 498 5227

WANT NATIVE NURSERY & EDIBLES WAITAIA RD, KUAOTUNU

A wide range of beautiful natives,
palms and fruit trees.
Potting mix, compost, mulch, chook manure.

Open Thursday- Sunday 9-5 or by phone appointment

Please phone Claire & Colin Hill 07 869 5910

Coromandel Garage Ltd

What we offer:

- Service and repairs on all makes and models
- WOF's
- Motorcycle WOF's

- Pensioner WOF's \$40
- Call out's & tow in's
- LPG bottle swap & filling
- Car & trailer hire

BP Card
Accepted

Best Value
for your money
with over 40 years of
combined experience
from our two
fully qualified
mechanics.

Coromandel Garage Ltd, 226 Wharf Rd, Coromandel. 07 866 8736

Proprietors: Darius and Hilary Visser

g.a.s.
gasoline alley services

OUR COROMANDEL



News from Thames-Coromandel District Council

March 2019

The Coromandel Citizens Hall

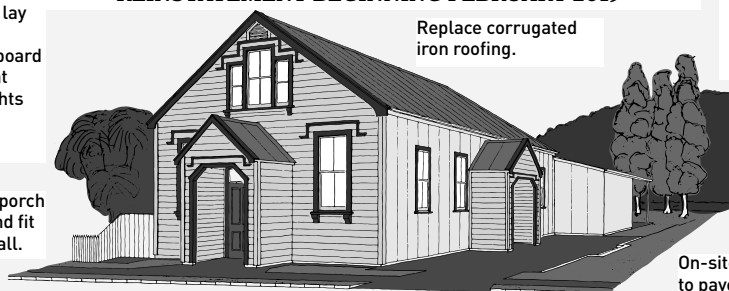
Works to reinstate the hall back to its former self started on 11 February 2019. It is expected that these works will take place over a few months and will be completed by the end of June. In addition to Council funding, the Coromandel Bizarre Trust and Lotteries Community Facilities have generously contributed towards these works. www.tcdc.govt.nz/corohallproject

INTERIOR WORK:

- Re-pile and replace floor framing and lay new flooring
- Confirm existing board linings and repaint
- New electrical lights and heaters

Rebuild front entry porch to match original and fit double doors into hall.

Built 1897
REINSTATEMENT BEGINNING FEBRUARY 2019



Replace corrugated iron roofing.

- Remove RSA annexe, fit new windows and clad side wall in corrugated iron as original
- Rebuild side entry porch to match original and fit double doors into hall

On-site vehicle access to paved courtyard.



New mural for toilets at Oamaru Bay

The public toilets at Oamaru Bay, north of Coromandel Town, is sporting a new mural (pictured) by local Coromandel artist Rebekah Pearson.

The paint for the mural was sponsored by our Council. The mural, a characterised underwater scene of the Oamaru coastline, gives estimated decomposition rates of common marine debris.

"It upsets me so much to see rubbish thrown into the bush and the amount of plastic that washes up on the beaches," says Rebekah. "I'm loving the recent light that has been shone on cleaning up our waterways and the enthusiasm of the Coromandel community in reducing plastic. I have completed numerous murals around the coast to remind everyone it's up to all of us to look after our environment and reduce our impact as much as possible."

Check out Rebekah's website for images of her other works www.rebekahpearson.com

Coromandel 200

(200 Years of Coromandel)



In recognition of the 200th anniversary of the HMS Coromandel sailing into Coromandel Harbour in 1820, a small working group of passionate community members have joined together to make sure the anniversary is acknowledged appropriately.

The next meeting is 11 March 2019 at 1pm 355 Kapanga Road, Coromandel meeting room. www.tcdc.govt.nz/coro200

Workshops aimed at demystifying how our Council works

The sessions will cover how budgets and rates are structured and how activities are funded.

These two-hour workshops start at 5.15pm and are open to anyone interested in how our local government works, including those considering standing as a candidate in October's local elections.

6 March – Mercury Bay TCDC office, 10 Monk St, Whitianga

12 March – Thames War Memorial Civic Centre, 200 Mary St

www.tcdc.govt.nz/elections

COROMANDEL MARINE GATEWAY



Artist's impression.

The project being proposed by Pita Street Developments to develop a marine facility with potential for a commuter ferry service between Coromandel Town and Auckland. We are pleased to see progress made on the business case and sediment sampling. If you would like to chat with the project team the next scheduled drop-in date is on Tuesday 12 March, 9-3pm at the Old Post Office in town at 190 Kapanga Road. coromandelmarinegateway.nz

Pier Trust Project

Our Council also met with the Pier Trust members on 14 February and will continue to discuss ways to facilitate them seeking funding to look at the feasibility of their proposal to develop a pier extending from Coromandel Wharf. This was first mooted by the late Driving Creek founder Barry Brickell. www.coromandelpier.wordpress.com

Kerbside Collections

Our non-summer Kerbside schedule has begun. Check the schedule for your area on our website at

www.tcdc.govt.nz/kerbside

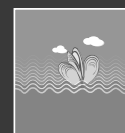


Please remember to put your blue Council rubbish bag, wheelie bin for non-glass recycling and crate for glass recycling on the kerbside by the road the morning of the scheduled collection day.

Please don't hang rubbish bags from trees or poles or leave in cages.

Our non-summer Refuse Transfer Station (RTS) hours are now in effect. Check RTS hours and locations at

www.tcdc.govt.nz/rts



Coromandel
-Colville
Community Board
UPDATE

Next Meeting. The Coromandel-Colville Community Board will next meet at 9am on 9 April in the Coromandel Service Centre, 355 Kapanga Rd, Coromandel.



Get our free eNewsletters!
www.tcdc.govt.nz/subscribe



www.facebook.com/ThamesCoromandelDistrictCouncil

www.coromandel.govt.nz

customer.services@tcdc.govt.nz

Private Bag, 515 Mackay St, Thames

Phone: 07 868 0200

Mahamudra Centre

By Roy Fraser

Starting with the Lunar New Year on 5 February there is a period of 15 days during which Buddha Shakyamuni performed a series of miracles in order to show the truth of his Dharma Teaching to other spiritual traditions. At Mahamudra Centre we have been celebrating this by reciting various Sutras between 11am and 12pm daily.

Over the weekend of **15-17 March** we have a weekend course "Relax, Reflect, Revive". During this weekend we will be offering led meditations with Roy Fraser, Qi Gong with Khongor Tsedendamba and Yoga with Kate Shelly. On Saturday afternoon there will also be the options of receiving Reiki with Jan van der Vliet and Massage with Sarah Taylor by appointment, or resting and going to the beach or walking. Please see our website for details, mahamudra.org.nz.

Morning meditation times will change slightly during March. Kate will continue to lead Monday and Tuesday at 8.30am while I will lead other days at 9am after my school bus run. The purpose of these short sessions to offer techniques which can be used during a regular practice session of your own and is suitable for beginners.

The ever popular Community Lunch will continue every 2nd Friday. Do come and enjoy Carey's delicious vegetarian meals and catch up with the regulars, **1, 15, and 29 March** at midday.

As many of you know our director for the last 10 years, Venerable Nangsal, has completed her stint and I have been looking after things for the last year. We are very pleased to announce Jan van der Vliet has been appointed as the new director and will take over on **1 April**. Jan has previously been manager at the Centre and is currently one of our Trustees. It is the same Jan as mentioned above as a Reiki Master and he brings much valuable experience to the role.

The Earth Pig Year is said to be good for generating wealth but more importantly for personal growth. May it be the year of your personal spiritual development.

Educating Ourselves

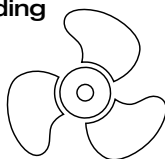
By Catherine Delahunty

I have just come back from Waitangi Day at Waitangi (for the 19th time) and although the north is beautiful, it's not home. However some of the same issues that were raised there are just like home. There were debates over racism, 1080, sewage costs and pollution, conservation of heritage and more. I have been thinking about the debate that arose around Waitangi Day about Te Tiriti education in schools. Actually Te Tiriti education is needed outside schools as well and there are a number of groups in Hauraki/Coromandel who organise their own education so that their staff and volunteers know where we are and what our Te Tiriti commitments are about. I salute those groups for being proactive. Any history is contested history and the only way we can safely teach a history of this country is by making sure we ask the tangata whenua of the place we are privileged to live in to help our children understand what happened to their great-grandparents who were children during the great dispossession of land and resources. How Te Tiriti was created and what was agreed to is one story, the breaching of the agreement by land hungry governments and settlers is another. But our children need to see and feel the relevance to them and to this place by a creative and respectful process of education under the guidance of the elders of Hauraki. Yet another request to people already fully stretched in their community life and work! But if the Crown was willing to listen to them and we were willing to listen to them, what a different country this could be.

Waitangi was also alive with discussions on environmental issues. The tourism was huge and the giant tourist ship floated in the Bay. Sadly all that tourism has not built wealth for the people of that area and the Bay of Islands struggles with wastewater pollution in a number of places. We choose to see development and more tourists as wealth but the real wealth is our natural resources being sustained. If water is polluted, the food chain is polluted, the fish are at risk and the whole cycle of life undermined. We need a more rigorous education about the relationship we have with the sea and with the land. While people who want more tourist dollars are working on how to engineer nature, nature herself is throwing our ignorance and exploitation back in our faces. As I write this, Nelson rural areas are burning to an extent I have never heard of before. The summer heat has broken records. Sea level changes in our harbours and coasts are inevitable. Everything we do needs scrutiny. There are chemicals in our sewage which are more persistent in the environment and more carcinogenic than the ones that people focus on. One example is a chemical called Triclosan used in some soaps and wipes etc., which I tried to ban while in Parliament. The long-term impact of these products is deadly and I had to educate myself to understand this. Education about the environment is not just plastic bags and whaling issues, it's about the decisions we make in the political institutions as well as the supermarkets. Are we going to look after this place for the long-term and embrace the painful history of colonisation and environmental destruction to learn how to do better? Or are we going to turn Coromandel Town into some kind of Queenstown where the rich have so much of the land and the streets are choked with visitors straining the infrastructure? Of course we welcome visitors here but let's educate ourselves about the end game of unlimited growth. We reject gold mining for good reason and because we have alternatives, let's make those alternatives life affirming and based on the lessons of the past including our Te Tiriti history and our current opportunity to heal the damage done.


COROMANDEL MARINE ENGINEERING
MARINE ENGINEERING & OUTBOARD SERVICING

- All makes, model & inboards serviced.
- Full computer diagnostics available.
- New & second-hand outboards for sale.
- Retailers for marine products - inc batteries, oils, plugs, Saltaway products.
- Aluminium & stainless welding by Certified Welders.



Telephone
 Workshop/office:
07 866 8004
Grant: 028 2580 2351
Jackson: 021 059 7542

116, The 309 Road, Coromandel - 1km from the main road.



**Driving
 Creek
 Railway**

COROMANDEL • NEW ZEALAND

Adventures in Art, Engineering and Conservation

Tours will be at the following times
 until 1 May:

9.00am, 10.15am, 11.30am, 12.45pm, 2.00pm,
 3.15pm, 4.30pm and 5.45pm

**(please ensure that you arrive 20 minutes
 prior to these departure times)**

Bookings advisable for all tours

Phone 07 866 8703 or 0800 DC RAIL

Email: bookings@dcrail.nz www.dcrail.nz

380 Driving Creek Road, Coromandel 3506

Grey Power Association Coromandel

By John Rabarts. President

Ants and mice. You may recall we have been following up on ways to get rid of ants. The only suggestion this month has been to use lemon juice – you can buy it in pretty little bottles from the grocery shop – but we already covered putting lemon pieces by ant tracks so we won't mention it this time. One solution we suggested way back months ago was to use rolled oats. Which one reader pointed out brought mice into the home. My solution to that was to get a kitten and train it to catch mice, or maybe get a cat that already catches mice. But not everyone wants to have a cat, even if it starts out as a beautiful fluffy kitten. So what about catching those mice. Another reader has the answer. "Use a mice trap!" But more than that was the advice about what to use as bait. They suggest that "mice just go crazy over chocolate". So soften a piece of chocolate and put that on your trap. Set it down where the mice are coming in. "Whack!!" goes the trap. Goodbye mouse – or mice if more than one are after the rolled oats, or anything else you have left around the house for that matter.

Call for government support for rural rest homes

From a political party media release: (Grey Power is politically neutral so the party is not identified here, but the concept seems sensible to me.) "Rural rest homes are an essential part of the aged care sector, and of their communities. They must be adequately supported by government funding to continue to provide their services. Rest homes employ local staff. They are purchasers of local produce and services. They are integral to the prosperity of regional economics. It is useless for politicians to talk about regional development while allowing rest homes, medical clinics, schools, police services, post offices and telephone landlines to be downgraded or closed. There's another reason to help our rest homes and facilities for the elderly. The societal one of keeping older folk near their families/whanau. This is as essential for friends and relatives – younger or older – as it is for the residents themselves." And a statement of final assessment: "It's time for government – whoever they may be – to upgrade their priorities – to spend less on debt servicing or foreign aid and more on caring for our people."

Sticky zip? To make zips run smoother, get a soft pencil, run the nib along the zip from one end to the other, zip up and down a few times. The zip should run smoother. (The "lead" in pencils is dry lubricant "graphite".) The softer the pencil (in the "B" numbers up to B6), the better this works. It may also work on the stay on your squeaky car door. Open the door, rub the pencil full length of the stay, top and underneath and open and close the door a few times. This may not work on plastic door stays like mine. But try rubbing pencil graphite on your keys, and feel them work more smoothly in the lock.

Coromandel Grey Power members get a newsletter and notice of our regular Grey Power meetings. Enquiries to join please contact Membership Secretary Carol Carson on (07) 866 7172. Or text John Rabarts on 022 611 5717. My cell phone doesn't receive voice calls where I live and I can't access left messages. Comes of living in the supposed 5% of the country which doesn't have cell phone coverage. But text messages get through, though often delayed



Coromandel Patchwork and Quilters

By Jenny Till

We had our first meeting for 2019 on Monday 4 February, so there is very little to report.

Everyone enjoyed catching up after the break, probably more talking than sewing done that day.

We have our AGM coming up on 18 February.

Every year we have a main project that is worked on during the year. Most years there is a quilt to make for those that are interested. However this year we are just going with a "theme" which is going to be Christmas.

Members are going to bring along "Christmas" items that they have made in the past for others to see and get ideas.

We also have an extensive library of patchwork books to scour.

Examples of items that will be made are Christmas tree decorations, table runners, placemats, wall hangings, Christmas stockings, etc.

It will be fun sharing ideas and patterns.

As always members can work on anything they want or choose to follow the theme.

We meet on the 1st, 3rd and (5th) Monday of every month in the St John hall. 9 30am start, 10am morning tea, notices and show and tell.

President Raewyn Penrose (07) 866 8880, Secretary Sharon Currie (07) 866 8762



A fabulous quilt that Sue Smith made for her 5-year-old granddaughter Kayla

If you are looking for unique creations filled with Coromandel inspired talent, come and visit our Gallery. We are located through the courtyard of the Foragers Kitchen Cafe (next to the Colville Store)

March Hours:

Open 6 days, Tuesday - Sunday 10am – 4pm

We would love to see you!!



We welcome your feedback and hope you like our FB page @back room gallery

Whitianga Water Cartage Ltd
Need water - don't run out



Call Graham today
0274817260

redtruck50@outlook.com

A load of the good stuff!

Harcourts Coromandel



SEA VIEWS



Coromandel - Mountains, Sea, Sunset from your Front Porch

4 min drive to Coro Town. 3 bedroom wood home set on 2.5ha of bush. Outstanding location, views over the lush Coromandel coastline. Private and peaceful, this secluded hideaway is surrounded only by nature. Easy driveway in. The latest in high tech computer controlled solar power system for hot water and electricity, gas hobs and oven, plus a backup generator and gas califont. Internet access available.

For Sale \$725,000

www.harcourts.co.nz/CO1899

CAMP COTTAGE



Kuaotunu - Contemporary Cottage

This IS within the Kuaotunu Motor Camp comprises two Lots allowing extra space for guests to tent and park. The modern contemporary cottage including a wrap around wooden deck, 2 bedrooms and 1 bathroom.

For Sale \$299,000

www.harcourts.co.nz/WI21290

SECTION



Coromandel - 5min From Town

On the edge of Kikowhakarere Bay. Think of the options you would have with this blank canvas. Power is to the road and by the road is your gate. The all afternoon sun warms you as you sit watching the view. 809sqm (mol).

For Sale \$285,000

www.harcourts.co.nz/CO1897

SECTION



Coromandel - Near The Golf Course

Gorgeous flat sunny land to play on. You will adore looking out upon the ever changing light dancing on the surrounding bush clad hills. Landscape to your heart's desire to create your own sweet, private oasis. 2682 sqm (mol).

For Sale \$395,000

www.harcourts.co.nz/CO1896



LIFESTYLE



The 309 Road - Knockout Lifestyle

This great 21ha block has some flat grazing, and borders the Mahakirau Stream with safe swimming, kayaking, and even trout fishing. Easily accessed on tar sealed roads just 12mins from Whitianga.

Price By Negotiation Over \$700,000

www.harcourts.co.nz/WI21363

Harcourts "With you all the way"

NZ's Most Trusted Real Estate Agency

2013, 2014, 2015, 2016, 2017 & 2018 (Readers Digest Annual Business Survey)



SEA VIEWS



Colville - Off Grid & On Point...

This absolutely captivating Colville lifestyle block, 5 mins north of Colville comprises 27.55ha of native bush and pine and a substantial 4 bedroom, 3 bathroom home. There are spectacular views of Waiawau Bay and out to Cuvier Island, wonderful peace, seclusion and tranquillity. There is hunting, if desired, virtually at your doorstep, and stunning native flora and fauna surrounds you. Internet access available.

Price By Negotiation

www.harcourts.co.nz/CO3857

CLOSE TO TOWN



Coromandel - Room For The Boats AND The Family

3 bedrooms upstairs with 2 bathrooms. Large rumpus downstairs with bathroom. Double garage with doors 3m high by 2.54 wide. Ramp access for mobility - live upstairs, leave the downstairs for the visiting family. 558 sqm (mol.)

For Sale \$675,000

www.harcourts.co.nz/CO1900

NEW LISTING



Kennedy Bay - Your Own Plot To Kick Back On

Your own 1637m2 (mol) section on the hill you have a stunning vista of the mountains AND the sea. Camp on it like it is, using the existing old garage and studio room. When you're ready you could put a cabin on it.

For Sale \$275,000

www.harcourts.co.nz/CO1901

BUSH BLOCKS



Colville - Three Beautiful Land Titles - Buy One or All

\$839,000 for all or enquire for separate title prices.

This stunning bush and pine block is just north of Colville. Peace, privacy, hunting at your doorstep and genuinely majestic views to die for.

The 33.929ha block is in three titles; Title 1 is 1,214sqm, Title 2 is 13ha and Title 3 is 20ha (has the dwelling).

For Sale \$839,000

www.harcourts.co.nz/CO3854



Dayle AREINZ
Sales Manager
0274 336 862



Dave
Director/Sales
0274 918 420



Caro
Sales
021 0291 5531



Raewyn
Sales
021 0201 9111



Anna
Office Assistant
07 866 8260

Library News

By Raewyn McKinney

As mentioned in the January edition of the Chronicle, one new member of the library was to be drawn as the winner of the book *Dark Sacred Night* by Michael Connelly. Well, the draw has been made, and the lucky winner is Marthe Nowotny. Congratulations Marthe, and we hope you enjoy the book.

As usual, we have new additions to the library, and these include the latest works from Steve Cavanagh, Jane Fallon, Sally Hepworth, Simon Kernick, Jill Mansell and Danielle Steel.

We have also purchased:

***A Long Night in Paris* by Dov Alfon**

When an Israeli tech entrepreneur disappears from Charles de Gaulle airport with a woman in red, logic dictates youthful indiscretion. But Israel is on a state of high alert nonetheless. Colonel Zeev Abadi, the new head of Special Section, just happens to have arrived on the same flight. For Commissaire Leger of the Paris Police coincidences have their reasons, and most are suspect. When a second young Israeli is kidnapped soon after arriving on the same flight, his suspicions are confirmed – and a diplomatic incident looms.

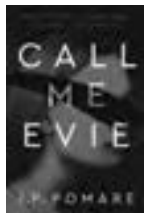
***The Binding* by Bridget Collins**

Emmett Farmer is working in the fields when a letter arrives summoning him to begin an apprenticeship. He will work for a Bookbinder, a vocation that arouses fear, superstition and prejudice.

He will learn to hand-craft beautiful volumes, and within each he will capture something unique and extraordinary: a memory. In a vault under his mentor's workshop, row upon row of books are meticulously stored and recorded. Then one day Emmett makes an astonishing discovery: one of them has his name on it.

***The Silent Patient* by Alex Michaelides**

Alicia Berenson writes a diary as a release, an outlet – and to prove to her beloved husband that everything is fine. She can't bear the thought of worrying Gabriel, or causing him pain. Until, late one evening, Alicia shoots Gabriel five times and then never speaks another word.



Forensic psychotherapist Theo Faber is convinced he can successfully treat Alicia, where all others have failed. And if she speaks, would he want to hear the truth?

***Call Me Evie* by J P Pomare**

A seventeen-year-old girl struggles to remember the role she played on the night her life changed forever...

Evie and her Uncle Jim have just moved to the small, insular town in New Zealand – a far cry from their hometown of Melbourne.

But Evie isn't her real name. And Jim isn't really her uncle.

Jim tells Evie she did something terrible back home, that he's hiding her to protect her... As fragments of her memory start to return, she starts to wonder if Jim is really her saviour... or her captor.

The library is open from 10am to 1pm from Monday to Friday; and 10am to 12 noon on Saturday

**Papa Aroha
Engineering
LIMITED**

**Now servicing all makes & models of
Lawnmowers,
Ride-on Mowers,
Chainsaws and Sharpening,
Gen Sets,
all Small Engines,
Boat Tractors
and Quad bikes**



Light Engineering & Machining

MIKE McCALL • 07 866 8469 • 027 223 7919

**1060 Colville Road, Coromandel
Email: mikepapeng@gmail.com**

**Colville Easter Festival
19-22 April**

Here we go again.

Two nights of music, a variety show and daily workshops.

Colville Sings Down Under Hit songs, will open the festival on **19 April** 7.30pm. 20 local singers will entertain as solo acts, duos and some with support musicians. Songs will be a surprise on the night. We are sure you'll find some of your favourites on the programme (a more streamlined show this year – was a bit long last time).

Important to buy tickets in advance, last two years have sold out. Details for tickets below.

Saturday 20 April night is Big Music Night. Confirmed bands: Cloak Bay, Stay Foolish with Dbl Dbl as MC. Both exciting up and coming young musicians. Two more bands to be announced very soon.

Sunday 21 April – Variety Show for all ages. Still in planning, almost done.

Watch out for posters in Coromandel, April's Chronicle, Colville Panui, FB and our website: colvilleartsfestival.co.nz.

Sculptures are on the go, will be displayed in the hall grounds and around town.

Food/tea/coffee will be available or served on each night.

Workshops planned to date: Beeswax Wraps, Wool Weaving, Needle Felting Workshop, Tibetan Art Workshop with a Tibetan Monk, and lastly, Jungle Animals Workshop using chalk and oil pastels for children, plus Mono Printing for adults.

Be sure to register for workshops as space is limited and buy your ticket in advance for shows.

All events are in the local Colville Hall, so rain or shine – it's on.

Contact Ella and Steve 027 487 5131, 021 711 489, CSSC (07) 866 6920, cssc@colville.org.nz

**Llandem Consulting Engineers**

Derek Stewart
CP Eng MIPENZ

- Structural
- Civil
- Geotechnical

llandemengineering@gmail.com
(07) 866 6704
027 442 4234

**Himalaya shop : Colville**

The Himalaya shop will not be open every day in March month. We will however be open most days. If you are coming up to visit it's best to phone or text to check that we are open on that day. We will be closing and packing the shop for the winter from 1st April so we WILL NOT be open over the Easter period this year. phone us on 07 8667 224 shop, 07 8666 865 home. Anette :021 139 7838 robnnet@yahoo.com
March opening hours: 10 a.m. to approx. 3 p.m. / 3.30 p.m.



Ann's Good News, Naturally

Prevent Root Canals and Heart Disease

Do you have root canals? Do you have heart related diseases?

Did you know that your overall oral and dental health affects all of your body systems?

If your finger, kidney, liver or any other organ dies, it will have to be removed so that bacterial necrosis will not set in and kill you. It is unnatural to keep anything that is dead in the body.

Root canals are dead teeth, which we know provide one of the worst sources of chronic bacterial toxicity in your body.

This silent poisoning not only comes from bacteria within the root canal tooth, but also the gums and bones adjacent to it, and it can take decades before symptoms of degenerative disease resulting from this form of silent poisoning becomes apparent.

Many cardiologists, oncologists and neurologists are aware that a dead tooth in their patient's mouth serves as an incubator for anaerobic bacteria that produce some of the deadliest toxins in existence. The bacteria and toxins enter the bloodstream and lymphatic tissue, and travel to any point of the body. Thereby afflicting disease to that tissue or organ. When the bacteria found in root canals were transferred to rabbits in an experiment, 80 to 100 percent of these animals developed the same diseases as the human donors. Heart disease, for example, could be transferred 100 per cent of the time.

When a root canal is performed, only the nerves from the main canal of the dead tooth are removed. The nerves in the thousands of "side" microscopic dead canals are left. Removing pain sensing nerves from a dead tooth does not "cure" a tooth. The longer the root canal treated teeth stay inside your body, the more your immune system becomes compromised. The ongoing inflammatory immune response combined with destructive bacteria will cause serious illness later in life. This toxicity invades all organ systems and can lead to a plethora of diseases.

The most frequent of all of the chronic and degenerative diseases originating from root canal filled teeth and gum disease are heart and circulatory diseases, followed by diseases of the joints, arthritic disorders and autoimmune disorders, alongside brain and nervous system diseases.

What to do

The correct treatment protocol needs to be in a specific sequence, to prevent further damage to your body at a cellular level.

Antibiotics are not the answer because they explode the bacteria, creating hundreds of pieces of "endotoxins", causing even more work for your immune system. Also, antibiotics destroy your beneficial gut bacteria which also dampens your immune system.

Prevent and treat ongoing illness

Good diet and lifestyle – Prevent dental problems and subsequent chronic diseases. A healthy diet rich in whole foods and low in processed carbs, right from preconception, birth and childhood, is always your best protective measure. Good food can be medicinal and anti-inflammatory. Bad food causes inflammation and toxicity. How good are your food choices?

Functional and integrative dentist – Contact me for referrals.

Functional and integrative naturopathy – I can help you.

Live blood analysis – Assess cellular health, liver, immune, cardiovascular, inflammation and nutritional aspects of your health. Also, leaky gut and candida.

More good news

Minerals from the foods you eat are required for teeth and bone structural and functional quality. Silica acts in the body as a calcium reorganiser. It works best with essential calcium fluoride which is a tissue strengthener. Note – it is the toxic sodium fluoride that is in toothpaste and in some council water.



Natural Medical Centre

The natural alternative for all your health requirements

At Tiki House,
Coromandel.

For appointments,
phone or text: 021 046 1647
or email: annk-b@ps.gen.nz
www.naturalmedicalcentre.co.nz

Ann Kerr-Bell

B.Hlth.Sc. (Comp.Med.)
Adv.Dip.Naturopathy
Adv.Dip.Med.Herb. MNZAMH
Naturopath
Medical Herbalist
Nutritionist
Massage Therapist

Heart Beat – St John Ambulance Coromandel/Colville

By Julie Scampton, Station Manager,
Coromandel



Help us to help you – consider a medical alarm

Falling is more of an issue as we age. One in three New Zealanders aged 65 years and over will experience a fall this year. For people over the age of 80, the chances increase to 1 in 2.

Falls are the second most common reason for phoning 111 for an ambulance.

Medical alarms help thousands of New Zealanders to remain independent in their homes for longer.

No matter what your age, if you live by yourself or have a health condition, a medical alarm could offer you and your family the reassurance you need.

St John offers an extensive range of medical alarm systems. Some have special features or can operate without the need for a home landline. Be sure to mention any special requirements when you contact us.

For more information on a St John Medical Alarm, see your doctor or contact us: phone 0800 50 23 23, www.stjohnmedicalalarms.org.nz, email enquiries@stjohn.org.nz.

Stay safe, keep well.

You too can be part of Coromandel/Colville Team. For more enquiries call the station and talk to the duty officer or leave a message (07) 866 8279



Everyone knows the best place to go fishing is near a mussel farm. Please follow these guidelines to keep everyone safe.

- Keep 30 meters** from working mussel barges at all times
- Don't tie-up** to a line being worked on
- Never cast your line** towards a mussel barge – farmers have been injured from flying hooks and sinkers
- No Anchors.** Tie-on to a longline buoy or use approved mooring hooks
- Minimise your speed** and wake
- Never drive across the lines**



www.coromf.co.nz

Mana Update

By Jade Ferrière

Who would have thought a pot-holed driveway would have us tuning into the greater lesson of impermanence? Every year our working bee team dedicate hours of labour to patching up the pot holes on the Mana driveway. It has become tradition and one that brings together a boisterous team of go-get-em personalities to tend to the ever evolving maintenance needs of our asphalt road.

No matter our efforts, the driveway continues to age and every year there are more and more potholes to be patched. After 30 years, we think it may be time to replace it all together. It is a reminder that the only constant thing is change...

The concept of impermanence can be tricky to comprehend, but it is not to be feared, it is actually a gift. It allows everything to be recycled and renewed, and when the going gets rough, it is reassuring to know that this too will pass.

It is natural to have resistance to change, especially when we invest so much time, energy and money into cultivating a certain state of being. Whether it is our health, wealth or lifestyle; the relationships we care so much for; the process of aging; illness, hurt and sorrow; or an old driveway that is has seen its last days, everything comes, everything goes.

The more we awaken to this awareness the more graciously we can meet change.

So we are opening to the possibility of a new driveway, and the magnitude of such a project. We are welcoming the new, giving thanks to the old, and choosing to find joy in the process. After all that is all you can really do when it comes to change.

By the way, the garden is filling with fresh tomatoes so we have been bottling a delicious relish to preserve the yumminess for the months ahead – it is super simple – take 2kg ripe tomatoes, cored and chopped (you don't need to peel them), 2 large onions, chopped, 1 tbsp salt, 1 tbsp curry powder, 1 tbsp mustard powder, 1 tsp chilli flakes (optional), 1 cup white wine or malt vinegar, 1 cup sugar. Prepare tomatoes and onions, sprinkle with salt and leave to rest for 4-12 hours before draining excess liquid. Put all of the ingredients, minus sugar, into a heavy-bottomed pot and bring to the boil for 20-30 minutes. As the mixture becomes thicker add the sugar and continue to boil down for another 20-30 minutes, stirring regularly to avoid sticking on the bottom. Bottle into sterilised jars with seal lids and label with the date. ENJOY!

Coromandel Budget Advisory Service

By Brooke Redman

Small Goals = Big Rewards

New Year's Resolutions aren't my thing but making a small commitment – at any time of year – can make a huge difference to your physical, mental or financial health, depending on your goals. A resolution shouldn't be a large over-arching life plan, but instead a small, achievable step in your journey.

If your aim is to free yourself from debt, a small commitment such as limiting takeaways or packing a lunch for yourself is the beginning of a sustainable lifestyle change. Make your goal and prepare for it. Plan and shop ahead for your menu. Give yourself an achievable timeframe and when you succeed, you'll be motivated for your next challenge, and know that you will surmount all obstacles because you've set yourself realistic targets.

There's help available here at the Coromandel Budget Advisory Service, located at Tiki House opposite the BP or call us on (07) 866 8351.

Budget Advice

Budget advisors available Monday to Thursday. Please call to make an appointment on (07) 866 8351.

Foodbank

If you require a food parcel please make sure requests are with us before 12.30pm on a Tuesday otherwise you will have to wait until the following week. Pickup time is 2.30pm on Wednesday. You will need to book in with a Budget Advisor if you are going to need assistance over a couple of weeks.

Community Garden

If you would like to help out at the Community Garden, please come on down on Wednesday between 9am-11am and have a chat with Brooke. If you are dropping produce off at the sharing shelf please pop it up on our Facebook page.

The community garden appreciates donations of seeds or excess seedlings to keep our plot producing. Any mulching material is also gratefully received. Just drop off to the garden, located next to Hauraki House, or send us a message to organise a pickup.

Coromandel Contract Bridge Club

By Judy Bronlund

It is good to be back playing bridge. The February – March competition is Cashmore Pairs, with the Whangapoua Pairs starting in March as well.

We play each Monday evening at the St John rooms; visitors and new members are welcome to join us. If you would like to learn or have a refresher course, please contact Val.

Contacts Val (07) 866 8739 or Lyn (07) 866 8858

**retreats
workshops
events**



Mana Retreat Centre, Coromandel New Zealand

Book Online - manaretreat.com

1-3 MAR	Relax Weekend @ Mana
7-10 MAR	NZ Spirit Team - Culture, Community and Collective w/ Franko Heke and Nikki Rhodes
16-21 MAR	Private Event w/ Ann Mortifee
22 MAR - 1 APR	Biodynamic Osteopathy Training w/ Robyn Seamer & Manuela Da Rin
3-10 APR	Iyenga Yoga w/ Glenn Ceresoli, Keri Keri Yoga Centre



SCOTT REVELL

BUILDING CONTRACTOR

- New Homes
- Renovations
- Additions \ Repairs
- Bathrooms
- Decks \ Fences \ Landscaping

Prompt Professional Service
srevell2010@hotmail.co.nz
027 861 6592
COROMANDEL

JAMES DRAINAGE LTD

WWW.JAMESDRAINAGE.CO.NZ

Excavators | Tip Trucks | Bobcats | Auger & Chain digger hire
 Skip Bins | STMS Services | Septic Tank Services | Portaloo Hire

1020 Tiki Road, Coromandel
p. (07) 866 8308
e. jamesdrainage@xtra.co.nz

Museum News

By Raewyn McKinney

On Waitangi Day we held our annual "Free Entry" Day at the museum.

It was good to see lots of people come along and take advantage of this special offer.

Every person who has just visited the museum for the first time, or has revisited after some years, is full of praise and surprise at what is held in the museum and the changes that have taken place.

So, if you haven't been for a while, come along while we are still on our summer hours.

This month I thought I would remind everyone that crime is not a new invention.

From the "New Zealand Herald" 5 March 1870:

"COROMANDEL – ROBBERIES

3 March. The Thames Advertiser's correspondent writes as follows: More robberies have been committed during the past few weeks than have been perpetrated within any given time during the last five months, and it almost seems that the depredators have become emboldened by his Honor's disinclination to afford additional security. Last Friday night some scoundrels – who added a love of mischief to their lust of plunder – entered Mr. King's machine-house and tore up the copper plates and carried them away. It has rendered the machine utterly useless for the present, and the value of the plates as plunder bears no proportion to their value in the machine. What makes this barefaced robbery the more mischievous is the fact that two tons of stone from the Puketutu claim were to have been brought down to-day to have been crushed, and the Alpha and Omega have also a large quantity ready for the machine. There was a little prospect obtained at this claim yesterday, and the stuff is expected to turn out well. Another impudent robbery was perpetrated at Mr. Moore's stores on Saturday, when the robbers carried off a tent which was standing close to the end of the store, which had been unoccupied for a few days. On Tuesday night some thieves entered a little garden owned by a hard-working man known by the name of 'Bob', and deliberately dug up about a hundredweight of potatoes. The footsteps were traced some distance, but eventually lost in the scrub."

The museum is open from 1pm to 4pm daily throughout March



Mō tātou o Hauraki

Affordable medical & wellness services for everyone in our community

Melanoma March Month

Protect your skin against sunburn and see your GP if you find a suspicious mole. Melanoma can be treated if caught early.

- * Over 300 Kiwis die of melanoma every year
- * *Maori and Pacific people may have a lower chance of getting melanoma, but they often have thicker, more serious melanomas*
- * New Zealand's melanoma incidence rate is the highest in the world

Source: www.melanoma.org.nz/research/resources/

Clinic Fees *

GP	NP
Under 18s - FREE	Under 18s - FREE
18-65 years - \$17.50	18-65 years - \$15.00
65 + years - \$10.00	65 + years - \$10.00
FREE	NURSE
Under-25s sexual health checks	Under 18s - FREE
	18 + years - \$10.00

*clinic fees for enrolled patients

OPEN: Mon - Fri:

8.30am - 5pm

Kaiwhakaora: Māori Healer

Jim Kingi

Foot Clinic: Ruth Wells

every 2nd Tues - Mar 7, 21, Apr 4



225 Kapanga Road, Coromandel 3506

Ph (inc a/h): 07 866 8084

Email: coromandel@korowai.co.nz

www.korowai.co.nz

COROMANDEL PLUMBING

(1986) LTD

1490 Tiki Road, Coromandel

CRAIG DUDSON

Phone/Fax 866 8814

027 482 1291



Plumbing, Drainlaying and Gasfitting

PENINSULA ELECTRICAL SERVICES LTD

Commercial & Domestic Electrical Contractors



RAVINDER & SUE RAJ

Registered Electrical Inspector

1750 S/H 25

P.O. Box 109

Coromandel

Telephone (07) 866 8166

Fax (07) 866 8162

Mobile (0274) 738 734

Free Phone: 0800 4 Electrical (0800 435 328)

E-mail: ravinder@e3.net.nz

Rangatahi

CELEBRATING OUR CHILDREN

Coromandel Area School

By Jamie Leckie

Coromandel Area School

Welcome back everyone. What a great start to Term 1 it has been full of swimming, sports and getting to know each other...we are ready for an EPIC year!

Treemendous

We did it! We won it! Whoop whoop! We are one of five schools nationwide to receive \$10,000 from Treemendous towards developing an outdoor classroom space for our tamariki at Coromandel Area School (CAS)!

These are exciting times ahead for us all as we start planning what this will look like, including: the restoration of our stream, native tree planting, creating walkways, making hands-on teaching and learning spaces, developing native bird corridors and healthy habitats for fish and insects to thrive, thus creating a vibrant space for our children to learn and grow!

We are super excited to work with our students, staff and community to establish something very special for us all to benefit from.

We need you! We are putting a call out for help! We have booked in the week of **4-6 March** to run a working bee in preparation for the big day. We will be weeding, developing access ways and much more, while having a whole lot of fun in the process.

On **Friday 22 March** Ruud Kleinpaste the "Bugman", an ambassador for the project who takes environmental education to the next level at Treemendous events, will bring his insect friends along and teach our tamariki about New Zealand's native bugs, and the importance of looking after the environment. The following day, **Saturday 23 March** at 8.30am, the Treemendous team will be here to kick off the big day and to help us plant hundreds of trees. We expect to finish at lunchtime and will supply a delicious BBQ for all of our helpers! You do not want to miss out. It's going to be a corker, and history in the making!

Please contact Koren on k_hopoi@coroarea.school.nz or Charlotte on c_pearsall@coroarea.school.nz to let us know how you can help. We look forward to working together.

Coromandel Youth Group at Hauraki House

Term One Opening Hours: Sunday 1-4pm, Tuesday, Thursday and Friday 3-5pm*, Friday Night Social (for years 6-9*) 6.30-9pm*.

All children must be signed in with a staff member on arrival.

Coromandel Youth Group is for all children aged 5-15yrs; just fill out a membership form for each child attending. To help with running costs please make a gold coin donation, every little bit helps us to stay open! For more information call in at the Youth Rooms, Hauraki House or telephone us on (07) 866 7061.

*Please note time and year/age changes to Friday sessions.

Along with the kind donations received, thank you to those who make Youth Group possible: Lottery Waikato, COGS, Trust Waikato, Coromandel "Bizarre" Charitable Trust, The Tindal Foundation and The Warehouse Thames "Customer Choice" programme

COROMANDEL
AREA SCHOOL



Room 5 writing

I see the tiny birds flying through the bright blue sky
I smell the juicy pavlova sitting there waiting for me to gobble it down
I taste the delicious ice-cream melting down my sticky hot hand
I hear the noisy kids splashing in the salty water
I touch the cold water jumping off into the sea
I feel my sweaty body burning in the deathly sun
Holidays to me are swimming all day and hanging with my friends.

– By Mackenzie

I see the new motorbike speeding along the muddy track
I smell the tasty gas teasing my nose
I taste the burning dust flying into my helmet
I hear the noisy motor roaring as I kick into life
I touch the changing gears racing as I go faster and faster
I feel the easy clutch pulling into my powerful fingers
Holidays to me are racing around happily on my motorbike.

– By Cody

That is all for now, we hope to see you at the Treemendous working bee.

Kiwi Can

Kia Ora Koutou,

Our Kiwi Can lessons have started with a hiss and a roar. It's so great to be back with our tamariki.

This term our theme is Positive Relationships (Whakawhanaungatanga). This is always a great theme to start the year with as a lot of our tamariki are starting the year in new classes and will be fostering and starting new friendships and relationships within their new classroom. We know that positive relationships mean working and playing in safe and thoughtful ways with others. We are developing this theme through our sub modules of positive communication, co-operation, and friendship.

Our catchphrase for this term is: Recipe for a Positive Relationship – 1. Take a dollop of friendship, 2. Add some active listening, 3. Stir in some good conversation, 4. Bake for as long as you can.

So far we have been discussing friendships and thinking about the qualities we look for in a friend, being able to give and accept compliments and discovering that it is important to support others rather than judge them. Ask your child what qualities do they have that make them a good friend and what qualities do they look for when making new friends.

Until next time take care from the Kiwi Can Team.



Te Rerenga School

Learning, it's what we do...

By Anna Yates

The first couple of weeks are off to a great start at Te Rerenga with enthusiastic, happy children who have been eager to come back after their sunshine-filled holidays.

We have lots of exciting plans for the year including a school musical, involvement in developing some local wetlands, upcoming crosscountry swim sports, art projects and leadership development for our year 7/8, lots of opportunities with Tuia Matauranga commemorations and I'm sure there will be many more!

In-the-classroom learning is underway and our teachers are learning all about our new children and refreshing goals for those who were in the class last year. We have had Rosie A, Rosie T, Aoife, Eve and Lola join us as new entrants, with many more due to start during the year. This year we welcome Miss Beaver to work with our year 6 learners each Friday and Ms Mary Kedzlie who returns as Acting Principal two days a week.



MASSAGE THERAPY COROMANDEL



- ★ Deep Tissue Remedial Bodywork
- ★ Relaxation / Swedish massage
- ★ Lymphatic Drainage
- ★ Hot Stones Massage

Lynley Ogilvie, RMT.

Call for an appointment: (07) 8668684 or 021 866868

Arts

Barry Brickell Play with Clay Day

By Pete Sephton

The late Barry Brickell was once again honoured in the Play with Clay Day held in the grounds of Hauraki House on Anniversary weekend. Over the course of five hours on Saturday an estimated 250 adults and children took advantage of being able to spend time with expert craftspeople to experience the joy of working with beautiful DCR clay. Local potters Sam Ireland, Petra Meyboden, Cindy Alger, Bev Thatcher and Tim Fuller, along with visiting potters Fiona Tunncliffe, Janet Smith and Maureen Alison, were on hand to give instruction to budding potters on the use of a wheel to throw pots or handbuilding on a table. Glenys Chadderton demonstrated the ancient craft of wool spinning and a popular new participant was Graham Judd who brought a small hand operated letter press from Auckland. People were able to use the press to print small items such as bookmarks and notebook covers. Samoan artist Fatu Feu'u painted for us last year but this time decided to work with clay.

This year we had the added attraction of live music on The Barry Brickell Memorial Stage. Mac Pakinga kept everyone entertained with his classic guitar style in the morning and in the afternoon Soul Sax Plus played soul and jazz in the sunshine. The music was perfect for the laid-back nature of the day.

This is a free annual event and could not happen without the time given freely by the artists and craftspeople as well as all the other

helpers, Tom and Wailin Elliot, Lindsay Garmson and partner Marie, Annette Kaye and Mary Lee. It also would not be possible without the generous grants from Creative Coromandel and Harcourts Real Estate, and through donations of equipment by The Spirit of Coromandel Trust, Driving Creek Railway and Potteries, Coromandel Arts Council and Kay Ogilvie.

A heartfelt thank you to all the people who made this such a successful and fun-filled event.



Hauraki House Gallery News

By Kim Brett

I have to say a big thank you to all of the people that have contributed to the running of Hauraki House Gallery over this summer. You have all done a great job of showcasing Coromandel Town and promoting its diverse group of artists. We have had a full and busy time here at the Gallery with over 3500 people coming through the doors to view lots of colorful, bright, creative work.

Don't forget the Gallery is available for hire, for exhibitions, workshops and meetings. It has toilets and a kitchen for catering and is a nice, quiet, relaxed venue. Please just give Loes a call on (07) 866 8053 if you need more information or would like to make a booking.

We have the annual Easter Exhibition coming up with many well known artists showing their most recent works. Also the "Watch This Space" group will be having an exhibition in May. Then after that starting their creative workshops, for information on this please contact John on 021 930 470.



The Christmas exhibition

JAMES & TURNER

KITCHENWARE · PAINT

HARDWARE · GIFTWARE

FISHING · CAMPING

MARINE · GARDENING

PLUMBING · ELECTRICAL

James & Turner 2014 Ltd
131 Kapanga Road
P.O. Box 16
Coromandel Town

Grant Webber
Ph: 07 866 8805
info@jamesandturner.co.nz
[f](#) search "James & Turner"



Driving Creek JewelleryART Studio

30 Driving Creek Road, Coromandel Town
 STUDIO OPEN Thursday to Monday 10am-4pm

Julie Pijfers Jeweller Tel 021 157 0040 www.jewelleryart.co.nz

Arts

Open Studios Coromandel Artstour

By Kaye Anderson



“Recall” – an exhibition by artist Diann Cade, at Hauraki House 8-17 February
Diann says the impetus of the exhibition was to look back in order to look forward. “I used to do tight pencil drawings, a result of my work as an industrial designer. I took up painting to lose edges. Now I have come back to my drawing skills, but I’m sketching with a paintbrush.” You can see this in the photo of her painting of tulips.

Diann develops her work with meticulous attention to form, composition and colour. The pages of her sketchbooks and the pre-paintings on brown paper are testament to her thoughtful process. If you missed the exhibition, you can still go and see for yourself at Diann’s studio in Top Town, 22 Colville Road.

You can be certain that Diann will be happy to talk about her journey from pencil to brush.



Interviews with Artstour participants Sally Tennent-Brown

A highly creative artist who continually explores new ways of expressing her thoughts, ideas and feelings, Sally Tennent-Brown has become passionate over the past few years about curating exhibitions.

In May Sally will co-curate an exhibition at Hauraki House with John Eaglen. The theme is already set: Ask where I’m a local, taken from a TED Talk given by Taiye Selasi entitled “Don’t ask where I’m from, ask where I’m a local.” John and Sally choose their themes deliberately, “hoping to make us all work a little, considering, thinking and working our way into a theme, finding a place that we each resonate with and which might challenge our current way of working.”

Alongside this passion Sally has a key role in planning and organising the Shared Studios winter programme, where artists can work together in the Art Room at Hauraki House and workshops on different aspects of artistic endeavour will be offered. She is also working on getting her studio Tabby, in Rings Road, up and functioning fully as a place to showcase and market her work. Here you can find tiny portraits, large works which combine paint, tissue paper and

fabric into vibrant, sensuous images, and jewellery created from the unexpected.

Sally confesses she has become an avid collector of recycled objects and that these are likely to be central to some pieces of art in the future.

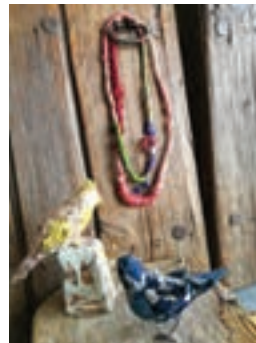
Robyn Lewis

“I pull together beautiful objects ... making something out of nothing, dirt from the ground, wool from the sheep, recycled steel, things I search out on my travels.”

The results are as cheeky and charming as they are diverse. Ceramic birds, felted shawls, clothing made with plant-dyed fabrics, silver jewellery, sculpted platters. Her work celebrates the Japanese philosophy of Wabi-Sabi, a philosophy which embraces imperfection and finds beauty in what’s natural, warts and all. It respects age and the marks of time, wrinkles in the skin and cracks in the teapot. Robyn recycles materials and follows Japanese boro, a tradition of fabric dyed with indigo and mended many, many times. This custom came from the practice of peasants who stitched their old worn-out clothes with patch on patch to make them last longer, and thus exemplifies Wabi-Sabi. The “blue” bird in the photo is made from such fabric.

“I’m a maker,” she says. “I’m hands on, more interested and involved in process than in concept.” Collected treasures are brought together to make things colourful, quirky and quite probably wearable. Check them out at The Source.

For more information check out our website at www.coromandelartstour.co.nz



BUILDING CENTRE

**COROMANDEL TIMBER
PH: 866 8848**

“We’ll see you right”

• SALES - SERVICE - REPAIRS OF SMALL ENGINE EQUIPMENT • ROTARY HOES • LOG SPLITTERS • RIDE ON MOWERS • CONCRETE CUTTERS • WATER BLASTERS • BLOWER VACS • MOWERS • HEDGE TRIMMERS • WATER PUMPS • GENERATORS • AUX OUTBOARDS • MINI BIKES

PHONE OR TEXT... SERVICE 021 0238 0347

COASTAL SMALL ENGINE SERVICES

TRADE CERTIFIED

SALES – SERVICE – REPAIR OF SMALL ENGINE EQUIPMENT

FREE PICK UP AND DELIVERY TO COROMANDEL TOWN

165 Wharf Road, Coromandel Town

SERVICING COROMANDEL PENINSULA

• CHAINSAWS • MOWERS • CHAIN SHARPENS / CHAIN SUPPLY • NGK PLUGS • WEEDEATERS

SUBDIVIDING THREE GREAT REASONS TO CALL US NOW

- ① We guarantee all our work - we'll get it right first time.
- ② We get your titles on time and on budget so there is no stress on you!
- ③ We project manage the entire process including resource consents, specialist reports such as geotechnical and traffic, Council requirements and construction. Relax - it's all taken care of!

Ask us if you qualify for our money back plan

0800 268 632

**Surveying
Services**

WAIKATO • THAMES/COROMANDEL • BAY OF PLENTY

www.surveyingservices.co.nz info@surveyingservices.co.nz

10 days of art in March

The Mercury Bay Art Escape is on **1-10 March**, from Tairua to Opito Bay. Enjoy the free and popular self-drive art studios tour during the first two weekends in March (**2-3 and 9-10 March**, 10am to 4pm); help Chris Charteris make a sculpture (**3 March**); take part in a full range of art workshops (**4-8 March**); marvel at the new Street Art Festival (**4-8 March**); and attend the Summer Showcase Concert by the Whitianga Music Club (**Friday 8 March**).

Ten days of art is launched at the official opening on **Friday 1 March**, 6pm, at the Hot Waves Café, Hot Water Beach. The night features guest speaker renowned artist Fatu Feu'u ONZM and an exclusive preview of the Mercury Bay Art Escape artists showcase exhibition. Be quick to book tickets online to this art-filled evening.

The Open Studios weekends showcase

36 member artists and three art groups. Encounter woodworking, pottery, sculpture, harakeke weaving, glasswork, mosaics, jewellery, painting, photography and printmaking. Check the free 2019 art guide and the website for the latest updates.

In addition to the studio visits another popular event is the chance to work alongside established local sculptor Chris Charteris on **Sunday 3 March** at the Kuaotunu Town Hall. This year Chris, with public help, will be creating a massive mandala-like indoor sculpture out of 1000s of nga tipa (scallop shells).

The midweek programme **4-8 March** includes a Street Art Festival in Whitianga organised by Mercury Bay Art Escape to highlight the national Tuia – Encounters 250 commemorations. Te Whanganui a Hei (Mercury Bay) has great seafaring significance. This is where the great navigator Kupe

visited many centuries ago and in 1769 was one of four landing sites for Cook's ship The Endeavour. The festival will feature internationally recognised street artists Flox, TrustMe and Charles and Janine Williams. Alongside local artists, Mercury Bay Art Escape patron Michael Smither, Monique Rush, Anne Bowden, Peter Nicholson, Dave Fowell and popular street artists from The Coromandel and Hamilton.

This exciting free event will allow visitors to watch 12 new murals painted on walls in the Whitianga central business area.

Also participate in a range of Art Workshops **4-8 March**. These fun workshops are for all levels and include photography, flax weaving, painting, mixed media and printmaking. You will be tutored by Mercury Bay Art Escape artists and invited tutors.

To find out everything visit www.mercurybayartescape.com

Coromandel Art Group

By Barbara Peddie

The judges for the Coromandel Art Exhibition for 2019 said it was definitely not an easy decision coming up with the top five paintings from the 80+ that the artists of the Coromandel Art Group had entered.

Caro Reid of Harcourts Coromandel said Jocelyn Strongman, John Gaffikin-Cowan and herself had chosen their own favourites first, then joined up to "negotiate" the group decision – "it was surprising how similar to each other our picks were. We thought the standard of the paintings was exceptional and we could all see how individuals continue to keep improving. An example of that would have to be Barbara Peddie who came first with one of her "Abandoned" series. We were all blown away with the quality of her paintings."

Second was Lindsay Nicholls's "Storm at Sea", and third was Wendy Moore's "Night Owls". There were two highly commended, Val Gray's "The Fisherman's Shack" and Gill Bacchus's "Driving Creek".



The three judges with Barbara's painting

Coromandel Players news

Coro/Colville Kids Theatre Performance

We talked about it, researched a suitable "first play" and found a great performance option for our talented kids, "The Great Piratical Rambustification" by Tim Bray, adapted from a Margaret Mahy story. It has seventeen short scenes, opportunity to include extra kids with more pirates and also a separate choir for the songs (and a few more pirate shanties before the show). We are aiming for a performance at Colville (Easter but not yet confirmed) and two in Coromandel Theatre the following week.

We would like to hold most rehearsals at Papa Aroha fire station (permission being sought) so that both Coromandel and Colville kids have the same distance to travel.

If you would like to help – working with the kids, costumes, music, lighting, sets, please give us a call: Bronnie Kenchington 027 459 2516, Barry Ross 021 0858 4243

Coromandel Christmas Exhibition, 2018-19

By Lindsay Garmson

It was a near record year for the sales at the 30th exhibition held at Hauraki House.

I would like to thank the sponsors, Stephen Larsen House Removals and Contractors and Damian and Renee Langley of Coromandel Four Square. Also, I would like to thank the help given by the staff from James and Turner. Thank you to all the incredibly talented artists who make this occasion a successful yearly event.

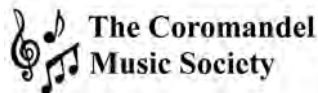
This year's gift basket raffle was won by Wendy Moore of Coromandel. The wooden board and jewellery, donated by Kim and Kevin Brett, was won by Jean Copland of Wellington. The raffle proceeds were donated to the Colville Heath & Wellness Project along with a cash donation from the exhibition sales.

I have secured new artists to exhibit in this year's 31st Coromandel Christmas Art Exhibition beginning on Sunday 15 December.

Auckland potter Bronwynne Cornish with TCDC Mayor Sandra Goudie opening the exhibition



Coromandel Music Society



Following our very successful January concert at our new summer venue in the Admirals Arms Garden, the Music Society is delighted to promote three more outdoor concerts – the one in February featured Soul Sax Plus (which you will already have enjoyed when reading this column). The Sapphires duo will perform on **Saturday 9 March** with songs from Tom Jones and Englebert Humperdink's 1960 era then through to the artists of 70s, 80s and 90s. **Saturday 23 March** features Paul and Karen from the UK/Germany who engage their audience with a wide range of beautifully written songs and a choice of folk favourites. Tickets are \$20 and available from the Coromandel Town Information Centre or doors – if it rains the shows will transfer to the Club in Woollams Avenue.

Our committee again thank the community for the continuing support over the many years that the Society has been promoting live music. We are holding our Annual General Meeting on **Friday 15 March** at 3pm in the Club, and you are welcome to come along with your comments and ideas for our future presentations.

Environment

Forest & Bird

By Alison Carter



Forest & Bird
GIVING NATURE A VOICE

The Forest &

Bird committee was extremely inspired this month by a new publication entitled *Protecting The Biodiversity of The Hauraki Coromandel*, which is a summary of research into Community Conservation Groups. The Predator Free Hauraki Coromandel Community Trust commissioned the report. It was funded by Trust Waikato and the research was undertaken by the Coromandel based research scientist Dr. Kate James.

The Predator Free Hauraki Coromandel Community Trust was established in 2017 to support and promote community conservation groups in the Hauraki Coromandel within a national Predator Free programme.

The Trust's starting point when initiating this research was "to identify the community conservation groups currently in action in the Hauraki Coromandel; to understand the scale of work undertaken; to determine the needs of the groups; to get a sense of the desire for the groups to work together and the role the Trust might play in facilitating this".

The Research Summary is an attractively presented publication illustrated with amazing photographs of the wildlife and their landscapes provided by local photographers. It is well laid out, easy to read, providing an easily absorbed snapshot of Hauraki

Coromandel which shows that currently community conservation groups in the Hauraki Coromandel region are carrying

out predator control across more than 29,800 ha of land. Looking at the map it is heartening to see the areas that show the scale and scope of group activities, but equally disheartening to see the large swathes of forest still requiring protection.

The research shows that projects are often initiated due the presence of rare or especially valued species with 81% of projects protecting native species that are classified as Threatened or At Risk including at least: 20 bird species, 8 frog and lizard species, 5 freshwater fish species, 4 freshwater invertebrate species, 14 plant species.

Ninety percent of the land area with predator control protects kiwi.

The Research study points out the percentages of different predator control methods used and the methodology of monitoring results.

A total of 57 community conservation groups are represented in the study, which shows that throughout the region there are more than 600 people working to contribute to predator control projects. Most people carry out a variety of conservation tasks as well as predator control such as weed control, native revegetation/planting work, community education and walkways or tracks.

Many of the conservation groups are driven by a few key passionate people. The largest challenge they face is that of financial deficiencies, being under resourced and having to access what is often short-term insecure funding from multiple sources. Many of them would like to expand but they are already doing as much as they can with the resources available.

However, despite the challenges, 97% of the groups gave overwhelmingly positive responses around connecting predator control efforts to enhance biodiversity gains.

As Aotearoa/New Zealand moves towards its goal to become predator free, this study provides a useful resource in showing what support is needed for conservation groups to link and expand their effort. It focuses on areas like growing the funding base, increasing the pool of volunteers, providing practical local resources and help with monitoring.

If you want to look at the study there is a copy is at the Information Centre, the local Council office and at the CILT office.

For those who may want a fuller picture, the full research document by Dr. Kate James is entitled *Community Conservation Groups in the Hauraki Coromandel Region*. To obtain a copy please contact the Predator Free Hauraki Coromandel Community Trust at info@pfhc.nz

McGregor Bay Wetlands

By Carol Sutherland

Monitoring Report

Vanessa Wood has been monitoring the McGregor Bay Wetland for the past year. As a professional ecologist she was contracted to conduct a baseline study so that we have a measure of what is in there and of the overall health of the wetland. The resulting peer reviewed McGregor Bay Wetland Monitoring Report is now complete. The report is important to guide us into the future and we thank Vanessa for this work. The report was finished as International Wetland Day swung around again. Organisations and politicians around the world were highlighting the importance of healthy wetlands to the point some countries are re-establishing estuarine wetlands to count towards their carbon reduction measures. Such measures are much quicker and easier than tree planting.

So where is the small McGregor Bay Wetland in all of this?

Using the WETMAK (Wetland Monitoring Assessment Kit) Warrant of Fitness the report identified a relatively high level of pressure on the site from the surrounding catchment. Interesting to note was that the small section that is in private hands appears to be in greater condition due to more standing water over the wetland. The area managed by the TCDC with drainage ditches and spill is of a lesser standard. Not a good report card for a Scenic Reserve.

It comes back to the need for the wetland to be wet.

As the report outlines: "By allowing tidal water to flow directly over a larger portion of the wetland rather than remain in the drains, together with modification or removal of the floodgate, maximum saturation of the wetland can be achieved. By increasing the amount of tidal water that enters the wetland, as well as the amount of time the water sits on the area, natural regeneration of wetland and saltmarsh species is also possible."

We have a benchmark and now the future can be monitored, so will we see deterioration or improvement? So we hope the TCDC looks the report and investigates hydrology issues to improve this poor rating. This little public wetland needs some TLC and it could also give them some serious carbon credits if it is treated nicely.

Moehau Environment Group

Weed of the Month – Tree Privet

Tree Privet is a very common pest plant in NZ. Rated as one of the "Seven Most Sneeziest Plants" on a recent stuff.co.nz article, it is not only a pest to our native forests but to us humans too. Tree Privet is tree shaped, grows to about 15m high, has dark green glossy leaves and is easily recognisable by lumpy "warts" on its stems. It's currently flowering (Nov-March) with tiny creamy flowers, followed by small purplish/black berry-like fruit with a powdery "bloom". Check out of window display at Liquor King Coromandel or www.weedbusters.org.nz for more information on how to eradicate this plant from your property.

Coromandel Kiwi Project – Shared Meal

The CKP volunteers and MEG committee members had a lovely evening celebrating another year of the Coromandel Kiwi Project at project leader, Raine's, house last month. It wasn't all about food and banter. Raine had set out catch data for the project, gave a report on the recent audit and had a wee "tool" for everyone to add to their trapping kit... If you'd like to become a MEG volunteer then drop us a line, info@meg.org.nz. You don't necessarily have to be out roaming the ranges to be part of the team...

Weta Motels

One of the popular activities we ran at Driving Creek Railway Sanctuary, as part of our Summer Holiday Programme, was "Build a Weta Motel". It ended up being very popular with a large number of children turning up to make their creations. There were enough resources leftover for the kids to make some extra "motels" to put around the sanctuary. While visiting there recently we had the chance to check the motels for "guests" and to our delight almost all had inhabitants! Did you know that weta are at risk from rats, stoats, cats and hedgehogs? Google "Toyota Guardians Weta Motel" for an instructional video if you want to make one.



Sport

Coromandel Recreational Fishing Club

By Allison and the Committee CRFC

How's the fishing been going? The great weather we have been having has been great for fishing, although I must say it's been a bit patchy to say the least. We went out on the weekend and I have never seen so many really little snapper being brought in; quite frustrating. We had some heavy showers last night and it's very windy in Coro today.

The Club held the Anniversary Competition on 27 January. Fishing was a bit hard but some good catches were had especially by Margaret-Ann Visser who caught the Biggest Snapper, weighing 9.910kgs (22lb sounds better) a beaut fish.

Results of the competition:

SENIORS:

H/Snapper: 1st – 9.910kg Margaret-Ann Visser; 2nd – 5.533kg Mark Read; 3rd – 3.970kg Rope Masters
Kahawai: 1.762kg Margaret-Ann Visser
Trevally: 1.660kg Rex Brown
John Dory: 0.899kg Bronson Sammut

Kingfish: 7.452kg Alan McNeil

JUNIORS:

H/Snapper: 1st – 2.660kg Layke McNeil; 2nd – 1.204kg Sam Woodcock; 3rd – 1.145kg Lexi Prendergast.
Kahawai: 1.060kg Chelsey McNeil
Trevally: 0.386kg Brook James
MYSTERY: Gary Woodcock 2.820kg (closest to chosen weight of 3.411kg)
AVERAGE: 1.340KG Ty Visser

Didn't the newly married couple Ty Visser and Margaret-Ann Visser do well. Our best wishes to them.

Margaret-Ann Visser also won the Clubs Heaviest Fish for the month wining \$100.

The Club's Fish of the Month for February is kingfish; members only.

The kingfish are cruising around, by all sources a lot in the mussel farms (watch the ropes if you do hook on one).

Competition

Classy Chicks has been moved to **9 March**.

You can get your entry form from Wyuna Studio or Fish & Dive or email: coromandelfishingclub@gmail.com and one



will be sent to you.

This is the Clubs' biggest competition of the year and will be the 15th year it has been held by the Club. Great prizes to be had by all.

Here's to tight lines as always – see you all at the "Classy Chicks".

Coromandel Golf Club

By Lynne Fenwick

The logging trucks that you may have seen turning off Hauraki Road and lumbering up to the intersection at the BNZ to make a careful turn, are coming from the Coromandel Golf Club.

Our Pine Plantation: Back in late 1990's, one of the club members at that time donated pine trees, time and labour and planted a plantation of trees for the future of the Club. A considerable amount of pine plantations were planted around this time in Coromandel.

Back then, as is the case today, work on the Golf Club was mainly undertaken by the members of the club. Sheep grazed the fairways, the greens were fenced and electrified and the excess land that the club had was yet another thing to maintain and worry about. Pine trees were income and this generous offer was gratefully accepted.

Today, Coromandel Golf Club have 48 hectares of land in total with 16 hectares of playing course, 16 in grazing stock and 16 in pines and regenerating native forest. We play on a fantastic course, with a great clubhouse, and the existing members make newcomers feel very welcome. This from personal recent experience.

Our Club and course are still run by volunteers, our members, many who hold down fulltime employment, but we all work for the love of this game called golf and make many friends along the way.

Most members take a turn on the committee at some stage, some play exceptional golf and have their names on the big wooden boards set high on the walls in the club house. Coromandel family names and several generations of.

This will all be a familiar story to those reading this article, as most of you will already belong to a club like this in Coromandel, or several I suspect.

But back to the pine trees. In four to six weeks the trees will all be felled and the clean-up will begin, again by our members. Our new season will have started and we look forward to new members joining us. Are you one of these people?

We have a variety of membership options, from a fulltime playing member to a social member. We have sets of golf clubs available for you to use and members happy to help you get started. Early morning or late afternoon are a perfect time to be out enjoying the fresh air and golf is great exercise and in a recent article I read, can use up to 800 to 900 calories for a 9h-ole game. For some new members it will be about the competition, for some the company, for some just a bit of fun.

If you are interested, you would fit into one of the categories and we would make you feel very welcome. If you know one of our current members, have a chat with them, or phone me on 021 079 9349.

See you on the golf course.



Coromandel Croquet Club

By Kaye Anderson

A passing shower won't stop this seasoned player from continuing her turn by putting her ball through the hoop. Although it's been sunhats and sunscreen and a challenge to complete games before the heat of the day becomes unbearable, the first Tuesday in February began otherwise. But the hardy players donned their rain jackets and carried on.

We are currently meeting at 8.45am to begin play at 9.00am, both Tuesdays and Fridays.

If you are keen to join us and need more information, call Kaye on (07) 866 8968. Otherwise just come along on Friday at 8.45am. The club is situated in Woollams Ave next to the Bowling Club



COROMANDEL.N.Z

866 8635

See meeting list for class times

Classifieds

Classifieds cost 30 cents per word – please email your words to corochronicle@gmail.com or call/txt Debbie on 021 235 6648.

PROFESSIONALS

A LOCAL HANDYMAN Doug Marsters for all types of maintenance jobs including Gib Fixing and Plastering, Ornate Cornice, Archers and Ceilings new and old. Over 20 years' experience. Ph 022 019 9255 or 022 019 9133 free quotes.

A- Z COROMANDEL THERAPIES 021 20 19 750. Get better! Therapeutic & recreational KaHuna Hawaiian Massage & Bodywork with Tina. Local Special \$1/min. TENS Pain Management, Earthing, EMF Protection & advise on the handling of wireless technology. Body Balance & Yoga Class Thu 5.10- 6.20pm @ the hall above the pool in town. Exercises for pain relief, relax & fun. All welcome! Private coaching. Mobile services for people with limited mobility. Tina has over 30 years of experience in classic, complementary & environmental Medicine.

ABBY'S HEALING HAVEN 021 352 486. *Therapeutic and relaxation massage therapy 1 hour \$80, 90 mins \$110 *Pranic Healing-Chakra and energy clearing and balancing 90 minutes \$110 *TBT- Trauma busting treatment, an effective process for trauma and symptoms of PTSD, 60 minutes \$80 *Organic skincare and makeup consultations- Organic Ayurvedic facial massage 30 minutes \$45.

AFFORDABLE DESIGN for print and web. For businesses and artists. Tuition in Photoshop and Indesign available. Jacqui 022 392 8588.

ALL ASPECTS OF TREE WORK done professionally. Coromandel based Dynamic Tree Care. Call today 027 451 2224 or (07) 866 8177.

ARE YOU THINKING of having those needed jobs done? Whether it be Carpentry, Decorating, Tiling, I can give you advice and a free quote. Call Vaughan on (07) 866 7969.

AUTUMN IS COMING: Jobs to be done! Phone Vaughan Udall for a free quote (07) 866 7969.

BEGINNER YOGA WITH BECKS Tuesdays at the Anglican Church Hall, 170 Tiki Rd, 5.30pm to 6.45pm, \$10. All welcome, equipment provided. Phone 027 407 0079 for more info, www.rebeccaleaker.com

BICYCLE REPAIRS AND SERVICING Recycled/serviced bikes for sale. Miles Watson 020 4150 6575.

BROKEN GLASS? Call Mike Coromandel Glass (07) 866 8869.

CABINETMAKER specialising in high quality kitchen design and build. Full workshop set up available here in Coromandel now. For a quote or ideas please call Stefan on 027 759 4887 or (07) 866 7787.

CARPENTRY: Windows, Doors, Decks, Kitchens. Sound Tradesman. Free Quotes. Vaughan Udall (07) 866 7969.

COMPUTER FIX. Your local support and expert for computer repairs, upgrades, backup solutions, virus removal, software problems, purchase advice or tuition. Micha Wellnitz, ph (07) 866 8932.

COMPUTER SOLUTIONS. Microsoft Certified Systems Engineer with over 15 years of IT experience providing solutions and support service for PCs, Laptops, Printers, Wired and Wireless Networks, Virus and Spyware removal, Data Protection and Recovery. Up gradations, Consulting, Design and Training. Contact: Dheeraj Bali Ph (07) 866 7550 Mob 021 207 1341 E-mail: dbali@vodafone.co.nz
COROMANDEL CATTERY (07) 866 8117, 027 433 1665.

GARDEN MAINTENANCE AND LAWN MOWING. Keen, energetic and experienced. Miles Watson 020 4150 6575.

GIB STOPPER - Richard Field. Local and coastal. Ph 029 778 8645.

GIB STOPPER/PAINTER All Gib Services, Geoff, local 022 027 0290.

INTERIOR PLASTERER/PAINTER – Grant Smith ph (07) 866 8436.

MOBILE SHEEP SHEARING call AJ 027 499 1448.

NAILED@SHEPSPLACE Gel Polish and Nail Art Specialist phone or txt for appointment 022 432 4519.

NALAN KIRSCH LIFEFLOW COACHING & TRAINING: Leadership/Personal/Well Being/Mindfulness. Individuals & Teams. Ph: 021 515 707.

NEED CARPET? Carpet laying, uplifts, free quotes. Contact Shaun Davies 021 112 3888. top-laycarpets@hotmail.com. 20+ years' experience. No job too big or small.

PAINTING AND WALLPAPERING: Neat tidy work. Free Quotes. Vaughan Udall (07) 866 7969.

PROOF READER AND COPY EDITOR Give your writing professional polish. Confidentiality guaranteed. Qualified and Experienced. Manuscripts, brochures, CVs, letters... Contact Carolyn 027 868 6072.

RANCH SLIDER WON'T SLIDE? Call Mike Coromandel Glass (07) 866 8869.

ROOF CLEANING AND PAINTING. Roofs cleaned, repaired and painted. Tradesman has 28 years' experience. Top quality industrial paint used. Free quotes and advice on your roof. Ph Dave to tidy up your roof this summer ph 022 049 3649.

SOLAR SYSTEM DESIGN & INSTALL Good Energy your local Solar Specialists based in Whitianga. Ph Simon 021 242 3394.

STUMPGRINDING - Machine assisted stump removal, all sizes all areas. Ph 027 472 6627.

THE LIGHTHOUSE STUDIO: Joinery/custom woodworking, furniture, Persian rugs and LOCAL ART. Between Coro Pies and Morrissey Automotive, down the green lane. 75 Wharf Rd 021 038 0923.

TILING: Wall and floor tile laying service. High standard of work. Free quotes. Vaughan Udall (07) 866 7969.

WINDOW CATCH BROKEN? Call Mike Coromandel Glass (07) 866 8869.

FOR SALE

BOAT FOR SALE. 14" Fyran on trailer with Yamaha 40h tilt and trim motor in excellent condition. One owner. Regularly serviced and always garaged. Ph 027 221 1555. \$4500.

NOW SELLING NATURAL INTERIOR AND EXTERIOR OIL for wood. Made in NZ by the Naturalhouse Company. Excellent product, easy to use. Available from The Lighthouse Studio, 75 Wharf Rd ph 021 038 0923.

VELVET PADDED CAT BED, unused, \$30. Cat Harness, \$20. (07) 866 8593.

FOR RENT

A&J'S STORAGE Totalspan units Ph Judy 021 071 2252.

SITUATIONS VACANT

RELIABLE PERSON WANTED to deliver approx 700 Coromandel Town Chronicles to mail boxes in Coromandel Town once a month over a Friday, Saturday and Sunday. Great exercise! Txt Debbie on 021 235 6648.

TREE PLANTERS VACANCY: Colville Harbour Care is seeking 2-3 people to plant native trees in Colville this winter. Email for a job description. Applications close 5pm Monday 15 April 2019. Send CV with 2 references to Beth on chccoordinator@colville.org.nz or drop into Colville Social Service Collective.

WANTED

CARAVANS WANTED, any age/condition call Josh 022 139 6588 or caravanjoshnz@gmail.com.

CASH PAID FOR ANY CARS, vans, utes, trucks, 4x4. Dead or alive, damaged, de-registered, mechanical problem, no WOF - we buy it. Call 0800 333 398.

SEEKING HOUSE SIT. Reliable and honest female. Interested in long or short stay. Happy if owner needs to pop in regularly or occasionally. Can't wait to hear from you. Please contact Amy 027 293 3136.

WANTED ALL LIVESTOCK We inspect in the paddock. Also we transport every Thursday to Waikato's largest saleyards in Morrinsville. Phone Dave Coatsworth 027 481 7100.

WORK WANTED

DYNAMIC TREE CARE - Council approved professional local arborist service for all Tree Work. Fully Qualified, Equipped and Insured. Health and Safety compliant. Free quotes. Jobs large or small. Professional chainsaw sharpening. Call now (07) 866 8177 or 027 451 2224.

STUMPGRINDING - Machine assisted stump removal, all sizes all areas. Ph 027 472 6627.

TREE SERVICE. Dismantling or pruning. Free quotes. Call Jeremy Haszard 027 421 0603.

Advertisers' directory

Company	page
360 Discovery Ltd	5
A Taste of Matarangi	9
Alpha Drywall	9
Ann Kerr-Bell – Natural Medical Centre	19
Back Room Gallery	15
Coastal Small Engine Services	24
Coro Gym	27
Coromandel Accommodation	4
Coromandel Construction	11
Coromandel Garage Ltd	12
Coromandel Marine Engineering	14
Coromandel Marine Farmers' Association	19
Coromandel Plumbing (1986) Ltd	21
Coromandel Quarry Ltd	11
Coromandel Refrigeration	32
Driving Creek Railway	14
Dynamic Tree Care	10
Flooring Xtra	10
Gaia Decorators	10
Harcourts	16-17
Hauraki Taxation Service Ltd	8
Himalaya Shop	18
ITM	24
James and Turner	23
James Drainage '97 Ltd	20
Julie Pijfers Jeweller	23
Llandem Consulting Engineers Ltd	18
Lynley Ogilvie – massage therapist	22
Mana	20
Mercury Bay Art Escape	2
North West Welding	11
Papa Aroha Engineering	18
Peninsula Electrical Services Ltd	21
Purnell Lawyers	8
Richardsons Real Estate	6-7
Rob's Small Motor Repairs	4
Scott Revell Building Contractor	20
Scott Simpson MP	10
Star & Garter	2
Surveying Services	24
Tangiaro Lodge	2
TCDC	13
Te Korowai Hauora o Hauraki	21
Trinity Network	31
Twentymans	9
Waitaia Nursery	12
Whitianga Water Cartage Ltd	15

Coromandel Town weekly and monthly meetings

Every Monday

Step Aerobics at Coro Gym.....	8am
Free Guided Meditation, Mahamudra Centre.....	8.30-9.30am
Coromandel Hikers' Group, Hauraki House, Colin & Elspeth (07) 866 7137	9am
Monday Walkers, Irene 021 157 8408.....	9am
Sit n Be Fit at Coro Gym.....	9.30am
SeniorNet Coromandel contact Loes (07) 866 8053.....	4pm
Four-part harmony singing, Sue (07) 866 8833.....	7.30pm

Every Tuesday

Free Guided Meditation, Mahamudra Centre.....	8.30-9.30am
Pastel Artists Coromandel, Coromandel Aero Club Rooms (07) 866 7220	9am-midday
Coro Walking Group, Lotto Dairy, Ruth (07) 866 7246	9am
Croquet, Woollams Ave, Kaye (07) 866 8968	9.15am
Yoga for everyone, Colville Hall, Kate 021 125 3152	10am
Playcentre, Woollams Ave	10.30am-1pm
Beginner Yoga with Becks, at the Anglican Church Hall, 170 Tiki Rd, \$10.	
Contact 027 407 0079	5.30- 6.45pm
Coro Motorcycle Club, Star & Garter, John 027 234 1013	7-9pm

Every Wednesday

Free Guided Meditation, Mahamudra Centre.....	8.30-9.30am
Step Aerobics at Coro Gym.....	8am
Coromandel Community Organic Garden volunteers drop in time	9-11am
Sit n Be Fit at Coro Gym.....	9.30am

Every Thursday

Free Guided Meditation, Mahamudra Centre.....	8.30-9.30am
Coro Walking Group, Lotto Dairy, Ruth (07) 866 7246	9am
Coro Bowls club day.....	9.30am
Coro Art Group, St Andrew's Church Hall, Val (07) 866 8911.....	9am-12pm
Free Guided Meditation, Havalona Pyramid	10-11am
Body Balance & Yoga Classes at Trust Waikato Events Centre (upstairs Swimming Pool) contact Tina 021 201 9750	5.15-6.25pm

Every Friday

Step Aerobics at Coro Gym.....	8am
Free Guided Meditation, Mahamudra Centre.....	8.30-9.30am
Yoga for everyone, Anglican Hall, Kate 021 125 3152.....	9am
Croquet, Woollams Ave, Kaye (07) 866 8968	9.15am
Playcentre, Woollams Ave	9.45am-12.15pm
Coromandel Home-school Group, Julene (07) 866 8333	10am
Coromandel Tennis Club "club day"	4pm

Every Saturday

Free Guided Meditation, Mahamudra Centre.....	8.30-9.30am
RSA Coromandel, RSA Club Rooms Woollams Ave. Courtesy van available.	
Contact president Kevin Stone (07) 866 7576	3.30-7pm

Every Sunday

Free Guided Meditation, Mahamudra Centre.....	8.30-9.30am
Anglican Church Service	10am
Coromandel Tennis Club "club day"	1pm

Monthly

1st Mon – Coro Patchwork & Quilters, St John rooms,
Jill (07) 866 7484..... 9.30am-3.30pm

3rd Mon – Coro Patchwork & Quilters, St John rooms,
Jill (07) 866 7484..... 9.30am-3.30pm

1st Wed – Coro Embroiderers' Guild, St John rooms,
Margaret Burgess (07) 866 5769

1st Wed – Lions Dinner meeting, St John rooms.
Contact President Jean Smith 021 208 7576

2nd Wed – Garden Circle. Contact Jane Warren 021 232 2905

3rd Wed – Lions Business Meeting, St John rooms.
Contact President Jean Smith 021 208 7576

1st & 3rd Sun – Church Service at St Andrew's Church
Rings Road..... 10am

If your meeting has been omitted, please email Debbie at corochronicle@gmail.com with the subject "meeting", or txt/ph 021 235 6648, or post details to PO Box 148, Coromandel 3543. Please include contact name and phone number.

Coromandel Rubbish & Recycle Transfer Station & E-cycle hours

Tuesday and Thursday 11am-4.30pm

Saturday and Sunday 11am-5.30pm

KEY

New moon

Full moon

Tide times and heights from Land Information NZ and are for Coromandel Harbour.

For Thames times -15min High and -18min Low.

Blue bin bags out

Put recycling out

RN = Rural North

CT = Coromandel Town & Te Kouma

TC = Thames Coast & Maniaia

Make sure your event gets listed

To get your event listed, email the details, your name and contact phone number to Debbie at corochronicle@gmail.com with the subject "event". Or post to Jude Publishing, PO Box 148, Coromandel. There is limited space available and will be published subject to space availability, with preference to not-for-profit groups.

FRI

1

Mercury Bay Art Escape starts (see pg 25)

Free Community Lunch, Mahamudra Centre (see pg 14)

High tide 3.54am (2.5m), 4.09pm (2.4m)
Low tide 10.02am (0.8m), 10.28pm (0.8m)

SAT

2

Seafood Tournament startsat Coromandel Bowls Club (see pg 12)

High tide 4.53am (2.5m), 5.08pm (2.4m)
Low tide 11am (0.9m), 11.28pm (0.8m)

SUN

3

High tide 5.48am (2.5m), 6.04pm (2.4m)
Low tide 11.54am (0.9m)

4

Working Bee week starts at Coromandel Area School (see pg 22)

High tide 6.40am (2.8m), 6.57pm (2.4m)
Low tide 12.21am (0.8m), 12.43pm (0.8m)

5

RN

High tide 7.26am (2.6m), 7.44pm (2.5m)
Low tide 1.08am (0.7m), 1.28pm (0.8m)

6

High tide 8.08am (2.7m), 8.28pm (2.6m)
Low tide 1.50am (0.7m), 2.10pm (0.7m)

7

High tide 8.48am (2.7m), 9.05pm (2.6m)
Low tide 2.23am (0.6m), 2.50pm (0.6m)

8

International Women's Day Charity Breakfast (see pg 9)

CILT van trip (see pg 5)

High tide 9.25am (2.8m), 9.42pm (2.7m)
Low tide 3.05am (0.6m), 3.28pm (0.6m)

9

Mockingbird – a comedy about mental health. Tickets from Harcourts Coromandel

Coromandel Music Society presents The Sapphires (see pg 25)

High tide 10.02am (2.8m), 10.18pm (2.7m)
Low tide 3.41am (0.6m), 4.03pm (0.5m)

10

High tide 10.39am (2.8m), 10.55pm (2.7m)
Low tide 4.17am (0.6m), 4.43pm (0.5m)

11

High tide 11.17am (2.7m), 11.33pm (2.7m)
Low tide 4.55am (0.6m), 5.22pm (0.5m)

12

TC

Coromandel Marine Gateway – opportunity for getting your questions answered (see ad pg 13)

High tide 11.57am (2.7m)
Low tide 5.35am (0.6m), 6.02pm (0.5m)

13

Coromandel Garden Circle AGM (see pg 12)

High tide 12.14am (2.7m), 12.40pm (2.7m)
Low tide 6.19am (0.7m), 6.46pm (0.6m)

14

High tide 1am (2.6m), 1.27pm (2.6m)
Low tide 7.08am (0.7m), 7.35pm (0.6m)

15

Coromandel Music Society AGM (see pg 25)

Free Community Lunch; "Relax, Reflect, Revive weekend course starts at Mahamudra Centre (see pg 14)

High tide 1.55am (2.6m), 2.20pm (2.6m)
Low tide 8.05am (0.8m), 8.31pm (0.6m)

16

High tide 2.55am (2.6m), 3.20pm (2.6m)
Low tide 9.07am (0.8m), 9.35pm (0.6m)

17

High tide 3.58am (2.6m), 4.26pm (2.6m)
Low tide 10.13am (0.7m), 10.42pm (0.6m)

18

CHRONICLE DEADLINE – April issue content – 4pm

High tide 5.05am (2.7m), 5.34pm (2.7m)
Low tide 11.17am (0.6m), 11.46pm (0.5m)

19

RN

High tide 6.07am (2.9m), 6.37pm (2.8m)
Low tide 12.18am (0.5m)

20

High tide 7.05am (3.0m), 7.36pm (3.0m)
Low tide 12.45am (0.3m), 1.16pm (0.3m)

21

High tide 7.59am (3.1m), 8.31pm (3.1m)
Low tide 1.41am (0.2m), 2.10pm (0.2m)

22

High tide 8.52am (3.2m), 9.22pm (3.2m)
Low tide 2.33am (0.1m), 3.03pm (0.1m)

23

Treemendous at Coromandel Area School (see pg 22)

Coromandel Music Society brings you Paul Walker and Karen Peifer in an outdoor concert (see pg 25)

High tide 9.42am (3.2m), 10.12pm (3.2m)
Low tide 3.23am (0.1m), 3.53pm (0.1m)

24

High tide 10.32am (3.2m), 11pm (3.1m)
Low tide 4.12am (0.2m), 4.41pm (0.2m)

25

High tide 11.21am (3.1m), 11.48pm (3.0m)
Low tide 5.01am (0.3m), 5.29pm (0.3m)

26

TC

High tide 12.09pm (2.9m)
Low tide 5.50am (0.4m), 6.16pm (0.4m)

27

High tide 12.37am (2.9m), 12.58pm (2.8m)
Low tide 6.41am (0.6m), 7.04pm (0.6m)

28

High tide 1.28am (2.7m), 1.47pm (2.6m)
Low tide 7.35am (0.7m), 7.55pm (0.7m)

29

Free Community Lunch, Mahamudra Centre (see pg 14)

High tide 2.22am (2.6m), 2.39pm (2.5m)
Low tide 8.31am (0.8m), 8.52pm (0.8m)

30

Vinate Military Vehicles at The Club (see pg 12)

High tide 3.19am (2.5m), 3.35pm (2.4m)
Low tide 9.29am (0.9m), 9.52pm (0.9m)

31

High tide 4.18am (2.5m), 4.34pm (2.3m)
Low tide 10.26am (0.9m), 10.53pm (0.9m)

MON

TUE

WED

THU

FRI

SAT

SUN



We have even more properties online...

Check out even more properties for sale at
www.trinitynetwork.co.nz/properties/



TRINITY
NETWORK
REAL ESTATE
LICENSED REAA (2008)

New Listing

Asking Price \$1,085,000

4 bedrooms, 3 bathrooms, 1 car, 1 garage

Preeces Point, 285 Preeces Point Road
Download infopak: www.trinitynetwork.co.nz/136535/

Asking Price \$549,000

3 bedrooms, 2 bathrooms, 1 car, 1 garage

Coromandel, 19 Victoria Street
Download infopak: www.trinitynetwork.co.nz/136526/

Asking Price \$699,000

3 bedrooms, 1 bathroom, 1 car, 1 garage

Coromandel, 140 Kelso Lane
Download infopak: www.trinitynetwork.co.nz/136514/

Asking Price \$649,000

3 bedrooms, 2 bathrooms, 1 car, 1 garage

Coromandel, 383 Kapanga Road
Download infopak: www.trinitynetwork.co.nz/136524/

Asking Price \$205,000

3 bedrooms, 2 bathrooms, 1 car, 1 garage

Tuateawa, 537E Tuateawa Road
Download infopak: www.trinitynetwork.co.nz/136515/

Business

Asking Price \$149,000 + GST (if any) + SAV

3 bedrooms, 2 bathrooms, 1 car, 1 garage

Coromandel, Coro Cafe
Download infopak: www.trinitynetwork.co.nz/136287/

Asking Price \$1,199,000 + GST (if any)

4 bedrooms, 4 bathrooms, 2 cars, 2 garages

Coromandel, 2710 Tiki Road
Download infopak: www.trinitynetwork.co.nz/136516/

Asking Price \$3,200,000 + GST (if any)

6 bedrooms, 6 bathrooms, 6 cars, 4 garages

Coromandel, 1159 State Highway 25
Download infopak: www.trinitynetwork.co.nz/136152/

Asking Price \$1,800,000 + GST (if any)

4 bedrooms, 2 bathrooms, 2 cars, 2 garages

Waikawau, 602 Port Charles Road, lot 9 & 10
Download infopak: www.trinitynetwork.co.nz/136498/

Asking Price \$639,000 + GST (if any)

3 bedrooms, 2 bathrooms, 1 car, 1 garage

Coromandel, 1616b Manaia Road
Download infopak: www.trinitynetwork.co.nz/136146/

Asking Price \$400,000

3 bedrooms, 2 bathrooms, 1 car, 1 garage

Amodeo Bay, 1076 Colville Road
Download infopak: www.trinitynetwork.co.nz/136483/

Offers Over \$800,000

3 bedrooms, 1 bathroom, 1 car, 1 garage

Te Kouma, 11 Puriri Road
Download infopak: www.trinitynetwork.co.nz/136525/

Stock Standard Commission Saver

House Value	Higher Commission Rate Example	Our Commission	Savings
\$400,000	\$16,428	\$13,800	\$2,628
\$600,000	\$21,100	\$16,445	\$4,655

Trinity Network Commission is 2.5% up to \$500,000 and 1.8% there after + gst
Higher Commission Rate Example is based on 3.95% on first \$300,000 of sale price + 2% of balance of sale price + a \$500 fee + GST. Higher Commission Example is not based on any particular agency, average or standard charge made by other companies. Actual rates will vary between companies, branches and agents. The commission table and Higher Rate example are provided to help assess potential savings only. Trinity Network does not accept responsibility or liability if actual savings vary from the examples given. For more information please contact admin@trinitynetwork.co.nz.



Team Rob & John

Rob Keatley
0275 777 424
rob.keatley@trinitynetwork.co.nz

John McCaughan
021 212 4423
john.mccaughan@trinitynetwork.co.nz



TRINITY
NETWORK

The Full Real Estate Service | 0508 777 333 | trinitynetwork.co.nz

COROMANDEL REFRIGERATION & HEAT

Air Conditioning, Ventilation & Heat Pumps



Summer Deals



MSZ-GL25VGD/MUZ-GL25VGD
Small Room System

Cooling 2.5 (1.1-3.6) kW
5.5 star rating EER 5.14
Heating 3.2 (1.3-5.0) kW
5.0 star rating COP 4.83

Fully Installed Price:

\$2199 Incl GST*



MSZ-GL50VGD/MUZ-GL50VGD
Medium Room System

Cooling 4.8 (1.5-6.2) kW
4.0 star rating EER 4.32
Heating 5.8 (1.6-8.0) kW
3.5 star rating COP 4.19

Fully Installed Price:

\$3297 Incl GST*



MFZ-KJ35VE/MUFZ-KJ35VE
Floor Console Heat Pump

Cooling 3.5 (0.5-3.7) kW
3.0 star rating EER 3.84
Heating 4.3 (1.2-5.8) kW
3.0 star rating COP 3.81

Fully Installed Price:

\$3599 Incl GST*



MSZ-GL71VGD/MUZ-GL71VGD
Large Room System

Cooling 7.1 (2.4-8.7) kW
2.5 star rating EER 3.59
Heating 8.0 (2.2-9.9) kW
3.0 star rating COP 3.9

Fully Installed Price:

\$3999 Incl GST*



SV04 4 Vent Ventilation system

Fully Installed Price:

\$3140 Incl GST*

Create a healthier, drier home with a SmartVent home ventilation system. You can control window condensation, reduce damp and filter air to protect you the health of your family.

SV06 6 Vent Ventilation system

Fully Installed Price:

\$3960 Incl GST*



Ceiling insulation

430mm Autex GreenStuf® Polyester Ceiling Insulation Pads

R2.9 Installed from \$35.21 m2

R3.4 Installed from \$42.58m2

870mm Autex GreenStuf® Polyester Ceiling Insulation Roll

R1.0 Top up Installed from \$21.93 m2

R2.9 Installed from \$31.94 m2

R3.4 Installed from \$38.35 m2

Underfloor insulation

450mm, 500mm or 600mm Autex GreenStuf® Polyester

Underfloor Insulation Rolls

R1.5 Installed from \$25.97 m2

R1.8 Installed from \$29.62 m2

The GreenStuf® Difference

- 100% Polyester -Fire safe, non-flammable
- Not affected by moisture -No breathable fibres
- 50 year warranty -Made in New Zealand
- Declared 'Breathe Easy' by Asthma New Zealand



Daikin Central Ducted Systems

Central Air Conditioning and Heating

3 Bedroom system

3x supply air grills 1x filtered return air

Daikin FBQ50EVE

Heating 6.0 (3.5-7.0) Cooling 5.0 (3.2-5.6) kW

Fully installed from **\$6,611** incl gst

4 Bedroom system

4x supply air grills 1x filtered return air

Daikin FBQ71EVE

Heating 8.0 (3.5-9.0) Cooling 7.1 (3.2-8.0) kW

Fully installed from **\$7,577** incl gst

Full Home system

Up to 145Sq M Living Space

Daikin FDYQ100LBV1

Heating 12.5 (5.0-12.5) Cooling 10.0 (5.0-10.0) kW

Fully installed from **\$10,159** incl gst

Full Home System

Up to 225Sq M Living Space

Daikin FDYQ140LBV1

Heating 16.5 (6.2-16.5) Cooling 14.0 (6.2-14.0) kW

Fully installed from **\$13,414** incl gst



*Conditions apply, Prices available until March 28th 2019 or while stocks last. Split system prices are based strictly off a Back to Back installation. Installations include electrical connection and electrical certificate of compliance. Adequate cavity is required for Ventilation, Ducted systems and Insulation installations. A free no Obligation onsite quotation is available. www.perfectair.co.nz

07 866 8463