

March 2020
Volume 24 Issue 3

Coromandel Town Chronicle

The community magazine for Coromandel Town and surrounds since 1996

FREE
Community Magazine

The Bounty from Local Gardens

SEE PAGE 4



School children bowls PG 6



Farewell to Philip & Dallas PG 8



Play with clay PG 28



COROMANDEL/MANAIA

KI UTA KI TAI

HEALTHY CATCHMENT HEALTHY HARBOUR



Waikato Regional Council has been gathering information for a harbour and catchment management plan for the Coromandel/Manaia catchment.

We're looking to understand the current condition of the catchment to identify and prioritise what catchment works we can do with landowners to improve its environmental health and wellbeing.

We've been talking to iwi, landowners, residents and environmental groups who live or work in this catchment, from Long Bay in the north down to just past Waitotara Stream, Manaia, and found out what they thought was environmentally special about this part of the Coromandel Peninsula and how they'd like to see it in the next 20-30 years.

DROP-IN DAYS AND SURVEYS

We sent out an invitation to all ratepayers in the catchment to attend a drop-in day in Coromandel to meet and talk to us about their concerns and vision for their harbour areas. A survey was provided for those unable to meet in person and who were interested in having a say. We gathered feedback from those who attended the drop-in days, and received 31 surveys from respondents.

We asked people what they valued about their harbour and catchment, what they thought the key environmental issues were, and what could be done to address those issues.

WORKSHOPS

We invited all rural landowners with properties greater than 5 hectares to attend a workshop in Coromandel in October. Twenty landowners with 350 years of collective history attended and shared their knowledge of living and working in the catchment. Sedimentation, poor water quality, plant and animal pests, flood hazard risk (including climate change and rising sea levels) and pollution were their key concerns. They wanted improved biodiversity and better integration of work across the catchment. It was also felt that forestry, roading and urban development impacted on catchment health, and a marine reserve and predator free areas were aspirations.

We also held a workshop with representatives from Waikato Regional Council, Thames-Coromandel District Council, conservation and environmental groups/organisations, the health sector, farming, fishing and forestry industries and tertiary institutions to share their local and technical knowledge; and a biodiversity workshop with environmental volunteer groups who work across the catchment.

All the information collected at the drop-in days, workshops and via the surveys will help with the development of the Coromandel/Manaia Harbour and Catchment Management Plan.



It's important to note that the Coromandel/Manaia Harbour and Catchment Management Plan will be non-statutory and will not pre-empt the co-governance plan to be produced as a result of the Pare Hauraki Collective Treaty Settlement, nor change any existing consents that people own.

CATCHMENT CONDITION INSPECTION

A catchment inspection of riparian vegetation, fencing, stream blockages and erosion will be carried out in February and March. The results of this inspection will help guide and prioritise the work the council does with landowners to improve the health and wellbeing of the Coromandel and Manaia harbours and catchment. They will also provide a baseline against which success will be measured.



IN THE MEANTIME

If you've got a wetland, bush or stream enhancement project in mind, or want to carry out river management or weed control on your property, find out how we can help. The Whitianga Integrated Catchment Management team is a wealth of information, and we also give financial help for restoration works, soil and stream management and animal and plant pest control.

Need our help? Phone: 0800 800 401 or the Whitianga office on 07 866 0172.

Coromandel/ Manaia Harbour and Catchment Management Plan	The HCMP, its development, timeframes and getting involved	Emily O'Donnell Lynne Butler
Catchment management	Restoring a wetland, stream or forest area? Want to reduce erosion, run-off and improve water quality? Financial assistance may be available, and we can draw up a programme of works specifically for you.	Elaine Iddon Catchment management officer
Rivers or flooding	Eroding stream, in-stream blockages? Issues with vegetation choking a waterway? Our river staff can help.	Mike Theobald River management officer
Pest plants	Issues with pest plants? Not sure how to control a pesky weed? Just need some advice?	Benson Lockhart Biosecurity officer – pest plants
Navigation Safety	Moorings, safety on the water, jetski registrations and concerns about others behaviour on the water.	Harbourmaster

Coromandel Town Chronicle

Cover picture: The Flower and Produce Show in February

The *Coromandel Town Chronicle* is published by Jude Publishing Ltd. It is delivered free to the Coromandel area.

Jude Publishing Ltd
PO Box 148, Coromandel 3543
www.coromandeltownchronicle.co.nz

For advertising please email Debbie on
corochronicle@gmail.com
or phone 021 235 6648

If you have any news stories that you'd like included please email corochronicle@gmail.com or post to PO Box as above.
If you are not sure how to put an article together for publication then find tips and advice on the website: www.coromandeltownchronicle.co.nz/html/guidelines.html

The Coromandel Town Chronicle is open for everyone to contribute, however the editor reserves the right to select the articles, advertisements and letters that are published.

The Coromandel Town Chronicle is printed with vegetable oil based inks by Print House Ltd, Hamilton.
An accredited FSC and PEFC printer.

Deadline for the next issue is 4pm Monday 16 March

Want to support the CTC? Live out of town? You need an annual subscription.
\$48 (incl. GST) NZ postage only.
See contact details above.

Disclaimer: The publisher and its editors of the Coromandel Town Chronicle shall not be responsible in any way for opinions expressed in letters and articles contained in the Coromandel Town Chronicle or for loss or damage suffered by anyone in reliance upon the information contained therein. Further, no endorsement of any product or service featured or advertised in the Coromandel Town Chronicle should be implied or assumed.

ISSN 1178-721X (Print)

ISSN 1179-4895 (Online)

Editor's comment

I met John Irvine in Colville in February. He has been supplying poems to me for the Chronicle for the past 12 years. It was good to catch up with him and he kindly wrote me a poem (right). Words are obviously a major part of his life. Thanks John. I'll be helping him get some more books published.

Hopefully by the time you read this we will have had some rain. The only rain recently has been over almost before it has started and my veggies are parched. Great to see so much lovely produce at the Coromandel Flower and Produce Show – our cover story this issue – despite the lack of rain.

Unfortunately I've only been able to do eight pages of colour this month – has been nice the last few issues doing it full colour – but advertising dictates what I print.

Debbie

.....

Letters and opinion

The Coromandel Flower and Produce Show

As the main organiser of the show, I would like to express my sincere thanks to all of the sponsors who generously supported us with printing, promotion, prizes, products for afternoon tea, entertainment and a beautiful venue. Further thanks to the many willing volunteers who stepped up to make the event a huge success. Unfortunately I can't thank you all individually but I am truly overwhelmed by the warm community spirit I experienced at every step of the way. It's times like this that we see tangible evidence of a healthy community. The show was dependent on people entering flowers and produce and they did that in numbers. Despite the drought, local gardeners, cooks and bakers found plenty to exhibit. It was a wonderful event, raised close to \$600 for the Coromandel Town Information Centre and has encouraged me to start planning for next year. Thank you Coromandel Town.

Robin Münch, Coromandel Town

Community feedback wanted

Hi Coromandel,

Corotime has happily served you, its loyal customers, for over three years and in that time we have expanded our product lines to offer you an eclectic mix of clothes, collectables and costumes.

We are always striving to provide you with products that you want or need. So our simple question is, what do you think Coromandel needs? What is the town lacking and how can we help to fulfil your wishes? As the saying goes, "your wish is our command"!

Coromandel is well served with eateries, gift shops, craft outlets and shops that provide us with the basics but what is our community lacking and can we, at Corotime help fill the gap?

If you have some good ideas for what we could stock to help the community, come on in and have a chat with Sue. We are always open to new ideas.

Drop into the shop and we'll look forward to hearing your great ideas.

Sue Philbin, Corotime, Coromandel Town

Te Kouma Boat Ramp

To TCDC (cc the Chronicle)

We have been visiting your region for a number of years and have always contributed to the above ramp upkeep and development by way of parking fees.

So far we have seen nothing spent on the ramp and it continues to be marginal in its operation in some weather conditions.

A floating pontoon wharf on the trailer boat launching ramp would markedly improve its ability to cope in rough conditions and would be extremely easy and low cost to accomplish.

Why has nothing been done to date to improve this facility and where are the monies going that are being collected?

We have the option to go elsewhere I guess and have in the past travelled to the Far North where there are excellent ramp facilities, however this doesn't do your local businesses any good as they will be losing customers for accommodation, equipment, fuel, food, etc.

Are there any plans to ever upgrade this facility or should we plan this year and subsequent years in another region?

Regards,

David Hughes

Send letters to the *Coromandel Town Chronicle*, PO Box 148, Coromandel 3543 or email to corochronicle@gmail.com. Contributions should be kept short, and should not exceed 350 words. They must include name, address and telephone number. The editor reserves the right to reject letters or edit them for clarity and space.

Meeting a Star!

By John Irvine
For Debbie

I met a special girl today
who will help me in my poet's play
I am a lucky boy today
I am!

She's talented in many schools
art and graphics are her tools
she's not the sort to suffer fools
she's not!

This lady will sort my books
correct and change the way they look
make them perfect – no hidden hooks
she will!

So in advance I thank you girl
you've set my scattered brain a-whirl
I tell you true you are a pearl
you are!

Poetry
SPOT

more letters overleaf...

Letters/opinion continued

Closing up

The Lighthouse Studio is closing up shop. I would like to thank all of my clients who have supported us for the past eight years. We will be having a closing out garage sale on **7-8 March**, 10am-4pm. Lots of woodworking tools, timber and wood cutoffs – especially kauri and cherry.

All wood cutoffs sold for gold coin koha will benefit the Coromandel Preschool. Come in to pick up a bargain, or just drop in to say hi. 75 Wharf Road across from the Four Square.

Thanks again,

Tom Bickerdike, Coromandel Town

McGregor Bay wetland

Dear Editor,

I am writing in response to a letter in last month's Chronicle regarding the McGregor Bay wetland. The letter included some inaccuracies.

A structure, a wooden slatted structure by all accounts, may have been consented in the 1970s though there appears to be no record of this. There may have been some repairs made to this structure and it may have changed over the years but around 2015, a large concrete slab which bears no resemblance to the original gate, was erected at the seaward side of the culvert and this concrete slab is not permitted or consented. As well, drainage works in the wetland similarly have no consent. Both the concrete slab and the drain restrict the amount of water that is able to flow onto the wetland.

Human interference over some decades has seriously impacted on this wetland which is now less than half its original size. While previous generations were unaware of the significance of wetlands to ecosystem health, these days we understand better the importance of protecting these critical habitats

It is my understanding that Waikato Regional Council is in communication with the Thames-Coromandel District Council to ascertain the rules and laws that apply in this situation. There is a statutory process underway.

I am aware that many members of the wider Coromandel community and local landowners are concerned about this deteriorating wetland. The McGregor Bay wetland society have been setting traps in the area with good results, which perhaps accounts for four banded rail seen recently. However, invasive weeds are proliferating and the area is not functioning well as a wetland. Finding a solution that restores the integrity of the McGregor Bay wetland is long overdue.

Kate Donoghue, Coromandel Town

Solution to water supply?

I am one person out of many who can not understand why Cadman's Dam is not cleaned out, as it was every year. It held 375,000 gallons when cleaned and full. Beautiful, tasty, clean water, it supplied all over Coromandel for over 100 years.

For those that do not know where this dam is, it is three quarters of the way up the Whangapoua Road hill. Look into the gully and there it is in front of a bush reserve. There is a six foot easement right up the base of the gully – for the big pipes. regards

Shirleen Notman, Coromandel Town



Cadman's Dam

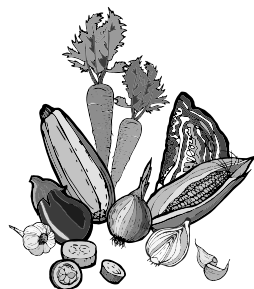


COROMANDEL.N.Z

866 8635

See meeting list for class times

Produce on Show



By Sandra Wilson

On 16 February it was the first Flower and Produce Show fundraiser for the Coromandel Town Information Centre, and what a fabulous day it

was! Over 40 people entered their flowers, fruit, veges, preserves, chutneys, and baking for judging. They came as far away as Tuatua and Thames. It was fabulous to see children entering as well. Great feedback from those who entered and those who came to see what it was all about. And now everyone is looking forward to next year's event.

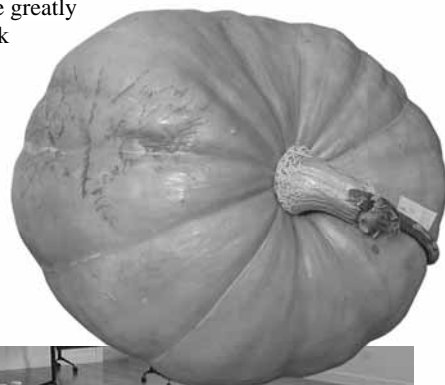
Now there are some very special people to thank for organising and supporting the event: First, Robin Munch; she organised and was the driving force behind it. I also want to thank our local businesses and other entities: Coromandel Accommodation, Driving Creek Railway, Bush e Bikes, Coromandel Garden Centre, Colville Harbour Care Nursery, Richardsons Real Estate, Naturally Coromandel, Coromandel Honey Ltd, Korukai Herb Farm, Coromandel Independent Living Trust, Thames-Coromandel District Council, Coromandel Four Square, James and Turner, Stephanie Thatcher, Rebekah Pearson and all of the exceptional volunteers who helped Robin get this happening with all of their help on the night before and on the day.

From all of the support from you who entered and came to see the show, a big thank you. The total raised was \$600.

The Coromandel Town Information Centre greatly appreciate the work Robin has done as it contributes to the running costs of the centre, keeping it open for our locals and tourists alike.



Best in Show – Dale Bower



Writers' Group

By Megan Mackie

The Writers' Group met at Te Kouma last week and eight members were present. Our efforts this year are to be centred around Seasons.

We hope to participate in research being conducted by Bergen looking at Seasons on the Coromandel.

Our rapid writing exercise "Emotions of High Summer" ranged from the present day to summers long gone.

Seasons on a Seaside Section

Clay cracking in the summer drought makes it very obvious that rain has been scarce this summer. Even the tough kikuyu is showing a shade of brown not often seen in this heat-tolerant grass. The growth has slowed while plants and trees pause in their life cycles. I ponder whether to use precious water on a small crop of figs then remember how they grow in hot countries. Often in ground even more inhospitable than mine. And with little rain in summer. They should survive but I will have trouble beating moisture craving birds to the fruit as they ripen.

By then autumn will be on the horizon. Looked forward to in this part of the world – more settled weather, blackberries ripening and the lemons on the tree starting to expand into the golden goodness that will be ready to pick in winter. The first rains after a long drought will have freshened the ground and the water tanks will be replenished with this precious commodity.

Many people seem to relax in autumn. The shortened days seem more restful after the harshness of the summer sun.

Winter may come gradually or with a sudden blast. Firewood has been stored over the summer and that first fire of the season brings a warmth to not only body but soul as well. Our diet changes from green leaves and squishy red tomatoes to slow-cooked warming recipes. The little wood fire often has a dish bubbling on it – the smells offering an invitation to a warming meal later in the day.

Rain may become a pattern and winter storms can be vicious in this part of the world. Power outages not so common now but possible. Most people here are quite able to manage for a few days without this convenience.

Abnormal storms sometimes cause flooding road blockages and slips – the price we pay for living amongst the rugged wonderful scenery of the Coromandel.

With constant rain the section becomes boggy and waterlogged, with the clay soil unable to drain freely.

But eventually spring will appear – not signalled so much from the leafing of deciduous trees but from the activity of bird life.

Swooping, darting, chattering on the quarter acre. The family of quail counted daily to note and hope that many reach maturity. Tui dive and swoop outside the window and chatter furiously, leading humans away from their nests in the manuka.

Kereru swoosh overhead and perch drunkenly in the apricot tree, feasting on the growth of the new leaves. Hopefully they will leave enough cover so any blossom and fruit can be hidden from their keen eyes and sharp beaks when spring turns into summer.

The year's cycle begins again.

Bits 'n Bobs from New Zealand's past 200 years

1867-1867 - Coromandel Gold Rush

1870 - First golf course opened in Dunedin

1876 - the first trans-Tasman submarine communication cable completed allowing telegraph services with the rest of the world

1900 - Cook Islands becomes part of N.Z

1926 - Pavlova invented in Wellington

1960 - Population 2,403,600

Dates supplied by the Coromandel 200 working group

How good is your hearing?

TV up too loud?
Missing conversation?
Can't hear the car indicators?
It's time you had a hearing test.

**Book now for a
FREE hearing check.**

Free hearing aid trials available.

Before buying a hearing aid...
shop around and
compare our prices.

You may be eligible for ACC
funding or Government subsidy.

Total
HEARING CARE

Ph 07 868 8454



Next Clinic: Tuesday 17th March
at Tiki House, Coromandel Town

Total Hearing Care
102 Sealey Street, Thames

Coromandel Bowling Club

By Cherrie Rokela

We have had great success with some of our members recently winning Thames Valley titles. Dolly Welch won the Champ of Champs Women's Singles, and Lindsay Nicholls won the Open Women's Singles.

We are hosting the Thames Valley Mixed Singles final at our club very soon, and that will be contested by two of our bowlers, Colin Gawith and Lindsay Nicholls.

We are certainly keeping the Coromandel Bowls flag flying in the Valley!

The Summer Cup was won by Mercury Bay this year. It is always a fun tournament against our friends and rivals from Whitianga.

Twilight Bowls is very popular every Tuesday evening. The school children are now playing their own tournament at 3.45pm, before the adults commence at 5pm.



Twilight Bowls – school children tournament

Combined Clubs Of Coromandel THE CLUB



Winners of "Tidewater Motel & Tourist Park" Pairs, Ernie Groucott and Philippa Medlock

Preparations are well underway for our biggest tournament of the year – the Seafood Tournament on **7/8 March**. Teams from as far away as Napier have entered this popular event.

Hoping for continued fine weather for this weekend.

RSA News

By Pat Williams

I was planning to get this article written real early this month. "The best laid plans of mice and men" as the old saying goes. So true. Got invited to a clan gathering on the 14th-17th. So enjoyable though. Well worth the last minute rush.

Last month I wrote about the human casualties of war. This month it is the animals – New Zealand's "Forgotten Army". A plaque has been dedicated to officers and soldiers of The NZ Veterinary Corp. at Massey University Veterinary School. This site was chosen as the ideal place, it being the only veterinary school in NZ. Wreaths were placed at the base of the plaque, The Ode to Remembrance was read and the Last Post sounded. The hour-long ceremony was also attended by Yardley, a golden labrador explosives detection dog and Afghanistan veteran, and Alsation Infantry support dog Ida, from Linton Military Camp.

Animals played a huge role in NZ wars from the conflicts of the 19th Century. NZ sent 8,000 horses to the South African War and 10,000 to World War 1. That was stopped in 1916 as horses were becoming very scarce and they were needed here for farm work.

The New Zealand Veterinary Corp. was formed in 1907, and during WW1 comprised a small number of qualified veterinarians as commissioned officers, along with blacksmiths and farriers, groomers, teamsters and wagoners. Receiving treatment mainly in WW1 were bullocks, horses, mules, donkeys, dogs and carrier pigeons. Despite being overwhelmed by numbers, having to be treated the vets provided exemplary service, with only 2% of the animals succumbing to illness or disease.

24 February is set aside for a Day of Remembrance for Service Animals and the emblem is a purple poppy.

In the same correspondence I gleaned this info from, were two pictures of fields of poppies in Christchurch. All RSA's a few years back were sent packets of Flanders Fields poppy seeds. I bought seed-raising mix, stirred in the poppy seeds and set forth for our Memorial Forest in Hauraki Road. Chucked it all about; sadly no great explosion of colour! Maybe they were South Island seed.

Proverb for the month – A generous action is its own reward.
Till next time, keep smiling.

Pick It Up Now

By Jo Sanderson

We are so lucky living in Coromandel.

Plastic-free isn't just the latest catch phrase to say up here – many of us practice what we preach.

Plastic-Free Coromandel has done the most amazing job bringing awareness and the challenge of change to us all and it is now up to all of us to put into practice to consciously use fewer single-use plastics in our day to day life.

It is not good enough anymore to merely share a post on Facebook and think that is our contribution to the plastic problem.



It is simply not enough coming along to beach cleanups thinking that you have done your bit.

We have to start back at home and use fewer single-use plastics.

Supply is met by demand so if the demand drops for single-use plastic items, it will cause a flow-on effect for less supply – and hopefully will get the powers to be in the big companies to start thinking of a more ecofriendly alternative.

We have the power – the consumers.

Make your statement now and make a change.

If you are unsure where to start, here are some ideas.

- Refuse to buy coffee in a takeaway cup – always have a reusable cup in your car or

house.

- Refuse takeaways in plastic containers and with plastic utensils – bring your own container and utensils.
- Refuse to buy bottled water – buy an ecofriendly drink bottle and refill it yourself.
- Don't use wet ones. Did you know they are made from plastic? – A wet rag has worked in the past – why not now?

We hold the power in our plastic polluted lives. Say no and find an alternative.

Next Pick Up

Sunday 15 March 9am, children's playground and surrounds, Hauraki House reserve, Kapanga Road, Coromandel Town.

Keep a look out on our Facebook page for more details.

www.facebook.com/Pickitupnownz/



Small Motor Repairs

**Come along and see us in our new shop at
18 Kapanga Rd (old 4Square)**

Rob & Carolyn 866 7865 or 021 618 601

WE PAY TOP CASH

For any Vehicles: Dead or Alive, damaged, de-registered, mechanical problem, no WOF we buy it all.

WE PAY TOP CASH FOR ANY
CARS, VANS, UTES, 4X4, TRUCKS

FREE PICKUP



Conditions apply

24/7

FREE CALL

0800 333 398

Or text 021 344 449

www.vehicleremovals.co.nz

OUR COROMANDEL



News from Thames-Coromandel District Council

March 2020

Calling all stallholders, street performers and musicians for the Coro 200 Illume Festival

If you're a stallholder, food truck operator, street performer or musician and want the opportunity to promote yourself or your business at the Coro 200 Illume Festival – we want to hear from you.

Over Queen's Birthday Weekend, from May 29-31 2020, the commemoration of the 200th anniversary of the visit of the Royal Navy Ship 'Coromandel,' after which the town and our peninsula are named, will combine with the Illume Festival in Coromandel Town.

Organisers are still looking for stalls and food trucks to sell their products at the Power Co Night Markets on the main street of Coromandel Town during the festival. There is a small cost of approximately \$40 per night.

If you are interested in setting up a stall, selling food or performing at the Coro 200 Illume Festival contact Daniel Smith at illume.coromandel@gmail.com

On Friday 29 May there will be a DJ performing at the Barry Brickell Memorial Stage. The Disney Kids Zone will also be on Friday night for parents to take their children to enjoy a variety of fun Disney activities.

On Saturday 30 May there will be a themed ball at the Coromandel Citizens Hall, in conjunction with live music at the Samuel James Reserve featuring talented musician Gemma Loudon as part of the entertainment for the weekend. Tickets for the ball are \$30 per person and can be bought at the Coromandel



Information Centre. The entertainment includes a wide variety of music, with a live band. Add some world-class dress ups, food, drinks and dancing to the mix and this will be a night to remember.

The dedication for the HMS Coromandel will be at 11am Saturday 30 May at the Whangarahi Reserve followed by a commemorative

planting at the Albert Street Reserve.

The street parade follows on Sunday 31 May. We are encouraging locals and businesses to participate in this. You can decorate anything from floats, cars, trailers, push prams, or just yourself. There will also be the Richardson's Real Estate fireworks display over the town and the live music will continue at Samuel James Reserve.

Summer water use

As dry weather is forecast into March, we may need more restrictions on water use as supplies continue to come under pressure. Water restrictions are shared daily on local radio stations, our Council's Facebook page and the home page of our website. Please use water responsibly.

Water use restrictions are not just a response to the high numbers of visitors we have to the Coromandel over the summer months.

Restrictions are required to help us meet the specific requirements of our resource consents from Waikato Regional Council, under which we draw limited amounts of water from streams and rivers, or pump it from bores in the ground, and then treat it to make it safe to drink.

tcdc.govt.nz/water

techweek2020

Tech Week in Coromandel Town

We are hosting a Tech Day in Coromandel Town on Wednesday 19 May to celebrate that New Zealand's technology and innovation sectors that are growing rapidly. Once the venue is confirmed we will post this along with more information about the event across all of our Thames-Coromandel District communication channels.

Kerbside Collection

The non-summer Kerbside schedule is now operating. Please visit tcdc.govt.nz/kerbside for information.



tcdc.govt.nz/kerbside

If you leave town before your collection day, you can drop off your blue rubbish bags and recycling for free at your nearest Refuse Transfer Station (RTS). Hours and locations:

tcdc.govt.nz/rts

FIRE BAN

Fire and Emergency New Zealand (FENZ) has declared a Prohibited Fire Season, which means a total fire ban in urban and rural areas. If you see an out-of-control fire phone 111. checkitsalright.nz



HAURAKI COROMANDEL BUSINESS AWARDS

Entries open 1 April 2020

- Be recognised for your hard work and achievements
- Reflect on your systems and process
- Celebrate success with your local business community

To view the category's and for more information see haurakicoromandelbusinessawards.co.nz or email info@haurakicoromandelbusinessawards.co.nz



Get our free eNewsletters!
www.tcdc.govt.nz/subscribe



www.facebook.com/ThamesCoromandelDistrictCouncil

www.coromandel.govt.nz

customer.services@tcdc.govt.nz
Private Bag, 515 Mackay St, Thames
Phone: 07 868 0200

Farewell to two of our community

A Tribute to our friend and priest – Fr Philip Sallis

By Vivianne Flintoff, Christ Church, Coromandel Town

Philip was so much more than our parish priest and there may be others who write of their connection with him and what he has meant to them. For those of us who make up the congregation here at Christ Church – or the Anglican Church as it is more commonly known – Philip was both friend and priest. He loved Coromandel Town and this local community. Love is the word that encapsulates both the man and priest. Philip was centred and grounded in love. Love of his God and all those who came across his path: the crux of the Christian spiritual pathway. His Christian spirituality was solidly heart-centred. Philip's theology was shaped by high church Anglicanism and Benedictine Rule. A highly intelligent man yet humble, generous, good-spirited, kind, committed, dedicated, open-hearted, a good listener and a lover of good food, good music and good company. His humble veggie patch was converted into a small vineyard behind his and Kathy's meticulously restored villa. Philip was meticulous in all he did. He was fully present when meeting with another. He knew each of us and what was important to us. For example, he greeted one of the parishioners each Sunday, singing "Don't worry," to which the sung response would come back, "be happy." He related his sermons to the ordinary things of our lives and helped to make Christian faith more accessible. Philip, in many ways, was a big man with a large personality able to engage with many people across ethnicities and different backgrounds and interests. He loved his animals, Charlie the dog and Gandalf the cat. We miss Fr Philip. We thank him for his gifts to us and for enriching our lives.

"Rest eternal grant unto Philip O Lord,
and may light perpetual shine upon him.
May he rest in peace, and Rise in Glory."



Obituary for Dallas George Hannaford

12 June 1928 - 20 January 2020

Dallas George Hannaford was born in Coromandel on 12 June 1928, the fourth of six children born to Olive Campbell and Frederick Hannaford. The oldest was Bob, then Mary, Freda, Dallas, Patricia and Shirley. They lived on Wharf Road next to the Golconda Hotel (now renamed Admirals Arms) while Olive's parents, Bob and Emily Campbell, lived on the Te Kouma property which had been in the family since the 1830s. Dallas and his siblings went to school in Coromandel and then later to Sacred Heart and St Mary's in Auckland. After leaving school Dallas worked as a timber worker and then left NZ to study theology at the Franciscan Novitiate in NSW in the late 50s and 60s. He was ordained as Franciscan Brother in 1964 at the age of 35 and became Brother Daniel. He spent the next seven years working as a brickie's labourer at St Paschal's College Friary in Melbourne with a group of Brothers where they built a church and a library.

Dallas spent several years living at Te Kouma looking after his mother and after her death he returned to the Friary in Hillsborough before his next mission to Africa. There he worked with a group of other friars among the poor and destitute, helping out in practical ways such as finding water and food and buying school uniforms with money his family sent to help. He returned from Africa around 1998 and returned to his family home at Te Kouma where he lived quietly in solitude and prayer, with regular visits back to the Friary. On 6 January Dallas suffered a major stroke and from then until he died two weeks later he showed such stoicism, courage and patience.

The Hannaford family would like to thank the Coromandel community, the medical staff here and at Middlemore Hospital and his friends in Coromandel for the care and friendship shown to Dallas. Also to the Franciscan Order for their support and care of Brother Daniel.



Plastic-Free Coromandel Town

By Robin Münch

Our group is holding its first meeting of the year as the Chronicle goes to print and we're planning our community activities and involvement for 2020. Watch this space, follow us on Facebook and please join our group if you're interested in reducing waste, especially single-use plastic.

We are genuinely impressed that there was no plastic to be seen at the Coromandel Flower and Produce Show (except for the wrappers on two recycled serviette packets and a stray square of Gladwrap on an exhibit). The organisers, entrants and public proved that it is possible to stage a successful event using reusable products only and generating very little waste at all.

We'd like to express a special thank you to Annette Clarke. Annette is unable to be part of the group this year but she stays loyal to us and sells Plastic-Free-Coromandel bags at the Market Hub on our behalf. All money from the bags will be used to develop waste-free activities in Coromandel Town.

Annette still has some lovely material for the bags but we need heavy cotton, calico or cloth from curtain liners for the pockets. If you have some that you could donate, please take it into the Market Hub opposite the playground on Hauraki Reserve or leave us a message on our Facebook page – Plastic-Free Coromandel Town. Thank you!



SCOTT REVELL

BUILDING CONTRACTOR



- New Homes
- Renovations
- Additions \ Repairs
- Bathrooms
- Decks \ Fences \ Landscaping

Prompt Professional Service
srevell2010@hotmail.co.nz
027 861 6592
COROMANDEL

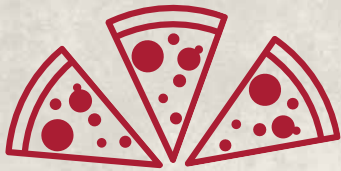


ASTON
ELECTRICAL LTD
COROMANDEL TOWN

- Registered Electrician
- Over 30 years' experience
- Prompt and professional service
- Domestic and Commercial
- Free to view satellite TV installations

Call now on 027 270 9140
or email astonelectrical@me.com

GIVE A LITTLE SUNDAYS



\$10 PIZZA SUNDAYS

\$20⁴ BOTTLES OF BEER

Heineken, Heineken 0%, Tiger, Sol, Xport Citrus, Xport 33

\$1 from every pizza is donated to a local community service.

**ALL DAY EVERY SUNDAY
DINE IN ONLY**


**STAR & GARTER
HOTEL**
Coromandel Town

CONDITIONS APPLY

HOUSE OF TRAVEL IS VISITING COROMANDEL TOWN

TALK TO THE EXPERTS ABOUT YOUR
TRAVEL PLANS

When: Thursday 19 March

Time: 10am to 3pm

Where: Resource Centre, Tiki House
45 Tiki Road, Coromandel Town



BETTER TOGETHER

640 PORT ROAD | 07 865 0010 | COROMANDEL@HOT.CO.NZ

HOUSE OF TRAVEL

JAMES & TURNER

KITCHENWARE · PAINT

HARDWARE · GIFTWARE

FISHING · CAMPING

MARINE · GARDENING

PLUMBING · ELECTRICAL

James & Turner 2014 Ltd
131 Kapanga Road
P.O. Box 16
Coromandel Town

Grant Webber
Ph: 07 866 8805
info@jamesandturner.co.nz
f search "James & Turner"

FLOORING XTRA

FREE
curtain making
on selected fabrics

Up to
35% off
selected blinds

Offer valid until 31st of March 2020

ON ALL FLOORS FLOORING XTRA,
90 KOPU ROAD, THAMES 07 868 7608
thames@flooringxtra.co.nz

FAGANS FLOORING XTRA,
68 ALBERT STREET, WHITIANGA 07 866 2836
whitianga@flooringxtra.co.nz

Just as no two days set the same, this is also true for funerals. Twentymans strive to learn how to tailor, create and bring the best funeral service we can for you.

**Funerals tailored for you
and your loved one**

TWENTYMANS

FUNERAL DIRECTORS
Since 1867

07 868 6003
funerals@twentymans.co.nz
www.twentymans.co.nz

Coromandel Contract Bridge Club

We are playing the Individual Championships in March. This competition has been brought forward on our calendar. We play at the St John rooms on a Monday evening.

Contacts

Lyn (07) 866 8858,
Val (07) 866 8730

Haiku

By Chris Wornall

it's a drought –
conserve water
drink more wine



Alpha Drywall

*Fix, Stop,
Cove & Paint
since 1986*



- Plasterboard Fixing, Stopping and Painting specialists
- All grades of stopping including Fibrous, Cove and GibBoard
- We specialise in wallpaper to paint finish upgrades
- Professional, reliable, quality service
- Free quotes

Phone Geoff 022 027 0290
PO Box 177, Coromandel

Email alphadry@gmail.com
AWCI (licenced trademan)



BUILDING CENTRE

COROMANDEL TIMBER
PH: 866 8848

"We'll see you right"

**Papa Aroha
Engineering**
Est. 1980 LIMITED

**Servicing Small Engines:
Ride-on Mowers
Quad bikes**



MIKE McCALL • 07 866 8469 • 027 223 7919
Email mikepapeng@gmail.com

Scott Simpson
MP for Coromandel

P Thames 07 868 3529
Kaitiaki 09 232 2588
Kotikoti 07 549 4312
E mpccoromandel@parliament.govt.nz
W www.scottsimpson.co.nz

National

Supporter of the Parliamentary Service Authority
for the 10th House of Representatives



**Join us, it could
change your life.**



St John
Here for Life

Are you 18 years or older, have held a full NZ drivers license for at least 12 months, have a clean Police and driver record, and can commit to ongoing clinical and station training? If so, we would love to hear from you!

Join your local ambulance station and help provide ambulance cover in your community. Volunteering as an Ambulance and Events Officer is a rewarding role, with flexible hours available. Become a first responder and gain NZQA recognised training.

To find out how you can train to become a St John volunteer, contact **Coromandel Station on (07) 866 8279**. You'll never look back!



Coromandel Garden Circle

By Jeni Mudgway

Garden Circle members have just enjoyed a day out to Greg Taylor's amazing veggie garden and workshop at Colville.

Greg's philosophy to enrich the soil with natural organic matter has truly paid off as even in this terrible drought his garden is thriving and healthy. This garden is huge and has everything you could wish for in a garden. His furniture is also truly a work of art; the wood is just beautiful!

We then backtracked to John and Linley's Papa Aroha garden. This has a real wow factor! All 32 of us enjoyed our afternoon tea on their Asian inspired shaded courtyard with its fish pond, under palms and other exotic plants.

Their years of hard work planting and step building have created a beautiful seaside paradise. Thank you for sharing!

Our next meeting will be at The Club 1pm on **11 March**. We will have a local speaker and a quiz. All welcome.

Hon Scott Simpson MP For Coromandel

Big Dry

Water restrictions and fire bans have become a regular part of summer life here on the Coromandel Peninsula. Our farmers are doing it tough. In other parts of New Zealand there has been some government assistance, not much that's true, but here and across the Hauraki Plains we haven't seen a cent.

For keen gardeners the summer has been particularly stressful. I can't understand why we don't better anticipate regular summer water shortages. It's not as though we have a shortage of reliable rainfall during the winter months. We know summer arrives at the same time each year and that storing rain water from the winter is surely a good idea to help manage our way through summers like the one we're having this year.

In Australia, it's mandatory in most states for rooftop rainwater collection and storage to be built into new homes as they are being built. They have a range of smart water storage tank options that can and are built in under homes and decks, hidden by fences or imaginatively designed into the design of the house at the construction stage. Plumbing is fixed in a way that means the roof water stored is used for toilet flushing and outside taps. Usual town supply water is plumbed to kitchens, bathroom hand basins, laundry and the like.

Making these provisions during construction is relatively inexpensive as part of the total build but the lifetime savings and gains are huge, not only for the homeowner but for the wider community, as demand on council water infrastructure is reduced.

Around the Peninsula we have literally thousands of people living with 100% tank water. It seems sensible to me that new home builds could easily add tank storage of rooftop collected water and that would be an efficient and effective way to help make lives easier during summers like we're having this year.



**Coromandel
QUARRY &
Contracting Ltd**

- All grades of metal delivered
- Driveways, roading, earthworks

Telephone 07 866 8306

email: richard@cqc.co.nz www.cqc.co.nz

Wild things

By Carol Sutherland

Ducks in a row

This photo was taken by Graeme Hadfield of pateke in McGregor Bay Wetland.

Pateke were once widespread throughout New Zealand but became so rare that the population was largely restricted to Great Barrier Island. However, it is now regarded as a species that is recovering thanks to relocation backed up by community groups carrying out predation control. On the Coromandel MEG was involved in the recovery process.

According to DOC website the main threats are: predation (from introduced mammals as well as native predators such as pukeko); habitat loss (through wetland drainage, forest clearance, and estuary reclamation); hunting; road kill; dry spring and summer conditions with reduced food abundance, increased competition and hybridisation with mallards.

They are omnivorous and are more active at twilight although the tides also have an influence on foraging.

Breeding season is from July to October, with them laying 3-9 eggs with both parents guarding the chicks until they fledge around 50 days after hatching.

You can find them on the Peninsula in mainly estuarine areas.

mcmcgregorbaywetland@hotmail.com welcomes wildlife photos

Everyone knows the best place to go fishing is near a mussel farm. Please follow these guidelines to keep everyone safe.

- ↔ **Keep 30 meters** from working mussel barges at all times
- ⚠ **Don't tie-up** to a line being worked on
- ⚠ **Never cast your line** towards a mussel barge – farmers have been injured from flying hooks and sinkers
- ⚠ **No Anchors.** Tie-on to a longline buoy or use approved mooring hooks
- ⚠ **Minimise your speed and wake**
- ⚠ **Never drive across the lines**



www.coromfa.co.nz

/Richardsons

Real Estate Ltd MREINZ / Coromandel
Licensed REAA2008

Meet the team... Kim, Robyn,
Melissa, Laurie-Ann & Lynne



* STUNNING harbour panoramas * Great decking for superb alfresco living * Open-plan lounge/dining/kitchen * 3 brms * Office/4th brm * 2 bathrooms * Single garage * Boat parking space * Walking access to private beach opposite * **\$799,000**

* LONG BAY!!! * Wonderful harbour views unfold from this 1,174m2 section * You may already have your dream home designed? * Serviced section * Relatively easy walk down to Long Bay & McGregor Bay * Explore your options * **\$399,000**



* A magical harbourfront setting on the idyllic Wyuna Bay Peninsula * 888m2 section leading down to the beach * Open-plan living * 3 brms * 2 bathrooms * Brilliant decking * Boat parking area * Fantastic holiday destination * **\$845,000**

* A PERFECT 1st home or rental proposition * Set in the well-established Lillis Lane subdivision * Three bedrooms * Two bathrooms * Separate loft style lounge * Single garage * Private courtyard & well-fence rear section * **\$510,000**

/Richardsons

Real Estate Ltd MREINZ / Coromandel
Licensed REAA2008

Proudly making real estate
a reality for Clients and
Customers for over 59 years

www.richardsons.co.nz

151 Kapanga Road, Coromandel

Ph: 07 866 8900 ~ Kim 021 533174

Robyn 021 448975 & Melissa 027 2498287

Rental Manager ~ Laurie-Ann 027 9276368



Colonial Architecture



Stunningly renovated 3 brm Villa, wonderful 1,305m2 landscaped section, studio/art room, summer fale, garage. You'll be impressed \$PBN



* Two superbly positioned blocks set high above town * Great sea & rural views * Lot 2 - 6.25ha = \$690,000 & Lot 3 - 5.93ha = \$745,000



* Coromandel Seaview Motel Style B&B * 4 apartments + 3 brm home * Huge boat shed * Panoramic views * \$1,420,000 + GST (if any)



* One section back from the beautiful white sands of LITTLE BAY! * 1,193m2 section featuring re-growth bush and a small grassed area * A retro A-Frame style cottage (no bathroom) * Make this setting your future holiday destination * \$620,000



* In the heart of Papa-Aroha * 1,869m2 section ready for you to create a family holiday base * Bring the caravan/tents/kids/boats * \$295,000



* WOW!!! * 2 adjacent Titles combining approx 13ha in Papa-Aroha * Pasture, stream & large Pohutukawa * Come and explore * \$PBN



* House/Land package in Greenhills * 3 brms (master en-suite) * Open-plan living * Choose your own décor colour scheme * \$710,000

10 GREAT SALES last month... with more properties under contract
CONGRATULATIONS to all our Vendors and Purchasers ☺





Patchwork & Quilters

By Bev Mayhead

Coromandel
200 quilt in
progress

We are well underway now for 2020.

Our AGM has been held and our President is Raewyn Penrose for yet another year. She is such a great president for our group; thank you Raewyn. We have seven committee members in total.

We have an awesome line-up of activities and projects.

Jill has organised a Mystery Quilt for this year and we have 14 members doing this. It is called a mystery quilt because we don't know what we are making. Each month we are given a block to make, a pattern and a guideline. We have been told it is a Japanese theme. Some members choose not to do the mystery quilts simply because they like to know what they are making first. Not me though, I love a good surprise!

Our annual Big Day Out is yet to be decided and this is always a popular outing for the day, and will be held very soon.

Stitching has started on our Coromandel 200 quilt, many hands make light work.

New members are most welcome!

Our meetings are held on the 1st and 3rd Mondays of the month 9.30am-3.30pm at St John Rooms, Tiki Road, Coromandel. President Raewyn Penrose (07) 866 8880, Secretary Sharon Currie (07) 866 8762

Ann's Good News, Naturally

Your Family's Best Immunity

My great news is that at long last, there is now so much more awareness, that best immunity is not just about vaccinations.

Whether a contagious or climate induced condition is mild or life threatening depends on the strength of your immune system. Ideally starting at conception, we know immune quality depends on healthy sperm and egg, a pregnancy that provides essential nutrients, breast feeding, a beneficial gut flora, optimal Vitamin D levels and a nutritious diet providing minerals, vitamins, and molecular cofactors derived from real, unprocessed, nutrient dense food.

If you or your children are overweight or have a high fat mass, toxins from your processed foods or the environment lock into your fat cells, preventing immune efficiency.

When your constitution is strong, diseases from viruses and weather influences entering your body are completely warded off; if it is less strong, diseases may enter, bringing about a cold or flu infection. If your general health is very deficient (but may not be obvious), disease factors may penetrate into a much deeper level, more profoundly affecting the functioning of internal organs.

Your body's ability to absorb nutrients is critical to the immune function, as is its ability to utilise oxygen.

Your immune system's white blood cells circulate through the blood stream, protecting you from microorganisms entering any points of entry – mouth, nasal passages, skin pores, eyes, ears, anal and vaginal passages, etc.

However, in the last generation, allergies, degenerative diseases and other signs of poor immunity have reached epidemic proportions. There has been a deafening silence for too long.



cravings, itchy bottom? Is your diet feeding candida and weakening your immunity?

- Gut immunity – 80% of your immune system comes from the gut. Is yours leaky, sluggish or over-reactive?
- Detox and excretory organs optimal? Or are the toxins building up in your fat cells?
- Poor oxygenation – Suffering from snoring, sleep apnoea, shallow breathing? Immune cells need oxygen replacement through the night.
- Chemical cleaners and sanitizers – more toxins.
- Stress – Join the gym, go to yoga. Take time out.

Protect your family from airborne viruses

Be confident with your health decisions. I can help personalise your prescription:

- Potent Immune Specific Medicinal Molecules, via "Practitioner Only" superior quality Nutritional Supplements.
- Potent Microbiome Boosters – Know which probiotic suits you.
- Potent Herbal Throat Spray
- Potent Herbal Immune Booster Tonic
- Potent Immune Boosting Family Food/Menu Plan/Food Guide
- Immune Boosting Specific Food Guide

Mineral status – How is yours? Whether the infection be viral, bacterial or fungal, there are specific minerals essential for treatment and prevention of each.

www.activeelements.com User name: 259077. Password: 579819

Live Blood Screening – NOTE – A virus can cause illness and death only if you are immune compromised. How nourished are your white blood cells, your immune system? Book now and check also for candida, viruses, nutrient and essential fatty acid deficiencies, blood cell membrane quality.

More good news:

- Antibiotic resistance issues, sore itchy skin, auto immune polymyalgia rheumatica. After being on my programme for seven months, this 72-yr-old man is healed.
- Chronic fatigue, sore muscles, gout, not depression. The last straw was being prescribed antidepressants by his doctor. He wasn't depressed, he was frustrated his illness hadn't been identified and he wasn't getting better, until he came to see me. This 56-yr-old man is telling everyone my naturopathic treatment "saved his life".

Contact Ann Kerr-Bell on 021 046 1647

Contributing to these conditions are:

- A diet saturated with overprocessed and undernourished dead food.
- Candida overgrowth – Do you have fungal toenails, itchy skin, sugar



COROMANDEL MARINE ENGINEERING

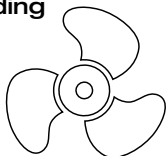
MARINE ENGINEERING & OUTBOARD SERVICING

- All makes, model & inboards serviced.
- Full computer diagnostics available.
- New & second-hand outboards for sale.
- Retailers for marine products – inc batteries, oils, plugs, Saltaway products.
- Aluminium & stainless welding by Certified Welders.



Telephone
Workshop/office:
07 866 8004

Grant: 028 2580 2351
Jackson: 021 059 7542



116, The 309 Road, Coromandel – 1km from the main road.

Natural Medical Centre

The natural alternative for all your health requirements

At Tiki House,
Coromandel.

For appointments,
phone or text: 021 046 1647
or email: annk-b@ps.gen.nz

www.naturalmedicalcentre.co.nz

Ann Kerr-Bell

B.Hlth.Sc. (Comp.Med.)
Adv.Dip.Naturopathy
Adv.Dip.Med.Herb. MNZAMH
Naturopath
Medical Herbalist
Nutritionist
Massage Therapist

Library News

By Robynne Jones

Can't believe we are heading into autumn already and in the library we are starting to make progress on the conversion to the new Library System. By the time you read this we will have the computers installed and will have made some progress towards barcoding a lot of the books in the library. There are over 15,000 books so this will take us a while. In the meantime, I thought it would be a good time to let the members know what to expect. For a start, we will be issuing every member with their own library card, and you will see that each book will have its own barcode sticker on the front of the book. In this way when you come in to the library, we can scan your card, bring up your membership details on the computer and log books in and out for you. The computer will also keep the details of all of the books that you have read for the last few years. You will be able use a computer to look this up for yourself, or you can ask the librarian to bring up these details on the computer for you. However, for a while, at least until we are happy with the transfer to the new system, we will be running the new system in tandem with the old one. The cards will still be in the back of the books for you to see if you have already read that book. I hope that gives you an idea of what to expect in the future, but should you have any questions about the new system just come in and we can have a chat.

Some new books arrived in February and we have a few new authors and some new issues from the popular authors like Danielle Steel and James Patterson, and a new one from a local author Stephanie Parkyn. Here are a couple of suggestions:

***The Queen's Tiger*, by Peter Watt**

This is book two of the series.

It is 1857. Colonial India is a simmering volcano of nationalism about to erupt. Army surgeon Peter Campbell and his wife Alice, in India on their honeymoon, have no idea that they are about to be swept up in the chaos.

Ian Steele, known to all as Captain Samuel Forbes, is fighting for Queen and country in Persia. A world away, the real Samuel Forbes is planning to return to London – with potentially disastrous consequences for Samuel and Ian both.

Then Ian is posted to India, but not before a brief return to England and a reunion with the woman he loves. In India he renews his friendship with Peter Campbell, and discovers that Alice has taken on a most unlikely role. Together they face the enemy and the terrible deprivations and savagery of war – and then Ian receives news from London that crushes all of his hopes...

***Braised Pork*, by An Yu**

An Yu's debut novel *Braised Pork* starts with the grotesque death of businessman Chen Hang in his Beijing apartment. His young wife Jia discovers him drowned in a half-filled bath, face down and his rump sticking out from the water. Next to him is a

piece of folded paper, a sketch of a strange creature from his dream. He has left her no other sign. Young and alone, with many unanswered questions, Jia sets out on a journey. It takes her deep into her past, where for the first time, she begins to have a sense of her future.

Gotta Get Theroux This, Louis Theroux – my Life and Strange Times in Television

Louis takes us on a humorous journey from his anxiety prone childhood to his unexpectedly successful career in television starting at the BBC. He has gone on to create his own award-winning documentary style that has seen him immersed in the weird worlds of paranoid US militias and the secretive world of pro wrestlers, get under the skin of celebrities and tackle gang culture in San Quentin prison. The book is filled with wry observation and self-deprecating humour.

St John

First Aid Course

St John Coromandel are running a Workplace First Aid Certificate on **24 March**.

Maximum of 20 names.

The cost is \$95.00 (normally \$169.00). Needs to be paid when confirming your booking please. First in, first served.

Phone or email station to register your interest (07) 866 8279, station38@stjohn.org.nz



St John
first to care

Coromandel Players present

Jim Davis in

The Daylight Atheist

by Tom Scott

**A FUNNY, FIERCE AND
PROFOUNDLY MOVING PLAY**

**ADULTS ONLY,
COARSE LANGUAGE**

Friday 20th, Saturday 21st,
Friday 27th, Saturday 28th

March

All performances at 7.30pm
Hauraki House Theatre, Coromandel

Tickets: Coromandel Town Information Centre \$20

By arrangement
with Playmarket

NEW ZEALAND PLAYWRIGHTS
PLAYMARKET
AGENT. ADVISOR. BOOKSHOP

Coromandel Independent Living Trust

Coromandel Independent Living Trust

What a hot and dry summer it's been! We are fully back to work now after a bit of a slow start to the year. We are excited to continue to deliver over 15 projects that help to improve the lives of people in the upper Coromandel.

By developing projects that address needs in our community, based around the focus areas of Rural Isolation; Digital Connectivity; Disability Support; Care for the Environment; Whanau and Community Support and Education, we can have a lasting positive impact on the wellbeing of people right across the district. We are really proud of the results of our programmes so far. For example, in 2019 there were 14 people regularly attending Artists in the Making in Whitianga – a day programme for people with a disability. They create mosaics, learn skills such as screen-printing, and socialise in a supportive environment. Over 5,000 people have used our new fast and free Wi-Fi network in town, and in 2019 we helped fund travel costs for people to attend over 700 hospital appointments in Thames and Hamilton.

The Bizarre – Reduce, Reuse, Recycle

The Bizarre continues to be a busy hive of

activity. Most days the shop is full of people looking to find good quality used goods. If you are after some summer reading, there's a fantastic range of books to browse; also plenty of plates, crockery and cutlery to kit out your kitchen. Also check out the Goldmine, which has a great supply of larger items and interesting building materials.

Volunteers

A big thank you to all of our volunteers who continue to give their time to the benefit of the wider community. We currently have 29 volunteers doing great work making a positive difference in people's lives – including driving people to hospital appointments out of town, taking pensioners on fun outings, helping out at The Bizarre, and sometimes making scones!

If you have spare time, even just for a couple of hours per week, and would like to be a part of our volunteer team, we would love to have you on board – we are particularly looking for helpers at The Bizarre. If you are interested or would like more information on volunteering please contact Rochelle at the Resource Centre (07) 866 8358.

Elderly Survey

We are really fortunate to have received a grant from the Office for Seniors to undertake an Age Friendly Community Assessment. The purpose of the assessment is to improve the lives of older people in the Colville/Coromandel ward.

Luana Johnson has started surveying

Coromandel/Colville ward residents aged 55 years and over to evaluate how our communities are addressing needs and preparing for the future with a focus on the wellbeing of older people. CILT would like to ensure we consult a large cross-section of the ward. If you fit into this demographic we encourage you to partake in the survey. You can register your details with CILT on (07) 866 8358 or directly with Luana on 027 473 6494.

Coromandel Community Services Trust Van

A reminder that the community van travels weekly on a Thursday to Thames. This is a door to door service, great for your medical/dental appointments, shopping or just catching up with friends. This service is for anyone to use.

On **Saturday 14 March** the community van will be doing a special trip to Whitianga to experience the Mercury Bay Art Escape – you will have the opportunity to visit Artists' Open Studios and check out some of the creative talent the area has to offer or if this is not your "cup of tea" just hang out or do some shopping in Whitianga. Leaving Coromandel at 9.30am, returning at 2pm.

He aha te mea nui o te ao.

What is the most important thing in the world?

He tangata, he tangata, he tangata.

It is the people, it is the people, it is the people

Coromandel 200**A Ball! The Sailors and Loggers Ball!**

30 May, Coromandel Citizens' Hall

Preparations are well underway for some fun this Queen's Birthday weekend!

A band has been hired, a seven-piece band called the Celtic Flyers, supper has been ordered from Umu, bar staff hired and decorations for the hall are being planned.

All we need now is people who want to have fun!

Tickets are on sale now at Coromandel Town Information Centre, \$30pp.

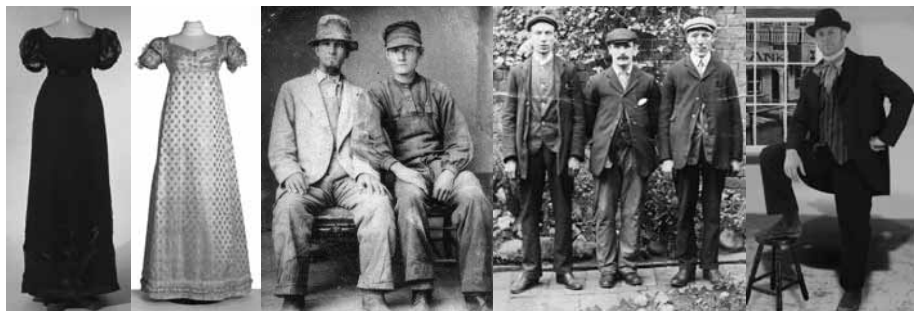
The catch? We would really love you to dress the part, whether you feel like dressing up or down! There are lots of ideas online, no need to be too fussy about being

exactly authentic, after all, the main aim is to enjoy ourselves. So, to help out, we will be bringing a load of suitable costumes up from Thames, and will make these available about two weeks before the event. This will be advertised a little closer to the time.

Meanwhile, most \$2 shops sell braces and bow ties for men. It doesn't take much to get into the spirit of the event!

For any further info please call
Liz 027 494 1188

Some costume ideas are pictured below

**Coromandel Accommodation - Super Property Managers!!**

- * Airbnb Super Hosts!!
 - * Booking.com 9.3 Rating!!
 - * Bookabach Award
- Winning Holiday Homes!!**



- Long Term Rentals**
- Holiday Homes**
- Luxury Apartments**
- Cleaning & Linen**

Let us handle your tenants, your online bookings, your property maintenance, your stress!

265 Kapanga Rd, Coromandel

07 8668803

0274 361729

office@accommodationcoromandel.co.nz

100% Coro Ltd

Coromandel Lions

By Lion Lyn



Once again, my fault for no report on last month – I got involved with a project then simply forgot! It must be time for someone else to take over.

Due to the illnesses, accidents, and bereavements our club has to deal with, it is no wonder that many were not available to celebrate the return to the second half of our year; hence no celebratory BBQ. Instead we will endeavour to have a Midwinter Xmas Dinner, June perhaps, as this should be a quieter time for most. This is a long time away – three more business meetings after this week (I write this on 17 Feb).

On to club news – there have been a couple of working bees with cutting, splitting and deliveries, and as you know the best place to store wood is yours; and a great time to do this is now! As we are all volunteers we don't really want to be doing this in the middle of winter, so getting in early would be a good plan.

At the Keltic Fair we had a good, steady trade, with people still coming for fritters long after we were cleaning up. That has to be a good recommendation for the Lions fritters.

As always if there is a community project that we can lend a hand with, please give a Lion a call. If you would like to learn more about being involved with Lions, you can visit the website, or contact any of our numbers below.

Cheers for now – keep safe!

President Lyn (07) 866 7722 (may go to answer phone); leave clear phone number and short message please, and I will get back to you; secretary Gordon (07) 866 2433; firewood Sue 07 211 9774 (landline)

Colville Easter Festival 10-13 April

Plans are well underway for the Colville Easter Festival. Remember tickets are essential, available online at www.colvilleartsfestival.co.nz, Richardsons in Coromandel Town and Colville General Store.

Ticket price this year is \$25 per night or \$60 for the three nights for early birds, until 1 April.

Programme

Good Friday Night (10 April)

7.30pm – Colville Sings Country – Colville Hall. Adult event only (16+). Tea, coffee and cakes provided at half time. Dress-up prizes for best cowboy and cowgirl. Vouchers for meals available at Umu and The Forager's Kitchen.

Saturday 11 April

6pm – The Big Music Night – Colville Hall. Children under 16 free entry. Hot Diggity – all female five piece bluegrass band. DJ Doc Westie – Remixed tunes for sophisticated hoons. Mini Simmons – Blues-Rock band capturing the stomping swing of wild 70's, with a bit of fresh energy. And... Labretta Suede & The Motel 6 – a performance not to be missed. Meals available to purchase – cash only.

Sunday 12 April

- 5-6pm – Kids' Disco with DJ Jamie, \$5 entry, this includes a meal for the children.
- Sunday Night 6pm – Colville Hall. Children under 16 free entry. Kiwi Comedy with Kim Potter – International award winning comedy entertainment (this is total comedy entertainment at its best). HERBS – The Movie, latest release.

Once again we'd like to make the Easter Festival a low alcohol event. No boxes or bottle of spirits will be allowed in hall, thank you.

Cafes: Hereford 'n a Pickle and The Forager's Kitchen will be open all weekend.

Workshops

Saturday 11 April

- Graffiti with Dan Tippet – Outside Colville Store/Cafe, \$20 adult/\$15 teens (14-18), 11am-3pm.
- Contra Dance with Dr Leonard Bloksberg – Colville Memorial Hall, \$20, 1-3pm.

Sunday 12 April

- Contra Music with Thayra Blaom Colville Memorial Hall, \$20, 11am-1pm.
- T Shirt Painting Party with Greer Rasmussen. T shirts provided for children. Adults welcome – bring your own tshirt – Colville Hall Grounds, \$10 Child, \$15 Adult, 11am-1pm.
- Graffiti with Dan Tippet – Outside Colville Store/Cafe, \$20 adult/\$15 teens (14-18), 11am-3pm.

Monday 13 April

- Clay Creations – with Caitlin Moloney and Frederick Church – clay and tutors contributed by Driving Creek Railway – Colville Hall Grounds, koha, 10-12pm.
- Needle Felting with Denise Jones – Colville Hall, \$25 – materials provided and a kit to take home – age 12+ 10am-12pm.

More info: www.colvilleartsfestival.co.nz. CSSC (07) 866 6920, Ella 027 487 5131, Steve 021 711 489. If anyone interested in displaying a sculpture please contact Steve 021 711 489



Purnell

LAWYERS

BRENDA FLAY, SOLICITOR:

Travels to Coromandel on Tuesdays.

Please phone the Thames Office (868 8680) for appointments.

PARTNERS: Hayley Green and Brenda Flay

THAMES OFFICE: 611 Mackay Street, P.O. Box 31, Thames

PHONE: 868 8680 **EMAIL:** info@purnell.nz

COROMANDEL OFFICE: Tiki House, Tiki Road

OUR SERVICES

ESTATE PLANNING / PROPERTY / COMMERCIAL

www.purnell.nz

THAMES

WHITIANGA

COROMANDEL



Driving Creek

Coromandel - New Zealand

Rail tours

At the following times until 1 May:

9.00am, 10.15am, 11.30am, 12.45pm,
2.00pm, 3.15pm, 4.30pm and 5.45pm

(please ensure that you arrive
20 mins prior to departure time)

Bookings advisable

Phone 07 866 8703 or 0800 DC RAIL

Email: bookings@dcrail.nz www.dcrail.nz

380 Driving Creek Road, Coromandel 3506

CLOSE TO BEACH



Te Kouma - A Treat in Te Kouma

Open plan kitchen/living, 3 bedrooms and two additional rooms to use as you please, this lovely home has all the space you've been looking for. Some water views and nicely situated for the sun. Double garage and room for the bigger boat at the front of the 1361m2 section.

For Sale \$791,000
www.harcourts.co.nz/CO1906

PRIVACY



Coromandel—Two Perfect Hectares

Driveway access plus power and phone line to site, this magical spot has a generous proportion of flat land, grass platforms, beautiful bush surrounding you and an established orchard.

For Sale \$559,000
www.harcourts.co.nz/CO1904

HOME/INCOME



Coromandel - Luxury Accommodation Bush Retreat

Driving Creek Villas are well known for their outstanding Coromandel luxury Accommodation. Nestled amongst the native gardens these 3 Villas are a great hideaway, great for families also a favourite with couples who want their own uninterrupted space. All three Villas are fully furnished, all with air-conditioning with beautiful large open plan kitchens/dining and lounges. You could use one as your own home or operate all three villas as is. A complete furniture and sundries package comes with your purchase.

For Sale \$1,550,000 +GST (if any)
www.harcourts.co.nz/CO1913

SECTION



Coromandel—Look at that Sea View

This is a never to be repeated opportunity to own along this part of the foreshore. Nearly an acre of flat ground near to the water just 4 minutes drive from Coromandel Town. With its own title, driveway access and power and phone to the building site it's all ready for your dream home.

For Sale \$445,000
www.harcourts.co.nz/CO1922

Free Appraisals
 Free Advice
 Open 7 Days

Talk to us About
 Getting Your Property

SOLD!

Fact: Every 10 minutes
 someone buys a
 property with Harcourts

COMMERCIAL



Coromandel - Town Centre

- 2150sqm section
- Zoned Commercial
- 2 Titles
- Full services to fence
- 35m of Wharf Road frontage

For Sale \$750,000 +GST (if any)
www.harcourts.co.nz/CO1916

BUSH BLOCKS



Colville—3 Titles—Buy One or All

\$839,000 for all or enquire for separate title prices.
 This stunning bush and pine block is just north of Colville. Peace, privacy, hunting at your doorstep and genuinely majestic views to die for.

For Sale \$839,000+GST (if any)
www.harcourts.co.nz/CO3854

NZ's Most Trusted Real Estate Agency

2013, 2014, 2015, 2016, 2017, 2018 & 2019 (Readers Digest Annual Business Survey)



LIFESTYLE



Manaia - Live The Goodlife!

Live the dream on this 12.5-hectare old world bush clad lifestyle property. Located just 9km from Coromandel township and Te Kouma. This property is a must see, it has a whole lot more to offer, beautiful bush, sea views, and lots of possibilities...

For Sale \$699,000
www.harcourts.co.nz/CO1907

LIFESTYLE



Coromandel - Paradise Found

Set on 25 Acres of native bush on the Te Kouma Hill this is a truly special place! Beautifully presented home offering 3 double bedrooms with modern open plan living. Wood burner to keep you cosy in winter and lots of indoor outdoor flow onto expansive decks for summer living and entertaining. Breathe in your private view out to mighty Rata and Kauri. Close proximity to Coromandel Township, Te Kouma Boat Ramp and Auckland Ferry.

For Sale Price By Negotiation
www.harcourts.co.nz/MAE4598



SECTION



Coromandel—Seaview's & Sunsets

This 809m2 south-west sloping section is situated about 4km's from Coro Town at Kikowhakarere Bay. Beautiful views over the bay to the coastline and classic green, bush clad hills surround the bay. The closest boat ramp is about 2.5km north at idyllic Oamaru Bay. No covenants.

For Sale \$325,000
www.harcourts.co.nz/CO1897

SEA VIEWS



Colville— Off Grid & On Point...

Captivating Colville lifestyle block, 5 mins north of Colville comprises 27.55ha of native bush and pine and a substantial 4 bedroom, 3 bathroom home. There are spectacular views of Waikawau Bay and out to Cuvier Island, wonderful peace, seclusion & privacy.

For Sale \$979,000+GST (if any)
www.harcourts.co.nz/CO3857



LIFESTYLE



The 309 Road - Close to Whitianga

This delightful 1.0577ha property is handy to Whitianga, Riverlee Early Learning Centre, on the tar seal, and private. There is a swimming hole just across the road, plenty of space on the lawn for boats, tents and camper vans, and enough land to graze a few sheep.

For Sale \$614,000
www.harcourts.co.nz/WI21464

HOME/INCOME



Coromandel— 4 Bedroom Home 4 Separate Units

Use the units for holiday accomm or for family and friends. This 4 bedroom brick & tile home with ensuite & office sits on 5,559m2 of beautifully landscaped grounds & a good sized, well fenced paddock. Internal access double garaging & extra shed. The 4 brick & tile units come with chattels intact. Everything you need to be earning income as soon as you move in.

For Sale \$1,350,000 +GST (if any)
www.harcourts.co.nz/CO1918



Caro
Sales
021 0291 5531



Raewyn
Sales
021 0201 9111



Don
Sales
022 453 2188



Maria
Sales
022 0815 817



Anna
Sales/Office
022 584 6065

Community buys into harbour and catchment plan

It takes a community to develop a harbour and catchment management plan.

Waikato Regional Council has just finished its community engagement for a harbour and catchment management plan for Coromandel/Manaia, bringing together people from all walks of life to share their ideas for the wellbeing and environmental health of their catchment.

The regional council met with iwi representatives, invited ratepayers and residents to a drop-in day in Coromandel in October. Surveys and a newsletter were sent out to every ratepayer in the catchment, a biodiversity workshop was held for volunteer environmental groups, a workshop was held for rural landowners, and representatives from Thames-Coromandel District Council, the Department of Conservation, farming, fishing and forestry industries and tertiary institutions, among others, shared their local and technical knowledge.

Dr Kate James, an environmental scientist who attended the biodiversity workshop, says the bringing together of all of the different people is "super important" for the development of the plan.

"Everyone thinks differently, and we're all involved in our community in different ways.

"I think a really important thing is to link properties and landowners and larger estate holders to work toward common goals, so all of these great projects that are already happening in the Coromandel don't stand alone. Waikato Regional Council is on top of that."

Kate says it's always a balancing act for large landowners to run stock and keep their property healthy, and "it's great to have the council on board to help with that".

"Education is a really big part of this. By sharing success stories, it inspires others to do the same.

"Even if you just have a small property, you're part of this and that just makes it easier to manage. Maybe you just start with one rat trap and one nice flowering native tree to attract wildlife to your garden. It's about collectively building on what we already have to keep our environment healthy."

Harbour and catchment advisor Emily O'Donnell says engaging with residents and landowners helps the regional council understand what condition the catchment is in and where work needs to be done.

"From this we develop the plan which will identify and prioritise what catchment works we can do with landowners to improve water quality and the environment."

The Big Dry

By Catherine Delahunty

I really hope that it has rained properly by the time this column has been printed. Right now we are in a drought that seems to be intensifying. Our river water is disappearing every day. Every day the tank level is dropping and the garden dies a little more. Some people go through this every summer but we are not used to springs drying up and grass turning gold and dying. It is not too hard to reuse shower water on the garden and turn taps off but it's very hard on the animals and plants who are used to green, lush summer pasture and creeks full of water, soil that is soft, not cracked and dry. I remember when I was young living at Te Whau Point at Colville I used to carry all my water in the summer and swim in the sea every day. It was exotic for a while. But I had no kids, perfect health and very little washing up. Now this weather is causing me to reflect on the value of water.

When I was an MP one of my portfolios was clean water. I travelled from the deep south to the far north looking at rivers and it was a shocking experience. The combination of sewage discharges, dairy effluent, nitrates and fertiliser leachate, has had a devastating effect on the water quality and then there are effects of irrigation and water bottling on the aquifers that feed the rivers. The northern Hauraki/Coromandel rivers have been impacted by forestry which all too often allows its waste slash and sediment from land disturbance to wash into rivers and thus into harbours. The rich coastal wetlands, once incubators for fish life, have too often been drained and turned into paddocks. McGregor Bay in Coromandel Harbour is an example of our lack of respect for what people still call "swamps" as if they were a bad thing. Wetlands, waterways and native plants like manuka (or "scrub" as it is sometimes still pejoratively described) are so crucial to the health of the ecosystem and the health of fresh water, fisheries and the coast.

Alien beings from other planets, if they ever turn up, will be astonished by our planet's history, how we (the western corporate consumer culture) turned a beautiful blue-green paradise that provided all life with air, water and food, into a chaotic battle zone with mass extinctions and dirty water. Possibly they are watching from afar and deciding not to drop by for a visit until we have grown up. This could be some centuries in the future.

I have been reflecting on the history of my own life while writing a play with my sister which we are performing in the Auckland and Wellington fringe festivals very soon. This has been an opportunity to reflect on the life of some young women in the 60s, decorative objects not active subjects. In the early 1970s I escaped the city to live in Colville and learned so much about myself as well as the environment. I will never regret the years of being a hippie learning to grow kumara and appreciate whenua. The coastal lands of the northern Coromandel, which are now covered in green forest, are a tribute to our lack of drive to clear "scrub" and plant pine trees. It was also a place where I grew up and started using inherited political organising skills but less based on urban causes, more grounded in the sense of place and Te Tiriti issues I was learning about.

It's been a privilege to defend this place from mining with so many great people, and it's not over but it's sobering to look at the bigger picture of climate chaos caused by extractive addiction on yet another very dry, hot day, while others clean up floods. The big dry, the great rain, I am expecting a plague of locusts next. Hopefully they are edible.

Chartered Accountants

The Hauraki Taxation Service Limited

- ▶ For out of town independent accounting advice
- ▶ Established 1982
- ▶ Approved agents for Inland Revenue Department
- ▶ Offices in Coromandel Town & Thames



95 Kapanga Road, Coromandel
Ph/Fax: 07 866-8660
Em: coro@haurakitaxation.co.nz

WANT

NATIVE NURSERY & EDIBLES
WAITAIA RD, KUAOTUNU

A wide range of beautiful natives,
palms and fruit trees.

Potting mix, compost, mulch, chook manure.

Open Thursday- Sunday 8.30-4.30 or by phone appointment

Please phone Colin Hill 07 869 5910

Animal Rescue Thames

By Alice and John Parris

Thank mews to everyone who has supported our rescue kitties with the donations of food for the rescue cats. It is truly appreciated as we are still running status quo and on the same tight budget.

Homed – our classified on TradeMe has been running for eons, but we persevere with it and just let it tick along and roll over. To actually get an enquiry let alone anything homed is really a 1% hit rate, however we are blissfully hopeful. We had one enquiry from Cambridge in regard to Neeva and Fuzzles – we carefully explained about the 3 year old cats, natures and everything else we knew they needed to know and also told them of our Marda the grey 'n white mum cat who came in over a year ago with a belly full of paws. She had her babies, they got homed and she was spayed. Most enquirers never show up but I am prepared and had the paperwork done and ready just in case this Cambridge lady came at 3pm.

Shock horror at 2pm car pulls up, out come new cat cages and lady asks us to get the cats for her and no she didn't need to view beforehand and she queried the cost of two and the cost of three, which I said was actually no different. A loving forever farm home was paramount to costs of rehoming, as we can never recover the costs of the animals who have been here longerterm and in care for over three years. We said our farewells to the



cats, gave her the paperwork and watched as Neeva, Fuzzles and Marda were put carefully in their cages. We were so comfortable with this lady because she had tamed feral kittens in the South Island and adored cats and our trio just quietly watched her and never hid so we knew this was kitty leaving day. The trio have a 100 hectare property to call their own now, new people and once adjusted to that lot there is outdoors, grass, mouse patrol and all those kitty wonders that they would have always dreamed of. These homes and people are few and far between.

Newbies – The Coro kittens are hard case. Where they used to adore to see us in the morning for cuddles, pats and play, they are now big kids that play with the older rescue kitties. They mix, they mingle, and they go trash older kitty pens and units, nick their food as it's better than theirs and generally do kitten capers. Yes we had forgotten how awful kitten capers can be. Our elders don't totally hate them, just avoid being around them.

Naughty, naughty Mascara is our black girl who has a totally awful attitude against poor Miss Minime and one day chased her outside. Miss Minime is our senior member

of longterm care here. She is nine years old, lives indoors, never been outside – her choice as she is still only size of a six-month kitten – but is the matriach with a red head attitude.

One day we couldn't locate Minime, and spent three days turning the entire house upside down, as she is a brat cat, gets into smallest spaces, hides, listens with totally deaf ears, no Minime. I got home from being out, was backing up car and got out and saw a ginger flash in the carport, Mini Meeeeeeeee. We had one deeply scared ginger cat outside. After hours of sitting, calling met with deaf ears. I set the trap and said prayers. Next morning I ambled down at 6am to see the result and thank goodness cage had tripped off and trapped one ginger cat. To say we were all relieved is an understatement. Took Miss Minime three days of eat and sleep to get over it. The joys of being owned by cats.

We also have power bills that have escalated due to fans in all rooms with animals (and humans). Each area has fans to ensure the cats are at very comfortable, cool temperatures. Also ice cubes are somewhat fun for the cats to pat around the bowls; novelty fun as long as they don't lick the cube!

Wanted – cat and kitten food, mainly tinned, kitty litter, and homes for our rescue kitties.

Meow furr now.

All enquiries to Animal Rescue Thames, 532 Thames Coast Road, RD 5, Thames 3575

COROMANDEL & AUCKLAND FERRY

valid to 5 April 2020

Departs Auckland: Pier 4, Quay Street

	M	T	W	T	F	S	S
28 Oct - 03 Nov	8:45 am	8:45 am	-	8:45 am	6:40 pm	8:45 am	8:45 am
04 Nov - 22 Dec	-	8:45 am	-	8:45 am	6:40 pm	8:45 am	8:45 am
23 Dec - 29 Dec*	8:45 am	8:45 am	*	8:45 am	8:45 am	8:45 am	8:45 am
30 Dec - 5 Jan	8:45 am	8:45 am	8:45 am	8:45 am	8:45 am	8:45 am	8:45 am
6 Jan - 9 Feb	8:45 am	8:45 am	8:45 am	8:45 am	6:40 pm	8:45 am	8:45 am
10 Feb - 5 Apr	-	8:45 am	-	8:45 am	6:40 pm	8:45 am	8:45 am

Departs Coromandel: Hannafords Wharf

	M	T	W	T	F	S	S
28 Oct - 03 Nov	4:30 pm	3:00 pm	-	3:00 pm	8:45 pm	4:30 pm	4:30 pm
04 Nov - 22 Dec	-	3:00 pm	-	3:00 pm	8:45 pm	4:30 pm	4:30 pm
23 Dec - 29 Dec*	3:00 pm	3:00 pm	*	4:30 pm	3:00 pm	4:30 pm	4:30 pm
30 Dec - 5 Jan	3:00 pm	3:00 pm	4:30 pm	4:30 pm	3:00 pm	4:30 pm	4:30 pm
6 Jan - 26 Jan	3:00 pm	3:00 pm	3:00 pm	3:00 pm	8:45 pm	4:30 pm	4:30 pm
27 Jan - 2 Feb ¹	4:30 pm ¹	3:00 pm	3:00 pm	3:00 pm	8:45 pm	4:30 pm	4:30 pm
3 Feb - 9 Feb	3:00 pm	3:00 pm	3:00 pm	4:30 pm	8:45 pm	4:30 pm	4:30 pm
10 Feb - 5 Apr	-	3:00 pm	-	3:00 pm	8:45 pm	4:30 pm	4:30 pm

Auckland - Coromandel

	ADULT	CHILD*	FAMILY*
ONE WAY	\$67.00	\$42.00	\$191.00
RETURN	\$103.00	\$65.00	\$292.00

*Child: 5-15 years inclusive | *Family: 2 adults + 2 children.

Travel Information

- › A ferry bus shuttle will transfer you to and from Coromandel Town (Samuel James Reserve car park) and Hannaford's Wharf. There is no additional fare for this service.
- › Advance bookings are advisable for all Fullers360 tours and bookable ferry services. **We recommend arriving 30 minutes prior to departure to check in.**
- › All departures and timetables are subject to change or cancellation due to weather or operational requirements. Prices in this brochure are correct at time of printing and inclusive of GST, and may change without notice. All travel on Fullers360 services and tours is subject to our full terms and conditions of travel, available online at fullers.co.nz.



SAVE TIME AND BOOK ONLINE!
fullers.co.nz | 09 367 9111

*No service on Christmas day, Boxing day is a Sunday service. ¹Auckland Anniversary Day Monday 27 January, delayed departure at 4:30 pm.

Fullers 360
EXPERIENCES & CRUISES

Grey Power Coromandel

By John Rabarts, President

March Grey Power Meeting

Hear about the new euthanasia legislation from Heather Major on **Thursday 5 March**, St John Rooms, Tiki Road, Coromandel. We gather at 1pm for meeting start at 1.30pm. Business then guest speaker. Afternoon tea at the end of the meeting. Members and any interested visitors welcome. Full Grey Power membership for over 50 years, but associate membership available for those who are younger and wish to take advantage of Grey Power benefits of cheaper power, gas, broadband, health insurance, fuel, Cook Strait ferries etc. Get information on these and more benefits at the meeting.

Plant Pest

Wild ginger, flowering this time of year, can be controlled and eliminated organically without using herbicides or other poison. Using a machete, flax knife or even a sharp long kitchen knife, cut the stems down low where they are soft and pink but above the lumpy rhizome ("root"). Make a high stack of the cuttings in a heap or a row just clear of the patch. Walk away and leave the patch for three to four months. You will come back to find many new stems sprouting from around the rhizome (but not where you previously cut). Trim these low down with knife or flax knife as before – making sure you don't cut pieces of rhizome as these will sprout in your heap of cuttings. You will find this second cut much quicker and easier. Walk away for another three to four months. Come back and repeat at the same interval over and over for the next two years. Every cut gets easier, quicker and you feel real progress! By this time you will see that the plant has virtually stopped making new green shoots, the rhizome is crinkling up and drying out with black powder holes throughout the plant which is now soft and mushy. The area where the patch is has nothing growing and the heaps of cut stems has shrunk to almost nothing with the seeds that might have been in the heap now not viable from the heat of compost. If you are on the edge of the bush the wild pigs will love rooting in your heaps of composting stems. I did this with some patches over 10 years ago. The ginger went and has never returned to the same area – although it is a good idea to check every six months or so and nip out any rare, small, straggling stems that have managed to grow. This may sound tedious but it soon becomes a rewarding routine task and you are undertaking an effective elimination of the ginger without poisoning the land. I find nikau, pohutukawa, puriri and other bush trees are released to grow in the cleared areas.

Join Grey Power Electricity

Switching is easy. We will contact your current supplier to organise the transfer of your account. This will take five to ten working days. Your current retailer will send you a final bill within two to three weeks. Your next electricity bill will be from Grey Power Electricity. You will not be billed twice for the same period and your power will not be switched off during this process. For a quote on what your savings can be phone freecall 0800 473 976 (have your current power bill handy when you call). Or e-mail joinus@greypowerelectricity.co.nz. Also ask about Grey Power Broadband – unlimited broadband and phone deals from \$68 per month.

Coromandel Grey Power membership is \$15 single member \$28 for two in same household. Phone Carol Carson, (07) 866 7172 to join

**SeniorNet**

By Loes Beaver

Another year has commenced for SeniorNet. We meet on Mondays at 4pm.

We notice that scans are still being sent and would remind members not to give personal details unless you are sure of who you are in contact with.

Within online banking, etc., it is good to know that we can help.

Members who have IT problems can drop in to see Tom any Monday afternoon. Bring along your laptop or mobile phone.

Contact Loes (07) 866 8053 for information regarding joining or any other queries

**CoroLocalLegend with Coromandel Four Square**

Congratulations to Auwa of Coromandel, who is the recipient of a gift hamper from Coromandel Four Square. Auwa has been nominated by Liz Grey who wrote, "Auwa is a lady with a busy business – but she still has the time in her tight schedule to go and help people. Whether it is cleaning for them, buying household goods that are needed (often at her own expense) or spending time with sick or lonely people. She truly is one of Coromandel's angels." Thanks for your community spirit Auwa, you are a true CoroLocalLegend!

Do you know someone who deserves recognition for their amazing community spirit?

Drop us a line telling us and they will receive acknowledgement in the Coromandel Town Chronicle as well as receiving a \$50 gift hamper from Coromandel Four Square.

Send your nominations to: Coromandel.foursquare@foodstuffs.co.nz (subject line: CoroLocalLegend) or post to: CoroLocalLegend, PO Box 5, Coromandel 3506. Kindly refrain from nominating family members



Auwa with Damian from Four Square

**Dial-up v Fibre Optic**

By Art Johnstone

As Sunday morn's Sweet summer light
Breaks the day
Download that sweet
Heavy relaxation
With Dial-up
And savour each the bite
Of a time-consuming
Sunday morning upload

Poetry
SPOT

**Coromandel Garage Ltd**

What we offer:

- Service and repairs on all makes and models
- WOF's
- Motorcycle WOF's

- Pensioner WOF's \$40
- Call out's & tow in's
- LPG bottle swap & filling
- Car & trailer hire

BP Card
Accepted

Best Value
for your money
with over 40 years of
combined experience
from our two
fully qualified
mechanics.

Coromandel Garage Ltd, 226 Wharf Rd, Coromandel. 07 866 8736

Proprietors: Darius and Hilary Visser

Coromandel Budget Advisory Service

By Caroline Dunn

Budget Advice

Hi all. Wow the year is truly underway now. February has been a funny mix of seeming quiet and busy all at the same time. There is always plenty to do behind the scenes to keep the cogs turning so we can keep providing a free budget mentoring service to whomever in the community needs our assistance. You don't need to be in financial hardship to make an appointment. If you want to get a financial plan together and create a weekly budget so you feel in control of your financial situation, we are more than happy to help.

If you want help with working on a budget, getting debt under control or have any other financial issues, please pop in to our office at Tiki House – we're here to help. It is free and totally confidential.

To make an appointment come and see us at our office in Tiki House, located opposite the BP, or call us on (07) 866 8351.

Opening hours are: Tuesday 9.30am-3pm, Wednesday 9.30am-3pm, Thursday 12pm-3pm.

Foodbank

Food parcel requests need to be in at the Budget Office by 12.30pm on Tuesday. Food parcels must be collected at 2.30pm on Wednesday. Please remember to bring your own bags/boxes if you are collecting a food parcel.

If you think you will require more than one parcel, please book in with one of our budgeting mentors to see how they can assist you.

Please keep donating any food items and excess garden produce. All clean, resealable jars and containers and reusable bags are also gratefully accepted by us on our mission to become single-use plastic-free this year.

Community Garden

It is the middle of February as I write this and hopefully by the time you read this we have had some much needed rain. Having a total watering ban in place has made it hard work getting the garden to produce fresh produce. On top of this, the amount of produce getting removed by others before we need to harvest it has made it a very tough couple of months for the couple of people who work hard to have it producing food for our weekly food parcels. On a positive note, we would like to say a massive thank you to Dawn Richards, who knew we were struggling as we had no water. She kindly delivered some by tank to the garden and gave the plants a water while she was there.

Here's hoping for sunny days, rainy nights and flourishing gardens.

If you have some spare time and would like to give us a helping hand, we would love to have you on board. Please drop into the Community Garden located behind the dairy on Glover Street on Wednesdays between 9am and 11am. Give Brooke a call at the Budget Office, or send a message via our Coromandel Community Garden Facebook page.

Mahamudra Centre for Universal Unity

By Jaki Chalmers

The Summer Program with Venerable Jamyang and with Venerable Khadro has come to a close. Gratitude and heartfelt thanks are extended to the two skilled teachers; those that have participated; the volunteers and the cook. Without these people Mahamudra wouldn't exist as it does today.

Outside of the teaching program, we celebrated Losar, the Tibetan New Year, on 24 February, followed by Lord Buddha's The 15 Days of Miracles, ending on **9 March** with Chotrul Duchen.

A very auspicious time on the Tibetan calendar and it has coincided with His Eminence Ling Rinpoche's teachings, **6-8 March**. HE Ling Rinpoche has given teachings and tantric initiations in many countries since 1991, in Asia, Europe, Canada, United States, Israel, Australia and Mongolia as well as Tibetan settlements throughout India and Nepal and now New Zealand. The weekend teaching program includes a Long Life White Tara teaching, The 37 Practices of a Bodhisattva and an Orange Manjushri Initiation ceremony. We are truly honoured to have such a presence visit us in the Coromandel.

In preparation we held a Working Bee on 22 February. A very big thank you to Amrit, the Centre manager, who led the project and all who helped; a fantastic job!

Between scheduled events we offer daily guided meditations at 8.30am (please contact us if you are unsure of the current program). A range of accommodation options are available through our website. We are also available for rental by compatible groups and organisations looking for an atmosphere for reflection, healing, and relaxation. Stay in touch by visiting and enjoying the grounds; subscribing to our mailing list www.mahamudra.org.nz or connecting with us on www.facebook.com/MahamudraCentre and www.instagram.com/dharmafpm/.

Coming up – Meditation weekends with Hedwig Bakker in April and May.

EXPRESSION OF INTEREST – COMMERCIAL ACTIVITY ON A COUNCIL RESERVE

www.tcdc.govt.nz



Thames-Coromandel District Council is currently seeking Expressions of Interest from businesses or individuals who wish to obtain a license to operate a commercial activity on a Council reserve, for a period of 2 years from the 1 July 2020 until 30 June 2022.

Please note there are only a limited number of spaces available on Council reserves for commercial activities, so it is important that you fill out the form correctly and provide all the information required.

The Expression of Interest and Application Form can be downloaded from the Thames-Coromandel District Council website using the following link:

<https://www.tcdc.govt.nz/Our-Services/Licences-and-Permits/Commercial-business-concessions/>

(On top right-hand side of the page).

Expressions of Interest will close at **4.00pm on 31 March 2020** - please note late applications **will not** be accepted.

The Expression of Interest and Application Form with all supporting information can be mailed to:

EOI Commercial Activities on Reserves

Thames-Coromandel District Council

Private Bag, Thames

or alternatively, email to: customer.services@tcdc.govt.nz

Any queries please call Customer Services on 07 868 0200.

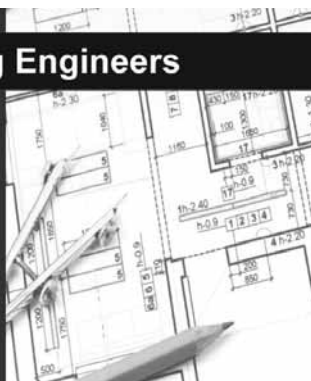
Rob Williams
CHIEF EXECUTIVE
for THAMES-COROMANDEL DISTRICT COUNCIL

Llandem Consulting Engineers

Derek Stewart
CP Eng MIPENZ

- Structural
- Civil
- Geotechnical

llandemengineering@gmail.com
(07) 866 6704
027 442 4234



Mana Update

By Jade Ferrière

Self-care is trending and while most of us are busy focusing on what we are eating, drinking and how often we are exercising, we at Mana are exploring what it means to care for ourselves, energetically.

Since everything is energy, the scope is broad. We are narrowing it down by focusing on what we are holding on to, and what we are putting out into the world.

Energy changes form constantly. We see this best in young children who can be sad one minute and joyful the next. The difficulty, as adults, is that we have a tendency to hold on to our thoughts, emotions and physical pain longer than necessary, and the energy that wants to transform to become something else, gets stuck.

When we get stuck –physically, mentally, emotionally, spiritually – our energy becomes denser, heavier. We can get caught up in a loop of complaining, criticising, blaming others, living in a state of disorder and worse, illness.

Self-care initiatives abound. Here are a few supportive events coming up that might help us to protect our energy and release whatever we may be holding onto:

- Start with the mind – Anna Grace is holding a series of Mindfulness-Awareness workshops in Coromandel. This is a beautiful opportunity to learn new skills and support ourselves as we face changes or difficulties in our lives and the world around us. Sessions will be held 2-4pm, **Wednesdays 11 & 25 March, 8 & 22 April** in the Anglican Hall.
- Create space for energy to move – join us for an Open Floor Dance Class. Simply show up and move with whatever is present: our creative minds, our tender hearts, our joys and excitements, our aches and pains. Every Tuesday either Coromandel Citizens' Hall or at Mana (see calendar).
- Tend to self-care – take time to rest from the outside world with a Cacao Ceremony and Women's Yoga Workshop to reconnect to your centre and sense of wellness. Join Rebecca and Jade at Mana, **Saturday 18 April**, 10am-2pm.
- Take a healing sound journey – join us at Mana for what promises to be a captivating shamanic evening with natural instruments, drums, native flutes and Taonga puoro (singing treasures) by Sika – **3 March** 7.30-9.30pm.

For more information on these community events visit www.manaretreat.com



Earth Building Course with South America's Top Tutor in Coromandel

By Joanna Pearsall

We all know the Coromandel hills are full of clay. With the rising costs of construction, this is a largely untapped resource that could reduce the cost of building. The buildings are beautiful and it's fun!

We are extremely lucky to have Jorge Belanko, Argentina's most experienced, widely renowned and innovative earth builder, coming to run a week-long course this March.

The course will cover a wide range of techniques (earth blocks, light earth, wattle and daub, infill, plastering, etc.), skills, materials and oven building. Each day will include six hours of practice and two hours of theory.

Participant numbers are strictly limited to 25. Jorge is retiring from teaching and is not likely to be teaching again in New Zealand.

The seven-day residential course will run **20-26 March** inclusive of food and basic accommodation at Waikawau Bay, Coromandel Peninsula.

For more information and to book visit www.gardentools.nz

Coromandel Town Information Centre

By Sandra Wilson, Manager



Yesterday was our first Flower and Produce Show, fundraising for the Information Centre. And what a fabulous day it was! See article on page 4.

Make a note in your diary: The next fundraiser for the centre this year will be the White Elephant Sale on **Saturday 24 October** at the Citizens' Hall. More info to follow later in the year.

Also, we are looking for volunteers. We have a few spaces available and need the right people. Volunteers typically work three hours a day, one day a week. Applications are available at the Information Centre.

Don't forget to send all of your guests, friends and family to the Information Centre to talk to us and make their bookings on various activities in the area and elsewhere, such as Driving Creek Railway and Zipline and The Waterworks, where we have the best deals. InterCity, ferries, trains, Hobbiton – you name it, we book it.

Have you taken our famous Boom, Bust & Beyond Tour yet? This 90-minute, guided, walking heritage tour of our town is available at 10.30am and 5.00pm daily, with a minimum of two people, for \$20 per adult. Other times may be available so come see us or give us a call and book now. Hear from you soon.



retreats
workshops
events

Mana Retreat Centre, Coromandel New Zealand

Book Online - manaretreat.com

3 MAR	Evening of Sound Healing with Sika
5-8 MAR	Mindful Breathing Teacher Training with Kat & Bodhi
11-14 MAR	Advanced Regeneration Secrets w/ Judy Satori
15-18 MAR	Physical Regeneration - Level III w/w Judy Satori
20-23 MAR	Biodynamic Osteopathy 7A w/ Robyn & Manuela
24 MAR	Autumn Equinox Women's Workshop w/ Jade & Lisa
27-29 MAR	Awaken and Inspire Weekend w/ Stella Goetz
2-5 APR	Finding Balance with Yoga w/ Denise Ferguson

COROMANDEL PLUMBING

(1986) LTD

1490 Tiki Road, Coromandel

CRAIG DUDSON

Phone/Fax 866 8814
027 482 1291



Plumbing, Drainlaying and Gasfitting

Museum News

By Raewyn McKinney

I trust everyone has noticed the new red buoy in front of the museum. We thank Rick Ward for removing the rust and painting the buoy for us. If anyone wishes to know more about this buoy, a sign will soon be installed to answer all questions. In the meantime, do call in when the museum is open and see the duty person for further information.

This month's profile is:

Hilda Hart (nee Inglis)

Hilda was born in the Anglican Vicarage on 11 February 1931. Her parents were Urquart Brand Inglis and Doris Annie Inglis. Her father moved from Dunedin to Coromandel to teach at the Coromandel School of Mines, which was established in 1886 in the building that now houses the museum. His first wife died, leaving him with three small children, so he searched for a housekeeper. Doris, newly arrived from England, answered the advertisement. Urquart and Doris soon married, and six more children eventually joined the family. Hilda attended Coromandel Public School. Towards the end of her school days, her father arranged for her to look after the children of the local doctor. Armed with a glowing reference from the doctor, she was able to enroll for nursing training at Middlemore Hospital. Sadly, her father died suddenly just as she started her training, and so, after 18 months in Auckland, Hilda returned to Coromandel to be with her mother. Luckily, she was able to get a position at the Coromandel Hospital, where she worked for around a year, before leaving to work in Simmons grocery store. In the meantime, Ernie Hart, who had been educated at St George's Convent School in Coromandel and then left town, had also returned to Coromandel. In the fullness of time, Ernie and Hilda were married in Auckland and started their married life there. After a couple of years in Auckland, following the birth of their first child, Ernie and Hilda returned to Coromandel. Ernie then went to work for his father at the newly established Hart's Garage, beside Furey's Creek. As a young mother in Coromandel, Hilda found everything was provided in the town. Her first child was born in Auckland, but the four children who followed were all born at the Coromandel Hospital. Although the family did have a car, Hilda used to walk everywhere, as she always had, and she was able to supply everything for her family locally. Milk was delivered daily from Kiwi Leggan's farm, and fruit and vegetables were grown at home. Coromandel Town had the hospital, doctor and school, plus grocery and general stores, a butcher, dentist, chemist, bank and Plunket rooms, as well as the local garage, of course.

Early on, Hilda and Ernie bought the house next to the School of Mines building, and lived there with their five children, and Hilda's mother for a time. Hilda and Ernie lived in the house for more than 60 years before moving to Phoenix House, where Ernie died in 2018.

After the School of Mines closed in 1926 the building had been used as a Public Works office and depot, and then, briefly, as a clothing factory after World War 2, but then remained empty until Gordon Allington started the museum, which continues to this day.

During March the museum is open from 1pm to 4pm every day and from 9.30am to 1pm on Thursdays



Doris & Urquart Inglis



Mō tātou o Hauraki
Affordable medical & wellness
services for everyone in our community

Te Korowai Hauora o Hauraki Coromandel Whānau Health Centre

Coronavirus common sense

Human coronaviruses are a large and diverse family of viruses which cause illness, including the common cold, in animals and humans.

Symptoms of coronavirus are similar to a range of other illnesses such as the flu and do not necessarily mean that you have it. These include fever, coughing and difficulty breathing, all of which can be also be attributed to other illnesses.

Note: *Anytime someone is having difficulty breathing they should contact their healthcare provider or ED department immediately.*

Commonsense precautions - also applicable to viruses such as the flu - should be maintained. This includes practicing good cough etiquette (maintaining distance, covering coughs and sneezes); washing hands for at least 20 seconds with soap & water and drying them thoroughly before eating or handling food; after using the toilet; coughing, sneezing, blowing your nose or wiping children's noses, and after caring for sick people. People should also avoid close contact with anyone displaying cold and flu-like symptoms, and should not travel if they have a fever or cough; are immunocompromised; have a chronic illness, or are regularly in close contact with anyone with such conditions.

If you think you may have been in contact with coronavirus, please let your clinic know **before** you present to the clinic so that you are not kept waiting with other patients.

The Ministry of Health has offered a dedicated, free phone number for people seeking coronavirus information and advice, self-isolation etc. The number is: 0800 358 5453 and is available 24 hours a day, 7 days a week. Interpreters available. International SIMs +64 9 358 5453

Te Korowai Hauora o Hauraki OPEN: Mon - Fri: 8.30am - 5pm



225 Kapanga Road,
Coromandel 3506
Ph (inc a/h): 07 866 8084
E: coromandel@korowai.co.nz
www.korowai.co.nz

Foot Clinic with Ruth Wells

Mar 19,
April 30

Rongōa Clinic

with Jo Shelford
Mar 5, 19

with Donna
Pritchard-Blunt
April 2, 16, 30

LK & JA GORDGE BRICK & BLOCK LAYERS

0274 949 573

07 866 8200

Laurie Gordge

Buddy10@xtra.co.nz

I have pride
in producing
work of high
quality in a
professional manner

PHONE NOW FOR:
BRICK AND BLOCK LAYING
CONCRETE REINSTATEMENT
STONE WORK
COBBLE LAYING
FOOTINGS
MAINTENANCE WORK
FIREPLACES
LETTERBOXES
FENCING

Licensed Building Practitioner

Rangatahi

CELEBRATING OUR CHILDREN



Coromandel Area School

By Jamie Leckie

Welcome back everyone. What a great start to Term 1. It has been full of swimming, sports, camps and getting to know each other ... we are ready for an EPIC year!

On 31 January we had an EPIC family day at school to welcome all of our new students, teachers, and whanau. It was also a time for students, teachers and families to get to know each other. Thank you to the parents who helped by cooking the sausage sizzle, serving ice creams and participating

COROMANDEL AREA SCHOOL



in the games. Thank you to the Coromandel Bowls Club for coming over to introduce our tamariki to lawn bowls. And "way to go" to our senior students who stepped up to support our young ones to get involved in all of the games! Such a fun way to start the year.

Coming up...

CAS Athletics Day Year 9-13 **Thursday 27 February**

CAS Cross Country (Coromandel Golf Club) Year 1-13 **Friday 8 May**

Term Dates

Term 1: **31 January to 9 April**

Term 2: **28 April to 3 July**

Term 3: **20 July to 25 September**

Term 4: **12 October to 16 December**

Communication

We endeavour to communicate as effectively and efficiently as possible in regard to all school matters. Please ensure you read all newsletters, notes home and check the website regularly to keep up to date with any information you may need to know. Please also check our official Facebook page. The name of the page is Coromandel Area School, so please "like" and "follow" us on the page to get instant and up to date information, photographs and updates on school achievements.

In the next article we will have an update on swimming sports, athletics and junior camp!

Coromandel Youth Group at Hauraki House

School Term Time Hours

Tuesday, Thursday & Friday 3pm-5pm.

Friday Night Social 6.30-8.30pm for students school yrs 6-9.

Sunday 1pm-4pm.

Coromandel Youth Group is for all children aged 5-15yrs, to socialise, do arts and crafts, hang out and play. Parents just fill out a membership form for each child attending. Please make a gold coin donation each session. Parents/guardians: please feel free to phone with child's expected time of arrival and departure as we can not take responsibility for children who don't sign in or for those who sign out early.

For more information call in or phone (07) 866 7061.

Along with the kind donations received, we would like to thank those that make this programme possible: Lottery Waikato, Trust Waikato, "Bizarre" Charitable Trust, COGS, D.V. Bryant Trust

Kiwi Can

Kia Ora koutou,

At the end of 2019 we farewelled Gemma and Jasmine, who are both moving on to other roles within CILT. Thank you ladies for your hard work and enthusiasm over the years that you have been with the programme. Kiwi Can welcomes two new leaders, Daina and Kana, who have stated Term One at full speed! Waitangi Day and primary school camp both fell on Thursdays when we usually have Kiwi Can, but our awesome tamariki have shown lots of resilience and versatility to catch up. Some classes have had to fit two weeks of lessons in one, or even had to have two classes in one lesson! They managed to get it all done with a great attitude! So far in Kiwi Can we have sorted everyone into our new formation lines: Kowhai, Kakariki, Kikorangi and Whero. We have also revealed our theme for the term "Positive Relationships" and our catchphrase "Being kind to those we know, will surely help our relationships grow". Throughout the term, Positive Relationships will be split up into three modules: Fairness and Fairplay, Leadership and Conflict Resolution.

We're looking forward to it!

Nga mihi nui,

Marlene, Brianna, Daina and Kana

The Coromandel Kiwi Can programme is managed by the Coromandel Independent Living Trust, officially sponsored by Sanford Ltd and supported by The Lion Foundation, CSSC (Colville Social Service Collective), Trust Waikato



PENINSULA ELECTRICAL SERVICES LTD

Commercial & Domestic Electrical Contractors



RAVINDER & SUE RAJ

Registered Electrical Inspector

P.O. Box 109

Coromandel

Telephone (07) 866 8166

Free Phone: 0800 4 Electrical (0800 435 328)

E-mail: ravinder@e3.net.nz

1750 S/H 25

Coromandel

Fax (07) 866 8162

Mobile (0274) 738 734



WWW.JAMESDRAINAGE.CO.NZ

Excavators | Tip Trucks | Bobcats | Auger & Chain digger hire
Skip Bins | STMS Services | Septic Tank Services | Portaloo Hire

1020 Tiki Road, Coromandel
p. (07) 866 8308
e. jamesdrainage@extra.co.nz

Sport



Coromandel Golf Club

By Lynne Fenwick



Winners of the Bob Riley Trophy

The 2020 season for the Golf Club opened on Saturday 8 February with players competing for the Bob Riley Trophy. The winning team was Peg McLean, Bruce Fitzpatrick and Bruce Wallace (plus 3), 2nd Raewyn Wallace, Ezy Kemp and Les O'Leary (even). A great day to start off the season.

Our annual Seafood Tournament, with a field of 30 players starting, was held on 1 February with the following results. Senior: Gross – Chris Fielding, Stableford – Craig Dudson. Junior Men: Gross – Graeme McCowan, Nett – Warren Taylor, Stableford – Richard Neal. Ladies: Gross – Raewyn Wallace, Nett – Elaine Everitt, Stableford – Christen Allen.

Ladies Club captain report

Some of the ladies have enjoyed various Christmas tournaments in December and come away with a few prizes. Well done ladies.

A few of the ladies and, I believe, men, enjoyed some coaching from Jenna Gainford, a very good coaching session, and we hope Jenna can make regular visits to help our golf.

A huge thank you to everyone who helped with our Christmas tournament and the Coromandel Hotel tournament. Both tournaments were a great success.

Ladies are continuing to play golf on Tuesdays and all are welcome to come and join in; this includes the men. Ladies' opening day was 11 February and we are looking forward to a great golfing year.

Club Days: Saturday Club Day 12.30pm

Tuesdays Ladies' Day 9.30am

Wednesday Mid-week 12.30pm

Visitors are welcome to join us on any of the above days.

Coromandel Croquet Club

By Kaye Anderson



In order to beat the heat we are continuing to meet at 8.45am Tuesdays and Fridays for a 9am start.

We often sacrifice our morning tea break, instead gulping down lots of water as we play so that games can finish by 11.

If you would like to try out the game of croquet and need more information, call Kaye on (07) 866 8968. Otherwise just come along on a Friday at 8.45am. The club is situated in Woollams Ave, next to the Bowling Club.



Whitianga Office: 21 Coghill Street
Andy 022 594 5958
whitianga@gdcgroup.co.nz

Thames Office: 516 Pollen Street
Tom 021 246 4673
thames@gdcgroup.co.nz
www.gdcgroup.co.nz

GEOTECHNICAL | CIVIL | STRUCTURAL | ENVIRONMENTAL | ARCHITECTURE | ENGINEERS

GDC Consultants offers you a wide range of services within the following areas:

- ✓ Earthquake assessments
 - ✓ Structural Engineering
 - ✓ Geotechnical Assessments
 - ✓ Subdivision Engineering
 - ✓ Architectural Design
 - ✓ Stormwater/ Wastewater design and modeling
 - ✓ Bridge Design
 - ✓ Traffic/ Safety Assessments
 - ✓ Road Pavement Design
- We are your local
Coromandel Peninsula
Engineers!**

Coromandel Recreational Fishing Club

By Allison Brown & CRFC Committee

Hope you have been enjoying the lovely hot weather we have been experiencing and have been able to get out on the water for some fishing.

The Anniversary Weekend Competition went very well with some good fish being weighed in. The best of all was a 18.920kg kingfish caught by Christy Benton.

The snapper winning the 1st, 2nd & 3rd prizes all weighed 6-6.3kg

Results for Anniversary Weekend Competition

Seniors:

Snapper: 1st Allen McNeil 6.330kg, 2nd Kevin Brett

6.030kg, 3rd Rob Davies 6.015kg

Kingfish: Christy Benton 18.920kg. Trevally: Carl Benton

0.840kg. Kahawai: Logan Davies 1.475kg.

Mystery Weight: 1.695kg Leanne Appleton.

Average Weight: 1.535kg Neville Atama.

Juniors:

Snapper: 1st Chelsey McNeil 1.640kg, 2nd Layke McNeil

1.340kg, 3rd Ila Falwasser 1.005kg.

Paore: Ruby Bromwich 1.315kg. Kahawai: Phoebe

Bromwich 1.350kg. Most Unusual: Ruby Bromwich – Fan

Worm

and Watermelon

Fish of the Month for January was snapper weighing 7.4kg – won by Kevin Brett

Fish of the Month for March is kahawai for club members.

As always – here's to tight lines.

Classy Chicks Women's Fishing Competition

Saturday 7 March. Entry Forms – available from Wyuna Studio or Fish & Dive. See advert below.

Email: coromandelfishingclub@gmail.com

Classy Chicks 2020

LADIES FISHING TOURNAMENT
running for over
16 years

**LOADS OF SPOT
PRIZES**

Categories:
Snapper, Kingfish,
Kahawai, Trevally, John Dory
and Mystery Weight.

**Travel voucher
\$1500 major
sponsored prize
for Average Weight.**

**FLIGHT
CENTRE
THAMES**

Best dressed teams – theme letter B.

When: Saturday 7th March 2020

Where: Admirals Arms Hotel

Weigh In: 3pm-5pm

Prize giving: 6pm

Entry forms available from
Wyuna Studio or Fish & Dive.

Email: coromandelfishingclub@gmail.com

Entrants must be 15 years of age or over.

Skippers prizes!

Arts

Barry Brickell Play With Clay Day

By Pete Sephton

The Barry Brickell Play With Clay Day held on 25 January was once again a very successful community event. In brilliant sunshine about 150-200 adults and children took part in a unique clay experience over the course of the day assisted by some of the finest potters around. Local craftspeople Petra Meyboden, Kay Ogilvie, Wailin Elliot, Lindsay Garmson and Tim Fuller were joined by visiting ceramic royalty, Jenny Shearer, Pamela Annsouth and Jennifer Halli, in providing on-the-spot tutoring. Some of the highlights were the discovery of some really artistically talented youngsters and the delight of people getting use a potters' wheel

for the first time. Tim Fuller brought in his traditional Bernard Leach kick wheel while Kay Ogilvie once again provided her electric wheel. Having the chance to play on a professional potters' wheel outside of a studio situation is a real privilege. Music performed on the Barry Brickell Memorial Stage by Soul Sax Plus and Martina Mahy-Dunn added to the relaxed atmosphere of this annual event.

The organisers wish to acknowledge the generous financial support of Creative Communities through the TCDC as well and Driving Creek Potteries for providing their beautiful terracotta clay. Grateful thanks also to The Spirit of Coromandel Trust for donating the use of their marquee and gazebo and to Coromandel Players for allowing us to

use the theatre foyer to prepare refreshments. To all of the volunteer artists and helpers, thank you for once again making this such a fun and educational day. We are very grateful for your generosity.



Jenny Shearer tutoring



Lindsay Garmson and Petra Meyboden



***The perfect finish
to your home or
bach – beautiful
wooden joinery***

Ruamahunga Bay Joinery
email info@woodenjoinery.co.nz
www.woodenjoinery.co.nz



**The Czech Mates
NZ Tour**

Moravian, Slovak, Gypsy Swing, Balkan,
Folk and Original Music from
the streets and cafes of Prague

At Hauraki House Theatre
Friday 3rd April 7.30 pm

Tickets \$20 available from the
Coromandel Town Information Centre

SOLAR ENERGY SPECIALIST

Grid Connected & OFF GRID Energy Systems
FULL SUPPORT & SERVICE - Coromandel Peninsula

GOOD ENERGY

SOLAR ENERGY SOLUTIONS
DESIGN, INSTALLATION & SERVICE
www.goodenergy.co.nz
Email: info@goodenergy.co.nz

Sales 021 606 835 - Technician 021 242 3394

BACK ROOM gallery

Art Gallery in Colville

The Back Room Gallery is a quirky little Art Gallery bursting with talent, from a team of long established North Coromandel Artists. Featuring Weaving, Pottery, Hand crafted Jewellery, Fibre art, Photography, Wall Art and much more, the Back Room Gallery is well worth a visit. Only half an hour from Coromandel Township, the Gallery is located right next to the Colville General Store, and through the courtyard of the Foragers Kitchen Cafe.

Open Thursday – Sunday 10am-2pm
GI FT VOUCHERS AVAI LABLE
Don't forget to like us on Facebook! 



2020 Open Studios Coromandel

By Kaye Anderson

From this month onwards we'll be interviewing artists participating in the Coromandel ArtsTour 2020.

Nigel Sparrow

Put together a hand basin from the Seagull Centre, an unknown quantity of glass tiles found on Trade Me, the creativity and perseverance of Ali, an opportunity to attend vocational workshops and you get a uniquely hand-crafted birdbath. When mounted on the wall of his house as part of his garden, it is bound to attract the attention of both birds and passers-by.

It's all down to an initiative spearheaded by local artist Nigel Sparrow. In association with The Supported Life Style Hauraki Trust and in partnership with practising artist Debbie Brock, Nigel has the funding to operate vocational workshops in



Ali with his birdbath

Coromandel Players News

By Liz Cameron

Working closely with Jim Davis as he rehearses brings back a lot of memories for me! Perhaps I should call this piece "The Loneliness of the Long Distance Solo Actor!". Having performed a number of solo plays I know exactly what he is going through!

Rehearsing and then performing a play without fellow performers to support, encourage, challenge, and energise each other can be challenging. When one person is out there alone, it's not impossible to make it work, but it is definitely not easy! Jim is working very hard at the moment, not only learning the lines, but bringing them to life, with their different accents and moods. And he is doing a great job! Don and I smile or chuckle again and again, even though we have heard the stories a number of times, or we feel a chill as Jim presents the lines in a moving way!

When "The Daylight Atheist" opened in 2002 in Wellington, New Zealand, it was hailed as an instant classic. Ageing Irish raconteur Danny Moffat retreats from the harsh light of the world to his bedroom. There, under old newspapers and beer bottles, he sorts through a lifetime of memories and regrets, from growing up in Ireland, to the hopes and disappointments of immigration to New Zealand.

The Daylight Atheist by award-winning satirical cartoonist Tom Scott, played solo by Jim Davis, opens on **20 March**, then on **21, 27 and 28 March**. Hauraki House Theatre, 7.30pm. Warning – Adult themes, coarse language. Tickets at Coromandel Town Information Centre.

Thames four days a week. Open to people with disabilities and the wider community, the aim is to inspire creativity, where the process is more important than the end product.

There's no rigid schedule as yet, but twice a day the workshop space offers the chance to develop skills and stimulate imagination through sewing, jewellery-making, screen-printing, plasterwork, tie-dyeing, weaving and mosaics. Congratulations, Nigel, on bringing this dream to fruition!

Kim Brett

Not forgetting her love of bright colours, Kim has embraced a new path in her glass work journey. Hand-crafted fused glass plates, platters and bowls, which can also be displayed as wall hangings, are emerging from her kiln in brilliant shades of blue, green and orange. Inspiration for the designs comes from our native flora, especially the nikau and the delicate koru of our ferns. The vibrant colours are a perfect foil to the elegant simplicity of husband Kevin's wooden tables. Ideal partners!

"I just want to do stuff that's Coromandel," Kim explains. People come here and love the place so much they want to take home a piece of it."

In this vein, Kim is now venturing up another path, experimenting with jewellery and wall hangings inspired by the flowers of the mighty pohutukawa. These items are already proving a hit with visitors to the town.

Petra, the creator

Petra Meyboden lives the good life. Making pottery is just one aspect, albeit an important one, of her creative endeavours. Each morning she milks her goats. Sometimes she makes cheese, other times she makes yoghurt. The veggie gardens are vast. Onions for the coming year are about to be harvested and basil picked to make pesto. From the glasshouse tomatoes will be bottled and the carrot patch needs to be weeded.

Imagine a WWOOFer from a European city, who has spent some hours weeding that garden, sitting down to a meal of home-made bread, home-made pickles, freshly picked salad greens and fruit from her orchard. Or the WWOOFer who wants to emulate Petra's self-sufficient lifestyle and spends their days soaking up knowledge about composting, building clay-brick walls, tending goats and weaving fabric on a loom.

Petra is a woman of boundless energy, with a light-hearted spirit and the most infectious smile. Visit her studio and see for yourself.

For more information about the artists go to www.coromandelartstour.co.nz or follow us on www.facebook.com/CreativeCoro/



Himalaya shop : Colville

Hi everyone.

The Himalaya shop will not be open daily during March month. If you are thinking of coming up to Colville to see us then its probably best to phone/ text first to see if we are open that day. Our late season hours will be 10 a.m. to around 3 p.m you may contact us on email: robnnet@yahoo.com or phone: SHOP: 07 8667 224 HOME: 07 8666 865 Anette's mobile 021 139 7838 or for whatsapp 006421 139 7838 cheers, Rob and Anette

MASSAGE THERAPY COROMANDEL



- ★ Deep Tissue Remedial Bodywork
- ★ Relaxation / Swedish massage
- ★ Lymphatic Drainage
- ★ Hot Stones Massage

Lynley Ogilvie, RMT.

Call for an appointment: (07) 8668684 or 021 866868

Arts continued

Hauraki House Gallery

By Kim Brett

Summer time in the Gallery has been a busy place, with back-to-back exhibitions. Over the past few months we have had 3,582 visitors go through the gallery, enjoying all of the exciting, colourful works on display in The Christmas Exhibition. Next came the Coromandel Creative Classes and Exhibition, with four of our local artists, Tim Fuller, Annett Kaye, Vaughan Udall and Raewyn Penrose, each offering classes in their area of expertise. These all provided to be a great attraction with classes being full and people enjoying the chance to try a new and creative craft that they may not have otherwise been able to try.

February saw the Coromandel Art Group with their exhibition showcasing all of their talented artists' work over the last year.

Then Diann Cade and Jan Linklater had their great painting exhibition "Double Vision".

Easter is our next exhibition – starting **13 April** with pottery, painting and woodcarving being shown. The Gallery will be open from 10am to 4pm each day, so go along and see some new and colourful local art.



"Maureen's House" by Lindsay Nicholls

Coromandel Art Group

by Barbara Peddie

The exhibition is over for another year, and as usual was a success with over 1,100 visitors, more than last year.

There was really only one hiccup, which was weather related. We had a new plastic footpath sign outside Coromandel Meatkeepers, and discovered it could not cope with the 30 degree plus heat. What started as a smart upright sign slowly curled up into a bow, rendering it unreadable!

On to the judging – the judges this year were Linda Walsh, Maureen Kimber and Mark Attwood.

1st – "Maureen's House"

by Lindsay Nicholls

2nd – "Wax Eye" by

Wendy Moore

3rd – "Coromandel Town

Four Square" by Tiana

Dobbs

Highly Commended –

"Good Morning" by Barbara Peddie.

The raffle sold well, and earned us some funds for our art group. Thanks to Kay Ogilvie and Wendy Moore for donating a prize each.

1st – No.85 – Kathy Bland

2nd – No.68 – Jack Carson

3rd – No.88 – Trefor Roberts

4th – No.154 – Wendy Moore

Thank you to all of the locals who came to view our works.

And now we are off painting outside every Thursday, as long as this weather lasts, and right now it looks to be fine and hot and dry forever! Keep an eye out for us, and come and say hello.

WTS Shared Studios 2020

Registration is open now.

Yes!

Shared Studios time is swinging around again ... our time of hanging out in the art room at Hauraki House with a few other people and some of our favourite stuff of the moment to work with – and seeing what happens. It's about the process!

This is the artists' soul restorative, where we leave judgement outside on the doorstep in the rain, and expectation in the porch. We go quiet, we dare, we share, we discover, and we laugh a lot.

Shared Studios is a "by artists, for artists" volunteer initiative, now in its fifth year. Running for about four months, from the end of May to the end of September, it encourages a multi-disciplinary and inter-disciplinary approach, and includes visits, workshops and an end-of-season exhibition.

We are open to out-of-towners.

The sub remains at \$60.

For registration and more information please contact Sally Phone 027 302 4245, Email info@wtscoromandel.org

watch this
WTSPACE
COROMANDEL

Thinking about a renovation or new build and need some advice?

"Duncan is a very calm, reliable person. He gets on well with others and can see his way through problems or challenges."



coromandelconstruction.co.nz

duncan@coromandelconstruction.co.nz
(07)866-7796 021-173-7457

TREE WORK

Call 027 451 2224
or 07 866 8177

www.dynamictreecare.co.nz
Email: dynamictreecare@gmail.com



Environment



Forest & Bird

By Jane Foreman

The record-breaking drought we are all suffering is also having a significant impact on wildlife. The heat means that young birds are leaving the nest early or if the parents cannot keep the nest cool enough they might chuck one out. This ruru was found on the Tucks Bay walking track and was taken to the Kuaotunu Bird Rescue Trust, where Annemieke does an incredible job nursing sick and injured birds back to health.

Our present drought also means that many birds are suffering from dehydration. Ways humans can help include:

- Place large containers around gardens and in trees to allow birds to wash and drink.
- Make sure they are shallow enough to avoid small birds drowning
- Keep them cleaned out and refilled to avoid disease
- Water containers with sugar water will help white eyes and tui during the drought. (The best sugar to water ratio is 1:8. Anything higher may attract bees and wasps or start to ferment more quickly.)
- Kereru will come down to drink in a high bird container.

Because it is so dry there are fewer insects around for birds to eat. Birds like tui and kingfisher can eat cicadas, which we are hearing at the moment. However, little birds like the riroriro (grey warbler) and piwakawaka don't have big enough beaks to eat larger insects, and are very vulnerable when their supply of small flying insects dries up.

A bird lover from Waiheke suggests people leave their compost lids off so that the fantails can fly down and get the insects and small flies. Also put some fruit high in a tree and allowing it to decompose and attract insects.

In Northland, where the drought is intense, Whangarei Native Bird Recovery Centre manager Robert Webb says the thirsty kiwi are coming out into paddocks and other grassed areas to get moisture off the grass.

He suggests that if your place backs onto a kiwi area put a shallow tub of water in the bush to stop them wandering into paddocks looking for water, where they are at risk from predators. Make sure your dogs have kiwi aversion training and are securely tied up at night.

Talking of dogs, please make sure you observe the "No Dogs" signs to help us stop the spread of kauri die-back in our area. Tucks Bay is popular walking spot for dog owners but the walk through the bush with its spectacular kauri stand is strictly off limits for dogs.

Also observe the rules around beaches and always keep your dogs on a leash. Many of us don't realise how severely under threat many of our once common seabirds now are. Even the numbers of the red-billed gull, once seen everywhere on NZ beaches, are now in serious decline.

Let's all do our best to make this summer good for birds as well as people and if you do find a sick or injured bird, Annemieke's contact details are: Ph (07) 869 5695, Mobile 027 600 6959 and the website is www.kuaotunubirdrescue.org.nz.



Ruru found on the Tucks Bay track

Moehau Environment Group

By Nat Munns



International Volunteer MEG were lucky enough to have young German biology student, Jakob Büssemaker, complete a three-month internship towards the end of 2019/start of 2020. Jakob was a member of our field team during this time and was involved in real "boots on the ground" conservation work: track cutting, weed control, trap clearing etc. He was also involved in our Summer Holiday Programme helping kids at Waikawau campground build rat traps for conservation, helped with Australasian Bittern monitoring and he spent a few days working with Beth from Colville Harbour Care. Jakob was genuinely astounded at how physical the work was and commented on his first day in Coromandel that our forests weren't forests, they were jungles! He also thought the best way to describe the terrain in our Port Charles Rat Attack area was like walking the Swiss Alps every day with a large pack on!

He was in awe of the freedom we have in NZ and thought the best kiwi kai was fish 'n chips followed by hokey pokey ice cream.

Haere Ra and good luck with your future endeavours Jakob.

Weed of the Month – Montbretia

Montbretia, Crocosmia x crocosmiiflora, originates from Africa. It is likely to invade most low growing habitats, open shrubland, open or disturbed forest, streamsides or alluvial river systems, fernland and wetlands. Soil movement (road graders, fill), vegetation dumping and water movement spread this weed from roadsides, slips, wasteland and exotic plantations. It competes with groundcover and small shrubs and inhibits the establishment of native seedlings.

Easily recognisable by its tall zigzag shaped flower stems and bright orange six-petal flowers, which are produced during January and February and develop into a three-sided brown seed capsule. (Work downstream when controlling, you can dig out small sites. Usually futile in large spots as corms resprout). Dispose of corms at a refuse transfer station, or by burning or by deep burial. Or spray (full leaf stage) with glyphosate.

Have a great month everyone.

Contact us at info@meg.org.nz or make a donation by visiting our website www.meg.org.nz

McGregor Bay Wetlands

By Pamela Grealey

Let's talk about the facts of the current situation of the our local McGregor Bay Wetland.

Nobody owns the wetland reserve. It is a Common Marine and Coastal Area with local authorities having prescribed management responsibilities over it.

TCDC has stated that it has no record of an agreement with neighbouring landowners to carry out any work on the tidal gate and deems the existing gate as "unauthorised".

The existing tidal gate does not have resource consent, nor did the drainage works that were done in 2014.

There are many laws surrounding reserves, coastal areas and wetlands and the legality of such things can only be determined under such laws. The wetland has rights under law.

Waikato Regional Council are currently investigating the situation; their decision is not in the Society's power to determine.

The Society would like to see more water over the wetland so the wetland can breathe easier.

The 4Sight report commissioned by TCDC in 2019 is entitled "McGregor's Bay Wetland Restoration Options". Combined with a 2007 WRC Report and the 2018 Baseline Study it is clear that restoration is needed.

The wetland is not as healthy as it can be or should be. Restoration has many options, some more preferable than others.

The community has been lobbying off and on since 1990 for the restoration of this wetland and there has been a lot of talk and reports but no action.

It is the landowner's responsibility to protect themselves from coastal inundation on their land.

The Wetland Society seeks to stand up for the wetland. It is a community space where the tendrils of land and sea entwine and where the wild things breed.

Classifieds

Classifieds cost 30 cents per word – please email your words to corochronicle@gmail.com or call/txt Debbie on 021 235 6648.

PROFESSIONALS

A DANCE WORKSHOP FOR WOMEN - explore your ever-changing need for solitude, connection and a sense of community within the changing cycles of the seasons. A morning of dance and ritual with a shared pot-luck lunch 24 March, 10am-2pm at Mana Retreat Centre \$40. For more info www.dailyalchmey.co.nz.

A LOCAL HANDYMAN Doug Marsters for all types of maintenance jobs including Gib Fixing and Plastering, Ornate Cornice, Archers and Ceilings new and old. Over 20 years' experience. Ph 022 019 9255 or 022 019 9133 free quotes.

A-Z COROMANDEL TOWN THERAPIES - Tina 021 201 9750. Hawaiian KaHuna Massage & Fascia Release Bodywork. Awesome & helpful experience! New: Mon 5.10-6.20pm "Yoga, natural Movement & Relax" Class. Easy & fun! Now it's the perfect time to make a difference to your wellbeing & happiness! \$10. At hall above the pool. All welcome, bring a blanket and water. For more info & appointments call Tina

ABBY'S HEALING HAVEN 021 352 486. *Therapeutic and relaxation massage therapy 1 hour \$80, 90 mins \$110 *Pranic Healing-Chakra and energy clearing and balancing 90 minutes \$110 *TBT- Trauma busting treatment, an effective process for trauma and symptoms of PTSD, 60 minutes \$80 *Organic skincare and makeup consultations – Organic Ayurvedic facial massage 30 minutes \$45.

AFFORDABLE DESIGN for print and web. For businesses and artists. Tuition in Photoshop and Indesign available. Jacqui 022 392 8588.

ALL ASPECTS OF TREE WORK done professionally. Coromandel based Dynamic Tree Care. Call today 027 451 2224 or (07) 866 8177.

ARE YOU THINKING of having those needed jobs done? Whether it be Carpentry, Decorating, Tiling, I can give you advice and a free quote. Call Vaughan on (07) 866 7969.

AUTUMN IS COMING: Jobs to be done! Phone Vaughan Udall for a free quote (07) 866 7969.

BALLET CLASS FOR ADULTS Basic ballet fundamentals for beginners. Or, relive your ballet youth. Strengthen, stretch, improve posture, with an expressive outlet to music. Ph:- Marilyn Swan 027 336 5263. Email: swanebbs@gmail.com. Venue: Coromandel Citizens' Hall 455 Kapanga Road. Begins Wednesday 10am-11am. \$10 per class. Registered Teacher & Life Member RAD. 42 years' dance teaching experience.

BEGINNER YOGA WITH BECKS Tuesdays at the Anglican Church Hall, 170 Tiki Rd, 5.30pm to 6.45pm, \$10. All welcome, equipment provided. Phone 027 407 0079 for more info, www.rebeccaleaker.com.

Brick and block laying specialists. L.B.P. Phone Joel 021 0234 0210.

BROKEN GLASS? Call Mike Coromandel Glass (07) 866 8869.

CARPENTER WANTING WORK. Alterations, new houses, additions, no job too small, licensed building practitioner. Ph 021 675 575.

CARPENTRY: Windows, Doors, Decks, Kitchens. Sound Tradesman. Free Quotes. Vaughan Udall (07) 866 7969.

COMPUTER FIX. Your local support and expert for computer repairs, upgrades, backup solutions, virus removal, software problems, purchase advice or tuition. Micha Wellnitz, ph (07) 866 8932.

COMPUTER SOLUTIONS. Microsoft Certified Systems Engineer with over 15 years of IT experience providing solutions and support service for PCs, Laptops, Printers, Wired and Wireless Networks, Virus and Spyware removal, Data Protection and Recovery. Up gradations, Consulting, Design and Training. Contact: Dheeraj Bali Ph (07) 949 4162 Mob 021 207 1341 or 021 0815 5340 Email: eworks.nz@gmail.com.

COROMANDEL CATTERY (07) 866 8117, 027 433 1665.

COROMANDEL GARAGE DOORS:

Servicing & refurbishing of all types of garage doors and auto openers – sectional, roller & tilt doors. Ten years' experience. Free Quotes. Servicing the Coromandel Peninsula. Call Don 022 453 2188 or email: corogaragedoors@gmail.com.

ELECTRICAL NEEDED DONE? Call David 027 270 9140.

GIB STOPPER - Richard Field. Local and coastal. Ph 029 778 8645.

GIB STOPPER/PAINTER Alpha Drywall, Geoff, local 022 027 0290.

HENARE'S GENUINE MULTI SKILLED SERVICE. Total competence in the following skills: building renovation or repair; gib fitting and stopping; carpet or vinyl lay or repair; engineering fabrication and welding; wof or cof repair for cars or small trucks; panel beating for tractors or small trucks. Job satisfaction guaranteed. Ph 021 214 4529.

LAWNMOWING, weedeating, edges, hedge trimming, chainsaw work. Phone Hank 027 898 1029.

MOBILE SHEEP SHEARING call AJ 027 499 1448.

NAILED@SHEPSPLACE Gel Polish and Nail Art Specialist phone or txt for appointment 022 432 4519.

PAINTING AND WALLPAPERING: Neat tidy work. Free Quotes. Vaughan Udall (07) 866 7969.

PIANO TUITION: Marilyn Ebbs. Experienced in The Trinity College of Music London & ABRSM exams. Beginners from age 6 to adult. M: 027 336 5263. Email: swanebbs@gmail.com

PIG HUNTERS. Pig and mutton rolled and seasoned \$40. Phone Ernie 021 0261 7945.

POOL QUEEN LTD Mobile Pool & Spa services Coromandel Peninsula. Call the Pool Queen to have your pool clean. Sharleena Tucker 027 316 3384.

RANCH SLIDER WON'T SLIDE? Call Mike Coromandel Glass (07) 866 8869.

ROOF KING LTD New roofs, re-roofs, leaks, spouting, downpipes, and general maintenance. Ph Eli 021 160 6790.

ROOF PAINTER AVAILABLE, industrial quality paint used, free quotes, phone Dave 022 049 3649.

SOLAR SYSTEM DESIGN & INSTALL Good Energy your local Solar Specialists based in Whitianga. Ph Simon 021 242 3394.

STUMPGRINDING - Machine assisted stump removal, all sizes all areas. Ph 027 472 6627.

TILING: Wall and floor tile laying service. High standard of work. Free quotes. Vaughan Udall (07) 866 7969.

WINDOW CATCH BROKEN? Call Mike Coromandel Glass (07) 866 8869.

FOR SALE

BRAND NEW SLEEPYHEAD DOUBLE BED mattress with separate base cost \$2000. Sell for half price o.n.o (07) 866 8593.

EWES FROM FARM GATE. Please phone (07) 866 6830.

HEMP OIL FOR HEALTH: Pain Relief, Itchy Skin, Sleep & Hormonal Problems. For Beauty: Facial Serum & Egyptian Perfume Oils. Therapy & Readings by appointment. Call Gini on 027-253-0632 or 866 7308

HYDRAULIC TRUCK OR TRAILER HOIST 12v twin ram model M258 USA made Ph (07) 866 8009.

WATER PUMPS, Portable and household, all reconditioned, petrol and electric. For more information phone Maurice Coromandel (07) 866 8009.

FOR RENT

A&JS STORAGE Totalspan units Ph Judy 021 071 2252.

LARGE SECURE BOAT SHED FOR RENT. Near Long Bay. \$50.00 pw. Contact Julie 021 231 1573.

SITUATIONS VACANT

CLEANER WANTED, call Bridgette 027 722 4476.

CONCRETE WORX LABOURER POSITION. Suit someone wanting to upskill 35-50hrs per week. Must be reliable and willing to learn. Contact Warren 027 433 6538 or Carla 027 229 0319

OFFICE & HR ADMINISTRATOR. Hours of work are 21hrs per week, days negotiable. Position involves finances, HR and general running and overseeing of the Colville General Store Ltd. Full training will be given to the right applicant. For a job description please contact Emily @ emilymac2004@yahoo.ca. Applications closes 13 March.

WE'RE HIRING FOR TERM 2. We're looking for a local Te Reo tutor, interested please contact us. Contact details: Leila Ryan, Waikato Cluster Manager, Mobile: (022) 090 4995, Phone: (07) 974 9499 ext 7000. Email: lryan.cm@literacy.org.nz

WANTED

VEHICLES WANTED. Cars, trucks, vans, utes, 4X4's. Wanted dead or alive. \$ Top cash paid \$. Phone 0800 505 099.

WANTED ALL LIVESTOCK We inspect in the paddock. Also we transport every Thursday to Waikato's largest saleyards in Morrinsville. Phone Dave Coatsworth 027 481 7100.

WORK WANTED

DYNAMIC TREE CARE - Council approved professional local arborist service for all Tree Work. Fully Qualified, Equipped and Insured. Health and Safety compliant. Free quotes. Jobs large or small. Professional chainsaw sharpening. Call now (07) 866 8177 or 027 451 2224.

STUMPGRINDING - Machine assisted stump removal, all sizes all areas. Ph 027 472 6627.

TREE SERVICE. Dismantling or pruning. Free quotes. Call Jeremy Haszard 027 421 0603.

PUBLIC NOTICES

COROMANDEL NETBALL AGM Wednesday 18 March 5.30pm
Star & Garter. All welcome

THE LIGHTHOUSE STUDIO CLOSING DOWN GARAGE

SALE. Saturday 7 March and Sunday 8 March 10am-4pm.

75 Wharf Road, across from the Four Square.

Lots of woodworking hand tools, antique wood planes and furniture.

Miscellaneous hand saws, tile cutter, gib trowels, scrapers.

Builders' tools, levels etc. Timber and timber cutoffs, mostly macrocarpa, kauri, and cherry. Ramset, concrete nails and charges.

Hole saw sets – heavy duty. Routers and bits.

Assorted hardware, drawer guides, knobs and hinges, finishing products, and other articles too numerous to mention.

Everything a bargain or free. All must go. Hope to see you there!

Rain or shine, please bring your own bags, cash only.

Advertisers' directory

Company	page
360 Discovery Ltd	21
Alpha Drywall	10
Ann Kerr-Bell – Natural Medical Centre	14
Aston Electrical Ltd	8
Back Room Gallery	28
Coro Gym	4
Coromandel Accommodation	16
Coromandel Construction	30
Coromandel Garage Ltd	22
Coromandel Marine Engineering	14
Coromandel Marine Farmers' Association	11
Coromandel Players – The Daylight Atheist	15
Coromandel Plumbing (1986) Ltd	24
Coromandel Quarry Ltd	11
Coromandel Recreational Fishing Club – CClassy Chicks	27
Coromandel Refrigeration	36
Driving Creek Railway	17
Dynamic Tree Care	30
Flooring Xtra	9
GDC Consultants Ltd	27
Good Energy	28
Harcourts	18-19
Hauraki Taxation Service Ltd	20
Himalaya Shop	29
House of Travel	9
ITM	10
James and Turner	9
James Drainage '97 Ltd	26
LK & JA Gordge	25
Llandem Consulting Engineers Ltd	23
Lynley Ogilvie – massage therapist	29
Mana	24
Papa Aroha Engineering	10
Peninsula Electrical Services Ltd	26
Purnell Lawyers	17
Richardsons Real Estate	12-13
Rob's Small Motor Repairs	6
Ruamahunga Bay Joinery	28
Scott Revell Building Contractor	8
Scott Simpson MP	10
St John	10
Star & Garter	9
TCDC	7,23
Te Korowai Hauora o Hauraki	25
The Czech Mates	28
Total Hearing Care	5
Trinity Network	35
Twentymans	10
Waikato Regional Council	2
Waitaia Nursery	20
We Pay Top Cash	6

Coromandel Town weekly and monthly meetings

Every Monday

Step Aerobics at Coro Gym.....	8am
Coromandel Hikers' Group, Hauraki House, Colin & Elspeth (07) 866 7137	9am
Monday Walkers, Woollams Ave car park north end, Irene 021 157 8408	9am
Sit n Be Fit at Coro Gym.....	9.30am
Coromandel Playgroup, St Andrews Church Hall, Rings Road.	
Contact Angee 021 255 0399	9.30am-12.30pm
SeniorNet Coromandel contact Loes (07) 866 8053	4pm
Bridge, St John rooms.....	7pm
Four-part harmony singing, Sue (07) 866 8833.....	7.30pm

Every Tuesday

Croquet, Woollams Ave, Kaye (07) 866 8968	8.45am
Pastel Artists Coromandel, Coromandel Aero Club Rooms (07) 866 7220.....	9am-12pm
Coro Walking Group, Lotto Dairy, Ruth (07) 866 7246	9am
Open Floor Dance, Mana Retreat Octagon 3, 31 March.	
Coromandel Citizens' Hall 10,17 March. Price \$15.	9.30-11.30am
Yoga for everyone, Colville Hall, Kate 021 125 3152	10am
Playcentre, Woollams Ave.....	10.30am-1pm
Beginner Yoga with Becks, at the Anglican Church Hall, 170 Tiki Rd, \$10.	
Contact 027 407 0079	5.30-6.45pm
Coro Motorcycle Club, Star & Garter, John 027 234 1013	7-9pm

Every Wednesday

Step Aerobics at Coro Gym.....	8am
Coromandel Community Organic Garden volunteers' drop-in time.....	9-11am
Sit n Be Fit at Coro Gym.....	9.30am
Embodied Yoga, Anglican Church Hall, contact Charlene 022 695 9736	7pm-8.30pm

Every Thursday

Coro Walking Group, Lotto Dairy, Ruth (07) 866 7246	9am
Coro Bowls club day.....	9.30am
Coro Art Group, St Andrew's Church Hall, Val (07) 866 8911	9am-12pm
Free Guided Meditation, Havalona Pyramid	10-11am
Yoga, Move & Relax at Trust Waikato Events Centre (upstairs Swimming Pool) contact Tina 021 201 9750.....	5.10-6.20pm
Sunset Yoga with Vanessa, Colville School Hall, \$10. School Term only.	
Contact 021 1247267	5.30-6.45pm

Every Friday

Step Aerobics at Coro Gym.....	8am
Croquet, Woollams Ave, Kaye (07) 866 8968	8.45am
Yoga for everyone, Anglican Hall, Kate 021 125 3152	9am
Playcentre, Woollams Ave.....	9.45am-12.15pm
Coromandel Home-school Group, Julene (07) 866 8333	10am
Coromandel Tennis Club "club day"	4pm

Every Saturday

RSA Coromandel, RSA Club Rooms Woollams Ave. Courtesy van available.	
President Kevin Stone (07) 866 7576.....	3.30-7pm

Every Sunday

Anglican Church Service	10am
Coromandel Tennis Club "club day"	1pm

Monthly

1st Mon – Coro Patchwork & Quilters, St John rooms, Jill (07) 866 7484.....	9.30am-3.30pm
3rd Mon – Coro Patchwork & Quilters, St John rooms, Jill (07) 866 7484	9.30am-3.30pm
1st Wed – Coro Embroiderers' Guild, St John rooms, Margaret Burgess (07) 866 5769	10am-3pm
1st Wed – Lions Dinner meeting, St John rooms. President Lyn Rose (07) 866 7722	6pm
2nd Wed – Garden Circle. Jeni Mudgway 021 0227 5341	1pm
3rd Wed – Lions Business Meeting, St John rooms. President Lyn Rose (07) 866 7722	7pm
Last Thurs – Green Drinks at Star & Garter	5pm
1st & 3rd Sun – Church Service at St Andrew's Church, Rings Road.....	10am

If your meeting has been omitted, please email Debbie at corochronicle@gmail.com with the subject "meeting", or txt/ph 021 235 6648, or post details to PO Box 148, Coromandel 3543. Please include contact name and phone number.

Coromandel Town

Chronicle

Calendar of events

Coromandel Town March 2020

MON	TUE	WED	THU	FRI	SAT	SUN
2 <						



More properties for sale with
Team Rob & John

— We're Locals. We get it. —



TRINITY
NETWORK
REAL ESTATE
LICENSED REAA (2008)

New Listing

Asking Price \$970,000

5 bedrooms, 2 bathrooms, 1 car, 1 house

Preeces Point, 285 Preeces Point Road
Download infopak: www.trinitynetwork.co.nz/136682/

New Price

Asking Price \$1,480,000

3 bedrooms, 1 bathroom, 1 car, 1 house

Coromandel, 2160 Long Bay Road
Download infopak: www.trinitynetwork.co.nz/136454/

Under Contract

Asking Price \$340,000

0 bedrooms, 0 bathrooms, 0 car, 0 house

Coromandel, 205 Bellville Drive
Download infopak: www.trinitynetwork.co.nz/136674/

Asking Price \$720,000

3 bedrooms, 2 bathrooms, 1 car, 1 house

Wyuna Bay, 2385 Wyuna Bay Road
Download infopak: www.trinitynetwork.co.nz/136665/

Asking Price \$1,100,000

4 bedrooms, 3 bathrooms, 1 car, 2 houses

Te Kouma, 84 Kowhai Drive
Download infopak: www.trinitynetwork.co.nz/136579/

Asking Price \$285,000

0 bedrooms, 1 bathroom, 0 car, 1 house

Kennedy Bay, 1170 Kennedy Bay Road
Download infopak: www.trinitynetwork.co.nz/136640/

Under Contract

Asking Price \$475,000

2 bedrooms, 1 bathroom, 1 car, 1 house

Tuateawa, 22 Puriri Place
Download infopak: www.trinitynetwork.co.nz/136575/

Asking Price \$899,000

0 bedrooms, 0 bathrooms, 0 car, 0 house

Colville, 89 Wharf Road
Download infopak: www.trinitynetwork.co.nz/136546/

Asking Price \$795,000

0 bedrooms, 0 bathrooms, 0 car, 0 house

Tuateawa, 74i Waihirere Drive
Download infopak: www.trinitynetwork.co.nz/136591/

Asking Price \$495,000

0 bedrooms, 0 bathrooms, 0 car, 0 house

Preeces Point, 2328 Tiki Road
Download infopak: www.trinitynetwork.co.nz/136576/

Business

Asking Price \$75,000 + GST (if any) + SNV

0 bedrooms, 0 bathrooms, 0 car, 0 house

Coromandel, Coro Time
Download infopak: www.trinitynetwork.co.nz/136567/

Business

Asking Price \$119,000 + GST (if any) + SNV

0 bedrooms, 0 bathrooms, 0 car, 0 house

Coromandel, Coro Cafe
Download infopak: www.trinitynetwork.co.nz/136447/

New Listing

Asking Price \$630,000

3 bedrooms, 2 bathrooms, 1 car, 1 house

Coromandel, 381 Kapanga Road
Download infopak: www.trinitynetwork.co.nz/136690/

New Listing

Asking Price \$1,200,000

2 bedrooms, 1 bathroom, 1 car, 0 house

Little Bay, 8 Louise Lane
Download infopak: www.trinitynetwork.co.nz/136689/

New Listing

Asking Price \$650,000 + GST (if any)

2 bedrooms, 1 bathroom, 1 car, 1 house

Waikawau, 621 Waikawau Beach Rd
Download infopak: www.trinitynetwork.co.nz/136692/

List your property with us for only 2.5% up to \$500,000 and 1.8% thereafter + gst.



Team Rob & John

Rob Keatley
M : 0275 777 424
E : rob.keatley@trinitynetwork.co.nz

John McCaughan
M : 021 212 4423
E : john.mccaughan@trinitynetwork.co.nz



TRINITY
NETWORK

The Full Real Estate Service | trinitynetwork.co.nz



perfect AIR

PERFECT PRODUCTS | PERFECT SERVICE | PERFECT AIR



Warmer
Kiwi
Homes.



Ask us if you're eligible to receive A Warmer
Kiwi Homes Heating Grant:

Receive 67% of the cost of
a heat pump up to
\$2500_{plus GST}

Warmer Kiwi Homes is a Government programme offering grants covering two thirds of the cost of ceiling and underfloor insulation, as well as ground vapour barriers, heaters including **heat pumps**.

To be eligible for a grant, applicants will need to:

Be the homeowner (owner-occupier) and have a Community Services Card or SuperGold combo card, OR

Own and be living in a home in an area identified by the Eligibility Tool as low-income, OR

Be referred by the Healthy Homes Initiative.

Additionally, to be eligible for a heating grant, homeowners must have ceiling and underfloor insulation to EECA standards.

To determine whether you would be eligible for the Warmer Kiwi Homes grant, please use the **EECA Warmer Kiwi Homes eligibility tool**

<https://www.energywise.govt.nz/tools/warmer-kiwi-homes-tool/>



**MITSUBISHI
ELECTRIC**



Whitianga
30 Campbell St
Whitianga

Coromandel
435 Kapanga road
Coromandel

Pukekohe
7 Crosbie road
Pukekohe

07 866 4140