

August 2025  
Volume 29 Issue 8

# Coromandel Town Chronicle

[www.coromandeltownchronicle.co.nz](http://www.coromandeltownchronicle.co.nz)

The community magazine for Coromandel Town and surrounds since 1996

**FREE**  
Community Magazine



## Unforgettable adventure

SEE PAGE 3

Mystery at the Museum PG 11



Mid-year Christmas PG 12



Quadrangular Tournament PG 14



## **Haere mai. Welcome to the Coromandel Town Chronicle**

### **View each Chronicle issue online at**

**[www.coromandeltownchronicle.co.nz](http://www.coromandeltownchronicle.co.nz)**

Cover photo: Colville Junction trip to Hillary  
Outdoors, Port Charles.

The Coromandel Town Chronicle is  
published by Jude Publishing Ltd. It is  
delivered free to the Coromandel Town  
area.

For advertising please email Debbie on  
[corochronicle@gmail.com](mailto:corochronicle@gmail.com) or phone 021 235  
6648.

If you have any news stories that you'd like  
included please email [corochronicle@gmail.com](mailto:corochronicle@gmail.com). If you are not sure how to put an article  
together for publication then find tips and  
advice on the website:

[www.coromandeltownchronicle.co.nz/html/  
guidelines.html](http://www.coromandeltownchronicle.co.nz/html/guidelines.html)

The Coromandel Town Chronicle is open for  
everyone to contribute, however the editor  
reserves the right to select the articles and  
letters that are published and edit them for  
clarity and space.

The Coromandel Town Chronicle is printed  
with vegetable oil based inks by Print House  
Ltd, Hamilton. An accredited FSC and PEFC  
printer.

**Deadline for the next issue is  
4pm Tuesday 19 August.**

**Send your letters, articles and  
advertising to  
[corochronicle@gmail.com](mailto:corochronicle@gmail.com)**

Letters 350 words max.  
and articles 600 words max.

**Live out of town and would like to  
receive a printed copy?**

Annual subscription costs \$57 (incl. GST)  
NZ postage only. See contact details  
above.

Or download a PDF copy from  
[www.coromandeltownchronicle.co.nz](http://www.coromandeltownchronicle.co.nz)

Disclaimer: The publisher and its editors  
of the Coromandel Town Chronicle shall  
not be responsible in any way for opinions  
expressed in letters and articles contained  
in the Coromandel Town Chronicle or for  
loss or damage suffered by anyone in  
reliance upon the information contained  
therein. Further, no endorsement of any  
product or service featured or advertised in  
the Coromandel Town Chronicle should be  
implied or assumed.

ISSN: 1178-721X (Print), 1179-4895 (Online)

### **Emergency**

Call 111. AED's in Coromandel Town: Fire  
Station, Ambulance Station, Four Square,  
Coro Family Health, Bowling Club/RSA,  
Te Korowai and Phoenix House. Although  
AED's are important, St John say performing  
continuous chest compressions/calling 111  
takes priority.

## ..... Editor's comment .....

Coromandel Town has been listed as one of NZ's prettiest towns by Worldatlas.  
Unfortunately the photo they have put on the write up on their web page is of Thames,  
not Coromandel Town, it makes you realise that the writer hasn't actually visited –  
more like got the info off a Google search! See [www.worldatlas.com/cities/9-prettiest-downtown-strips-in-new-zealand.html](http://www.worldatlas.com/cities/9-prettiest-downtown-strips-in-new-zealand.html). Of course we already know that it is a pretty  
town – it's one of the reasons why many of us were drawn here and stayed here. Lots  
of work has gone in over the years to preserve Coromandel Town's heritage and that  
is reflected in today's appealing streetscape.

Have a great month.

*Debbie*

## ..... Letters .....

### **Response to UCLA – June 2025 issue**

Dear Editor,

In criticising DOC's use of aerial 1080 operations to control predators, the UCLA contributor  
(Coromandel Town Chronicle May and June editions) offers no named scientific sources to  
support the claims of "mass poisoning" and "lethal effects on non-target species" – other than  
two books authored by one of the association's members.

Similarly, no data is provided as evidence to back up the suggestion the use of 1080 is "an  
expensive failure", which has "spawned a range of problems and unintended impacts".

The use of 1080 has been tested through two major reviews by the Environmental  
Protection Authority (previously the Environmental Risk Management Authority) and  
Parliamentary Commissioner for the Environment. These reviews and the balance of scientific  
evidence all support the ongoing use of this tool to protect native wildlife.

There is considerable information freely available on the DOC website about 1080 and the  
positive outcomes for native species from use of this toxin in predator control. In recent years  
we have also clearly demonstrated its value for controlling pests and improving ecosystem  
health in Coromandel.

We've shared images showing tracts of forest protected by 1080, in contrast to areas  
where possums have ravaged trees and their foliage. Through two decades of monitoring,  
we've recorded a steady increase in kiwi at Moehau – showing the value of sustained predator  
control using 1080. We've also demonstrated how 1080 can keep possums to a low level in  
southern Coromandel, providing vital protection for the Archey's and Hochstetter's frogs.

There are similar success stories across New Zealand where 1080 has been used to success-  
fully protect our threatened species, and although we acknowledge there are critics of the use  
of this tool, we're proud of the biodiversity gains we have achieved through DOC's National  
Predator Control Programme. Nature is in trouble in New Zealand with native forests and  
wildlife under relentless threat from introduced predators. We use the most effective tools  
available to control predators to hold the line for our vulnerable native species while working  
towards the Predator Free 2050 goal.

From Peter Morton, National Predator Control Programme Manager, Department of  
Conservation

# SPOTTED

### **First traffic lights in Coromandel Town!**



Coromandel Town has its first traffic lights at the top bridge! (OK, so they were just temporary  
lights for road works). Spotted by Gerald Christensen who kindly sent these photos in.

Email letters and opinion pieces to the *Coromandel Town Chronicle* [corochronicle@gmail.com](mailto:corochronicle@gmail.com). Contributions should be kept short, and should not exceed 350 words. The editor  
reserves the right to reject letters or edit them for clarity and space.



### Breathing life into Coromandel

After the quiet of recent years, a palpable buzz is returning to the township, driven by the enduring spirit of the community. I myself was lucky enough to housesit here for three months last year. I took a copy of the Chronicle and made my way through almost every activity. Line dancing, tai chi, art classes, gardening, walking groups – I couldn't believe how active the community was and how warmly I was welcomed and genuinely cared for by a small community hidden in the green jewel of the Peninsula. The beauty of this place drew me in and I never wanted to leave.

The Covid-19 lockdowns, coupled with challenging weather events has certainly tested the community's resilience. Businesses have adapted, locals rallied and the undeniable charm of the Coromandel has remained.

This is why I am supporting the Coromandel-Colville Business Association and their work to reinstate the ferry service. The ferry isn't just about transport; it's a direct lifeline, connecting us to New Zealand's largest tourism port and opening our arms wide to a renewed wave of visitors. And not only that, it connects our community to friends and family, specialists and services that are much needed.

Coromandel Town has a captivating blend of gold-mining history, a vibrant arts scene and breathtaking natural beauty and this returning connection promises to breathe new life into the local economy. More visitors mean more footsteps in our charming shops, more diners in our fantastic cafes and restaurants, and more appreciation for our unique artisans and stunning natural attractions.

The ferry returning also opens up a world of opportunity for new small businesses to take advantage of a tourism upswing. If there ever was a time to breathe life into that new venture you have been dreaming of for this place, now is the time!

So let's get ready to bring back the ferry, and with it new life to our wonderful town! Thank you Coromandel-Colville Business Association for your efforts on our behalf.  
Natalie Waddell

# Colville youth have great experience at Hillary Outdoors



## Colville Junction

By Marine Baillard



### Gratitude for an unforgettable adventure: thank you Hillary Outdoors and the Coromandel Lions

Thanks to the generosity of the Coromandel Lions and Hillary Outdoors, our local young people swapped screens for streams and wifi for waterfalls for three days! The camp, held at Hillary Outdoors, Port Charles, was packed with adventure and personal growth. From sea kayaking around the coastline to abseiling down waterfalls and tackling team-building challenges, each day pushed the group outside their comfort zones. With no phones allowed and early wake-up calls for chores, they discovered that cold rivers and teamwork can be pretty energizing.

Despite the usual teenage grumbles, getting thoroughly soaked in the bush, hanging out together in the evenings, and learning to rely on one another ended up being some of the most memorable highlights.

A big shout-out to the team at Hillary Outdoors, who were incredibly welcoming and supportive throughout the camp.

To our supporters: thank you for believing in the value of outdoor education and for helping build strong, connected, and confident young people in our community.



## Is your tank CLEAN?

**TANK CHECK: \$FREE**  
Free, rainwater system check!

**TANK SERVICES:**

- Clean tank + sterilise **\$350**
- Sterilise impotable water **\$100**

## Is your water SAFE?

**UV + FILTRATION SYSTEMS:**  
Remove sludge, bacteria, bad taste/smell!

- Triple 10" filter system **\$1200**
- UV + Triple 10" filter system **\$2200**
- Add UV to existing filter system **\$1200**



**ANNUAL SERVICING:**  
Check & replace cartridges...

- Service dual 10" filters **\$150**
- Service triple 10" filters **\$230**



**RAINMAN**  
CLEAN AND SAFE RAINWATER  
**021-832-765**  
[www.rainman.co.nz](http://www.rainman.co.nz)

✓ Friendly advice   ✓ Reliable service   ✓ Fixed price   ✓ Includes installation   ✓ GST included   ✓ No surprises

## Coromandel-Colville Business Association

By Jennifer Ashman, Chair



### Coromandel Ferry

We know how important a ferry service is to the Coromandel Peninsula. So we're working with our community on a project to help advocate for and reinstate an Auckland to Coromandel ferry service.

Let's show any potential operators that there is genuine demand for a ferry. We need your help to understand the user demand and needs, and the opportunities for land based logistics and activities.

On 17 July we hosted a four hour, open to all, drop in session at the Combined Clubrooms in Coromandel. We gathered interest, service needs, and ideas for land based logistics.

We will be putting up a poll on CFM to generate wider interest.

If you have an interest in seeing a ferry service return to

Coromandel come along to our next meetings on **Wednesday 30**

**July** we will present what we've heard to date and how/who to get involved. Then on **Wednesday 27 August** we'll provide further



A packed ferry at Hannaford's Wharf in 2010

updates and discuss next steps on the advocacy project. All are welcome to attend online or at the Combined Clubrooms – please RSVP if you plan to attend.

Both meetings are held in the combined clubrooms from 5pm.

### Community meeting re NZTA Boundary bridge

On 25 June the CCBA organised an open meeting for the community to come and listen to a presentation from NZTA Waka Kotahi on the two options to upgrade the Boundary bridge, SH25. Both options involve a total close of SH25 between Thames and the Coromandel/Whitianga turnoff, during the upgrade which is scheduled to take between 9-12 weeks. One option involves four staggered, short notice closures over a 12 week period and the other involves a week-long/24/7 total shut during the nine week period. All questions, comments, suggestions and observations were collated and forwarded to the NZTA for response along with a request made under the Official Information Act for the business case and the communications plan.

Below is a summary of the response received from NZ Transport Agency Waka Kotahi, key points include:

- Road Improvements: The 309 Road and Kopu-Coroglen Road are managed by Thames-Coromandel District Council and are unsuitable

as detours due to their condition and limitations.

- Bridge Alternatives: Installing a Bailey bridge or culverts filled with gravel is not feasible due to environmental, logistical, and cost concerns. Temporary pedestrian access is being explored.
- Project Timing: The bridge replacement is scheduled for late October to early November 2025 to avoid severe weather risks and accommodate local events. Delaying or advancing the project is not possible due to the deteriorated condition of the bridge and required preparatory steps.
- Community Support: Efforts will be made to minimise disruption, support local businesses, and maintain clear communication. Compensation for business impacts is limited under the Public Works Act 1981.
- Emergency Plans: Emergency services have been consulted and are confident they can maintain access during the closure. Alternative access options, such as barging supplies, may be considered in emergencies.
- Bridge Replacement Approach: The bridge deck is being prefabricated offsite to shorten the road closure duration. Contingency plans are in place for unexpected findings during construction.
- Communication: Regular updates will be provided through various channels to ensure the community is informed before, during, and after the project.
- Community Feedback: The agency acknowledges the community's preference for Option A and emphasizes the urgency of the replacement to avoid unscheduled closures.
- The CCBA is committed to providing information on this project as and when it is received and as well all email addresses collected at the meeting have been forwarded to NZTA who have undertaken to provide information direct.

You are welcome to request the full document and the two (redacted) documents received under OIA via [ccbachair@gmail.com](mailto:ccbachair@gmail.com).

To hear more about the Coromandel Ferry Project check out the CCBA website: [www.coromandelcolville.nz/](http://www.coromandelcolville.nz/), Follow the CCBA Facebook page [www.facebook.com/coromandelcolvilleba](https://www.facebook.com/coromandelcolvilleba), or get in touch with the CCBA chair Jeni [ccbachair@gmail.com](mailto:ccbachair@gmail.com)

## Library News

By Jasmine Strauss, Librarian

We have been busy culling some of our old books to make space for new ones, so our sales shelves are well stocked. Adult books are just \$3 each and children's books are only \$1 each. We also have a small shelf of recently published books for \$5 each. Come in and grab a bargain!

We are very grateful to local author Buddy Mikaere, who has kindly donated several of his books to the library. These are now available on our shelves so come and check them out.

We are also excited to share some great news, our local Community Board has generously granted the library an additional \$15,000 on top of the \$11,000 we already receive each year. We truly appreciate their ongoing support.

Also a reminder that our AGM will be held on the **Thursday 21 August** at 1.30pm in the TCDC meeting room. If you're interested in joining the committee, please come along. We also encourage all members to attend.

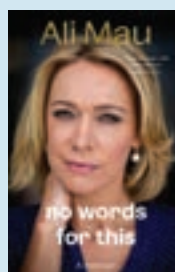
### New Books Spotlight

#### *Air* by John Boyne

A father and his teenage son take a long flight together that becomes a chance to face their past and try to heal their relationship. It's a heartfelt story about family, forgiveness and hope.

#### *No Words for This* by Ali Mau

Ali Mau shares her journey from aspiring journalist to media star, facing challenges in a tough industry and uncovering painful family secrets.



**FROGS LILY PAD**



**LICENSED**

**BUILDING PRACTITIONERS**

FOR ALL BUILDING PROJECTS  
LARGE AND SMALL CALL:

**021 051 2649 FROGGY**  
**021 851 2528 FABIEN**

---



**EARTHWORKS**

We have a wide range of earthmoving equipment, call us before you build for foundation works, driveways, landscaping and more





## Coromandel Lions Club

By Kerry Whittle



Coromandel Lions Club have been quiet in the Chronicle these past months, we aren't hibernating – our club now struggles to exist!

Our Club was started in 1971 as part of Lions International, a worldwide charity organisation ([lionsclubs.org](http://lionsclubs.org)). As part of this worldwide organisation we have access to a network made up of over 1.4 million members – but very few representing Coromandel Town!

Our Club works for our local Coromandel community and are proud to have given back \$14,365 in the past year to the following causes and projects:

- Suicide Prevention
- Hauraki Māori Rugby League
- Hana Riddle-Pelchen (NZ Mixed Netball Rep)
- Coromandel Youth Support sailing
- Coromandel Library
- Aroha Renata (Medical expenses)
- Bridget Pratt (Medical expenses)
- CAS Senior Girls Netball
- Colville Bay Pre-School
- Colville Junction Youth Group

### Are you keen to serve the community?

Along with helping so many worthy local causes and projects, Membership with our Club can be a valuable addition to a

resumé or application to jobs and universities. We have leadership development opportunities through Lions International, and leadership roles available to be filled (desperately seeking a treasurer!).

Our Club firmly believes that health, family and work comes first. If you are ready to serve Coromandel and want to find out more about what it means to be a Lion, come along to the St John rooms where we meet on the 1st and 3rd Wednesday evening of each month. One is a business meeting and the other a Pot Luck Dinner meeting – we're there from 6pm. New members are sought in any capacity, we know there are a wealth of skills (and personality!) in our community.

Coromandel Lions would like to send best wishes and hugs to Lions Mary and Robyn on their health journeys, and to wish Lion Joan all the best on her new lifestyle journey.

Sending thanks to each "Friend of the Lions" – folks who pitch in when and where they are available. Particular thanks to three Mikes: Mike McCall from Papa Aroha Engineering, who sharpens and maintains our chainsaws and wood splitters; Mike Huitema from the Pepper Tree, who gives time from his busy schedule to chainsaw large pine



Busy bagging firewood to stock at Four Square Coromandel

logs; Mike Downs – always willing to give freely of his time to help with club activities. You are all valued Friends of our Lions Club, cheers.

Remember, when you see us selling mussel fritters, with a smile, or offering firewood – funds raised are going to local worthy causes. If you can give financially, great, if you can help us by joining – even better!

Yes, firewood is still available. \$200 per truck load delivered in Coromandel – call Sue 021 142 1124.

Coromandel Lions Club contacts: Sue Hughes (President) 021 142 1124, Jean Smith (Secretary) 021 208 7576, Kerry Whittle (Projects) 027 474 2850

# LEADERSHIP YOU CAN COUNT ON

✓ *Vote*

# Peter Revell for Mayor

- ✓ Control rates
- ✓ Empower communities

[coromandelmayor.co.nz](http://coromandelmayor.co.nz)



Authorised by Peter Revell, Kuaeranga Valley, [revellp@gmail.com](mailto:revellp@gmail.com)



## Mahamudra Centre

By the Mahamudra Centre Team

### Sacred art, wellbeing and gratitude

It's been a meaningful and active winter season at Mahamudra Centre in Colville, and we're delighted to share what's been unfolding – and what's coming up.

### Create with Purpose: Sacred Art Workshop (15-17 August)

We invite you to join us for a peaceful and hands-on weekend exploring the ancient Tibetan art of tsa tsa making. These sacred clay images, traditionally used for healing and purification, are created as offerings or for personal practice.

The Create with Purpose retreat will guide participants through this meditative practice, with no previous experience needed. All materials are provided, and the weekend includes nourishing vegetarian meals. It's a chance to step back from the noise of everyday life and reconnect with intention, creativity, and calm.

### Qi Gong for Vitality & Wellbeing (5-8 September)

In September, we welcome back much-loved teacher Hedwig Bakker for a three-day Qi Gong retreat focused on health, vitality, and balance. Hedwig's gentle, accessible approach helps participants connect with breath, movement, and inner stillness – perfect for newcomers and seasoned practitioners alike.

This retreat supports physical and emotional wellbeing, especially as we move toward spring. Participants will enjoy daily Qi Gong sessions, guided relaxation, and the peaceful surroundings of Mahamudra Centre.



### A furry new resident: meet Tara the cat

We're also happy to introduce our newest team member – a beautiful cat named Tara. True to her name, she brings a peaceful and watchful presence to the land. You might find her lounging in a sunny spot or quietly meditating on the couch.

### Thank you for celebrating his holiness the Dalai Lama's birthday

A heartfelt thank you to everyone who joined us on 6 July to celebrate the birthday of His Holiness the 14th Dalai Lama. It was a joyful occasion filled with prayers, stories, and community connection. Events like these remind us how fortunate we are to be part of a lineage grounded in compassion and wisdom.



### A personal goodbye and heartfelt thanks

As the current manager, I'd like to take a moment to say thank you to the community – here in Colville and beyond – for your kindness and support over the past six months.

It has been a privilege to be part of the Mahamudra Centre's daily life: welcoming retreatants, sharing stories with locals, and witnessing the quiet transformations that happen here every day. Mahamudra is more than just a Buddhist retreat centre – it's a space of refuge, learning, and deep connection.

As I hand over the role, I do so with gratitude and trust that the centre will continue to grow, serve, and inspire. Thank you for being part of this journey – whether through your presence at a retreat, a shared meal, or simply a wave as you passed by.

With appreciation, Eleni, Outgoing Manager, Mahamudra Centre.

To learn more or book a retreat, visit: [www.mahamudra.org.nz](http://www.mahamudra.org.nz)

## Coromandel Contact Bridge Club

By Judy Bronlund

Winter has set in with a lot more rain. It has been good getting enough folk coming along on a Monday evening when we get to have two and occasionally 2½ tables. So good to have a couple of new members come and join us.

We play each Monday evening and visitors to town are welcome to join in with us.

Contact Jackie 021 061 6876

**TWENTYMANS**  
FUNERAL DIRECTORS  
Since 1867

*Honour your loved one's legacy in the best possible way*

07 868 6003  
[funerals@twentymans.co.nz](mailto:funerals@twentymans.co.nz)  
[www.twentymans.co.nz](http://www.twentymans.co.nz)

**RAD**  
REVELL  
ARCHITECTURAL  
DESIGN

- New home design and draughting
- Alterations and additions
- Resource and Building Consent applications
- 3D rendering
- Landscape design

**Scott Revell**  
NZDipArchTech  
027 861 6592  
[scott@revelldesign.nz](mailto:scott@revelldesign.nz)  
[www.revelldesign.nz](http://www.revelldesign.nz)

LICENSED BUILDING PRACTITIONER  
BUILDING CONFIDENCE



## CILT

Tēnā koutou katoa.

We're halfway through 2025, and what a vibrant and productive season it's been! At CILT, we've been busy both behind the scenes and out in the community – teaming up with Every Bite to host some awesome Zero Food Waste events and continuing to grow our projects and services, with new ideas taking shape and more exciting initiatives on the way.

As always, we're grateful for the support of our community and look forward to what the rest of the year brings. Whether you've volunteered your time, donated to one of our projects, or simply shared a kind word, your presence makes a difference.

Ngā mihi nui, the CILT team.

### General Manager Announcement

The Board of Trustees is delighted to announce the appointment of Kevin Ngapo-French as the new General Manager of CILT.

The journey to this appointment has not been without its challenges – as expected, it was no easy task to find someone to follow in the footsteps of our much-respected kaiwhakāū, Mike Noonan.

Kevin brings warmth, integrity, and a deep commitment to people and place. His natural leadership and strong connection to community values make him a great fit for this role. We are confident that under his guidance, CILT will continue to grow in ways that reflect the hopes and needs of our whānau, both within CILT and across the wider community.

"Ehara tāku toa i te toa takitahi, engari he toa takitini." My strength is not as an individual, but as a collective. We warmly welcome Kevin and look forward to this next chapter together.



### What's on at Te Mana Tangata

Our awesome kaimahi Santana and Te Raana warmly invite you to drop by Te Mana Tangata – our bright little orange cottage at 100 Pound Street, Coromandel Town.

Te Mana Tangata is a day programme that offers a safe, friendly space for people in our community to connect and dive into a variety of fun, hands-on activities. From gardening, pottery, carving, weaving, cooking, to sewing – there's something new to discover every day. Plus, we love exploring the community with regular trips to beaches, cafés, and other local spots.

We're open Monday to Friday, 9am-3pm, and lunch is provided. Our weekly schedule stays the same, so you'll know what fun activities are on each week, but we're always excited to try new activities. If you have a passion or want to learn something different, just let us know! You can find our schedule at [www.cilt.org.nz/community/](http://www.cilt.org.nz/community/).

Nau mai, haere mai – come and see if Te Mana Tangata is the right fit for you. Drop in anytime or email Santana at [santana@cilt.org.nz](mailto:santana@cilt.org.nz) for more information.

### Financial Mentoring Service: Manaia and Colville

Did you know that our awesome financial mentor Treena offers financial mentoring in Manaia and Colville once a month? This is a great opportunity if you live in or around Manaia and Colville, and could use a hand with your budget, tackling debt, or just want some friendly, practical advice without having to travel into Coromandel. This is a free, confidential, and non-judgmental service.

Treena's got a big heart, loads of knowledge, and a real knack for making budgeting less stressful. Call us on 027 316 4662 to book your appointment.



### Volunteer Celebration

On 17 June, CILT and the Coromandel-Colville Community Board hosted this year's Volunteer Appreciation event in honour of National Volunteer Week – a chance to recognise the incredible mahi of our local volunteers. The afternoon brought together a fantastic crowd, great conversations, and delicious kai. Thank you to everyone who joined us – we hope you left feeling valued and inspired!

## JOHNSTON FENCING

PHONE ROSS  
021 395 900

## McQuoid Contracting Limited



Gorse/Scrub Mulching  
Land Clearing  
Landscaping/Earthworks

Pole Sheds  
Retaining Walls  
Site Works

Driveway  
Maintenance

Contact: 027 325 0855  
[cameronmcquoid@hotmail.com](mailto:cameronmcquoid@hotmail.com)

## Open Floor Dance with Lisa in Coromandel Town

By Lisa Corston-Blanche

A time to simply turn up, simplify life for a moment and feel the goodness of being alive in this human body right now.

Open Floor is a movement practice rich in resources for being human, guiding us to come home to our bodies and find ease within our own skin. By engaging with these resources on the dance floor, we deepen our resilience in navigating the wild ride of living.

It is a practice that welcomes people of all ability levels. There are no moves to learn and no experience needed, come just as you are.

Tuesday classes blend guided exploration with time for personal practice, accompanied by a diverse range of music that inspires everything from wild, expressive movement to quiet, introspective moments.

Monthly Sunday morning "Just Dance" sessions (starting in October) have minimal instruction. They are a great opportunity to shake off your week, to press "refresh" on the routine and chaos of daily life, to gift yourself the "time-out" we often don't offer ourselves because we are so busy with our list of doings.

So ... come feel alive in the human body you inhabit ... move, sweat, be, dance ... know the Open Floor is ready for you to show up.



Tuesday classes with Lisa in August: **5, 19** (Pippa at pranadance), **26 August** at Mana Retreat Centre 10-11.45am

Monthly Sunday morning "Just Dance" with Lisa begins **19 October** at Coromandel Citizens' Hall 10.45am-12.15pm

Class price (same for either session): \$25 to \$20\* sliding scale, choose as you can sustain ... \*and if this is not possible pay as you can. Oh and your first ever "Dancing with Lisa" class is free whether it be a Tuesday or Sunday, simply come up and say hi at the beginning of class.

Dance with you soon, Lisa.

See [www.wildbonesopenfloor.co.nz](http://www.wildbonesopenfloor.co.nz), [wildbonesopenfloor@gmail.com](mailto:wildbonesopenfloor@gmail.com), Facebook: wildbonesopenfloor, txt 021 175 4741

## Age Concern

By Jo Sanderson, Team Leader Age Concern Hauraki Coromandel

New YouTube exercise channel for Age Concern Hauraki Coromandel!

Over the last few months, we have been videoing small exercise routines that can be done by people of any ability. They can be done seated or standing and offer a great strength and balance improvement when done regularly. There is a choice of different routines for balance, cognition, joint mobility, and moving around.

We have also started a series of exercises especially made for people with Parkinson's.

Visit and subscribe to our channel: [www.youtube.com/@Age-ConcernHauraki-Coromandel](http://www.youtube.com/@Age-ConcernHauraki-Coromandel).

We are so lucky to have Dr Francine Hills in our team. She is a dance practitioner, researcher, and advocate for dancing into health. Her work is dedicated to making movement accessible, meaningful,



and empowering for people aged 65 and over, supporting health, well-being, and connection through every stage of later life.

In 2018, she trained with Aesop, an organisation pioneering arts solutions for social needs, to deliver their innovative Dance to Health programme for National Dance Company Wales. This programme combines creative dance with evidence-based strength and balance exercises to support falls prevention. These experiences directly inspired her doctoral research at the University of Auckland, where she was awarded the Rosemary Buchanan Scholarship (2020) to investigate the role of weekly dance classes in supporting health and well-being after a fall. Building on both practical and academic insights, she has since evolved her own practice, placing dance at the heart of healthy ageing initiatives.

Living and working in Aotearoa New Zealand has shaped and deepened her research and practice. Integrating principles from Te Whare Tapa Whā, developed by Sir Mason Durie (1984), has enriched her understanding of dance as a holistic practice – nurturing not only physical well-being

(taha tinana), but also mental and emotional (taha hinengaro), social and family (taha whānau), and spiritual (taha wairua) health. Dance creates a space where connection, belonging, and shared purpose can flourish, touching the deeper and often intangible parts of the human experience. She is fascinated by these felt experiences, and the role of the facilitator in bringing them forward.

Alongside her role here as Health Promoter for Age Concern Hauraki Coromandel, Francine is developing and delivering movement programs across the Coromandel Peninsula and Hauraki Plains. Her practice also includes working with people living with Parkinson's, using dance as a tool for mobility, confidence, and connection. She guest lectures at the University of Auckland and Dance Therapy Training Aotearoa and delivers professional development training for organisations working with older adults both nationally and internationally.

Every day, she is grateful for the opportunity to share dance as a tool for ageing well, living fully, and staying connected to ourselves and to each other.



- Concrete Floors
- Driveways
- Pathways
- Concrete Cutting
- Landscape
- New Developments
- Grounds Maintenance

**Aaron 0274584044**

**WANT**  
NATIVE NURSERY & EDIBLES  
WAITAIA RD, KUAOTUNU

A wide range of beautiful natives, palms and fruit trees.

Potting mix, compost, mulch, chook manure.

Open Thursday- Sunday 8.30-4.30 or by phone appointment  
Please phone Colin Hill 07 869 5910 or Cam on 021 620 798



# /Richardsons

Real Estate Ltd MREINZ / Coromandel  
Licensed REAA2008



**Kim**  
021 533 174  
Licensed Branch  
Manager



**Melissa**  
027 249 8287  
Licensed  
Salesperson



**Laurie-Ann**  
027 927 6368  
Licensed Property  
Manager



**Lynne**  
Office  
Administrator

151 Kapanga Road, Coromandel

Phone: 07 866 8900 ☺

[www.richardsons.co.nz](http://www.richardsons.co.nz)

[coromandel@richardsons.co.nz](mailto:coromandel@richardsons.co.nz)



Richardsons have been **Keeping the 'Real' in Real Estate** since 1960. During August, we celebrate the 10<sup>th</sup> anniversary of moving into the new office. Please feel welcome to call in for coffee, cake and a catch-up ☺



Just WOW!!! Comprising a Lease that expires in March 2069, the land affords a phenomenally private, 'off grid', waterfront location. Large 3brm home, separate lounge, superb decking, double garage. **\$By Nego**



Nestled perfectly on a well-established 1,067m2 section, with a great variety of fruit/citrus trees and a northerly aspect. Immac presented 2brm home, lounge/sunroom, kitchen/dining. Separate garage. **\$650,000**



Excellent for alfresco living! Large covered deck with separate 'hobbyists' workshop. Spacious lounge, large open-plan dining/kitchen, 3 bedrooms (master en-suite), internal access garage and 707m2 section. **\$785,000**



Bring the horses/cattle/sheep! 7.4Ha in pasture, small studio, 147m2 barn, sea views. **\$1.25M**



Immaculate inside & out! Stunning 4brm home, 3bthrms, large garage, superb decking. **\$1.25M**



Excellent 3brm family home, fantastic garaging, large 1,226m2 section, walk to shops. **\$775,000**



Framed view! Brilliant privacy, 3brms, 2bthrms, garage & dble carport. CV = \$1.12M. **\$By Nego**



Beautiful 3brm Bay Villa, 4 decks, double garage, studio room, private 1,095m2 section. **\$810,000**



Such an easy walk into town. 2brm + garage unit on Cross-Lease section. Tenanted. **\$550,000**



The PERFECT fishing base. 2brms, great decking, double garage, plenty of parking. **\$675,000**



It's BIG! 176Ha of native bush, cleared forestry, stunning privacy, barn & sea views. **\$1.395M** + GST (if any)



## Coromandel Embroiderers' Guild

By Heather Arthur:

We had a great selection on the show and tell table this month and lots of ladies attending, even one granddaughter with her stitching.

To follow on from last week's class of a Pulled Thread bag (Wednesday and Thursday) Vi King has already finished her beautiful bag in pink... astonishing. Then more completed projects from recent (and not so recent) classes. Another Snutki doily, a workstream piece with strawberries ready to be attached to a bag, a Xmas decoration in stumpwork and a needle book. Then there was a little cardigan with embroidery, two cross-stitch pictures, a gorgeous teddy bear quilt beautifully embellished for a one-year-old in England. He will never get to sleep looking at them all. If you would like to see these go to Facebook and search: Coromandel Embroiderers Guild, click on the pohutakawa flower icon.

Our much anticipated biennial retreat is organised for the end of July when we have a four day getaway to stitch and socialise. A lot of fun is had and a lot of stitching done... more next month.

We are always keen to welcome new members so come along and join our happy group. We meet on the first Wednesday of the month in the Coromandel St John rooms at 10am. For more information you can contact Helen on 07 866 8460 or email [coromandelembroidery1@gmail.com](mailto:coromandelembroidery1@gmail.com)



## Coromandel Museum

By Maureen Kimber

Our Museum winter closure is always a busy time for the committee, as new displays are planned, maintenance jobs done and new merchandise ordered for sale. All these important tasks are being tackled behind the scenes to ensure that our new season continues to be an informative and interesting attraction.

As previously mentioned, we hope that our October opening display will be entitled "Coromandel Granite – Helping To Build New Zealand", and featuring "Sewing For The Family" the following month – this is where we would like to enlist your help! Do you have any ideas for future displays, and what interesting subjects would showcase our amazing Coromandel and its history? Please let us know, after all it is your Museum. Even better, if you have an idea and would like to be involved in its setting up, just contact us – we now have a dedicated website and email address as follows: [coromandelmuseum@gmail.com](mailto:coromandelmuseum@gmail.com) also a Facebook page – easy to find us now.

The Museum is re-opening earlier this year to coincide with the first weekend of the Coromandel Arts Tour on **Saturday 4 October**. So plenty to do and see, and also don't forget our connections with the Stamper Battery, soon to re-open in its former glory.



**4**  
SQUARE

**COROMANDEL**

**YOUR  
LOCAL  
FRESH  
GROCER**

**OPEN 7 DAYS  
50 WHARF ROAD, COROMANDEL**

**HD Diggers**  
**COROMANDEL**

Hunchie Davies 021 796 452

**Excavations Landscaping Siteworks**

## Peninsula Pest Services



Contact us for control and prevention of insects, rodents and other pests!

Phone Simon English on 027 555 1271

Email: [peninsulapest.nz@gmail.com](mailto:peninsulapest.nz@gmail.com)

[www.peninsulapest.co.nz](http://www.peninsulapest.co.nz)





Left to right: Claire Johnson, Don Hughes, Maureen Kimber, Angee McWatt, Karen McMillan, Jan Autumn and Judy Bronlund in front of the mural at the Museum

## Mystery at the Museum

By Angee McWatt

This story started nearly 10 years ago when I walked into the Star and Garter looking for a job, and met Karen McMillan. We got chatting and told her about my family and my connections to Coromandel. Though I was from Thames, I had been coming here since I was young, and my family have been living on the coast for generations, as I am descendant of the Wenzlick's. My Aunt Bev and Uncle Don Campbell lived here and we would visit them, sadly they have both passed on now.

Karen says I have something to show you. Upstairs a big mural is hung on the wall. It depicts the town's street in the 1800's and was the artwork of my Great Aunt Beverly Campbell. She tells me the story of the artwork and how she and Brian (her husband) rescued it from the dump, when they were buying the building back in 1998. She says there are two parts to this artwork, it is part of a pair. The other piece which they saved was donated to the Museum.

Then a couple of years ago, I went to the Museum and talked with Judy Bronlund. She knew about the artwork, and currently it was in safe storage. I was allowed to have a

look, it was tucked away and was quite big. I couldn't see all of it.

I imagined how I would be able to see it. They had no space at the Museum to display it. It needed to be safeguarded because of the history it contained about Hauraki House. I thought the foyer of the theatre would be ideal. As a member of Coromandel Players, and Coromandel Superstars (youth theatre), I discussed it with them and they agreed it would be the perfect place for this piece of artwork.

Then with permission given from the Museum and the McMillans, plans were made and with help of Maureen Kimber, on Saturday 28 June it was moved from the Museum and kindly gifted it to the theatre for the preparation of the installation at Hauraki House.

I spoke to the people gathered about

how cherished my Aunt Bev was. She was an amazing and talented artist – especially horses, which were her favourite. She was a writer of stories and poetry, loved gardening and of course her family. She had worked



Close up of the mural

as School secretary here in Coromandel until she retired in 1987. I talked about how important this artwork of hers was, not only for her family legacy, but to the history of Hauraki House. But I had no real idea why this mural was created.

Karen had recalled Aunt Bev sketching this artwork underneath the big Magnolia tree, when she was young attending school at Hauraki House. Don Hughes, a former teacher, also remembers this. We discovered it was for the Centenary of Coromandel Schools in 1973.

An unveiling of this artwork will be at the beginning of October so that all of Beverly's children, grandchildren, great-grandchildren and other family members are able to attend. Also time and money is required to get it framed correctly and protectively, before placing it in situ.

I'm hoping this could be a community event as Hauraki House is a shared building with the Theatre, Art Gallery and Youth Group and Hauraki House Reserve is an important part of our community. It is a beautiful space for the young and old to enjoy.

Any help would be greatly appreciated. Please contact me at [angelamcwatt@gmail.com](mailto:angelamcwatt@gmail.com)

## Meet the candidates – local elections

### Mayoral candidates

Meet the Mayoral Candidates event on **Sunday 3 August**, 2-4pm at Whitianga Town Hall.

Organised by Whitianga Residents and Ratepayers Association (WRRRA).

### Coromandel candidates

Meet the candidates evening to be held on **Wednesday 24 September**, commencing at 5pm at the Combined Clubs, Woollams Avenue, Coromandel.

Organised by the Coromandel-Colville Business Association CCBA.



The fairest fare by far

**For a professional & friendly  
everyday taxi service & more!**

Ph: 027 376 4466

Email: [corotaxis3506@gmail.com](mailto:corotaxis3506@gmail.com)

[www.corotaxi.co.nz](http://www.corotaxi.co.nz)

## Coromandel to Thames Connector Shuttle

MONDAY, WEDNESDAY & FRIDAY

**8am** – depart Coromandel

**9.10am** – arrive Thames

**2 hours of shopping!**

**11.15am** – depart Thames

Click & collect service available!

**Bookings essential.**



## Patchwork & Quilters

By Sue Smith

It's hard to believe we are half way through the year. So it was time for our mid-year Christmas lunch. We had a pot luck and what an array of food. Always surprises me how well it all goes together. Nobody went home hungry.

Mid-year is when we submit our President's Challenge. This year it was to be a Lap Quilt with an animal theme. There were nine entries. Our winner was Pauline with her elephants. They are absolutely gorgeous. A very creative quilt made with her own design and imagination. Our runner ups were Ursula with her clever animal faces and Fi with her Panda faces. Well done to everyone.

We meet at the St John Ambulance Rooms on the 1st and 3rd Monday of each month, 9.30am to 3.30pm. Feel free to call in and see what we are up to.

Contact – President, Fiona Neal  
027 373 6991 or Secretary, Michaela  
Green 021 028 71879



Lap quilts with an animal theme

## Dayle ITM Gold Rush Rally

The Gold Rush Rally is coming to The Coromandel on **Friday 22 and Saturday 23 August**. Please be prepared for road closures.



### Event and stage times

**Friday 22 August** – Start – Blacksmith Lane 5-6.30pm

**Saturday 23 August**

SS1 Ventia Port Charles (Kennedy Bay to just north of Colville), first car 8.18am

SS2 Ventia Port Charles 2 (Kennedy Bay to just north of Colville), first car 10.06am

SS3 Carbonworks Forestry NZ 309 1 (309 Rd), first car 11.14am

SS4 Dayle ITM Coroglen 1 (Tapu Coroglen Rd)

First car 12.37pm

SS5 Carbonworks Forestry NZ 309 2 (309 Rd), first car 2.05pm

SS6 Dayle ITM Coroglen 2 (Tapu Coroglen Rd), first car 3.28pm

SS7 Carbonworks Forestry NZ 309 3 (309 Rd), first car 4.56pm

SS8 Farmer Autovillage 55 (Whitianga), first car 5.24pm

Finish – Blacksmith Lane, first car 5.34pm

## Hot Spot Coromandel Volunteer Fire Brigade

By Rob Chappell

Callouts: lift assist ambulance, car off road Kirita Bay, cardiac arrest (2), alarm activation, sprinkler activation, car vs house, fire alarm school, security alarm Coromandel, fire in backyard, helicopter lift, car fire.

Never a dull moment during this damp winter period however we on the Coromandel have been fortunate. At this time across Aotearoa many communities are being hammered with what essentially were once called subtropical cyclones. Significant winds and heavy intense extended periods of rain resulting in flooding seemingly mostly beyond previous record. The outcome is trees down, power off for days, crops ruined, fence lines destroyed, land erosion and access bridges out.

Each year this devastation appears more intense, and it seems to move its zone, last year the East Coast/Gisborne region, this year sunny Nelson/Marlborough. We can only be sympathetic to those regions and their survival, maybe we can even help where possible but all the while we also need to be alert and prepared as best one can at home. The Coromandel is not immune from these weather extremes, it's not that long ago we also were subject to similar weather extremes with substantial slips, roads closed for extended periods, power down and out, intense flash flooding – the question is are you prepared for this today?

While in recent times our power suppliers have made vast improvements to supply with large backup generators and improved lines but still our roads are vulnerable, they are still slipping and the roadside vegetation still falling, hence right now are you prepared to be at least somewhat self sustaining for a few days. Do you know where to find your backup lighting/candles? Is your BBQ gas full? Do you have a few days backup food tins or frozen? Is your driveway accessible if needed for the big red truck? Is your trampoline fixed? Is your neighbour vulnerable? All food for thought – roll on summer. Be safe.

## PENINSULA ELECTRICAL SERVICES LTD

Commercial & Domestic Electrical Contractors



### RAVINDER & SUE RAJ

Registered Electrical Inspector

P.O. Box 109  
Coromandel

Telephone (07) 866 8166

Free Phone: 0800 4 Electrical (0800 435 328)

E-mail: ravinder@e3.net.nz

1750 S/H 25

Coromandel

Fax (07) 866 8162

Mobile (0274) 738 734



Andrew Richardson  
Certifying Plumber

0274 712 247

MATARANGIPLUMBING@GMAIL.COM



## What is the story about Maori Wards?

By Lora Mountjoy

In this year's local elections, voters in the TCDC area who are registered on the Māori electoral roll will, for the first time, be able to choose a Councillor to represent their specific interests. This is because our current council voted unanimously to create a Māori Ward.

However this right for Māori representation is threatened. As a result of recent legislation, all voters in the Thames Coromandel District Council area will be asked to vote in a referendum, the results of which will determine whether Māori Wards will be able to continue after this term.

Because we have not had time to see what the effect of having a Māori Ward here will be, voters may question the benefits, or disadvantages of this. The matter of cost is always of concern to voters, but Councillors have agreed to share relevant funds so that the Māori Ward will not incur any additional cost.

Equality is another issue which is often brought up when one group is offered something different. This is not an issue here. Claims that Māori Wards and constituencies provide undue advantages are unfounded. The size of Wards like Coromandel/Colville or Whitianga is based on population numbers and the same is true of Māori Wards. Māori representation ensures fair representation proportionate to the Māori population and does not undermine the principle of one person, one vote. All electors, from both Maori and General rolls, can vote for the Mayor and their local Community Board members.

To see how Maori Wards have worked out elsewhere, I looked at the Waikato Regional Council, which has had two Maori Wards since 2013. Because they were established before 2020, the referendum does not apply to them, however they made a submission opposing the need for others to hold a referendum. In this they said:

"Equitable representation for all communities, including Māori, ensures diverse perspectives and better outcomes for everyone. Māori wards and constituencies rectify historical under-representation and contribute to a more inclusive and effective local government."

Almost all (43 out of 45) Councils which already have Māori wards are keen to keep them. They say Māori Wards bring communities together, building bridges between Councils and hard-to-reach communities, and have been instrumental in improving responses to natural disasters.

On the evidence, this Pakeha woman will vote to keep Maori Wards but if you want to know more, the official Vote NZ website has simple information.

<https://www.votelocal.co.nz/maori-wards-and-constituencies/>

## Cockroach on the ceiling

By Mo Irvine ©

I don't like the way it lurks there,  
quiet, unmoving  
when I switch on the bathroom light  
and creep inside.

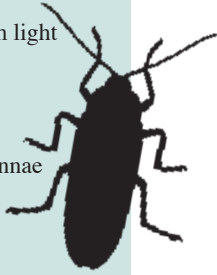
I don't like the way it scuttles  
behind my back,  
subtly changing position, antennae  
aquiver  
noting my presence.

I don't like the way it freezes  
when I look round,  
both of us playing an insectile-anthropoid  
game of It.

I don't like the way it gauges  
my hesitant movements  
stop-go-run-freeze, shiny brown body  
hanging upside down.

I don't like the way it bobs  
updownupdown  
its six alien legs taking it places  
I can never go.

I don't like it much.  
I watch it watching me  
and I suspect  
it doesn't like me much either.



POETRY  
SPOT

## Grey Power Coromandel

By John Rabarts

### Grey Power AGM 2025

The Grey Power Federation, which overlooks the many Grey Power Associations, from Invercargill to Northland, held its Annual General Meeting in Wellington mid June. Bill Chadderton and John Rabarts attended on behalf of Grey Power Coromandel. Minister Winston Peters, shared his thoughts of needs of older generation, and whether you support him or not he is forthright and entertaining. As a departing shot he unveiled our new "Grey Power Owl" logo. We will see if we can show you next month. Benefits offering include a very interesting hearing aid programme, tyre discounts, our usual Grey Power Electricity and new Fuel Card with discounted petrol and diesel. More about these in a future Coromandel Town Chronicle and our next newsletter, before our August meeting.

Next General Meeting of Grey Power Coromandel will be held at 10.30am **Wednesday 20 August** at the Combined Clubrooms, Woollams Ave.



## Coro Chess Club

By Mike Mann

The chess club meeting Weta Cafe weekly Fridays 9.30am.  
Good to see younger generation joining in.  
A fun time. Turn up, keeps the brain active.

**James & Turner**  
131 Kapanga Road  
07 866 8805



## COROMANDEL FISH - DIVE - HUNT



**BOAT PARKING AT THE  
REAR OF THE SHOP  
- TURN BY THE FOUR SQUARE**

**Rob & Jeni Ashman** Owners / Operators  
Rob - 027 592 7180 | Jeni - 021 636 119 | Shop - 07 866 8797  
teamashman201@xtra.co.nz | 95 Kapanga Road Coromandel

## Llandem Consulting Engineers

**Derek Stewart**  
CP Eng MIPENZ

- Structural
- Civil
- Geotechnical

llandemengineering@gmail.com  
(07) 866 6704  
027 442 4234



## Bowling Club

Due to having a grass green at our club, we can only play bowls during the months of September to May and even then, only if it's not closed due to being too wet. Hopefully, all going to plan, we can raise enough funds to install a carpet green which will give our club all weather play, less money spent on maintenance and more time on the green, year-round.

So, most of our bowling during the months of June, July and August are spent playing on carpet greens around the Thames Valley, with our closest being at Mercury Bay where they are currently running a Triples Tournament every two weeks on a Sunday. Jim Dicks, James and Judy Campbell came third in the tournament held on 22 June.

The Coromandel Bowling Club can also be very proud now to have four "Juniors" (year 1-5 bowlers) in the Junior Thames Valley Rep Team.

At the Quadrangular Tournament (teams from Thames Valley, Counties-Manukau, Waikato and Auckland) held on 5 July in Cambridge, Layke McNeil played in the Men's Singles, John Westray played in the Men's Fours, Judy Campbell played in the Women's Pairs and Judith Haycock played in the Women's Fours. It was a great experience for everyone and overall, Thames Valley came 3rd.

At Mercury Bay, we had the second of the "Winter Cup" challenge with 18 players travelling over for the day. The results overall saw Mercury Bay take the Winter Cup by just one win. Our club President Jim Dicks presented the cup to the Mercury Bay President Steve Williams and thanked everyone for a great day of bowls, company and a superb lunch.

All going well, our Club Opening Day for the 2025-2026 season will be on **Thursday 4 September** so I know there will be many club members looking forward to that.

If you are interested in playing lawn bowls you are most welcome to come down to the club on a Thursday (play starts 9am) or a Sunday (play starts 11am) once the season kicks off again. Our usual Friday afternoon social time continues regardless from 3.30pm and our coaching will get underway shortly after opening day as well.



Layke, Judy, John and Judith



Winter Cup Presentation



## Coromandel Sports Pavilion

With our Sports Pavilion Feasibility Study well underway and with the TCDC right behind us 100% this whole project is looking really good,

I know from comments around town to me anyway have been a bit mixed mainly from misinformation, so I want to explain in simple terms what we want to achieve.

Firstly the building of about 600 sq metres will house four permanent 10 pin bowling alleys this is only about 25% (¼) of the building and is designed to bring in income for the Club, the balance of the hall is for indoor sports use open to the public (out of town users) and members. The Combined Clubs in Coromandel has a very high maintenance program to keep the buildings and greens up to standard and to improve the property as an asset for the town.

Very simply, we need the income to keep going.

We also need an indoor facility for indoor bowls and we need to improve the outdoor bowls area and grounds, keeping up maintenance is costly.

Other indoor sports will be catered for and we hope to have a commercial kitchen/café style open for public and members use.

So if this Feasibility Study is positive we then start looking for options to fund it a very exciting project for Coromandel Town.

## The Colville Project

**Get involved: front gate beautification at The Colville Project!**

Kia ora, community!

The Colville Project (TCP) has been busy over the past couple of months sprucing up our roadside entrance, and we'd love for you to get involved! We've been clearing kikuyu and planting flax, with the dual aim of beautifying the area and providing additional food sources for our native birds.

While we can't open the main gates to the community just yet due to site activity, we've truly been feeling the regenerative effects of being outdoors in nature, even during these cooler winter months. We've really enjoyed starting two small plantings at the front of the land, and with this great planting weather, now is the perfect time to continue!

### What we're looking for

Our focus for this area is on native vegetation – plants that will nourish our birdlife and aren't too sensitive to the wind. Ideal plants include: tī kouka/cabbage trees, harakeke/flax, other short-er-growing natives like karo and red māpou/matipo.

We're specifically looking for native species that won't grow over three meters in height, and we're not planning to introduce non-native species in this area at this stage.

We're also on the lookout for clean, weed-free mulch materials such as beach shells or fresh mulch. These will be a great help with suppressing weeds and keeping that pesky kikuyu at bay.

### How you can help

The Colville Project is all about community, and your help makes a real difference! Please let us know if you have: native plants (as described above), clean mulch materials, time to lend a hand with planting and mulching.

If you can contribute in any way, big or small, please reach out to us! Email us: [admin@thecolvilleproject.co.nz](mailto:admin@thecolvilleproject.co.nz)

Let's work together to make TCP's front gate a beautiful and welcoming spot for our community and our native birds!



Offset your energy costs & enjoy backup support with a battery storage solar energy system. Call the specialists now

**SOLAR ENERGY**  
[www.goodenergy.co.nz](http://www.goodenergy.co.nz)

**GOOD ENERGY**  
SOLAR ENERGY SOLUTIONS

Phone 021 606835  
Email: [info@goodenergy.co.nz](mailto:info@goodenergy.co.nz)





## Ballet

By Marilyn Swan

### May I teach you the art of dance?

You can do it. People of all shapes and sizes can learn classical dance and find it rewarding.

If you wish to try a ballet bar (barre), come along. You will be made welcome by all involved. Silver Swans adult Ballet class is an excellent form of exercise for daily well-being, fitness, core stability and balance. Heartfelt, suitable music for expression and rhythmic timing is arranged for best results. Silver Swans is holistic exercise. It is good for the soul.

We know that ballet is enjoyed by many active older adults and all ages are welcome. Classical dance certainly provides a level of physical, cognitive exercise and social stimulation as good as any other form of dance class. The upright exercises in a ballet class will be guided correctly to align bones, then muscles. Compression of joints is avoided.

The Royal Academy of Dance proudly supports, and is accepted



by, Live Stronger For Longer organisation, advocating, reducing your risk of falls, improved physical function, and enhance your quality of life.

Local Silver Swans, dance with shared humour and appear to be (sometimes) the "loud" endorphined group at the cafe after class. We dance weekly for mental clarity, self confidence and joy.

There is a professional approach and a focused friendly atmosphere.

"I hadn't attended any formal dance classes for many years (make that around 50) but found Marilyn's teaching style



very inclusive, encouraging and extremely satisfying. I am getting fit, and enjoying the other participants company both during class and when we invariably socialise afterwards. Well worth it!" – Di (70)

My work as a teacher of dance began in 1976 when I opened a school in Motueka, for all ages. It is usual that ballet teachers internationally and in Aotearoa- New Zealand continue, in retirement to offer an aspect of their dance teaching. It is not unusual to hear a teacher in her eighties say she is "still working with her over fifty's". I am pleased to be one of the many dance teachers internationally, introducing Royal Academy of Dance Silver Swans adult Ballet classes in Coromandel and Whitianga. The Coromandel Town class, started in October 2019. Held, on Wednesdays in the Citizens Hall. Now there is a new class in the Whitianga Town Hall on Tuesdays which is into the fourth month. Both classes are held at 10am to 11.15am.

Marilyn Swan, Professional Teacher of Dance for 49 years. Royal Academy of Dance – Life Registered Teacher. RAD Silver Swans Licensee. Accredited Live Stronger For Longer. Code of Safe Practices apply. M: 027 336 5263 E: swanebbs@gmail.com





**Matt Hobbs**  
Plumbing & Draining Ltd

FROM LEAKS TO LUXURY

- WATER FILTRATION SYSTEMS
- WATER LEAKS
- SEPTIC SYSTEMS
- SPOUTING
- GAS FITTING
- RENOVATIONS
- DRAIN UNBLOCKING



**YOUR PLUMBING EXPERTS IN COROMANDEL**

CALL NOW

**021 0263 4206**

jo@matthobbsplumbing.co.nz  
www.matthobbsplumbing.co.nz

336 WHARF RD, COROMANDEL

**Everyone knows the best place to go fishing is near a mussel farm**

*Please follow these guidelines to keep everyone safe*

- Keep 30 metres** from working mussel barges at all times
- Don't tie-up** to a line being worked on
- Never cast your line** towards a mussel barge – farmers have been injured from flying hooks and sinkers
- No anchors.** Tie-on to a longline buoy or use approved mooring hooks
- Minimise your speed and wake**
- Never drive across the lines**







www.coromfa.co.nz

## Mana Retreat

Kia ora koutou – welcome back!

After a restful winter pause we're feeling refreshed and deeply grateful to return. Our winter retreat season is now unfolding, with a range of experiences designed to support rest, reconnection, and renewal.

We begin with a Mid-Winter Relaxation Retreat led by Jessica Dziwulska, a former local. The retreat is an invitation to slow down, nourish your spirit, and restore your energy in the peaceful surroundings of Mana.

We know many in our local community love joining us for Open Floor Dance, and we're excited to offer a few opportunities in the coming months to explore embodied movement. See below for what is coming up soon.

"The body is a great starting point for entering the present moment. The body is always here. You just have to bring your attention to it." - Eckhart Tolle

### Open Floor Dance Classes

Open Floor Dance returns to the Mana Octagon in August. Join us for a morning of embodied expression. Open to all bodies and backgrounds. No experience needed. Simply come as you are. Time: 10-11.45am. Cost: \$20-\$25 (sliding scale). Dates: **5, 19, 26 August**.

### Alive Retreat – Open Floor Dance & Yoga

With Sacha Paddy and Neal Ghoshal: **29-31 August**.

For those who feel drawn to deepen their practice, this upcoming retreat is for you. This immersive weekend offers a nourishing opportunity to embody presence, connection, and vitality. The yoga and dance practices are open to all with a willingness to move and explore.

In Sacha's words: "We will move, dance, connect, rest, and reflect – supported by the beauty of the land at Mana Retreat."

We invite you to move, rest, and reconnect, whether it's through dance, stillness, or simply being present with what is.

We look forward to seeing you soon.

Arohanui, The Mana Team.

[www.manaretreat.com](http://www.manaretreat.com), 07 866 8972, [be@manaretreat.com](mailto:be@manaretreat.com),  
608 Manaia Road, Coromandel 3581



## Real Estate Matters

### Q How is the local market in Coromandel, seems to be a lot of property not selling?

Yes, at the time of writing this the market has been quiet for some months with a lack of offers being made, or cheeky offers not being accepted.

Why, you might ask?

I think there are a couple levels of explanation to this. One is the focus of buyers and the public at large on interest rate movement. As the media keep talking of expected lowering of interest rates, the buyers hold back, a wait and see approach.

It appears we have pretty much come to an end of this or very close to the end of continued interest drop expectation.

Along with the lowering of interest rates there are properties being listed, with little being sold. This is giving the buyers more choice and more buyer power. Buyers are being selective by price and presentation.

Also we tend to be a holiday destination property market. So it can be quite seasonal with the sales.

Offers being made are likely subject to another house sale, so you see a stacking of contracts in this type of market. This definitely slows things down, you have a high fall over rate due to how slow sales are. If one fails to sell it can cause several others to fall over.

However we are finding the inquiry rates are increasing over the past few weeks. Buyers are more inclined to talk about making offers and asking about settlement times etc.

There is no evidence that we will see a price hike. It is more likely to be a slow crawl back. Likely see a settling of prices for a while.

At present if selling you need to list at a realistic price. You need to seriously consider your marketing and property profile. You will not sell if you have secrets in this market. Presentation is important. Create a difference to your property so people need to look at it. Get your property in front of as many sets of eyes as possible.

The market has reset prices, in some cases around 20% under the peak market. There is always a buyer, you need to recognise them when they are there and in this market treat them with respect, as they turn and walk away easily.

We find well marketed and well presented properties do sell in any market. There are buyers watching and waiting to move when they see evidence of good property.

It is interesting how much interest is out there for the true holiday destination property. People are keen to own holiday homes and maybe let them out for extra income.

We are hearing from investors at present. These buyers usually appear when they perceive the market to be bottoming out.

With the realisation of where the market now is, most new listings are somewhat more attractive to the buyers. This means older higher list priced property will either reconsider their prices or if not seriously wanting to sell, they withdraw from the market.

Should you wish to discuss these or other real estate matters, contact Glenn Wells - Licensed Agent. Harcourts Coromandel (licensed REAA 2008) [glenn.wells@harcourts.co.nz](mailto:glenn.wells@harcourts.co.nz) or 0800 735 788

## UPCOMING RETREATS & EVENTS

Bookings: [www.manaretreat.com](http://www.manaretreat.com)

AUG 1 - 4	Mid Winter Relaxation Retreat with Jessica Dziwulska
AUG 8 - 10	August Relax and Wellness Weekend with the Mana Team
AUG 12 - 14	Hormonal Harmony Retreat: Understanding, Empowering, and Celebrating Change
AUG 15 - 17	Shiatsu Retreat
AUG 21 - 24	Release, Replenish, Restore with Fiona Liu
AUG 29 - 31	Alive – Open Floor Dance & Yoga with Sacha and Neal
SEP 5 - 7	ReWILD for Men Retreat with Jaime Howell
SEP 12 - 14	Yoga Retreat with Juliet Forch
SEP 15 - 20	Mindful Self Compassion with Anna Friis and Mara Elwood
SEP 26-28	September Relax and Wellness Weekend with the Mana Team

## COMMUNITY EVENTS

Open Floor Community Dance AUG 5<sup>th</sup> & 19<sup>th</sup> | SEP 2<sup>nd</sup> & 9<sup>th</sup> | TIME: 10:00-11:45AM

[be@manaretreat.com](mailto:be@manaretreat.com) | 608 Manaia Road,  
Coromandel New Zealand. 3581  
+64 (07) 866 8972



New Zealand  
Certified  
Builders  
Association

NZ  
CB

**MICHAEL WOOD  
BUILDERS LTD  
COROMANDEL**

[mikewood@outlook.co.nz](mailto:mikewood@outlook.co.nz)

**021 143 1652**

• NEW HOMES • ADDITIONS/REPAIRS • RENOVATIONS • DECKS/FENCES



OUR *Office*

Coromandel Beaches Realty Ltd

Licensed REAA 2008

07 866 8260

105 Kapanga Road,  
Coromandel

# Harcourts

## Coromandel



*Glenn*  
**Glenn Wells**  
Sales Manager  
0800 735 788



*Raewyn*  
**Raewyn Trail**  
Sales Consultant  
021 0201 9111



*Maria*  
**Maria Blundell**  
Sales Consultant  
022 081 5817



**Coromandel** 4 Allman Drive  
Elizabeth Park Home | For Sale \$560,000



**Coromandel** 19 Flays Road  
Coromandel Hideaway | For Sale \$749,000



**Coromandel** 13 Mahakirau Road  
Barn In A Secure Eco-Sanctuary | By Negotiation



**Coromandel** 40 Victoria Street  
Heart, Soul and Taste | For Sale \$999,000



**Coromandel** 2886 Long Bay Road  
Panoramic Views | For Sale \$1,800,000



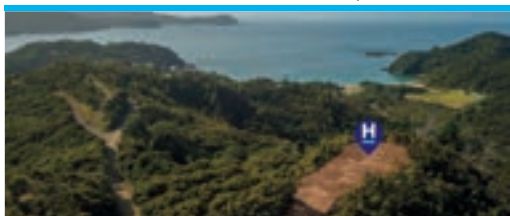
**Kennedy Bay** 1182 Kennedy Bay Road  
Refurbished Retreat | For Sale \$629,000



**Coromandel** 200 Edward Street  
Priced To Sell | For Sale \$499,000



**Little Bay** 973/975 Tuatēawa Road  
Little Bay Escape | For Sale \$785,000



**Little Bay** 896 Tuatēawa Road  
Grand Designs | For Sale \$699,000



**Tuatēawa** 56 Waihirere Road  
Oceanview Retreat | For Sale \$799,000



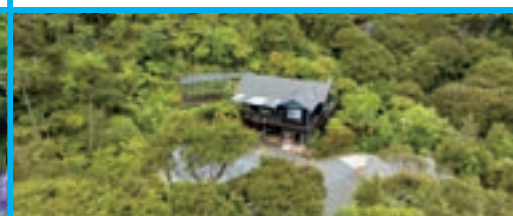
**Coromandel** 600 Buffalo Road  
Private Bush Block | For Sale \$639,000



**Te Rerenga** 1246 Whangapoua Road  
Price Reduced - All Offers Considered | For Sale \$875,000



**Tuatēawa** 20 Puriri Place  
Coastal Living Paradise | For Sale \$799,000



**Coromandel** 390 Driving Creek Road  
Birdsong & Bush | \$1,550,000



## Coromandel Garden Circle

By Sheana Goudie

We started our meeting this month a little earlier than usual, as we had a Mid-Winter Christmas Finger Food Lunch. What an array of very yummy food we had, with enough left over for a delicious afternoon tea! We were also surprised how many flowers people had for our competitions, being winter time!

This month we had Doug Parker who is a volunteer trapper and pest controller for Driving Creek Conservation Park as our speaker. He brought in a number of different traps and explained how they work and which one would be most suitable for our urban gardens. It was very interesting to learn about the various pests, the food they like (hence the best lures or baits) and how to entice the pests into the traps. Doug also shared some gold nuggets of information such as checking out YouTube for Cam Speedy about different methods to catch pests, checking out the Connovation NZ website where you can purchase pest control products including bottles of flavours and smells to use in traps, kohekohe flowers are like icecream to possums, and



Doug Parker was our guest speaker



"It's All Fake" competition in June



"Showy Citrus" competition in June

that kowhai nectar is toxic to the honey bee and can wipe out nearby hives. There were many other such nuggets of information, so many thanks to Doug for his very informative talk which the ladies found very interesting. Watch out pests who try and invade our gardens for flowers, fruit and vegetables!

Jeni shared some gems she found while trying to whittle down the four or five boxes to one of old Garden Circle meetings archival information dating back from the 1950s. Competition winners were addressed as Mrs Whoever and a new member was described as a lovely new lady who has joined the group. Garden Circle membership was in the 20s to 30s – we have around 60 paid up members this year.

Forum time covered a number of topics, which were varied and helpful to members – we have a lot of expertise in differing areas and it is great to have them share their knowledge with those having problems in their flower or vegetable gardens. Medrina told us about the apps "Plant Identifier" and "Google Lens", and shared how helpful these apps are to not only identify any plant in question, but how to treat problems, how they grow, the size they grow, and what situation they grow in best.

The results of the competitions for June were as follows:

Single Bloom: 1st Carol A, 2nd Lorraine L, 3rd Thelma N

Multi Bloom: 1st Lorraine L, 2nd Glenise R, 3rd Jeni M

Mini Bloom: 1st Medrina J, 2nd Linda W, 3rd Pauline M/Sheana G

Three Of A Kind: 1st Janine A, 2nd Linda W, 3rd Judy R

Arrangement: It's All Fake – 1st Jeni M, 2nd Linda W

3rd Medrina

Special: Showy Citrus – 1st Sheana G, 2nd Medrina, 3rd Lorraine L

Next Meeting: **Wednesday 13 August**

Venue: Meet in The Clubrooms

Start Time: 12pm

Activity: Soup and Bun Day – bring your own soup bowl or mug

Competitions: Arrangement: Around a circle or square

Special: Sassy Succulents



# WWW.PARRBUILDERS.CO.NZ





## YOUR LOCALLY OWNED AND OPERATED BUILDING COMPANY

*Servicing the Northern Coromandel and surrounding areas*

**Specializing in high-end new builds & renovations**

With expert craftsmanship, attention to detail and a trusted team, we bring your vision to life.

**ABOUT US**

Our commitment to customer satisfaction sets us apart. From concept to completion, we prioritize safety, quality, and strong working relationships every step of the way.

**Solutions**

- Luxury New Builds
- Premium Renovations & Extensions
- Decking and outdoor living spaces
- Insurance work



**Let's Build Together!**

Contact us today via our website  
[www.parrbuilders.co.nz](http://www.parrbuilders.co.nz)  
 Call us on 0277888043

Brett Parr is a licensed building practitioner and is also a member of the NZ certified builders association

# GD HAULAGE

Cartage Contractor

Demo

## 021 902268

[gdemus@outlook.com](mailto:gdemus@outlook.com)



## Coromandel Information Centre

Thrive Coromandel Trust is very grateful to the Coromandel-Colville Community Board for agreeing to partially fund the Coromandel Town Information Centre over the next two years.



This funding reflects the professionalism, patience, and the genuine care shown by the dedicated staff and volunteers of the Information Centre each day. They create a welcoming space seven days a week for people to ask questions and be supported as they find solutions. Their warmth, knowledge, and tireless commitment makes a world of difference to everyone who walks through the door.

Whether it's answering questions with a smile, guiding visitors to local gems, or providing calm support when events force plans to change, their work fosters vibrancy, resilience and connection in our community. They are often the first impression people have of our town—and what a welcoming impression it is!

We deeply appreciate everything you do.

– Thrive Coromandel Trust Trustees – Judy, Rob, Jan, Christine

Daffodils are blooming and the Cancer Society "Daffodil Day" will be held on **Friday 29 August**. This day symbolises hope for every New Zealander affected by Cancer. Please show your support to our wonderful local volunteers who will be out and about raising funds.

### Regular Happenings

The car boot sale continues the first Saturday of each month, Woollams Avenue carpark. From 9am to 12pm. It is \$5 per stall. It is a great time to declutter – after all as the old saying goes "one man's trash is another man's treasure".

The Coromandel Winter Market adds a lovely buzz to our weekends be sure to visit and support our talented stallholders. Every Saturday 9am to 1pm, Anglican Church Hall, Tiki Road.

## Chopper Chat

By Nigel Strongman,  
Coromandel Rescue  
Helicopter Trust



Very quiet month, with only six missions to the Peninsula. Four of these were inter-hospital transfers, one from Tairua, and one from Coromandel Town. The mission on 1 June, was for a male patient in his late 50's suffering a medical complaint, who was flown to Waikato Hospital in a serious condition.

A big thank you to all the people and organisations that contribute to our worthy cause. One of those groups is the Tairua Troubadors who have just finished this year's season of shows, they raise a fantastic amount of money. Fellow trustee, Jennie Turner writes the script, makes the costumes and produces all the productions. A truly talented and amazing lady. In the past, they have contributed many thousands of dollars to the Trust, as well as other charities.

Have a safe and enjoyable month.

Phone Nigel 022 670 1549

## Hon Scott Simpson MP for Coromandel



The past few weeks have been noticeably cooler around the Peninsula, which has been accompanied by occasional heavy rain. This resulted in some road closures around our region, but thanks to the work of our roading crews these were only in place for brief periods and conditions quickly returned to normal. These men and women do a terrific job, often in horrid conditions, to keep our roads open.

In political news, the Government has made improvements to the FamilyBoost scheme to put more money back into parents' pockets. There are many households still doing it tough, particularly those with young children because juggling childcare costs can put increased pressure on the weekly budget.

From 1 July, rebates on early childhood education fees increased from 25 per cent to 40 per cent of weekly fees, the maximum claimable payment per quarter increased from \$975 to \$1,560, and those with household incomes of up to \$229,000 became eligible to apply for the scheme.

These changes extend the FamilyBoost scheme to around 22,000 more households, while also benefiting those already accessing it. I encourage families to check if they qualify. Even if they haven't claimed before, now is a great time to sign up and get the support they're entitled to.

Finally, the Government has made a series of announcements which back up our commitment to restoring law and order.

We're introducing new offences to ensure those who assault on-duty first responders or prison officers spend longer in prison, introducing specific coward punch offences to ensure perpetrators receive tougher sentences, and introducing stronger penalties for low-level theft, like shoplifting.

It's shocking that our first responders, the people that provide urgent care to people in need, face assaults while they are carrying out their duties. These are our firefighters, paramedics, and other emergency personnel. Assaulting them puts multiple lives at risk, and there must be greater consequences for those acts of violence.

## Scott Simpson MP for Coromandel

### Contact me anytime

0800 550 330 • [scottsimpson.co.nz](mailto:scottsimpson.co.nz)  
[mpcoromandel@parliament.govt.nz](mailto:mpcoromandel@parliament.govt.nz)  
📞 [scottsimpsonmp](https://www.scottsimpsonmp.co.nz)



Authorised by Scott Simpson, Parliament Buildings, Wellington.



# FOR EXCEPTIONAL WINDOWS & DOORS

## FAIRVIEW THAMES

10 Millar Place, Kopu, Thames

Love  
your  
view

**fairview**  
EXCEPTIONAL WINDOWS & DOORS

P: 07 868 9105  
[office@fairviewthames.co.nz](mailto:office@fairviewthames.co.nz)  
[www.fairviewthames.co.nz](http://www.fairviewthames.co.nz)

# rangatahi OUR CHILDREN

## Coromandel Area School

By Tracey Adams



### Developing a “Work Ready” pathway at CAS

Lets face it, school as we know it and experienced it, isn't for everyone. For many young people being expected to sit in a classroom and learn using the current model of education is nigh on torture. This doesn't mean these students aren't talented or intelligent, it means that we need to find alternative ways to value and recognise learning. While literacy and numeracy are absolutely prioritised, we also need to find learning that is relevant to whatever pathway individuals are interested in. Our young people want to be at school, connect, to belong, to be growing as people and for this experience to be productive and recognise the talents and interests our students have. When our rangatahi leave school, they need to be ready for the wider world and adulthood, for many this means going into further training or education, for others this means going into work, or work based training.

During the past year we have been

working hard on developing pathways for all our students. We're not there yet, but we've made some important changes. A number of staff have been working on a “Work Ready Curriculum” together with support from team members at the Ministry of Education. This pathway seeks to meet the needs of our students who would have historically disengaged from school and left with no qualifications and who may have struggled to find employment out of school.

How this frames up is still a work in progress, but we are looking at alternative context based programmes that provide qualifications that are recognised by the New Zealand Qualifications Authority, but are not necessarily the traditional NCEA subjects. The Ministry of Education have a resource that outlines the attributes of students who are “Work Ready”. These are: having a positive attitude, communication skills, being able to work in a team environment, self-management skills, a willingness to learn, thinking skills, being resilient

As a school we are looking at how we ensure we are making these work ready goals clear to our students, how we teach them what they need to learn, and how we can find ways to monitor and assess their progress. For many this means having work

experience and ways to show they are Work Ready and employable. We are working with a number of employers in town and are continuing to find other opportunities for work experience for our teenagers. We are also exploring different training provisions that are accessible to us. A big thank you to our partners in the community who are supporting us with giving students opportunities to try different work, or in the case of CILT, partnering with training and learning opportunities. We are also providing students with work experience within the school. For some, this is helping out in junior classes, for others this is working alongside the school lunch team. When students show they are able to manage this consistently and reliably, we will look outside the school for other opportunities. We are trying to ensure our students are successful by implementing a well thought out process.

As always, nothing worthwhile is easy and everything takes time. Our intention is to continue to review and refine our processes until we are doing the very best we can for all of our young people. We'll keep you posted as things develop, and in the meantime if you have ideas or suggestions about who we can partner with locally, please get in touch with the school.

## Aotearoa ki Te Kūki Airani: CAS fundraising for Cook Islands trip

Coromandel Area School (CAS) students are a-buzz with anticipation, preparing for an incredible educational exchange to the Cook Islands this November. This life-changing journey is the culmination of fundraising and learning within CAS's culturally-lensed Te Puritanga (TP) class.

Launched in 2024 TP, meaning “To Hold the Line” or “To Endure”, reflects its mission: to foster connection to te ao Māori through reo, tikanga and an indigenous “take” on community, environment and society. Recognizing “ko te mokopuna te kākano” (children are the seeds of the future), TP offers alternative pathways to educational success for Māori and non-Māori alike.

The upcoming haerenga (journey) sees twelve rangatahi (youth) and eight adults (staff and whānau) examine cultural, genealogical and linguistic language ties shared by Aotearoa and the Cook Islands.

“Rarotonga and Aitutaki were staging points for our tūpuna on the way here,” explains says kaiako (teacher) Nane Kaye. “Rarotonga links to all the main waka of Hauraki, from Kupe's Matahaorua, to Te Arawa, Tainui, Mataatua and Horouta. Whitianga is named for Kupe's transit through modern Mercury Bay. Te Arawa and Tainui lend most of pre-European Hauraki its place names, while Mataatua graces us with the Ngāti Pūkenga people (Manaia). Horouta waka gifts us the Ngāti Porou people (Harataunga), who also descend from Paikea the whale rider. Cook Islanders say he was born in Ma'uke, one of their southern islands.”

TP's travellers will spend time in Cook

Islands' capital, Rarotonga, and experience life on the smaller outer island of Aitutaki.

Benefits for CAS rangatahi are immense. These include opportunities to glean insights from observing first-hand, traditional land and sea-based living, tangata whenua run government, and time in communities where Māori language, custom, values and spirituality are the norm.

Students will be encouraged to reflect on and develop their own connections with community and environment. It is hoped “Kūki” lessons and experiences will inform future development of their feelings, opinions and actions around how we as New Zealanders treat the environment, one another and even ourselves. “Ultimately, this journey will deepen their understanding of who they are and their links to the wider world,” says Kaye.

The haerenga showcases CAS's commitment to providing meaningful and relevant educational experiences that connect students to their heritage and empower them to empower others in the future.

TP's students and whānau warmly thank our community for the awesome support shown this year: at The Keltic Fair, our kai stalls (Whitianga, Coromandel Town, Thames), our Housie night, and the Matariki Market; and through our raffles and t-shirt promotions (“Got Your Back” and “Aotearoa ki Te Kūki Airani”). Tēnā tātou katoa!

Fundraising continues this term with raffles, a movie night and more! Your support can make a difference! We invite online contributions to: Account Name: Coromandel Area School Board. Account No: 12-3659-0096489-00. Reference: Fundraising/donation/your name.

## Coromandel Youth Group

At Hauraki House

A big thank you to TCDC!

We love the playground upgrade at Hauraki Reserve, it provides hours upon hours of good outdoor entertainment and exercise for our tamariki!

Youth Group is for children 5-15yrs. Play, socialise, create art and crafts, enjoy the park and playground or chillax and enjoy the fresh fruit supplied by Woolworths.

### School Term Times

Tues, Thurs, Fri 3-5pm

### For 10yrs and up

- Spotlight Friday 15 August - 5.30pm - 7.30pm.

- Miniatures Game Club

Wednesdays 3-5pm

Parents/Caregivers, please make sure your children come inside and sign in upon arrival.

For more information: during open hours, call in at Hauraki House, telephone/text us on 027 217 9206 or email coromandel youthgroup@gmail.com.

This programme is made possible with kind donations & grants from: Lottery Waikato, COGS, Trust Waikato, D V Bryant Trust, AGT & NZCT. Local supporters: Star & Garter Hotel, Woolworths. Thank you!



## Colville Bay Preschool

By Emma Corner, kaiako



Tēnā koutou. We've had an exciting and busy Term 2 here at Colville Bay Preschool, and we are so grateful for the wonderful experiences we've shared as a community. Firstly, we'd like to extend a warm welcome to Anahera and her whānau, who have joined our preschool family. We are all looking forward to getting to know you and your little one as you begin your learning journey with us.

We would also like to express our heartfelt thanks to the many people whose generous support and dedication have made this term a success. A huge thank you to the Coromandel Lions Club for their very generous donation, and to all of our whānau for their thoughtful contributions to our raffle prizes and for all the hard work in organizing and running a successful pho (Vietnamese noodle soup) fundraiser night. A special thank you also goes to Elizebeth, whose delicious baking is sold each week at the Colville Store, with all proceeds going to support our preschool. We are incredibly grateful for your kindness and generosity.

Another big shout-out goes to Mark, a local Colville resident, who is raffling off a magnificent electric guitar to help raise funds for our preschool. We also want to say a massive thank you to Emma and Elizabeth who organize and prepare the delicious pizzas at our pizza night fundraiser held at the Colville Café. Your support means the world to us.

To cap off Term 2, we had the joy of celebrating Matariki with Colville School and our wider community. The event was filled with manaakitanga, whanaungatanga, and aroha, as we shared waiata, kai, hangi, pūrākau, and hautapu. The waiata and haka from the Colville School tamariki were powerful, the kai and hangi were mouthwatering, and the pūrākau and hautapu, delivered by James Webs were deeply moving. It was beautiful to witness the community come together to make this Matariki celebration so special.

At Colville Bay Preschool, we pride ourselves on being a community-focused preschool, where every child is valued and cared for as part of our whānau. If you're looking for a nurturing, supportive environment for your little one, we have spaces available Tuesday to Friday, with transport from Coromandel Town. We offer a van service from Coromandel to Colville twice a week, making it even easier for families to access our preschool.

We welcome you to come and visit us to see if this is the right place for you and your whānau. Our doors are open Tuesday to Friday, 8.45am-3pm, including during term breaks. We offer 20 free hours for children aged 3+, and WINZ subsidies and Family Boost are also available.

Haere mai! We'd love to meet you and have you join our vibrant, caring preschool whānau.

## Coromandel Community Preschool

By Shivawn Elliott



Kia ora kotou. And just like that another month and another year has flown by! Preschool turned 19 years on the 24 July. Thank you to the tamariki and their whānau who helped us celebrate our special day. It was a good chance to come together and reflect over the years and share some special memories.

We are running another Father's Day Raffle this year to help raise funds for the next phase of our playground upgrade. Thank you so much to everyone who donated items. Tickets are now on sale for \$5 each and can be purchased from the main office.

With a few fine breaks in the weather, the children have been able to get back out in the community and do their outings, including a few trips to the new playground!

During the month of July, we celebrated a birthday for Nature. We also welcomed River, Jordan and Erika to the centre.

We have some spaces available on our over two's side. Please feel free to pop in and grab an enrolment form, or alternatively send us an email at [coropreschool@xtra.co.nz](mailto:coropreschool@xtra.co.nz).

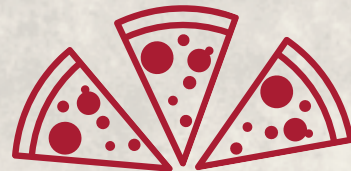
Check out our latest education review at [www.ero.govt.nz/review-reports/coromandel-community-preschool](http://www.ero.govt.nz/review-reports/coromandel-community-preschool).

The centre operates Monday to Thursday 8am-4pm and Friday 8am-3.30pm. We are situated at 155 Pottery Lane (behind the Four Square). Please feel free to call in at any time for a visit.



Kane on the town playground

GIVE A LITTLE SUNDAYS



**\$12 PIZZA SUNDAYS**

**\$1 from every pizza  
is donated to a  
local community service**

**ALL DAY EVERY SUNDAY  
DINE IN ONLY**

  
**STAR & GARTER  
HOTEL**  
Coromandel Town

CONDITIONS APPLY



**BUILDING CENTRE**  
**PH: 866 8848**  
*"We'll see you right"*

# mahi toi ARTS

## Driving Creek Pottery Doings No. 6

By Matilda Halley

### Resident Profile: Jordie MacDonald

Jordie MacDonald says of Driving Creek, "There's no other place that fosters such experimentation, freedom and connection to place." This is the third time the Ōtautahi-based potter has visited the pottery: first as a workshop participant, then as a summer tutor, and now as an artist in residence.

Jordie grew up in Blenheim and was introduced to the potter's wheel at fifteen through the Marlborough Community Potters. Instantly hooked, she spent all her free time after school at the clubrooms. She later studied and worked in conservation and construction, but her connection to clay remained strong. Her background in ecology and building have filtered through to her clay practice, where she sources local materials to make pots that reflect their environment.

In 2015, Jordie moved to Whangārei and found community and mentorship at the Quarry Arts Centre, especially under master potter and woodfirer Julie Cromwell. Determined to deepen her practice, she convinced both Julie and the Quarry to host the Otago Polytechnic Diploma in Ceramic Arts. She became their first student in 2022, and since then, around fifteen others have enrolled.

During her four-week residency, Jordie is creating a body of work made entirely from Coromandel materials. Access to local clay and Barry's material processing equipment makes this way of working possible. She also sees access to community as a vital part of the Driving Creek experience, sharing work, meals and ideas with other residents and staff.



Jordie plans to woodfire the completed work and hopes to exhibit it in Ōtautahi. Having experienced the residency programme both as a staff member and now as a participant, she sees it as "a landmark moment in the personal and creative lives of so many".

Preceding Jordie in June were potters in residence Sinclair Bijker (Queensland), Davey Marshall (Granity), Helen Bakker (Auckland), Nicole Gaston (Wellington) and painter Phil Kavanagh (Dunedin).

Our next pottery workshop is a seven day experimental making and woodfiring course, taught by master potters Aaron Scythe (Whanganui) and Sergei Shatrov (Victoria), starting **Sunday 31 August**. For more information on this and other workshops, head to [www.drivingcreek.nz/workshops](http://www.drivingcreek.nz/workshops).



Driving Creek potter in residence Jordie MacDonald with one of her pots made from Coromandel clay

PHOTO BY COURTNEY RODGERS



[WWW.JAMESDRAINAGE.CO.NZ](http://WWW.JAMESDRAINAGE.CO.NZ)

Excavators | Tip Trucks | Bobcats  
Auger & Chain digger hire  
Skip Bins | STMS Services  
Septic Tank Services | Portaloo Hire

**1020 Tiki Road, Coromandel**

**p. (07) 866 8308**

**e. [jamesdrainage@xtra.co.nz](mailto:jamesdrainage@xtra.co.nz)**

**Commercial sections  
and units available**

For details please visit  
[www.coromandelbusinesspark.co.nz](http://www.coromandelbusinesspark.co.nz)

## Impressions exhibition

Artwork by Richard Chrisp **Sunday 3 to Friday 15 August** at Hauraki House.

Preview on **Sunday 3 August** at 11am (BYO wine).

# Purnell

LAWYERS

### BRENDA FLAY, SOLICITOR:

Travels to Coromandel on Tuesdays.

Please phone the Thames Office (868 8680) for appointments.

**PARTNERS:** Hayley Green and Brenda Flay

**THAMES OFFICE:** 611 Mackay Street, P.O. Box 31, Thames

**PHONE:** 868 8680 **EMAIL:** [info@purnell.nz](mailto:info@purnell.nz)

**COROMANDEL OFFICE:** 150 Pound Street

### OUR SERVICES

ESTATE PLANNING / PROPERTY / COMMERCIAL

[www.purnell.nz](http://www.purnell.nz)

THAMES

WHITIANGA

COROMANDEL



## Pastel Artists Coromandel

By Rosemarie Murphy

Pastel Artists Coromandel members have been working hard.

Kyoko entered last month's Pastel Artists of NZ newsletter competition for kitchen vessels and was delighted to win a Merit for her work titled "Silver Jug and Apple".

The judge was Deborah Bays and her remarks for Kyoko's painting were: The artist's use of a bold and painterly drawing style in this painting is what sets it apart. This alla prima style creates a sense of energy and immediacy that engages the viewer. The simple subject of a vessel and a piece of fruit with its reflection becomes a strong abstract image. Silver is a notoriously difficult subject in that visually it is nothing but reflections. In this painting it is well done and the reflection of the apple strengthens and enlarges the red shape of the apple in the focal point. A simple subject turned into a compelling painting.

Congratulations Kyoko.

We welcome a new member Annette to our group and we all joined Allan at the Pepper Tree to celebrate his 94th birthday.

We will continue to meet every Monday morning from 9am until 12noon for a while in Rose's Studio at 860 Tiki Rd, Coromandel Town. Call in and have a look to see what we are doing.

Contact Allan Beaver 07 866 8053 or Saskia Reimersma 027 296 1670



## Coromandel Players

By Don Hughes

Our thanks to those people who attended our performances of the challenging one act plays in June, and those who responded positively to the open letter on our financial and membership problems.

With the latter limiting our range of plays, I would appeal, yet again, to the men in our community to join us and, hopefully, take part in our productions.

The reference to productions leads me into news about our plans for the rest of the year. In the next couple of months we hope to stage at least one "Radio Play". Those readers of a certain age will remember, in the days of steam radio, listening to plays specially written for broadcasting, or adaptations of stage plays. We will be turning the theatre into a recording studio, with, hopefully, many of you attending as the "invited audience".

The first play we are considering is a radio play, a Sherlock Holmes mystery, and we have tentatively set the dates of **5, 6 & 7 September**. Watch out for posters or listen for news on Coromandel More FM. Definite dates and details will be put on our Facebook page as soon as they are finalised. So dust off the deerstalker hat, the tweeds, and the ladies some dazzling dress and prepare for some light entertainment, mulled wine and supper!

Then, in September, we look forward to two shows from visiting performers. Firstly, on **Friday 12 September** we have a return visit from the NZ String Quartet, a real treat, and on **Friday 19 September**, a return visit from Helen Moulder with her new play "Cynthia & Gertie Ride Again"!

So, a little to watch out for!



# We promote your art event for you for free!

For more information and to sign up your events for this year's 2025 Artbeat Spring Festival:

- Get in touch with Fiona Cameron, Chair, Creative Coromandel, [chair.creativecoromandel@gmail.com](mailto:chair.creativecoromandel@gmail.com), 021 759 120
- Or check out our website: [coromandelartbeat.nz](http://coromandelartbeat.nz)



# mahi toi ARTS continued

## Arts Tour

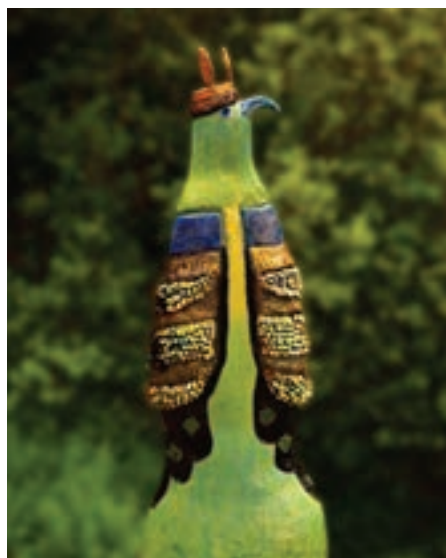
By Charlene Scott

This year's Coromandel Open Studios Arts Tour will be held on the weekends of **4-5 and 11-12 October**, with an exhibition running the full duration of the nine days at the Hauraki House Gallery. This is when local artists open up their studios for the public to come and look at their work. This year we have 34 artists participating with five of them being new to the Tour. We featured two of them in last month's Chronicle and here are the other three.

### Iona Matheson

Iona recently moved to Coromandel after cyclone Gabriel displaced her from her home in Piha, and completing an artists residency at Driving Creek. Her latest collection of mythological birds are inspired by Coromandel's lush landscape. Each sculpture a unique creation, reflecting the beauty and diversity of the avian world.

"My sculptural work is influenced by a fascination of the interwoven relationships between flora and fauna and geological formations. These sculptures bring together ceramic, cast bronze and glass, with recycled paper and leaves. They reveal textural layers evocative of this land, decorated with shimmering colours and ceramic glazes. Priority always given to working with recycled/reclaimed media such as paper clay



Sculpture by Iona Matheson



and pulps with a commitment to environmental sustainability."

Iona has extensively exhibited her work throughout Aotearoa and managed several large-scale sculptural projects in Waitakere city including a giant Moa Mountain at the Massey Leisure Centre. She has more recently been delivering hand building sculpture workshops at Driving Creek with another artist residency in the pipeline.

For her first appearance in the Arts Tour, Iona will be joining Kay Ogilvie in her studio 'The Gannet's Nest' in Wyuna Bay.

### Matilda Halley

Originally from Tokomaru Bay, Matilda moved to Coromandel five years ago with the hope of honing her craft as a potter. She has had the privilege of apprenticing with Petra Meyboden, as well as training in Japan and India, working at the Leach Pottery in Cornwall and most recently, as a member of the production pottery team at Driving Creek under the guidance of Callum Trudgeon.

"I am inspired by traditional approaches to pottery, using local materials to make everyday pots for local people. I enjoy working within the confines of what we



Matilda Halley and her pottery

have at hand, using mostly local clays and rocks and ash to make glazes. The pots are fired in the wood and gas kilns here at Driving Creek. While this approach to pottery is labour intensive, it is also deeply satisfying and connecting. I hope each piece carries its own quiet personality and brings a sense of connection whenever it's used."

Matilda will be based at Driving Creek Pottery & Railway for her first Arts Tour.



Artwork by Judy Wood

### Judy Wood

Judy has visited Coromandel since she was a child, coming with her parents, Ann and Dick McNair, to camp at the end of Te Kouma Bay Road every Christmas. She eventually moved to Coromandel in 2023, taking over her parents home in Te Kouma after they decided to move into a simpler home in Coromandel Town.

She has been painting for over 25 years beginning with learning watercolours from her mother then settling on acrylics.

"I would describe my artwork as "abstract landscapes". The paintings challenge the viewer to look into the imagery to see the ruggedness of the New Zealand mountain ranges, the textures of the bush and wetlands, and movement of the oceans."

She also creates jewellery and examples of both her paintings and her jewellery will be available to view at her home studio in Te Kouma during the Arts Tour.

The 2025 Arts Tour guides are available now! Collect your copy from The Coromandel Information Centre or The Source. Or go to our website [www.coromandelartstour.co.nz](http://www.coromandelartstour.co.nz) for more info about the tour and our artists

## Natural Medical Centre

The natural alternative for all your health requirements

For appointments,  
phone or text: 021 046 1647  
or email: [annk-b@ps.gen.nz](mailto:annk-b@ps.gen.nz)

[www.naturalmedicalcentre.co.nz](http://www.naturalmedicalcentre.co.nz)

### Ann Kerr-Bell

B.Hlth.Sc. (Comp.Med.)  
Adv.Dip.Naturopathy  
Adv.Dip.Med.Herb. MNZAMH

Naturopath  
Medical Herbalist  
Nutritionist  
Massage Therapist

## Coromandel Art Group

By Lindsay Nicholls

Another month gone by... winter is a great time for catching up on our work.

We are busy working long term towards our annual exhibition in January, but in meantime we get lots of diversions with the enthusiasm of the group.

There's always someone coming in with a new product or idea to share. We have spent many a dollar on new stuff, it's fun to turn up each week to see what else someone else has discovered to help us in our art journey. If this sounds like you, pop in for a chat and cuppa on Thursday morning, we are there 9am to 12pm.

Contact Lindsay 027 494 9738



# Our Coromandel

News from Thames-Coromandel District Council



August 2025

## The latest on the Local Election

### Nominations for the 2025 Thames-Coromandel District Council election close on 1 August.

After this date, our Council will publish a list of all candidates running for our local Mayor, Councillor or Community Board Member positions in this year's election.

Remember, you must be enrolled in order to have a vote on Election Day (Saturday 11 October). To check or update your enrolment details, visit [vote.nz](https://vote.nz)

And it's not just locals who can vote. If you own a property in the district but don't live locally, you have the chance to vote via the Non-Resident Ratepayer Roll. Visit [tcdc.govt.nz/elections](https://tcdc.govt.nz/elections) to see if this applies to you. While you're there, check out Chief Executive Aileen Lawrie as she speaks with CFM about what the election means for our communities.



If you're voting or standing as a candidate in our district, be sure to read our 2025 pre-election report. It will help you understand more about our Council – who we are, what we do and some of the challenges that lie ahead for us. You can read it here: [tcdc.govt.nz/PER-2025](https://tcdc.govt.nz/PER-2025) or a local service centre can help to print it for you.



## NEWS IN BRIEF

### 2025/26 RATES REBATE

Applications for the 2025/26 rates rebate year from Te Tari Taiwhenua | the Department of Internal Affairs are now available. If you qualify and would like a helping hand to apply, come and see us during office hours at our Coromandel service centre, 355 Kapanga Road, any time before 30 June 2026.

Check if you're eligible and find out more at [tcdc.govt.nz/ratesrebate](https://tcdc.govt.nz/ratesrebate)

### NETWORKING NEWS

At its last community networking session, the Coromandel-Colville Community Board:

- Caught up with the Life Education Trust, a district grant recipient that runs health and wellbeing programmes for tamariki and rangatahi. The trust visits three primary schools in the Coromandel-Colville ward.
- Heard from Coromandel Taxis about their proposal for a dedicated taxi stand in the town centre. Council's Roding Manager will investigate and report back to the Board.



### PARKS AND HARBOUR TOUR

The Board was out and about with Council staff last month, touring the local parks and harbour facilities for a briefing on recent and upcoming projects.

Sites visited included the playground and carpark at Hauraki House, the community gardens in town, the bike and dog parks on Hauraki Road, and the boat ramps at Wyuna Bay, Long Bay Reserve and Jack's Point.

They also received an overview of operations and works planned at Arikī Tahi Sugarloaf Wharf and Hannafords Jetty.



Our next Coromandel-Colville Community Board meeting will be on 2 September at our service centre, 355 Kapanga Rd, Coromandel Town from 9am.

[@ThamesCoromandelDistrictCouncil](https://www.facebook.com/ThamesCoromandelDistrictCouncil)  
[coromandel\\_tcdc](https://www.instagram.com/coromandel_tcdc)  
Get our free eNewsletters!  
[www.tcdc.govt.nz/subscribe](https://www.tcdc.govt.nz/subscribe)

## What's coming to your backyard?

At the end of June, our Council adopted the Annual Plan for 2025/26, setting our project

priorities and budgets. We're mostly sticking to the course set in our Long Term Plan, but we had to make a few tweaks because of unavoidable cost increases and new government reforms, especially to water services. We kept the average rates increase to the 7.7% forecast in the Long Term Plan, and we raised some of our fees and charges to keep up with inflation or increases in the cost of delivering some services.

### WANT THE DETAILS?

- What's planned in your neighbourhood: [tcdc.govt.nz/annualplan2025](https://tcdc.govt.nz/annualplan2025)
- New fees and charges: [tcdc.govt.nz/fees](https://tcdc.govt.nz/fees)
- Check your 2025/26 property rates: [tcdc.govt.nz/rid](https://tcdc.govt.nz/rid)



[tcdc.govt.nz](https://tcdc.govt.nz)

customer.services@tcdc.govt.nz  
Private Bag, 515 Mackay St, Thames  
Phone: 07 868 0200

# mahi toi ENVIRONMENTAL

## MEG

By Steph Parkyn

Our volunteer kiwi listeners have had some amazing experiences this winter. Some have been juggling recording multiple calls all at once and two separate people (in Port Charles and near Waikawau) have turned around to find kiwi walk right up close to them! We are so lucky to have kiwi nearby in our bush backyards, this is real kiwi country!

On **Sunday 3 August** you can hear more fascinating facts about our Coromandel brown kiwi from Kiwi Practitioner, Diane Prince. Diane analyses the results from the MEG kiwi listening we undertake in the northern Coromandel each year. Come along and find out how our Coromandel kiwi are faring. 5pm, **Sunday 3 August** at the Pepper Tree Restaurant.

### What about weasels?

Our trappers have been noticing they are catching more weasels than usual in the last few months in our mustelid trapping programme that reaches from Coromandel to Port Charles. We tend to talk more about stoats and ferrets because of their greater impact on kiwi, but weasels may have a larger impact on other rare species like our



lizards and geckos.

Weasels are the smallest and least common of the mustelids that have been introduced to New Zealand, but they can still have a big impact on our lizards, geckos, invertebrates, and birds (by targeting eggs/chicks or small adult birds). Apparently, their favourite food is mice, but they were brought here to Aotearoa in the late 1800s to help control the rabbits, so are capable of taking animals as large as a rabbit back to their dens.

How do you tell them apart? A weasel does not have the black fluffy tip of a stoat tail.

Ferrets are the largest mustelid introduced to NZ and weasels are the smallest.

### Spotlight on native trees

At our last winter lecture, the subject of bird food sources came up, and an audience member mentioned the tawāpou – a small coastal tree with large berries that ripen in autumn and kererū love. If you're wanting to add a beautiful native tree to a frost-free spot in your garden that can also be an important food source for kererū, try the tawāpou!

Ngā mihi nui.



Taxidermy ferret, stoat and weasel

Follow us on Facebook or Instagram, contact us at [info@meg.org.nz](mailto:info@meg.org.nz) or make a donation by visiting our website [www.meg.org.nz](http://www.meg.org.nz)

## Coro Landcare

By John Veysey

The government factory making poison baits goes under the trade name of Pestoff.

Pestoff rat baits are made in the same government factory which makes the 1080 baits. The rat baits cost you a pretty penny. If you buy in bulk at your local store 3 kg cost \$130 = \$43 a kilo.

When Moehau is bombed with poison they drop three kilos of baits over every hectare. Four and a half thousand hectares means a pretty large income for the government's bait-making factory.

The entire Pestoff operation has shown no benefit to the environment and appears to be all about money. The profits gained through the aerial dropping of Pestoff baits has attracted overseas companies so now we see that huge international business, Rentokil, has taken over the operation of aerial poisoning over the whole of the Coromandel peninsula. DOC staff have little or nothing to do with this poisoning any more. The aerial distribution is managed by Rentokil staff, the profits going overseas, and the ground poisoning is carried out by enviro-groups such as MEG, Mahakirau and Predator-free..

**WHITIANGA FLOORING XTRA**

[www.flooringxtra.co.nz](http://www.flooringxtra.co.nz)



# Spring Sale

Carpet, Laminate, LVT + Sheet Vinyl On Sale Now\*

Whitianga Flooring Xtra 68 Albert Street, Whitianga  
E: [whitianga@flooringxtra.co.nz](mailto:whitianga@flooringxtra.co.nz) P: (07) 866 2836

## Accountants

### The Hauraki Taxation Service Limited

- For out of town independent accounting advice
- Established 1982
- Approved agents for Inland Revenue Department
- Offices in Coromandel Town & Thames

myob

xero

CASHMANAGER Smart Accounting Software

**95 Kapanga Road, Coromandel**  
**Ph/Fax: 07 866-8660**  
**Em: [coro@haurakitaxation.co.nz](mailto:coro@haurakitaxation.co.nz)**



# hākinakina SPORT

## Upper Coromandel Landcare Association

By Reihana Robinson

UCLA has been attempting via public and private communications to end the indiscriminate, aerial poisoning of the top of the Peninsula for decades. After meeting with initial success and positive interactions resulting in extensive trapping contracts that employed locals and encouraged pig hunters, the regional council (then known as Environment Waikato) joined forces with the Department of Conservation and utilised the weight of government legislation to “bomb” Moehau with toxin 1080.

Poison 1080 is not a one-shot deal. The poison business therefore begins to boom and mother nature is hit over and over. This year the poison regime descends on our precious lands yet again.

Even DOC scientists have their own research to show how rats bounce back within a 12-month period boosting their numbers to three or four times what were there originally, Possums that birth only one offspring a year also return.

The by-kill of other oxygen-breathing animals, birds and insects goes undocumented and our healthy kiwi population are threatened by poisoned insects.

Local residents must not uptake water for a specified time. Possum carcasses end up washed down the mountain to where dogs can scavenge and die horrific deaths.

In the distant past, Moehau was managed by the NZ Forest Service that sent teams of hunters, who would often have camps on private farms and would spend long periods permanently hunting.

After the Department of Conservation (DOC) was formed in 1987 hunting teams continued to be sent up to Moehau for short periods and they lived in accommodation inherited from the Department of Lands and Survey.

In the early 90's DOC launched and subsequently abandoned their 'total eradication' of possums in readiness for their first attempt to cross the Peninsula with a predator fence which was supposed to traverse the range following the Te Hope Valley over to Sandy Bay.

By 2004 goats were on the death list and rather than kill and harvest wild goats DOC carried out a “wall of death” total slaughter.

DOC however continued to support trappers and pig hunters on Moehau for at least a decade.

Hard working trappers kept tracks cut back and cleared trap lines. Inhumane poisons were used in the traps (animals taking weeks to die from internal bleeding) and carrion-eating birds would also suffer. Also kill traps for stoats were used.

In the past DOC also carried out regular research to document their success and failures. There has been no such work carried out in recent years. Locals are not kept in the picture which is a loss as those charged with the kaitiaki of Moehau must be aware of the interconnectedness of how we care for Mother Earth/Papatūānuku.

UCLA supports hunting and trapping and the use of cyanide as it is considered a humane poison killing within minutes.

## Coromandel Croquet Club

By Raewyn McKinney

I am writing this as the Wimbledon Championship Tennis tournament comes to an end.

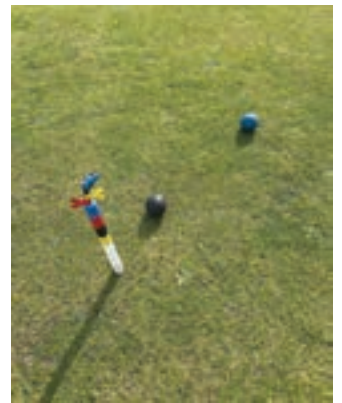
Not a lot of people realise that the full name of the club that hosts this Grand Slam tennis tournament is The All England Lawn Tennis and Croquet Club. This club was first formed in 1868 as the All England Croquet Club and held its first croquet competition in 1870. The name was changed to the present name in 1877. Initially it was felt that lawn tennis would never become as popular as croquet, however by 1882 lawn tennis had overtaken croquet as the most popular activity. Today the name continues but only for sentimental reasons.

In Coromandel however, croquet still has a small but loyal following. We enjoy the physical and mental challenge as well as companionship out in the fresh air in beautiful surroundings.

If you would like to try croquet, we meet at 9.45am on Tuesdays for “association croquet” and the same time on Fridays for “golf croquet”.

We provide all the equipment and a period of coaching before you need to commit to joining the club. Casual players are welcome to come along for a payment of \$5 per day. If you would like to join us, contact Lyn on 027 466 2661 for more information.

The club is situated in Woollams Ave next to the Bowling Club.



## Coromandel Recreational Fishing Club

By Natalie le Maitre

Welcome to our new committee: President/Secretary – Natalie le Maitre, Treasurer/Secretary – Sarah Sanders, Committee – Stephen Joss, Cheryl Schuelke, Nadia Burrell, Jo Robinson and Rebecca Greenhill.

August Fish of the Month – Adults is trevally, Junior is parore. Weigh your catch in at Salty Towers.

Membership fees for 2025-2026 season is now due. Adults \$40, family (two adults and two children) \$90, individual child \$15, and Gold card holders \$30.

### 2025-2026 tournaments dates

- 25th Anniversary of CRFC Competition – **Sunday 26 October**
- Christmas Party & Members Only Competition – **Sunday 30 November**
- Anniversary Weekend Competition – **Sunday 25 January 2026**
- Classy Chicks – **Saturday 7 March 2026**
- Take a Kid Fishing – **Saturday 11 April 2026**
- King's Birthday Competition (Land Based) – **Sunday 31 May 2026**

# COROMANDEL PLUMBING

(1986) LTD

1490 Tiki Road, Coromandel

CRAIG DUDSON

Phone/Fax 866 8814  
027 482 1291



**Plumbing, Drainlaying and Gasfitting**

# CORO GYM

COROGYM@GMAIL.COM

# Classifieds

Classifieds cost 30 cents per word – please email your words to [corochronicle@gmail.com](mailto:corochronicle@gmail.com) or call/text Debbie on 021 235 6648.

## PROFESSIONALS

**A COROMANDEL PLASTERER.** For new homes and all renovation requirements I offer 25+ years' experience for a professional plastering finish. Doug Marsters 022 019 9255.

**ABBY'S HEALING HAVEN** 021 352 486. Chakra and energy clearing, crystal calibration 90 minutes - \$140, appointments via video link or in person. Organic Ayurvedic facial massage, 30 min - \$55. Breakthrough Tapping session, 60 min - \$100, an effective self mastery method for dealing with all stress and anxiety also self sabotaging behaviors. Online or in person. Intuitive Tarot and oracle reading, 45 minutes - \$60. See more at [www.abbyshealinghaven.com](http://www.abbyshealinghaven.com).

### ALUMINIUM JOINERY

**MAINTENANCE** Locks, handles, hinges, wheels. Call or text Mike, Coromandel Glass 027 661 0190.

**BALLET CLASS** Silver Swans for Adults. Venue: Coromandel Citizens' Hall, Wednesdays, 10am to 11.15am. \$15. Phone Marilyn Swan 027 336 5263. Royal Academy of Dance - Life Registered Teacher. Silver Swans licensee. Visitors are welcome.

**BLINDS, CURTAINS, SCREENS, AWNINGS & SHUTTERS.** Please phone or email Whitianga Flooring Xtra for your free in-home consultation (07)8662836 or [sales.whitianga@flooringxtra.co.nz](mailto:sales.whitianga@flooringxtra.co.nz)

**BRICK AND BLOCK LAYER.** Laurie Gordge (07) 866 8200, 027 494 9573, [buddy10@xtra.co.nz](mailto:buddy10@xtra.co.nz).

**BRICK AND BLOCK LAYING SPECIALISTS.** L.B.P. Phone Joel 021 0234 0210.

**CARPENTER WANTING WORK.** Alterations, new houses, additions, no job too small, licensed building practitioner. Ph 021 675 575.

**COROMANDEL GARAGE DOORS.** Ph: Gerry Packo 022 453 2188. New installs, new motors, new remotes, door servicing, new parts, we do it all. E: [corogaragedoors@gmail.com](mailto:corogaragedoors@gmail.com); W: [www.corogaragedoors.co.nz](http://www.corogaragedoors.co.nz).

**COROMANDEL HONEY LTD.** Local beekeepers. Honey for sale and manuka sites wanted. Call Evan on 021 533 826.

### COROMANDEL STUMP

**GRINDING.** Local operator based in CoroTown. Contact now 027 451 2224 or email [dynamictreecare@gmail.com](mailto:dynamictreecare@gmail.com).

**FLOOR SANDING & SOLID TIMBER FLOORING INSTALLATION.** Please phone or email Whitianga Flooring Xtra for your free measure & quote (07)8662836 or [sales.whitianga@flooringxtra.co.nz](mailto:sales.whitianga@flooringxtra.co.nz)

**GENERAL HOUSE & PROPERTY MAINTENANCE & HANDYMAN SERVICES.** Phone Mike 027 240 9084. Coromandel and surrounding areas.

**GIB STOPPER** – Richard Field. Local and coastal. Ph 029 778 8645.

**GIB STOPPER/PAINTER.** Alpha Drywall, Geoff, local 022 027 0290.

**GLASS REPAIR** Call or text Mike Coromandel Glass 027 661 0190.

**HEAT PUMPS.** Sales and installation of Mitsubishi and Fujitsu heat pump/air conditioning. Based in Kuaotunu. Call Bill for a free no obligation quote 027 271 4803. [www.dynamiclectrical-whitianga.co.nz](http://www.dynamiclectrical-whitianga.co.nz). Warm or cool a medium sized bedroom with a Mitsubishi heat pump. Starting at \$2000 installed.

**NEED SUPPORT AT HOME?** My name is Maria and I am an ex registered nurse and I live in Tuatua, Monday-Friday. I'm a kind, helpful and mentally strong person who can do personal care and support work for people in their home. Daytime and/or nighttime. Maria Utting: [mariautting@gmail.com](mailto:mariautting@gmail.com) 021 677 239.

**POOL QUEEN LTD.** Mobile Pool and Spa services Coromandel Peninsula. Call the Pool Queen to have your pool clean. Sharleena Tucker 027 316 3384.

**PROPERTY MAINTENANCE.** Section clearing. We have tractor/frontend loader, tip trailer, slasher, post banger, log splitter, chainsaw, mowing. Anything considered. Te Kouma, Coromandel Town area. Ph Tony 027 494 7692.

**RIDE-ON MOWERS.** Repairs and servicing at Papa Aroha. Pickup and delivery can be arranged. Ph Mike 027 223 7919.

**ROOF KING LTD.** New roofs, re-roofs, leaks, spouting, downpipes, and general maintenance. Ph Eli 021 160 6790.

**SOLAR SYSTEM DESIGN AND INSTALL.** Good Energy your local solar specialists based in Whitianga. Ph Simon 021 242 3394.

**TILE INSTALLATION.** Please phone or email Whitianga Flooring Xtra for your free measure & quote for all your tile supply & installation needs (07)8662836 or [sales.whitianga@flooringxtra.co.nz](mailto:sales.whitianga@flooringxtra.co.nz)

**VINYL LAYING.** Best price 027 350 9242.

**WEBSITEGUY – STEPHEN HUTTON** – for new websites, updates, hosting and domain names. Call: 027 585 3311. Email: [steve@websiteguy.co.nz](mailto:steve@websiteguy.co.nz); Web: [websiteguy.co.nz](http://websiteguy.co.nz)

## FOR RENT

**AIRBNB HOLIDAY ACCOMMODATION AVAILABLE** at Abby's Healing Haven, sleeps five in a separate three-bedroom house, walking distance to Coromandel Town, private, charming cottage with everything provided and a new spa bath on the back deck. Details, photos and AirBnB booking link on [www.abbyshealinghaven.com](http://www.abbyshealinghaven.com)

**BOAT HIRAGE** 5m Ramco Getaway. Suitable 2 persons. Day skippers certificate required. Enquire for further details. Mark 021 295 5532.

## FOR SALE

**COROMANDEL FLOWERS.** For all of your fresh flower needs contact Elisabeth 021 211 9556.

**FIREWOOD DRY!** Delivered Coromandel Town and surrounding areas, good rates, phone/text 022 635 2841.

**FIREWOOD FOR SALE,** stored outside wood is Poplar, \$85 per metre cubed, buyer to collect. Contact Sharon 0278211989.

**HAY FOR SALE** \$13 per bale, buyer to collect. Contact Sharon 0278211989.

**POLARIS SPORTSMAN** 2021 model. Fully serviced by dealer, in near new condition, only 2,949 km. With some extra's. \$9550. Phone 027 636 3253.

## WANTED

**CEROC,** any keen Ceroc dancers in the Coromandel area please txt me on +6421657451

**VEHICLES WANTED DEAD OR ALIVE.** Cars, vans, utes, Trucks. Call 0800 333 398 or text 021 344 449.

## WORK WANTED

**DYNAMIC TREE CARE.** Council approved professional local arborist service for all tree work. Fully qualified, equipped and insured. Health and Safety compliant. Free quotes. Jobs large or small. Stump grinding. Call now (07) 866 8177 or 027 451 2224.

**HOME AND OFFICE CLEANING SERVICES AVAILABLE.** Reasonable rates and a reliable, proven service. Please contact Lynda 027 227 5077.

**TREE SERVICE.** Dismantling or pruning. Free quotes. Call Jeremy Haszard 027 421 0603.

## OTHER

**AGE CONCERN FALLS PREVENTION** Strength and Balance exercise class for seniors. Coromandel Gym, Pottery Lane Tuesday and Thursday, 10am, \$2. Vickie (07) 866 7894.

**PINK DRINKS** two hour bi-monthly lesbian and gay social gatherings. For further information phone Jules 027 392 3221

## SITUATIONS VACANT

**MUSSEL BARGE DECKHANDS WANTED.** Please contact Jake Bartrom, Gulf Mussel Farms for any information or application Ph: 022 127 0883.

**MUSSEL BARGE SKIPPER WANTED.** SRL 24m or equivalent. Please contact Jake Bartrom, Gulf Mussel Farms for any information or application Ph: 022 127 0883.

## VOLUNTEERING

Volunteering ads are free to place in the Chronicle classifieds (subject to space)!



# Coromandel Town weekly and monthly meetings

## Every Monday

Step Aerobics at Coro Gym .....8am  
 Coro Walking Group, meet outside The Bizarre, Ruth 027 338 3545 .....8.30am  
 Coromandel Hikers' Group, Hauraki House, Murray Brown (07) 866 8602.....9am  
 Monday Walkers, Woollams Ave car park north end,  
 Tracy and Peter Kendall 027 333 4722 .....9am  
 Gold Fit at Coro Gym.....9.30am  
 Rummikub at The Club..... 1-4pm  
 Line dancing, Anglican Church Hall, Jeni Mudgway 021 022 75341 ..... 3-4.30pm  
 Coro Superstars, a performing arts group for 6-13-yr-olds, Anglican Hall, contact  
 Claire 021 653 650 ..... 5pm  
 Bridge, St John rooms..... 7pm  
 Taizé 4-part harmony singing, Sally 027 302 4245 ..... 7.30pm

## Every Tuesday

Croquet Club – Association Croquet, Woollams Ave,  
 Lyn 027 466 2661 (winter hours) ..... 9.45-12.15am  
 Age Concern seniors' exercise class, Coromandel Gym. \$3  
 Vickie 027 417 7077 .....10am  
 Yoga for everyone, Colville Hall, Kate 021 125 3152 .....10am  
 Playcentre, Woollams Ave..... 10.30am-1pm  
 Na Ihowa Ahau after-school kids club (term time only), Anglican Hall,  
 Anita 027 259 1085 ..... 3.15-4.45pm  
 Tai Chi, Waikato Events Centre (above the swimming pool),  
 Christina 021 113 4768 ..... 4.30-5.45pm

## Every Wednesday

Step Aerobics at Coro Gym .....8am  
 Pastel Artists Coromandel, Rose's Studio,  
 contact Allan (07) 866 8053 ..... 9am-12pm  
 Gold Fit at Coro Gym.....9.30am  
 Ballet Class For Adults, Coromandel Citizens' Hall, \$15 per class.  
 Marilyn 027 336 5263 ..... 10-11am  
 Coromandel Home-school group, Julene 020 4060 8102 ..... 12.30pm  
 Kung Fu, Coromandel Hospital ..... 5-7pm

## Every Thursday

Coro Art Group, Coro Flying Club, Lindsay (07) 866 7799..... 9am-12pm  
 Age Concern seniors' exercise class, Coromandel Gym. \$3  
 Vickie 027 417 7077 .....10am  
 Free Guided Meditation, Havalona Pyramid ..... 10-11am  
 Movement for Equanimity (MFE), a well-being fascia movement class,  
 contact Judy 021 0200 7550 ..... 3-4pm  
 Line dancing, Anglican Church Hall, Jeni Mudgway 021 022 75341 ..... 3-4.30pm  
 Coromandel Tennis Club "club day" ..... 4.30pm  
 Yin Yoga with Toni, Event Centre, \$10-\$20, Toni 020 4076 1526 ..... 5-6.15pm  
 Coromandel Pickleball, term time, Coromandel Area School gym. .... 6-8pm  
 Coromandel Narcotics Anonymous 12 step addiction recovery meeting, at 100  
 Pound St (orange house). Contact Rosie 027 577 7716 ..... 6.30-7.30pm  
 Free drop-in Dharma talk or video at Mahamudra ..... 7-8.30pm

## Every Friday

Step Aerobics at Coro Gym .....8am  
 Community Gardens volunteer day ..... 9am-12pm  
 Yoga for everyone, Anglican Hall, Kate 021 125 3152 .....9am  
 Croquet Club – Golf Croquet, Woollams Ave, Lyn 027 466 2661  
 (winter hours).....9.45-12.15am  
 Chess Club, Weta Cafe, Mike 027 304 9252 .....9.30am  
 Playcentre, Woollams Ave..... 9.45am-12.15pm  
 Coromandel Bowling Club social evening at the Club ..... 3.30-7pm  
 Coromandel Flying Club social gathering, all welcome ..... 5.30pm

## Every Saturday

Coromandel Homegrown Market, Wharf Rd (summer only)..... 9am-1pm  
 RSA Coromandel, RSA Club Rooms Woollams Ave.  
 President Gary Pettett 021 061 0852 ..... 3.30-7pm

## Every Sunday

Anglican Church Service ..... 10am  
 Coromandel Tennis Club "club day" ..... 2pm

## Monthly

**1st Mon** – Coro Patchwork & Quilters, St John rooms,  
 Michaela Green 021 0287 1879 ..... 9.30am-3.30pm  
**3rd Mon** – Coro Patchwork & Quilters, St John rooms,  
 Michaela Green 021 0287 1879 ..... 9.30am-3.30pm  
**2nd Tues** – Cancer Support Group, St John rooms  
 John Walker 027 482 0435 ..... 10am  
**1st Wed** – Coro Embroiderers' Guild, St John rooms,  
 Helen Pearce (07) 866 8460. .... 10am-3pm

**1st Wed** – Lions dinner meeting (winter time), St John rooms.

Sue Hughes 021 142 1124 ..... 6pm

**2nd Wed** – Garden Circle. Jeni Mudgway 021 0277 5341 ..... 1pm

**2nd Wed** – Car Club meeting at The Club, Bruce 027 249 0878..... 4pm

**3rd Wed** – Lions business meeting (winter time), St John rooms.

Sue Hughes 021 142 1124 ..... 6pm

**Last Wed** – Coromandel-Colville Business Association networking meeting,  
 Combined Clubs, Woollams Avenue, everyone welcome (Feb-Nov)..... 5pm

**Last Thurs** – Green Drinks at Star & Garter ..... 5pm

**3rd Fri** – Dances of Universal Peace, The Pyramid, Sue 022 159 1571..10.30am

**1st & 3rd Sun** – Church Service at St Andrew's Church, Rings Road..... 10am

If your meeting has been omitted, please email Debbie at  
 corochronicle@gmail.com with the subject "meeting" or  
 txt/ph 021 235 6648. Please include contact name and phone number.

## Advertisers' directory

Company	Page
Ann Kerr-Bell – Natural Medical Centre	24
Coro Gym	27
Coromandel Concrete and Landscape Services	8
Coromandel Marine Farmers' Association	15
Coromandel Plumbing (1986) Ltd	27
Coromandel Taxi	11
Creative Coromandel	23
Fairview Thames	19
Fish, Dive, Hunt	13
Four Square Coromandel	10
Frogs Lily Pad Construction	4
GD Haulage	18
Good Energy	14
Harcourts	17
Hauraki Taxation Service Ltd	26
HD Diggers	10
ITM	21
James and Turner	13
James Drainage '97 Ltd	22
Johnston Fencing	18
Llandem Consulting Engineers Ltd	13
Mana	16
Matarangi Plumbing	12
Matt Hobbs Plumbing & Drainlaying Ltd	15
McQuoid Contracting Ltd	7
Michael Wood Builders Ltd	16
Parr Builders	18
Peninsula Electrical Services Ltd	12
Peninsula Pest Services	10
Peter Revell	5
Purnell Lawyers	22
Rainman	3
Revell Architectural Design	6
Richardsons Real Estate	9
Scott Simpson MP	19
Star & Garter	21,32
TCDC	25
Trinity Network	31
Twentymans	6
Waitaia Nursery	8
Whitianga Flooring Xtra	26

# Chronicle

## Calendar of events Coromandel Town August 2025

### Make sure your event gets listed

To get your event listed, email the details to Debbie at [corochronicle@gmail.com](mailto:corochronicle@gmail.com) with the subject "event". Published subject to space availability. with preference to not-for-profit groups. Regular meetings aren't included here - please see weekly and monthly meetings on page 28.

KEY  
● New moon  
○ Full moon

Tide times and heights from Land Information NZ and are for Coromandel Harbour.  
For Thames tides - 15min High and -18min Low.

Rubbish and recycle collection for Coromandel Town (CT), Te Kōhuna (TK), Maniake (MN), Coromandel Rural North (RN), and Thames Coast (TC).

Put red lid rubbish bin and food scrap bin out  
Put recycling bin (plastic, 1, 2 & 5 tins, paper, card), glass recycling bin and food scrap bin out

### COROMANDEL RUBBISH AND RECYCLING TRANSFER STATION

Daily 8.30am-4.30pm  
(winter hours)

FRI

SAT

SUN

1

Mid Winter Relaxation Retreat with Jessica Dziwiska starts at Mana (see ad pg 16)

High tide 12.22pm (2.4m)  
Low tide 6.08am (0.5m), 6.24pm (0.6m)

2

Car Boot Sale, Woollams Ave carpark  
Winter Market at the Anglican Church Hall

High tide 12.39pm (2.5m), 1.10pm (2.3m)  
Low tide 6.52am (0.5m), 7.16pm (0.7m)

3

Meet the Mayoral Candidates in Whitianga (see pg 11)  
Impressions exhibition opens at Hauraki House (see pg 22)  
MEG Winter Lecture (see pg 26)

High tide 1.24am (2.4m), 2.04pm (2.3m)  
Low tide 7.41am (0.6m), 8.12pm (0.8m)

MON

TUE

WED

THU

4

Open Floor Community Dance with Lisa at Mana (see pg 8)  
Qi Gong for Vitality & Wellbeing starts at Mahamudra (see pg 6)

High tide 2.13am (2.3m), 3.03pm (2.3m)  
Low tide 8.35am (0.7m), 9.09pm (0.8m)

5

High tide 3.07am (2.3m), 4.02pm (2.3m)  
Low tide 9.32am (0.7m), 9.04pm (0.8m)

6

High tide 4.03am (2.3m), 4.56pm (2.4m)  
Low tide 10.28am (0.6m), 10.56pm (0.7m)

7

High tide 5am (2.3m), 5.45pm (2.5m)  
Low tide 11.21am (0.5m), 11.45pm (0.6m)

8

Relax and Wellness Weekend starts at Mana (see ad pg 16)

High tide 5.54am (2.4m), 6.30pm (2.6m)  
Low tide 12.08pm (0.4m)

9

Winter Market at the Anglican Church Hall

High tide 6.44am (2.5m), 7.14pm (2.7m)  
Low tide 12.32am (0.5m), 12.53pm (0.5m)

10

High tide 7.31am (2.6m), 7.57pm (2.8m)  
Low tide 1.17am (0.4m), 1.36pm (0.2m)

11

Quiz night at The Club  
Hormonal Harmony Retreat: Understanding, Empowering, and Celebrating Change starts at Mana (see ad pg 16)

High tide 8.16am (2.7m), 8.41pm (2.9m)  
Low tide 2.03am (0.2m), 2.19pm (0.1m)

12

High tide 9.01am (2.8m), 9.26pm (3.0m)  
Low tide 2.48am (0.1m), 3.03pm (0.1m)

13

High tide 9.48am (2.9m), 9.12pm (3.0m)  
Low tide 3.34am (0.1m), 3.48pm (0.1m)

14

High tide 10.33am (2.9m), 11pm (2.9m)  
Low tide 4.28am (0m), 4.35pm (0.1m)

15

Shiatsu Retreat starts at Mana (see ad pg 16)  
Create with Purpose: Sacred Art Workshop starts at Mahamudra (see pg 6)

High tide 11.21am (2.8m), 11.50pm (2.8m)  
Low tide 5.08am (0.1m), 5.27pm (0.2m)

16

Winter Market at the Anglican Church Hall

High tide 12.14pm (2.7m)  
Low tide 5.58am (0.1m), 6.23pm (0.4m)

17

High tide 12.43am (2.7m), 1.12pm (2.6m)  
Low tide 6.52am (0.2m), 7.25pm (0.5m)

18

DEADLINE: Coromandel Town Chronicle August Issue  
Open Floor Community Dance with Pippa at Mana (see pg 8)

High tide 1.40am (2.6m), 2.17pm (2.6m)  
Low tide 7.52am (0.3m), 8.31pm (0.5m)

19

High tide 2.42am (2.5m), 3.24pm (2.6m)  
Low tide 8.56am (0.3m), 9.37pm (0.5m)

20

Grey Power meeting (see pg 13)

High tide 3.47am (2.5m), 4.29pm (2.6m)  
Low tide 10.02am (0.3m), 10.40pm (0.5m)

21

Coromandel Library AGM (see pg 4)  
Release, Replenish, Restore starts at Mana (see ad pg 16)

High tide 4.52am (2.5m), 5.27pm (2.7m)  
Low tide 11.04am (0.3m), 11.38pm (0.4m)

22

Gold Rush Rally (see pg 12)

High tide 5.52am (2.6m), 6.20pm (2.8m)  
Low tide 12pm (0.2m)

23

Winter Market at the Anglican Church Hall  
Gold Rush Rally (see pg 12)

High tide 6.47am (2.7m), 7.09pm (2.8m)  
Low tide 12.31am (0.3m), 12.51pm (0.2m)

24

High tide 7.36am (2.7m), 7.55pm (2.8m)  
Low tide 1.20am (0.3m), 1.36pm (0.1m)

25

Open Floor Community Dance with Lisa at Mana (see pg 8)  
Quiz night at The Club

High tide 8.21am (2.8m), 8.57pm (2.8m)  
Low tide 2.06am (0.2m), 2.19pm (0.1m)

26

High tide 9.03am (2.7m), 9.16pm (2.8m)  
Low tide 2.48am (0.2m), 2.59pm (0.2m)

27

CCBA meeting - discussing Coromandel Ferry (see pg 4)

High tide 9.43am (2.7m), 9.57pm (2.7m)  
Low tide 3.28am (0.2m), 3.38pm (0.3m)

28

High tide 10.21am (2.6m), 10.36pm (2.6m)  
Low tide 4.06am (0.3m), 4.17pm (0.4m)

29

Daffodil Day (see pg 19)  
Alive - Open Floor Dance & Yoga starts at Mana (see ad pg 16)

High tide 11am (2.5m), 11.15pm (2.5m)  
Low tide 4.44am (0.3m), 4.58pm (0.5m)

30

Winter Market at the Anglican Church Hall

High tide 11.40am (2.4m), 11.55pm (2.4m)  
Low tide 5.23am (0.4m), 5.43pm (0.6m)

31

Pottery workshop at Driving Creek starts (see pg 22)

High tide 12.26pm (2.3m)  
Low tide 6.05am (0.5m), 6.32pm (0.7m)





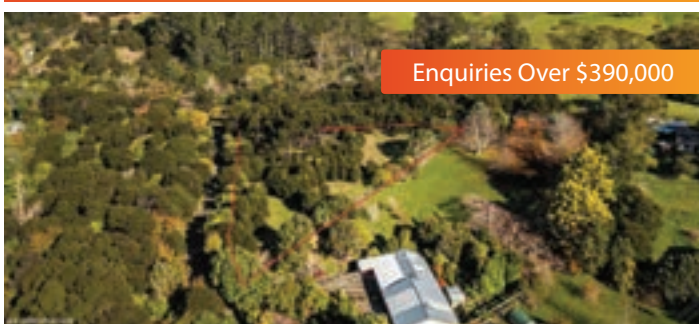
Enquiries Over \$630,000

**Coromandel, 1204A Whangapoua road**  
www.trinityrealestate.co.nz/property/1204a-whangapoua-road-coromandel



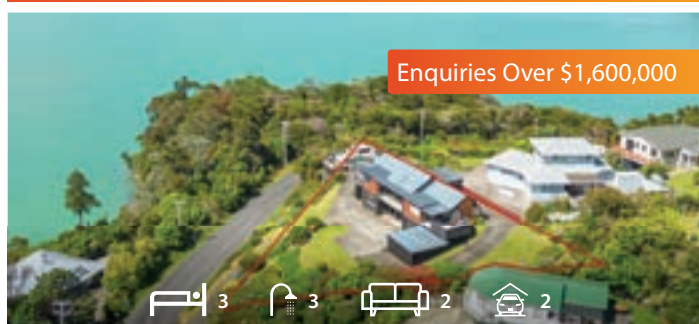
Enquiries Over \$899,000

**Coromandel, 29 Mary-Ellen Place**  
www.trinityrealestate.co.nz/property/29-maryellen-place-coromandel



Enquiries Over \$390,000

**Coromandel, 13 Tramway Road**  
www.trinityrealestate.co.nz/property/13-tramway-road-coromandel



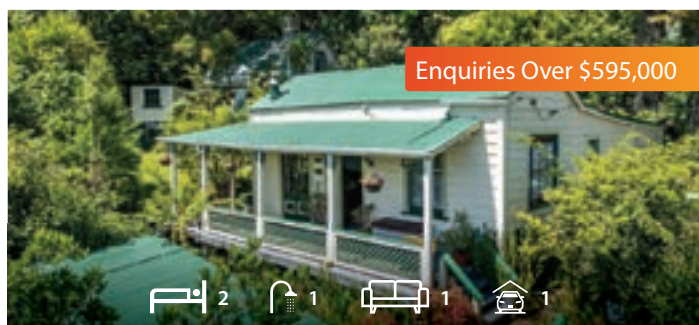
Enquiries Over \$1,600,000

**Coromandel, 290 Wyuna Bay Road**  
www.trinityrealestate.co.nz/property/290-wyuna-bay-road-coromandel



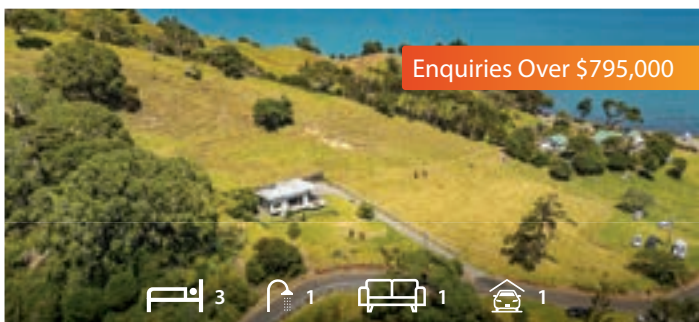
Enquiries Over \$1,200,000

**Coromandel, 1900 Tiki Road**  
www.trinityrealestate.co.nz/property/1900-tiki-road-coromandel



Enquiries Over \$595,000

**Coromandel, 80 Oxford Terrace**  
www.trinityrealestate.co.nz/property/80-oxford-terrace-coromandel



Enquiries Over \$795,000

**Coromandel, 18 Captain Amodeo Road**  
www.trinityrealestate.co.nz/property/18-captain-amodeo-road-coromandel



**SOLD - 19 Puriri Road, Coromandel**

More listings on our website or call into our office at 65 Wharf Road (opposite 4 Square)

Contact us on 07 866 7313

**"WE VALUE PEOPLE, NOT JUST TRANSACTIONS".**

**Rob Keatley**  
REAL ESTATE CONSULTANT  
0275 777 424  
E: rob.keatley@trinitynetwork.co.nz

**Judy Rooney**  
REAL ESTATE CONSULTANT  
021 753 011  
E: judy.rooney@trinitynetwork.co.nz

**Becks Greenhill**  
REAL ESTATE CONSULTANT  
021 069 4428  
E: rebecca.greenhill@trinitynetwork.co.nz

Contact us for a free confidential appraisal and we can discuss our very competitive commission rates.

**We are open 7 days a week, call in anytime.**



# WINTER PIZZA

 **\$15** 

GET YOUR PIZZA LOYALTY CARD  
BUY 10 GET ONE FREE

---

**MONDAY TO FRIDAY  
DINE IN OR TAKEAWAY**

---

CONDITIONS APPLY

**PORK HOCK**  
MASH & CARROTS **\$25**

**OR CRUMBED  
PORK CHOP**  
MASH, APPLE SAUCE, **\$25**  
GRAVY, SAUERKRAUT

---

**DINE IN OR TAKEAWAY - 7 DAYS**

---

CONDITIONS APPLY

**MUSSELS &  
CHIPS \$20**

6 BATTERED MUSSELS,  
TARTARE & LEMON

**BANGERS &  
MASH \$20**

LAMB SAUSAGES,  
ONION, GRAVY

---

**DINE IN OR TAKEAWAY - 7 DAYS**

---

CONDITIONS APPLY

**PASTA**

RIGATONI WITH 6 FRESH  
MUSSELS, CHILLI, GARLIC,  
THYME, TOMATO, PARMESAN  
**\$25**

RIGATONI WITH CHICKEN,  
MUSHROOMS, CREAM AND  
PARMESAN  
**\$25**

---

**DINE IN OR TAKEAWAY - 7 DAYS**

---

CONDITIONS APPLY