

December 2025
Volume 29 Issue 12

Coromandel Town Chronicle

www.coromandeltownchronicle.co.nz

The community magazine for Coromandel Town and surrounds since 1996

FREE
Community Magazine

Rekindling connections

— see page 3



Liz's book signing PG 15



Embroiderers exhibition PG 23



New tractor at Golf Club PG 28



**Haere mai. Welcome to the
Coromandel Town Chronicle**

**View each Chronicle
issue online at
www.coromandeltownchronicle.co.nz**

Cover photo: Murray Peters (Te Patukirikiri) connecting to the visiting artists through whakapapa during the whakatau.
Photo by Jess Milner.

The Coromandel Town Chronicle is published by Jude Publishing Ltd. It is delivered free to the Coromandel Town area.

For advertising please email Debbie on corochronicle@gmail.com or phone 021 235 6648.

If you have any news stories that you'd like included please email corochronicle@gmail.com. If you are not sure how to put an article together for publication then find tips and advice on the website:

www.coromandeltownchronicle.co.nz/html/guidelines.html

The Coromandel Town Chronicle is open for everyone to contribute, however the editor reserves the right to select the articles and letters that are published and edit them for clarity and space.

The Coromandel Town Chronicle is printed with vegetable oil based inks by Print House Ltd, Hamilton. An accredited FSC and PEFC printer.

**Deadline for the next issue is
4pm Tuesday 16 December.**

**Send your letters, articles and advertising to
corochronicle@gmail.com**

Letters 350 words max. and articles 600 words max.

**Live out of town and would like to
receive a printed copy?**

Annual subscription costs \$57 (incl. GST) NZ postage only.

See contact details above.

Or download a PDF copy from
www.coromandeltownchronicle.co.nz

Disclaimer: The publisher and its editors of the Coromandel Town Chronicle shall not be responsible in any way for opinions expressed in letters and articles contained in the Coromandel Town Chronicle or for loss or damage suffered by anyone in reliance upon the information contained therein. Further, no endorsement of any product or service featured or advertised in the Coromandel Town Chronicle should be implied or assumed.

ISSN: 1178-721X (Print), 1179-4895 (Online)

Emergency

Call 111. AED's in Coromandel Town: Fire Station, Ambulance Station, Four Square, Coro Family Health, Bowling Club/RSA, Te Korowai and Phoenix House. Although AED's are important, St John say performing continuous chest compressions/calling 111 takes priority.

..... Editor's comment

Wow, suddenly Christmas is fast approaching, and 2025 is coming to an end. I am bracing myself for the seasonal busyness on the roads, beach and town. As I write this there are only a few weeks left of the school term, and my son is just finishing his last few exams.

Two locals that I know of have written books that have just been published: Liz Cameron got her "Liz's Kitchen" recipe book out in time for Christmas presents (see the library article on page 15), a project that she has been thinking about for many years. She has already sold out of her initial print run, but may print some more if there is the demand; and Andy Reid has published a book on Adventure Racing Coromandel called "Are you trying to kill us?" (see article on page 22).

Thank you to all of the community for the support I have received for the Chronicle in 2025. I've had a few large Chronicle issues with the election and start of the summer season, and received a lot of compliments about the Chronicle. So I am happy to keep working on it and bringing it to you every month. Thanks.

The January issue will be printed prior to the printer's closing for Christmas. So send your New Year adverts and articles by **Thursday 16 December**. The January issue comes out between Christmas and New Year.

Have a good Christmas, Meri Kirihimete,

Debbie

..... Letters

Name confusion

Reading Debbie's editorial in the November Chronicle made me think about this confusion.

In the past (when I was at school!) there was no confusion as the Coromandel Peninsula was always to be referred to as just that. Coromandel was always the town. However, with the recent proliferation of abbreviation in every area of life, the word Peninsula has been dropped and "The Coromandel" used.

There is a simple solution: With many towns in Aotearoa New Zealand combining their original Māori name and their European name, why not refer to our town as Kapanga/Coromandel? The name Kapanga is at the entrance to the town so it would not be unusual to visitors. For myself, when asked where I come from, I always say Kapanga/Coromandel. When I put my address on anything I do the same. It would not take long for people to recognise the connection and separate the town from the whole Peninsula.

Regards

Win McMinn

Email letters and opinion pieces to the *Coromandel Town Chronicle* corochronicle@gmail.com. Contributions should be kept short, and should not exceed 350 words. The editor reserves the right to reject letters or edit them for clarity and space.



GaiaDecorators
PAINTING HOMES
ACROSS THE COROMANDEL LIMITED

Mark Gaia 021 295 5532 | 07 866 8157
COROMANDEL | gaiadecorators@gmail.com
www.gaiadecorators.co.nz



COROGYM@GMAIL.COM

Ahi Kaa: rekindling connections as Māori clay artists return to Driving Creek

In early November, Driving Creek welcomed Ngā Kaihanga Uku (The Māori Clay Artists Collective) a friends back to Kapanga for their first visit in almost ten years. Formed in the 1980s, the collective brings together Māori artists working in clay, united by a shared commitment to working from a Māori perspective, sharing resources and knowledge and connecting with indigenous clay artists around the world.

The week began with a whakatau at Hoki Mai station. The railway station is home to sculptures by NKU members Baye Riddell, Carla Ruka and friend Mike O'Donnell, which watch over the entrance to Barry Brickell's burial site, a testament to the long relationship between NKU and Barry. For many senior NKU members, this was their first return since the 2016 wānanga held shortly after Barry died. The theme of the visit, Ahi Kaa, centred on rekindling relationships between NKU, DCR and the wider community, and on keeping these fires burning into the future.

Most of the week was spent in wānanga in Barry's old studio. Each day, different artists also led workshops and shared techniques with the community. Groups from the local kura kaupapa and area schools joined sessions run by Carla Ruka, where students learned to make pūtangitangi flutes from clay.

In the evenings, the Citizens' Hall hosted four nights of artist talks. The kōrero



NKU artists and friends in the exhibition space after the opening of Ahi Kaa

ranged from Pacific pottery traditions, the reclamation of a Māori voice in clay, kūmara research, crystalline glazes and relationships with indigenous clay communities around the world. There were also discussions on whakapapa, honouring those who have gone before us and the revival of burial practices disrupted by colonisation. Each night the hall came alive with waiata, laughter and the spirit of sharing.

The week culminated in the opening of the Ahi Kaa exhibition in the Driving Creek Gallery. In the words of curator Chantel Matthews "The exhibition celebrates this legacy of sharing knowledge, resources, and artistic vision. Taking inspiration from the ethos of Barry Brickell, Ahi Kaa is a testament to the enduring bonds within the clay community. The works on display reflect a deep respect for whenua, whakapapa, and the traditions that have been kept alive and reimagined by each generation."

For anyone who missed the chance to connect with NKU during their visit, the exhibition remains open 11am to 3pm, Tuesday to Sunday, until **28 February**, with free entry.

NKU artist and facilitator Carla Ruka says of the week "I am confident that the Ahi Kaa exhibition and wānanga, have successfully revitalised the cultural relationship between Ngā Kaihanga Uku, Driving Creek Railway and Tāngata Whenua. Engaging the community



Murray Peters (Te Patukirikiri) connecting to the visiting artists through whakapapa during the whakatau

through enriching culturally weaved programs, fostering connections for future collaborative opportunities and honouring the legacy of Barry Brickell and Baye Riddell. It was a pleasure to work alongside the Driving Creek team and I look forward to our future endeavours."

Throughout the week, it was clear how deeply NKU artists live their kaupapa, from elders passing on skills to emerging makers to the care they show one another. Driving Creek extends a heartfelt mihi to all the visiting artists, as well as staff, friends and community members who helped bring the gathering to life. Thanks also to our supporters Creative Coromandel, Coromind, Te Tuhi Art Gallery and Te Patukirikiri and Murray Peters for their guidance.



Artists Mike O'Donnell and Wi Taepa

Coromandel Town Community Christmas Lunch

By Chris (Four Square owner), Rita and Lyn

You are invited to attend and partake in our annual Coromandel Town Community Christmas Lunch on **Thursday 25 December**. The lunch is open to all.

We are reaching out to our community asking for monetary donations which will enable us to host the lunch. Do you have a spare dollar or more? Anything from a single dollar upwards would be most appreciated, particularly in these trying times.

Monetary donations, can be left at the Four Square (address: For Coromandel Community Lunch). If you are keen to help with preparing/cooking or donating food, or just help on the day, we look forward to hearing from you.

Contact us or book

Email Lyn: coromandelchristmaslunch@gmail.com, or phone Rita 027 210 3734. We look forward to hearing from you.

Those attending are welcome to make a donation if they like to do so.

Please book early, the venue has limited seating, we would not want you to miss out.

The lunch is at the Citizens' Hall on Kapanga Road. Doors open at 12.30pm, lunch will be served at 1pm. We look forward to sharing a delicious lunch with you.



FROGS LILY PAD

021 051 2649

FROGGY

027 815 2528

FABIEN

ALL BUILDING PROJECTS

LARGE OR SMALL

frogslyypad@xtra.co.nz

CONSTRUCTION

Licensed Building Practitioners
EST. 2004

EARTHWORKS

We have a wide range of earthmoving equipment, call us before you build for foundation works, driveways, landscaping and more

Coromandel Bowling Club

By Judy Campbell

Twilight Bowls that was due to start on 28 October was postponed due to the weather but thankfully, the following Tuesday (3 November) saw the start of the five week competition for all 32 teams.

On 6 November, we held our Open Alternate 4's Tournament sponsored very kindly by Mussel Barge Snapper Safaris. The winners overall were a Mercury Bay team comprising Graeme Goss, Irene Goss, Russell Farrant and Dennis Barnes.

Our Men's and Women's Club Champ Triples were held over the 8/9 November with Colin Gawith, Jason Dickson and Ernie Groucott winning the Men's section (see photo) and Lindsay Nicholls, Pam Harris and Judy Campbell winning the Women's section (see photo). Play over the two days saw some great games of bowls being played and even the periods of rain didn't stop the play.

Both teams will now go on to compete for the Thames Valley title in December, as will the winners of our Men's and Women's Club Champ Pairs that was played over the last weekend in November.

December kicks off with another Open Optional Triples Tournament on **Wednesday 3 December**, and on **Friday 5 December** we have our Bowling Club Christmas Party, starting at 5.30pm. The rest of December sees Club Days filling up our diary.

If you are lucky enough to be holidaying in our beautiful Coromandel Town, you are welcome to come down to the club to join us in a roll up on Thursdays (names in by 8.30am) or Sundays (names in by 10.30am).

We have bowls you can use and our bar is open for a social catch-up and drink as well on Friday afternoons from 3pm. Visitors are welcome.

Quiz night

The December Quiz Night date has changed to **Friday 19 December**, instead of the usual last Friday of the month.



Club Champ Triples Men's winners



Club Champ Triples Women's winners

RSA Coromandel

By Annette James

Armistice Day (Remembrance Day)

On 11 November at 11am, we traditionally commemorate Armistice Day with a two minute silence. Armistice Day celebrates the agreement to end the four years of fighting as a prelude to peace negotiations between Germany and the Allies in 1918. The arrival of the Americans tipped the scales for the allies, allowing negotiations and the agreement was signed at Compiegne, France at 5.45am, with a plan to cease hostilities at the 11th hour of the 11th day of the 11th month.

In New Zealand, it also commemorates those who died serving our country in the 1st World War and all other hostilities through our history.

The signing of the armistice was celebrated in many cities and towns around this country with thousands taking part or watching the parades on 12 November after the official announcement that morning. This was in spite of the fact that we were going through an influenza pandemic at the time.

Numerous countries observe Armistice Day in different or similar ways, including: Australia, Belgium, Canada, France, Romania, Serbia, the UK and many more.

COROMANDEL PLUMBING

(1986) LTD

1490 Tiki Road, Coromandel

CRAIG DUDSON

Phone/Fax 866 8814
027 482 1291

Plumbing, Drainlaying and Gasfitting

RAD

REVELL
ARCHITECTURAL
DESIGN

- New home design and draughting
- Alterations and additions
- Resource and Building Consent applications
- 3D rendering
- Landscape design

Scott Revell

NZDipArchTech

027 861 6592

scott@revelldesign.nz

www.revelldesign.nz



DYNAMIC
TREE CARE

Dan Redfern / Arborist

027 451 2224

07 866 8177

dynamictreecare@gmail.com
www.dynamictreecare.co.nz

Thames Animal Rescue

By Alice and John Parris

Firstly thank you to everyone who has donated food for the rescue cats and to an awesome local family whose beloved cat had passed away and they donated food and treasures to us, the flea treatments were a huge blessing, thank you so much.

We wish everyone a very Merry Christmas, may it be full of love, joy and fun. If on the roads, stay safe. Thank you to everyone who has supported us with food and financial blessings which has helped keep the rescue unit running and the cats fed and happy.

We have lost an older feline, Tutu, she was 12 years old, small, frail and left home three weeks ago. On reflection we saw odd behaviour going between husband and myself one night and two days later a loud "meow" and she has not been seen since. Us and the other kitties have been calling for her.

Financially we are almost out of funds and if anyone wishes to help us help the rescue unit with donations, any financial blessings should go to Thames Animal Rescue Team 06 0457 0095150 01 with reference of where you would like us to spend the blessing.

Wanted: cat food – tinned, salmon, sachets, sardines, pet milk, kitten biscuits; cat toys.

Meow furr now.

Any enquiries to Thames Animal Rescue 07 868 2907 afternoons best



PHOTO COURTESY OF NIKKI STEPHENSON

Santa Parade

Santa Parade 2024

Santa Parade in Coromandel Town will be on **Sunday 14 December** at 11.30am

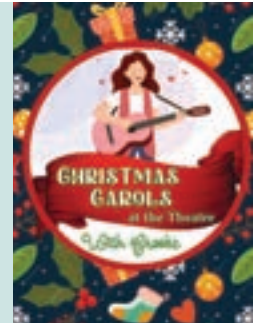
Parade starts at Te Tiki Street (Top Pub) through the main street and finishes in Coromandel Area School bottom field. Prizegiving, Santa's Grotto, market and entertainment to follow. Parade and stall registration forms and kids colouring competitions can be collected from James & Turner and Coromandel Town Information Centre.

Christmas Carols at the theatre

With Brooke Dennehy Lakin

Come and celebrate Christmas with song, **Sunday 21 December** 5pm at Hauraki House Theatre (behind the playground).

This will be a casual, feel-good community event run by local musician and children's entertainer/educator Brooke Dennehy Lakin where we will sing well-known Christmas Carols together. Songbooks with lyrics will be provided. Dressing up is encouraged. Koha entry at the door.



Coro Cowboy Fishing Charters

Phone: 027 344 7833

Email: corocowboy ltd@gmail.com

Facebook: Coro Cowboy Fishing Charters

Coro Cowboy Fishing Charters are excited to welcome both locals and visitors aboard this Summer!

A whānau owned and operated, Coro Cowboy Fishing Charters offers half-day, full-day, and custom trips tailored to all experience levels – from seasoned anglers to first-timers just looking to enjoy a day on the sea. Guests can expect expert local guidance and advice, top-quality gear and dedicated customer service.

Voted Tripadvisor's **Travellers' Choice 2025** and ranked #1 for Boat Tours & Water Sports in the Coromandel.

With summer bookings already filling fast, now's the perfect time to book!

Thank you for your support, Zander, Roger & Alysha

The Colville Project

Your story matters: help strengthen Northern Coromandel's future

The Colville Project (TCP) recently attended Community Waikato's "Navigating the Tough Times" conference.

This stressed growing challenges for not-for-profits across Aotearoa/NZ where funding is harder to secure (only 40% of applications being successful nationally), calling communities to unite to secure their future.

The Northern Coromandel's a place where neighbours look out for one another, and community organisations like TCP, Colville Junction (CJ), The Colville Cooperative Society and Colville PDC make real differences every day.

Despite clear evidence that better community spaces lead to better health, learning, and wellbeing outcomes for everyone, it's clear that our region often goes without the facilities and services that are taken for granted elsewhere.

TCP, working toward resource consent for the Wellbeing and Education Centre, is in a critical phase. Collaboration has always been at our core - from the coming-together of CJ and Colville Community Health Trust (CCHT), to generous community support and feedback. TCP's heartbeat is



our community. Showcasing the challenges us "ordinary" people face because of where we live and/or the extraordinary things achieved despite this, contributes powerfully to building our community's story. We all have something valuable to share.

Your voice matters

- If you've seen positive change because of our community organisations, please share your story.
- If you (or your whānau) have encountered challenges because of where you live or because local facilities weren't adequate, didn't support services you needed, or don't exist, tell us.

Every story, big or small, helps us present TCP's case to funders/planners.

Share your story for change

Please share your story with TCP (contact Amajjika at amajjika@thecolvilleproject.nz or 027 455 8707). Your voice can shape our region's future – together we can build a community where wellbeing through access to baseline services is everyone's right.

Gratitude

Thanks to Community Waikato and Trust Waikato for sponsoring our attendance.



Community Waikato and conference hosts



Guest speakers: Sir Ashley Bloomfield, Dave Letele, Cam Calkoen

Hot Spot – News from Coromandel Volunteer Fire Brigade

By Rob Chappell

Recent callouts: Coro Medical Centre, motor vehicle crash car vs campervan, alarm activation, ambulance assist, roadside fire, car fire, motor vehicle crash car vs pedestrian, tree across road, cardiac arrest, school fire alarm, power plinth on fire, helicopter assist.

The weekend of 7-8 November we held our annual National Fire Fighters Fishing Tournament. National means some 172 fire fighter's past and present from across the nation converge on Coromandel Town to compete but also to enjoy our hospitality, and our beautiful location. Once again, a huge thank you to you our sponsors. As always you have got behind this project. We are humbled by your generosity even though many are still struggling from the recent lockdowns, your community spirit prevails.

Sponsors of the 2025 Fishing Competition

Anchor Lodge Motel, Long Bay Motor Camp, Bernie Bull, Matt Attwood, BP Coromandel, Michael Turner, Carters Building Supplies Kopu, Mick & Kay Walker, Coromandel 4 Square, Oamaru Bay Tourist Park, Coromandel Chopping Block, Ohana Farms, Coromandel Cowboy, Paddy Bull Ltd, Coromandel Electrical, Pepper Tree Restaurant, Coromandel Fishermans Hubb, Perfect Air, Coromandel Fishing Club, Pipeline Hose Shop Coromandel, Coromandel Garage GAS (gasoline alley), PosPro Hamilton EFTPOS, Coromandel ITM, Richardsons, Coromandel Oyster Co., Salty Towers, Coromandel Town Supply Brewery, Simon Debenham, Coromandel Zipline Tours, Star & Garter, Driving Creek Railway, Super Liquor, FENZ Sports Council, Tasman Holiday Park, Gib Bull, Tidewater Motel & Tourist Park, Harbour View Motel, Top 10 Shelly Beach, Hunting & Fishing, Top Pub, James and Turner, Top Town Takeaways, James Drainage Ltd, Weta Cafe, John Kararia, Xander Ward, Kim & Kevin Brett.

As I begin to write this, the summer has finally decided to appear, and with that temperatures have made a significant jump. Looking at the number of fires already in other locations around Aotearoa, we are now starting to dry out significantly so please be warned. Recently in the Whangarei Hospital car park a grass fire was started just by a ute exhaust on rank grass. Several parked vehicles nearby were destroyed.

Before you light go to checkitsalright.nz or call 0800 658 628 and also check the current conditions to ensure you can proceed.

As always please check the vegetation on your access, can our big Red Truck get access?

Merry Xmas to one and all. Have a wonderful and safe summer.



Coromandel Town Information Centre

By Sue Ngamane

There appears to be a pregnant pause about the town at the moment, waiting for the season to begin.

Businesses are looking for extra staff over the holiday season. Coupled with that, accommodation to house the extra helpers is always at a premium at this time of year so if you have suitable accommodation and wish to earn extra over this time, please contact those who you see are advertising for workers – I'm sure they will appreciate you reaching out.

There has been an increase in visitors to the Information Centre, especially international travellers, over the past couple of weeks, another indication this season will carry on the trend of the post-Covid (and weather events) seasons which has just been growth on growth.

While we at the Information Centre are maybe the "shop face" of the town and region, all of us, irrespective of our occupation, hobbies or daily routine can help boost the foot traffic to the many attractions that are on offer in our region. Talk to visitors about your experience on your walk this morning, or the last time you had visitors and their impression of visiting Driving Creek Railway & Pottery, the Gold



Stamper Battery, Over the Fence and The Waterworks, while also regaling them about the artists, crafts people and galleries that are dotted around the region, the options available to purchase that

perfect holiday memento from our unique shops and businesses. Encourage them to immerse themselves in the hospitality offered by the restaurants and pubs – rub shoulders with the locals and fisher people of the town, they may pick up some handy tips over that relaxing beer after a hard day on the water. Remind them of the homegrown brew offered from the Coromandel Town Supply brewing. Include suggestions of trying the new cafes in town – Kai Manahua, Café 36 and the Taj Indian. Relate to them your experience and enjoyment of the many eating establishments we have in town. While it may take a village to raise a child, it takes a community to ensure the town prospers.

And don't forget to suggest they gird their loins for the Keltic Fair – our busiest day of the year – encouraging them to enjoy all the fun of the fair.

Remembering the Coromandel Taxi service offered by Sharon and her crew, which now includes options of rides to the attractions we have, on top of the shuttle to and from Thames, there are now three options for car hire – GAS in Coromandel Town, City Hop operating out of Shelley Beach Top Ten and Peninsula Rent a Car all

offering different services to cater for just about every need.

Let us all ensure that the offspring from the pregnant pause is all we would wish for, ensuring the town continues to grow from strength to strength.

On a local note, those who follow the What's Happening Facebook page will have seen that the town cat – Helen Clark – has entered into the autumn phase of his life and while I do not believe it is the last we will see of him wandering the streets, as he is wont to do, it may not be as often. Kia kaha Helen!

Merry Christmas to all, wishing you all a relaxing and pleasant holiday season and a prosperous and happy New Year.

The Information Centre will be open for longer over the season – Monday 9.30am-3pm; Tuesday to Sunday 9.30am-4pm commencing 1 December

Magical lights

Magical lights sparkling bright,
like fairies in the darkness of the night.

Fairies, little people.
pixie dust, fallen stars.
Christmas lights!

*This poet was too
shy to put his name
to his poem.*

POETRY
SPOT

WHITIANGA FLOORING XTRA

Style your space,
your way.

tile warehouse

VEN LU REE

ENJOY DISCOUNTS ON TILES, CURTAINS AND
BLINDS WITH YOUR FLOORING PURCHASE.

Spend \$3000 get 15% off

Spend \$5000 get 20% off

Spend \$8000+ get 25% off

Whitianga Flooring Xtra
68 Albert Street, Whitianga

E: whitianga@flooringxtra.co.nz
P: (07) 866 2836

Matt Hobbs
Plumbing & Drainlaying Ltd
www.matthobbsplumbing.co.nz

Matt Jo & Bruce would like to thank our
valued customers for their support
during 2025 and wish them a merry
Christmas and happy New Year!

021 0263 4206
336 Wharf Road, Coromandel

Open Floor Dance with Lisa in Coromandel Town

By Lisa Corston-Blanche

A totally random side note about feet before I mention upcoming classes. Some people feel they have “two left feet” when it comes to dancing, feeling shy, awkward, or un-coordinated, as if somehow they lack the ability to dance ‘the right way!’ On the Open Floor we welcome all types of feet, all sizes, shapes, genders, ages. Shy feet, timid feet, extroverted, sassy, courageous, quirky, playful, curious, quiet feet, fast, slow, reclusive, light-footed, sure-footed. All feet are welcome to come groove, slide, shimmy, stomp, ground down to the earth or feel light as if filled with helium. There may be moments when feet move slowly, fully present to myriad of subtle movements 26 little bones can offer. And sometimes feet are tired and sore – so sitting in a chair or coming down to the floor to explore dance at ground level can offer respite, ease, and new doorways into the dance. All feet are welcome, all bodies are welcome, all dances are welcome, know that you are welcome.



And now onto class offerings ... we have one more Sunday Morning “Just Dance” to begin the winding up this passing year. Bring your 2025 vibes with you. Sunday will be a chance to honour however this year has unfolded for you, your joys, your struggles, new life coming into being, perhaps the passing of someone close, dreams or goals that were realised or passed by the way, the curveballs, the marked moments big or small, the celebrations, or whatever the vibe is that holds the essence of your experience of this past year. Your dance may coast the surface of your 2025 memories or perhaps this dance could hold some deeper honouring, only you will know what it is that you need .. or .. flag all that and just come dance!



And then my final offering for this year will be a New Years Eve Dance up at Mana Retreat on **Wednesday 31 December**. You are invited to come be in community and celebrate the completion of one year and the opening of the next. Lets dance, pause, reflect, move, imagine, dream, and then dance some more, in good company together. Love to see you there.

Check out my website at the end of this article if you would like to know more info.

Quote of the moment: “We are encouraged to dream the dreams that will shape the landscape of our reality in the year to come” – Lottie Moore

New Years Eve Dance – **Wednesday 31 December** 10am-12noon, Mana Retreat Centre, \$35/\$30 or contribute as you are able, bookings preferred to secure your space.

December Monthly Sunday morning “Just Dance” with Lisa – **14 December** at Coromandel Citizens’ Hall, 10:45am-12:15pm, minimal instruction.

December Tuesday classes – no classes with Lisa this month. Pippa has her final class on **9 December** at Mana Retreat Centre, 10-11.45am, \$25/ \$20, or pay as you are able.

Do remember your first ever “Dancing w/Lisa” class is free (not including the New Years Dance) whether it be a Tuesday or Sunday, simply come up and say hi at the beginning of class.

Please note no alcohol/drugs. Dance with you soon, Lisa

If you would like to be on my email or txt reminder lists then flick me a message. My contacts: wildbonesopenfloor@gmail.com, Facebook/ Instagram: wildbonesopenfloor, txt 0211754741. Otherwise see wildbonesopenfloor.co.nz for all other info

Purnell

LAWYERS

BRENDA FLAY, SOLICITOR:

Travels to Coromandel on Tuesdays.

Please phone the Thames Office (868 8680) for appointments.

PARTNERS: Hayley Green and Brenda Flay

THAMES OFFICE: 611 Mackay Street, P.O. Box 31, Thames

PHONE: 868 8680 **EMAIL:** info@purnell.nz

COROMANDEL OFFICE: 150 Pound Street

OUR SERVICES

ESTATE PLANNING / PROPERTY / COMMERCIAL

www.purnell.nz

THAMES

WHITIANGA

COROMANDEL



- Concrete Floors
- Driveways
- Pathways
- Concrete Cutting
- Landscape
- New Developments
- Grounds Maintenance

Aaron 0274584044



Is your water tank CLEAN?

SYSTEM CHECK:

No obligation, FREE community service!

\$FREE

TANK CLEAN:

Vacuum sludge - without draining your tank!

~~\$349~~ only **\$299**

UV & FILTERS:

Annual service to ensure SAFE drinking water!

from **\$100**



0800-RAIN-22
www.rainman.co.nz

SCAN ME
TO BOOK
ONLINE >>>



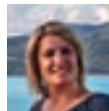
✔ Friendly advice ✔ Reliable service ✔ Fixed price ✔ Includes installation ✔ GST included ✔ No surprises

/Richardsons

Real Estate Ltd MREINZ / Coromandel
Licensed REAA2008



Kim
021 533 174
Licensed Branch
Manager



Melissa
027 249 8287
Licensed
Salesperson



Laurie-Ann
027 927 6368
Licensed Property
Manager



Lynne
Office
Administrator

151 Kapanga Road, Coromandel

Phone: 07 866 8900 ☺

www.richardsons.co.nz

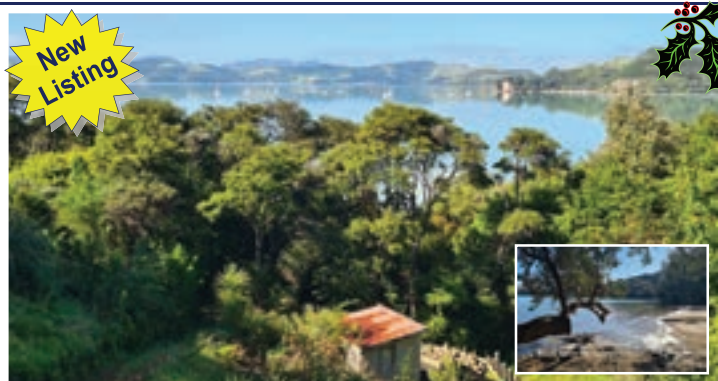
coromandel@richardsons.co.nz



A hidden garden. Fabulous vege gardens and a wonderful variety of fruit/citrus trees on 1,349m2 section. 3brm home, 2 decks, double garage and small cabin ideal for art studio. Easy walk/cycle ride into town. **\$730,000**



Set at the end of Wyuna Bay Road, this property commands panoramic northerly views of the beach & harbour. 3brms, open-plan living, large conservatory, office, double garage, carport. Just bring the boat!!! **\$PBN**



Waterfront on sought-after Wyuna Bay Road. Sloping 878m2 section offering expansive south/west harbour views. Walk down to the beach below, under Pohutukawa. Boat ramps & hiking trails nearby. **\$450,000**

We would like to take this opportunity to thank all our loyal Clients, Customers, Landlords, Tenants and valued friends for the fantastic support you have shown to us throughout the year.

We wish everyone a very



Happy New Year

~ Kim, Melissa, Laurie-Ann & Lynne ~

Richardsons Real Estate



Go BIG! Over 2 acres of grazing, lawns, gardens. 3brm+ home, garage/imp shed. WOW! **\$1.595M**



Cattle/horses to graze? 7.41Ha, huge 3bay barn, small cottage, sea views, LIFESTYLE!!! **\$1.25M**



Driving Creek... STUNNING gardens of 4,378m2, stream boundary, large 4brm home. **\$1.1M**



The 'FISHERMANS' base. 2brm home, decking, large double garage. Lock-up & leave! **\$675,000**



Perfect in 'Elizabeth Park'. Immac presentation, 2brms, decking, garage & landscaped. **\$495,000**



2,897m2 section with 'Podlife' cabin for perfect weekend retreats. Build larger later! **\$495,000**



Ready for new owners. Renovated/redecorated 3brm home, decking, garage, lawns. **\$735,000**



Great first home, retirement or rental. Garage, 2brms, decking on cross-lease section. **\$560,000**



4.58Ha set on the outskirts of Colville. Primarily in bush, 2 x small cabins, deck, off grid. **\$445,000**

Mahamudra Centre

A season of reflection, renewal, and giving

As the year draws to a close, Mahamudra Centre in Colville is filled with gratitude for another year of connection, learning, and community. From inspiring retreats to online study and quiet moments in the temple gardens, 2025 has been a year of growth and renewal. As we head into summer, there's a wonderful sense of momentum and possibility for the months ahead.

Our Discovering Buddhism online program with Venerable Thubten Khadro continues to be a source of insight and inspiration for students around Aotearoa and beyond. Module Three: "Presenting the Path" is currently running and will conclude on **10 December**. This module provides a clear overview of the entire Buddhist path to enlightenment – from developing compassion and renunciation to understanding the wisdom that frees the mind.

The program will then take a summer break, returning in February 2026 with Module Four: "The Spiritual Teacher". This next module will explore the essential role of the teacher in Buddhist practice – why guidance is so important, what qualities to look for in both teacher and student, and how to build a respectful and transformative relationship.



We're also delighted to share the details of our upcoming summer retreats with Venerable Tony Beaumont, who will be leading a series of programs under the theme Awakening Wisdom and

Compassion in Everyday Life. Ven. Tony's clear, kind, and practical approach makes his teachings deeply accessible for both new and experienced practitioners.

Lamrim Retreat: Exploring the Path to Wisdom & Compassion

20-26 January 2026 – A step-by-step journey through the essential teachings of the Buddhist path, helping participants apply ancient wisdom to modern life with clarity and calm.

Tara Retreat: Cultivating Courage, Wisdom & Compassion

5-8 February 2026 (Waitangi Weekend) – This retreat focuses on the practices of Tara – the embodiment of enlightened activity – guiding participants to awaken courage and inner strength through meditation and mantra.

White Tara Retreat: Healing, Longevity & Inner Renewal

13-15 March 2026 – A gentle, heart-opening retreat centred on White Tara, known for her blessings of vitality and compassion.

Chenrezig Retreat: Transforming the Mind with the Eight Verses

2-6 April 2026
(Easter Weekend) –

A profound exploration of compassion and the lojong (mind training) teachings, offering practical tools for transforming everyday challenges into opportunities for growth.

In the spirit of generosity, we're also excited to announce the launch of our new Mahamudra Gift Card, available exclusively online. The card can be used toward retreats, accommodation, or teachings – a thoughtful way to share peace, reflection, and renewal with friends and family this festive season.

Behind the scenes, our team continues to refresh and improve the Centre, from maintaining the Centre and gardens to expanding our online offerings. We invite everyone to explore www.mahamudra.org.nz for details on upcoming retreats, courses, and resources.

As always, all are warmly welcome to visit, join a meditation, or simply enjoy a peaceful moment around the stupa or the gardens. Thank you to everyone who has supported, volunteered, and shared this journey throughout the year. May your summer be filled with calm, kindness, and inspiration.

For event details, retreat bookings, and gift cards, visit www.mahamudra.org.nz



Coro Chess Club

By Mike M

Great to see family of members joining in.

A brain stretch each week with humor.

If anyone interested from Matarangi transport can be arranged for the 9.30am Friday morning start at Weta cafe. Great food and coffee.

All abilities welcome.

JOHNSTON FENCING

PHONE ROSS
021 395 900

GIVE A LITTLE SUNDAYS

\$12 PIZZA SUNDAYS

\$1 from every pizza is donated to a local community service.

This month:

**Coromandel Town
Community Christmas Lunch**

**ALL DAY EVERY SUNDAY
DINE IN ONLY**

**STAR & GARTER
HOTEL**
Coromandel Town

CONDITIONS APPLY



At the opening of the Fuel Stop in April



COROMANDEL CAR CLUB

Car Club

By Bruce Finan

Car Club is 1st and 3rd Wednesdays at the "Club" from 4pm.

We had a very busy night our first Happy Hour for November and the run to Hautapu to visit the Ross Bros Car display. For those who haven't been for a while it has grown even bigger with Scott Dickson's 2005 Indianapolis race car on display and a cool western cowboy Saloon and a Smith & Weston Bar, Colt 45 toilets, thanks to Wayne Duffy for organising that.

Next Sunday run will be **Sunday 7 December**. Christmas Parade is **Sunday 14 December**.

Merry Christmas and a Happy New Year.

The Waterworks – new management

Hello Coromandel community. We are Ed and Karen, the new management team at The Waterworks, and we are thrilled to introduce ourselves to the people who have made this iconic place such a treasured part of the Peninsula. As many of you know, The Waterworks has long been recognised as a quirky, imaginative, eco-powered playground built with creativity, Kiwi ingenuity, repurposed materials, and a huge heart. Our mission now is to honour that legacy while breathing new life into its future.

We arrived with a deep appreciation for hands-on learning, environmental education, community engagement, and playful exploration. We believe that places like The Waterworks offer something rare and important: an experience where fun, imagination, sustainability, local identity, and outdoor discovery all come together. Our vision is to revitalise attractions, improve facilities, strengthen safety and hospitality, enhance café offerings, and expand learning-focused interactive installations, always keeping our uniquely Coromandel personality intact.

We also aim to make The Waterworks a true community-connected space – where local families feel at home, schools find value, and visitors leave with both laughter and curiosity. Over the coming months, we will be refreshing current exhibits, designing new water-powered inventions, improving signage and storytelling, and developing seasonal events and collaborations with local talent, makers, schools, and businesses.

Most importantly, we want to say thank you – to those who have supported The Waterworks for years, to the people who built it, and to all who have shared warm memories with us since stepping in. We are excited, humbled, and committed to the work ahead.

We look forward to welcoming you again – come say hello, bring ideas, share stories, and be part of the next chapter.



You're invited to our:
Annual Summer Kick-Off!

**Sunday
7th
December**

\$10
entry
10am-6pm

Follow us:

thewaterworks_coromandel

022 369 307

www.thewaterworks.co.nz

info@thewaterworks.co.nz



Linley Rose's garden

Coromandel Garden Circle

By Sheana Goudie

This month our usual meeting was replaced by an out-of-town trip, so there were no competitions. A group of 28 ladies met at the early hour of 8.00am and car pooled for the day. The first stop was at the Oasis Gardens and Studio where anyone can visit and purchase a unique and diverse range of pieces and products for outdoors (pots, planters, water features, bells and chimes, sculptures and gardening items of all kinds) and a range of indoor and home décor products and gifts for all occasions. Needless to say, some of our ladies parted with their money and left with a range of items which were just what they needed!

Our second stop was Linley Rose's amazing garden in Paeroa. Many will know Linley from the Big Tomato at Papa Aroha. We had a wonderful morning tea to start the visit which included coffee and tea along with delicious scones and chocolate cake before wandering around Linley's gardens at the old Masonic Lodge. These gardens were also featured in a NZ House and Garden magazine article in May 2023. Everyone was very impressed and again found lots of inspiration about what can be done and were in awe of all the hard

work and dedication it took to develop them.

It was then time for lunch at The Refinery in Paeroa and lots of discussion about everything seen and purchased at the two venues so far. Following lunch, it was on the road again and with a stop at the Courtneys' Christmas Tree Farm and Decoration Barn. They grow and sell Christmas trees, and the Barn sells the decorations and the stands to ensure they are properly displayed. The Decoration Barn is filled with eye-catching Christmas treasures and an amazing collection of New Zealand-made and globally designed products. More purchases of very necessary items, or "we will be back to buy..." and lively discussions took place, before heading back to Coromandel Town.



Courtneys' Xmas Tree Farm

Of course, no trip is complete without a debrief and a sneaky wine, so a stop at the Star and Garter finished off the day.

Next meeting – **Wednesday 10 December**

Venue: The Club, Start Time: 12.00pm

Christmas Lunch: Shared Christmas finger food luncheon, Best Christmas Outfit/Costume, Secret Santa Gift to the value of \$10, Foodbank hamper donations.

Speaker: Jeni doing a demo of ideas for decorating your Christmas tree.

Arrangement: A Bowl and a Candle

Special: Berry Beautiful

We love to welcome new members to our monthly meetings which are held on the second Wednesday of each month at The Coromandel Combined Clubrooms at 1.00pm. Ph Jeni 021 0227 5341



Oasis Garden Centre

James & Turner
131 Kapanga Road
07 866 8805



JAMES & TURNER
KITCHENWARE · PAINT
HARDWARE · GIFTWARE
FISHING · CAMPING
MARINE · GARDENING
PLUMBING · ELECTRICAL

COROMANDEL FISH - DIVE - HUNT



**BOAT PARKING AT THE
REAR OF THE SHOP
- TURN BY THE FOUR SQUARE**

Rob & Jeni Ashman Owners / Operators
Rob - 027 592 7180 | Jeni - 021 636 119 | Shop - 07 866 8797
teamashman201@xtra.co.nz | 95 Kapanga Road Coromandel

Accountants

The Hauraki Taxation Service Limited

- ▶ For out of town independant accounting advice
- ▶ Established 1982
- ▶ Approved agents for Inland Revenue Department
- ▶ Offices in Coromandel Town & Thames

myob

xero

CASHMANAGER™ Smart Accounting Software

95 Kapanga Road, Coromandel
Ph/Fax: 07 866-8660

Em: coro@haurakitaxation.co.nz

Meri Kirihimete

~ NGĀ MIHI O TE TAU HOU ~

Merry Christmas and Happy New Year from your elected members and staff at Thames-Coromandel District Council.

We're reaching the end of what's been a busy and challenging year for our district. Our local elections have brought many new faces to the Council table and our Community Boards. We're looking forward to the year ahead as we continue the collective mahi of building deeper ties with our communities, groups and iwi partners.

For those in the community who work to take care of those fortunate enough to have a break over the holidays, thank you for everything you do.

Have a safe and happy holiday.



From Mayor Peter Revell and everyone at TCDC

Coromandel Town RTS upgrade

We're improving our Coromandel Town Refuse and Recycling Transfer Station to make recycling and glass drop-off more effective.

Glass and recycling materials are currently placed into open bins and bunkers. We're setting up a fully enclosed bin system for both materials, with slots for inserting material. This new system will protect dry recycling from wet weather and enable our contractor to collect it more efficiently.

Temporary drop-off solutions are already in place and permanent bins should arrive on site by mid-December.

Northern Coromandel visitors

Remember to take your refuse and recycling with you when you leave our northern campsites, and drop it to Coromandel Transfer Station, 525 Hauraki Road.

WELCOME TO YOUR COROMANDEL-COLVILLE COMMUNITY BOARD

Meet your elected members

Your Community Board represents local interests and provides a strong link between the Coromandel-Colville community and the Thames-Coromandel District Council.



Gavin Jeffcoat
Board Chair



Kate James
Deputy Board Chair



Jean Ashby
Board Member



James Davis
Board Member



Robert Ashman
Appointed Board Member

What's happening over Christmas and New Year?

KERBSIDE COLLECTIONS AND TRANSFER STATIONS

For year-round kerbside collection calendars, including summer peak collection dates from Christmas week to Waitangi week, check your local schedule at tcdc.govt.nz/bindays

Our seven refuse and recycling transfer stations are open daily over summer from 8.30am-5.30pm, and closed only on Christmas Day and New Year's Day. tcdc.govt.nz/rts



COUNCIL OFFICES

Our offices (including AA



services) are closing at 12 noon on Christmas Eve, Wednesday 24 December, and reopening Monday 5 January 2026. You can still reach us 24/7 at 07 868 0200 or customer.services@tcdc.govt.nz

WATER REFORMS UPDATE

Our Water Services Delivery Plan – a requirement of Local Water Done Well changes – was accepted last month by the Government. Our Council has begun work to establish an in-house business unit to deliver our wastewater, water and stormwater services from 1 July 2027, and to implement projects for regulatory compliance. tcdc.govt.nz/lwdw

THE 2026 COMMUNITY BOARD MEETING SCHEDULE WILL BE AVAILABLE SOON AT [TCDC.GOV.TZ/MEETINGS](https://tcdc.govt.nz/meetings)



@ThamesCoromandelDistrictCouncil



coromandel_tcdc



Get our free eNewsletters!

www.tcdc.govt.nz/subscribe

tcdc.govt.nz

customer.services@tcdc.govt.nz
Private Bag, 515 Mackay St, Thames
Phone: 07 868 0200

Christ Church

By Father Andy

It's that time of year again, Christmas is fast approaching. John and I have just returned from Europe where we've been to attend to some business. We visited the South of France and the Cote d'Azur where preparations for the festive season were in full swing – Christmas lights and decorations, shop window displays and all the rest of it.

Of course Christmas for the retail business is all about making money, getting people into the stores to buy presents for loved ones and looking to improve on last year's profits. But there's a downside to this annual ritual and sadly those on low incomes often fall prey to the excitement in the air and end up with the misery of debt early on in the new year.

But what to buy? What to buy dad, mum, aunt? I've always found this is a major difficulty if we want to buy a gift that is personal and useful rather than something that gets put away until we have a sort out later in the year and send things off to the "op shop".

Decisions, decisions, decisions! Christmas perhaps brings into focus how life is made up of the decisions we make. So for whom do we buy and what do we buy, who do we



invite round for Christmas Day, whose party do we go to, where will we go on holiday next year, do I apply for that new job, should I move house, city, country even? Some decisions are easy, others more difficult, will my decision make me and others happy or otherwise!

These are the sort of things that we have to decide upon and there are others more important of course, throughout our lives.

As we prepare for the Christmas festival we might want to remember the decisions those involved in the nativity story had to make. For instance when the angel Gabriel appeared to Mary to announce that she would bear the Son of God and nurture him into adulthood, she could have said "Oh no I'm not having any of that" but instead she calmly acquiesces to God's will and says, "Be unto me according to your word". Her husband-to-be could also have walked away from a difficult situation when he learned that Mary was expecting, but instead he stayed loyal to her and loyal to God.

As I have had to make significant decisions in my own life I've learned to place my decisions before the Good Lord bearing in mind the words of St. Paul in the New Testament that read:

"The peace that Christ gives is to guide you in the decisions you make; for it is to this peace that God has called you" ...

... and underpinning this has been

those words found in Psalm 20 where we read:

"May he give you the desire of your heart and make all your plans succeed."

By doing so I have known the way forward to be a creative way one.

With all this in mind I would invite you to the Christmas schedule of services that we have planned at Christ Church Anglican Church on Tiki Road over the Christmas period where we can reflect upon the decisions that Mary, Joseph and others had to make that enabled the love of God to come into the world in the person of the Lord Jesus Christ which is what Christmas is really all about.

Sunday 21 December – "Christingle Celebration" at 10am. Bring the kids and an orange ... an orange? Come along and find out what that's about!

Wednesday 24 December – Carols & Holy Communion at 6pm ... for everybody!

Thursday 25 December – Christmas Morning Celebration at 10am. Bring a favourite gift to show off!

I hope you'll come along and share Christmas with us but what ever you have planned it's my sincere hope that you will find peace and blessing during the festival of the Christ Child and always!



WWW.PARRBUILDERS.CO.NZ





YOUR LOCALLY OWNED AND OPERATED BUILDING COMPANY

Servicing the Northern Coromandel and surrounding areas

Specializing in high-end new builds & renovations

With expert craftsmanship, attention to detail and a trusted team, we bring your vision to life.

ABOUT US

Our commitment to customer satisfaction sets us apart. From concept to completion, we prioritize safety, quality, and strong working relationships every step of the way.

Solutions

- Luxury New Builds
- Premium Renovations & Extensions
- Decking and outdoor living spaces
- Insurance work



Let's Build Together!

Contact us today via our website
www.parrbuilders.co.nz
 Call us on 0277888043

Brett Parr is a licensed building practitioner and is also a member of the NZ certified builders association

Patchwork & Quilters

By Sue Smith

Christmas is fast approaching. We will take a break over December and January. Will advise commencement date for the New Year in the next issue of the Chronicle.

Had another fun class recently on Foundation Piecing. Traced a pattern onto tracing paper. Place fabric on wrong side of paper and sew on right side of paper. Makes for exact stitching in the same place on each block. For our class we did a Christmas tree which could then be turned into a coaster or tree decoration. It was all about the technique.

We meet at the St John Ambulance Rooms on the 1st and 3rd Monday of each month, 9.30am to 3.30pm. Feel free to call in and see what we are up to. New members welcome. Contact – President, Fiona Neal 027 373 6991 or Secretary, Michaela Green 021 028 71879





BUILDING CENTRE

PH: 866 8848

"We'll see you right"



Liz Cameron's book signing

Library News

By Dee Beavan

By the time you read this we will have wished Jasmine a big farewell, her last day was Friday 14 November. We wish her all the very best on her next adventure! It's been such a pleasure having her as part of our team, her skills have made a real difference at the library, and she'll be greatly missed.

I'd like to introduce myself as the new librarian, I'm Dee Beavan. I have been a dedicated volunteer and bring a wealth of experience to my new role. I have completed training with the committee, Jasmine, and the Thames librarian. I am excited to take on this role.

Last month the library was lucky to host Liz Cameron for a book signing event celebrating her new release, *Liz's Kitchen*. It was wonderful to see the library buzzing with excitement, thank you to everyone who came along and supported this special event!

I'd like to thank, on behalf of the Library, Andy Marshall, for his very kind donation of a copy of *Are You Trying To Kill Us?* Written by Andy Reid, about 20 years of Adventure Racing Coromandel. We are very proud to have this in our collection supporting local authors.

In December we will be doing our Christmas raffle if you would like to stop in and grab yourself a ticket. All proceeds go directly to supporting the library.

Please note the library will be closed from Christmas Day, reopening on **3 January**. We wish everyone a safe and happy Christmas and look forward to seeing you in the New Year!

Museum

By Maureen Kimber, secretary

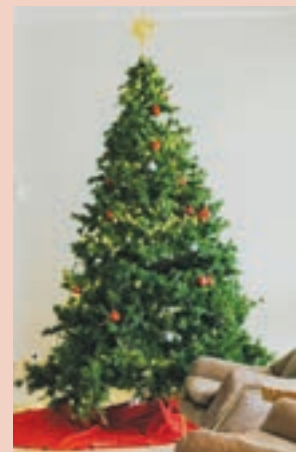
In early October the Museum re-opened for the summer season and it has been busier than in previous years. At present we are only open for four days per week, but after Christmas every day will be available to welcome visitors in exploring the history of Coromandel, with mining, logging, historic displays and photographs, not to mention our granite history display, which has created so much interest and which will be in situ until the end of January.

Among other updates, we have been working on the Marj Moore exhibition room, which is now an attractive reproduction of the lifestyle enjoyed by families some 50 or more years ago. This room is our main feature for Christmases' past, with home made decorations, a splendid tree and a \$3 lucky dip for children.

As you know from past editions, we work closely in conjunction for promotion of the Stamper Battery, as so much of our history is intertwined. They are now open seven days a week, and in addition to the viewing of the Battery working, they are offering the experience of panning for gold. As we now have a weekend ferry service we are also promoting The Waterworks on the 309 Road as an ideal way to enjoy what Coromandel Town has to offer for visitors.

Lastly, but by no means least, we have recently received an email from the Waikato Historical Society regarding the future of Hockin House, a listed building from 1893 which was originally the home of the hospital superintendent and is now the Society's club headquarters and a museum. With a dwindling ageing membership, the upkeep of the building can no longer be afforded and the Society may be forced to surrender the lease to the local council and dispose of the Museum holdings. This must never be our own museum's fate. We have a membership of about 50, but without a younger demographic becoming involved, we must ensure the future of the Coromandel Museum and we do need to recruit younger members to carry on the support and enthusiasm needed.

This is a timely reminder of our members' Christmas dinner at the Top Pub on **Sunday 7 December** from 6pm. Please let us know if you are happy to attend and meet the current committee. Thank you for taking the time to read this article, and we look forward to seeing many of our members at the dinner, and indeed our community paying a visit to the Museum. A very Merry Christmas, Meri Kirihimete to everyone from us all.



Beautiful wooden joinery

INCLUDING:

- NEW ARCHITECTURAL
- TRADITIONAL VILLA AND BUNGALOW STYLES
- RETRO-FITTING EXISTING JOINERY WITH DOUBLE GLAZING

email info@woodenjoinery.co.nz

White Star Trail

The White Star Trail is a new three-day, three-night, self-guided walking experience opening this summer, inviting walkers to journey into the remote and rugged heart of the Coromandel Peninsula. Beginning at White Star Station, the trail leads through native forests, across sweeping ridgelines and past hidden waterfalls on exclusive private tracks. This is the Coromandel Peninsula as few have experienced it.

Walkers will have access to 35km of trails winding through the 1,100-hectare working farm. Adventurers will traverse nearly 400 hectares of QEII-protected native forest, climb to panoramic lookouts, and walk paths that few will ever tread.

The White Star Trail takes walkers through landscapes that shift with every step. Grass farm tracks give way to dense native bush. Valley floors climb to ridgeline heights. Old miners' trails weave through nikau palm groves. And everywhere, views that span from the Hauraki Gulf to Great Barrier Island.

Megan Nunn, Marketing Manager for Destination Hauraki Coromandel, says:

"The launch of the White Star Trail marks an exciting new chapter for Hauraki Coromandel's tracks and trails network. With the global appeal of walking and hiking experiences continuing to rise, trails like this not only showcase our region's stunning natural landscapes, but also deliver meaningful benefits for our local communities and economy."

Accommodation along the trail ranges from restored farm cottages to off-grid bush cabins tucked deep within the forest. Each night offers a warm haven with comfortable beds, hot showers and the rare quiet that only wilderness can provide. Daily meals are included, with shared dinners celebrating local flavours and station hospitality.

The trail has been developed in partnership by sixth-generation station owners Karl and Tellic Evans and trail designer Nick Reader of Element Events.

Nick Reader says:

"The Northern Coromandel has been my playground for more than 30 years. Working with White Star Station to open these landscapes to others is incredibly special. This trail offers people the chance to escape, explore and truly recharge in one of Aotearoa's most remarkable places."

The White Star Trail experience supports the ongoing care of Coromandel's environment. For every trip taken this summer, one native tree will be planted on White Star Station to help restore biodiversity and strengthen the mauri of the land. Walkers will also have the option to contribute further to local planting and restoration projects, enabling every journey to give back to the place that makes it possible.



Real Estate Matters

By Glen Wells, Harcourts

Q. My partner and I are thinking of making an offer on a property. Should we make the offer and rely on a clause for a lawyer to approve? Or should we have our lawyer look at the Sale and Purchase of Real Estate first before signing?

A. Very simply, best practice is to have your lawyer review prior to signing. I would suggest prior to looking at real estate one visits the www.rea.govt.nz website where there is a host of information to help you before buying (or selling for that matter).

It is very common now to be told to place an offer with your conditions to purchase, including a clause for your lawyer to approve. Then send it to the lawyer after signing.

This is to speed up the process and likely avoid any interruptions or questions the lawyer may have. The fact of the matter is that salespeople are required to advise you to seek independent legal advice prior to signing any legal documents.

You likely when viewing the home have been given some pamphlets including any disclosures about the home. On closer inspection these documents may have information which means it may not be suitable for the bank to loan in your situation. Or at the very least require that a tradesperson be spoken to before advancing further.

Yes it may slow things down a little, but caution before cost. Your lawyer is there to protect you. Technically the salesperson is working for the vendor and being paid by the vendor. Yes they are under obligations to disclose etc. But best practice is to seek independent advice, impartial to the sale.

Different property and circumstances require different protections for the purchaser and the vendor. Especially where the vendor is removing warranties, or advising you are purchasing "as is where is", even just for one thing let alone the full purchase. These conditions and statements can have far reaching consequences for the un-wary.

By seeking advice before entering into a contract you may ensure better protection for yourself, you may be advised it is simply not practical or possible for you to get a loan on the property.

Things such as flood zones, earthquake prone, coastal restrictions, even things you may wish to use the property for may not legally be done.

Building structure or cladding may be prohibitive or require replacing, can you afford to deal with the cost of repairs? Will the bank be willing to take on the risk?

Best practices: www.rea.govt.nz

Offset your energy costs & enjoy backup support with a battery storage solar energy system. Call the specialists now

GOOD ENERGY
SOLAR ENERGY SOLUTIONS

Phone 021 606835
Email: info@goodenergy.co.nz

SOLAR ENERGY
www.goodenergy.co.nz



Llandem Consulting Engineers

Derek Stewart
CP Eng MIPENZ

- Structural
- Civil
- Geotechnical

llandemengineering@gmail.com
(07) 866 6704
027 442 4234





Wyuna Bay 1275 Wyuna Bay Road
Wyuna Bay Jewel - \$2,995,000



JUST LISTED

Coromandel 1295 Rings Road
Renovated bungalow Coromandel - \$740,000



Coromandel 2886 Long Bay Road
Open Views : \$1,800,000



Coromandel 40 Victoria Street
Heart, Soul and Taste - \$999,000



Little Bay 867 Tuatewa Road
Run Out Of Superlatives? - \$875,000

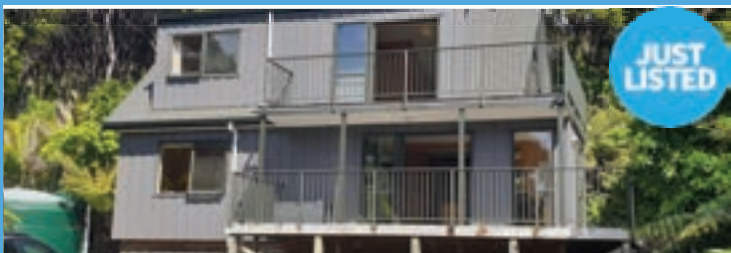


Coromandel 1299 Rings Road
Refurbished Retreat - \$650,000



JUST LISTED

Coromandel 353 Bellville Drive
Elevated Excellence in Bellville - \$435,000



JUST LISTED

Tuatewa 5 Waihirere
Tranquil Oasis - \$775,000



Kennedy Bay 1182 Kennedy Bay Road
Refurbished Retreat - \$599,000



Coromandel 275 Lillis Lane
Dancing Stream - \$569,000



Tuatewa 56 Waihirere Road
Oceanview Retreat - \$750,000



Coromandel 800 Buffalo Road
Elevated Views - \$1,125,000



Coromandel 65A Victoria Street
Cutie in Coromandel - \$589,000



Coromandel 1297 Rings Road
Charming Renovated Delightful Cottage - \$630,000

Ann's Good News, Naturally

Strong immunity, vaccinations and informed decisions

Studies have shown that your immunity from infection is greater, lasts longer and more effective, than immunity from vaccination. And my clinical experience and studies prove this.

When vaccines are discussed, we are told that "all vaccines are safe". Vaccines are the only class of drug in which this term is used. We aren't told that any other type of drug has no side effects and is safe. Vaccines are not all safe, and they are all different. We are all different and should require personalized consideration when it comes to medicine. Different people – different outcomes. Different vaccines – different outcome

Vaccine injury, minimizing the risk

I'll be honest. I don't like vaccines. Probably because in my clinic, as a naturopath I have seen more than my fair share of people who have "never been well since" taking their jab.

I don't like the ingredients in vaccines, nor the numbers of shots people, especially babies, are being enticed to receive. No discussion ever about keeping natural immunity strong.

The unethical one-sided enticement and marketing of gift vouchers for KFC, massages and more. No discussion of good nutrition and hygiene. In the last four years, I have had family members, friends and clients die, get cancer, suffer inflammation and blood clots on their hearts, lungs, brain and legs, and have strokes, and have sudden unexplained health issues. Sadly, it has been a nightmare for some.

And over the years, the numbers of cases have been increasing of children I have treated in clinic with ongoing respiratory tract issues, frequent chest infections, allergies, sinus, asthma, eczema, and behavioral and neurological issues. Teenagers who have been happy and well before being vaccinated, suddenly can't get out of bed, or have unexplained pain.

Pros & Cons – No matter what decision you make, please do your own research. Make an informed choice.

Preventing infection naturally

Preconception care – healthy sperm plus healthy egg, potentiates a strong wholesome human for life.

Healthy pregnancy. Throughout pregnancy, know the specific nutrients required for foetal development, and of the gut immunity, where all health stems from.

Vaginal Birth and Breast feeding – Inoculate baby with immune boosting good bacteria from birth canal. Breast milk provides vital colostrum, good fats, and immunoglobulin A immune boosting



antibodies from a year of breast feeding.

Vegetables as first solids at 4-5 months. Avoid grains as they are too hard for an immature digestive tract to digest and cause allergies and reflux. Encourage healthy eating for life.

Childhood illnesses

Measles, mumps, rubella, chickenpox etc., infection, inflammation, and often fever. A fever is an indication that your immune system is functioning. It is necessary to support the body coping with infection. For decades I have used herbs, minerals and specific homeopathic remedies successfully. Allow the fever to run its course. Fevers that don't rise too high have a lot of healing power in them. To prevent it from getting out of control, continue to maintain optimum hygiene, rest in darkroom, sip water, and treat with natural medicine. Measles death overseas in recent years occurred only where there were poor sanitary standards. Not in New Zealand

Illnesses throughout life via exposure to viruses, parasites, bacteria, and toxin is unavoidable. Be prepared. A primed and healthy gut immunity and microbiome enable best outcome. Live responsibly, safely and preventatively.

Let's keep the bar high and focus on supporting your immune system to work as nature intended.

Need treatment?

I can help with: preventing viral infections, acute viral infections, post viral infections, vaccine injury.

Are you low in the immune boosting minerals? Take the test. www.activeelements.com, username 259077, password 579819.

Phone or text for an appointment 021 046 1647



Age Concern

Staying Safe – a refresher course for older drivers

- Had your licence for decades but never refreshed your Road Code knowledge?
- Feeling unsettled because you have a medical coming up to renew your licence?
- Curious about what all these changes to road layout and signs mean?

Come to our free classroom-based driving refresher. It's less than an hour for every decade you have held your licence. We promise it is engaging and not boring!

Morning tea included

Date: **Wednesday 4 February 2026**

Time: 9.15am for a 9.30am start to 1.30pm

Venue: Coromandel Bowling Club

Enrolments essential: Email coordinator@achc.org.nz, phone 07 868 9790



Natural Medical Centre

The natural alternative for all your health requirements

For appointments,
phone or text: 021 046 1647
or email: annk-b@ps.gen.nz

www.naturalmedicalcentre.co.nz

Ann Kerr-Bell

B.Hlth.Sc. (Comp.Med.)
Adv.Dip.Naturopathy
Adv.Dip.Med.Herb. MNZAMH

Naturopath
Medical Herbalist
Nutritionist
Massage Therapist

FOR EXCEPTIONAL WINDOWS & DOORS

FAIRVIEW THAMES

10 Millar Place, Kopu, Thames

Love
your
view

fairview
EXCEPTIONAL WINDOWS & DOORS

P: 07 868 9105
office@fairviewthames.co.nz
www.fairviewthames.co.nz

Silver Swans Adult Ballet Class

By Marilyn Swan

Dance for your health and well-being and fun. Professional and accessible approach.

Classes: 10-11.15am

Tuesdays – Whitianga

Town Hall

Wednesdays – Citizens Hall, Coromandel Town.

I am a professional dance teacher for almost 50 years and our class at the beautiful Citizens' Hall Coromandel Town has been going strong for six years now. Ballet is an international activity and certainly in the last few decades its benefits as a mainstream fitness activity have been recognised and celebrated. There has been a significant increase in older participants to ballet classes through the Royal Academy of Dance's Silver Swans Syllabus. I'm a trained and proud advocate of this programme and delighted to offer it here in the Coromandel. This is a researched, specialised syllabus with proven results suitable for people at all levels with a focus on improving physical health and strength while also providing an outlet for creativity and expression to music.

Whether you've never danced before or want to get back into the swing of it, you'll feel the benefits of a Silver Swans adult ballet



class. It is never too late to learn to dance and our class is very accessible. We start with a gentle warm up, followed by barre work which is integral for core stability, before we move to centre practice. As a teacher, I am inspired by music and enjoy taking time to find beautiful tracks for our exercises which encourage expression.

Silver Swans Licensees through the Royal Academy of Dance are trained specifically to teach Ballet to adults with a range of abilities. Silver Swans classes have been designed for the over-55s, but whatever your age, this class provides wonderful benefits with elegant exercise to beautiful music, developing, good posture, self-esteem and the chance to meet new people in a safe and encouraging space.

With careful tuition, participants have found that they have improved posture, mobility, memory, balance, strength,

flexibility and wellbeing overall. Silver Swans dancers are encouraged to work at their own level.

We regularly have newcomers to class who quickly pick up the choreography and regular attendance generates the best physical benefits.

The Royal Academy of Dance is accepted by the "Live Stronger For Longer" organisation, which advocates for reducing your risk of falls, improved physical function, and enhanced quality of life.

I hope you will come and join us, and experience the benefits!

For enquiries and further information, please contact Marilyn, phone 027 336 5263, email swanebbs@gmail.com

Coromandel Contract Bridge

By Judy Bronlund

Our AGM will be on **Monday 15 December**. This will also be our last gathering for the year, we will be starting to play again at the beginning of February. Thanks to all who have been playing throughout the year. Visitors to our town are most welcome to join in with us at the St John's rooms on a Monday evening. Seasons greetings.

Contact Jackie 02 061 6876



Fresh new season Pacific oysters instore!
(grown naturally and locally)



Every celebration deserves fresh Pacific oysters, have you ordered yours?
Check out our online shop www.coromandeloysters.co.nz/shop

Christmas orders deadline Monday 15th December, 2025

1611 SH25 Manaia Road, Coromandel. Phone: 07 866 8028
www.coromandeloysters.co.nz/shop



Coromandel Independent Living Trust

As we wrap up another busy and rewarding year, we want to thank our wonderful community for the ongoing support. Your kindness, participation, and positivity continue to make our work meaningful, and we're grateful to be part of such a connected and caring community.

Our office, Te Pūhahi Whaiora, will close for the Christmas break on **Friday 19 December** and will reopen on **Monday 19 January**. We encourage you to share these closure dates with any whānau who may need to know.

We wish you and your whānau a Merry Christmas and a Happy New Year.

Coromandel Community Van

Our van travels to Thames and back every Thursday! Door-to-door pick-ups and drop-offs are available within Coromandel Town, or you can be picked up from our office at 150 Pound Street. A koha of \$15 for a return trip would be appreciated to help keep the service accessible.

Departure: 9am from the Resource Centre, 150 Pound Street, Coromandel Town.

Return: 2pm from Pak'nSave, Thames

To book a seat, please contact us on 07 866 8358 or visit us at 150 Pound Street, Coromandel.

A thank you to our Te Mana Tangata supporters

On 14 November, our Te Mana Tangata team hosted a morning fundraiser featuring a delicious range of baked goods and a sausage sizzle to help raise money for their end-of-year celebration and art supplies for 2026. The event was an incredible success – all baked goods sold out within the first hour, and the team raised over \$500 toward their celebration.

We would like to say a huge thank you to everyone who purchased



something on the day, and to the incredibly generous local businesses below who donated items in support of Te Mana Tangata: Four Square Coromandel, Long Bay Motor Camp, Top Town Takeaways, Wharf Road Variety Store, Café & Artisan Bakery, Coromandel Super Saver & Lotto, Maria Blundell – Harcourts Coromandel, Kai Manahau, The Coromandel Grazing Co.

The Bizarre's Fill-A-Bag Fridays

The Bizarre is overflowing with quality second-hand clothing, so it's the perfect time for a wardrobe refresh! Every Friday, you can purchase a bag for just \$5 and fill it to the brim with assorted clothing of your choice.

Come along and see how much goodies you can fit in your \$5 bag!

Coro Street at the Keltic Fair

For the past two Keltic Fairs the Coromandel Business Association along with the Keltic Fair organisers has offered the chance for Coromandel artists and artisans to have a stall at the fair for a greatly reduced rate in an area we call Coro Street.

Twenty stall holders took part last year offering a diverse range of goods including paintings, pottery, plants, screen prints, decorative soaps, cakes, blacksmithing demos etc. The service is available again for this summer's fair so the call is out for all those who would like to take up this special opportunity to contact Pete Sephton on sephtonpete@gmail.com to register your interest. A limited number of gazebos are available for hire on a first come first served basis so please get in early.

Each site is 3mx3m and Coro Street will once again be located on the top field of the school.

4
SQUARE

COROMANDEL

YOUR
LOCAL
FRESH
GROCER

OPEN 7 DAYS
50 WHARF ROAD, COROMANDEL

Himalaya shop : Colville

Hi Everyone

The Himalaya Shop will be open daily through December month. We will not be open on Christmas day and boxing day.

Before Christmas our times will be from 10 a.m. to around 4 p.m.

After Christmas 10 a.m. to 5 p.m.

you may contact us at the shop on 07 8667 224.

Anette's mobile 021 139 7838, Rob 021 155 8559

email robbnet@yahoo.com

Peninsula Pest Services



Contact us for control and prevention of insects, rodents and other pests!

Phone Simon English on 027 555 1271

Email: peninsulapest.nz@gmail.com

www.peninsulapest.co.nz



Grey Power Coromandel Inc

By Patricia Whimp

Grey Power Coromandel had their Christmas meeting on 19 November with 17 in attendance.

Currently, the membership stands at 204 financial members of which 56 have joined this year, compared to 24 new members last year. We still have 39 unfinancial members, whom will be dropped off our register shortly. Please be aware that this also will automatically cancel the discounts with Grey Power Electricity.

A submission was reintroduced for the Medical Insurance Premiums to be subsidised if carrying a Community Services Card. The meeting passed submission unanimously and now will be taken to the Zone meeting later this month.



The constitution was discussed, and the changes have been accepted by the meeting and will now be sent to the Grey Power Federation Association for approval. Once approved, it will be submitted to the Incorporated Society.

A discussion on creating a "Grey Power Help Group" made up of able-bodied members, to assist with members who have difficulty with minor tasks around their homes. See more in the January Grey Power Newsletter for details.

Everyone wore a Christmassy hat, and the ones that didn't bring hats were lent one for the afternoon. The winner's hat was a fabulous hat in a Christmas theme!



An afternoon tea was shared by the members with a Christmas theme.

We look forward to seeing you all at our next meeting in February – bowling with a sausage sizzle. Until next time, take care, be safe!

President – Brian 027 319 0172 (beeandgee@hotmail.co.nz),
Membership Secretary – Carol 021 081 66129 (carolcarson@xtra.co.nz), Treasurer – Patricia Whimp 0274 985 227 (greypowercoro@gmail.com)

Community Gardens

By Rachel Benmayor,
Community Gardens
Coordinator.

December garden news

Wow with all this rain and some warmth all our gardens have taken off!

Please feel free to come and harvest the vegetables you enjoy as you need them.

We have some of our volunteers away on holiday and recovering from the various flus that seem to be plaguing the community at the moment so the gardens have not had the love and care they have needed lately. We are wanting to recruit some new volunteers to come and help so if you have some time to donate we would love to have you on board.

Friday mornings are community garden gathering. We first meet at the old Hauraki gardens at 9am and then around 11am we go up to the newer gardens behind CILT.

Riyah runs the veggie garden for the community food boxes but we work together to help and support all the gardens there. We are a great bunch of folk, we all work to our own capacity, there are no expectations of people, and the gardening jobs are varied.

Please feel free to come and get veggies, come and see what we are doing or give a hand anytime.



WE OFFER
INSPIRATION
AND EXPERT
ADVICE

EVERYTHING
YOU NEED TO
REFRESH
YOUR SPACE

BOOK A FREE
IN HOME
MEASURE
AND QUOTE

07 866 0035

2/9 Joan Gaskell Drive, Whitianga

sales@gbwhitianga.co.nz

www.facebook.com/gbwhitianga



Retaining walls & Landscape
Water supply & Tank installs
Gabion walls
Culvert installs

Housepads, Driveways
and access
Foundations & Subdivision
Metal Deliveries

CALL NOW FOR A FREE NO OBLIGATION QUOTE
LEWIS 027 250 5076

Hon Scott Simpson MP for Coromandel

While it has seemed like a long year, it's still a shock to be writing my December column for the Coromandel Town Chronicle. In just a few short weeks we'll be entering the holiday season where we will see countless holidaymakers coming to the Peninsula to experience our way of life.



I know there will be a fair few people making use of the Auckland to Coromandel ferry, which should give more people an incentive to spend some time in our region. It's terrific to see this service back up and running, and I can't wait to try it when I get the opportunity.

NZTA have also completed repairs to the Boundary Creek Bridge and reinstated the bridge to two-lanes. That will be welcome news for everyone travelling the Thames Coast road, because it means one less bottleneck during the busy summer months. I acknowledge the repairs have meant a period of disruption for businesses, residents and travellers, especially during the bridge's week-long closure. However, I must credit NZTA and their contractors for their efforts to ensure the repairs were completed as quickly as possible.

With the bridge repaired and the ferry service in operation, the Coromandel Peninsula is ready and waiting to be explored. Whether you're a local, a returning regular, or it's your first time here, I encourage you to get out and experience everything our region has to offer.

The end of the year also means that Parliament only has a few sitting weeks left, which is a good time to wrap up what has happened in politics in 2025.

I was pleased to see the Hauraki Gulf/Tikapa Moana Marine Protection Bill get its final approval from Parliament. The Bill represents a new era for marine protection for the Hauraki Gulf, with the establishment of 19 new protected areas, covering more than 800 square kilometres. This should result in a healthier Hauraki Gulf for all to enjoy, including future generations of New Zealanders.

As a government, we continue to focus on growing the economy so that Kiwis have more job opportunities and access to the services they deserve. These services include better access to cancer screening, where we have taken the first step to extend the nationwide breast screening age, with women aged 70 and 74 now eligible for free screening.

Similar measures are also being rolled out across the country for free bowel screening, with the starting age dropping from 60 to 58 immediately for those living in Northland, Auckland, and the South Island. The rest of the country will follow in March 2026, which will inevitably lead to earlier detection and lives saved.

Are you trying to kill us? – new local book

A friendship between Kiwi butcher Keith Stevenson and English accountant Andy Reid gave rise to Adventure Racing Coromandel. Keith sadly died in 2021; now Andy has written a book called *Are you trying to kill us?* about 20 years of running adventure races, the K2 bike race and the Kauri run on the Coromandel Peninsula.



The ARC was one of the first and the world's longest-running adventure race, with over 32,000 entrants over the years (in all events) including celebrities like Richie McCaw (he came 5th in his first adventure race in 2016), Jack Osborne and Jodie Kidd (for his TV programme *Adrenaline Junkies*) and cricketer Dion Nash.

Once a year hundreds of men and women ran, kayaked and biked on tracks, trails and tributaries Keith and Andy unearthed, cleared and created in their own weekend adventures all over the Coromandel.

Their races became legendary for myths and legends, for semi-dangerous challenges like jumping off waterfalls or crawling through mineshafts and for practical jokes like checkpoints guarded by sharks or (real) eels and guerrillas suddenly appearing from nowhere.

More events followed; the K2 bike race – New Zealand's toughest and most prestigious cycle road race and the Kauri Run, a tough ultra with shorter options and a community event. For every runner, a kauri was planted. All money raised from the events was used in the community to promote outdoor adventures and the events themselves brought huge economic benefit to the region.

"I sometimes thought that organising the races was more perilous than taking part in them," says Reid. "From nearly being shot by deer hunters to having National Radio fooled by one of our made-up legends – we somehow survived it all."

Written in a conversational, easy-to-read style, the book captures the laughter, camaraderie, and occasional chaos that defined ARC. Themes ranged from The Ghost of Jack Bean and The Akawhan Grail to The Lady of the Mist – each year bringing new twists, creative challenges, and unforgettable moments for competitors and volunteers alike.

Adventure Racing Coromandel wasn't just about endurance – it was about community, creativity, and spirit. Over the years, women's participation grew from 15% in the first race to 55% by the final one, helped by the energy of pioneering all-female teams such as Girls on Top, and inspiring a new generation of women's events like Spring Challenge and Spirited Women. All proceeds from *Are You Trying to Kill Us?* go to the Coromandel Bike Park, ensuring that ARC's adventurous legacy continues to inspire future generations.

It's also about their legacy; of inspiring generations, planting some 20,000 kauri trees and creating Coromandel Township's very own mountain bike park.

The book is 254 pages, high quality, with loads of photos, retail \$60. Order at www.arcevents.co.nz.

Book event

5.30pm **Friday 5 December** at Coromandel Bike Park, Hauraki Road. Come and try our tracks – free bikes available.

Meet Andy Reid, the author of *Are you trying to kill us?* All welcome.

Scott Simpson MP for Coromandel

Contact me anytime

0800 550 330 • scottsimpson.co.nz
mpcoromandel@parliament.govt.nz
 @scottsimpsonmp



Authorised by Scott Simpson, Parliament Buildings, Wellington.



New Zealand
Certified
Builders
Association



**MICHAEL WOOD
BUILDERS LTD
COROMANDEL**

mikewood@outlook.co.nz

021 143 1652

• NEW HOMES • ADDITIONS/REPAIRS • RENOVATIONS • DECKS/FENCES

Coromandel Embroiderers' Guild

By Heather Arthur

Well wasn't our exhibition fabulous... such a variety of amazing work to admire.

Congratulations to Diann Cade who won the President's challenge "Inspired by William Morris" with the book she made, and then inside it, detailed the life of William Morris plus a mat and drawing of how she made it.

Congratulations to Fran Campbell who was placed second with a lovely window hanging showing embroidered flowers and leaves and a bird inspired by the William Morris collection. Raewyn Penrose was the judge of the President's challenge. Fran was absent on the day.

Lots of comments about the colony of penguins (called a waddle) arranged together like they were climbing up the steps to their nests. They were individual entries but beautifully presented.

We now wait in anticipation till our February meeting to find out who won the peoples' choice award.

The raffle winners were:
Gourmet basket – Nigel Sparrow,
Embroidery – Nadine (no surname shown).

We are finished for the year now but we'll be back in February. Meanwhile do enjoy Christmas and New Year and if something you saw at the exhibition inspired you to start your stitching journey we would be delighted to share our love of embroidery with you. Happy Christmas.

We meet on the 1st Wednesday of the month from February to November. We welcome new members. Contact person: Win McMinn coromandelembroidery@gmail.com, ph 07 866 7508



Colony of penguins



Diann Cade (left) who won the President's challenge "Inspired by William Morris, with Raewyn Penrose (right), the judge

Mana

Dear Coromandel Community,

As we look toward the close of another year, we find ourselves filled with gratitude and gentle awe. It has been a beautiful year full of connection, nourishment, and inspiration.

Over these past twelve months, Mana has hosted 50 retreats welcoming people from near and far who sought renewal, grounding, and a sense of belonging. Alongside these gatherings, we also held 35 community events including community dances, garden days, working bees, concerts, and chanting circles. These shared moments are what make Mana feel alive. We are deeply grateful for every one of you who joined us and helped weave these experiences into being. Your presence, energy, and involvement continue to strengthen the heart of our community.

As we write this, our team is lovingly shaping the program for the year ahead and it is already looking exciting. We look forward to sharing it with you very soon.

Before we enter our summer rest period, we have one more gathering: our Summer Working Bee on **12-14 December**. This is a heart-centered community weekend where we come together to tend the grounds, refresh the gardens, and prepare Mana for the year to come. If you feel called to lend a hand, whether for a single day or the whole weekend as a commuter, please reach out to our office. All helping hands and open hearts are welcome.

The Centre will be closed from **Monday 15 December to 4 January** as our team takes time to rest, celebrate, and restore our energy before the season ahead.

New Year's Community Dance

We are delighted to invite you to a special New Year's Community Dance on **Wednesday 31 December**, 10am-12 noon.

This will be a joyful, heart-opening space to move together, shake off the year, and welcome the new one with intention, freedom, and community spirit.

\$35/\$30 or pay as you are able. All are welcome. Come as you are, and dance your way into 2026.

As the holiday season approaches, may you be met with spaciousness, joy, and the vibrant energy of summer. Thank you for being part of our extended Mana family.

With warmest blessings from all of us at Mana, aroha nui,
The Mana Team

For all bookings and enquiries go to www.manaretreat.com, (07) 866 8972, be@manaretreat.com, 608 Manaia Road, Coromandel

IMPROVE YOUR EYESIGHT NATURALLY

with world-renown author
Peter Grunwald

at the

MANA RETREAT CENTRE
Coromandel 5-11 January 2026

Consultations, Eyebody books
and Pinhole Glasses

info@eyebody.com www.eyebody.com

UPCOMING RETREATS & EVENTS

Bookings: www.manaretreat.com

DEC 2-4	Repotted with Lisa O'Neill
DEC 5-7	Relax & Wellness Weekend with the Mana Team
DEC 12-14	Summer Working Bee
DEC 15-JAN 4	Summer Rest Period
JAN 5-11	Eyebody with Peter Grunwald
JAN 12-18	Sufi Retreat
JAN 20-25	DUPANZ Summer of the Soul – The Fullness of Being
JAN 30-1 FEB	Relax & Wellness Weekend with the Mana Team
FEB 5-8	Your Inner Retreat with Rachel Hunter & Renee Stewart
FEB 12-15	Reiki Retreat with Uli Brell

COMMUNITY EVENTS

Open Floor Community Dance 9 Dec 10:00-11:45AM
New Year's Dance 31 Dec 10:00AM-12:00PM

be@manaretreat.com | 608 Manaia Road,
Coromandel New Zealand, 3581
+64 (07) 866 8972

rangatahi OUR CHILDREN

Coromandel Area School

Korero from the kids

A group of five students headed out for a once in a lifetime experience on the Spirit of Adventure recently. They were fresh off the boat the day this piece was written, here is what James King had to say about his experience.

Spirit of Adventure

By James King

When we arrived there were heaps of people already there. Everyone was feeling nervous about staying with random people from other schools from around New Zealand. The boat was bigger than I expected, there were lots of ropes going from one place to another. I had no idea what they were for at that stage.

We all went onto the boat and packed all our stuff into drawers. We were in rooms with bunks in vertical rows of three hammocks. They had a metal bar across the sides and then canvas through the centre that kind of hung. Below the bottom hammock were three drawers with numbers, that's where we put our stuff. It was pretty small. There was a boys room on one side of the ship and the girls room was on the other.

We set off on Thursday afternoon. We

COROMANDEL
AREA SCHOOL



went into where we ate, heard about chores, rules and what the groups were. That night we were just using the engine to get to our first location to sleep. We went past Rangitoto and anchored off an island not too far from Auckland for our first night.

Every morning we woke up at 6am and had to jump into the water by 6.30am. Then we had groups called Port A, Port B, Starboard A and Starboard B. One group was selected to do "specials" which was helping serving, and after meals cleaning up dishes, washing down the tables and the floor. At the end of the day all four groups had a chore, vege prep, scrubbing the deck, cleaning the accommodation and the last went to the galley and the after cabin (where we ate) to clean the floor.

We stayed in the Hauraki Gulf, we went to Waiheke Island and Kawau Island. On the second to last day we paddled over to land with the rafts and went for a walk around Motuihe Island, had lunch and had a swim. Then we did a little tag kind of game. We did a rope game where we all stood in a circle and held a rope. You lean back until the rope has tension and then someone walks around the rope using the people for balance. That was all

about teamwork and trust.

My highlight was climbing to the top of the mast. There were three platforms. Where you climbed got skinnier and skinnier. I'm pretty good with heights so it was fun, a bit of an adrenaline rush. It felt like it was about 50 metres high!

We all had a turn at steering the boat. All groups had to put up a sail each. Most days there was a good amount of wind for us to sail. It felt weird sailing rather than using a motor, we had to move the sails around pretty often to steer – we had to go in a zig zag at one point because we were sailing into the wind. Everyone was really nice, the kids were all really grateful and respectful. I met heaps of new people, we made a group chat so hopefully we stay in touch. You meet lots of new friends and it's really fun, not boring! The other kids were from Te Kauwhata School, Auckland Girls Grammar, Frances Douglas school from Taranaki (all boys school) and two schools from the South Island. I'm grateful I had the opportunity to go.

Coromandel Youth Group

At Hauraki House.

Coromandel Youth Group is for children aged 5–15yrs. We provide a supervised, fun environment where kids can hang out with friends and participate in a wide variety of indoor and outdoor activities. Parents just fill out a membership form.

Closed public holidays.

After school

5yrs+, Tuesday, Thursday and Friday 3-5pm.

For 10yrs+ school term time

Monthly Friday Night, outdoor games, **12 December**, 5.30-7.30pm.

Miniatures Game Club, Wednesdays 3-5pm, interactive tabletop games.

School holidays

5yrs+ Monday to Thursday 11am-4pm

Bring a packed lunch or money for hot chips, pizza or pies.

NB: Last day of 2025 – **Wednesday 24 December**. First day of 2026 – **Monday 5 January**.

For more information during open hours, call in or phone 027 217 9206, alternatively email: coromandelyouthgroup@gmail.com.

Thank you! Alongside kind donations received, we are grateful for grants from: Lottery Waikato, Trust Waikato, COGS, D.V. Bryant Trust, Aotearoa Gaming Trust, NZ Community Trust, Star & Garter Hotel's Give a Little Pizza Sundays



WWW.JAMESDRAINAGE.CO.NZ

Excavators | Tip Trucks | Bobcats
Auger & Chain digger hire
Skip Bins | STMS Services
Septic Tank Services | Portaloo Hire

1020 Tiki Road, Coromandel
p. (07) 866 8308
e. jamesdrainage@extra.co.nz

**Commercial sections
and units available**

For details please visit
www.coromandelbusinesspark.co.nz

GD HAULAGE
Cartage Contractor

Demo
021 902268
gdemus@outlook.com

Coromandel Community Preschool

By Shivawn Elliott

Spaces available

Kia ora kotou. We currently have several spaces available on our "over two's" side. Please feel free to pop in for a visit, pick up an enrolment pack and see if the centre is a good fit for you and your whānau. Whether you are looking for full or part time childcare, we can cater for your needs. We offer 20 ECE hours for our 3+ year olds and we also have WINZ subsidies available. Alternatively, please feel free to email us at coropreschool@xtra.co.nz and we can email an enrolment pack through to you.

November was another great month for us here at Preschool. With the finer weather here, we have been able to get back out in the community and do our walks and Music & Dance visits. We would like to take the time to thank our parent helpers who volunteer their time to come along and support us with our outings.

The warmer weather also means that our vegetable gardens are thriving. The tamariki have been doing an amazing job maintaining them and they have been able to provide their whānau with fresh produce.

In November we celebrated birthdays for Erika, Kane, Harrison, Jordan, Tiaki, Jenna and Lisa. We also welcomed Cleo to the centre. Nau mai haere mai Cleo.

We recently had our last Committee Meeting for 2025 and we would like to take the time to thank our committee members for their ongoing support within the centre.

We are looking forward to our Children's Christmas Party next month, where we will come together and reflect on 2025, have some shared kai and get a visit from Hana Kōkō himself!

Our last day of Preschool for 2025 will be **Friday 19 December** and we will reopen again on **Monday 12 January 2026**. We welcome any new enrolments up until then.

Check out our latest education review at www.ero.govt.nz/review-reports/coromandel-community-preschool.

The centre operates Monday to Thursday 8am-4pm, and Friday 8am-3:30pm. We are situated at 155 Pottery Lane (behind the Four Square) Please feel free to call in at any time for a visit



Kane and Erika celebrating their Birthdays at Music & Dance

Colville Bay Preschool

By Ruby on behalf of the committee



Thank you!

On behalf of Colville Bay Preschool we want to express our deepest gratitude to our amazing community and sponsors who have helped us keep the lights on throughout 2025.

Together we raised over \$12,000!

In an environment where hundreds of early childhood centres across the country are facing closure our combined efforts has meant our precious community owned preschool is still open and caring for the area's littlest learners. This has only been made possible by the generosity of our community and sponsors and the determination of our fundraising team.

Whether you have donated goods, bought raffle tickets, come to our fundraising dinners, brought Friday afternoon cakes from the Colville store or supported us over Labour weekend – thank you from the bottom of our hearts. The saying "it takes a village to raise a child" took on a whole new meaning this year.

Shout to the businesses who have supported us over the year: Four Square Coromandel, Fresho Thames, Pak'nSave Thames, Countdown Whitianga, Hereford and Pickle, John Ward, New World Whitianga, The Green Grocer Thames, Sacred Grounds Coffee, Coffee LaLa, Naughty Bean, Bidfood, Shott Beverages, The Warehouse, Anglers Lodge, Coro Cowboy Fishing, Colville Store and CO-OP, Colville Fire Brigade, Pahi Coastal Walk, Goodman Fielder, Woodlands Honey, Fishing and Hunting Whitianga, Coromandel Fish Dive and Hunt, MacKenzie Hair, Handmade by Delraye, The Chopping Block, Coromandel Pharmacy, Hoses Plus Coromandel, Colville Rural Freight and Eastern Couriers.

We are welcoming new enrolments for 2026. Come experience what makes our preschool special – the idyllic location, adventures in nature, the whānau centred community, the respectful and informed way our team of qualified teachers support the tamariki to thrive.

Wishing you a wonderful summer break with your friends and whānau.

WANT

NATIVE NURSERY & EDIBLES
WAITAIA RD, KUAOTUNU

A wide range of beautiful natives,
palms and fruit trees.

Potting mix, compost, mulch, chook manure.

Open Thursday- Sunday 8.30-4.30 or by phone appointment
Please phone Colin Hill 07 869 5910 or Cam on 021 620 798

TWENTYMANS
FUNERAL DIRECTORS
Since 1867

*Honour your
loved one's
legacy in the
best possible
way*



07 868 6003
funerals@twentymans.co.nz
www.twentymans.co.nz

mahi toi ARTS

Driving Creek Pottery Doings No. 10

By Millie Godfery and Matilda Halley

Introducing Millie Godfery, apprentice potter

In September, the production pottery team welcomed Millie Godfery, our first apprentice. Here is a little about Millie in her own words:

"I grew up in the beautiful Bay of Plenty, and spent many holidays in the Coromandel. The wairua of this peninsula is woven through me and I feel grateful to be making Kapanga my home as I take on this apprenticeship."

"The past few years I have been working on organic farms and market gardens in the UK, so in some ways the apprenticeship is a move in a new direction, having had little experience with making ceramics prior to now. However, values that matured in me through my work as a grower—care for the earth, connection to te taiao, slowness and attention, respect for traditional craftsmanship, and a necessary surrendering to elemental spontaneity—all feel closely connected to this mahi. I am also loving learning more about the history of this craft, particularly in terms of the clay arts and studio pottery movement in Aotearoa."

"Two months into this three year apprenticeship, and I feel constantly energised by the wealth of this kaupapa started by Barry and continued on by the wonderful DCR team and resident artists, friends and wider community. Through the guidance of our production potters Callum and Matilda, I am enjoying receiving training that combines the formal and technical traditions of the Leach studio (where Callum worked for ten years) with the "creative freedom and vernacular charm" that characterises Barry's Driving Creek. Coming to work every day, surrounded by the beautiful regenerated bush, it is a privilege to feel a part of Driving Creek's ongoing contributions to the enriching of Aotearoa's pottery tradition and standard."

Millie has been a joy to work with in the three months since she joined us. She is quickly picking up many of the skills needed to work as a potter. We are excited to see how she develops over the three year apprenticeship.

In September, we hosted resident artists Katie Arnold (Thames), Helena James (Whitianga), Hannah Strauss (Canada), Maya Stock (UK) and Brie Rate (Ōtautahi). Full bios are on our journal: drivingcreek.nz/journal.



Driving Creek apprentice potter Millie Godfery glazing pots in the production studio

PHOTO BY JESS MILNER



Pastel Artists Coromandel

By Rosemarie Murphy

Pastel Artists Coromandel held their Annual Pastel Plus Exhibition in Hauraki House Gallery in Coromandel Town in October. We had quite a lot of people through. It always interests me how many people don't know very much about pastels and what we can do with them. Several of the viewers wanted to know where and when we meet so we may get a few new members.

Sadly, the interest did not result in sales (except for a print and some greeting cards) but hopefully the message about pastels is getting out there.

Congratulations to Saskia on winning one of the PANZ Scholarships. She chose Julie Freeman for her tutor and we look forward to seeing her progress.

We meet every Monday morning from 9.00am until 12 noon at Rose's Studio at 860 Tiki Road, Coromandel Town. If you are interested come and have a go. You will be made very welcome.

We will be stopping for a break over Christmas after our Christmas luncheon and will restart in early February.

Contact Allan Beaver 07 866 8053 or Saskia Riemersma 027 296 1670

Coromandel Christmas Art Exhibition

Sunday 14 December until Saturday 10 January at Hauraki House, Coromandel Town.

Come to opening, mix and mingle from 5pm, **Sunday 14 December**.

Artists exhibiting include: Michael Smither, Gian McGregor, Lindsay Garmson, Bronwynne Cornish, Denys Watkins, Rod MacLeod, Kim and Kevin Brett, Cindy Alger, Pete Sephton, Petra Meyboden, Allan Beaver, Kay Ogilvie, Maia Astwood, Tracy Johnson, Ian Webster, Fiona Tunnicliffe, Louise Penberthy, Jan Kocian, Annette Kaye, Tim Fuller, Iain Crichton, Fatu Feu'u, Barbara Von Seida, Yvonne Szabo, Iona Matheson, Carolin Hahn, Bob Drummond, Mary Lee, Matilda Halley, Callum Trudgeon, Stuart Spackman, Heather Grouden, Mike O'Donnell, Linley Huggins, Anneka Borren, Pamella Annsouth, Jenny Shearer, Joanne North, Tom Elliott, Millie Godfrey, Andrew and Jeannie van der Putten.

Everyone is welcome.



DRIVING CREEK UPCOMING POTTERY COURSES

Dec 3

5 Day kurinuki Carving
with Elena Renker

Feb 16

5 Day Production Throwing

Mar 21

2 Day Jug Making
with Callum Trudgeon

Scan for more info or visit
drivingcreek.nz/workshops



Art Group

By Lindsay Nicholls

The Art Group is steering towards the Exhibition on late January as well as thinking about winding down for Xmas..

We will have a lovely get together for our end of year lunch in a local cafe..

It's a nice way to wind down and socialize after a productive year. We will recess over Xmas but rejoin on **15 January** if you'd like to join us.

Love to see new members in the New Year. We meet at Airfield on a Thursday morning 9am-12pm.

Merry Xmas to you all.

te taiao ENVIRONMENTAL

Driving Creek Conservation Park

The Driving Creek Conservation Park team are thrilled to have completed upgrades inside the fenced predator-proof sanctuary. It has been a huge team effort with Conservation staff getting help from



across other Driving Creek departments, a local builder, and even the Student Volunteer Army from Coromandel Area School.

We now have upgraded walking tracks, seating areas, and decks for everyone to enjoy. The wildlife sanctuary is always open and always free to enter, just a short stroll from the ticket office. Another option is to book a conservation tour! This new experience offers a chance to step into the forest and is a must-do activity on the Coromandel. By joining us, you help support Driving Creek's not-for-profit mission to protect and restore local native biodiversity.

Our conservation ranger, Sophie, will take you on a one-hour guided walk through regenerating native forest and into our 1.6-hectare predator-proof sanctuary. Along the way, discover cave weta and glow worms, and learn how this once-degraded landscape has become home to rare species



Sophie the conservation ranger at Driving Creek

such as pāteke, geckos, and kiwi. Keep an eye out for tui, North Island kaka, kereru, and piwakawaka as your guide shares the story of our conservation work and then enjoy a tea made from native tree leaves as you sit in a nikau grove.

This is a walking tour on unpaved tracks and stairs, so a moderate fitness level is required. Book online through the Driving Creek website for the tour, or just wander the sanctuary and enjoy it in your own time.



The Student Volunteer Army from Coromandel Area School enjoying new seating

MEG

By Steph Parkyn

Protecting pōhutukawa

At this time of year, the beautiful pōhutukawa are coming into flower with fresh new buds and leaves. And sadly, that's just what possums love to eat. Possums are particularly damaging to pōhutukawa because they prefer to eat newly expanding flowers and vegetative buds. This causes rapid canopy dieback. In just two or three years, an established tree can be killed by high numbers of possums stripping it bare.

This month we've been installing 70 self-resetting AT220 traps from NZ Autotraps to extend a possum trapping network along coastal pōhutukawa forest. Thanks to enthusiastic local landowners and funding from Waikato Regional Council we are able to link with Little Bay community and Habitat Tuatē to protect our coastal forests in northern Coromandel. We're pleased to report that in one month 132 possums have been taken out so far!

Back in October 2023, we installed a network of Autotraps in coastal pōhutukawa forest north of Waikawau for possum control. Camera monitoring showed a huge decrease in possum sightings in the first year (64%) and



that has been sustained in this October monitoring (now 82% below initial). Our monitoring is showing that these traps are not only reducing numbers, but most importantly are effective at stopping reinvasion of possums into the area. A fantastic and encouraging result for the survival of an iconic Coromandel tree!

Summer holiday reminders

We are so fortunate to share our beaches and bushclad hills with rare and endangered native birds. Look out for the speedy little tūturiwhatu (dotterel) trying to raise their chicks, kuaka (godwits) newly returned from Alaska, listen out for kiwi after dark, and remember to control your dogs or other pets when close to nature. In January, we'll be running some wonderful summer holiday events for you to go out and explore off-the-beaten-track places (even at night) and celebrating some of our special birds, frogs, geckos and insects at creative events for kids. We hope to see you in January and check out our Instagram, Facebook page or www.meg.org.nz for all the details.

Weave harakeke with Nici Greulich

As part of our Summer Holiday Programme, celebrated artist and flax weaving tutor Nici Greulich will hold a full-day workshop on **Thursday 8 January** in Port Charles where you will learn to prepare flax and weave a kono (four-corner basket). A fantastic opportunity for both beginners or more experienced weavers to learn from Nici. See her wonderful work in The Source gallery in Coromandel. Contact us on info@meg.org.nz for details, limited to ten participants, be in quick!

Ngā mihi nui.

PENINSULA ELECTRICAL SERVICES LTD

Commercial & Domestic Electrical Contractors



RAVINDER & SUE RAJ

Registered Electrical Inspector

P.O. Box 109
Coromandel

Telephone (07) 866 8166

Free Phone: 0800 4 Electrical (0800 435 328)

E-mail: ravinder@e3.net.nz

1750 S/H 25

Coromandel

Fax (07) 866 8162

Mobile (0274) 738 734



Hunchie Davies 021 796 452

Excavations Landscaping Siteworks

hākinakina SPORT

Golf Club

By Marilyn MacKenzie

A huge thank you!

We are very grateful to the New Zealand Community Trust (NZCT) and their partner venues – the Star & Garter Hotel



and the Thames Royal Oak Hotel, for the generous grant that helped fund our new John Deere tractor. Their support helps keep our course in excellent condition for members and visitors.

Coro Classic – Melbourne Cup 2025

A colourful and enjoyable day saw impressive results in the Mixed Combined Stableford. Trish Sturgeon scored 46 points in her

first-ever 18-hole round, paired with Ron Brooking's 37 points for a superb 83-point total.

Other Winners:

- Men's Nearest the Pin: Ross Mudgway
- Men's Longest Drive: Wiremu Watene
- Ladies Longest Drive: Janine Kerr

A special moment came with Glenise Robertson wearing the colours of Tidal Light, NZ Horse of the Year 1986–87, thanks to Warren Taylor.

Charity Tournament 2025

This year's Charity Tournament

was a great success, raising funds for Coromandel Area School students attending Hillary Outdoors (final total to come).

Congratulations to Richard Neal and Bruce Fitzpatrick, joint winners with nett 65.

Thanks to everyone who contributed – Paul Lawrence and Fi Neal, the ladies for catering, Kevin and the volunteers for course prep, and all who donated raffle items, including Four Square Coromandel.

Special thanks to Jeremy Scott for donating his framed photograph "Majestic Tū", he was recently recognised among Australasia's Emerging Photographers 2025. The raffle winner was Paul Lawrence.

Tom Daniels Memorial Shootout 2025

Despite torrential rain for a few holes the field battled through to a 13th-hole chip-off.

Winner: Ron Brooking. Runner-up: Dawson Hansen. Third: James Smith.

Volunteers Day

Thank you to everyone who came to celebrate our amazing volunteers, your efforts keep the club running strong.

Congratulations to Dave Sampson, winner of the Neal Family Trophy (9-hole).

Weekly Golf Programme

Monday – Junior Golf Programme: 3.30pm to 4.30pm course closed. A fun and supportive session for young golfers of all abilities.

Tuesday – Ladies Club Day: 9.30am tee-off (9 or 18 holes – ladies and men welcome). New to golf or never played before? Come along and give it a go! It's a friendly environment where you'll get plenty of encouragement and have some fun on the course.

Wednesday – Men's Midweek Club Day: 12.30pm tee-off (with the popular Meat Pack competition held on the last Wednesday of each month).

Saturday – Mixed Members Club Day: 12.30pm tee-off.

Affiliated visitors are always welcome on all club days.

Club carts are available for hire. Bookings are essential – call or text Marilyn on 027 253 7882.

Happy golfing



New John Deere Tractor with Greenkeeper Kevin Verner looking pretty pleased with the purchase

Coromandel Croquet Club

By Rawyn McKinney

Well, here we are coming to the end of another year.

It has been a pretty good year for the Croquet Club; we have been pleased to welcome some new members, and no one has moved away. The weather has been mostly kind to us, with very little playing time lost to rain. Our newer members have developed great skills, and we have had some wonderful days of croquet with close, but friendly competition.

At this time, on behalf of the members of the Coromandel Croquet Club, I wish everyone a happy, joyful and safe Christmas holiday period in the company of family and friends and send best wishes to all for a prosperous New Year.

If you would like to try croquet, our summer hours are 9.15 am on Tuesdays for 'association croquet' and the same time on Fridays for 'golf croquet'.

We provide all the equipment and a period of coaching before you need to commit to joining the club. Casual players are welcome to come along for a payment of \$5 per day. If you would like to join us, contact Lyn on 027- 4662661 for more information.

The club is situated in Woollams Ave next to the Bowling Club



The fairest fare by far

For a professional & friendly everyday taxi service & more!

Ph: 027 376 4466

Email: corotaxis3506@gmail.com

www.corotaxi.co.nz

Coromandel to Thames Connector Shuttle MONDAY TO FRIDAY

8am – depart Coromandel

9.10am – arrive Thames

11.15am – depart Thames

NEW PRICES FROM 1 OCTOBER:

\$20 one way or \$25 for the round trip.

Click & collect \$14

Bookings essential.

Classifieds

Classifieds cost 30 cents per word – please email your words to corochronicle@gmail.com or call/text Debbie on 021 235 6648.

PROFESSIONALS

A COROMANDEL PLASTERER. For new homes and all renovation requirements I offer 25+ years' experience for a professional plastering finish. Doug Marsters 022 019 9255.

ABBY'S HEALING HAVEN 021 352 486. Chakra and energy clearing, crystal calibration 90 minutes - \$140, appointments via video link or in person. Organic Ayurvedic facial massage, 30 min - \$55. Breakthrough Tapping session, 60 min - \$100, an effective self mastery method for dealing with all stress and anxiety also self sabotaging behaviors. Online or in person. Intuitive Tarot and oracle reading, 45 minutes - \$60. See more at www.abbyshealinghaven.com.

ALUMINIUM JOINERY

MAINTENANCE Locks, handles, hinges, wheels. Call or text Mike, Coromandel Glass 027 661 0190.

BALLET CLASS Silver Swans for Adults. Venue: Coromandel Citizens' Hall, Wednesdays, 10am to 11.15am. \$15. Phone Marilyn Swan 027 336 5263. Royal Academy of Dance - Life Registered Teacher. Silver Swans licensee. Visitors are welcome.

BLINDS, CURTAINS, SCREENS, AWNINGS & SHUTTERS. Please phone or email Whitianga Flooring Xtra for your free in-home consultation (07)8662836 or sales.whitianga@flooringxtra.co.nz

BRICK AND BLOCK LAYER. Laurie Gordge (07) 866 8200, 027 494 9573, buddy10@xtra.co.nz.

BRICK AND BLOCK LAYING SPECIALISTS. L.B.P. Phone Joel 021 0234 0210.

CARPENTER WANTING WORK. Alterations, new houses, additions, no job too small, licensed building practitioner. Ph 021 675 575.

COROMANDEL GARAGE DOORS. Ph: Gerry Packo 022 453 2188. New installs, new motors, new remotes, door servicing, new parts, we do it all. E: corogaragedoors@gmail.com; W: www.corogaragedoors.co.nz.

COROMANDEL HONEY LTD. Local beekeepers. Honey for sale and manuka sites wanted. Call Evan on 021 533 826.

COROMANDEL STUMP

GRINDING. Local operator based in CoroTown. Contact now 027 451 2224 or email dynamictreecare@gmail.com.

FLOOR SANDING & SOLID TIMBER FLOORING INSTALLATION. Please phone or email Whitianga Flooring Xtra for your free measure & quote (07)8662836 or sales.whitianga@flooringxtra.co.nz

GAIA DECORATORS LTD Your complete Interior / Exterior Painting and Decorating Service. Providers of Natural Paints since 2010. Low Odour No Chemicals No Vocs. The Professional Service For Every Building. Ph Mark for your free quote 07 866 8157 / 021 295 5532.

GENERAL HOUSE & PROPERTY MAINTENANCE & HANDYMAN SERVICES. Phone Mike 027 240 9084. Coromandel and surrounding areas.

GIB STOPPER – Richard Field. Local and coastal. Ph 029 778 8645.

GIB STOPPER/PAINTER. Alpha Drywall, Geoff, local 022 027 0290.

GLASS REPAIR Call or text Mike Coromandel Glass 027 661 0190.

HEAT PUMPS. Sales and installation of Mitsubishi and Fujitsu heat pump/ air conditioning. Based in Kuaotunu. Call Bill for a free no obligation quote 027 271 4803. www.dynamicelectrical-whitianga.co.nz. Warm or cool a medium sized bedroom with a Mitsubishi heat pump. Starting at \$2000 installed.

HOUSEKEEPING SERVICES: cooking, cleaning, ironing 027 738 1450.

NEED SUPPORT AT HOME? My name is Maria and I am an ex registered nurse and I live in Coromandel, Monday-Friday. I'm a kind, helpful and mentally strong person who can do personal care and support work for people in their home. Daytime and/or nighttime. Maria Utting: mariautting@gmail.com 021 677 239.

POOL QUEEN LTD. Mobile Pool and Spa Cleaning Service 027 316 3384.

PROFESSIONAL PAINTING AT FAIR LOCAL RATES. Interior and exterior work done with care, clarity and respect for your space. Free quotes. Call Thomas 028 400 4120.

RIDE-ON MOWERS. Repairs and servicing at Papa Aroha. Pickup and delivery can be arranged. Ph Mike 027 223 7919.

ROOF KING LTD. New roofs, re-roofs, leaks, spouting, downpipes, and general maintenance. Ph Eli 021 160 6790.

SOLAR SYSTEM DESIGN AND INSTALL. Good Energy your local solar specialists based in Whitianga. Ph Simon 021 242 3394.

TILE INSTALLATION. Please phone or email Whitianga Flooring Xtra for your free measure & quote for all your tile supply & installation needs (07)8662836 or sales.whitianga@flooringxtra.co.nz

VINYL LAYING. Best price 027 350 9242.

WEBSITEGUY – STEPHEN HUTTON – for new websites, updates, hosting and domain names. Call: 027 585 3311. Email: steve@websiteguy.co.nz; Web: websiteguy.co.nz

FOR RENT

AIRBNB HOLIDAY ACCOMMODATION available at Abby's Healing Haven, sleeps five in a separate three-bedroom house, walking distance to Coromandel Town, private, charming cottage with everything provided and a new spa bath on the back deck. Details, photos and AirBnB booking link on www.abbyshealinghaven.com

BOAT HIRAGE 5m Ramco Getaway. Suitable 2 persons. Day skippers certificate required. Enquire for further details. Mark 021 295 5532.

FOR SALE

COROMANDEL FLOWERS. For all of your fresh flower needs contact Elisabeth 021 211 9556.

FIREWOOD DRY! Delivered Coromandel Town and surrounding areas, good rates, phone/text 022 635 2841.

FIREWOOD FOR SALE, stored outside wood is Poplar, \$85 per metre cubed, buyer to collect. Contact Sharon 0278211989.

Griselinia Hedge plants for sale, various sizes. Phone Ed 027 623 6205.

WANTED

SUPPORT NEEDED for a solo mum and her children just moved into an empty rental. If anyone has any of the following that they are willing to give to help this family it would be so appreciated. Table and chairs, kitchen utensils, shelves, pantry cupboard, cooking pots, Queen and 2 single duvets and any other home making things to make a house comfy. Please ring Rachel on 022 410 7227.

VEHICLES WANTED Dead or Alive. Cars, vans, utes, Trucks. Call 0800 333 398 or text 021 344 449.

WORK WANTED

ARBORIST - Professional, Equipped & Insured for quality tree work. Dynamic Tree Care 027 451 2224.

TREE SERVICE. Dismantling or pruning. Free quotes. Call Jeremy Haszard 027 421 0603.

OTHER

AGE CONCERN Falls Prevention Strength and Balance exercise class for seniors. Coromandel Gym, Pottery Lane Tuesday and Thursday, 10am, \$2. Vickie (07) 866 7894.

PINK DRINKS two hour bi-monthly lesbian and gay social gatherings. For further information phone Jules 027 392 3221.

Coromandel Town weekly and monthly meetings

Every Monday

Step Aerobics at Coro Gym.....	8am
Coromandel Hikers' Group, Hauraki House, Murray Brown (07) 866 8602.....	9am
Monday Walkers, Woollams Ave car park north end, Tracy and Peter Kendall 027 333 4722	9am
Gold Fit at Coro Gym.....	9.30am
Rummikub at The Club.....	1-4pm
Line dancing, Anglican Church Hall, Jeni Mudgway 021 022 75341	3-4.30pm
Coro Superstars, a performing arts group for 6-13-yr-olds, Anglican Hall, contact Claire 021 653 650	5pm
Bridge, St John rooms.....	7pm

Every Tuesday

Coro Walking Group, meet outside The Bizarre, Ruth 027 338 3545	8.30am
Croquet Club – Association Croquet, Woollams Ave, Lyn 027 466 2661 (winter hours)	9.45-12.15am
Age Concern seniors' exercise class, Coromandel Gym. \$3 Vickie 027 417 7077	10am
Yoga for everyone, Colville Hall, Kate 021 125 3152	10am
Playcentre, Woollams Ave.....	10.30am-1pm
Na Ihowa Ahau after-school kids club (term time only), Anglican Hall, Anita 027 259 1085	3.15-4.45pm
Tai Chi, Waikato Events Centre (above the swimming pool), Christina 021 113 4768	5-6.15pm

Every Wednesday

Step Aerobics at Coro Gym.....	8am
Pastel Artists Coromandel, Rose's Studio, contact Allan (07) 866 8053.....	9am-12pm
Gold Fit at Coro Gym.....	9.30am
Ballet Class For Adults, Coromandel Citizens' Hall, \$15 per class. Marilyn 027 336 5263.....	10-11am
Coromandel Home-school group, Julene 020 4060 8102	12.30pm
Kung Fu, Coromandel Hospital.....	5-7pm

Every Thursday

Coro Art Group, Coro Flying Club, Lindsay (07) 866 7799.....	9am-12pm
Age Concern seniors' exercise class, Coromandel Gym. \$3 Vickie 027 417 7077.....	10am
Free Guided Meditation, Havalona Pyramid	10-11am
Movement for Equanimity (MFE), a well-being fascia movement class, contact Judy 021 0200 7550	3-4pm
Line dancing, Anglican Church Hall, Jeni Mudgway 021 022 75341	3-4.30pm
Coromandel Tennis Club "club day"	4.30pm
Yin Yoga with Toni, Event Centre, \$10-\$20, limited spaces please txt to book a space, Toni 020 4076 1526	5.30pm
Coromandel Pickleball, term time, Coromandel Area School gym.	6-8pm
Coromandel Narcotics Anonymous 12 step addiction recovery meeting, at 100 Pound St (orange house). Contact Rosie 027 577 7716.....	6.30-7.30pm
Free drop-in Dharma talk or video at Mahamudra	7-8.30pm

Every Friday

Step Aerobics at Coro Gym.....	8am
Community Gardens volunteer day.....	9am-12pm
Yoga for everyone, Anglican Hall, Kate 021 125 3152.....	9am
Croquet Club – Golf Croquet, Woollams Ave, Lyn 027 466 2661 (winter hours).....	9.45-12.15am
Chess Club, Weta Cafe, Mike 027 304 9252	9.30am
Playcentre, Woollams Ave.....	9.45am-12.15pm
Coromandel Bowling Club social evening at the Club	3.30-7pm
Coromandel Flying Club social gathering, all welcome	5.30pm

Every Saturday

Coromandel Homegrown Market, Anglican Church Hall, 1170 Tiki Rd....	9am-1pm
RSA Coromandel, RSA Club Rooms Woollams Ave. President Gary Pettett 021 061 0852	3.30-7pm

Every Sunday

Anglican Church Service	10am
Coromandel Tennis Club "club day"	2pm

Monthly

1st Mon – Coro Patchwork & Quilters, St John rooms,
Michaela Green 021 0287 1879 9.30am-3.30pm

3rd Mon – Coro Patchwork & Quilters, St John rooms,
Michaela Green 021 0287 1879 9.30am-3.30pm

2nd Tues – Cancer Support Group, St John rooms
John Walker 027 482 0435 10am

1st Wed – Coro Embroiderers' Guild, St John rooms,
Helen Pearce (07) 866 8460. 10am-3pm

1st Wed – Lions dinner meeting (winter time), St John rooms.

Sue Hughes 021 142 1124 6pm

1st & 3rd Wed – Car Club meeting at Club Rooms, Woollams Ave,
Bruce 027 249 0878 4pm

2nd Wed – Garden Circle. Jeni Mudgway 021 0227 5341 1pm

3rd Wed – Lions business meeting (winter time), St John rooms.
Sue Hughes 021 142 1124 6pm

Last Wed – Coromandel-Colville Business Association networking meeting,
Combined Clubs, Woollams Avenue, everyone welcome (Feb-Nov)..... 5pm

Last Thurs – Green Drinks at Star & Garter 5pm

3rd Fri – Dances of Universal Peace, The Pyramid,
Sue 022 159 1571 10.30am

Last Friday – Quiz night at the Club,
from Friday 26 September until next April 7-9pm

1st & 3rd Sun – Church Service at St Andrew's Church,
Rings Road 10am

If your meeting has been omitted, please email Debbie at
corochronicle@gmail.com with the subject "meeting" or
txt/ph 021 235 6648. Please include contact name and phone number.

Advertisers' directory

Company	Page
Ann Kerr-Bell – Natural Medical Centre	18
Cape Civil	21
Coro Cowboys	5
Coro Gym	2
Coromandel Concrete and Landscape Services	8
Coromandel Marine Farmers' Association	6
Coromandel Oyster Company	19
Coromandel Plumbing (1986) Ltd	4
Coromandel Taxi	28
Driving Creek Railway & Potteries	26
Dynamic Tree Care	4
Fairview Thames	18
Fish, Dive, Hunt	12
Four Square Coromandel	20
Frogs Lily Pad Construction	3
Gaia Decorators	2
GD Haulage	24
Good Energy	16
Guthrie Bowron	21
Harcourts	17
Hauraki Taxation Service Ltd	12
HD Diggers	27
Himalaya Shop – Roah Design	20
ITM	14
(James and Turner	12
James Drainage '97 Ltd	24
Johnston Fencing	10
Llandem Consulting Engineers Ltd	16
Mana	23
Matt Hobbs Plumbing & Drainlaying Ltd	7
Michael Wood Builders Ltd	22
Parr Builders	14
Peninsula Electrical Services Ltd	27
Peninsula Pest Services	20
Peter Grunwald	23
Purnell Lawyers	8
Rainman	8
Revell Architectural Design	4
Richardsons Real Estate	9
Ruamahunga Bay Joinery	15
Scott Simpson MP	22
Star & Garter	10
TCDC	13
The Waterworks	11
Trinity Network	31
Twentymans	25
Waitaia Nursery	25
Whitianga Flooring Xtra	7



New Listing

Enquiries Over \$1,050,000

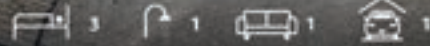


Coromandel 986 Tuatewa Road
<https://www.trinityrealestate.co.nz/property/986-tuatewa-road-coromandel/>



New Listing

Asking Price \$679,000

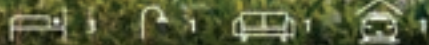


Coromandel 12 Whangapoua Road
<https://www.trinityrealestate.co.nz/property/12-whangapoua-road-coromandel/>



New Listing

Enquiries Over \$530,000



Coromandel 1125 Rings Road
<https://www.trinityrealestate.co.nz/property/1125-rings-road-coromandel/>



New Listing

Asking Price \$880,000



Coromandel 1451 Port Charles Road + 7 Adlor Hill
<https://www.trinityrealestate.co.nz/property/1451-port-charles-road-coromandel/>



New Listing

Enquiries Over \$695,000



Coromandel 11 Kowhai Place
<https://www.trinityrealestate.co.nz/property/11-kowhai-place-coromandel/>



Priced for Summer

Asking Price \$595,000

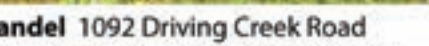


Coromandel 2065 Rings Road
<https://www.trinityrealestate.co.nz/property/2065-rings-road-coromandel/>



New Listing

Enquiries Over \$350,000

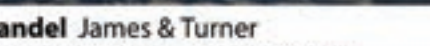


Coromandel 1092 Driving Creek Road
<https://www.trinityrealestate.co.nz/property/1092-driving-creek-road-coromandel/>



Business

Asking Price \$320,000



Coromandel James & Turner
<https://www.trinityrealestate.co.nz/property/1435-kapeke-rd-coromandel/>

More listings on our website or call into our office at 65 Wharf Road (opposite 4 Square)

Contact us on 07 866 7313

"WE VALUE PEOPLE, NOT JUST TRANSACTIONS".

Contact us for a free confidential appraisal and we can discuss our very competitive commission rates.

We are open 7 days a week, call in anytime.

The Trinity Team would like to thank everyone for their awesome support this year. We would like to wish everyone a Merry Christmas and Happy New Year.

Rob, Annette & Becks



Calendar of events

Coromandel Town December 2025

**COROMANDEL
RUBBISH AND RECYCLING
TRANSFER STATION**
Daily 8.30am-5.30pm
(summer hours) closed only on
Christmas Day and New Year's Day

MON	TUE	WED	THU	FRI	SAT	SUN
1 High tide 3.44am (2.4m), 4.14pm (2.6m) Low tide 9.58am (0.5m), 10.30pm (0.3m)	2	3 Open Optional Triples Tournament at Coromandel Bowling Club (see pg 4) 5 day kuirnuki carrying course starts at Driving Creek Potteries (see ad pg 26) 	4	5 Meet Andy Reid, the author of "Are you trying to kill us?" at Coromandel Bike Park (see pg 22) Bowling Club Christmas Party (see pg 4) 	6 High tide 8.37am (3.1m), 9pm (2.9m) Low tide 2.15am (-0.2m), 2.43pm (0.1m)	7 The Waterworks Summer Kick Off (see ad pg 11) Coromandel Car Club Sunday run (see pg 11)
8 High tide 10.21am (3.1m), 10.48pm (2.9m) Low tide 3.58am (-0.2m), 4.32pm (0.1m)	9 Coromandel Area School prizegiving at 5.30pm Open Floor Dance with Pippa at Mana (see pg 8 & 23)	10 High tide 12.05pm (2.9m) Low tide 5.40am (0.1m), 6.21pm (0.2m) 	11 High tide 12.38am (2.7m), 12.58pm (2.8m) Low tide 6.32am (0.2m), 7.16pm (0.3m)	12 Summer Working Bee starts at Mana (see pg 23) Coromandel Area School closes at midday for school holidays	13 High tide 2.20am (2.5m), 2.44pm (2.5m) Low tide 8.28am (0.5m), 9.03pm (0.5m)	14 Santa Parade (see pg 5) Coromandel Christmas Art Exhibition opens (see pg 26) Open Floor "Just Dance" with Lisa at Coromandel Citizens Hall (see pg 8)
15 Coromandel Contract Bridge AGM (see pg 19)	16 DEADLINE: Coromandel Town Chronicle January issue	17 High tide 6.04am (2.4m), 6.09pm (2.4m) Low tide 12.05pm (0.6m) 	18 High tide 12.38am (2.7m), 12.58pm (2.8m) Low tide 6.32am (0.2m), 7.16pm (0.3m)	19 Quiz night at The Club (see pg 4) Te Pūtahi Whāiora (CILT) closes for Xmas break (see pg 20)	20 High tide 2.20am (2.5m), 2.44pm (2.5m) Low tide 8.28am (0.5m), 9.03pm (0.5m) 	21 "Christingle Celebration" 10am at Christ Church (see pg 14) Christmas Carol's at Hauraki House Theatre, 5pm (see pg 5)
22 High tide 9.38am (2.7m), 9.48pm (2.5m) Low tide 3.12am (0.3m), 3.36pm (0.5m)	23 High tide 10.14am (2.7m), 10.28pm (2.5m) Low tide 3.50am (0.3m), 4.18pm (0.4m)	24 Rubbish to be confirmed see todc.govt.nz/bindays Carol's & Holy Communion at Christ Church (see pg 14)	25 Christmas Day Christmas Morning Celebration at Christ Church (see pg 14) Coromandel Town Community Christmas Lunch (see pg 3)	26 Boxing Day High tide 12.18pm (2.7m) Low tide 5.50am (0.3m), 6.28pm (0.4m)	27 High tide 12.34am (2.5m), 1.04pm (2.7m) Low tide 6.36am (0.4m), 7.15pm (0.4m)	28 High tide 1.22am (2.5m), 1.53pm (2.6m) Low tide 7.27am (0.4m), 8.05pm (0.3m)
29 High tide 2.15am (2.5m), 2.46pm (2.6m) Low tide 8.25am (0.5m), 9pm (0.3m)	30 High tide 3.15am (2.5m), 3.43pm (2.6m) Low tide 9.28am (0.5m), 9.59pm (0.3m)	31 Rubbish to be confirmed see todc.govt.nz/bindays New Years Eve Open Floor Dance with Lisa at Mana Retreat (see pg 8 & 23) High tide 4.20am (2.6m), 4.43pm (2.6m) Low tide 10.32am (0.5m), 11.01pm (0.2m)	Make sure your event gets listed To get your event listed, email the details to Debbie at corochronicle@gmail.com with the subject "event". Published subject to space availability, with preference to not-for-profit groups. Regular meetings aren't included here – please see weekly and monthly meetings on page 30.			

KEY
 New moon
 Full moon

Tide times and heights from Land Information NZ and are for Coromandel Harbour.
For Thames times - 15min High and -15min Low.

Rubbish and recycling collection for Coromandel Town (CT), Te Kōhuna (TK), Mania (MN),
Coromandel Rural North (RN), and Thames Coast (TC)

Put red lid rubbish bin
and food scrap bin out
Put recycling bin (plastic 1, 2 & 5
tins, paper, card), glass recycling bin
and food scrap bin out