

January 2015
Volume 19 Issue 1

Coromandel Town Chronicle

Founded and owned by the Coromandel Town Business Association since 1996

FREE
Community Magazine

Ode to New Chum – winning poem

PAGE 3

Santa Parade winners PG 3



On the train PG 27



Summer music PG 28



Welcome to the Coromandel Town Chronicle

Cover picture:

New Chum Beach. Photo by
Dmitri Kotelevsk and provided by
Preserve New Chum For Everyone

The *Coromandel Town Chronicle*
is published by Jude Publishing Ltd
on behalf of the Coromandel Town
Business Association. It is delivered
free to the Coromandel area.

Jude Publishing Ltd
PO Box 148, Coromandel 3543
www.coromandeltownchronicle.co.nz

If you have any news stories that you'd
like included please email
corochronicle@gmail.com.
If you are not sure how to put an article
together for publication then find tips
and advice on the website:
[www.coromandeltownchronicle.co.nz/
html/guidelines.html](http://www.coromandeltownchronicle.co.nz/html/guidelines.html)

For advertising please email Debbie on
corochronicle@gmail.com
or phone (07) 866 7119 or 021 235 6648

The Coromandel Town Chronicle
is printed with vegetable oil based
inks by Print House Ltd, Hamilton.
An accredited FSC and PEFC printer.
Enviromark Bronze certified.

Coromandel Town Business
Association's Mission Statement:
To support business, partnering with
our community board, to strengthen
and encourage the development of
Coromandel Town and environs.

Want to support the CTC?
Live out of town? You need an
annual subscription.

Only \$38 (incl. GST) NZ postage only.
See contact details above.

Deadline for the
next issue is 4pm
Monday 12 January

Disclaimer: The publisher and its editors
of the *Coromandel Town Chronicle* shall
not be responsible in any way for opinions
expressed in letters and articles contained
in the *Coromandel Town Chronicle* or for
loss or damage suffered by anyone in
reliance upon the information contained
therein. Further, no endorsement of any
product or service featured or advertised in
the *Coromandel Town Chronicle* should be
implied or assumed.

Coromandel Town Business Association
Disclaimer: The opinions of the editor do
not necessarily reflect the opinion of the
Coromandel Town Business Association.
The Chronicle should be representing all
parties and showing a cross section of
feedback from the community and we
believe this to be the case. The editor of
any publication is entitled to a personal
opinion and provided this is identified as
such then this is acceptable to us.

ISSN 1178-721X (Print)
ISSN 1179-4895 (Online)

Editor's comments

As I write this, just before sending
to print we have just had a big
storm, fruit has come off trees
prematurely, the garden is looking a
mess, and the trampoline ended up
on the shed roof, and all this just as
the school summer holidays start!

I hope we get our summer back
before you read this in time for
Christmas and the new year.

I hope you have a great New
Year. There are lots on with events
throughout January. There is the
MEG summer programme, and
youth group for the children, so lots
to do. Check out the
back cover calendar and
get out and enjoy.

Happy New Year to
you all.

Debbie

Letters

Dear Editor,
Has Xmas gone out of
Coromandel town? What's
happened to all the Xmas
Spirit here? There is nothing
to say it's even Xmas. No
bunting, no decorations,
except some red ribbons
tied around posts and
trees (some of which have
already been stolen). We
used to have bunting on
the streets and lights on the
trees. Come on Coro town,
keep the Xmas Spirit alive.
How's Santa going to find
our little town?

It was a lovely Santa
Parade this year though.
Lovely to see the kids
enjoying themselves. It
would be nice to have some
Christmas music as part of
the parade too.
Glenys Fitzpatrick,
Te Kouma

Send letters to the *Coromandel Town Chronicle*, PO Box 148, Coromandel 3543 or
email to corochronicle@gmail.com. Contributions should be kept short, and should
not exceed 350 words. They must include name, address and telephone number. The
editor reserves the right to reject letters or edit them for clarity and space.

**Poetry
SPOT****Looking ahead**

By Jocelyn Davey

The month of December for children crawls
As Santa does his present hauls.
In Christmas week excitement mounts
When Santa does his Christmas rounds.

Then it's over for another year
And life returns normally.
But on New Year's Eve, toss the old year out
And welcome the New Year formally.

Janus is the god of doors and gates
And names January, too.
George 6 said Janus was the gate of the year
A worthwhile thing to do.

Happy New Year... 2015

Santa Parade 2014



Dear Debbie,
Happy New Year All. As we are now into 2015 I thought you
may like to make note in your new diaries or calendars to
keep **Friday 6 March** free. This is the date when we celebrate
International Women's Day with our annual Cancer Charity
Champagne Breakfast at the Pepper Tree. Tickets will go on sale
from Richardson's on 1 February.
Kind regards,
Robyn Dudson, Coromandel

Summer in Sandy Bay



Poem's a winner

Congratulations to Briar O'Keefe of Te Rerenga School, who recently won a poetry competition about saving New Chum Beach. First prize was sharing a meal at Luke's Kitchen with Phil Keoghan of "The Amazing Race". The competition was organised by the group "Preserve New Chum For Everyone".

Te Rerenga School children have also produced a video on the beach which can be found at www.youtube.com/watch?v=oxkNm5qX3Uc.



Briar O'Keefe

New Chum Beach

By Briar O'Keefe

A slow gentle breeze
flows through the trees
as I walk over the track
with a pack on my back.
I get to the beach, my feet touch the sand
I think to myself, what a wonderful land.
I jump in the ocean, with a whole lot of joy,
I look out and see a lonely old buoy.
I sit down and listen to the fantails sing
When I sit on the sand, I feel like a king.
Beautiful New Chum will never fade away,
I hope it will stay as a famous young bay!

Poetry
SPOT



1st place - Mountain View B&B



2nd place - Garden Circle



3rd place - Richardsons Real Estate

Coromandel Lions Club

By Lion Lyn

Happy New Year! Where did 2014 go? Fast is the correct answer. We kick off the new year with the Keltic Fair on **2 January** with mussel fritters, sausage sizzle and cold drinks for sale on our usual spot on the bottom field in the school grounds. This is still our main fundraiser and we can't do it without local support, so see you all there! Last year we gave out over \$10,000 to mostly local projects. This does not include specific events such as the two projects held on Labour weekend. All in all, that is a lot of mussel fritters (and alot of fun)!

Our Xmas dinner was a little quieter this year as we remembered Lion Ken who passed away the previous week. Heartfelt condolences to Thelma and family. R.I.P. Ken, we will miss you greatly.

This year's Xmas Parade was awesome. The judging of the entrants was exceptionally high, which made the judging very difficult. A huge thank you to all who helped in creating a memorable day for young and old! Special thanks to Coromandel Business Association for sponsorship of 1st prize \$200, Coro Stoppers and Dave King Electrical for 2nd prize \$100, and Coro Supermarket for 3rd \$50. Thanks to Alan James and Lions' members for traffic control; Fire Brigade for use of vintage fire truck; Liz for donating goodies for lolly scramble; Nigel for use of generator to blow up bouncy castle; Twisty Twins for being a beautiful addition to the day; Papakura Hot Rods for donating their time to come all the way here to enhance our day; and lastly to have our emergency services so close at hand for much of the day, thanks to St John, Fire Brigade, and Police. As volunteers we appreciate your valuable time. Unfortunately the Model A club had last minute problems but maybe we will see them next year. A great community effort made a great family day out! Thanks to everyone for being a part of it.

Reminder that Lions do not meet during January, but we will still be out and about doing projects or firewood during this time. Feel free to join us! See you at the Keltic Fair. Have a safe and happy New Year.

Events

January

– see back page.

February

Saturday 7 February – Coromandel Mussel Festival (see ad pg 23).

Monday 9 February – Learn-to-Swim classes start (see pg 32).

Saturday 14 February – Vegetable & Produce Show (see pg 33).

Saturday 21 February – Colville Connection mountain bike race.

March

Friday 6 March – International Women's Day Champagne Breakfast at Pepper Tree (see pg 2).

Saturday 7 March – Classy Chicks Ladies Fishing Competition (see pg 32).

Saturday 14 to Sunday 15 March – ARC Adventure Race 24/12/8hr.

April

11,12,18,19 April – Coromandel Arts Tour.



Opening days and hours:
From 27th December
we are open 7 days 9am-9pm.
Closed from 3pm
on New Year's Eve.

Castle Rock Cafe
SH25 Te Rerenga Phone: 07 866 4542

Coromandel Town Information Centre

By Sandra Wilson

Happy New Year to everyone

What a year it has been! Up to 30 November 2014 we have had 25,977 people through our centre. This includes not only tourists, but our local community as well.

Since Labour Weekend we have been busy. Good practice for the summertime and long may it continue. Our town has so much to offer to those visiting.

Unfortunately, due to financial constraints, Coromandel Area School had to withdraw its support for providing free Wifi at the centre. With the purchase of a cuppa, however, you can access Wifi at Umu Café, Chai Tea House and Driving Creek Café. Internet is available at the Star and Garter Hotel and Coromandel Superette and Stationers for a charge. Local residents can also access internet services through CILT.

We now have a new town map at the centre. So much time was taken to make sure it met everyone's needs, both for tourists and our local community. A special thanks to Debbie and Natalie. Their patience and perseverance paid off.

Our new Information Assistant, Jeanette Bailey, started on 15 December. This is a temporary position to assist over the busy season from December 2014 through March 2015.

I would like to take the opportunity to acknowledge and thank Alastair, Barbara, Graeme, Jane, Jeanette, Malcolm, Natalie, Ray, and Susan, plus our newest volunteers Asuka, Con, Lyn, and Margaret, for their hard work and dedicated support over the past year. Some have been around since the Information Centre moved to the Samuel James Reserve two years ago, so thank you again for your commitment and dedication. You all bring a special something that enhances the culture of our centre.

This is a great time to make the most of the beautiful weather and reacquaint yourself with what our amazing town and area have to offer.

Take a stroll around town and look at our historic buildings and places; see the stunning views from the top of the Kauri Block; enjoy the beautiful bush walk at Long Bay; and visit the Kauri Grove and Waiiau Fall on the 309.

Have you been up behind the Stamper Battery to visit Drinkwater Reserve and to the lookout over town? Or tried your luck at panning for gold in the stream? Local maps are available for free; we also sell DOC walking guides for \$2 and TCDC's Coromandel Local Walks Guide for \$5.



Other ideas... Go swimming or kayaking at Long Bay, Wyuna Bay, Te Kouma Bay or go further north to Oamaru Bay, Papa Aroha, Amodeo Bay and more. When was the last time you went out to collect pipis and cockles? It's a fun way to fill in a few hours and then enjoy the benefits of your labour. But remember there are limits to the shellfish you can harvest: cockles 60, pipis 50, per person.

Enjoy, have fun, and be safe in and around the water.

Coromandel Town Information Centre is open 10am-4pm Sunday to Thursday, and to 5pm Friday/Saturday www.coromandeltown.co.nz. Facebook search Coromandel town



Grey Power Coromandel Inc.

By Dolly Welch

There's nothing as joyful as singing Christmas carols and that was exactly what the seniors of Coromandel gathered for at the Anglican Church Hall on Friday 5 December. A great turnout on the day, a Christmas party with food, entertainment, laughter and sharing. What more would you ask for at this time of year? To top it off, everyone received a Christmas gift.

A group of children from the Coromandel Community Preschool again didn't disappoint us with their classic song and dance routines. We look forward each year to seeing the children show their talent and individual character. They are a hard act to follow. We enjoyed a special appearance by the Golden Girl Singers from Mercury Bay. They are a group of eleven singers and their pianist. They showed their talent with a range of songs from various eras and their versions of Christmas carols, My favourite was "New Zealand Christmas". We were over the moon to have such a group entertain us. Ukemania (Coromandel) strummed out several favourite tunes with the audience singing along, clapping, knee slapping with some getting up to dance and jig. Oh gosh what fun we had. To settle things down, poems and readings were offered by Irene and Claire. We thank all of you for your participation and sharing.

This annual Christmas party was organised by Grey Power Coromandel Association committee, an event that is growing each year. We acknowledge our sponsor Coromandel Senior Settlement Trust. We again thank our committee, Coromandel Music Society and all those who helped make this day. Let's look forward to the next one. Merry Christmas and a Happy New Year.



Chartered Accountants The Hauraki Taxation Service Limited

The only full-time Accountants in Coromandel Town.

Sue, Sue and Ann look forward to assisting you with your accounting and taxation needs.

Open Monday-Friday 9am-4pm

COROMANDEL 07 866 8660 THAMES 07 868 9710

Coromandel Boat Hire

COROMANDEL TOWN

Boat Hire, 2 x FC430 with 40hp Yamaha outboards, live bait tank, 4 people max. Launch and retrieve if needed.



Ph 07 866 8234

Mob 027 2976 299

Holiday Houses ID #9998 Bookabach ID #18733

WANT NATIVE NURSERY & EDIBLES WAITAIA RD, KUAOTUNU

A wide range of beautiful natives, palms and fruit trees.

Potting mix, compost, mulch, chook manure.

Open Thursday- Sunday 9- 5, everyday of school & public holidays, and also by phone appointment

Please phone Claire & Colin Hill 07 869 5910

Our Coromandel

News from Thames-Coromandel District Council



JANUARY, 2015

FREEDOM CAMPING BYLAW IN PLACE

We welcome responsible freedom camping. But make sure you know the rules and read the signage to avoid a \$200 fine. Only certified self-contained freedom camping is permitted. There are a number of commercial or DOC campsites where you can camp just go to www.tcdc.govt.nz/camping



There are some areas on our Council land that are either prohibited to all freedom camping, or restricted with

conditions. All prohibited and restricted areas are clearly sign-posted.

You can also use this QR code with your mobile phone. It will take you to our camping page on our website.



To find out all the prohibited and restricted areas go to www.tcdc.govt.nz/camping

Escape to the Coromandel Visitor Camping Packs

Purchase your goodie bag with everything you need to know about camping on the Coromandel. \$15 from Council offices, libraries, i-sites and information centres.



Sugarloaf Grid Bookings

ALL bookings for use of the Sugarloaf Grid should be made with Bill McFarlane, Sugarloaf Warden: 027 618 8717

Fees are payable directly to the Warden, or can be invoiced on request by providing mailing details when booking the facility.

The cost for use of the Grid as detailed in Council's Annual Plan is: \$65 per berth/per day.

It is important that bookings are made so that there are no clashes of use for all harbour users.

Dog control

Summer restrictions are in place for exercising your dog on beaches and Council reserves. To get the list of all the areas and restrictions go to www.tcdc.govt.nz/dogs

Your Coromandel-Colville Community Board



John Walker
Chairperson
027 482 0435



Keith Stephenson
a.rc@xtra.co.nz
07 866 8613



Kim Brett
k-n-k@xtra.co.nz
07 866 7242



Tony Brljevic
Councillor
07 866 7731



Jane Warren
07 866 8927

FIRE BAN

From Monday 20 October 2014 fire permits will be issued with a maximum duration of 14 days (2 weeks). A Total Fire Ban starts on 20 December 2014 through to 8 February 2015. This means no permits will be issued during this time -and this period could be extended depending on weather. We will also be monitoring our Daily Fire Indices around the Coromandel.

www.tcdc.govt.nz/fire

Kerbside collections – Colville-Coromandel

Coromandel rural north

Starting 26 December - 31 January (weekly)

- Tuesday – blue bag, black bin and green crate.
- Fridays – blue bag and green crate.

Coromandel Town and Te Kouma

- Wednesdays – blue bag, black bin and green crate.

Coromandel RTS Opening Hours

Peak Season

(23 December to end of summer)

525 Hauraki Road, Coromandel

Phone: +64 7 866 7616

Monday	12:30 to 17:30
Tuesday	12:30 to 17:30
Wednesday	12:30 to 17:30
Thursday	12:30 to 17:30
Friday	12:30 to 17:30
Saturday	10:30 to 17:30
Sunday	10:30 to 19:30



www.tcdc.govt.nz/kerbside

Out now

at Council
offices, i-Sites
and District
Libraries.



Or read online at
tcdc.govt.nz/summertimes



Follow us on Twitter!
twitter.com/ourcoromandel



[www.facebook.com/
ThamesCoromandelDistrictCouncil](https://www.facebook.com/ThamesCoromandelDistrictCouncil)

www.coromandel.govt.nz

customer.services@tcdc.govt.nz

Private Bag, 515 Mackay St, Thames

Phone: 07 868 0200

Library News

By Raewyn McKinney

Last month I introduced the volunteer librarians. At that time we had two people still being trained, but it is pleasing to be able to report that they will now be taking their turns in the library over the summer.

Our new Friday afternoon librarian is another Raewyn, and she will alternate weeks with Kay, to replace Jenny.

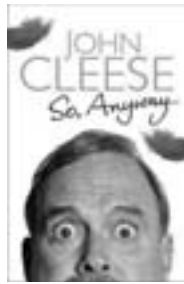
Our other new volunteer is Barbara. At present Barbara will be joining the relief team, but we already know that she will be kept pretty busy as several volunteers have trips planned during 2015.

The last member of the team is Stuart. Stuart is the man who organizes the donated books, and organizes our book sales. Sales of donated and withdrawn books raise enough money each year to pay the annual insurance costs of the museum, so they are most important. We therefore thank everyone who donates books to the museum, and Stuart for his work in running the sales.

The next book sale is to be held on **Saturday 27 December** from 10am.

New purchases arriving in the library in time for the holidays include the latest releases from many popular authors such as Martina Cole, Nora Roberts, Di Morrissey, James Patterson, Andy McNab and Michael Connelly.

Other new titles of note are:



time to time with John Cleese's thoughts on topics as diverse as the nature of comedy, the relative merits of cricket and more.



at the heart of "the Dark Web" – a parallel universe of porn, guns, assassins and drugs. Lots of drugs.

Sol3 Mio: Our Story by Moses Mackay, Amitai Pati and Pene Pati with Donna Fleming – Sol3 Mio are Kiwi stars on a meteoric rise. The award-winning operatic

So Anyway by John Cleese – Candid and brilliantly funny, this is the story of how a tall, shy youth... went on to become a self-confessed legend... on to his dizzying ascent via scriptwriting... to the heights of Monty Python. Punctuated from

Silk Road by Eileen Ormsby – It was the "eBay of drugs", a multi-billion dollar empire. And behind its heart of darkness was the FBI's Most Wanted Man, a mysterious crime czar dubbed "Dread Pirate Roberts". SILKROAD.COM lay

trio... stormed the New Zealand popular music charts... Almost out



of nowhere, their success has been rapid and undeniable. But it wasn't always easy. *Sol3 Mio: Our Story* .. is a book of rare charm – a biography that portrays a genuinely engrossing story of heart, humour.



her encounters with the many and the varied local characters of Golden Bay.



relatives, this memoir is engrossing, entertaining and moving... a vital record of what it means to grow up Maori.

The committee of the Coromandel Library wishes everyone a happy and safe Festive Season.

During the holiday period the library will be shut on public holidays. The last day of regular hours will be Wednesday 24 December, and then we will be closed until Monday 5 January, apart from the morning of Tuesday 30 December and Wednesday 31 December. Normal library hours are 10am to 1pm on Monday, Tuesday and Thursday; 10am to 4pm on Wednesday and Friday; and 10am to 12 noon Saturday

JAMES & TURNER 2014 LTD
FISHING • MARINE • TOOLS • SPORTSWEAR
PAINT • HARDWARE • GIFTWARE • GARDENING

OPEN 7 DAYS **GRANT WEBBER**
jandt@vodafone.co.nz
Ph: 07 866 8805 Fax: 07 866 8969
PO Box 16, Coromandel 3543
131 Kapanga Rd Coromandel Town
Like us on Facebook - search "James & Turner"

OPEN FOR SUMMER OPEN FOR SUMMER
FARM SHOP
HEREFORD
'N' A PICKLE
FARM FRESH LOCAL PRODUCE
COLVILLE VILLAGE
MEAT • VEGES • FRUIT
PICKLES • JAM • CHUTNEYS
BAKING • COFFEE • ICECREAM
TXT or CALL Cathy 021 136 8952

HEREFORD
'N' A PICKLE

NATE THE BLACKSMITH
IS BACK IN TOWN
FOR JANUARY!

@DRIVING CREEK RAILWAY

Come up and watch Nate forge and check his work out in the DCR shop.

#handforged
#coat hooks
#fire sets
#bottle openers
#spoons
#candle holders
#chandelier
#gates

Interested in custom work? Visit and have a chat to Nate or send him an email: natetheblacksmith@gmail.com

natetheblacksmith.com

Ken Nummy

On behalf of Thelma Nummy and family we would like to extend our sincere thanks to everyone for their kindness and support at the sad loss of Ken Nummy.

A special thank you to Doctor Kate, district nurses Jane, Jill, and Lee, and the staff at the Colville clinic for your care and compassion; and to Reverend Jan Fogg for your comfort and guidance.

To our very special family friends John and Dianne; our dear friend Ruth; very special neighbours Paul and Daveena, your help, kindness and love will be forever remembered.

All the lovely ladies at the Garden Circle for the wonderful flower tributes and great help.

The walking group for their special visits; they were very much appreciated.

The Lions Club for the support and generosity.

To the Grey Power members, your visits Mac and Dolly, were memorable.

The ukulele group for the very special tribute.

All the people of the Port Charles and Coromandel communities, especially the ladies at the Post Shop, the chemist and the Four Square, sincere thanks to you all.

For the many people that have done so much and not mentioned, we extend a very big thank you to you all.

Thelma Nummy and Family.



Coromandel Embroiderers’ Guild

By Diann Cade

My gosh! A whole New Year to fill. How amazing. There is a lot already on the planner for workshops and petite projects. Have you ever thought of creating some heirloom Christmas decorations, say one a month until Christmas? This year at Guild petite projects will create a set of embroidered Christmas decorations. The number you achieve will be up to you, but there will be the set project each month for inspiration. As usual the petite projects will include various styles of embroidery and stitches so that there is a two-in-one outcome, a decoration and a new technique learnt.

This photo shows a group doing a petite project last year. We often have Guild meetings of 25 to 30 members. So while this group was doing a ribbon embroidered project there was another doing a counted and drawn thread version and the rest of us were doing the project we had in hand. Whatever, we were all enjoying the company and were intent on achieving another treasured item.

For further information about the Coromandel Embroiderers’ Guild contact our President Jill Wilson (07) 866 7484

Coromandel - Auckland Ferry



Departs Auckland Pier 4							
	M	T	W	T	F	S	S
22 Dec - 28 Dec	-	8.45am	8.45am	-	8.45am	8.45am	8.45am
29 Dec - 4 Jan	8.45am	8.45am	8.45am	8.45am	8.45am	8.45am	8.45am
5 Jan - 25 Jan	8.45am	8.45am	8.45am	8.45am	6.00pm	8.45am	8.45am
26 Jan - 1 Feb	8.45am	8.45am	8.45am	8.45am	6.00pm	8.45am	8.45am
Departs Waiheke (Orapiu) to Coromandel (approximate times)							
22 Dec - 28 Dec	-	9.50am	9.50am	-	9.50am	9.50am	9.50am
29 Dec - 4 Jan	9.50am	9.50am	9.50am	9.50am	9.50am	9.50am	9.50am
5 Jan - 25 Jan	9.50am	9.50am	9.50am	9.50am	7.05pm	9.50am	9.50am
26 Jan - 1 Feb	9.50am	9.50am	9.50am	9.50am	7.05pm	9.50am	9.50am
Departs Coromandel: Hannaford’s Wharf							
22 Dec - 28 Dec	-	3.00pm	3.00pm	-	4.30pm	4.30pm	4.30pm
29 Dec - 4 Jan	3.00pm	3.00pm	3.00pm	3.00pm	4.30pm	4.30pm	4.30pm
5 Jan - 25 Jan	3.00pm	3.00pm	3.00pm	3.00pm	8.15pm	4.30pm	4.30pm
26 Jan - 1 Feb	4.30pm	3.00pm	3.00pm	3.00pm	8.15pm	4.30pm	4.30pm

Auckland - Coromandel			
	Adult	Child	Family
One way	\$55.00	\$35.00	-
Open return	\$90.00	\$55.00	\$235.00
Waiheke Island (Orapiu) - Coromandel			
	Adult	Child	Family
One way	\$35.00	\$22.00	-
Open return	\$60.00	\$35.00	-

Child definition is 5-15 years inclusive.
Family definition is 2 adults + 2 children.

Please note:

- A Sunday service operates on public holidays.
- Some Thursday sailings depart in the evening.

In the event of cancellations 360 Discovery may arrange alternative transport arrangements.

A ferry bus shuttle will transfer you to and from Coromandel Town (Samuel James Reserve car park) and Hannaford’s Wharf. There is no additional fare for this service.

Timetables and fares are correct at time of printing. 360 Discovery reserves the right to change fares and departures without notice. Full terms and conditions of travel are available online.

Daily sailings in summer.
Visit 360discovery.co.nz for more information.



Richardsons

Real Estate Ltd
mirreinz

Licensed under the Real Estate Agents Act 2008
Understanding the Coromandel Since 1960

54
years in
business

www.richardsons.co.nz

191 Kapanga Road, Coromandel

Ph: 07 866 8900 - Fax: 07 866 8513

Kim 021 533 174, Robyn 021 448 975

Kelly 021 202 6067, Melissa 027 249 8287

New
Listing



GARDEN OASIS

- Comprising 3,518m2 (more or less)
- Native, specimen, fruit & citrus trees
- Very private, 2 Titles, harbour views
- 2 brm Lockwood home, boat port
- Double garage. \$430,000

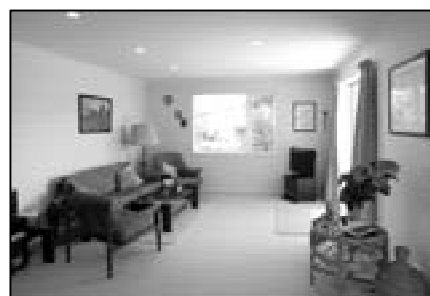
New
Listing



AFFORDABLE FAMILY HOME

- Need lots of space for your family?
- 4 brm brick home with conservatory
- Open-plan living areas, verandah
- 1,165m2 level section close to town
- Double garage, carport. \$389,000

New
Listing



JUST SIT BACK AND RELAX

- Looking for a smaller property?
- Immac 2 brm 'GJ Gardener' home
- Within Coro Senior Settlement Village
- Wonderful presentation, rural outlook
- Internal access garage. \$335,000

Happy New Year

We have a great
selection of 5 new
listings this month

New
Listing



RURAL RETREAT

- Great position for a family setting
- 2 acres on the outskirts of town
- Graze sheep & keep a few chickens
- 4 brms, superb decking, very private
- Garage/workshop, studio. \$595,000

New
Listing



HOLIDAY TIME

- The quintessential 'Kiwi' bach
- Within an easy walk of Long Bay
- 2 brms, small open-plan living area
- Deck and patio spaces, car/boat port
- A great little holiday spot. \$289,000



SOLD



SOLD



SOLD

Richardsons

Real Estate Ltd mirimāz

Licensed under the Real Estate Agents Act 2008
Understanding the Coromandel Since 1960

54
years in
business

www.richardsons.co.nz

191 Kapanga Road, Coromandel

Ph: 07 866 8900 - Fax: 07 866 8513

Kim 021 533 174, Robyn 021 448 975

Kelly 021 202 6067, Melissa 027 249 8287



- GREENHILLS SUBDIVISION
- Section sizes from 449m2 - 854m2
- Stage 2 released – 3 already SOLD
- Easy walk to town. From \$120,000



- Manageable cross-lease section
- 3 brm home, open-plan living
- Small deck area, large garage
- 1st home, rental or bach? \$250,000



- In town, yet feels private & rural
- 3 brms, living opens to decking
- Carport, 881m2 section, large trees
- Distant harbour views. \$290,000



- The quieter part of life beckons
- In Coro Senior Settlement Village
- Well presented 2 brm Lockwood
- Large grge, paved drive. \$295,000



- A great 1st home, bach, rental...
- 3 brms, full length verandah
- Fully fenced ROW section
- Single garage & carport. \$315,000



- Lots of character & street appeal
- Classically styled 3 brm bungalow
- Very spacious living areas, decking
- Storage rooms. \$320,000



- Te Kouma Bay – location is key!
- 2brm holiday home, huge basement
- Original bach attached, sea views
- ¼ acre section. \$389,000



- Contemporary and stylish living
- Long Bay setting overlooking Gulf
- Superb 2 brm home, fantastic décor
- Car/boat parking. \$445,000



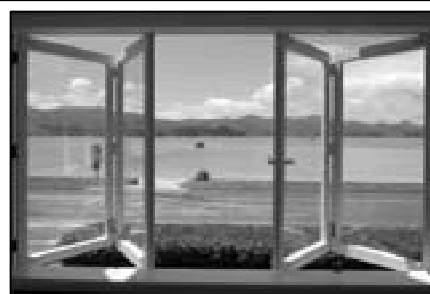
- Atop The 309 Road, VERY serene
- Awesomely PRIVATE, 20.9ha bush
- 3 brm Focus home, brilliant decking
- Garage & studio. \$470,000



- Beautiful Wyuna Bay/harbour views
- Immac presented 2 brm residence
- Open-plan living, decking, garage
- Walking access to beach. \$585,000



- Great summer days at Waitete Bay
- 3 brm home with fantastic views
- Superb decking for summer BBQ's
- Separate garage. \$759,000



- WATERFRONT at WYUNA BAY
- The views and position say it all!
- Well maintained original homestead
- Large section, garage. \$875,000

Coromandel Marine Farmers' Association Comment

By Gilbert James, Chair, CoroMFA

Our Association is (still) considering Sugar Loaf improvement options and we aim to have a clear development plan by early 2015. One conclusion is that while there are typically many and varied options, a fundamental determinant is affordability.

Reading the December Chronicle's update on the Coromandel Harbour Facilities Project update, it appears that all options for Furey's and the town wharf are coming up against that basic hurdle eg, "costs are high and beyond the means of the ratepayer alone meaning that external investment will be essential to achieve this concept".

An example of this first hurdle of cost is the Development Concept drawing shown in the last Chronicle's Harbour Facilities Update. While it has many attractive features, the ~ 130 berths shown would be way short of enough to pay the bills on such a grand development. Also the capital cost of removing and funding somewhere else to put 2-5m of mud deep by many hundreds of square metres of area would be very high as would the ongoing maintenance dredging that the design would need.

While we are on the theme of "cutting cloth to fit" and affordability, surely it remains an option to utilise the current town wharf, with such lengthening, if any, that may be required, as the basis for the pier concept. At least that would save having to deal with the likely enormous cost of starting afresh.

The subtext of all these money concerns is that the blue highway concept into Coromandel is looking pretty muddy, which is most concerning as it would be so beneficial in all respects. Suggestions for a focus for progress that is affordable and achievable, are to consider how to build on what exists now including: how can the current town wharf be improved including as a pier; making ongoing modest improvements including more maintenance and other dredging for the current channel to Furey's Creek and the town.

On behalf of all our marine farmers, best Christmas and 2015 wishes to all.

COROMANDEL REFRIGERATION & HEAT

in association with Browns 100% of Thames

**Need whiteware?
Don't leave town!**

**Good prices: Fridges, Freezers, Washing
Machines, Dryers, Dishwashers, Stoves**



Simpson / Electrolux

Heat Pumps

Warm in winter, cool in summer



NEW ZEALAND'S FAVOURITE AIR



**We have mobile chillers for hire
and party ice available**

Get a quote from Milton
435 Kapanga Rd Coromandel
Ph/Fax 8668463
email cororefridge@extra.co.nz

Ann's Good News, Naturally

Been unwell or thinking to ensure a healthy future?

By Ann Kerr-Bell

Why Choose Naturopathy?

It's not just about symptomatically treating the skin rash, breast lump, nasal polyp, high blood pressure, or massaging or re-aligning the joint that is out. Causes of half health and illness are often multifactorial (many factors), so it's vital to take time to identify the real cause of your pain, inflammation, blister, headache or sore back, etc. Slow and steady gives lasting results. It's common sense. You get thorough, individual attention guaranteed to optimise your health to be the best it can be, for good.

Why Choose Herbal Medicine?

Herbs are powerful medicinally safe and effective, soothing, nourishing. While working medicinally, they protect your gut – the body's gateway for (food) nutrients. Pharmaceutical drugs are derived and manufactured from 70-80% herbs and plants, but these drugs can wreck the gut wall mucosal membrane, kill healthy bacteria and necessary enzymes. This causes other side effects and health issues by just suppressing the symptoms. Avoid side effects, feel great. Get healthy – to stay healthy with nature's medicines.

When you need a medicine, choose herbal medicine first, for optimum healing, create more energy, greater bodily function and to prevent the need for drugs or surgery.

Why Use Real Food?

I have a 5-year-old McDonalds burger (fast food) in my clinic which has never been in a fridge. The bun has never been mouldy, nor has the meat patty gone rotten. The burger is so full of preservatives it has no nutritional value (toxic, slow poison). There are no minerals, vitamins, good fats or healthy natural sugars (complex carbohydrates) left in these foods for our body's cells to absorb. The cells strong structure and optimal functioning depend totally on these nutrients. Food can be your fast medicine, or your slow poison. Choose wisely. Cellular malnutrition leads to disease.

Why Minerals (cell salts)?

Every mineral has a medicinal role in your body. Do this accurate assessment and know your mineral status – www.activeelements.com, user name 259077, password 579819.

More Good News

Summer holidays – come to me for prevention and treatment for the following: allergies-sinus, eczema, hay fever, hives; arthritis; blisters; boils; blood pressure or cholesterol; blood sugar issues; constipation/ hemorrhoids; cancer-skin or other; dehydration; diarrhoea and vomiting; energy lacking; erectile dysfunction; gallstones; gout; hangovers; hair loss; insect/jellyfish bites; irritable bowel; infections-bacterial or viral; hormone imbalances; kids' health; liver pain; migraines; mood swings; muscle aches and pains; menstrual/ menopause issues; stress/anxiety/ depression; sunburn; thrush; urinary tract infection; cellulite/fat loss/muscle maintenance.

Come and have a live blood analysis, see your own blood to know your cellular health, or enjoy a strong sports massage, or a great relaxing massage.

For further information, or to book an appointment, contact Ann Kerr-Bell on 021 046 1647

Natural Medical Centre

The natural alternative for all your health requirements

At Tiki House,
Coromandel.

For appointments,
phone or text: 021 046 1647
or email: annk-b@ps.gen.nz
www.naturalmedicalcentre.co.nz

Ann Kerr-Bell

B.Hlth.Sc. (Comp.Med.)
Adv.Dip.Naturopathy
Adv.Dip.Med.Herb. MNZAMH
Naturopath
Medical Herbalist
Nutritionist
Massage Therapist

Notice from Port Charles Residents & Ratepayers Assn

Two fantastic days in the far north – come and join the fun.

28 December, 11.20am at Carey Rd the Fun Run commences followed by the Fun Day at Sandy Bay. Prizes and raffles galore.

31 December, 11am at Sandy Bay the infamous sand castle competition



SeniorNet

By Loes Beaver



We are in holiday mode at present until the New Year.

“Get more savvy with SeniorNet and share more family experiences” is our motto.

SeniorNet is a community training network that supports and motivates people aged 50+ to enjoy and use technology in everyday life, so come along and join us in the New Year.

The SeniorNet Festive Ditty

By Linda Cohen, SeniorNet Federation

You know we've reached that time of year
When the sun shines, days are longer and Christmas ads appear
New phones, new notepads, and other techie gear
Is promoted to tempt us beyond all fear
We contemplate new gadgets and how cool they'll look
And imagine posting selfies on Facebook
We search, post, blog, email and maybe tweet too
There's no end to what we can do
Next year no doubt there will be new technology to explore
These days there's always new gadgets, of that you can be sure
We've learned so much with friends we've met
It's cool being part of SeniorNet.

Contact Loes (07) 866 8053

Summer and the Sea

By Catherine Delahunty, Green MP



The pohutukawa are flowering and I would love to be up the coast on the Port Jackson Road beneath those extraordinary trees as they drop crimson needles on the gravel road and grey boulders. Soon people will flood into our community and they will notice the damage of this year's massive storm in the north Coromandel, not to mention the slips on the road to the Kauaeranga Forest Park. The visitors may not see the incremental changes to the water quality in the inner Hauraki waters. It just looks like muddy water but actually there are good reasons why some scientists are very worried about the biodiversity and water quality of Tikapamoana. The scientist with 25 years' experience researching the water quality in the area, Professor Zeldis, has stated that the risk of the Firth of Thames becoming a dead zone is high. This potential disaster is a consequence of excessive nutrients which flow from the dairy farms of the Hauraki Plains via the Waihou and the Piako rivers plus some other forms of pollution from sewage overflows and coastal development. The impact of Auckland city on our waters cannot be minimised but the flushing of the outer Gulf ensures this contamination is spread far and wide whereas the inner waters of the Gulf are far more static and thus more polluted. We are forcibly reminded of this pollution when more frequent, larger algae blooms appear and dogs on beaches are risk from eating toxic substances. However it's the invisible undermining of the biodiversity which should also be the trigger for a change in our behaviour towards this once abundant and beautiful body of salt water.

There are some cold facts flowing down the rivers into the Gulf. We are the greatest importer of PKE (1.6 million tonnes annually of palm kernel) in the world to feed to the hugely increased number of dairy cows. The extra feed results in huge additional supplements into the environment on top of fertilisers such as urea. This all ends up in rivers along with increased cow urine, sediment from stock damage and erosion, plus algae and other pollutants, and this enters the Gulf. The excessive amounts of nutrients and other pollutants is extremely damaging and no amount of technical fixes will work if we keep intensifying agriculture.

It's a long drive from the northern beaches of the Coromandel down to the brown waterways of the Waikato but it's all connected and in the end the whole Gulf will be affected. Summer should be for swimming, fishing and kai gathering and it can be if we are willing to clean up the causes of contamination.

K Bay Kayak & Paddleboard Hire

PADDLE, EXPLORE, PLAY, K BAY

Mussel farm fishing, Sightseeing,
Birdwatching, Kayak trails,
River, coastal exploration,
Safe friendly Kayaks &
Paddleboards. Affordable prices.
Endless paddling options
for all abilities.

All enquiries welcome,
ph Amanda 866 7097
0274316208
www.kbaykayaksuphire.nz

Situated in Kennedy Bay - 20mins drive from Coromandel town.

Have a Great Coromandel Summer at the Chai Tea House

Live Music & Events

January 10, 8pm

- guitarist extraordinaire
Nigel Gavin

January 17, 9pm

- DJ night with Matt Rapid
& friends



Chai Tea House

Come visit our friendly licensed vegetarian cafe and juice bar with free Wi-Fi in the heart of Coromandel town. Have a fresh pressed juice, fresh fruit smoothie, organic chai latte or be wild and try our famous home brewed Kombucha Health Tonic. You will find home-baked organic bread, organic loose-leaf teas and great Kokako organic coffee. Enjoy our freshly baked gourmet cakes & organic non-dairy Nice Cream, falafel wraps, bagels, paninis, tasty quiches and salads.

Discover the peace of our back garden courtyard with a sand box for the children.

Check the event calendar on our website www.thechaiteahouse.com for upcoming concerts and events.

24 Wharf Road, Coromandel Town
contact@thechaiteahouse.com

Phone: 021 893 055
www.thechaiteahouse.com



Coromandel Independent Living Trust

Education & Training Centre

Happy New Year! Welcome to a new year of fun and interesting learning opportunities.

The Education and Training Centre will re-open on Monday 2 February 2015.

Please forward all enquiries or registrations of interest to: ace@cilt.org.nz We will contact you as soon as we return.

January Courses

English for Migrants

Need to improve your English speaking skills? Know someone who wants help with their English? Enrol onto our Level 1 or Level 2 programme so you will speak English confidently.

Tutor: Kaye Anderson
Venue: Education Training Centre @ CILT
Start Date: 22 January 2015
Time: Mondays 4-6pm, Thursdays 4-6pm
Please contact our tutor Kaye Anderson to register your interest on (07) 866 8968.

February Courses

Te Reo Maori - Maori Language

Enrol onto this very popular course that starts with the basics of pronunciation, language structures and vocabulary. Emphasis will be on cultural understanding so you will feel comfortable in a Māori environment.

Tutor: Peg Harrison
Venue: Education Training Centre @ CILT
Start Date: 16 February 2015
Day/times: Mondays 1 – 3pm
Duration: 8 weeks
Cost: Gold coin donation

Introduction to Computing (PC1)

Enrol onto this course now and learn the absolute basics on how to use a computer at home or in the workplace.

Note: if you want to use your own laptop, please let us know a week before the start date.

Tutor: Kaye Anderson
Venue: Education Training Centre @ CILT
Start date: 18 February 2015
Day/times: Wednesdays, 10 – 12pm
Duration: 4 weeks
Cost: \$20

March Courses

Digital Photography

Back by popular demand... Enrol onto this course that will teach you how to maximise the use of your digital camera and learn how to take photos like the professionals.

Tutor: Deborah Hide-Bayne
Venue: Education Training Centre @ CILT
Start date: 5 March 2015
Day/times: Thursdays 10 – 12pm
Duration: 4 weeks
Cost: \$20

Defensive Driving

Highly recommended for new drivers. Enrol onto this all important course that will you equip you with the skills to drive safely on our roads. At the end of this course you will be awarded a certificate that will reduce the restricted licence time down from eight months to two months.

Tutor: Ron Agnew
Venue: Education Training Centre @ CILT
Start Date: 18 March 2015
Days/Times: 10am - 2pm
Duration: 4 sessions
Cost: \$50

Heavy Traffic (HT)

Licence Preparation

This course will prepare you to sit the test for the high demand licence to drive trucks. To sit this test you must have held a full car licence for more than 6 months.

Tutor: Ron Agnew
Venue: Education Training Centre @ CILT
Date: Tuesday 10 March 2015
Times: 9am - 2pm
Cost: \$50

First Aid Refresher

Refresh your current certificate that reinforces the skills and confidence you need to deal with emergencies at home and in the workplace. Your current certificate must be not be older than 2 years, 3 months.

Provider: St Johns
Venue: St. John's Rooms, Tiki Road, Coromandel
Date: Tuesday 31 March 2015
Time: 9am – 4pm
Cost: \$104

April Courses

Restricted/Full Driver Licence Prep.

This course will prepare you to sit the test for your restricted/full driver licence. (You must have held a learner licence for more than 6 months.)

Tutor: Ron Agnew
Venue: Education Training Centre @ CILT
Date: Wednesday 1 April 2015
Times: 10am - 3pm
Cost: \$20

Learner Driver Licence Prep.

This course will prepare you to sit the test for your learner driver licence. (You must be at least 16 years old.) Highly recommended for high school students.

Tutor: Ron Agnew
Venue: Education Training Centre @ CILT
Date: Wednesday 1 April 2015
Times: 10am - 3pm
Cost: \$20

Website Design

Design, create and publish your own website. Be introduced to HTML and web authorising software: KomPozer, Photoshop, Web browsers, CCS and JavaScript.

Tutor: Stephen Hutton
Venue: Education Training Centre @ CILT
Start Date: 7 April 2015
Times: Tuesdays 10am - 3pm
Duration: 6 weeks
Cost: \$30

Future Courses

We have other courses on the horizon, so register your interest with us via our website, www.cilt.org.nz.

Electronic Music Production

A rare opportunity to operate a sound board, mix sounds and create music electronically.

Day Skippers Certificate

Skipper your own vessel with confidence and knowledge of the new regulation boat safety practices so you are ok out on the water.

VHF Radio Operations

Learn how to operate a VHF radio from your vessel to communicate distress, call search and rescue, respond to vessels in distress, get weather updates and save your life in an emergency.



Coromandel Independent Living Trust (CILT) Resource Centre

By Rebecca Toon, Resource Centre Co-ordinator

The Resource Centre reopens on Wednesday 14 January. We hope everyone had a great Christmas and New Year's.

Travel assistance to hospital appointments before 14 January

If you are a Community Services Card holder and need a volunteer driver to a Thames or Hamilton hospital appointment, please contact your GP. They will help you access our fantastic team of volunteer drivers. Unfortunately we will be unable to provide travel assistance over this period until we re-open. So keep your appointment letters, get them stamped by the medical worker you are seeing and bring them in after 14 January. We will reimburse you for petrol then.

Mobility Van Christmas January 2015 dates

The first trip to Thames will be on 15 January. The van will continue to collect people from their homes around 9am and return from Thames at 2pm. Call or come into the Resource Centre to book a spot when we reopen on 14 January.

Heartlands Centre visits for December and 2015 – The next visit from Maori Land Court will be on 11 February.

Other agencies using Tiki House such as Probation, Gabriel the Osteopath and the WDHb nurses, will continue to make visits while the Resource Centre is closed. Contact them directly to make an appointment.

Coromandel Refuse Transfer Station (CRTS)

CILT took over the management of the CRTS in July under a subcontract with Smart Environmental Ltd. André & Tuinga are your Coromandel site operators.

Throughout the peak season which begins on 23 December, opening hours will be as follows:

Monday - Friday 12.30-5.30pm; Saturday 10.30am-5.30pm; Sunday & public holidays 10.30am-7.30pm.

The CRTS is open everyday except Christmas Day. If you miss your collection, transfer stations will accept official blue bags

and recycling for free but please do not leave rubbish at the gate!

There is now a new system for limited amounts of cardboard collection, which has recently been installed by Smart Environmental Ltd. If you have commercial volumes, please contact Smart Environmental to arrange for collection.

Materials not handled by your local RTS:

- Clean fill, hard fill, trees, stumps etc.
- Offal, dead stock/animals
- Bulk liquids
- Radioactive wastes
- Explosives
- PCB wastes
- Asbestos/products containing asbestos
- Items longer than 1.5m

CILT is committed to reducing the Upper Coromandel communities' amount of waste going to landfill and is working towards creating a Community Reuse Centre on the CRTS site.

André will also be available on Saturdays between 10am-1pm if you have any reusable items to drop off or would like to buy anything we have already collected.

Coromandel Independent Living Trust (CILT) Resource Centre, Tiki House, 45 Tiki Road. Hours: 9am-3pm Monday to Thursday Ph/ Fax (07) 866 8358. Email: cilt@cilt.org.nz or website: www.cilt.org.nz

Artists in the Making (ATM)

I would like to welcome two new people to our group, Claudine and Mary, who have just slid in before the end of the year. We will be closing ATM on Friday 19 and reopening on Wednesday 28 January.

Some of the highlights of this year have been holding a stall of ATM work at the local Easter Market. It showed what a great standard we are achieving over here. A number of people have sold their work this year, including three

people's mosaics being bought as prizes for the Hamilton Disability Expo. It has been great having Tiana attend from Coromandel as part of the Gateway programme. We have also just received \$200 from a Creative Communities grant to hold a soap-making workshop early next year which we then plan on having a play with carving.

Thought for the day: Our days are happier when we give people a bit of our heart rather than a piece of our mind – Anon.

Contact Anne Bowden, Arthur Street, Whitianga. Ph (07) 866 0032 email atm@cilt.co.nz



Lorraine and Robyn with Robyn's felted hats



Proudly supporting business excellence in our community

Peninsula Business Services Ltd

Chartered Accountants Business Advisers

Upstairs Cnr Blacksmith Lane & Albert Streets in Whitianga and 105 Kapanga Rd in Coromandel.

Ph 07 8664195

gay@pbservices.net.nz

www.pbservices.nz



COROMANDEL PLUMBING

(1986) LTD

PO Box 23, 1740 Tiki Road, Coromandel

CRAIG DUDSON

Phone/Fax 866 8814

A/Hrs 866 8837



Plumbing, Draining and Gasfitting

Coromandel Pier + Rail Project

By Scott Wynands, Project Development Manager, Coromandel Pier + Rail Project

The Coromandel Pier Project is steadily progressing. We are setting up a Charitable Trust and have had a quote from Jacobs Consultants to do a Business Case which we will present to Council for funding purposes. The bound Pier Concept book is currently available at Driving Creek Railways and the Coromandel Town Information Centre, with more copies soon to be distributed.

I have recently spoken with Leigh Hopper, manager of Hopper Construction, the company that developed Whitianga Waterways and Pauanui Marina. Leigh also sits on TCDC's Economic Development Committee as an independent advisor and has told the Mayor much of the information detailed below.

Leigh did not think that a dredged basin in Coromandel Harbour was viable due to the fluid nature of the fine sediment in the harbour causing any channel or basin to fill up rapidly, requiring constant maintenance.

The excavation and development of the marina/basin would be much more difficult than on the eastern side of the Peninsula due to the difficulty of working in and dealing with fine, muddy silt that is heavily contaminated and the practical issues around managing that safely.

In the current economic climate a marina in Coromandel Harbour is not a viable option. The costs for the berths to offset capital and ongoing costs would not stack up based on his experience and knowledge in the industry.

When asked about a conflict of interest due to his development in Whitianga (berths and sections for sale) he said that he did not want to see ratepayers burdened with an economic disaster in an already fragile economic climate. He thought that the mentality of creating intensive capital/highly geared projects in NZ had to change, as it was just not working.

When asked about the Pier concept and the possibility of creating a marina with breakwaters on the end, he stated that as there is no open ocean swell, strong wooden breakwaters would be a viable option to create a sheltered environment for a marina and that getting out to deep water was the most sustainable and environmentally friendly solution in the Coromandel Harbour if we could find the funding.

When I tried to discuss this information at the last Stakeholder Working Group neither the Project Team nor many of the group members were open to the discussion and the matter was closed. It is in my opinion some of the most relevant and practical information we have on the Harbour Project, as it's based on extensive professional experience in a local context. The last meeting was overshadowed by the realisation that the Furey's Creek Dredged Channel will cost around \$9 million with no funding potential and that the Dredged Basin Concept would not address congestion and access issues for many years to come.

360 Discovery Ferry

The following is a summary of an informal discussion I had with the skipper of the 360 Discovery ferry. He stated that it would not be practical to run a fast ferry as a commuter service to Coromandel town for the following reasons:

- Cancellations due to weather conditions make the service unreliable
- The current ferries are designed to cope with the weather conditions in the Hauraki Gulf. A fast ferry would not handle these conditions as well, thereby reducing passenger comfort.
- The conditions required to travel at a speed greater than the current 21-knot average occur only approximately 30 percent of the time
- The ferry cannot work to a timetable based on the fastest speed. The baseline for the crossing must be a slower speed of approximately 18 knots to allow for lost time in rough weather with the focus being to maximise passenger

comfort in these conditions.

- Connecting services at either end need to be based on the slower speed also. A faster crossing means that passengers will end up waiting at the other end for transport.
- Coromandel town's strengths lie in its potential as a tourist destination

The idea of a commuter fast ferry is one of the fundamental drivers behind the harbour project for TCDC. It is frustrating that these simple facts have been overlooked during the more than \$400,000 worth of research conducted thus far by the councils project team.

Ika Mata

Extract from the January chapter of local cookery book "Coromandel Flavour" by Deborah Hide-Bayne

For 4

1 medium snapper
ice cubes
juice 2 lemons
thumb-sized piece fresh ginger, peeled
1 clove garlic
2 apple cucumbers, peeled
1 tomato
½ capsicum, deseeded
½ red chilli
250ml coconut cream

salt and freshly ground black pepper

Take the day off and go fishing...

Fillet your snapper, remove skin and cut it into cubes.

Soak the cubed fish in ice cubes, pinch of salt and lemon juice (enough to cover the fish). Leave in the fridge for at least 2 hours or overnight.

Grate the ginger, crush the garlic, dice the cucumber, tomato and capsicum, and finely chop the chilli.

When the fish is completely white, drain and place in a bowl with the other ingredients, including coconut cream, then add salt and freshly ground black pepper to taste.

Mix it all up and let it marinate for an hour or so in the fridge.

Note: The fat content of coconut cream varies hugely depending on what brand you buy. If you want to watch your calories, go for one with a lower fat content—less than 12%.



Ika Mata

Coromandel Glass
available throughout the holidays
GLASS REPAIR
CARAVANS/HOUSES/COMMERCIAL



10% DISCOUNT
for supercard holders

WE CAN ALSO REPAIR OR REPLACE:
window handles and stays
door locks and hinges
ranchslider wheels and handles
rubber seals

PH 866 8869 CELL 027 661 0190
2330 TIKI RD

TAPAPACIFICA EXHIBITION

A collection of vintage, traditional and unusual Tapa cloths from Samoa, Tonga, Fiji and Papua New Guinea will be shown and can be purchased at the Tapapacifica Exhibition in Coromandel town at Hauraki House Gallery from Jan 10th until Jan 19th. Open 10am until 4.30pm. Also other art will be on display.

For more info: www.tapapacifica.com

Museum News

By Raewyn McKinney

The annual BBQ for members and volunteers was held at the Museum on Sunday 7 December, and we were thrilled to see a good group of members come along. This is probably the one day of the year when we get a chance to get everyone together, so it was great to see some of the "old hands" present. The weather co-operated beautifully with a sunny afternoon for the event and, as usual, our members produced a great spread. Our sincere thanks go to Ian for bringing along his barbeque and for organising everything, especially the clean-up at the end. Thanks also go to Ashley and Frank for helping Ian, and for cooking the excellent Coromandel Butchery sausages.

Now that we are entering the summer, our opening hours are extended, and the "behind the scenes" work tends to take a back seat. Work is progressing on the Masonic Lodge exhibit, and it is really looking quite impressive. I am sure anyone who hasn't visited the museum for some time will get a pleasant surprise.

Unfortunately, the policy of the Coromandel School of Mines & Historical Society Inc is that

any items displayed must be the property of the museum, and we therefore cannot accept items on loan. However, we are always happy to accept donations, particularly of items with a Coromandel connection. I have been looking at our "technology" exhibits and realised that times are moving so fast, there are some developments we do not have on display. We have a couple of gramophones, but I wonder if anyone is able to donate examples of the technology that came between gramophones and today. Please contact a member of the committee if you are happy to donate any such items to the museum.

The committee of the Coromandel School of Mines & Historical Society Inc wish everyone a very happy and safe Festive Season.

The museum will be open from 1pm to 4pm daily from Boxing Day through the summer.

Many thanks to all the volunteers who man the museum over the summer. If anyone is able to volunteer to spend half a day every week or month minding the museum, we would love to have you join our team. Please ring Sue Wright on (07) 866 8039 for further information

MUSEUM MONTHLY COMPETITION "Who What Where When"

Please identify this photo and give us as much information as you can. Bring or post your entry to the Coromandel Town Information Centre with name and contact details by **Friday 30 January**. All correct entries will go into a draw for a voucher from Coromandel Four Square.

I am pleased to report that, once again, we had many correct entries for our November competition. The correct answer was, of course, the Coromandel Town Information Centre building in James Reserve. The winning entry for the grocery voucher this month was Pat Williams again! Well done, Pat! To win once is a good effort, to win two months in a row is an amazing coincidence.

Although it is complete chance as to whose entry is drawn from the hat, Pat did send in a lovely entry, giving the history of the building. Most people do know it was built as a toilet block, and of course, there is still a public toilet beside the Information Centre. In the early days the room now occupied by the Information Centre was designated a rest room, and was used by the Plunket Nurse for the weighing of babies, and as a meeting place for new mothers.

Thank you to all who entered, and good luck for this month.



g.a.s. gasoline alley services

Service
the way
it used to be

Coromandel Garage Ltd

Your one stop automotive and fuel shop

Best Value
for your money
with over 40 years of
combined experience
from our two
fully qualified
mechanics.

What we offer:

- Service and repairs on all makes and models
- WOF's
- Exhaust fabrication
- Truck and tractor maintenance & repair
- Motorcycle WOF's
- Pensioner WOF's \$40
- Call out's & tow in's
- All tyres
- Fuel
- LPG
- Trailer hire

**BP Card
Accepted**

**Coromandel Garage Ltd, 226 Wharf Rd,
Coromandel. 07 866 8736**

Proprietors: Darius Visser & Hilary McCrae



g.a.s.
gasoline alley services

Christ Church News

By Barbara O'Reilly

Happy New Year to all from the congregation of Christ Church, Coromandel.

Father Philip Sallis is now installed as our new parish priest. He and his wife Kathy were heartily welcomed on 23 November. He will be in Coromandel on the weekends of fourth Sundays in the month.

We all look forward to working together to spread the Good News and to welcoming Coromandel people to the various activities and events we have planned for 2015.

High on our "to do" list is a new venture. Commencing in January, the Christ Church Anglican Hall will become an all ages drop in centre on Thursday mornings. A place to meet with friends, have a cuppa and a chat. More details later on.

Services

Our service times have changed from last year. Service times are now: 2nd Sundays in the month, Morning Prayer led by Mr Rodney Denham; 4th Sundays, Parish Eucharist, celebrant Father Philip Sallis.

Contacts: Parish Priest Father Philip Sallis ph (07) 866-8467, mobile 021 347 794. Administrator and hall bookings – Barbara O'Reilly (07) 866 8299, mobile 027 208 9595. Website: service times, news and photo gallery – www.christchurchcoromandel.org.nz

Animal Rescue

By Alice and John Parris

Happy Mew Year to everyone. Firstly thank mew to everyone who supported us with our fundraising for the cats. We truly appreciate the support. Thank you to all who have donated cat food, kitten foods and biscuits.

We have homed many prior to Christmas and Dolly and Mitchigo went to a rural property on the Kopu Hikuai Road, which was awesome as both cats we are sure wanted to remain here at rescue. Mitch was one that I personally would love to have kept, being a hilly, but forever homes that are one-on-one are greater than a home with many can give.

Pending a forever home on a farm in Huntly are Tootsie and Sparkles, also hillies; tears certainly will be shed on that one when they leave!

Remaining on our olders is Huffa, Vecar, Modalida, which is just amazing to get these felines homes, as they have been through several kitten seasons and not chosen for various reasons, mainly too old, not little and cute and not fluffy!

Rastus, our 17-year, was the face of the campaign – pets are for life not just for Christmas. A gentleman saw this and rang us and said they would love to adopt him. Having explained we do not know if he had any health issues or not and age-related health and well being the guy said, we



have just lost our 21-year-old and we don't want Rastus to live his days out in a rescue unit! When they arrived the guy said to Rastus, "It's okay mate, I have your gold card out of here." Rastus left

and has settled in to his new lifestyle and that is an incredible ending for our old darling.

Newbies – Prior to Christmas there were a few litters of kittens but the people were advised to take them to Vets Plus Pets in town as they rehome kittens vaccinated, wormed and desexed and they rehome faster than we can possibly do, which worked for both of us.

This has given us breathing space to rehome our olders, fundraise and be ready for a deluge over the holiday period. Also to begin maintenance to four of our outdoor units but work will be gradual and funds permitting! We have to get two sheets of Nova roofing, and four sheets marine ply; also fix two playhouse doors and repaint all five units, so a lot ahead.

We have a huge challenge ahead of us end of the month and beginning of February but something we will deal with then.

Wanted – homes for our older felines, farm home only; also home for a very shy 6-year-old spayed Highland Fold, lovely girl. Also kitten/cat food – tinned, sachets, biscuits. Thank mew.

Meow furr now.

Enquiries Animal Rescue Thames, 532 Thames Coast Road, RD5, Thames 3575 (07) 868 2907

*ice-creams*coro pies*unique gifts*
 all your camping & holiday needs
 great range of organics
 *bait & fishing tackle*ice*
 *gas bottles*alcohol*magazines*
 milk & cream & your daily bread
 order to ensure you don't miss out

LAST STOP NORTH
SUMMER OPENING HOURS
 OPEN DAILY : 8.00am – 6pm or later...
 07 866 6805

SCOTT REVELL
 BUILDING CONTRACTOR

- New Homes
- Renovations
- Additions \ Repairs
- Bathrooms
- Decks \ Fences \ Landscaping

Prompt Professional Service
 srevel2010@hotmail.co.nz
027 861 6592
 COROMANDEL

Luxury motel suites
 with spa baths,
 and SKY TV 50+

View prices and book online
www.theolivemotel.co.nz
 245 Tiki Road,
 Coromandel Town
 07 866 8966
bookings@theolivemotel.co.nz

Coromandel teen wins prestigious quarrying award

Young up-and-coming Coromandel based quarry worker, Hamish Kelsey, has won the prestigious Stu Marsden award at the Bay of Plenty Institute of Quarrying Christmas awards.

The award recognises excellence and passion in the industry, along with a strong focus on health and safety and at just 17 years old, Kelsey has already impressed key stakeholders in the quarrying industry.

Hamish said: "It was an awesome surprise to win this award and I didn't expect it. I just go about my job and do it as best I can... I just love it."

Award judges said nominations are peer reviewed by the Bay of Plenty branch committee after meeting the criteria and added "Hamish was a standout."

Many previous recipients of the Stu Marsden award have gone on to be successful managers and leaders in the quarry industry.

For winning the award, Hamish gets \$800 to put towards further professional development, along with a free membership to the Institute of Quarrying.

Coromandel Budget Advisory Service

By John Gaffikin-Cowan

I must start with a very hearty "thank you" to all of you in the area who have supported us at Budget, at the Community Garden and most especially at the Food Bank. Our Christmas tradition of offering food and goody hampers to clients on our books could not continue without all the generous gifts from the community. Donations flooded in during December which allowed us to supply over 20 families and individuals with a really festive treat to end the year. We hope to be able to write to everyone who contributed either cash or in kind, but since many of the gifts were anonymous I want to take this opportunity to thank you all.

Although being a Budget client is not a prerequisite for having a food parcel, it stands to reason that if someone is having a financial crisis and needs to ask for one, then they could probably profit from some budgeting advice. And by offering a food parcel to our clients, we see this as a means to allow them to free up some cash, which would have otherwise been spent on food, to address outstanding bills.

One lesson which we learnt recently concerns placing goods in storage. It would appear that if you run into debt with a storage company it will be next to impossible to access your goods until you pay off the arrears. This can prove very awkward if there is important documentation – passports, birth certificates and the like – in, for example, a desk or box in the storage unit. So, where possible, keep vital papers including proofs of ownership, purchase agreements and wills somewhere you can get at them easily. And consider what you should have copied and perhaps kept for you by a family member or close friend.

And finally a plea from the Food Bank to keep dropping off clean containers and small bottles. We buy rice, sugar and oil in bulk and use smaller jars to portion it out for the food parcels.

So Happy New Year to everyone. Let's hope it will be a successful one for us all.

The Budget Service is an incorporated society belonging to the New Zealand Federation of Family Budget Services. If you wish to make an appointment, the Budget phone number is (07) 866 8351 where you can talk to Anna, Caro, Maureen, Leigh or John. The office at 950 Rings Road is open Monday to Friday 11am-2pm and other times by appointment. The Budget cell phone number is 022 018 0849 – we reply to texts and messages during office hours

Coromandel Contract Bridge Club

By Judy Bronlund

We have had our last night of bridge for the 2014, year, we had lots of yummy nibbles in between our games of bridge. there was a gift at the end of the evening and most important of all was the handing out of prize money and trophies. Congratulations to all our winners in 2014. The most successful of our players was Ischelle, she won just over \$100. five other members took home over \$50 each, well done guys and gals. We have 13 different competitions throughout the year as well as a Sunday tournament in May with fun nights on the holiday Mondays. So if you would like to join us in 2015 please make contact, our first night back playing bridge will be on the Monday of Auckland Anniversary Weekend play will start at 7 pm at the St John rooms next to the fire station.

Contact Natalie (07) 866 8422 or Val (07) 866 8730



ASTON
ELECTRICAL LTD

- Registered Electrician
- 25 years' experience
- Prompt and professional service
- Domestic and Commercial
- Free to view satellite TV installations

**Call now on 07 866 7117 or 027 270 9140
or email astonelectrical@me.com**



Tangiario Kiwi Retreat
Port Charles, Coromandel



**Cafe, Restaurant and Bar
Operating Hours**

OPEN 7 DAYS OVER SUMMER
10am onwards.

Happy Hour Friday & Saturday 4-6pm.
Bookings essential for dinner.

**Relaxcoro
massages
available
onsite**

*Happy new year from
everyone at Tangiario*

1299 Port Charles Road
RD 4 Coromandel
Ph 07 866 6614
info@kiwiretreat.co.nz
www.kiwiretreat.co.nz



**1 hour north of
Coromandel Town**
**LODGE
ACCOMMODATION
NATURAL
SWIMMING HOLE
WIFI & SJOELBAK**

Summer Tenders x 3...



Coro Country Lifestyle - Tiki Rd

- 2.17 hectares of mainly flat pasture
- Fenced into 3 separate paddocks
- Planted with mature gum & willow
- Currently tenanted by a few sheepies
- Even a peek of the sea!

- Graze it, Camp on it, Build on it, Grow on it!
Ample room to create your future lifestyle on this sweet spot!

TENDERS CLOSE
30 JAN 2015

Native Bush City Limits - cnr Preeces Pt & Tiki Rds

- 2ha, forested in natives and pines..
 - Excellent private house site..
 - Northern aspect and views..
 - Power and phone very handy
 - Lots of beautiful young specimen kauri
- Great potential to develop this well located block into both a private home site and possible commercial enterprise with highway location.



TENDERS CLOSE
30 JAN 2015



The Pinnacle of Port Charles

- Retro 3 bedroom, 2 bthrm holiday home
 - Sundrenched, elevated & private
 - Ply & Batten easy care exterior
 - Open plan living with a seamless flow out to wrap-around decking
 - Stroll down the road to Little Sandy Bay
- High on the hill, very secluded & with a mighty outlook..
Bring your family & enjoy happy holidays for generations..

TENDERS CLOSE
30 JAN 2015

Businesses For Sale...



Stapleton's

Coromandel's iconic
Haberdashery store.
21st Century fit!

\$70,000+GST(if any)+SAV

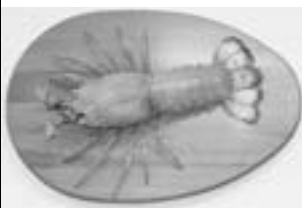
Jan Autumn
0274 788 930

Coro Fish n Dive

Born to fish but forced
to work? Combine the
best of both worlds!

\$39,000+GST(if any)+SAV

Ian Kemp
0274 777 900



Success Cafe

Your own little Gold
Mine right here in the
main Street!

\$199,000+GST(if any)+SAV

Ian Kemp
0274 777 900

Super Sections...

Glenfern Drive - Waterfront views,
2633m², serviced.
NOW \$259,000!

Bellville Drive - 3458m², lifestyle plus,
do-up bach insitu, power & ph.
\$156,000

Hauraki Road - Holiday
headquarters! A level 3788m²
NOW \$229,000!

Wyuna Bay Rd - Spectacular
waterfront views, 2674m² & 1917m²
From \$550,000

Coromandel

JUST LISTED



Fantastic Fix-Up

Situated on a 1158m2 section. Step out the back door and you're looking straight at a magnificent backdrop of the Coromandel ranges and bush.

- Great place to unwind
- Great location ~ 5 mins to town & 10 mins to beaches & boat launching
- Great investment opportunity

This wee Cottage could be "A Jim Dandy" if you're handy Or, you could bowl it over and start afresh. Whatever you decide, this little gem is too good to be ignored!

\$240,000

Jan Autumn 0274 788 930

www.coromandelproperty.co.nz CO1660

Coromandel

JUST LISTED



Country Fresh...

A slice of paradise, native trees & bush, native birdsong, fruit trees, flower & veg gardens..

2 brm cottage + sleepout privately nestled on 1 1/2 acres.

CO1552 PBN over \$399,000

Jan Autumn 0274 788 930

Kennedy Bay

JUST LISTED



Beach Bach Bliss

Great holiday camping set up - Skyline 'gottage' on grassed 809m² section heaps of room for tents, caravans & boats... It's very affordable so grab it quick!

CO1654 \$179,000

Ian Kemp 0274 777 900

Coromandel

MUST SEE!



Coro Lifestyle - With Style!

As new & immaculate 4 brm home, 5th brm/office, 2 lounges, sunny deck, covered BBQ patio, double attached garage, gardens, seaviews & excellent location!

CO1656 \$595,000

Ian Kemp 0274 777 900

Just Sold...



Welcoming John McCaughan...



Harcourts Coromandel are excited to be able to welcome John McCaughan to our Sales Team.

Well travelled, down to earth & everybody's friend, John has numerous Coromandel connections & has decided to call our slice of paradise home. Stop in at the office to say Hi, John would love to meet you!

Happy New Year..!

The countdown to the start of 2015 begins! Make sure to enjoy this time with family & friends. We wish all our Past, Present and Future Clients a safe, happy and prosperous New Year...

From Ezy, Jan, John, Diane & Natalie

Death Notice for Shirley Teresa Walker

By Jane Gunson

Shirley Teresa Walker (nee Hannaford) passed away with dignity and grace, surrounded by



her family, on 30 November. Shirley is the youngest daughter of the late Fred and Olive Hannaford and granddaughter of Robert and Emily Campbell, all of Coromandel town. Along with her sisters and brothers, Bob, Mary, Freda, Dallas and Patricia Hannaford, Shirley was born in the Coromandel Hospital. She was born on 13 November 1931. The family attended primary school in Coromandel town. Shirley then attended St. Mary's Secondary College, Ponsonby, as a boarder with her sisters, while the family continued to live in Coromandel. Shirley went on to graduate from Auckland University, marry Gregory Walker and have a family of her own, living in Auckland.

Coromandel town and Shirley's extended family residence at Te Kouma has continued to be a second home for Shirley and her own family. Since the birth of her first child in 1957 to this day, her family has spent every school and summer holiday in Coromandel. We wish to acknowledge the friends and community of Coromandel town and the lifelong commitment Shirley has had to Coromandel.

A Tribute to Shirley Walker

By Wailin Elliott

I would like to acknowledge the deep affection I felt for Shirley Walker. I always enjoyed the times we had together whenever she visited Coromandel and in sharing memories of her childhood here. The Hannaford family used to live in the township in what is today referred to as the "Lillis House" after two mining brothers who lived in the house for many years. It stands next to the old Golconda Hotel – nowadays renamed Admiral Arms. But I always refer to it as the Hannaford House. The Hannaford family had a grocery store in town which in my early days of living here in Coromandel belonged to Harry Smith. It was a wonderful old style grocery store where the grocer weighed out goods and they were not prepackaged. The three Hannaford girls, Freda, Pat and Shirley, also sold sweets at the local cinema which used to stand on the land now occupied by Coromandel Refrigeration.

I first met Shirley when I went searching for mulberry leaves. About 30 years ago I decided that I no longer wanted to spin wool but instead would raise and spin my own silk. With difficulty, I was able to source some silkworm eggs and began this task. Because the mulberry trees I planted on our property here at Driving Creek were too young to provide enough leaf, I scoured the town and environs for enough leaf to feed my hungry, voracious worms and so discovered that the Hannafords had a mulberry tree at their place in what today is known as Hannaford's Bay where the wharf – also named after the family – was built. My information said that the Hannafords used to have a huge mulberry tree on their property so I called in one day in desperation as I was fast running out of enough leaf to feed my fast growing family. It was Shirley I met and our friendship grew from these beginnings. At this time the homestead was only used in holiday time when the Hannaford families could visit. There used to be a beautiful mulberry tree, so large it stretched a long way over the narrow road. But it had been chopped down and a cutting had been taken and planted further back on the property. Shirley showed it to me and gave permission for me to pick leaves whenever I needed – for which I was extremely grateful.

Shirley was also instrumental in planting another mulberry tree – a white mulberry this time, between the bach and the homestead – which grew to a huge size over the years and I also used to get leaves from, but that too has now has been chopped out. This was the start of a firm friendship that has spanned 30 years. I was always delighted to see her every summer and especially to see the three sisters, Freda, Pat and Shirley, strolling together up the main street. They seemed part of our wonderful summers in Coromandel.

Dear Shirley, your physical life on earth is over, a wonderful wife, mother and such a kindhearted, warm friend to me. Farewell. I have never forgotten you.

Good fishing on Mussel Farms

The Industry requests that all boaties taking advantage of better fishing inside Coromandel Mussel farms, please:

- Tie up to the farm and never anchor
- Do not run over any farm structures or ropes
- Do not tie up to and move off any line being worked by a farm vessel
- Always discharge any sewage more than 500m away from the farm



Shirley is second from the right in the middle row. Her sister Patricia is to the left of her (next to the teacher) and their brother Dallas is last on the right in the back row

PENINSULA ELECTRICAL SERVICES LTD

Commercial & Domestic Electrical Contractors



RAVINDER & SUE RAJ

Registered Electrical Inspector

P.O. Box 109

Coromandel

Telephone (07) 866 8166

Free Phone: 0800 4 Electrical (0800 435 328)

E-mail: ravinder@e3.net.nz

1750 S/H 25

Coromandel

Fax (07) 866 8162

Mobile (0274) 738 734

Scott Simpson MP

Happy New Year

Happy New Year. It's great to see so many people still enjoying our glorious Coromandel region and all it has to offer over these summer months.

I'd like to offer a warm welcome to the large numbers of holiday makers and visitors on the Peninsula and around the entire Coromandel electorate.

This is the time of year friends and family gather to celebrate, reflect on the past year, and set projects for the year ahead.

One of those projects, after months of planning, is the start of the Cricket World Cup which we are co-hosting with Australia. The opening match will be against Sri Lanka at the new Hagley Oval in Christchurch on Valentine's Day, 14 February. There will be 40 matches played over 44 days at venues both here in New Zealand and in Australia. We're expecting 30,000 visitor arrivals for the events, which will obviously have a positive impact.

Politically, I'm looking forward to another busy year as the government focuses on the issues that matter to our community and to all Kiwis – a stronger economy and more jobs, better frontline health and education services, and a safer New Zealand.

Although the global situation is now more certain than it was this time last year, there is still a need for strong and stable government, and sound economic management.

We head into 2015 with good economic growth and a more robust domestic economy than has been the case in recent years. More and more kiwis are returning home after spending years offshore. I take that as a good indication they see a bright, optimistic future for themselves and their families here rather than overseas.

I have been elected to chair Parliament's Local Government and Environment select committee. Much of the work the committee will do this year will be focused on further reforms to the Resource Management Act and I know many Coromandel people will want to have a say in that process by way of submissions. I'm looking forward to engaging with as many people as possible to ensure the reforms are meaningful.

But while we are still in the midst of summer, details of the RMA and Parliament seem somehow less relevant than enjoying the delights of the beautiful Coromandel.

So please take care if you are on the roads, in the bush or enjoying the beach. Drive to the conditions, take regular breaks, and make sure you have a sober driver.

Respect the water and weather conditions. Watch kids in or near the water; wear a lifejacket if you're out in a boat, kayak, or on a jet ski; and don't forget to be sun-smart – slip, slop, slap and wrap.

But most of all, just enjoy.



Mana Update

By Penelope Carroll

Happy New Year from the trustees and staff at Mana Retreat Centre. We look forward to seeing you soon at Mana!

There are many ways to enjoy the "Mana experience" in 2015. You can participate in one of the various courses or retreats scheduled for this year (see www.manaretreat.com); book in for a personal retreat; join us on our working bees; volunteer as a wwoofers; come and help (and have fun) in the vegetable garden on our weekly "garden days"; or become part of our "track guardian" team which does a wonderful job maintaining the bush paths crisscrossing the land (contact the Centre for details).

For a great start to 2015, why not book in for one of this month's two-day "relaxation specials" (**7-9 January** and **30 January-1 February**) or our three-day relaxation special over Waitangi weekend (**5-8 February**)? These are a wonderful way to experience Mana. With no set programme you can let the land and just being here work their magic on you.

During these "relaxation specials" there is an invitation to locals to come to Mana for a meal or a massage or to go for a walk on one of our many beautiful bush paths. Please note booking is essential.

Many locals already come regularly to courses, retreats and special events, dance on Tuesdays at Geordie's Open Floor Dance Prayer sessions (**13 and 20 January**), volunteer at working bees, in the garden, on tracks and for special projects (heartfelt thanks to all of our 2014 volunteers!). Others have visited mid-week with walking groups and other social groups and used our facilities for meetings or workshops. If you have never been to Mana, (or just want another opportunity to come) book in for the night or a mini-retreat (a meal, a massage, a walk) during the dates listed above.



Walking on the land at Mana

Mana retreats, workshops, events

Come and have a 'taste' of Mana for a weekend
(prices below incl. food & accommodation),
or a casual meal (\$15pp), a massage (\$80/h) or a walk.

Jan 30-Feb 1 - **Two-day Summer Relax** (\$190pp)
Feb 5-8 - **Three-day Waitangi Day Relax** (\$285pp)

Please ring for details. Bookings essential.

Open Floor Dance Prayer Tuesdays
with Geordie Jahner PhD

Jan 13,20 and Feb 3,10,17 9.30-11.30am, \$15pp

www.manaretreat.com
07 866 8972

Himalaya shop : Colville

OPENING TIMES 10a.m.to 5p.m.

The Himalaya shop will be open 7 days a week during January. We have a great selection of cool lightweight summer clothes. We also have silver jewelry, costume jewelry, home decor items and much more.

Take the stunning drive up to Colville and come in and browse!

Cheers rob and Anette . Phone 07 8666 865

Anette mobile 021 139 7838 Rob mobile 021 155 8559

please note: we have no eftpos, but we can take credit and debit cards!

Heart Beat – St John Ambulance Coromandel/Colville

By Felix O'Carroll – Station Manager Coromandel

St John Coromandel, along with all of our other stations in the Hauraki/Coromandel District, is working to near full capacity as our call-outs increase considerably over this period. We have changed our rosters to try and fit the needs of the area and this has been very successful to date.

Volunteers

Over the last year we have published the need for more volunteers. That still remains the case today and particularly leading up to Xmas where our call-outs more than triple. Many of our own volunteers are at their busiest in terms of their own work commitments hence they are unable to commit to their usual volunteer rosters; this puts more pressure on the station and the remaining volunteers. To help alleviate some of this we have brought in another paid ILS officer (paramedic) to help cover the shifts along with the use of AUT paramedic students out of Auckland to help double-crew our ambulance.

We are however still accepting applications for those wishing to join our organization.

Volunteer applications or all enquiries: Call the station and talk to the duty officer or leave a message on (07) 866 8279 to find out more.

Operations

Coromandel Ambulance along with the whole of the Coromandel District has had its busiest November on record and the trend continues to track upward. With Xmas and the New Year normally our busiest time we are expecting this to continue right into February.

Training and advanced learning

Training commences **12 February**: members of the public are welcome to join us, 7pm start.

Other

Due to compliance issues and delays in getting these signed off, our building programme for the station, targeted for Xmas completion, will now be delayed into the New Year and hopeful of completion sometime in late February or early March.

Be safe out there, stay well and look out for others.

All enquiries
(07) 866 8279

Poetry SPOT

Summer Zephyr

By Beryl Van Donk

As I walk each day I see new growth,
yet silently and stealthily onward
and upward. Bulbs once in darkness
hidden and asleep, leap into new life,
thrusting beauteous flowers to
warmth in the sunlight of your love.
Could my soul be like that? dark
and hidden, then You touch me Lord
and I awaken to the life and warmth
of Your everlasting love.

Poetry SPOT

Dreams

By John Irvine

Dreams are good to have
or so I'm told
I'm talking nocturnal ramblings
and not goals
journeys into memorable madnesses
that seem normal while asleep.

Dreams have meanings
or so I'm told
convoluted messages
from one's subconscious
mélanges of memories
jury-rigged from the pit.
Last night I dreamed a dream
that I wrote dozens of poems
they were piled high on a table
all written on slices of bacon
short poems by necessity
as the rashers were quite narrow.
I wonder what my subconscious
is trying to tell me?

Coromandel Patchwork & Quilters

By Mary Hickman

Our meetings have officially ceased until February – apart from our annual Quilt Show.

I hope many of you will be like “Dorothy” and follow the yellow and red signs.

The signs tell us that the show is being held in the Citizens' Hall, Rings Road, next to the RSA, Coromandel. It opens on **29 December** and shall be open for all to come and see until **3 January** 10am to 4pm.

We have a queen-size “Fractured” Quilt to be raffled which our group all contributed to the making of (this will be on show) and tickets will be available at the exhibition. Tickets are \$3 with proceeds going to help with the Refurbishment of the Citizens' Hall. This raffle will be drawn **16 February**. There will be a sales table too. Thank you to those people who purchased tickets and goodies from our two street stalls held outside Stapleton's of Coromandel.

Pictured is Margaret Syddall, cutting the cake made by Robyn, at our Christmas luncheon at the Pepper Tree.

As I said in last month's issue we had a great year in 2014 and look forward to new friends and challenges this year.

Our meetings 1st and 3rd (& 5th)
Mondays 9.30am-4pm, St John rooms,
Tiki Road, Coromandel. President Jill (07)
866 7484, treasurer Mary (07) 866 8898



Llandem Consulting Engineers

Derek Stewart
C.P.Eng MIPENZ

- Structural
- Civil
- Geotechnical

Ph/Fax: (07) 866 6704
Cell: 027 442 4234

7c Torehina Hts, Waitete Bay



**Coromandel
QUARRY &
Contracting Ltd**

- All grades of metal delivered
- Driveways, roading, earthworks
- Please call for a FREE quote

Telephone 07 866 8306
email: richard@cqc.co.nz

James Drainage '97 Ltd

- Bobcats • Skip Bins • Excavators
- Chaindigger • Septic Tank Cleaning

1.5 to 12
Tonnes



1040 Tiki Road,
PO Box 13,
Coromandel
Phone: 866 8308
Fax: 866 7595
Mob: 021 726 850
jamesdrainage@xtra.co.nz

Come and try our craft beer with a lusty pot of mussels

at the
COROMANDEL
MUSSEL
KITCHEN!



COROMANDEL
MUSSEL
-KITCHEN-



From 27th December Happy Hour
from 4.30pm - 6.30pm, Thursdays and
Fridays: \$5 MK breweries beers!

Saturday 3rd January
Papa Lou band live at
the Mussel Kitchen

Twilight Tapas through January and
February on the weekends

Coromandel
Mussel Festival

Saturday
7th February 2015

See website for details
www.musselkitchen.co.nz

From 27th December we will be open from 9.30am for lunch and dinner
(07) 866 7245 / Corner Manaia Rd & 309 Rd Sh25 Coromandel

Driving Creek Doings No.166

By Barry Brickell

I am not into all this Christmas stuff – it has lost its original meaning, the annual celebration of Christ's birth, celebrated by most Christian churches on 25 December, marked by present giving, family reunions, eating and drinking. My reason for running away from modern day Christmas Day is because it has become so commercialised. Gifting, drinking and eating has become a "godsend" to commercial interests hell-bent on capitalising on people's gullability. This is why I refuse to buy Christmas presents; instead, I prefer to make them as an expression of my natural generosity towards children in particular, who need love and respect rather than cheap entertainment. I see no need to give Christmas presents to adults; it would seem to me a kind of insult. There is no Biblical evidence of the date of Christ's birth. The date of Christmas Day may have been chosen to facilitate the conversion of followers of older religions, many of which held pagan festivals around this time, celebrating the winter solstice (adapted from the Oxford Reference Dictionary). So I make pots or do drawings originating from my own heart as Christmas presents to those whom I feel may value them, a form of communication without words and money. Art is personal, well beyond money. So, on Christmas Day, there is a chance to give kindly of yourself. What a huge amount of packaging and material pollution this would save!

Rod McLeod has spent the last week setting up the next exhibition in our Driving Creek Art Gallery. It is stunning with a display of my recently acquired works, many with gutsy flourishes of paint as well as more considered expressions within NZ contemporary art. The opening coincides with the launch of Lindsay Garmson's book *The Intriguing Story of Coromandel Granite* on Saturday evening 13 December in the Art Gallery

Not much progress on the extended wharf project recently as we wait funding advice from Jacobs Consultants to present to the Council for its meeting on 17 December. The Mayor's support, meanwhile, is much appreciated.

Very merry Christmas indeed. I shall set a good example by keeping off the road and toasting the Almighty. Father Xmas will abandon his heavy red winter garb and dispatch his presents wearing a T-shirt and shorts. It could be hot!

Cheers, Barry

Feeling thirsty? Water or Coke?

Info off the internet – not tested by the Chronicle!

Water amazing facts

- #1. 75% of Americans are chronically dehydrated. (Likely applies to half the world population.)
- #2. In 37% of Americans, the thirst mechanism is so weak that it is mistaken for hunger.
- #3. Even mild dehydration will slow down one's metabolism by 3%.
- #4. One glass of water shut down midnight hunger pangs for almost 100% of the dieters in a University of Washington study.
- #5. Lack of water is the #1 trigger of daytime fatigue.
- #6. Preliminary research indicates that 8-10 glasses of water a day could significantly ease back and joint pain for up to 80% of sufferers.
- #7. A mere 2% drop in body water can trigger fuzzy short-term memory, trouble with basic math, and difficulty focusing on the computer screen or on a printed page.
- #8. Drinking 5 glasses of water daily decreases the risk of colon cancer by 45%, plus it can slash the risk of breast cancer by 79%, and one is 50% less likely to develop bladder cancer. Are you drinking the amount of water you should drink every day?

Coke Amazing Facts

- #1. In many states in the US the highway patrol carries two gallons of Coke in the trunk to remove blood from the highway after a car accident.
- #2. You can put a T-bone steak in a bowl of Coke and it will be gone in two days.
- #3. To clean a toilet: Pour a can of Coca-Cola into the toilet bowl and let the "real thing" sit for one hour, then flush clean. The citric acid in Coke removes stains from vitreous china.
- #4. To remove rust spots from chrome car bumpers: rub the bumper with a crumpled-up piece of aluminum foil dipped in Coca-Cola.
- #5. To clean corrosion from car battery terminals: Pour a can of Coca-Cola over the terminals to bubble away the corrosion.
- #6. To loosen a rusted bolt: Apply a cloth soaked in Coca-Cola to the rusted bolt for several minutes.
- #7. To remove grease from clothes: Empty a can of Coke into the load of greasy clothes, add detergent, and run through a regular cycle. The Coca-Cola will help loosen grease stains. It will also clean road haze from your windshield.

Now the question is, would you like a glass of water, or Coke?

Driving Creek Railway

**Trains will run at 10.15am, 11.30am,
12.45pm, 2.00pm, 3.15pm.**

**For 5 or more adults trains can run at
9.00am and 4.30pm.**

BOOKINGS ADVISABLE – Phone: 07 866 8703
email: railway@drivingcreek.co.nz
www.drivingcreekrailway.co.nz

380 Driving Creek Road, Driving Creek, Coromandel, 3506



Service with a smile

Owner/Operator: Jane Warren

Phone 07 866 8927 Mobile 021 230 5995
Email jane@coromandelcabs.co.nz
www.coromandelcabs.co.nz

MASSAGE THERAPY COROMANDEL



- ★ Deep Tissue Remedial Bodywork
- ★ Relaxation / Swedish massage
- ★ Lymphatic Drainage
- ★ Hot Stones Massage

Lynley Ogilvie, RMT.

Call for an appointment: (07) 8668684 or 021 866868

Steelcraft Ltd

**Precision and general
engineering**

**Steve Norris
Paul Baylis
75 Wharf Rd
Coromandel
Phn/Fax 866 7710**

Rangatahi

CELEBRATING OUR CHILDREN



Coromandel Playcentre

By Claire Swindlehurst

Wow, what an amazing performance our children put on for their whanau at our Christmas party. All their hard work and practice certainly paid off when it came to the opening night of "The life cycle of the butterfly". Not only did the scene and props look amazing, so did our children as they hatched, crawled and transformed into beautiful butterflies with ease, flying around on the stage showing us how amazingly talented they are.

The scenery from the production sparked the inspiration for our float in this year's Santa Parade. Thank you Anna and Jenna for your vision and creativity it looked awesome and our children had a ball getting to be caterpillars again and flying their butterflies.

The children were also excited when room one from Coromandel Area School came over for a brief visit and play when one of the dad's brought a sheep in to shear. The sheep was very well behaved as she sat still while all the children had a pat and felt her wool before and after it was shorn.

We have now finished for Term 4; our first session for Term 1 2015 will be on **Tuesday 3 February**.

Playcentre is for babies and children 0-6 years old. Sessions are term time Wednesdays and Fridays from 9.45am-12.15pm, and Tuesdays from 10.30am-1pm at 80 Woollams Ave (beside the town pool). Playcentre provides a warm and friendly environment for you to play with your child (or grandchild) whilst enjoying the company of others. For info contact Debbie on 021 235 6648



Coromandel Youth Group

Holiday programme at Hauraki House January 2015

Sunday 4 – Drop in & social any age over 5 – 1-4pm.

Monday 5, Tuesday 6, Wednesday 7, Thursday 8 – 11am-4pm.

Friday 9 – Social for years 7/8/9 – 6-9pm.

Sunday 11 – Drop in & social any age over 5 – 1-4pm.

Monday 12, Tuesday 13, Wednesday 14, Thursday 15 – 11am-4pm.

Friday 16 – Social for yrs 7/8/9 – 6-9pm.

Sunday 18 – Drop in & social, any age over 5 – 1-4pm.

Monday 19, Tuesday 20, Wednesday 21, Thursday 22 – 11am-4pm.

Friday 23 – Social for yrs 7/8/9 – 6-9pm.

Sunday 25 – Drop in & social any age over 5 – 1-4pm.

Monday 26 Drop in & social any age over 5 – 1-4pm.

Tuesday 27, Wednesday 28, Thursday 29 – 11am-4pm.

Friday 30 – Social yrs 7/8/9 – 6-9pm.

Saturday 31, Sunday 1 February – Drop in & social any age over 5 – 1-4pm.

Monday to Thursdays you can get creative, get active, play or just chill out.

Coromandel Youth group is for any children over 5 from Coromandel, Manaia, Kennedy Bay, Colville and any outlying areas. All you need to do is fill out a membership form for each child. The entry fee for activities Monday to Thursday is now \$2. If you are coming for the day please bring a packed lunch or you can order hot chips or a pie. You are welcome to come and browse our sale table for a bargain.

Important changes

For the first time in twenty years we have had to raise the entry fee for daily activities to \$2. This is because we have had to decline funding that has been available to us from the Ministry of Social Development since the Youth Group started operating in 1988. This year the Ministry changed the areas it would fund and although we were offered a contract we would not have been able to use the money for our regular activities.

Our committee is working hard to secure funding from other agencies but in the meantime we would appreciate any voluntary donations and a voluntary \$1 fee for after school and weekend sessions.

We would like to thank our funders for making this programme possible: Lottery Waikato, Trust Waikato, COGS and Coromandel Senior Settlement Trust

For a copy of the holiday programme or further information either call in to the Youth Rooms at Hauraki House or phone us on (07) 866 7061

**We now have a solicitor in
Coromandel town every Tuesday**



BRENDA FLAY, SOLICITOR: Travels to Coromandel on Tuesdays.

Please phone the Thames Office (868 8680) for appointments.

PARTNERS: John Jenkison and Hayley Green

Thames Office: 611 Mackay Street, P.O. Box 31, DX GA25514, Thames

Phone: 868 8680 **Fax:** 868 8718 **Email:** pjo@pjolaw.co.nz

Coromandel Office: Tiki House, Tiki Road

Our services:

PLANNING:

PROPERTY:

COMMERCIAL:

Asset protection, estate planning, family trusts and wills

Negotiation and advice on all matters related to the sale and purchase of land, buildings and rural property refinancing. Separations and relationship property

Company formation, sale and purchases of businesses, leases, dispute resolution, employment and related matters.

THAMES

WHITIANGA

COROMANDEL

Rangatahi

CELEBRATING OUR CHILDREN continued

Kiwi Can

"Kia Ora Tatou Katoa" from the Kiwi Can team.

Wow, how fast the year has gone by! We have wrapped up this year's work with a celebration of the tamariki who earned their names into our honours book more times than others, through their fabulous contributions, sporting participation and general awesomeness.

The deserving recipients are:

Coromandel Area School: Room 1 – Jack; Room 2 – Kaila; Room 3 – Kordell; Room 4 – Chaelyn; Room 5 – Lantanna; Room 8 – Logan; Room 18 – Brooke. Colville School: Juniors – Hailey; Seniors – Meadow.

The team then spent the first week of the holidays planning for next term's lessons and preparing for our big national training week coming up at the end of January.

This training serves us well for our leaders coming back to Kiwi Can geared up and inspired by the other Kiwi Can leaders from



all over the country. Just to give you some idea – Kiwi Can operates in 65 schools from as far north as Whangaroa to as far south as Stewart Island. That's a lot of leaders with an abundance of energy and ideas, all networking at national training. We are all looking forward to 2015.

A big "thanks" goes out to Malcolm and Sally Hooker for donating a couch for use in the Kiwi Can room at Coromandel Area School and to Kelly Grice from Richardson's Real Estate for organising this. The room certainly has a more updated look about it now. Thank you.

We are still seeking interested parties to sponsor FYD Kiwi Can Coromandel. Your donation, no matter how small, will be invaluable in continuing this worthwhile and much-loved programme.

Nga mihi nui from Shelley and the team – Marlene, Cody, Jamie Rose, Nadia and Natalie. kiwican@cilt.org.nz



Kiwi Can is managed by the Coromandel Independent Living Trust, officially sponsored by Sanford Ltd and supported by The Lion Foundation, the ANZ Staff Foundation Grassroots Trust, and Driving Creek Railway Ltd



Cody being a big kid out at CAS's year 5/6 appreciation day at The Waterworks



Volunteers' Morning Tea

Coromandel Area School

Equipped For The Future.

E whai ana mō te wā heke mai nei

By Asha Peppiatt



Volunteers' Morning Tea

This special morning tea was held on Thursday 27 November in the Staff Room. It was to thank all those volunteers who work tirelessly to ensure our students get the best education. Their commitment to the school is vital in helping us achieve our goal of providing a safe and challenging education for all of our

students. Thank you once again!

I would also like to thank Karen Morrissey and Janine Niethe, our wonderful office staff, for preparing a delightful array of food for the occasion.

2015 Enrolments, Stationery and Uniform

The school office will be open for new enrolments and any enquiries on **Thursday 29 and Friday 30 January** between the hours of 9am and 3pm. If you wish to make an appointment outside of these times, you can ring (07) 866 8893 ext 208.

Our school uniform is available from The Warehouse in Thames, and stationery lists for next year have been forwarded on to The Warehouse in Thames and Whitianga, Stationery Warehouse in Thames, OfficeMax (see school newsletter) and Coromandel Superette and Stationery.

End of Year 7 and 8 Sport Rivalry

This year, the Year 7's and 8's have had a friendly rivalry with sport. This week we had a play-off to see who was the ultimate sports class. The Year 7's did very well with only half the number of students. After a long multi-sport battle playing basketball, netball and soccer, the Year 8's came out on top winning the new sport trophy. Well done to both classes on fair play and, hopefully, this will continue in the future.



Deidre Airey Literacy Award 2015

The Deirdre Airey Literacy Award is available to assist young people attain their potential in literacy and is open to all schools and home schoolers in the Coromandel – Colville Ward.

Applications for 2015 are now invited and will close on 28 February 2015.

Application forms and criteria details are available from the Coromandel Community Library.

Schools will be individually notified.

Papa Aroha Engineering

Now servicing all makes & models of
Lawnmowers, Ride-on Mowers,
Boat Tractors and Quad bikes

Light Engineering & Machining
Diesel Service

MIKE McCALL • 07 866 8469 • 027 223 7919

1060 Colville Road, Coromandel
Email: mikepapeng@gmail.com

Te Rerenga School Nurturing a community of lifelong learners

By Anna Yates



We hope all of our learners are enjoying a wonderful summer break and enjoying some well-deserved rest, relaxation and, most importantly, fun!

We certainly crammed a lot of learning into 2014 and the last part of term 4 was no exception. We farewelled our three year 8 students Paige, Cember and Caitlyn who left us for the next part of their schooling journey at MBAS. Pepper Tree restaurant, once again, sponsored and accommodated our leaver's dinner and there were a couple



Caitlyn Tinkler, Cember Holzgang and Paige Kopu at the leavers' dinner at The Pepper Tree

of leaky eyes, lots of laughter and more than a few special memories shared. When our leavers depart us in year 8 they receive a special leavers' book containing images filled with memorable moments from their time at Te Rerenga. Cember, Paige and Caitlyn had spent all of their schooling at Te Rerenga so their leavers' books were packed full with the cutest, craziest, funniest photos from a whole eight years of special moments. We wish you three girls all the very best for your education but know we will have frequent visits to hear all of your news.

At the end of term 4 our Room 1 class had had two trips. Every year they enjoy a "walk through Christmas" in Whitianga and this year was no exception. They had a fantastic time wandering through the nativity scenes, and the baked biscuits were extremely popular. Driving Creek Railway generously donated a class trip and our Room 1 students loved every minute. So many children hadn't visited this local iconic tourist attraction and it was so much fun for the children and all of the adults! Thank you Driving Creek Railway team for this fantastic day out... our children were buzzing with excitement.

Room 4 had a great time at Waitomo Caves for their class trip and learned all about glow worms, the caves and took a number of risks on the multitude of challenges offered to them. Room 4 are already asking about



Ellie & Lachlan Mikkelsen on the train at Driving Creek Railway

2015's trip and planning has begun for the camp which will be in term 3 when we travel to Wellington. Every "even" year we have an overnight trip but every "odd" year we take a five-day camp and this year it is to Wellington so that our senior class can experience their capital city while they are at Te Rerenga School.

We are looking forward to welcoming everyone back to school on our first day, **Thursday 29 January** when we will have a transformed school. There will certainly be no down-time at the school over the summer with an incredible new playground installation as well as MOE upgrades to ensure our classes are modern learning environments. The removal of a couple of walls, the internal makeover of Room 2, as well as new sliding doors and covered areas, will all transform our school and make it extremely exciting to return to for 2015.

Coromandel Music Society
presents

BEYONDSEMBLE

Sat 24 Jan 2015
The Mussel Kitchen
Tiki Rd, Coromandel

Gates open 5pm
(for meals and bar)
Concert at 7pm



Tickets \$25, concessions \$20

From Coromandel information Centre - 866 8598
the Mussel Kitchen and gate sales

Arts

Art Group

By Lindsay Nicholls

With the year starting to wind down, activities are starting to wind up it seems. We have in the past few weeks been doing final prep for our paintings to be shown at our exhibition. Last minute frames to fit and mat boards to be cut. Presentation of artwork can either make or break it so careful selection of the right frame and colour to enhance your work is very important to achieve the best look.

Our group project will be on display. It has already been sold, however we feel we should still display it as it is a showcase of our group and what we can achieve with combined efforts. The theme was limited palette white, red, black and any combination they make. We were all given a 6" x 6" square canvas to work on and the theme was up to the artist. We are all very happy with the result and we think it looks stunning. Obviously, so does the buyer! We also would be keen to do another one, if anyone would like to challenge us with a commission.

We look forward to seeing you all at Hauraki House from **23 January to 7 February**. There is free entry to all. We are open at the gallery from 10am-4pm daily. This is the Coromandel Art Group Annual Exhibition. Most of the work will be for sale. You will see the posters up shortly around the town and they may give you a small hint of some of the work available for sale.



Miriam and Chris discussing their artistic options



Coromandel Music Society – Beyondsemble at the Mussel Kitchen

By Robin Münch

After two months of successful touring in Europe, Beyondsemble are returning to Coromandel.

They played at the Bowling Club in 2013 and the audience requested that the Coromandel Music Society invite them back for more. They're a great mix for the Mussel Kitchen where you can eat, drink, sit back and relax with friends, kick off your shoes and dance.

Out of 74 bands, Beyondsemble won the people's choice competition for the right to perform at WOMAD in Taranaki in 2013.

Beyondsemble play an eclectic and diverse mix of tunes and songs, both original and sourced from around the globe, executed with virtuosic skill, innovation, creativity, infectious energy, a sense of adventure and an exuberance of spirit.

If you want a genre, it's World music and Jazz but whatever you call it, it's music to move you and music to make you move.

Band members for this gig are: Craig Denham – Accordion, Piano, Whistles and Vocals; Jon Sanders – Guitar, Bouzouki, Ukulele, Vocals; Darryn Sigley – Cajon, Percussion, Vocals; Nathan Torvik – Mandolin, Guitar, Cello, Vocals.

To remind you of how good they are, go to myPPK.com/get/beyondsemble.

Beyondsemble – **Saturday 24 January**, gates open at 5pm for meals and bar. Concert starts at 7pm. Venue: The Mussel Kitchen – corner Tiki Rd (SH25) and the 309 Rd. Tickets: The Mussel Kitchen, Coromandel Information Centre and at the gate. \$25 full price, \$20 concession.

Coromandel Arts Council – Hauraki House Gallery

By Chris Stark

As we move into summer the gallery moves into its busy season. Labour weekend saw the very successful exhibition of works by Helen Bonica and Allen Beaver.

The Christmas Exhibition, including work by local artist Barry Brickell as well as other invited artists, starts on **Sunday 21 December** and ends on **7 January**. This is usually an exhibition well worth seeing for its variety of work. Erica Lyons exhibition starts on **10 January** and the Coromandel Art Group on **23 January**.

We now have a Facebook page, Hauraki House Gallery, where we hope to post photos and information to those of our followers who use Facebook. If you are a Facebook devotee, pop on over and have a look, become a friend – the more the merrier. We are happy to add anything of interest from those who join up.

Bookings are already being taken for next summer so don't leave it too late if you are intending to use the gallery next year.

Opening of Labour weekend exhibition, Helen Bonica and Allen Beaver





COROMANDEL MARINE ENGINEERING

- Outboard service centre
- General engineering
- Aluminium & stainless welding



Telephone

Workshop:

028 2580 2351

Office: (07) 866 8004

116,309 Road,

Coromandel,

1km from the main road.



The
Lighthouse
Studio

Custom Woodworking,
Persian Rugs, Local Art

75 Wharf Road (next to Coro Pies),
down the Green Lane.

Open 10-4 Tue thru Sat (unless we've "Gone Fishing")
Call: 021-038-0923 for a Rendezvous.
www.lighthouse-studio.co.nz

Environmental

Moehau Environment Group Summer Programme



We've got an exciting line-up for our 2015 Summer Programme, which runs throughout January in the Coromandel, with nature activities for all ages and abilities. To find out what's on, visit www.meg.org.nz/events/2015-summer-programme/ or grab a booklet from the Coromandel Town Information Centre. For bookings phone (07) 866 6903. All funds raised will help with kiwi protection on the Coromandel.

What's coming up?

Cuvier Island Day Trips

8,9,10 January, Port Charles Wharf – A rare chance to explore this usually off-limits, predator free island, observe resident endangered species and learn about the island's fascinating history. Numbers are limited so book quick.

Starlight Cinema

17 January, Waikawau Bay – A crowd favourite. Pack a picnic and come down to watch a family flick outdoors on the big screen.

Bounty Hunters

12 January, Driving Creek Railway – Kids, help us track down some furry intruders that

don't belong in this pest free sanctuary.

Up-Close Kiwi Encounter

8, 9 January, Port Charles – See a kiwi in the wild as it has its 6-month health check. Always popular, so book in quick!

Junior Rangers

4 & 16 January, Waikawau Bay; 6 January, Papa Aroha; 7 January, Long Bay – Bush activities to enthuse kids about our unique plants and animals.

Nocturnal Walk

6, 14 & 25 Jan, Waikawau Bay – Engage all your senses with this after dark tour of nature.

Geocache Treasure Hunt

Throughout January, Coromandel – Follow this multi-cache challenge to some secret spots around Coromandel town.

Kiwi Night Adventure

4, 7 & 22 January, Port Charles – Explore the forest at night. Hear kiwi call and see a kiwi nest.

Meet A Gecko

8 Jan, Driving Creek Railway – See real live geckos up close with lizard expert Doug Ashby.

Headland Walk

11 January, Waikawau Bay – A guided walk of Knox headland, a remnant of coastal forest at the northern end of Waikawau Bay.

Family Fun Run

3 January, Little Bay – This 3.5km course caters for the whole family

Morepork Survey

13 January, Port Charles – Help us count moreporks after dark. You're likely to also hear kiwi call.

Coastal Clean-Up

19 January, Waitete Bay – Help keep our beaches rubbish free, the way they ought to be.

Teach Your Dog To Avoid Kiwi

5 January, Waikawau Bay; 10 January, Te Mata; 12 January, Kuaotunu; 17 January, Tairua.

Any dog can kill kiwi. So get your dogs trained to avoid kiwi in the bush by attending a free kiwi avoidance training session. The training is a simple tool to help reduce the threat dogs pose to kiwi. Training is free and only takes 10 minutes.

If you spend time near the bush get your dog kiwi trained.

Bush Bites

You've all heard of "sound bites", now our MEG trappers want to share some "bush bites" – inspiring encounters with nature they've had while out in the bush.

"Along the stream of one of my trap lines, I heard a couple of hawks overhead. I looked up and one had a rat in its talons. Yeah hawk!"

"I found kiwi poo near trap 10!"

"I had just finished my trap lines for the day, had closed the paddock gate at the end of the line when I noticed something moving in the tall grass. I looked a bit closer and saw a huge female kiwi probing and feeding! I watched her for 20 minutes. Amazing!"

Moehau Environment Group is a non-profit volunteer organisation dedicated to the protection and enhancement of the natural environment of the northern Coromandel. For more info or to get involved please get in touch with Natalie Collicott, MEG Coordinator (07) 866 5337. Email: natalie@meg.org.nz or go to www.meg.org.nz

CLAIM supports Karangahake action

By Lora Mountjoy

Locals in Paeroa and Karangahake are enraged that mining is getting under way in Karangahake under an Exploration consent. An article on the front page of the Hauraki Herald underlined the feeling of people in the area and spelt out the danger posed to water supplies by this development.

CLAIM's chairperson Ruby Powell has taken on the part-time job of Campaign Manager for Watchdog and has been busy helping the local people as they act to stop this totally inappropriate industrialisation of a popular place of natural beauty.

During the past month there have been picnic protests in Karangahake and an Album for the group "Songs for the Mountain" was launched in Paeroa.

We are pleased that a lack of apparent action on local prospecting and Exploration permit sites means Ruby has been free to focus where the immediate threat is and we are offering as much support as we can.

CLAIM member and science teacher Thomas Everth has been looking into the mercury levels of our harbour, something which would be a major factor in mining plans. By the time this paper is published we will know if the Prospecting Permit Seagroup Holdings have over the harbour bed has been extended. We hope they have seen sense and given up attempting to mine our harbour, which is protected under Schedule 4.

This summer CLAIM will be selling our wonderful new t-shirts with the winning Daniel Kirsch design and copies of a popular poster design by Matt Sephton. We will be supporting Karangahake people too and hope to have stalls at local events.

If you want to know more, "like" the "Coromandel Watchdog of Hauraki" or "Protect Karangahake" Facebook pages or check out watchdog.org.nz.

CLAIM, Coromandel Lobby Against Indiscriminate Mining, is a local group committed to protecting our beautiful lands and waters from toxic gold mining. Contact us at claimcoromandel@gmail.com



**new builds - alterations
extensions - fencing
decking - insurance work**

coromandel construction

**reliable, thoughtful, competent, eco-aware
Deborah and Duncan Bayne**

www.coromandelconstruction.co.nz
duncan@coromandelconstruction.co.nz
Phone us on (07)866-7796 or 021-173-7457

Environmental continued

Mercury Toxicity and the Coromandel Harbour development plans

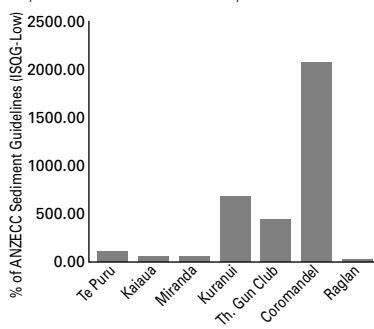
By Thomas Everth

The TCDC's new concept plans for the Coromandel harbour marine facilities around the old wharf were published in the December Chronicle. Unlike Barry Brickel's pier concept, these plans indicate the need for extensive dredging of sediments from well outside of the old wharf all the way up to the current shoreline.

In 2012 TCDC commissioned a report from Pattle Delamore Partners: "Sediment Quality Assessment at Coromandel Wharf" (PDP 2012) which is available from the TCDC website, see references below. The report discovered significant levels of mercury near the old wharf, which would have washed down the rivers from stamper batteries during historic mining operations, when mercury was used for the extraction of gold from ore. The report found mercury levels in excess of 3mg per kg of dry mud in several samples. This is over 2000% of ANZECC Guidelines "Low", where toxic effects in the environment are said to begin, and over 300% above the ANZECC Guidelines "High", above which sediments would classify as highly polluted and dangerous!

The presence of mercury in tidal sediments is problematic. Methyl mercury, a bio-active and water soluble compound and the most toxic form of mercury, is formed there by bacterial action. Methyl mercury passes blood-brain and placenta barriers and damages the nervous system, where it can debilitate intellectual and learning capacities and sensory acuity or worse. The unborn and children are especially at risk. Fish high on the food chain, such as snapper and shark (Lemon Fish), as well as tuna, kingfish, eel and flounder, can bio-accumulate significant amounts of mercury in their lifetime and those who consume contaminated seafood regularly are especially at risk. But despite the knowledge of this environmental threat, no comprehensive study of the true geographic extent and fate of mercury in the ecology and food chain of our harbour has been undertaken. For all we know, the few samples taken by Pattle Delamore in 2012 may just be the proverbial tip of the

Mercury in Coromandel Harbour and the Firth of Thames sediments compared to Raglan. T. Everth based on (Hume, Dahm, 1991) and Env-Waikato, Pollutants in Sediments. Updated Coromandel Values as per TCDC Pattle Delamore report 2012.



iceberg. What would ensue if these sediments are churned up and dredged is uncharted territory. The status quo however, is not attractive either. The mercury legacy in our harbour is likely constantly leaching out of the sediments in form of highly toxic methyl mercury into our food chain and will continue to do so for a long time to come.

The first duty of care of the TCDC and the Regional Council should be to the safety of our kai moana and the well-being of those who consume it regularly or depend on it for economic reasons. Before ratepayers'

or investors' funds are committed to a development that is predicated by extensive dredging, the matter should be investigated to its full extent by impartial scientists. Only then would our community and our elected representatives be in a position to give due consideration to the consequences of their plans. A comprehensive study commissioned by Environment Canterbury into the heavy metal contamination in fish and shellfish in the Christchurch estuary in 2012 (ECAN 2012) is an excellent example of what is required here (see references).

In 2013 New Zealand became a signatory to the international Minamata Convention, named after the Japanese harbour town where the world's most horrific case of industrial mercury contamination occurred. The Convention obligates nations to safeguard the environment against the release of mercury. Let us hope our authorities understand their legal obligations under this treaty!

References: PDP 2012: Pattle Delamore, Sediment Quality Assessment at Coromandel Wharf. TCDC: <http://bit.ly/1vEzCMN>. ECAN 2012: Heavy Metals in Fish and Shellfish. ECAN: <http://bit.ly/1vEAWJl>. Minamata Convention: <http://www.mercuryconvention.org/>

Coromandel Kiwi Project

By Jeff Williams

The Coromandel Kiwi Project has been protecting kiwi in the Coromandel hills since 2011. We do this through trapping of stoats.

The main threat to kiwi populations on the mainland is predation by introduced mammals, especially stoats, feral cats, ferrets, and roaming dogs. Kiwi chicks are especially vulnerable to predation until they reach a weight of 1kg at 6-8 months old when they can defend themselves better against stoats and cats. By removing (or at least reducing) stoats from a local environment, the impact of predation can be reduced and kiwi populations may stabilize or begin to recover [Bird Conservation International, DOI: 10.1017/S0959270912000044].

In rough numbers, we kill about 60-70 stoats each year in the Coromandel Kiwi Project. In the same period about four times as many rats end up in the traps. This is a good news/bad news scenario: yes, it's good to take the rats out of the bush as well, but a sprung trap cannot catch a stoat and so it may represent a lost opportunity in that regard.

We have 170 traps through the hills and each trap needs to be serviced monthly by a volunteer in order to be effective. In the summer months we would like to service traps twice-monthly, but lack the volunteers to do so. Trapping also obviously requires a certain amount of track maintenance to be effective – more work in the bush carried out by volunteers from around Coromandel town.

We could use your support, even if only for a day or evening! If you would like to take action to support local kiwi protection efforts, please contact us at CoromandelKiwiProject@meg.org.nz

Gaia
DECORATORS

The Professional Finish For Every Building
Painting • Specialist Finishes • Wallcovering
Colour Consultation

Mark Gaia Free Quotes

021 2955532 Residential • Commercial

@ coromandel 07 866 7485

JOHNSTON FENCING

**FOR FENCING, DECKS,
RETAINING WALLS**

PHONE ROSS 021 395 900

New Chum Beach – latest news

By Rosemary Stone, Preserve New Chum for Everyone

At the time the Chronicle went to print, TCDC was not ready to receive submissions from the public on the proposed housing development at New Chum beach. However, it is expected that an announcement will be made within the next week or so. If you would like to have your say on the development, keep checking Facebook groups “New Chum – Save Our Beach” and “Preserve New Chum For Everyone”, keep an eye on the website www.preservenewchum.org.nz, or email newchumforeveryone@orcon.net.nz to join the email database. Once the 20-working-day public submission period begins, the website will be updated and will contain information about the development and user-friendly instructions on how to make a submission to TCDC.

Peninsula Project Update

By John Veysey

When Environment Waikato counted the number of possums in our sector, phase 3 of the Peninsula Project, in 2011 they found more than 13% possums and began planning another possum control operation like the one they gave us in 2007 which cost over \$600,000.

In 2007 all “consenting” private properties were subjected to a poisoning operation “managed” by DOC. Bait-stations were banged into trees, filled with poison, and then left to rot. Many landowners had to witness the slow deaths of possums, as some possums wandered around in a daze for three weeks before dying.

When, three years later, EW threatened to do this all over again our Coromandel/Colville Community Board questioned the need for it. In the first place the board wished to protect landowners from an intrusion which may be serving little purpose. Just how much extra possum control was really necessary for the area? The Community board suggested that EW leave us alone for a couple of years to find out what would happen if private landowners were left to handle their own possum control without any council interference. The funds intended for a council operation in 2012 were put towards DOC’s 1080 operation in 2013.

In August 2014 council monitored our possum numbers again. They found that throughout the private lands the average number of possums had fallen to 5.5%. Only two of the twenty-one lines exceeded 10%.

Being able to keep the numbers below 6% all the time is clearly a better way to deal with the possum invasion than council doing an operation once every few years and then allowing the numbers to increase into the teens before doing anything about it; a method referred to as “farming”.

Between 2011 and 2014 our possum control has been carried out completely voluntarily. There has been no funding from anyone. The 5.5% result is simply the result of private landowners, interested in protecting their own lands, doing what needs to be done and keeping at it. We are hopeful, now they have their own figures to prove it, that council will understand that because two properties might need help there is no need to extend that help to the other nineteen landowners who are doing a perfectly good job without any help from council. If council can adapt their method to accommodate this we could see a saving of \$100,000 a year. We will keep pushing council for a sensible solution.

The cool October/November may be responsible for the good quality fur we are still getting. This week’s figure of 16.7 possums to the kilo is very good for December. Usually it is over 20 possums to the kilo at this time of year.

101 MUST-DO'S FOR KIWIS
Voted #20
On the 101 Must-Do's For Kiwis List



Voted best theme park in NZ!

Voted #1 in THE COROMANDEL good for your soul competition



The Waterworks is an experience like no other 70+ attractions to look at, play on or interact with.

Water Cannons, Water Bikes, Flying Fox, Human Hamster Wheel, Giant See Saws plus loads more.

Cool down in our natural Swimming Hole and 'walk the plank' off our dive board.

Go crazy in our jumbo sized adventure playground.

Indulge on excellent food and coffee from our onsite café or bring a picnic and enjoy free use of our BBQ's.

Say goodbye to the long drops! Brand new toilet block open this summer.

Bring the whole family! The Waterworks is dog friendly, wheelchair accessible and suitable for all ages.

Open 7 days from 10am to 6pm. Only 10 minutes from Coromandel Town on the newly sealed 309 Road!

07 866 7191

www.thewaterworks.co.nz

Sport

Fishing Club

By Lindsay Nicholls

The Fishing Club Christmas party went well with yummy food, good fun and Santa arriving on time with a big sack of presents. All the kids behaved so well, they must have because they all went away with a pressie and smiling faces.

We also had our prize giving and pin presentation. Well done to our winners.

Fish of the month for December is trevally and January is snapper. November's winner of fish of the month will have to wait a bit longer as the Chronicle went to print before we got the results in.

Subs can still be paid for the club at Fish and Dive or Wyuna Studios.

Only \$40 for an individual or \$75 a family.

Next date for competition **Sunday 25**

January. Entries will be available soon from Fish and Dive.

Hope your teams are all organised for Ladies Classy Chicks held on **7 March**, with Admirals Arms as our prize venue. Team prizes for best dressed and skippers draws are all up for grabs.

We would like to remind everyone ..to fish safely and remember the limit sizes and numbers.

We fish you a merry Xmas, we fish you a merry Xmas. We fish you a merry Xmas and a snapper New Year!

Coromandel Gymnastics Club Update

By Anne Loudon

Our final event for 2014 was a display evening; a good chance for the young gymnasts to show off their skills to friends and whanau; we'd like to thank everyone that came along and got involved and congratulations to those that received prizes. 2014 was a great year, hosting the inaugural Upper Peninsula Gymsport competition and seeing our kids going off and doing well at Regionals. It's really great how much the kids have all improved and the prize giving evening was a great chance to acknowledge that.

Welcome to 2015 and the beginning of a new year for our Gymnastics Club. Term 4 of 2014 was challenging in that there were evenings when we couldn't get into the gym and our coaches and committee were facing some challenging times. We have decided to make a few changes to how we run sessions this year, namely we will only be running gym club over term 2 and 3 of this year so as to avoid the craziness of summer in Coromandel where a lot of our volunteers are working extra shifts, running businesses, etc and also to give our people a break and time to consolidate and plan for the longterm future of the club.

We are looking at running one group only, from 4.30-6pm for 7+-year-olds (and any exceptionally talented 6-year-olds) and we hope to also offer a play gym group for 4-6-year-olds but a lot is dependent on coach availability and training. We are hoping to introduce some workshops and training sessions, working with GymSports NZ to help develop the club's knowledge base over the first part of the year and we will bring you more information as this comes available. This is an exciting time of development for our club and we are looking for more parents to get involved and help share the workload. In our community we all have special strengths and we'd like to attract more of these to our group. It's great to have Yvette Storey and Jo Scott join our team, especially since several of our committee are less available this year and we need more help! This is integral to the future of our club.

If you are keen to help out, make contact with Jessica Dziwulska, our chairperson on thegreatcreate@gmail.com

Coromandel Swimming Club January update

By Debra Attwood

Swimming Club is still operating during the holiday period with many swimmers participating on our regular sessions on Monday, Wednesday and Friday evenings.

Learn-to-swim classes have been very popular so if you want your child to learn to swim book them in early for the next course. There are lessons starting on **5 January** and then again on **9 February**; enrolment forms can be collected from the community pool any day.

Our competitive swimmers attended the Tokoroa Classic swim carnival and they continue to improve on their personal best times and they are breaking club records as well. The meet was attended by Sheridan O'Keefe who achieved four personal bests and three club records; Hineariki Lewis – one personal best (and her first ribbon); Briar O'Keefe – two personal bests; Kaiya Kerrison – three personal bests, and Anna Stevenson three personal bests. What a great achievement keep up the training and good luck for your next meet – the Pre-Christmas meet in Hamilton, a large three-day event with over 385 swimmers.

Check out the Facebook Coromandel Swimming Club page for more details about events and results

Coromandel Community Recreational Society Trust Waikato Events Centre (Community Swimming Pool Complex)

By Debra Attwood

The pool is now open to the public for swimming. Our morning swimming is going well and we are open for business every day. Come along and try swimming; it is a great way to wake up and get going in the morning swimming or walking a few laps in the pool. Over the summer holidays it is a great place for the children and adults to spend the day, swimming and enjoying the company at pool complex.

Learn To Swim Classes

Register now for your learn-to-swim lessons which start **5 January**, call in and collect a registration form from the pool. These classes will begin with a week block course, four days a week and will be held in the mornings between the hours of 9am and 11am. The following four lessons will be held in the afternoon after 3.30pm. Cost \$50 for eight lessons.

Also if you are interested in private one-on-one learn to swim lessons these can be organised at a time to suit. Call in and see Debra for further information or give her a call on (07) 866 7660 or 027 348 2400.

Pool Hours until 1 February

Mornings: Monday – Friday 6-8am. Daily: 12-5pm. Tuesday & Thursday afternoons 5-6pm lane swimming only.

Entry costs: Adults \$3.50; Students and seniors \$2.50; Preschoolers 0-5yrs \$1; Spectators \$1. Concession cards are available as well call; in to the pool and check out the great deals.

Check out our Facebook page (Coromandel Community Swimming Pool) for up-to-date information and upcoming events.

Remember we have solar heating installed at the pool; this greatly helps to heat up the pool and to maintain that warmth.

If you are looking for a venue to hire for a day, night, afternoon our hall is available contact Debra Ph: 866 7660, mobile 027 348 2400 or email debmark62@hotmail.com



866 8635

See meeting list for class times

Coromandel Bowling Club Newsletter - January 2015

"Just Awesome" - say our Twilight Bowlers

December 9th saw our final night of our Twilight bowls held for 7 consecutive Tuesday evenings. The teams of four played in the rain and they played in glorious sunshine and had a terrific time each Tuesday. Teams were made up from the Fire Service, Day Care, our Posties, Budget Service, Oyster Farm, Driving Creek Railway, Fish & Dive, 2 teams from 4 Square, the Mussel Kitchen, Richardsons Real Estate, the RSA, 2 teams from the Gym and the Ambulance team. They all came each Tuesday evening and played competitive bowls. It didn't matter if the bowling wasn't too flash, it just added to the great fun and everyone had a brilliant time. Each evening was rounded off with a sausage sizzle and prizes given for each team's best player on the day. For the final night as usual bowls were played in fancy dress to finish off the 7 week tournament in style. So if you want to join in the fun next year we will be starting Twilight Bowls again in October 2015.

Saturday Bowls - Free Tuition. For non-members and members wanting a relaxed informal game of bowls, do come along at 1:00pm \$5 non-members. We play for about 90 minutes. If you are new to the game we will give you some quiet relaxed tuition that will get you going and make you feel confident. It is a great game for your health and mind and lots of fun..

RSA Amalgamation - Both Clubs have agreed to go ahead with the idea, and the real hard work starts in working out the details of how we amalgamate, and what both clubs will agree to. This work is done by sub-committees from each club working together and will take several months. We wish them well and success.

Veggie Show – So how are the vegetables, pickles and flowers coming along? Struggling with all the changeable weather probably. But keep in mind that date 14th February 2015 of the Vegetable and Produce Show at the Bowling Club. Entry Forms/rules/schedule are available at the Information Centre. Final details will be in the February Chronicle.

The Bowling Club would like to thank Street Smart for their help in clearing recyclable material from the club at especially busy times. Their help is greatly appreciated

Contacts

Martin - 866 8886 email: quail1352@gmail.com
Maureen - 866 8282 email: maureenk556@gmail.com
Graeme - 866 7931 email: grandiegoss@yahoo.co.nz



Twilight Tournament winners
– Fire Brigade



Twilight Tournament best dressed team
– Four Square as the Ninja Turtles



Mens Champ 4s - left to right
Barry Paterson, Reg Wright, Malc Burgess, Ray Yearbury

Sport continued

Spirit of Coromandel Trust Update

By Debra Attwood



If getting fit is one of your New Year's resolutions then we have several challenges for you. Now is the time to start your training for our upcoming events: for the very adventurous there is the ARC Adventure Race 24/12/8hr on **14-15**

March, or later in the year the K2 cycle race with the many different distances to challenge everyone, or the Great Cranleigh Kauri Run where here you can also help the conservation effort to restore the mighty kauri tree to the Peninsula.

The Great Cranleigh Kauri Run

The Cranleigh Kauri Run was held in late November with competitors from New Zealand and overseas including USA, Israel, French Polynesia and Australia. The day began with a few showers but fined up for most of the events.

The gruelling 70km Ultra was once again won by Kerry Suter from Cambridge in 7 hours 04.17 with the next competitor Josh Dyke from Australia in 8 hours 31.38. The women's section was won by a former Colville resident Meg Buddle who finished in 10 hours 39 minutes. Well done Meg to be the only woman to complete the whole course.

The 32km Classic was won by Andy Palmer in 2 hours 56.17 with our local runner Alan Stewart finishing in 4 hours 39.54. The women's section was won by Katy Dawson from Cambridge in 3 hours 11.41.

The Demi Marathon 23km was won by Colin Earwaker from Rotorua in 1 hour 58.50, with local runner Mark Attwood finishing in 2 hours 50.34. The women's section was won by Katrina Madrill from Auckland in 2 hours 29.45 with our locals Natalie Munns and Megan Andrews finishing in 3 hours 22.35. The walking section was won by locals Raine Williams and Sarah Ford in 3 hours 59.15. Well done guys, a great effort.

The 13km Crossing was won by 17-year-old Matthew Scott from Hamilton in 1 hour 03.15 with Rhonda Parry also from Hamilton winning the women's section in 1 hour 32.45.

Each year the Spirit of Coromandel Trust plants a kauri tree along the trail for every competitor that takes part and they undertake to maintain the trees in the important first few years of growth.

To date 2,389 kauri have been planted, covering a distance of 8km; these can be seen at the beginning of the Waikawau trail.

If you are not a cyclist or a runner but would still like to be involved, you could volunteer to help marshal at one of our events. This is a great way to be part of the team. All of our events require marshals to assist in many ways.

For entry details and more information check our website www.arcevents.co.nz

Classifieds

Cost 30 cents per word – please drop the ad and payment (cash or cheque) into Richardsons Real Estate, Coromandel or you can email your words to corochronicle@gmail.com and I will give you my bank details to direct credit.

PROFESSIONALS

ABBY'S HEALING HAVEN. Therapeutic massage and organic skincare at the Lions Den Hostel www.lionsdenhostel.co.nz (07) 866 8157 Abby 021 352 486.

ARE YOU THINKING of having those needed jobs done? Whether it be Carpentry, Decorating, Tiling, I can give you advice and a free quote. Call Vaughan on (07) 866 7969.

BROKEN GLASS? Call Mike Coromandel Glass (07) 866 8869.

CARPENTRY: Windows, Doors, Decks, Kitchens. Sound Tradesman. Free Quotes. Vaughan Udall (07) 866 7969.

CLASSICAL HOMEOPATH Nicole McCauley. For appointments call 021 172 7583.

CLEAN UP - CLEAR OUT, Give GO GIRLS a shout! Cleaning, gardening, lawns & weed eating, give our skills a test let GO GIRLS do the rest. Phone Lizzie (07) 866 8810/021 148 5261.

COMPUTER SOLUTIONS. Microsoft Certified Systems Engineer with over 15 years of IT experience providing solutions and support service for PCs, Laptops, Printers, Wired and Wireless Networks, Virus and Spyware removal, Data Protection and Recovery. Up gradations, Consulting, Design and Training. Contact: Dheeraj Bali Ph (07) 866 7550 Mob 021 207 1341 E-mail: dbali@vodafone.co.nz

COROMANDEL THERAPEUTIC MASSAGE. Lalita Morrison - Dip. Therapeutic Massage (RMT) - offers Relaxation, Remedial and Deep Tissue Massage, Reflexology and Reiki. Personalised treatments tailored for you. Clinic at Coastway Cutters, 100 Kapanga Rd, Coromandel. Appointments 7 days on 0274 918 932 or (07) 866 7474.

ELECTRICIAN, REGISTERED, Steve Garmey, 17 Puriri Place, Tuataewa, (07) 866 7669, 021 0244 0002.

"FOR TREES" PETER NOVIS, climbing specialist, felling, topping, pruning and chipping. Fully insured. Phone (07) 866 7861, 027 636 3253.

HOME AND BUILDING MAINTENANCE. Contact Tony Burton 0800 024 874.

KARDO NATURAL HEALTH. Your support naturally with Shiatsu, Massage, Naturopathy, Herbal Medicine & Bach flowers. Ness Mack (BNatMed, Dip Tao Shiatsu), Colville Community Health Clinic or your own space Colville – Coromandel area 021 0228 5266 shiatusuanessa@yahoo.co.nz.

MEDICINE WOMAN Plant Spells available at Abby's Healing Haven 021 352 486, (07) 866 8157. Formulations for personal transformation by medicine woman Franchelle Ofsoko-Wyber, a genuine matakite.

MUSIC RECORDING Record your original music. Produce a single, a demo or full length album. 10 years' experience recording and mixing music to a professional standard. Matt Sephton, 021 043 8689, www.corosoniclab.co.nz, matt@corosoniclab.co.nz

ORGANIC SKIN COMPANY. Calendula cream and face care products for sale at Abby's Healing Haven. Stockist for River Veda organic perfumes, lipsticks, make-up and organic skincare. Organic facials available. 126 Te Tiki St, Coromandel (07) 866 8157.

PAINTING AND WALLPAPERING: Neat tidy work. Free Quotes. Vaughan Udall (07) 866 7969.

RANCH SLIDER WONT SLIDE? Call Mike Coromandel Glass (07) 866 8869.

SUMMER IS HERE: Jobs to be done! Phone Vaughan Udall for a free quote (07) 866 7969.

THE LIGHTHOUSE STUDIO: Joinery/ custom woodworking, furniture, Persian rugs and LOCAL ART. Between Coro Pies and Morrissey Automotive, down the green lane. 75 Wharf Rd 021 038 0923.

TILING: Wall and floor tile laying service. High standard of work. Free quotes. Vaughan Udall (07) 866 7969.

WINDOW CATCH BROKEN? Call Mike Coromandel Glass (07) 866 8869.

TREESHAPES. Qualified Arborists for all treework, chipping, stumpgrinding, hedges, section clearance, free quotes. Phone 0274 726 627.

WORK WANTED

ANYTHING CONSIDERED, Ph Jo Notman (07) 866 8074.

TREE SERVICE. Dismantling or pruning. Free quotes. Call Jeremy Haszard (07) 866 0118.

TREESHAPES. Qualified Arborists for all treework, chipping, stumpgrinding, hedges, section clearance, free quotes. Phone 0274 726 627.

FOR HIRE / RENT

SOUND SYSTEM HIRE. For any event - weddings, funerals, parties, concerts. Powerful and clear sound. Matt Sephton 021 043 8689 or check www.corosoniclab.co.nz/rates.

MOORING FOR RENT Near Hannaford's Wharf, Te Kouma, up to 20 tonne 50ft boat. \$25 a week. Ph Thomas 027 5947 133.

FOR SALE

COROMANDEL FIREWOOD SUPPLIES quality wood at affordable prices t-tree and pine free local delivery phone or txt ezra on 022 0860 927.

NOW SELLING NATURAL INTERIOR AND EXTERIOR OIL for wood. Made in NZ by the Naturalhouse Company. Excellent product, easy to use. Available from The Lighthouse Studio, 75 Wharf Rd ph 021 038 0923.

SITUATIONS VACANT

MOEHAU ENVIRONMENT GROUP is seeking to employ fit, keen conservation workers for field position based near Colville. Tasks include track-cutting, trap-box replacement and possum/rodent control. Call Lettecia on (07) 866 6626 if interested.

Coromandel Town weekly and monthly meetings

Every Monday

Coro Gym – aerobics, Charles St, contact Peg (07) 866 8635.....8am
 Mahamudra Centre, guided meditation-in Gompa, contact (07) 866 6851..... 8-8.30am
 Coromandel Hikers Group, Hauraki House, contact Don & Anne (07) 866 8885.....9am
 Colville Social Services Collective, Colville Hall, contact (07) 866 6920..... 9am-3pm
 Kohanga Reo o Kapanga, contact (07) 866 8417..... 9am-3pm
 Coro Gym – sit and be fit, Charles St, contact Peg (07) 866 8635..... 9.30am
 Aerobics low-high xtrng KiwiCan rooms, contact Evy (07) 866 8242..... 5.15-6.15pm
 Coro Gym – boxing/aerobics, contact Marty (07) 866 8635..... 5.30-6.15pm
 Shrinking Violets, contact Betsie (07) 866 7076..... 5.30pm
 Coro Contract Bridge, Coro Ambulance rooms, contact Natalie (07) 866 8422.....7pm
 Four-part harmony singing, contact Sue (07) 866 8833.....7.30pm

Every Tuesday

Homeschoolers gathering, contact Julene (07) 866 8005.....
 Mah Jong, contact (07) 866 7580.....
 Mahamudra Centre, guided meditation-in Gompa, contact (07) 866 6851..... 8-8.30am
 Colville Bay Early Learning Centre, rear Colville School, contact Alex (07) 866 8319.....9am-3pm
 Coro Walking Group, Hauraki House car park contact Janine (07) 866 7660 or Joy (07) 866 7762.....9am
 Swissball Training – Hi-Tech Health & Fitness, contact Marlene (07) 866 8019..... 9am
 Colville Social Services Collective, Colville Hall, contact (07) 866 6920..... 9am-3pm
 Kohanga Reo o Kapanga, contact (07) 866 8417..... 9am-3pm
 Music & Dance, Elim Church, contact Teresa (07) 866 7511..... 9.30-11am
 Coro Ladies Golf, Hauraki Rd, contact Peter (07) 866 7633.....tee off 10am
 Yoga, Colville Hall, contact (07) 866 6612..... 10am
 Croquet, Woollams Ave, contact Judy (07) 866 8637..... 9.45am
 Narcotics Anonymous meeting, Havalona Centre, contact 021 314 467..... 12 noon
 500 card session at the Bowling Club, contact (07) 866 8886.....1pm
 Coro Cub Scouts, Scout Hall, Hauraki House, contact Abby Morgan 07 211 9790 .. 4-6pm
 Aerobics non-impact cross training & stretching KiwiCan rooms, contact Evy (07) 866 8242..... 5.15-6.15pm
 Coromandel Ambulance training, Ambulance Station, contact Felix (07) 866 8279.....7-9pm
 Coro Motorcycle Club, Star & Garter, contact John (07) 866 6776..... 7-9pm
 Swissball Training – Hi-Tech Health & Fitness, contact Marlene (07) 866 8019..... 7pm

Every Wednesday

Dharma Gaia, Meditation, contact (07) 866 7995..... 6-7am
 Dharma Gaia, Sitting & Walking Meditation, contact (07) 866 7995..... 7.30-9pm
 Coro Gym – aerobics, Charles St, contact Peg (07) 866 8635.....8am
 Rudolf Steiner Kindergarten, Rings Rd, contact Anna (07) 866 7794..... 8.30am-1.30pm
 Rudolf Steiner Playgroup, Rings Road, contact Anna (07) 866 7794..... 8.30am-1.30pm
 Mahamudra Centre, guided meditation-in Gompa, contact (07) 866 6851..... 8-8.30am
 Colville Bay Early Learning Centre, rear Colville School, contact Linda or Alex (07) 866 8319.....9am-3pm
 Colville Social Services Collective, Colville Hall, contact (07) 866 6920..... 9am-3pm
 Kohanga Reo o Kapanga, contact (07) 866 8417..... 9am-3pm
 Coro Gym – sit and be fit, Charles St, contact Peg (07) 866 8635..... 9.30am
 Coromandel Playcentre, Woollams Ave, contact Debbie (07) 866 7119 .. 9.45am-12.15pm
 Coro Gym – body sculpt, Charles St, contact Georgia (07) 866 8635..... 10.15-11.15am
 Tai Ji, Top Floor, Waikato Events Centre, contact Sol (07) 866 8971..... 10.30am
 Coromandel Golf Club – mens, Hauraki Rd, contact Peter (07) 866 7633 .. tee off 12.30pm
 Scrabble Club, contact Joan for venue on (07) 866 7580.....1pm
 Coro Tennis Club – club night, Tiki Rd, contact Gayle (07) 866 8063.....4pm
 Wing Chun Kung Fu- Hong Kong Style, contact Chi Sau Club 027 283 0773.. 4.30-8.30pm
 Aerobics – hi/low, KiwiCan rooms CAS, contact Evy (07) 866 8242..... 5.15-6.15pm
 Running Group, meet at rugby club grounds.
 Contact Mark 027 338 6697 or (07) 866 7660..... 5-6.15pm
 Coro Gym – step/LBT, Charles St, contact Georgia (07) 866 8635..... 5.30-6.30pm
 Circuit Training – Hi-Tech Health & Fitness, contact Marlene (07) 866 8019..... 7pm
 Yoga, Events Centre (behind 4 Square) \$8, contact Jessica (07) 866 8405..... 7-8.30pm
 Discussion night-optional pot luck dinner, Mahamudra Centre, contact (07) 866 6851.....dinner 6pm, meeting 7-8.30pm
 Walking & sitting meditation, Dharma Gaia Centre, contact (07) 866 7995..... 7.30-9pm

Every Thursday

Mahamudra Centre, guided meditation-in Gompa, contact (07) 866 6851..... 8-8.30am
 Rudolf Steiner Kindergarten, Rings Rd, contact Anna (07) 866 7794..... 8.30am-1.30pm
 Rudolf Steiner Nursery (<3's), Rings Rd, contact Anna (07) 866 7794..... 8.30am-1.30pm
 Coro Walking Group, Hauraki House car park contact Janine (07) 866 7660 or Joy (07) 866 7762.....9am
 Coro Art Group, St Andrews Church, contact Val (07) 866 8911..... 9am-12pm
 Colville Bay Early Learning Centre, rear Colville School, contact Linda or Alex (07) 866 8319..... 9am-3pm
 Kohanga Reo o Kapanga, contact (07) 866 8417..... 9am-3pm
 Coro Community Garden, Glover St, contact Louis (07) 866 8866..... 2-4pm
 Service of the Word & Holy communion, St Colmans church, contact Jocelyn (07) 866 7126.....5pm
 Beginners Yoga with Becks, at Coro Gym, \$5, all welcome. Contact Becks 027 407 0079.
 Last class for 2014 is 11 Dec, restart Feb 2015..... 5.15pm to 6.30pm
 Aerobics – step only, KiwiCan rooms CAS, contact Evy (07) 866 8242..... 5.15-6.15pm
 Swissball Training – Hi-Tech Health & Fitness, contact Marlene (07) 866 8019..... 7pm
 Quiz Night, Admiral's Arms, contact (07) 866 7069.....7pm

Every Friday

Circuit Training – Hi-Tech Health & Fitness, contact Marlene (07) 866 8019.....6am
 Coro Gym – aerobics, Charles St, contact Peg (07) 866 8635..... 8-9am
 Colville Bay Early Learning Centre, 3-4 yr olds, rear Colville School, contact Linda (07) 866 8319..... 9am-3pm
 Rudolf Steiner Kindergarten, Rings Rd, contact Anna (07) 866 7794..... 8.30am-1.30pm
 Rudolf Steiner Nursery (<3's), Rings Rd, contact Anna (07) 866 7794..... 8.30am-1.30pm
 Mahamudra Centre, guided meditation-in Gompa, contact (07) 866 6851..... 8-8.30am
 Colville Bay Early Learning Centre, rear Colville School, contact Linda or Alex (07) 866 8319..... 9am-3pm
 Kohanga Reo o Kapanga, contact (07) 866 8417..... 9am-3pm
 Yoga for everyone, Anglican Church Hall, contact Katie (07) 866 6612..... 9-10.30am
 Colville Services Collective, Colville Hall, contact (07) 866 6920..... 9am-3pm
 Coro Gym – sit and be fit, Charles St, contact Peg (07) 866 8635..... 9.30-10.30am
 Coromandel Playcentre, Woollams Ave, contact Debbie (07) 866 7119..... 9.45am-12.15pm
 Coro Tennis, Men's night, contact Gayle (07) 866 8063.....4pm

Every Saturday

Mahamudra Centre, guided meditation-in Gompa, contact (07) 866 6851..... 8-8.30am
 Coro Tennis Club – juniors, Rings Rd, contact Gayle (07) 866 8063.....9am
 Croquet, Woollams Ave, contact Judy (07) 866 8637..... 9.45am
 Coromandel Golf Club-club play, Hauraki Rd, contact Peter (07) 866 7633tee off 12.30pm
 Coromandel RSA, contact Ian (07) 866 7138 (winter 1st, 3rd & 5th Sat only)..... 4-10pm
 St Colmans Catholic Church-mass, Rings Rd, contact Keith (07) 866 8613 or Jenny (07) 866 7787.....5pm
 Prayers for dead and healing, Mahamudra Centre, contact (07) 866 6851..... 5-6pm

Every Sunday

Mah Jong, contact (07) 866 7580.....
 Mahamudra Centre, guided meditation-in Gompa, contact (07) 866 6851..... 10-10.30am
 Aerobics – step combo, KiwiCan rooms CAS, contact Evy (07) 866 8242..... 9-10am
 Elim Church Services, Rings Rd, contact Steve (07) 866 6900..... 10am-12 noon
 Coro Tennis Club-club play, Rings Rd, contact Gayle (07) 866 8063.....2pm
 Swissball Training – Hi-Tech Health & Fitness, contact Marlene (07) 866 8019.....2pm
 Circuit Training – Hi-Tech Health & Fitness, contact Marlene (07) 866 8019.....4pm
 Prayers for dead and healing, Mahamudra Centre, contact (07) 866 6851..... 5-6pm
 Alcoholics Anonymous meeting Anglican Church Hall, contact 021 314 467.....7.30pm

Monthly

1st Mon – Coro Patchwork & Quilters
 Ambulance rooms, contact Jill (07) 866 7484.....9am-4pm

2nd Mon – Friendship Group, contact Jocelyn (07) 866 7101

3rd Mon – Coro Patchwork & Quilters
 Ambulance rooms, contact Jill (07) 866 7484.....9am-4pm

3rd Mon – Alzheimer's Carers' Group,
 Retirement Village Hall, bring plate & koha, contact (07) 282 0453, (07) 866 8653.....10.30am

1st Tue – Coro Motorcycle Club general
 business John (07) 866 6776.....7.30pm

2nd Tue – Coromandel/Colville Cmty Board,
 Council Chambers, contact (07) 866 1001.....9am

2nd Tue – Public Trust, Harcourts, contact 0800 368 620.....by appt

1st Wed – Coro Embroiderers' Guild,
 Ambulance Station, contact Jill Wilson (07) 866 7484.....10am-3pm

1st Wed – Lions Dinner Meeting,
 Ambulance Rooms; contact Jayne Lister (07) 866 7687.....6pm

2nd Wed – Garden Circle, ph Linda Wright
 for venue, (07) 866 8440.....1pm

3rd Wed – Lions Business Meeting,
 Ambulance Rooms; contact Jayne Lister (07) 866 7687.....7pm

4th Wed – RSA Women's Section, RSA
 lounge, contact Betty (07) 866 8192.....1.30pm

2nd Thu – Coromandel Writers Group,
 contact Margaret (07) 866 8862.....10.30am-2.30pm

3rd Thu – Coromandel Poetry Group,
 contact Jocelyn Davey, (07) 866 7101 ..6pm

4th Thu – Coro SeniorNet, Trust Waikato
 Events Ctr, contact Loes (07) 866 8053... 1.30pm

3rd Fri – Housie at Bowling Club, bar available,
 contact (07) 866 8886..... doors open 6.30pm,
 calling starts 7pm

1st Sat – Coro RSA, RSA Hall, contact Errol
 (07) 866 8845.....4-10pm

3rd Sat – Luncheon Ladies, contact Lorraine
 (07) 866 8144.....12pm

3rd Sat – Coro RSA, RSA Hall, contact Errol
 (07) 866 8845.....4-10pm

1st Sun – Coro School of Mines & Historical
 Sty/Museum, contact (07) 866 8711.....4pm

1st Sun – St Andrew's Union church service,
 Rings Rd, contact (07) 866 8633.....10am

2nd Sun – Christ Church service, Tiki Rd,
 contact Barbara O'Reilly (07) 866 8299.....10am

2nd Sun – Young Eagles, Tiki Rd, contact
 Lisa (07) 866 2055.....9am

3rd Sun – St Andrews Union church service,
 Rings Rd, contact Hilda (07) 866 8633.....10am



4th Sun – Christ Church service, Tiki Rd,
 contact Barbara O'Reilly (07) 866 8299.....10am

5th Sun – Christ Church/St Andrew's share
10am

Advertisers' directory

Company	page
360 Discovery Ltd	7
Ann Kerr-Bell – Natural Medical	10
Aston Electrical Ltd	17
Castle Rock Cafe	3
Chai Tea House	11
CILT	12
Colville General Store	16
Coro Gym	32
Coromandel Boat Hire	4
Coromandel Bowling Club	33
Coromandel Cabs	24
Coromandel Community Library	26
Coromandel Construction	29
Coromandel Garage Ltd	15
Coromandel Glass	14
Coromandel Marine Engineering	28
Coromandel Marine Farmers Ass.	20
Coromandel Music Society	27
Coromandel Mussel Kitchen	23
Coromandel Plumbing (1986)	13
Coromandel Quarry Ltd	22
Coromandel Refrigeration	10
Driving Creek Railway	24
Gaia Decorators	30
Harcourts	18-19
Hereford 'n a Pickle (farm shop)	6
Himalaya Shop – Roah Design	21
James and Turner	6
James Drainage '97 Ltd	22
Johnston Fencing	30
K Bay Kayak and Paddle Board	11
Llandem Consulting Engineers	22
Lynley Ogilvie – massage ther.	24
Mana	21
Nathan Savill	6
Papa Aroha Engineering	26
Peninsula Business Services	13
Peninsula Electrical Services	20
Purnell Jenkinson Oliver - Lawyers	25
Richardsons Real Estate	8 – 9
Scott Revell Building Contractor	16
Steelcraft Ltd	24
Tangiaro Kiwi Retreat	17
Tapapacifica exhibition	14
The Olive Motel	16
TCDC	5
The Hauraki Taxation Service	4
The Lighthouse Studio	28
The Waterworks	31
Waitaia Nursery	4

If your meeting is listed incorrectly, or has been missed out, please email Debbie at corochronicle@gmail.com with the subject "meeting" phone (07) 866 7119 or post details to PO Box 148, Coromandel 3543. Please include contact name and phone number.

MON	TUE	WED	THU	FRI	SAT	SUN
Make sure your event gets listed To get your event listed, email the details, your name and contact phone number to Debbie at corochronicle@gmail.com with the subject "event". Or post to Jude Publishing, PO Box 148, Coromandel. There is limited space available and will be published subject to space availability, with preference to not-for-profit groups.						
New moon  Full moon  Tide times and heights from Land Information NZ for Coromandel Harbour. For Thames times -15min High and -18min Low. Note: Tide heights are different for Thames. Bite times and good fishing ratings supplied by Ken Ring, www.predictweather.com 🐟🐟 = Average fishing, 🐟🐟🐟 = Very good fishing, 🐟🐟🐟🐟 = Excellent fishing						
5 Library reopens for 2015 (see pg 6) Learn To Swim Classes start (see pg 32) Teach Your Dog To Avoid Kiwi – Waikawau Bay (see pg 29) High tide 8.03am (2.8m), 8.23pm (2.7m) Low tide 1.41am (0.4m), 2.08pm (0.5m) 🐟🐟🐟🐟 Best bite 1am/pm	6 MEG Junior Rangers – Papa Aroha and Nocturnal Walk – Waikawau Bay (see pg 29) High tide 8.48am (2.8m), 9.09pm (2.7m) Low tide 2.26am (0.4m), 2.53pm (0.5m) 🐟🐟🐟🐟 Best bite 1.30am/pm	7 Relaxation special at Mana starts (see pg 21) MEG Junior Rangers – Long Bay and Kiwi Night Adventure – Port Charles (see pg 29) Christmas Art Exhibition closes High tide 9.20am (2.8m), 9.52pm (2.6m) Low tide 3.08am (0.4m), 3.36pm (0.5m) 🐟🐟🐟🐟 Best bite 2am/pm	8 MEG Cuvier Island Day Trips, Up-Close Kiwi Encounter and Meet A Gecko (see pg 29) High tide 10.10am (2.8m), 10.32pm (2.6m) Low tide 3.48am (0.4m), 4.19pm (0.5m) 🐟🐟 Best bite 3am/pm	9 MEG Cuvier Island Day Trips and Up-Close Kiwi Encounter (see pg 29) High tide 10.48am (2.7m), 11.11pm (2.6m) Low tide 4.28am (0.4m), 4.56pm (0.5m) 🐟🐟 Best bite 3.30am/pm	10MEG Cuvier Island Day Trips, Teach Your Dog To Avoid Kiwi – Te Mata (see pg 29) Tapapacifica exhibition starts at Hauraki House (see ad pg 14) Nigel Gavin, guitarist, Chai Tea House (see ad pg 11) High tide 11.26am (2.7m), 11.49pm (2.5m) Low tide 5.04am (0.5m), 5.35pm (0.6m) 🐟🐟 Best bite 4.30am/pm	11 Headland Walk – Waikawau Bay (see pg 29) High tide 12.04pm (2.6m) Low tide 5.44am (0.5m), 6.15pm (0.6m) 🐟🐟 Best bite 5am/pm
12 CHRONICLE DEADLINE – February issue MEG Bounty Hunters and Teach Your Dog To Avoid Kiwi – Kuaotunu (see pg 29) High tide 12.28am (2.5m), 12.44pm (2.6m) Low tide 6.25am (0.6m), 6.56pm (0.6m) 🐟🐟🐟 Best bite 8am/pm	13 Geordie's Open Floor Dance Prayer at Mana (see pg 21) MEG Morepork Survey – Port Charles (see pg 29) High tide 1.09am (2.4m), 1.26pm (2.5m) Low tide 7.10am (0.7m), 7.40pm (0.7m) 🐟🐟🐟 Best bite 7am/pm	14 CLIT Resource Centre reopens for 2015 (see pg 13) MEG Nocturnal Walk – Waikawau Bay (see pg 29) High tide 1.55am (2.4m), 2.12pm (2.5m) Low tide 8am (0.8m), 8.28pm (0.7m) 🐟🐟🐟🐟 Best bite 7.30am/pm	15 High tide 2.47am (2.3m), 3.01pm (2.4m) Low tide 8.54am (0.8m), 9.21pm (0.7m) 🐟🐟🐟 Best bite 8am/pm	16 MEG Junior Rangers – Waikawau Bay (see pg 29) High tide 3.45am (2.3m), 3.56pm (2.4m) Low tide 9.52am (0.8m), 10.18pm (0.7m) 🐟🐟 Best bite 9am/pm	17 MEG Starlight Cinema – Waikawau Bay (see pg 29) DJ night at Chai Tea House (see ad pg 11) High tide 10.51am (0.8m), 11.17pm (0.6m) Low tide 10.51am (0.8m), 11.17pm (0.6m) 🐟🐟 Best bite 10am/pm	18 High tide 5.44am (2.5m), 5.55pm (2.5m) Low tide 11.47am (0.7m) 🐟🐟 Best bite 11am/pm
19 MEG Coastal Clean-Up – Waitete Bay (see pg 29) High tide 6.40am (2.7m), 6.54pm (2.7m) Low tide 12.14am (0.5m), 12.42pm (0.5m) 🐟🐟🐟🐟 Best bite 11.30am/pm	20 Geordie's Open Floor Dance Prayer at Mana (see pg 21) High tide 7.32am (2.9m), 7.50pm (2.8m) Low tide 1.08am (0.4m), 1.35pm (0.4m) 🐟🐟🐟🐟 Best bite 12.30am/pm	21 High tide 8.24am (3.0m), 8.44pm (2.9m) Low tide 2am (0.3m), 2.28pm (0.3m) 🐟🐟🐟🐟 Best bite 1am/pm	22 MEG Kiwi Night Adventure – Port Charles (see pg 29) High tide 9.14am (3.1m), 9.36pm (3.1m) Low tide 2.51am (0.2m), 3.20pm (0.2m) 🐟🐟🐟🐟 Best bite 2am/pm	23 Coromandel Art Group Exhibition starts at Hauraki House (see pg 28) High tide 10.05am (3.1m), 10.29pm (3.1m) Low tide 3.41am (0.1m), 4.11pm (0.2m) 🐟🐟 Best bite 3am/pm	24 Beyondsemble (see pg 28 and ad pg 27) High tide 10.56am (3.1m), 11.18pm (3.1m) Low tide 4.31am (0.1m), 5.03pm (0.1m) 🐟🐟 Best bite 4am/pm	25 MEG Nocturnal Walk – Waikawau Bay (see pg 29) Fishing Competition (see pg 32) High tide 11.47am (3.1m) Low tide 5.22am (0.2m), 5.54pm (0.2m) 🐟🐟 Best bite 5am/pm
26 Anniversary Day – Public Holiday High tide 12.10am (3.0m), 12.39pm (3.1m) Low tide 6.14am (0.3m), 6.47pm (0.3m) 🐟🐟🐟 Best bite 8am/pm	27 High tide 1.03am (2.9m), 1.33pm (2.9m) Low tide 7.09am (0.4m), 7.41pm (0.4m) 🐟🐟🐟 Best bite 7am/pm	28 High tide 1.58am (2.8m), 2.28pm (2.8m) Low tide 8.08am (0.5m), 8.37pm (0.4m) 🐟🐟🐟 Best bite 7.30am/pm	29 Te Rerenga School Term 1 starts (see pg 27) Coromandel Area School enrolment day (see pg 26) High tide 2.58am (2.7m), 3.25pm (2.7m) Low tide 8.11am (0.6m), 9.36pm (0.5m) 🐟🐟🐟 Best bite 8am/pm	30 Coromandel Area School enrolment day (see pg 26) Museum Monthly Competition closes (see pg 15) High tide 4am (2.6m), 4.26pm (2.6m) Low tide 10.12am (0.7m), 10.37pm (0.6m) 🐟🐟 Best bite 9am/pm	31 High tide 5.01am (2.6m), 5.23pm (2.5m) Low tide 11.12am (0.7m), 11.36pm (0.6m) 🐟🐟 Best bite 10am/pm	COROMANDEL RUBBISH & RECYCLE TRANSFER STATION SUMMER HOURS Monday to Friday 12.30pm-5.30pm Saturday 10.30am-5.30pm Sunday and public holidays 10.30am-7.30pm