

January 2026
Volume 30 Issue 1

Coromandel Town Chronicle

www.coromandeltownchronicle.co.nz

The community magazine for Coromandel Town and surrounds since 1996

FREE
Community Magazine

Santa Parade

SEE PAGE 3



Celebrating... with the Garden Circle PG 4 at the Bike Park PG 7 with Patchwork & Quilters PG 19



**Haere mai. Welcome to the
Coromandel Town Chronicle**

**View each Chronicle
issue online at
www.coromandeltownchronicle.co.nz**

Cover photo: Santa Parade – runner-up float: Pepper Tree, and dressups.

The Coromandel Town Chronicle is published by Jude Publishing Ltd. It is delivered free to the Coromandel Town area.

For advertising please email Debbie on corochronicle@gmail.com or phone 021 235 6648.

If you have any news stories that you'd like included please email corochronicle@gmail.com. If you are not sure how to put an article together for publication then find tips and advice on the website: www.coromandeltownchronicle.co.nz/html/guidelines.html

The Coromandel Town Chronicle is open for everyone to contribute, however the editor reserves the right to select the articles and letters that are published and edit them for clarity and space.

The Coromandel Town Chronicle is printed with vegetable oil based inks by Print House Ltd, Hamilton. An accredited FSC and PEFC printer.

**Deadline for the next issue is
4pm Tuesday 20 January.**

**Send your letters, articles and advertising to
corochronicle@gmail.com**

Letters 350 words max. and articles 600 words max.

**Live out of town and would like to
receive a printed copy?**

Annual subscription costs \$57 (incl. GST) NZ postage only. See contact details above.

Or download a PDF copy from
www.coromandeltownchronicle.co.nz

Disclaimer: The publisher and its editors of the Coromandel Town Chronicle shall not be responsible in any way for opinions expressed in letters and articles contained in the Coromandel Town Chronicle or for loss or damage suffered by anyone in reliance upon the information contained therein. Further, no endorsement of any product or service featured or advertised in the Coromandel Town Chronicle should be implied or assumed.

ISSN: 1178-721X (Print), 1179-4895 (Online)

Emergency

Call 111. AED's in Coromandel Town: Fire Station, Ambulance Station, Four Square, Coro Family Health, Bowling Club/RSA, Te Korowai and Phoenix House. Although AED's are important, St John say performing continuous chest compressions/calling 111 takes priority.

..... Editor's comment

Happy New Year everyone. The Chronicle is 30 years old this year! It was started by the Business Association in 1996. I am proud that I have been one of the publishers over the years.

Thank you for all the support from advertisers and the groups who supply articles – it is great that the Chronicle gets so much support from the community.

What a wonderful Santa Parade this year with lots of awesome floats and the rain that threatened stayed away. Which was your favourite float? I attended for the first time in a few years and it brought back memories of being in the parade when my children were little.

My summer will be a different one this year as I have a puppy! At the moment she is very little and needs lots of attention and can't go for walks until she is fully vaccinated, so I have had to stay home a lot. But when we are able to take her out to explore then I'll be looking for places to take her. Hopefully I can find some good dog friendly places to go. I saw the launch of the Coromandel Tracks and Trails Guide online version and was hoping this would have a dog category, but I can't see it. Let me know if you have any suggestions.

Have a great summer and rest of the school holidays.

Debbie

Email letters and opinion pieces to the *Coromandel Town Chronicle* corochronicle@gmail.com. Contributions should be kept short, and should not exceed 350 words. The editor reserves the right to reject letters or edit them for clarity and space.



HEAT PUMPS

Warm or cool a medium sized bedroom, with a Mitsubishi starting at \$2000 installed. Other sizes and brands available.

**Call Bill for a free no obligation
quote 027 271 4803.**

www.dynaminelectrical-whitianga.co.nz



**MICHAEL WOOD
BUILDERS LTD
COROMANDEL**

mikewood@outlook.co.nz

021 143 1652

• NEW HOMES • ADDITIONS/REPAIRS • RENOVATIONS • DECKS/FENCES

W A N T
NATIVE NURSERY & EDIBLES
WAITAIA RD, KUAOTUNU

A wide range of beautiful natives,
palms and fruit trees.

Potting mix, compost, mulch, chook manure.

Open Thursday- Sunday 8.30-4.30 or by phone appointment
Please phone Colin Hill 07 869 5910 or Cam on 021 620 798

Santa Parade 2025



Winning floats

Best business: Driving Creek Railway
 Runner up: Pepper Tree
 Best community: Grey Power
 Playcentre choice: Coromandel Garden Circle

Colouring in winners

6 & Under: Damon Visser
 7-9 year old: Charlee Moore
 10+ year old: Alice Inen

Best dressed

Best dressed adult: Kim Elder & Gail Peters.
 Best dressed kids: Meadow Evans-Mason, Charlee Moore



BEST BUSINESS FLOAT



BEST COMMUNITY FLOAT



Himalaya shop : Colville

Hi Everyone we hope you have all had a good Christmas. The Himalaya shop will be open 7 days a week during January month. We still have a large selection of summer clothes, throws and home decor items. So, take a drive up the coast and come and browse. Times are 10 a.m. to around 4 or 5 p.m. You may contact us at the shop 07 8667 224 Anette's mobile 012 139 7838 and Rob 021 155 8559 Or e-mail us at robnnet@yahoo.com

WHITIANGA FLOORING XTRA

Style your space, your way.

tile warehouse VEN LUTREE

ENJOY DISCOUNTS ON TILES, CURTAINS AND BLINDS WITH YOUR FLOORING PURCHASE.

Spend \$3000 get 15% off

Spend \$5000 get 20% off

Spend \$8000+ get 25% off

Whitianga Flooring Xtra
 68 Albert Street, Whitianga
 E: whitiana@flooringxtra.co.nz
 P: (07) 866 2836

Coromandel Garden Circle

By Sheana Goudie

December seems to have arrived very quickly and this month saw us sitting down to a very yummy Christmas lunch, dressed up in Christmas attire (a spot prize for Glenise R), sporting a huge range of Christmas earrings (a spot prize for Jill Rabarts) and participating in lots of noisy banter (spot prizes went to Sue O and Diane D who from all reports were very, very noisy at the Star and Garter debrief of the Paeroa Trip). After lunch Irene D read out the Christmas Diet Lament which many of us could really relate to.

Our meeting discussed our Christmas Float entry and the recent trip to Paeroa, rued the postponement of the trip to the Hamilton Gardens (now scheduled for February) and a "thank you" to a few members for jobs well done. We also took the opportunity to sing happy birthday to Marie M and also to present one of our life members Irene B with a bouquet of flowers to mark her 90th



birthday on Christmas Day. Jeni M was our speaker this month and demonstrated some different ways to decorate a Christmas tree, based on her expertise having owned a Christmas Heirloom Shop franchise for many years, that also included decorating many Christmas trees. I think we all took away a number of new ideas and I for one discovered how to make my Christmas lights look so much better!

A big thanks to Lorraine L and her helpers for the fantastic line up of Christmas raffles which were so beautifully wrapped and displayed.

The meeting then finished with Secret Santa gifts – each member having brought a Christmas wrapped gift for the basket. Instructions were to select a gift but we were

not allowed to open it. When everyone had their gift, we asked them to pass it to the member on their right leaving a mixture of emotions when each saw what was behind the wrapping paper – some happy some not so happy, but it was all a lot of fun and conversation as we ate our afternoon tea.

Our usual monthly competitions took place and the results of the competitions for December, were as follows:

Single Bloom: 1st Tracy K, 2nd Carol A, 3rd Sue O



Multi Bloom: 1st Medrina J, 2nd Linda W, 3rd Marie M

Mini Bloom: 1st Kelera K, 2nd Jill R, 3rd= Medrina J

Three of a kind: 1st Kelera K, 2nd Jill R, 3rd Judy R

Arrangement: A Bowl and a Candle – 1st Carol A, 2nd Tracy K, 3rd Sheana G

Special: Berry Beautiful – 1st Sheana G, 2nd Linda W, 3rd Tracy K

Next Meeting: **Wednesday 11 February** – no January meeting.

Venue: Lorraine Lang's on Tiki Road
Start Time: 1.00pm

Visit from Kuaotunu Garden Club and our usual Meeting and Competitions will be at this venue. More information will be sent out in February.

We love to welcome new members to our monthly meetings which are held on the second Wednesday of each month at The Coromandel Combined Clubrooms at 1pm.
Ph Jeni 021 0227 5341

Coromandel Contract Bridge

By Judy Bronlund

Welcome to 2026. The Coromandel Bridge Club takes a break over the holiday season and will be resuming play on the first Monday evening in February.

Contact Jackie 021 061 6876

PENINSULA ELECTRICAL SERVICES LTD

Commercial & Domestic Electrical Contractors



RAVINDER & SUE RAJ

Registered Electrical Inspector

P.O. Box 109
Coromandel

Telephone (07) 866 8166

Free Phone: 0800 4 Electrical (0800 435 328)

E-mail: ravinder@e3.net.nz

1750 S/H 25

Coromandel

Fax (07) 866 8162

Mobile (0274) 738 734



Hunchie Davies 021 796 452

Excavations Landscaping Siteworks

FOR EXCEPTIONAL WINDOWS & DOORS

FAIRVIEW THAMES

10 Millar Place, Kopu, Thames

Love
your
view

fairview
EXCEPTIONAL WINDOWS & DOORS

P: 07 868 9105
office@fairviewthames.co.nz
www.fairviewthames.co.nz

CILT

Tēnā koutou katoa.

As 2025 draws to a close, the Coromandel Independent Living Trust reflects on another meaningful year of supporting our locals, strengthening connections, and walking alongside our community through both everyday moments and significant milestones.

We are proud to remain a locally grounded organisation, employing around 40 staff and 25 volunteers who bring skill, compassion and commitment to their roles each day. Their mahi is supported by strong partnerships with local organisations, schools, funders, and community groups who share our vision of a connected and caring Coromandel.

As we look ahead to the coming year, CILT remains focused on listening to community needs, strengthening existing services and exploring new ways to support well-being, inclusion and resilience across the rohe. While challenges remain for many families and individuals, the strength of our community continues to shine through.

To everyone who has supported CILT this year – whether as a client, volunteer, donor, partner, or supporter – thank you. Your support enables us to continue this essential work and ensures that no one has to navigate life's challenges alone.

Ka mua, ka muri – we move forward together, guided by what we have learned and



grounded in the relationships that make our community strong.

Office closure

We have made the decision to close our office for the holiday period. Our office will reopen on **Monday 19 January**. If you are needing any travel assistance during this time, please contact Coromandel Family Health Clinic.

We apologise for any inconvenience this may cause and wish everyone a Happy New Year.

Sip n' Scoop at The Bizarre!

Sip n' Scoop is a new short-term initiative created as part of The Bizarre, with the purpose of offering our rangatahi work experience in serving customers, money handling and a glimpse at the way a small business operates, as well as being a new funding stream for The Bizarre Community Grants Scheme.

On the menu is a range of yummy treats available, including scooped ice cream, iced coffee, fresh smoothies and delicious shakes!

Sip n' Scoop is only running for 10 weeks, so pop down, enjoy the treats

while you can and help support The Bizarre Community Grants Scheme!

The Bizarre's FILL-A-BAG Fridays

The Bizarre is overflowing with quality second-hand clothing, so it's the perfect time for a wardrobe refresh! Every Friday, you can purchase a bag for just \$5 and fill it to the brim with assorted clothing of your choice.

Come along and see how many goodies you can fit in your \$5 bag!

Dawn at Coromandel

By Maja Skilling

Maja Skilling wrote this poem when she was 12 years old

POETRY SPOT

The sky is unclothed
A tabula Rasa, a blank slate
devoid of colour or texture
lying in wait, salivating,
for the sun to pour its light
into its waiting arms.
The whole world taut with tension
waiting for the birth
as the sky becomes not just a collection
of particles, but
a living, breathing being
this awakening, this divine birth of a day
can be so easily overlooked in a world
where we don't slow enough to notice its course
but here in Coromandel this birth is as
raw and real as if it is happening inside me.

RETIREMENT COTTAGES FOR SALE

A retirement village nestled in the heart of the Coromandel Town that offers independent living and amazing facilities like communal games room, ballroom, library, lounge, kitchen and dining area, two large decks with BBQ's, boat and campervan parking

Cottage Features

- ✓ Fridge
- ✓ Oven
- ✓ Cook-top
- ✓ Microwave
- ✓ Washing machine/Dryer
- ✓ Heat pump
- ✓ St John alarm
- ✓ Car port

Contact Wayne Besley
027 247 2016

www.coromandelvillage.co.nz
VISIT OUR WEBSITE

COROMANDEL LIFESTYLE VILLAGE

2 Bedroom units
\$450,000

CALL 027 247 2016 NOW
to arrange your personal tour
through the village

Coromandel Town Information Centre

By Viv Blackler

As the Christmas glitter settles the calendar flips to a fresh start as we step into January 2026.

Supporting our local businesses is one of the best “resolutions” you can make, make a point to use one of our wonderful shops or eateries here in Coromandel Town, your dollars circulate right back into our community.

Our little town will no doubt be bustling with visitors over the New Year period, the Keltic Fair on **Friday 2 January** always draws a huge crowd, held at the Coromandel Area School, making the town exceptionally busy. This is a fantastic boost for our local economy.

As we all navigate the busy start of the year we remind you to remember the hard work our retail and service industries put in to make it run smoothly. Patience, a smile, a “thank you” go a long way for those working long hours.

Fingers crossed the weather will be kind, the beaches sparkling and the holiday energy in full swing, January truly is the peak season here in Coromandel. Warm weather and high occupancy mean we need to be mindful of our resources, particularly water. Conservation of water is always a must around this time, so be conscious of your consumption.

Pay attention to road safety and drive to the conditions. Our roads are twisty, busy and not everyone is fantastic at driving on them!

For our visitors you will be busy making memories, don't miss the Driving Creek Railway and the Coromandel Gold Stamper Battery. Take a trip to The Waterworks on the 309 Road for a quirky day out. The Coromandel Museum is full of history to be enjoyed. Our Kauri Block Walk and Long Bay walks are fabulous. Utilise the Coromandel Bike Park which recently has had a few upgrades.

Our locals will be keeping the town running. Hospitality: Shops, cafes and restaurants will be working at full capacity. Essential services: Local police, volunteer fire services and medical centres will be available to handle the increase of visitors, thank you all so much!

Everyone enjoy the beautiful, busy summer! If there is anything specific you need help with, please call into the Information Centre as we are here to help.



Coromandel Embroiderers' Guild

by Marilyn Jesse

Christmas is a wonderful time to celebrate embroidery with many of our treasured heirloom pieces coming out for the occasion. Whether it is Christmas decorations for the tree or the room, table cloths or runners, or gifts for the special people in our lives, handmade treasures add to the festivity of the day and are remembered for years to come.

Having celebrated 2025 with a Christmas lunch and an exhibition in early November we have a long holiday until our next Embroidery Guild meeting which is the first Wednesday in February. But there is still plenty of food for thought with a new challenge issued by our president: “the 1920s into the present day”. The aim is to evoke the spirit of the 1920s and also to celebrate the use of raised stem stitch. The challenge can be completed in either a traditional or contemporary style.

Also food for thought is the workshop list for 2026 which includes amongst others, traditional Wessex embroidery, canvas work, crewel embroidery and a contemporary take on vintage concertina books. Workshops are a great opportunity to gain new skills and ideas, with friendly tutors providing assistance.

So if stitching is on your list for 2026, and you want to join a friendly and supportive group we'd love you to join us at the St John's room on the first Wednesday of the month from 10am-3pm.

If you would like more information please contact our Secretary Sandy Morris 021 815 667



IMPROVE YOUR EYESIGHT NATURALLY

with world-renown author
Peter Grunwald

at the

MANA RETREAT CENTRE
Coromandel 5-11 January 2026

Consultations, Eyebody books
and Pinhole Glasses

info@eyebody.com www.eyebody.com

TWENTYMANS
FUNERAL DIRECTORS
Since 1867

*Honour your
loved one's
legacy in the
best possible
way*



07 868 6003
funerals@twentymans.co.nz
www.twentymans.co.nz



Bike Park Celebration

By Andy Reid

Some 60 people attended the bike park celebration and book launch earlier this month to remember founders Keith Stephenson and Andy Reid, whose account of their 20-year collaboration has just been published in a glossy, illustrated book, *Are You Trying to Kill Us?*

Keith's widow Rita welcomed the wonderful gathering of friends, riders, former competitors, volunteers and community members – all people who were touched in one way or another by Keith's energy, humour and endless commitment to getting people outdoors. Coromandel Bike Park was the perfect place to honour him; after all, it stands today because of Keith's vision and the hard work of so many who believed in what it could become.

As we gathered around the beautiful new shade area and seat, we looked up to the kauri trees Keith planted along the ridgeline – standing proudly like his own personal army. They're an impressive contrast to the old pines on the right, which he ring-barked with great enthusiasm.

A great spread was provided by Rita and Four Square, with Mark Atwood and Tim Fuller on bbq duties and Kayleen Fenton providing chocolate and banana muffins.

The book is now available from Andy, at the Coromandel Information Centre or online at www.arcevents.co.nz with all proceeds going towards maintaining the Bike Park – Keith's enduring legacy for the Coromandel.

Thank you again to everyone who joined us, shared memories, and helped keep Keith's spirit very much alive.

Library News

By Dee Beavan, Librarian

Latest books here for your summer reading.

We've had some great new titles come in recently. New books go out quickly, so if something catches your eye, you're welcome to give us a call, send an email, or pop in to place a hold.

With the summer school holidays in full swing, consider bringing the kids into the library for a break from the sun. We've some great children's books they can browse through. If your child would like to take books home, junior memberships are free if their parent is a member. Adult memberships are still only \$25 per year.

The next carboot sale, supporting our Coromandel Community Library, is on Saturday 7 February. We hope to see you there shopping, or bring your car and sell a few things yourself. It's only \$5 per car to sell your wares and is always a bit of fun. Thank you to all who have supported and who have helped make the carboot Sale a success this year and thanks to our wonderful volunteer Jeni who runs it, all very much appreciated.

During December we ran a Coromandel Community Library fundraising raffle. Thanks to all who bought a ticket. At the time of writing this article the raffle hadn't been drawn – congratulations to the winner whom I will mention in the next Chronicle article. A very big thanks to the generous donations that made the raffle possible, Weta Cafe, Bottle-O, 4 Square, library volunteers, Robyn & Moana Pacific, Super Liquor. Raffle drawn 19 December 2025.

Please note the library will be closed from Christmas Day until 2 January, reopening on **Saturday 3 January**.

From all of us at the library, we wish everyone a safe and happy holiday season with time for reading.



WWW.JAMESDRAINAGE.CO.NZ

Excavators | Tip Trucks | Bobcats
Auger & Chain digger hire
Skip Bins | STMS Services
Septic Tank Services | Portaloo Hire

1020 Tiki Road, Coromandel

p. (07) 866 8308

e. jamesdrainage@xtra.co.nz



**Commercial sections
and units available**

For details please visit
www.coromandelbusinesspark.co.nz

GIVE A LITTLE SUNDAYS



**\$12 PIZZA
SUNDAYS**

**\$1 from every pizza is donated to a
local community service.**

This month:

**Coromandel Community
Swimming Pool**

**ALL DAY EVERY SUNDAY
DINE IN ONLY**



**STAR & GARTER
HOTEL**

Coromandel Town

CONDITIONS APPLY

John Walter Irvine

Poet and writer

October 1940 – December 2025

John passed away peacefully at Phoenix House Rest Home on 8 December 2025. For much of his life, he told me, he presented his "larger than life" persona to the world at large, and he was the life of many parties!

John was multi-talented: not only was he a great writer but also a ballroom dancer, champion longbow archer, champion black-powder pistol shooter, competitive rally driver and winner of numerous trophies for endurance trail bike rides. At one time John managed a tourist lodge in Papua New

Guinea – a job he told me he absolutely loved.

We met later in our lives in an online writing group. At that time he only wrote poetry and I was predominantly an author and story writer. He was living in Auckland and I was living in Greece. Ours was a writing match made in the heavens and it wasn't long after he visited me in Greece that I made the move to New Zealand. I was the Yin to his Yang, and even though our styles were completely different we complemented one another perfectly. He encouraged



me to write more poetry and I introduced him to short story writing.

We were lucky enough to be together for 23 years – more than 20 of them as husband and wife. Family and friends were astounded – we learned later that they had given us six months!

John always lived life unapologetically on his own terms. Now he has gone, my home, my life and my heart all feel too empty. I miss him dearly.

Maureen (Mo) Irvine, Colville

I flew once

By John Irvine

I flew once.

Soaring high above Bedlam
and its scrabbling ants.
My spirit light and free.
Touching Heaven.

I flew under blue skies,
and through cotton clouds,
and saw reflected in the sun's bright lens
a certain immortality.

Effortlessly gliding
through the days of my life,
disregarding the loss of an occasional feather.

For what is one feather? Or two?
Wings have many.
My wings were wide and strong.
Invincible.

Unnoticed, the sky withdrew,
and the clouds retreated beyond my wingtips.
I stand rooted here in Bedlam,
surrounded by the scrabbling ants.

Wingless.

But I flew once . . .

**RIP
JOHN**

He supplied
poems to the
Chronicle for
many years

Coromandel Car Fair

Coromandel's annual charity Car Fair is coming to town.

After several years of taking place each summer off Tiki Road, the Coromandel Car Fair will be held at Coromandel Rugby Club grounds on **Sunday 1 February**.

The fair remains a donation entry, of which, proceeds will go to the local RSA Welfare Fund. This fund was set up in 1932 to help people in the Coromandel community. Last year's car fair proceeds were put towards Coromandel Youth Sailing Club's purchase of a new boat.

In addition to the change of location, for the first time an assortment of spot prizes is also up for grabs.

Thanks to local businesses James & Turner, Fish, Dive and Hunt, Coromandel Town Supply, 4 Square and Naughty Bean Coffee, people on entry will go into a draw to win one of several prizes. Winners will need to be at the fair when the prizes are drawn at 2pm.

The move to town means it will be easier for people to walk to and enjoy all the sights and sounds the car fair has to offer. Public entry will be via Pound St.

Various car clubs from throughout the peninsula and North Island will be on display, as will the many treasured classic, vintage, and just plain awesome cars, trucks and bikes.

If you have some wheels you'd like to show off, there's still space available. Contact Coromandel Car Club via the details below. Entry for display is also a donation.

Live music, sausage sizzle, the fair's famous mussel fritters and ice cream trucks will be on offer with the Rugby Club helping to run the bar.

We look forward to seeing you there! See advert for the Car Fair on the back cover.

Coromandel Car Club contact: Bruce 027 249 0878 or ccwaikato@xtra.co.nz



COROMANDEL CAR CLUB

Barry Brickell Play With Clay Day

HAURAKI HOUSE GROUNDS

Saturday 10th January 2026 · 10am to 3pm

Come along and have fun with local clay with help from top local clay artists and keep alive the memory of Barry Brickell and his contribution to our town.

Try your hand on a potters wheel, use moulds or free form your ideas.

This is a free event open to everyone and includes live music on the Barry Brickell stage.

Supported by Creative Communities



COROMANDEL



BUILDING CENTRE

PH: 866 8848

"We'll see you right"

Llandem Consulting Engineers

Derek Stewart
CP Eng MIPENZ

- Structural
- Civil
- Geotechnical

llandemengineering@gmail.com
(07) 866 6704
027 442 4234



/Richardsons

Real Estate Ltd MREINZ / Coromandel
Licensed REAA2008



Kim
021 533 174
Licensed Branch
Manager



Melissa
027 249 8287
Licensed
Salesperson



Laurie-Ann
027 927 6368
Licensed Property
Manager



Lynne
Office
Administrator

151 Kapanga Road, Coromandel

Phone: 07 866 8900 ☺

www.richardsons.co.nz

coromandel@richardsons.co.nz



Arguably the BEST waterfront location in magnificent Te Kouma Bay! Impressive onsite parking, 4brms, 2bath, living extending to deck, huge games room, garage, SUPERB! **Deadline Sale** – Closes 4pm 20/02/2026 (Unless Sold Prior)



Utterly stunning harbour views from waterfront Wyuna Bay setting. 3brms, spacious decking/open-plan living, sep cabin, 2,041m2 landscaped section, boat parking. Glorious! **Deadline Sale** – Closes 4pm 11/02/2026 (Unless Sold Prior)



Fabulous Pacific Ocean and Mercury Island panoramas! Massive decking, 3brms, huge open-plan living, double garage, carport, abundant parking. Fishing & diving playground! **Deadline Sale** – Closes 4pm 23/02/2026 (Unless Sold Prior)



Beautifully landscaped 2,301m2 section with stream boundary and huge Oak tree. Spacious 3brm home with 2 large decks, fabulous art studio/teenagers retreat. Huge double garage/workshop. Bring the family! **\$PBN**



4,378m2 garden paradise, stream boundary, spacious home, 4brms, garage, decking. **\$1.1M**



Are you a car collector? 4 garages + workshop, 3brm home, 2bath, 1,226m2 section. **\$775,000**



Classic heritage design, inviting 3brm 'Bay' Villa, superb decking, dble garage, art room. **\$795,000**



For the growing family! 4brms, 2bath, double garage, decking, 1,478m2 section. Wow! **\$PBN**



Prime location overlooking Wyuna Bay. 3brms, office, rumpus, dble garage, conservatory. **\$PBN**



Do you have a house plan designed? Serviced 921m2 section on edge of town. **\$425,000**



Commanding Wyuna Bay setting, room for all... 5brms, 2 living, double garage, 3 decks. **\$1.45M**



7,069m2 retreat on outskirts of town, spacious home, sep 1brm cottage, sea views. **\$1.2M ono**



Stamp the design of your new home/holiday retreat! Fully serviced 632m2 section. **\$360,000**

Ann's Good News, Naturally

Massage and body work – soothe that Body

BODY WORK The following are techniques I studied throughout my many years of study at Naturopathic College and Charles Sturt University.

The great news for you is that during your appointment, I can draw on any of these modalities to personalise your best body work treatment, for your best outcome.

Sports Massage: Pre-or-post events or, simply a relaxing massage?

General Articulatory Technique: GAT is the same as osteopathic moves. This works on the whole joint, freeing up restriction and inflammation. For chronic conditions due to muscle binding- e.g., polio, cerebral palsy, multiple sclerosis, arthritis, heart conditions, vertigo, hearing problems, atherosclerosis, fallen arches, asthma, herniated disc, hip malalignment.

Fascial Release: Fascia beneath your muscles becomes hard like plastic as we age if choosing to eat processed foods, sugar alcohol etc. It should be strong but flexible. Correcting and releasing fascia encourages circulation and redistribution of essential nutrients and elimination of stuck toxins in fatty muscle fibre cells.

Lymphatic Drainage: Lymphatic system is your garbage disposable system and your second circulation system. It functions to absorb and transport fat from your intestines. Supports your immune system to carry infected cells through lymph fluid to the blood stream.

Reflexology: Feet and Legs. When walking, with a correct gait, we should plantar down on our heels, and toe off favoring your big toe. However, any deviations from normality in the 26 bones of your feet, and four layers of muscle, create a negative domino effect through your biomechanics or skeletal system. This may create malalignment in your hips or twisting in your neck and shoulders. heel spurs, plantar fasciitis. Complement treatment with a foot bath aromatherapy massage.



Cranial Sacral Therapy – John Upledger Technique – gentle movement that enhances your craniosacral system, in which your brain and nervous system function.

Muscle Energy Release: The direct use of Proprioceptive neuromuscular facilitation (PNF) stretching techniques enables greater flexibility. Rids mind and body of residual effects of trauma and negative emotional experiences.

Pfimmer Technique: Deep tissue muscle therapy and muscle fibre massage. It can be uncomfortable technique as I work on the deep inflammation of the muscle. Tense muscle cuts off circulation to the joints.

Digestive health – post Christmas recovery

After a full-on work year, and the end of year “busy” of December, you may be experiencing exhaustion, maybe experiencing subtle inflammation.

Then on top of that, the celebratory food and drink indulgence of Christmas and New Year can leave you feeling a little on the chubby side.

Rich food, normally not consumed, creates sluggish and incomplete digestion, reflux and bloating, and subtle or profound sore joints from uric acid build up or inflammation from too much alcohol, meat and overly processed nutrient deprived and sugar overloaded food.

Changes occur-reoccurring viruses, chest pain, palpitations, puffy ankles, mild headache, itchy skin, mood swings, sinus, nasal polyps, constipation or itchy genital area.

For some, the holiday is sufficient time to recharge batteries and bounce back, however for others, that “burn out” feeling may linger longer, and you may need more than two weeks for re-establishing vitality and energy for the year ahead.

After 30 years of clinical and personal experience, and a pioneer of gut health, I can help you.

- Love your microbiome's good bugs. Identify and exterminate the bad.
- Live blood analysis – Seeing is believing
- Fact – eating to your blood type enhances your immune system
- Specialising in dietary and naturopathic treatments for many gastrointestinal disorders – Crohn's disease, ulcerative colitis, diverticulitis, Coeliac disease, all cancers.

Nutrient deficient? – Take the test – www.activeelements.com. username 259077, Password 579819

Everyone knows the best place to go fishing is near a mussel farm

Please follow these guidelines to keep everyone safe

- Keep 30 metres from working mussel barges at all times
- Don't tie-up to a line being worked on
- Never cast your line towards a mussel barge – farmers have been injured from flying hooks and sinkers
- No anchors. Tie-on to a longline buoy or use approved mooring hooks
- Minimise your speed and wake
- Never drive across the lines

THAMES COROMANDEL DISTRICT COUNCIL

CoroMFA

Waikato

www.coromfa.co.nz

Natural Medical Centre

The natural alternative for all your health requirements

For appointments,
phone or text: 021 046 1647
or email: annk-b@ps.gen.nz

www.naturalmedicalcentre.co.nz

Ann Kerr-Bell

B.Hlth.Sc. (Comp.Med.)
Adv.Dip.Naturopathy
Adv.Dip.Med.Herb. MNZAMH

Naturopath
Medical Herbalist
Nutritionist
Massage Therapist

Peninsula Pest Services



Contact us for control and prevention of insects, rodents and other pests!

Phone Simon English on 027 555 1271

Email: peninsulapest.nz@gmail.com

www.peninsulapest.co.nz

The Colville Project

The Colville Project celebrates grant success for environmental restoration

The Colville Project Trust is delighted to share that we recently received three significant grants to help us protect and restore critical habitat on our 35-hectare property. This initial work is stage one of a larger restoration project aimed at both riparian and wetland restoration.

Stream fencing and wetland restoration

In the last quarter of 2025, we successfully secured funding from both the Seagull Centre Trust's Community Grants Programme and Colville Junction's Moehau ki te Moana programme, to significantly contribute to the funding of a 150m of seven-wire fencing which will support riparian (stream) and wetland restoration within our northeastern paddock.

Building on this success, we're thrilled to announce that Trees That Count has awarded us 1,000 native trees to revegetate the riparian margin – a freshwater stream that flows on into the wetlands feeding Colville Harbour. Trees That Count is New Zealand's largest network of native tree planting projects, connecting donors with restoration initiatives across the country.

We're currently working with Colville



Seagull Centre and TCP



Harbour Care Nursery to finalise our planting plan, with the revegetation work scheduled for 2026. This planting aligns with our neighbour's significant and well-established downstream riparian restoration work which was planted and fenced by Colville Harbour Care previously. Our restoration project will strengthen this vital habitat corridor for threatened terrestrial and freshwater species and contribute to the protection of critical downstream habitat for endangered species including bittern, fernbirds, and migratory birds such as godwits and curlew.

We extend our heartfelt thanks to the Seagull Centre Trust, Trees That Count, and Colville Junction's Moehau ki te Moana project for recognising the importance of our restoration plans. These partnerships show how charitable funding, government programmes, and local land stewardship can combine to multiply conservation impact far beyond what any single organisation could achieve alone.

Exploring youth recreation opportunities

In addition to our environmental restoration work, we're in very early stages of exploring possibilities for youth recreation on the property. As part of this, we recently hosted Ally Davey, a local bike trail expert and volunteer, to discuss the potential for bike-track development that would provide inclusive outdoor activities for young people and families in our community.

The vision includes multi-use tracks designed for walking, biking, and adaptive mountain biking suitable for all ages and abilities. We're particularly interested in recreational activities that incorporate natural features while protecting flora, fauna and the wider environment – blending community recreational opportunities with TCP environmental and conservation values.

Again, these are very early-stage conversations and we will be looking for people to join our Recreation Advisory Group later in 2026.

Please contact us if you are interested: admin@thecolvilleproject.nz

4
SQUARE

COROMANDEL

YOUR LOCAL FRESH GROCER



OPEN 7 DAYS
50 WHARF ROAD, COROMANDEL



Guthrie Bowron
Inspiration starts here.

Guthrie Bowron
Whitianga
Trust us with your decorating project

**WE OFFER
INSPIRATION
AND EXPERT
ADVICE**

**EVERYTHING
YOU NEED TO
REFRESH
YOUR SPACE**

**BOOK A FREE
IN HOME
MEASURE
AND QUOTE**

07 866 0035

sales@gbwhitianga.co.nz

2/9 Joan Gaskell Drive, Whitianga

www.facebook.com/gbwhitianga

Museum

By Maureen Kimber

On 7 December we held our annual Christmas get-together at the Top Pub, where members and guests enjoyed a very good meal and celebrated the past 12 months. The committee have worked very hard to maintain and improve the standard already set with new and updated displays, including the new merchandising area – you don't need to go round the whole museum just to purchase our goods for sale – and the young ones can have a go at a "lucky dip".

The current Coromandel Granite display has proved to be extremely popular, with a large number of visitors having no idea of its existence and the important part it played in our town. This attraction will continue until at least the end of January, and is well worth the visit if you have not yet been. Following this display we will feature "A Stitch In Time" the title of which probably speaks for itself – further information at a later date.

Although our "raison d'être" is mainly to display past history, we have moved into the present with a new website, plus our efpas and our Facebook page.

The addresses to enable you to read "all about us" is listed below.

We are excited to announce that, with the help of extra volunteers, we are able to open from 10am to 4pm seven days a week from **Thursday 1 January**. We work in conjunction with the Stamper Battery and The Waterworks and you will not be disappointed with a visit to all or any three of these local attractions. Visits are certainly not exclusive to adults, as our present generation have little or no knowledge of our local history and what a great excuse to show them live and interesting historical exhibits

All that remains is to wish everyone – locals and visitors alike – a very happy and successful 2026, and we look forward to meeting many of you during our beautiful Coromandel summer.

With our regards, The Museum Committee.

The Coromandel Museum at 841 Rings Road can be found as follows by: email coromandelmuseum@gmail.com. Website coromandel-museum.co.nz. Our President's mobile 0211 602 351



Boot Scootin

Line dancing is a fantastic way to get fit and at the same time have great fun. Line dancing is good for the mind, the body and the soul. The benefits are endless: improved balance (both physical and mental), a great mood boost, better coordination, and increased self-esteem – all while enjoying fantastic music, from timeless classics to the latest hits. Plus, it's a great opportunity to meet new people!

Line dancing is recognised the world over and no matter where you go you are bound to find a line dancing class where you will be warmly welcomed.

Boot Scootin Coromandel started up here in Coromandel Town, in July 2022 and we are still going strong with most of the original members still dancing 3½ years later.

We meet Monday and Thursday afternoon at the Anglican Church Hall on Tiki Road. We don't wear anything flash, just comfortable clothes and shoes that dance on a wooden floor. We are supportive of each other; we respect each other's space and different abilities. We understand that no one can line dance before they start and that everyone starts with the first lesson and then we never stop learning.

We welcome beginners at any class – it is helpful if you can give us a call to let us know you are coming, that we can prepare so that you have an enjoyable experience.

We welcome line dancers from other clubs, whether they are local or just passing through.

Where: Anglican Church Hall, Tiki Road

When: Monday and/or Thursday

Time: 3-4.30pm – The first 30 minutes of the class will be dedicated to those who are new.

How much: Great value for money, \$5 per session for an afternoon of dance, music and fun

Why? There is no reason why not: "I'm uncoordinated" – Even more reason to give it a go! "I can't dance" – You won't know until you try, and we'll be there to teach and guide you every step of the way.

For more info: Don't hesitate to Contact - Jeni 021 022 75341; or Vickie 0274 177 077



The fairest fare by far

**For a professional & friendly
everyday taxi service & more!**

Ph: 027 376 4466

Email: corotaxis3506@gmail.com

www.corotaxi.co.nz

Coromandel to Thames Connector Shuttle MONDAY TO FRIDAY

8am – depart Coromandel

9.10am – arrive Thames

11.15am – depart Thames

NEW PRICES FROM 1 OCTOBER:

\$20 one way or \$25 for the round trip.

Click & collect \$14

Bookings essential.



FOR SALE

In 2026 after family holidays
317 Te Kouma Rd, Coromandel

Family farm house on 5296 sq m. Parts of house over 100 years old.
Mature grounds with native bush at the rear. If required, the land is sub divisible
into 2 additional sections, or if house removed, 3 additional sections.
Sleeps 10 with granny flat underneath. Garage workshop, storage room, boat shed.
Magnificent views over Coromandel Harbour.

We have enjoyed it for 85 years.

To register your interest email Leonard Heard heardleo@hotmail.com





Grey Power Coromandel Inc

Coromandel Christmas Parade – Theme: Seniors can do anything!

The “Grey Power A Team” of Irene and Blen Dunn, Ann Turner, Barbara O’Reilly, Loes and Allan Beaver, Brian and Gaye Holmes and Nadine Wishnowsky assisted Ian and Patricia Whimp with the Coromandel Christmas Parade Float! What an effort made by all! A working bee of preparing the signage for the float on Monday, and then on Friday the dressing of the truck. Thank you, Allan, for painting the signs with the new Grey Power Logo.

Our float featured Blen in a dinghy, multitasking as Santa’s gift helper and part-time fisherman. Loes and Gaye played cards like it was a high-stakes tournament, Ann tended a potted plant with saintly patience, Brian hammered away as he created toys, and Nigel kept watch over his brother’s Cyril Strongman’s amazing solar clock. The average age was about 83! So, seniors can do anything!

And we are proud of winning the Best Community Float 2025!

We look forward to seeing you all at our next meeting on **Wednesday 18 February** at Coromandel Bowling Club – Twilight Bowls Night / Sausage Sizzle (RSVP please by 13 February).

If our local association does not receive sufficient support from its members in the new year, all the hard work carried out by past committees and the Federation may be lost, and the association could be forced to close.

The Committee feels that they are continually speaking to the same small group of members who attend meetings, and we strongly urge all members to take an active interest in the association – please.

Merry Christmas to all our members – Be safe and enjoy family and friends.

President – Brian 027 319 0172 (beeandgee@hotmail.co.nz), Secretary – Nadine Wishnowsky 021 062 1142 (wishnadine@hotmail.com), Membership Secretary – Carol 021 081 66129 (carolcarson@xtra.co.nz), Treasurer – Patricia Whimp 0274 985 227 (greypowercoro@gmail.com)

Accountants

The Hauraki Taxation Service Limited

- ▶ For out of town independent accounting advice
- ▶ Established 1982
- ▶ Approved agents for Inland Revenue Department
- ▶ Offices in Coromandel Town & Thames

myob

xero

CASHMANAGER

Smart Accounting Software

BY ACCOMPLISH

95 Kapanga Road, Coromandel

Ph/Fax: 07 866-8660

Em: coro@haurakitaxation.co.nz

Hon Scott Simpson MP for Coromandel



Summer is finally here and it’s been great to see the arrival of another batch of first-time and returning travellers. Their enthusiasm to unwind and relax in our part of the world is infectious and it always creates a positive vibe which brings our towns to life.

If you’re passing through our region, welcome and feel free to stay awhile. There’s plenty of ways to spend a day on the Coromandel Peninsula. You can shop at some of our unique retailers, eat some delicious food, or explore our stunning natural environment. If you need a rest, we’ve got you covered as well because there’s no better place to sit back, soak in the warm weather, and watch the world go by than at one of our world-famous beaches.

In terms of politics, Parliament has risen for 2025, but not before the Government announced proposals which will deliver the most significant changes to local government in decades.

Under the new planning system which will replace the RMA, we’re stripping out duplication, standardising processes, and driving down complexity and compliance costs. That means regional councils will have a significantly reduced role and make the current structure of local government no longer fit for purpose.

The Government is proposing to abolish regional councillors entirely and replace them with new Combined Territories Boards made up of mayors from the region’s city and district councils. These boards will also lead regional reorganisation plans within two years of establishment, which will assess the current functions of councils in the region and set out options for future delivery.

These proposals are open for public consultation until **Friday 20 February** and more information can be found on the Department of Internal Affairs’ website.

Finally, I want to wish all the readers of the Coromandel Town Chronicle a Happy New Year and all the best for 2026. The turning of the calendar is always a great opportunity to reflect on the year that’s been, make a few resolutions, and then set out a plan to achieve them over the next 12 months and into the future.

Scott Simpson MP for Coromandel

Contact me anytime

0800 550 330 • scottsimpson.co.nz
mpcoromandel@parliament.govt.nz
scottsimpsonmp

National

Authorised by Scott Simpson, Parliament Buildings, Wellington.



- Concrete Floors
- Driveways
- Pathways
- Concrete Cutting
- Landscape
- New Developments
- Grounds Maintenance

Aaron 0274584044

Colville Community Health Trust

By Kate Armstrong CCHT Chairperson on behalf of the Trustees

I'm sharing an important update regarding the future of the Colville Community Health Trust (CCHT).

After careful consideration and with guidance from Community Waikato community advisors, the trustees have agreed to wind up the CCHT Trust. This decision was made in consideration of our legal responsibilities under the Trusts Act 2019 and Charitable Trusts Act 1957, and was not made lightly. This decision reflects current challenges facing the Trust while upholding our commitment to ensuring the Trust's original purpose continues to be served in the best possible way.

Why this decision was made

- The Trust has no sustainable funding pathway to continue operating in its current form in the current funding environment.
- Due to our inability to fund a Manager, and increases in Governance workload, the Trust is no longer able to meet its compliance obligations.
- Community needs have changed.
- Trustees are legally required to act in the best interests of the charitable purpose and the wider community, and must avoid the risk of going insolvent.

What this means for Northern Coromandel Communities

The Northern Coromandel retains the Colville Community Health Centre, with care provided through collaboration between Coromandel Family Health Centre, our supportive landlords Kaye and Roy Ward and The Colville Junction Trust.

In addition, after 18 years of working to support our community's health and wellbeing with enthusiastic and supportive community effort, the CCHT will now deliver its purpose by retaining CCHT Trust assets in our community via our other charitable trusts.

Community Donations for Medical Centre: We have already ensured the building fund remains tagged for future development of targeted health facilities, with a formal agreement in place. Being transferred to The Colville Project Trust (TCP) is in keeping with our community's journey towards a more resilient future.

CCHT Equipment Assets: These will now be transferred to the Colville Junction Charitable Trust (CJ) established 1997, is a community organisation which has the infrastructure, governance, and funding capacity to support continued access to health and wellbeing services in our region. CJ will continue to provide equipment to support the Colville Community Health Centre.

These transitions ensure:

- Continuity of purpose: The original goals of CCHT will live on through Colville Junction Charitable Trust and The Colville Project Trust.
- Stronger funding potential: Consoli-

dating charitable efforts strengthens our community's ability to secure future funding in the current climate

- Community benefit: Assets will continue to be used for charitable purposes that support the Northern Coromandel.

Next steps

CCHT Trustees will now work closely with the Colville Junction Charitable Trust to ensure a smooth and transparent transition. Coromandel Family Health and Colville Junction will collaborate on current and future service provision options with the aim of maintaining business as usual. CCHT will continue to keep the community informed and involved throughout this process.

CCHT acknowledges that some of you may have questions or concerns, and we welcome respectful dialogue. Please email us with your questions to admin@colvillehealthtrust.co.nz so we can ensure we address them at our upcoming community meeting. This will be scheduled shortly to provide further information and an opportunity to answer any questions.

As we are required to adapt, we thank these other community organisations for maintaining the commitment to the wellbeing of our community. We also acknowledge our past and present Trustees for their commitment to upholding our purpose over the past 18 years.

With gratitude to everyone who has volunteered and donated to the CCHT, this process is to ensure your hard work will continue to benefit our community.

Top Town Retreat Price by Neg.



This totally unique property is a tranquil private heaven for those who are looking for something completely different. The main North facing barn enjoys the sun all day. The main level features an open plan kitchen plus a combined dining and lounge area. There are 2 bedrooms and bathroom. The upper mezzanine floor features the master bedroom. The interior has many artistic touches and has been designed for easy indoor/outdoor living. 3 sets of cedar bifolding doors offer access via decking to the gardens and an outdoor Samoan designed fale. Walkways lead thru a well-established orchard, a greenhouse bordering mature plants & native trees. Picturesque bridges provide access over the trickling stream & 3 different cabins & mudbrick studio, all enjoying their own private setting. These cabins offer extra income potential like Airb&B, or this could be developed into an amazing wellness retreat. Viewing by appt Mob 0224289934 View on Stuff & Trdeme: <https://www.stuff.co.nz/home-property/360911813/unique-coromandel-barn-home-mudbrick-art-studio-seeks-new-creative> <https://www.trademe.co.nz/a/property/residential/lifestyle-property/waikato/thames-coromandel/coromandel/listing/5650305370>

Christ Church

By Father Andy



Firstly let me wish you a "Happy New Year" and I hope you have had a wonderful Christmas celebration. I wonder if Father Christmas brought you something good from his store of goodies? How did you feel when you opened the gift, happiness perhaps, appreciation, and joy? Father Christmas has long been associated with Christmas and his character is based on the 4th Century Saint Nicholas from Turkey, known for his secret acts of charity, helping the poor and children. He's quite famous of course and widely recognized across the world, I think I even caught sight of him in Coromandel Town at the Santa Parade last month! Father Christmas serves as a powerful symbol of something much bigger than himself and that is the power of kindness, love and generosity.

John and I have scaled down buying gifts and sending Christmas greeting cards because we've found we were buying gifts for the sake of it so instead we send a donation to "Medicins Sans Frontieres" (Doctors Without Borders) who provide medical aid where it is so needed in our troubled world which for much of the time seems not so kind and lacking in love and generosity.

MSF is just one organisation that provide humanitarian aid where there is conflict, discord and natural disaster and I am so moved to see such highly qualified medical personnel giving of their time and energy in this way.

Although long gone now Father Christmas is remembered each year as our hearts are warmed and mellowed during the Christmas season but the true focus of Christmas and the motivation of the 4th Century saint is still as fresh and meaningful as ever and will never be lost... that is Jesus Christ, the very essence of God in human form who was born into a humble family and nurtured there to become the hope, the joy and the happiness for the whole world and for the whole of time.

St. Nicholas, Father Christmas was moved to kindness because of the kindness he received from the Lord Jesus and that same motivation is found at work in the lives of the many around the world making a difference in the lives of those who for whatever reason are weighed down by circumstances and disadvantage, restoring a measure of hope and happiness where this has been absent.

Jesus Christ is so often missed among all that Christmas has become these days but as someone reminded me last month, 'Jesus is the reason for the season' and not just for Christmas but for the whole year through. As I wish you a happy new year it's my greatest hope that you may find moments filled with the presence of Jesus, the source and fulfilment of all things to brighten your days and find true happiness during 2026.

Real Estate Matters

Well December is already here!

Each year I feel the time whizz past me quicker, no matter what the year has been like.

The past couple of years, let alone 2025, have not been very enthusiastic for real estate. We have seen prices for our homes dwindling down at really quite a fast pace. We see buyers holding back regularly, are interest rates likely to fall? These activities and reports do have an impact on home owners and the real estate market in general.

It does mean when thinking of selling your home, thinking about where and how to promote your property is increasingly important. There is a buyer for every property! Price, presentation and promotion are keys.

As we see the weather improving and the sunny warm days enticing us to take part in more recreational activity on the water, it is a good thing to remember nature is wonderful, yet we do need to exercise care and be mindful of others near us. Whether using the beaches, fishing, or walking and riding the many trails around the Coromandel coast, or just relaxing with friends, being aware and considerate makes us all much much happier.

The coastal roads are somewhat busier, especially with people who are not familiar with them. More traffic, hot muggy long drives. Rest along the trip and enjoy the coast and sights you may have usually just driven past. Arriving alive is certainly the goal. Leave early, plan some stops and take plenty of water for hydration in the car. Please do not forget your pets in the car, our dogs need hydration and walks to relax and cool down just as we do.

Should you be continuing the search through the holidays for that elusive holiday home or moving into the wonderful Coromandel district, take a moment to check into the www.rea.govt.nz web and familiarise yourself with the guidelines of purchasing, selling or if need be, making a complaint. The site is very helpful. It is user friendly and there to ensure you the public are protected from questionable practices, but most importantly that you have a good knowledge of the process in this country.

Remember being prepared; whether buying real estate or heading out for a fun filled day, definitely helps you have a good experience.

From all of us at Coromandel Beaches Realty, Coromandel, Whitianga, Tairua and Cooks Beaches Harcourts offices; enjoy your well earned break and our wonderful Coromandel Peninsula with new friends, and family. Everyone have a safe and fun filled time, and may we all have a prosperous 2026.

Should you wish to discuss these or other real estate matters, contact Glenn Wells - Licensed Agent. Harcourts Coromandel (licensed REAA 2008) glenn.wells@harcourts.co.nz or 0800 735 788

James & Turner
131 Kapanga Road
07 866 8805

JAMES & TURNER
 KITCHENWARE · PAINT
 HARDWARE · GIFTWARE
 FISHING · CAMPING
 MARINE · GARDENING
 PLUMBING · ELECTRICAL

COROMANDEL FISH - DIVE - HUNT

BOAT PARKING AT THE
REAR OF THE SHOP
- TURN BY THE FOUR SQUARE

Rob & Jeni Ashman Owners / Operators
 Rob - 027 592 7180 | Jeni - 021 636 119 | Shop - 07 866 8797
teamashman201@xtra.co.nz | 95 Kapanga Road Coromandel

RAD

REVELL
ARCHITECTURAL
DESIGN

- New home design and draughting
- Alterations and additions
- Resource and Building Consent applications
- 3D rendering
- Landscape design

Scott Revell

NZDipArchTech
 027 861 6592
scott@revelldesign.nz
www.revelldesign.nz



Wyuna Bay 1275 Wyuna Bay Road
Wyuna Bay Jewel - \$2,995,000



Coromandel 2886 Long Bay Road
Open Views - \$1,800,000



Coromandel 90 Harbour View Road
Dream Build : \$2,375,000



Coromandel 1175 Tiki Road
Urgent Sale - Auction



Coromandel 1695 Wyuna Bay Road
Every Fishermans Dream, - \$895,000



Coromandel 1299 Rings Road
Refurbished Retreat - \$650,0000



Coromandel 949 Tuatēawa Road
Deceased Estate Must Sell - Auction



Tuatēawa 5 Waihirere
Tranquil Oasis - \$775,000



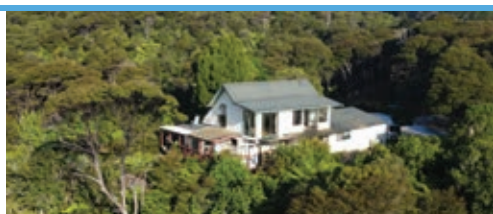
Kennedy Bay 1182 Kennedy Bay Road
Refurbished Retreat - \$589,000



Coromandel 295 Lillis Lane
Dancing Stream - \$689,000



Tuatēawa 15 Kowhai Place
Oceanview Retreat - \$615,000



Coromandel 800 Buffalo Road
Elevated Views - \$1,125,000



Coromandel 65A Victoria Street
Cutie in Coromandel - \$589,000



Coromandel 40 Victoria Street
Heart, Soul and Taste- \$999,000

Coromandel Bowling Club

By Judy Campbell

Happy New Year everybody.

The last few weeks of 2025 were busy at the club with The Coromandel Cup being played for as well as our Club Champ Pairs (Men's and Women's), an Open Triples Ham tournament and the end of Round One of Twilight Bowls.

Vi King and Roger Gardiner won the Coromandel Cup, Vi King and Pamela Harris won the Women's Club Champ Pairs and Jason Dickinson and Colin Gawith won the Club Champ Men's Pairs.

Our first round of Twilight Bowls was completed with the 5pm winners being the team of "Plus 2" and "Salty Towers" winning the 6pm session. Well done to all the teams that participated in this very popular community event.

We have an exciting start to our January calendar with the Coromandel Shelly Beach TOP10 Holiday Park "Campers vs Club" challenge at the club. This is a first for our club with the idea coming from the new owners of Shelly Beach Top10. This challenge will give their guests a chance to experience bowls in a relaxed, family-friendly setting, while also enjoying the hospitality of our club and will be held on **Friday 9 January** from 1-4pm.



Twilight Bowls – Plus 2



Twilight Bowls – Salty Towers

On **Wednesday 14 January**, we have our first Open Optional Triples Tournament for 2026, sponsored by Twentymans Funeral Service and Twilight Bowls. Round Two starts on **Tuesday 27 January** at 5pm.

Have you thought about trying something new for 2026? Come and have a game of bowls with us at the club on Sundays 10:30am for an 11am start (bowls available) or join us for a social drink on Friday afternoons from 3.30pm.



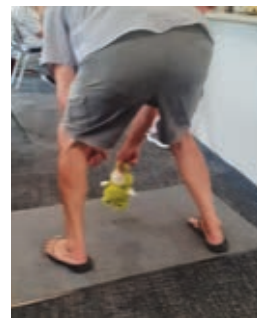
The Combined Clubs of Coromandel (CCC)

By Gary Pettett,

On Sunday 23 November a large number of club members gathered for a lunch at the Club to celebrate the 10th anniversary of the formation of The Combined Clubs of Coromandel (CCC) joining together the Bowling Club and RSA.

Although the organised outdoor events were cancelled due to the very wet conditions, Geoff Kingsmill introduced us to an indoor version of an old English tradition of "Ferret Hurling". As no trained ferrets were available due to the weather, a stuffed frog was used instead! The contestants facing backwards, leaning forwards and bending down, then, between their legs, had to throw the unfortunate frog into a marked circle area – the attached photo is self-explanatory! As there was no ultimate winner, all participants received a chocolate Freddie Frog as a prize. Thank you Geoff for contributing to a fun-filled afternoon!

So many yearly events take place, not only by club members, but local groups who enjoy the facilities offered in our Club rooms. This is in keeping with the CCC idea of the Club being a venue for all our community to enjoy at any time throughout the year.



RSA

By Annette James

An Unofficial Truce in the Trenches – Christmas Eve 1914

It was late evening on Christmas Eve when soldiers for the British Expeditionary Force (BEF) noticed that the Germans opposite them in the trenches were singing Christmas carols. When they looked, they saw lanterns and small Christmas trees. So they started calling out messages to each other.

The next morning the men from both sides met in "no-man's-land". They swapped gifts and took photos together. They even played games of football and they took the time to bury their dead and repair the trenches. Meetings continued until Boxing Day, after which they died out.

The truce was only in one part of the trenches and some of the officers were not happy, thinking it might remove the "fighting spirit" from the men. Also, the High Commands of both Britain and Germany tried to stop any future truces from occurring. However, in a "live and let live" system in some of the quieter sectors of the front line, brief periods of cease fire were tacitly agreed to, allowing both sides to recover their dead and make repairs to their trenches.



Retaining walls & Landscape
Water supply & Tank installs
Gabion walls
Culvert installs

Housepads, Driveways
and access
Foundations & Subdivision
Metal Deliveries

CALL NOW FOR A FREE NO OBLIGATION QUOTE
LEWIS 027 250 5076

JOHNSTON FENCING

PHONE ROSS
021 395 900



DYNAMIC
TREE CARE

Dan Redfern / Arborist
027 451 2224
07 866 8177

dynamictreecare@gmail.com
www.dynamictreecare.co.nz

GD HAULAGE
Cartage Contractor

Demo
021 902268
gdemus@outlook.com

Lions Club

By Logan Nicholls



Hi everyone, welcome to our first article for 2026. We hope you all enjoyed a great year in 2025.

At our October 2025 meeting, it was agreed that we would distribute over \$6,000 in financial support through our presentations. We are proud to say that all of this funding has gone directly back into our community. This would not have been possible without your continued support throughout the year, particularly through the purchase of our firewood and famous mussel fritters. Thank you all.

The first group we supported was our local Community Patrol, which is working hard to establish this valuable initiative in our area. The second presentation went to Coromandel Area School, supporting 12 students and 7 adults who travelled to Rarotonga on a school trip. This group fundraised for over a year to make the trip possible, and we felt their dedication truly deserved recognition. Our third recipient was a second-year student teacher who has been selected to attend a professional development seminar in Denmark. Congratulations to all recipients on achieving these milestones.

In November, we supported Combined Schools Touch Rugby. Four students attended our meeting to share that they would be competing in a touch rugby tournament in Rotorua in December. While they had already been fundraising through sausage sizzles and raffles, additional support was needed, and we were pleased to contribute \$1,500 to help them on their way.

December saw us enjoy a wonderful Christmas dinner meeting on 3 December, catered by Weta Café. As always, the food was outstanding and thoroughly enjoyed by everyone. Our thanks to the team at Weta Café for their continued support.

Looking ahead, don't forget that we will be selling our famous Coromandel mussel fritters at the Keltic Fair on the bottom field at Coromandel Area School grounds on **Friday 2 January**. We may also be running another mussel fritter stall over Auckland Anniversary Weekend, potentially on **Saturday 24 January**. This is still to be confirmed, so please check our Facebook page, "Coromandel Lions Club," in

the week prior for updates. New members welcome, come and see us when we are selling our mussel fritters.

Coromandel Lions Club contacts:
Sue Hughes (President) – 021 142 1124, Jean Smith (Secretary) – 021 208 7576, Kerry Whittle (Projects Manager) – 027 474 2850, Sue Hughes (firewood orders) – 021 142 1124



Patchwork & Quilters

By Sue Smith

We ended the year with our AGM followed by a lovely lunch at Pepper Tree. Our very creative Ursula made our table decorations. A big thank you Ursula and thank you Pepper Tree.

"Mystery block of the month" – A few of us were eagerly waiting for our December block. No doubt these will be put together and finished in the New Year so watch this space as we get them completed. One member has pieced together the Star Burst quilt and we look forward to the finished quilt.

Our first get together for 2026 will be **Monday 2 February** 9.30am onwards. Come along, bring your sewing, knitting or cross stitch and enjoy the company of like-minded people.

We meet at the St John Ambulance Rooms on the 1st and 3rd Monday of each month, 9.30am to 3.30pm. Feel free to call in and see what we are up to. New members welcome.

Contact – Fiona Neal 027 373 6991 or Michaela Green 021 028 71879



Purnell

LAWYERS

BRENDA FLAY, SOLICITOR:

Travels to Coromandel on Tuesdays.

Please phone the Thames Office (868 8680) for appointments.

PARTNERS: Hayley Green and Brenda Flay

THAMES OFFICE: 611 Mackay Street, P.O. Box 31, Thames

PHONE: 868 8680 **EMAIL:** info@purnell.nz

COROMANDEL OFFICE: 150 Pound Street

OUR SERVICES

ESTATE PLANNING / PROPERTY / COMMERCIAL

www.purnell.nz

THAMES

WHITIANGA

COROMANDEL

MH
Matt Hobbs
Plumbing & Drainlaying Ltd

FROM LEAKS TO LUXURY

- WATER FILTRATION SYSTEMS
- ALL PLUMBING MAINTENANCE
- SEPTIC SYSTEMS
- SPOUTING
- GAS FITTING
- WOODFIRES
- HOT WATER CYLINDERS & WATER HEAT PUMPS
- HOUSE REPORTS

**YOUR PLUMBING
EXPERTS IN
COROMANDEL**

CALL NOW

021 0263 4206

jo@matthobbsplumbing.co.nz

www.matthobbsplumbing.co.nz

336 WHARF RD, COROMANDEL



Mana

Dear Coromandel community,

Ngā mihi o te Tau Hou, Happy New Year!

We hope you've eased into 2026 with a joyful and nourishing festive season. It's such a delight to see Coromandel come alive at this time of year, filled with activity and celebration.

It's been just as vibrant at Mana, with full-house retreats and many beautiful moments shared between guests, facilitators, and our team. The energy of summer always brings a special lightness, and we've loved welcoming everyone to Mana.

A heartfelt thank you to those who joined us for the summer working bee and the New Year's Eve dance. We appreciate you showing up and sharing your energy with us.

As we step into the new year, we look forward to more connection, inspiration and opportunities to gather as a community.

We'd like to share one of our favourite poems, "The Summer Day" from Mary Oliver, a beautiful reminder of presence, curiosity, and the preciousness of life



The Summer Day

Who made the world?

Who made the swan, and the black bear?

Who made the grasshopper?

This grasshopper, I mean —

the one who has flung herself out of the grass,
the one who is eating sugar out of my hand,
who is moving her jaws back and forth instead of
up and down —

who is gazing around with her enormous and
complicated eyes.

Now she lifts her pale forearms and thoroughly
washes her face.

Now she snaps her wings open, and floats away.

I don't know exactly what a prayer is.

I do know how to pay attention, how to fall down
into the grass, how to kneel down in the grass,
how to be idle and blessed, how to stroll through
the fields,

which is what I have been doing all day.

Tell me, what else should I have done?

Doesn't everything die at last, and too soon?

Tell me, what is it you plan to do

with your one wild and precious life?

Community Open Floor Dance Classes

Upcoming dates: **Tuesday 27 January, 3, 10, 17 & 24 February**. Join us for a fun and expressive morning of movement. No experience needed, just come as you are and dance with us!

Time: 10-11.45am. Cost: \$25-\$20 (sliding scale).

We look forward to connecting with you soon.

Arohanui, The Mana Team

For all bookings and enquiries see www.manaretreat.com, 07 866 8972, be@manaretreat.com, 608 Manaia Road, Coromandel

Coromandel Tracks and Trails Guide

Discover the hidden gems of the Coromandel by following the Thames-Coromandel District Council brand new, info-packed digital Coromandel Tracks and Trails Guide.

View it straight from your phone: enjoy interactive maps, discover walking or riding routes, and use simple navigation tools to explore the Coromandel your way.

The guide allows you to choose your path by mode of travel: hiking boot, sneaker, jandal, stiletto (yes), cycle, dog paw or horse hoof, in addition to searching via geographical area.

The walks and rides featured are a mix of Thames-Coromandel District Council and Department of Conservation-managed trails, with a few privately-managed trails.

www.tcdc.govt.nz/coromandeltrails

Restricted fire season

Fire and Emergency New Zealand is moving Thames-Coromandel to a restricted fire season until further notice.

A restricted fire season means a permit is required to light an open-air fire.

The restricted fire season will cover all of the Thames-Coromandel District Council boundaries.

If you are planning on lighting an open-air fire, please head to www.checkitsalright.nz or phone 0800 658 628 to apply for a fire permit.

UPCOMING RETREATS & EVENTS

Bookings: www.manaretreat.com

JAN 5-11	Eyebody with Peter Grunwald
JAN 12-18	Sufi Retreat
JAN 20-25	DUPANZ Summer of the Soul – The Fullness of Being
JAN 30-1 FEB	Relax & Wellness Weekend with the Mana Team
FEB 5-8	Your Inner Retreat with Rachel Hunter & Renee Stewart
FEB 12-15	Reiki Retreat with Uli Brell
FEB 20-22	Yummy Yoga Retreat
FEB 26-1 MAR	Into Your Heart Retreat with Sacred Earth
MAR 6-8	Relax & Wellness Weekend with the Mana Team
MAR 10-12	Into The Green – A Herbal Medicine Retreat with Clio Meyer

COMMUNITY EVENTS

Open Floor Community Dance 27 Jan, 3, 10, 17 & 24 Feb
10:00-11:45am

be@manaretreat.com | 608 Manaia Road,
Coromandel New Zealand, 3581
+64 (07) 866 8972

FROGS LILY PAD

021 051 2649

FROGGY

027 815 2528

FABIEN

CONSTRUCTION

LICENSED BUILDING PRACTITIONERS
EST. 2006

EARTHWORKS

We have a wide range of earthmoving equipment, call us before you build for foundation works, driveways, landscaping and more.



Our Coromandel

Ngā mihi o te tau hou

~ HAPPY NEW YEAR ~



News from Thames-Coromandel District Council

January 2026

Vehicle access restricted at Coromandel Wharf

Bollards are in place on Coromandel Wharf to prevent vehicles going further than the wharf shed after a comprehensive safety assessment found significant structural damage.

The damage affects the western retaining wall in particular, putting the pavement at high risk of collapse under heavy loads.

Users who hold commercial and recreational licences with us or Waikato



Regional Council still have access to the causeway and we've issued keys for them to use the side jetties. Pedestrian access to the wharf remains open.

If you've been using the fuel pump at the end of the wharf to refuel your vehicles, you'll need to use alternative filling stations.

We are developing a repair plan and will provide updates as the work progresses. Thanks for your cooperation with the new safety measures as we carry out the work.



What's happening over Anniversary & Waitangi weekends?



KERBSIDE COLLECTIONS AND TRANSFER STATIONS

For year-round kerbside collection calendars, including summer peak collection dates from Christmas week to Waitangi week, check your local schedule at tcddc.govt.nz/bindays or pick up a hard copy at your local Council office.

Our seven refuse and recycling Transfer Stations are open daily over summer from 8.30am–5.30pm except Christmas and New Year's Day. They are open Anniversary and Waitangi Day. tcddc.govt.nz/rts



OFFICES | DISTRICT LIBRARIES

Our offices (including AA services) and district libraries will be closed on Anniversary Day, Monday 26 January, and Waitangi Day, Friday 6 February. You can still reach us 24/7 at 07 868 0200 or customer.services@tcddc.govt.nz



DOG RESTRICTIONS

Many of our beaches have summer restrictions on dogs. Look out for Council's traffic light signage and check the rules in your area at tcddc.govt.nz/dogownerguide



ALCOHOL BANS

Alcohol bans are in place over Anniversary and Waitangi long weekends. Check out tcddc.govt.nz/alcoholcontrol

tcddc.govt.nz/summerinfo



NEW COROMANDEL TRACKS AND TRAILS GUIDE

Rediscover the beauty of the Coromandel Peninsula on foot, by bike or with a four-legged friend. Our new digital guide makes outdoor adventures easy. Explore the Coromandel through interactive maps grouped by area, or by your choice of sole or journey type. It's packed with hikes with spectacular views; short, easy town walks exploring art and culture; paths to gorgeous swimming spots; mountain biking trails; and dog walking or horse-riding routes.



tcddc.govt.nz/coromandeltrails

CONSERVING WATER



It's easy to think of water as a free resource that won't run out but the population in some of our communities grows tenfold in summer. If we're smart about our water use, we can delay costly new infrastructure. Find out how at tcddc.govt.nz/water and check for local water restrictions at

tcddc.govt.nz/waterrestrictions

REFUSE AND RECYCLING



Northern Coromandel holiday visitors: Please take your refuse and recycling with you when you leave our northern campsites and drop it to Coromandel Transfer Station, 525 Hauraki Road.

THE 2026 COMMUNITY BOARD MEETING SCHEDULE WILL BE AVAILABLE SOON AT [TCDDC.GOV.TZ/MEETINGS](https://tcddc.govt.nz/meetings)



@ThamesCoromandelDistrictCouncil



coromandel_tcddc



Get our free eNewsletters!
www.tcddc.govt.nz/subscribe

tcddc.govt.nz

customer.services@tcddc.govt.nz
Private Bag, 515 Mackay St, Thames
Phone: 07 868 0200

rangatahi OUR CHILDREN

Coromandel Community Preschool

By Shivawn Elliott



Mrs Claus, Santa and Cleo at the Christmas Party

Nga mihi o te tau hou!

We hope you all enjoyed your Christmas break and are ready for a wonderful year ahead.

We finished off 2025 with our annual Children's Christmas Party. It was so lovely to see all our whanau come together and reflect over 2025. The weather was great, so we packed our picnics and headed to Tucks Bay and awaited a visit from Hana Koko. It was such an amazing

turn out and we would like to take the time to thank everyone who came along and made the day special for their tamariki.

In December we celebrated birthdays for Haere, River and Myra. We farewelled Rakairoa who is now off to start his school journey. We wish you all the best for your next chapter Ra. We also welcomed Hilux to the centre. Nau mai haere mai Hilux.

A massive thank you to everyone who supported our recent Christmas Raffle and thank you to our generous sponsors, Harbour View Motel, Four Square Coromandel, Pepper Tree, Star & Garter, Coromandel Garden Centre and Top Town Takeaways. All funds raised will be going towards upgrading resources for the tamariki at Preschool.

We will be taking a 3-week break over the Christmas and New Year period. Our last day of Preschool was Friday 19 December and will reopen again on **Monday 12 January**. We still have some spaces available on our over two's side, so we welcome you to come in and visit the centre when we return.

Thank you to our amazing community, whanau and committee for your ongoing support within the centre. We appreciate the mahi you put in creating a wonderful space for our tamariki.

Check out our latest education review at www.ero.govt.nz/review-reports/coromandel-community-preschool.

The centre operates Monday to Thursday 8am-4pm and Friday 8am-3.30pm. We are situated at 155 Pottery Lane (behind the Four Square). Please feel free to call in at any time for a visit



Colville Bay Preschool

By Emma Corner

COLVILLE BAY
PRE-SCHOOL

*Ka whāngai, ka tupu, ka puāwai
To nurture, to grow, to blossom*

Tēnā koutou. Merry Christmas, and a huge thank you to our amazing community! What a year it has been – your aroha, manaakitanga, fundraising efforts, and countless hours of volunteering have carried us through another wonderful year. We are deeply grateful for everything you've done to support us. You've truly made it amazing!

This year our preschool whānau gathered at Waikawau beach to celebrate our Christmas party, and what a lovely day it was! The sun was shining, the moana was sparkling, and everyone arrived with big smiles and even bigger baskets of kai to share. As soon as we arrived, the children ran joyfully toward the water. There was lots of fun swimming – splashing, kicking, floating, and laughing together. Some children chose to explore the shoreline, noticing shells, rocks, and tiny sea creatures. A group of curious explorers even went crab hunting, using gentle hands and watchful eyes. The children showed wonderful kaitiakitanga, knowing that we must care for the creatures we meet and return them safely to their homes. When it was time for kai, everyone came together on the sand to enjoy the delicious food. Everyone had brought so many tasty dishes, and it felt like a true hākari, filled with generosity and manaakitanga. Throughout the day, our tamariki demonstrated curiosity, confidence, kindness, and care for the environment. The beach was a place to learn, connect, and celebrate together as a community.

We wish everyone a Merry Christmas and a Happy New Year! If you're looking for a nurturing and supportive early childhood environment for your little one, we currently have spaces available for next year Tuesday to Friday.

We will be open from the **Tuesday 13 January** so please feel free to pop in, meet our friendly kaiako, and see what makes our preschool so special. We're open Tuesday to Friday, 8.45am to 3.00pm, including during term breaks. We offer 20 free ECE hours for children aged three and over, and WINZ subsidies and the FamilyBoost payment are also available.

Haere mai – we'd love to welcome you into our vibrant, caring, and connected preschool whānau. Open Tuesday to Friday, 8.45am-3pm including term breaks. 20 free hours for 3+ year olds and WINZ subsidies available.

No childcare fees charged for 2025.

Colville Bay Preschool 2391 Colville Rd 2391. All enquires please contact: senior-teacher@colvillebaypreschool.co.nz or phone; 022 645 3272

Coromandel Youth Group

At Hauraki House.

Coromandel Youth Group is for children aged 5-15yrs.

We provide a supervised, fun environment where kids can hang out with friends and participate in a wide variety of free choice activities. Parents just fill out a membership form and provide a packed lunch or money for tuckshop.

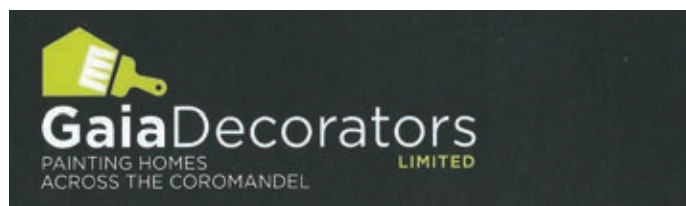
Holiday Open Times

Monday to Thursday 11am-4pm

Closed public holidays.

For more information, during open hours, call in, phone 0272179206 or contact us at coromandelyouthgroup@gmail.co.nz

Thank you! Alongside kind donations received, we are grateful for grants from: Lottery Waikato, Trust Waikato, COGS, D.V. Bryant Trust, Aotearoa Gaming Trust, NZ Community Trust, Star & Garter Hotel's Give a Little Pizza Sundays



Mark Gaia 021 295 5532 | 07 866 8157
COROMANDEL | gaiadecorators@gmail.com
www.gaiadecorators.co.nz

mahi toi ARTS

Driving Creek Pottery Doings No. 11

By Millie Godfery and Matilda Halley

Doings of an Apprentice Potter

Production pottery apprentice, Millie Godfery, shares her experience of life at Driving Creek:

I'm three months into my apprenticeship and loving how varied every day in the production studio is. My week could involve any number of things: digging clay from our clay pits and pugging it for throwing; making up glazes and applying them; learning to load and fire both wood and gas kilns; practicing throwing on the wheel.

One of the highlights so far has been helping with several wood firings, including the final staff firing for this summer, which I managed to get some of my first pots in. Earlier on, in my second week, I helped Matilda's wood firing, which was a quick submersion into the necessary resilience and fortitude required by this work. I'm steadily getting an insight into how important community is, not just in terms of hands-on support when it comes to things like firing, but also in regards to support accessing resources. With the local sawmill in Colville now closed down, it's been a pressing concern for potters at DCR as to how they will source reliable wood for firing. Luckily the Lions have been able to supply some and hopefully by next autumn our supplies will be back up ready for another season of firings.

It was also a privilege to be a part of hosting Ngā Kaihanga Uku in November, who brought their beautiful uku (clay) kaupapa to DCR and the wider community, holding daily workshops, evening talks at the community hall, and opening their Ahi Kaa exhibition at the DCR gallery, which runs throughout the summer.

Millie will be contributing to this column regularly, so keep your eyes peeled for future updates.

Resident artists in November were Anna Rees (Tāmaki), Mahalia White-McColl (Tasmania) and Saskia Bunce-Rath (Ōtautahi). You can read more about the residents at drivingcreek.nz/journal.

We have started listing our upcoming pottery workshops below this column. You can find more information, including the full line-up of workshops, by using the QR code or visiting our workshops page: drivingcreek.nz/workshops. We frequently update the offerings, so be sure to check in regularly!



Apprentice Millie Godfery pugging clay for the production team



Coromandel Art Group

By Lindsay Nicholls

Winding down for Xmas, the small group of us went out for Xmas lunch.

We will regroup in January ready for our Annual Exhibition starting on **Saturday 24 January to 8 February**.

There will be a range of paintings in different mediums and print, cards and crafts available for sale.

Open 10am to 4pm daily it's well worth the visit at Hauraki House.

Love to see you all and if you are thinking if joining, now's the time to see what we do. Come have a chat..

Merry Xmas in the meantime.



Coromandel Christmas Art Exhibition

Runs until Saturday 10 January at Hauraki House, Coromandel Town.

Artists exhibiting include: Michael Smither, Gian McGregor, Lindsay Garmson, Bronwynne Cornish, Denys Watkins, Rod MacLeod, Kim and Kevin Brett, Cindy Alger, Pete Sephton, Petra Meyboden, Allan Beaver, Kay Ogilvie, Maia Astwood, Tracy Johnson, Ian Webster, Fiona Tunnicliffe, Louise Penberthy, Jan Kocian, Annette Kaye, Tim Fuller, Iain Crichton, Fatu Feu'u, Barbara Von Seida, Yvonne Szabo, Iona Matheson, Carolin Hahn, Bob Drummond, Mary Lee, Matilda Halley, Callum Trudgeon, Stuart Spackman, Heather Grouden, Mike O'Donnell, Linley Huggins, Anneka Borren, Pamella Annsouth, Jenny Shearer, Joanne North, Tom Elliott, Millie Godfrey, Andrew and Jeannie van der Putten.

making friends

an exhibition of work by
robyn lewis &
sally tennent-brown

Hauraki House Gallery,
Kapanga/Coromandel township
February 14-22, 2026
10am - 4pm daily

Opens Friday 13th, 5.30 - 7.00pm

DRIVING CREEK UPCOMING POTTERY COURSES

Feb 16 | **5 Day Production Throwing**

Mar 21 | **2 Day Jug Making**
with Callum Trudgeon

Mar 27 | **3 Day Hand Building**
with Iona Matheson

Apr 6 | **5 Day Glaze Chemistry** Scan for more info or visit
with Ronald Boersen drivingcreek.nz/workshops



te taiao ENVIRONMENTAL

MEG

By Steph Parkyn

Summer Holiday Programme for January!

We are thrilled to bring you another fabulous line up of events for January.

Every Saturday from **Saturday 3 January**, we'll have the popular Clay Critters at the Shelly Beach Top Ten Holiday Park at 10am. Bring the kids to play with clay donated by Driving Creek, learn about some unusual native insects, lizards and frogs and let their imagination go!

In Kapanga/Coromandel Town we have the team at Driving Creek Sanctuary providing tours, a chance to explore and learn about the creatures that live in the predator proof sanctuary with games especially for kids, and a wider conservation tour featuring the fascinating history of Driving Creek.

Tuesday 6 to Thursday 8 January.

At Hauraki House Gallery from **12-14 January** we'll have a conservation exhibition with plenty of interest for both kids and adults, displays of taxidermied native birds and the predators we are targeting to protect them from, artworks on display from artist Libby McColl and photographer Anna Sephton, the Kauri Virtual Reality Experience



to try, and some special visitors... Annemieke Kregting is well known to many for her bird rescue and now works with endangered birds for DOC as well as being a mosaic artist, and she'll have a creative bird art project for us. Doug Ashby will tell us all about his beautiful variety of geckos and give us the opportunity to hold them too, not to be missed! And learn backyard trapping with our super experienced trapper and MEG chairperson, Lettecia Williams.

Further afield we have opportunities for nocturnal walks, painting rat traps, kids craft in Colville, meeting conservation dogs, botanical exploring and a flax weaving workshop with Nici Greulich. Come and explore the northern Coromandel this summer. All the details of these events, prices and booking info are in our brochure available around town or check out our website www.meg.org.nz.

Kiwi Avoidance Training

A friendly reminder to please watch your dogs around wildlife this summer. The manu on the beaches have chicks

at the moment and kiwi do live in the forests around our towns and houses. Any dog can inadvertently kill kiwi. We are providing Kiwi Avoidance Training for dogs on **Sunday 18 January** as part of our summer holiday programme, please arrange to have your dog trained if you bring them on your holiday or live locally. Thank you all for caring for our unique wildlife.

Have a wonderful holiday season and we hope to see you at one of our events.

Bookings and enquiries info@meg.org.nz and follow our facebook page to keep up with all the action! www.facebook.com/moehauenvironmentgroup www.meg.org.nz

UCLA

By Reihana Robinson

Our offering for our summer report comprises just two photographs of artwork by Edith Taylor – a beloved member of the Port Charles community who has since passed away but whose artwork graces many neighbour's walls or desktops in the form of hand water-coloured mementos such as this first one which was a posy painted in 2006.

And as the lavender is currently still blooming UCLA thought it appropriate to share an image by our beloved community member.

The second image is from a Christmas greeting card all those years ago and contains the wry humour and wit of an intelligent compassionate generous octogenarian, a person we all held dear – Edith Taylor.

On an electoral note sincere thanks to John Morrissey for his years of community contribution and welcome to new representative Robert Ashman and special thanks to all who stood for our local Board... you are the core of our local government.

So we wish all summer visitors safe and happy travels on our less than perfect shingle roads.

Please drive slowly and with care and we look forward to 2026—hopefully a year with less poison used to kill sentient wild creatures on the upper Coromandel.

We strive for more humane wild animal control.



Artwork by Edith Taylor





WWW.PARRBUILDERS.CO.NZ





YOUR LOCALLY OWNED AND OPERATED BUILDING COMPANY

Servicing the Northern Coromandel and surrounding areas

Specializing in high-end new builds & renovations

With expert craftsmanship, attention to detail and a trusted team, we bring your vision to life.

ABOUT US

Our commitment to customer satisfaction sets us apart. From concept to completion, we prioritize safety, quality, and strong working relationships every step of the way.

Solutions

- Luxury New Builds
- Premium Renovations & Extensions
- Decking and outdoor living spaces
- Insurance work



Let's Build Together!

Contact us today via our website
www.parrbuilders.co.nz
 Call us on 0277888043

Brett Parr is a licensed building practitioner and is also a member of the NZ certified builders association

Offset your energy costs & enjoy backup support with a battery storage solar energy system. Call the specialists now

GOOD ENERGY
SOLAR ENERGY SOLUTIONS

Phone 021 606835
Email: info@goodenergy.co.nz

SOLAR ENERGY

www.goodenergy.co.nz



Waiaro Sanctuary

By Ruby Smith, Director

Celebrating conservation achievements and community support

Waiaro Sanctuary is very pleased and grateful to our dedicated volunteer trappers and the local residents who have supported our project so wholeheartedly. Your help with trapping, providing access, and importantly, keeping your dogs away from sensitive areas has been invaluable to our conservation efforts.

Thanks to this collective effort, we have now removed over 100 feral cats, with two large feral cats recently trapped close to the dotterels' habitat. This demonstrates the ongoing need for vigilance – there's simply no room to let up on our trapping programme.

As a direct result of this work, our estuary now supports over 150 Pāteke (brown teal), representing one of the largest naturally occurring flocks on the peninsula. These birds have truly flourished. Additionally, the dotterels and oystercatchers have enjoyed another very successful breeding season, and a small flock of spoonbills has settled into our predator- and poison-free sanctuary. The increase in birdlife is unmistakable, and we are especially proud to report that we now have the largest number of kiwi residing here. All of this confirms that Waiaro Sanctuary's holistic approach—embracing the philosophy that “the whole is greater than the sum of its parts” – is both effective and sustainable.

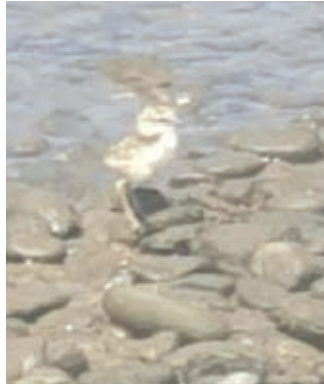
Recently, I was fortunate enough to capture a photo of a dotterel chick that paused just long enough for a quick snap – usually they are quick to scarp if people approach, and the parents become protective. It seems, however, that the birds are starting to recognise we are on their side.

Our sanctuary has also welcomed some remarkable visitors, including a sea leopard that stopped by for a rest for a couple of days before continuing on, and penguins, which are a common sight at certain times of the year.

Focusing on predator control rather than disturbing the wildlife has certainly yielded positive results. Our possum buffer across the peninsula is proving effective, with three main hotspots identified as entry points for possums onto the Northern Peninsula. To date, over 500 possums have been trapped at Waikawau alone, a key travel route for these pests.

We would also like to express our thanks to the Waikato Regional Council for supporting our buffer project and helping with trap purchases through the Small Scale Initiative Fund (SSIF) several years ago.

Thank you again to everyone involved and Merry Xmas.



Driving Creek Conservation Park

By Kate James



If you're wondering what lies beyond the rail tracks, ziplines, and pottery wheels, let me explain. Driving Creek is more than just a fun day out. It's a leading eco-tourism destination and a thriving conservation park. Every train ride, zipline adventure, and pottery purchase directly supports our team of passionate conservation staff and contractors working to restore the surrounding native forest.

The Conservation Park covers not only Driving Creek's own 24-hectare QEII covenanted property, but also extends across another 320 hectares of neighbouring private land and public conservation land. That's a huge area of native bush that is being actively cared for and brought back to life.

One of the key focus areas for conservation work is predator control. Possums, rats, stoats, and other introduced mammals have done a lot of damage to our native wildlife over the years. But with ongoing efforts and collaboration with local community groups and neighbours, these pests are being removed and controlled.

Keeping invasive pest animals under control, and removing environmental weeds, allows our very special native biodiversity to thrive. We protect key populations of native frogs, birds (including kiwi), lizards and invertebrates.

So next time you visit Driving Creek, whether it's for a pottery class, a rail tour, or a zip through the canopy, take a moment to really enjoy what's around you. That stunning native forest has been carefully nurtured and protected.



Beautiful wooden joinery

INCLUDING:

- NEW ARCHITECTURAL
- TRADITIONAL VILLA AND BUNGALOW STYLES
- RETRO-FITTING EXISTING JOINERY WITH DOUBLE GLAZING

email info@woodenjoinery.co.nz

te taiao ENVIRONMENTAL continued

Coromandel: Good for your health and good for the planet?

By Stephanie McKee.

Many of us on the Coromandel want to live in a healthy and toxin-free environment. But TCDC contractors continue to drench our roadsides with the herbicide glyphosate, even our children's playgrounds are ringed with yellow edges. A herbicide that is meant to be "kept out of aquatic systems" continues to be sprayed into drains and road edges bordering the sea and mangrove estuaries.

Ribbons of yellowed dried grass along the road verges create additional fire risk too in the hot, dry summer. One thoughtless person throwing a live cigarette butt out their car window into the dried up road verge... perish the thought!

The current tourism slogan for the Coromandel Peninsula, is "Coromandel – Good for your Soul". Ah yes, that is lovely, our souls certainly need nourishing and inspiration, but how about adding, "Coromandel Good for your Health, and Good for the Planet".

Over a million dollars of our rates is spent on spraying our road edges and drains with herbicide. Those doing it will be depending on the reassurance from our Environmental Protection Authority that this herbicide – and its associated spray drift – is not harmful to human or environmental health.

We are reliant on our Environmental Protection Authority for control of hazardous substances in our environment, and the licensing of herbicides. The problem is – can the EPA trust some of the published scientific studies, when some studies concerning the safety of glyphosate have been exposed as ghost written by Monsanto employees?⁽¹⁾ It is a murky world out there, when billions of dollars of profits are at stake.

For example, take the scientific journal Regulatory Toxicology and Pharmacology. This journal publishes peer reviewed articles that "involve the generation, evaluation, and interpretation of experimental animal and human data that are of direct importance and relevance for regulatory authorities with respect to toxicological and pharmacological regulations in society."

The editors of this journal have removed a significant safety review of glyphosate



saying there is evidence it was ghost written by employees of Monsanto. (1) This unethical behaviour is unfortunately to be expected from the manufacturer of a billion-dollar global industry wanting to protect and expand its profits.

Historically there has always been a time lag between the scientific evidence of harm and the banning of a toxin – just delve into the histories of DDT and 245-T to see this pattern.

The Environmental Law Initiative is currently challenging the EPA with an appeal in the High Court. (2) Glyphosate and glyphosate-based herbicides (such as RoundUp) have never undergone a full risk assessment in Aotearoa. "This appeal is about ensuring that the law works as intended, to protect people, ecosystems, and taonga species from harm," Dr Matt Hall, ELI's Director, Research and Legal.

So given this, how about our new Council

and Community Boards show some vision and foresight and enact the Precautionary Principle with respect to roadside spraying?

The Precautionary Principle means that if there is evidence of harm, then you wisely act on the side of safety rather than reckless risk-taking. However unfortunately, this principle is often only applied by authorities to policies when expedient. Criminal recklessness means you know there is the possibility of harm, but you carry out the action anyway.

There is now enough evidence regarding the cancer-causing properties of glyphosate, for responsible councils to act with wise precaution as well as a positive vision for our healthy future. A poison-free Coromandel would be something to be proud of and also would support the growth of eco-tourism.

References: 1. <https://www.science-direct.com/science/article/pii/S0273230099913715?via%3Dihub>
2. <https://www.eli.org.nz/cases/glyphosate>

Upper Coromandel Forest & Bird

By Kate James

Late 2025 a group of Forest & Bird volunteers had a wonderful time learning about our local stream health. Nathan McCauley from Colville Harbour Care, a local water testing guru, was engaged to teach the group how to test stream health, a session was held in the Karaka stream in the middle of Coromandel Town.

Nathan showed the group how to use a shmak testing kit. Shmak water testing refers to using the Stream Health Monitoring and Assessment Kit, a citizen science tool developed by NIWA (National Institute of Water and Atmospheric Research) to help communities check their stream health by measuring indicators like nitrates, phosphates, E. coli, pH, dissolved oxygen, clarity, temperature, and aquatic life. It empowers users to understand water health and can be used to track changes over time.

Results for the section of the Karaka stream were really healthy! There was excellent water clarity and an abundance of freshwater invertebrates – these are things like insects (or insect larvae), crustaceans (like kura), snails, worms and other small critters. A good range of these critters tells us it is a healthy stream. Although they are tiny these invertebrates play an important role in freshwater ecosystems by recycling nutrients as well as providing food to fish and other freshwater species.



COROMANDEL PLUMBING

(1986) LTD

1490 Tiki Road, Coromandel

CRAIG DUDSON

Phone/Fax 866 8814
027 482 1291



Plumbing, Drainlaying and Gasfitting

hākinakina SPORT

Coromandel Recreational Fishing Club

By Sarah Sanders (Treasurer)

The Christmas Members Only Fishing Competition had Average and Mystery Weights to give everyone a chance of winning, so this competition winners were:

Adult Average Snapper: Rob Davis = 1.58 kg
 Adult Mystery Snapper: Jo Robinson = 0.97 kg
 Adult Average Kahawai: Troy Evans = 1.85 kg
 Adult Mystery Kahawai: Troy Evans = 1.24 kg
 Adult Average Trevally & John Dory: None weighted in
 Adult Average Paoroe: Sarah Sanders = 0.91 kg
 Junior Average Snapper: Phoebe Bromwich = 1.565 kg
 Junior Mystery Snapper: Phoebe Bromwich = 1.00 kg
 Junior Average and Mystery Kahawai: None weighed in
 Junior Average Other Species: None weighed in
 Under 6 Heaviest Yellowtail: Tucker Evans = 0.13 kg
 Under 6 Heaviest Piper: None weighed in
 Under 6 Heaviest Other Species: Tucker Evans = 0.265 kg

The Christmas Party was a hit with Santa making an appearance and the food was great, thanks to everyone at the Top Pub.

Upcoming competitions are "Anniversary Weekend Tournament"

Sunday 25 January, which we will be having a new format – Doubles Competition, further information to come soon.

"Classy Chicks" – **7 March** and the dress up letter is "A".

We are looking for sponsors for the Classy Chicks, as usual anything big or small and there will be a good advertising platform. Further information on this competition coming soon.

CRFC has a Marquee to Hire Out, \$350 for the Marquee, \$150 to Assemble/Disassemble includes insurance, for 3 days. Also, 10 x long tables and 40 x chairs for an additional \$150.

January Fish of The Month is: adults – snapper and juniors – piper.

Remember to have fun but be safe on the water.

Coromandel Croquet Club

By Raewyn McKinney

I'm sure we are all looking forward to a wonderful warm dry summer, in fact perfect croquet weather!

We must have the best croquet club in the country; it is a pleasure to spend the morning in such beautiful peaceful surroundings along with some lovely people.

We offer good scenery, good exercise, good company, good competition; what more could anyone ask for?

If you would like to try croquet, our summer hours are 9.15am on Tuesdays and Fridays; on Tuesday we normally play "association croquet" and on Friday "golf croquet", but this can be adapted depending on the people attending on the day.

We provide all the equipment and a period of coaching before you need to commit to joining the club. Casual players are welcome to come along for a payment of \$5 per day. If you would like to join us, contact Lyn on 027 466 2661 for more information.

The club is situated in Woollams Ave next to the Bowling Club.



Golf Croquet

Ride Coromandel

New park-over property for NZMCA members – A quiet base for campers, riders, dog lovers and trail explorers

There's a new way to enjoy Coromandel Town's growing recreation hub. Ride Coromandel Bike Park has opened its own Park Over Property (POP), offering certified self-contained campers a peaceful place to stay within the bike park itself and immediate access to the trails and facilities that make this space so well loved.

Located inside the bike park, the POP gives visitors a unique opportunity to park up and step straight into adventure. From here, campers can ride directly onto the Medlock and Harry Trails, wander across to the dog agility park, enjoy the pump track and jump lines, or simply use the site as a quiet alternative to more crowded camping areas.

The POP is intentionally low-impact and community-focused. Certified Self-Contained vehicles (yellow warrant card accepted) may stay for up to three consecutive nights, with a maximum of four vehicles allowed each night to maintain a relaxed, safe environment for all park users.

Campers are asked to park in designated spaces only, keep noise to a minimum, respect other visitors, and help care for this shared recreation space. Dogs are welcome but must remain under control and cleaned up after. All rubbish and recycling must be taken offsite to the nearby Hauraki Road Refuse Centre.

Payment is easy via the Tap-to-Pay QR code, and every dollar goes directly back into the ongoing maintenance and development of Ride Coromandel – supporting better trails, youth programmes, volunteer work, and future upgrades for the community.

Ride Coromandel extends its thanks to the Thames-Coromandel District Council for granting approval for this initiative. The POP is another example of council and community working together to expand accessible, local recreation opportunities.

The carpark closes from dusk to dawn, with vehicles required to leave by 10am and welcome to return after 5pm.

Whether you're here to ride, walk, run, play with the dog, or simply enjoy a quiet base close to town, the new Park Over Property offers a relaxed way to experience everything the bike park has to offer.

Nap like a legend. Ride like a local. Support the park that supports you. Scan the QR code on-site for payment and further details.



**CORO
GYM**
COROGYM@GMAIL.COM

Classifieds

Classifieds cost 30 cents per word – please email your words to corochronicle@gmail.com or call/text Debbie on 021 235 6648.

PROFESSIONALS

A COROMANDEL PLASTERER. For new homes and all renovation requirements I offer 25+ years' experience for a professional plastering finish. Doug Marsters 022 019 9255.

ALUMINIUM JOINERY MAINTENANCE Locks, handles, hinges, wheels. Call or text Mike, Coromandel Glass 027 661 0190.

BALLET CLASS Silver Swans for Adults. Venue: Coromandel Citizens' Hall, Wednesdays, 10am to 11.15am. \$15. Phone Marilyn Swan 027 336 5263. Royal Academy of Dance - Life Registered Teacher. Silver Swans licensee. Visitors are welcome.

BLINDS, CURTAINS, SCREENS, AWNINGS & SHUTTERS. Please phone or email Whitianga Flooring Xtra for your free in-home consultation (07)8662836 or sales. whitianga@flooringextra.co.nz

BRICK AND BLOCK LAYER. Laurie Gordge (07) 866 8200, 027 494 9573, buddy10@xtra.co.nz.

BRICK AND BLOCK LAYING SPECIALISTS. L.B.P. Phone Joel 021 0234 0210.

CARPENTER WANTING WORK. Alterations, new houses, additions, no job too small, licensed building practitioner. Ph 021 675 575.

COROMANDEL GARAGE DOORS. Ph: Gerry Packo 022 453 2188. New installs, new motors, new remotes, door servicing, new parts, we do it all. E: corogaragedoors@gmail.com; W: www.corogaragedoors.co.nz.

COROMANDEL HONEY LTD. Local beekeepers. Honey for sale and manuka sites wanted. Call Evan on 021 533 826.

COROMANDEL STUMP GRINDING. Local operator based in CoroTown. Contact now 027 451 2224 or email dynamictreecare@gmail.com.

FLOOR SANDING & SOLID TIMBER FLOORING INSTALLATION. Please phone or email Whitianga Flooring Xtra for your free measure & quote (07)8662836 or sales. whitianga@flooringextra.co.nz

GAIA DECORATORS Your Professional Interior, Exterior Painting Service. Painting Homes across the Coromandel since 2010. The Professional Finish for every Building. Ph Mark for your free Quote 021 295 5532 .

GENERAL HOUSE & PROPERTY MAINTENANCE & HANDYMAN SERVICES. Phone Mike 027 240 9084. Coromandel and surrounding areas.

GIB STOPPER – RICHARD FIELD. Local and coastal. Ph 029 778 8645.

GIB STOPPER/PAINTER. Alpha Drywall, Geoff, local 022 027 0290.

GLASS REPAIR Call or text Mike Coromandel Glass 027 661 0190.

HEAT PUMPS. Sales and installation of Mitsubishi and Fujitsu heat pump/air conditioning. Based in Kuaotunu. Call Bill for a free no obligation quote 027 271 4803. www.dynamicelectrical-whitianga.co.nz. Warm or cool a medium sized bedroom with a Mitsubishi heat pump. Starting at \$2000 installed.

NEED SUPPORT AT HOME? My name is Maria and I am an ex registered nurse and I live in Coromandel, Monday-Friday. I'm a kind, helpful and mentally strong person who can do personal care and support work for people in their home. Daytime and/or nighttime. Maria Utting: mariautting@gmail.com 021 677 239.

POOL QUEEN LTD. Mobile Pool and Spa Cleaning Service 027 316 3384.

PROFESSIONAL PAINTING AT FAIR LOCAL RATES. Interior and exterior work done with care, clarity and respect for your space. Free quotes. Call Thomas 028 400 4120.

RIDE-ON MOWERS. Repairs and servicing at Papa Aroha. Pickup and delivery can be arranged. Ph Mike 027 223 7919.

ROOF KING LTD. New roofs, re-roofs, leaks, spouting, downpipes, and general maintenance. Ph Eli 021 160 6790.

SOLAR SYSTEM DESIGN AND INSTALL. Good Energy your local solar specialists based in Whitianga. Ph Simon 021 242 3394.

TILE INSTALLATION. Please phone or email Whitianga Flooring Xtra for your free measure & quote for all your tile supply & installation needs (07)8662836 or sales. whitianga@flooringextra.co.nz

VINYL LAYING. Best price 027 350 9242.

WEBSITEGUY – STEPHEN HUTTON – for new websites, updates, hosting and domain names. Call: 027 585 3311. Email: steve@websiteguy.co.nz; Web: websiteguy.co.nz

FOR RENT

AIRBNB HOLIDAY ACCOMMODATION AVAILABLE at Abby's Healing Haven, sleeps five in a separate three-bedroom house, walking distance to Coromandel Town, private, charming cottage with everything provided and a new spa bath on the back deck. Details, photos and AirBnB booking link on www.abbyshealinghaven.com

BOAT HIRAGE 5M RAMCO GETAWAY. Suitable 2 persons. Day skippers certificate required. Enquire for further details. Mark 021 295 5532.

SECURE SHED SPACE FOR RENT - \$60.00 per month Coromandel Flying Club Perfect for someone who needs a bit more space, approx. 6x4 meters. Location: Coromandel Flying Club, 1735 Ladies Mile, Coromandel. Availability: now. Description: - Clean, dry, and well-maintained - Ideal for storage for a car, tools, boxes, small equipment or hobby storage, etc. key access and power available. Notes: No hazardous materials, chemicals, or anything with strong odour. Access 24/7. If you're interested or want to come take a look, please contact us at info@coromandelflying.co.nz or phone Club President on 021 464 273.

FOR SALE

COROMANDEL FLOWERS. For all of your fresh flower needs contact Elisabeth 021 211 9556.

FIREWOOD DRY! Delivered Coromandel Town and surrounding areas, good rates, phone/text 022 635 2841.

SHED 2.50X2.50M, front height 2.40m, back height 2.24m, board & batten, iron roof, glass door, wired for 2 power points and 1 light. Needs hi-ab to move at purchaser's expense, \$2,200. Ph/text 021 252 3742.

HEALTH & WELLNESS

ABBY'S HEALING HAVEN 021 352 486. Chakra and energy clearing, crystal calibration 90 minutes - \$140, appointments via video link or in person. Organic Ayurvedic facial massage, 30 min - \$55. Breakthrough Tapping session, 60 min - \$100, an effective self mastery method for dealing with all stress and anxiety also self sabotaging behaviors. Online or in person. Intuitive Tarot and oracle reading, 45 minutes - \$60. See more at www.abbyshealinghaven.com.

CONTACT C.A.R.E COROMANDEL. Local clinic held every Friday at Coromandel Independent Living Trust between 9am – 3pm. ConTact C.A.R.E can help with Headaches/migraines/concussion, Back and neck pain, Sports injuries, Old unresolved injuries, Chronic and acute pain, Range of movement. To find out more or to book an appointment please contact Elly Smith on 027 311 7505.

SITUATIONS VACANT

MUSSEL BARGE DECKHANDS WANTED. Please contact Jake Bartrom, Gulf Mussel Farms for any information or application Phone or txt: 022 127 0883.

MUSSEL BARGE SKIPPER WANTED. SRL 24m or equivalent. Please contact Jake Bartrom, Gulf Mussel Farms for any information or application Phone or txt: 022 127 0883.

COLVILLE JUNCTION CHARITABLE TRUST HAS VACANCIES across a mix of fixed-term and permanent roles, including: Youth Community Development Worker, Community Worker, and Living Heritage Project Coordinator. Details at: www.colvillejunction.co.nz Applications close 5pm, Tuesday 24 February 2026.

WANTED

VEHICLES WANTED Dead or Alive. Cars, vans, utes, Trucks. Call 0800 333 398 or text 021 344 449.

WANTED: HOUSE FOR REMOVAL Are you demolishing or removing a house? We are wanting one to relocate to Coromandel Town. Contact: Jamie 022 131 5513.

WORK WANTED

ARBORIST - Professional, Equipped & Insured for quality tree work. Dynamic Tree Care 027 451 2224.

TREE SERVICE. Dismantling or pruning. Free quotes. Call Jeremy Haszard 027 421 0603.

OTHER

AGE CONCERN Falls Prevention Strength and Balance exercise class for seniors. Coromandel Gym, Pottery Lane Tuesday and Thursday, 10am, \$2. Vickie (07) 866 7894.

PINK DRINKS two hour bi-monthly lesbian and gay social gatherings. For further information phone Jules 027 392 3221

Coromandel Town weekly and monthly meetings

Every Monday

Step Aerobics at Coro Gym.....	8am
Coromandel Hikers' Group, Hauraki House, Murray Brown (07) 866 8602.....	9am
Monday Walkers, Woollams Ave car park north end, Tracy and Peter Kendall 027 333 4722.....	9am
Gold Fit at Coro Gym.....	9.30am
Rummikub at The Club.....	1-4pm
Line dancing, Anglican Church Hall, Jeni Mudgway 021 022 75341.....	3-4.30pm
Coro Superstars, a performing arts group for 6-13-yr-olds, Anglican Hall, contact Claire 021 653 650.....	5pm
Bridge, St John rooms.....	7pm

Every Tuesday

Coro Walking Group, meet outside The Bizarre, Ruth 027 338 3545	8.30am
Croquet Club – Association Croquet, Woollams Ave, Lyn 027 466 2661 (winter hours)	9.45-12.15am
Age Concern seniors' exercise class, Coromandel Gym. \$3 Vickie 027 417 7077.....	10am
Yoga for everyone, Colville Hall, Kate 021 125 3152	10am
Playcentre, Woollams Ave.....	10.30am-1pm
Na Ihowa Ahau after-school kids club (term time only), Anglican Hall, Anita 027 259 1085.....	3.15-4.45pm
Tai Chi, Waikato Events Centre (above the swimming pool), Christina 021 113 4768.....	5-6.15pm

Every Wednesday

Step Aerobics at Coro Gym.....	8am
Pastel Artists Coromandel, Rose's Studio, contact Allan (07) 866 8053.....	9am-12pm
Gold Fit at Coro Gym.....	9.30am
Ballet Class For Adults, Coromandel Citizens' Hall, \$15 per class. Marilyn 027 336 5263.....	10-11am
Coromandel Home-school group, Julene 020 4060 8102	12.30pm
Kung Fu, Coromandel Hospital	5-7pm

Every Thursday

Coro Art Group, Coro Flying Club, Lindsay (07) 866 7799.....	9am-12pm
Age Concern seniors' exercise class, Coromandel Gym. \$3 Vickie 027 417 7077.....	10am
Free Guided Meditation, Havalona Pyramid	10-11am
Movement for Equanimity (MFE), a well-being fascia movement class, contact Judy 021 0200 7550.....	3-4pm
Line dancing, Anglican Church Hall, Jeni Mudgway 021 022 75341	3-4.30pm
Coromandel Tennis Club "club day"	4.30pm
Yin Yoga with Toni, Event Centre, \$10-\$20, limited spaces please txt to book a space, Toni 020 4076 1526	5.30pm
Coromandel Narcotics Anonymous 12 step addiction recovery meeting, at 100 Pound St (orange house). Contact Rosie 027 577 7716	6.30-7.30pm
Free drop-in Dharma talk or video at Mahamudra	7-8.30pm

Every Friday

Step Aerobics at Coro Gym.....	8am
Community Gardens volunteer day	9am-12pm
Yoga for everyone, Anglican Hall, Kate 021 125 3152.....	9am
Croquet Club – Golf Croquet, Woollams Ave, Lyn 027 466 2661 (winter hours)	9.45-12.15am
Chess Club, Weta Cafe, Mike 027 304 9252	9.30am
Playcentre, Woollams Ave.....	9.45am-12.15pm
Coromandel Bowling Club social evening at the Club	3.30-7pm
Coromandel Flying Club social gathering, all welcome	5.30pm

Every Saturday

Coromandel Homegrown Market, Anglican Church Hall, 1170 Tiki Rd....	9am-1pm
RSA Coromandel, RSA Club Rooms Woollams Ave. President Gary Pettett 021 061 0852	3.30-7pm

Every Sunday

Anglican Church Service	10am
Coromandel Tennis Club "club day"	2pm

Monthly

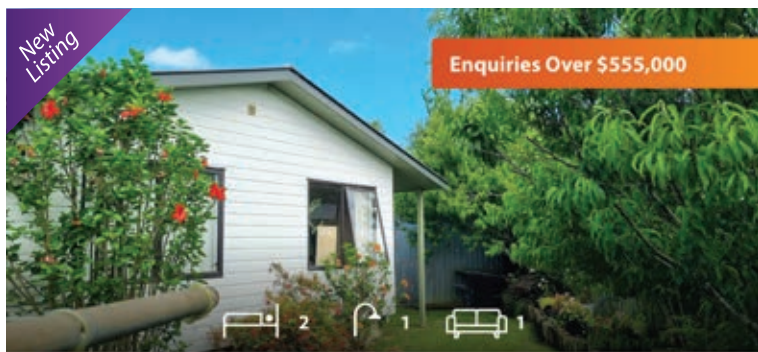
1st Mon – Coro Patchwork & Quilters, St John rooms, Michaela Green 021 0287 1879	9.30am-3.30pm
3rd Mon – Coro Patchwork & Quilters, St John rooms, Michaela Green 021 0287 1879	9.30am-3.30pm
2nd Tues – Cancer Support Group, St John rooms John Walker 027 482 0435	10am
1st Wed – Coro Embroiderers' Guild, St John rooms, Sandy Morris Ph 021 815 667.	10am-3pm
1st Wed – Lions dinner meeting (winter time), St John rooms. Sue Hughes 021 142 1124	6pm

1st & 3rd Wed – Car Club meeting at Club Rooms, Woollams Ave, Bruce 027 249 0878	4pm
2nd Wed – Garden Circle. Jeni Mudgway 021 0227 5341	1pm
3rd Wed – Lions business meeting (winter time), St John rooms. Sue Hughes 021 142 1124	6pm
Last Wed – Coromandel-Colville Business Association networking meeting, Combined Clubs, Woollams Avenue, everyone welcome (Feb-Nov).....	5pm
Last Thurs – Green Drinks at Star & Garter	5pm
3rd Fri – Dances of Universal Peace, The Pyramid, Sue 022 159 1571	10.30am
Last Friday – Quiz night at the Club, from Friday 26 September until next April	7-9pm
1st & 3rd Sun – Church Service at St Andrew's Church, Rings Road	10am

If your meeting has been omitted, please email Debbie at
corochronicle@gmail.com with the subject "meeting" or
txt/ph 021 235 6648. Please include contact name and phone number.

Advertisers' directory

Company	Page
Ann Kerr-Bell – Natural Medical Centre	10
Barry Brickell Play With Clay Day	8
Boot Scootin	12
Cape Civil	18
Car Club - car fair	32
Coro Gym	27
Coromandel Concrete and Landscape Services	14
Coromandel Lifestyle Village	5
Coromandel Marine Farmers' Association	10
Coromandel Plumbing (1986) Ltd	26
Coromandel Taxi	12
Driving Creek Railway & Potteries	23
Dynamic Electrical	2
Dynamic Tree Care	18
Fairview Thames	4
Fish, Dive, Hunt	16
Four Square Coromandel	11
Frogs Lily Pad Construction	20
Gaia Decorators	22
GD Haulage	18
Good Energy	24
Guthrie Bowron	11
Harcourts	17
Hauraki Taxation Service Ltd	14
HD Diggers	4
Himalaya Shop	3
House for sale – Te Kouma	13
House of sale – Top Town Retreat	15
ITM	8
James and Turner	16
James Drainage '97 Ltd	7
Johnston Fencing	18
Llandem Consulting Engineers Ltd	8
Making Friends exhibition	23
Mana	20
Matt Hobbs Plumbing & Drainlaying Ltd	19
Michael Wood Builders Ltd	2
Parr Builders	24
Peninsula Electrical Services Ltd	4
Peninsula Pest Services	10
Peter Grunwald	6
Purnell Lawyers	19
Revell Architectural Design	16
Richardsons Real Estate	9
Ruamahunga Bay Joinery	25
Scott Simpson MP	14
Star & Garter	7
TCDC	21
Trinity Network	31
Twentymans	6
Waitaia Nursery	2
Whitianga Flooring Xtra	3



Enquiries Over \$555,000

Coromandel 395 Kapanga road



Asking Price \$1,750,000

Coromandel 1757 Manaia Road

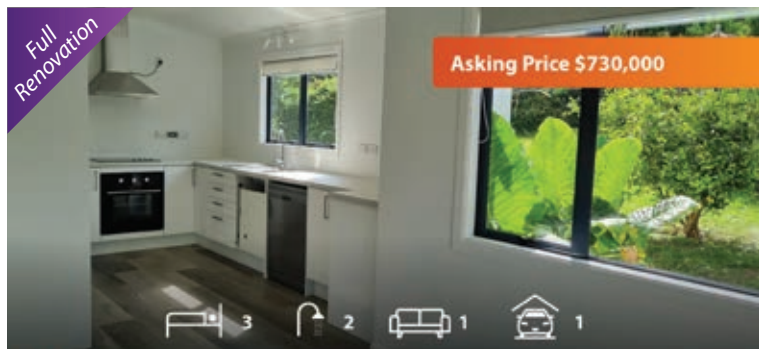
<https://www.trinityrealestate.co.nz/property/1757-manaia-road-coromandel/>



Asking Price \$1,600,000

Coromandel 290 Wyuna Bay Road

<https://www.trinityrealestate.co.nz/property/290-wyuna-bay-road-coromandel/>



Asking Price \$730,000

Coromandel 27 Taurua Place

<https://www.trinityrealestate.co.nz/property/27-taurua-place-coromandel/>



Asking Price \$125,000

+GST(if any) +SAV

Coromandel Fish Dive and Hunt

<https://www.trinityrealestate.co.nz/property/95-kapanga-rd-coromandel/>



Enquiries Over \$740,000

Coromandel 35 Mary-Ellen Place

<https://www.trinityrealestate.co.nz/property/35-maryellen-place-coromandel/>



1204A Whangapoua Road
Coromandel



2565 Rings Road
Coromandel



68 Watt Street
Coromandel



1170 Kennedy Bay Road
Coromandel



97 Kowhai Drive
Coromandel



22 Callaway Lane
Coromandel

“WE VALUE PEOPLE, NOT JUST TRANSACTIONS”.

Contact us for a free confidential appraisal and we can discuss our very competitive commission rates.

Call into our office at 65 Wharf Rd



Rob Keatley
REAL ESTATE CONSULTANT

0275 777 424

E: rob.keatley@trinitynetwork.co.nz



Becky Greenhill
REAL ESTATE CONSULTANT

021 069 4428

E: rebecca.greenhill@trinitynetwork.co.nz

Coromandel Car Fair

1 February 2026

11am - 2pm

All kinds of cars, trucks and bikes on display.

Donation entry.

All proceeds go to the local RSA Welfare Fund.



**Live music, sausage sizzle, mussel fritters,
ice cream trucks and more!**

**Coromandel Rugby Club grounds,
Coromandel (access via Pound St)**



Got wheels you want involved?

Contact: Bruce 027 249 0878

OR ccwaikato@xtra.co.nz



Sponsored by: Coromandel Diesel,

**James & Turner, Coromandel Fish Dive Hunt, Star & Garter, Pepper Tree, Coromandel Liquor,
TCDC, Naughty Bean Coffee, Coromandel Town Supply**