

October 2025  
Volume 29 Issue 10

# Coromandel Town Chronicle

[www.coromandeltownchronicle.co.nz](http://www.coromandeltownchronicle.co.nz)

The community magazine for Coromandel Town and surrounds since 1996

FREE  
Community Magazine

## The ferry is coming back!

— see page 3



Colville Festival PG 7



Open Studios Arts Tour PG 30





## **Haere mai. Welcome to the Coromandel Town Chronicle**

**View each Chronicle  
issue online at**

**www.coromandeltownchronicle.co.nz**

Cover photo: The previous Auckland to  
Coromandel Town ferry service in operation  
(photo taken in 2010)

The Coromandel Town Chronicle is  
published by Jude Publishing Ltd. It is  
delivered free to the Coromandel Town  
area.

For advertising please email Debbie on  
corochronicle@gmail.com or phone 021 235  
6648.

If you have any news stories that you'd like  
included please email corochronicle@gmail.  
com. If you are not sure how to put an article  
together for publication then find tips and  
advice on the website:  
www.coromandeltownchronicle.co.nz/html/  
guidelines.html

The Coromandel Town Chronicle is open for  
everyone to contribute, however the editor  
reserves the right to select the articles and  
letters that are published and edit them for  
clarity and space.

The Coromandel Town Chronicle is printed  
with vegetable oil based inks by Print House  
Ltd, Hamilton. An accredited FSC and PEFC  
printer.

**Deadline for the next issue is  
4pm Tuesday 21 October.**

**Send your letters, articles and  
advertising to  
corochronicle@gmail.com**

Letters 350 words max.  
and articles 600 words max.

**Live out of town and would like to  
receive a printed copy?**

Annual subscription costs \$57 (incl. GST)  
NZ postage only. See contact details  
above.

Or download a PDF copy from  
www.coromandeltownchronicle.co.nz

Disclaimer: The publisher and its editors  
of the Coromandel Town Chronicle shall  
not be responsible in any way for opinions  
expressed in letters and articles contained  
in the Coromandel Town Chronicle or for  
loss or damage suffered by anyone in  
reliance upon the information contained  
therein. Further, no endorsement of any  
product or service featured or advertised in  
the Coromandel Town Chronicle should be  
implied or assumed.

ISSN: 1178-721X (Print), 1179-4895 (Online)

### **Emergency**

Call 111. AED's in Coromandel Town: Fire  
Station, Ambulance Station, Four Square,  
Coro Family Health, Bowling Club/RSA,  
Te Korowai and Phoenix House. Although  
AED's are important, St John say performing  
continuous chest compressions/calling 111  
takes priority.

## ..... Editor's comment .....

I think the whole town is excited that the ferry is coming back for the summer season  
(see article on page 3).

When did Coromandel Town first get a ferry service? I have been sent a copy of a  
newspaper article from November 1996 saying that a ferry service was due to start  
soon, they planned to sail into the town wharf at high tide and Hannaford's Wharf at low  
tide. The article states "It will sail from Coromandel to Auckland twice a day, with the  
first sailing at 7am to cater for the Auckland workforce". I'm not sure how long they did  
two return trips as by the time I moved to Coromandel in 2004 there was only one return  
a day – not helpful for me to get to Auckland for work at the time.

The ferry starts at a great time when the coast road will be closed for a week (see  
page 25). I wish the new operators success, and thank the Business Association in all  
their hard work getting the ferry reinstated. Have a good month..

*Debbie*

## ..... Letters and opinion .....

### **No to spraying**

Dear Editor,

It's embarrassing how TCDC spray our roads with poison as well as Higgins and Waka  
Kotahi. Please send a letter to TCDC to complain. They are causing more slips by taking out  
the fundamental base of a hill out with toxins, stopping lichen, moss and nature to weave a  
strong barrier to erosion.

Top main reasons to stop using glyphosates (Roundup) along native bush roads:

1. Harm to native flora – Glyphosate doesn't discriminate between weeds and native plants.  
Spray drift or runoff can damage seedlings and undergrowth that are essential for forest regen-  
eration and biodiversity.

2. Toxicity to native fauna – Residues can harm insects, amphibians, and soil organisms  
that play vital roles in healthy bush ecosystems. Loss of insects also impacts birds and other  
wildlife higher up the food chain.

3. Soil and water contamination – Glyphosates can bind to soil particles and leach into  
waterways, polluting streams and wetlands near bush roads. This affects aquatic life and can  
disrupt fragile native ecosystems.

4. Development of superweeds – Frequent use of Roundup leads to herbicide-resistant  
weeds, making long-term control harder and forcing heavier chemical use – a cycle that  
further harms the bush environment.

5. Human and community health concerns – Roundup has been linked to potential health  
risks such as cancer and endocrine disruption. Spraying along public bush roads exposes  
walkers, cyclists, and nearby communities to chemical residues.

From

Neera Giri, Coromandel

### **Our beaches have gone to the dogs**

For more than 10 years there has been problems on Little Bay beach with the demand from  
the public, residential owners, parking of tractors and dogs. The beach that is only about 600  
metres long is also a high priority area for wildlife including dotterels.

TCDC reviewed their Dog Bylaw in 2023. I objected to the settings for Little Bay because  
I couldn't see anything for the protection of the wildlife. Council offered to put in place  
temporary dog restrictions over the nesting season. However, I discovered that the Bylaw did  
not provide for wildlife at most beaches in our Coromandel Colville ward.

As we approach the nesting season, I thought it justified to take this issue back to TCDC.  
The Dog Bylaw must comply with Dog Control Act.

The Act basically tries to allow the public, dogs and wildlife to live in harmony. Not easy!  
The primary settings are to protect the public and wildlife from dogs by giving dogs their own  
priority exercise area. The Act requires Councils to designate prohibited areas, exercise areas  
and a shared area where dogs are on leash.

In my view the prohibited and exercise areas should be fixed.

TCDC have designated most of our entire beaches as dog exercise areas. They have  
effectively increased risk for the public and wildlife. The beaches belong to the dogs. If you  
are afraid of dogs, then you leave the beach, not the dogs. Same applies to wildlife.

The Bylaw is confusing but TCDC's 2023 Brochure dog-control-brochure-2023-web.pdf  
makes it clear that dogs have priority.

I want to see a happy Little Bay beach. The settings by TCDC invites conflict. Only they  
can fix this by ensuring their Bylaw complies with the Act.

Our beaches are part of our heritage. Public safety on beaches has been reduced. Wildlife  
is not considered. I expect better from our Council.

Have your say at our local elections.

Regards,  
Peter Pratt

Email letters and opinion pieces to the *Coromandel Town Chronicle* corochronicle@gmail.  
com. Contributions should be kept short, and should not exceed 350 words. The editor  
reserves the right to reject letters or edit them for clarity and space.

# The ferry is back – Coromandel's community spirit makes it happen!

By Aaron McFarlane  
of Coromandel-Colville  
Business Association

After months of dedicated engagement, planning, and community feedback, the Auckland-Coromandel ferry will officially return this Labour Weekend. Its successful reinstatement is a shining example of what can be achieved when local voices are heard, and when collaboration between community, council, and economic partners comes together with a shared vision.

The return of the ferry has been one of the most talked-about topics in our town over the past year. With strong community spirit and persistence, the case for reinstating the service was carried forward to ensure Coromandel remains accessible and connected. This success owes much to the joint efforts of the Coromandel-Colville Business Association and Thames-Coromandel District Council's Economic Development team, playing pivotal roles in pulling together the information, feedback, and support needed to get the trial service across the line. Their energy, commitment, and belief in the potential of the ferry for our community cannot be overstated.

We also acknowledge and thank Explore Group, who have stepped up and taken on the delivery of the service. It is heartening to know that a New Zealand-owned company has taken charge of this project, recognising the importance of the connection between Auckland and Coromandel. Their commitment to making this trial a reality is deeply appreciated and is a crucial part of this success story.



The trial service, which will run through until April, is a vital opportunity for Coromandel. It is more than just a transport link – it is a gateway that brings visitors, families, and opportunities into our town. Local businesses will benefit, with ferry passengers choosing to dine, shop, and stay here. Accommodation providers, retailers, and hospitality venues all stand to gain from the steady flow of visitors arriving directly into the heart of Coromandel.

The ferry's return is also being celebrated beyond our community. TCDC has entered this initiative into the Economic Development New Zealand (EDNZ) Best Practice Awards in the Collaboration category. This award celebrates outstanding partnerships between two or more organisations that have joined forces to achieve significant positive economic outcomes. The nomination recognises how the combined efforts of council, community, and operators have produced results far exceeding what could have been achieved individually. It highlights the power of strategic alliances in driving growth, prosperity, and resilience.

But the success of this trial does not rest solely on the work already done. Its future depends on us – the local community. To secure the ferry as a permanent service, it is critical that the community continues to support it, spread the word, and encourage visitors to make use of it. Every ticket purchased, every trip taken, helps demonstrate that the service is viable and valued.

The ferry is not just about boosting business; it is about strengthening the lifeline that connects Coromandel to Auckland and beyond. It means easier access for families visiting loved ones, more options for weekend escapes, and a sustainable transport link that eases pressure on our roads. It also represents resilience – showing how our community, when faced with a challenge, can work together to find solutions and achieve



The first CCBA ferry meeting



Jeni Ashman of CCBA, speaks at a meeting

results.

This achievement is a credit to everyone who attended engagement sessions, shared their feedback, voiced their support, and believed in the value of the ferry. It highlights the best of Coromandel: a community that pulls together, values connection, and looks to the future with optimism.

Now, we have the chance to build on this momentum. The ferry's future is in our hands. If we back it, use it, and continue to show how much it matters, we can secure this essential service for years to come.

So, whether you're planning a trip to Auckland, welcoming friends and family, or just wanting to experience the joy of arriving home by sea, let's make the most of the ferry's return. This trial is our opportunity – let's ensure it becomes a permanent part of Coromandel's future.

Services start on Friday 24 October. See timetable and register your interest at [www.exploregroup.co.nz/auckland/coromandel-peninsula/](http://www.exploregroup.co.nz/auckland/coromandel-peninsula/)

**Is your tank  
CLEAN?**

**TANK CHECK:** **\$FREE**  
**Free, no obligation, system check!**

**TANK CLEAN:**

- No-drain tank clean & sterilise **\$350**
- Sterilise impotable tank water **\$100**

**Is your water  
SAFE?**

**FILTRATION SYSTEM:**

- Remove sludge, bacteria, bad taste & smell
- Triple 10" filtration system **\$1200**

**UV TREATMENT SYSTEM:**

- UV sterilisation + Triple 10" filters **\$2200**



**UV + FILTER SERVICING:**

- Service dual 10" filters **\$150**
- Service triple 10" filters **\$230**
- UV bulb replacement **\$180**



**RAINMAN**  
CLEAN AND SAFE RAINWATER  
**021-832-765**  
[www.rainman.co.nz](http://www.rainman.co.nz)

✓ Friendly advice ✓ Reliable service ✓ Fixed price ✓ Includes installation ✓ GST included ✓ No surprises



# election special • election special • election special

James Davis and Danny Topia didn't manage to send copy in time for the September issue with the other candidates, so have supplied them now. Remember voting closes Midday Saturday 11 October (allow time for posting it back).

## James Davis



My name is Jim Davis and I am seeking re-election to the Coromandel-Colville Community Board.

I was born and educated in Coromandel. At age 16 I enlisted in the NZ Army as a boy entrant – a Regular Force Cadet. At age 18 I graduated

into the Regular Force Army as a Private in an Infantry Battalion.

During the next 30 years I enjoyed many great postings with promotion such as:

- Instructor appointments in Waikouaiti and Burnham
- Recruiting Warrant Officer for Otago and Southland, and
- Public Relations Officer, Defence, South Island.

I served overseas in three countries: Malaya, Vietnam and the Sahara Desert.

I retired after 33 years and returned to Coromandel.

My first foray into politics and the Community Board was a big learning experience. I had no computer knowledge, had never owned one, and everything from the Council was by computer. Luckily, I had wonderful people to assist me and I picked up the basics.

The knowledge that I have gathered during my first three years will be hugely beneficial during the next term. I have far more to give this time around.

So, please, vote for me, thank you.



## Danny Topia

I take this opportunity to thank Debbie and the Coromandel Town Chronicle for the opportunity to include my nomination for the Community Board as a late inclusion, as an administration error by the NZ Electoral Commission, my contacts were not initially published.

I have been a property owner in Little Bay for 45+ yrs, a permanent resident for the last 12 yrs and I am the Chairman of Little Bay Ratepayers' Association, a role I have been in for the last 8 yrs. I am a person who

cares about our

It is my intention to enhance and co-ordinate and advocate for the

My work history includes a Licenced Aircraft Engineer, Manager with North Island K

My elected roles include Chairman Waikouaiti Directors Auckland Association.

My employment includes communication and

I am promoting operational, so

requirements are included in Council Long Term Plans, increasing engagement with local ratepayers' associations and community organisations, ensuring our community's awareness of the role of their Community Board and promoting how the Board can support, advise and help. I will be recommending that Community Board meetings should be held at various local locations. Increased engagement will result in increasing the community trust of your elected Community Board.

I want to be there as a voice of the community, monitor your requests, build what we need and manage what we already have at a price we can afford.

Contact [dannytopia@gmail.com](mailto:dannytopia@gmail.com)

## AFTER PRINT ADDITION

Thames-Coromandel District Council election candidate Danny Topia has sadly passed away.

Topia was a running for a seat on the Coromandel-Colville Community Board as part of the local election.

Any votes made for Danny Topia will not be counted.

## Five Friends on campaign trail

Well, really, it's just the three of us, plus Alexei's daughter who delivered flyers with great enthusiasm and energy and our mascot Piko, the super dog.

We are three friends who decided to stand for Community Board in the upcoming elections because we feel it's time to give something back to the wonderful community we live in, to contribute to its progress and wellbeing and drive for change across our ward.

We are Alexei, James and Susanna standing as candidates and definite hopefuls for being elected, with the commitment to focus our energy and determination towards doing good things for our communities.

As part of our campaign for the upcoming election the five of us went on a

road trip up North to visit the rural areas of Coromandel and Colville ward. We wanted to connect directly with folk up there to find out what people are looking for from the Board, and hear their concerns and needs. We caught up with lots of interesting people, had many deep, long conversations, cups of tea with old and new friends, and met a lot of welcoming kindness along the way. We put our posters up, delivered flyers to every letter box, and after what felt like a very long day returned back to Coromandel Town, with full heads and hearts and deeply exhausted. A splendid success we all decided.

It was a fun packed road trip, even the weather was kind to us, it rained when we left and it rained after the last flyer was delivered, but in between we had beautiful sunshine.

There is so much to learn and so much to say. We are blessed to live in this amazing part of the world, which we feel is super precious and deserves to be looked after carefully.

Communities in our ward have seen recent hardship with business closures, increasing crime and cut off highways. Many people are struggling to understand and meet the ever-increasing rates demands. Overwhelming regulations on businesses and home owners are a contributing factor to an economic slowdown in the area.

We see great importance in hearing what community voices bring to the Community Board and initiate change from grassroots level up, by advocating to the council on their behalf.

Vote for fresh energy and enthusiasm, vote for us!

**Himalaya shop : Colville**

Hi Everyone,

Spring is here, and we have received our shipment of goods for this season. Over the next few weeks we will be unpacking and getting the shop ready for Labour weekend. We will be open sometimes before that, but not on fixed days. If you are coming up to Colville best to phone first, to see if we are open on that day.

Phone/ whatsapp: Anette 021 138 7838, Rob 021 155 8559  
SHOP: 07 8667 224

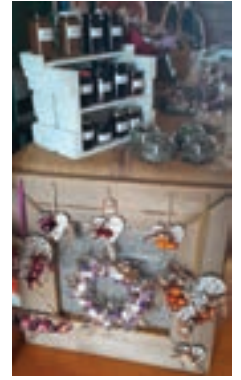
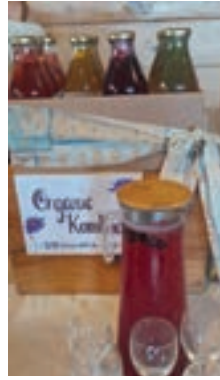


## Coromandel Growers & Artisans Market

**Stormy start to market season**  
The Coromandel "Growers &

Artisans Market" summer season has started in Coromandel Town. After a successful first-ever winter market, the group has decided to continue trading at the Anglican Hall and grounds over summer. Having indoor and outdoor space is of great advantage to our market and will weather-proof us for any rainy Saturdays during summer. Having use of both the hall and grounds will offer the opportunity to expand the market and welcome new stallholders.

We like that the market is strategically well-placed, following the example of the successful Coroglen Market, who



also enjoy the advantage of being on the busy State Highway 25. In addition, we are within easy walking distance from the town centre, with toilet facilities and ample parking onsite.

We offer a wide variety of produce, plants, honey, candles, fresh and dried flowers, bread, cakes, chocolates, hand crafts, health care products, gifts and souvenirs, as well as food and beverages. It is a fun weekly community event where locals meet and stock up as much as a unique destination for visitors to our town.

As in previous years our ethos remains that we offer all things homegrown and handcrafted, with some upcycled items, herbal remedies and delicious foods while showcasing some of the wonderful local talent.

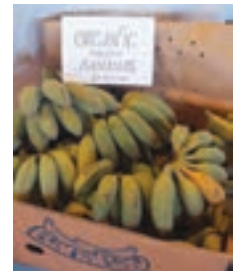
The first summer market took place on 13 September at our new Tiki Rd Church Hall

address, enduring extreme weather conditions, that saw most stallholders opt for the cosy indoor space, while a few braved the 39km per hour winds to set up outside.

The Coromandel "Growers and Artisans Market" welcomes new members who wish to join us, please contact Susanna at 0211 596 487 or [susanna.borgstede@gmail.com](mailto:susanna.borgstede@gmail.com) to book in..

We look forward to another fun, colourful and lively summer market ahead. See you there!

Saturday mornings, Church Hall, 170 Tiki Road, Coromandel Town



## FROM PADDOCKS TO PAVEMENTS, ACO WAIKATO DELIVERS RELIABLE RESULTS

**Your local specialists in civil works and surfacing across the Waikato region and servicing the Coromandel for the last 20 years.**

**Whether you need earthworks, asphalt sealing, or drainage solutions, our skilled team handles every project with precision and care.**

With over two decades of experience and a strong commitment to quality, ACO Waikato is your trusted partner for projects big and small.

Proudly based in Waikato and 100% locally owned.



Our core services include:

- Site preparation and earthworks
  - Civil drainage and infrastructure
- Expert sealing and a paving
- Retaining walls and kerbing
  - Road and driveway construction and repairs
- Farm races and rural accessways
  - Concrete works

**Get in touch today for a no-obligation quote – we're ready to help you get the job done, right and on time. Email [acowaikato@xtra.co.nz](mailto:acowaikato@xtra.co.nz) or call Dave on 0274785261.**



## Coromandel Town Information Centre

By Bronnie Kennedy



Our small but “perfectly formed” Information Centre is often the first port of call for visitors to our stunning corner of New Zealand. They receive a cheery greeting, welcoming smile and our willingness to take the time needed to help them make decisions about how to best spend their time.

“Have you seen our 1200 year old kauri tree at Long Bay? It’s like coming across a live dinosaur.”

“Make sure you wander our main street and enjoy our cafes, restaurants, galleries, and variety of shops and services.”

“Enjoy other walks to pa sites and lookouts. Check out Hauraki House for current exhibitions and theatre performances.”

“Take a fishing trip, play golf, a cycle adventure, visit our museums or the unique railway at Driving Creek.”

We have so much to offer, and a personal touch and recommendation makes all the difference. I began volunteering here at the information centre around eight years ago after arriving from the UK to take on an accommodation business at Papa Aroha. Volunteering here was a great way to learn more about the area myself and meet fellow business operators.

Volunteers are the lifeblood of so many of our services and organisations. Conservation, education, social welfare, community projects would all come to a standstill without the input of people donating their time. Our retired population in particular are an invaluable resource in this area. With years of varied experience, knowledge, wisdom and most importantly, time.

But volunteering isn’t all about giving. Rich rewards can be had by spending a few hours of your week with a local cause. Interaction with likeminded folk, exercise of the mind and body, learning new skills and having the satisfaction of having contributed to your community. I would encourage you to be on the lookout for a volunteering opportunity that suits you right here in our lovely area. You will be well rewarded.

## Coromandel Embroiderers' Guild

By Heather Arthur



We are readying ourselves for the Coromandel Guild annual exhibition to be held on **6-16 November**. There are a few unfinished items getting the final touches now as there is only a month to go before we need to hand them in. The year seems to have flown by.

The Northern North Island Guild’s exhibition in Orewa is being held in September and

15 of our members entered in the display and competition. Heather Constantine was judged 2nd place in the Dorothy Clarke Traditional Award, a very commendable achievement. Congratulations Heather and very well deserved for your beautiful work.

Very popular on Facebook and on our show n tell table this month were two of our members gorgeous penguins (made into doorstops) – one shown above, and two more from the knots, tufts, twists and twirls class held at retreat, plus a cushion, a bread bag and two knitted shawls.

Our latest and very interesting class was with Marilyn Jessen taking us for a landscaping class. Getting the right shade of blue material for the sea or sky, or green for the hills was just not as easy as one may have thought but Marilyn’s keen eye kept us on track. So getting the background sorted we now have lots of stitching to do to make the picture real.

With just 1 more class to go this year, we have had a very successful year with wonderful results making the world more beautiful 1 stitch at a time.

We meet on the 1st Wednesday of the month at the Coromandel St John rooms at 10am. For more information contact Helen at coromandelembroidery1@gmail.com.



[WWW.PARRBUILDERS.CO.NZ](http://WWW.PARRBUILDERS.CO.NZ)



**YOUR LOCALLY OWNED AND OPERATED BUILDING COMPANY**

*Servicing the Northern Coromandel and surrounding areas*

**Specializing in high-end new builds & renovations**

With expert craftsmanship, attention to detail and a trusted team, we bring your vision to life.

### ABOUT US

Our commitment to customer satisfaction sets us apart. From concept to completion, we prioritize safety, quality, and strong working relationships every step of the way.

### Solutions

- Luxury New Builds
- Premium Renovations & Extensions
- Decking and outdoor living spaces
- Insurance work



**Let's Build Together!**

Contact us today via our website  
[www.parrbuilders.co.nz](http://www.parrbuilders.co.nz)  
Call us on 0277888043

Brett Parr is a licensed building practitioner and is also a member of the NZ certified builders association

Offset your energy costs & enjoy backup support with a battery storage solar energy system. Call the specialists now

**SOLAR ENERGY**  
[www.goodenergy.co.nz](http://www.goodenergy.co.nz)

**GOOD ENERGY**  
SOLAR ENERGY SOLUTIONS

Phone 021 606835  
Email: [info@goodenergy.co.nz](mailto:info@goodenergy.co.nz)



## Colville Junction

Spring is officially here and we have three exciting events coming up in October! **Colville Festival returns this Labour Weekend!**

This year's Colville Festival promises a day full of community spirit, creativity, and fun.

Taking place on Labour Weekend **Saturday 25 October**, the festival will fill the tennis courts from 10am to 4pm with a vibrant market featuring local artists, crafts-people, community groups, and of course, delicious food. You'll even find the festival's fundraising stall selling second-hand treasures on commission – so if you're looking to declutter and make some extra cash, get in touch to help sell your pre-loved items.



Mundi



The Mana



Throughout the market, enjoy spontaneous live music performances by talented locals. Don't miss the free circus workshops run by Black Sheep Circus at 10am and 1pm, where kids and adults can have a go at juggling, hula hoops, plate spinning, and other circus skills in a fun, welcoming environment.

As day turns to night, the festival continues from 6pm with a ticketed music night on the Colville Tennis Courts. Get ready to dance as Taranaki's high-energy 7-piece indie band The Mara and Christchurch world music trio Mundi take the stage. Locals DJ Tiny Diva and DJ Kiamaia, will keep the beats flowing late into the night.

Gig tickets are \$35 at [www.trybooking.com/nz/ZPL](http://www.trybooking.com/nz/ZPL).

The event will go ahead come rain or shine, with all activities moving indoors to the Colville Hall if the weather turns.

We still have a few spots available for \$15 market stall sites and are looking for someone to sell food during the gig. Contact: Rongomai Bailey on 020 4020 7041 or [festival@colvillejunction.co.nz](mailto:festival@colvillejunction.co.nz).

### Film Night in Colville Hall

We are very fortunate to have Notes from a Fish screening here in Colville! Direct from its sold-out world premiere in August this year at the Whānau Mārama New Zealand International Film Festival 2025 in Tāmaki Makaurau/Auckland.

**Friday 10 October** at 7pm, Notes From a Fish (82min) – followed by Q&A with the Director, Tom Levesque, and Producer Eva Trebilco.

This film was selected by Spin-Off as one of 10 must-see films in the festival. It was so successful at the film festival that they had to add additional screenings in both Tāmaki Makaurau and Pōneke/Wellington.

Part crime caper, part screwball comedy, Notes from a Fish delights in making its hapless characters run the gauntlet of truly unfortunate events. The film follows a would-be novelist's creative drought which turns chaotic when his muse - a pet fish - disappears, dragging him through the unhinged underbelly of suburban Auckland alongside an

eccentric Fisheries officer.

Notes From a Fish is the sophomore feature from Tom Levesque (Shut Eye, NZIFF 2022, MIFF 2023) and producer Eva Trebilco (Shut Eye). Levesque wrote, co-directed, shot, and edited the film himself, proving that constraint can be a powerful creative force.

See more info about the film here: [www.nziff.co.nz/2025/tamaki-makaurau-auckland/notes-from-a-fish/](http://www.nziff.co.nz/2025/tamaki-makaurau-auckland/notes-from-a-fish/)

If you would like to make a night of it, Colville Pre-School will be hosting a yummy curry night at the Colville Cafe as a Pre-School fundraiser 4.30-6.30pm.

There will be snacks available at the film screening too – including popcorn and icecream – so bring cash.

All proceeds from the film will go towards the Colville Festival.

Tickets are on sale at Richardsons Real Estate, Coromandel or the Colville Store.

### Potting Party #2 for 2025

**Saturday 11 October** 10am-2pm at Colville Harbour Care Nursery, Wharf Rd, Colville.

Help us plant native seedlings in this favourite, family friendly, feel good event! This event is to fill bags for planting precious native plants. Lunch provided.

Make a positive difference, meet great people, eat delicious food, enjoy great tunes by local DJ's.

For more information on these events and anything else Colville Junction related – go to our website: [www.colvillejunction.co.nz](http://www.colvillejunction.co.nz)

## Four Cows, at Sea

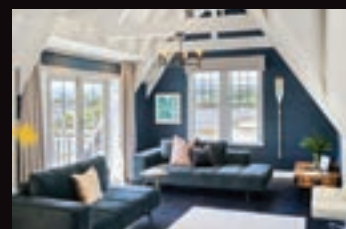
By Mo Irvine

The tide so low, it would take a half-hour to walk to the edge of the water, where the flash of the waves and the cry of the sea birds coalesce and coruscate into a distant foaming horizon.

Just below that glistening white line four black cows march solemnly, left to right, across the bay.

(P.S. this actually happened while I was sitting on the foreshore one day.)

POETRY  
SPOT



# Beautiful wooden joinery

## INCLUDING:

- NEW ARCHITECTURAL
- TRADITIONAL VILLA AND BUNGALOW STYLES
- RETRO-FITTING EXISTING JOINERY WITH DOUBLE GLAZING

[email info@woodenjoinery.co.nz](mailto:info@woodenjoinery.co.nz)



## Coromandel Garden Circle

By Sheana Goudie

This month it was garden ramble time and in spite of the weather forecast telling us it was going to be wet and windy, the day was surprisingly fine. We were able to visit another two amazing gardens worthy of any garden tour, so thank you Janine A and Medrina for letting us visit. You just never know what is tucked away down driveways. Both gardens were in very peaceful settings and it was obvious that much love and hard work had gone into both of them.

We visited Janine's first. The shaded gardens were very lush and tropical looking with a huge variety of plantings and garden sculptures, along little pathways. Pathways also led to an enclosed vegetable garden and the many fruit trees planted on the well-manicured lawns.

A walk down one garden path and through a little garden gate took us passed the chickens and into Medrina's garden next door, where her delightful little dog greeted us with wagging tail. Her garden was equally wonderful with a variety of different plantings. The tulips were lovely and there were lots of bird feeders and sugar water out for our local bird visitors. After Jeni thanked our hosts, we reluctantly returned to the club for the rest of the meeting.

During Forum time, Pauline showed us her beans from the Inga Bean Tree otherwise known as the Vanilla Icecream Tree grown here in Coromandel. Her tree produced these beans for the first time this year. The tree is native to South America and can grow up to 6 metres tall. It is widely grown in South America for shade, food, timber, medicine, and production of the alcoholic beverage Cachiri. And the bean pods are sold as a delicacy. The white pulp that surrounds the seeds inside the bean pod tastes just like vanilla icecream – hence the

name and can be eaten as a dessert or roasted and eaten as a vegetable.

Another discussion during forum, was how much pests are devastating local gardens this year – maybe it's due to the wetter weather we seem to be having. Slugs and snails are the usual problems but



### Peninsula Pest Services



Contact us for control and prevention of insects, rodents and other pests!

Phone Simon English on **027 555 1271**

Email: [peninsulapest.nz@gmail.com](mailto:peninsulapest.nz@gmail.com)

[www.peninsulapest.co.nz](http://www.peninsulapest.co.nz)



members have also had rabbits and birds such as ducks, quail, pukekos and even peacocks visiting for the tasty new spring growth!

The results of the competitions for September, were as follows:

Single Bloom: 1st Sheana G, 2nd Pauline M, 3rd Sue O

Multi Bloom: 1st Tracy K, 2nd = Robyn D / Annette S / Pauline M, 3rd = Kelera K / Elaine A

Mini Bloom: 1st Annette S, 2nd Sue O, 3rd Sheana G

Three of a kind: 1st = Thelma N / Linda W, 2nd Annette S, 3rd Judy R

Arrangement: Fabulous Flax, 1st Elaine A, 2nd Jeni M, 3rd = Dianne D / Tracy K

Special: Colour It Yellow – 1st Annette S, 2nd = Sheana G / Linda W, 3rd Robyn D

Next meeting: **Wednesday 8 October**

Venue: Garden Ramble at Linda W's and Glenise R's and the usual meeting will also be hosted by Glenise

Start Time: 1pm

Competitions: Arrangement: Include a Vegetable. Special: Fragrant Flowers

We love to welcome new members to our monthly meetings which are held on the second Wednesday of each month at The Coromandel Combined Clubrooms at 1pm. Ph Jeni 021 0277 5341



### Correction

There was an error in the Coromandel Garden Circle in the September issue of the Chronicle regarding details on the guest speaker Jan Steele – she would like it noted that she used to be a nurse at the Burns Unit at Middlemore – not a Head Nurse there.

**NANNY NEAR U**  
Child Care  
Registered Teacher  
Dog Sitter  
**021 776 039**  
Whangapoua, Matarangi, Tairua  
Kūāotunu, Whitianga, Coroglen,  
Whenuakite, Hahei, Hot Water Beach

### WANT

NATIVE NURSERY & EDIBLES  
WAITAIA RD, KUAOTUNU

A wide range of beautiful natives,  
palms and fruit trees.

Potting mix, compost, mulch, chook manure.

Open Thursday- Sunday 8.30-4.30 or by phone appointment  
Please phone Colin Hill 07 869 5910 or Cam on 021 620 798



# /Richardsons

Real Estate Ltd MREINZ / Coromandel  
Licensed REAA2008



Kim  
021 533 174  
Licensed Branch  
Manager



Melissa  
027 249 8287  
Licensed  
Salesperson



Laurie-Ann  
027 927 6368  
Licensed Property  
Manager



Lynne  
Office  
Administrator

151 Kapanga Road, Coromandel

Phone: 07 866 8900 ☺

[www.richardsons.co.nz](http://www.richardsons.co.nz)

[coromandel@richardsons.co.nz](mailto:coromandel@richardsons.co.nz)



Surrounded by trees on Wyuna Bay Peninsula. Elevated 2,372m2 section with harbour views and within close proximity of Wyuna Bay & Long Bay beaches/boat ramps. Call your architect/builder today! **\$435,000**



Just perfect for your young family. The section offers a private rear yard for the children/pets, while the renovated home features a new kitchen, colour scheme, floor coverings and decking. Come and explore. **\$735,000**



You'll be hooked!!! Looking for the ideal fishing/recreational base? Flat, fenced section within an easy walk of town. 2brm home, open-plan living, and good decking. Double garage, BBQ area and concrete drive. **\$675,000**



Bring the horses/cattle/sheep! 7.4Ha in pasture, small studio, 147m2 barn, sea views. **\$1.25M**



Immaculate presentation in 'top town', 2brms, great deck, garage, ¼ acre section. **\$650,000**



Private sanctuary of 7,069m2. Stylish home, sep self-contained unit. MUST BE SOLD. **\$1.2M ono**



'Elizabeth Park' living for over 55's. North facing 2brm home, single garage, gardens. **\$475,000**



AWESOME 2 acre lifestyle property. Huge 3brm home, garaging/sheds, walk to town. **\$1.595M**



2,897m2 section on north side of town. Great 'Podlife' cabin for weekend retreats. **\$495,000**



Home or holiday? 3brms, 2 living areas, decking, double garage, 796m2 section. **O/O \$820,000**



The BIG PICTURE. 176Ha former forestry block, stunning native bush. Sea views. **\$1.395M** + GST (if any)



Lock up and leave! Great holiday base with room for car & boat. 2brms, deck, carport. **\$560,000**



## Winiata Tapsell

By Buddy Mikaere from Manaia

On the wall of the Coromandel Hotel, The Top Pub, in the public bar there is an interesting photo on the wall of the 1921 Maori All Blacks. They played the Springboks in Napier on the 'Boks first tour of this country. Third from the left in the top row is this man, Winiata Tapsell, from Maketu in the Bay of Plenty who played No. 8.



Winiata Tapsell, on the wall of The Top Pub

Winiata, along with other members of his family – all descendants of the early Danish trader Hans Tapsell – served in the Maori Pioneer Battalion during WW1.

Towards the end of the war the New Zealand Division found themselves outside the town of Le Quesnoy in Northern France near the Belgium border. Le Quesnoy is a medieval town complete with towering walls and a moat. The NZ Division was faced with the problem of liberating the town without killing the civilian population.

The story is that Winiata found a long board and got across the moat, one of the officers threw his rifle across and he found a hole in the wall, got into the town and shot a few Germans until he ran out of ammunition. Then, and this is what gives his story the ring of truth for me, escaped back the way he had come but grabbing a few chickens for the boys as he left.

Meanwhile, on the other side of the town, some soldiers found a low part of the wall and with some ladders got up into the town shooting some more Germans who, realising the game was up, surrendered wholesale and the town was liberated. The people flocked into the streets to welcome the victorious Kiwis, pinning flowers onto their uniforms and celebrating their freedom. The ladder climbing soldiers gained all the glory and the medals.

And Winiata? He was found guilty of being absent from his post and given field punishment.

Seven days later, on 11 November 1918, the Germans surrendered, and the war was over.

But there was one more humiliation to come for Winiata and the Maori Pioneers. They were formed up and set off to march to Germany where they were to be garrison troops. Across France and Belgium, at every town, they were greeted with spontaneous cheering and hosted with great kindness by all the people they met. But halfway there they were halted and turned around. The British High Command had decided you could not have native troops in charge of white people.

So, the Pioneers returned to New Zealand and were demobbed. Winiata became a feared rugby player, and it is said that the Springboks made a special request that the Maori Pioneer rugby team play against them. However, they played a national Maori selection instead which is what happened at Napier in 1921. The Maori team lost 8-9. But that game is remembered more for the news report sent back to South Africa by a journalist travelling with the team and who wrote in part:

Bad enough having to play a team officially designated New Zealand natives, but the spectacle of thousands of Europeans frantically cheering on a band of coloured men to defeat members of their own race was too much for the Springboks, who were frankly disgusted.

To their credit, Springbok management strongly denied the "disgusted" element.

We don't know what Winiata Tapsell thought of that game, but I can imagine he was not amused.

If you travel to France I encourage you to visit the New Zealand Liberation Museum at Le Quesnoy. I am confident that like all Kiwi visitors to Le Quesnoy, you will receive a very warm and very sincere welcome.

The giant figure (above) is in the Le Quesnoy museum... a weary Kiwi soldier with flowers in his lapel after the liberation of the town (produced by Weta Studios).



The giant figure of Winiata Tapsell in the Le Quesnoy museum, France



[WWW.JAMESDRAINAGE.CO.NZ](http://WWW.JAMESDRAINAGE.CO.NZ)

Excavators | Tip Trucks | Bobcats  
Auger & Chain digger hire  
Skip Bins | STMS Services  
Septic Tank Services | Portaloo Hire

**1020 Tiki Road, Coromandel**  
**p. (07) 866 8308**

**e. [jamesdrainage@xtra.co.nz](mailto:jamesdrainage@xtra.co.nz)**

**Commercial sections  
and units available**

For details please visit  
[www.coromandelbusinesspark.co.nz](http://www.coromandelbusinesspark.co.nz)

**RAD**

REVELL  
ARCHITECTURAL  
DESIGN

- New home design and draughting
- Alterations and additions
- Resource and Building Consent applications
- 3D rendering
- Landscape design

**Scott Revell**

NZDipArchTech

027 861 6592

[scott@revelldesign.nz](mailto:scott@revelldesign.nz)

[www.revelldesign.nz](http://www.revelldesign.nz)







People giving thanks to God in song. The wood for the cross was donated by a church member and is swamp kauri, belived to have been growing about 2000 years ago, about the time that Jesus walked on earth



Over 200 people, waited with happy anticipation for Mayor Len Salt to open the new Coromandel Elim Church building

## Coromandel Elim Church

By Debbie Morgan

I spoke to Michelle Dellabarca of Coromandel Elim Church after the opening of the new Elim Church, Coromandel Town.

Mayor Len Salt, who opened the church on Saturday 13 September, gave a good speech to a large crowd of invited guests. The church was full at the opening without any publicity.

Coromandel Elim Church started about 40 years ago and had been operating from a church in Rings Road. They bought a large section over 20 years in the Koromiko subdivision. Nothing happened with the land for a long time, then 3-4 years ago they sold the Rings Road church building and leased it back from the new owners – freeing up money for the new church to be built. Funds were also raised from the church community and generosity of strangers.

What an amazing accomplishment!

The new church is a really asset to the Coromandel Town community. At the moment, as well as church services, the space is used by Music and Dance for preschoolers, and a church youth group. The building has two levels, with offices, kitchen, fellowship area and auditorium which holds up to 200 people on the ground floor. Two extra rooms are upstairs.



Pastor Steve Garland welcoming visitors into the new church

Elim Church Coromandel are looking forward to the future and what this space can offer.

Service every Sunday 10am – everyone is welcome.

Coromandel Elim Church, 3 Karamu Lane, Coromandel Town

## New ownership at Guthrie Bowron Whitianga

May 2025 saw a change in ownership of Guthrie Bowron Whitianga. Now owned and operated by Pete and Dale Banks, who bring with them a wealth of business experience and knowledge, having built, owned, and operated numerous businesses in the Waikato area. Pete and Dale are passionate about offering exceptional customer service.



Pete and Dale Banks

Their involvement and support of local organisations and events have already begun, and this will continue to grow.

Employing 14 full time staff, three installation sub-contractors and support sub-contractors, their expert and professional team cover all aspects of interior decorating. They can guide you through what could be an overwhelming process – from an initial consult through to a quality finished result.

Specialists in paint and wallpaper, they can offer instore colour consultations and can mix up paint test pots on the spot.


Their award-winning flooring consultants handle tiles, carpet, vinyl, laminates and timber, offering an extensive range of samples.

When it comes to window coverings, their expert curtain consultants are well equipped to assist with your curtain, blind and shutter needs.

Guthrie Bowron Whitianga can guide, advise and inspire you on interior finishes, design styles and exterior colour schemes. We can also liaise and work alongside your trades people on your behalf.

The showroom is equipped to inspire, with a huge range of product, including home décor. We provide free in-home consultations, measures and quotes from as far south as Pauanui and as far north as Port Jackson.

Come instore and meet with their friendly team and talk to them about your next project.



# GB

**Guthrie Bowron**  
Whitianga

Inspiration starts here.

<b>COLOURS CURTAINS TILES CARPET</b>	<b>FREE MEASURE &amp; QUOTE</b>	<b>INSPIRATION AND ADVICE</b>	<b>TOP SERVICE &amp; VALUE FOR MONEY</b>
--	---	---------------------------------------	--

*Pete and Dale* have put together a qualified team experienced to assist you with all of your interior decor needs. We are skilled at colour scheming and we love to help with the final touches that complete a room. Come and talk with our friendly team of specialists or phone for an appointment and we will come to you.

**Guthrie Bowron Whitianga**

2/9 Joan Gaskell Drive, Whitianga

**07 866 0035** sales@gbwhitianga.co.nz

Trust us with  
your decorating  
project

<b>FLOORING</b>	<b>WALLPAPER</b>	<b>PAINT</b>
<b>CURTAINS</b>	<b>BLINDS</b>	<b>ADVICE</b>

## Museum

By Maureen Kimber

The Museum committee are almost ready for our new 2025/26 season. Our Community Open Day is on Saturday 27 September with a fun afternoon 2-4pm. Tea and cake, live music and a wonderful new display on the Coromandel Granite Quarry's contribution to so many NZ buildings and monuments, also New Zealand House in London England. Lindsay Garmson will be on board to answer any questions you may have on the iconic use of granite which is many and varied. The exhibition itself will be on display for a couple of months at the Museum and well worth a visit.

**Thursday 2 October** is the official opening day and we will be there on Thursdays and Fridays from 1-4 pm, Saturdays and Sundays from 10am-4pm until Christmas, when our new longer opening days will take over.

We recently held a volunteers morning tea and thanks to members, and non-members, who came along. Without volunteers it would be impossible to keep up the standard we believe we have set to ensure an interesting, informative local Museum. Plenty of jobs are always available and we welcome anyone who has an hour or two to spare during the week.

Our retail section proved to be very popular in its inaugural year, providing souvenirs and gifts to local and overseas visitors, and we have extended the range of merchandise to suit most purchasers – pop in and have a look sometime.

You may remember the teaser of “Mystery at the Museum” in last month's Chronicle. Well, all will be resolved on **Saturday 4 October** at 11am in the Hauraki House theatre. Read all about it in Angee's report on this page.

On a final note, we are thrilled that the ferry will be in use once again, for a trial period. It is obviously up to our community to ensure that passengers use all our facilities in town – if we don't use it, we lose it!

The Museum and the Stamper Battery will do our very best to attract visitors, so please add these to our “must see” attractions.

Enjoy the coming summer season and look forward to meeting new and old customers, with changing local displays throughout to interest everyone.



## Mystery at the Museum

By Angee McWatt

On **Saturday 4 October**, at 11am at Hauraki House there will be the unveiling of a beautiful piece of artwork by the late Bev Campbell. It was created in 1973 as part of the celebrations to commemorate the centenary of Coromandel Schools.

It captures a schoolyard scene outside Hauraki House from the late 1800s, with children playing in the park, teachers and a Head Master. This is an important part of our local history and heritage and I am so happy that it will again be seen and enjoyed by the community.

Here is a bit of the history of Hauraki House and of Schools in Coromandel taken from the information at Hauraki House Reserve.

1873-75: Kapanga School (or Lower Township School) moved to the larger Coromandel hall but this was burnt down in 1875 so another temporary premises was rented

1876: Hauraki House Reserve site was bought for 90 pounds.

1877- 97: The first building was constructed in 1877 at a cost of 290 pounds. Over the next 20 years it was added to and altered almost continuously as the school role expanded to a high school.

1900: A high school department was established.

1916: Driving Creek School closed and Kapanga School became known as Coromandel Public School.

1956: The high school moved to a new building, (which is where the Coromandel Area School is now).

1960: Staff rooms added (now the kitchen).

1977: School closes with a new primary school opening in 1978.

Some readers may wonder why I am so passionate about preserving the history and memory of my Great Aunt Bev's artwork and Hauraki House. Well, I myself work in education. It first started 17 years ago when I worked at the Rudolf Steiner Kindergarten as a student teacher until it closed. I also worked at the Coromandel Community Preschool and as an Education Support Worker for the Ministry of Education. I also ran a playgroup for families new to the community. I am currently working as a teacher aide at the Coromandel Area School for the last three years, and I am looking forward to the future to continue my education to become a teacher. As I have no children of my own, I want my legacy to be for helping nurture and care for the children in my community.

It will be wonderful to meet friends of Auntie Bev at the unveiling of the mural, as many members of Bev and Don's family will be there to celebrate the occasion.

I want to say a big thank you to Karen Rossi McMillan, the Coromandel Museum volunteer staff, especially John Walker and Coromandel Town Theatre.

“It takes a village to raise a child.”

*Editors note: Angee will supply a photo of Bev's artwork in the Chronicle after the unveiling has taken place on 4 October – so family and friends see it first*



My Great Auntie Bev Campbell and my Grandmother Audrey Coles (both nee Wenzlick)

**TWENTYMANS**  
FUNERAL DIRECTORS  
Since 1867

*Proudly serving our communities since 1867*

07 868 6003  
funerals@twentymans.co.nz  
www.twentymans.co.nz

**CAPE CIVIL**  
EARTHWORKS & CONSTRUCTION

Retaining walls & Landscape  
Water supply & Tank installs  
Gabion walls  
Culvert installs

Housepads, Driveways and access  
Foundations & Subdivision  
Metal Deliveries

**CALL NOW FOR A FREE NO OBLIGATION QUOTE**  
**LEWIS 027 250 5076**



# WINTER PIZZA

 **\$15** 

GET YOUR PIZZA LOYALTY CARD  
BUY 10 GET ONE FREE

---

**MONDAY TO FRIDAY  
DINE IN OR TAKEAWAY**

---

CONDITIONS APPLY

**PORK HOCK**  
MASH & CARROTS **\$25**

**OR CRUMBED  
PORK CHOP**  
MASH, APPLE SAUCE, **\$25**  
GRAVY, SAUERKRAUT

---

**DINE IN OR TAKEAWAY - 7 DAYS**

---

CONDITIONS APPLY

**MUSSELS &  
CHIPS \$20**

6 BATTERED MUSSELS,  
TARTARE & LEMON

**BANGERS &  
MASH \$20**

LAMB SAUSAGES,  
ONION, GRAVY

---

**DINE IN OR TAKEAWAY - 7 DAYS**

---

CONDITIONS APPLY

**PASTA**

RIGATONI WITH 6 FRESH  
MUSSELS, CHILLI, GARLIC,  
THYME, TOMATO, PARMESAN  
**\$25**

RIGATONI WITH CHICKEN,  
MUSHROOMS, CREAM AND  
PARMESAN  
**\$25**

---

**DINE IN OR TAKEAWAY - 7 DAYS**

---

CONDITIONS APPLY

**Grey Power**

By Carol Carson

**Zone meeting**

Brian and Gay Holmes attended the August Zone meeting held in Matamata.

Rates and cost of living for the elderly was high on the agenda and it was agreed that our concerns should be raised at "Meet the Candidates" meetings scheduled for later in the month. Hon. Tracey Martin, CEO of Age Care NZ attended and her enthusiastic and engaging address covered rates and Councils, elder abuse, cost of home care, residential and hospital care. This is what Government needs to address and we should make our voices heard.

**Refresher course for elderly drivers**

A free classroom based driving refresher course is scheduled for **Wednesday 4 February 2026** to be held at Combined Clubrooms, Woollams Ave 10am-2pm. Had your licence for years and need to refresh your Road Code knowledge? Feeling unsettled as you have a medical coming up to renew your licence? Curious about what all these changes to road layout and signs mean? This was very popular last year and enrolments are essential. Email: "coordinator@acha.org.nz" or phone 07 868 9790. Posters will be put on noticeboards around town.

**Coffee morning held in August**

Theme of the coffee morning was getting to know you! Who's travelled the furthest? Who's the most famous person you have met? Turns out we have amongst us many talented and far travelled members who have held positions in high places. We all enjoyed hearing the tales and contributing to them. Just a pity only approx. 20 of us turned up out of the 250 odd members.

**Monday Walking Group**

By Tracy Kendall

Now that spring is well and truly upon us, its time to dust off your walking boots, and get out there into the great outdoors! Why not come along to the Monday walking group, to join active walkers from all around the Coromandel for a great day in the fresh air?

Our Walking Group was started by Irene and Blen Dunn about 16 years ago. Continuing the leadership, along with Peter and Jill Rabarts, has given Peter and I much joy, as well as stretching our awareness of the tides, weather, walking safety, and topography of the Coromandel.

We meet in Woollams Ave car park, next to the Coromandel Area School at 9am to carpool. A weekly email is sent out specifying the walk details, the estimated grade of the walk, and what to bring along. We're usually back to the cars by 2pm or so, and home for a shower, and relax. For the remainder of the week, we have that virtuous feeling that we walked 10-12 kms on Monday!

Those of us that walk regularly have become firm friends with our fellow walkers, united by our common interest of staying active into our retirement years. There is a wide range of ages from 50's to almost 80's. Occasionally we bike instead of walk, and most of us were game enough to complete the Fletcher Bay to Colville E-bike ride, with the support of Hike n' Bike last year. We carry a snack and a drink, but also usually enjoy a coffee at a café at the conclusion of our walks, and we've discovered a few goodies on our travels!

Perhaps the greatest nugget of Coromandel gold that this group has taught me, is that just because you turn a certain age, it doesn't mean that you give up or cease to retain a level of activity. In fact, research tells us that one of the greatest indicators of future health, is the strength of your legs. So, search out your walking shoes, your backpack, and raincoat, and come along to try out walking with the Monday Walkers!

For further information contact: Tracy Kendall: 027 333 4722, email ptkendall@xtra.co.nz



Walk near Papa Aroha earlier this year, led by Lynne

PHOTO BY PETER KENDALL



Taking well-earned rest at the bridge earlier this year on Waiomu kauri walk

PHOTO BY PETER KENDALL



The fairest fare by far

**For a professional & friendly everyday taxi service & more!**

Ph: 027 376 4466  
Email: corotaxis3506@gmail.com  
www.corotaxi.co.nz

**Coromandel to Thames Connector Shuttle**

OCTOBER – MONDAY, WEDNESDAY &amp; FRIDAY

NOVEMBER – MONDAY TO FRIDAY

(after the road reopens).

**8am** – depart Coromandel**9.10am** – arrive Thames**11.15am** – depart Thames**NEW PRICES FROM 1 OCTOBER:**

\$20 one way or \$25 for the round trip.

Click &amp; collect \$14

**Bookings essential.**



## RSA

By Gary Pettett

We have just had the unveiling of Sir Keith Park's commemorative statue in Thames, so his WW2 history is well documented. You may be interested in his exploits previous to that period of his life.

### Keith Park

Sir Keith Rodney Park was a decorated First World War fighter pilot who carved out a prestigious career in the Royal Air Force (RAF). He played a pivotal role in the defence of London and south-east England during the Battle of Britain.

Born in Thames on 15 June 1892, Park was educated at King's College, Auckland and Otago Boys' High School, Dunedin. At the age of 19 he joined the Union Steam Ship Company as a cadet purser – earning the nickname “Skipper” among friends and family.

Early in the First World War Park enlisted in the New Zealand Expeditionary Force (NZEF); he sailed to Egypt in January 1915. He landed at Gallipoli on 25 April and served with a New Zealand howitzer battery until July, when he was promoted to second lieutenant and transferred to the Royal Field Artillery. Following his battery's evacuation to Egypt in January 1916, Park was transferred to the Western Front. Wounded in October 1916, he was sent to England to recuperate and, after being informed he was unfit for active army service, gained a transfer to the Royal Flying Corps (RFC) in December 1916.

Park was taught to fly at Netheravon on Salisbury Plains. After a three-month spell as an instructor he was sent back to France in July 1917. For the remainder of the war he flew two-seater Bristol Fighters with No. 48 Squadron, which he commanded from April 1918. According to Park's biographer, Vincent Orange, by the end of the war between them Park and

his various observers had “certainly destroyed eleven enemy aircraft and damaged at least thirteen others to a greater or lesser degree”. Park earned two Military Crosses and a Distinguished Flying Cross in the process.

During the interwar years Park held various command and staff postings in the United Kingdom. Promoted to Air Vice-Marshal in April 1940, Park was given command of No. 11 Group, responsible for the defence of London and south-east England. After the war he returned to Auckland until retirement and played a prominent part in local politics. He died in 1975 aged 82.



A statue of Sir Keith Park has been unveiled in his birthplace, Thames, on the 85th anniversary of the Battle of Britain.



## Coromandel Bowling Club

By Judy Campbell

On Thursday 4

September, we enjoyed our Opening Day for the 2025-2026 season with a few from the Mercury Bay Bowling Club joining us as well.

Bruce Gawith, a Life Member of our club, delivered the opening bowl of the season (see photo) in which we played four games and enjoyed a lovely shared lunch in between.

Unfortunately our first Sunday Social Roll up was cancelled due to the rain so our apologies to anyone new who had planned on coming down that day to “give it a go” and found the green closed and the place deserted!

I do endeavour to give everyone plenty of notice via our Facebook page or email though so check there beforehand, especially if we have had a bit of rain prior.

We had three Open Tournaments in September/early October which I will update you all on next month.

In October we will play for the Ecclestone Cup on **Thursday 9 October** and on **Wednesday 15 October**, we have an Open Optional Triples Tournament sponsored by our local and very supportive Coromandel Four Square.

The first of this season's Twilight Bowls starts up on **Tuesday 28 October** and runs for five weeks so be quick in getting your entry and entry fee of \$60 per team in order to secure your spot. Contact for Twilight Bowls is Judy Haycock on 022 519 5421.

Please feel free to come down to the club, even if just to watch some bowls being played or if you are thinking of joining up. We have various membership categories so there is bound to be something available to suit you.

Any queries can be sent to me at corobowlingclub@gmail.com



Bruce Gawith, a Life Member of our club, delivering the opening bowl

PHOTO COURTESY OF NZ DEFENCE FORCE

## PENINSULA ELECTRICAL SERVICES LTD

Commercial & Domestic Electrical Contractors



### RAVINDER & SUE RAJ

Registered Electrical Inspector

P.O. Box 109  
Coromandel

Telephone (07) 866 8166

Free Phone: 0800 4 Electrical (0800 435 328)

E-mail: ravinder@e3.net.nz

1750 S/H 25

Coromandel

Fax (07) 866 8162

Mobile (0274) 738 734



## SUMMER QUIZ EVENINGS

EVERY LAST FRIDAY IN THE MONTH

(September 26th, October 31st,  
November 28th and 19th December)

At The Club, Woollams Ave, Coromandel

Teams of 4 ( or less )

Quiz from 6.30pm to 8.30pm

Bar open from 6pm

Phone Maureen 02102541216

or

John 0211390189



## The Colville Community Cafe

The Colville Community Cafe sits alongside the Colville Store in Colville Village. These buildings and surrounding land have been owned by the Colville Co-operative Society since 1980 on behalf of the residents of Colville and beyond and are an important part of the vibrancy of village life.

The store is run by a company which employs local people and the Cafe has had many faces over the years managed by many different people. It is presently managed by the Co-op and is used to host community music and pizza nights, fundraising dinners, craft workshops, educational workshops, the likes of children's birthday parties and other social occasions. It is a welcoming, relaxed community space with indoor and outdoor facilities: a pizza oven and commercial kitchen available.

We would like to offer this opportunity for a Pop up Summer at the Colville Cafe – expressions of interest are being sought to lease the Cafe for seven weeks from **22 December until 9 February 2026**.

If you have a financially viable proposal and would like more information phone Steve Carson 021 711 489 or email [colvillecooperativesociety@gmail.com](mailto:colvillecooperativesociety@gmail.com)

# Purnell

LAWYERS

## BRENDA FLAY, SOLICITOR:

Travels to Coromandel on Tuesdays.

Please phone the Thames Office (868 8680) for appointments.

**PARTNERS:** Hayley Green and Brenda Flay

**THAMES OFFICE:** 611 Mackay Street, P.O. Box 31, Thames

**PHONE:** 868 8680 **EMAIL:** [info@purnell.nz](mailto:info@purnell.nz)

**COROMANDEL OFFICE:** 150 Pound Street

## OUR SERVICES

ESTATE PLANNING / PROPERTY / COMMERCIAL

[www.purnell.nz](http://www.purnell.nz)

THAMES

WHITIANGA

COROMANDEL

## Beaches

By Mo Irvine

I have walked many beaches  
and cried along them all  
been drunk on a few  
startled the sea birds  
watched them climb  
into black skies  
screaming displeasure

I have written poetry on beaches  
sad and happy tears have blurred my sight  
as I scribbled on scraps of damp paper  
sniffing into the back of my hand

I have felt small on beaches  
swallowed by the vastness of the sky  
teased by the infinity of vision  
where a different world  
hovers

just out of sight . . .

POETRY  
SPOT

## Hon Scott Simpson MP for Coromandel

I'm thrilled that a ferry service between Auckland and Coromandel Town will be resuming from October.

With summer quickly approaching, this news will be a welcome boost to our tourism sector, not to mention locals who have wanted greater connections to their families living in Auckland. I'm sure that being able to jump on a ferry at the Auckland CBD and get to the Coromandel Peninsula in a couple hours will be a huge drawcard for many domestic and international tourists.

Well done to everyone who has been involved in pushing for this outcome, especially the Coromandel-Colville Business Association who have been consistent in the advocacy for our region. This was a community-driven initiative and I can't wait to see the ferry in operation.

It was also encouraging to see the latest figures from the International Visitor Survey which showed that international tourism contributed \$12.1 billion to New Zealand's economy, up 4.3 per cent compared to last year. Our region welcomed its fair share of these tourists, with the Thames-Coromandel District accounting for 7 per cent of people's nightly itineraries.

There's still plenty of room for our tourism and hospitality sectors to grow and I have no doubt that they're excited to welcome more people to our region when the ferry service resumes.

In other news, NZTA is reviewing speed limits on some parts of SH25 and SH2 in Waihi and Karangahake. The areas under review include the townships of Kūāotunu and Wharekaho, between Thames and Tararu, the township of Waihi, and Karangahake towards Waikino.

There are just a few days remaining for locals to have their say on this review. Submissions are open until **3 October** and can be made online at NZTA's website.



## Scott Simpson MP for Coromandel

### Contact me anytime

0800 550 330 • [scottsimpson.co.nz](http://scottsimpson.co.nz)  
[mpcoromandel@parliament.govt.nz](mailto:mpcoromandel@parliament.govt.nz)  
@scottsimpsonmp



Authorised by Scott Simpson, Parliament Buildings, Wellington.





# Our Coromandel

News from Thames-Coromandel District Council



October 2025

## Date set for Boundary Creek Bridge

**SH25 will be closed at Boundary Creek Bridge, north of Te Mata, for seven days from 5am on Wednesday 29 October as NZTA contractors demolish the old deck and install the new one.**

They will use a prefabricated bridge deck and work extended hours to keep the closure to the shortest possible time. Access will be maintained for all businesses and properties along SH25 up to the bridge from the north and the south, but no through traffic will be possible during this time.

To get to locations north of the bridge, including the Waikawau boat ramp, use SH25A and the eastern section of SH25 via



Tairua and Whitianga. For those heading south from northern Coromandel, it will be the reverse.

Please avoid the 309 and Tapu-Coroglen Roads if you're towing or driving a heavy vehicle.

For more information, visit [nzta.govt.nz/sh25-sh25a-coromandel](https://nzta.govt.nz/sh25-sh25a-coromandel)

## NEWS IN BRIEF

### LOCAL WATERS DONE WELL

Last month our Council submitted its Water Services Delivery Plan to the Ministry of Internal Affairs for approval. The plan sets out how we'll deliver our water services through an internal water services delivery unit, while continuing to explore future options to join with other councils in a joint Water Services Organisation (WSO). Should we change to a multi-council WSO in the future, our plan can be updated and submitted again before 3 September 2026. [tcdc.govt.nz/lwdw](https://tcdc.govt.nz/lwdw)



### COMMUNITY BOARD NEWS

At its last meeting for 2025, the Coromandel-Colville Community Board:

- Considered three requests for support from its 2025/2026 Discretionary Fund and approved a total of \$13,200 for the Coromandel Rugby & Sports Club, Colville School and CILT.
- Supported the preferred Option 2 to locate a new taxi stand in the central town outside the Four Square store. Staff were asked to arrange the installation of the taxi stand before Christmas 2025, subject to it meeting the requirements of our Council's Parking Bylaw.
- Requested an update on the Hauraki House carpark resealing. Our Council's project team is coordinating with the Hauraki House Committee. Building work to refurbish the ex-scout den will be done first, followed by the carpark resealing. The work is expected to be finished by Christmas 2025.



A new meeting schedule will be made available for the incoming Coromandel-Colville Community Board after the local body elections.

## What's happening over Labour Weekend?

### Council offices

Our Council service centres (and AA driver and vehicle licensing agents) are closed on Labour Day Monday 27 October. You can still reach us 24/7 at 07 868 0200 or email us on [customer.services@tcdc.govt.nz](mailto:customer.services@tcdc.govt.nz)



### Kerbside Collections

Rubbish and food waste collections are a day later following Labour Day Monday 27 October. Check your local schedule at: [tcdc.govt.nz/bindays](https://tcdc.govt.nz/bindays)

### Transfer Stations

Our seven Refuse and Recycling Transfer Stations are open daily, including Labour Day Monday, during daylight saving hours from 8.30am-5.30pm. Visit [tcdc.govt.nz/rts](https://tcdc.govt.nz/rts)



### Alcohol bans

Alcohol bans are in place over Labour Weekend from 4pm Friday 24 October to 4pm Monday 27 October. [tcdc.govt.nz/alcoholcontrol](https://tcdc.govt.nz/alcoholcontrol)

## READY, SET, VOTE!



If you've missed enrolling or updating your address, the last day to enrol is Friday 10 October.

Your voting papers won't be sent in the mail, but you can still vote. Contact our Electoral Officer on 0800 922 822 to request a special voting pack. Once received, you can post it or drop it off to our offices but make sure you have it in the mail by Tuesday 7 October.

You can deliver or cast your special vote at any of our Council's district offices until midday Saturday 11 October, when voting closes.

We'll have the local election results on our website as soon as preliminary results start coming in on the afternoon of 11 October.

Check out the latest news at: [tcdc.govt.nz/elections](https://tcdc.govt.nz/elections)

@ThamesCoromandelDistrictCouncil  
 coromandel\_tcdc  
 Get our free eNewsletters!  
[www.tcdc.govt.nz/subscribe](https://www.tcdc.govt.nz/subscribe)

[tcdc.govt.nz](https://tcdc.govt.nz)  
[customer.services@tcdc.govt.nz](mailto:customer.services@tcdc.govt.nz)  
Private Bag, 515 Mackay St, Thames  
Phone: 07 868 0200

## Lions Club

By Kerry Whittle



The Coromandel Lions Club warmly welcomes our newest members, Tracey Adams and Janie Bassett. Both are familiar faces in the community and bring valuable experience and skills to our small club. Tracey and Janie were inducted at our dinner meeting on 3 September, which was attended by Lions' Vice District Governor, Amanda Hebben and Zone Chairman, Barb Nippert.

We are grateful that Janie has agreed to relieve Joan Knudsen as our Treasurer. Thank you Joan for all your work to support the Lions, we wish you all the best for your next adventure in Ngatea.

Membership is still wide open! We meet on the 1st and 3rd Wednesday evening of each month and need hands for our working bees (often Saturdays). Ask any of us for more info, we are a friendly bunch and proud to serve Coromandel.

### Storage needed

We have temporary storage for our fundraising equipment thanks to the Thompson family, but we are still looking for a permanent home. We need a lockable space about the size of a single garage with access to drinkable water and a power supply. The Club can pay for this, we



Tracey Adams and Janie Bassett (2nd & 3rd from left) formally inducted as Lions on 3 September

just need to find a suitable spot – can you help? Contact any of us (see end of article).

### Firewood

Our red bags of wood stocked at Coromandel Four Square have sold out! Thank you Chris and Coro Four Square for your generous support in returning all funds raised through these sales to the Lions, so we can reinvest it into the community.

Cheers to Allan James for acquiring firewood logs and for storage of them at James Drainage. And to Mike Huitema from the Pepper Tree for cutting up much of that wood. Some massive logs so not an easy task! You're much appreciated Friends of the Lions.

At the time of writing we have just three truckloads of split dry firewood remaining. \$200 per load delivered in the Coromandel zone, call Sue (021 142 1124) to order. Sue is also taking firewood orders for next year if you'd like to organise that now.

A big thank you to Hika from Coromandel Plumbing for helping us sort out our BBQ trailer.

Finally, we know financial pressure is on across the board – so we are very appreciative of the fantastic community support we receive. People just giving donations to our club and supporting us to keep supporting Coromandel, it keeps us going – thanks!

Coromandel Lions Club contacts: Sue Hughes (President) 021 142 1124, Jean Smith (Secretary) 021 208 7576, Kerry Whittle (Projects) 027 474 2850



The Club enjoys dinner together with Lions' Vice District Governor, Amanda Hebben and Zone Chairman, Barb Nippert at the St Johns rooms, 3 September

## COROMANDEL PLUMBING

(1986) LTD

1490 Tiki Road, Coromandel

CRAIG DUDSON

Phone/Fax 866 8814  
027 482 1291



**Plumbing, Drainlaying and Gasfitting**



- Concrete Floors
- Driveways
- Pathways
- Concrete Cutting
- Landscape
- New Developments
- Grounds Maintenance

**Aaron 0274584044**

Restore & Protect Your Roof with  
**Harmony Roof Painters** 🏡

Is your roof looking tired, rusted, or weather-worn?

Let Harmony Roof Painters bring it back to life with our professional, no-scaffolding roof painting service – trusted across the Coromandel Peninsula.

What our customers say:

"I love my newly painted roof. Gary and his staff were great through the whole process – friendly and helpful. I highly recommend his service."

– Pohutukawa Coastal Chalets 🌴

**Contact Gary Now**  
**021967225**



## Mahamudra Centre

October is a time of new beginnings and continued practice at Mahamudra Centre, and we are delighted to share some of the highlights happening this month with our wider community.

### Sacred Art Workshop – Tsa Tsa Making

**10–12 October**, Mahamudra will host a Sacred Art Workshop focused on the ancient practice of tsa tsa making. These small clay images of Buddhas and deities are not only a beautiful artistic expression but also a powerful form of meditation and merit-making. All materials and nourishing vegetarian meals are provided, and no previous experience is necessary. It's a creative and meaningful way to spend a weekend.

### Discovering Buddhism – second module begins

On **Wednesday 8 October**, we begin the second module of the Discovering Buddhism program. This series offers an accessible yet profound way to explore the foundations of Buddhist philosophy and practice. The focus of this module is How to Meditate, providing practical methods to develop clarity, focus, and peace of mind. Whether you are brand new to Buddhism or continuing from the first module, you are warmly welcome to join.

### Upcoming Retreat: The Psychology of Tantra with Ven. Robina Courtin

**28–30 November**, we are honoured to once again host Venerable Robina Courtin for

a transformative retreat on the Psychology of Tantra. Known for her dynamic and accessible teaching style, Ven. Robina will guide participants through how tantric principles can help us understand and transform the mind. Places are limited, so we encourage early registration for those wishing to attend.

### Prayer List

Mahamudra Centre keeps a prayer list that is read aloud during pujas and practices, dedicating positive energy to those in need of healing, peace, or spiritual support. You are warmly invited to add the names of loved ones – whether for yourself, family, or friends. Names can be added directly on our website: [www.mahamudra.org.nz](http://www.mahamudra.org.nz).

### Opportunities to get involved

Life at Mahamudra is supported not only by resident teachers and staff, but also by the generous help of volunteers and friends. We continue to host gardening weekends, inviting anyone who wishes to spend a few days in the tranquil environment of the Centre while helping care for our beautiful grounds. Volunteers are offered simple accommodation and nourishing vegetarian meals in exchange for their time.

We are also looking for an artist to help with the painting of the base of our Kṣitigarbha statue. This is a unique opportunity to contribute to the sacred environment of Mahamudra. As with the

gardening weekends, accommodation and meals are provided while the work is completed.

### Hiring Mahamudra

Mahamudra Centre can also be hired by groups and organisations seeking a peaceful and supportive environment for their own retreats or workshops. With comfortable accommodation, a large meditation hall, and expansive natural surroundings, it's an ideal setting for spiritual, educational, or wellness gatherings.

### Colville Festival

Looking ahead, we're excited to once again be part of the Colville Festival, a highlight of the local calendar. Keep an eye out for more details on how Mahamudra will be involved this year – it's always a joyful opportunity to connect with our wider community.

### Looking ahead

As we step into October, we are reminded that Mahamudra Centre is not only a place for study and retreat, but also a living community. From daily practices to weekend courses and major retreats, there are many ways to connect and participate. Whether you are joining us for the first time, returning to continue your journey, or simply curious to learn more, you are warmly invited to visit.

For details about upcoming events and how to get involved, please visit our website: [www.mahamudra.org.nz](http://www.mahamudra.org.nz)



**It's time to vote!**

Check out who's standing  
[waikatoregion.govt.nz/candidates](http://waikatoregion.govt.nz/candidates)

Return your voting papers by post  
(before 7 October) or ballot box.  
Voting closes midday 11 October.

**Waikato**  
REGIONAL COUNCIL  
Te Kaunihera ā Rohe o Waikato

**VOTE 2025**  
LOCAL ELECTIONS

**PŌTI 2025**  
NGA PŌTITANGA ā ROHE



**WHITIANGA FLOORING XTRA**

FROM \$39sqm

T&C's apply.

**WOOL SALE**

SHEEPISHLY GOOD DEALS ON WOOL CARPET

**WHITIANGA FLOORING XTRA** P: (07) 866 2836  
68 Albert Street, Whitianga E: [whitianga@flooringxtra.co.nz](mailto:whitianga@flooringxtra.co.nz)

## Christ Church

From the desk of Father Andy

The first two weekends in October will see the annual Open Studios Arts Tour here in town which I greatly look forward to. Presently, churches across the world are spending time reflecting upon the creative hand of God revealed in the world around us, in human lives and beyond as part of the season of creation-tide. I'm very moved to see the creativeness of people at work in the world, especially in the art they produce and Coromandel is without a doubt a cradle of such artistic genius. Congratulations to all the local artists of whatever genre and thank you for the delight and pleasure you offer us.

A few years ago a dear friend of mine by the name of George died. He was a very talented artist and for some years was the artistic director of an Australian fashion magazine. Prior to his death he gave John and I a huge collection of his work which is truly remarkable and although he told us to dispose of his collection we kept it all and will treasure it forever. Despite his giftedness George never exhibited his work and never thought his art was good enough to be seen in public.

Isn't that the case with many of us, we have a gift but don't recognise it or use it. I think about Susan Boyle from Scotland (I hope you've heard of her) who appeared on the Britain's Got Talent show in 2009. Before going on the show she would entertain the patrons in the local working men's club but never did anything else with her amazing talent which has now made her a worldwide phenomenon and a global sensation ... and a very rich woman!

I wonder whatever else might be sitting around in people's lives that could bring happiness and joy to others if it were released and I'm not just thinking about artistic giftedness here. The ASB "Good as Gold awards" featured on TV's "Seven Sharp" reminds us of this and draws our attention to those many individuals recognized for their significant community contributions which are often made behind the scenes. You might want to think about your own giftedness and whether you've ever done anything with it, if not now might be the time to consider that.

Back to George ... although not listed in the official programme for the Open Studios Arts Tour John and I will be in Christ Church Hall on the afternoon of **Sunday 12 October** from 12 noon to 4pm to exhibit a selection of his drawings and paintings and there will be tea, coffee and cake as well ... it can be exhausting work touring all the studios.

One final word and that is that all human creativity comes from the gracious hand of our creator God and as ever I invite you to join us at Christ Church each Sunday at 10am to recognize and give thanks for all the goodness we experience in our daily lives. May the blessing of our God be with you..



## Real Estate Matters

Q – I was reading a NZ Herald article the other day. Apparently there are very high numbers of listings out there. How do I stand out from the numbers to sell my house? How do you attract buyers to my home?

A very good and timely question. It is actually an important question in any market. Gone are the days of listing a property, sitting back and waiting for a phone call to sell the home.

How do you attract buyers to your property? In real estate we have the three p's process – presentation, profile, price.

Presentation, well this is something that is in the owners control. Maybe you can afford to have someone tidy things, landscape, paint. Or maybe you and friends, family etc can help declutter, change cupboard handles, move furniture around to improve the illusion of space and light into a room etc.

Clean the gardens, trim up unruly trees and shrubs. This is cost effective, yet has a high impact on viewers. First impressions count. Especially from the road to the front door. Is the backyard family friendly? Is the pool clean, is the lawn free of family dog faeces. Is the boundary fence standing secure or falling over?

All things that require time and physical labour but maybe not a lot of cash to up spec. Create the illusion of space, and good maintenance.

Price. You need your property and want your property to stand out, to say buy me, to be attractive to the buyer. In this market where there are numerous properties, buyers feel they have the upper hand. The reality is the buyers are price sensitive. Too high they walk away, look elsewhere and may not come back even if you do drop the price later. You have only one opportunity to get their attention. Make it count.

Profile. Talk to the salesperson about the best method of sale to bring your buyers in. Is it auction, price, tender etc. The marketing is like a big flag at the gate saying you are selling, not sitting and waiting. You must get the buyer's attention, tell the buyer not to wait.

Is your marketing method targeting the correct audience? Or just trying to get everyone? Is your marketing primarily local, or going further afield? To really profile your property you need to discuss with the salesperson about marketing, where and who sees the marketing, is it in front of my audience to attract the correct buyers.

Yes you may need to invest in marketing to stand out from the crowd. There are many options, some better value than others. A good marketing campaign that you invest in, that you have input to, can make a big difference. Doing nothing in a market with a high number of listings, well I guess you are working on "time will bring me the right buyer". The "spring market" comes but once a year. Be proactive rather than reactive.

Should you wish to discuss these or other real estate matters, contact Glenn Wells – Licensed Agent. Harcourts Coromandel (licensed REAA 2008) glenn.wells@harcourts.co.nz or 0800 735 788

# Accountants

## The Hauraki Taxation Service Limited

- ▶ For out of town independent accounting advice
- ▶ Established 1982
- ▶ Approved agents for Inland Revenue Department
- ▶ Offices in Coromandel Town & Thames

myob

xero

CASHMANAGER

Smart Accounting Software

95 Kapanga Road, Coromandel

Ph/Fax: 07 866-8660

Em: coro@haurakitaxation.co.nz



**DYNAMIC**  
TREE CARE

Dan Redfern / Arborist

027 451 2224

07 866 8177

dynamictreecare@gmail.com

www.dynamictreecare.co.nz



OUR *Office*

Coromandel Beaches Realty Ltd  
Licensed REAA 2008

07 866 8260

105 Kapanga Road,  
Coromandel

# Harcourts

## Coromandel



*Glenn*  
Glenn Wells  
Sales Manager  
0800 735 788



*Raewyn*  
Raewyn Trail  
Sales Consultant  
021 0201 9111



*Maria*  
Maria Blundell  
Sales Consultant  
022 081 5817



Wyuna Bay 1275 Wyuna Bay Road  
Wyuna Bay Jewel - \$3,200,000



Whangapoua 211 Mangakahai Drive  
Surf Time - \$1,300,000



Coromandel 2886 Long Bay Road  
Open Views : \$1,800,000



Coromandel 40 Victoria Street  
Heart, Soul and Taste - \$999,000



Coromandel 200 Edward Street  
Priced To Sell - \$499,000



Kennedy Bay 1182 Kennedy Bay Road  
Refurbished Retreat - \$619,000



Coromandel 4 Allman Drive  
Elizabeth Park Home - \$560,000



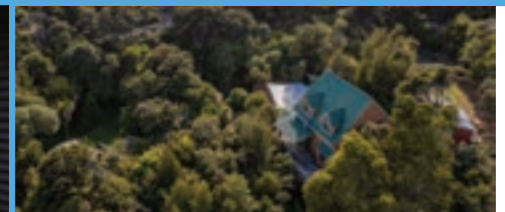
Tuateawa 15 Puriri Place  
Fantastic Getaway - \$728,000



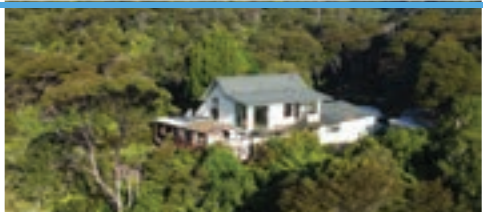
Coromandel: 19 Flays Road  
Coromandel Hideaway - \$749,000



Tuateawa 56 Waihirere Road  
Oceanview Retreat - \$799,000



Little Bay 973/975 Tuategawa Road  
Little Bay Escape - \$785,000



Coromandel: 800 Buffalo Road  
Elevated Views - \$1,175,000



Tuateawa 20 Puriri Place  
Coastal Living Paradise - \$799,000



Te Rerenga: 1246 Whangapoua Road  
Country Living - \$875,000





## CILT

### The Bizarre Auction

This year's auction was filled with laughter, friendly bidding battles, and a wonderful sense of community spirit.

A special thank you goes to Kim Raddick from Coromandel Richardsons Real Estate for bringing his auctioneering flair for the second year running, and to Jim Davis for doing an excellent job as MC. We're also grateful to Weta Cafe for providing such a delicious catering spread that kept everyone fuelled throughout the evening.



This event wouldn't have been possible without the generosity of those who donated items, the energy of our bidders, and the incredible dedication of our volunteers. Together, you made the night such a success – thank you!

### What's on at Te Mana Tangata!

Te Mana Tangata is a community hub in Coromandel that offers support, connection, and opportunities for people to get involved in meaningful activities. It's a welcoming space where you can learn new skills, meet others, and just get together and have some fun during the week. These activities are open to people aged 16–64 who are current MSD clients with a valid client number and who face a barrier to participation. Here's what's on: Monday – Art with Beth Carter, Tuesday – Arts & Crafts, Wednesday – Games Day, Thursday – Ceramic Fun, Friday – Excursion Day.

### Te Puāwai's end of season plant sale!

Join us on 26 and 27 September for our big end-of-season plant sale!

We've got a wide range of eco-sourced native trees looking for new homes – and there's still time to get them in the ground



while the weather's on our side.

Open 9am-3pm each day.

Don't miss out – come early for the best selection!

Located at 150 Pound Street, Coromandel.

### Coromandel Community Van

Our van is back up and running, travelling to Thames and back every Thursday! Door-to-door pick-ups and drop-offs are available within Coromandel town, or you can be picked up from our office at 150 Pound Street. A koha of \$15 for a return trip would be appreciated to help keep the service accessible.

Departure: 9am from the Resource Centre (150 Pound Street)

Return: 2pm from Pak n' Save, Thames

To book a seat, please contact us on 07 866 8358 or come see us at 150 Pound Street, Coromandel.

### Employee Spotlight: Josie Katene

By Sam Ward

At CILT, we have a lovely lady working for us as our Funding & Contracts Coordinator – her name is Josie Katene and she has been a part of our team for a few years now. You may know her from her other roles around town. Josie is a kind, fun-loving and lovely person to know. If you have time, come and say hi!



**COROMANDEL CAR CLUB**

## Car Club

By Bruce Finan

As the car club wants to meet more regularly we have opted for the Star & Garter (the Bowling Club is not always open) so we will meet each week now 4pm Thursdays, thanks

Also we won't be under the Bowling Club section

Great run Sunday the 7th to Pauanui, almost a 100 cars gathered up from Coromandel to Pauanui for lunch at the Palms Resort Golf Course, usual Happy hour at the Club, lots of action from now on as the weather Improves, All Ford Day in Hamilton and many of us attended that day, lots of CAR ACTION going on for October.

Contact Bruce Finan 027 249 0878

**FOR EXCEPTIONAL  
WINDOWS & DOORS**

**FAIRVIEW THAMES**

10 Millar Place, Kopu, Thames

Love  
your  
view

**fairview**  
EXCEPTIONAL WINDOWS & DOORS

P: 07 868 9105  
office@fairviewthames.co.nz  
www.fairviewthames.co.nz



## The Colville Project

**Strengthening our communities: the vital role of community hubs in building thriving rural areas**

*A two-part series by the TCP team.*

### Part Two: The Colville Project, learning from success stories

Across New Zealand and internationally, communities like ours have successfully developed thriving community hubs that serve as models for The Colville Project.

In rural areas specifically, the National Rural Age-Friendly Initiative in the United States shows how community hubs can support ageing in place through coordinated services, volunteer programmes, and inter-generational connections. These initiatives recognise that rural communities possess unique strengths, including high levels of social cohesion and strong community ties, that can be leveraged to overcome infrastructure limitations.

### Addressing Northern Coromandel's unique challenges

Our region's challenges are well-documented. The 2020 Age-Friendly Community Survey for the Coromandel-Colville ward highlighted significant concerns about access to healthcare, with participants noting that



access to hospital/health care/aged care facilities is a key issue facing older people in the community. The survey found that while residents love living here for the lifestyle and safe environment, inadequate health and social care services remain a primary concern.

With a deprivation index rating of 9, one of the highest levels of socioeconomic disadvantage in New Zealand, our community faces compounded challenges. High deprivation areas are associated with worse health outcomes and limited access to essential services, making community hubs even more critical for addressing these inequities.

The recent launch of the Extended Care Paramedic service in Northern Coromandel represents one innovative response to these challenges. This collaborative initiative between Pinnacle MHN, Hauraki PHO, Hato Hone St John, and local practices demonstrates the power of partnership in addressing rural health access issues exactly the kind of collaboration The Colville Project enables.

### Environmental restoration and community engagement

Community-led decision making, combined with traditional and modern practices, creates the most sustainable environmental outcomes. Our weed and pest management programmes and environmental restoration initiatives provide multiple benefits: they improve our local environment, create volunteer oppor-

tunities that build social connections, and enhance skills. Research shows that environmental volunteering contributes significantly to community wellbeing and social capital.

### Economic development and social return

The economic impact of community hubs extends far beyond their immediate costs. In the UK research shows community hubs make up over a third of the community business market and are critical in connecting local people, addressing social isolation, and improving health and wellbeing.

Their influence extends throughout the community, creating vibrant, thriving places for the long term.

### Building on community strengths

Our 2017 feasibility study showed tremendous community support for The Colville Project, with 119 people attending consultation workshops across the Northern Peninsula. This level of engagement reflects what researchers identify as a key success factor for community hubs: genuine community ownership and participation in planning and governance.

The Colville Project represents our commitment to ensuring that living in rural New Zealand doesn't mean accepting second-class services or opportunities. Together, we're building something extraordinary.

Follow our journey on Facebook: @thecolville-project

4  
SQUARE

COROMANDEL

YOUR  
LOCAL  
FRESH  
GROCER



OPEN 7 DAYS  
50 WHARF ROAD, COROMANDEL



027 336 3919

## Spring Special

- Roof Treatment
- Gutter Clean
- House Wash
- Mineral Water
- Window Wash
- \$599.99 plus GST

Term & Conditions apply

Contact 'Wayno'

corowashnwaterblast@gmail.com

## Open Floor Dance with Lisa in Coromandel Town

By Lisa Corston-Blanche

Monthly Sunday Morning “Just Dance” session starts this month! **Sunday 19 October**, at Coromandel Citizens’ hall, 10.45am-12.15pm. This first Sunday is free for every body. An invitation to come check it out.

Turn up and simplify life for an hour and a half. Feel the goodness of being alive, in this human body right now. Be moved, supported, nourished and held by the music. You don’t actually have to “do” anything, simply showing up just as you are is enough.

These Sunday morning dances are a great opportunity to shake off your week, to press “refresh” on the routine and chaos of daily life, to gift yourself the “time-out” we often don’t offer ourselves because we are so busy with our list of doings.

I offer music you can rest into, tracks that scoop you up and shake you out, flavours that range through luscious, deep, warm, soaring, fun, quirky, edgy, unusual, tender, gentle, quiet, great bass ... music that inspires creative juice from within the bones, and beats that reach into our souls with a yum! ... although perhaps not at once in a single dance session!

So what is it you need from the dance? perhaps being gentle with yourself is needed, maybe this hour and a half is finally a



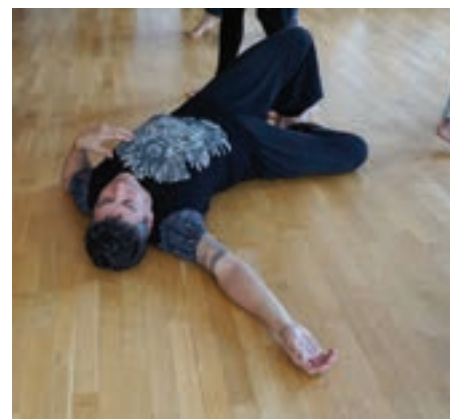
moment to simply enjoy a great dance ... or perhaps you feel the need to sweat out the devastation and dehumanization that is occurring in the wider world and the massive “call to action” that is reverberating throughout millions of human hearts at ground level across continents and oceans. Each time we turn up the dance is different, the music is different, we are different, that is how and why these sessions can become a practice, we keep showing up, just as we are, so our deep humanness, can thrive.

Simple tips if you’re feeling shy or self-conscious about turning up for the first time, firstly that’s totally normal and ok, remember there are no ‘steps’ to learn, if you get stuck and not sure how to relax into movement then try following your feet through the room, or allow your hands to respond to the music, perhaps even to just one instrument within the track ... then allow the rest of your body to simply follow.

Know you are welcome however your body wants to move.

And if you are already hooked on the dance, spread the word and bring another human with you.

So I put out the call to you, Come feel alive in the human body you inhabit, the body born from your ancestors ... move, sweat, be, dance ... the dance floor welcomes you,



just as you are.

Tuesday classes in October: **7 October** with Pippa @pranadance, **21 October** with Lisa, **28 October** with Pippa @pranadance, all at Mana Retreat Centre, 10-11.45am, \$25 to \$20\* sliding scale, choose as you can sustain. \*And if this is not possible pay as you can.

Monthly Sunday Morning “Just Dance” with Lisa begins this month! **Sunday 19 October** at Coromandel Citizens’ hall, 10.45am-12:15pm, minimal instruction.

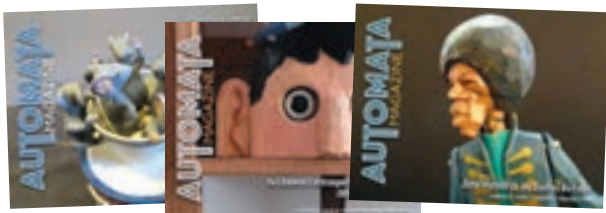
Your first ever “dancing w/lisa” class is free whether it be a Tuesday or Sunday, simply come up and say hi at the beginning of class.

Please note this dance space is for ages 14 and above. No alcohol/drugs. Dance with you soon, Lisa.

If you would like to be on my email or txt reminder lists then flick me a message at: wildbonesopenfloor@gmail.com, facebook/instagram: wildbonesopenfloor, txt 021 175 4741. Otherwise see wildbonesopenfloor.co.nz for all other info

## Ever heard of automata? Do you like woodwork, cogs, engineering or quirky contraptions? Then you might like automata.

An automaton (plural, automata) is a representational kinetic sculpture. It contains moving human or animal figures or recognizable inanimate objects from real life, and is mechanically driven, either by a hand crank or motor.



**AUTOMATA**  
MAGAZINE

Automata Magazine is an international online publication for builders, collectors, restorers, and lovers of automata. It covers all aspects of these fascinating machines, including collecting them, their history, building them, restoring them, and more...

**For more information,  
and to subscribe, go to:  
[www.automatamagazine.com](http://www.automatamagazine.com)**



**ANDREW RICHARDSON**  
CERTIFYING PLUMBER

**0274 712 247**

[MATARANGIPLUMBING@gmail.com](mailto:MATARANGIPLUMBING@gmail.com)



## Boundary Creek Bridge replacement / Thames Coast road closure

**Monday 13 October to Tuesday 28 October:** Road open – single lane with temporary traffic management & speed restrictions.

From **Wednesday 29 October, 5am** – for 7 days: Full closure of SH25 between Te Puru and Waikawau.

Access will still be available to businesses and properties up to the bridge from both sides. Detour via SH25A Kopu-Hikuai through Tairua and Whitianga.

**Early to late November:** Road reopens with single-lane restrictions.

**From December:** New two-lane bridge fully open – ahead of the summer season.

It's important that everyone plans ahead and shares this information with your visitors.

The outcome will be worth it: a safer, stronger, two-lane bridge for the busy summer ahead.



## The Hauraki Coromandel Justices of the Peace Association

### Celebrating 60 Years of JP Service in Hauraki Coromandel

The Hauraki Coromandel Justices of the Peace Association will be celebrating 60 years of dedicated service to our region this month – a milestone that reflects decades of commitment to justice and community support.

Here's a brief history of the Hauraki Justices of the Peace Association, now known as the Hauraki Coromandel Justices of the Peace Association Inc:

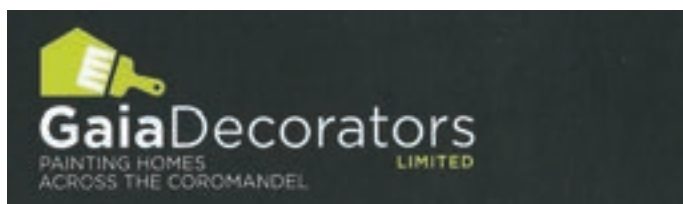
- **Origins:** The Association began as a Thames Branch of the Auckland Justices of the Peace Association in 1958. In 1965, it became an independent association in its own right.
- **Founding Figures:** The formation of the independent Hauraki Association was led by Mr Harry Israel, an Auckland Justice, and Mr Lyall Noakes, who became the first Registrar. Mr W.D. (Bill) Hare from Whenuakite was appointed the first President.
- **Historical Context:** Justices of the Peace were active in the Thames area as far back as 1875, during the Gold Rush era. Their role has evolved significantly since then—from dealing with lawlessness to primarily ministerial duties such as witnessing documents, certifying copies, and taking oaths.
- **Current Scope:** Today, the Association supports 97 Justices across the Coromandel Peninsula, Thames, Hauraki Plains, Waihi, and Whangamata. While most focus on ministerial duties, a select few are trained for judicial roles and serve as Issuing Officers or in court.
- **Governance:** The Association is managed by a Council comprising a President, Vice-President, Immediate Past-President, five Councillors, a Registrar, and an Education Officer.
- **Recent Presidents:** – Mr Adrian Catran, JP – President in 2022 – Mr Kevin Firth, JP – President in 2023 – Mrs Cherie Staples, JP – President in 2024 (currently Immediate Past President) – Mr John Tregidga, MNZM JP – President in 2025 (Current).



## Chess Club

By Mike Mann

Coro Chess Club is alive and well. We meet weekly at Weta Cafe, Fridays at 9.30am. Turn up for a bit of fun. Spring offensive coming up versus Whitianga club.



**Mark Gaia** 021 295 5532 | 07 866 8157  
COROMANDEL | gaiadecorators@gmail.com  
[www.gaiadecorators.co.nz](http://www.gaiadecorators.co.nz)

**FROM LEAKS TO LUXURY**

- WATER FILTRATION SYSTEMS
- WATER LEAKS
- SEPTIC SYSTEMS
- SPOUTING
- GAS FITTING
- RENOVATIONS
- DRAIN UNBLOCKING

**YOUR PLUMBING EXPERTS IN COROMANDEL**

**CALL NOW**

**021 0263 4206**

[jo@matthobbsplumbing.co.nz](mailto:jo@matthobbsplumbing.co.nz)  
[www.matthobbsplumbing.co.nz](http://www.matthobbsplumbing.co.nz)  
336 WHARF RD, COROMANDEL

## Anns Good News Naturally

### Gut-brain connection: Coeliac disease and dementia (and more)

Every system in your body depends on optimum efficiency in your digestion tract.

- 1) Do you alternate between constipation and urgency?
- 2) Do you get indigestion?
- 3) Does your stool have an oily appearance?
- 4) Do you suffer from frequent intestinal gas or bloating?
- 5) Is stomach or intestinal pain a regular occurrence?
- 6) Do you get gastric reflux? Do you get it frequently?
- 7) Are headaches a common occurrence?
- 8) Are you allergic or sensitive to many foods?
- 9) After eating do you find you experience joint or muscle pain?
- 10) Do you have bad breath?
- 11) Are you depressed, subject to mood swings?
- 12) Do you have trouble keeping your weight under control, even though you watch your diet?
- 13) Is your blood sugar elevated?
- 14) Do you suffer from kidney stones?
- 15) Do you suffer from gallstones?
- 16) Is your blood pressure higher than it should be?

As I have been teaching for decades, our digestive system is connected to our nervous system, and both are linked through cells of the immune system.

This is why your gut is the launch pad for numerous symptoms affecting parts of your body far distant from your gastrointestinal tract. And vice versa.

A glitch in the assimilation and elimination can make you sick, and because of the interconnections with the body's nerves and immune mechanisms, all sorts of things can cause such a glitch.

**Example: Coeliac Disease and Dementia**  
Coeliac Disease is a disorder where the lining of your small intestine is damaged by the protein gluten, found in certain grains. There also may be genetic susceptibility to gluten intolerance, which can be reversed.

Its symptoms are pain, discomfort, chronic



constipation, bloody diarrhoea, fatigue, in children failure to thrive, auto immune disease, and due to the gut brain connection, a high incidence of dementia. This starts with the activation of the intestinal immune system and ends with the triggering of brain inflammation.

The gut system reacts to gluten like a hostile foreigner, activating inflammatory messenger molecules, or carriers of messages, that travel through the blood stream from the gut immune system to the liver.

Kupffer cells are the livers specialized immune cells and are derived from the same lineage as the gut stimulate their relatives, the Kupffer cells, to release messengers from their genes.

These messengers in turn activate an inflammatory response in white blood cells that are also part of that same immune cell lineage. These white blood cells then travel to the blood brain barrier, where they trigger an inflammatory response in cells called microglial cells, which are also relatives of the gut immune cells, the Kupffer cell in the liver, and the circulating white blood cells.

In fact, the microglial cells are the brain's

immune system, which produce their own inflammatory messengers. These cause collateral damage to the neurons of the brain, resulting in memory and cognition loss, and dementia. A classic example of the gut connected to the liver, connected to the immune system, connected to the brain.

Focus on the system's biology, therefore, should be not to treat dementia or the brain system with a drug, but to treat immune inflammation through the gut. As I've proudly and successfully been doing for decades.

I use my clinically proven programme to manage complex health problems associated with all imbalances of digestive assimilation and elimination process.

\*Minerals Deficiencies? [www.activeelements.com](http://www.activeelements.com), username-259077, password-579819.

Every cell requires strong structure, for best function.

\*Live Blood Screening – Liver stress, immune cells not viable? Cellular dehydration? Take the test.

Phone or text for an appointment 021 046 1647



## Patchwork & Quilters

By Sue Smith

We had a fun class with a good way to use up scraps. Thanks Annette for your ideas and guidance. For some crochet was a new technique to add to these lovely fabric boxes which can be used for storing fabrics or just bits and pieces. Will make a great gift too.

Sharon made the machine embroidered bag along with hand embroidered needle book with a scissor holder and pincushion. Sometimes embroidery spills over into our patchwork craft which is lovely to see.

We meet at the St John Ambulance Rooms on the 1st and 3rd Monday of each month, 9.30am to 3.30pm. Feel free to call in and see what we are up to.

Contact – President, Fiona Neal 027 373 6991 or Secretary, Michaela Green 021 0287 1879

## Natural Medical Centre

*The natural alternative for all your health requirements*

For appointments,  
phone or text: 021 046 1647  
or email: [annk-b@ps.gen.nz](mailto:annk-b@ps.gen.nz)

[www.naturalmedicalcentre.co.nz](http://www.naturalmedicalcentre.co.nz)

### Ann Kerr-Bell

B.Hlth.Sc. (Comp.Med.)  
Adv.Dip.Naturopathy  
Adv.Dip.Med.Herb. MNZAMH

Naturopath  
Medical Herbalist  
Nutritionist  
Massage Therapist

# CORO GYM

[COROGYM@GMAIL.COM](mailto:COROGYM@GMAIL.COM)





## Library News

By Jasmine Strauss, Librarian

The school holidays are here! We've got some great new children's books in, so feel free to bring the kids along for a browse during the break. If your child would like to take books home, junior memberships are free if their parent is a member. Adult memberships are \$25 per year.

Our carboot sale is coming up on **Saturday 4 October**. Come along to see what's on offer, or bring your car and sell a few things yourself. It's only \$5 per car and always a bit of fun.



### Latest books

We've had some exciting new titles arrive at the library recently. These ones tend to go out quickly, so if something catches your eye, you're welcome to give us a call, send an email, or pop in to place a hold.

#### *Delirious* by Damien Wilkins

This is a thoughtful new novel by New Zealand author Damien Wilkins. It follows Mary, a retired cop, and her husband Pete, a former librarian, as they move into a retirement village. They're dealing with ageing, loss, and memories that resurface, including the death of their son many years ago. It's a gentle but powerful story about family, grief, and the surprising moments that can come later in life.

#### *Clown Town* by Mick Herron

The newest book in the Slough House spy series. This one follows River Cartwright as he looks into a mystery left behind by his grandfather, a former MI5 boss. What starts out as a quiet investigation quickly turns into something much more dangerous. It is clever, darkly funny, and full of twists. A great read if you enjoy smart thrillers with strong characters.



## Mana

### From Seed to Blossom: Living Our Purpose Daily

*"Be the change you want  
to see in the world" –  
Mahatma Gandhi*

Kia ora Coromandel  
community.

Last month, we explored how we set new intentions. Now, we shift our focus to how we bring these to life through our daily practice. Perhaps it's practicing patience, showing more gratitude or kindness, or choosing to listen deeply instead of reacting.

Like seeds planted in the soil, intentions need to be nurtured with conscious action. Over the past month, we've witnessed this unfolding within our own team, and it has been both inspiring and deeply rewarding to share these moments together as a community.

We invite you to reflect on your own journey: what does living your intention look like for you? How are you bringing this into being in your everyday life?

Coming up, our very own Hedwig Bakker will be guiding a three-day Qi Gong retreat **28 November to 1 December**, offering a wonderful opportunity to immerse yourself in intentional and mindful practices. This retreat is open to locals who may wish to commute from home, with onsite accommodation also available for those who want to fully unwind. For enquiries and bookings, please contact: [be@manaretreat.com](mailto:be@manaretreat.com).

### Community Open Floor Dance Classes

Upcoming dates: **7, 21, 28 October, 4, 11, 18, 25 November, 9 December**.

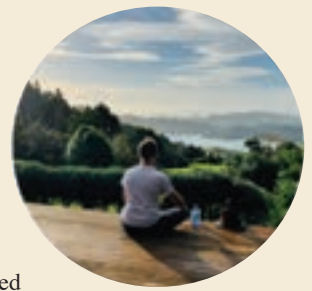
Join us for a fun and expressive morning of movement. No experience needed – just come as you are and dance with us!

Time: 10-11.45am, cost: \$20-\$25 (sliding scale).

We look forward to connecting with you and may we move into each spring day ahead with purpose together.

Arohanui, the Mana Team,

For all bookings and enquiries, please contact [www.manaretreat.com](http://www.manaretreat.com), 07 866 8972, [be@manaretreat.com](mailto:be@manaretreat.com), 608 Manaia Road, Coromandel



**FROGS LILY PAD**

**021 051 2649**

FROGGY

**027 815 2528**

FABIEN

**ALL BUILDING PROJECTS  
LARGE OR SMALL**

[froglilypad@xtra.co.nz](mailto:froglilypad@xtra.co.nz)

**CONSTRUCTION**

LICENSED BUILDING PRACTITIONERS  
EST. 2004

**EARTHWORKS**

We have a wide range of earthmoving equipment, call us before you build for foundation works, driveways, landscaping and more.

**UPCOMING RETREATS & EVENTS**

Bookings: [www.manaretreat.com](http://www.manaretreat.com)

OCT 3 - 5	Tony Backhouse Sing Your Heart Out Weekend
OCT 10 - 12	Release, Rest & Rejuvenate with Stella Goetz
OCT 13 - 19	Cosmic Doorway Retreat
OCT 22 - 24	Medical Mindfulness - Private Event
OCT 24 - 27	Spring Coming Home to Yourself with the Mana Team
OCT 31-NOV 2	Humming with Karla Brodie
NOV 6 - 9	Silent Meditation Retreat with Amrit Saraswati & Scott Connor
NOV 14 - 16	Relax & Wellness Weekend with the Mana Team
NOV 21 - 24	The Perceptual Journey Continues Study & Retreat
NOV 28-DEC 1	Qi Gong Retreat with Hedwig Bakker

**COMMUNITY EVENTS**

Open Floor Community Dance 7, 21, 28 Oct, 4, 11, 18, 25 Nov, 9 Dec  
TIME: 10:00-11:45AM

[be@manaretreat.com](mailto:be@manaretreat.com) | 608 Manaia Road,  
Coromandel New Zealand, 3581  
+64 (07) 866 8972

# mahi toi ARTS

## Driving Creek Pottery Doings No. 8

By Matilda Halley

### Ngā Kaihanga Uku & Friends full schedule confirmed

We have exciting news to share this month. The full schedule of workshops, talks, and exhibition details for the Ngā Kaihanga Uku (Māori Clay Artists Collective) and Friends visit in November has now been confirmed. This event will be a historic occasion, so don't miss the chance to get involved and learn from these master Toi Māori practitioners.

The visiting artists include Baye and Gemeaux Riddell, Wi Taepa, Carla Ruka, Dorothy Waetford, Rhonda Halliday, Todd and Karuna Douglas, Amelia Blundell, Fleur Palmer, and Kaeleb Ngatai. Workshops will run daily at DCR from **2-7 November**. Spaces are limited, so be sure to book at [www.drivingcreek.nz/workshops](http://www.drivingcreek.nz/workshops).

There will also be evening artist talks at the Coromandel Citizens' Hall. On **Sunday 2 November**, the full Ngā Kaihanga Uku and Friends rōpū will hold a public demonstration and Q&A session (5-7pm, \$10 entry on the door). From **Tuesday 4 to Thursday 6 November**, individual artist talks will run from 5-7pm, entry by koha. Bring the whole whānau and share in this very special kaupapa. For full details, see the event calendar opposite or visit [www.drivingcreek.nz/ngākaihanguku](http://www.drivingcreek.nz/ngākaihanguku).

Our July and August residents included Phil Root (UK), Courtney Rodgers (Kāpiti), Jordie MacDonald (Ōtautahi), Hannah Paradis (Canada), Hayley Arjona and Lincoln Frok (Victoria), Elise Gellweiler (Sydney), Jasmine Clarke (Arrowtown), Sarah Bookman (Auckland), Nika Gorosghko (US), Marta Barbaglia (Italy), and Theo Leach (Matakana). You can read more about our residents and their work on our online journal: [www.drivingcreek.nz/journal](http://www.drivingcreek.nz/journal).

In September, we welcomed our very first pottery apprentice to the production team. Millie Godfrey, originally from Tauranga, has a background in English literature and organic horticulture, but this is her first foray into the world of clay. You'll be hearing more from Millie in the months and years to come, but if you'd like to meet her in person, come along to our Labour Weekend Pottery Seconds Sale, Saturday and Sunday from 10am-2pm.



## Coromandel Players

Step back in time to the golden age of wireless with a live evening of classic radio theatre!

First, join the world's most famous detective in a Sherlock Holmes mystery

Then, meet two spirited women on the home front in a warm and witty wartime story of friendship, resilience, and doing one's bit – with a few laughs and a bit of mischief along the way.

Performed live with vintage flair, sound effects, and period music, this is nostalgic entertainment at its best. Perhaps even a sing-along!

Three performances only – don't miss it! **Friday 17, Saturday 18 and Sunday 19 October.**

Tickets on sale at our wonderful Coromandel Town Information Centre from the beginning of October.

We will be serving drinks at our new increased prices (only \$7), please bring cash. A special supper plate will also be available. Liz will be cooking.



**DRIVING CREEK  
POTTERY**

**LABOUR WEEKEND  
SECONDS SALES**

**SATURDAY 25TH  
AND SUNDAY 26TH OCTOBER**

**10AM - 2PM**

**DRIVING CREEK BASEYARD  
(BY THE TRAINS)**



## Coromandel Art Group

By Lindsay Nicholls

It is with great sadness that we remember one of our retired members who recently passed while residing at Phoenix House the last 18 months.

Barbara Peddie was a valued member who painted to perfection. She was a great secretary for our club for many years as well. She always gave her best and did a lot of research and homework before coming to our meetings with the information we needed.

Many of Barbara's paintings have been sold at our exhibitions and some of her paintings are still displayed around town.

Barbara managed to venture out to our last annual exhibition in January this year, with assistance of caregivers and her trusty scooter.

Our thoughts go to her family at this time.

We are still looking for new members. We meet at the Coromandel Airfield clubrooms on a Thursday morning 9am-12pm.

Call Lindsay 027 494 9738 for more info





# EVENT CALENDAR

## NGĀ KAIHANGA UKU & FRIENDS

### 2025

DAILY WORKSHOPS

02  
NOV

10AM: WHANAUNGATANGA,  
SHELLAC RESIST, WATER  
ETCHING WITH DOROTHY  
WAETFORD

5-7PM: NGĀ KAIHANGA UKU  
PRESENTATION AND Q&A

📍 COROMANDEL CITIZENS' HALL

03  
NOV

10AM: WHEEL THROWING WITH KAELEB NGATAI

1PM: KŪMARA ORA WITH AMELIA BLUNDELL

04  
NOV

10AM: GLAZES -  
INSPIRATION AND  
DISCOVERY WITH KARUNA  
DOUGLAS

5-7PM: ARTIST TALK - CARLA  
RUKA, KALEB NGATAI &  
AMELIA BLUNDELL

📍 COROMANDEL CITIZENS' HALL

05  
NOV

10AM: MAKE A CARVED  
CERAMIC ROLLER WITH  
FLEUR PALMER

5-7PM: ARTIST TALK -  
RHONDA HALLIDAY, KARUNA  
DOUGLAS & TODD DOUGLAS

📍 COROMANDEL CITIZENS' HALL

06  
NOV

10AM: PUPURANGI  
PENDANTS WITH TODD  
DOUGLAS

5-7PM: ARTIST TALK -  
DOROTHY WAETFORD &  
FLEUR PALMER

📍 COROMANDEL CITIZENS' HALL

07  
NOV

10AM: IPU KI TE WHENUA - HANDBUILT CLAY VESSEL TO HOLD  
PLACENTA OR ASHES TO BE RETURNED TO PAPATŪĀNUKU WITH  
RHONDA HALLIDAY

08  
NOV

NGĀ KAIHANGA UKU & FRIENDS  
AHI KAA EXHIBITION OPENING  
6PM

09  
NOV

11AM: CURATOR & ARTIST TALK  
WITH CHANTEL MATTHEWS,  
NGĀ KAIHANGA UKU & FRIENDS

ARTIST TALKS & PRESENTATIONS

BOOK NOW



DRIVING CREEK  
380 DRIVING CREEK ROAD,  
COROMANDEL TOWN

DRIVINGCREEK.NZ/NGAKAIHANGAUKU

carlaruka.com

CREATIVE HE MĀRA TOI  
COROMANDEL WHĀU  
TRUST

SUPPORTED BY

Toi Māori Aotearoa  
Maori Arts New Zealand

COROMANDEL

# mahi toi ARTS continued

## The Coromandel Open Studios Arts Tour 2025

The Coromandel Open Studios Arts Tour is back this month! The much-loved event takes place over the first two weekends of October every year – this year on **4 & 5 October** and **11 & 12 October**. Running alongside the tour is a nine-day exhibition at Hauraki House Gallery on Kapanga Road, open daily from **4-12 October**, 10am-4pm.

Across the two weekends, local artists will open their studios to the public, offering a rare opportunity to view a wide variety of artworks, meet the makers, and see their creative spaces in action. This year, 33 artists are taking part, working in mediums that range from painting and ceramics to sculpture, jewellery, woodwork, textiles, photography, and more.

This is a free, self-guided tour with most studios within an easy 10-minute drive of one another, and many located close enough to reach on foot or by bike from Coromandel Town. If you haven't picked up a guide yet, they are available at the Coromandel Information Centre, The Source, and various outlets across the peninsula. A digital version can also be downloaded from [www.coromandelartstour.co.nz](http://www.coromandelartstour.co.nz).

The Hauraki House Gallery exhibition is the perfect starting point. Each artist has at least one piece on display, helping visitors decide which studios they'd like to explore. The exhibition kicks off with an Opening Night on **Friday 3 October** at 5.30pm, featuring a special guest speaker. Everyone is welcome.

For many artists, the tour is the highlight of their creative year, and they work tirelessly to prepare for it. Some studios remain open for the full nine days (look for the flags), and others welcome visitors year-round – just check their "open" signs or use the guide to contact them directly.

The 33 participating artists for 2025 are:  
Allan Beaver (pastel)  
Ashley Thor (ceramic)  
Barbara von Seida (paint)  
Bob Drummond (paint/mixed media)  
Charlene Scott (ceramic/paint)  
Cindy Alger (paint/sculpture)  
Diann Cade (paint/drawing)  
Donna Scatchard (paint)



Elisabeth Carter (paint)  
Genevieve Morley (paint)  
Greg Taylor (wood)  
Iona Matheson (ceramic/sculpture)  
Judy Wood (paint/jewellery)  
Kay Ogilvie (ceramic)  
Kevin Brett (woodwork)  
Kim Brett (glass/jewellery)  
Libby McColl (paint)  
Lynne Fenwick (textile)  
Matilda Halley (ceramic)  
Murray Rainey (ceramic)  
Natasha Hunter (paint/sculpture/ceramic)  
Nigel Sparrow (textile/photography/stonework)  
Paul Cornwell (paint/drawing)  
Pete Sephton (printmaking)  
Petra Meyboden (ceramic)  
Raewyn Penrose (textiles)  
Robyn Vinten (ceramic)

Rose Dean (paint/mixed media/drawing)  
Rosemarie Murphy (pastel)  
Sally Tennent-Brown (textile/jewellery/mixed media)  
Saskia Riemersma (pastel/paint/drawing)  
Tony Calsafferri (paint)  
Vaughan Udall (paint/mixed media)

We would also like to acknowledge the passing of one of our artists, Debra Dickson, last month following a short illness. She was to have taken part in this year's tour and will be sadly missed. Our thoughts go out to her friends and whanau.

If you would like more information about the Coromandel Open Studios Arts Tour and the participating artists, visit [www.coromandelartstour.co.nz](http://www.coromandelartstour.co.nz) or follow the Facebook/Instagram pages CoromandelArtsTour for updates. We can't wait to see you there!

## The Orange Box

"The Orange Box" is at the Coromandel Area School Hall (entrance fee a koha) on **Thursday 2 October**.

"The Orange Box" is the creation of Naranjarte, an extraordinary Spanish puppet theatre and circus company founded by Ana Lorite and Sergio Aguilar in 2011.

The production will be performed in 18 small towns throughout the South and North Islands, with the support of Arts on Tour NZ, and will delight children and adults alike, and comes to Coromandel as follows:

**Thursday 2 October** 11am, Coromandel Area School Hall, koha.

All children must be accompanied by an adult.



To help us set up the hall, please register your name and the number of children you're bringing by phoning the Coromandel Town Information Centre 07 866 8598.

Renowned for its unique fusion of puppetry and juggling, Naranjarte's performances aren't just shows; they are immersive journeys challenging perceptions and transporting audiences to realms of wonder and delight.

Beyond entertainment, the show carries a deeper message, inviting us to step outside the box, where true magic unfolds. Join this one-of-a-kind adventure that transcends the ordinary and opens the door to the extraordinary.



**GD HAULAGE**  
Cartage Contractor

Demo  
**021 902268**  
[gdemus@outlook.com](mailto:gdemus@outlook.com)



## Thames Music Group

### Sunday afternoon concert

Thames Music Group's September Sunday afternoon concert features Zest String Quartet.

Zest String Quartet is a collective of Auckland musicians which aims to curate unforgettable live music experiences. Featuring Amber Reed and Joo Yeon Lee (violins), Charlotte Francis (viola) and Sangah Park (cello) Zest performs in a growing number of public recitals and festivals, and have collaborated in performance with artists such as Chong Nee, Anonymouz and Lana Fia.

Join us for an afternoon of musical variety from the Zest String Quartet, at St George's Church, Thames.

**Sunday 12 October** at 2pm, St George's Church, Mackay Street, Thames.

Tickets: \$20/adult, \$15/TMG member, Free entry/under 18 yrs old.

### Friday lunchtime concert

Thames Music Group's October Free Friday Lunchtime Concert, will feature Thames Citizens' Band.

The Thames Citizens' Band is 156 years old. TCB morphed out of the early Thames military bands. Time changes everything and has certainly changed the band. From brass band roots, TCB became a concert wind band with flutes, clarinet, saxophone – instruments not typically found in brass bands. The current TCB also includes a growing string section.

For this concert Thames Citizens' Band are playing music that notes the passing of time, using a conglomeration of tastes, genres, and styles of music. They'll take you through delight, awe, reflection, toe-tapping, memory and whimsy.

Thames Citizens' Band, **Friday 24 October**, at 12.15pm, St George's Church, cnr Mary and Mackay Streets, Thames. Free entry, koha/donation gratefully accepted.

Contact: [thamesmusicgroup@yahoo.co.nz](mailto:thamesmusicgroup@yahoo.co.nz)



Zest String Quartet



Thames Citizens' Band

## Pastel Artists Coromandel

By Rosemarie Murphy

Rose's Gallery, 860 Tiki Rd, Coromandel Town will be open during the first two weekends in October for the Coromandel Arts Tour. Rose, Saskia and Rosemarie will be exhibiting their work during this time.

In the meantime everyone in the Pastel Group are busy producing their masterpieces for the Annual Pastel Plus Exhibition at Hauraki House held over Labour weekend from **24-28 October**.

Pastel Artists Coromandel meet every Monday at Rose's Studio, 86 Tiki Rd, Coromandel from 9am to noon. Come along join in.

Contact Alan Beaver 07 866 803

**Everyone knows the best place to go fishing is near a mussel farm**

*Please follow these guidelines to keep everyone safe*

- Keep 30 metres from working mussel barges at all times
- Don't tie-up to a line being worked on
- Never cast your line towards a mussel barge – farmers have been injured from flying hooks and sinkers
- No anchors. Tie-on to a longline buoy or use approved mooring hooks
- Minimise your speed and wake
- Never drive across the lines

Coromandel MFA  
www.coromelfa.co.nz

Walkato

GIVE A LITTLE SUNDAYS

**\$12 PIZZA SUNDAYS**

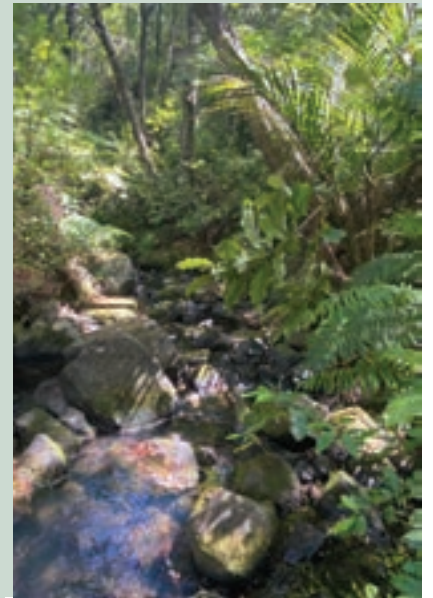
**\$1 from every pizza is donated to a local community service**

**ALL DAY EVERY SUNDAY DINE IN ONLY**

**STAR & GARTER HOTEL**  
Coromandel Town

CONDITIONS APPLY

# mahi toi ENVIRONMENTAL



## Forest & Bird Upper Coromandel

By Jill Pierce

### Water monitoring

Upper Coromandel Forest & Bird is launching a new project to test water quality in streams which flow into Coromandel Harbour. Our steep hills and surrounding landscapes comprise a mix of land uses which naturally affect the water quality in streams. For example, floods and slips from storms, debris from earthworks and building sites can impact our waterways which flow into the harbour.

It is important to have good data on the health of our streams. We can assess their sediment load, clarity, e-coli count and levels of health through the presence of native freshwater species. We aim to establish a benchmark and ongoing data set for our local waterways. The data will be deposited with the NZ Water Citizens website, this is a landing page for anyone in New Zealand interested in volunteer stream monitoring, providing a database for storing, understanding, presenting data, and for

viewing data from other sites.

The main streams in the Coromandel catchment area are the Waiau River and the Whangarahi, Karaka, Huaroa, Pitoti and Awakanae streams, these flow through native forest, pine plantations, farmland, lifestyle blocks, the town and its surrounding residential areas. There are also historic mine sites in the catchment.

The project will monitor a selection of chosen streams entering Coromandel Harbour on a seasonal (quarterly) basis. We want to work with iwi and landowners to establish suitable sites, gain consent and access and create ongoing relationships. The idea is to periodically do environmental DNA testing and also to potentially run a workshop to invite all interested parties and run through the processes.

We will use a SHMAK (Stream Health Monitoring and Assessment Kit) and draw on the expertise of other groups such as the Colville Junction water monitoring group who have been doing it for a number of years. The WRC will monitor Waiau River in the second week of September. Please make contact with Jill Pierce [j.pierce@xtra.co.nz](mailto:j.pierce@xtra.co.nz), if you would like to know more or be part of it.

## Upper Coromandel Landcare Association (UCLA)

By Reihana Robinson

### Local Candidate Queries

#### 1. Tupu kai

UCLA believes the Food Resilience: Tupu Kai to be an excellent initiative. Will this be expanded beyond the Colville region?

#### 2. DOC to support regional ratepayers

Everyone talks about keeping property taxes low. They are referred to euphemistically as “rates” control as if rates were anything other than a form of taxation. But necessary infrastructure requires funding. Cutting back on contracts and bringing work inhouse can be a step in the right direction. But there is a question concerning the largest landowner on the Coromandel that does not pay rates at all. It would probably require an Act of Parliament to get the Department of Conservation (DOC) to pay taxes so let’s think of a solution that benefits the communities they utilize.

PILOT (payment in lieu of taxes) could offer a beneficial way forward for our communities. PILOT could be a way that DOC can contribute to our region rather than being a tax liability. For example, DOC could offer to pay to maintain the upper Coromandel dirt roads from north of Colville up to the DOC Fantail Bay and Fletcher’s Bay DOC campgrounds and the Port Charles Road up to the Stony Bay DOC Campground and south to the Waikawau DOC campground.

Given their free use of our roads this payment would be a small sum to acknowledge ratepayer generosity over decades given to a government department that controls vast hectares of our region.

In Hahei DOC they could create stunning toilet facilities at the beach and sensible parking arrangements (similar to how Hot Water Beach parking operates).

All DOC co-governance memoranda of understanding or contracts or however they define their iwi partnerships should operate with the same transparency as all government business and be subject to the normal OIA procedures.

#### 3. Totara Valley

Another land issue is the Thames Totara Valley subdivision. All councillors need to show who is responsible for committing ratepayers to fund roading and other development when the storm water may well run into a wetland and has not been consented by regional council. If TCDC justifies this subdivision by claiming it is assisting with housing, to what extent will there be co-operative housing where shared use facilities create huge savings and promote real community “well-being” where communal dining and gardening.

#### 4. Waste management contract

All councillors should be familiar with the multi-million-dollar Waste Management contract and know how much it will additionally cost ratepayers now we learn the Tirohia landfill is at capacity and also be aware of the cadmium levels are in the water in the school well adjacent the Tirohia dump.

#### 5. Humane wild animal control

UCLA requests councillors should support humane wild animal control in forums where it matters and support open transparent meetings, workshops, etc. that allow the public full comprehension, should they desire, of who says what?

#### 6. Water Services

All citizens running for office should be fully aware of what the three-council water services delivery “iwi concerns” are that have recently been brought to TCDC attention regarding claims by Ngāti Maru outside of TCDC region?

#### 7. Fin fish farming in our moana

Creating infrastructure to support multi-million-dollar businesses seems not to fall into the category of basic council business. Do you know how much and how much more will be demanded from ratepayers to support marine farming?

**COROMANDEL**



**BUILDING CENTRE**

**PH: 866 8848**

**“We’ll see you right”**



## MEG

By Steph Parkyn

### Weeding and planting with Hillary Outdoors rangitahi

Students from Trident

High School in Whakatāne have been helping us with some community weeding and planting projects while on an adventure retreat with Hillary Outdoors at Tangiaro/Port Charles. One Saturday they tackled some wild ginger in a riparian area to stop the native trees being smothered by the invasive weed and the next weekend they helped us plant native trees around the new Pā Harakeke, a flax garden for weavers. The weather on our planting day was atrocious, pouring rain and boggy ground, but the rangitahi were not deterred and they helped to clear an area of kikuyu and plant some beautiful coastal native plants. We hope to have rangitahi from Trident High come back each year to continue to plant this TCDC reserve area into a much-loved area for the local community that boosts the native biodiversity.

We were funded by Destination Hauraki Coromandel for the plants, through their "Good For The Soul – Kaitiaki" scheme. You can help by donating to the MEG Tamariki for Trees project: <https://thecoromandel.nz/good-for-your-soul-kaitiaki/planting-sites/tamariki-for-trees-planting-project/>.

### Coromandel backyard trapping

The project continues to gain momentum! We are grateful to Driving Creek Conservation team who are helping our volunteers to manage installing and checking traps. Initially begun after residents had sightings of stoats and concerns for the rare pāteke and other native birds that visit town, the project will continue to spread in a coordinated way with Vicki Sephton at the helm as we seek more funding. Ngā mihi nui to Genevieve Morley who kickstarted the project for MEG with funding from Predator Free New Zealand.

### Forest ringlet butterfly

Our peninsula is home to some pretty rare species, and one you may not have heard of or seen is the forest ringlet butterfly or te pēpepe pōuri. It's so specialised that it only lays eggs on a couple of species of native grasses, and in the Coromandel that's likely to be Gahnia pauciflora or Gahnia setifolia, which are types of cutty grass! Next time you're encountering this sharp-edged grass, take a look for the tiny round eggs, or some luminous green caterpillars. When they munch on the grass they leave notches in the blades. The adults live for only three weeks, are orange and brown with spots, and you might find them feeding on manuka nectar. Sara Smerdon from Mahakirau Forest Estate gave a wonderful talk at our last winter lecture that included some of her research on this rare and declining species that can occur in Coromandel forests, typically at altitudes greater than 200m above sea level and needing protection from wasp and rat predation.

Now that our winter lecture series is over, we'll be starting to organise events for our summer holiday programme. We've got a vacancy for a part-time programme leader over January, please check out our classified advert for more information. Ngā mihi nui.

Follow us on Facebook or Instagram, contact us at [info@meg.org.nz](mailto:info@meg.org.nz) or make a donation by visiting our website [www.meg.org.nz](http://www.meg.org.nz).



## Driving Creek Conservation Park

By Sophie Whittall

### Conservation Week Planting at Driving Creek

Driving Creek has recently welcomed more than 60 new eco-sourced native plants into its entrance area and predator-proof sanctuary as part of Conservation Week.

Twenty-eight plants were kindly donated through the Destination Hauraki-Coromandel Kaitiaki initiative, grown at the Pare Hauraki Nursery in Thames. Among them were treasures such as puawānanga, tītoki, kōhūhū, kōwhai, and koromiko - species that will add both diversity and resilience to the ngahere.

The project was further boosted by contributions from Driving Creek visitors. Koha collected in the donation box allowed the team to purchase over 30 additional plants from Colville Harbour Care Nursery. With the help of Sassy, a great mix was selected including hardy harakeke and koromiko to provide food for our birds, as well as tarairi, tī kōuka, tānekaha, and akeake.

Both Pare Hauraki and Colville Harbour Care nurseries are committed to eco-sourcing, collecting seed and propagations from the local region. This practice ensures that plants are genetically suited to Coromandel's unique climate and ecosystems, improving survival rates while safeguarding local biodiversity.

The new plantings were placed in the Driving Creek entrance and within the predator-proof sanctuary. The more sensitive species are now safely planted in the sanctuary, away from introduced pests like possums and rabbits. The planting sites were chosen to help nature along by infilling areas where seedlings have not naturally established.

The mahi was made possible with the support of many hands. Jasmine, from the conservation team, planted puawānanga which will hopefully be flowering this time next year in the sanctuary. Resident artists Jenny and Chloe also volunteered their time to assist with weeding and planting. Thank you to Richard and Jeremy from Remnant Restoration for helping with the site preparation.



Sophie and Saskia picking up the plants from Colville Harbour Care Nursery.



Chloe, a resident artist at Driving Creek, helping with the planting.

**James & Turner**  
131 Kapanga Road  
07 866 8805



## COROMANDEL FISH - DIVE - HUNT



**BOAT PARKING AT THE  
REAR OF THE SHOP  
- TURN BY THE FOUR SQUARE**

**Rob & Jeni Ashman Owners / Operators**  
Rob - 027 592 7180 | Jeni - 021 636 119 | Shop - 07 866 8797  
[teamashman201@xtra.co.nz](mailto:teamashman201@xtra.co.nz) | 95 Kapanga Road Coromandel



Forest Ringlet Butterfly

# rangatahi OUR CHILDREN

## Coromandel Area School

By Tracey Adams

### Looking backwards to move forwards

Kia whakatōmuri te haere whakamua – I walk backwards into the future with my eyes fixed on my past. This whakatauki resonates with me the longer I'm (back) at Coromandel Area School. Like many of my generation I have great memories of my time at CAS as a student in the 1980s. The sense of community within the school at the time was strong, the school was punching above its weight in many areas, and many of the students from that time have gone on to do great things. So, I look back, what was happening that worked well, what can we bring forward into the now?

We also have staff and parents at the school who were here as children in the late 90s and early 2000s, they also have memories of strong connections with sport, te ao Māori and opportunities they had as young people growing up in Coromandel, so again I ask, what was it that was working well? What were those aspects of the school curriculum and the community that supported positive experiences for our young people?

Often it is about the people, the staff who were here, the whānau and families who got involved and made things happen for the tamariki and rangatahi. All too often when those people leave, things drop away. The challenge is to identify those positive aspects of being a CAS student, look into the what, who and how... and to adapt this to



our current context together with our current strengths as a school. The goal is to create sustainability, to bring things forward into the present, and beyond into the future to grow our identity as a school and community. To put programmes in place that are able to be sustained beyond specific people and ensure our foundations are strong and will hold firm through change.

This year we pulled back on a lot of camps and extra curricular activities. This gave the opportunity to take stock, think about what is important to our community and also what opportunities our community provides that we need to ensure are being fully engaged with for the advantage of our young people. It has also given the opportunity to think about resourcing. Why do we do what we do? And what is the impact? Is it what we need or expect? Is it good enough?

From 2026 onward we will begin to reinstate some regular camps and experiences for specific purposes. The intent will be to build our students' confidence and connection with who they are, where they come from and equip them to move forward into the wider world as and when they wish to. A role has been created to focus on building the aspects of curriculum throughout the school that focus on EOTC – Education Outside the Classroom. Ensuring our programmes align with what is considered best practice in terms of both safety and experience. This will encompass "Nature Class" and the regular interaction of our students with the local environment. It will also map out camps that happen at different year levels and ensure the planning is complete and able to be used year after year so that our community can

rely on the opportunities students will have at different times across their schooling. These will be designed to meet the needs of our young people as they grow from childhood into young adulthood.

Community, whānau and the environment is what shapes a young person and develops their sense of identity and belonging. Providing opportunities for freedom and challenge within a safe environment fosters confidence and resilience. Our children have this in abundance growing up in Coromandel. As a school, we need to ensure we are manifesting the very best of what we have locally to nurture our next generation of parents, leaders, business owners, workers, professionals, volunteers and ultimately, contributors to our community. Thank you to all who are contributing in various ways to our young people's future, it takes a village!

## Coromandel Youth Group

At Hauraki House.

Coromandel Youth Group is for children aged 5–15yrs.

We provide a supervised, fun environment where kids can hang out with friends and participate in a wide variety of activities. To participate, parents just fill out a membership form.

School Holidays: Monday to Thursday, 11am to 4pm.

Closed public holidays.

After School: 5yrs+, Tuesday, Thursday & Friday – 3pm–5pm.

**For 10yrs+ school term time:**

Monthly Friday Night, outdoor games, **10 October**, 5.30–7.30pm.

Miniatures Game Club, Wednesdays 3pm – 5pm, interactive games.

For more information, during open hours, call in, phone 027 217 9206 or contact us at [coromandelyouthgroup@gmail.co.nz](mailto:coromandelyouthgroup@gmail.co.nz).

Alongside kind donations received, we are grateful for grants from: Lottery Waikato, Trust Waikato, COGS, D.V. Bryant Trust, Aotearoa Gaming Trust, NZ Community Trust, Star & Garter Hotel's Give a Little Pizza Sundays

## JOHNSTON FENCING

PHONE ROSS  
021 395 900



**MICHAEL WOOD  
BUILDERS LTD**  
COROMANDEL

[mikewood@outlook.co.nz](mailto:mikewood@outlook.co.nz)

**021 143 1652**

• NEW HOMES • ADDITIONS/REPAIRS • RENOVATIONS • DECKS/FENCES

New Zealand  
Certified  
Builder  
Association



## Llandem Consulting Engineers

**Derek Stewart**  
CP Eng MIPENZ

- Structural
- Civil
- Geotechnical

[llandemengineering@gmail.com](mailto:llandemengineering@gmail.com)  
(07) 866 6704  
027 442 4234





# hākinakina SPORT

## Peninsula Pirates

By James Castle

The Peninsula Pirates Flag Football team kicked off their season at the SASA Flag Football Tournament in Manurewa, Auckland.

Playing six games in two days certainly tested the fitness but the Pirates spirit stayed intact.

We didn't come away with the silverware but there are plenty of positives heading into the rest of the season!

If you'd like to join, email [Peninsulapirates777@gmail.com](mailto:Peninsulapirates777@gmail.com) or come to training Tuesday and Thursday 4pm-6pm Pound Street, Coromandel Town



## Coromandel Croquet Club

By Raewyn McKinney

Last week we held our Croquet Club AGM.

The committee is much the same as for the last year: President – Daryl Smith, Vice President – Sophie Armstrong, Secretary – Raewyn McKinney, Treasurer – Sandy Christensen, Club Captain – Lyn Robertson.

We have had some lovely gatherings recently and been extremely lucky with the weather.

Even if the day is looking slightly grey and the forecast is not good, if you want to join us, do come along. We normally manage to play all morning; on many days the rain has not come until the afternoon. We have a few members who have joined only recently, and I notice they are already becoming well skilled, making for some close and exciting games.

If you would like to try croquet, our summer hours are 9.15am on Tuesdays for "association croquet" and the same time on Fridays for "golf croquet".

We provide all the equipment and a period of coaching before you need to commit to joining the club. Casual players are welcome to come along for a payment of \$5 per day. If you would like to join us, contact Lyn on 027 466 2661 for more information.

The club is situated in Woollams Ave next to the Bowling Club.



## RETIREMENT COTTAGES FOR SALE

A retirement village nestled in the heart of the Coromandel Town that offers independent living and amazing facilities like communal games room, ballroom, library, lounge, kitchen and dining area, two large decks with BBQ's, boat and campervan parking

### Cottage Features

- ✓ Fridge
- ✓ Oven
- ✓ Cook-top
- ✓ Microwave
- ✓ Washing machine/Dryer
- ✓ Heat pump
- ✓ St John alarm
- ✓ Car port

Contact Wayne Besley  
027 247 2016

[www.corollifivillage.co.nz](http://www.corollifivillage.co.nz)  
VISIT OUR WEBSITE

## COROMANDEL LIFESTYLE VILLAGE



2 Bedroom units  
**\$450,000**

CALL 027 247 2016 NOW  
to arrange your personal tour  
through the village

# Classifieds

Classifieds cost 30 cents per word – please email your words to [corochronicle@gmail.com](mailto:corochronicle@gmail.com) or call/text Debbie on 021 235 6648.

## PROFESSIONALS

**A COROMANDEL PLASTERER.** For new homes and all renovation requirements I offer 25+ years' experience for a professional plastering finish. Doug Marsters 022 019 9255.

**ALUMINIUM JOINERY MAINTENANCE** Locks, handles, hinges, wheels. Call or text Mike, Coromandel Glass 027 661 0190.

**BLINDS, CURTAINS, SCREENS, AWNINGS & SHUTTERS.** Please phone or email Whitianga Flooring Xtra for your free in-home consultation (07)8662836 or sales. [whitianga@flooringxtra.co.nz](mailto:whitianga@flooringxtra.co.nz)

**BRICK AND BLOCK LAYER.** Laurie Gordge (07) 866 8200, 027 494 9573, [buddy10@xtra.co.nz](mailto:buddy10@xtra.co.nz).

**BRICK AND BLOCK LAYING SPECIALISTS.** L.B.P. Phone Joel 021 0234 0210.

**CARPENTER WANTING WORK.** Alterations, new houses, additions, no job too small, licensed building practitioner. Ph 021 675 575.

**COROMANDEL GARAGE DOORS.** Ph: Gerry Packo 022 453 2188. New installs, new motors, new remotes, door servicing, new parts, we do it all. E: [corogaragedoors@gmail.com](mailto:corogaragedoors@gmail.com); W: [www.corogaragedoors.co.nz](http://www.corogaragedoors.co.nz).

**COROMANDEL HONEY LTD.** Local beekeepers. Honey for sale and manuka sites wanted. Call Evan on 021 533 826.

**COROMANDEL STUMP GRINDING.** Local operator based in CoroTown. Contact now 027 451 2224 or email [dynamictreecare@gmail.com](mailto:dynamictreecare@gmail.com).

**FLOOR SANDING & SOLID TIMBER FLOORING INSTALLATION.** Please phone or email Whitianga Flooring Xtra for your free measure & quote (07)8662836 or sales. [whitianga@flooringxtra.co.nz](mailto:whitianga@flooringxtra.co.nz)

**GENERAL HOUSE & PROPERTY MAINTENANCE & HANDYMAN SERVICES.** Phone Mike 027 240 9084. Coromandel and surrounding areas.

**GIB STOPPER – RICHARD FIELD.** Local and coastal. Ph 029 778 8645.

**GIB STOPPER/PAINTER.** Alpha Drywall, Geoff, local 022 027 0290.

**GLASS REPAIR** Call or text Mike Coromandel Glass 027 661 0190.

**HEAT PUMPS.** Sales and installation of Mitsubishi and Fujitsu heat pump/air conditioning. Based in Kuaotunu. Call Bill for a free no obligation quote 027 271 4803. [www.dynamiclectrical-whitianga.co.nz](http://www.dynamiclectrical-whitianga.co.nz). Warm or cool a medium sized bedroom with a Mitsubishi heat pump. Starting at \$2000 installed.

**HOUSEKEEPING SERVICES:** cooking, cleaning, ironing 027 738 1450.

**NEED A PAINTER?** Quality work for a fair price, no bullshit quotes and I can do your garden too. Ring Thomas on 028 400 4120.

**NEED SUPPORT AT HOME?** My name is Maria and I am an ex registered nurse and I live in Coromandel, Monday-Friday. I'm a kind, helpful and mentally strong person who can do personal care and support work for people in their home. Daytime and/or nighttime. Maria Utting: [mariautting@gmail.com](mailto:mariautting@gmail.com) 021 677 239.

**POOL QUEEN LTD.** Mobile Pool and Spa services Coromandel Peninsula. Call the Pool Queen to have your pool clean. Sharleena Tucker 027 316 3384.

**RIDE-ON MOWERS.** Repairs and servicing at Papa Aroha. Pickup and delivery can be arranged. Ph Mike 027 223 7919.

**ROOF KING LTD.** New roofs, re-roofs, leaks, spouting, downpipes, and general maintenance. Ph Eli 021 160 6790.

**SOLAR SYSTEM DESIGN AND INSTALL.** Good Energy your local solar specialists based in Whitianga. Ph Simon 021 242 3394.

**TILE INSTALLATION.** Please phone or email Whitianga Flooring Xtra for your free measure & quote for all your tile supply & installation needs (07)8662836 or sales. [whitianga@flooringxtra.co.nz](mailto:whitianga@flooringxtra.co.nz)

**VINYL LAYING.** Best price 027 350 9242.

**WEBSITEGUY – STEPHEN HUTTON** – for new websites, updates, hosting and domain names. Call: 027 585 3311. Email: [steve@websiteguy.co.nz](mailto:steve@websiteguy.co.nz); Web: [websiteguy.co.nz](http://websiteguy.co.nz)

## FOR RENT

AirBnB holiday accommodation available at Abby's Healing Haven, sleeps five in a separate three-bedroom house, walking distance to Coromandel Town, private, charming cottage with everything provided and a new spa bath on the back deck. Details, photos and AirBnB booking link on [www.abbyshealinghaven.com](http://www.abbyshealinghaven.com)

Boat Hirage 5m Ramco Getaway. Suitable 2 persons. Day skippers certificate required. Enquire for further details. Mark 021 295 5532.

## FOR SALE

**COROMANDEL FLOWERS.** For all of your fresh flower needs contact Elisabeth 021 211 9556.

**FIREWOOD DRY!** Delivered Coromandel Town and surrounding areas, good rates, phone/text 022 635 2841.

**FIREWOOD FOR SALE,** stored outside wood is Poplar, \$85 per metre cubed, buyer to collect. Contact Sharon 0278211989.

**GRISELINIA HEDGE** plants for sale, various sizes. Phone Ed 027 623 6205.

**HAY FOR SALE** \$13 per bale, buyer to collect. Contact Sharon 0278211989.

**MOBILITY SCOOTER** Model MT-03 only 4km, yes, only 4km. In brand new condition. Upmarket model, blue in colour. \$3900.00 ono Ph: 027 363 9960.

## HEALTH & WELLNESS

**ABBY'S HEALING HAVEN** 021 352 486. Chakra and energy clearing, crystal calibration 90 minutes - \$140, appointments via video link or in person. Organic Ayurvedic facial massage, 30 min - \$55. Breakthrough Tapping session, 60 min - \$100, an effective self mastery method for dealing with all stress and anxiety also self sabotaging behaviors. Online or in person. Intuitive Tarot and oracle reading, 45 minutes - \$60. See more at [www.abbyshealinghaven.com](http://www.abbyshealinghaven.com).

**CONTACT C.A.R.E COROMANDEL.** Local clinic held every Friday at Coromandel Independent Living Trust between 9am-3pm. ConTact C.A.R.E can help with headaches/migraines/concussion, back and neck pain, sports injuries, old unresolved injuries, chronic and acute pain, range of movement. To find out more or to book an appointment please contact Elly Smith on 027 311 7505.

## SITUATIONS VACANT

**MOEHAU ENVIRONMENT GROUP** have a vacancy for an enthusiastic Summer Holiday Programme Leader, max 20 hours per week, 29 Dec – 25 Jan to hold nature conservation events for children and adults. Contact us [info@meg.org.nz](mailto:info@meg.org.nz) for PD. Applications close Wed 22nd Oct..

## WANTED

**VEHICLES WANTED** Dead or Alive. Cars, vans, utes, Trucks. Call 0800 333 398 or text 021 344 449.

**WANTED TO BUY** – Washing machine. Preferably Fisher & Paykel, in good condition. Phone 027 286 2674.

## WORK WANTED

**ARBORIST** - Professional, Equipped & Insured for quality tree work. Dynamic Tree Care 027 451 2224.

**TREE SERVICE.** Dismantling or pruning. Free quotes. Call Jeremy Haszard 027 421 0603.

## OTHER

**AGE CONCERN** Falls Prevention Strength and Balance exercise class for seniors. Coromandel Gym, Pottery Lane Tuesday and Thursday, 10am, \$2. Vickie (07) 866 7894.

**PINK DRINKS** two hour bi-monthly lesbian and gay social gatherings. For further information phone Jules 027 392 3221.

## VOLUNTEERING

Volunteering ads are free to place in the Chronicle classifieds (subject to space)!



# Coromandel Town weekly and monthly meetings

## Every Monday

Step Aerobics at Coro Gym.....	8am
Coro Walking Group, meet outside The Bizarre, Ruth 027 338 3545 .....	8.30am
Coromandel Hikers' Group, Hauraki House, Murray Brown (07) 866 8602.....	9am
Monday Walkers, Woollams Ave car park north end, Tracy and Peter Kendall 027 333 4722 .....	9am
Gold Fit at Coro Gym.....	9.30am
Rummikub at The Club.....	1-4pm
Line dancing, Anglican Church Hall, Jeni Mudgway 021 022 75341 .....	3-4.30pm
Coro Superstars, a performing arts group for 6-13-yr-olds, Anglican Hall, contact Claire 021 653 650 .....	5pm
Bridge, St John rooms.....	7pm
Taizé 4-part harmony singing, Sally 027 302 4245.....	7.30pm

## Every Tuesday

Croquet Club – Association Croquet, Woollams Ave, Lyn 027 466 2661 (winter hours) .....	9.45-12.15am
Age Concern seniors' exercise class, Coromandel Gym. \$3 Vickie 027 417 7077 .....	10am
Yoga for everyone, Colville Hall, Kate 021 125 3152 .....	10am
Playcentre, Woollams Ave.....	10.30am-1pm
Na Ihowa Ahau after-school kids club (term time only), Anglican Hall, Anita 027 259 1085 .....	3.15-4.45pm
Tai Chi, Waikato Events Centre (above the swimming pool), Christina 021 113 4768 .....	4.30-5.45pm

## Every Wednesday

Step Aerobics at Coro Gym.....	8am
Pastel Artists Coromandel, Rose's Studio, contact Allan (07) 866 8053.....	9am-12pm
Gold Fit at Coro Gym.....	9.30am
Ballet Class For Adults, Coromandel Citizens' Hall, \$15 per class. Marilyn 027 336 5263.....	10-11am
Coromandel Home-school group, Julene 020 4060 8102 .....	12.30pm
Kung Fu, Coromandel Hospital .....	5-7pm

## Every Thursday

Coro Art Group, Coro Flying Club, Lindsay (07) 866 7799.....	9am-12pm
Age Concern seniors' exercise class, Coromandel Gym. \$3 Vickie 027 417 7077 .....	10am
Free Guided Meditation, Havalona Pyramid .....	10-11am
Movement for Equanimity (MFE), a well-being fascia movement class, contact Judy 021 0200 7550 .....	3-4pm
Line dancing, Anglican Church Hall, Jeni Mudgway 021 022 75341 .....	3-4.30pm
Coromandel Tennis Club "club day" .....	4.30pm
Yin Yoga with Toni, Event Centre, \$10-\$20, limited spaces please txt to book a space, Toni 020 4076 1526 .....	5.30pm
Coromandel Pickleball, term time, Coromandel Area School gym. ....	6-8pm
Coromandel Narcotics Anonymous 12 step addiction recovery meeting, at 100 Pound St (orange house). Contact Rosie 027 577 7716 .....	6.30-7.30pm
Free drop-in Dharma talk or video at Mahamudra .....	7-8.30pm

## Every Friday

Step Aerobics at Coro Gym.....	8am
Community Gardens volunteer day .....	9am-12pm
Yoga for everyone, Anglican Hall, Kate 021 125 3152.....	9am
Croquet Club – Golf Croquet, Woollams Ave, Lyn 027 466 2661 (winter hours) .....	9.45-12.15am
Chess Club, Weta Cafe, Mike 027 304 9252 .....	9.30am
Playcentre, Woollams Ave.....	9.45am-12.15pm
Coromandel Bowling Club social evening at the Club .....	3.30-7pm
Coromandel Flying Club social gathering, all welcome .....	5.30pm

## Every Saturday

Coromandel Homegrown Market, Wharf Rd (summer only).....	9am-1pm
RSA Coromandel, RSA Club Rooms Woollams Ave. President Gary Pettett 021 061 0852 .....	3.30-7pm

## Every Sunday

Anglican Church Service .....	10am
Coromandel Tennis Club "club day" .....	2pm

## Monthly

<b>1st Mon</b> – Coro Patchwork & Quilters, St John rooms, Michaela Green 021 0287 1879 .....	9.30am-3.30pm
<b>3rd Mon</b> – Coro Patchwork & Quilters, St John rooms, Michaela Green 021 0287 1879 .....	9.30am-3.30pm
<b>2nd Tues</b> – Cancer Support Group, St John rooms John Walker 027 482 0435 .....	10am

<b>1st Wed</b> – Coro Embroiderers' Guild, St John rooms, Helen Pearce (07) 866 8460. ....	10am-3pm
<b>1st Wed</b> – Lions dinner meeting (winter time), St John rooms. Sue Hughes 021 142 1124 .....	6pm
<b>2nd Wed</b> – Garden Circle. Jeni Mudgway 021 0277 5341 .....	1pm
<b>2nd Wed</b> – Car Club meeting at The Club, Bruce 027 249 0878.....	4pm
<b>3rd Wed</b> – Lions business meeting (winter time), St John rooms. Sue Hughes 021 142 1124 .....	6pm
<b>Last Wed</b> – Coromandel-Colville Business Association networking meeting, Combined Clubs, Woollams Avenue, everyone welcome (Feb-Nov).....	5pm
<b>Last Thurs</b> – Green Drinks at Star & Garter .....	5pm
<b>3rd Fri</b> – Dances of Universal Peace, The Pyramid, Sue 022 159 1571 .....	10.30am
<b>Last Friday</b> – Quiz night at the Club, from Friday 26 September until next April .....	7-9pm
<b>1st &amp; 3rd Sun</b> – Church Service at St Andrew's Church, Rings Road .....	10am

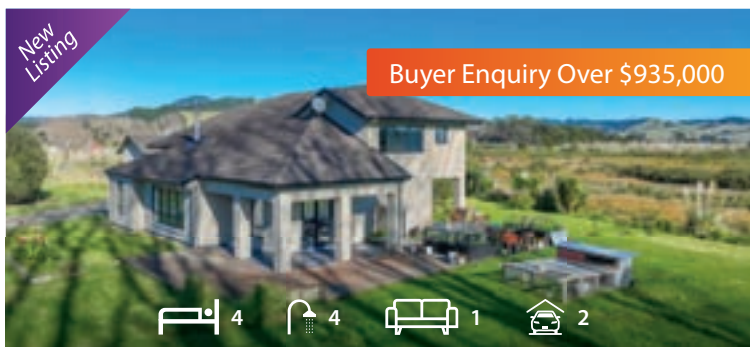
If your meeting has been omitted, please email Debbie at  
corochronicle@gmail.com with the subject "meeting" or  
txt/ph 021 235 6648. Please include contact name and phone number.

## Advertisers' directory

Company	Page
ACO Waikato	5
Ann Kerr-Bell – Natural Medical Centre	26
Automata Magazine	24
Cape Civil	12
Coro Gym	26
Coromandel Concrete and Landscape Services	18
Coromandel Lifestyle Village	35
Coromandel Marine Farmers' Association	31
Coromandel Open Studios Arts Tour	40
Coromandel Plumbing (1986) Ltd	18
Coromandel Taxi	14
Driving Creek Railway & Potteries	28,29
Dynamic Tree Care	20
Fairview Thames	22
Fish, Dive, Hunt	33
Four Square Coromandel	23
Frogs Lily Pad Construction	27
Gaia Decorators	25
GD Haulage	30
Good Energy	6
Guthrie Bowron	11
Harcourts	21
Harmony Roof Painters	18
Hauraki Taxation Service Ltd	20
HD Diggers	14
Himalaya Shop	4
ITM	32
James and Turner	33
James Drainage '97 Ltd	10
Johnston Fencing	34
Llandem Consulting Engineers Ltd	34
Mana	27
Matarangi Plumbing	24
Matt Hobbs Plumbing & Drainlaying Ltd	25
Michael Wood Builders Ltd	34
Nanny Near U	8
Parr Builders	6
Peninsula Electrical Services Ltd	15
Peninsula Pest Services	8
Purnell Lawyers	16
Rainman	3
Revell Architectural Design	10
Richardsons Real Estate	9
Ruamahunga Bay Joinery	7
Scott Simpson MP	16
Star & Garter	13,31
TCDC	17
The Club – quiz nights	15
Trinity Network	39
Twentymans	12
Waikato Regional Council	19
Waitaia Nursery	8
Wash 'n Waterblast	23
Whitianga Flooring Xtra	19







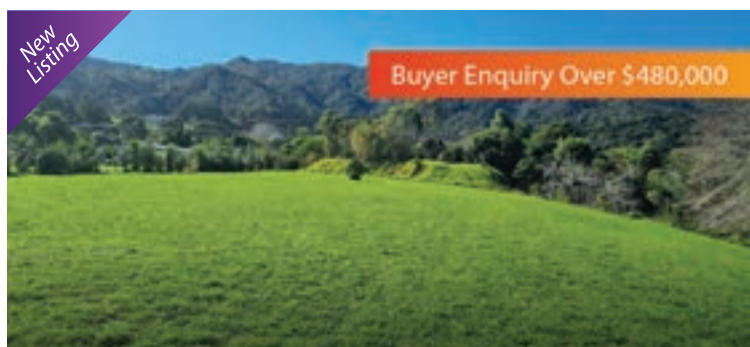
**Coromandel, 2710 Tiki Road**  
<https://www.trinityrealestate.co.nz/property/2710-tiki-road-coromandel>



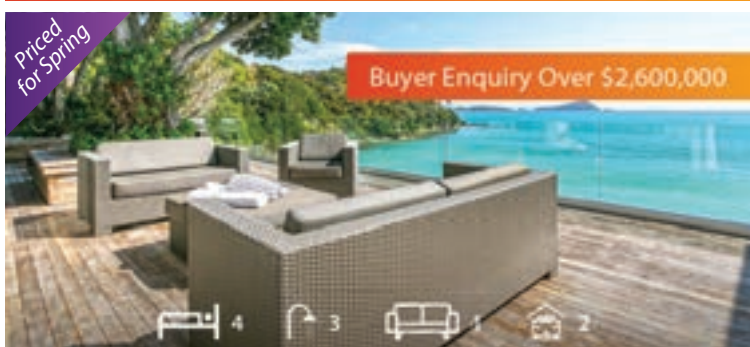
**Coromandel, 45 James Street**  
<https://www.trinityrealestate.co.nz/property/45-james-street-coromandel>



**Coromandel, 35 Victoria Street**  
<https://www.trinityrealestate.co.nz/property/35-victoria-street-coromandel-1>



**Coromandel, 2565 Rings Road**  
<https://www.trinityrealestate.co.nz/property/2565-rings-road-coromandel>



**Coromandel, 2999 Long Bay Road**  
<https://www.trinityrealestate.co.nz/property/2999-long-bay-road-coromandel>



**Coromandel, 35 Mary-Ellen Place**  
<https://thenetwork.co.nz/property/35-maryellen-place-coromandel>



**Coromandel, 285 Bellville Drive**  
<https://thenetwork.co.nz/property/285-bellville-drive-coromandel>



More listings on our website or call into our office at 65 Wharf Road (opposite 4 Square)  
**Contact us on 07 866 7313**

***"WE VALUE PEOPLE, NOT JUST TRANSACTIONS"***

Contact us for a free confidential appraisal and we can discuss our very competitive commission rates.

**We are open 7 days a week, call in anytime.**



**Rob Keatley**  
 REAL ESTATE CONSULTANT  
 0275 777 424  
 E: rob.keatley@trinitynetwork.co.nz



**Becks Greenhill**  
 REAL ESTATE CONSULTANT  
 021 069 4428  
 E: rebecca.greenhill@trinitynetwork.co.nz



**COROMANDEL**  
**OPEN**  
**STUDIOS**  
**ARTS TOUR**

**4/5 & 11/12 OCTOBER**

**HAURAKI HOUSE**  
**EXHIBITION**

**10AM-4PM DAILY**

**OPENING NIGHT**  
**FRIDAY 3 OCTOBER, 5.30PM**

Thames-Coromandel District  
**creative**  
COMMUNITIES *nz*

the coromandel  
**artbeat**  
spring  
festival

**COROMIND**

[www.coromandelartstour.co.nz](http://www.coromandelartstour.co.nz)